
HH Interior Design

Stakeholder Profile

- The Edgeworth Tobacco Building Richmond, VA
- Owner/Client: Real Estate Entrepreneur
- Forest City Commercial Group
- User: Businesses/Office Coworking Space
- Renovated Interior, Implementing Functional Office Space with existing Historical Value

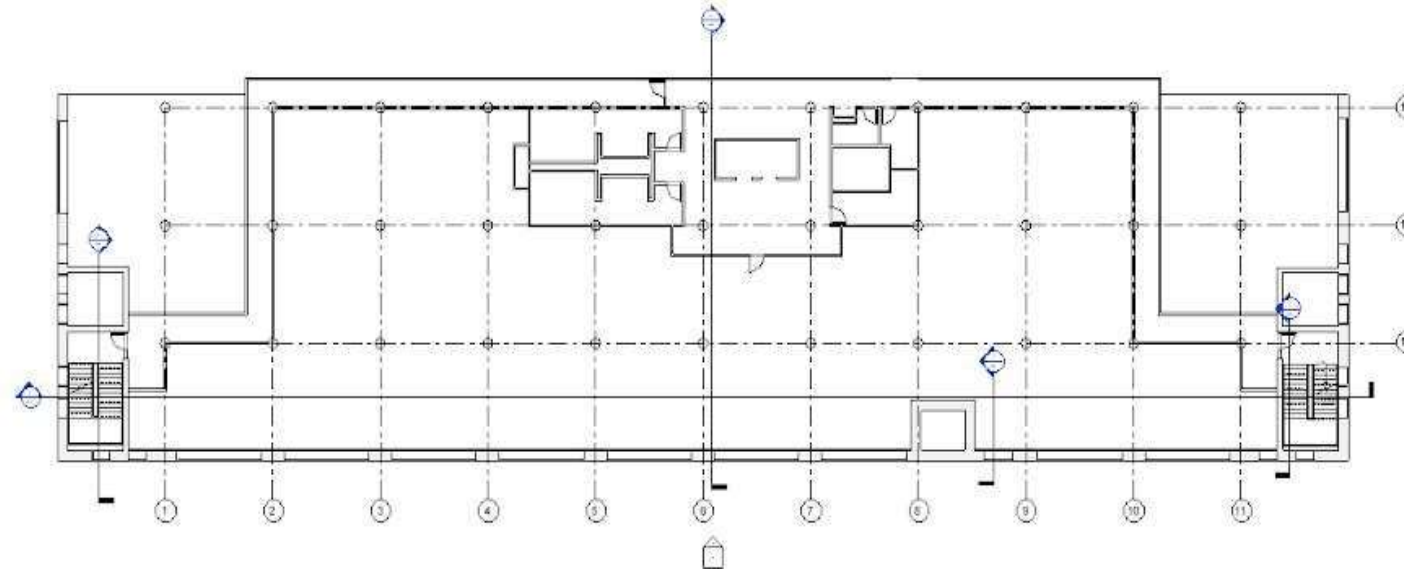


Site Profile

- The Edgeworth Building
- 2100 E. Cary Street
 - Richmond, VA, United States
 - 1920 Tobacco
 - Factory/Warehouse located on "Tobacco Row"



Third-Story Layout



- 166,000 Sq. Footage
- 166,000 Sq. Footage
- Tenant Sq. Footage= 10087 Sq. Ft.
- Tenant Sq. Footage= 10087 Sq. Ft.

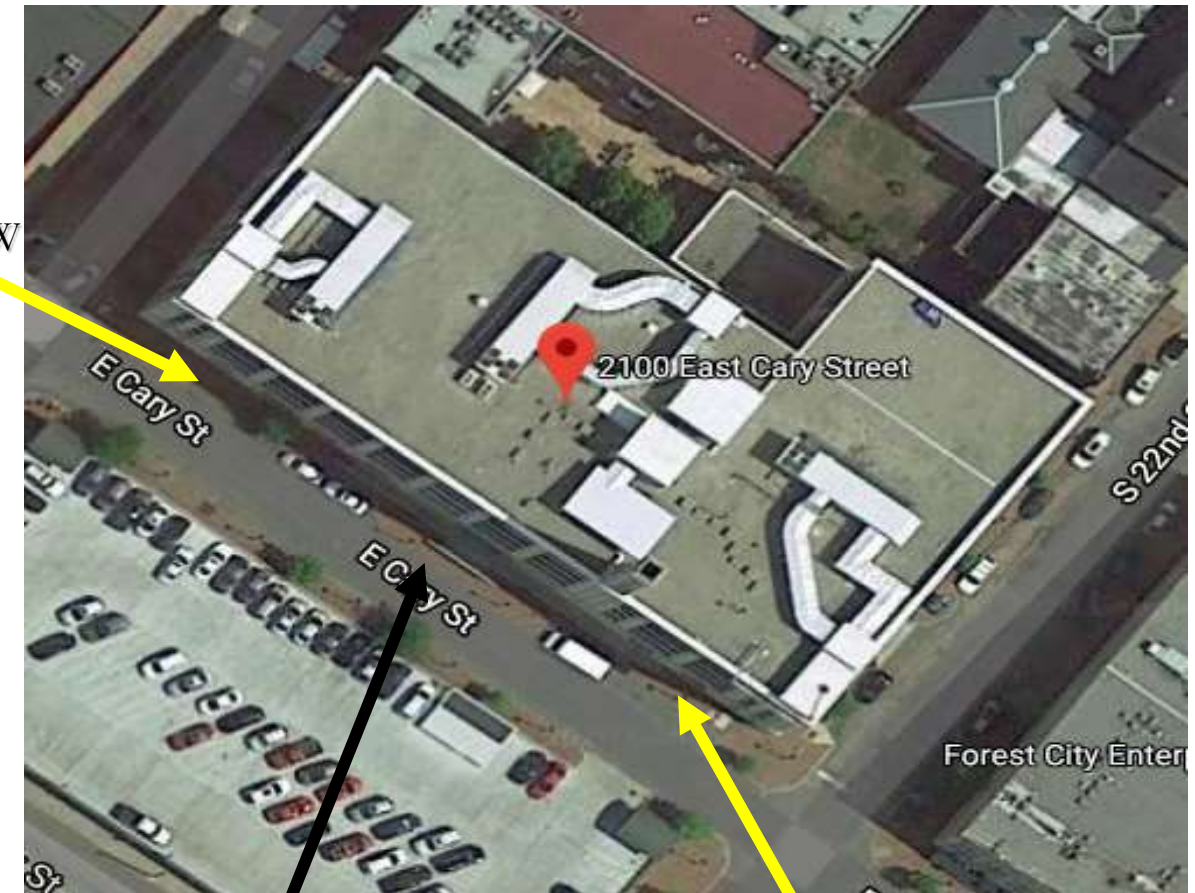


Site Analysis

Neighborhood



Sunlight SW



Entrance

Sunlight SE



Space Programming

- 4 Conference Rooms
- Large, Open Work Area
- Gourmet Lounge Area
- Storage
- Lounge Seating
- Reception Area
- Workstations

Concept

WORK & PLAY

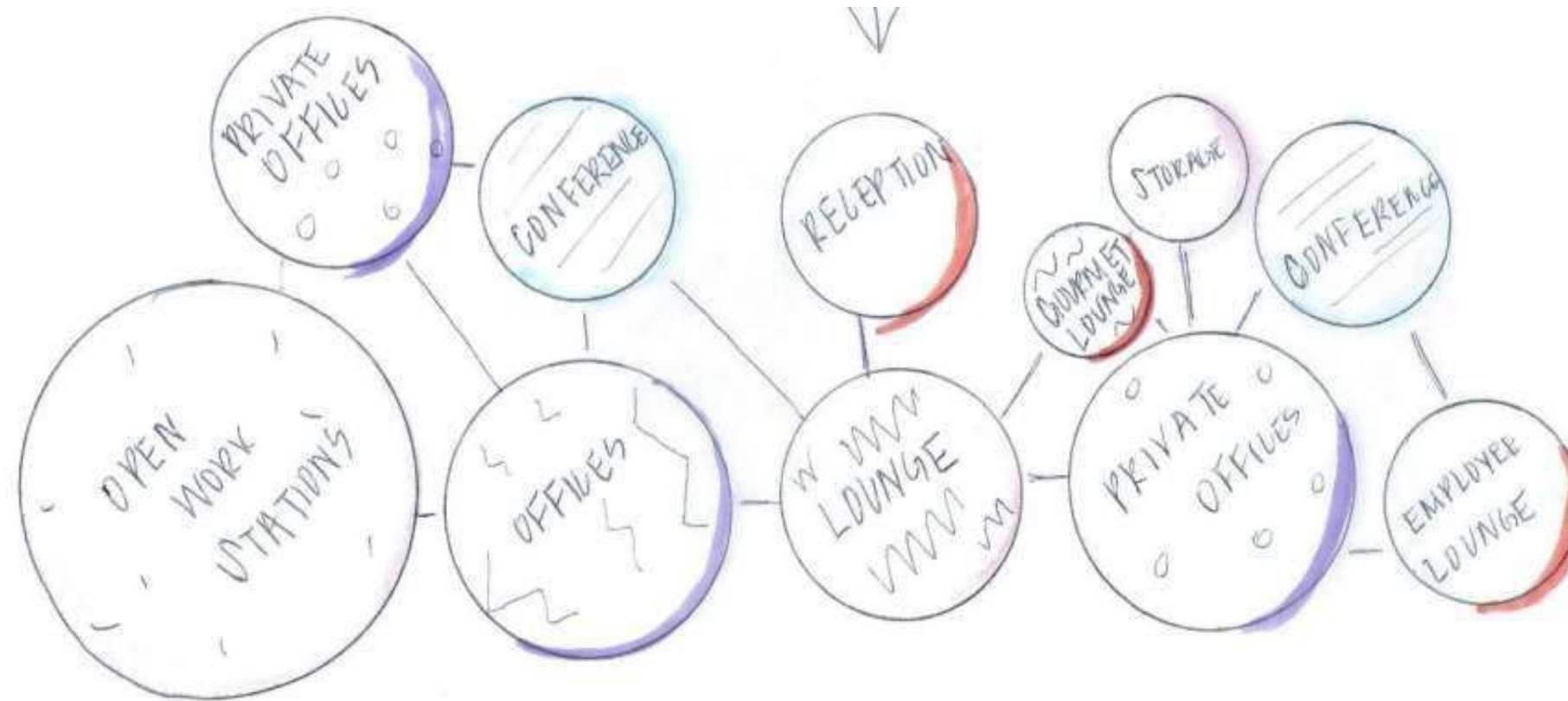
- Youthful, Artistic approach
- Art District/Displays are popular in the neighboring areas
- Graffiti is popular on display
- Coworking, functional space
- Public work areas
- Space that offers both flexibility & fun in the workplace



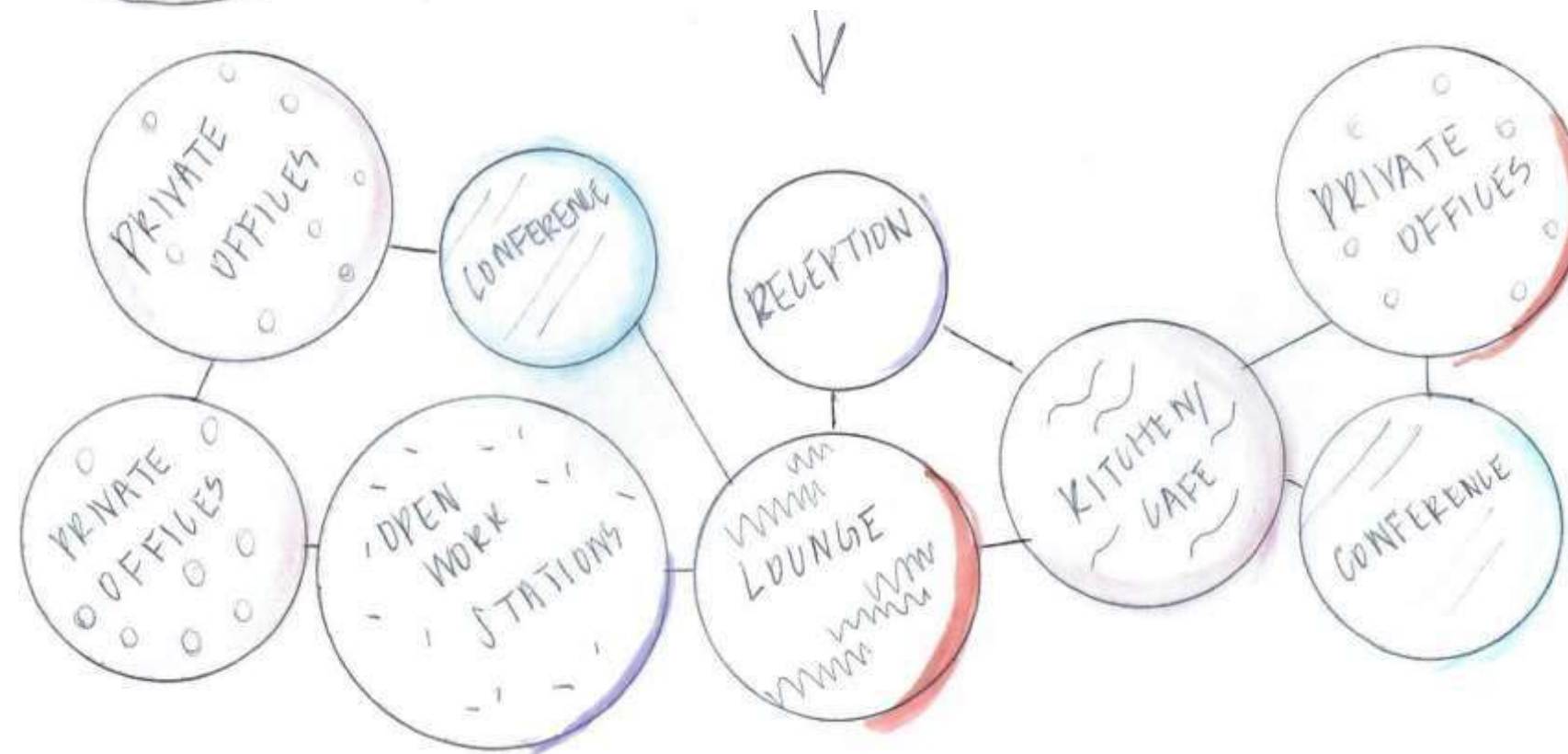
Inspiration



Bubble Diagrams

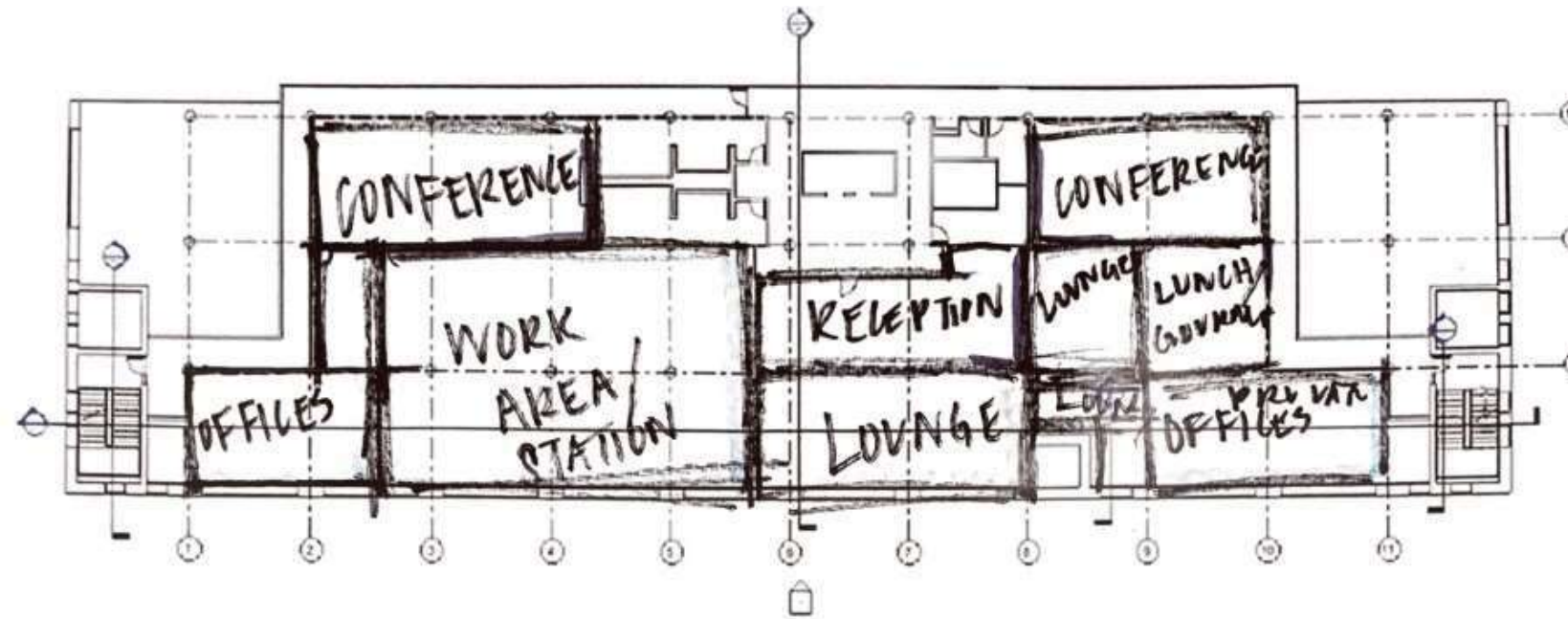


Option 1

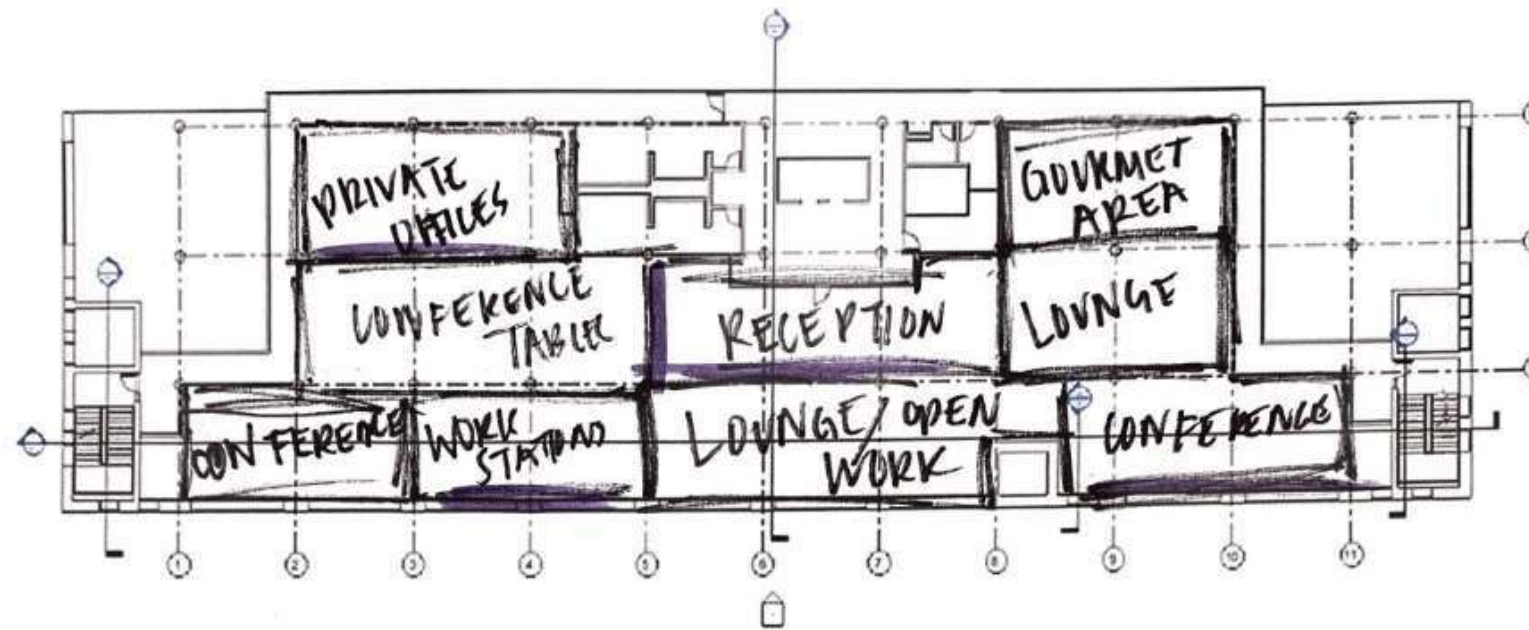


Option 2

Block Diagrams



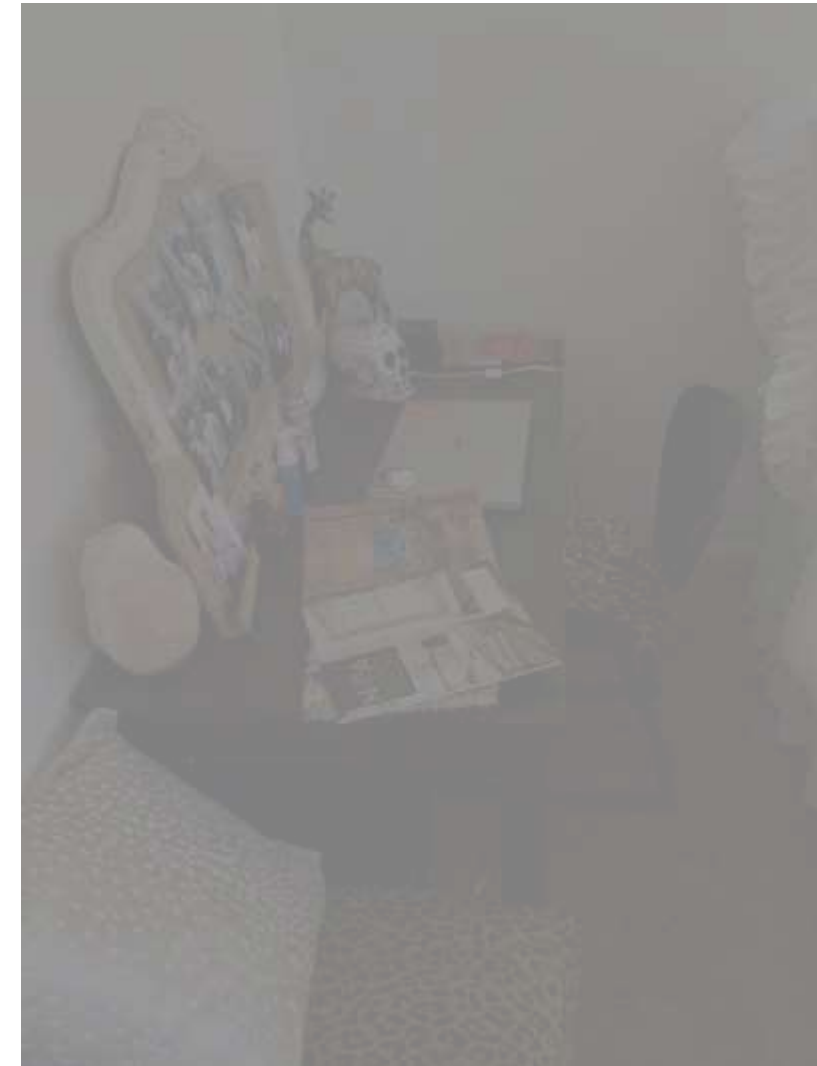
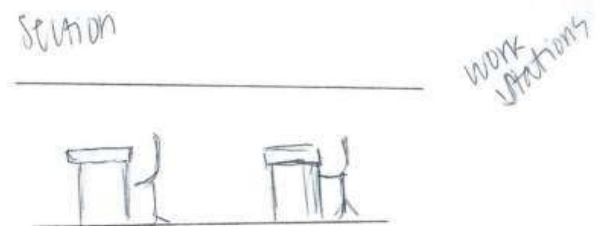
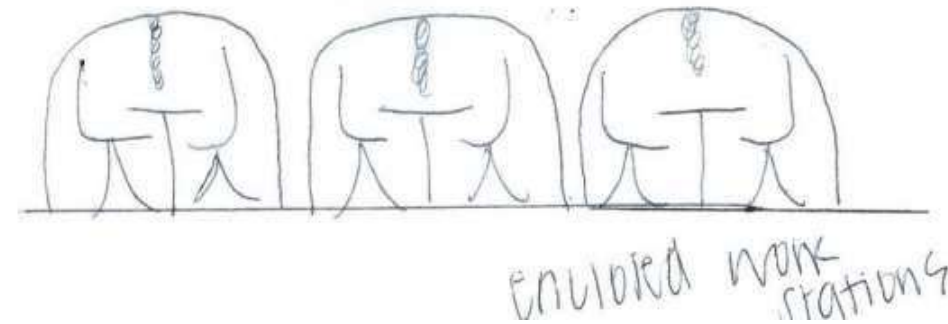
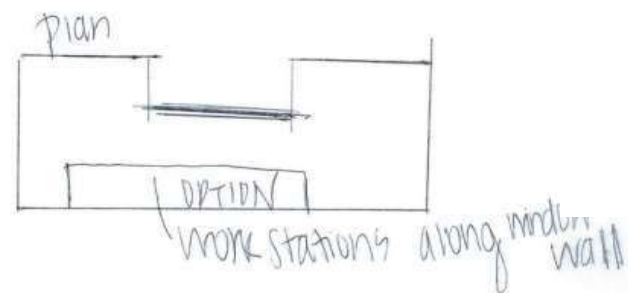
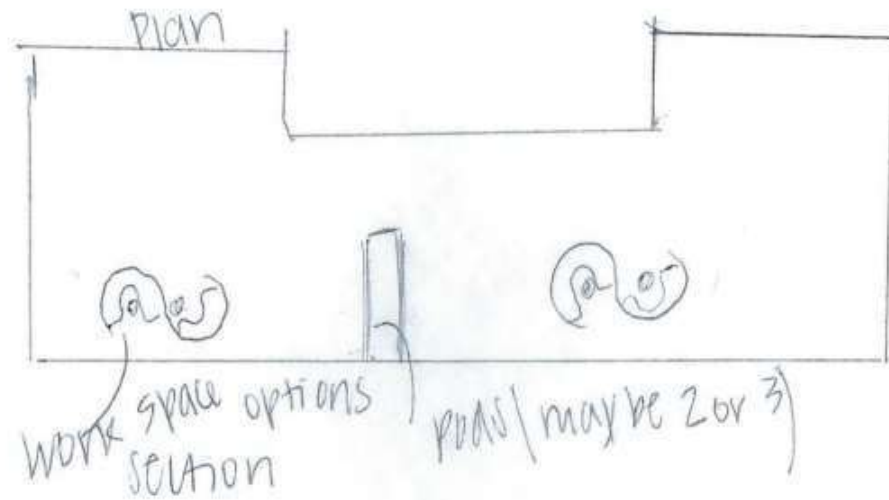
Option 1



Option 2

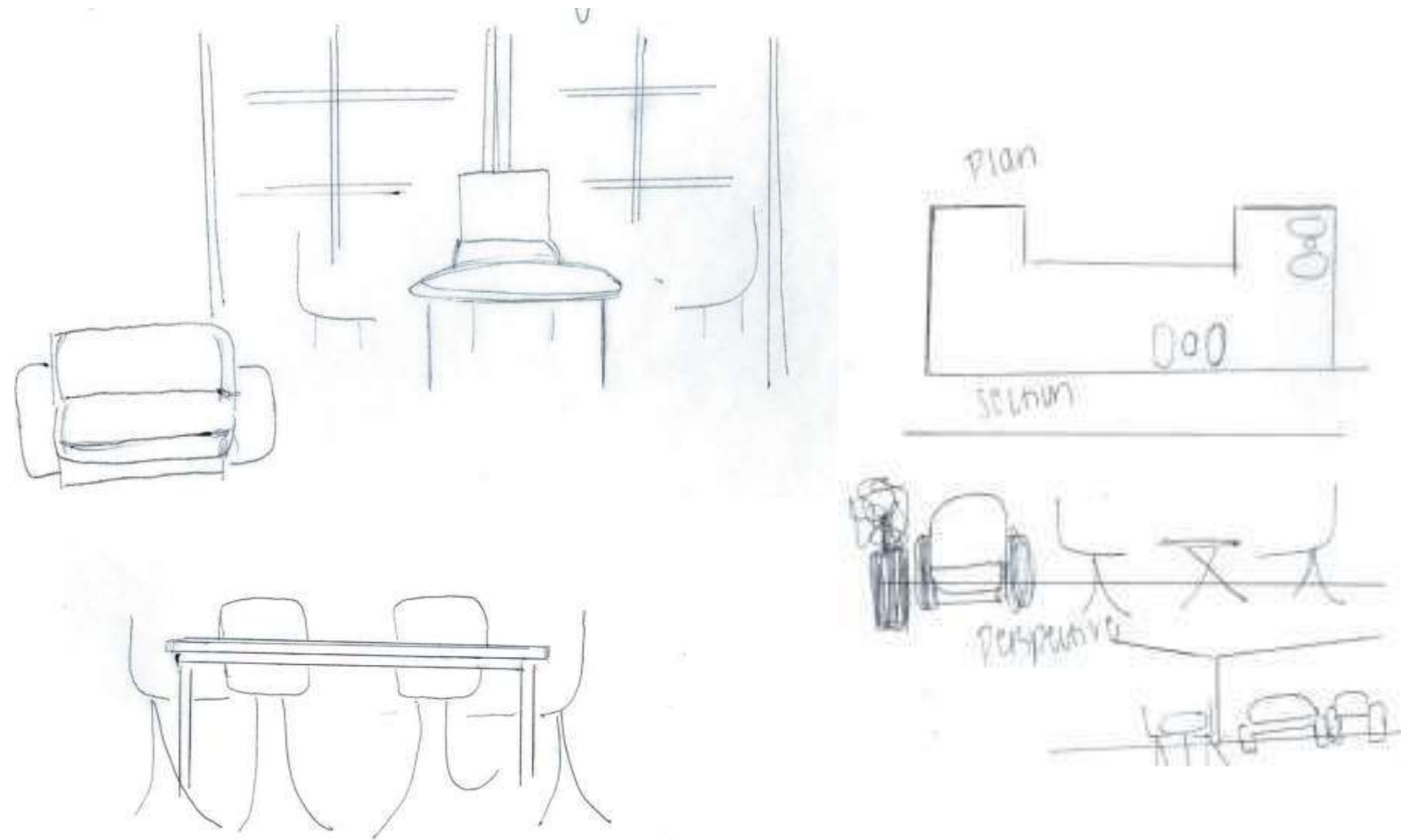
Activity Space Studies

Intense Focus Work



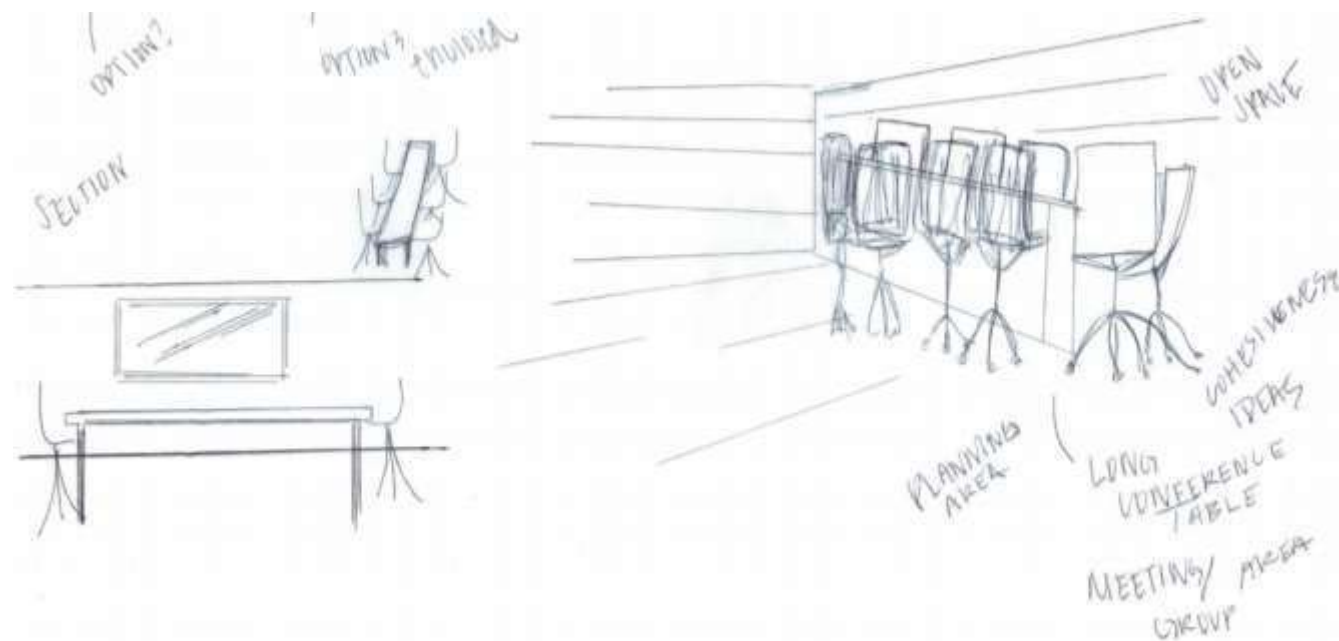
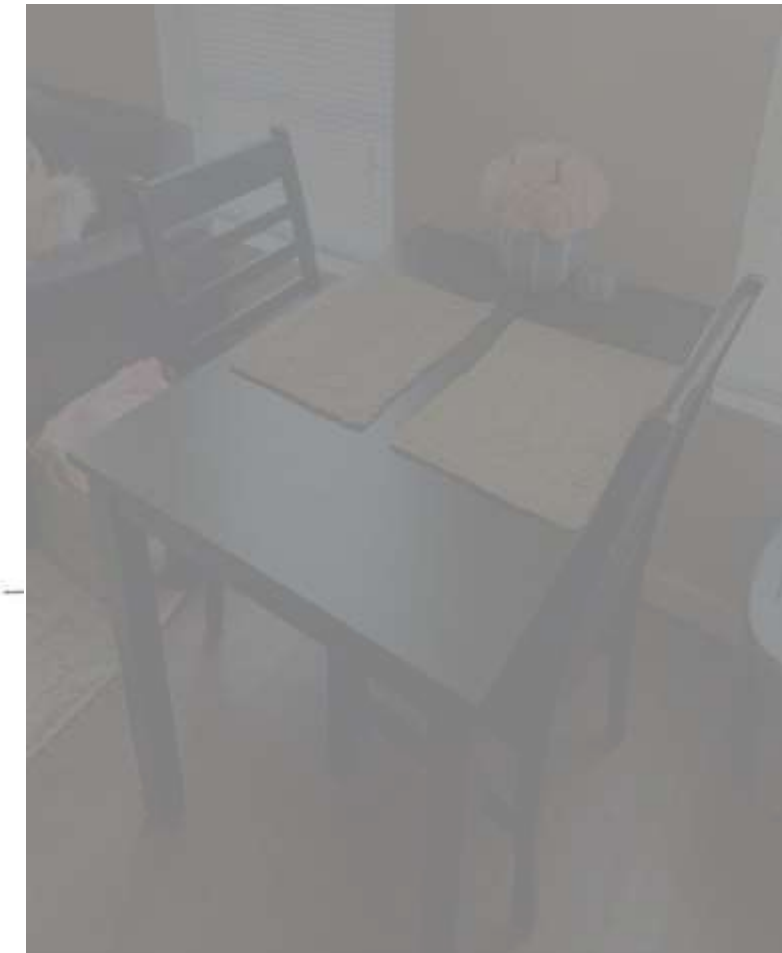
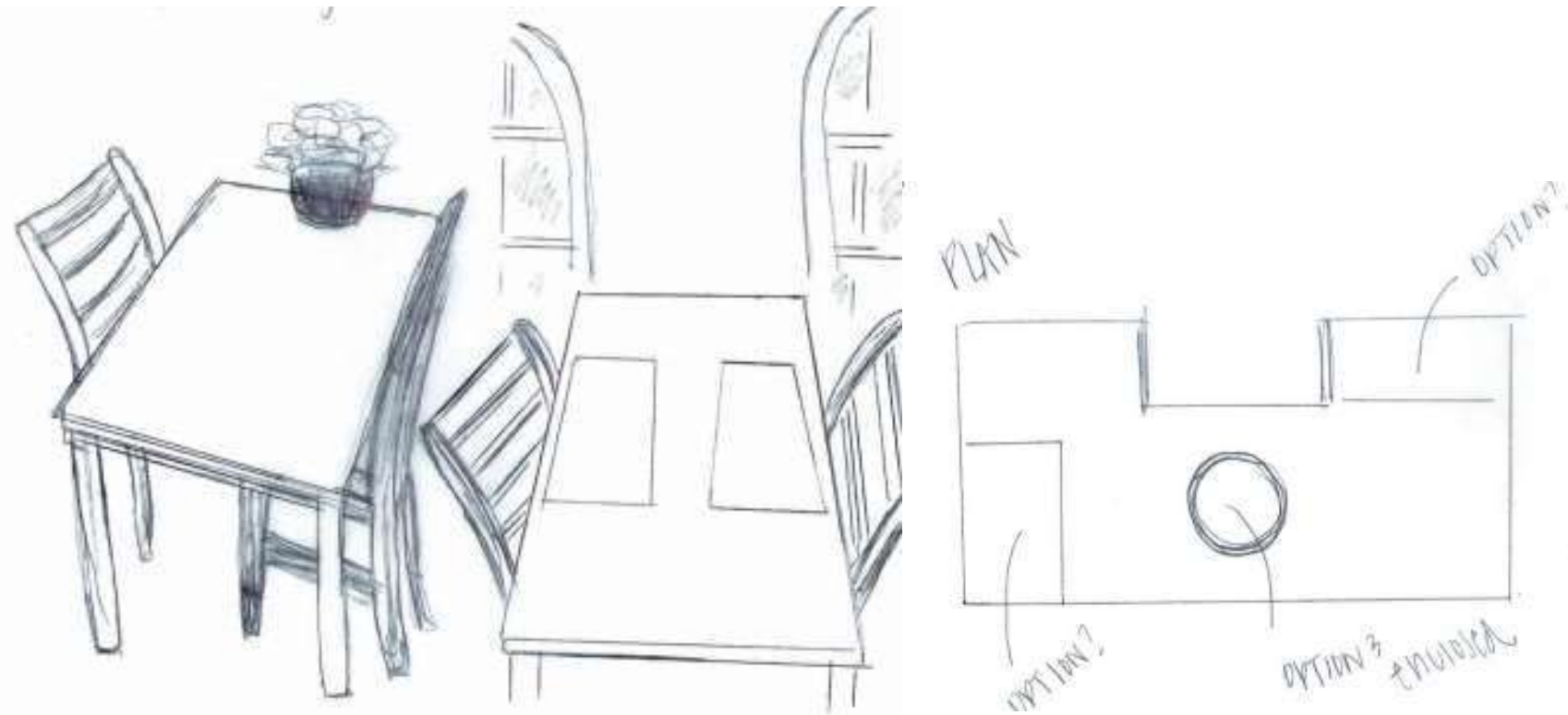
Activity Space Studies

Socializing



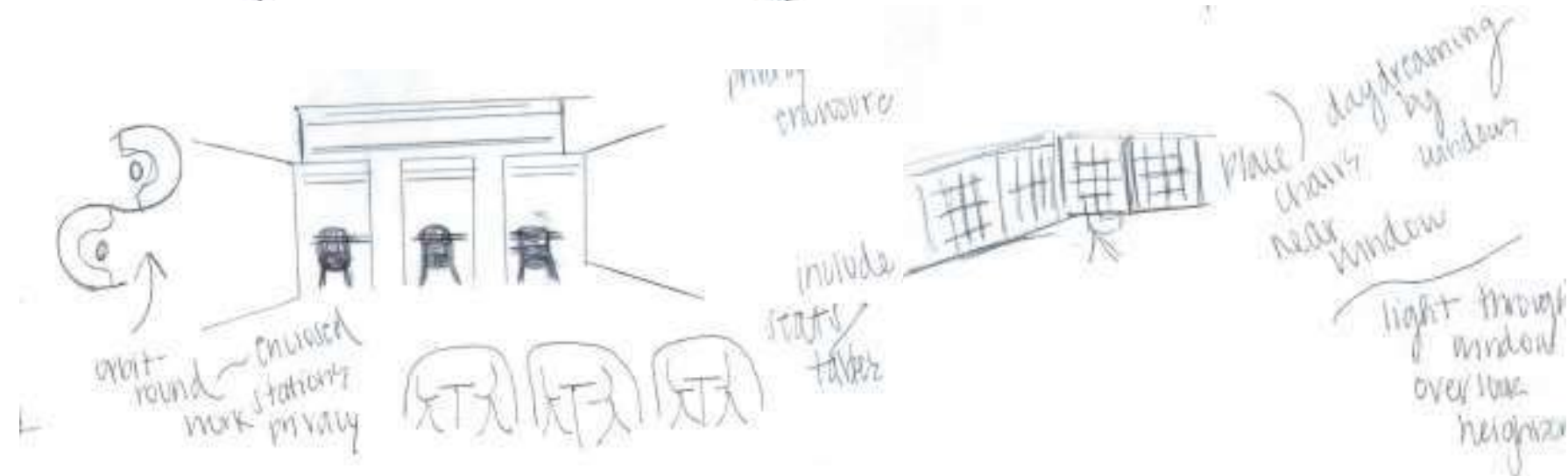
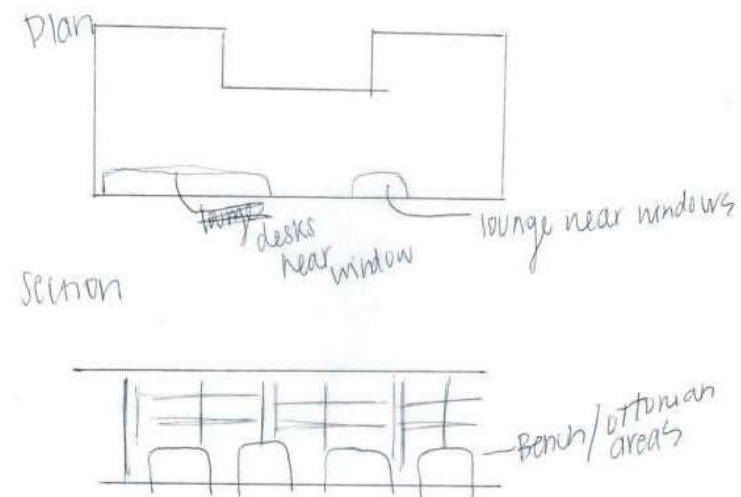
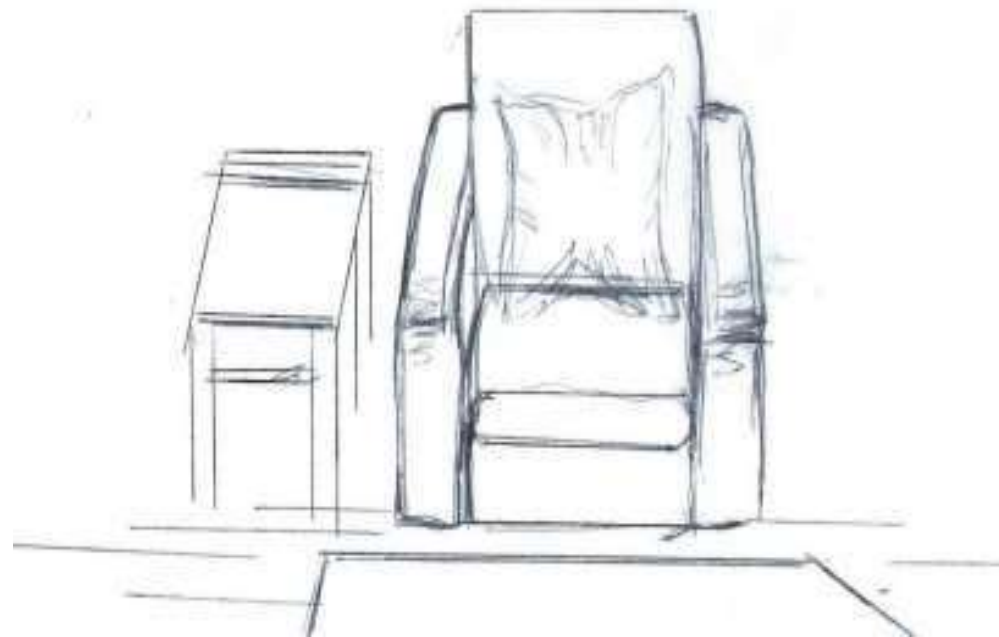
Activity Space Studies

Group Planning



Activity Space Studies

Daydreaming



Space Standards

