

# *Portfolio 1*

---

*Corey Eads*

16 February 2021

*IDSN 3202*

# *Stakeholder Profiles*

## *Owner:*

- *Real Estate Developer*

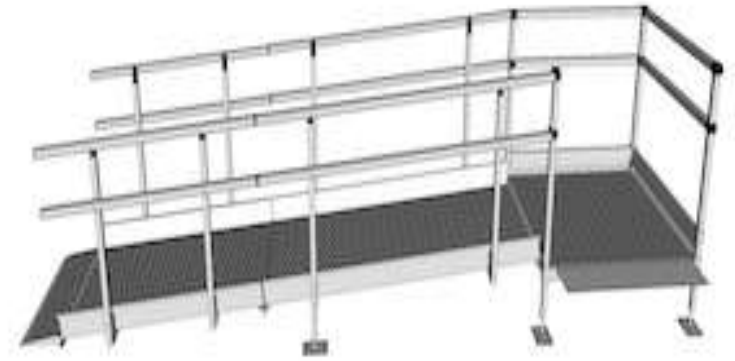
## *Client:*

- *Developer*

## *User:*

- *Seniors*
- *Elderly*
- *Retirement*





## *Research*

### *ADA passageways/doors*

- Passageways must be at least 36 inches
- Wheelchair ramp
- Handicap Accessible
- Cleared space for emergency exits

### *Ring Video Doorbell*

- Answer the door from anywhere
- High security at front door
- Camera Accessible at any time
- Motion Detector



### *Kwikset Hardware*

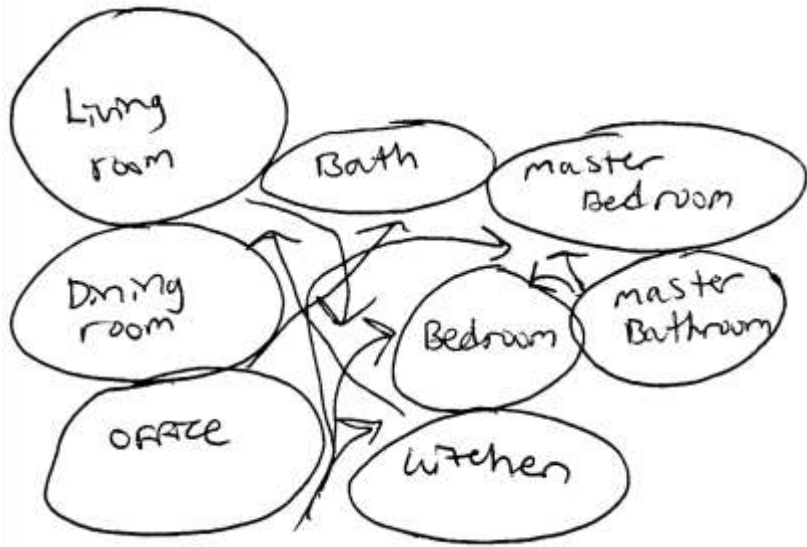
- High standard Security
- Safe doorknobs that do not require much strength to open
- Easy entry requirements for seniors
- Kwikset smart codes on doorknobs to make it easier for users to enter and exit

# Planning

Living Spaces	Square Feet	Total
<b>Living Room</b>	22'x20'	440 ft
<b>Kitchen</b>	14'x12'	168 ft
<b>Kitchen Nook</b>	8'x10'	80 ft
<b>Bathroom</b>	11'x8'	88 ft
<b>Office</b>	12'x10	120 ft
<b>Laundry Room</b>	8'x5'	40 ft
<b>Master Bedroom</b>	22'x12'	264ft
<b>Master Bathroom</b>	15'x12'	180 ft
<b>Guest Bedroom</b>	12'x16'	192 ft

Total Square Feet: 1572

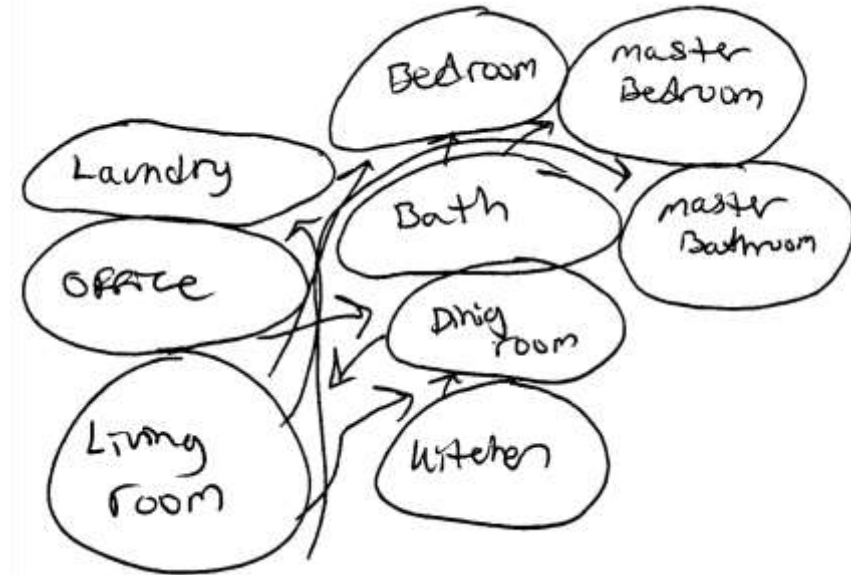
# Bubble Diagrams



Option 1

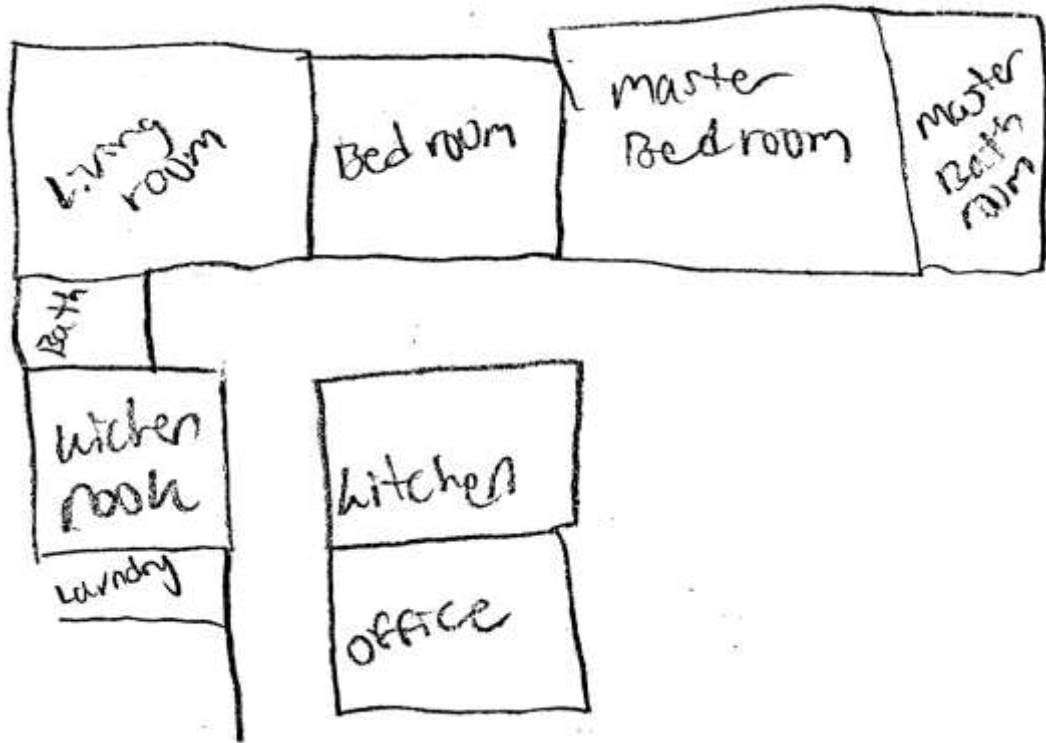


Option 2

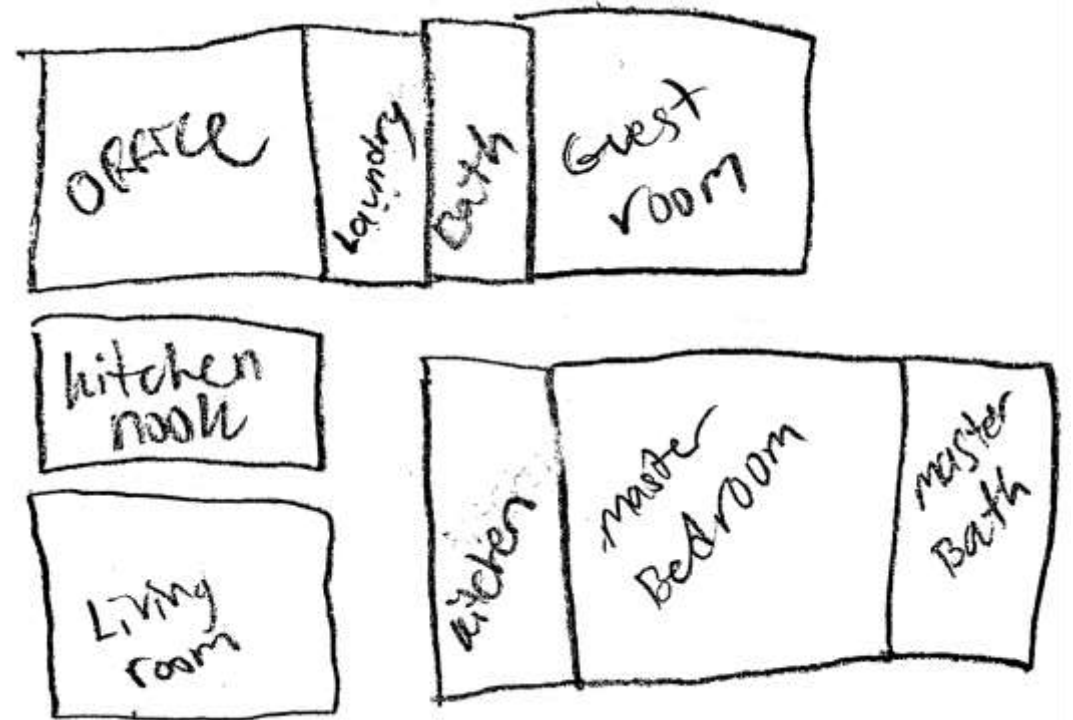


Option 3

# Block Diagrams



Option 1



Option 2



# *Welcomed*

- Safe
- Relaxed
- Quiet
- Comfortable
- Peaceful







*Inspiration*

---