



IDSN 3202

SENIOR LIVING CONDO

Myah Kendrick

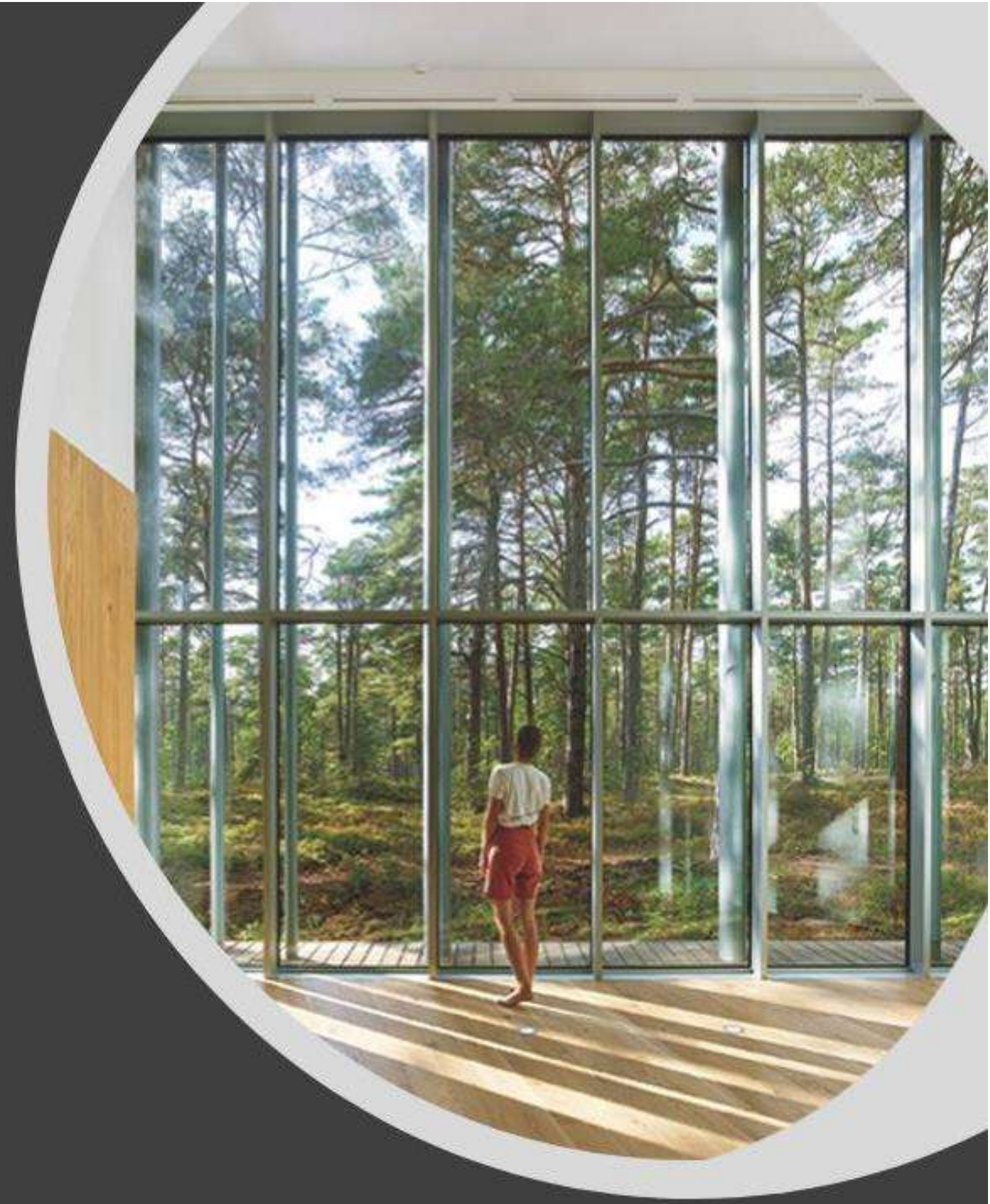
SPRING 2021

# STAKEHOLDER PROFILES

- OWNER AND CLIENT
  - real estate developers
- USERS
  - 55+ age/retired  
community/mentally or physically  
disabled bodied
- SIZE AND NUMBER OF BEDROOMS
  - 1,000-3,000 sq ft with at least 2  
beds/2 baths

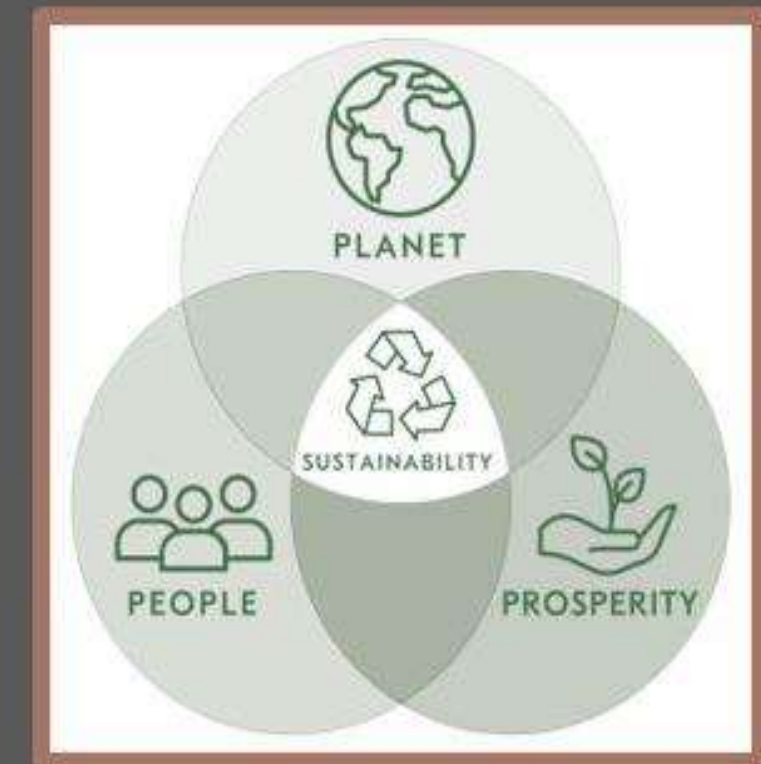
# SUSTAINABLE DESIGN

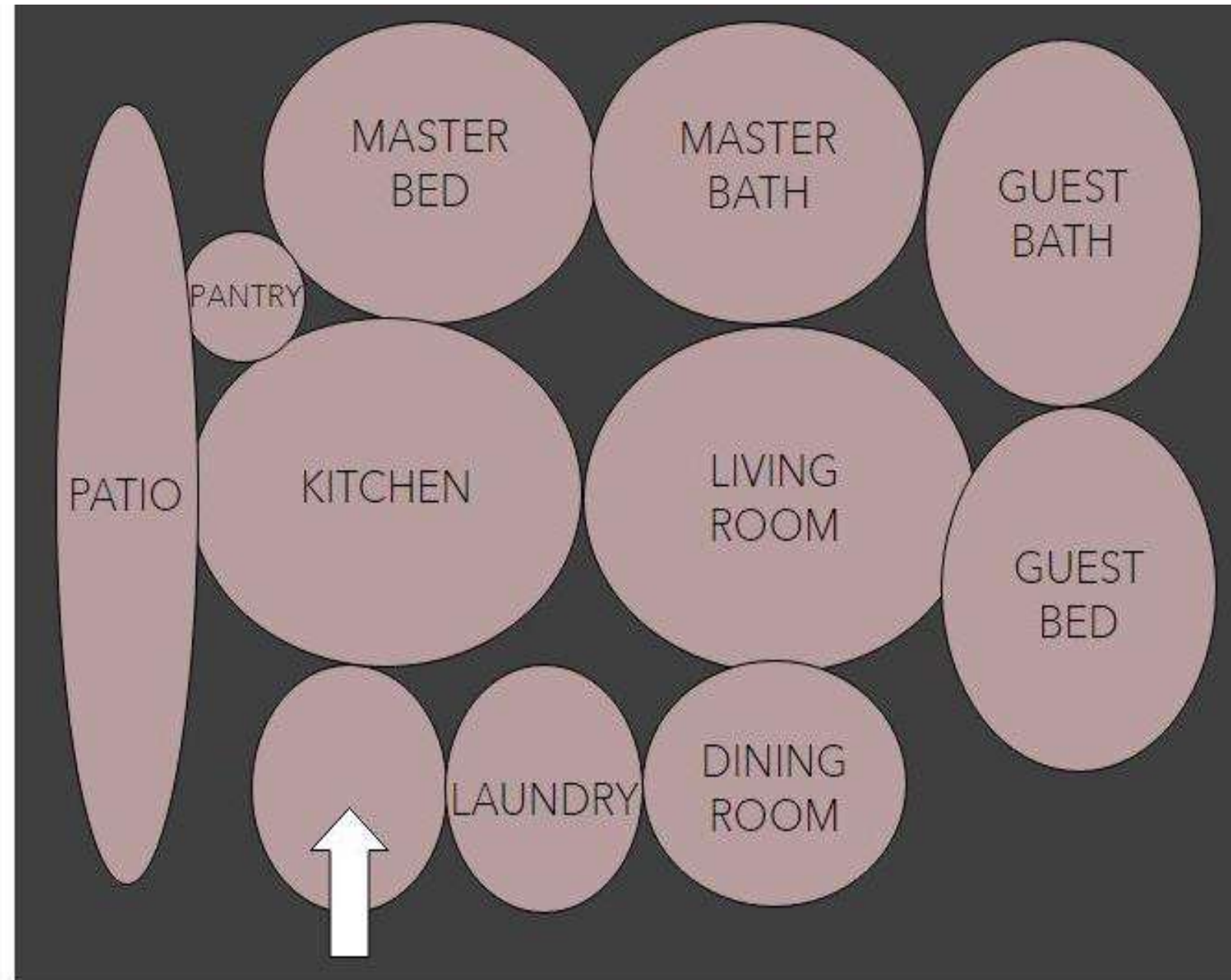
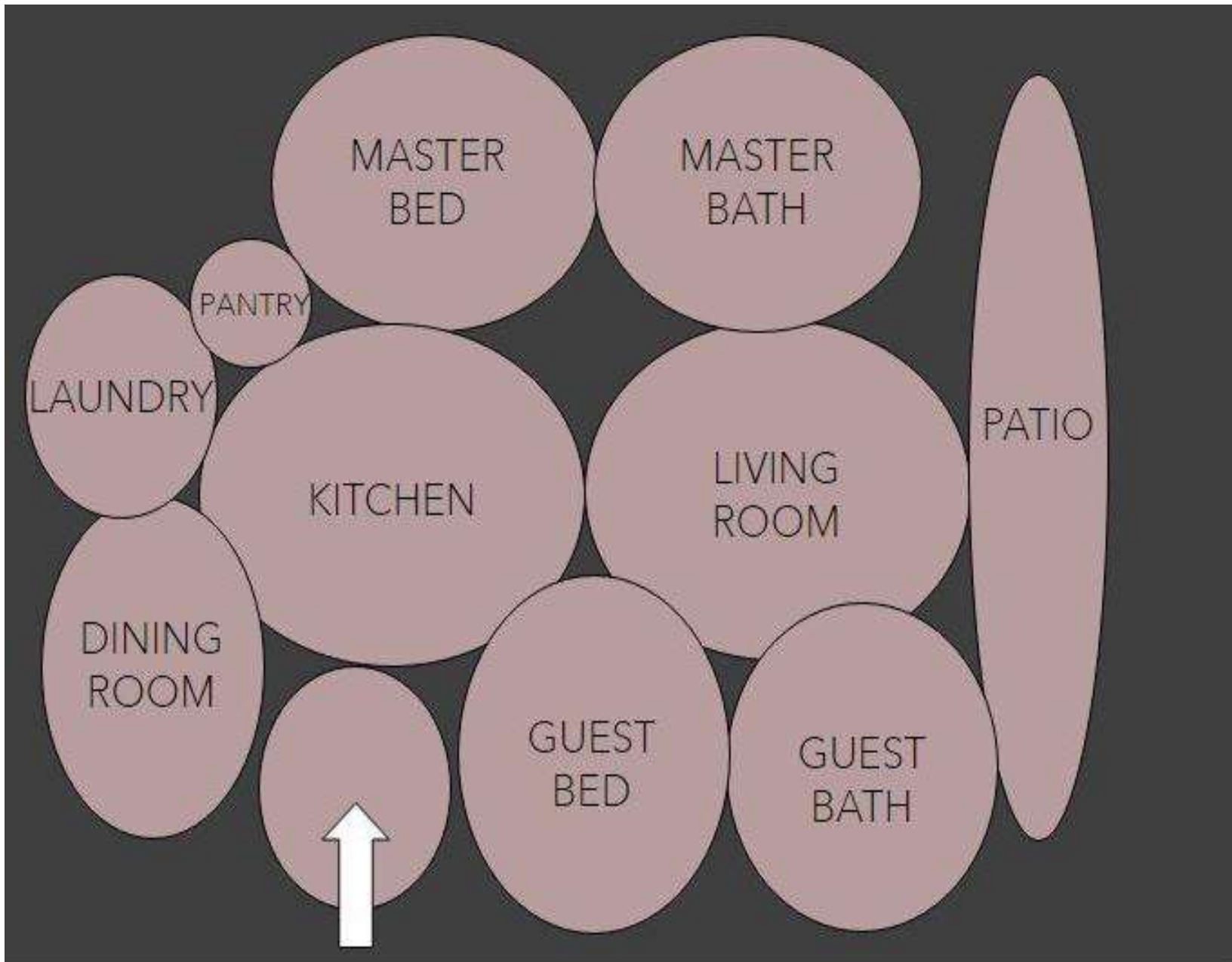
- Sustainable Design, dealing with architecture and interiors specifically, is involved with such factors as determining efficient and effective use of space, selecting construction materials that offer low environmental impact and lowering pollution, waste and energy consumption.
- Sustainable Design is important to consider when dealing with clientele and users who are aging in place. The reason for this is to make sure the group of users are in the healthiest environment possible. Other health problems can be a concern starting at a certain age, so it is important to make sure they are in a safe and beneficial space to help their well-being and increase responsibility and self-autonomy.



# RESEARCH

- **Heating and lighting are the two most crucial factors interior designers have influence over.**
  - CURTAINS AND DRAPES
  - WINDOW COVERINGS, BLINDS, AND SHADES
  - CARPETS RETAIN 10% OF HEAT
  - LIGHTER COLORS REFLECT LIGHT/DARK COLORS ABSORB
  - MIRRORS REFLECT LARGE AMOUNTS OF LIGHT/HEAT
- **Pick materials and products that have the lowest environment impact.**
  - RAPID RENEWAL PRODUCTS SUCH AS BAMBOO
  - UPCYCLING/RECYCLING
  - PRODUCTS THAT ARE MULTIPURPOSE AND MULTIFUNCTIONAL
  - CHOOSE QUALITY OVER QUANTITY, CLASSICS OVER TRENDY, AND SIMPLICITY OVER EMBELLISHMENTS
  - FLEXIBLE GENERALLY EQUALS LONGEVITY
  - MODULAR CARPETS DON'T REQUIRE A COMPLETE CHANGE
  - CARPETS IMPROVE AIR QUALITY BY TRAPPING DUST PARTICLES, ALSO GREAT SOUND INSULATORS
  - NATURAL LIGHT IS IMPORTANT
  - PLANTS HELP PURIFY THE AIR
  - BIOPHILIC DESIGN GENERALLY GIVES THE USER A CALMING EFFECT.





# BUBBLE PLANS



# BLOCK PLANS



# SQUARE FOOTAGE

ENTRY/MUD ROOM	8X8
LAUNDRY	8x7
KITCHEN	13x15
DINING ROOM	11x8
PANTRY	7x6
LIVING ROOM	12x14
MASTER BED	12x12
MASTER BATH	10x12
GUEST BED	10x10
GUEST BATH	8x10
PATIO (NOT INCLUDED IN TOTAL)	14x10
<b>SQ. FT. TOTAL</b>	<b>1,057 SQ. FT.</b>



## MINIMAL BIOMIMICRY

The concept behind this design is a symbol of growth and renewal. Simplicity is key and going back to primitive woodsy roots will provide a sense of familiarity. The colors are inviting, clean, and simple.





INSPIRATION



INSPIRATION