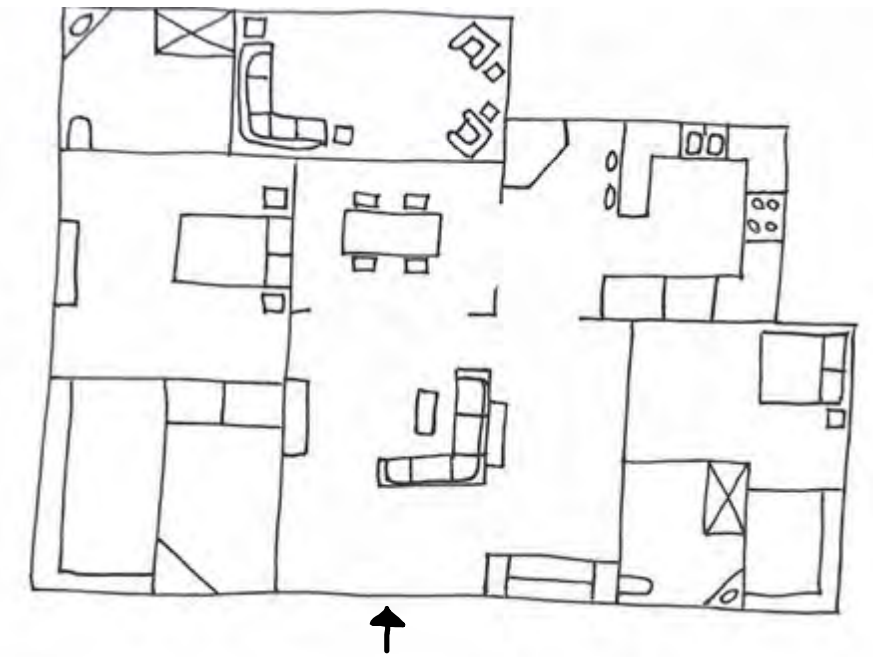
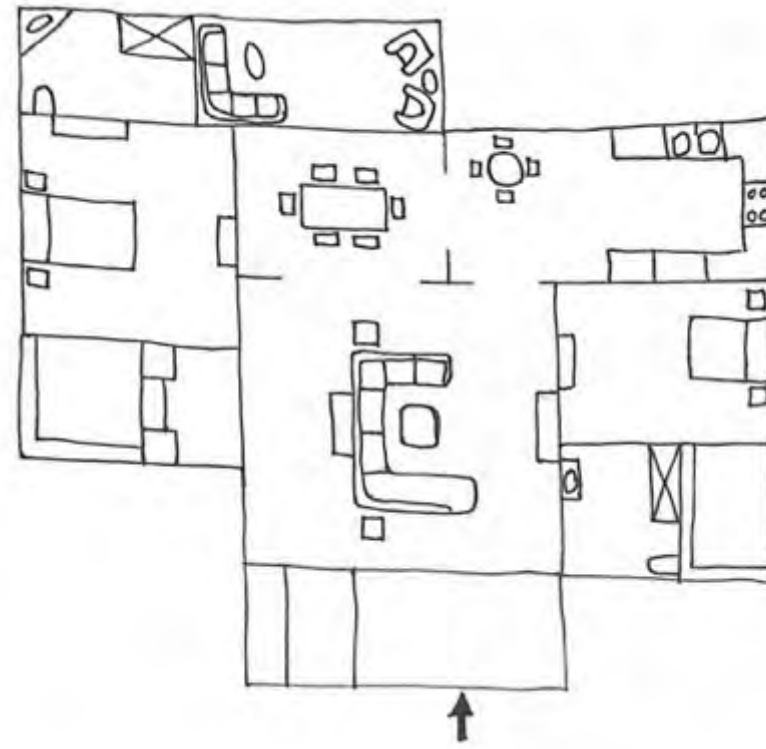
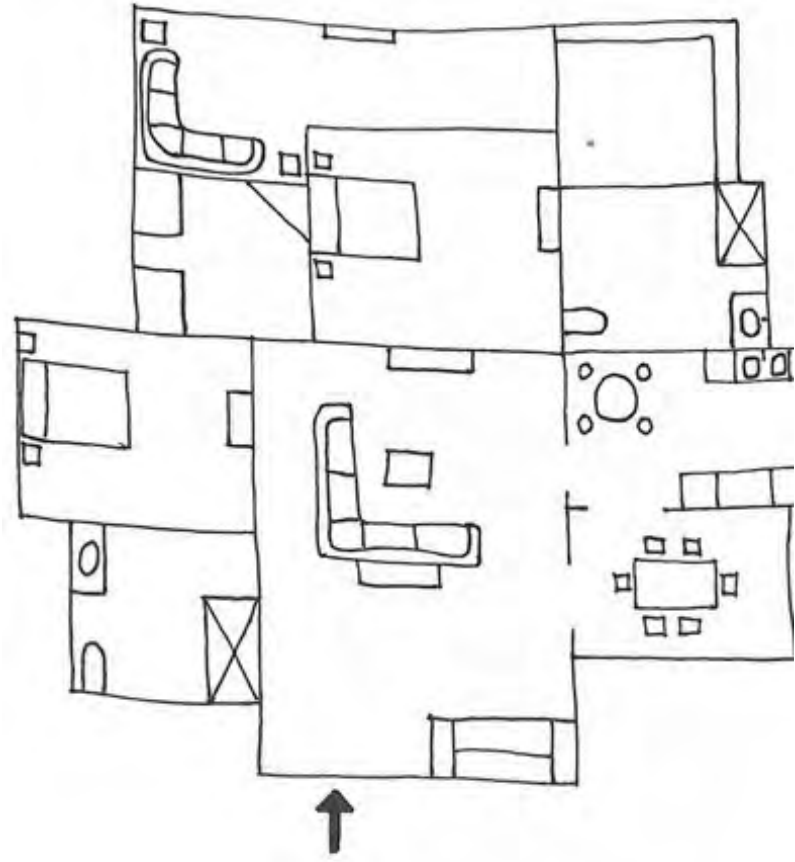


SENIOR LIVING CONDOMINIUMS

UNIVERSAL, SUSTAINABLE, AND BIOPHILIC DESIGN

PORTFOLIO II

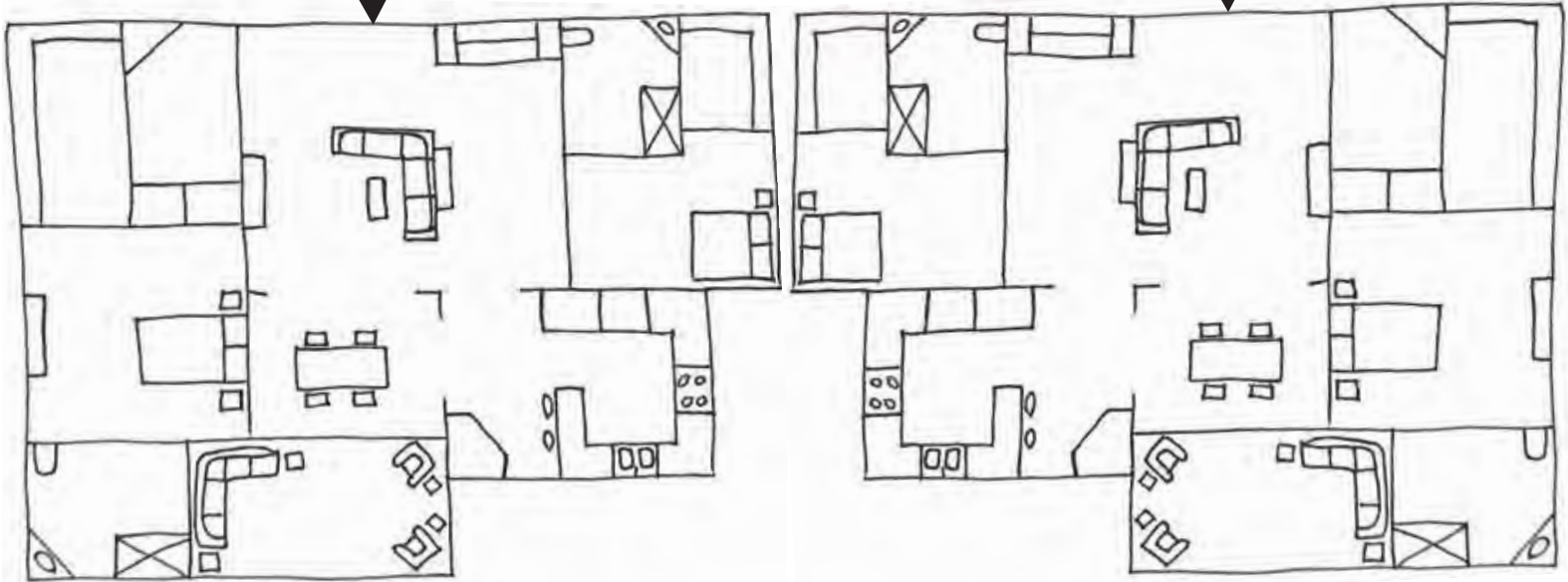
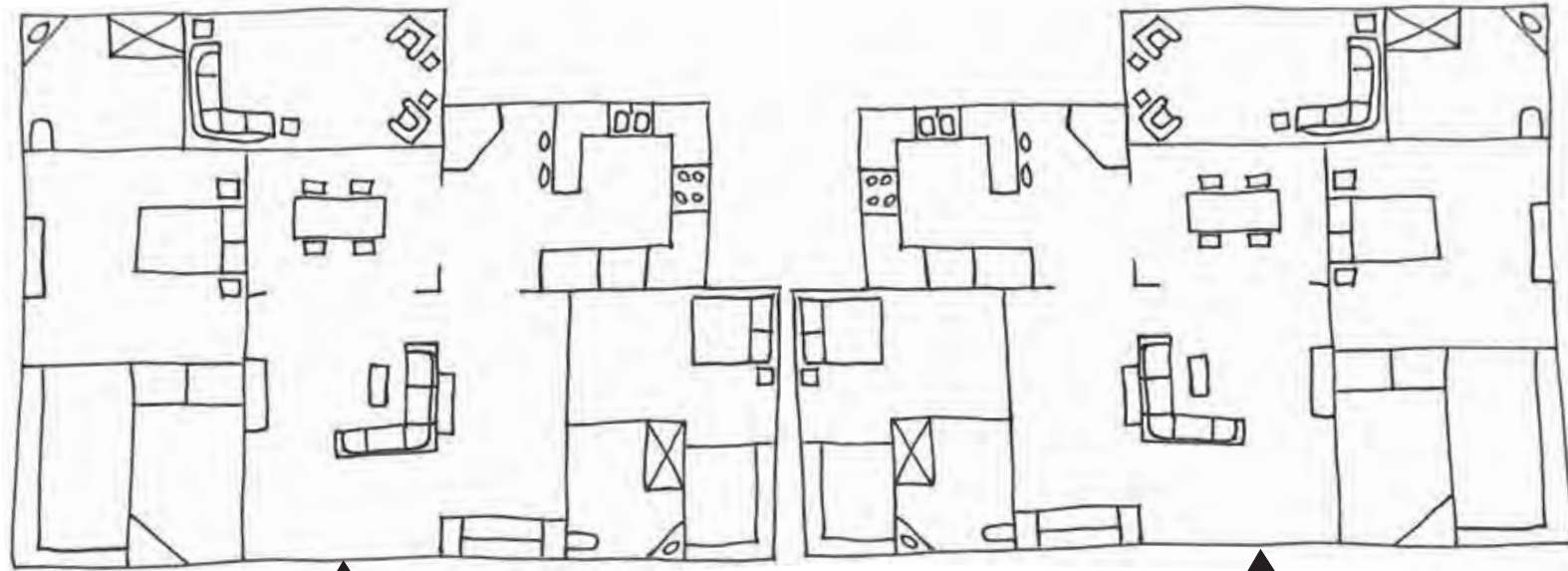
HANNA PADGETT



OPTION 1

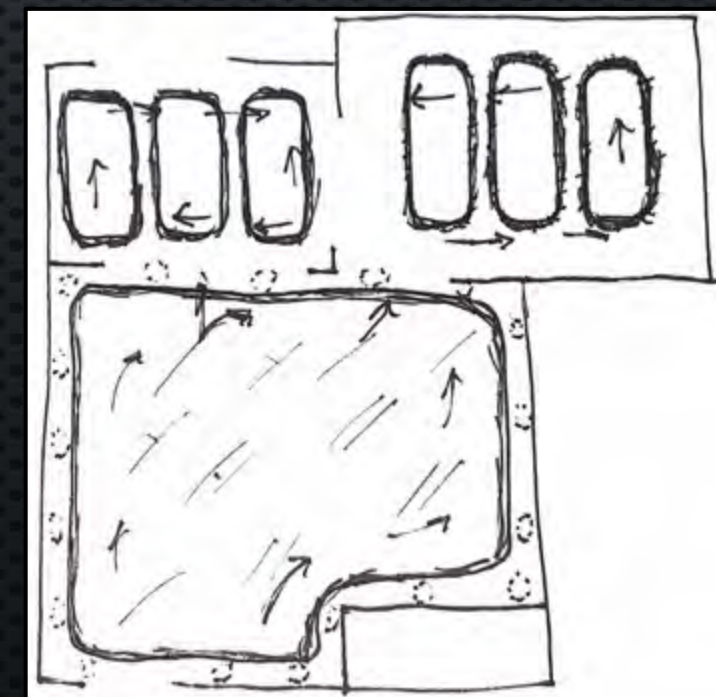
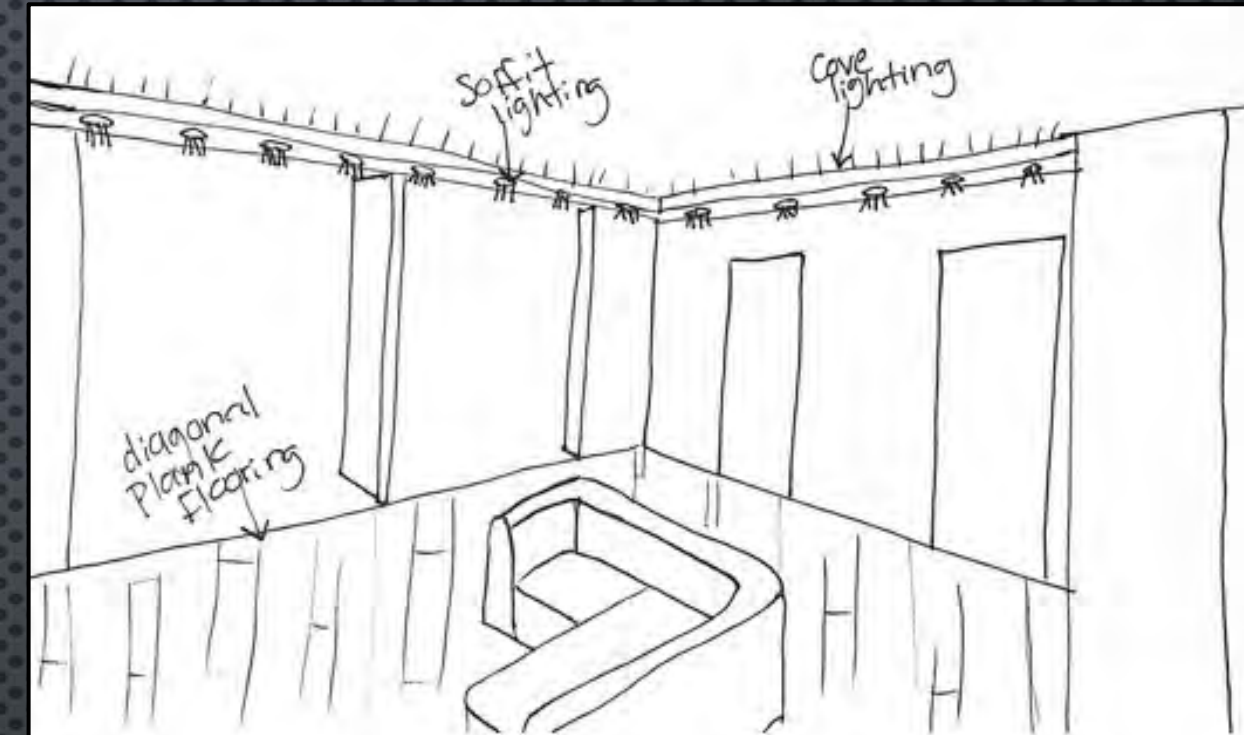
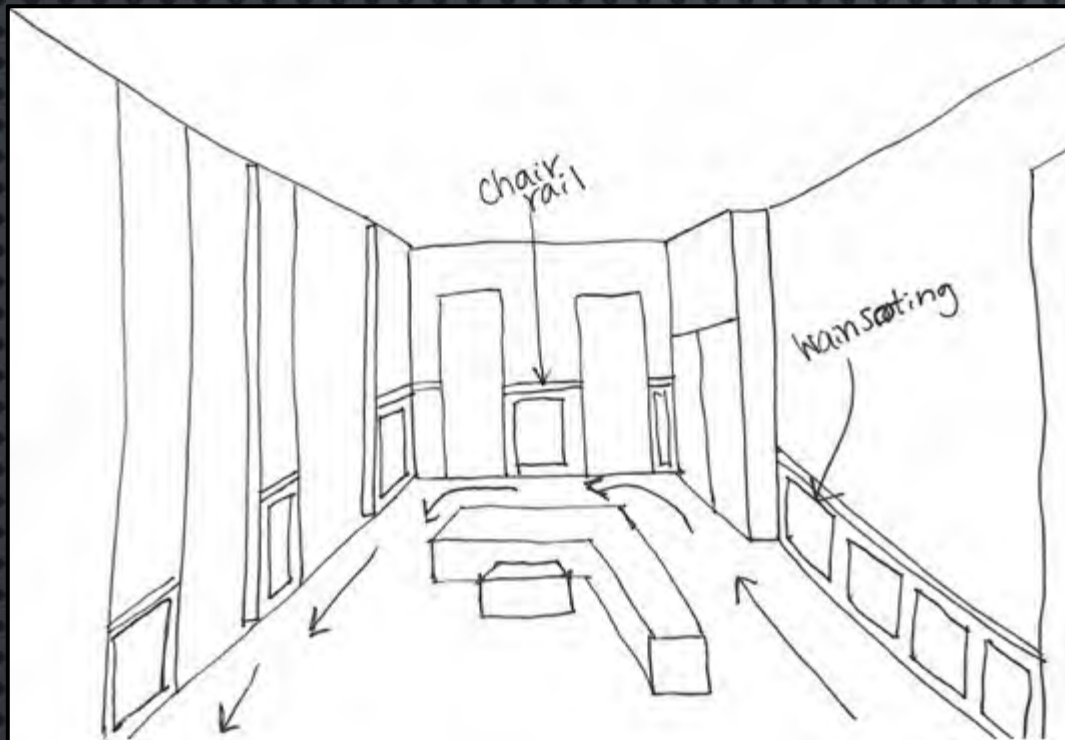
OPTION 2

OPTION 3



PRELIMINARY
SECOND
FLOOR

PROBLEM RESOLUTION EXPLORATION



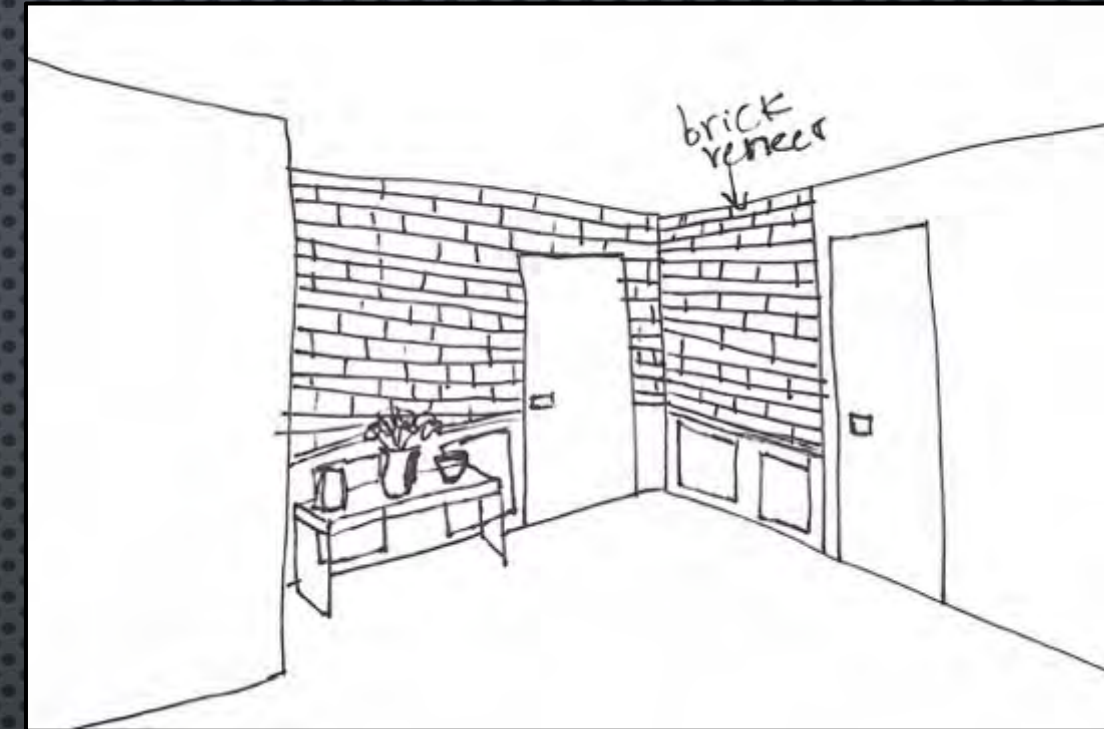
What physical and visual cues can you use to guide them on the path?

The use of wainscoting and chair rails leads the user around the living room that connects to each room of the unit.

How do people find their way through the condo?

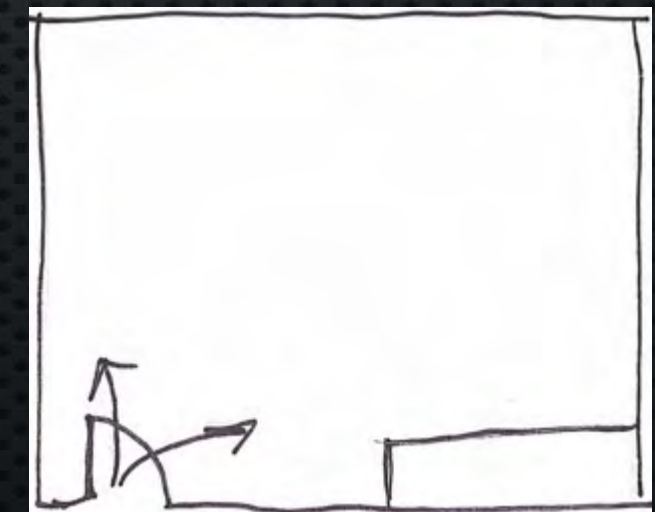
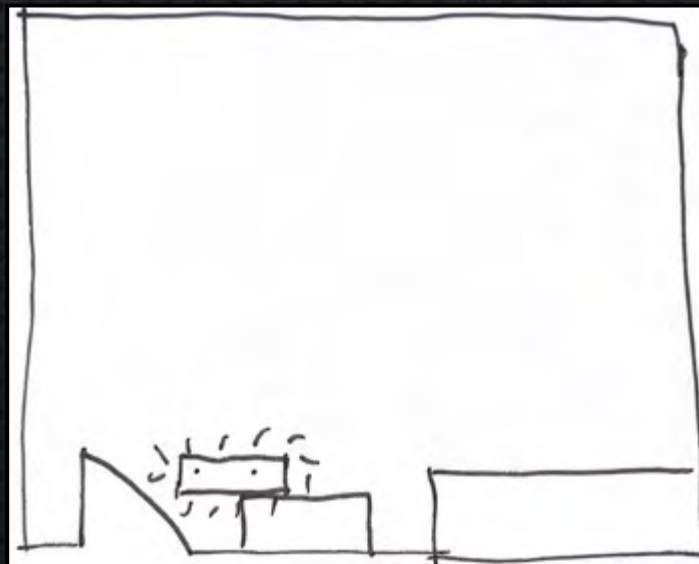
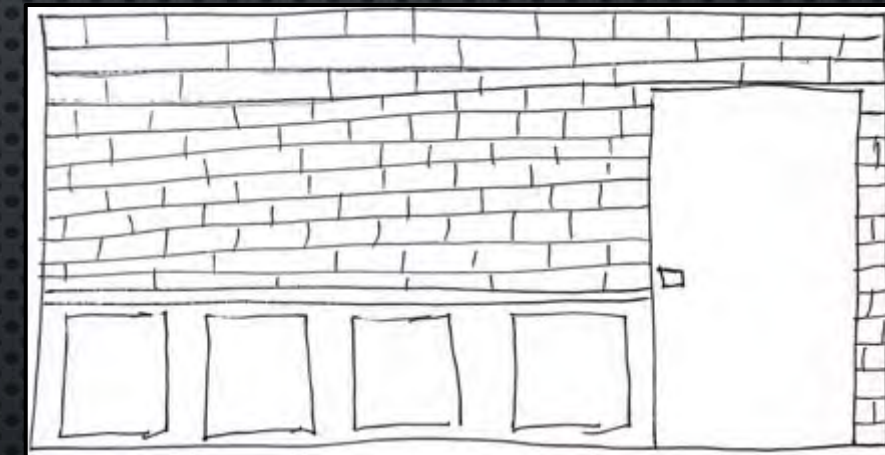
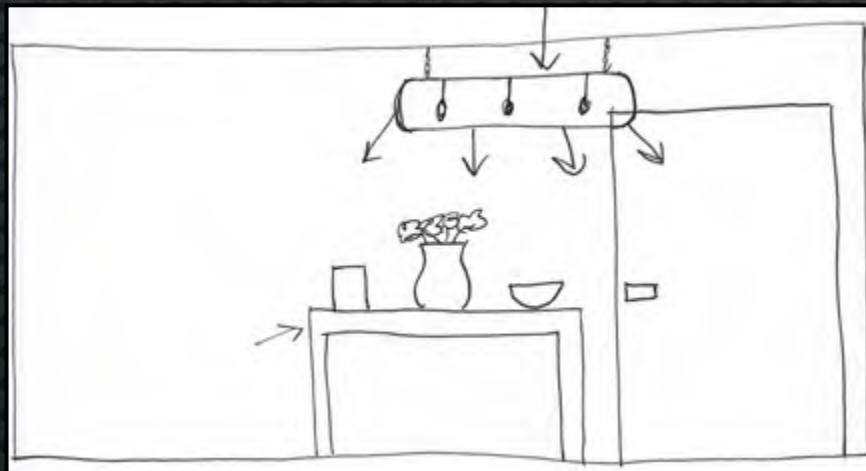
The soffit and cove lighting that borders the living room, kitchen, and dining room, as well as diagonal plank flooring, gives direction to the user in how to travel through the space.

PROBLEM RESOLUTION ENTRY

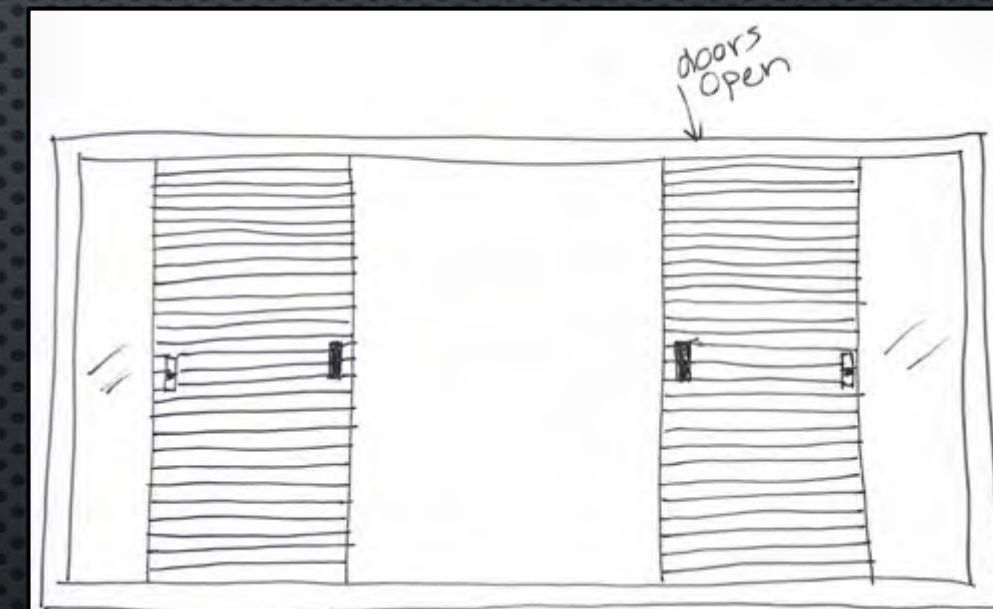
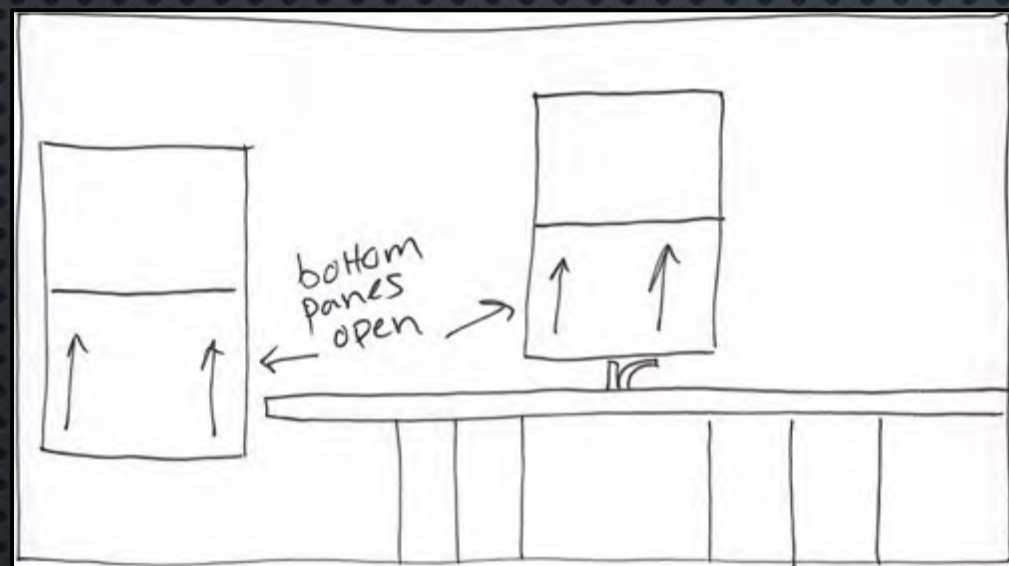
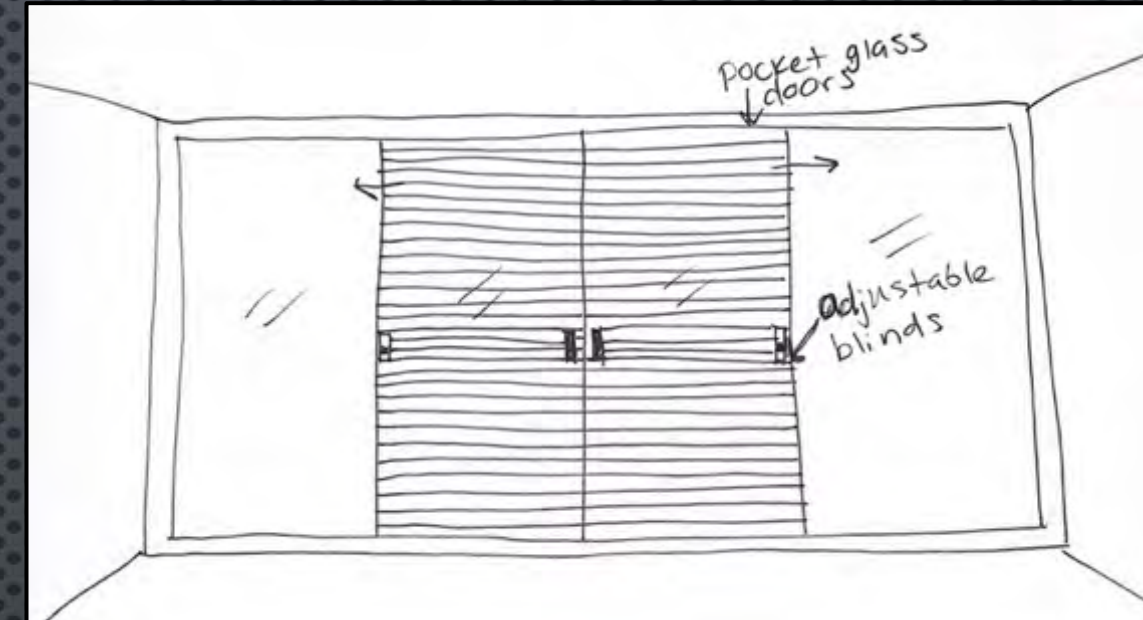


What physical and visual cues encourage a visitor to enter and explore the space?

Incorporating a brick veneer around the general foyer area and a wooden table with décor gives a warm feeling when you enter. The use of a chandelier above the entry brightens and livens the space.

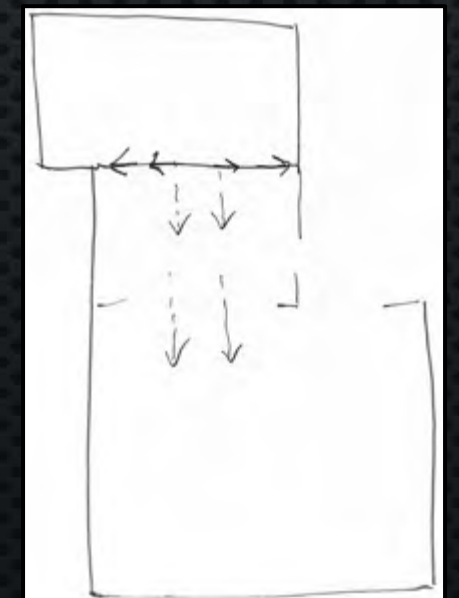
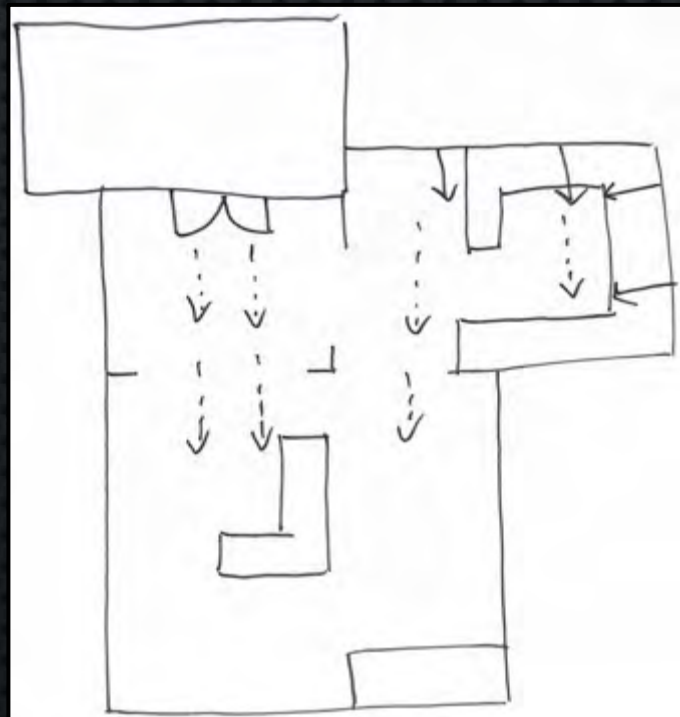


PROBLEM RESOLUTION DAYLIGHTING

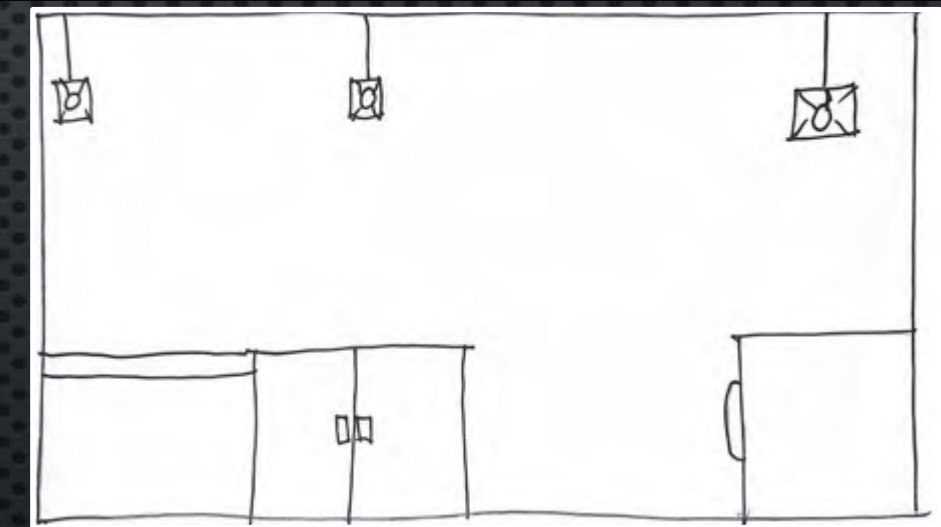
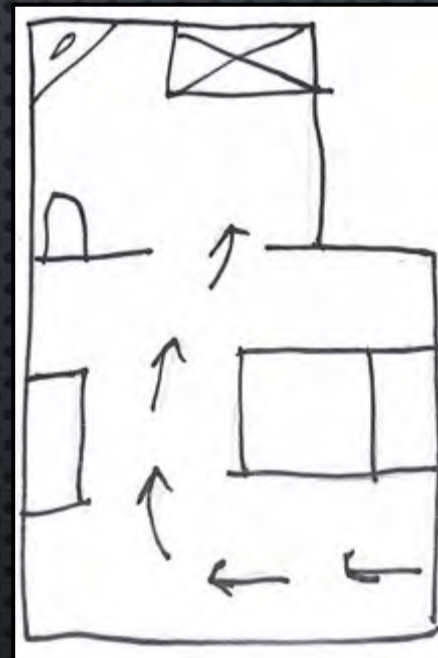
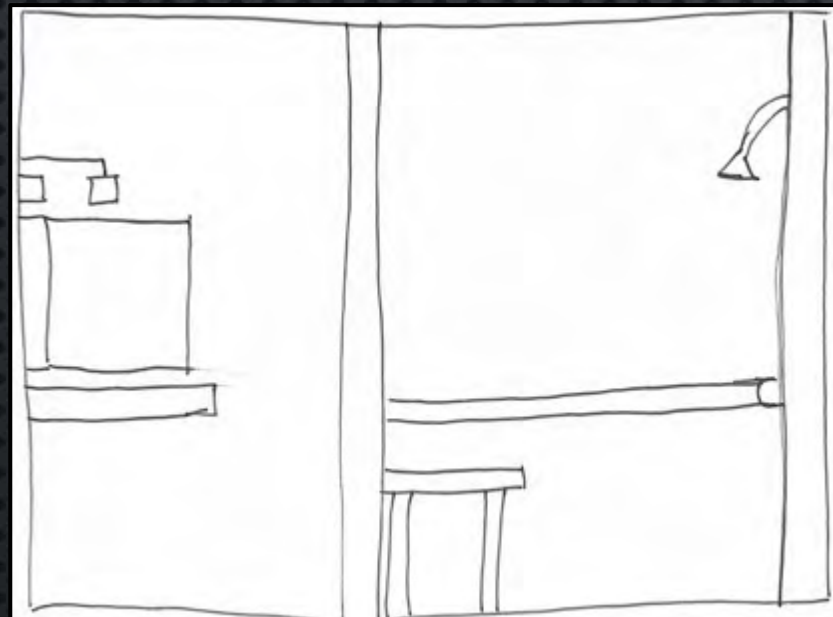
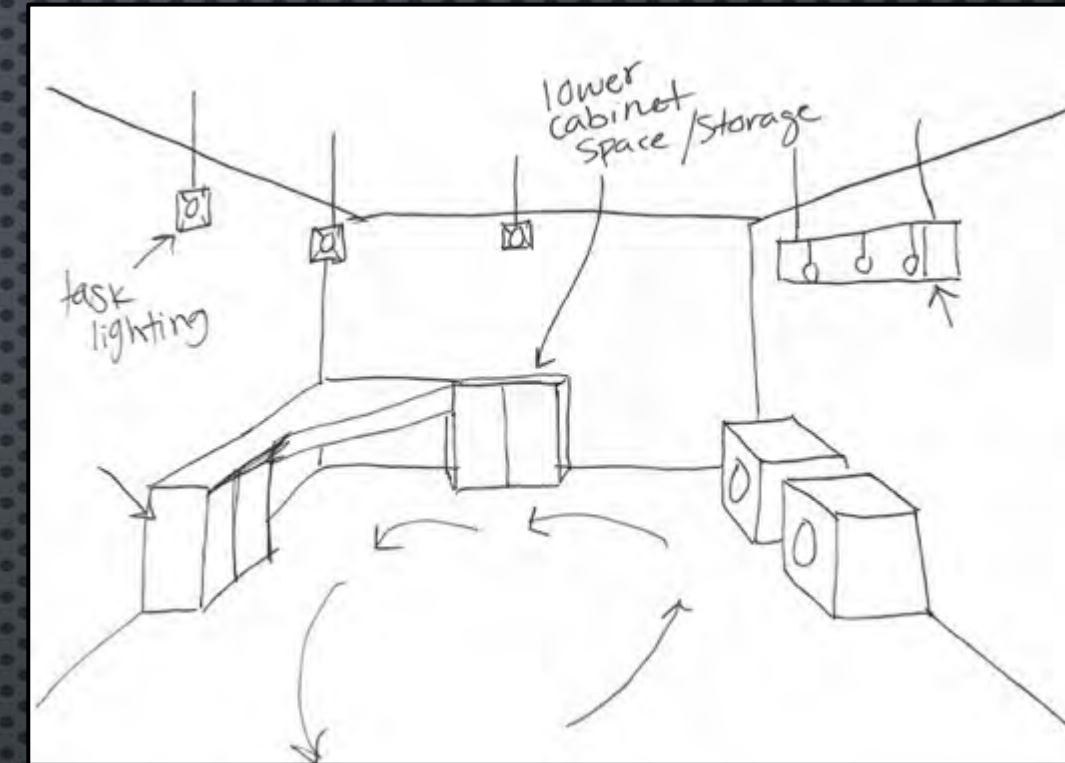


How does daylight enter the space and how do you moderate it?

Daylight enters the space through the kitchen windows and the sliding glass doors in the dining room. Light travels from those areas into the living room. The light is moderated with the slider adjustable blinds integrated between glass panes.

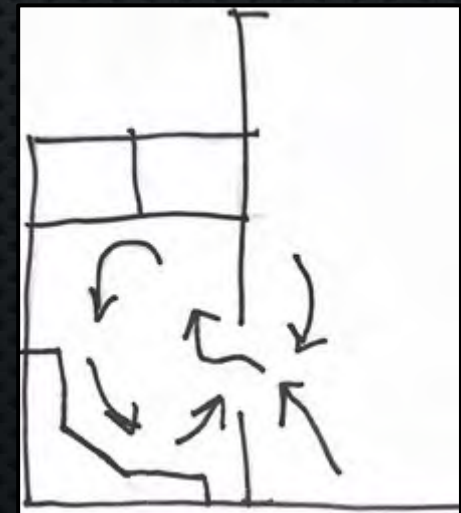


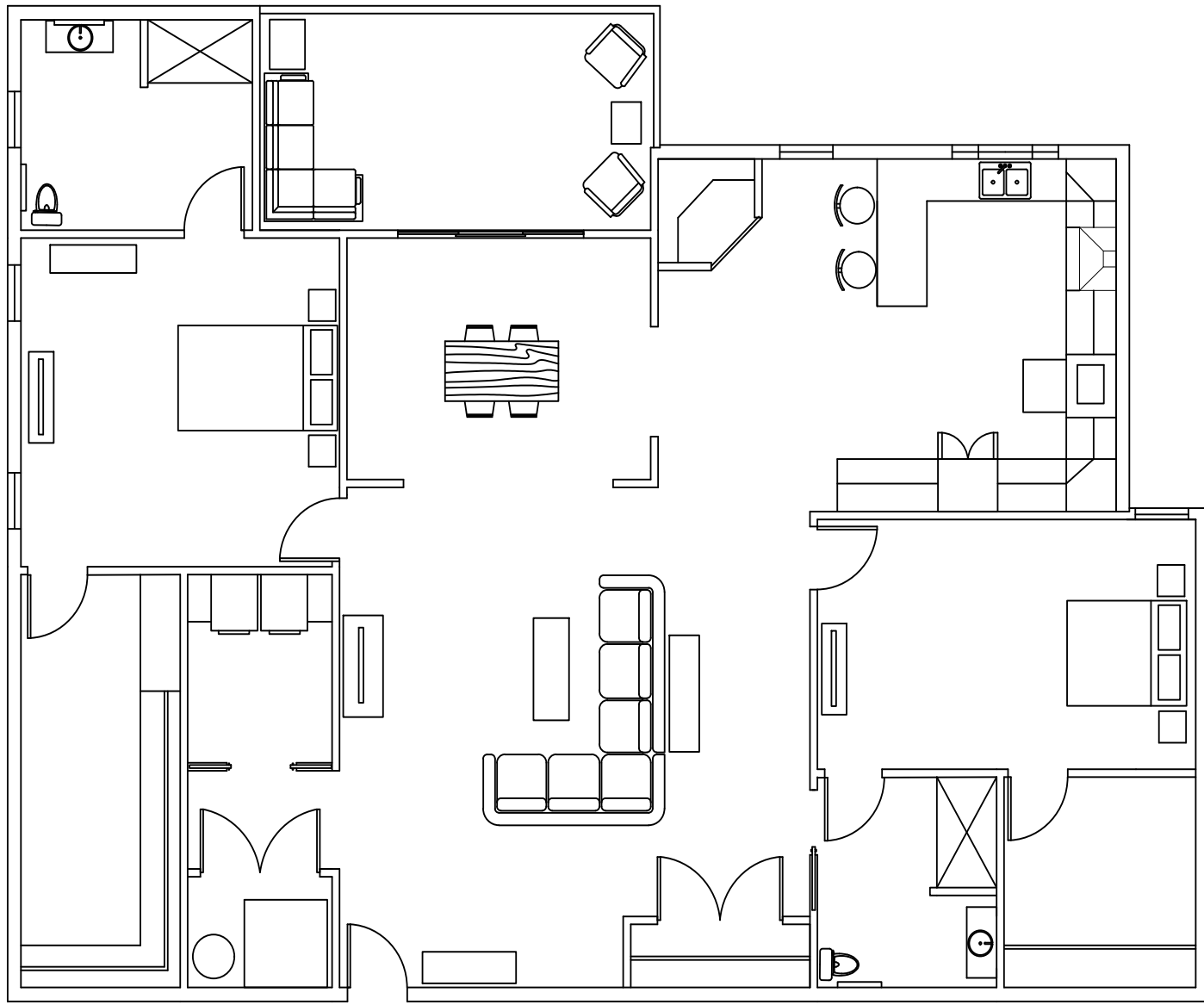
PROBLEM RESOLUTION SUPPORT SPACES



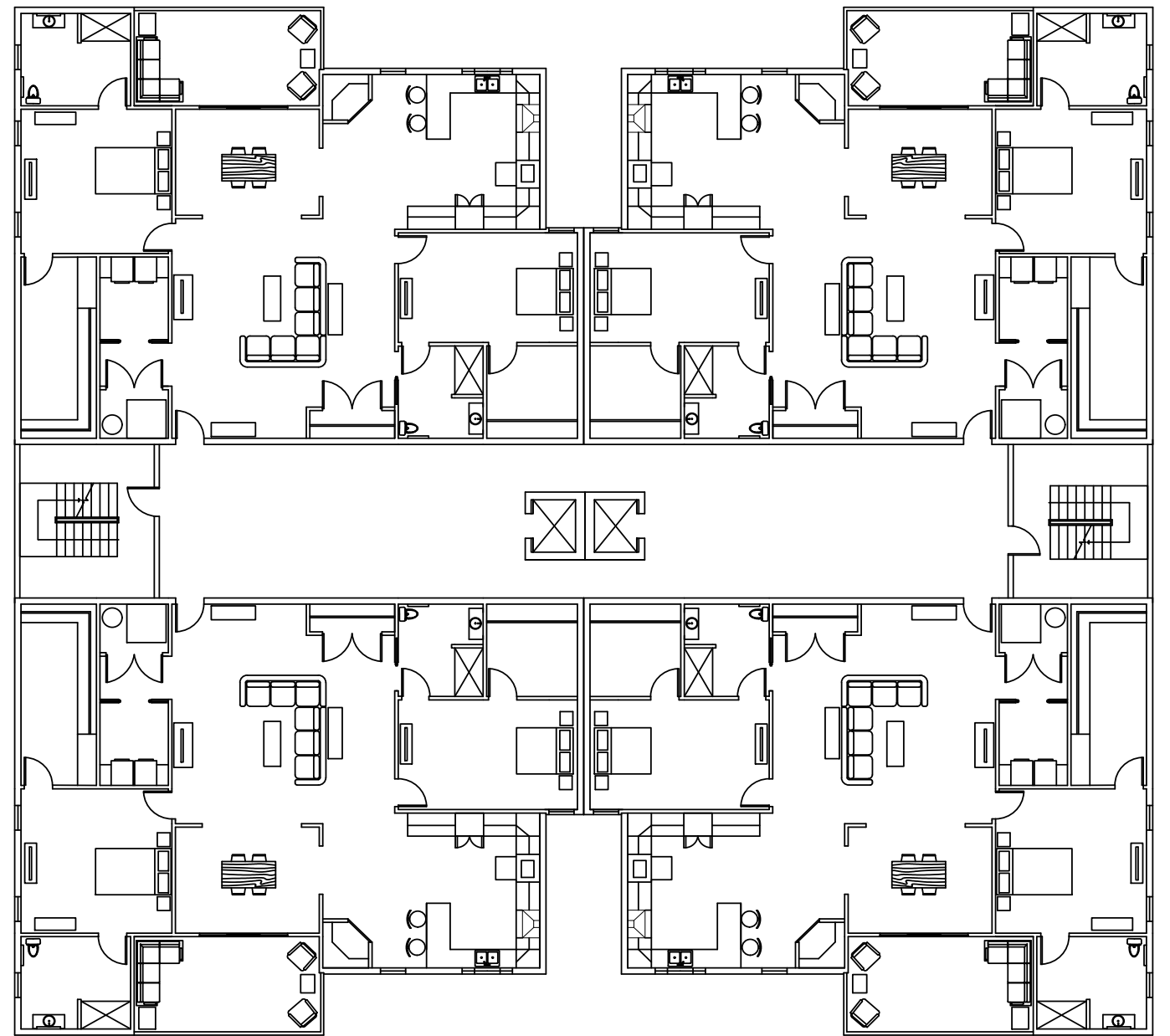
A corner sink allows for direct wheelchair roll-up and saves space. A wall next to the shower gives a sense of security and stability rather than having a glass enclosure.

An open work surface gives a handicapped user somewhere to do laundry and has 2 lower cabinets on the either side for storage.





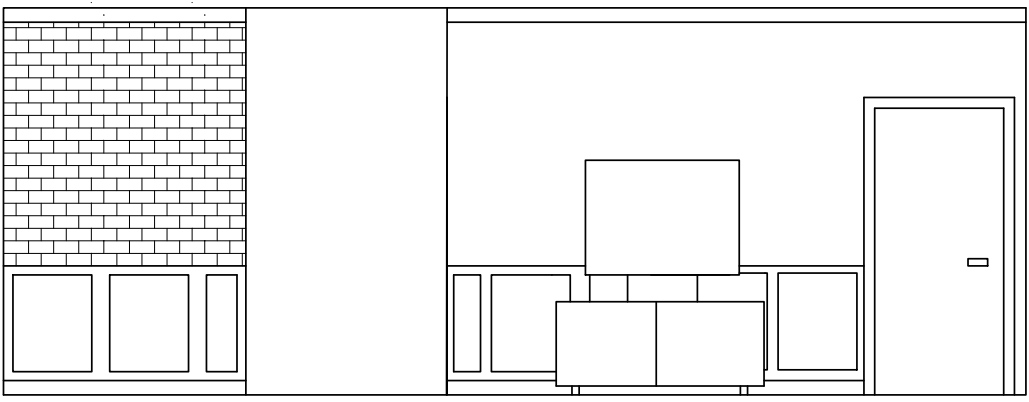
FURNITURE PLAN
SCALE: 1/8"=1'0



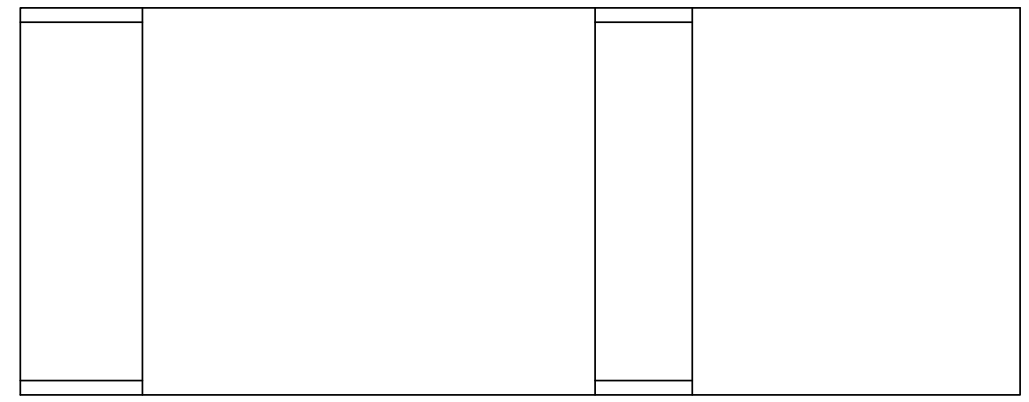
LEVEL 2
SCALE: 1/16"=1'0

Elevations

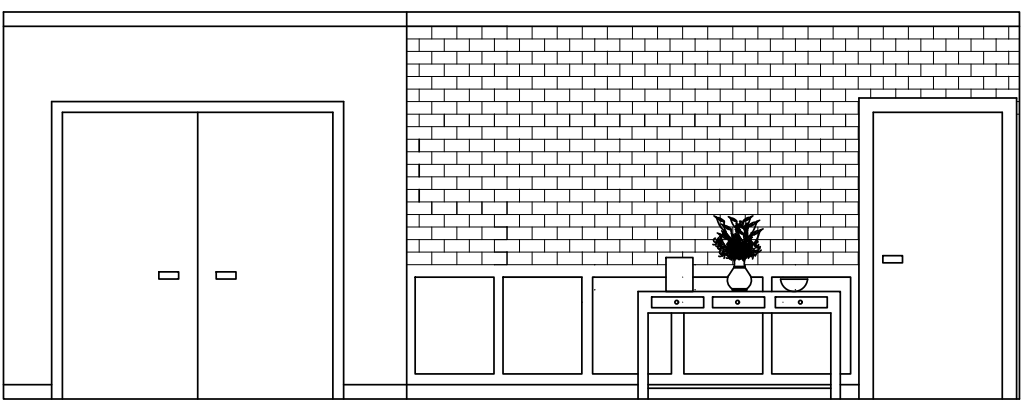
Scale 1/4"=1'0"



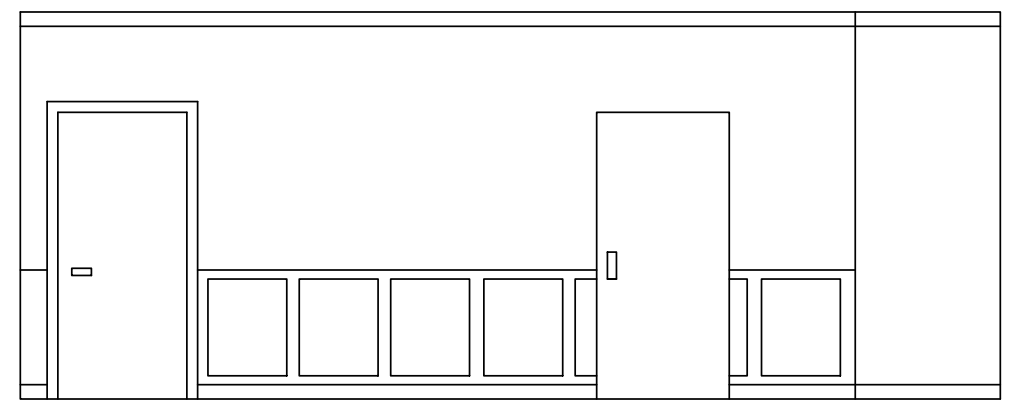
1 Living Room W



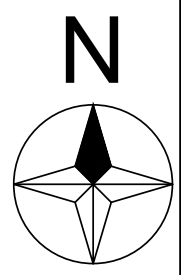
2 Living Room N



3 Living Room S

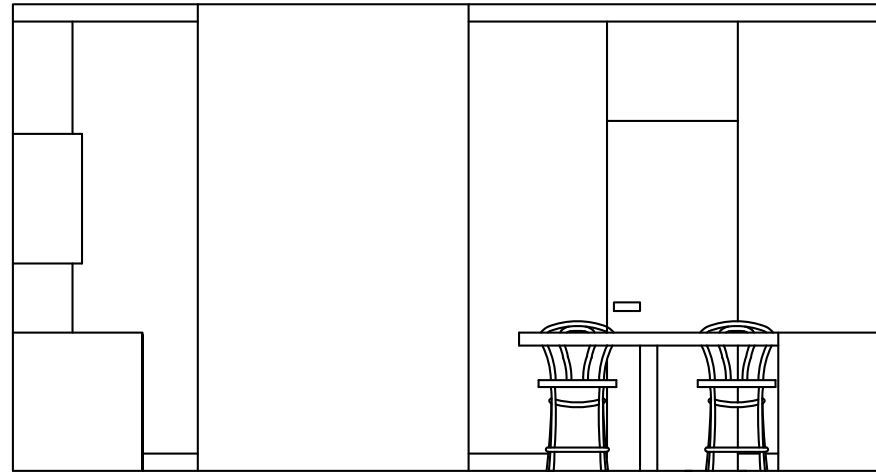


4 Living Room E

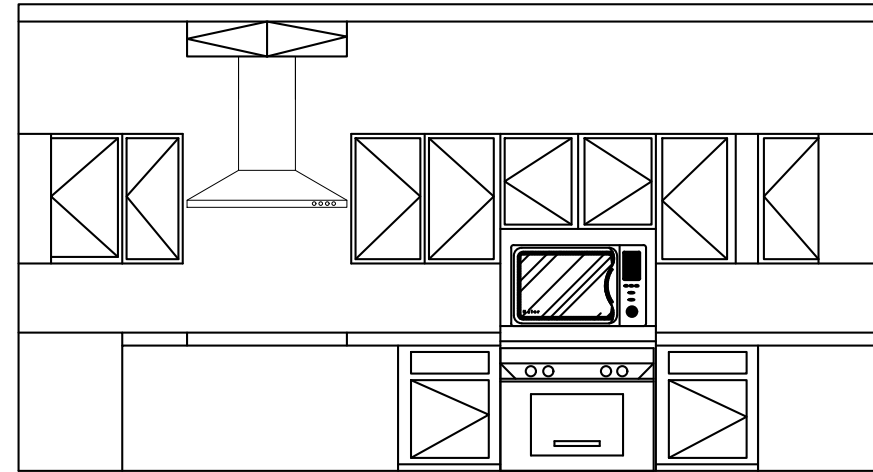


Elevations

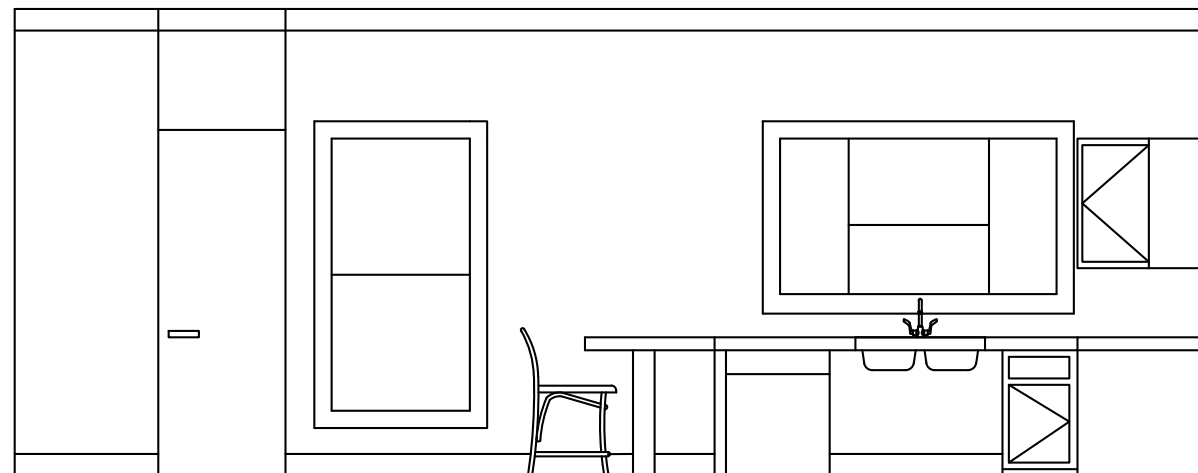
Scale 1/4"=1'0"



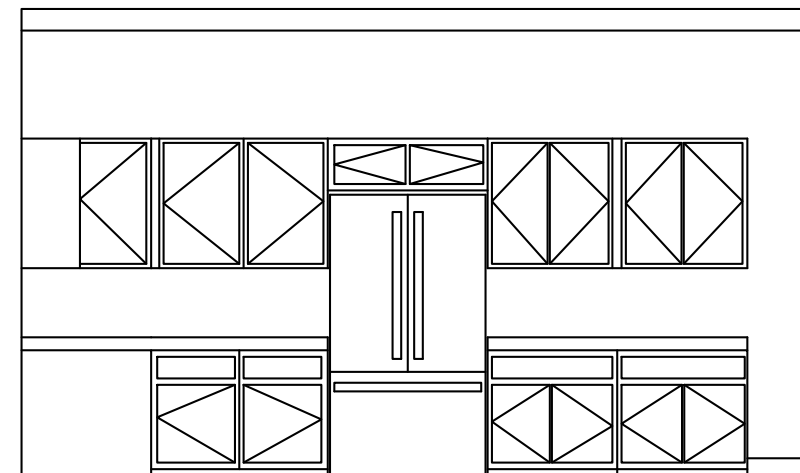
1 Kitchen W



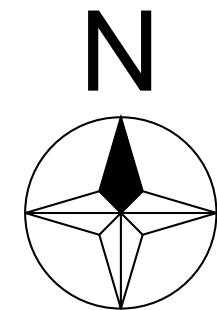
2 Kitchen E



3 Kitchen N

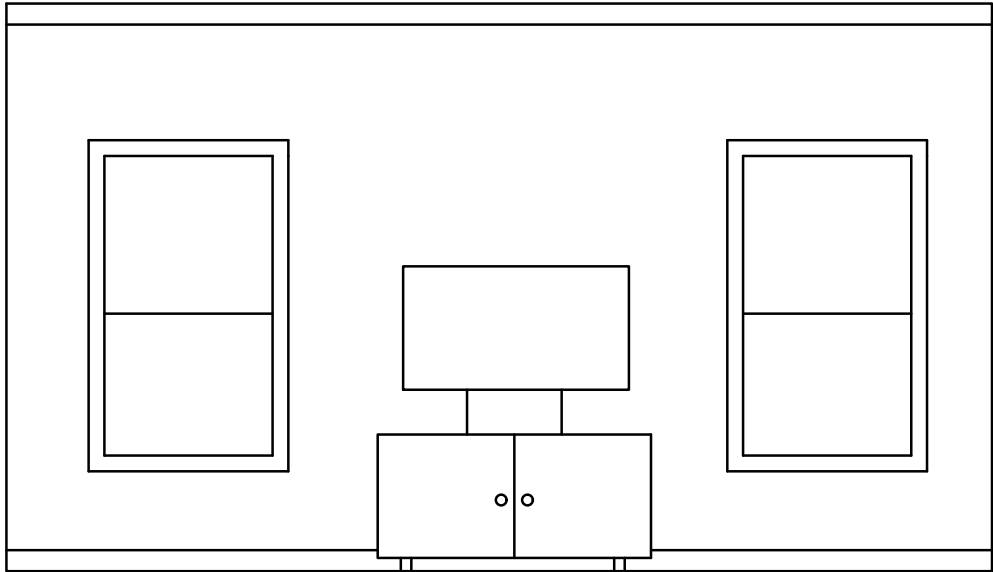


4 Kitchen S

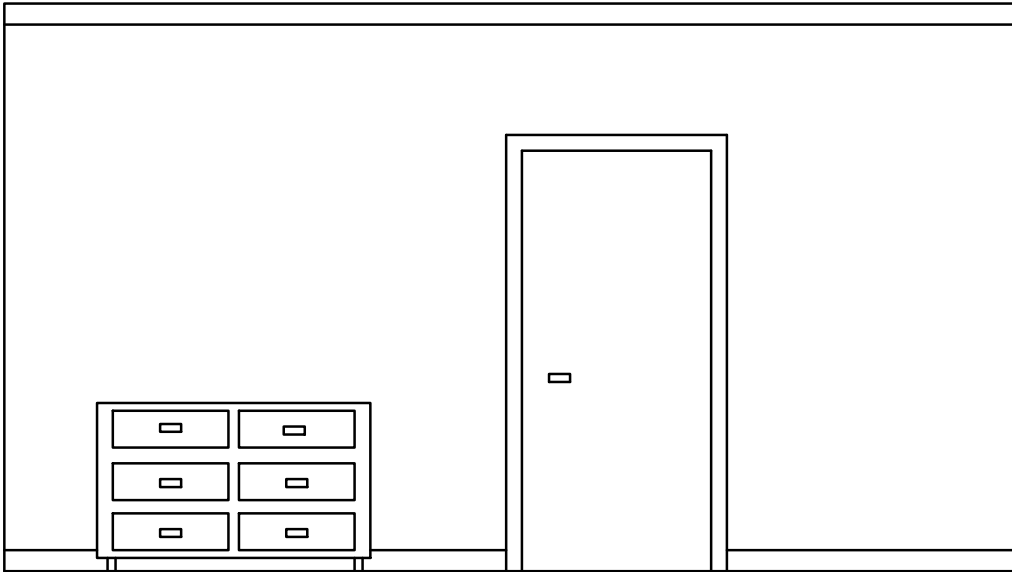


Elevations

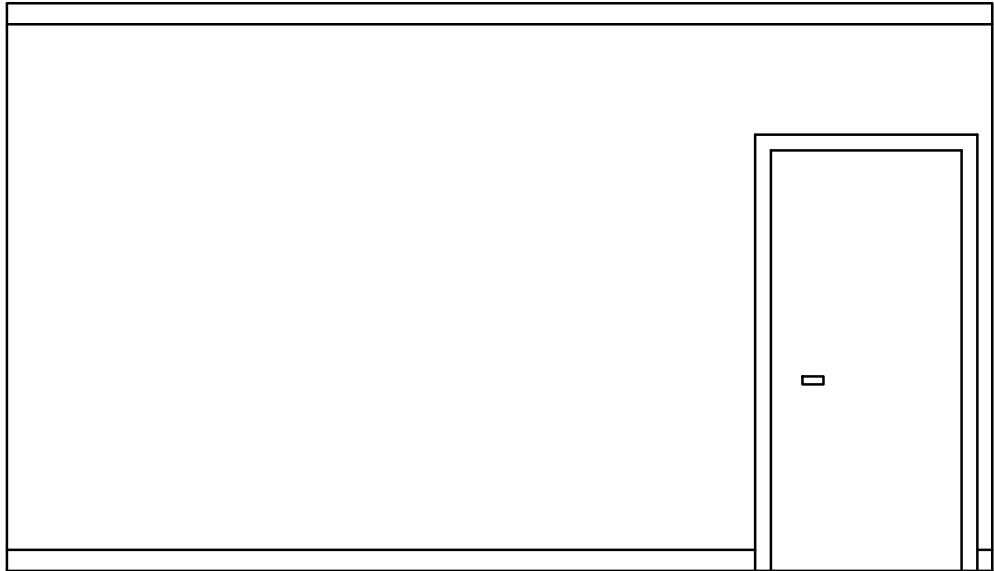
Scale 1/4"=1'0"



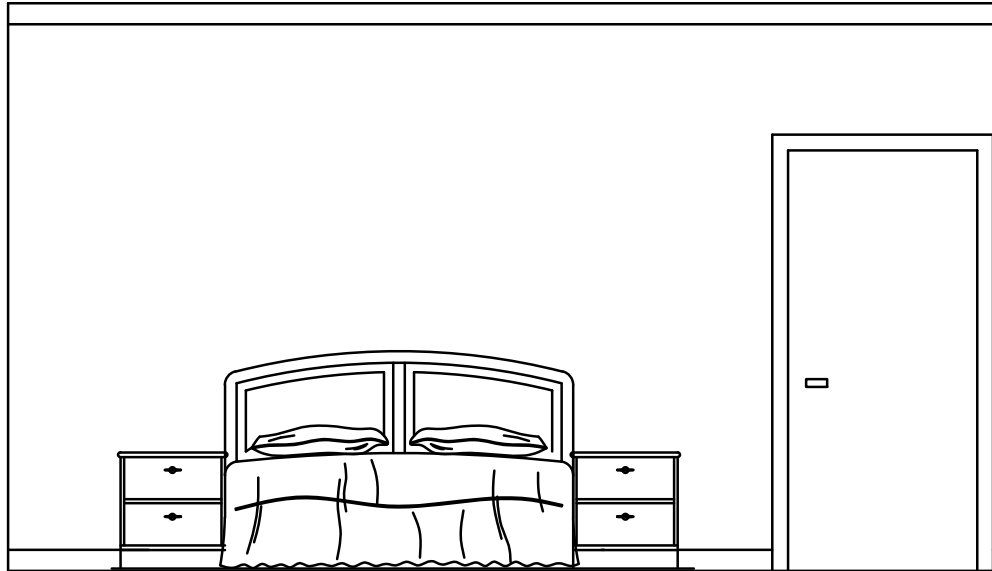
1 Master Bedroom W



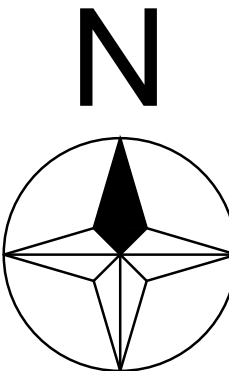
2 Master Bedroom N



3 Master Bedroom S

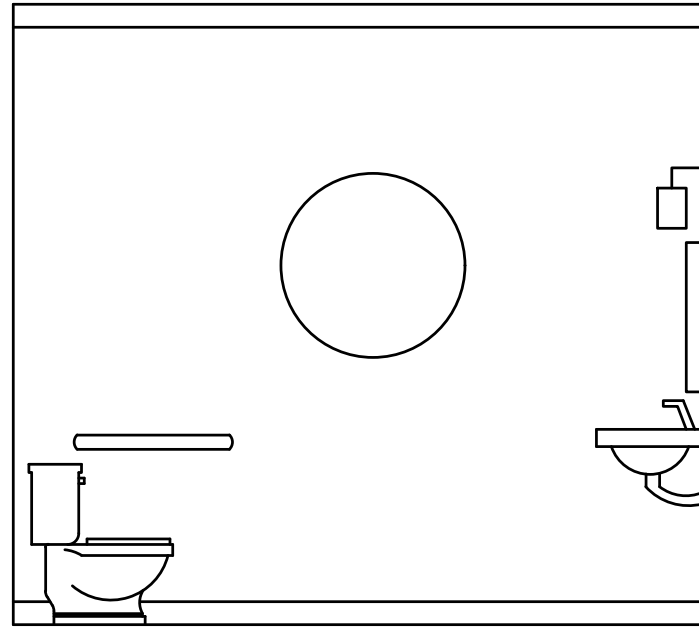


4 Master Bedroom E

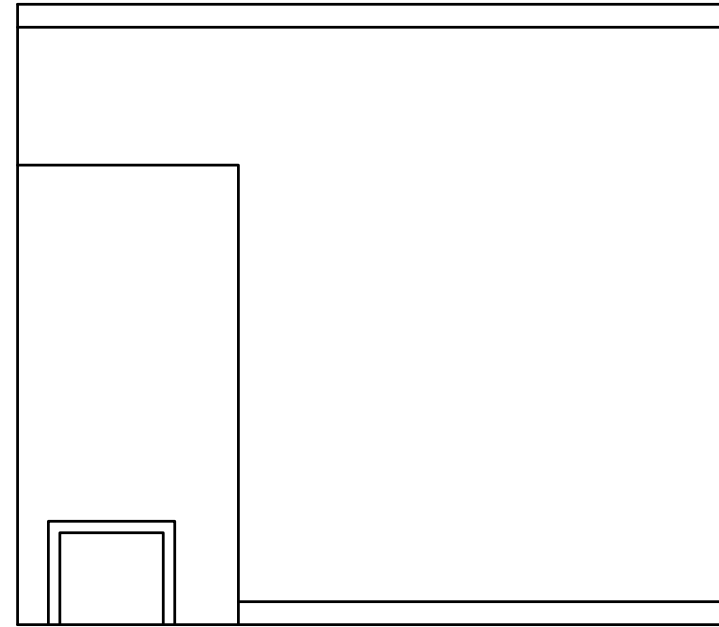


Elevations

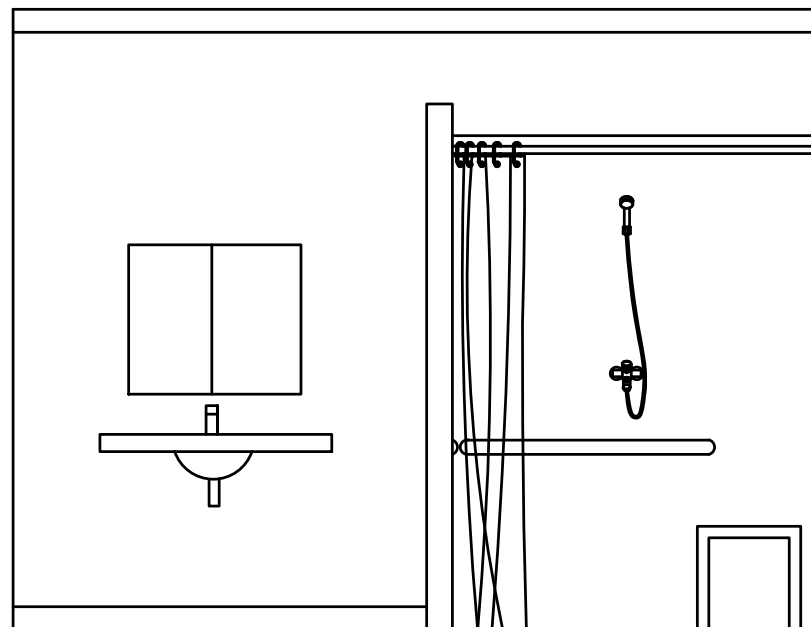
Scale 1/4"=1'0"



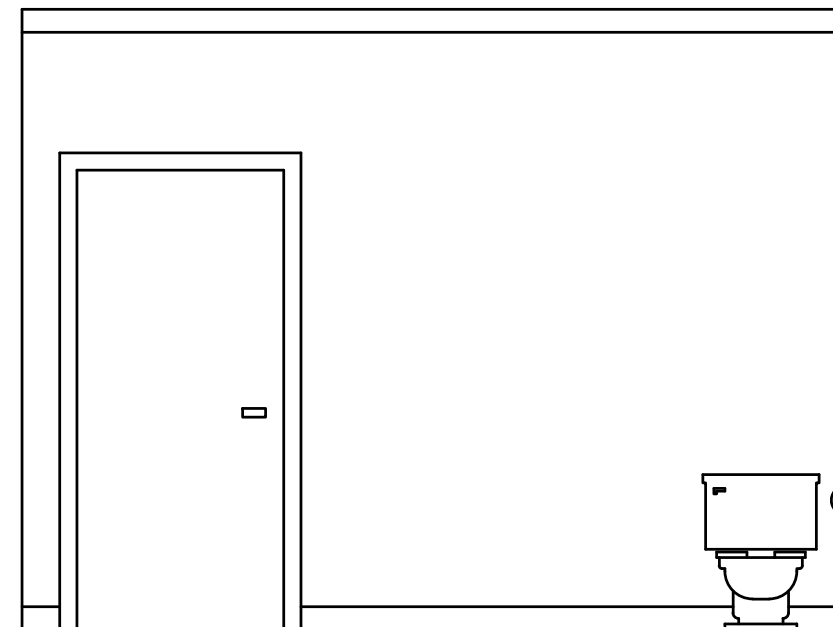
1 Master Bathroom W



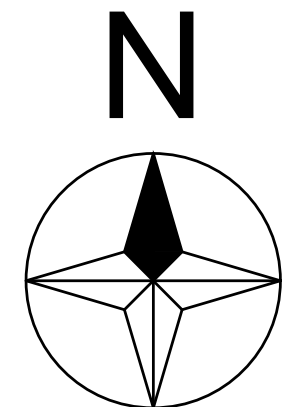
2 Master Bathroom E



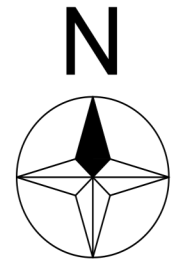
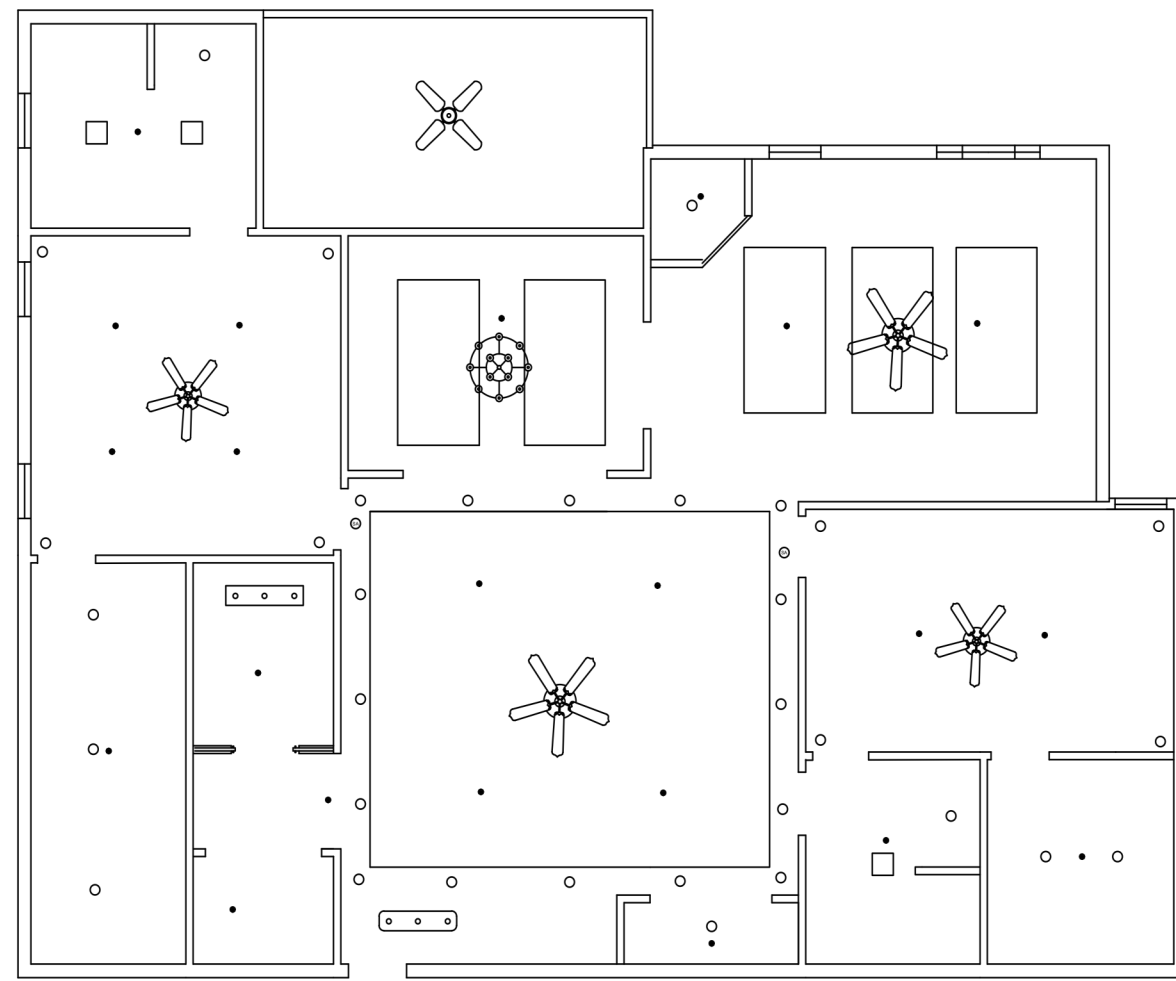
3 Master Bathroom N



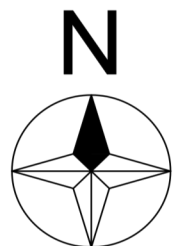
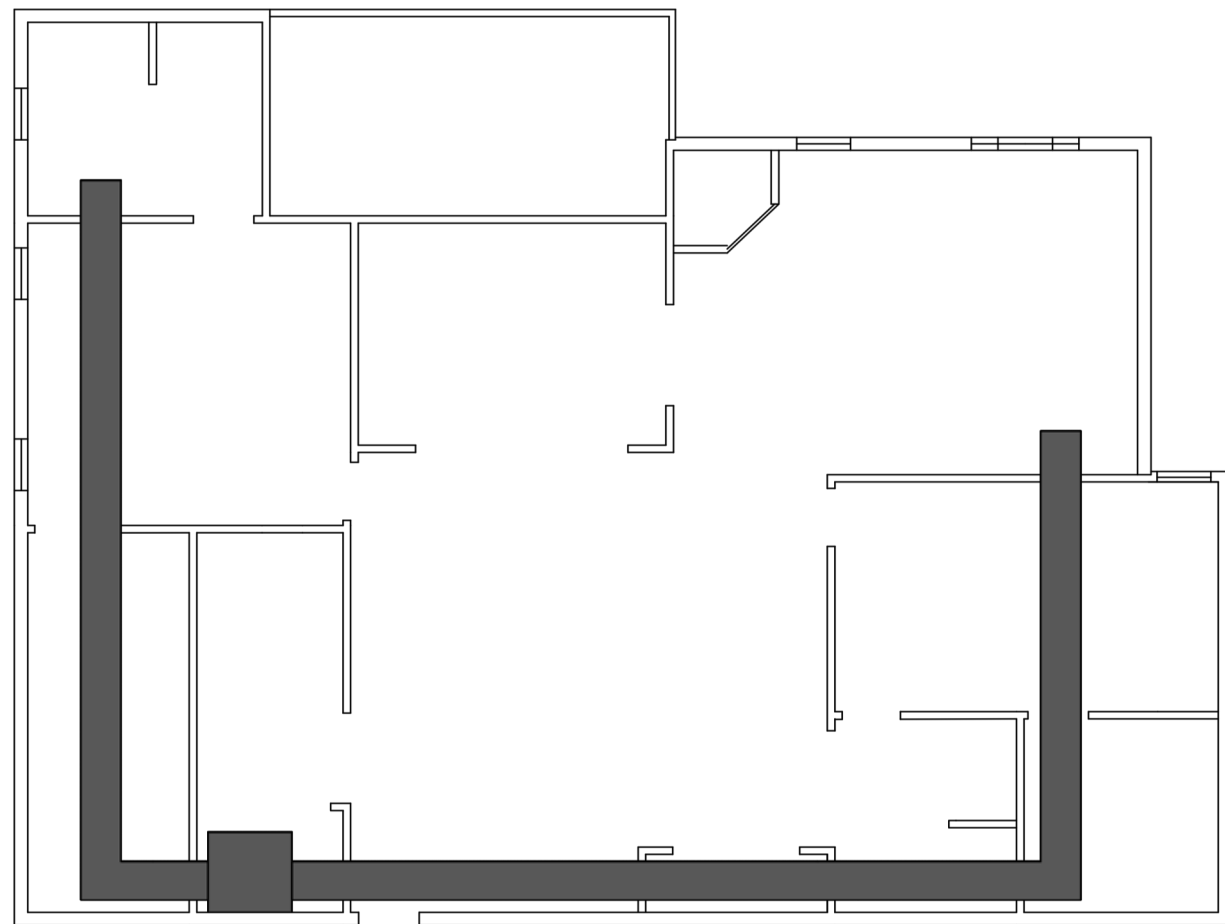
1 Master Bathroom S



REFLECTED CEILING
PLAN
1/8"=1'0



DUCT WORK
PLAN
1/8"=1'0





EXTERIOR



Kitchen

Dining Room



Living Room



Master Bedroom

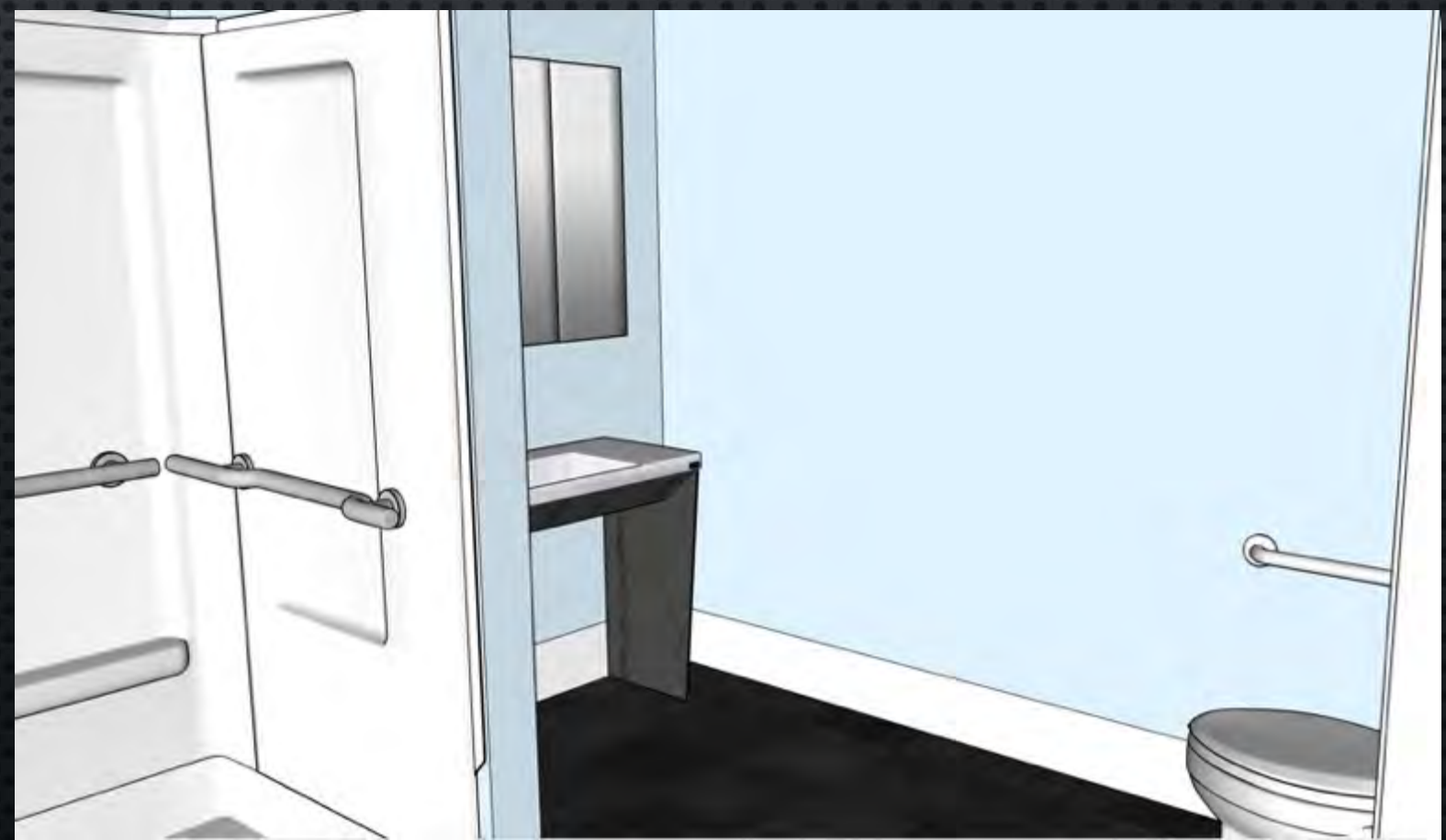


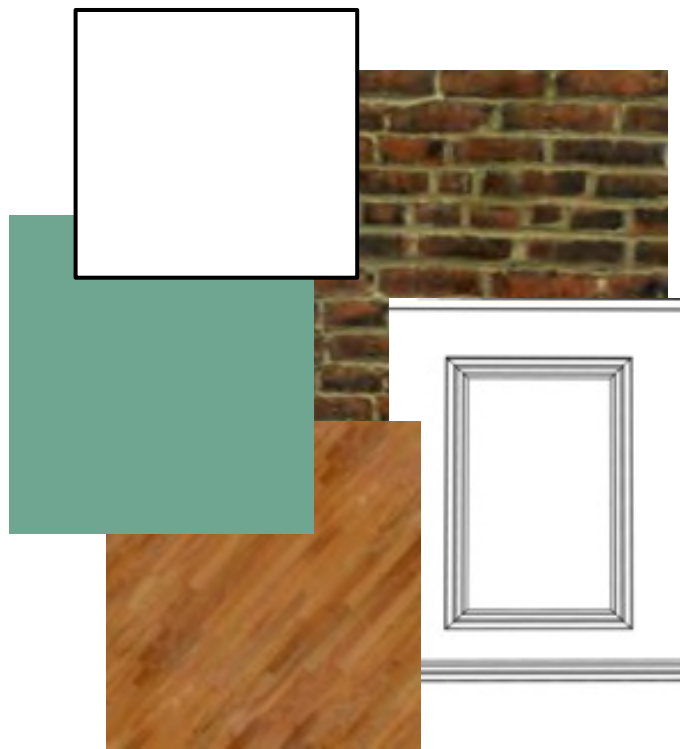
Guest Bedroom

Master Bathroom

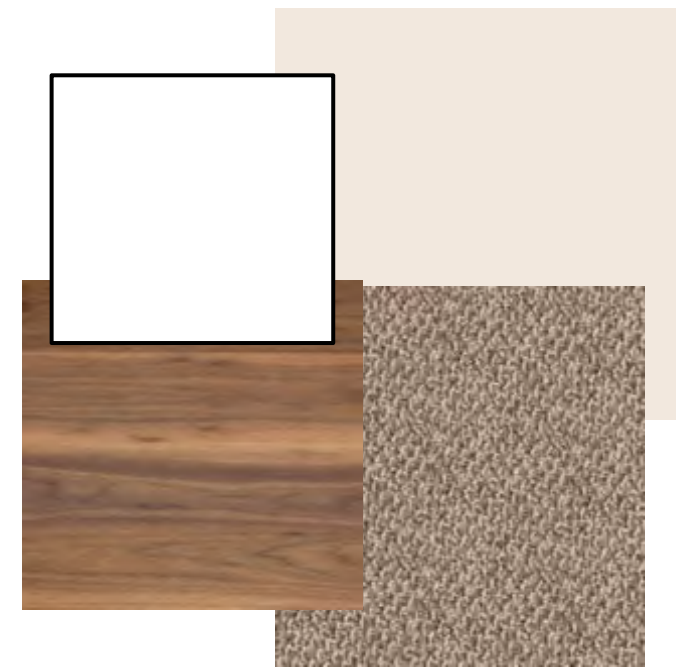


Guest Bathroom





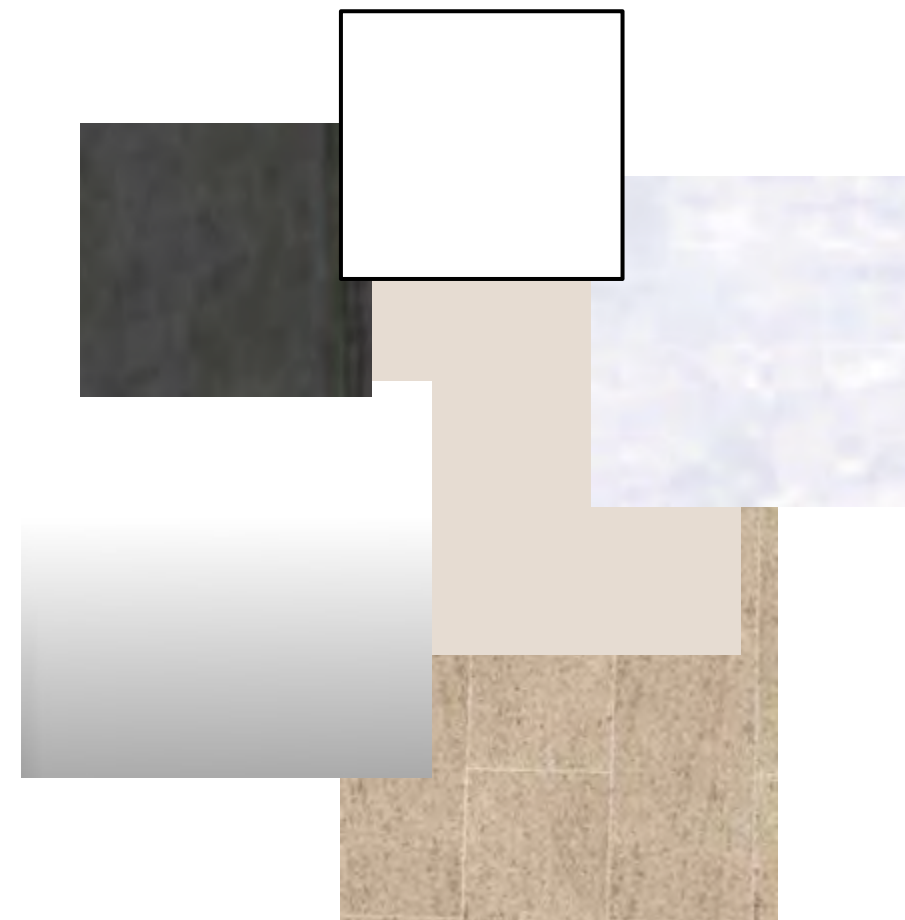
Living Room



Master Bedroom



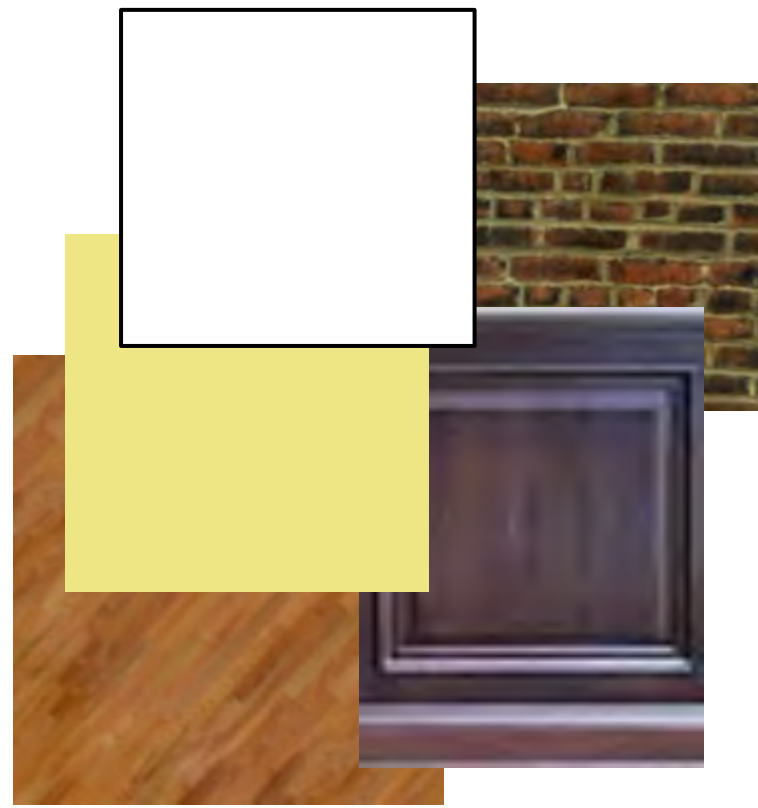
Kitchen



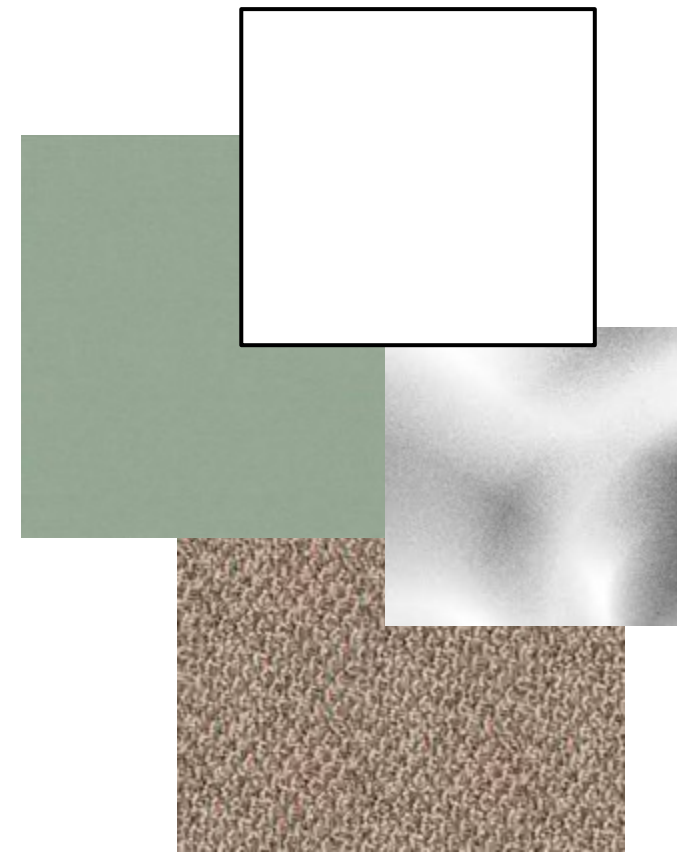
Master Bathroom

Finishes Option 1

Finishes Option 2



Living Room



Master Bedroom



Kitchen



Master Bathroom