




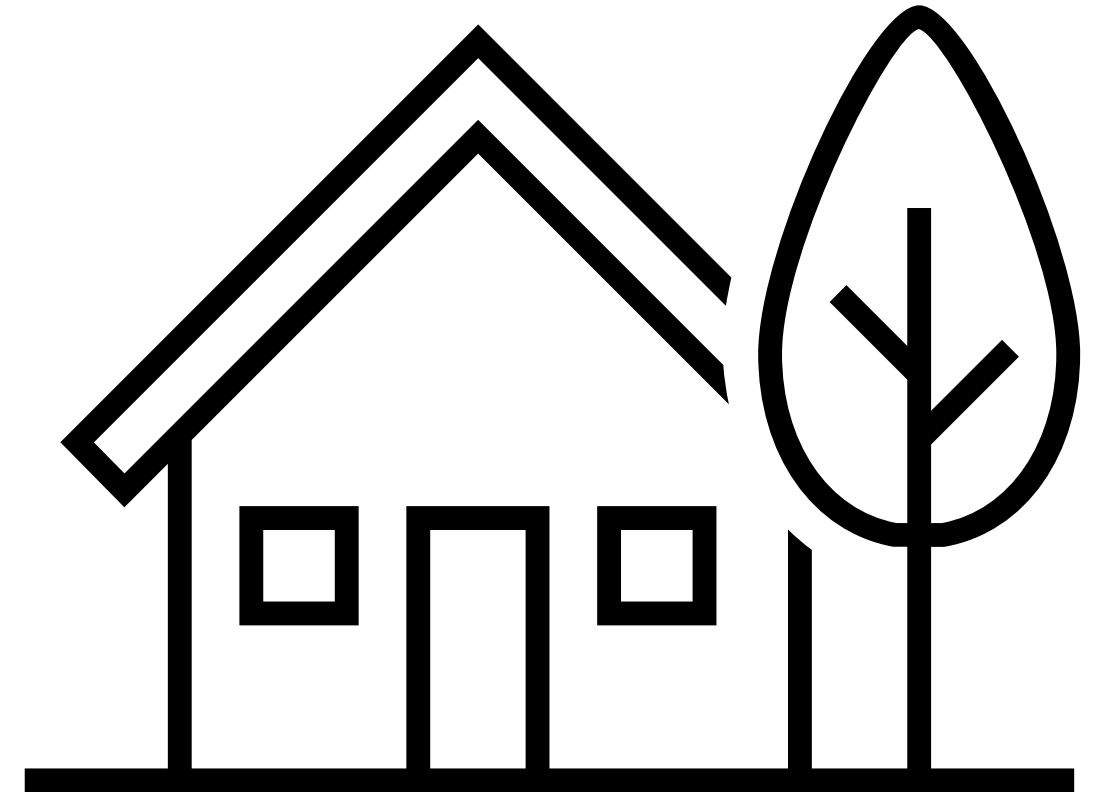
Portfolio 3

Rebecca Hodges
Senior Living
IDSN 3202
East Carolina
University



The Village

- The village apartment complex is a new retirement community in Greenville, NC. The apartment complex is a community that offers a range of apartments that can be slightly altered for each resident. Each building has two levels with four apartments on each level.



Pat and Fran

- Originally from Pittsburg
- Previously professors
- Love the Biedermeier and Bauhaus Styles
- 5 years from retirement
- Fran is deaf
- 2 children
 - Dale in Pittsburg
 - Dana in NC w/ amputated leg (visits a lot)
- Want updates furniture and furnishings
 - Want walls bare to add their own art overtime



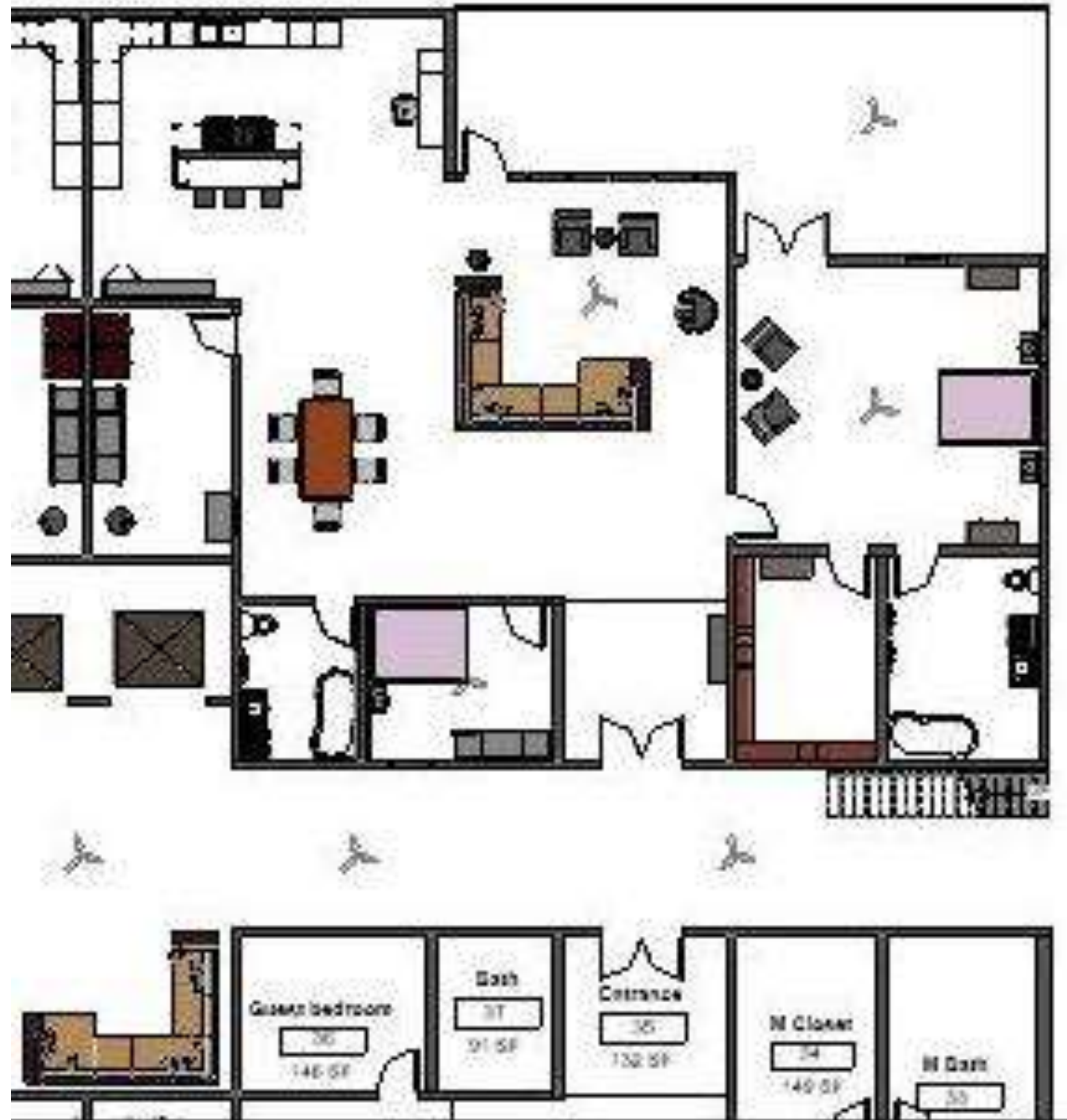
Color Rationale

- New Cozy
- Colors that provide comfort but also can age with shifting styles.
- Clients wanted to liven up the space with their own art overtime.
- Modern and timeless feel.



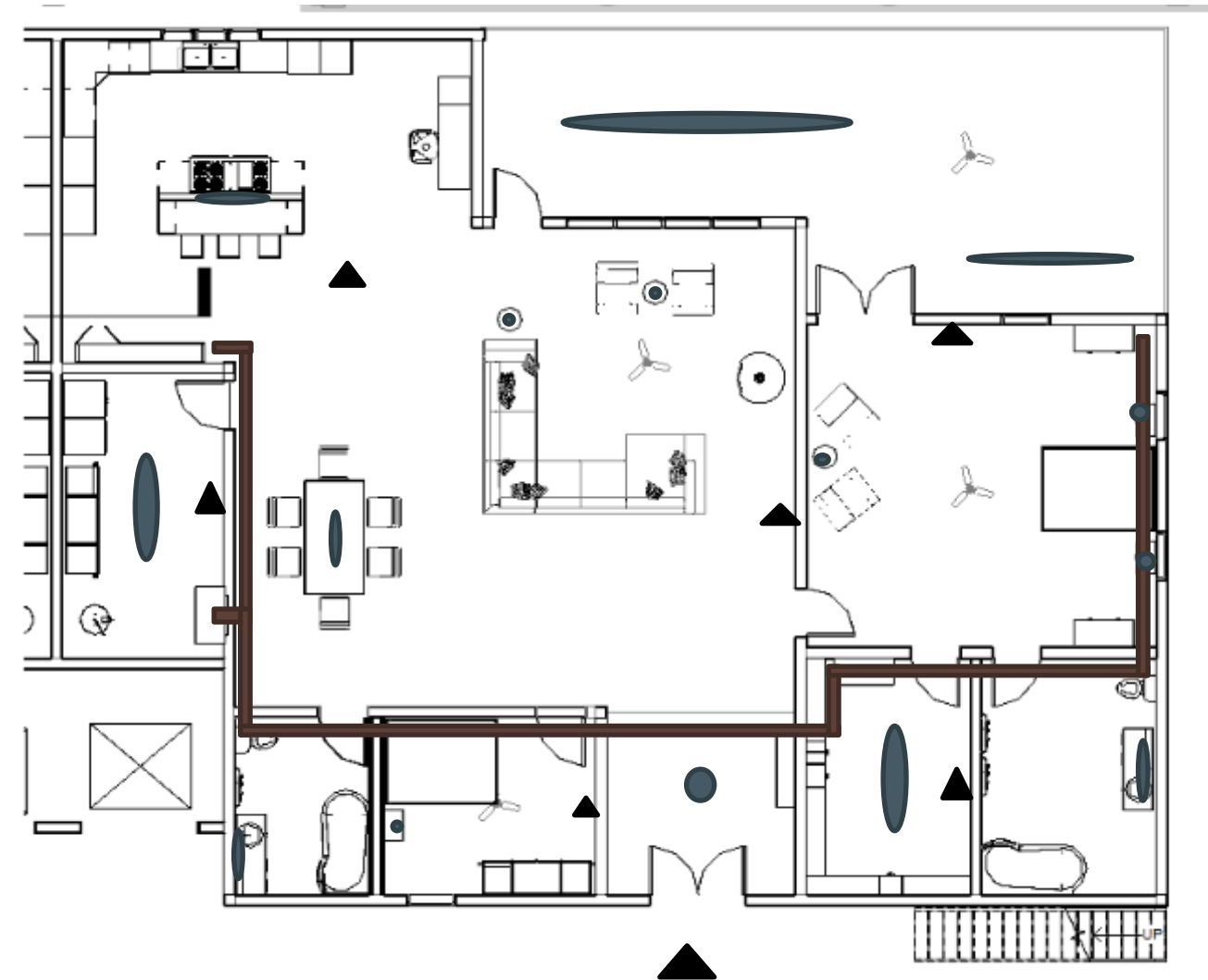
The Apartment Info

- Each apartment on the interior is 2,736 square ft and has a balcony of 588 square ft.
- The apartment includes a master suite, guest bedroom and bath, laundry/utility room, with an open concept floorplan.
- Less hallways allows for easy sightlines for sign language as well as easy movement throughout the apartment



Reflected Ceiling Plan

Brown= HVAC
Blue= Lights
Black=Sprinklers



Renderings

Master bedroom



Living room

Renderings

Guest Bathroom



Kitchen

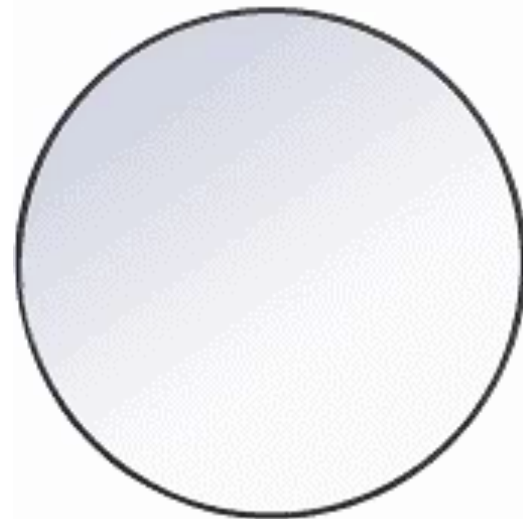
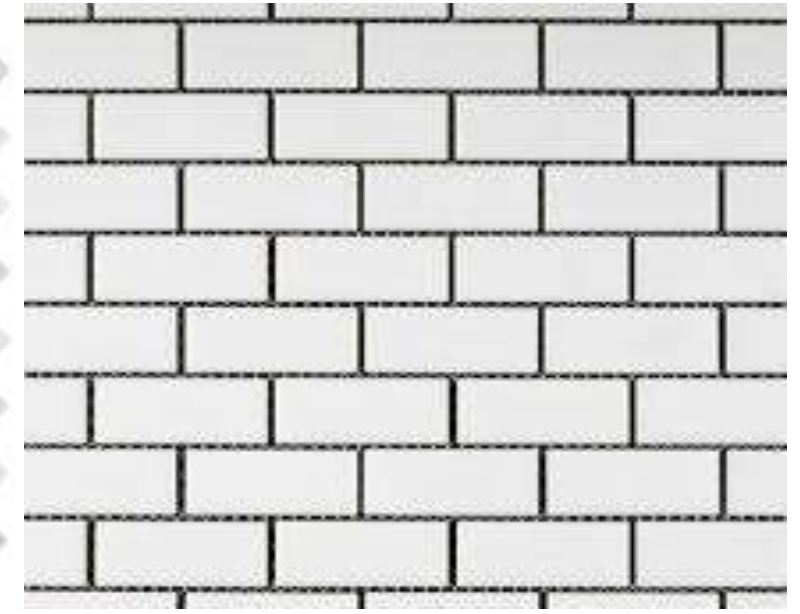
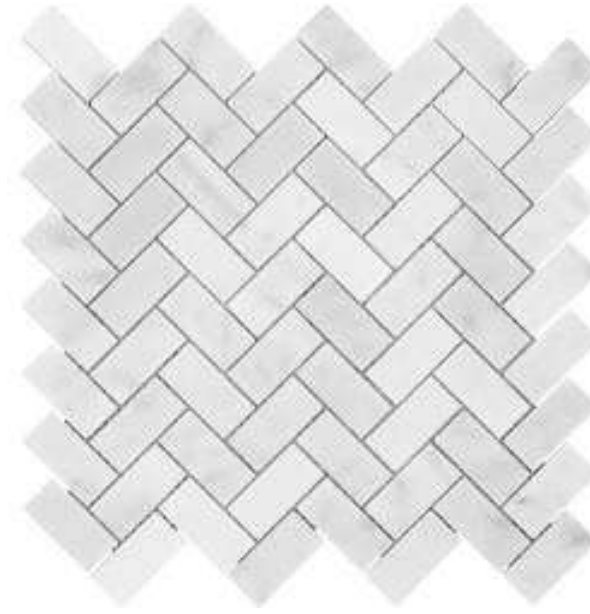
Finishes Option 1 Kitchen/living



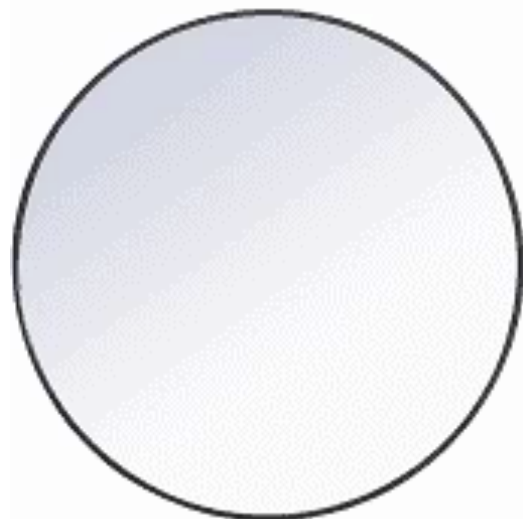
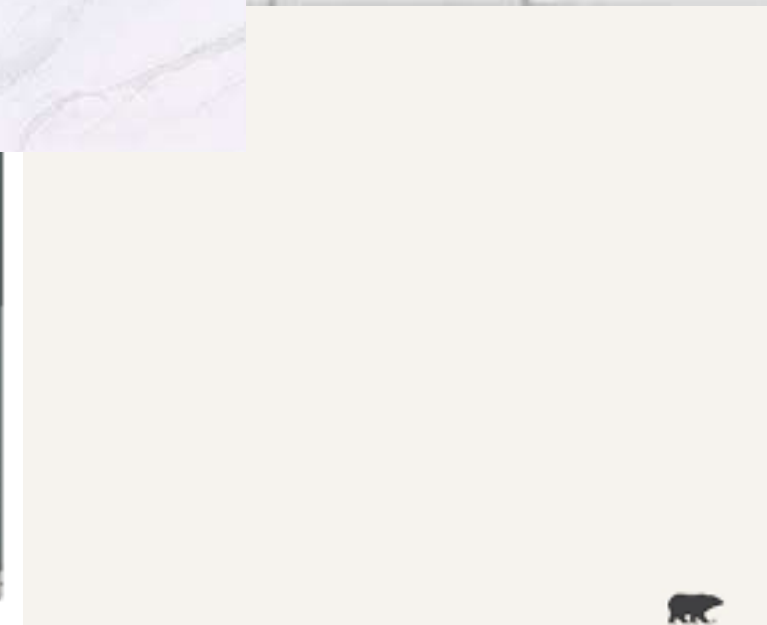
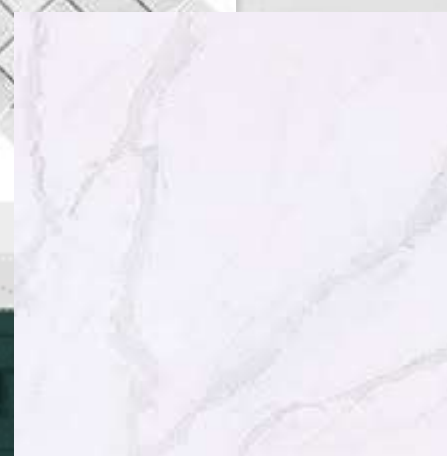
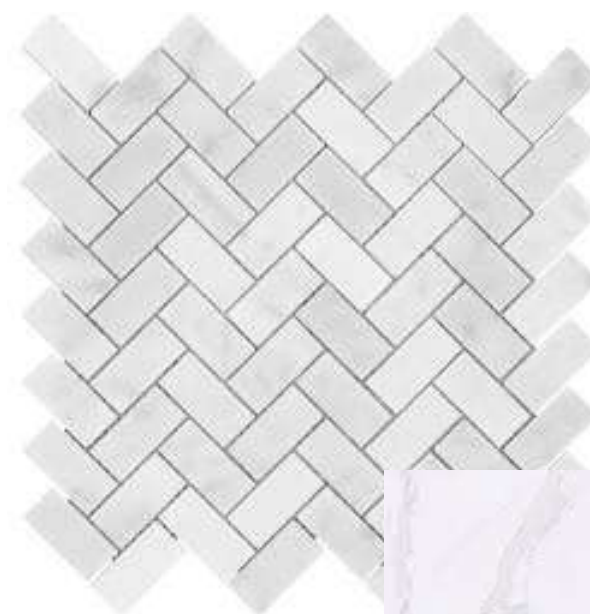
Finishes Option 2 Kitchen/living



Finishes Option 1 Bathrooms



Finishes Option 1 Bathrooms



Finishes Options 1 Master/Guestroom



Finishes Options 1 Master/Guestroom



Walkthrough

- https://youtu.be/_20V4XhmGs8 Non-Rendered Video
- <https://youtu.be/vrpgeqmjVAc> Rendered Video

