



IDSN 3202

SENIOR LIVING CONDO

Myah Kendrick

SPRING 2021

CLIENT INFORMATION



- Pat and Fran- college professors
 - Pat- decorative arts (Bauhaus/Biedermeier)
 - Fran- molecular physics
 - 2 Daughters (Dale and Dana)
- Interested due to:
 - Climate
 - Low cost
- Require ADA compliance
 - Hearing loss
 - Daughter (Dana) is double leg amputee
- Purchase new furnishings

SPECIFIED DISABILITY RESEARCH



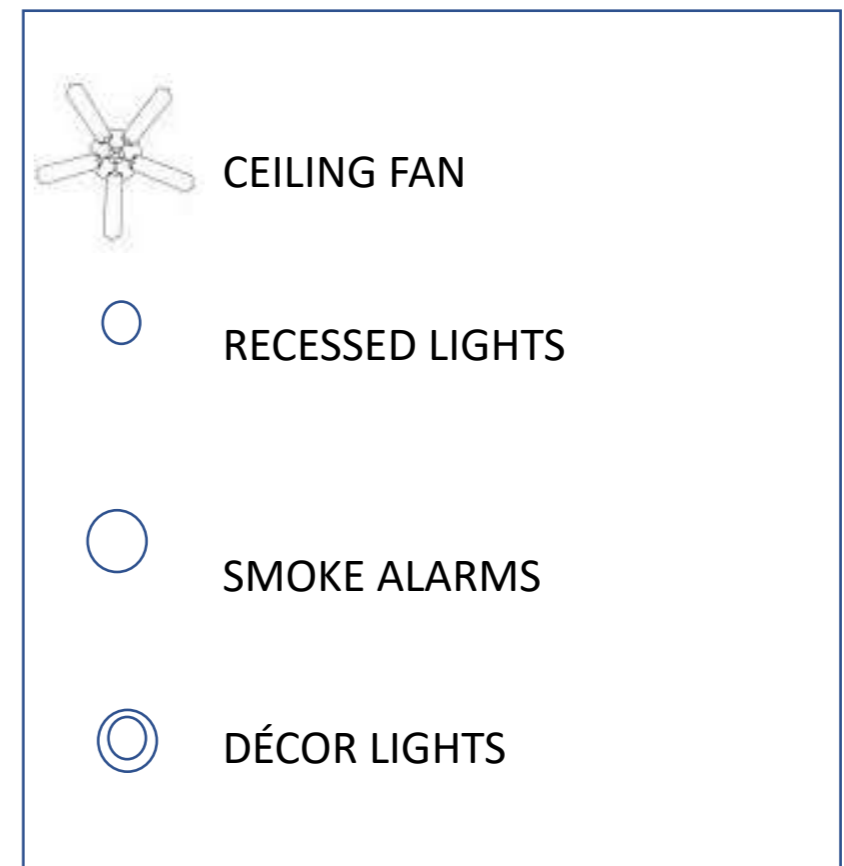
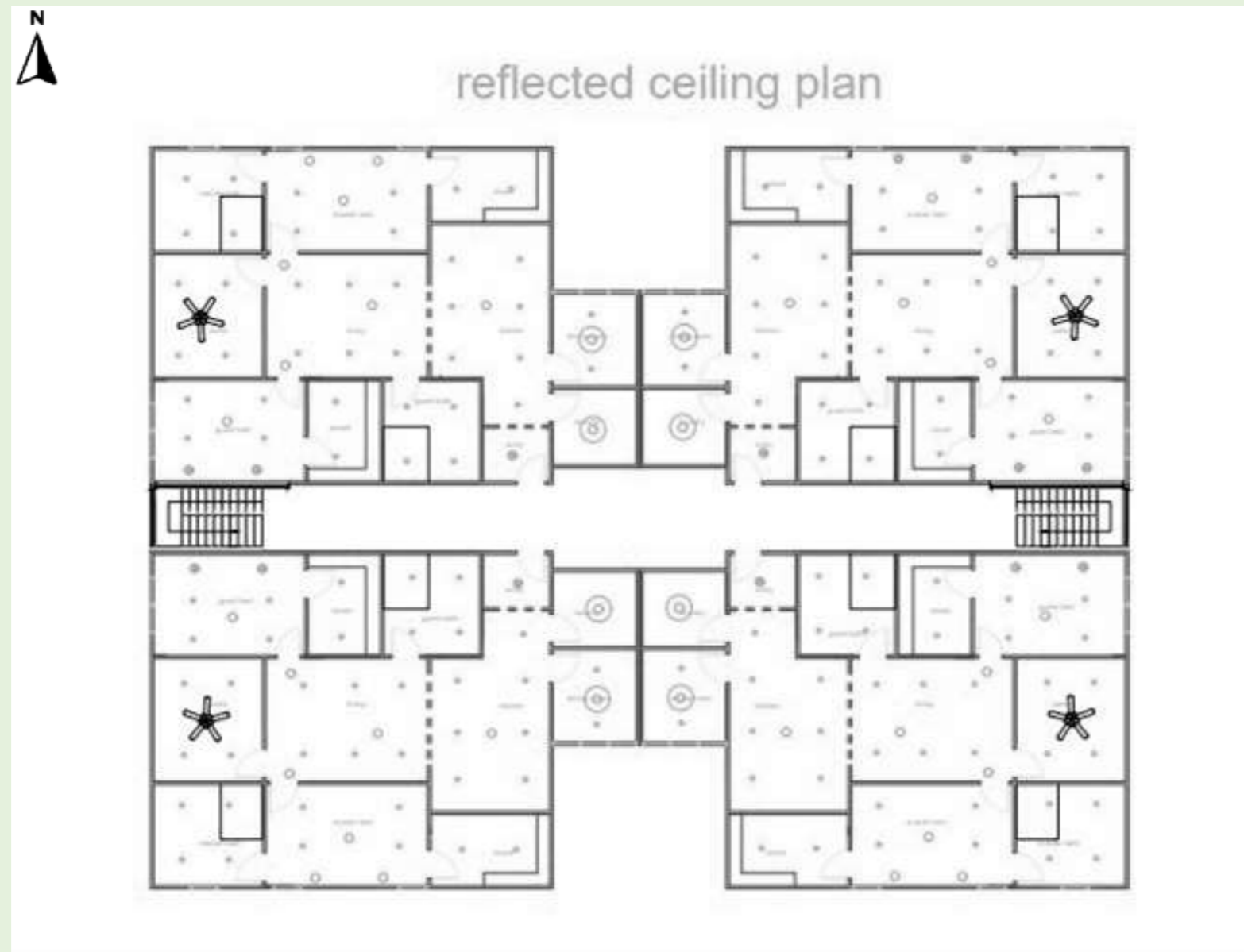
- **Hard of Hearing Challenges/Solutions**
 - Contrasting colors skin tone
 - Avoid glares
 - Adequate lighting
 - Acoustics to rid annoying sounds
- **Double Amputee Challenges/Solutions**
 - Motion-sensor lights, faucets, and dispensers
 - Non-slip mats
 - Night lights

FURNITURE PLAN



NTS

REFLECTED CEILING PLAN



RENDERED PERSPECTIVES



INSPIRATION

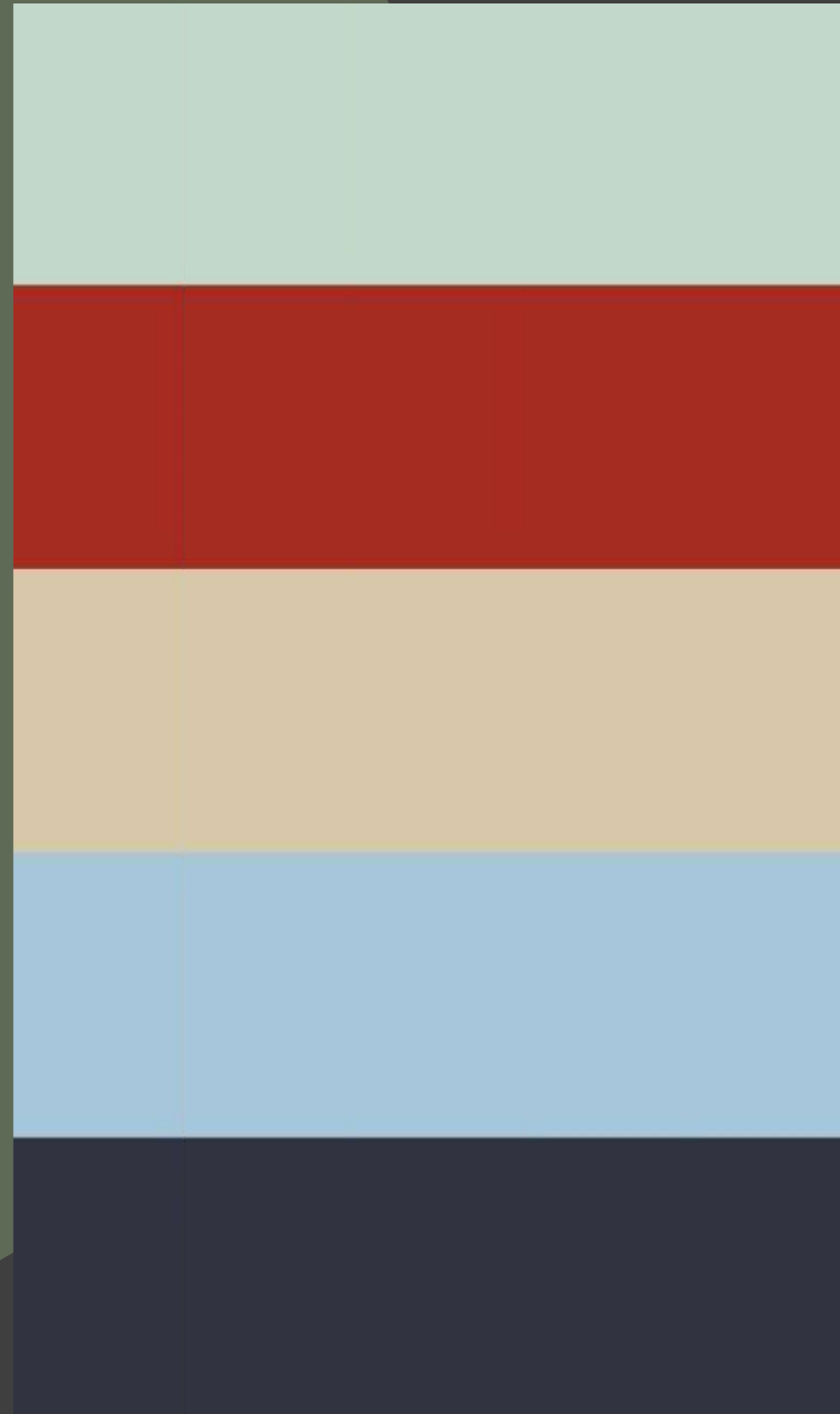




INSPIRATION

- **Josef and Anni Albers**
 - Professors at Black Mountain College
 - Josef- teacher, writer, painter, color theorist
 - Anni- textile designer, writer, weaver, teacher, printmaker
- Pioneers of the 20th century modernism
 - Inspired thought of fabric as an art form
 - “Homages to the Square”

COLOR RATIONALE



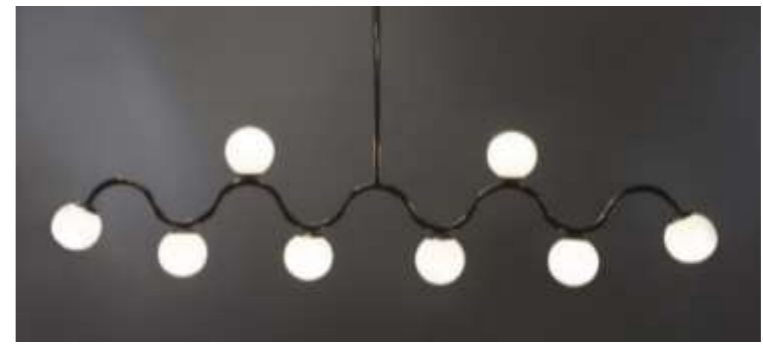
- Bauhaus design generally uses primary colors
- Plays with juxtaposition of those colors
- Addition of green and beige tones to tie into the biophilic design/ earth tones



FINISHES



FURNITURE



WALKTHROUGH

