



RESIDENTIAL CONDO

Nakischa Cambridge

TENANT

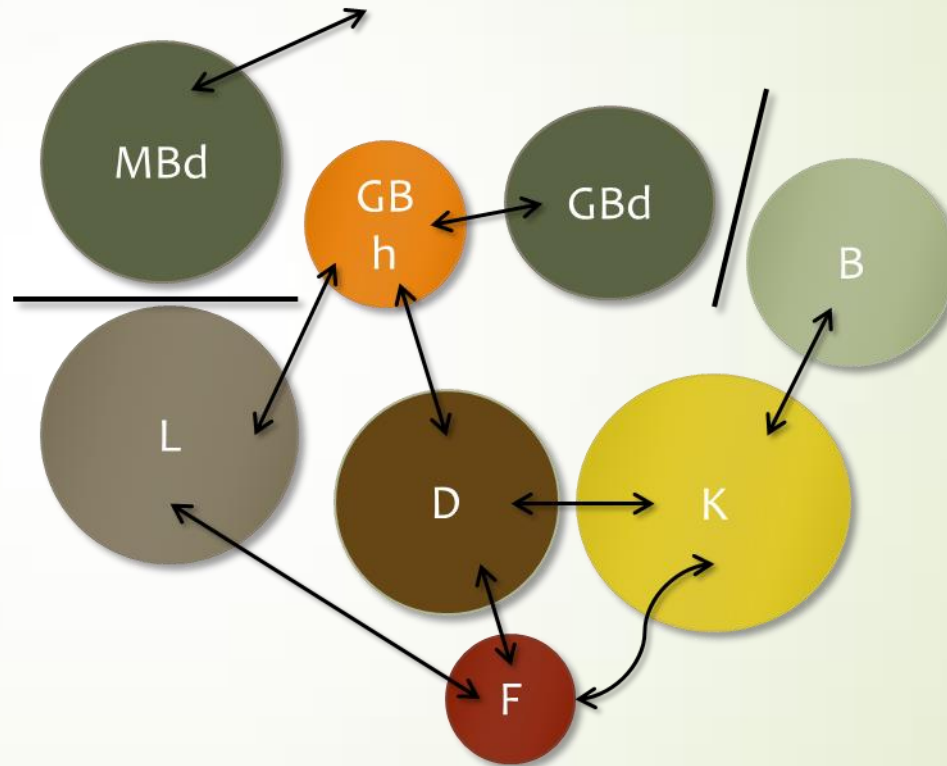
- Over-55 residential condominium
- Must include 2 bedrooms and 2 full baths
- Located in Greenville, NC
- 2,000-3,500 square feet unit
- Target active, affluent retirees



BUBBLE PLAN OPTION 1

- F- Foyer
- MBd- Master Bed
- MBh- Master Bath
- GBd- Guest Bed
- GBh- Guest Bath
- K- Kitchen
- L- Living
- D- Dining
- B- Bonus

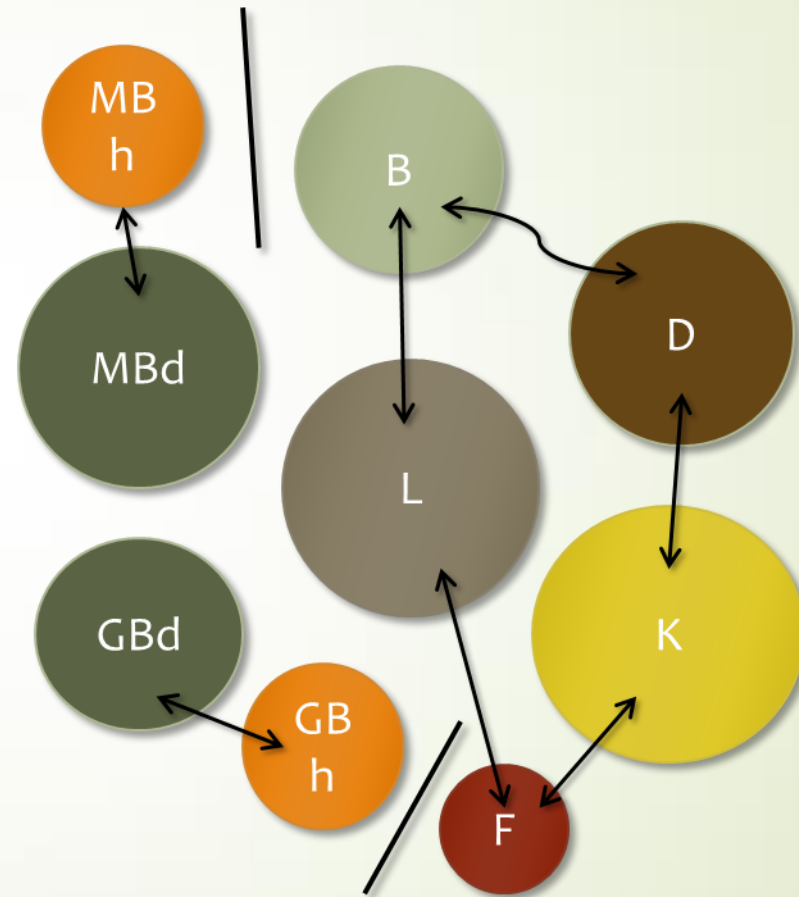
- No connection —————
- Semi ↔
- Connection ↔



BUBBLE PLAN OPTION 2

- F- Foyer
- MBd- Master Bed
- MBh- Master Bath
- GBd- Guest Bed
- GBh- Guest Bath
- K- Kitchen
- L- Living
- D- Dining
- B- Bonus

- No connection —————
- Semi ↔
- Connection ↔





Dimensions

- ▶ Foyer- 83; 8.8x9.4
- ▶ Living- 300.6; 18.4x16.4
- ▶ Kitchen- 250.3; 15.8x15.8
- ▶ Dining- 209.9; 12.7x16.4
- ▶ Utility- 106; 10x10.6
- ▶ Master bed- 393; 23x17
- ▶ Master bath- 247; 13x19
- ▶ Guest bed- 169; 12.4x13.6
- ▶ Guest bath- 101; 12x8.4
- ▶ Bonus- 371; 16x23
- ▶ Balcony- 80; 6x13.4
- ▶ Total Sqft- 2466



Inspiration



Historic Precedents

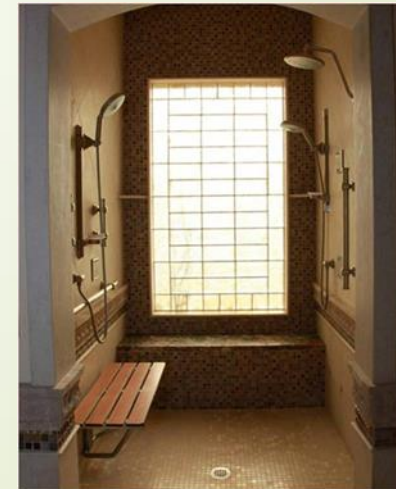
➤ Japanese

- Elements of Wood and Bamboo
- Sliding Doors or Screens
- Elements of Nature
- Entryway- Area that greets visitors and a place where shoes are taken off
- Furniture- simplicity, low-to-the-ground
- Clean and Minimalist
- Open Space and Natural Lighting
- Meditating Space



Universal Design Strategies

- Using loop handles on the doors
- Rotating shelves/pull-out shelves
- Front mounted controls
- Side-by-side refrigerator
- Pull-down shelves
- Grab bars/handles
- Hand-held showerhead
- Lever handles for faucets
- Front-loading appliances
- Focused lighting

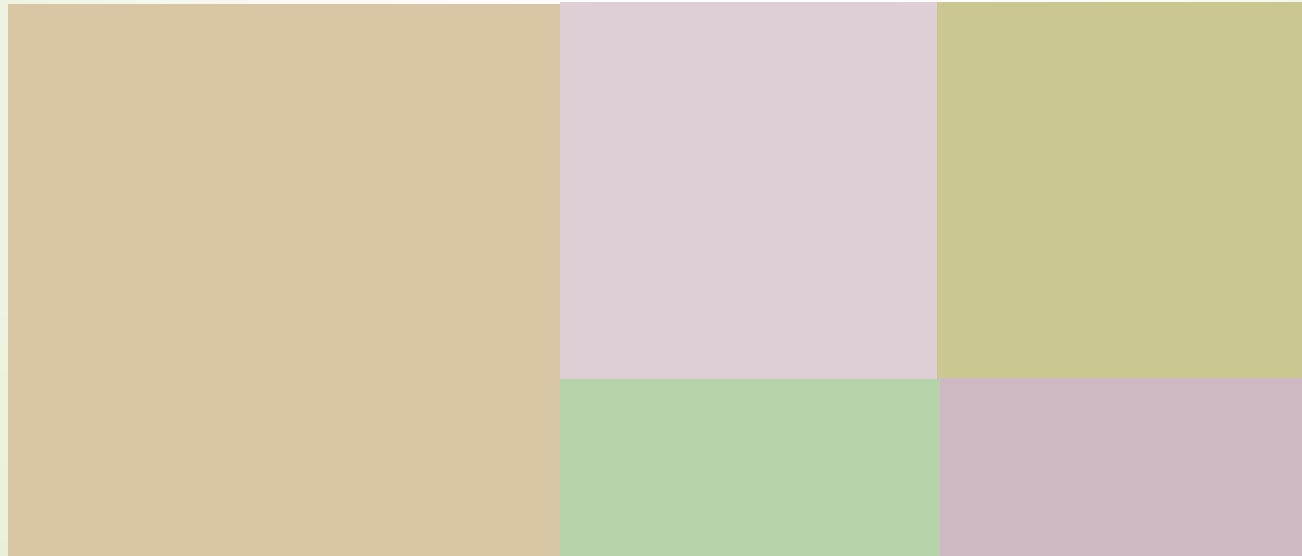


Human Behavior

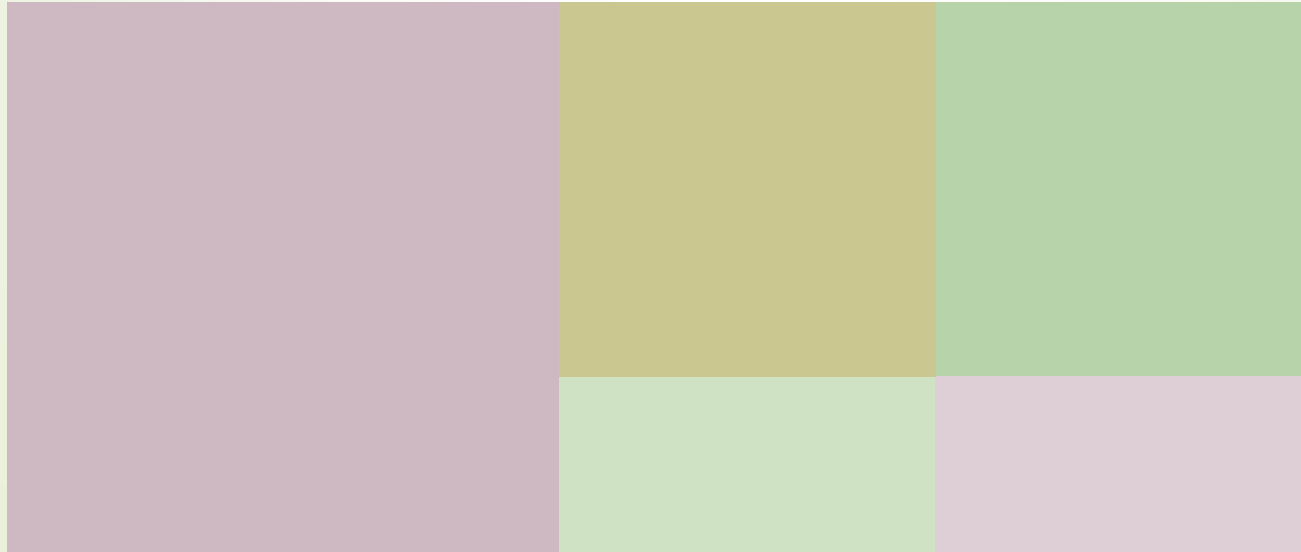
- no stairs
- Blocking in walls for grab bars if needed
- Open space for easy traffic in space
- Large windows to see the outdoors
- Slow living pace
- Social interactions
- Amenities on site



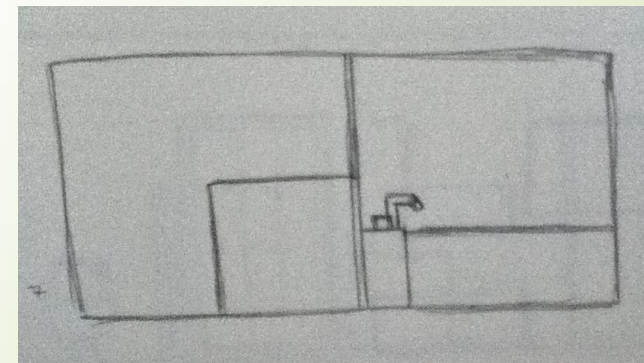
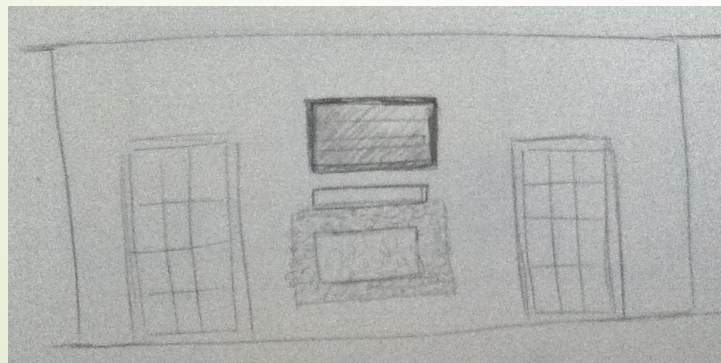
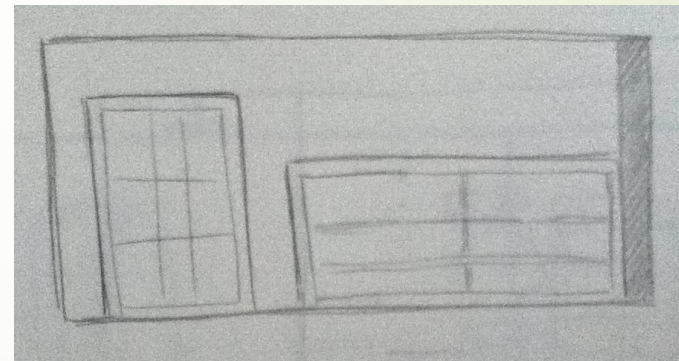
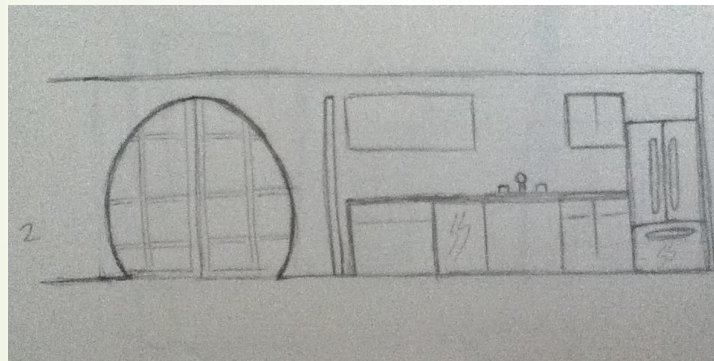
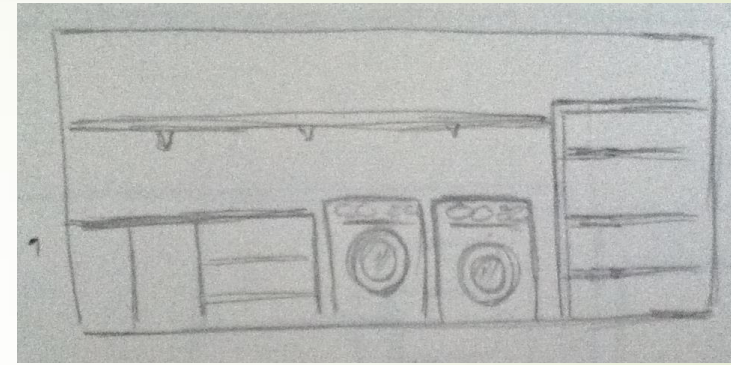
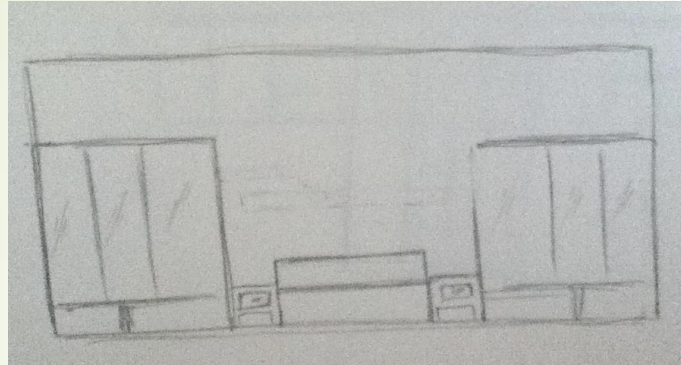
Color Scheme Option 1



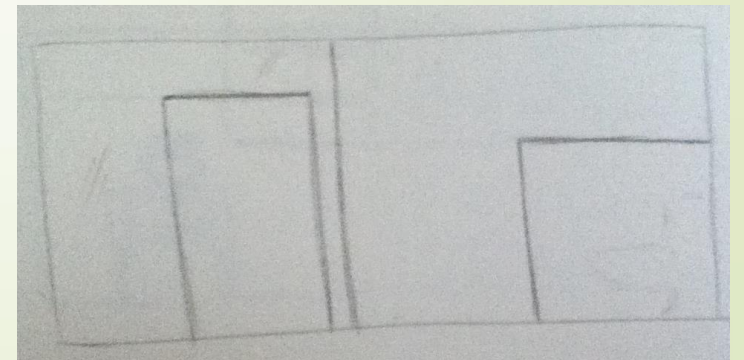
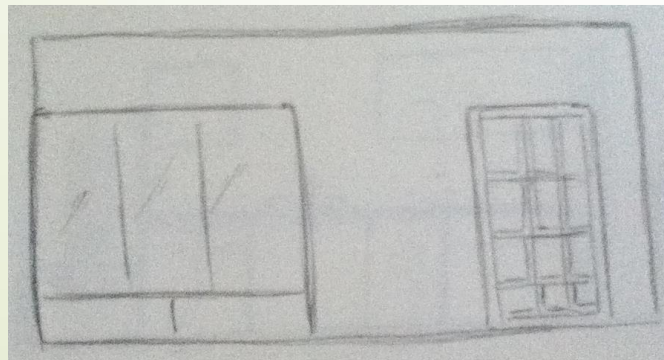
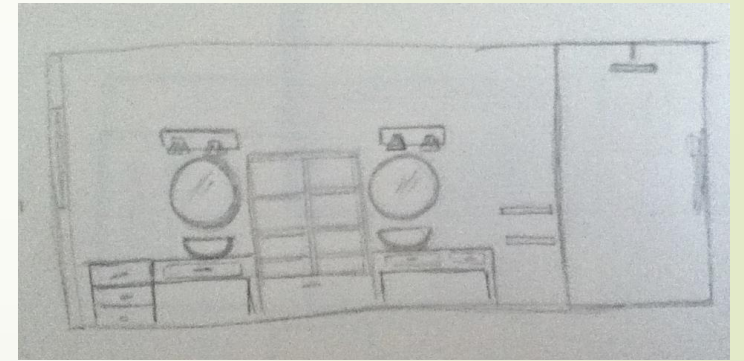
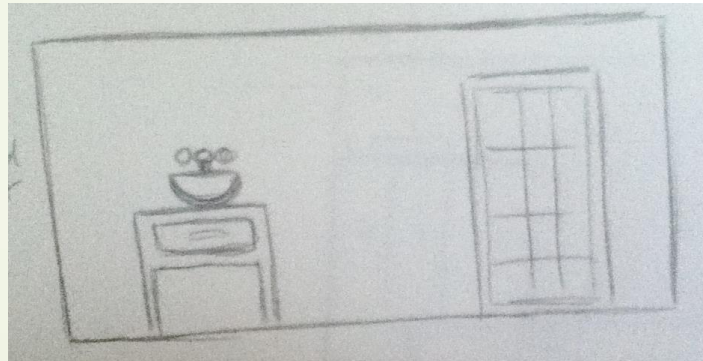
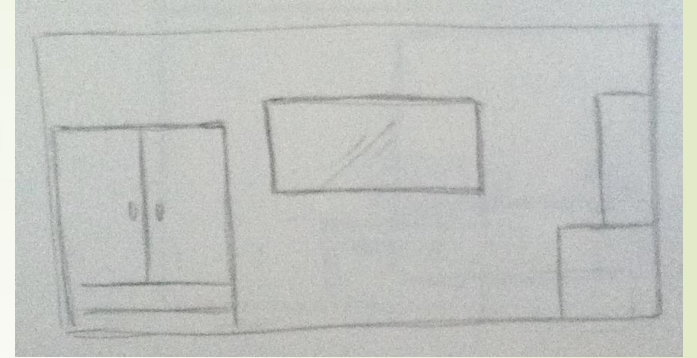
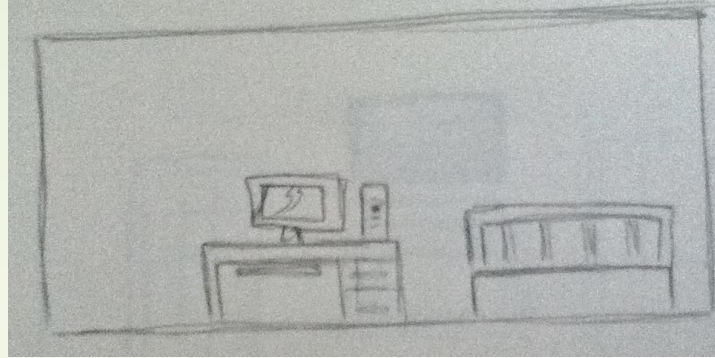
Color Scheme Option 2



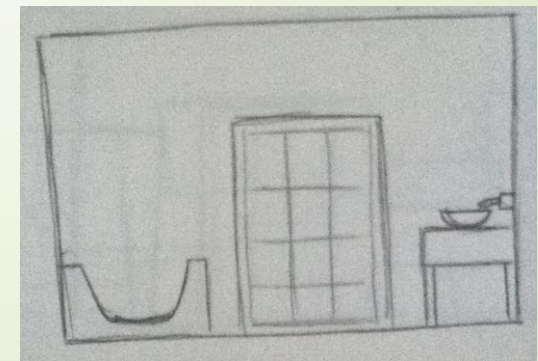
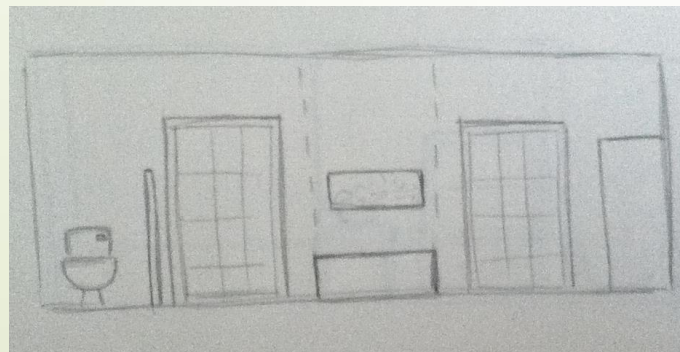
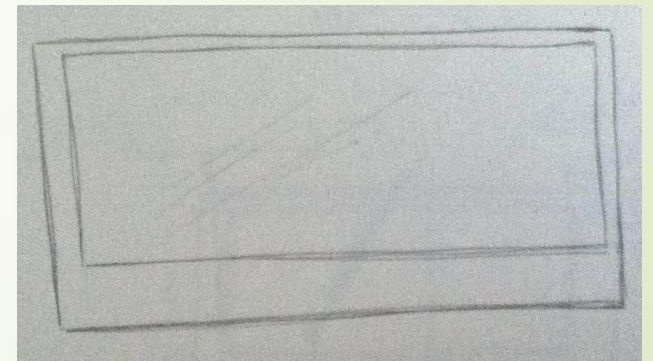
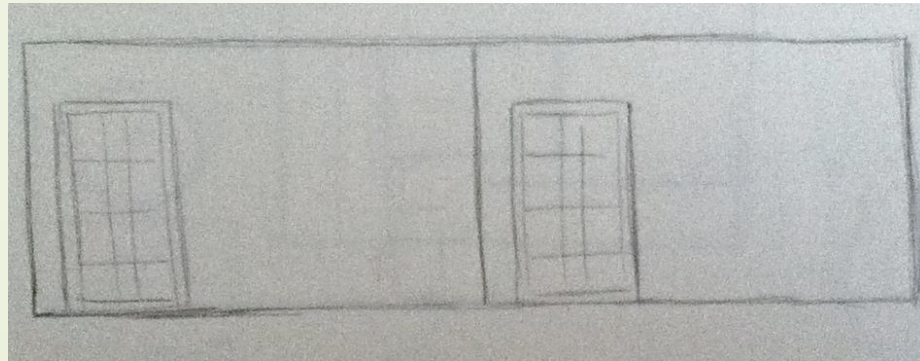
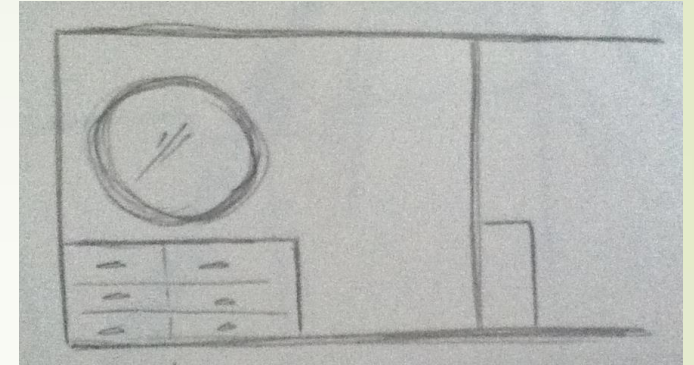
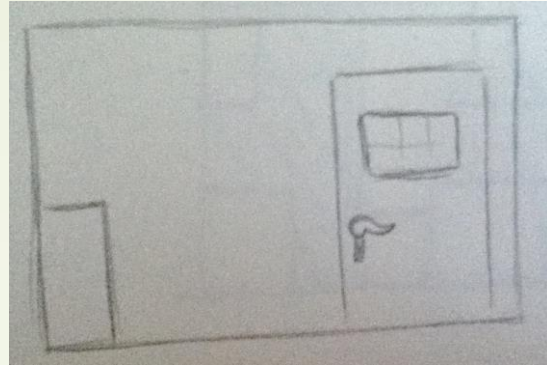
Elevation Sketches



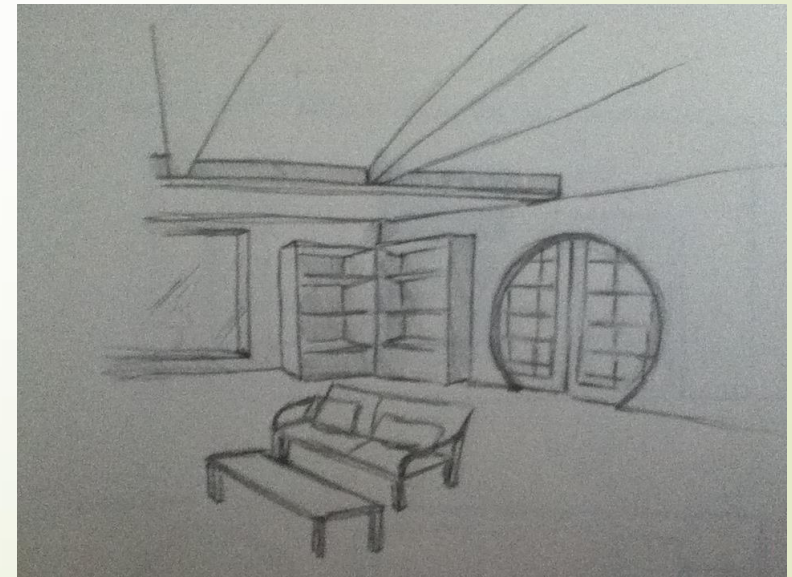
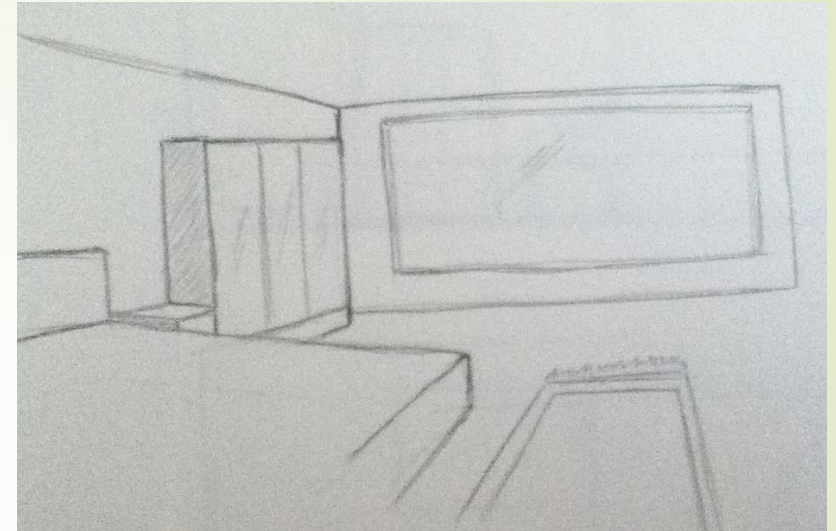
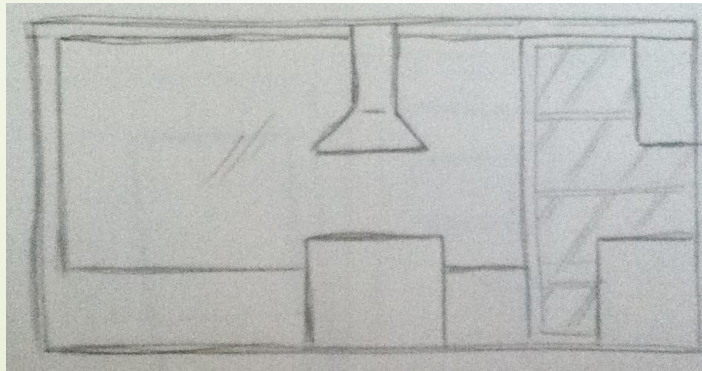
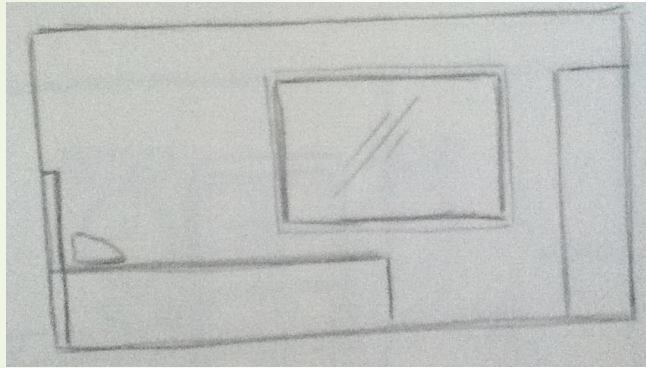
Elevation Sketches



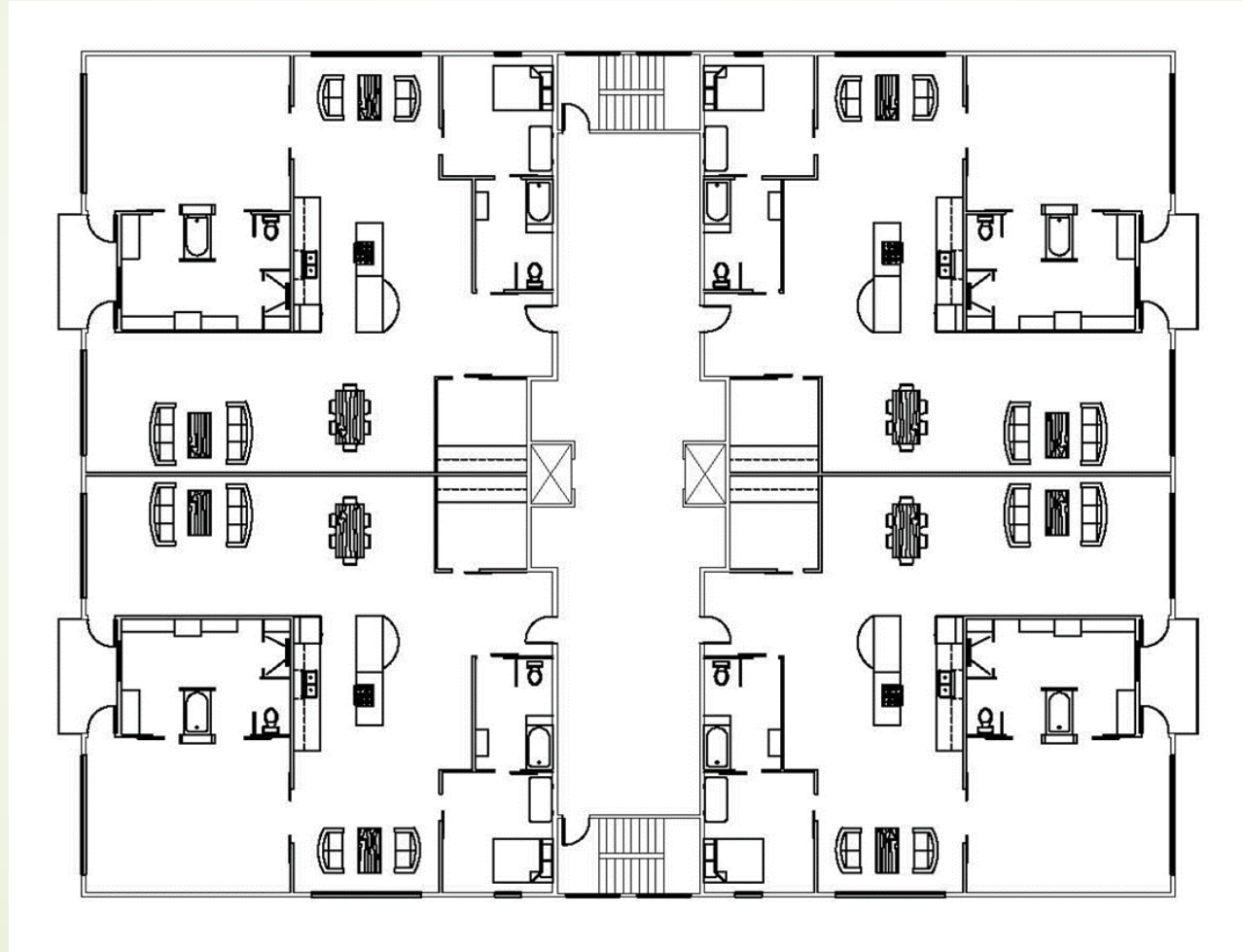
Elevation Sketches



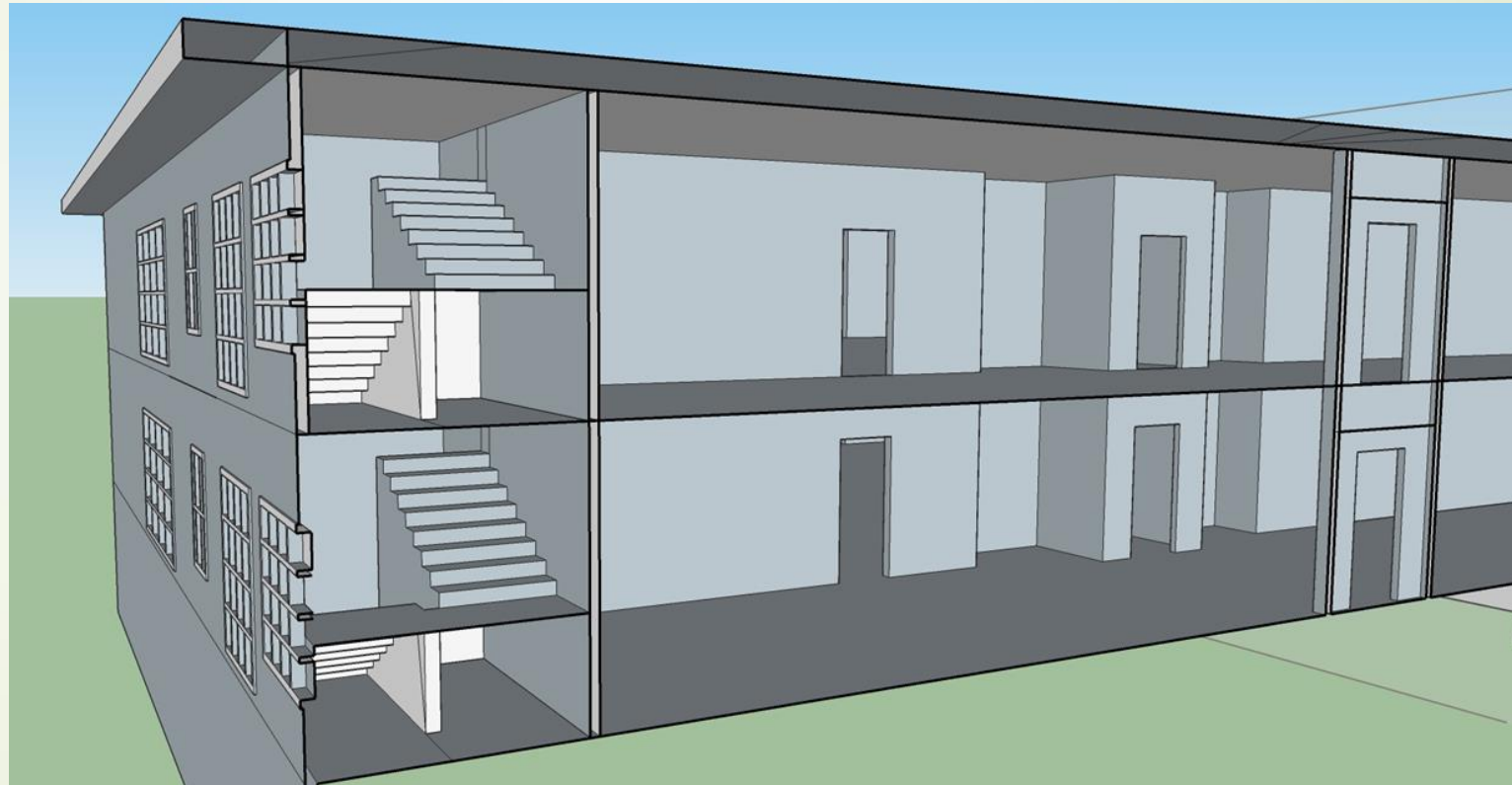
Elevation Sketches



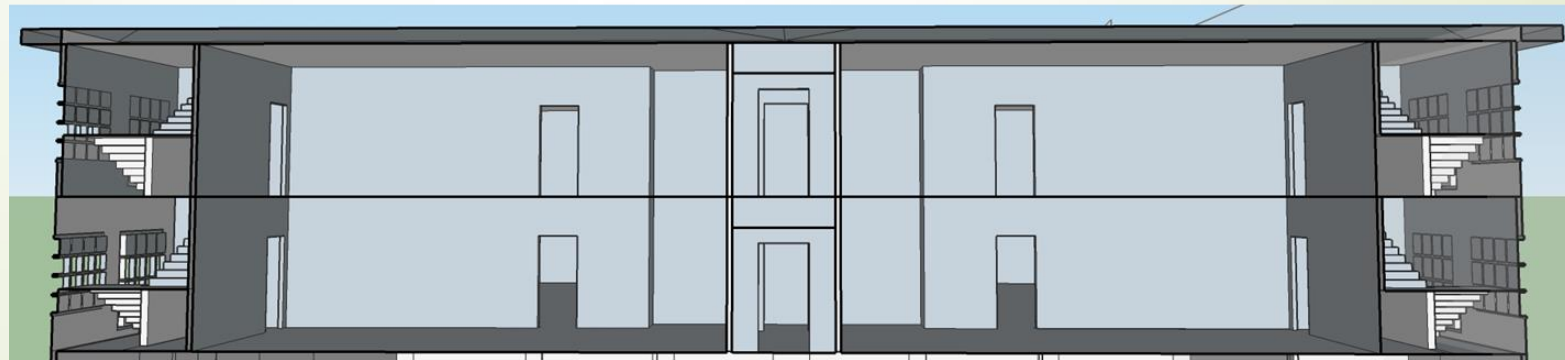
Floor Plan



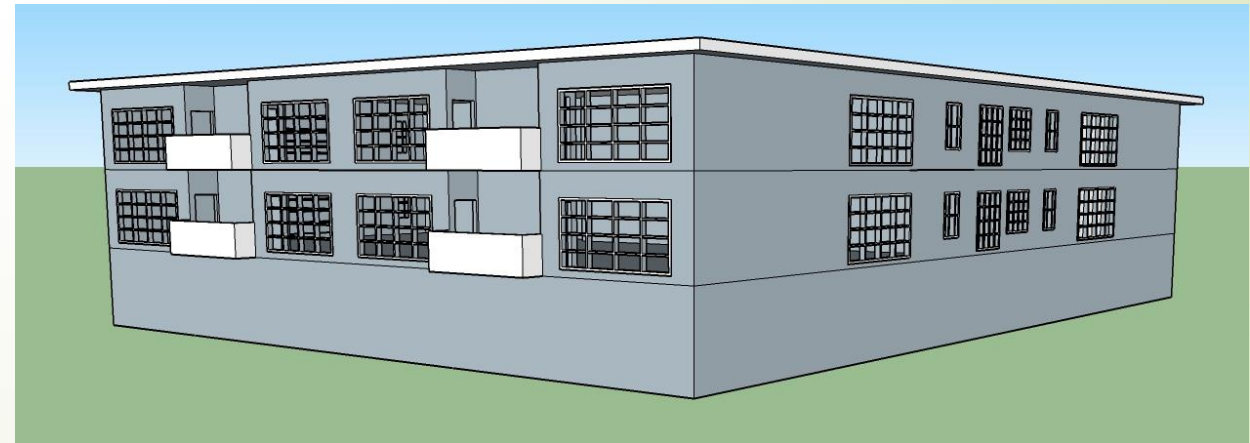
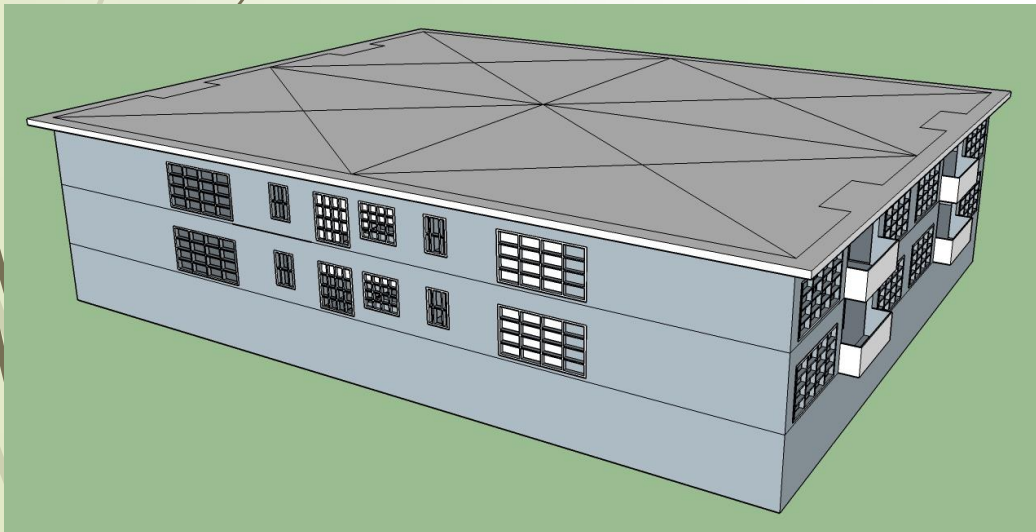
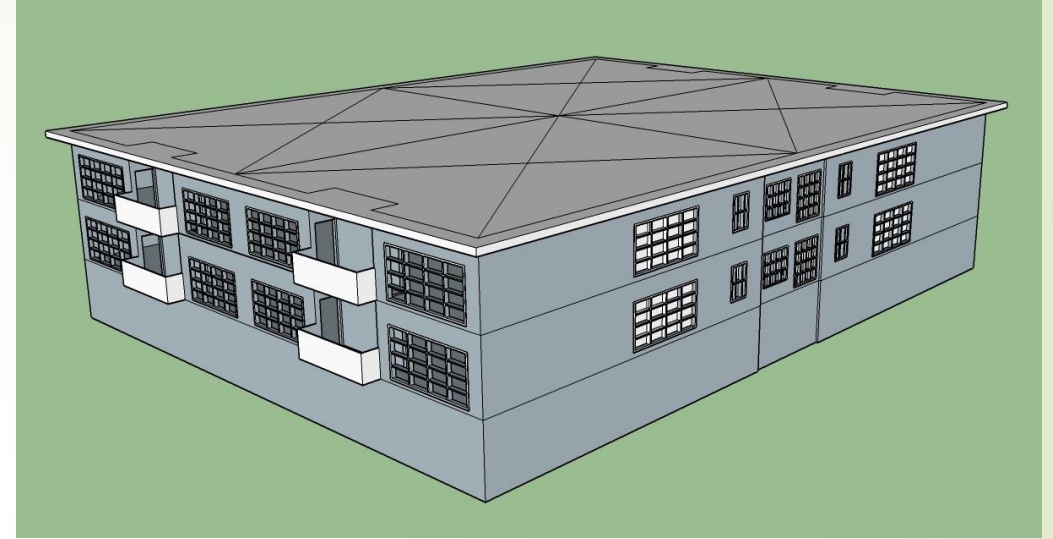
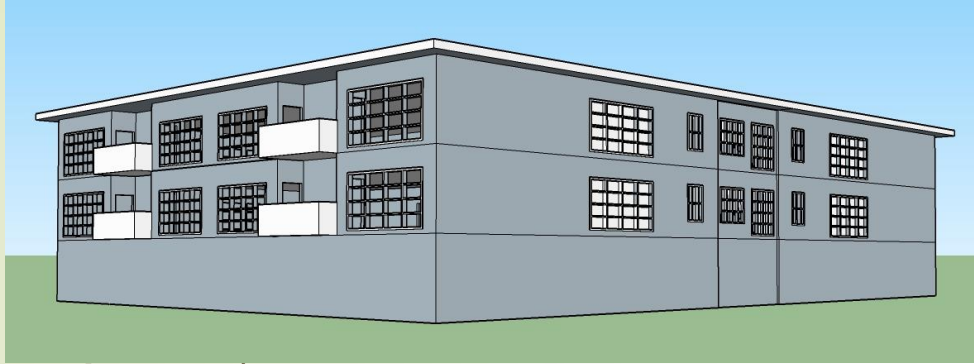
Section View



Section View



Bird's Eye View



Client- Pat and Fran

- ▶ Pat and Fran met at University of Pittsburgh, where they both work
 - ▶ Pat- teaches Decorative Arts, retires in about 5 years
 - ▶ Fran- teaches Neurophysics, already retired
- ▶ Fran is deaf
 - ▶ Will require certain needs in a living space





Move to Greenville, NC

- ▶ They are wanting to move to be closer to their daughter Danna
- ▶ They chose Greenville for:
 - ▶ Nice weather and climate
 - ▶ Low cost of living
- ▶ Chose a condo community:
 - ▶ Active area to keep Fran occupied while Pat works
 - ▶ Is suitable for everyone's needs; earring loss and wheelchair accessible

Children- Dale and Dana

- Dale (oldest)
 - Lives in Pittsburg, PA with his family; wife and 2 kids
 - will be visiting his parents as often as possible.
- Dana (youngest)
 - Lives in Fayetteville, NC
 - a retired Veteran
 - was injured in a tragic accident which caused her to lose both of her legs
 - Plans to visit her parents often



Needed items

- Four pieces of furniture:
 - Heirloom settee
 - Art work 4'x4' minimum
 - Historical Dining set; able to seat 6 people
 - Decorative vitrine

