

# PORTFOLIO TWO



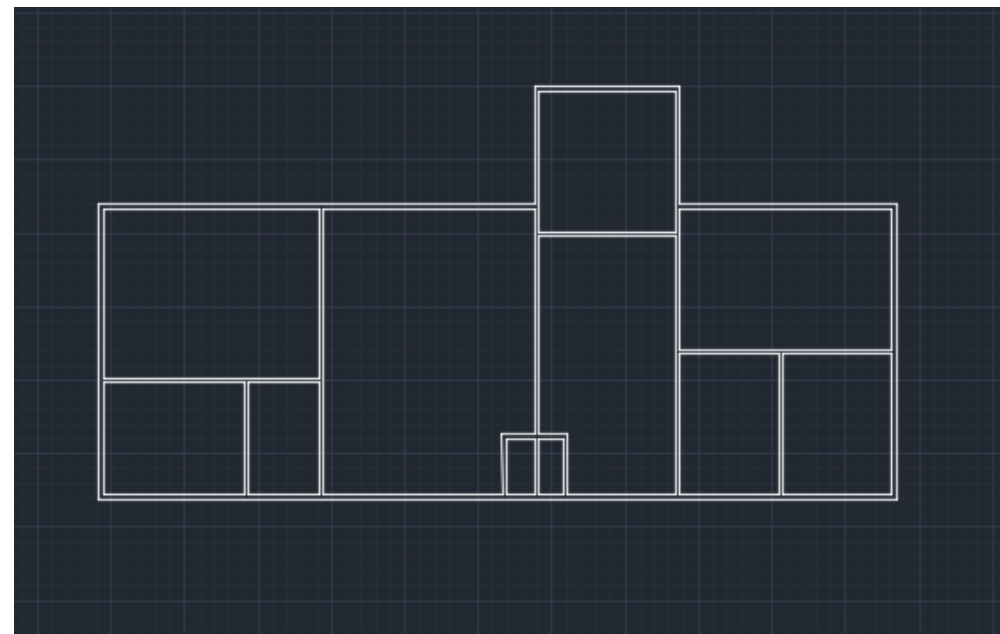
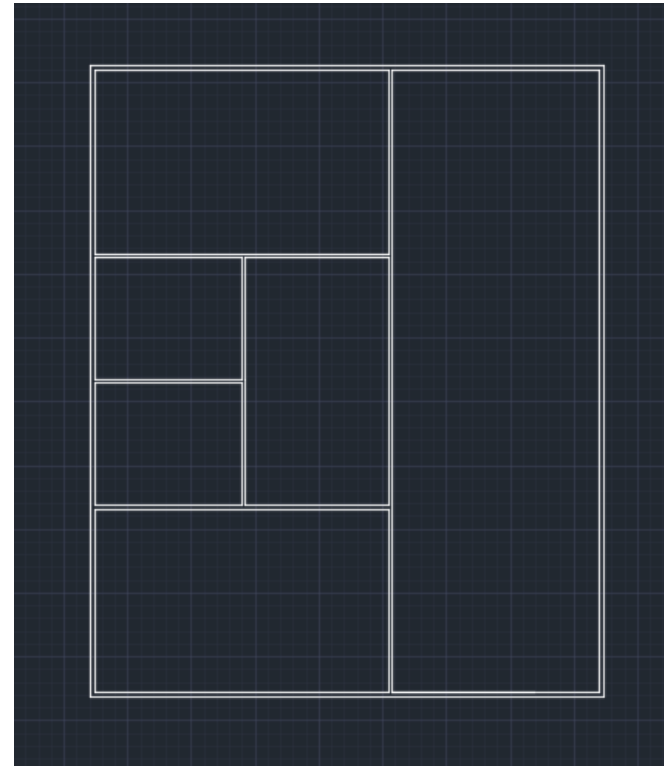
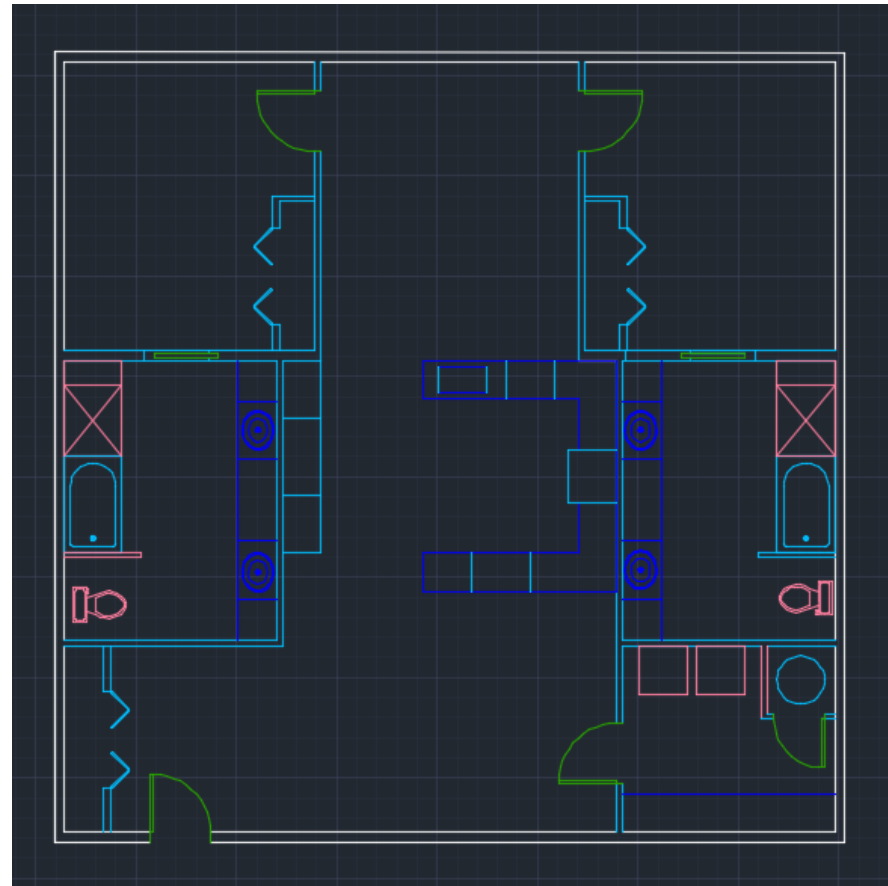
IDSN 4500

UNIVERSAL DESIGN

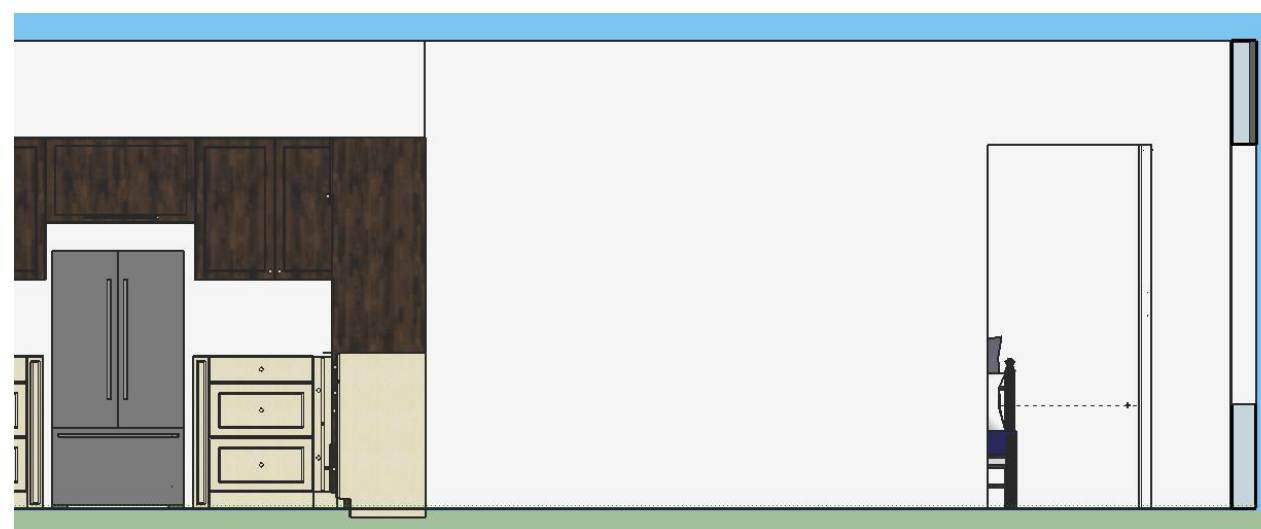
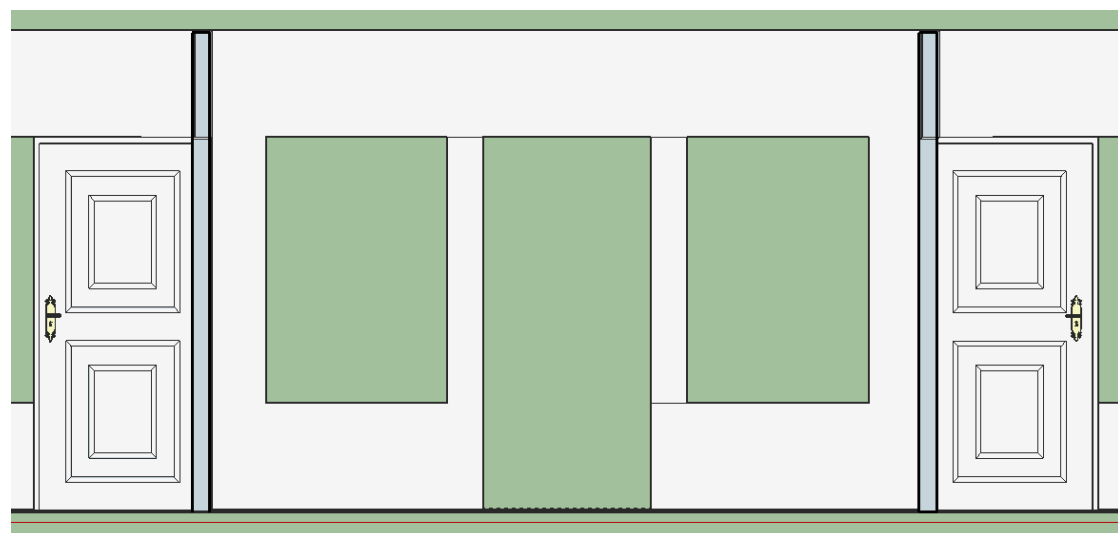
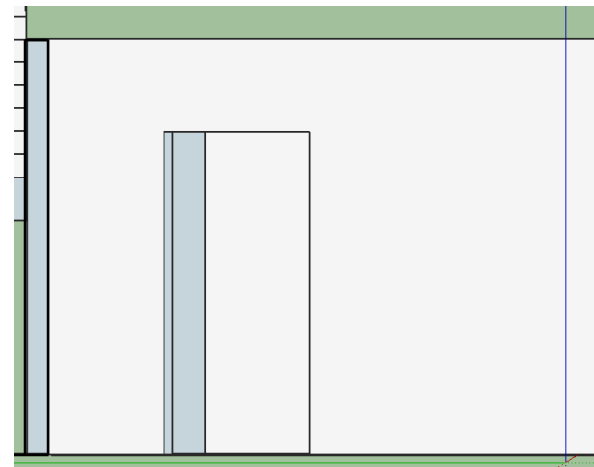
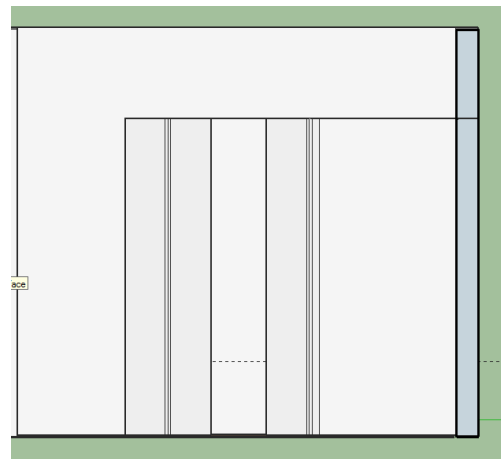
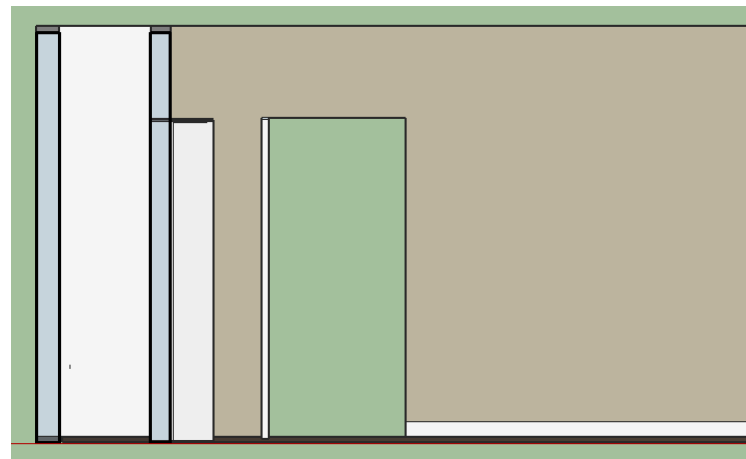
FALL 2014

MEGAN CONE

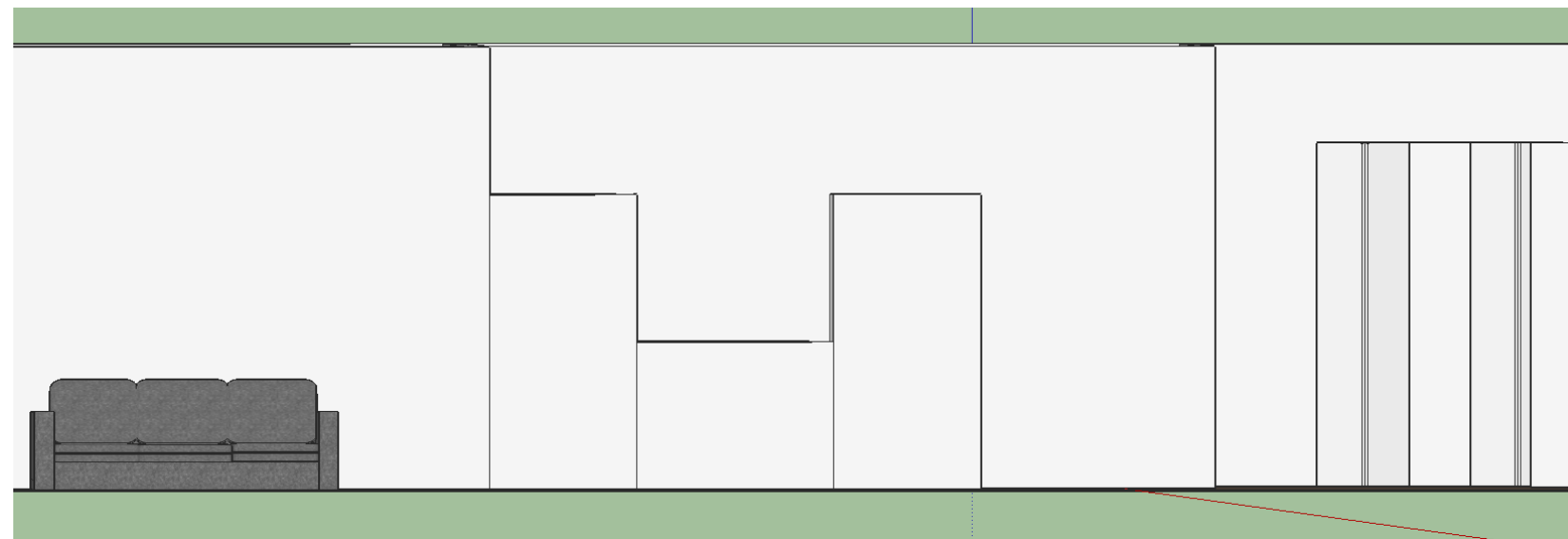
# Floor Plans



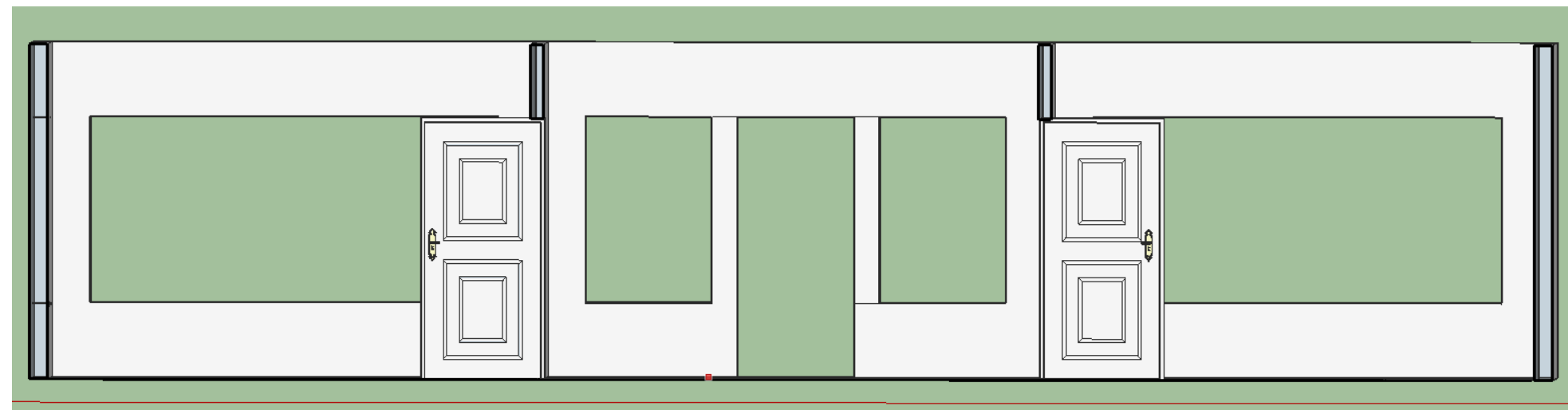
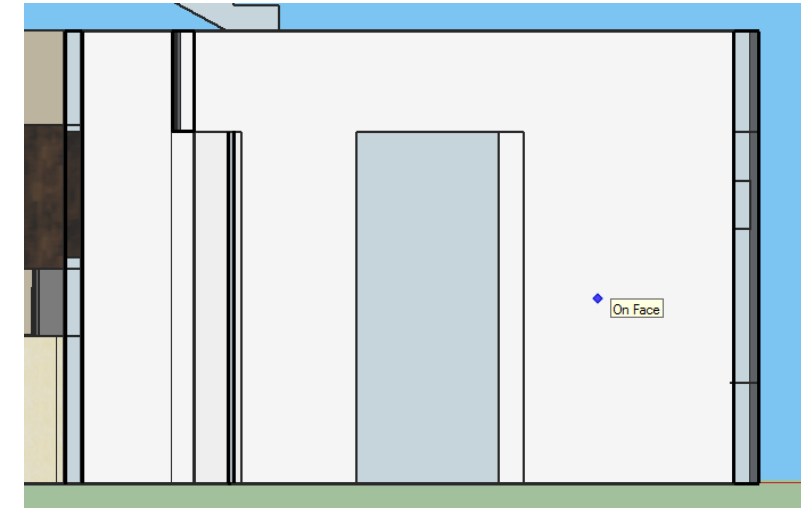
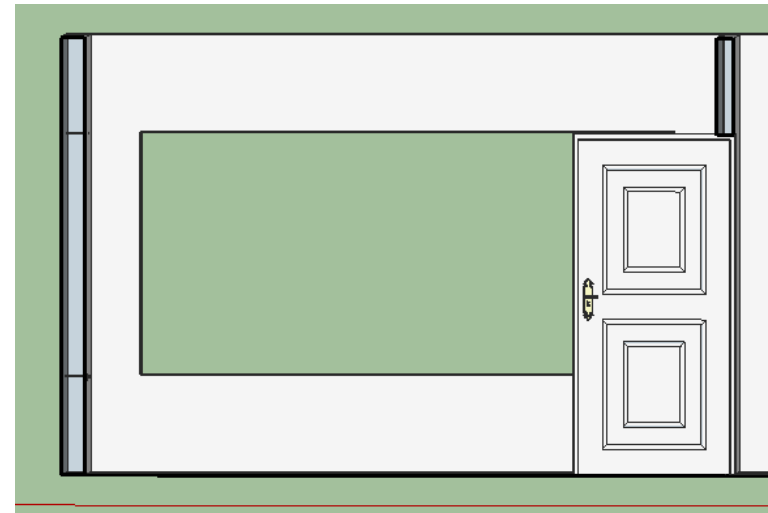
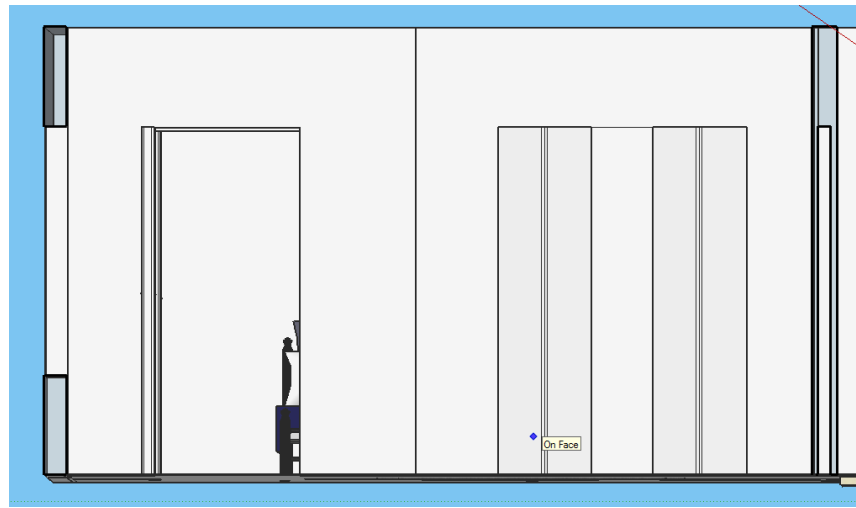
# Elevations (1)



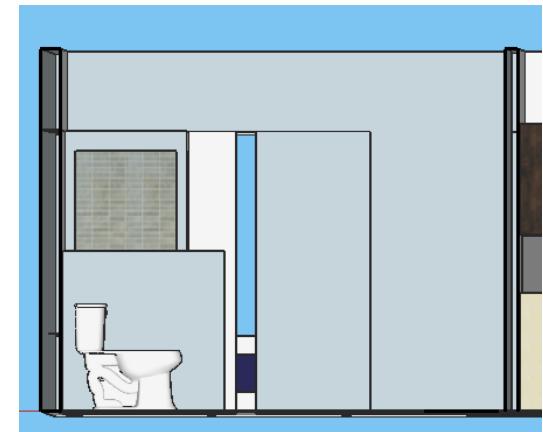
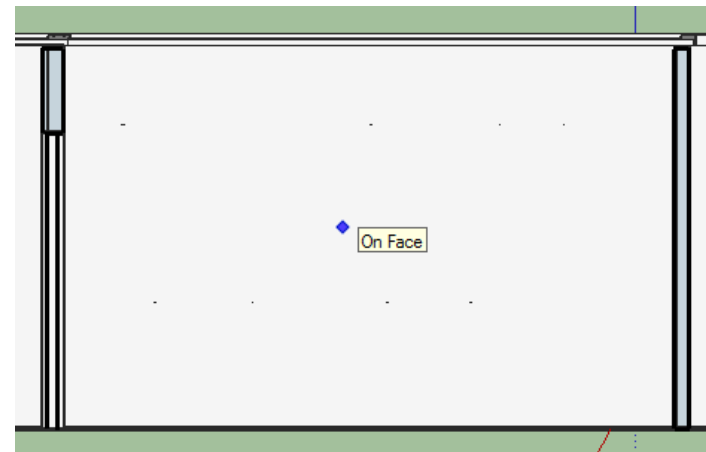
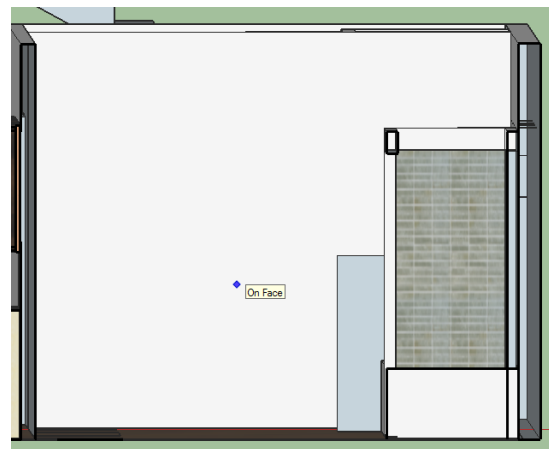
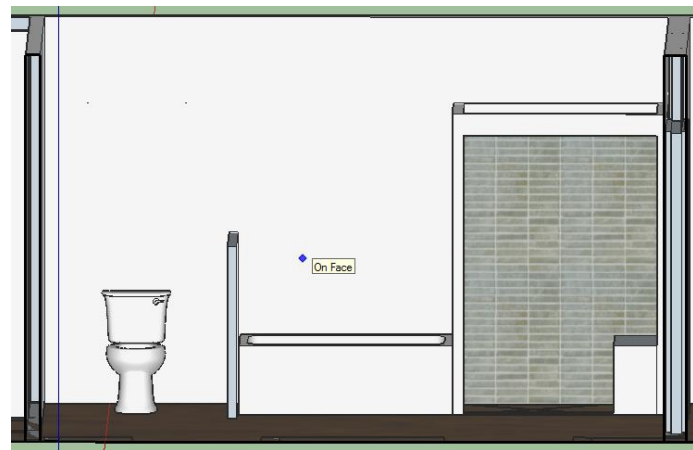
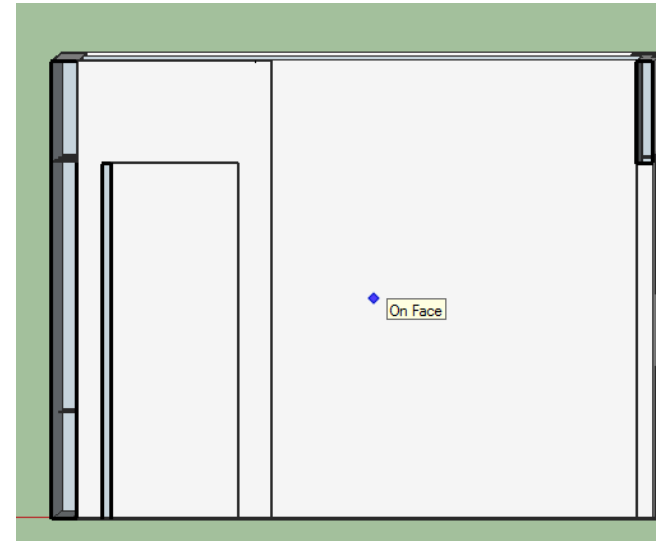
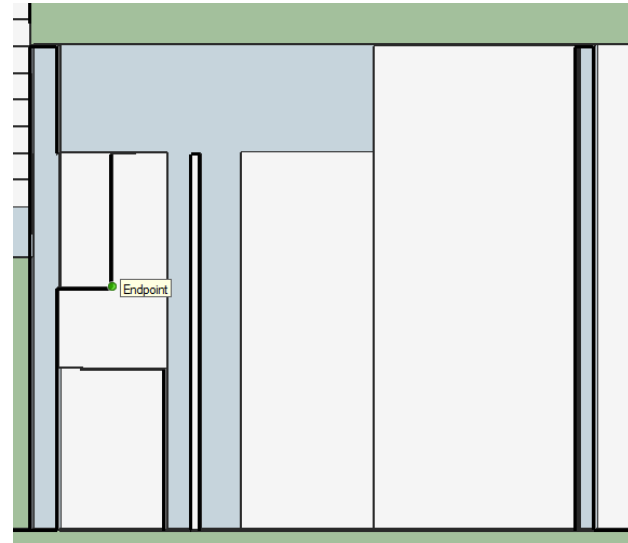
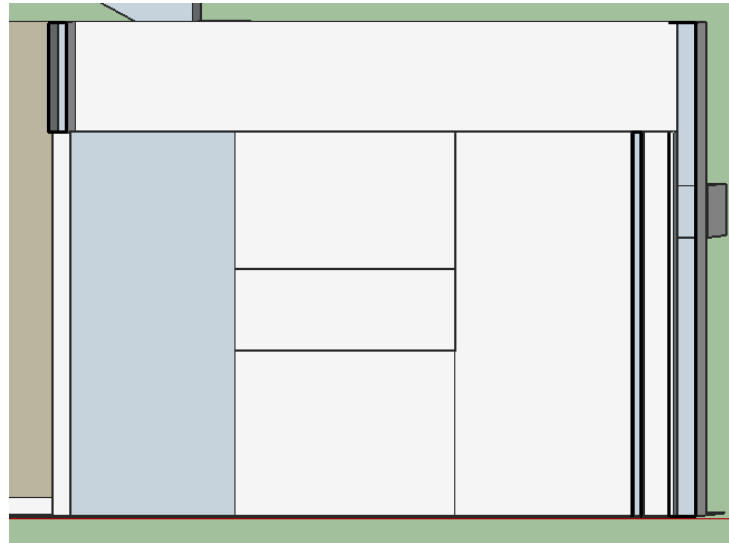
# Elevations (2)



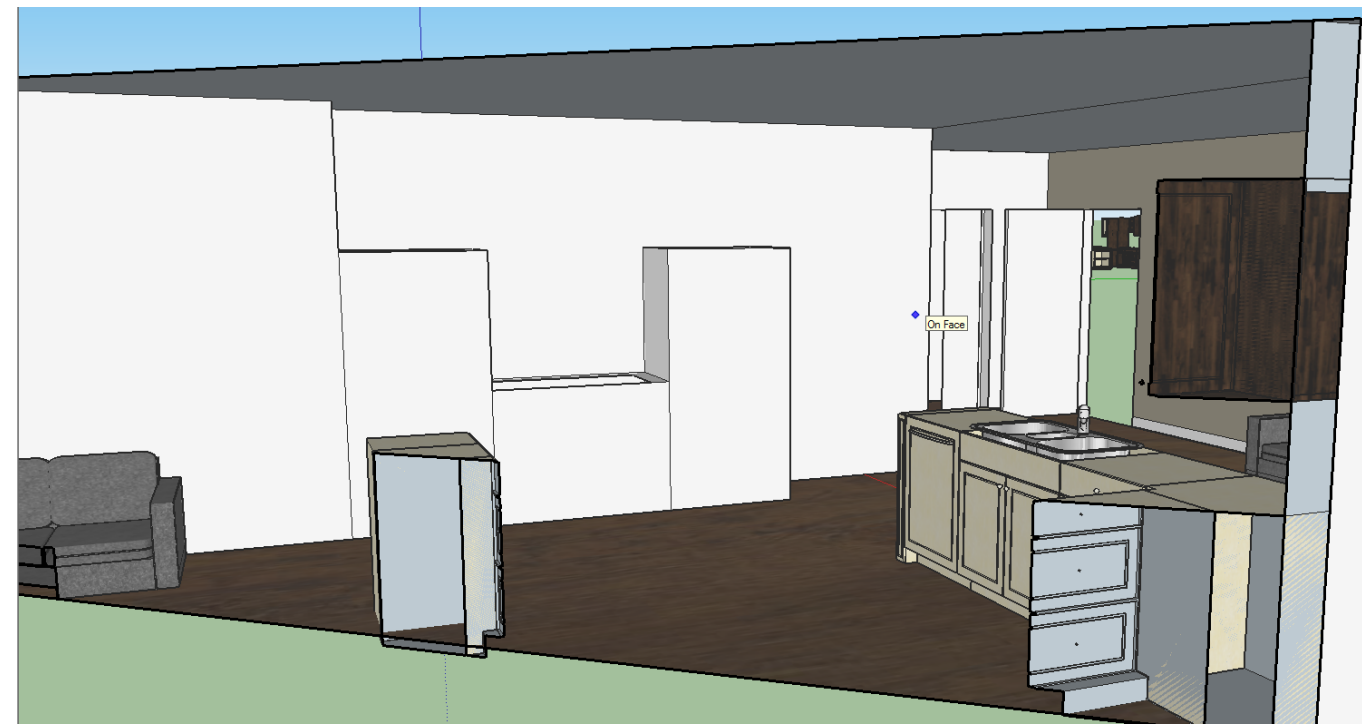
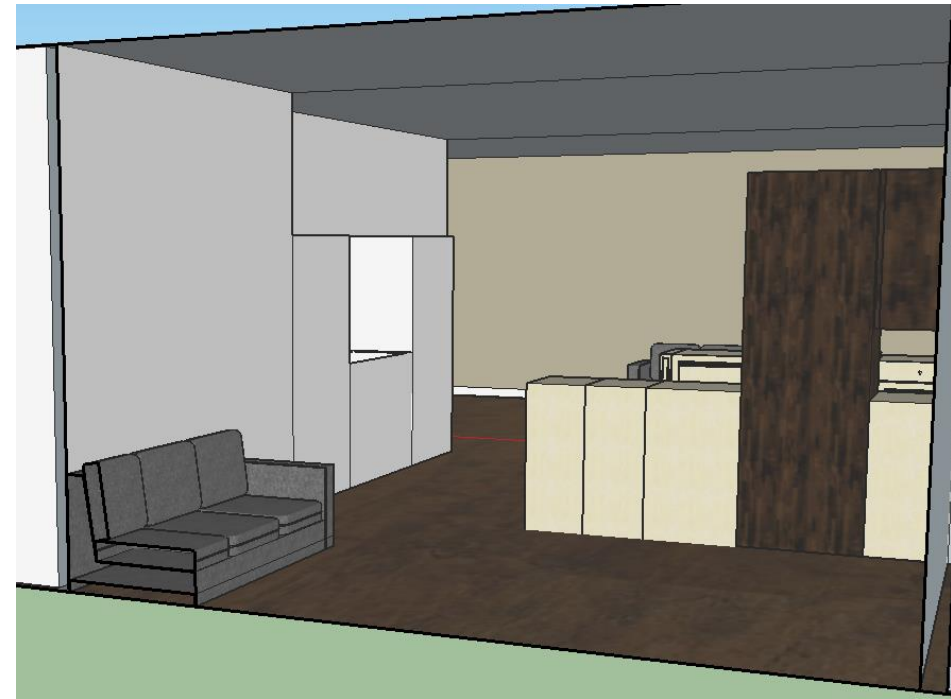
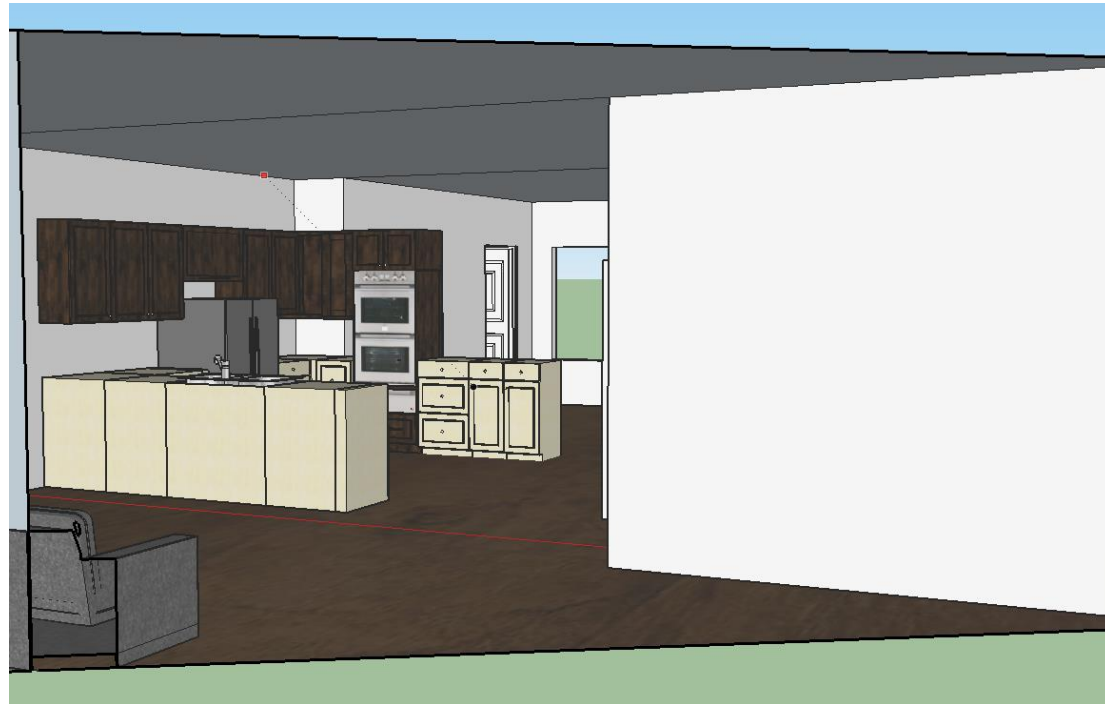
# Elevations (3)



# Elevations (4)

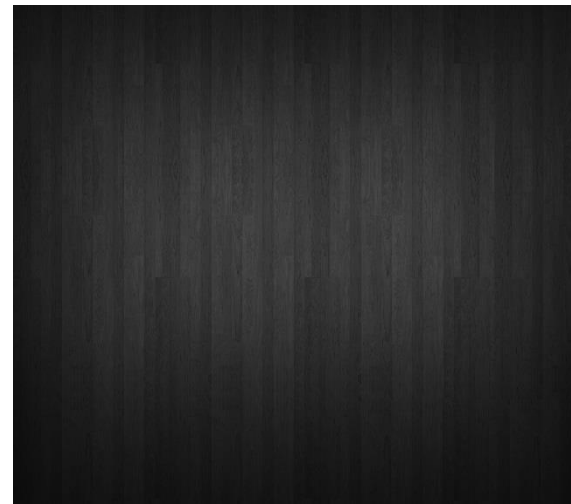
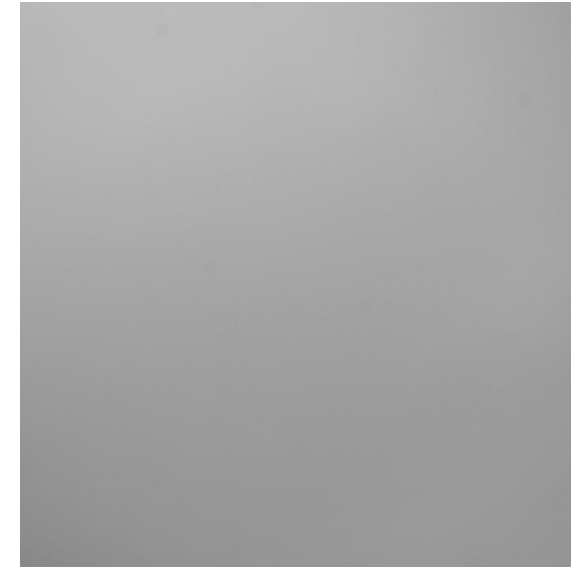


# Perspectives



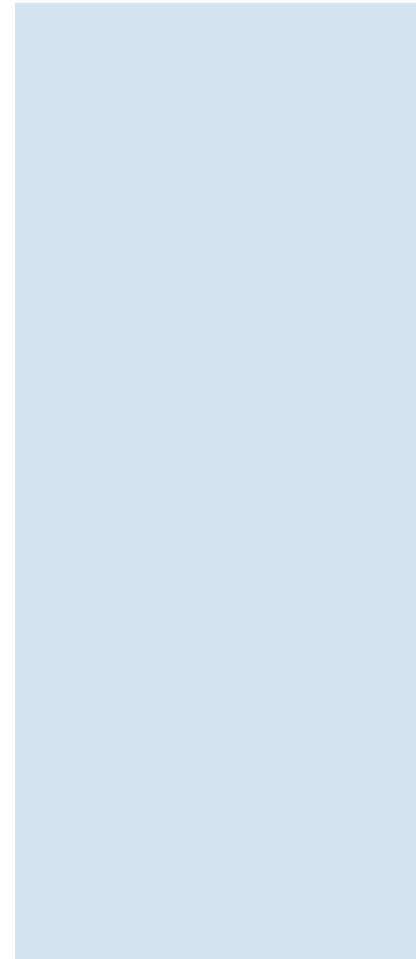


# Architectural Finishes (1)

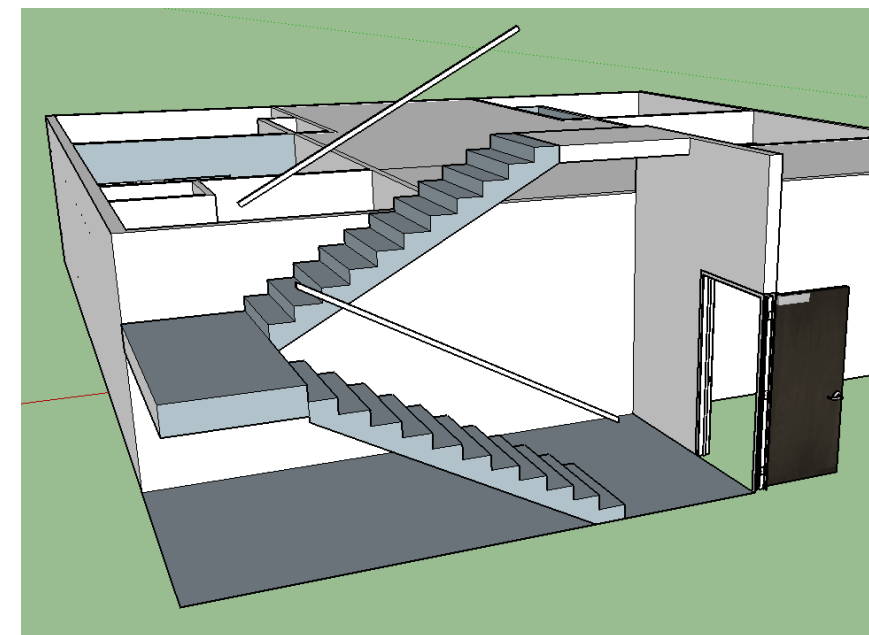
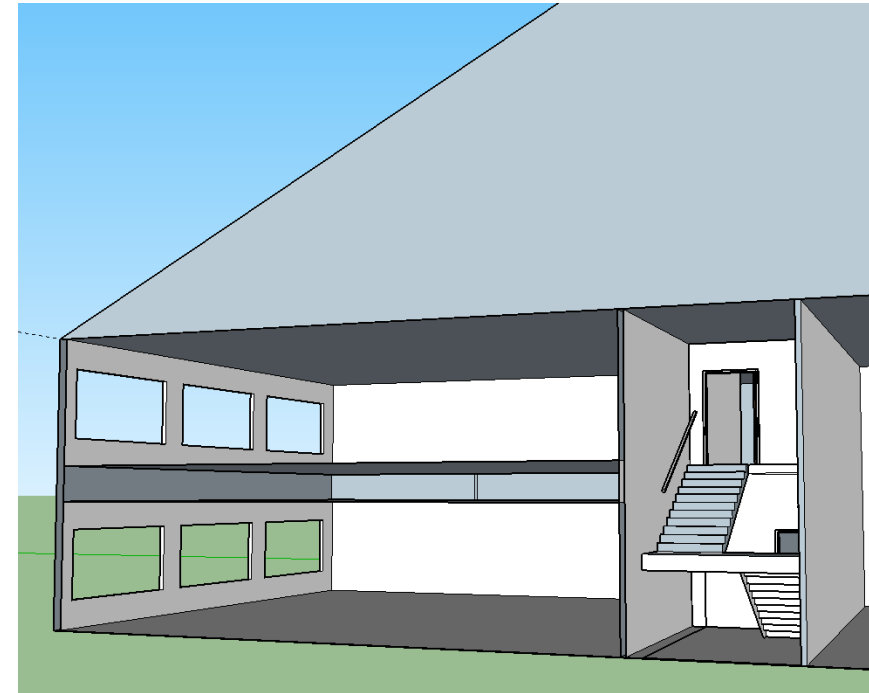
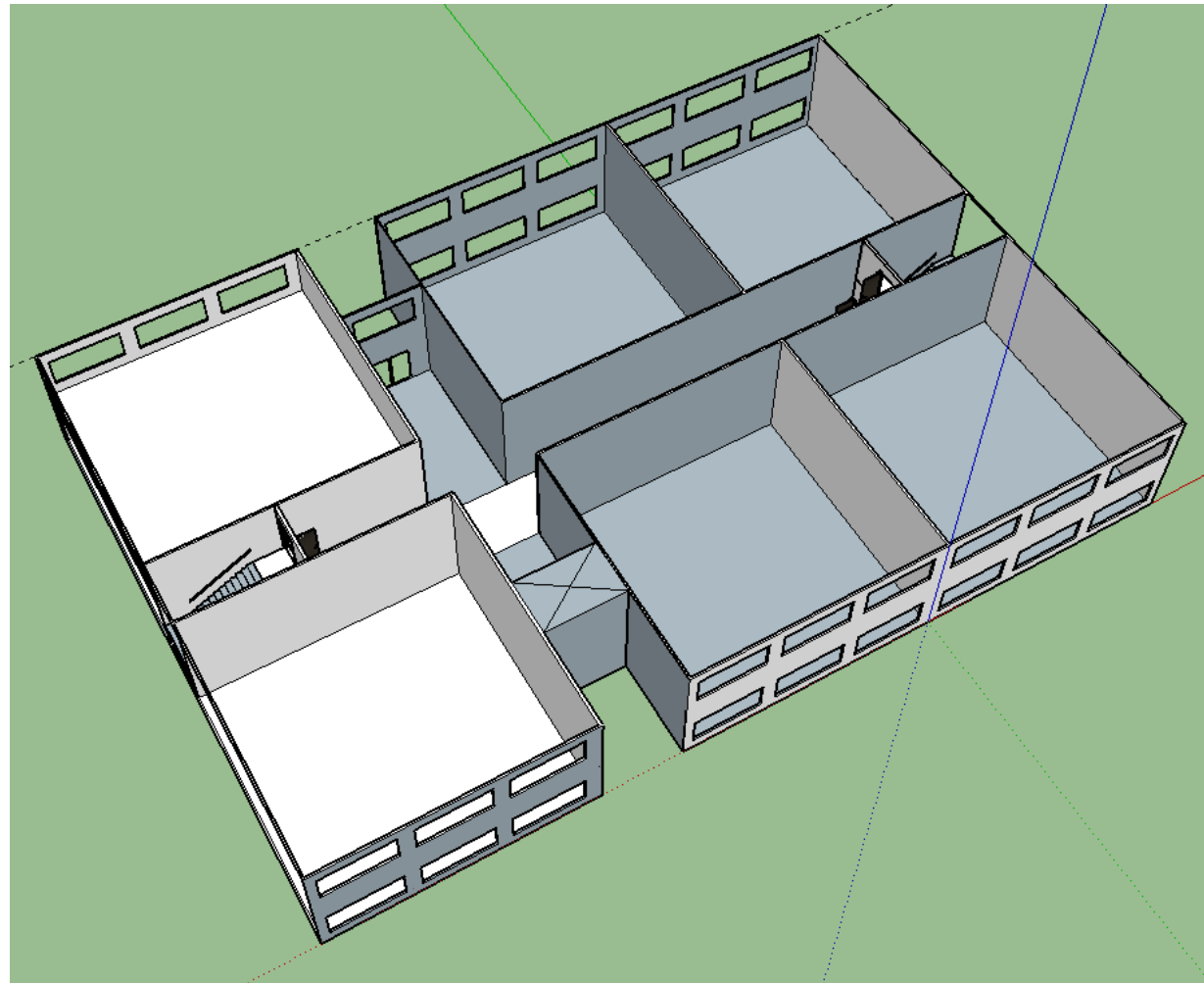




## Architectural Finishes (2)



# Massing Study



## Universal Design

- Open space with clear visibility
- Turning circles – where applicable
- Appropriate handles for doors, cabinets, etc.
- Appropriate heights for countertops and appliances



## Historical Precedents

- Traditional elements
- Timeless style
- Designed for a specific age range, however, not too taste specific

## Theories of Human Behavior

- Public spaces are open to each other – creates flow of interaction
- Private spaces are separated to ensure privacy
- Kitchen is centralized because it is, typically, seen as the center of the home

