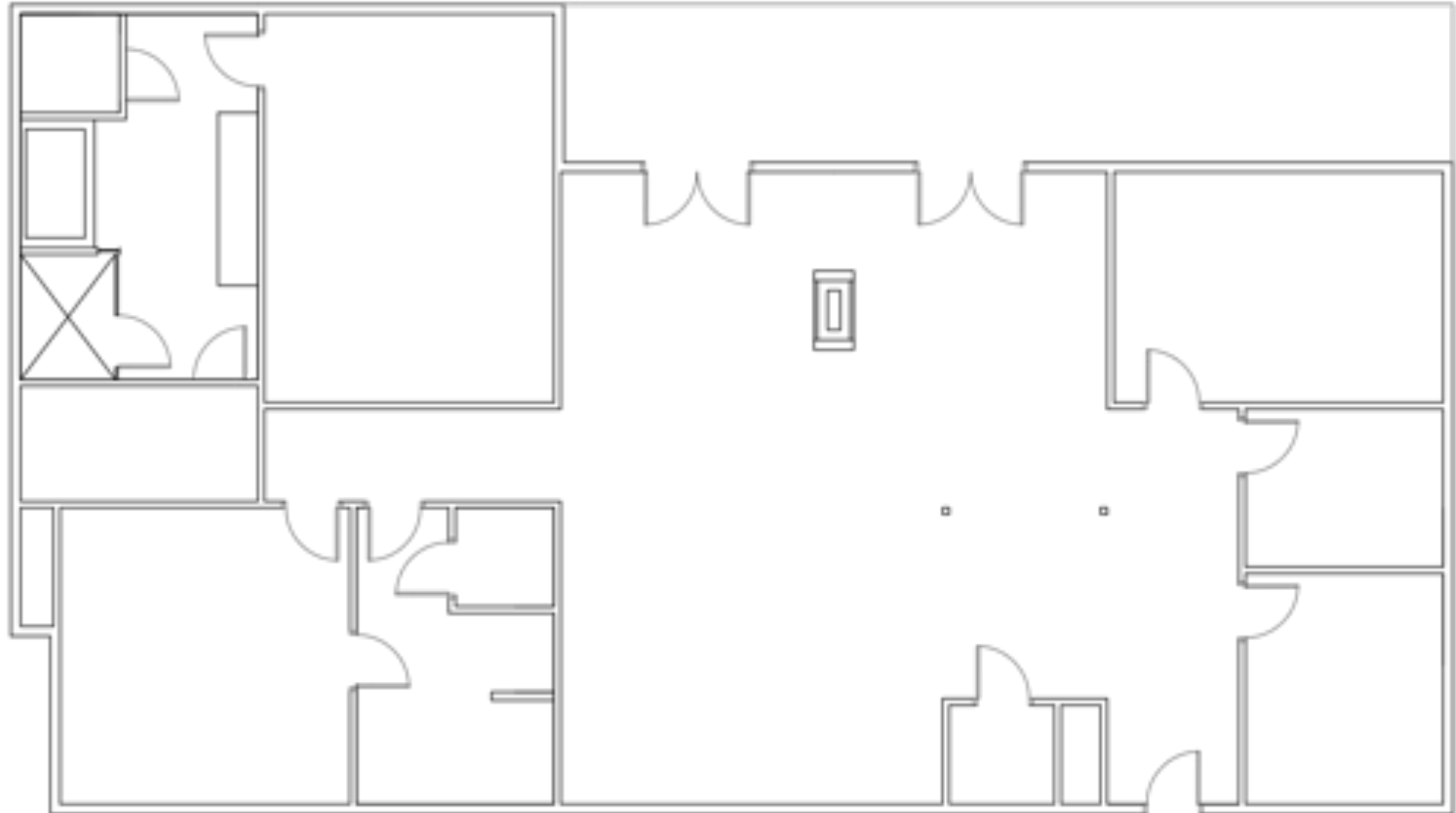




Portfolio 2

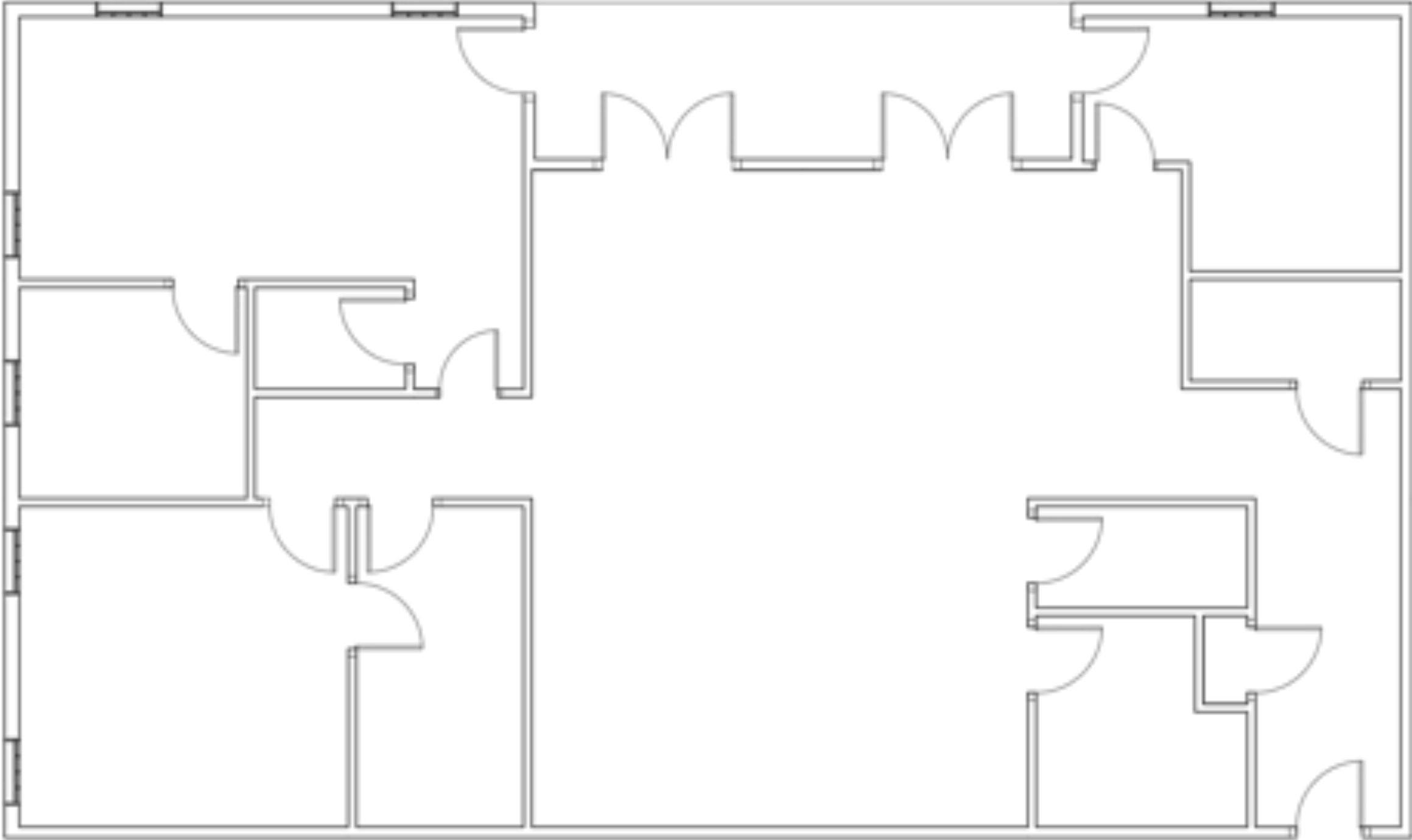
Clare Glower
IDSN 4500
Fall 2014

Floorplan: Option 1



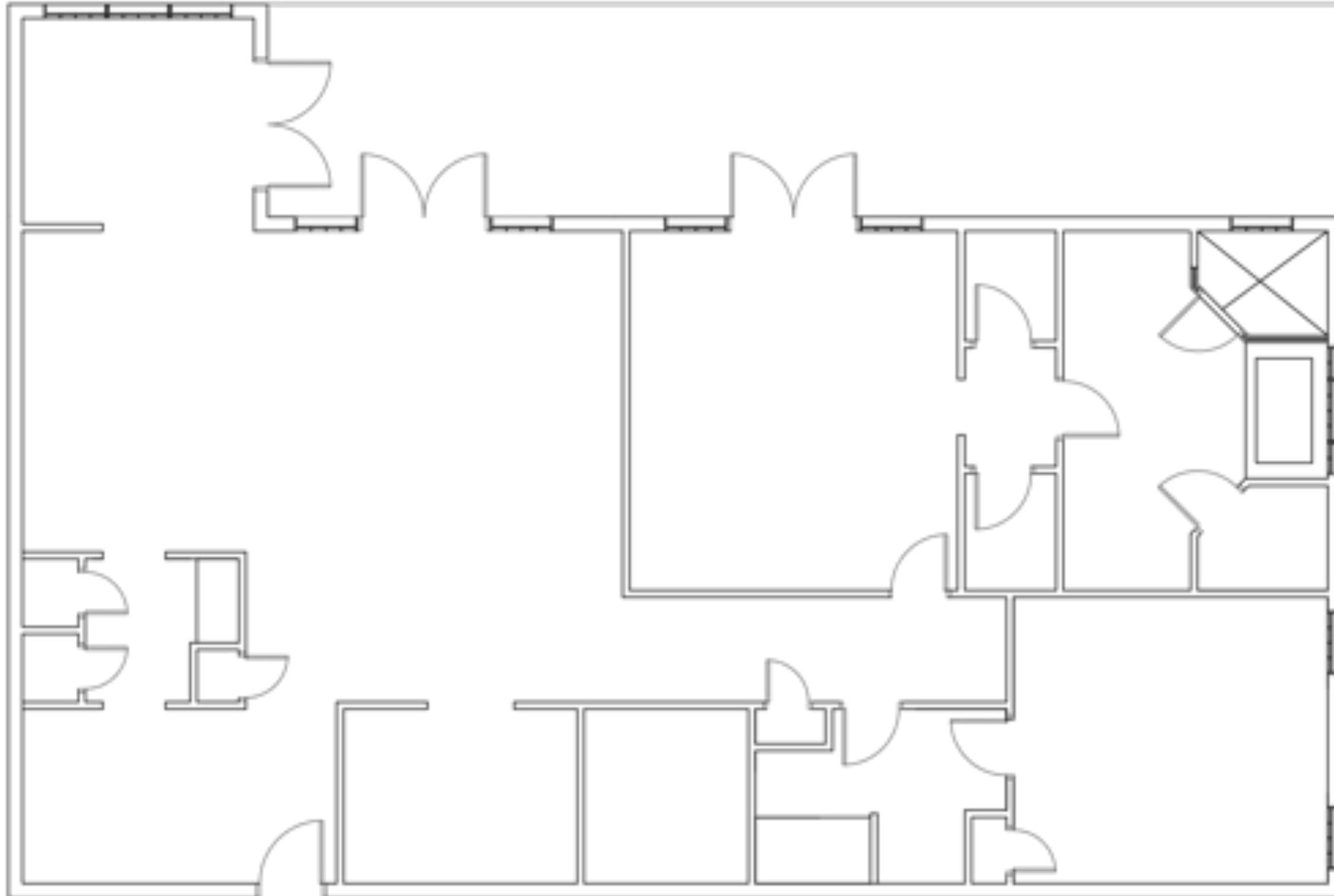
*not to scale

Floorplan: Option 2



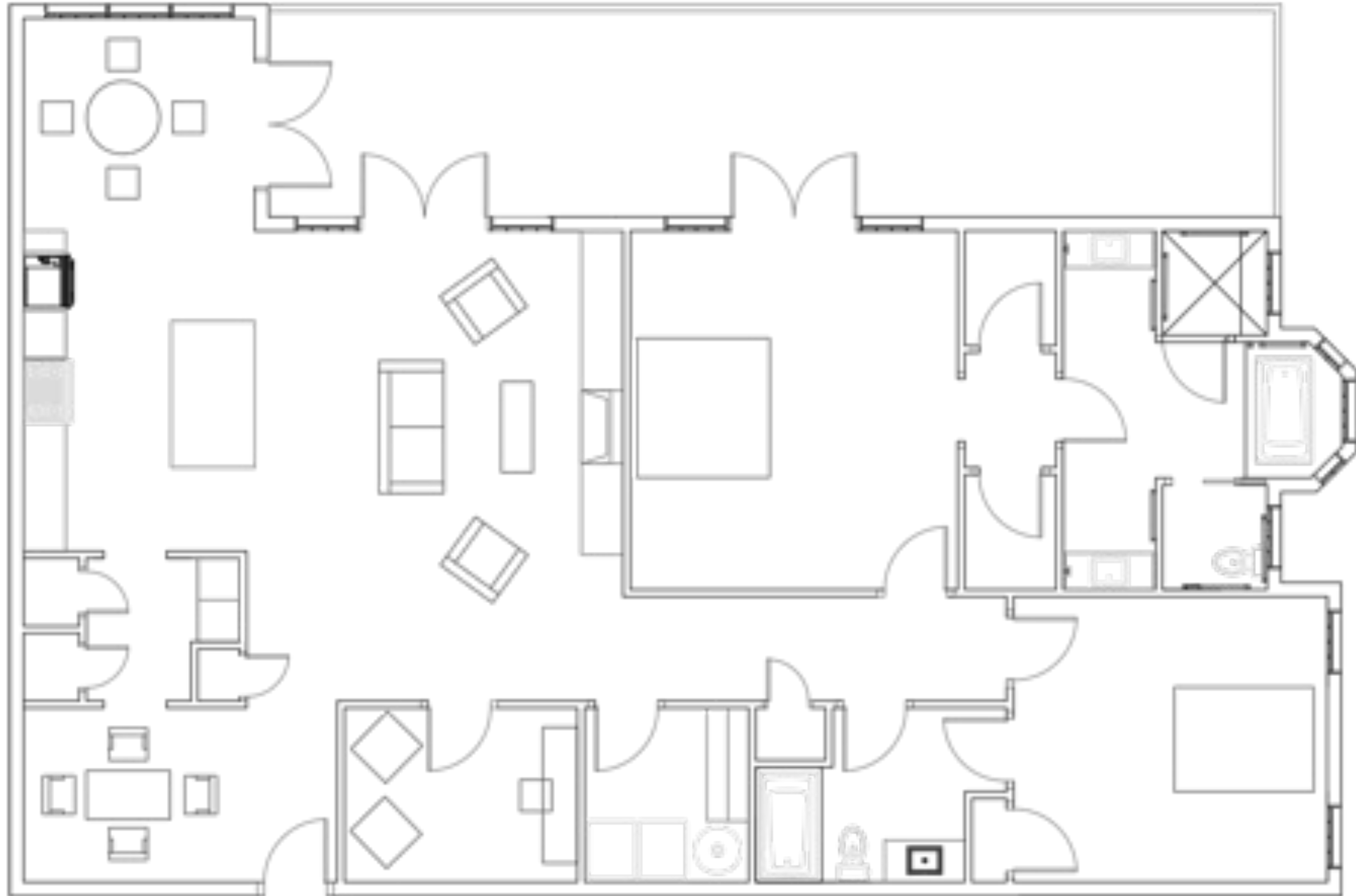
*not to scale

Floorplan: Option 3



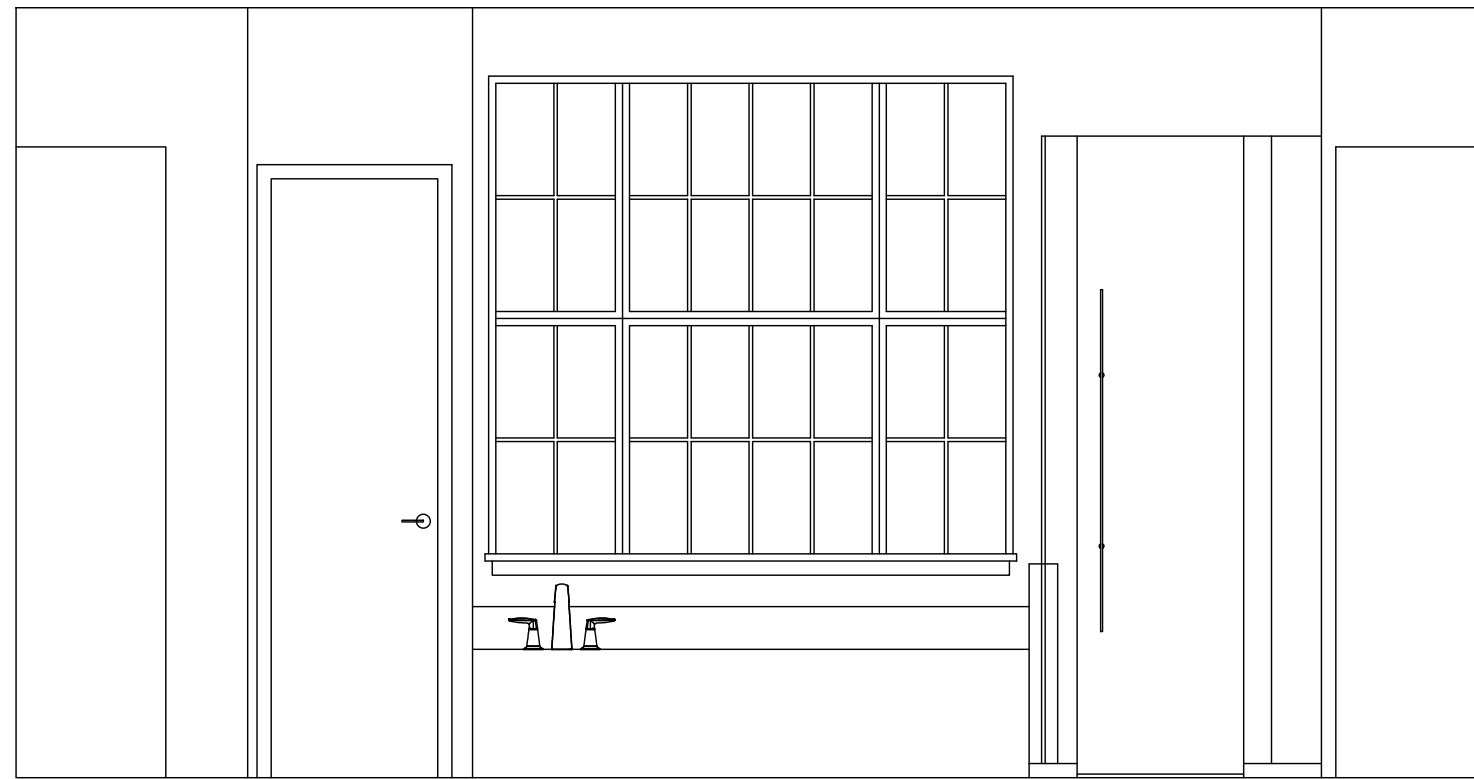
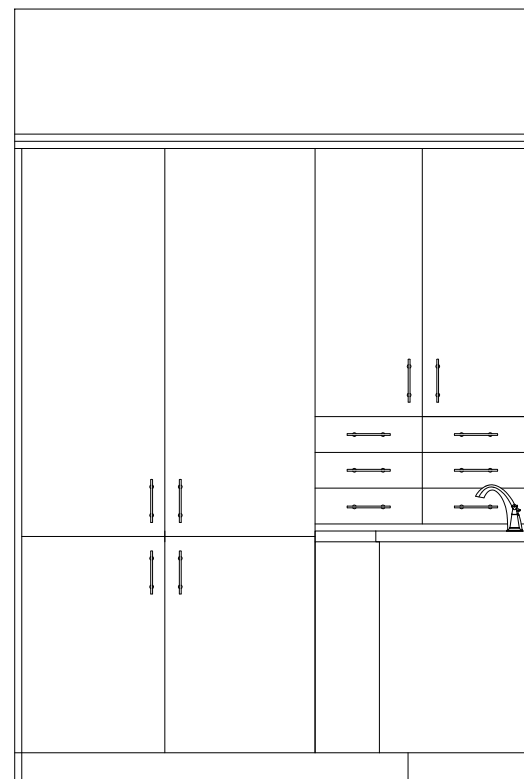
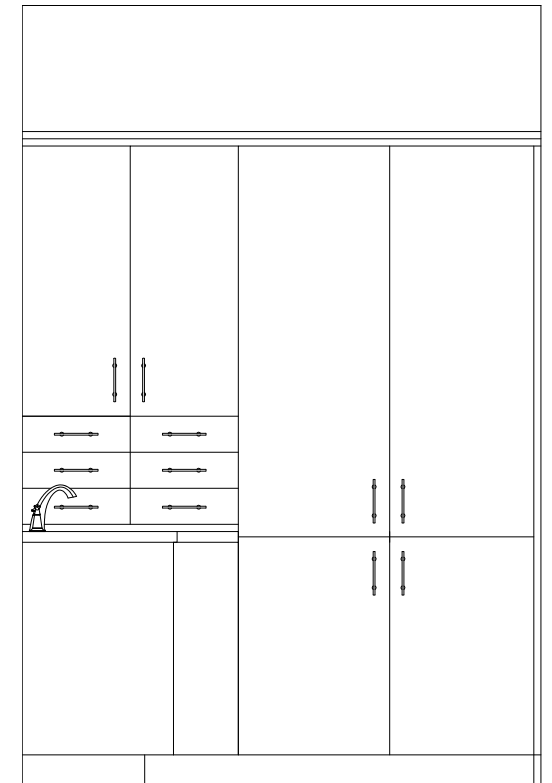
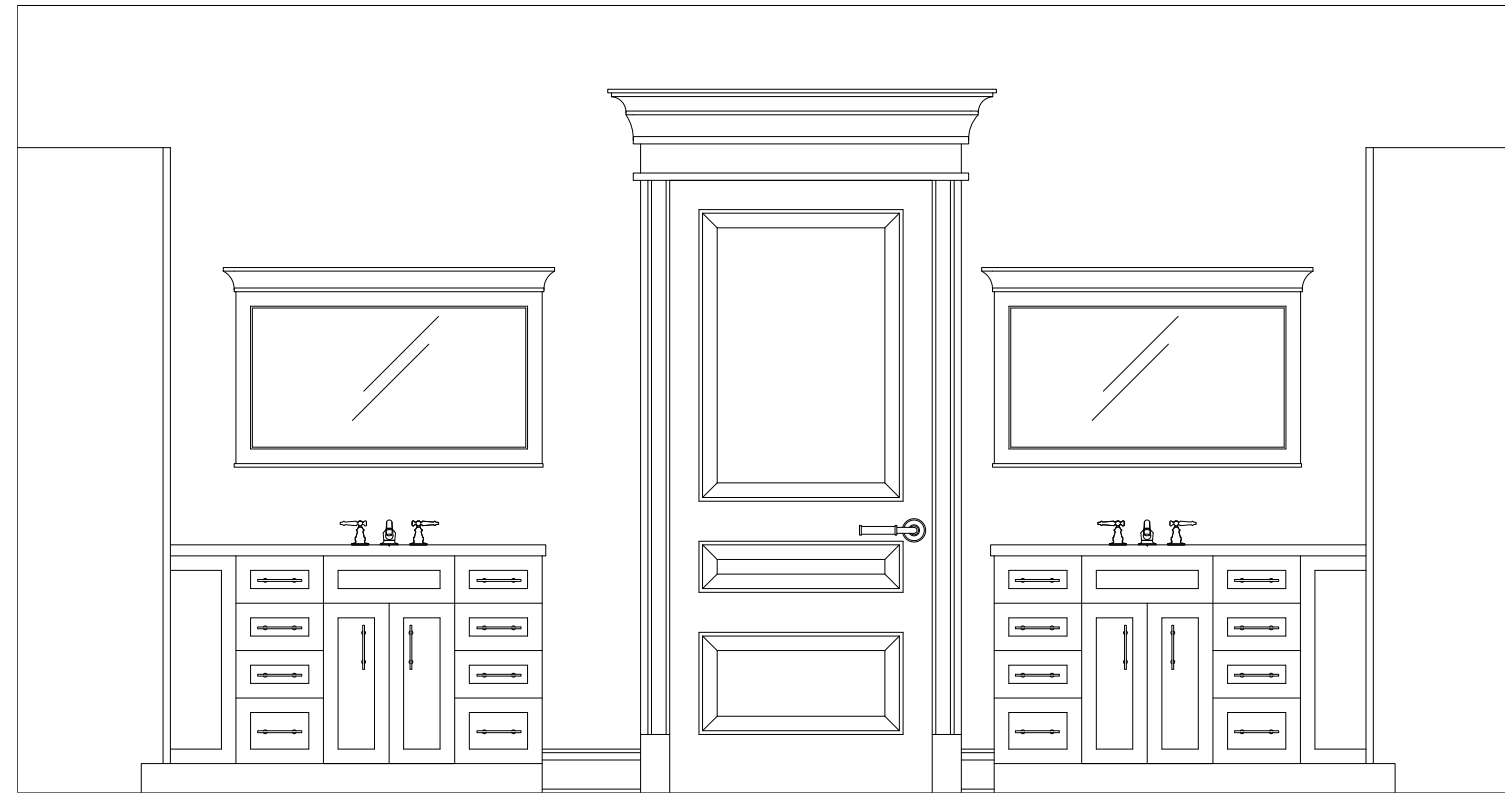
*not to scale

Floorplan: Option 3: Chosen Plan



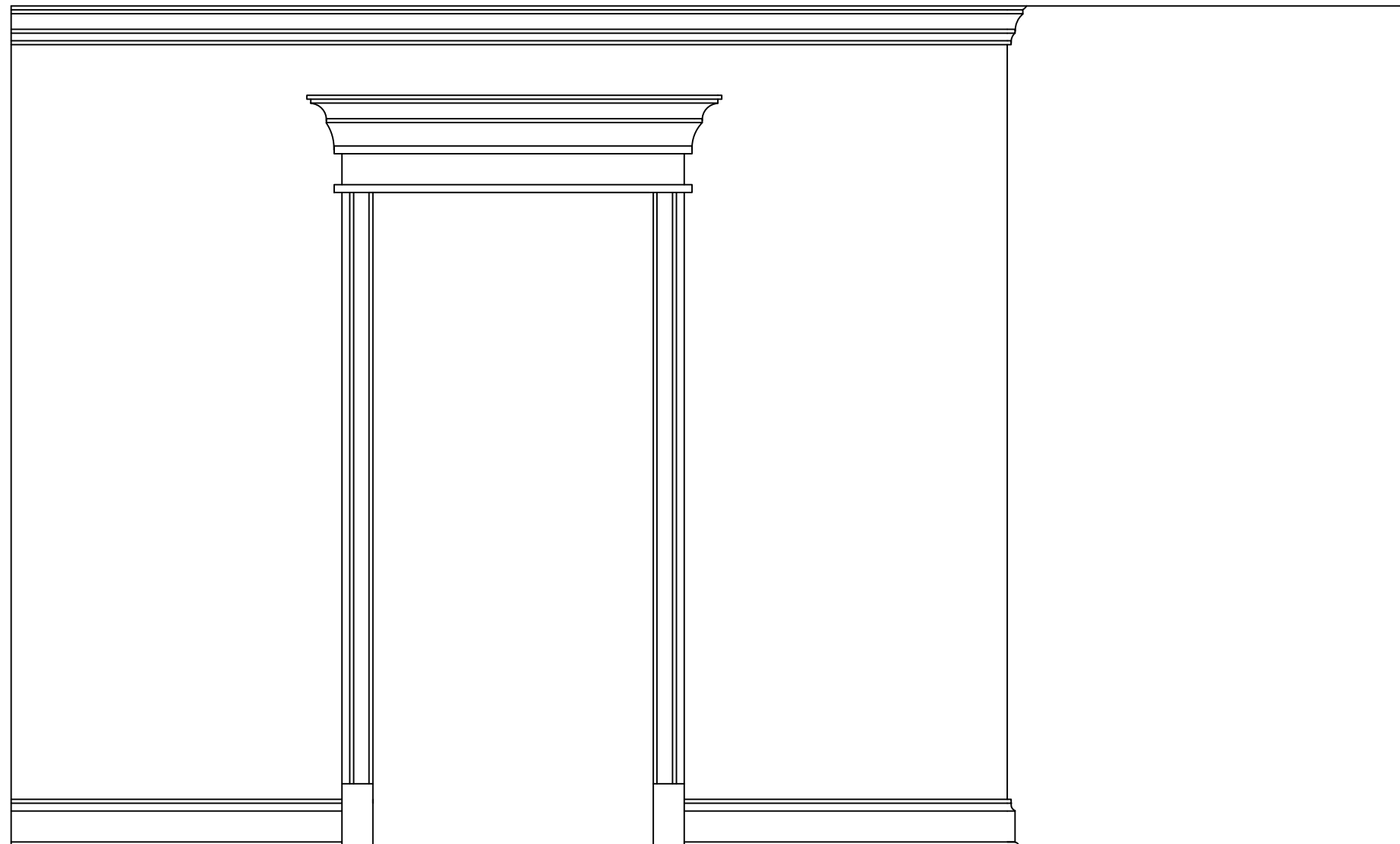
*not to scale

Elevations: Master Bathroom



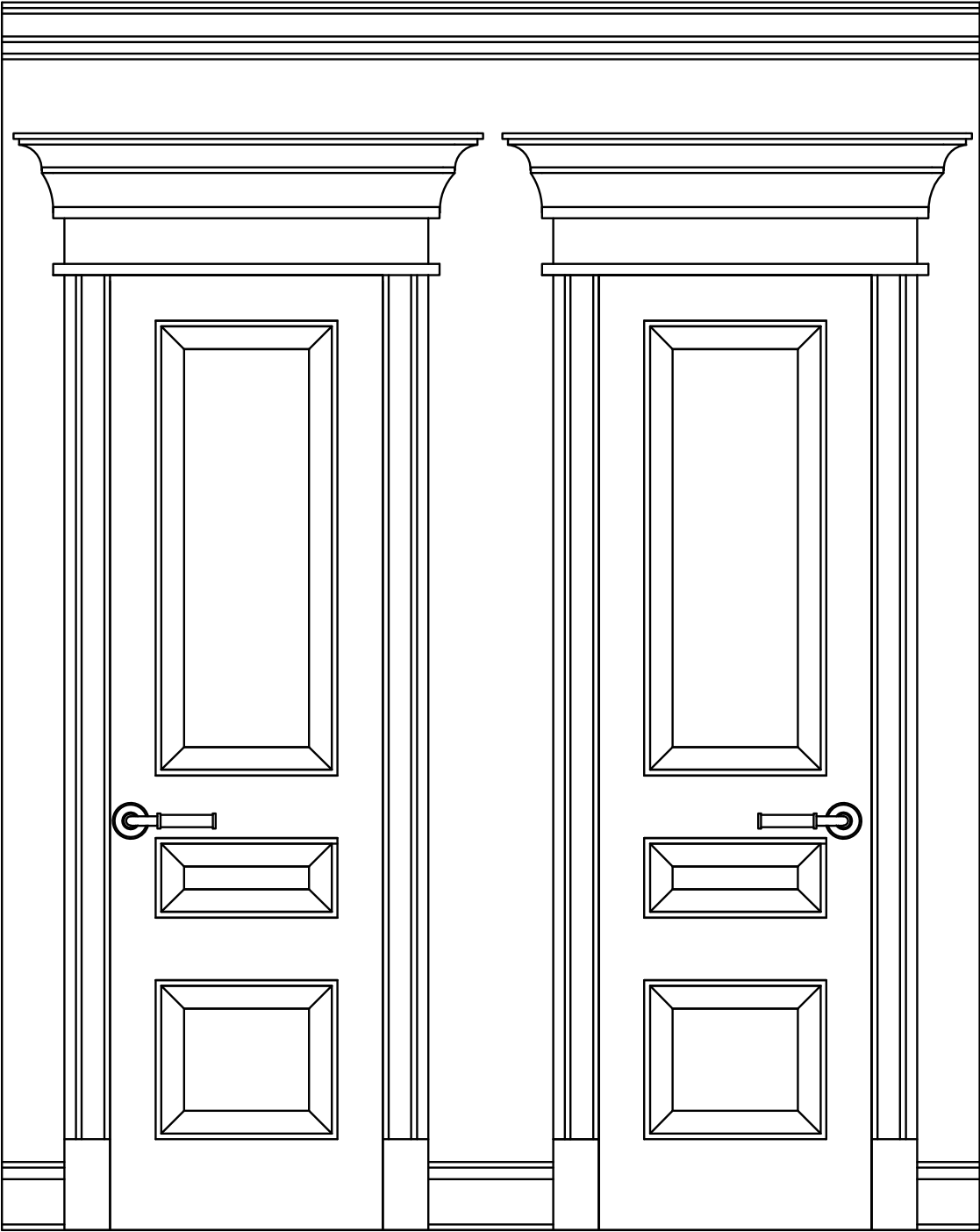
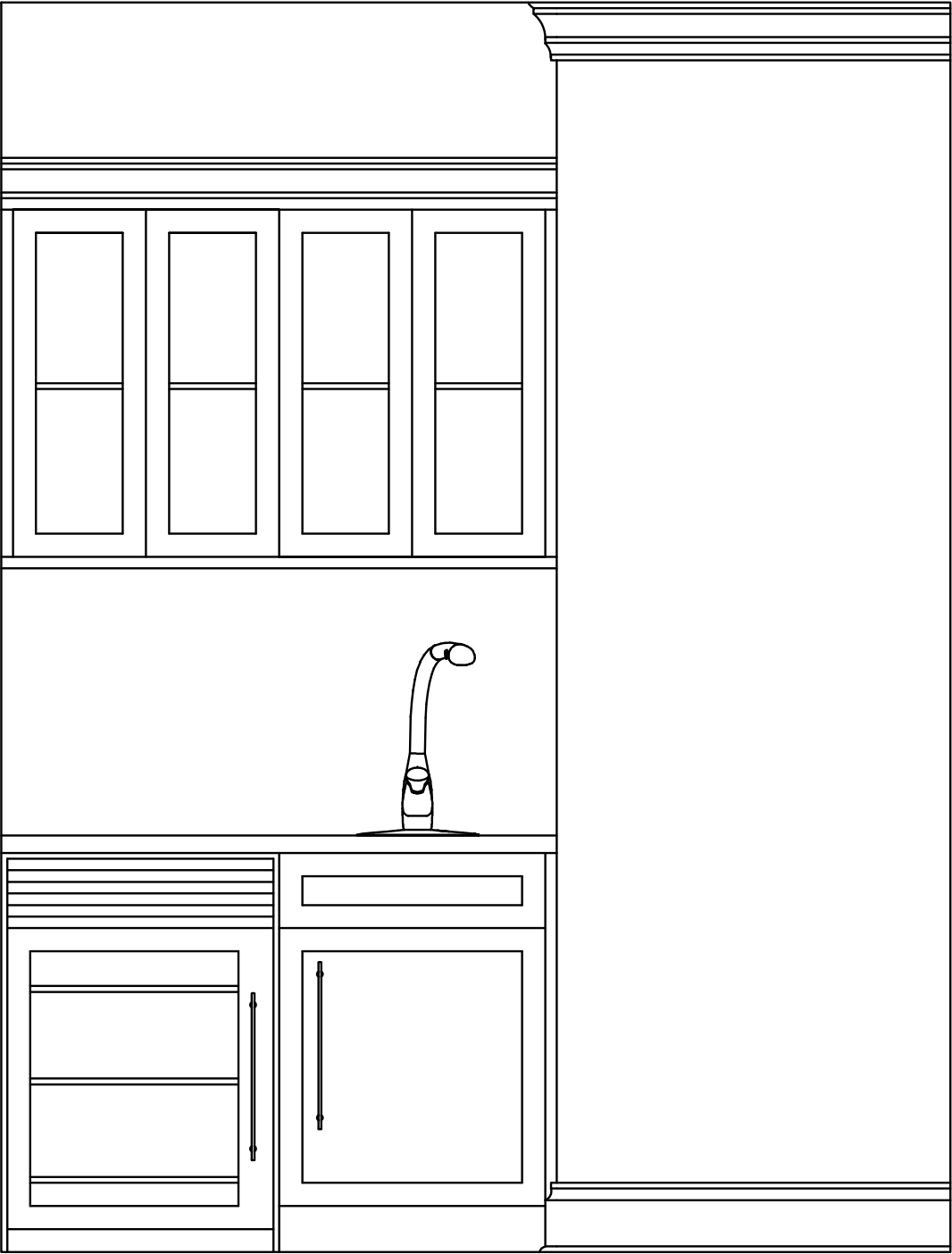
*not to scale

Elevations: Entry/Dining Room



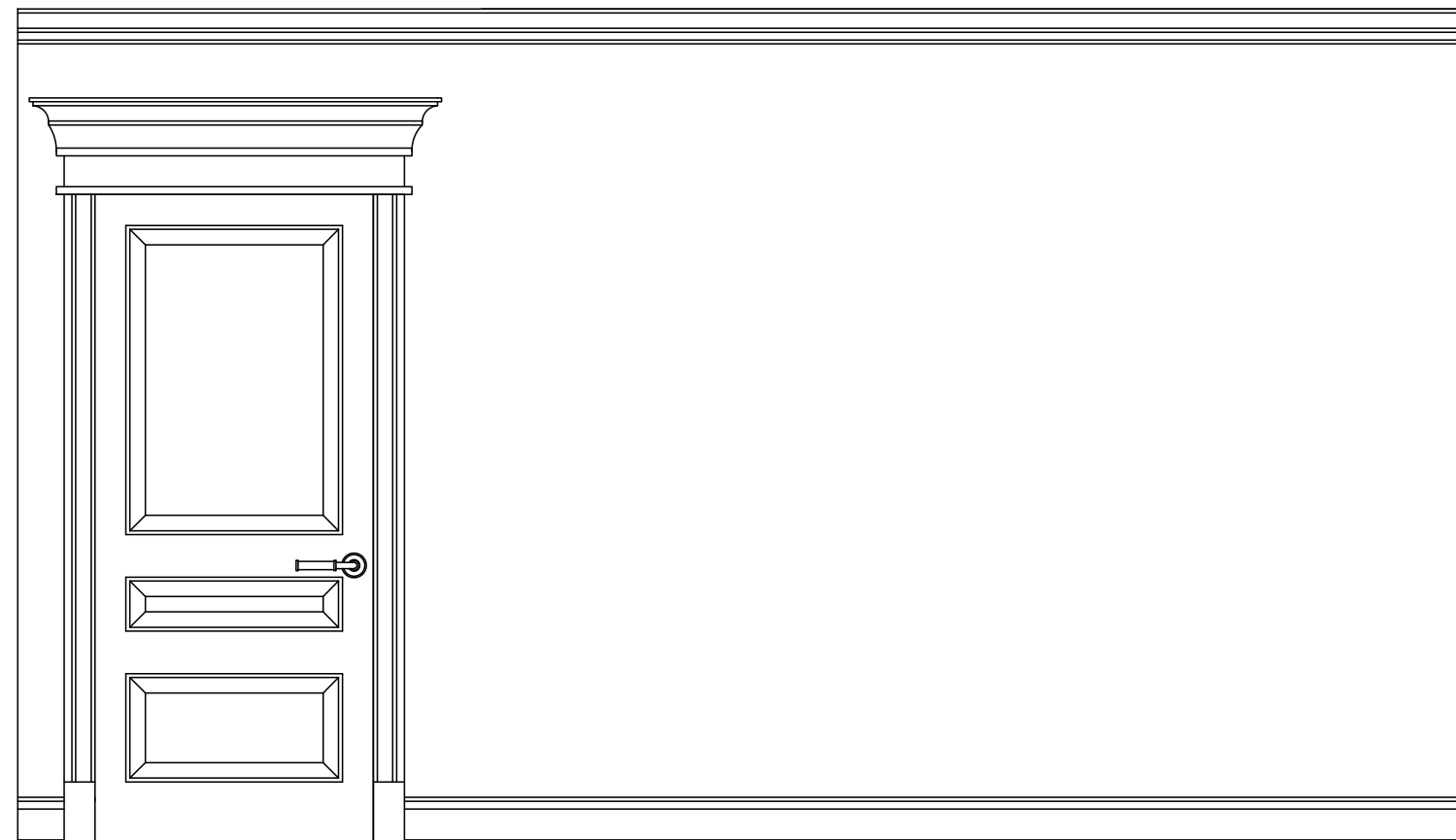
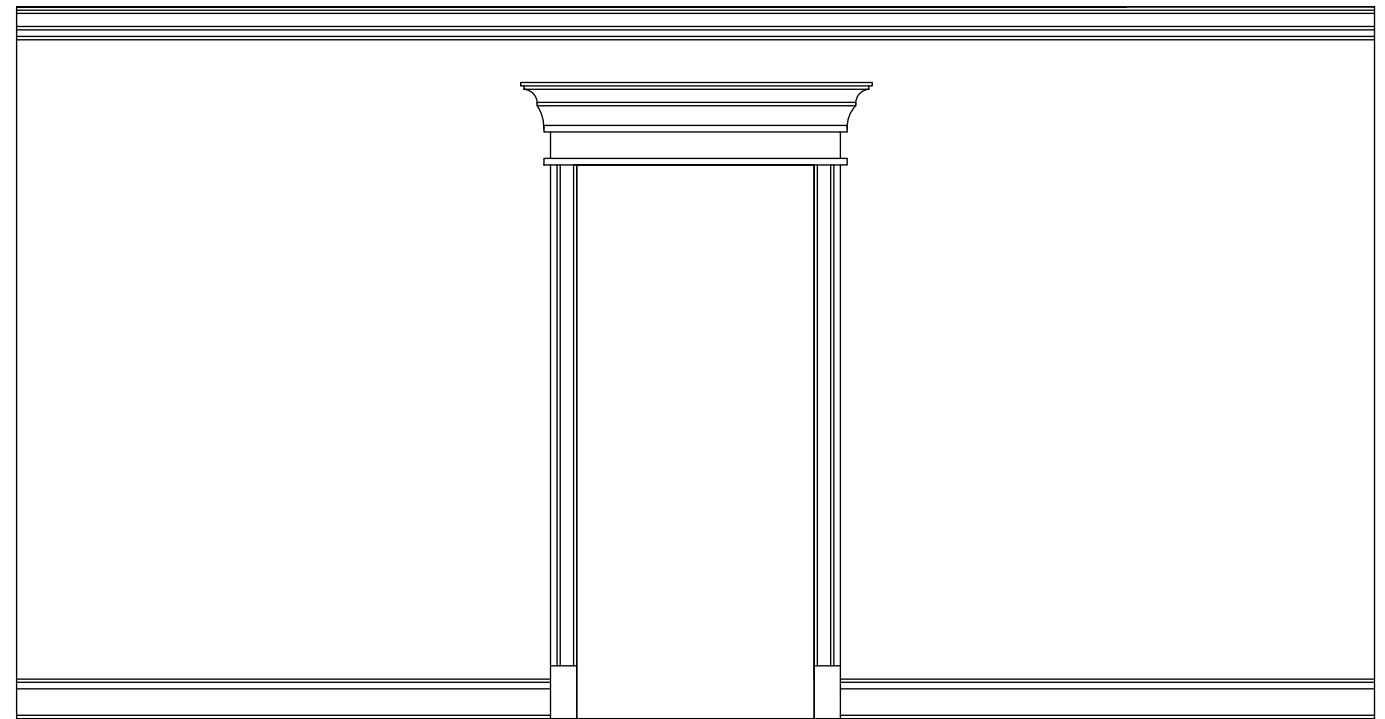
*not to scale

Elevations: Pantry/Bar Area



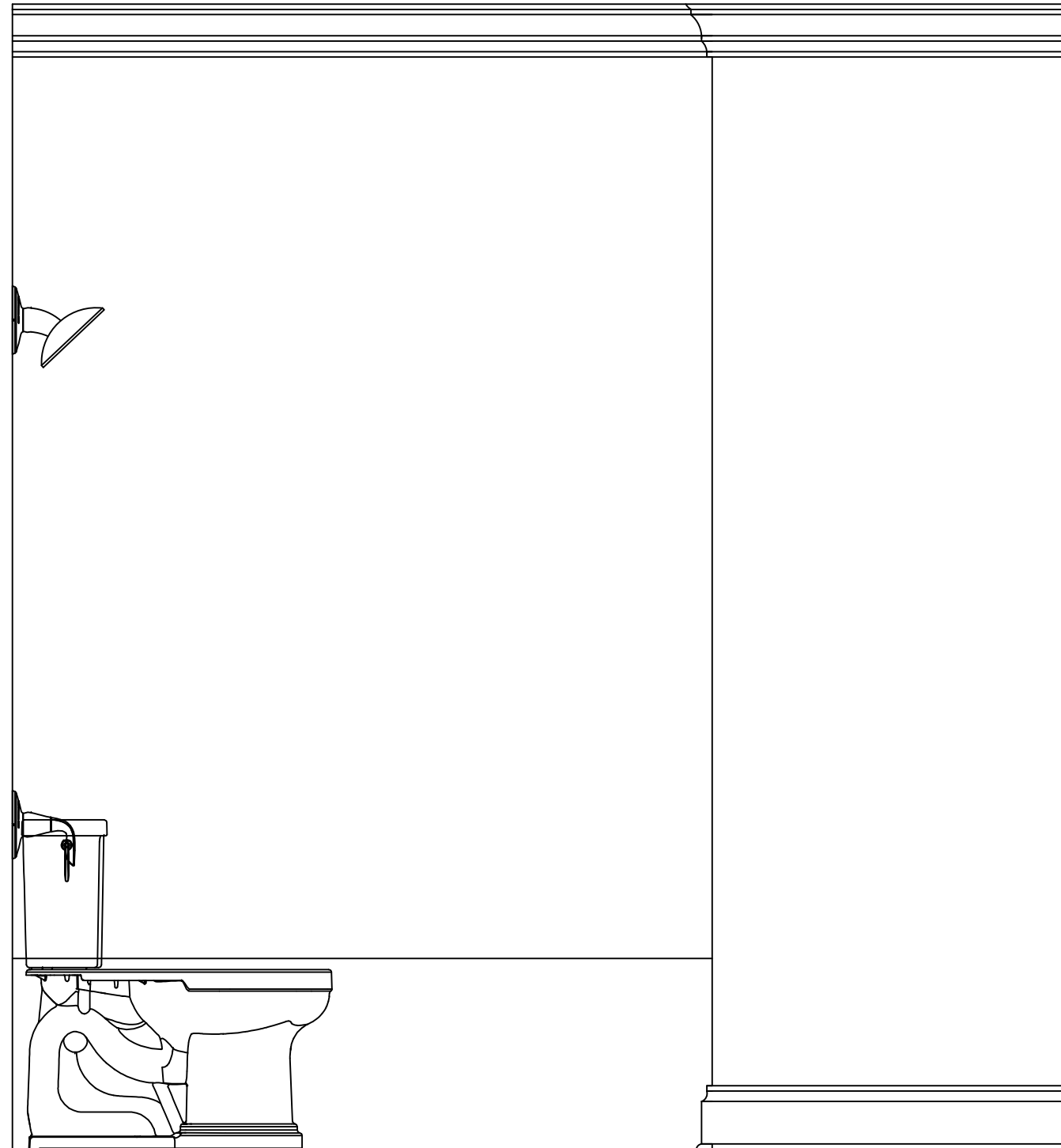
*not to scale

Elevations: Master Bedroom



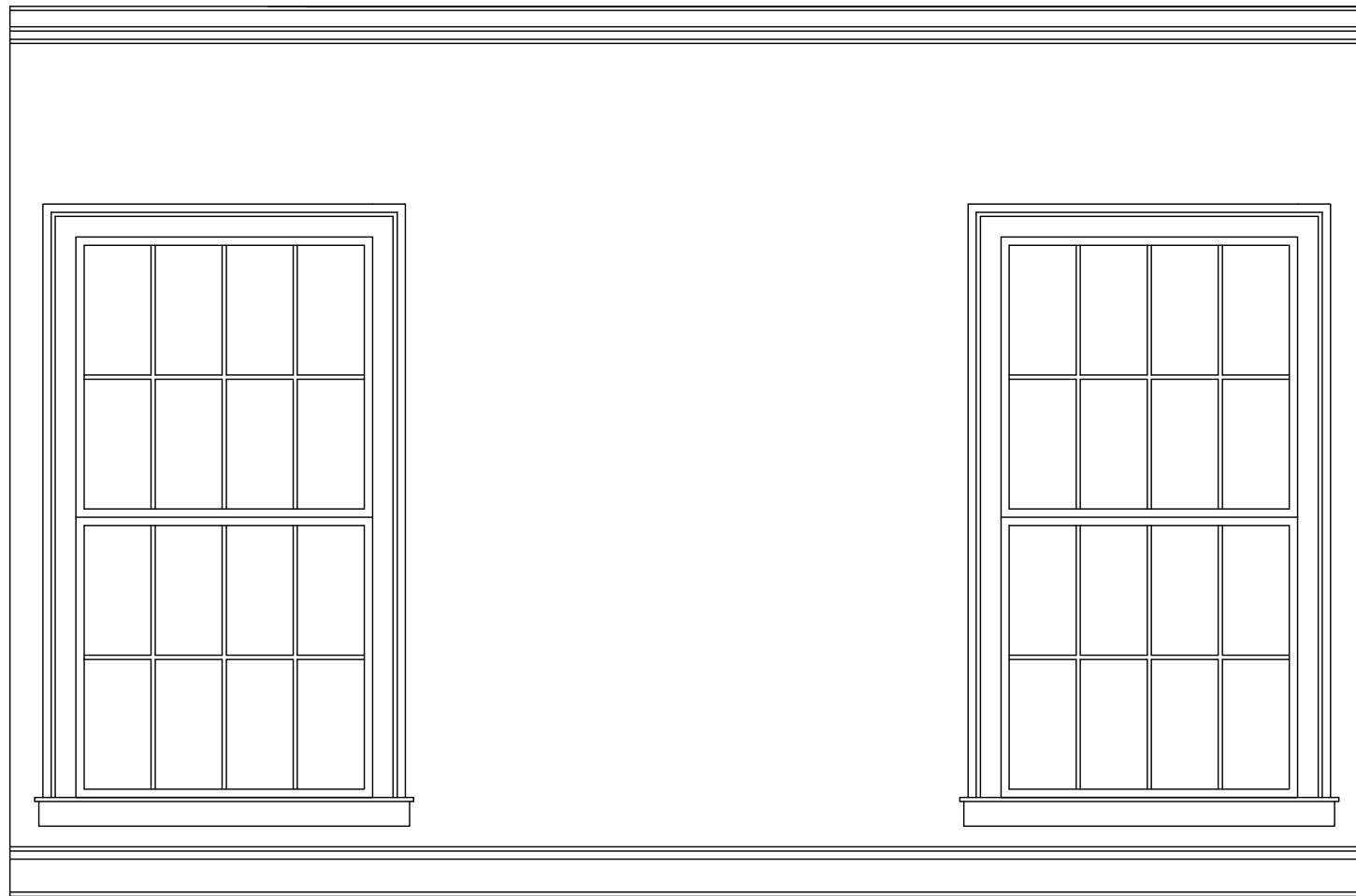
*not to scale

Elevations: Guest Bathroom



*not to scale

Elevations: Guest Bedroom



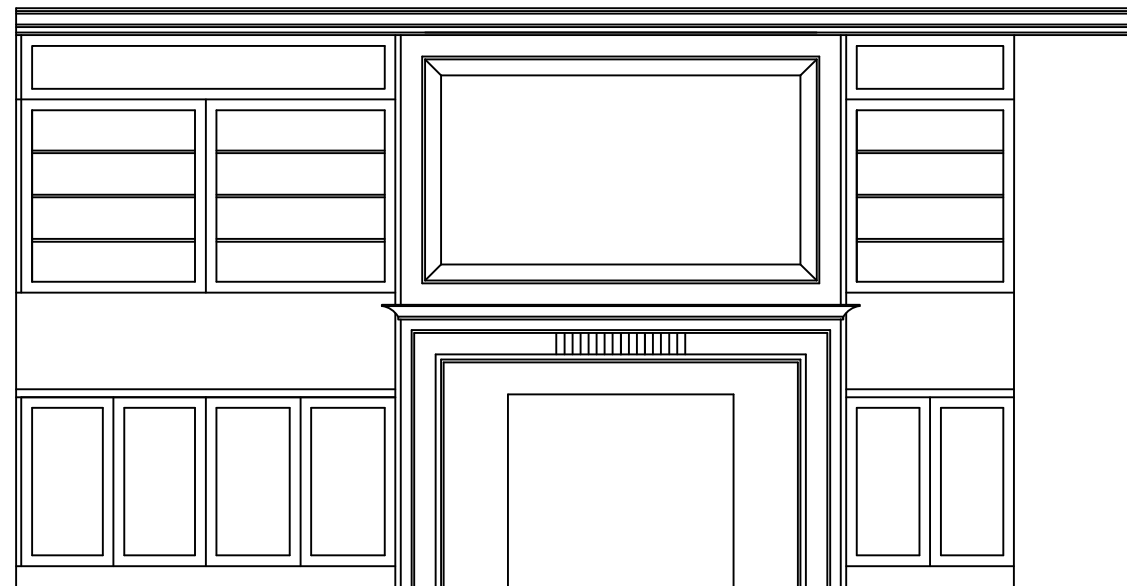
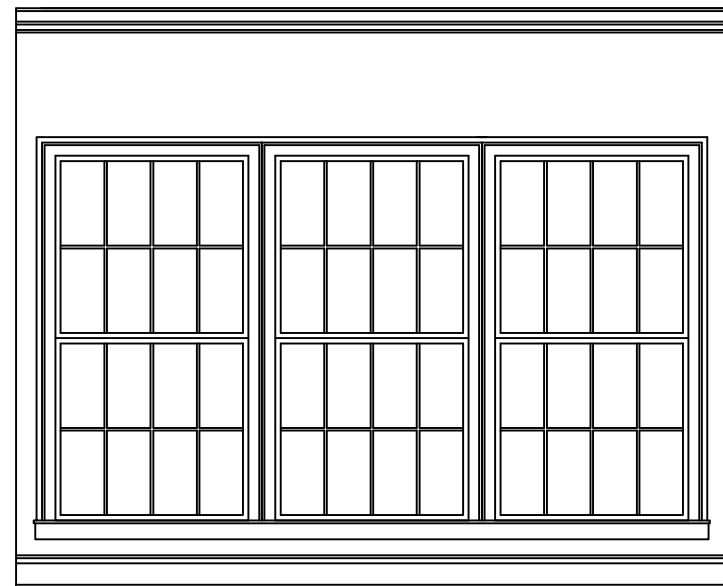
*not to scale

Elevations: Kitchen



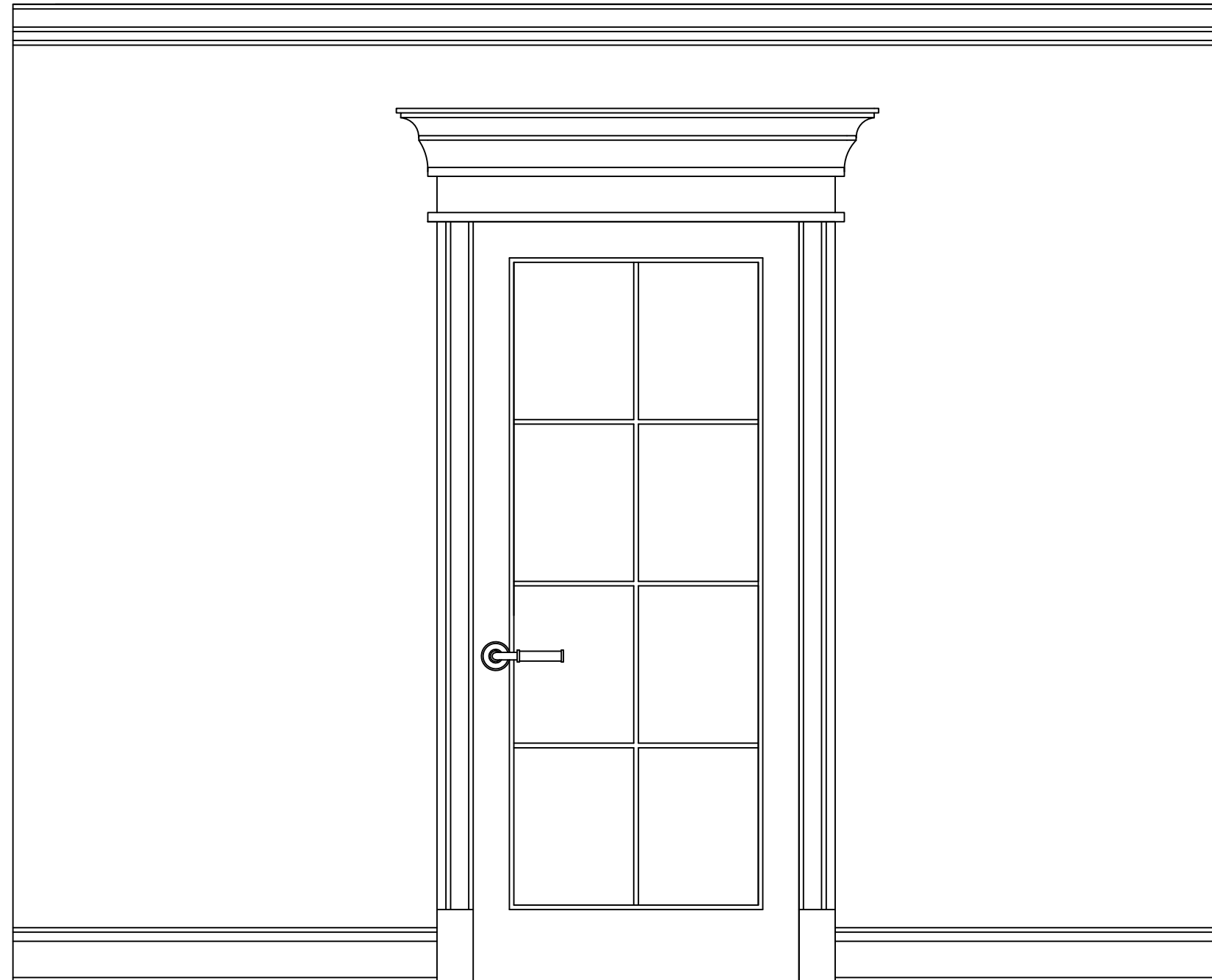
*not to scale

Elevations: Breakfast Nook/Living Room



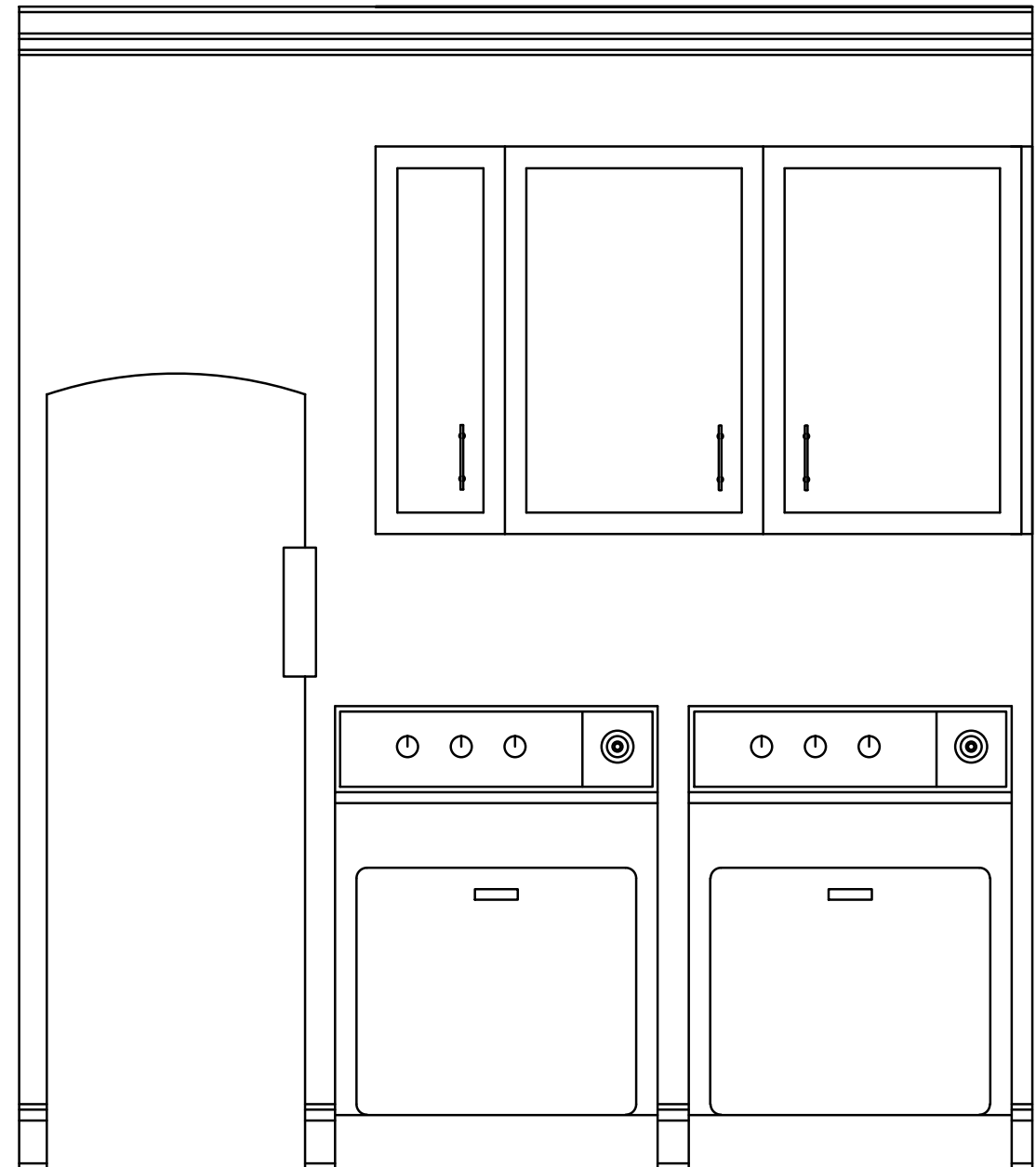
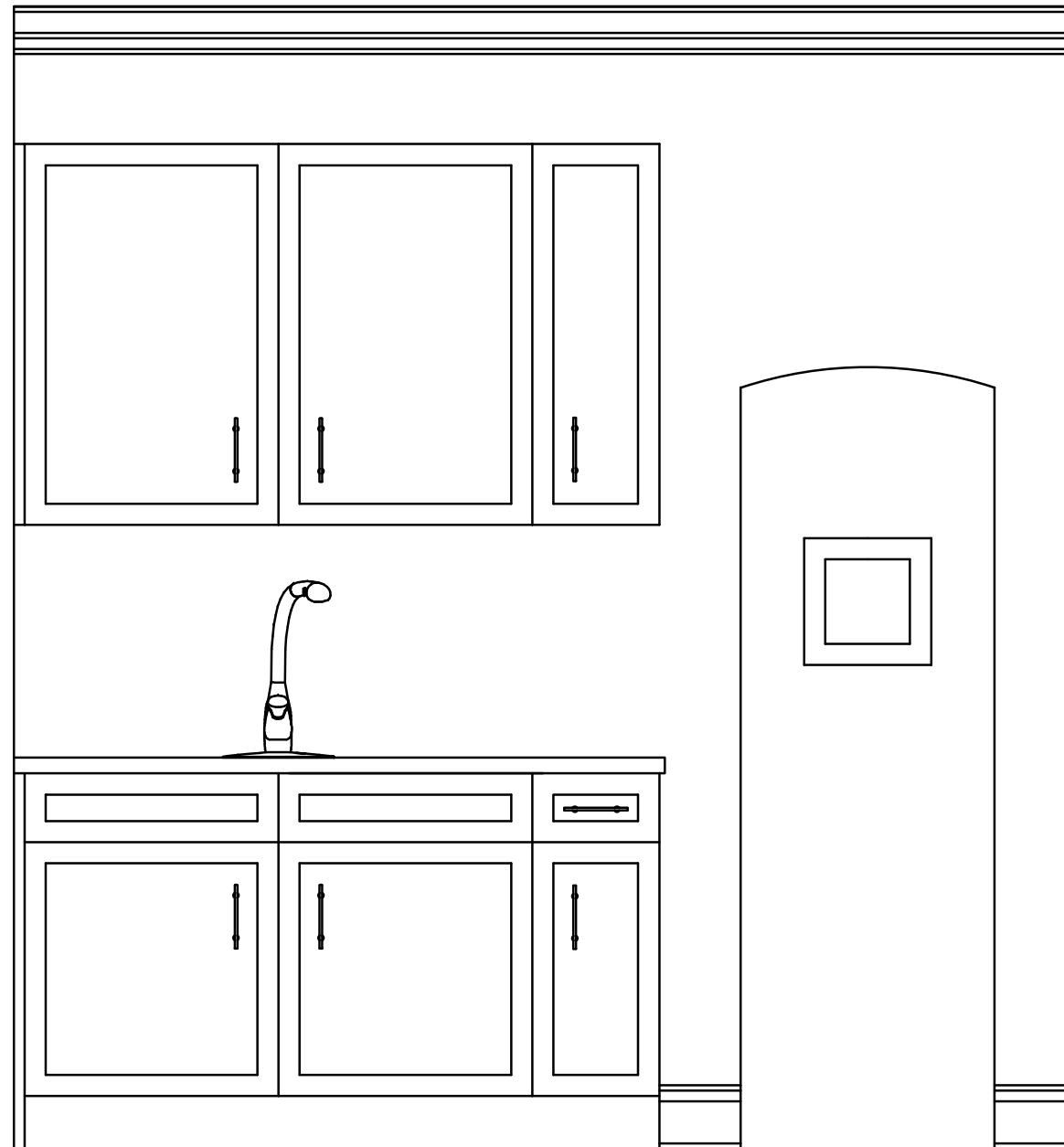
*not to scale

Elevations: Den



*not to scale

Elevations: Utilities



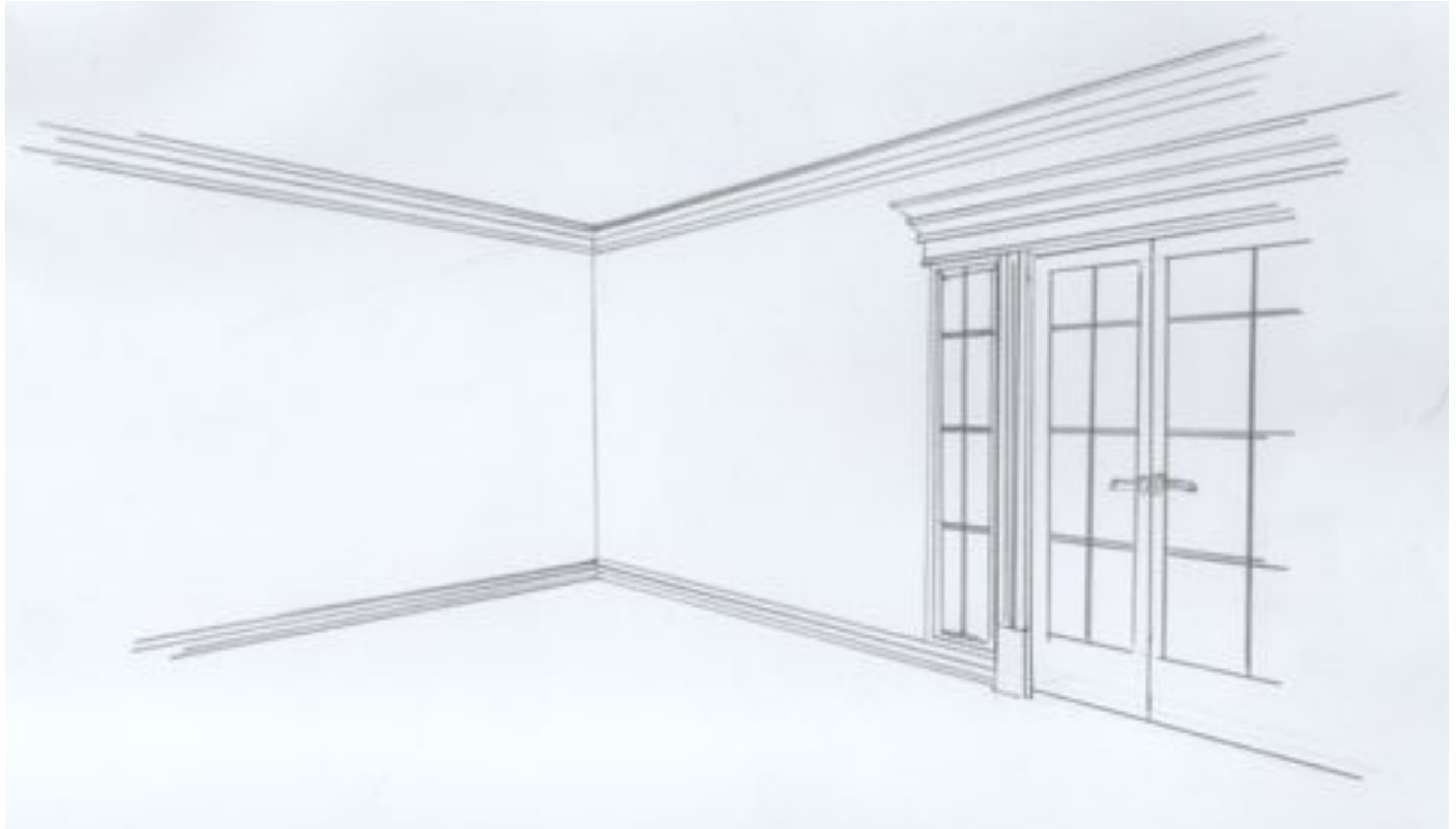
*not to scale

Perspective: Living Room



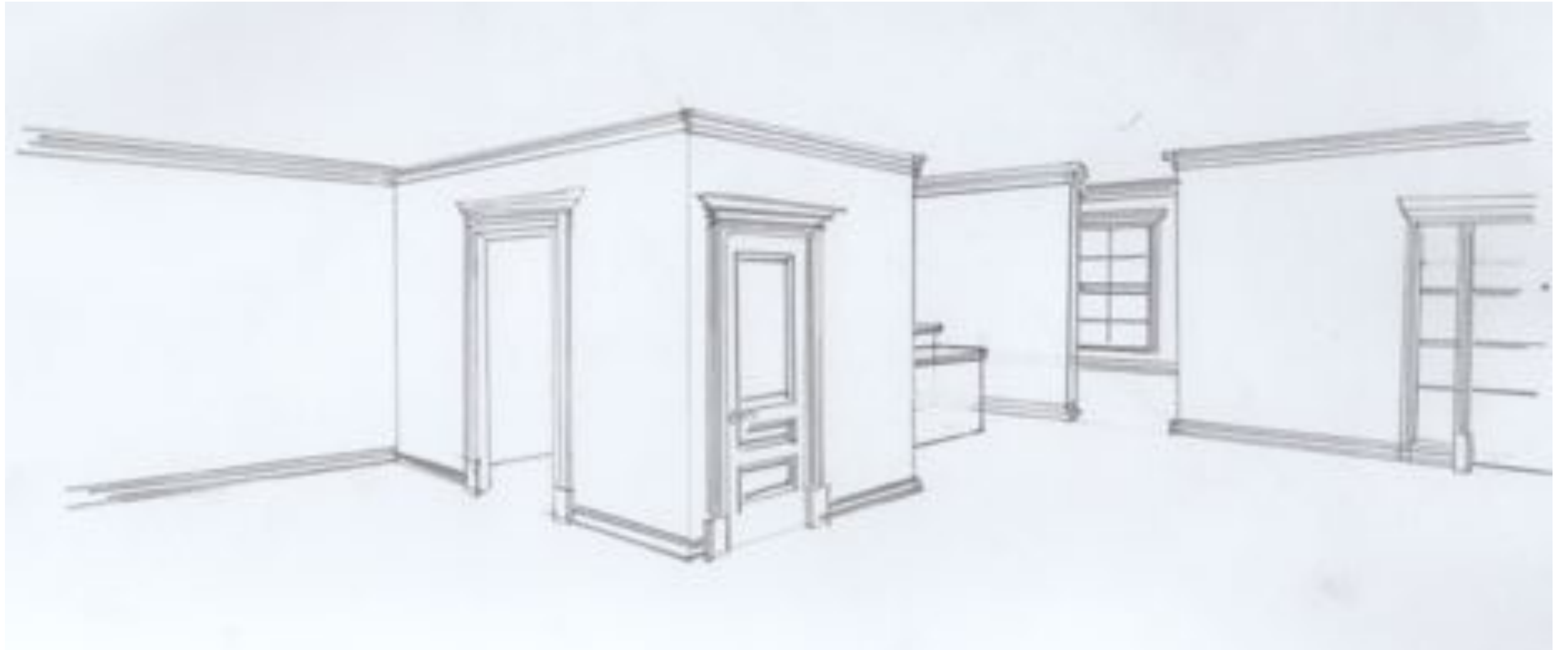
*not to scale

Perspective: Bedroom



*not to scale

Perspective: Entry Way



*not to scale

Architectural Finishes: Color Scheme 1



Architectural Finishes: Color Scheme 2

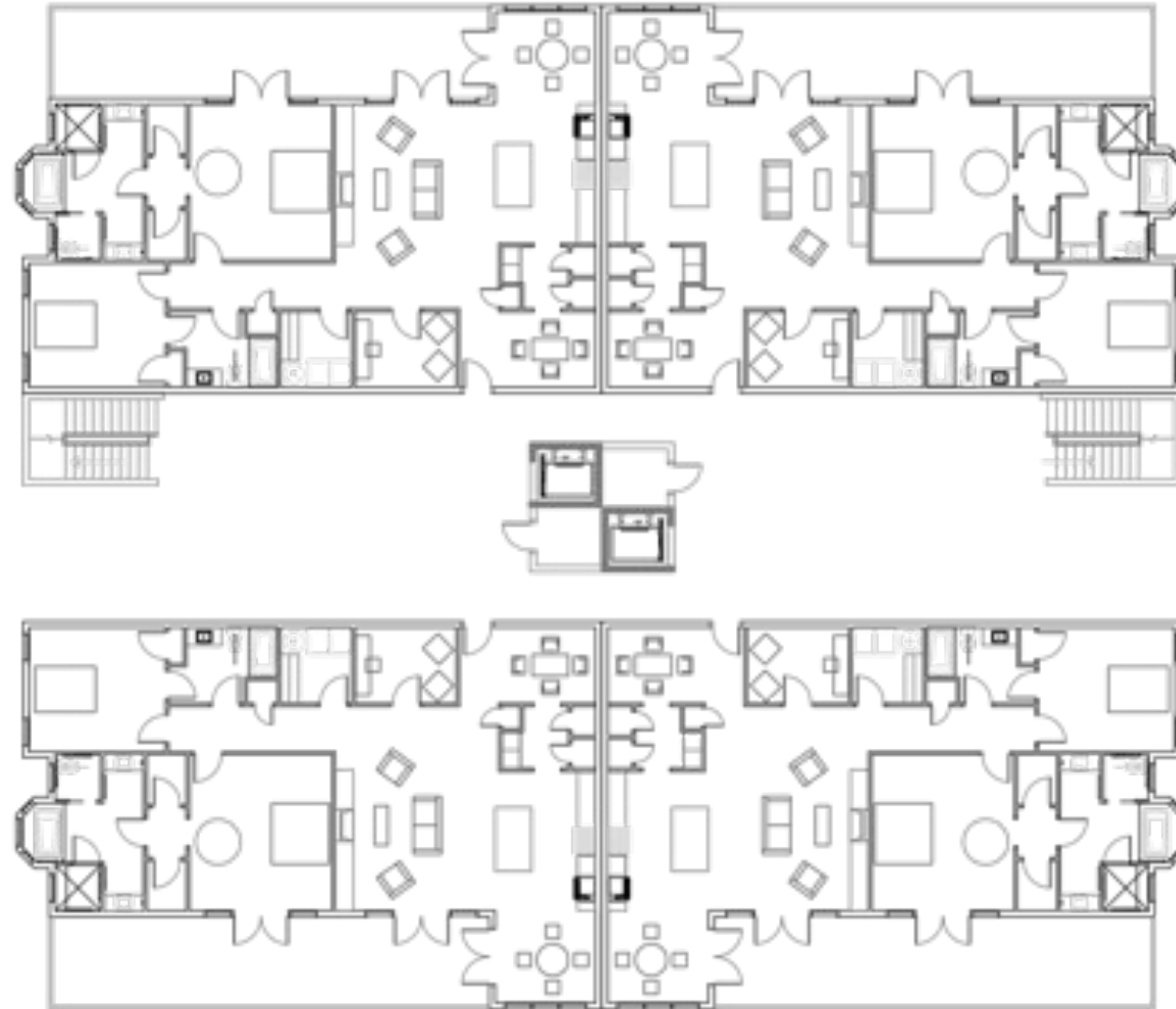


Exterior Massing Study:



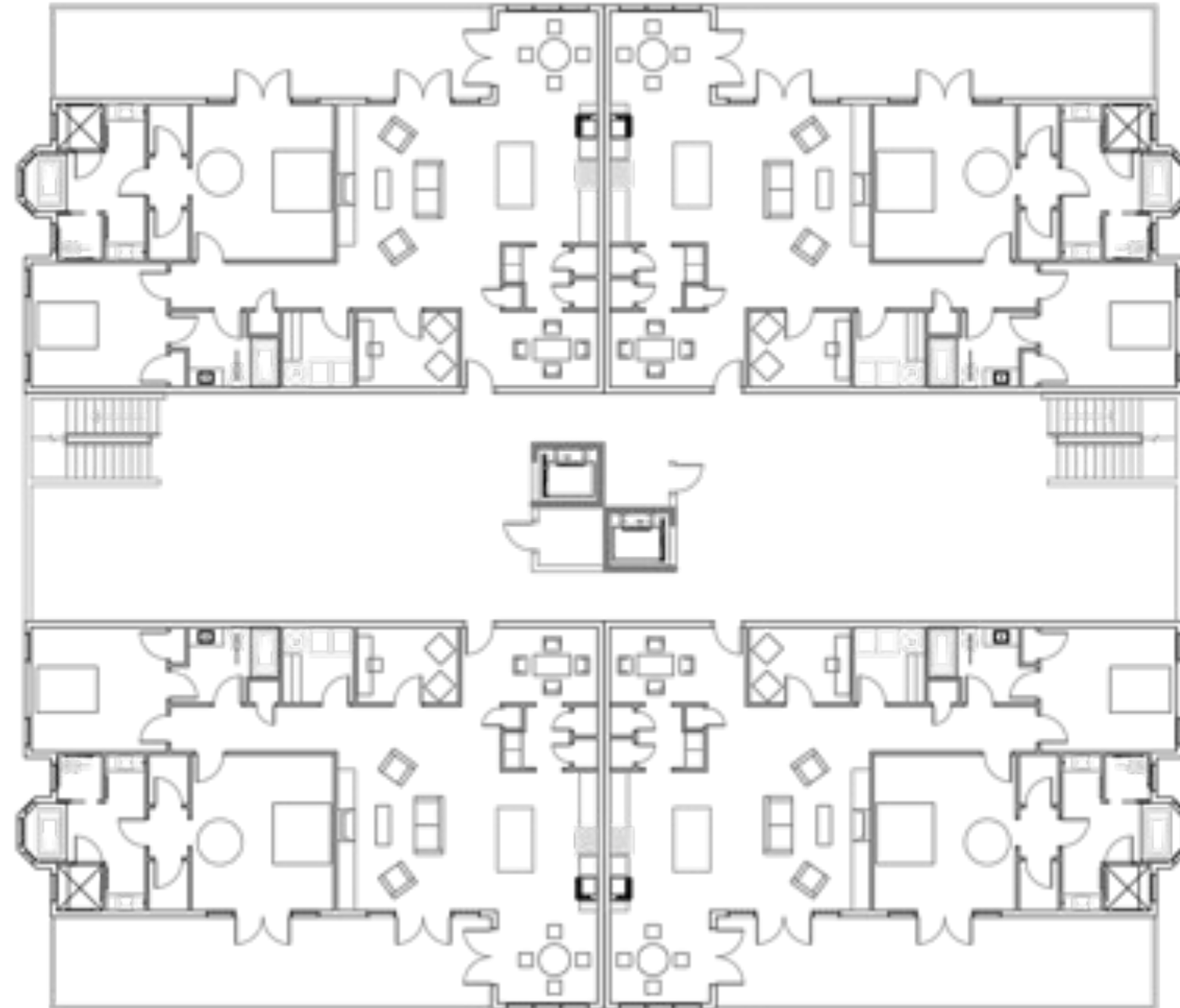
*not to scale

First Floor Building Plan:



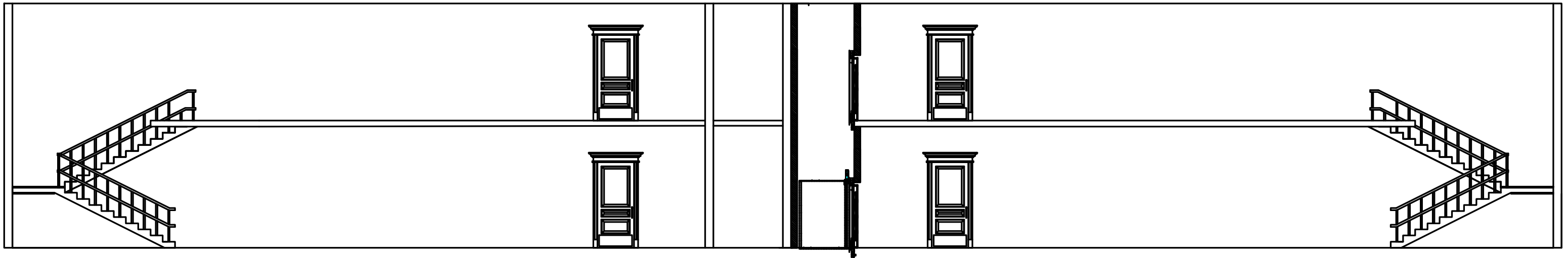
*not to scale

Second Floor Building Plan:



*not to scale

Section Cut Detailing Stairs:

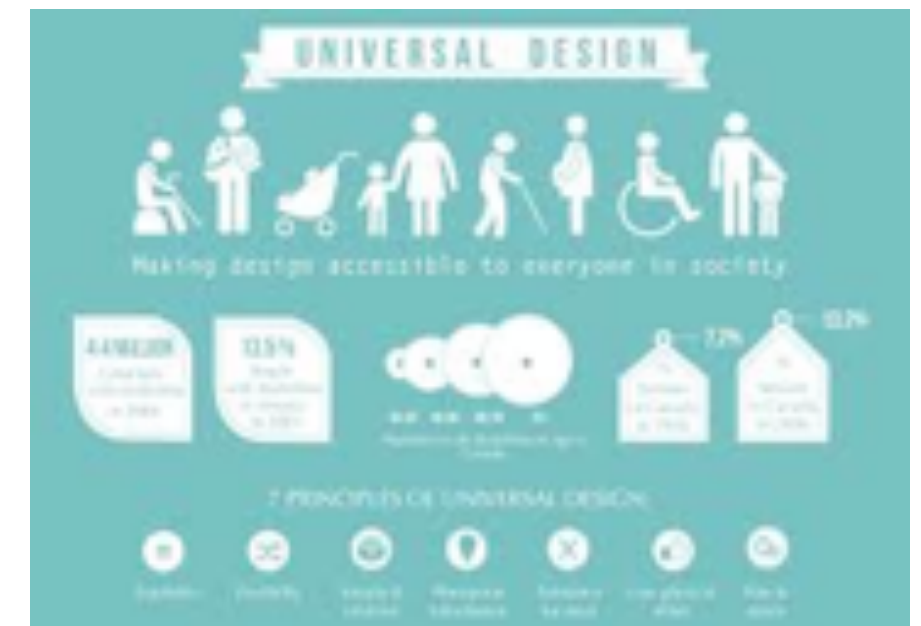


*not to scale

Universal Design Strategies:

- **The space will include:**

- 36" door opening for wheel chairs
- 18" on pull sides of doors for easy open for client in wheelchair
- Circulation paths of 42" minimum for open space for a wheelchair to move around
- Clear floor space with contrasting walls and floors to help distinguish spaces with poor vision
- 5' turning radius in bathrooms, bedrooms, kitchen and hallways for easy turn around for a wheelchair
- Variety of lighting sources to provide different forms of lighting for poor vision
- Lever door handles for easy access



Historical Precedents:



- The styles seen in the space will include British Ties mixed with Midcentury Modern
 - The British Ties will include:
 - Wallpaper
 - Decorative but uncluttered
 - Floors kept plain to contrast decorative features
 - Exotic woods used in furniture and architecture
 - The Midcentury Modern will include:
 - Beauty is the product of function
 - Mixing up and combining materials
 - Bold patterns and heavy textured fabrics
 - Graphic wallpaper
 - Colors schemes warm and earthy
 - Iconic pieces

Theories of Human Behavior:

- **The space will be designed considering these factors of adults over 55:**
 - Majority of the population don't want to see grab bars and other factors that show age in the interiors
 - Mental disorders become more prevalent around 55 and older
 - Outdoor activities are much desired by over 55 seniors
 - Adults over 55 tend to enjoy social activities and gatherings
 - Amenities are very important to seniors over 55

