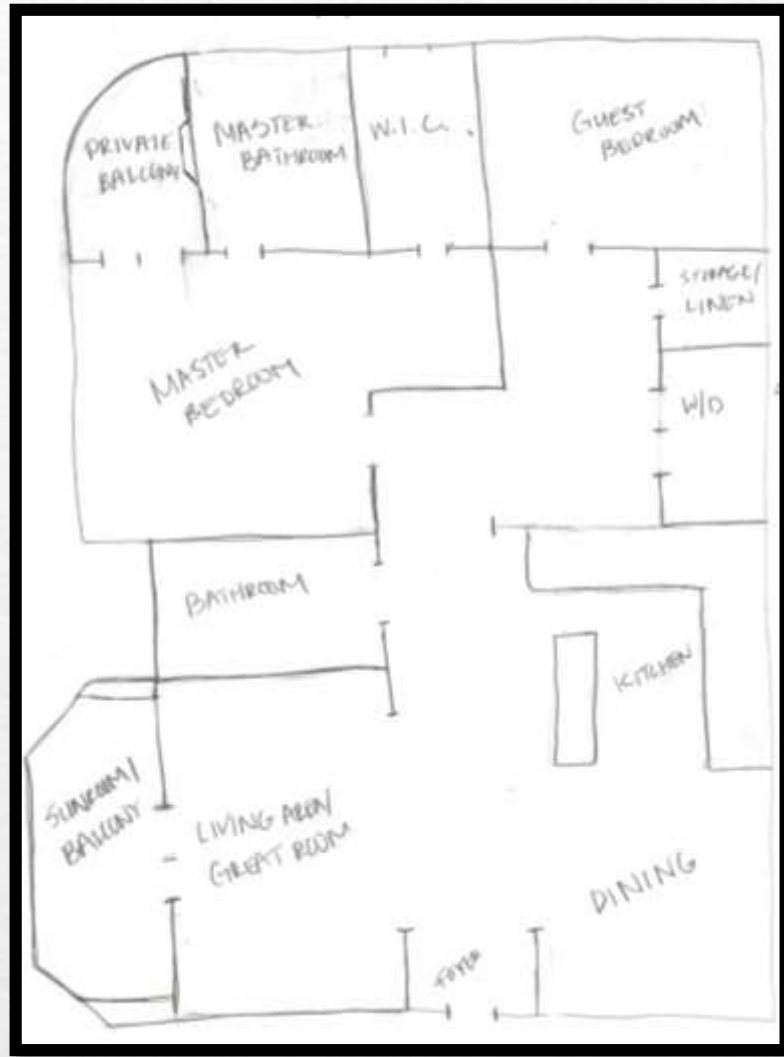
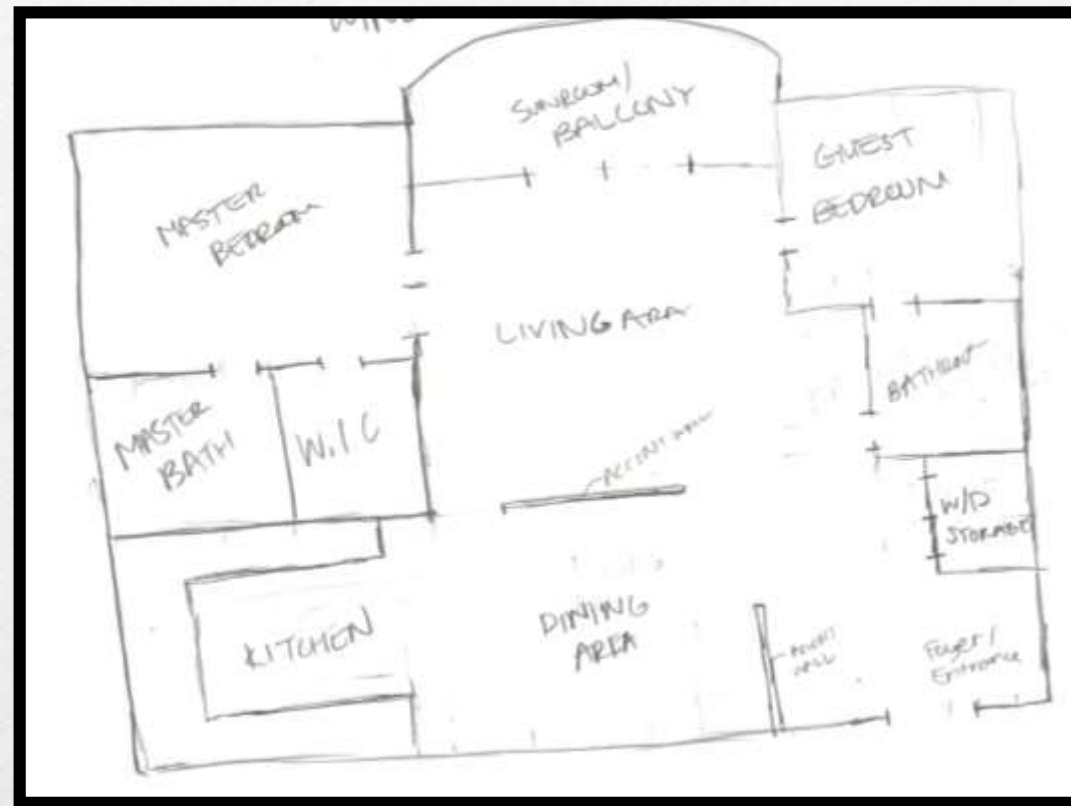


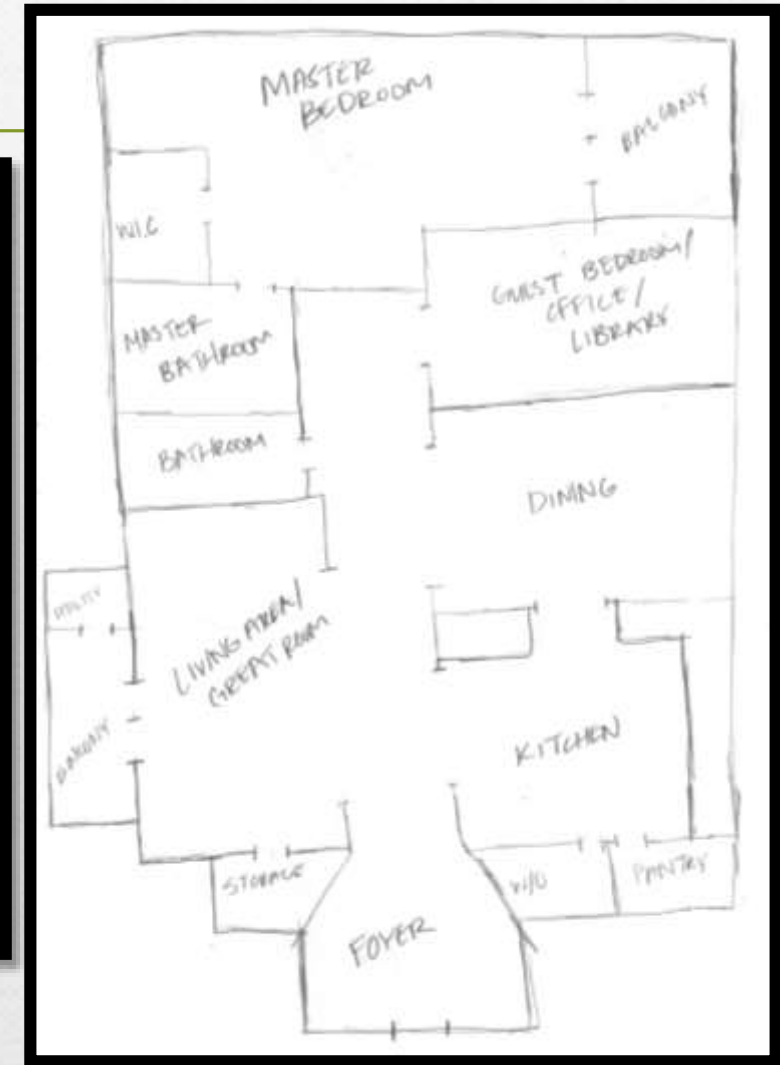
# Potential Floorplans



Option 1



Option 2



Option 3

Not to Scale

# Perspectives

*Foyer*

*Great Room*



*Not to Scale*

# Perspectives

*Kitchen*



*Washer Dryer Area*



*Not to Scale*

# Perspectives

*Guest Bedroom*

*Walk-in Closet*



*Not to Scale*

# Perspectives

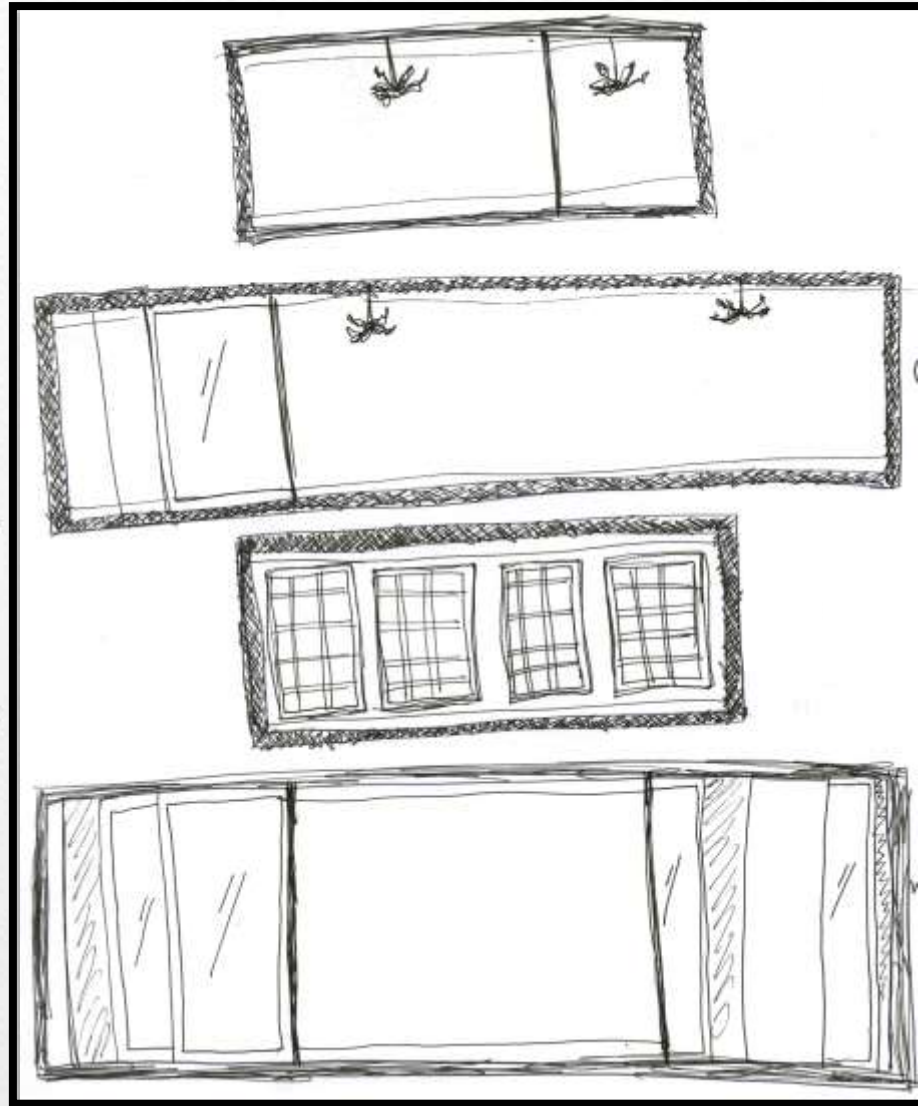
*Master Bedroom Seating*

*Master Bathroom*

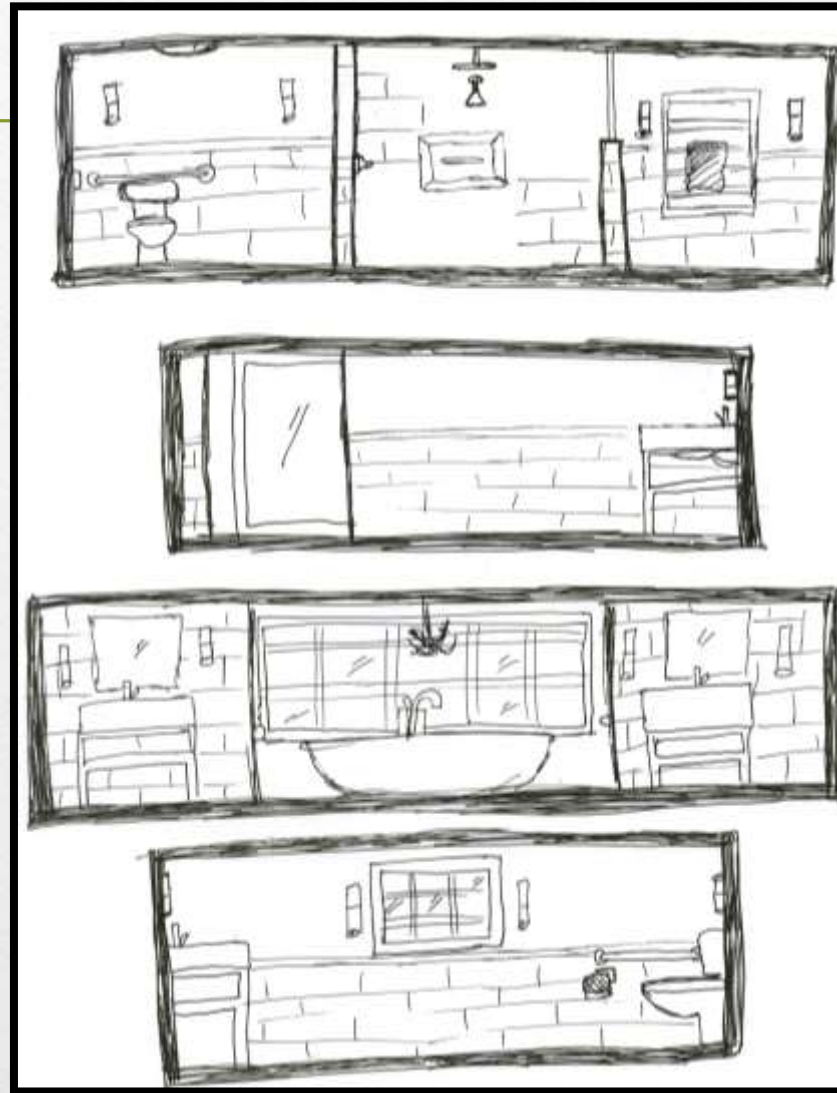


*Not to Scale*

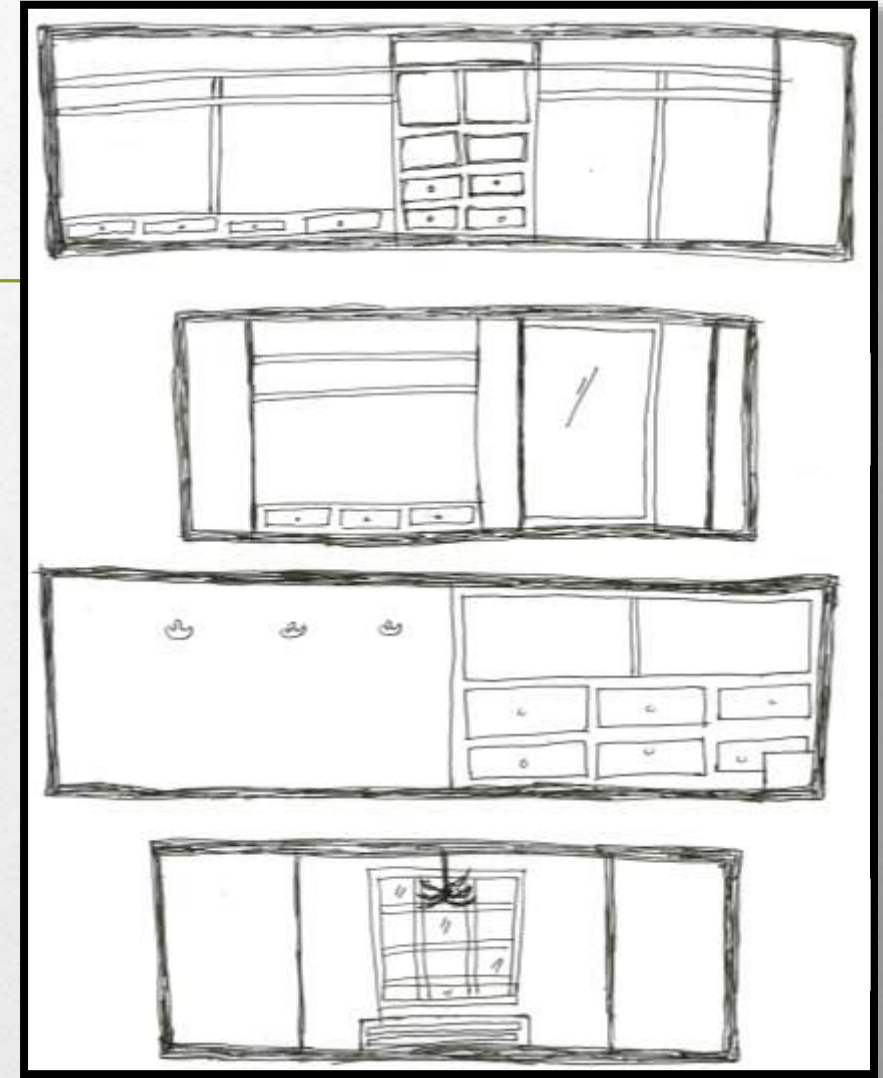
# Elevations



*Master Bedroom*



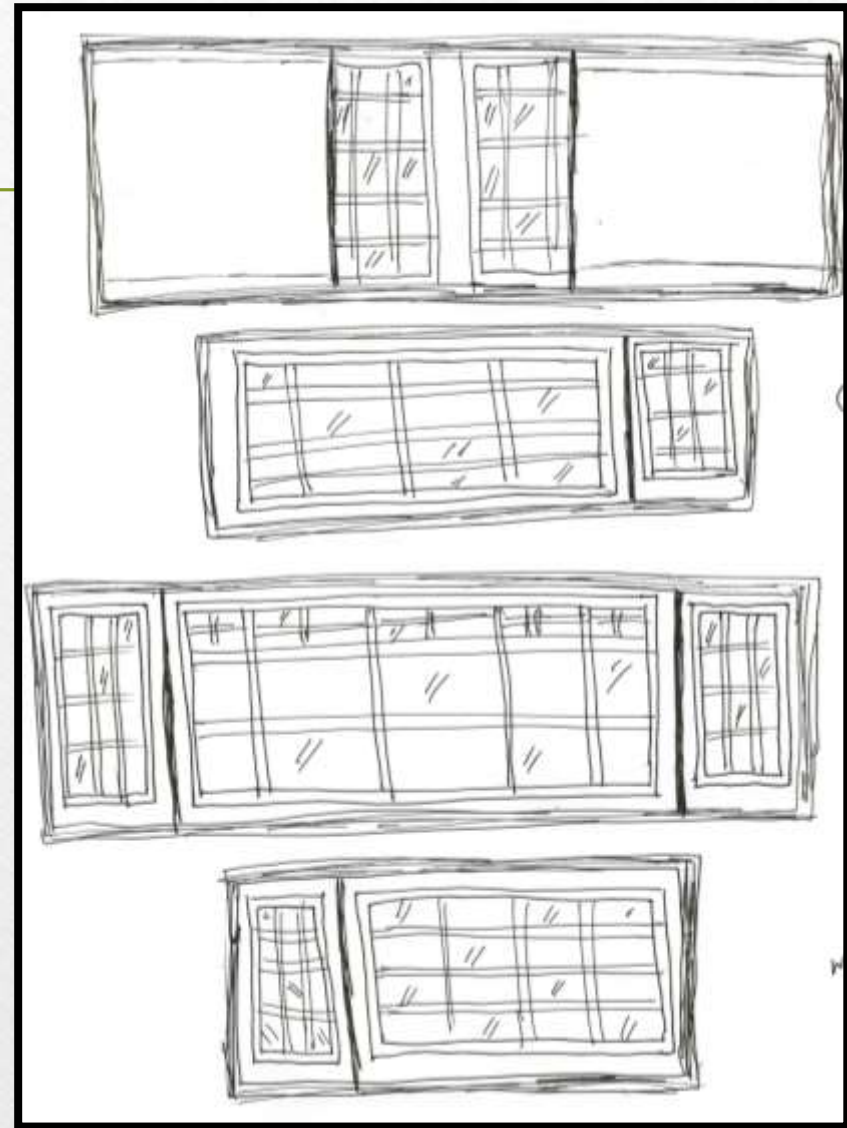
*Master Bathroom*



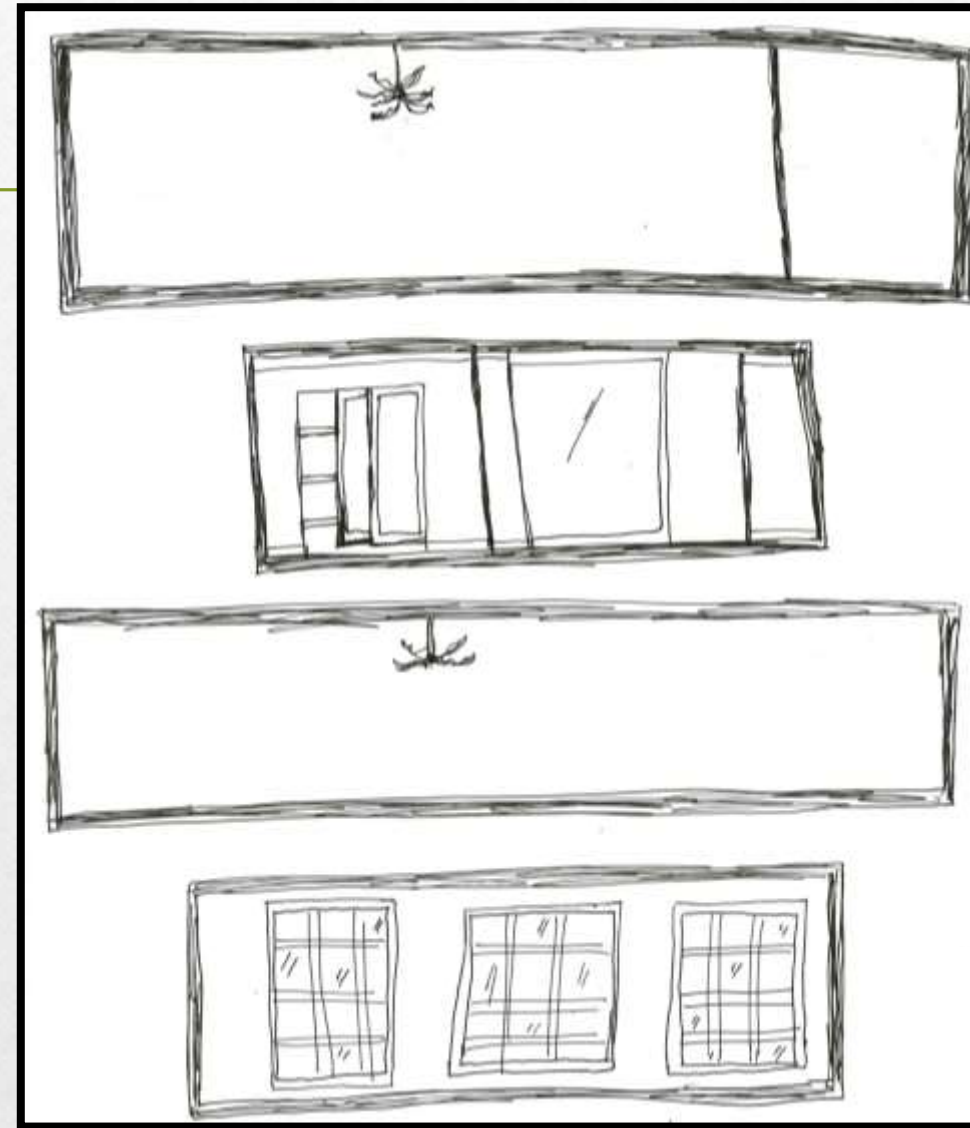
*Master W.C.P.*

*Not to Scale*

# Elevations



*Sunroom*



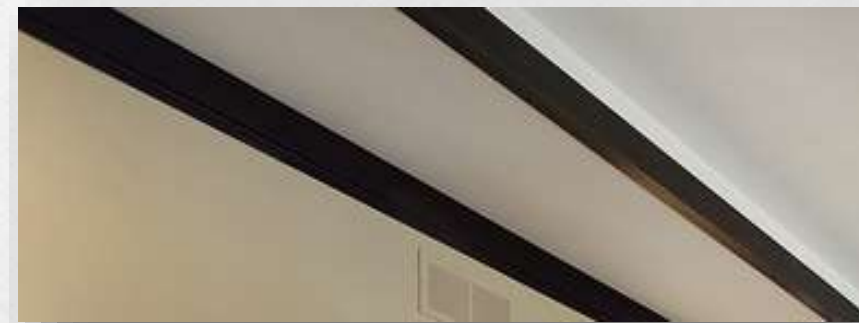
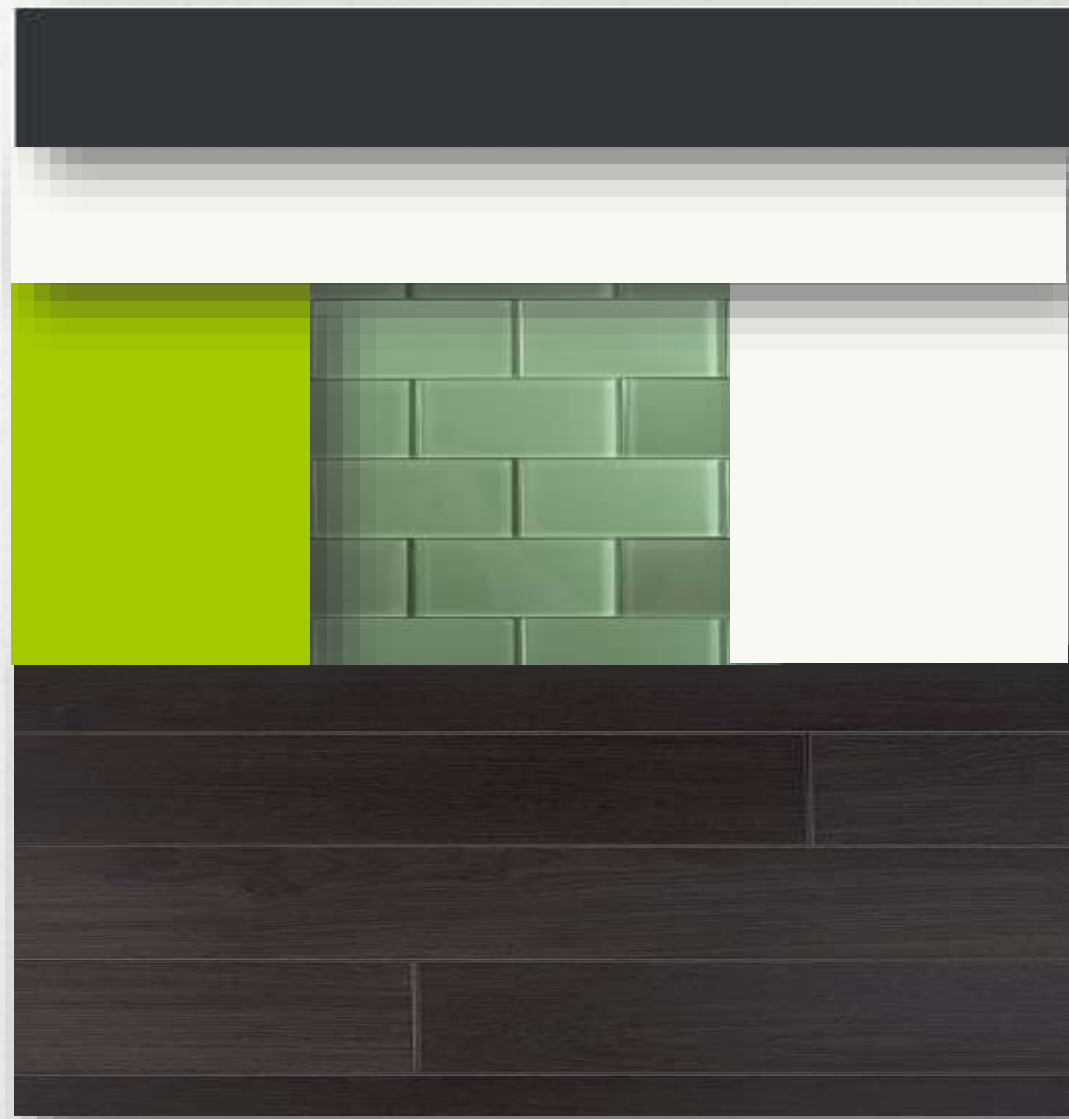
*Guest Bedroom*

*Not to Scale*

# Architectural Finishes

Option 1

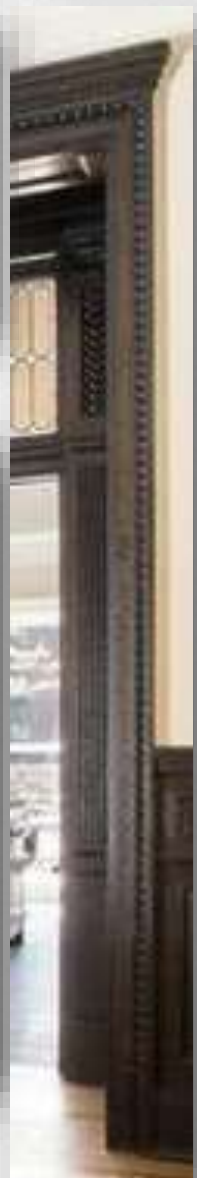
Upgrades



Molding



Paneling

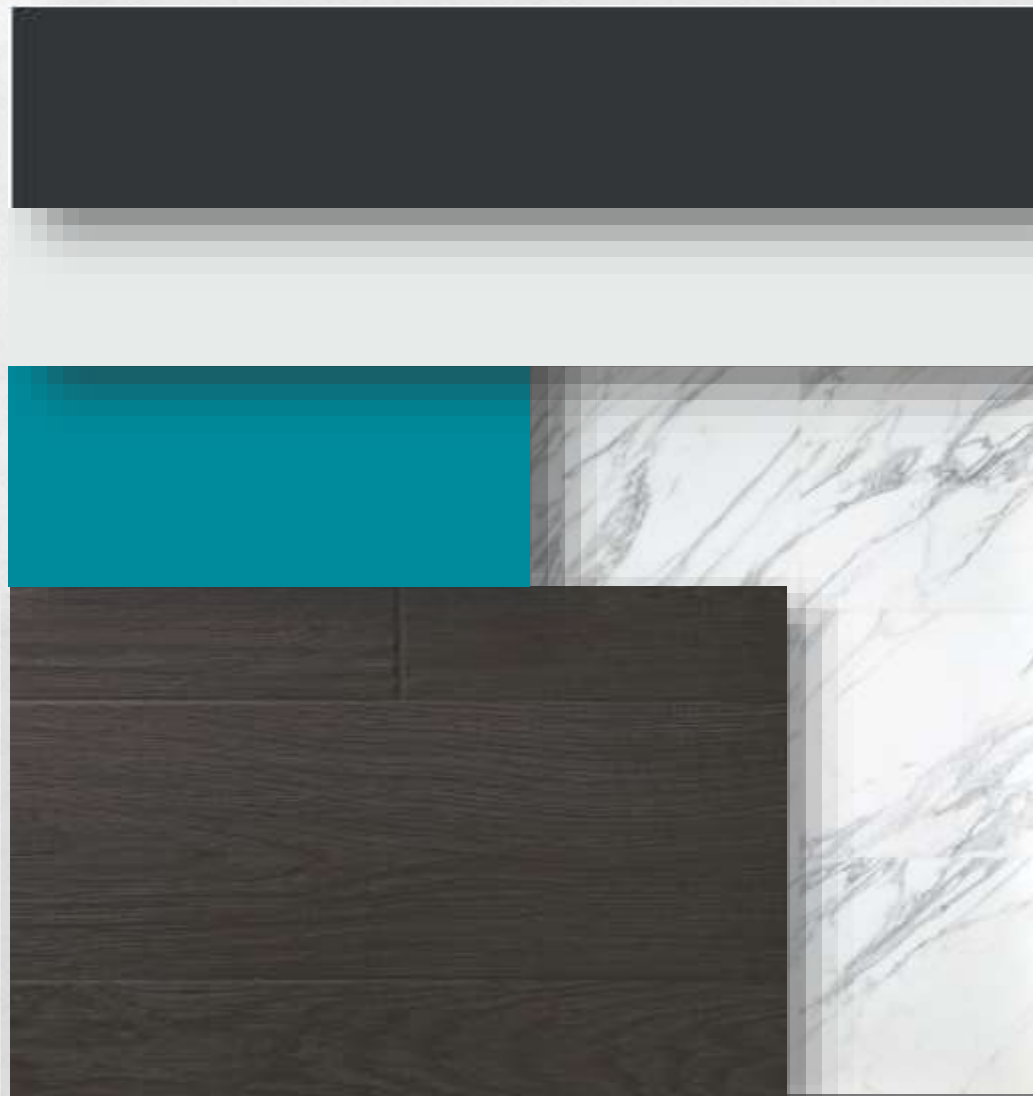




# Architectural Finishes

Option 2

Upgrades



Molding



Paneling

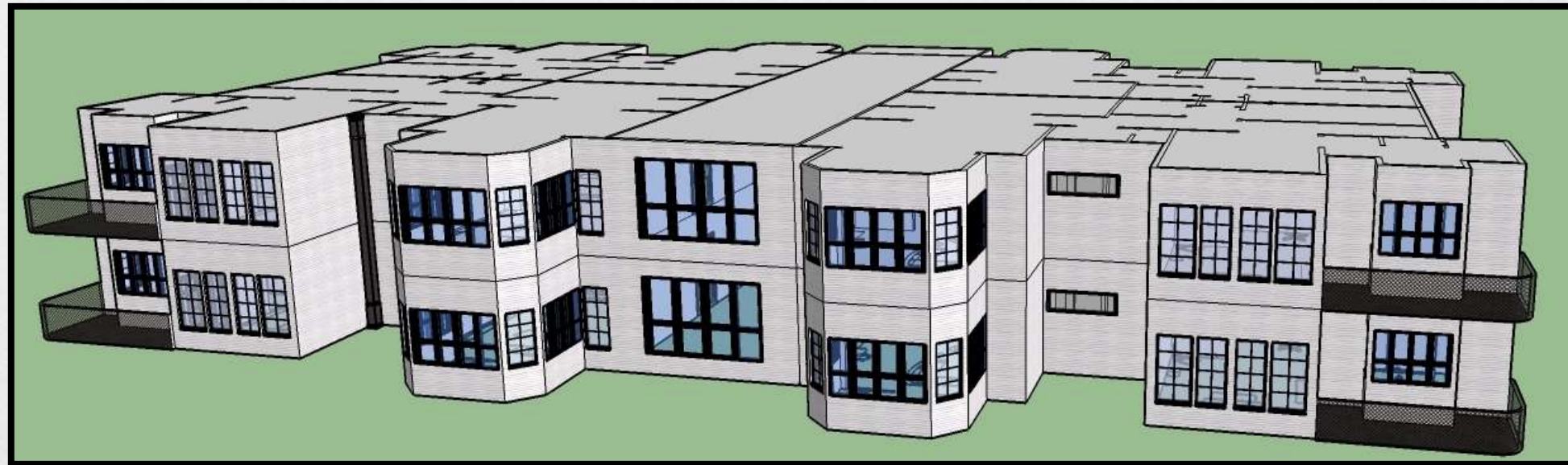
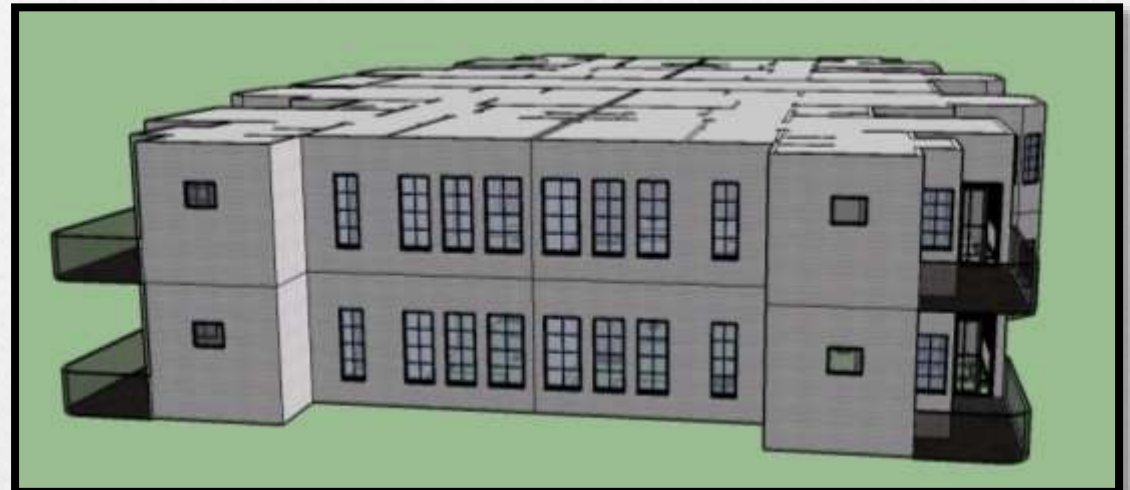


*Exterior  
Mass  
Study*



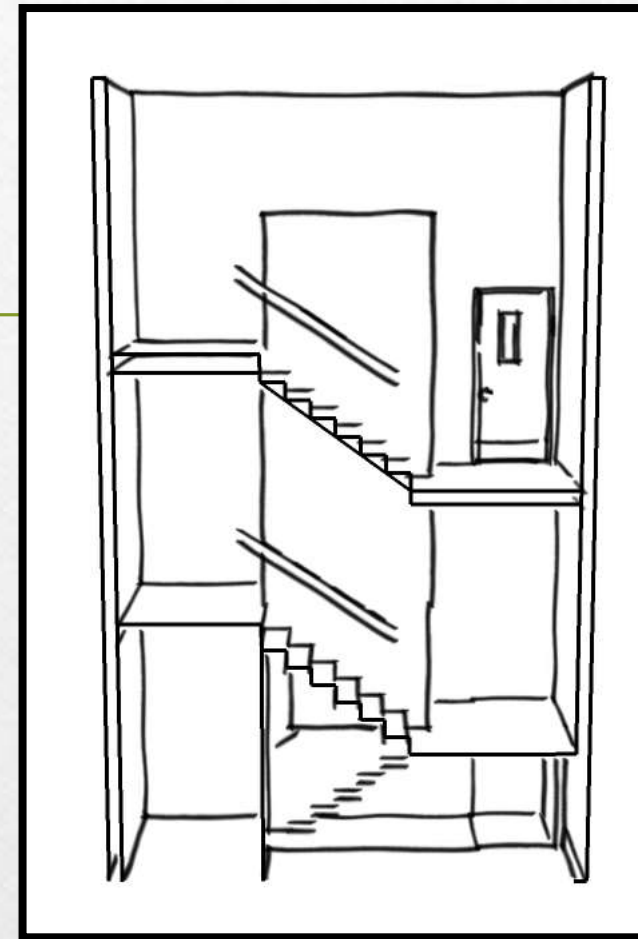
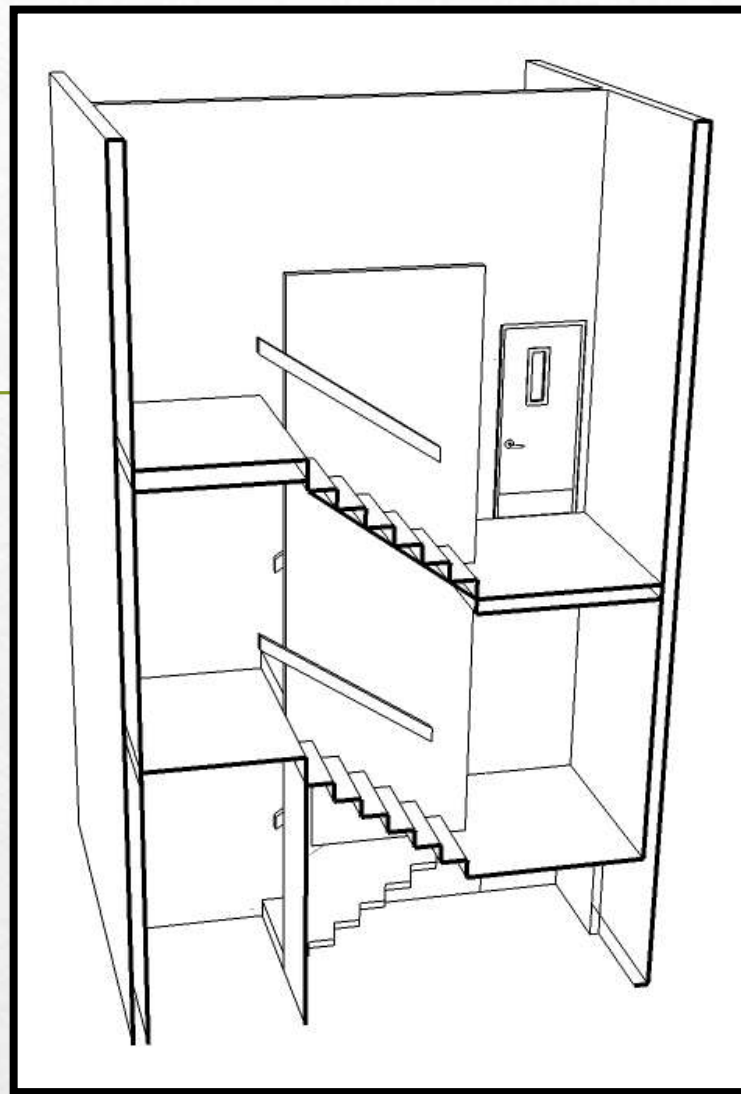
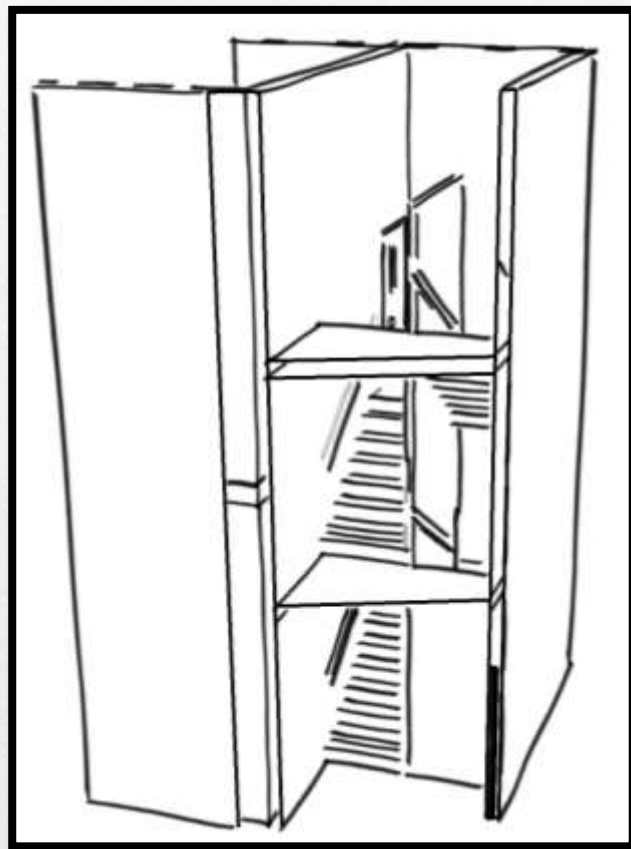
*Not to Scale*

*Exterior  
Mass  
Study*



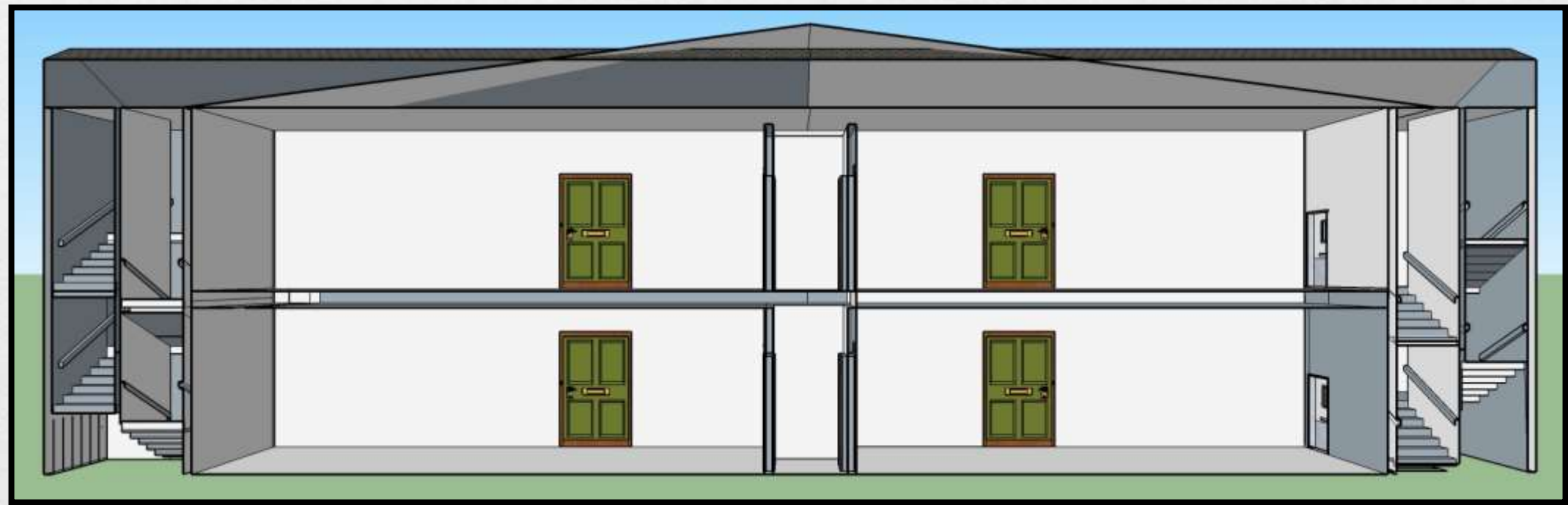
*Not to Scale*

# *Exit Stairway Perspectives*



*Not to Scale*

*Exit  
Stair  
Section*



*Not to Scale*

# Historical Precedent

## *"Classical Minimalism"*

- Neutral color base with pops of bright colors
- Crown molding
- Simple wall paneling
- Geometric shapes (squares, round, rectangles)
- Simple, but captivating
- Uncluttered
- Dark wood floors with contrasting wall color
- Clean surfaces
- "Less is more"



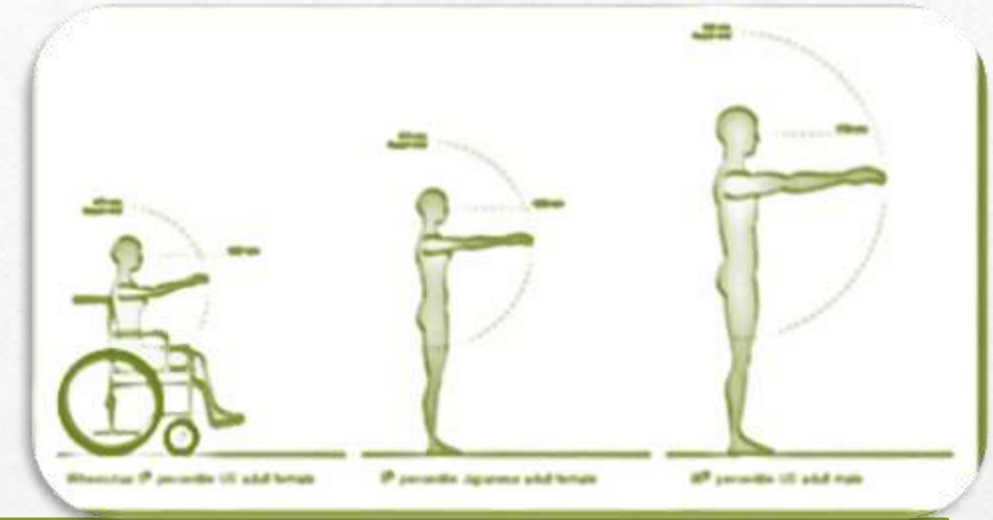
# Universal Design



- Clearance through out floor plan
- 36" wide pocket doors in unit
- Flush transition flooring and thresholds
- Built-in blocking for grab bar installments
- Spacious U-shaped kitchen with 5' turning diameter
  - Accessible appliances, cabinets and furniture
- Walk-in/Roll-in spaces



# Human Behavior



## *Anthropometrics*

- Proportion and size consideration in relation to furniture and finishes height
- Attention to detail and height variances geared towards old age shrinking and body changes
- Light weight furniture and finishes in relation to elderly reduced bone mass
- Non-slip finishes
- Fewer stairs
- Close to medical facilities

## *Behavior*

- Easy access to transportation
- Physical activities on sight; including facilities (ex: gym, park, trail, pool)
- Obvious reminders of aging eliminated
- Amenities relate to ALL generations
- Social gathering area onsite
- Relaxed pace environment
- Secured environment