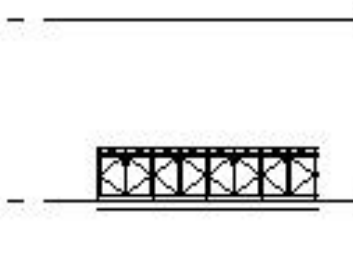
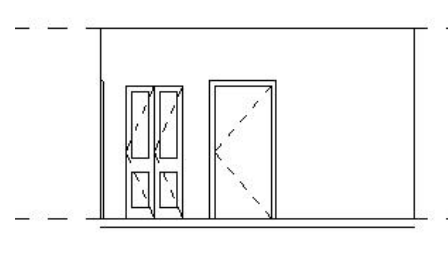
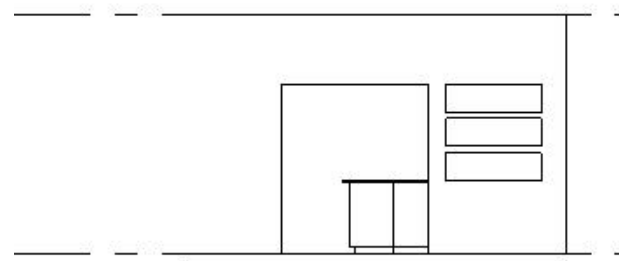
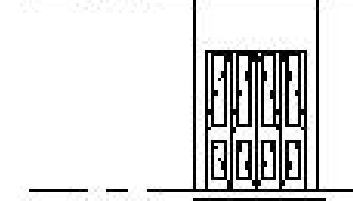
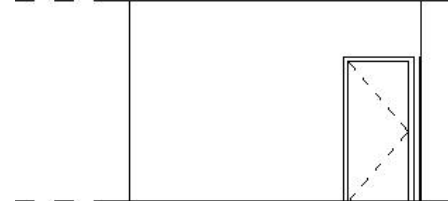
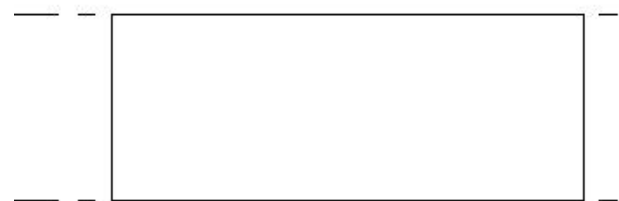
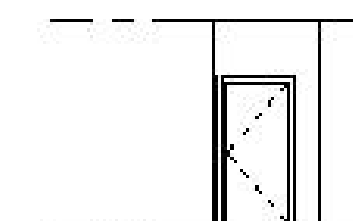
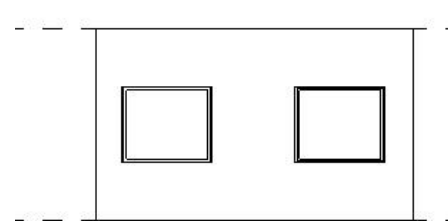
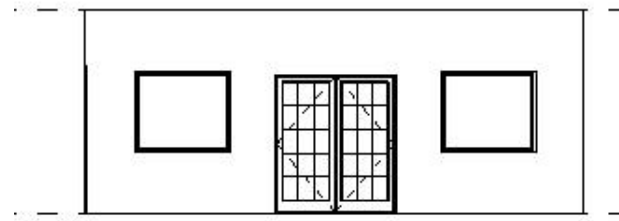
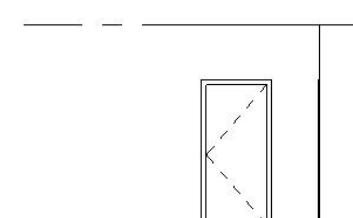
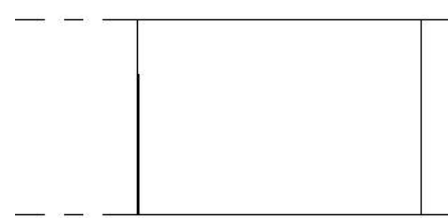
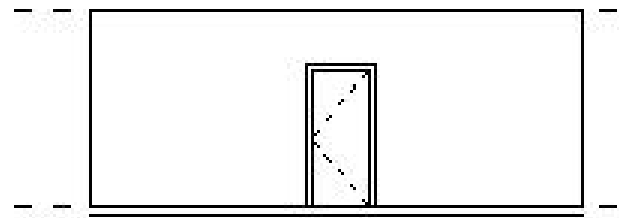


# ELEVATIONS

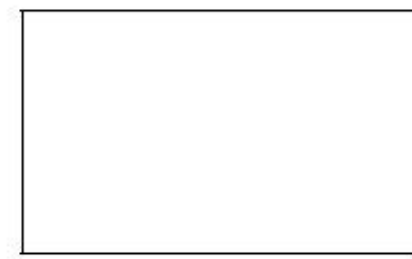
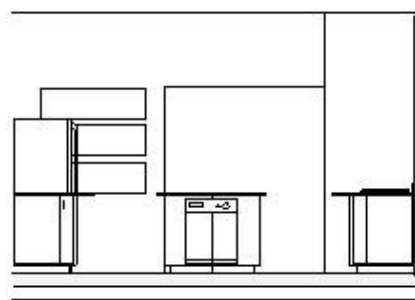
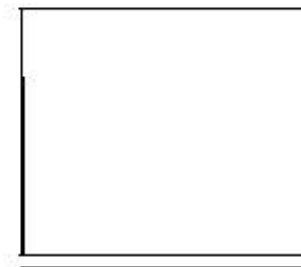
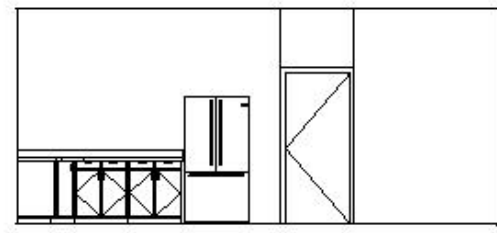
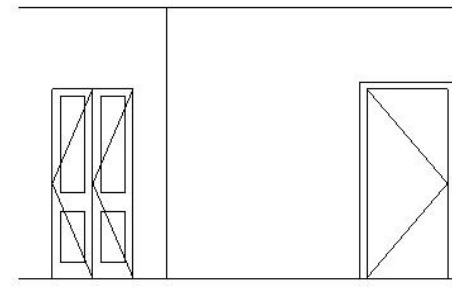
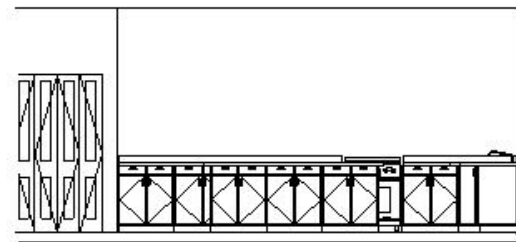
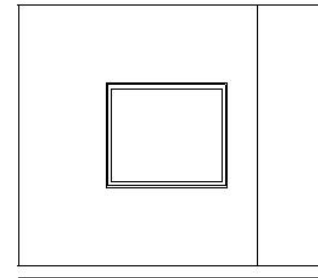
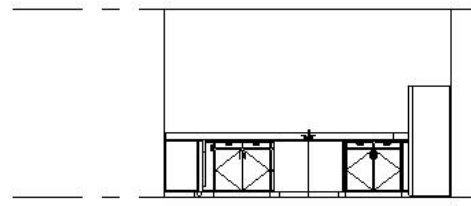


LIVING ROOM

MASTER BEDROOM

VESTIBULE

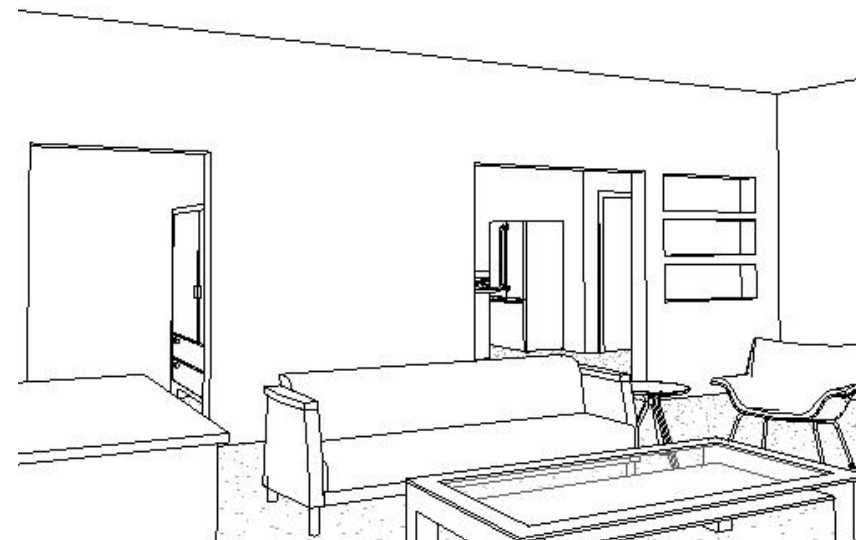
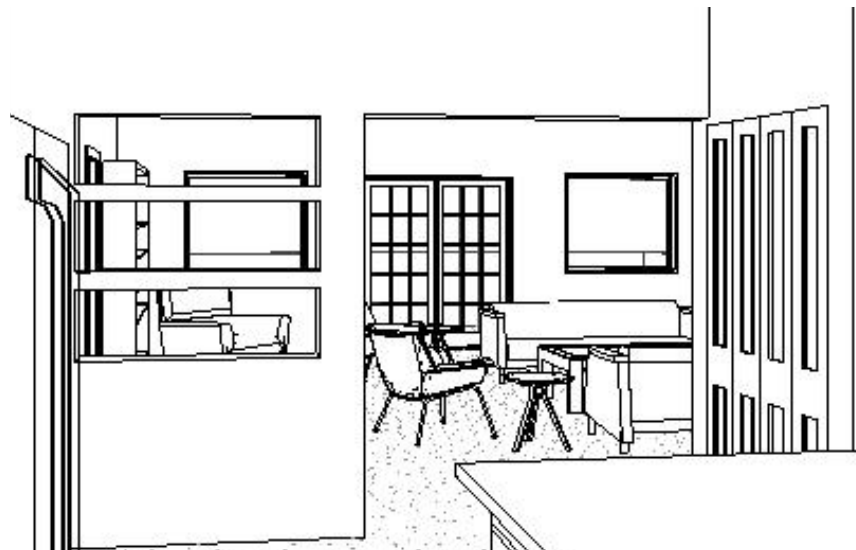
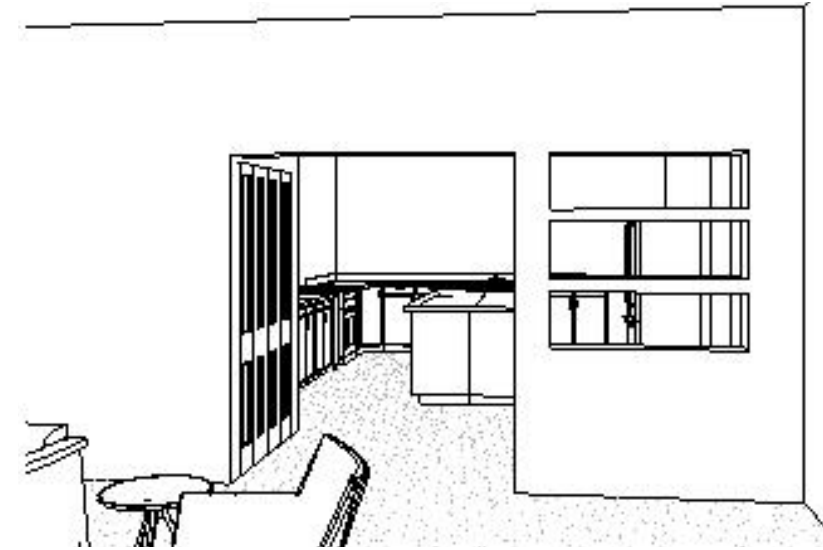
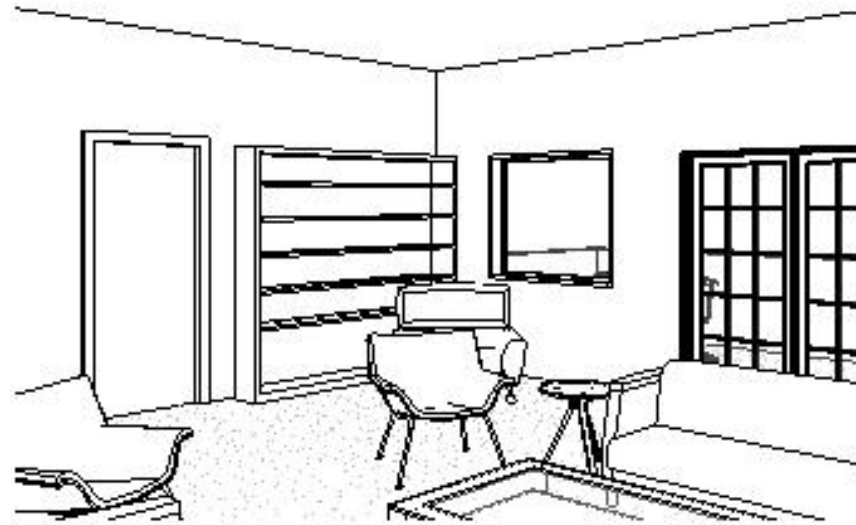




KITCHEN

ENTRY



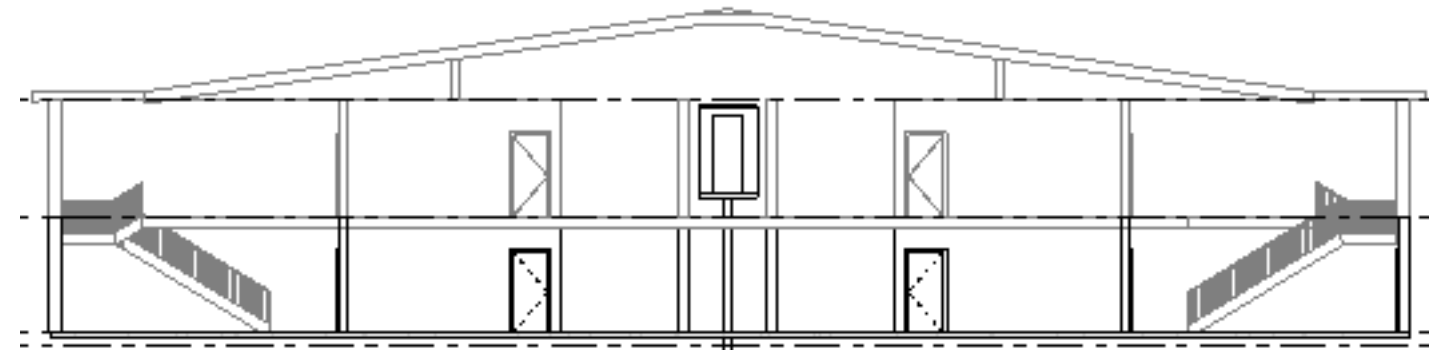
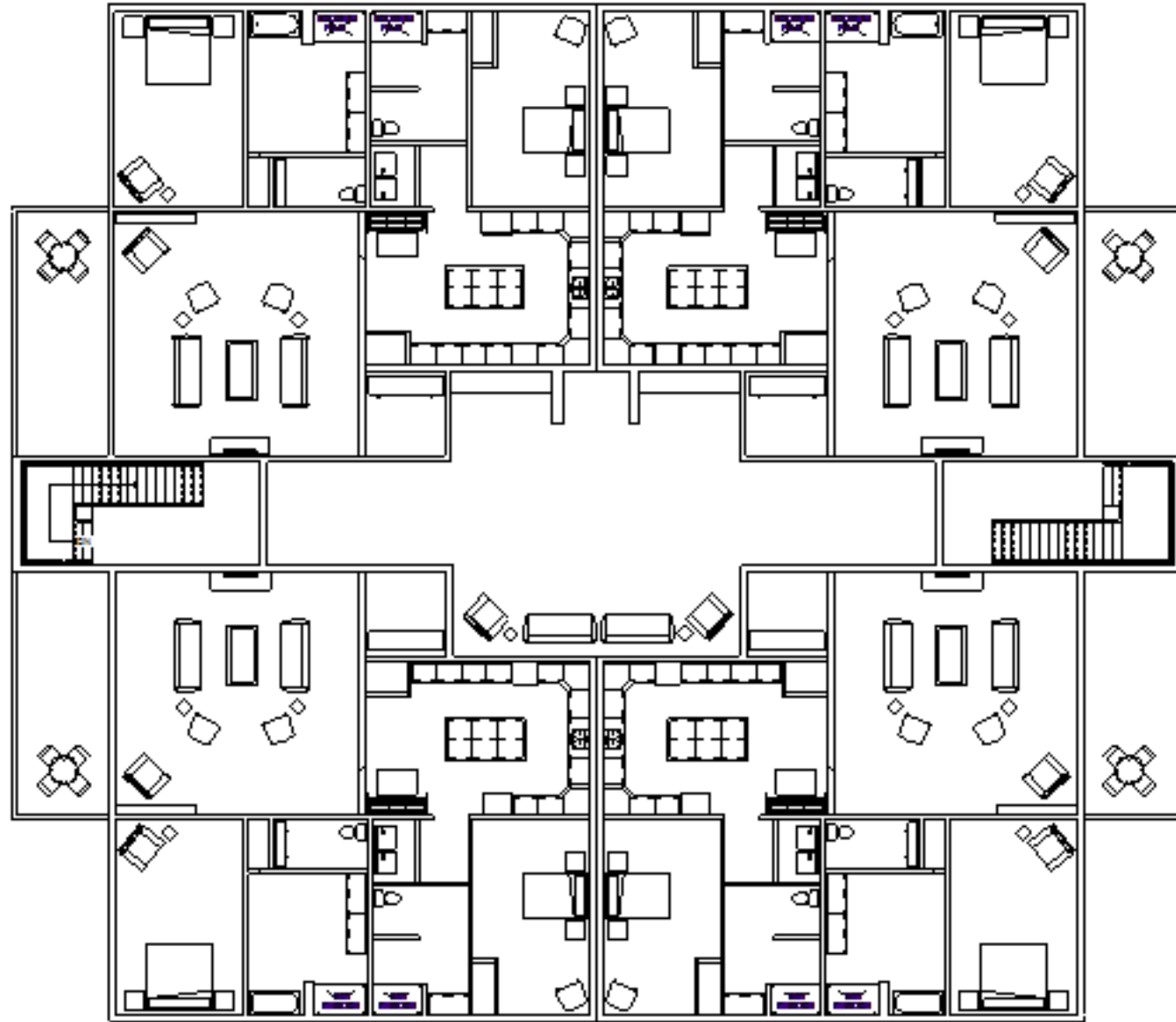


---

# ARCHITECTURAL FINISHES

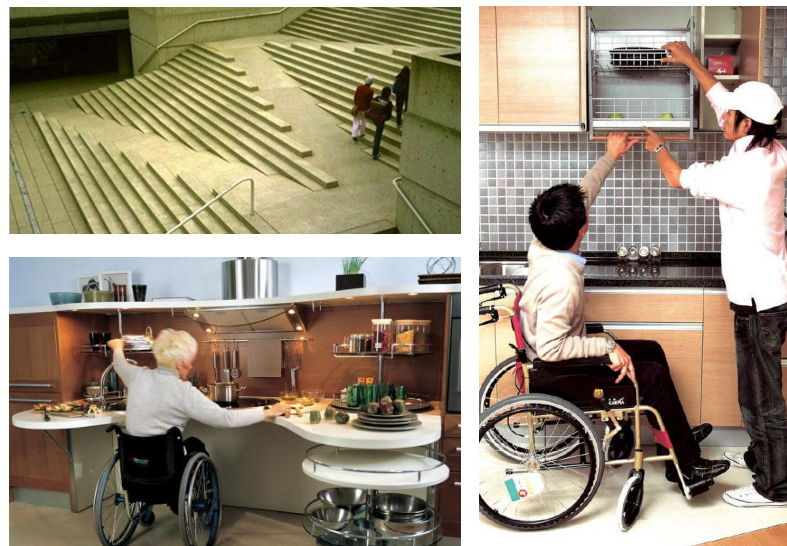


# EXTERIOR MASSING STUDY



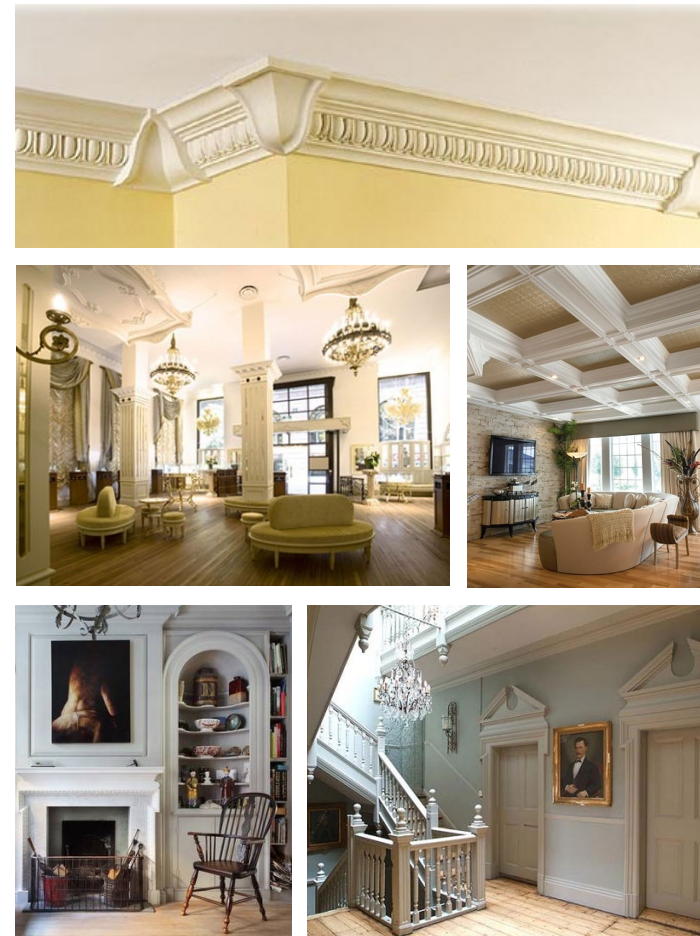
## UNIVERSAL DESIGN STRATEGIES

- THOUGH THE USER MAY NOT NEED THE EXTRA ROOM IMMEDIATELY, EACH ROOM HAS THE 5' TURNING RADIUS FOR A WHEELCHAIR AND THE RECOMMENDED SPACE IN FRONT OF ALL APPLIANCES, COUNTERS, AND OTHER WORK SURFACES
- THE BATHROOM CABINETRY INCLUDES THE 9" TOE KICK, SO THE CABINETRY ACCOMMODATES BOTH HANDICAPPED AND NON-HANDICAPPED USERS
- THE NECESSARY STRUCTURES FOR GRAB BARS HAVE ALREADY BEEN PUT INTO PLACE FOR WHEN THE USER NEEDS TO INSTALL THE BARS
- ROLL-IN SHOWERS ARE LOCATED IN BOTH THE BATHROOMS
- APPLIANCES, SUCH AS FRONT LOADING WASHER AND DRYER, CAN BE USED BY ANYONE IN THE SPACE
- LEVERED DOOR HARDWARE IS USED ON EVERY DOOR THROUGHOUT THE SPACE FOR EASY GRIP
- NONSLIP FLOORING IS USED IN BOTH BATHROOMS FOR THE ADDED SAFETY OF THE USER
- THERE ARE, OR WILL BE, A VARIETY OF TEXTURES AND PATTERNS ON ALL ARCHITECTURAL AND FURNITURE FINISHES TO HELP WITH THE DECLINING EYESIGHT OF THE OLDER USERS



## HISTORICAL PRECEDENTS

- WHILE THE PUBLIC AREAS ARE OPEN TO EACH OTHER, THERE ARE CLEAR BOUNDARIES TO THE LIVING AREA AND THE KITCHEN
- INTRICATE CROWN MOLDING, WAINSCOTING, AND COLUMNS (AVAILABLE AS UPGRADES FOR UNITS) ALL REFER TO MORE TRADITIONAL, HISTORIC STYLES
- THERE IS A MORE FORMAL FURNITURE ARRANGEMENT IN THE LIVING ROOM
- FURNITURE SELECTIONS ARE ALSO MORE TRADITIONAL IN STYLE



## APPLIED THEORIES OF HUMAN BEHAVIOR

- TERRITORIALITY: HUMAN BEHAVIOR THAT ATTEMPTS TO LAY CLAIM TO A SPACE AND GIVE A SENSE OF SELF-IDENTITY  
THOUGH ALL PART OF AN AGING IN PLACE COMMUNITY, EACH UNIT IS ITS OWN LITTLE ECOSYSTEM WITH ALL THE NECESSARY FEATURES ONE WOULD HAVE IN A SINGLE FAMILY DWELLING. SINCE THE USERS WOULD OWN THEIR UNITS, THEY COULD EVEN MAKE CHANGES OR ADD UPGRADES TO THE SPACE, ALLOWING THEM TO CREATE A NEW HOME TO THEIR OWN TASTES.
- PROXEMICS: THE STUDY OF THE DEGREES OF SPATIAL SEPARATION THAT PEOPLE MAINTAIN WHILE INTERACTING, AND HOW THESE DISTANCES ARE RELATED TO SOCIAL, ENVIRONMENTAL, AND CULTURAL FACTORS; AS DESCRIBED BY EDWARD T. HALL: FROM CLOSEST TO FURTHEST, INTIMATE, PERSONAL, SOCIAL, AND PUBLIC  
THE DIFFERENT AREAS IN THE UNIT FALL INTO EACH OF THE DEGREES OF THE SPATIAL SEPARATIONS. THE MOST INTIMATE SPACE IS THE MASTER BEDROOM AND BATH, CLOSED OFF IN ITS OWN SEPARATE SECTION OF THE OVERALL SPACE. THE GUEST BEDROOM AND SECOND BATHROOM ARE ALSO OFF TO THE SIDE FROM THE MORE PUBLIC SPACES, BUT STILL EASILY ACCESSIBLE THROUGH A VESTIBULE OPEN TO EVERYONE. THE LIVING SPACE AND KITCHEN ARE MORE SOCIAL AREAS, WITH PLENTY OF ROOM FOR ENTERTAINING GUESTS. THE LARGE PATIO AREA, SINCE IT'S LOCATED OUTSIDE AND EASILY SEEN BY PASSERBY, IS A MORE PUBLIC AREA.
- REGIONALISM: THIS IS A SOCIAL OR CULTURAL INFLUENCE ON A DESIGN THAT REFLECTS A PARTICULAR GEOGRAPHICAL AREA SINCE THE COMMUNITY IS SET IN GREENVILLE, THE EXTERIOR DESIGN AESTHETIC TIES INTO THE EXISTING ARCHITECTURE IN THE AREA

