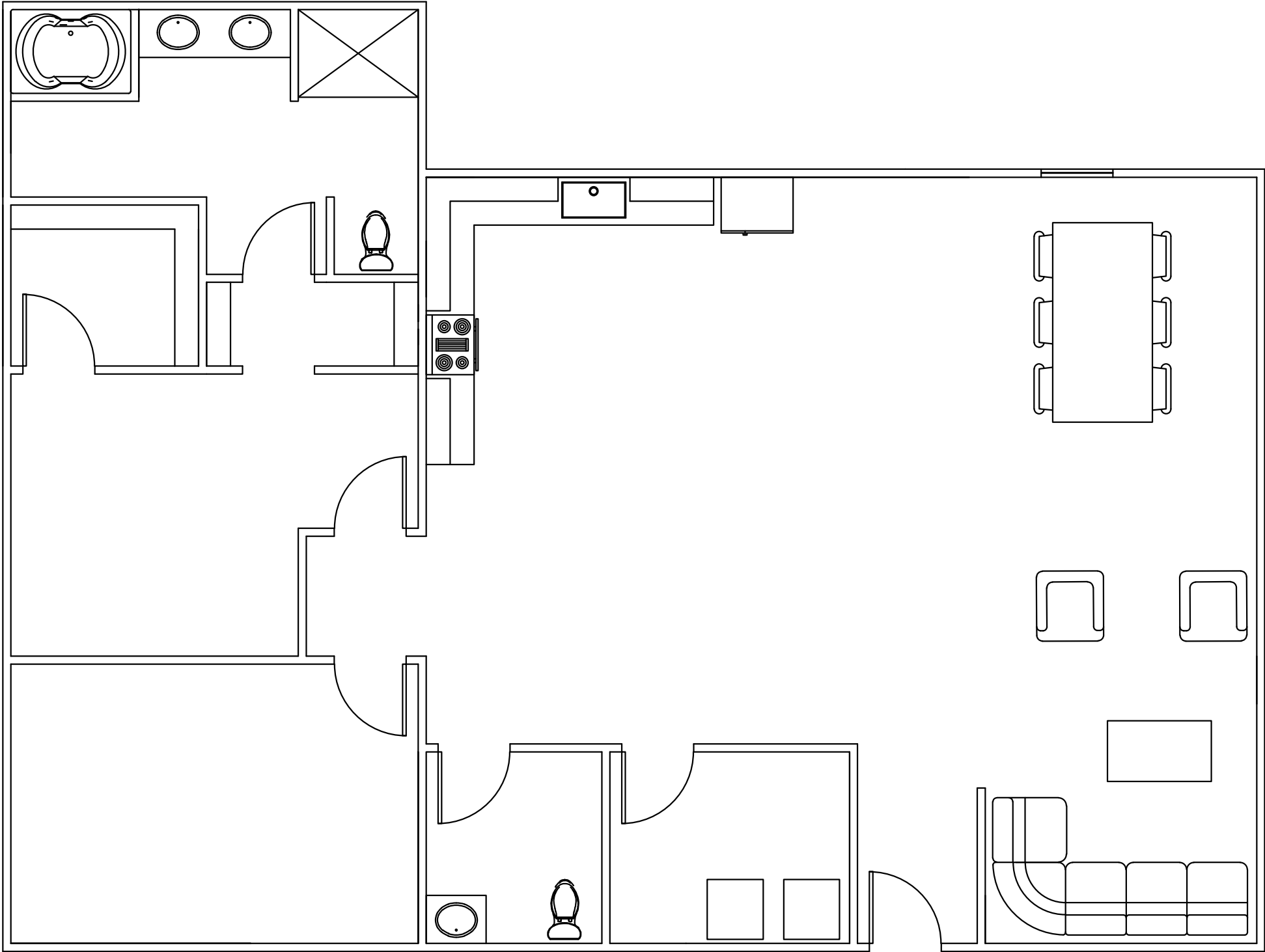


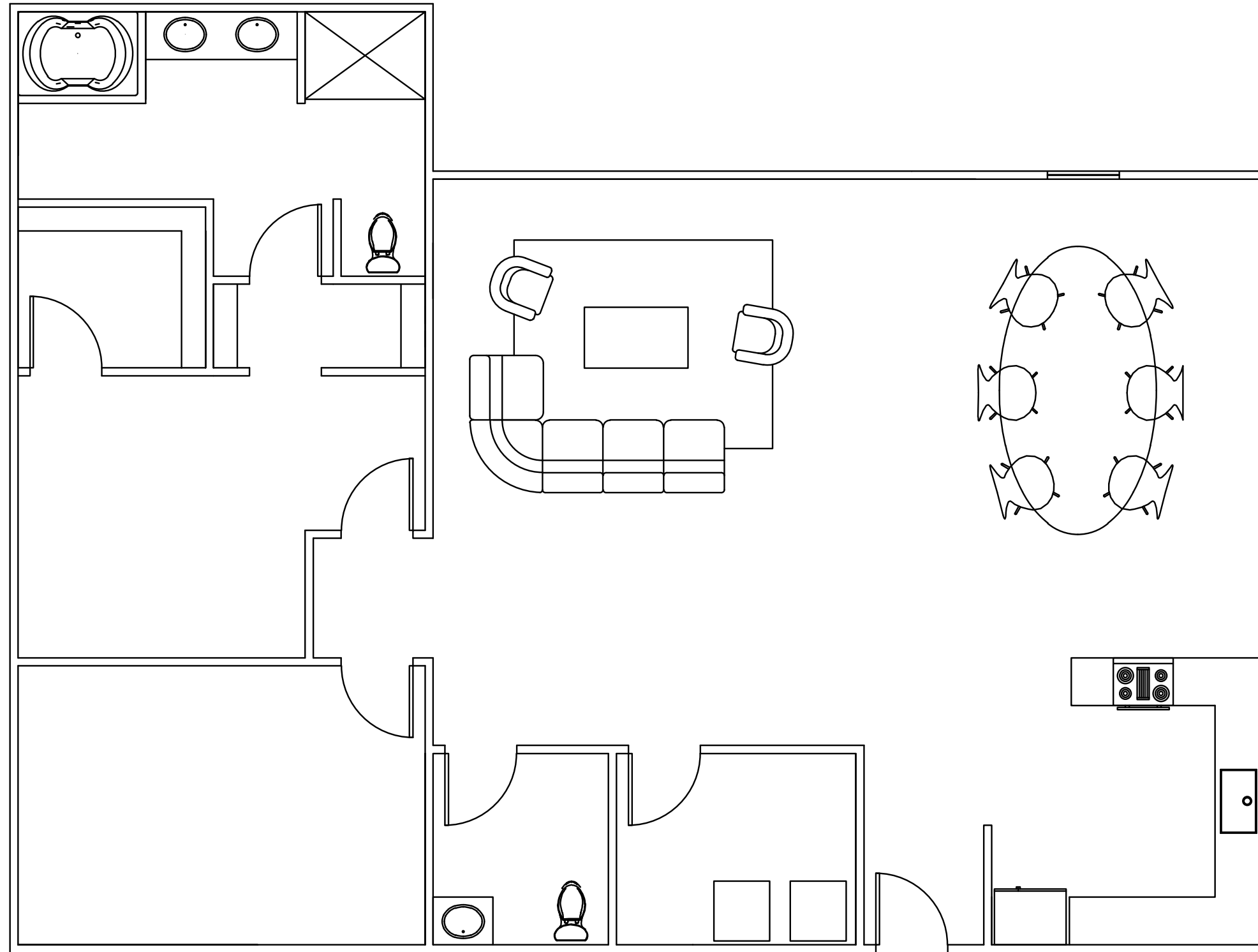
# PORTFOLIO 2

BRANDON TAYLOR  
IDSN 4500  
PROF. GUSTINA  
OCTOBER 21, 2014

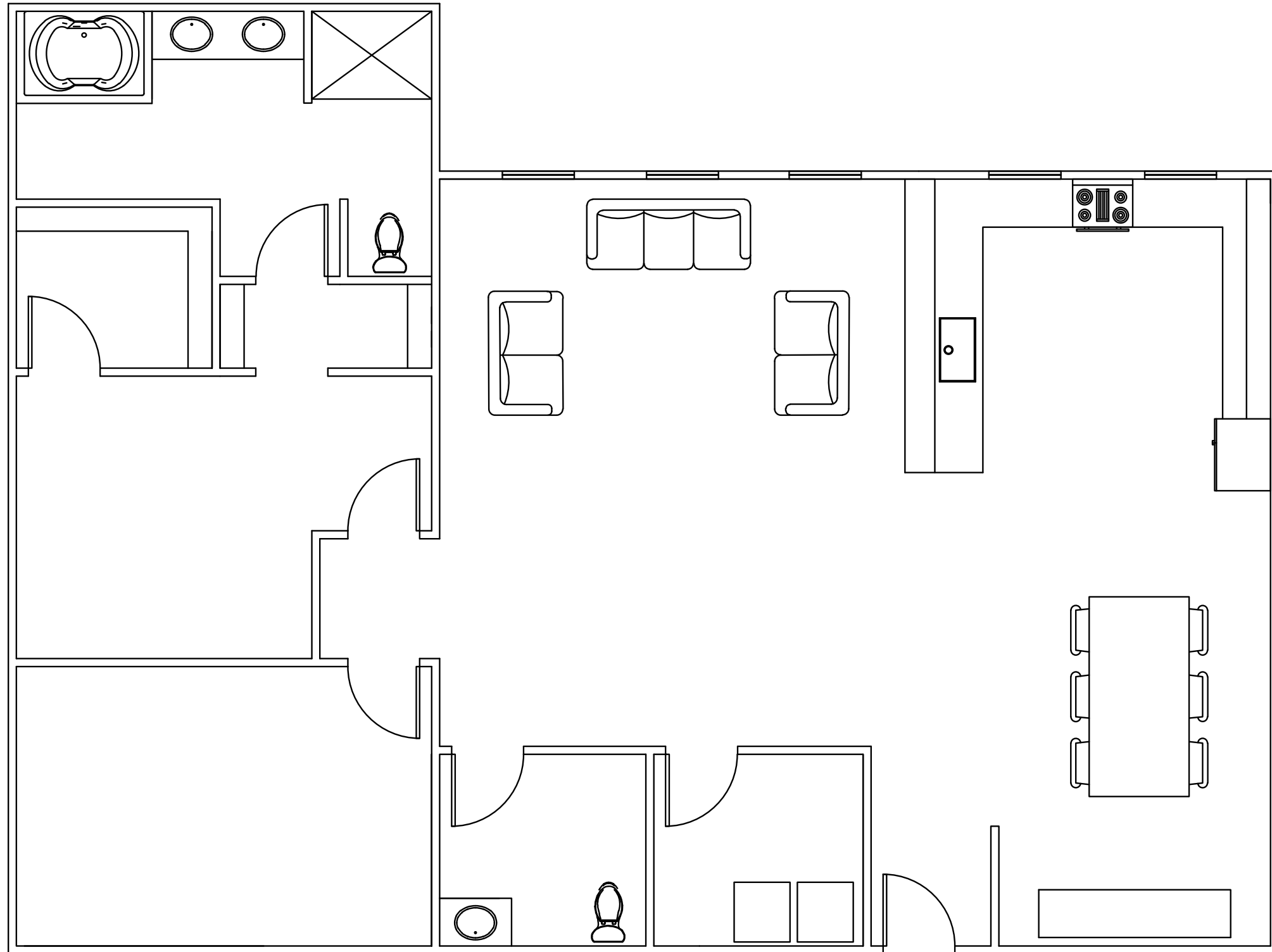
PLAN A



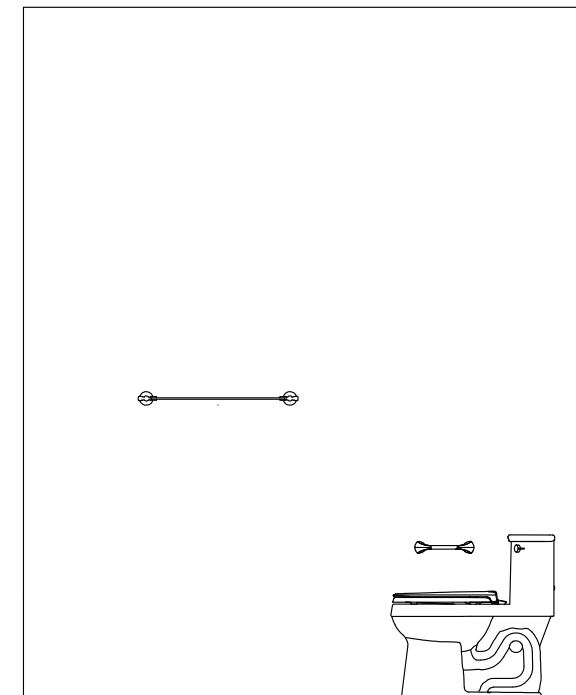
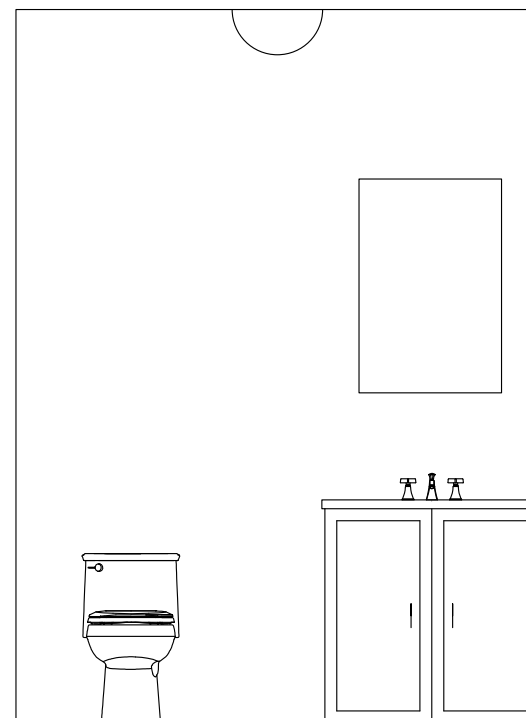
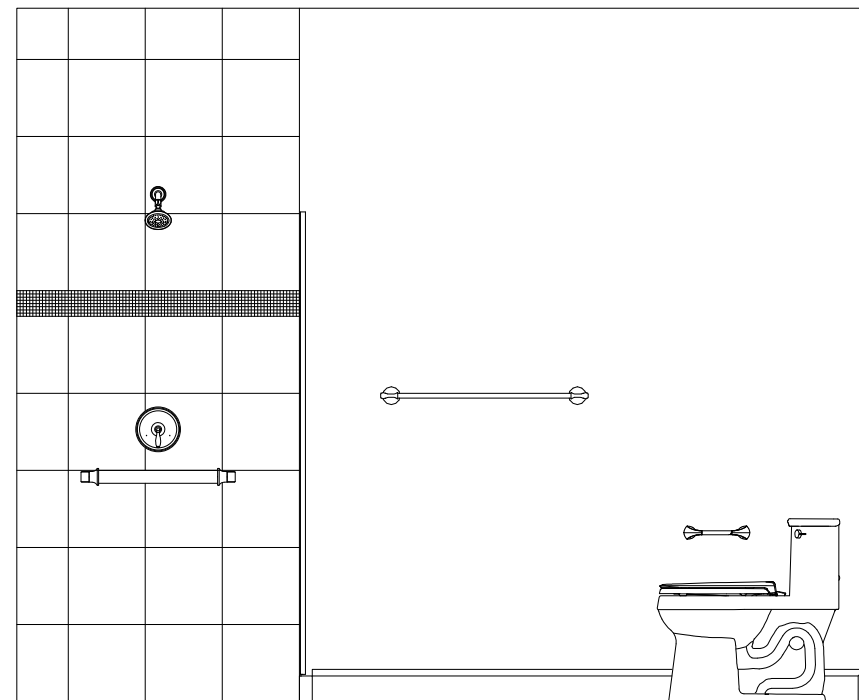
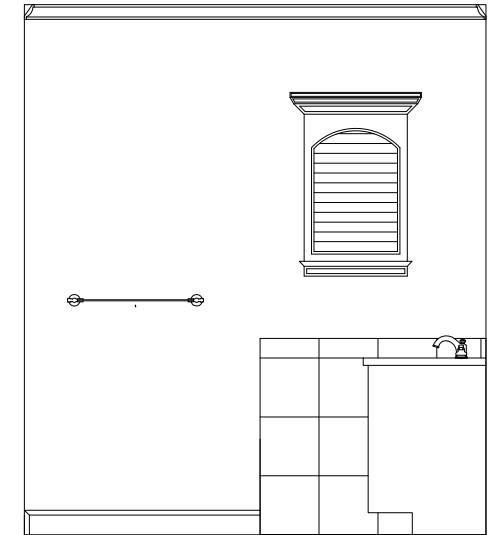
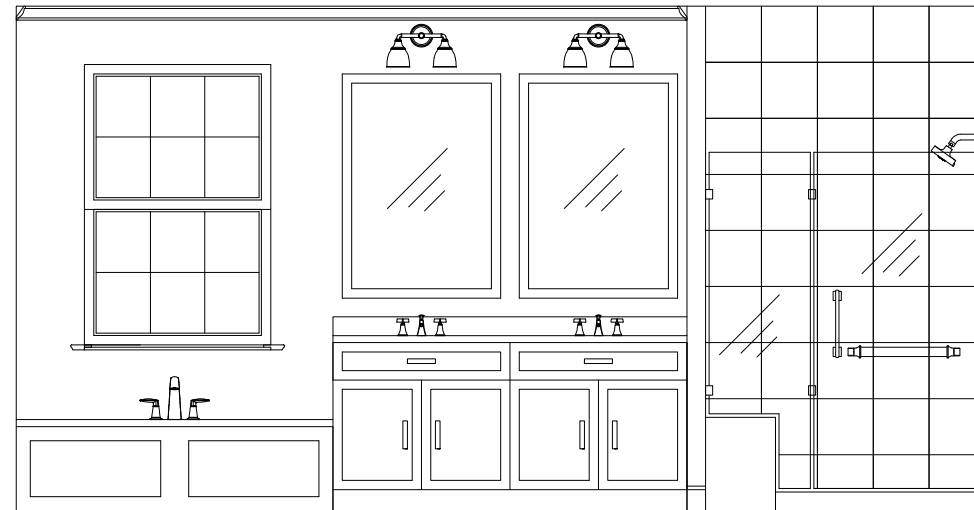
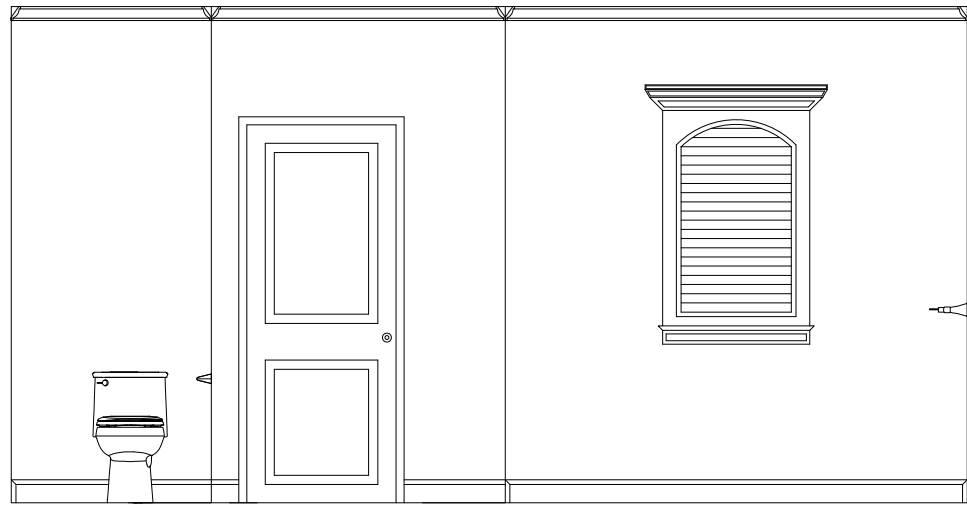
# PLAN B



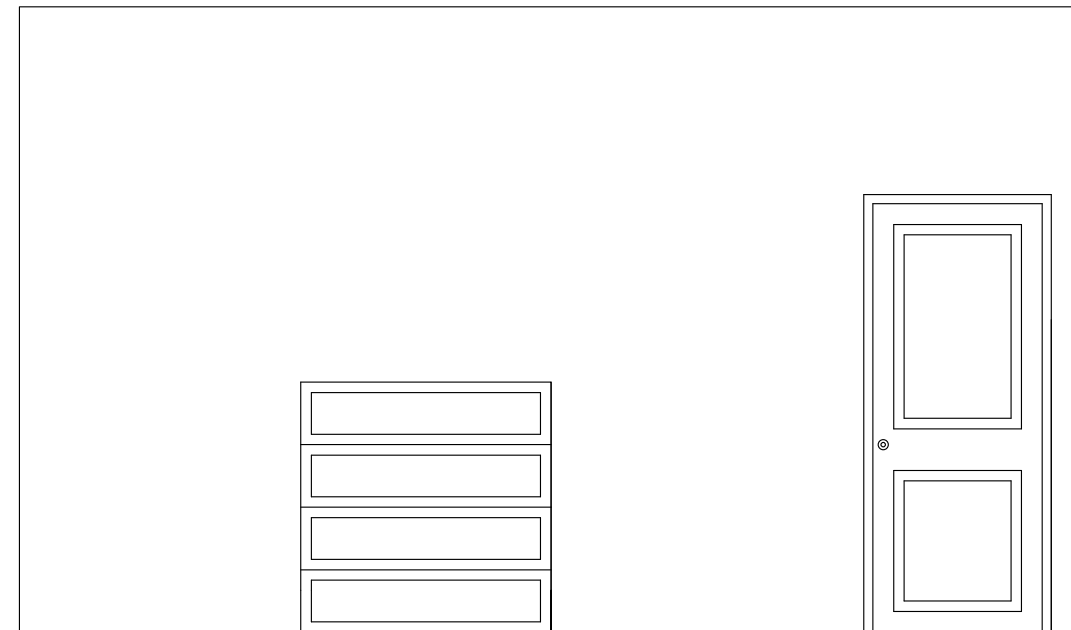
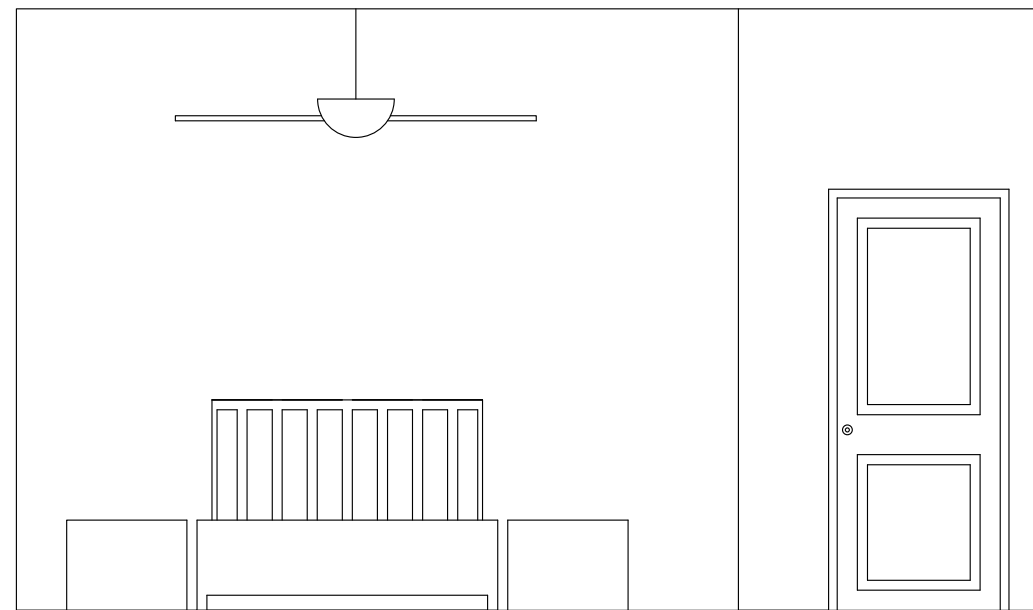
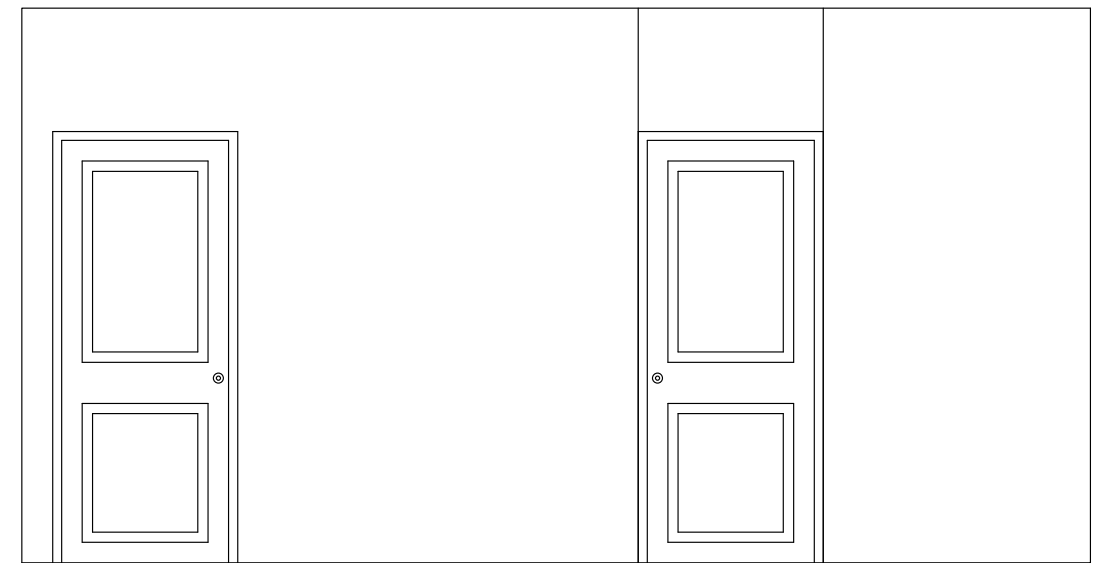
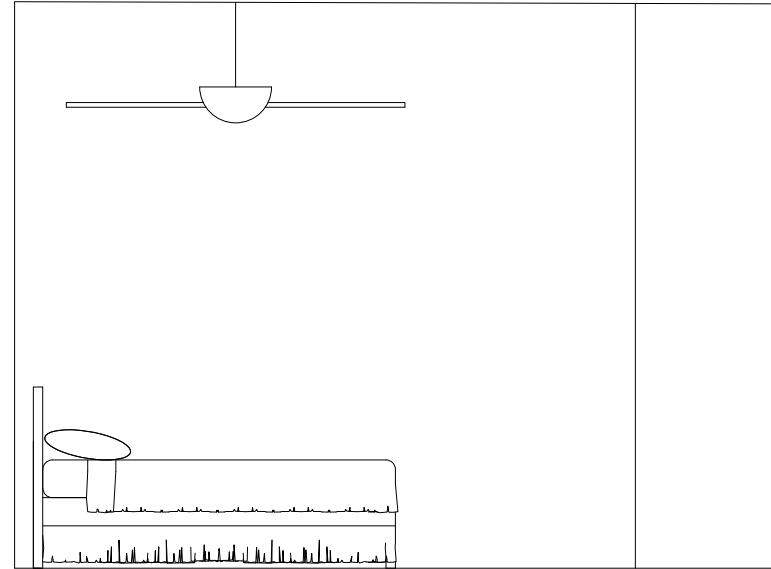
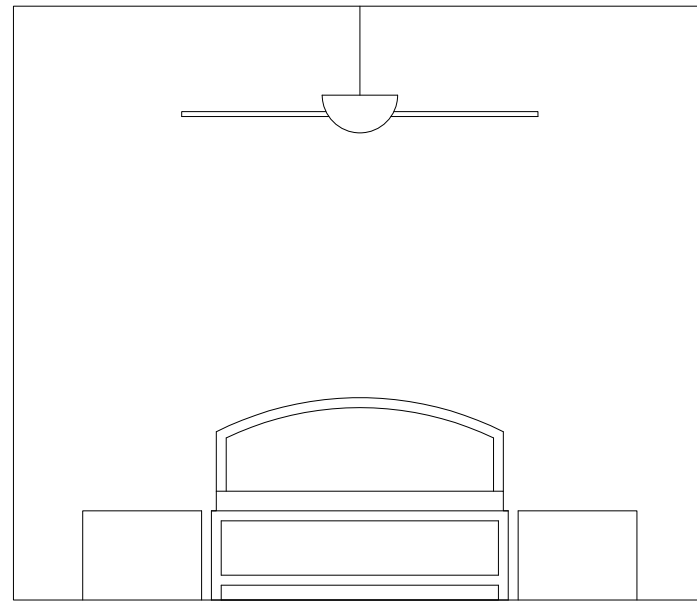
# PLAN C



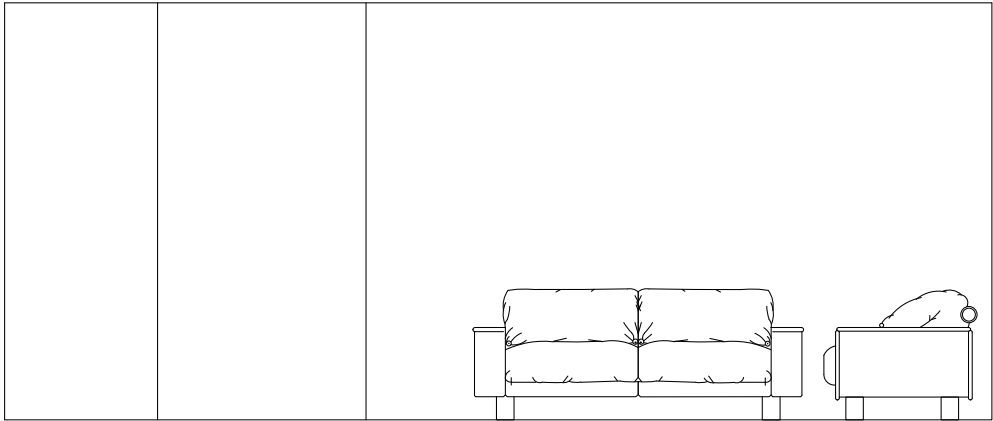
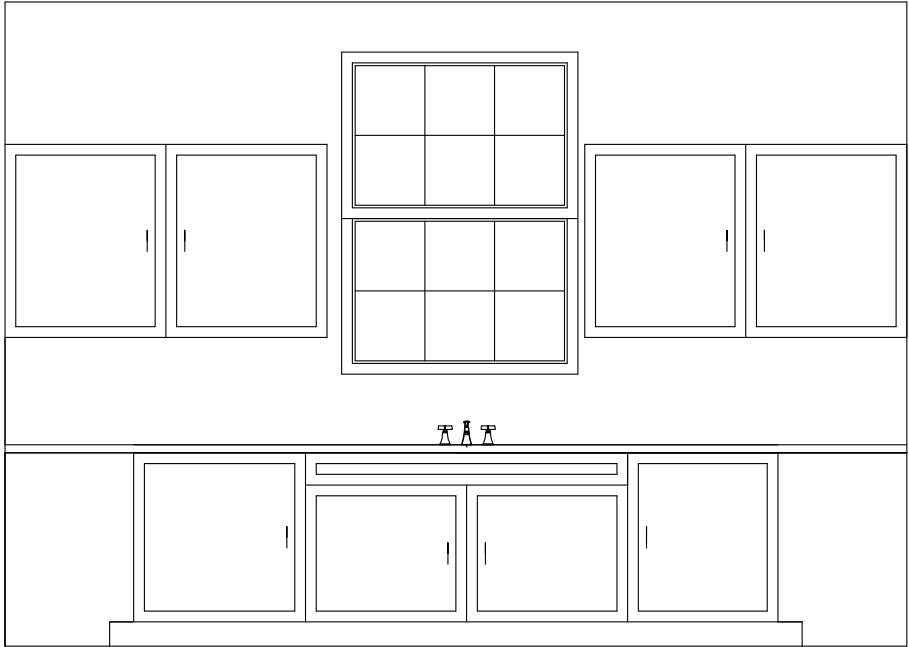
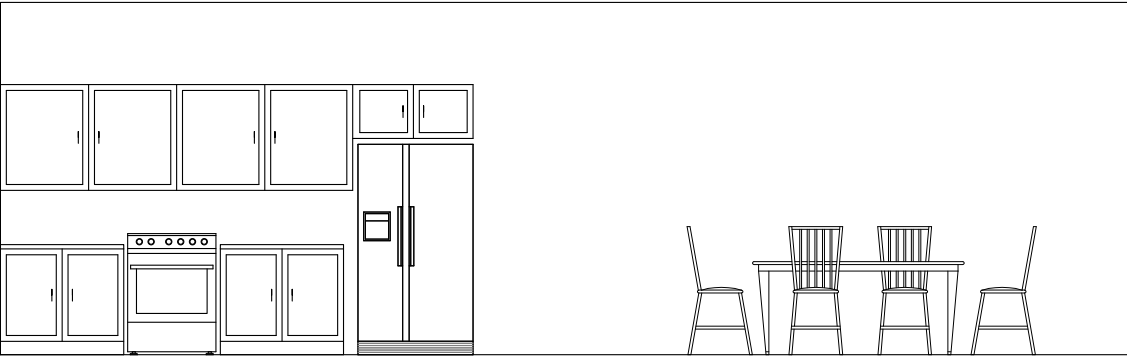
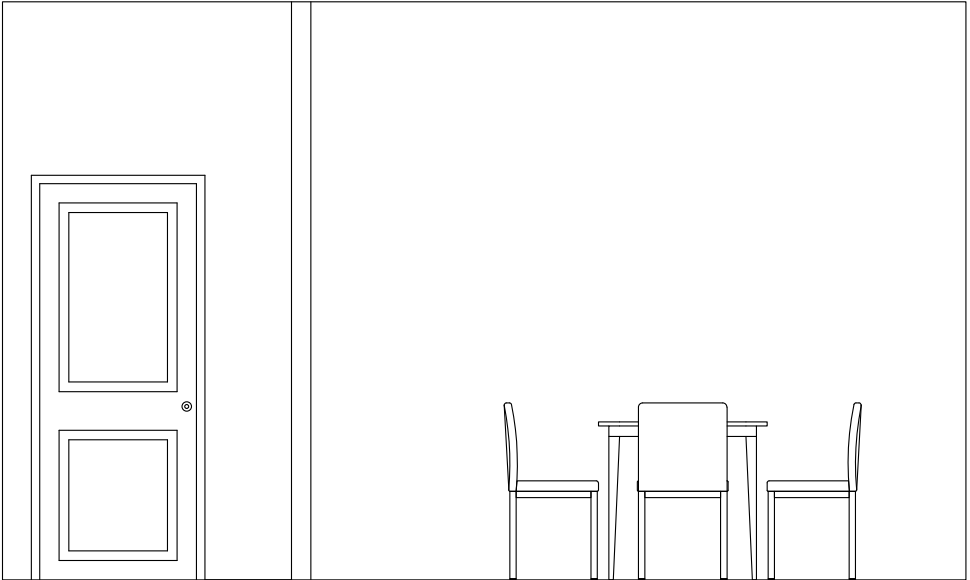
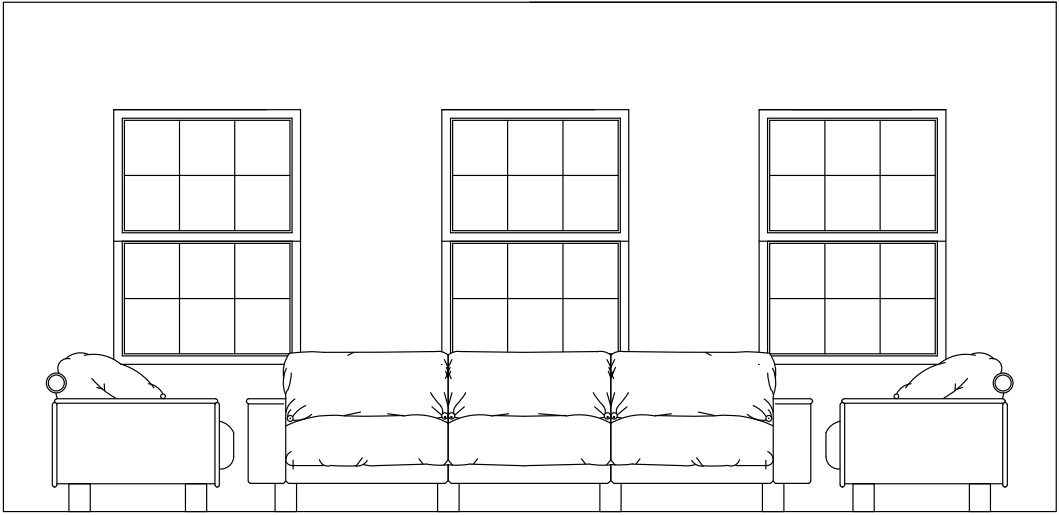
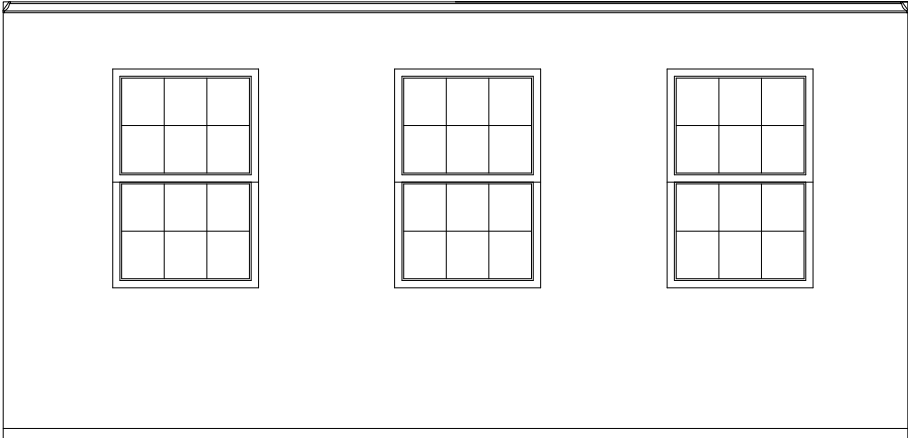
# ELEVATIONS



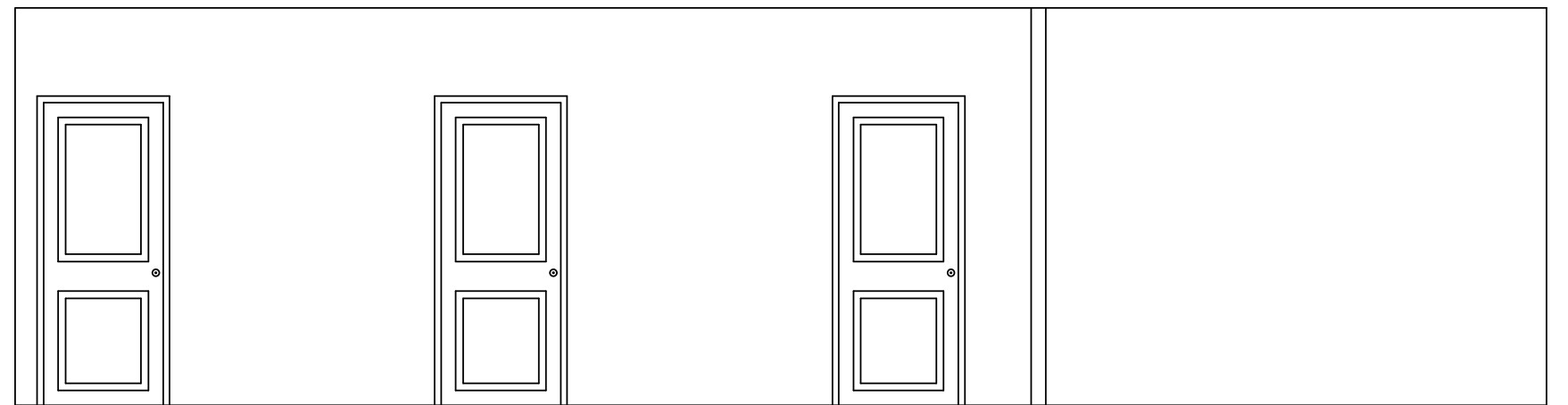
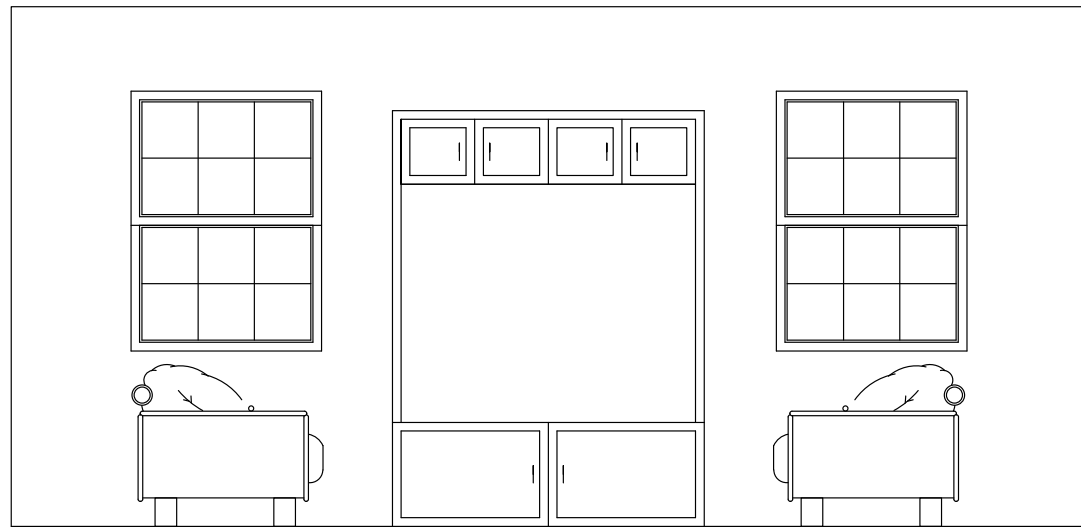
# ELEVATIONS



# ELEVATIONS

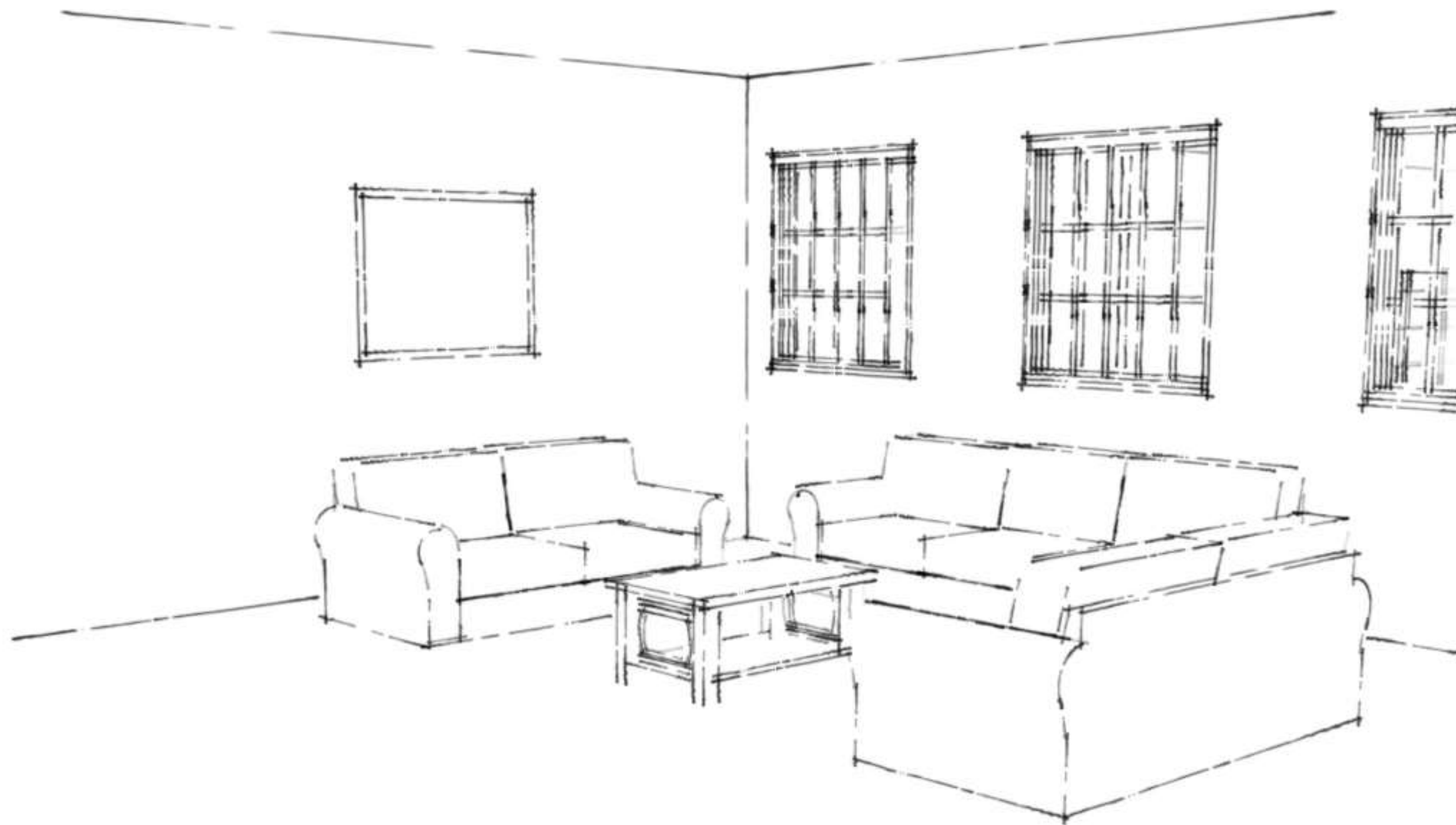


# ELEVATIONS

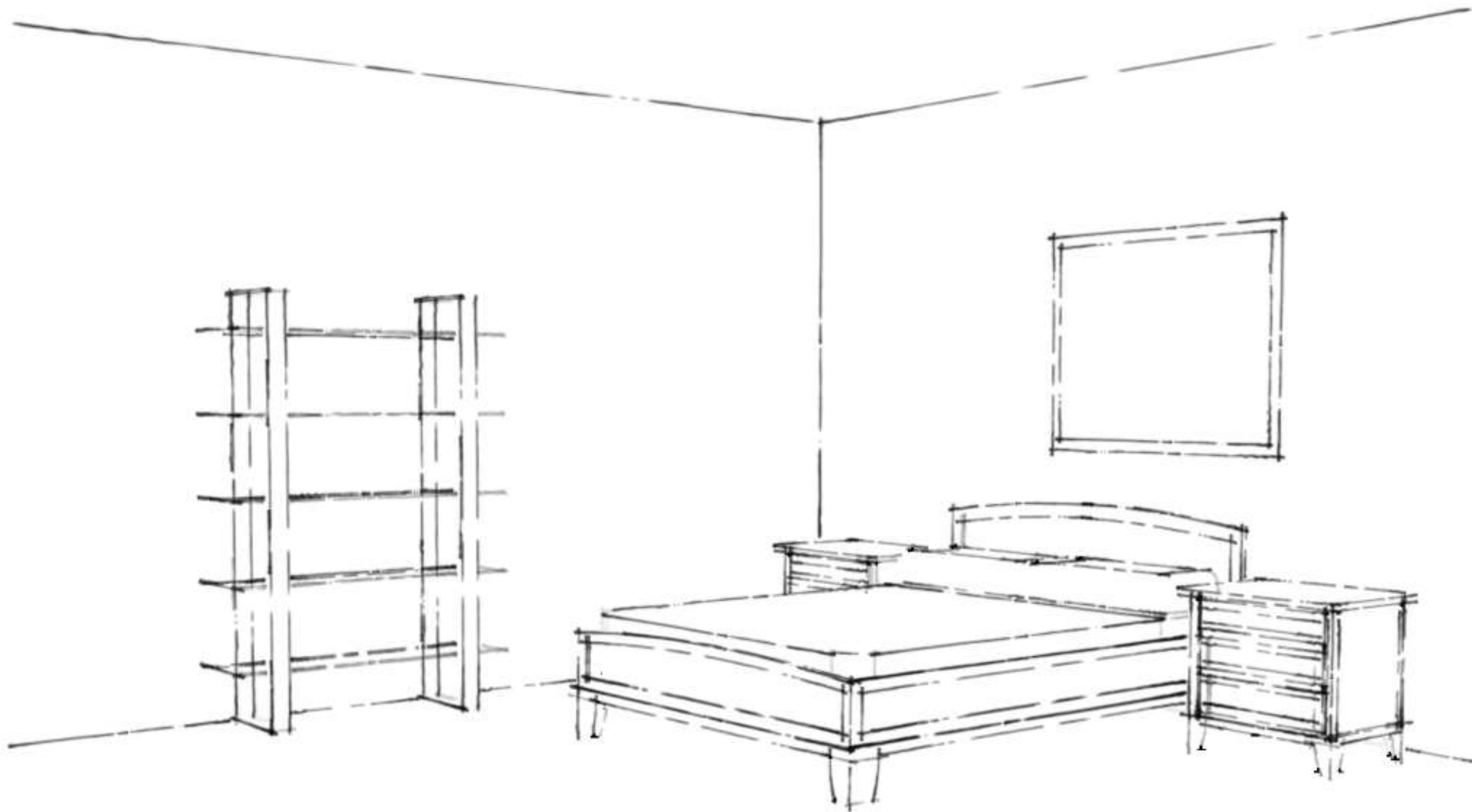




# PERSPECTIVE SKETCHES



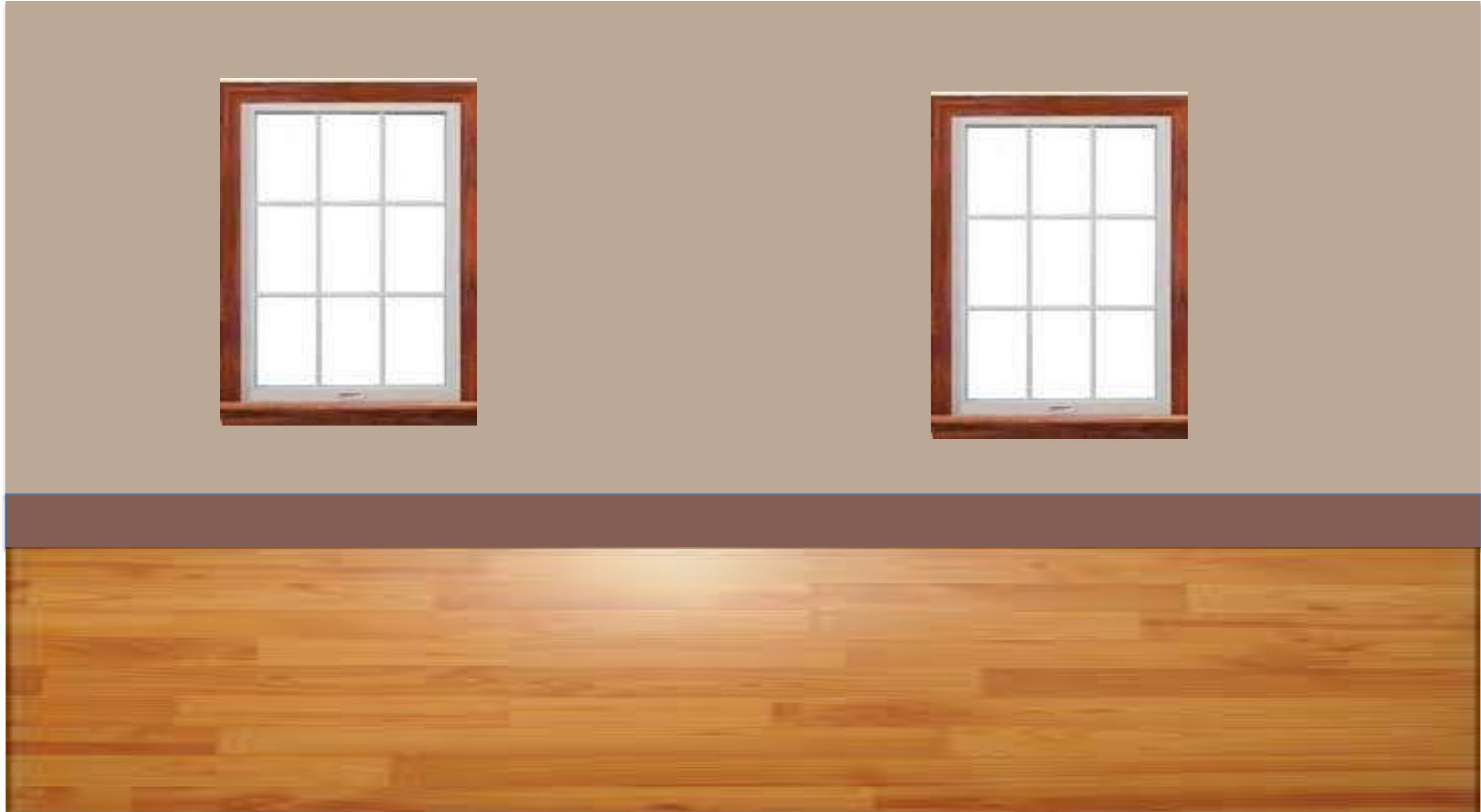
# PERSPECTIVE SKETCHES



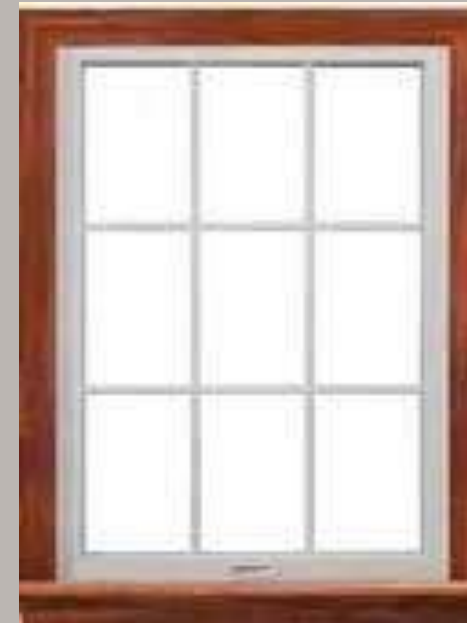
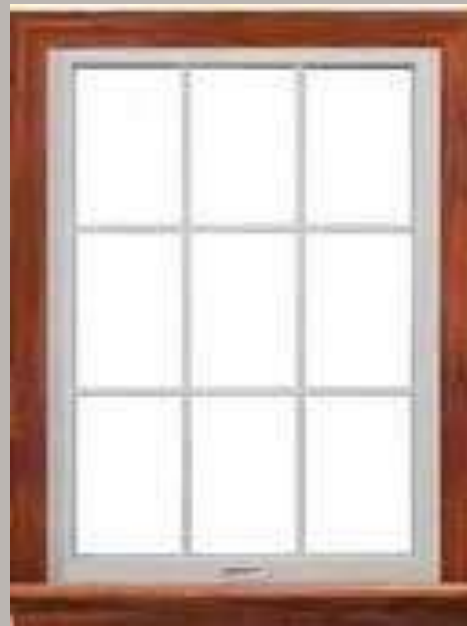
PERSPECTIVE SKETCHES



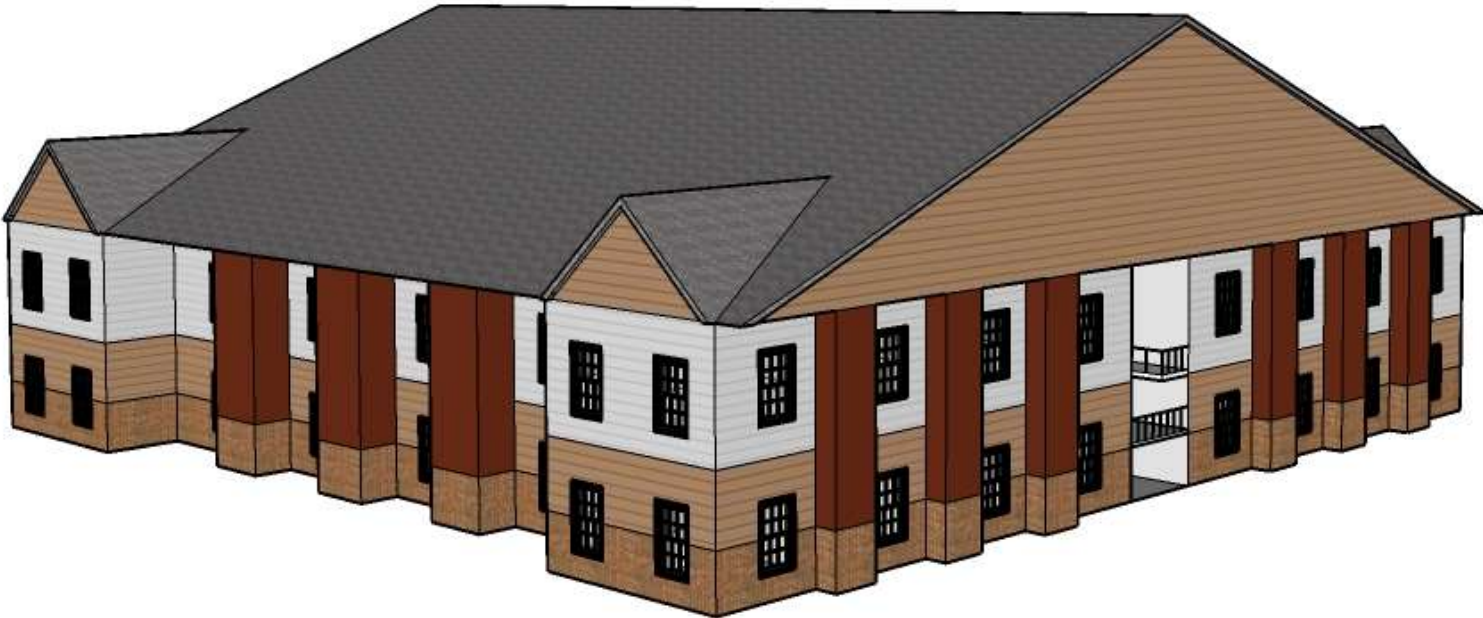
# ARCHITECTURAL FINISHES



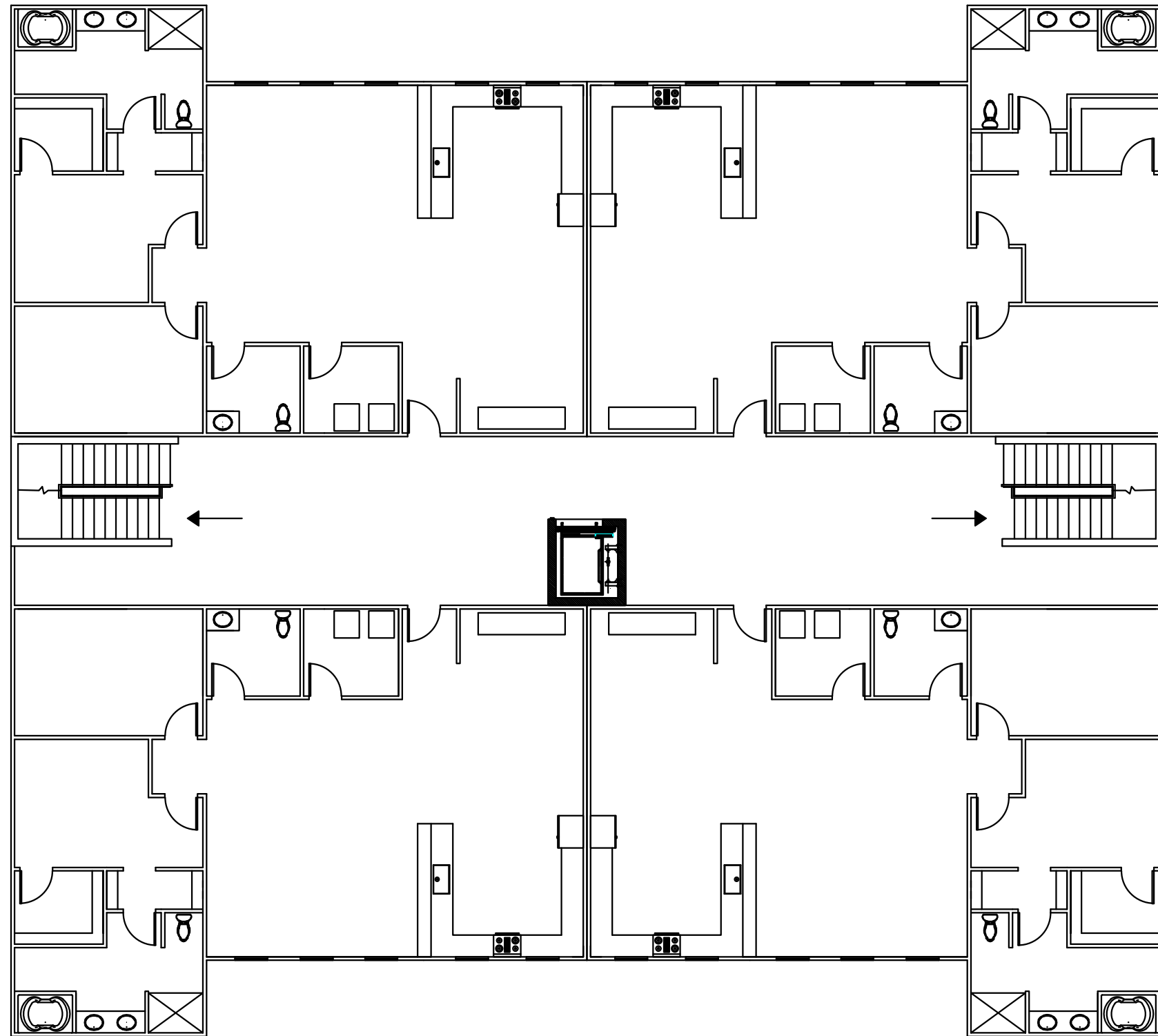
# ARCHITECTURAL FINISHES



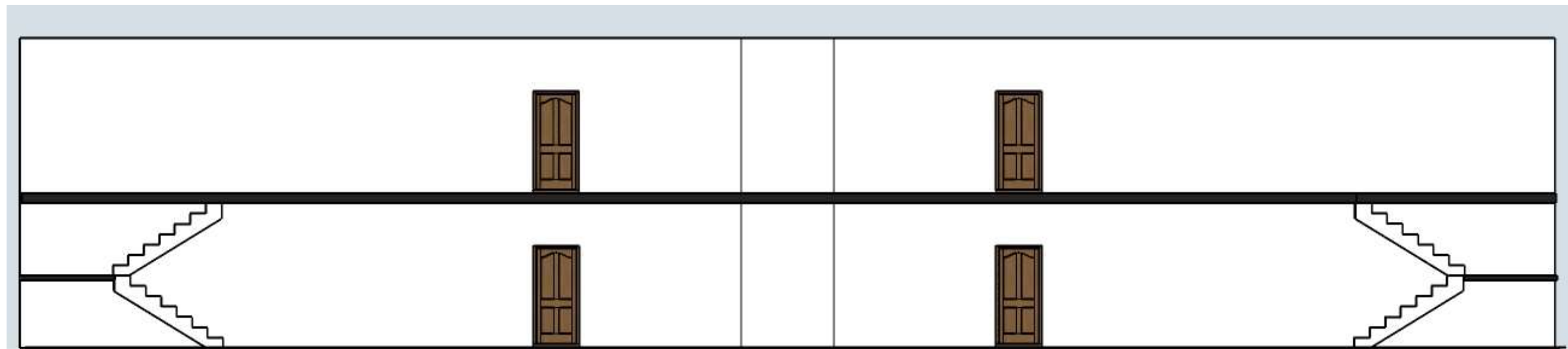
# EXTERIOR MASSING STUDY



# EXTERIOR MASSING STUDY



# EAST WEST SECTION CUT







## HISTORICAL PRECEDENTS

- Combination of traditional and modern
- Simple design, not overwhelming
- Will feature lots of light with a warm color scheme that is not complicated
- Straight lines with little curves
- Timeless look that creates a visual balance between simple and luxurious
- Colors will create a clean looking space and design
- Space and design will welcome clients and guests



## *TRANSITIONAL*



# THEORIES OF HUMAN BEHAVIOR

- Seniors enjoy access to social activities as well as access to the exterior and nature.
- Seniors do not want their home to be filled with handicap features such as grab bars because it makes them feel older and ages the space.
- Amenities and community engagement are important to the seniors.

