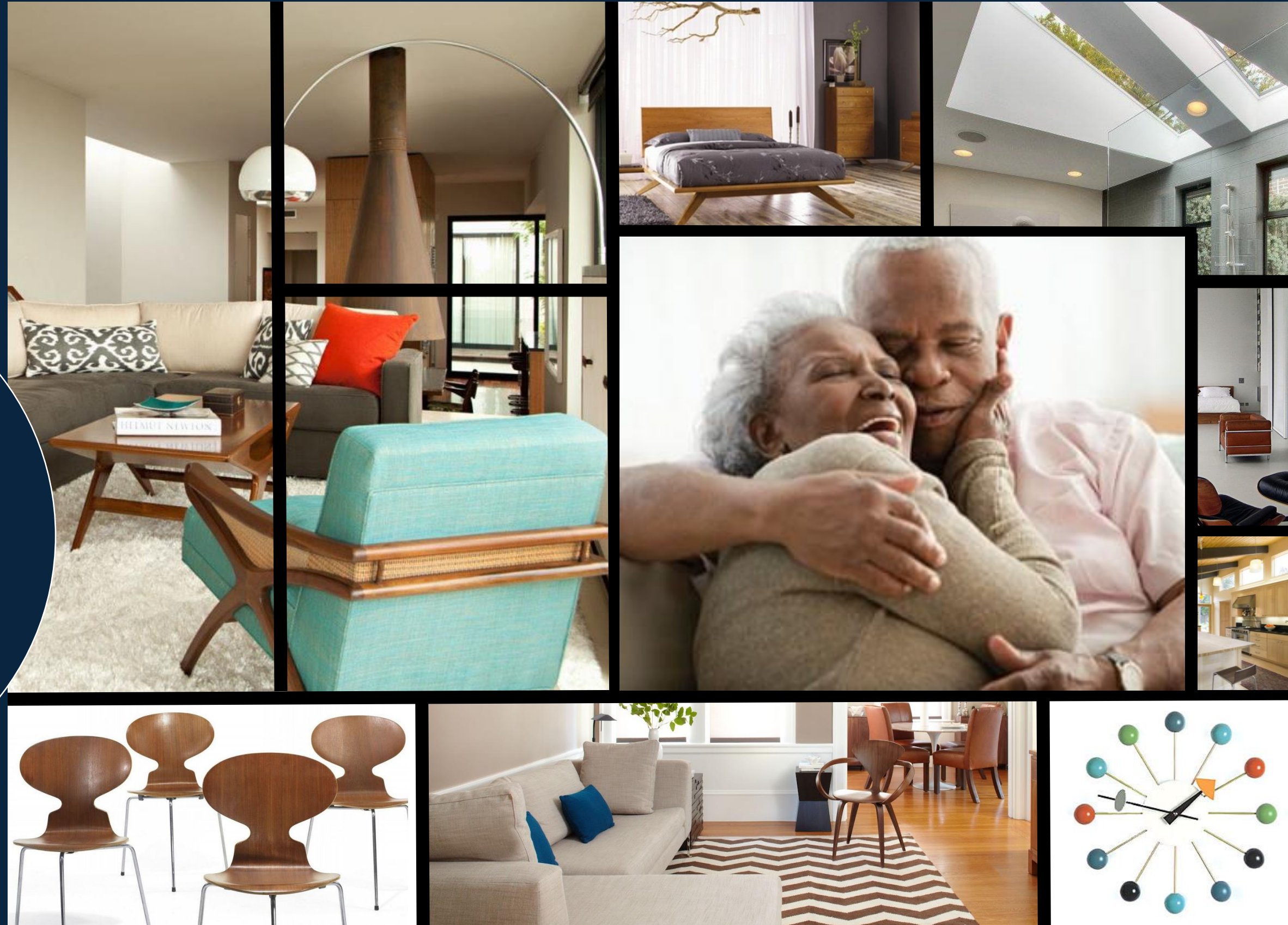


Genesis Springs

Portfolio 2: FALL IDSN 4500 Universal Design

“Place your trust in us, and let us place you in your new *paradise.*”

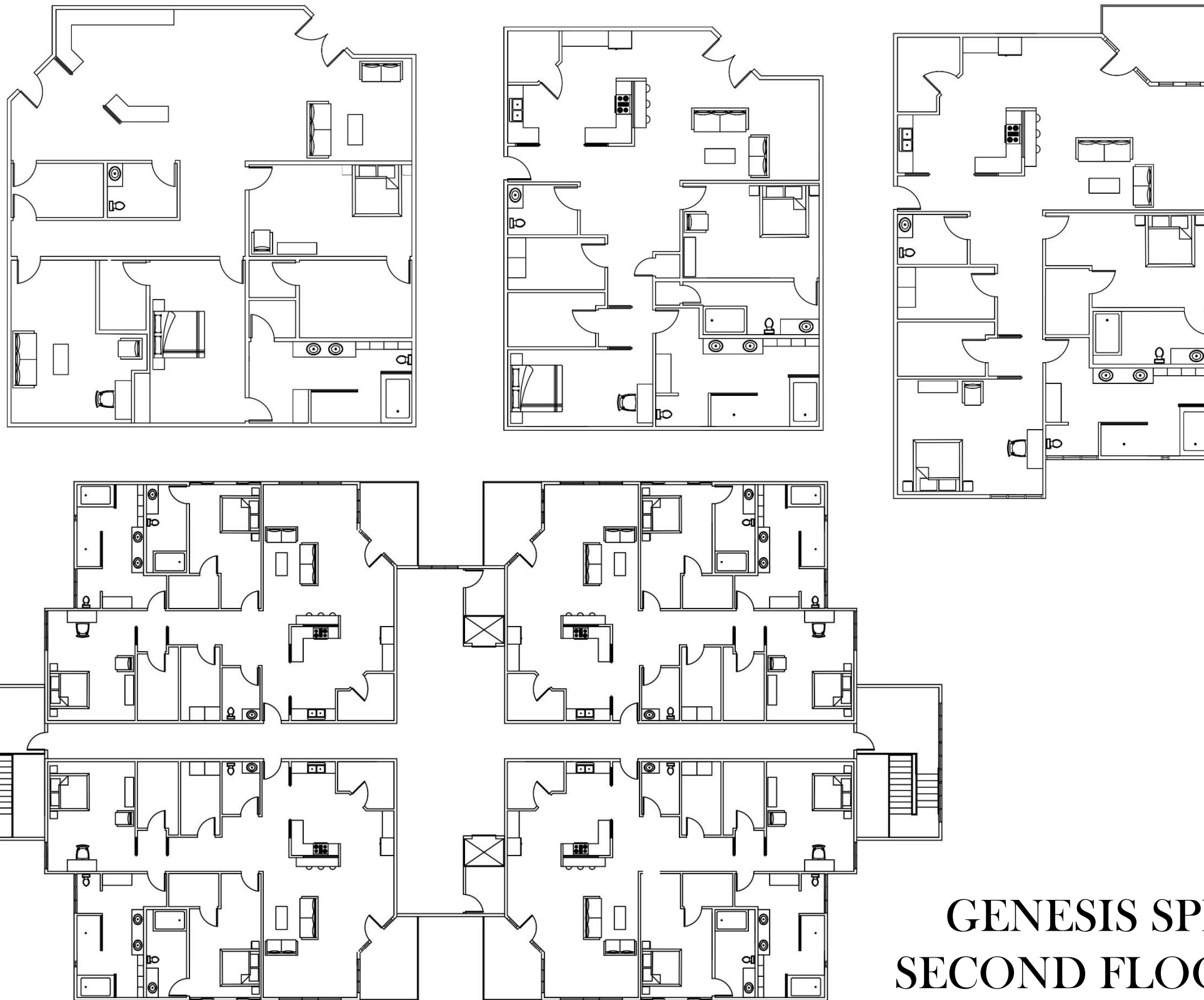


Condominium

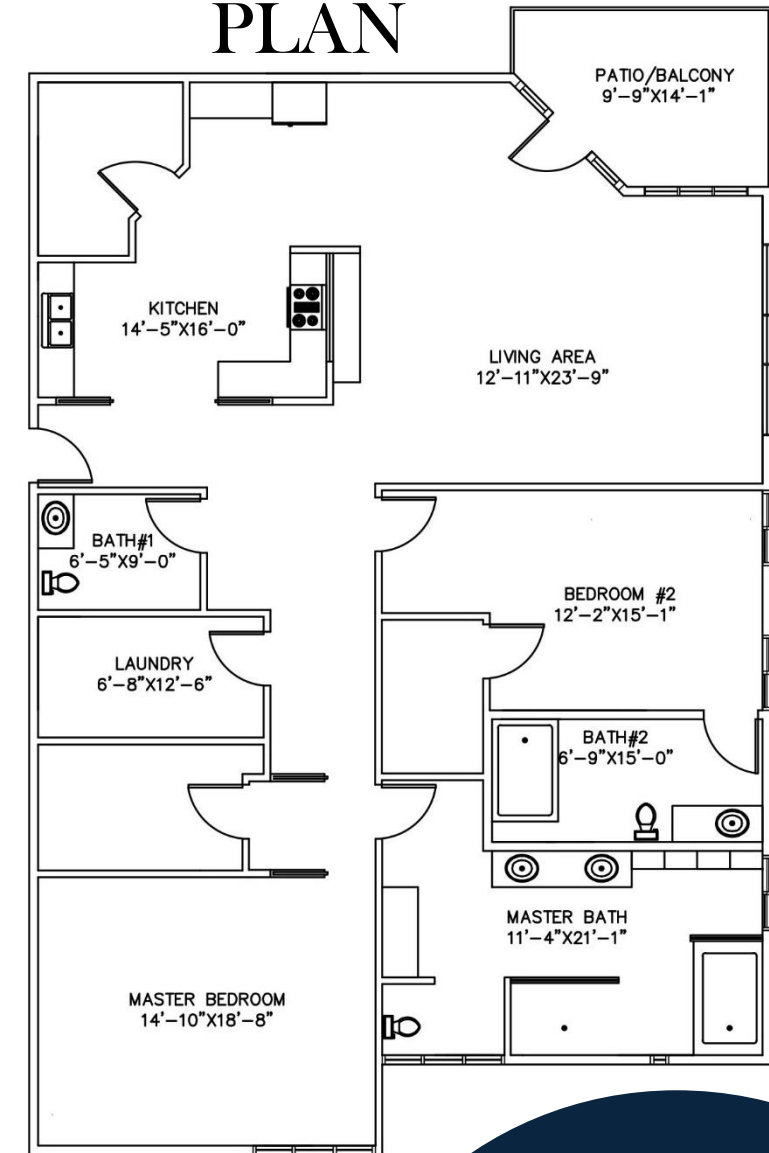
Retirement Living

Project Designer: Angela D. Truehill

PRELIMINARY UNIT PLANS



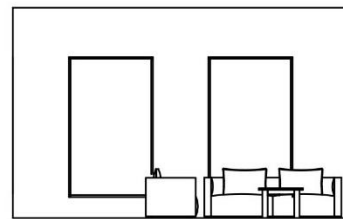
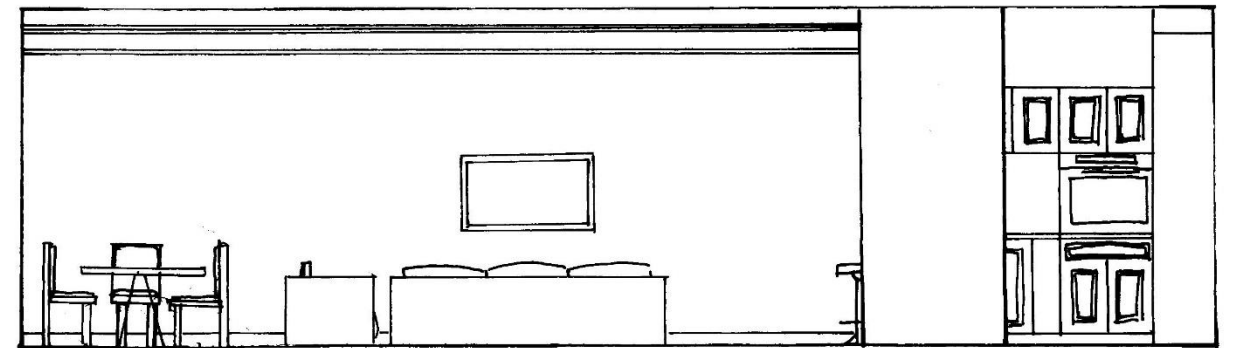
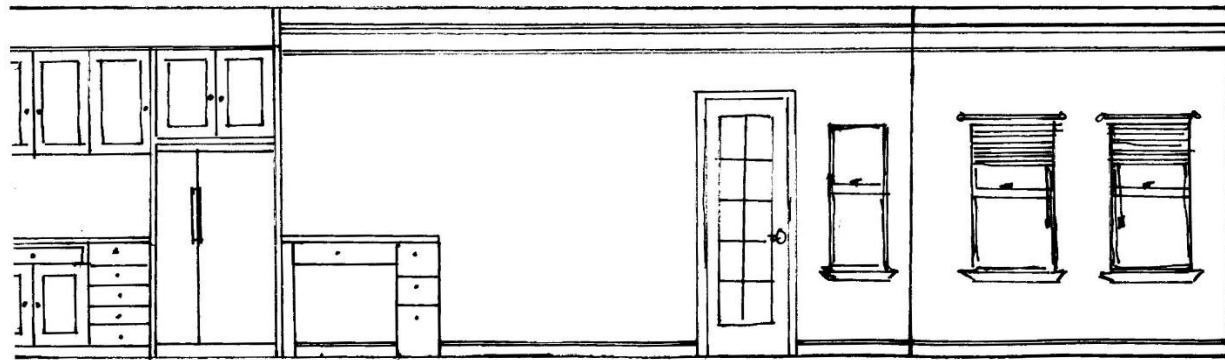
FINAL UNIT FLOOR PLAN



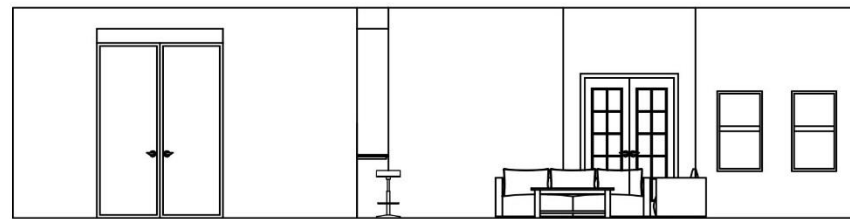
GENESIS SPRINGS SECOND FLOOR PLAN



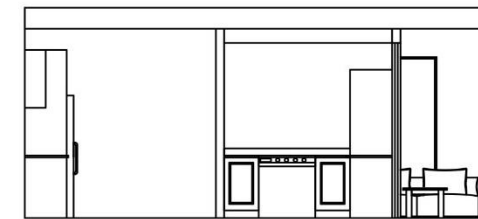
ELEVATIONS



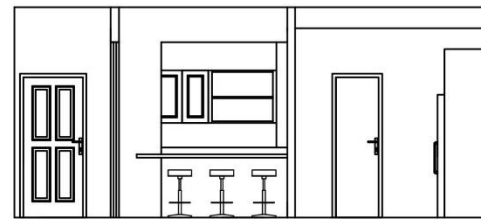
A2 LIVING AREA ELEVATION
SCALE: $\frac{1}{8}''=1'-0''$



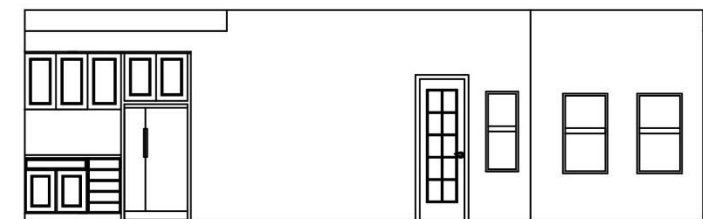
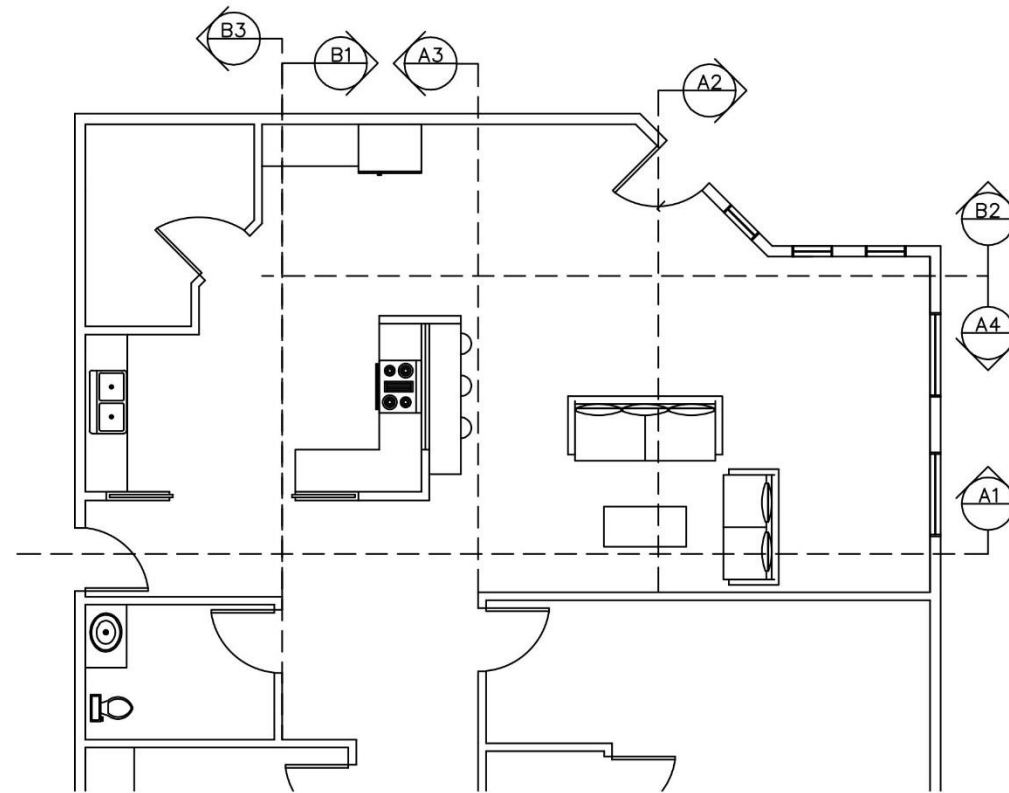
A1 LIVING AREA ELEVATION
SCALE: $\frac{1}{8}''=1'-0''$



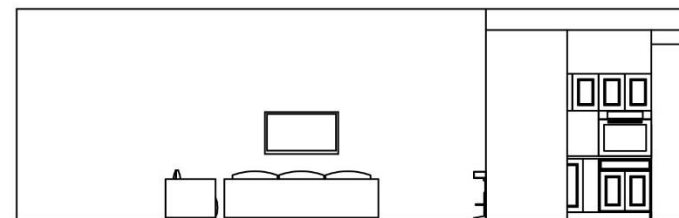
B1 KITCHEN ELEVATION
SCALE: $\frac{1}{8}''=1'-0''$



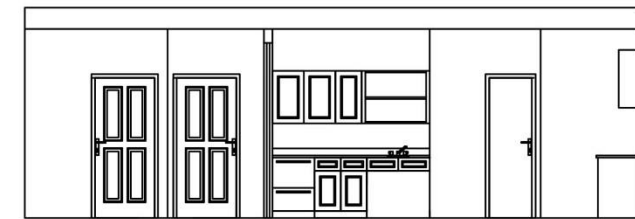
A3 LIVING AREA ELEVATION
SCALE: $\frac{1}{8}''=1'-0''$



B2 KITCHEN ELEVATION
SCALE: $\frac{1}{8}''=1'-0''$

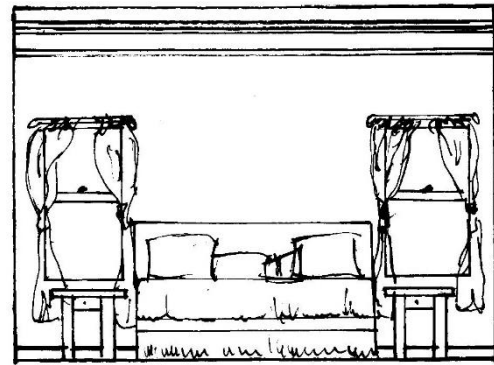


A4 LIVING AREA ELEVATION
SCALE: $\frac{1}{8}''=1'-0''$

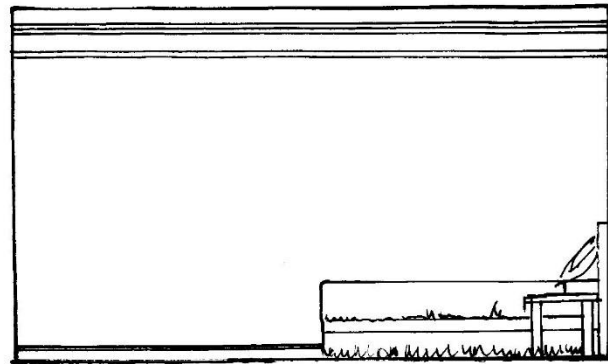


B3 KITCHEN ELEVATION
SCALE: $\frac{1}{8}''=1'-0''$

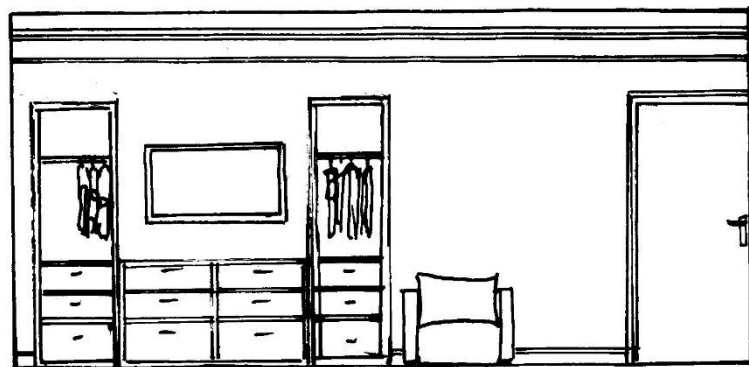
ELEVATIONS



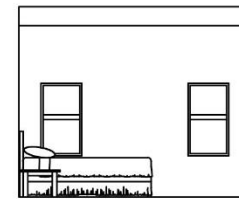
C1 BEDROOM ELEVATION
SCALE: 1/4" = 1'-0"



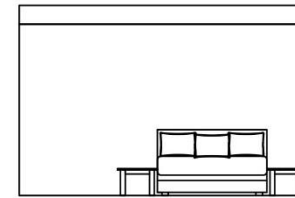
C2 BEDROOM ELEVATION
SCALE: 1/4" = 1'-0"



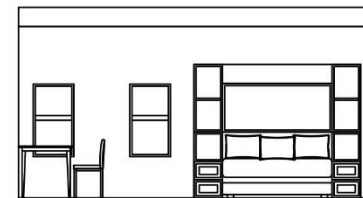
C4 BEDROOM ELEVATION
SCALE: 1/4" = 1'-0"



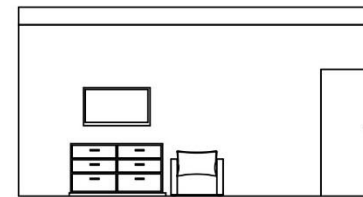
C1 BEDROOM ELEVATION
SCALE: 3/8" = 1'-0"



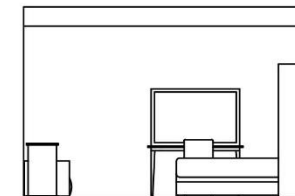
C2 BEDROOM ELEVATION
SCALE: 3/8" = 1'-0"



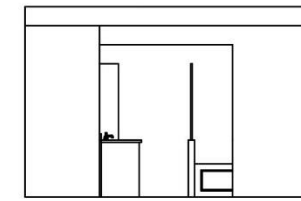
C3 BEDROOM ELEVATION
SCALE: 3/8" = 1'-0"



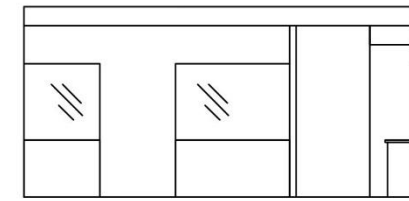
C4 BEDROOM ELEVATION
SCALE: 3/8" = 1'-0"



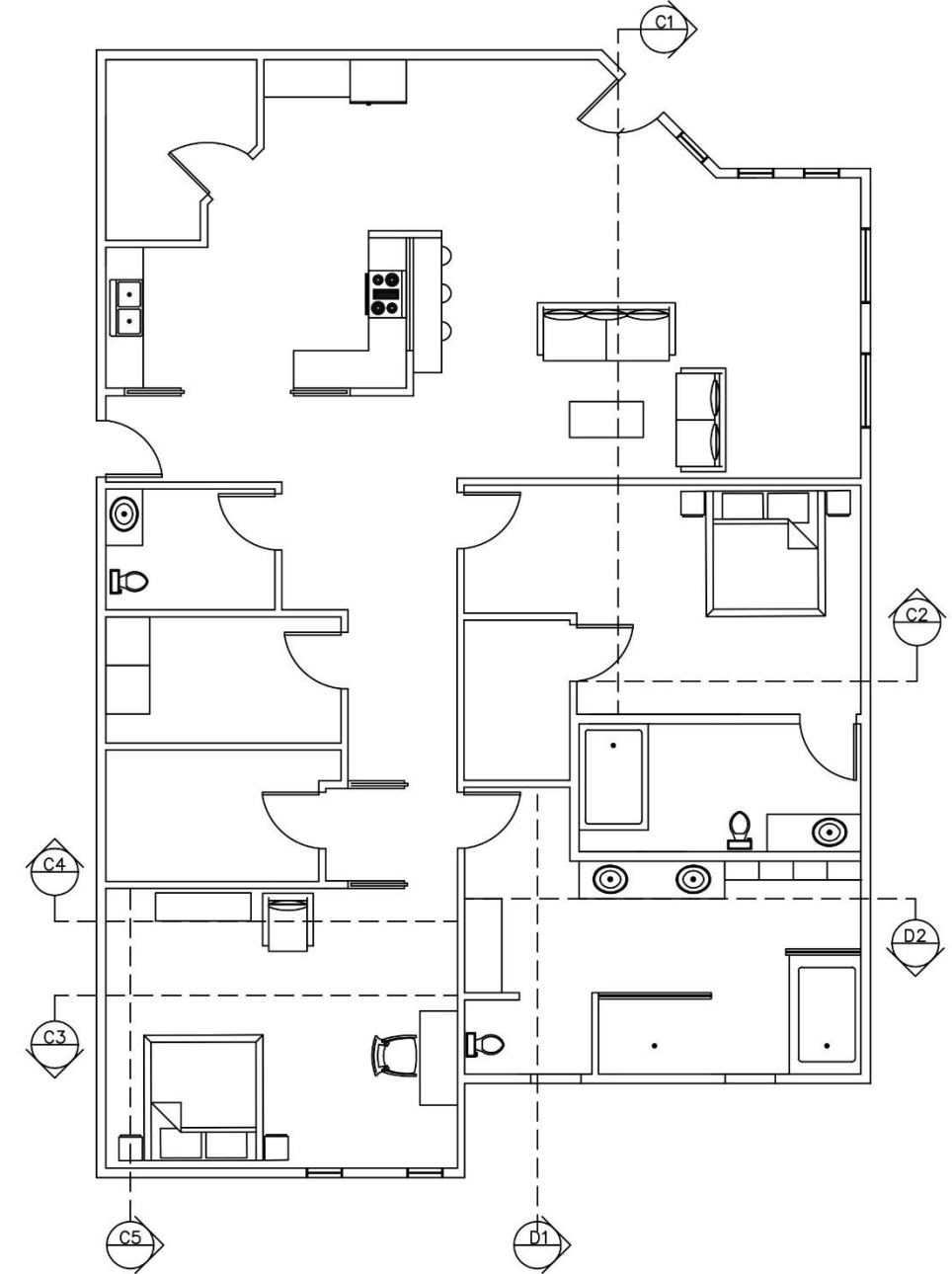
C5 BEDROOM ELEVATION
SCALE: 3/8" = 1'-0"



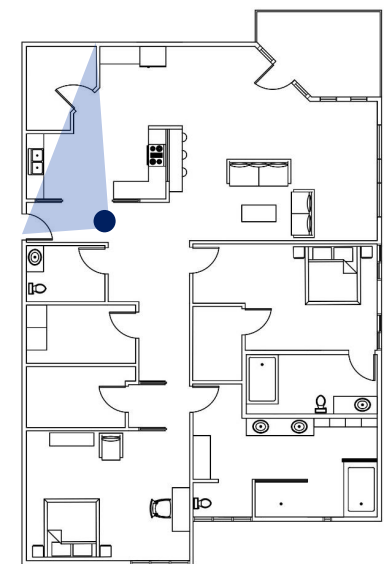
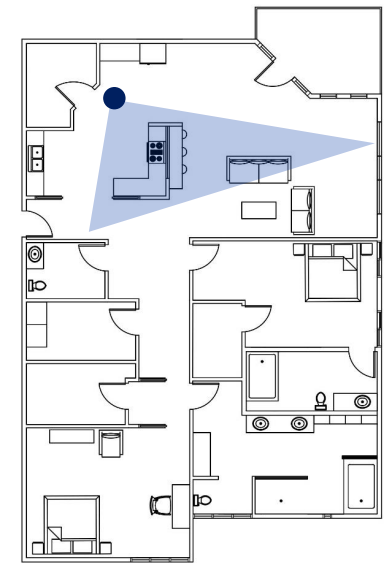
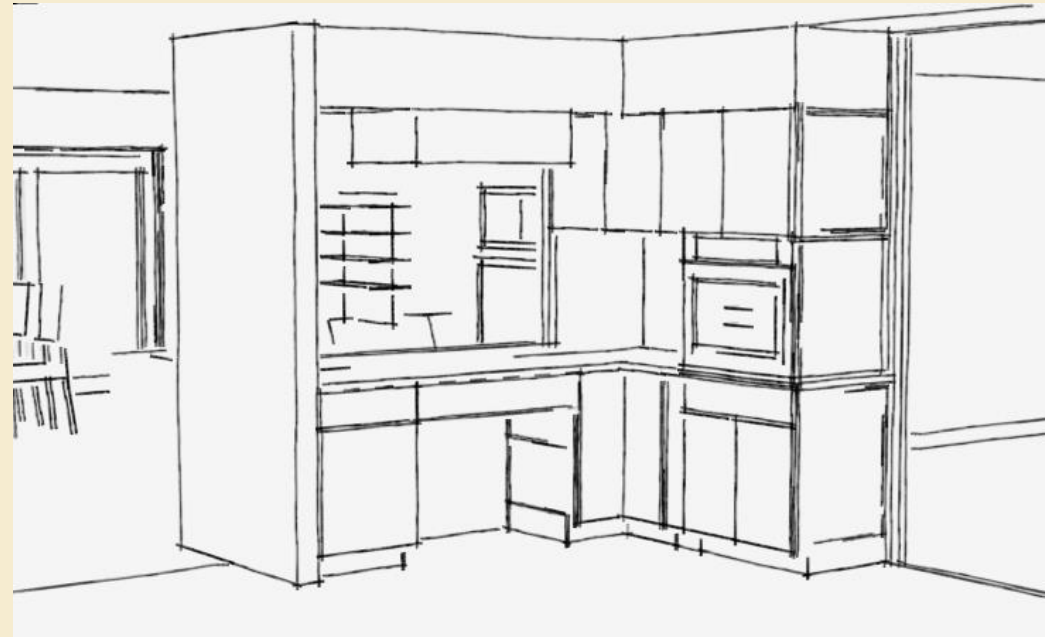
D1 BATH ELEVATION
SCALE: 3/8" = 1'-0"



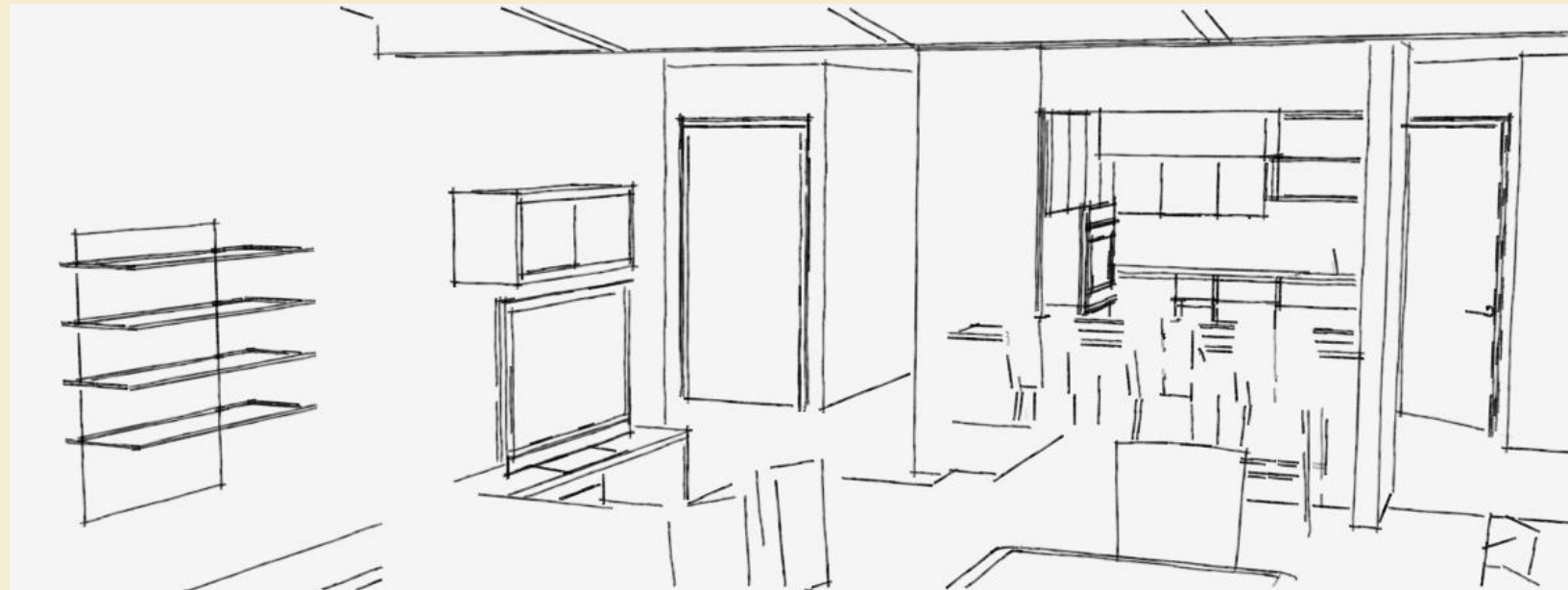
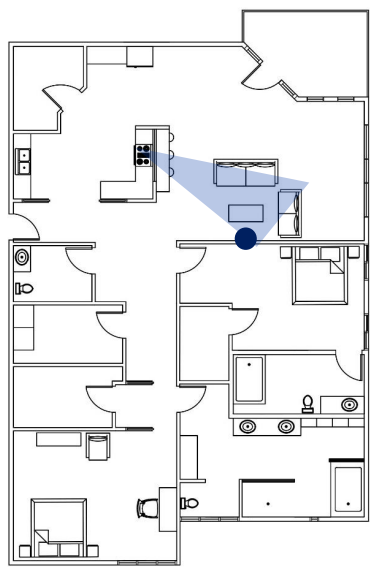
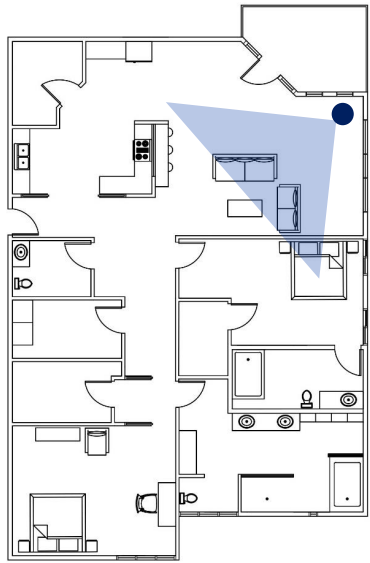
D2 BATH ELEVATION
SCALE: 3/8" = 1'-0"

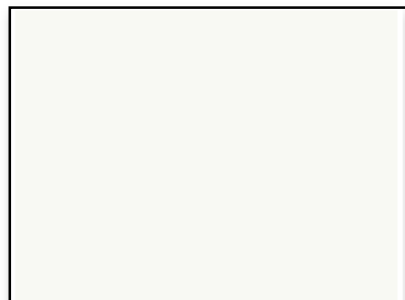


PERSPECTIVE SKETCHES



PERSPECTIVE SKETCHES





SW 7757 High Reflective White

Interior / Exterior

Color Family	Whites
RGB Value	R-248 G-249 B-243
Hexadecimal Value	#F8F9F3
LRV	94



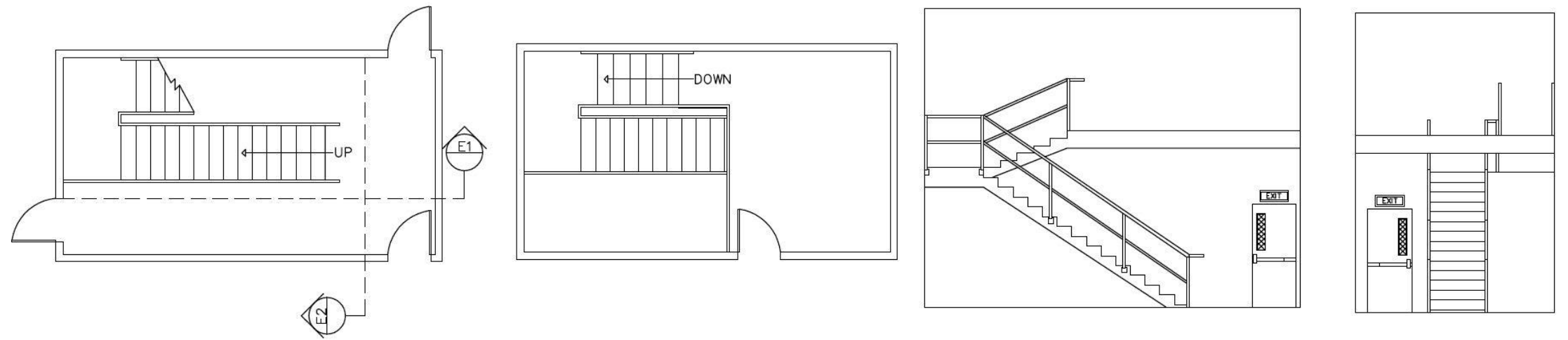
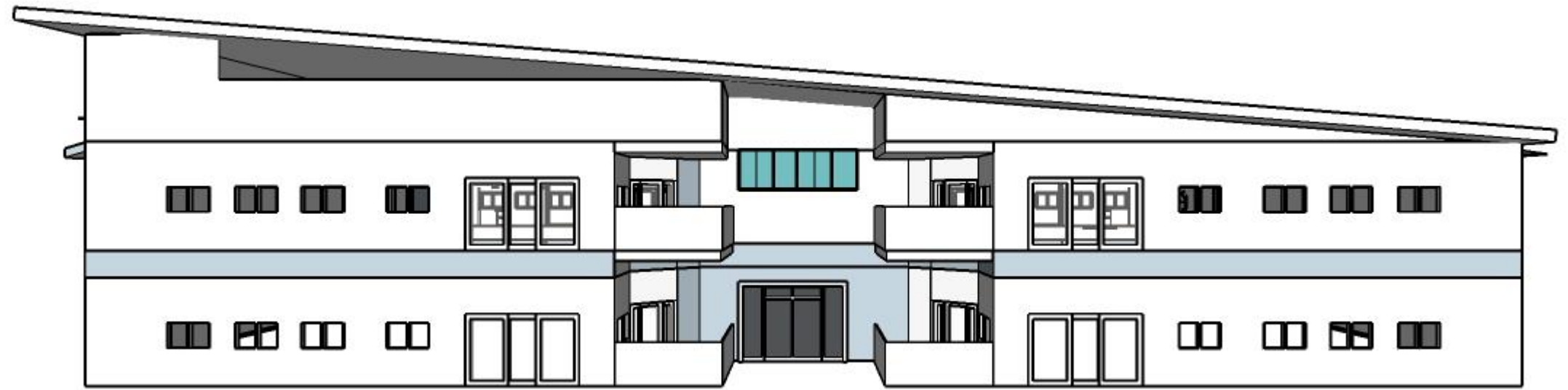
ARCHITECTURAL FINISHES

Standard Unit Finishes & Architectural Features

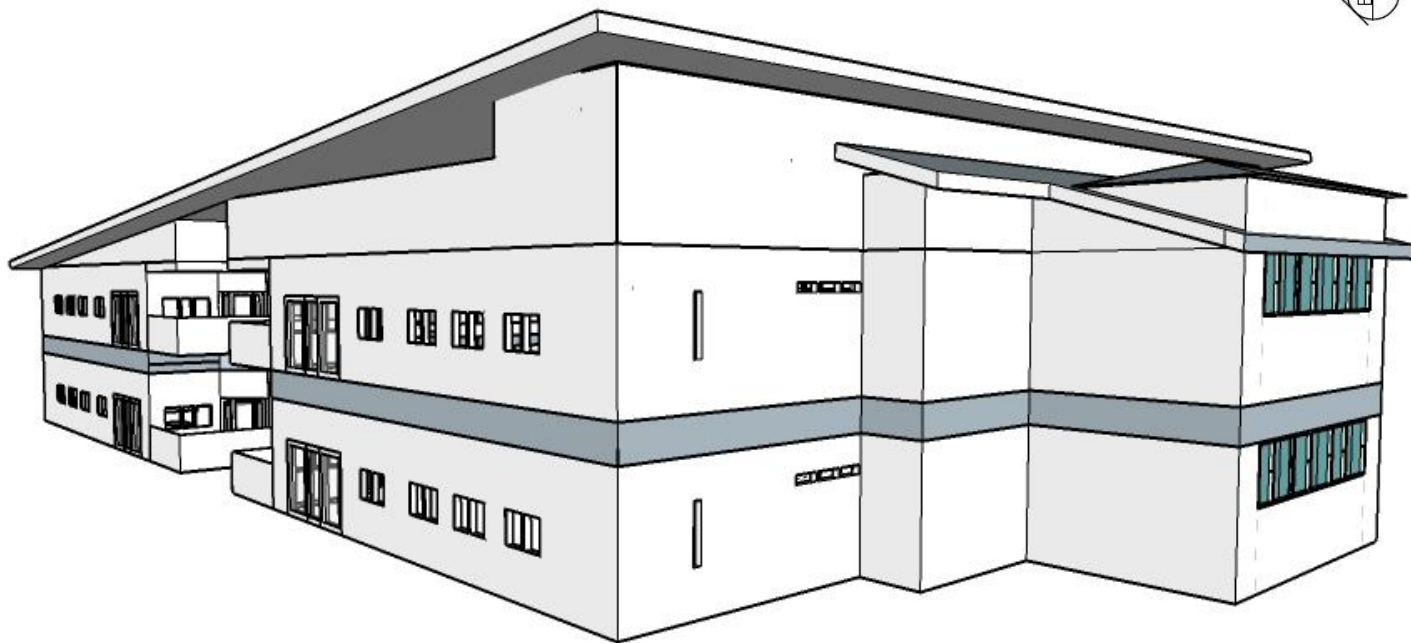
- Interior wall finish-white paint
 - Possibly a naturally finished accent wall
- Beamed wood paneled ceiling in living area
- Dark wood floors throughout unit
 - Slate tiled kitchen floor
 - White ceramic tile in bathrooms
- Pocket doors entering master bedroom vestibule
- Fiberglass interior doors



Exterior Massing Study

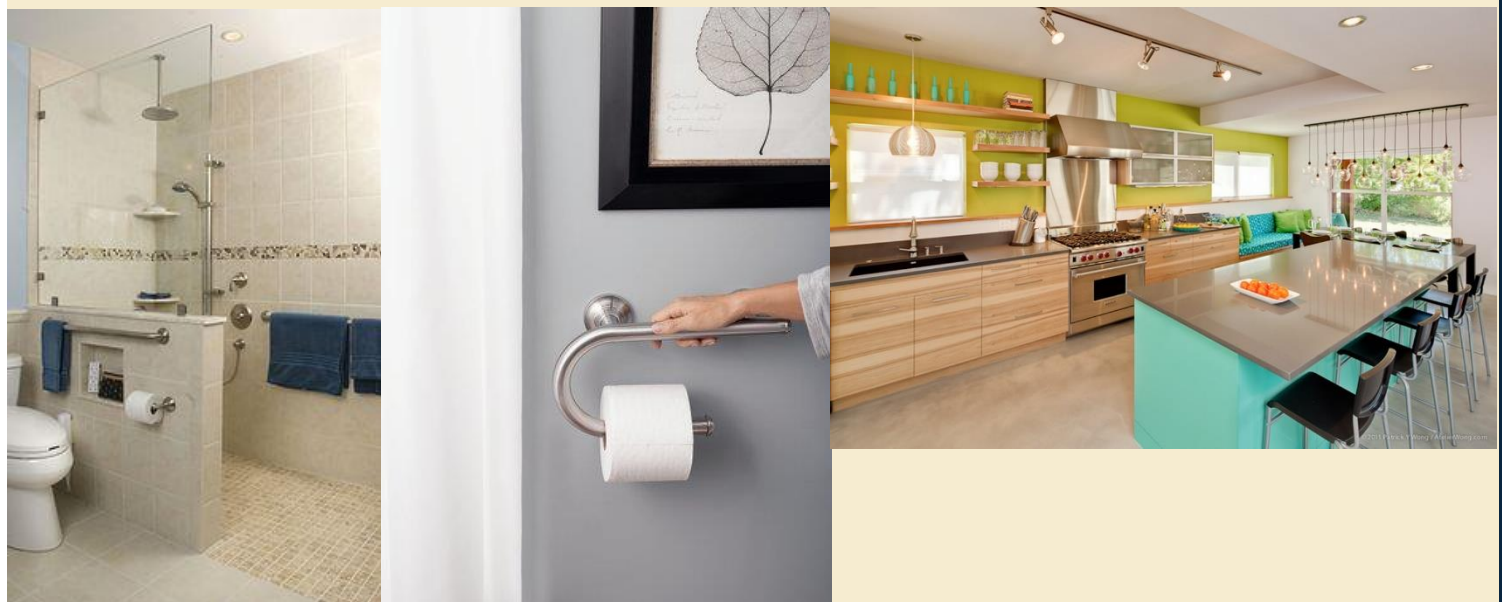


Stair Plans & Elevations



Universal Design Strategies

- Large barrier-free open spaces
- Pocket doors allow for additional aids in easy circulation when left open
- Luxury-sized master bathroom with:
 - Sink base cabinets designed for people with wheelchairs
 - Roll-in shower with trench drain
 - Walls equipped with blocking for future grab bar installation
- Walk-in closets and kitchen pantry
- ADA compliant stove top with appropriate wheelchair clearance



Historical Precedents



- Windows with large panes with no mullions
- Mid-century modern iconic front door
- Natural wood paneled living room ceiling with beam supports
- Unadorned architectural features
- Solid surface interior doors
- Unadorned cabinetry

Human Behavior In Design

- The human need for connection was addressed during the planning and design stage by designing a space whose sliding doors function in a way that allow for the option to have greater spatial connection and fluidity.
- As we age, our behaviors and needs change. Designing a space that will have end-users “aging in place,” required distal thinking when making design decisions and considerations.
 - Larger bedrooms that could accommodate various medical-aid equipment, or function for various purposes.
 - Blocking within bathroom walls for future grab bar installation.

