

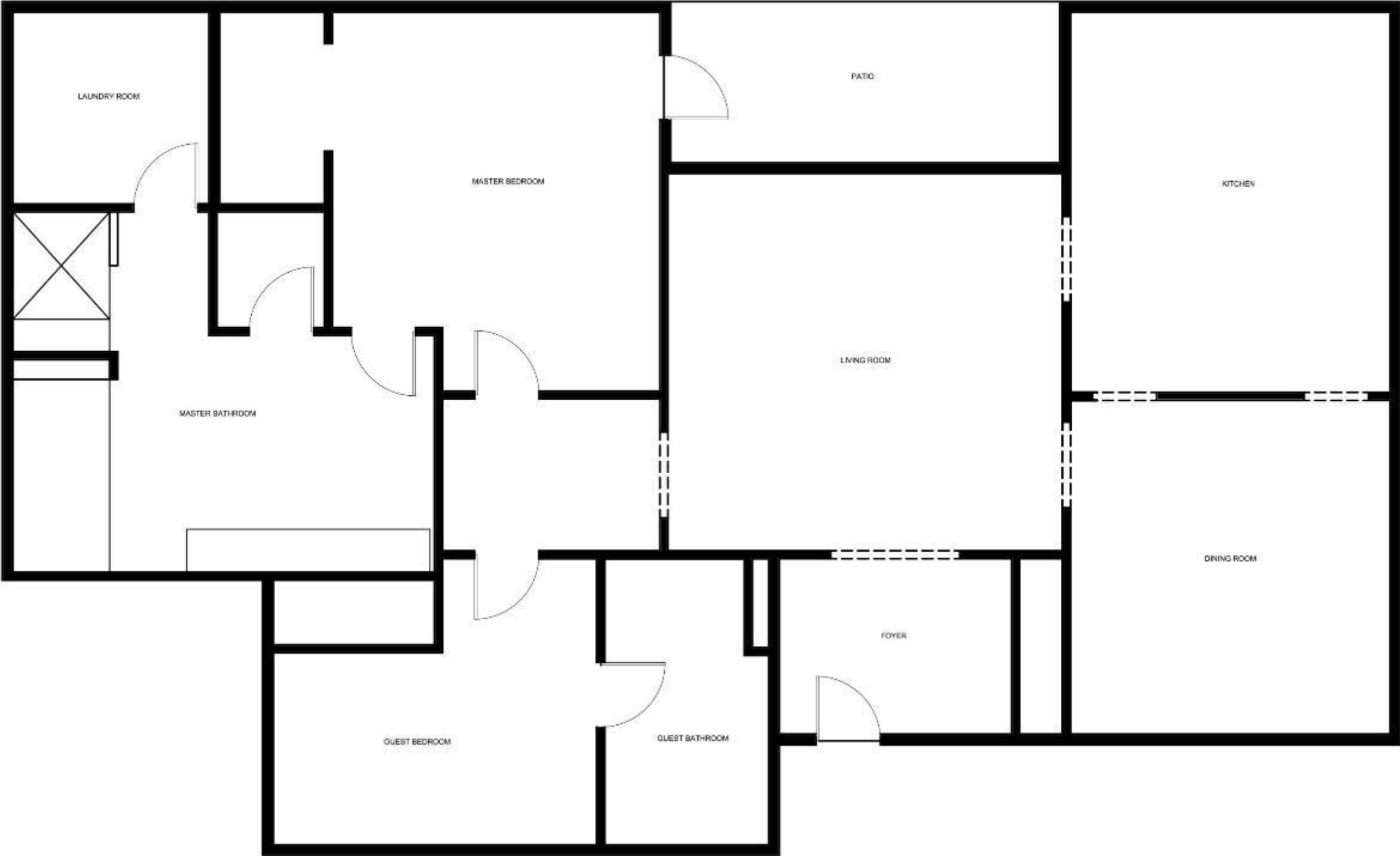
IDSN 4500

UNIVERSAL DESIGN

PORTFOLIO TWO

GARRET WARRICK

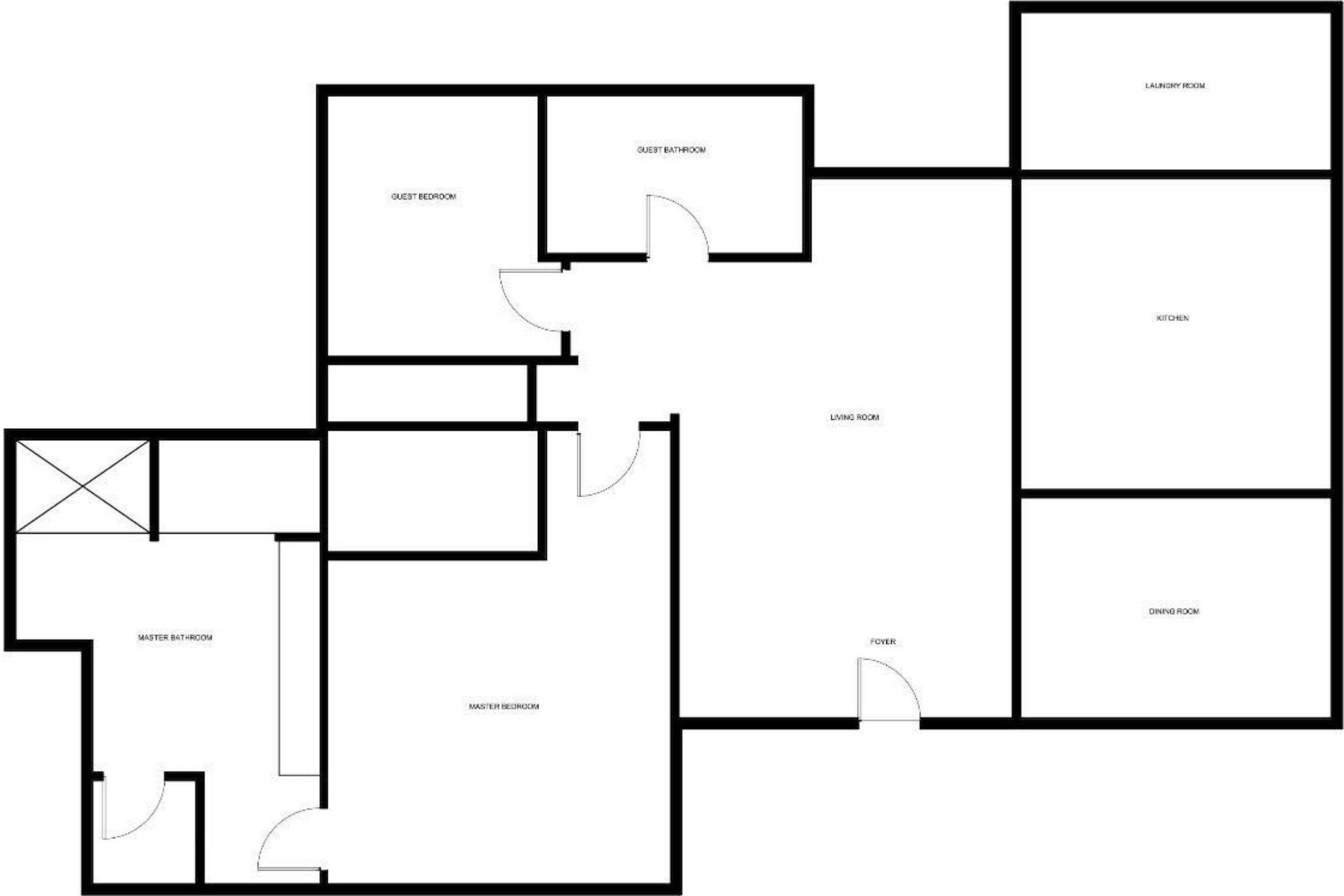
DEVELOPED FLOOR PLAN OPTION I *NOT TO SCALE



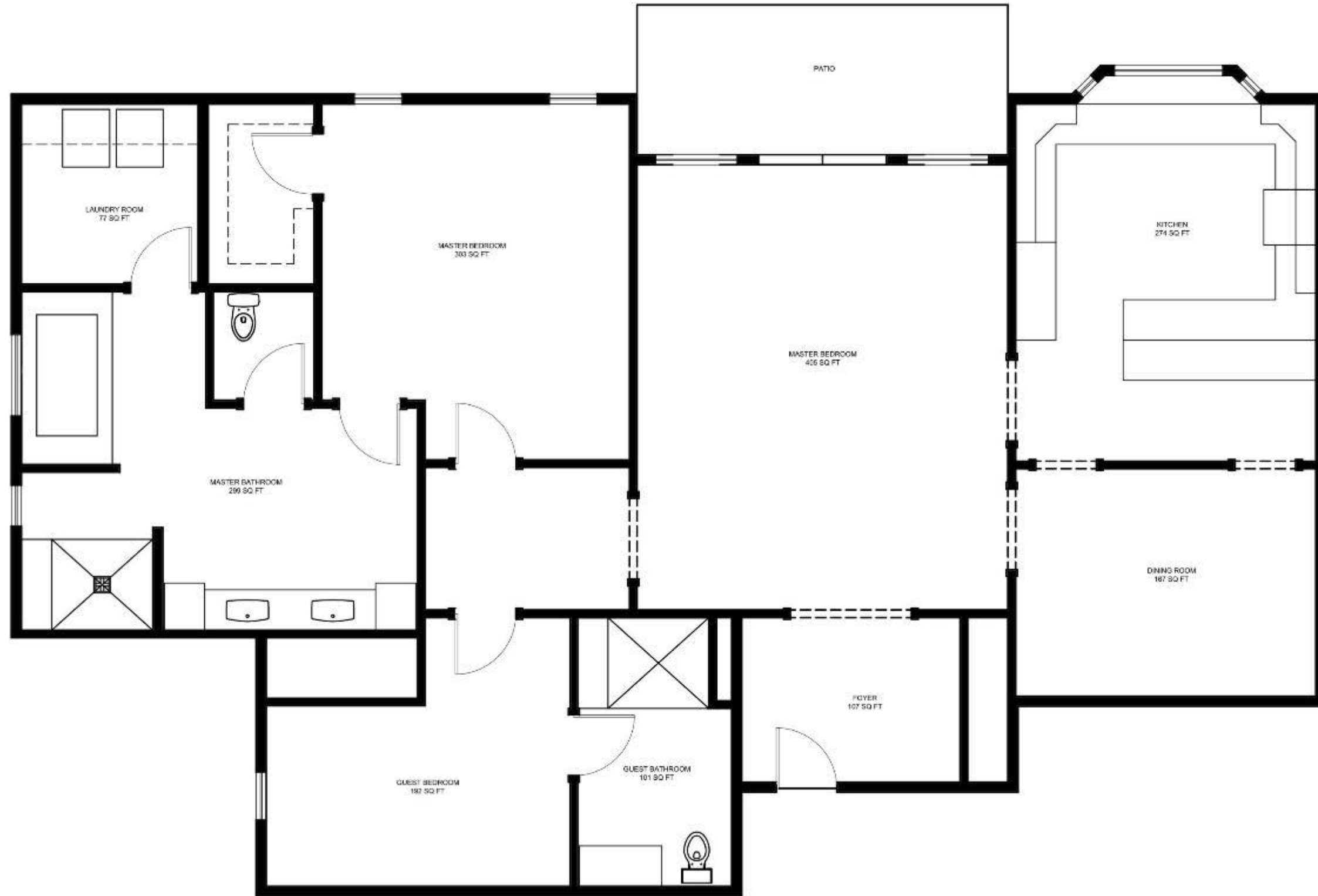
DEVELOPED FLOOR PLAN OPTION 2 *NOT TO SCALE



DEVELOPED FLOOR PLAN OPTION 3 *NOT TO SCALE

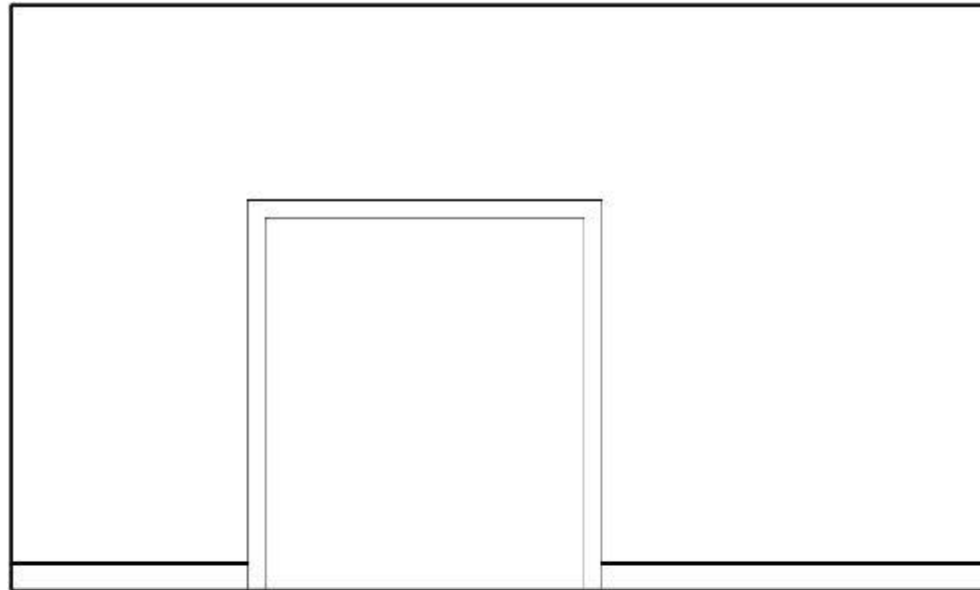


FINAL FLOOR PLAN *NOT TO SCALE

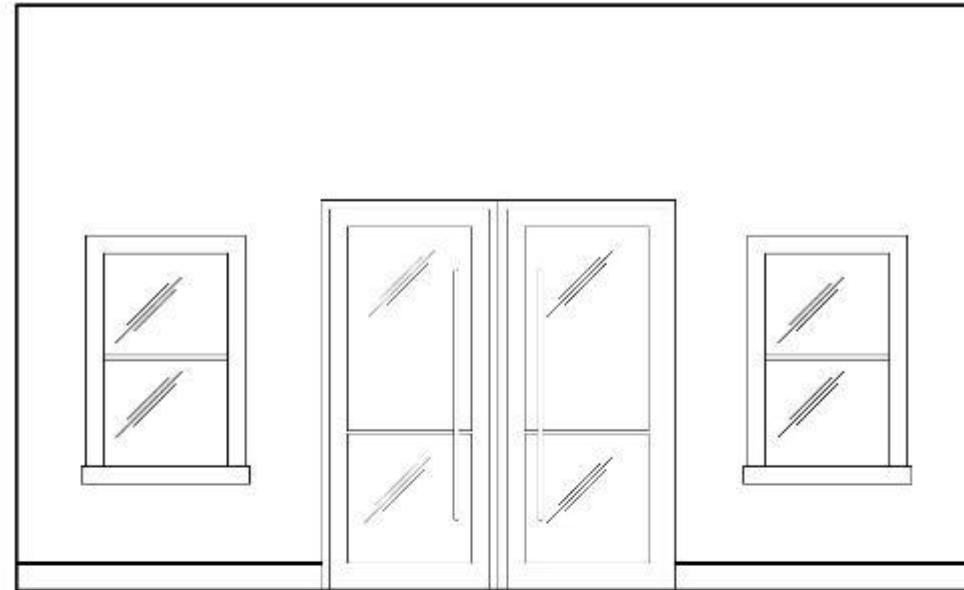


PROPOSED LIVING ROOM ELEVATIONS

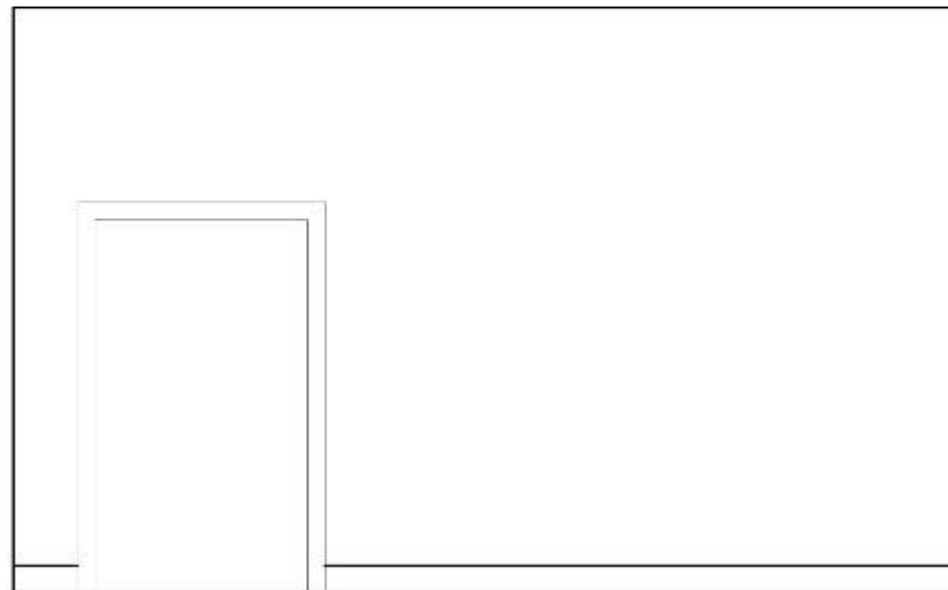
*NOT TO SCALE



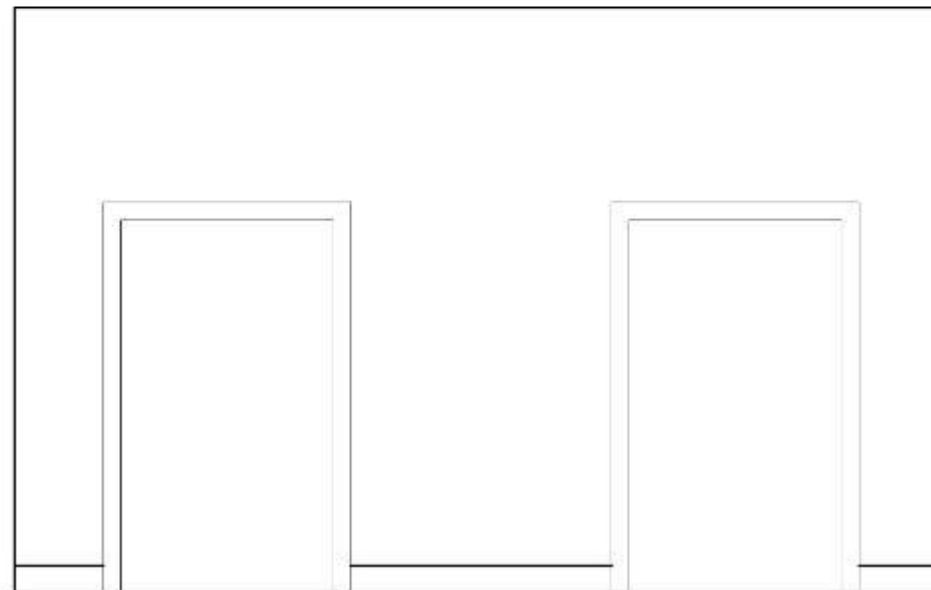
A LIVING ROOM SOUTH ELEVATION



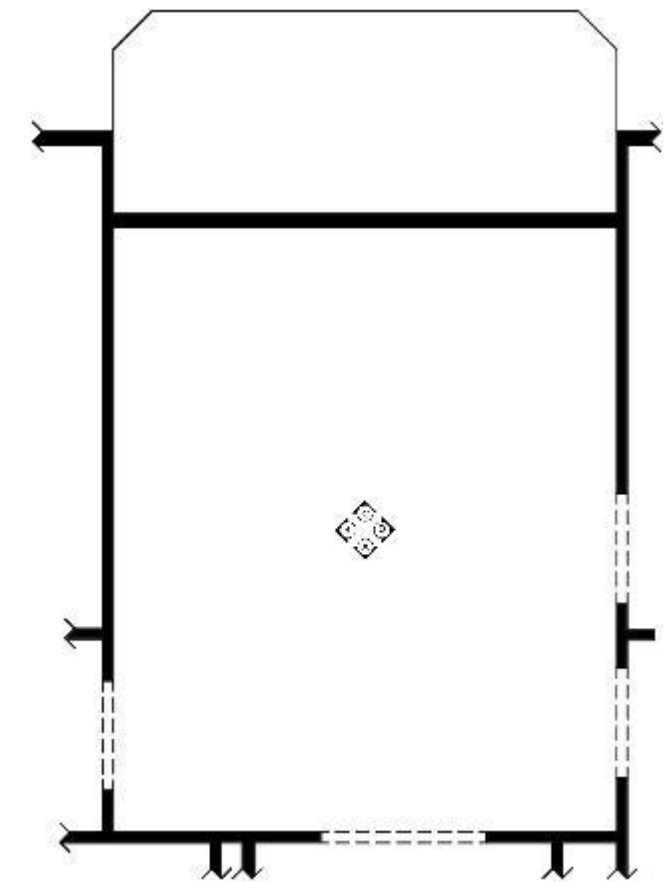
C LIVING ROOM NORTH ELEVATION



B LIVING ROOM EAST ELEVATION

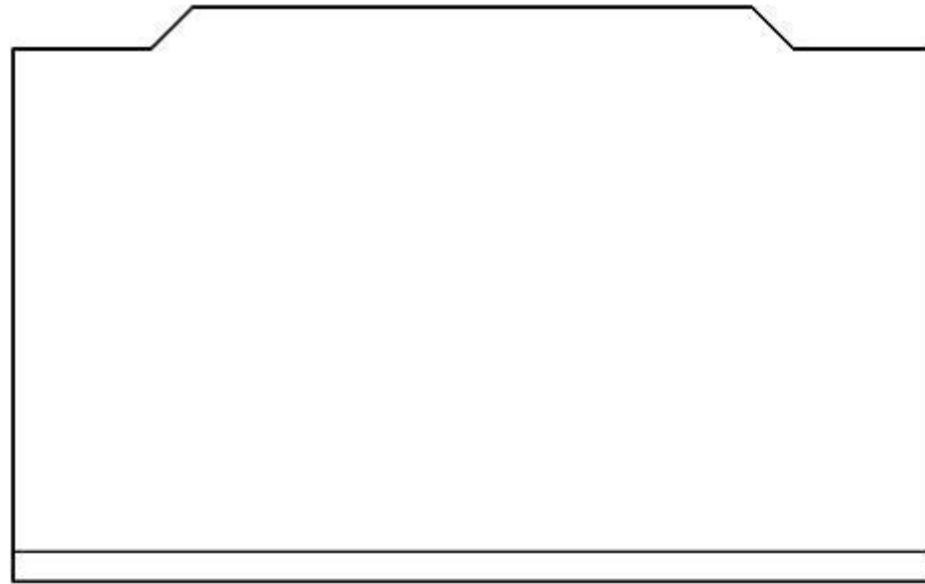


C LIVING ROOM WEST ELEVATION

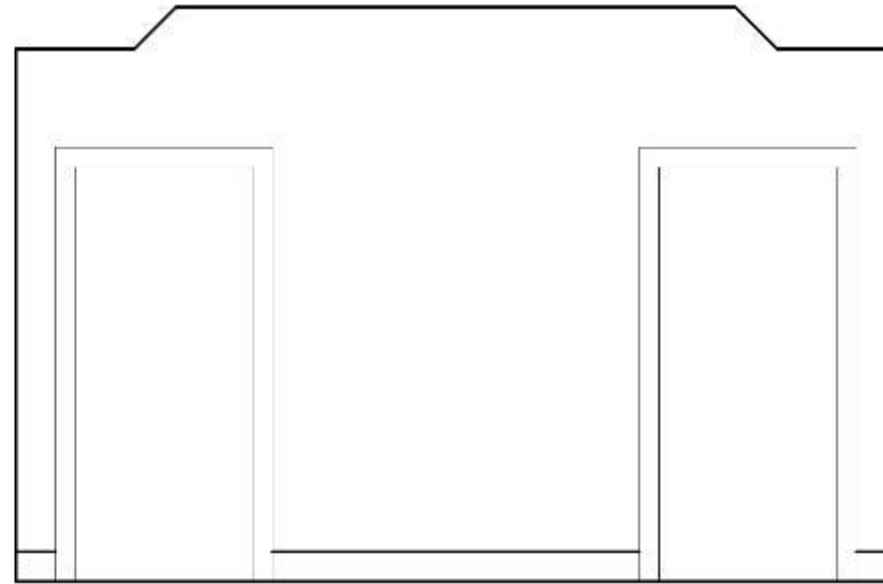


PROPOSED DINING ROOM ELEVATIONS

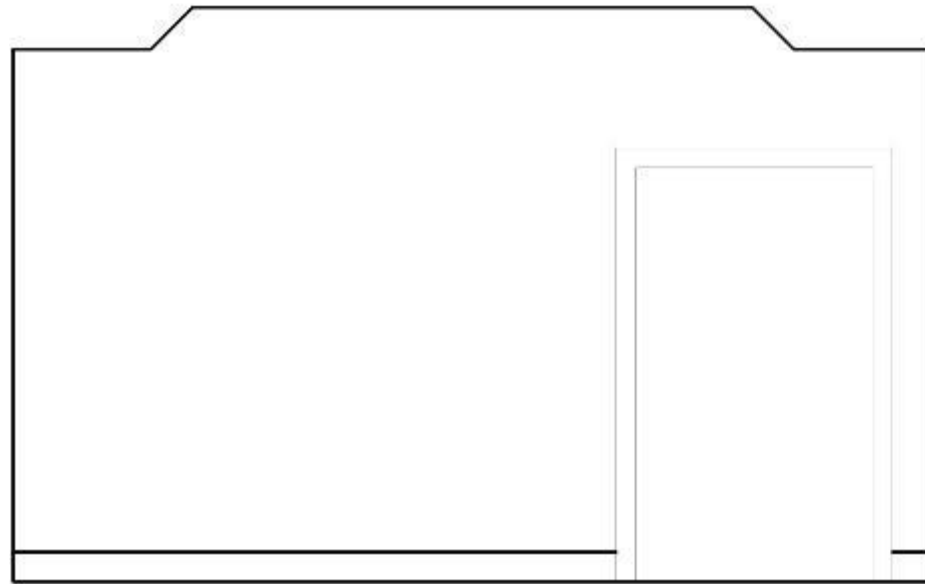
*NOT TO SCALE



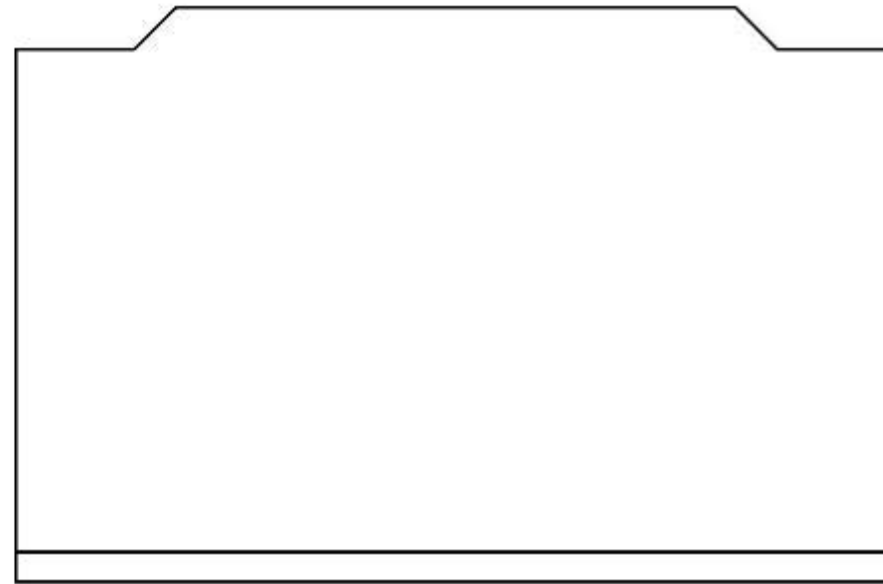
A DINING ROOM SOUTH ELEVATION
SCALE: 1/4"



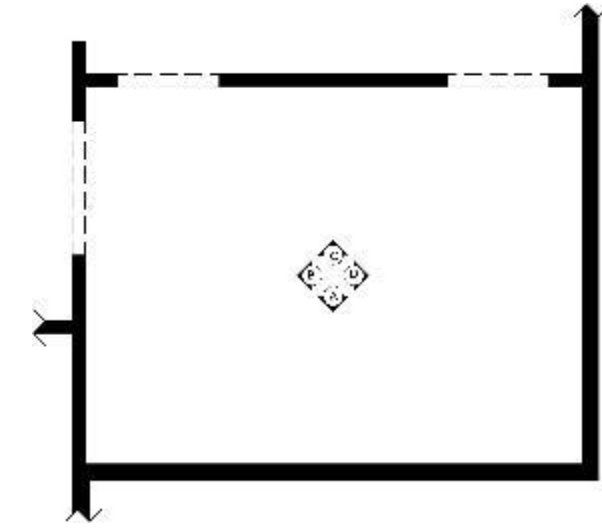
C DINING ROOM NORTH ELEVATION
SCALE: 1/4"



B DINING ROOM WEST ELEVATION
SCALE: 1/4"

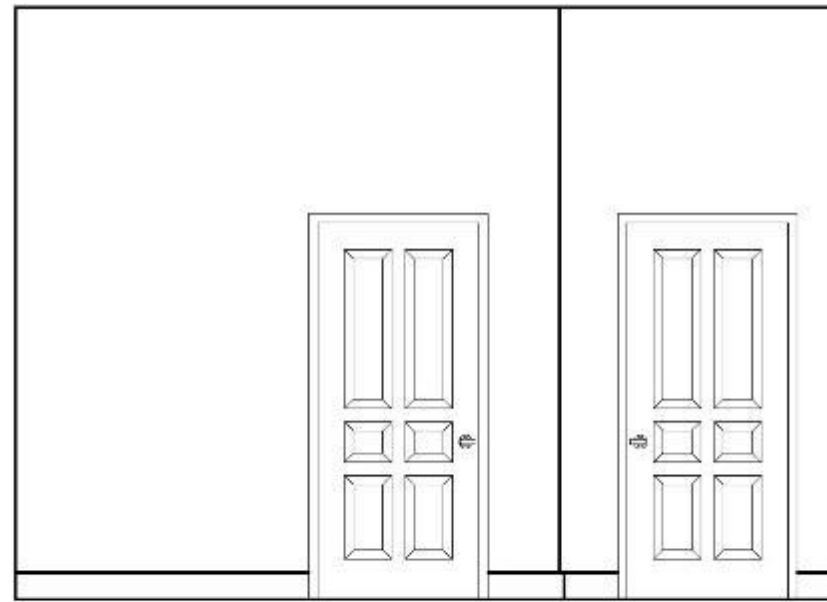


D DINING ROOM EAST ELEVATION
SCALE: 1/4"

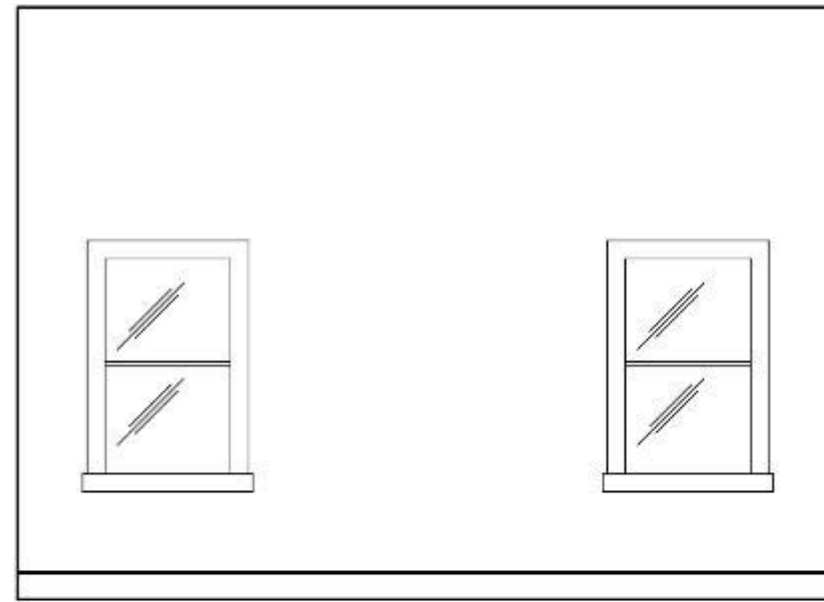


PROPOSED MASTER BEDROOM ELEVATIONS

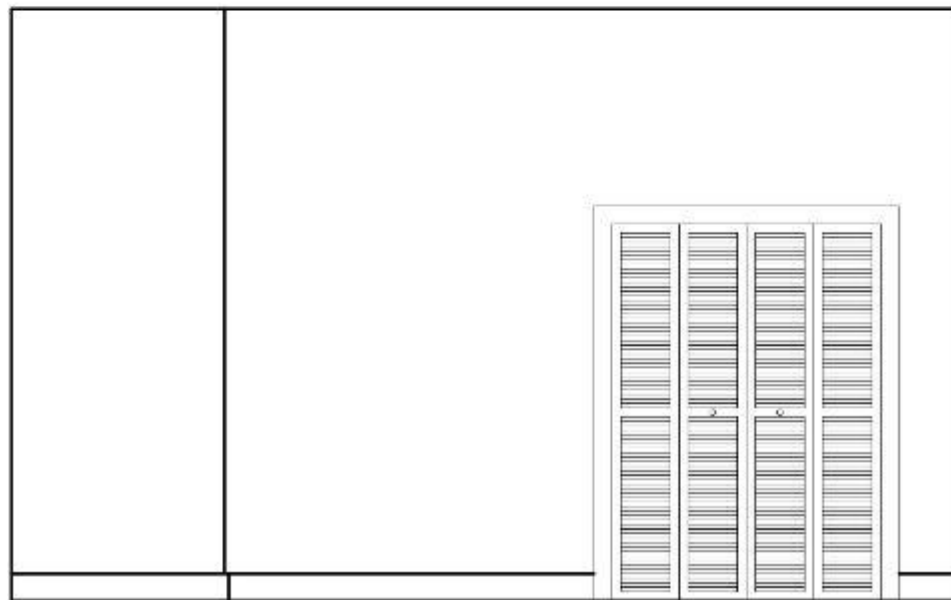
*NOT TO SCALE



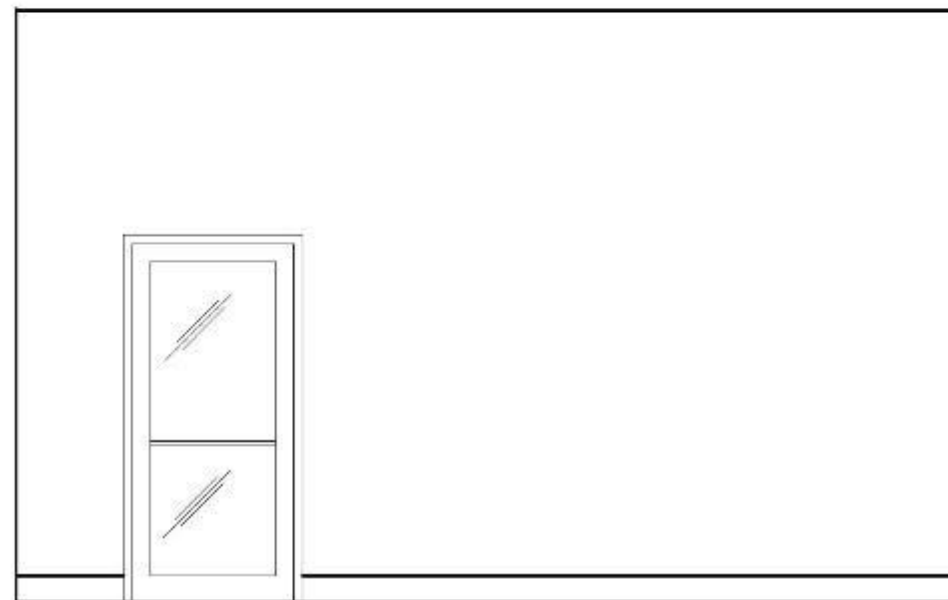
A MASTER BEDROOM SOUTH ELEVATION
SCALE: 1/4" = 1'-0"



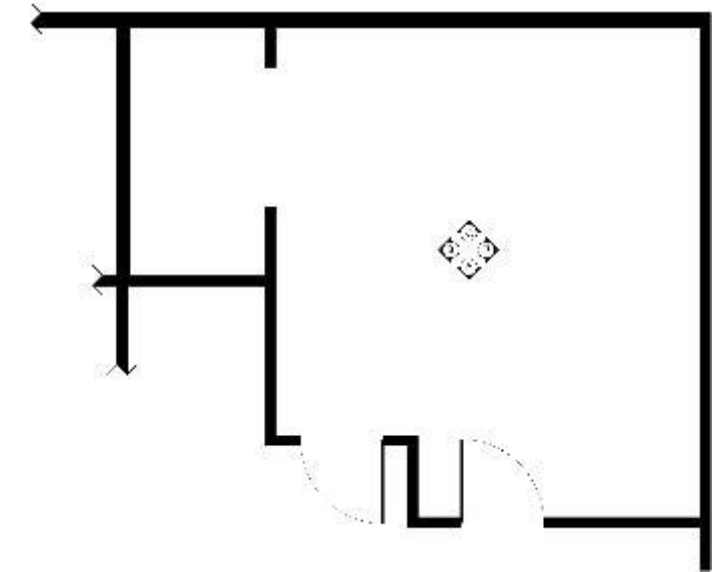
C MASTER BEDROOM NORTH ELEVATION
SCALE: 1/4" = 1'-0"



B MASTER BEDROOM WEST ELEVATION
SCALE: 1/4" = 1'-0"

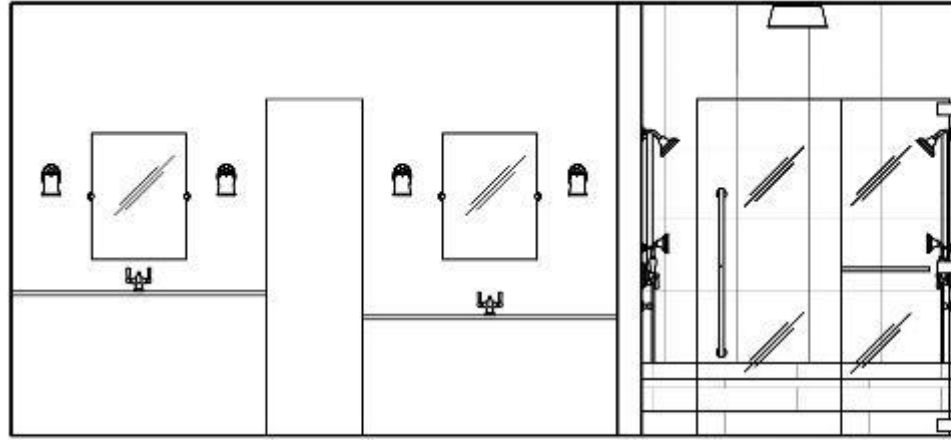


D MASTER BEDROOM EAST ELEVATION
SCALE: 1/4" = 1'-0"

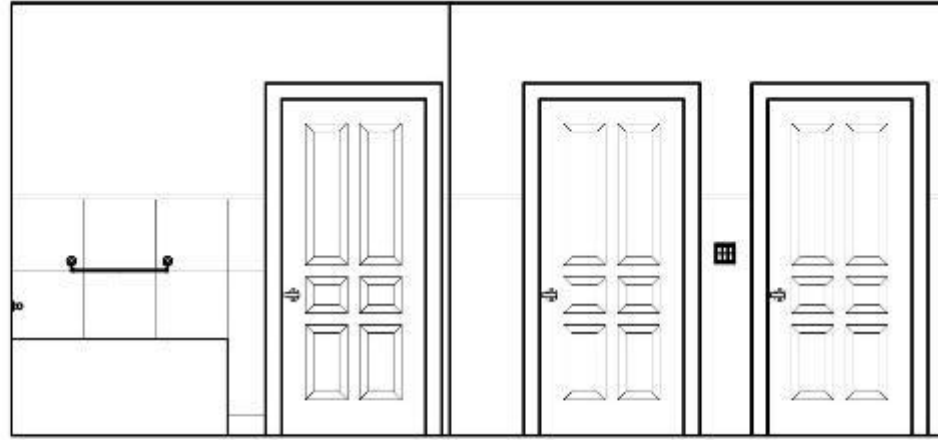


PROPOSED MASTER BATHROOM ELEVATIONS

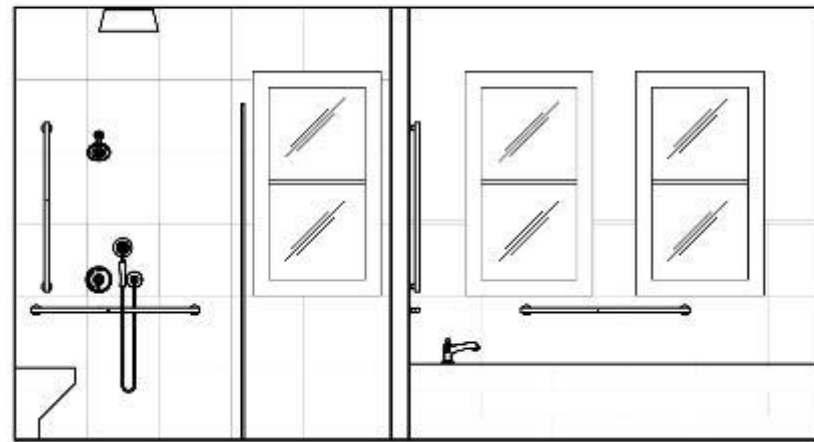
*NOT TO SCALE



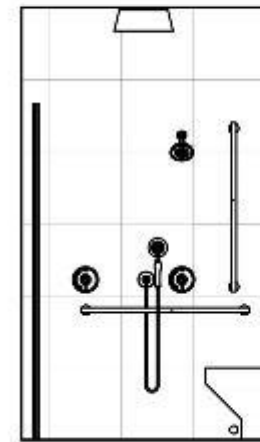
A MASTER BATHROOM NORTH ELEVATION
2024.12.17



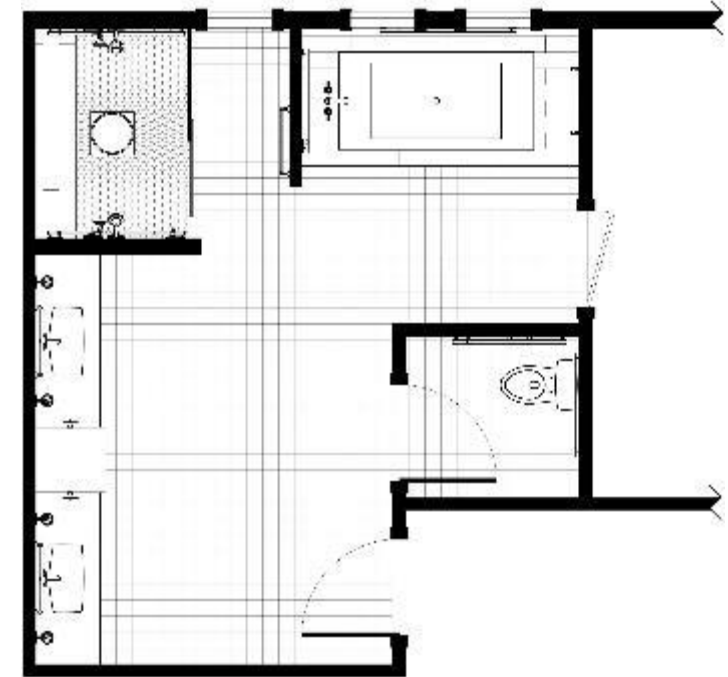
C MASTER BATHROOM SOUTH ELEVATION
2024.12.17



B MASTER BEDROOM EAST ELEVATION
2024.12.17

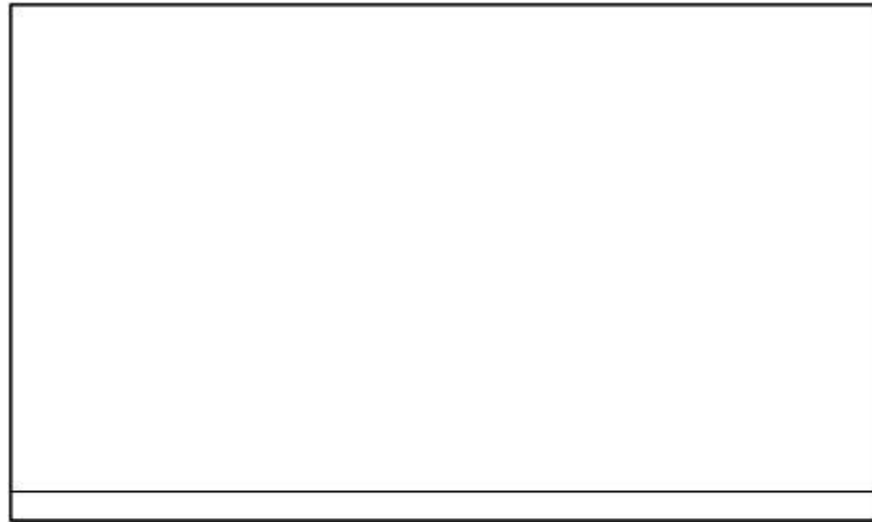


D MASTER BATHROOM SHOWER ELEVATION
2024.12.17

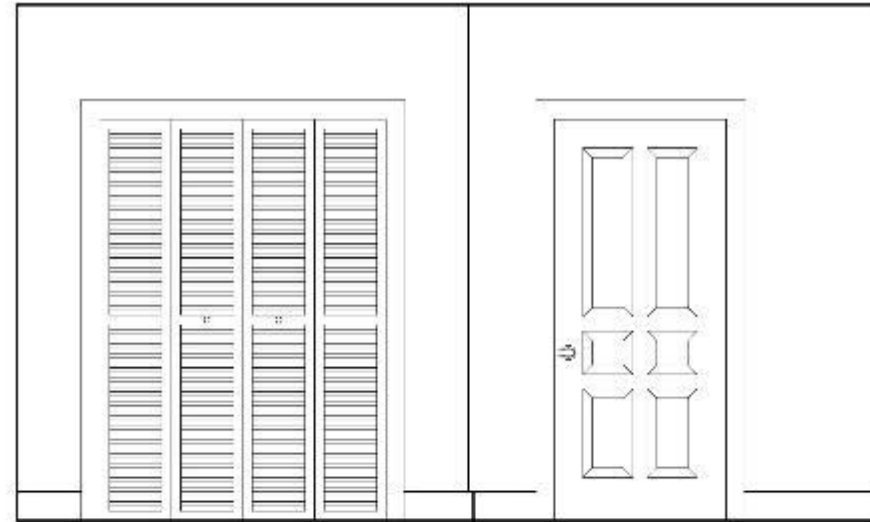


PROPOSED GUEST BEDROOM ELEVATIONS

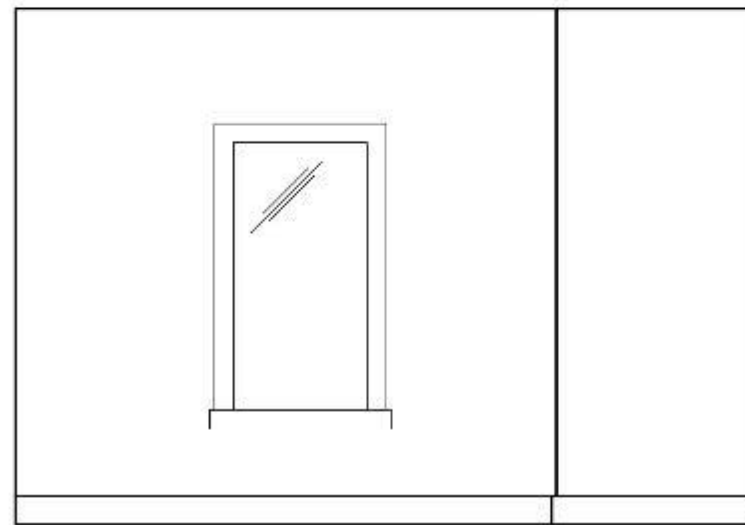
*NOT TO SCALE



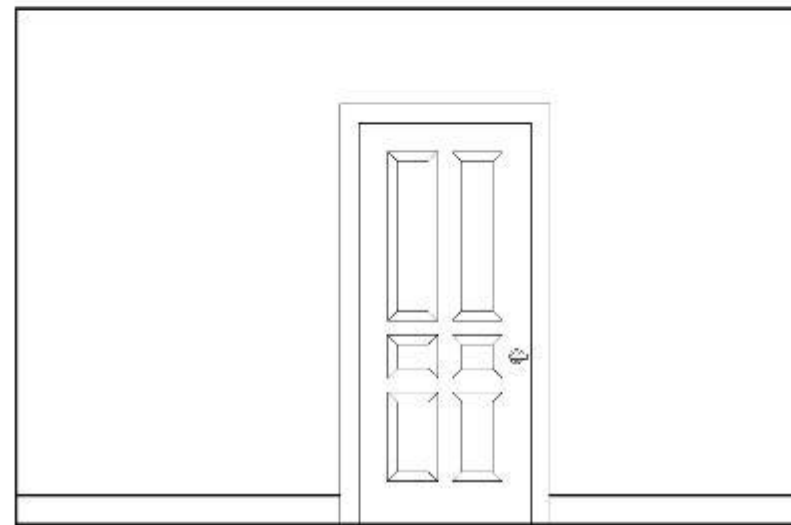
A GUEST BEDROOM SOUTH ELEVATION
SCALE: 1/4" = 1'-0"



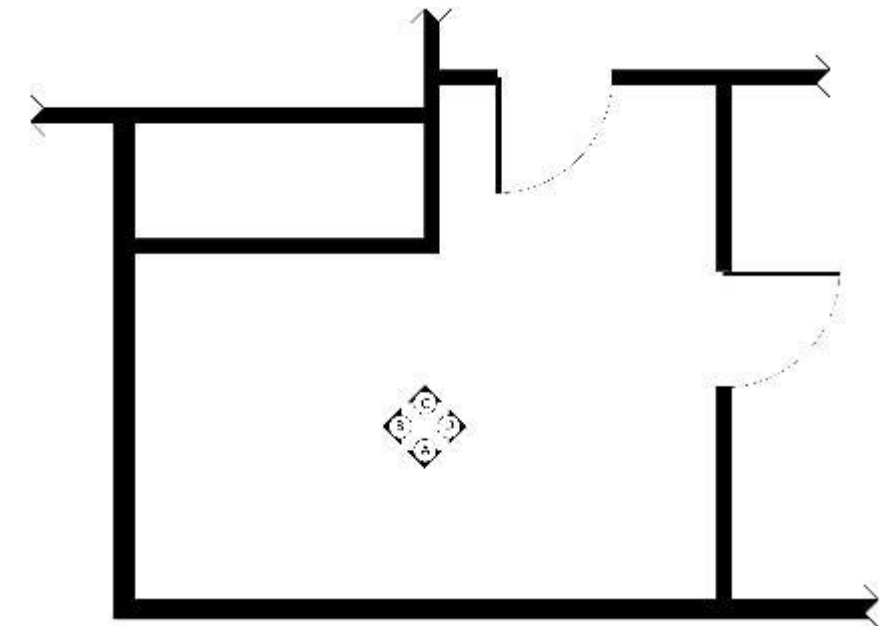
C GUEST BED ROOM NORTH ELEVATION
SCALE: 1/4" = 1'-0"



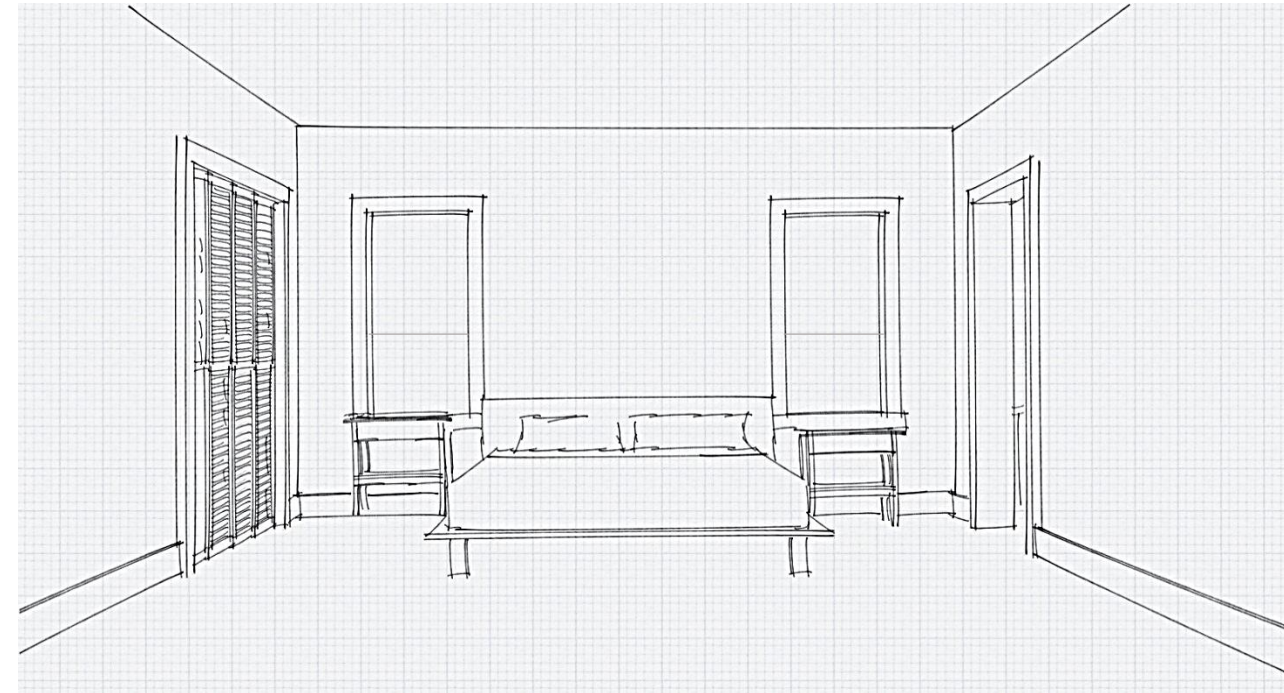
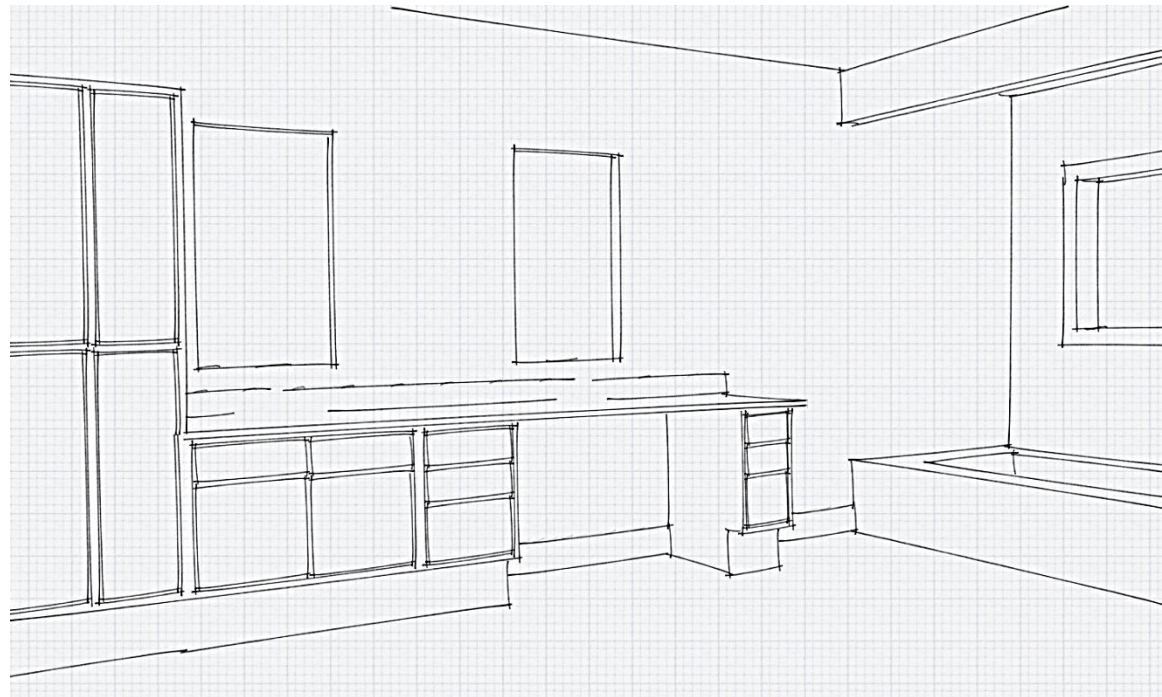
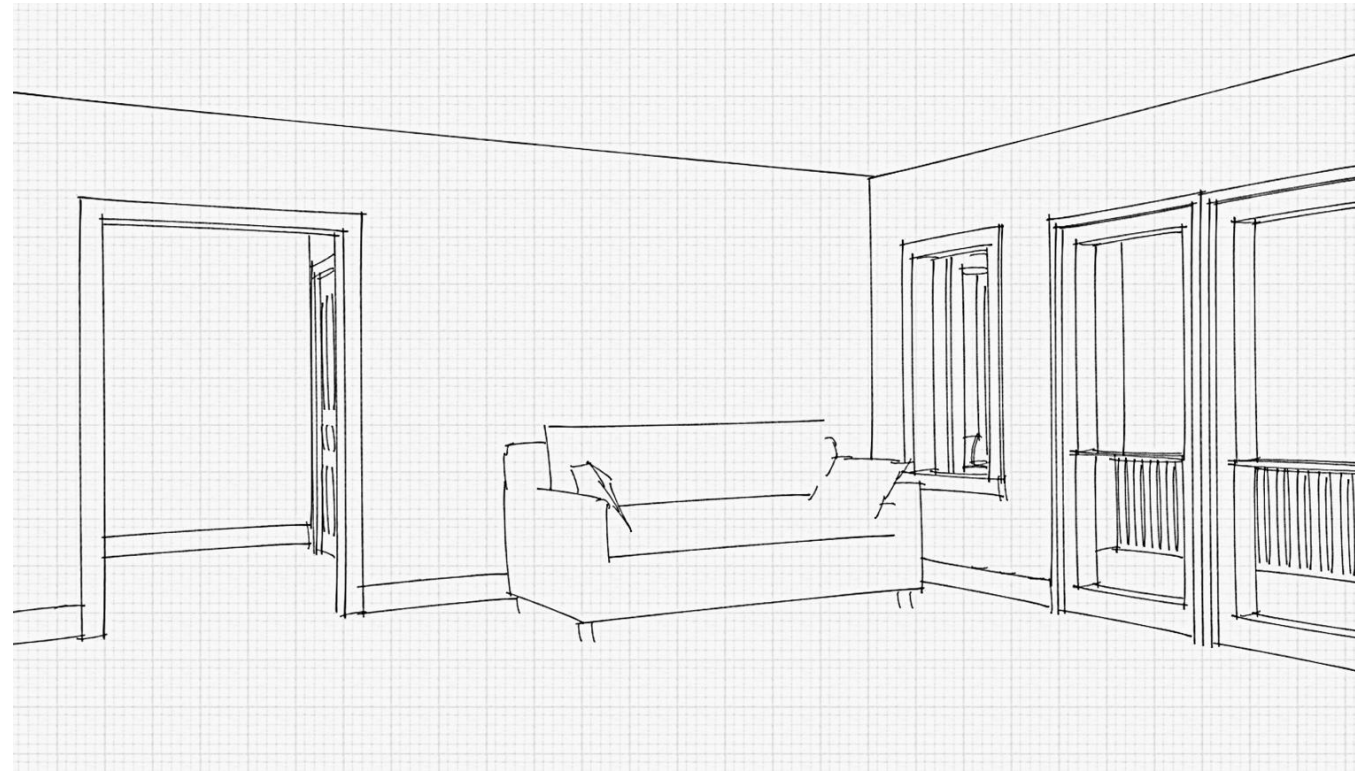
B GUEST BEDROOM WEST ELEVATION
SCALE: 1/4" = 1'-0"



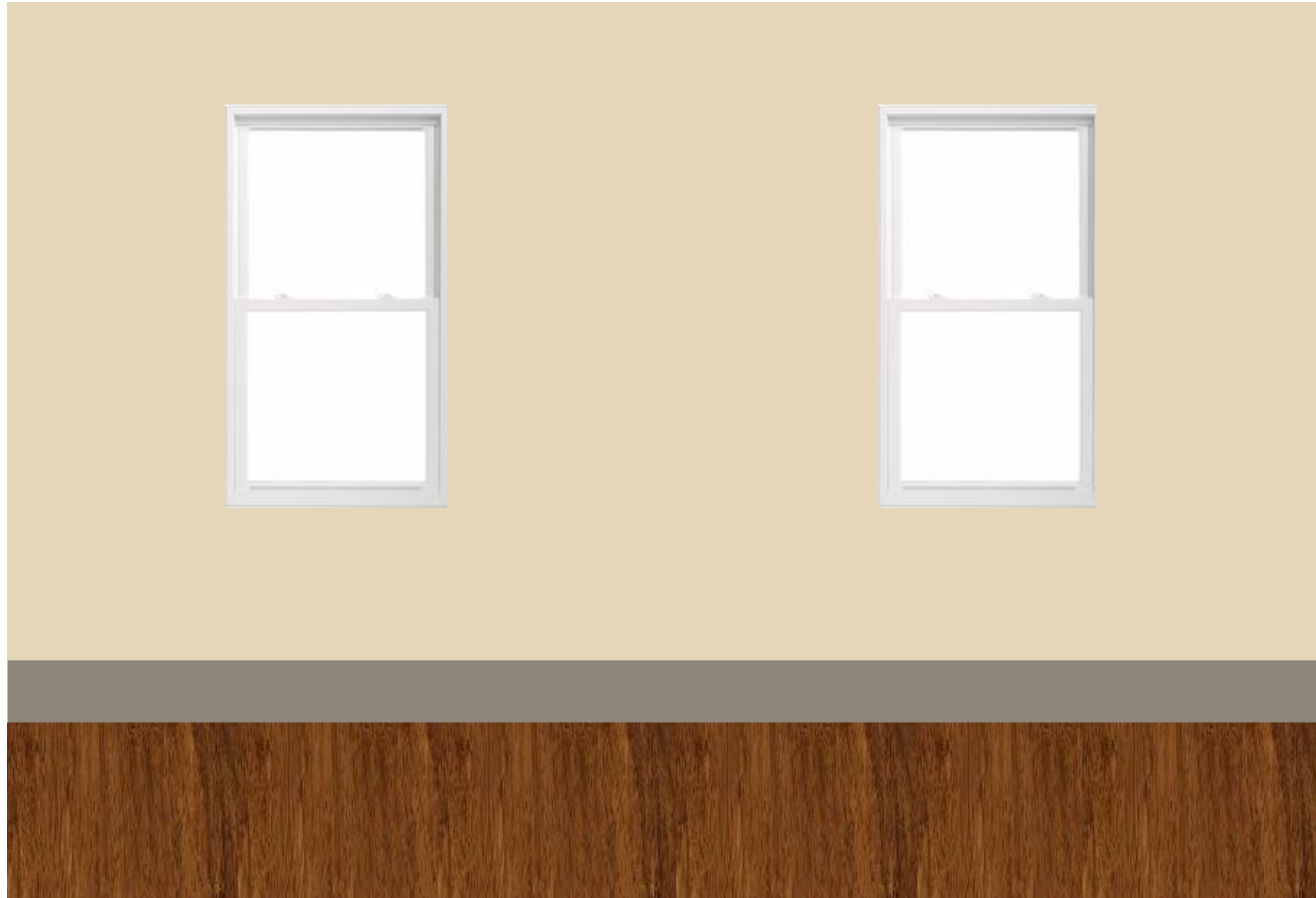
D GUEST BATHROOM EAST ELEVATION
SCALE: 1/4" = 1'-0"



PROPOSED PERSPECTIVES LIVING ROOM/MASTER SUITE



PRELIMINARY ARCHITECTURAL FINISHES

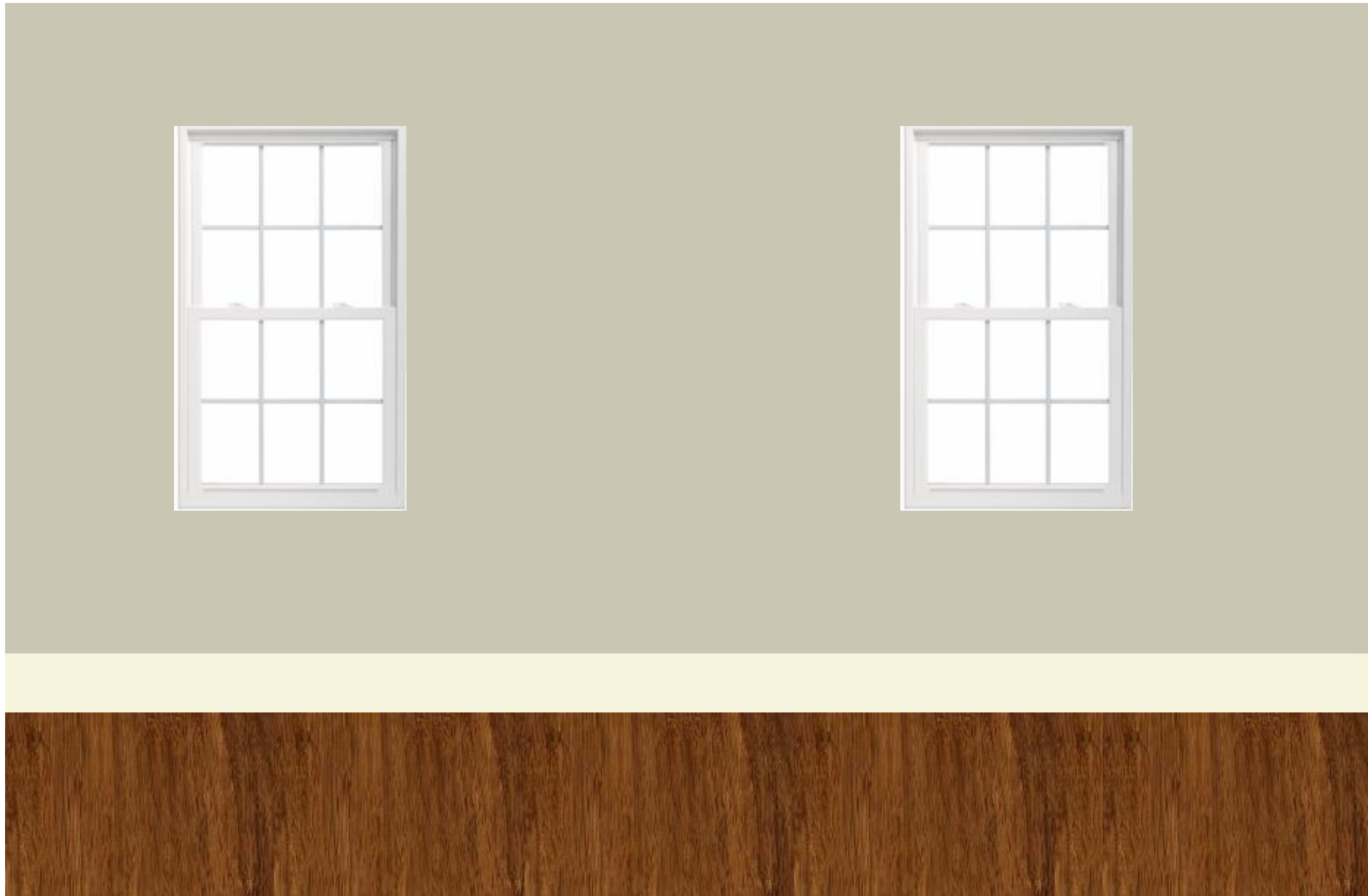


TWISTED OAK PATH - BENJAMIN MOORE
(WALLS)

SQUIRREL TAIL - BENJAMIN MOORE
(TRIM)

SYNERGY ONE BAMBOO FLOORING - TEREGRIN

PRELIMINARY ARCHITECTURAL FINISHES (ALTERNATE COLOR SCHEME)

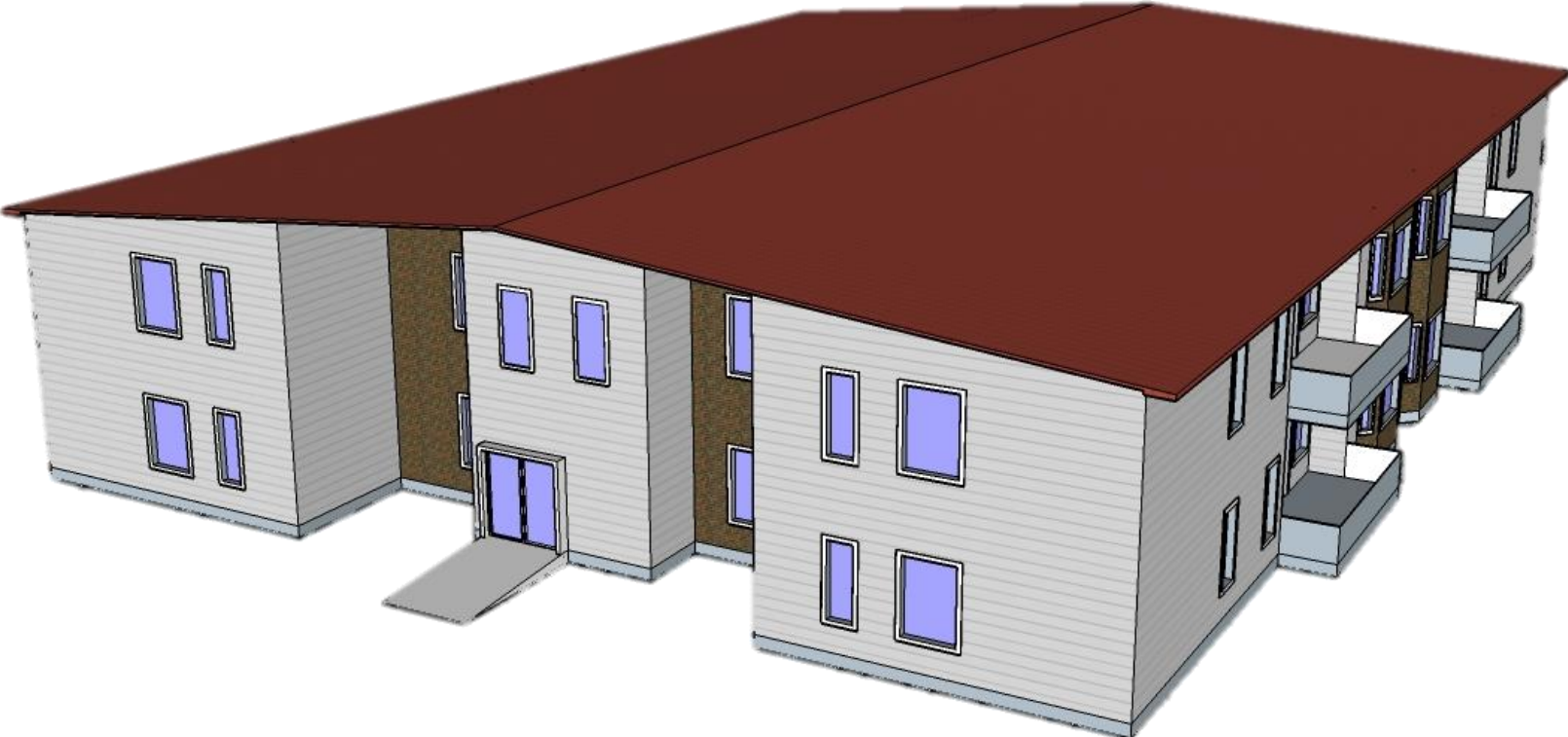


GRAY MIRAGE - BENJAMIN MOORE (WALLS)

LEMON CHIFFRON - BENJAMIN MOORE (TRIM)

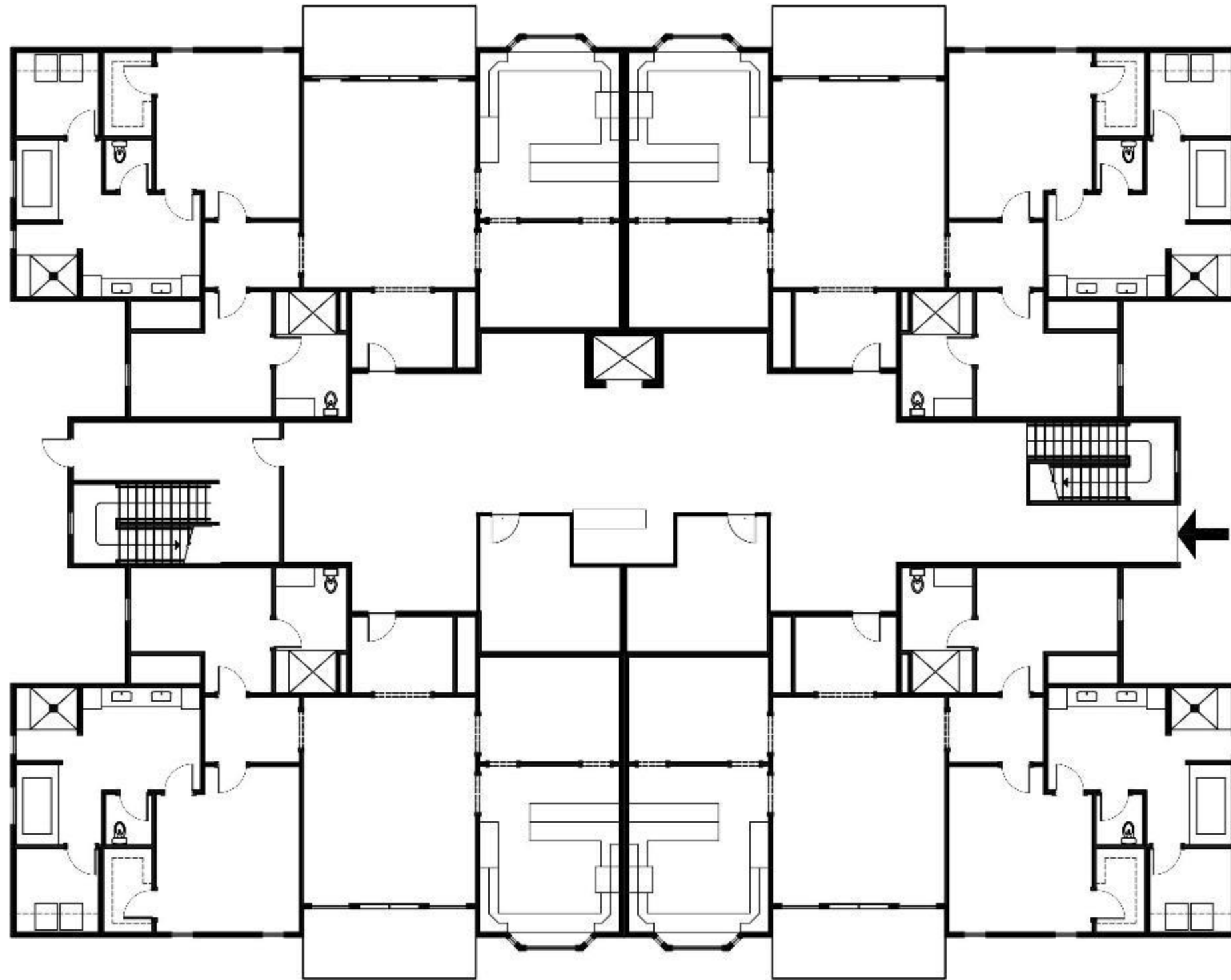
SYNERGY ONE BAMBOO FLOORING - TEREGRIN

EXTERIOR MASSING STUDY



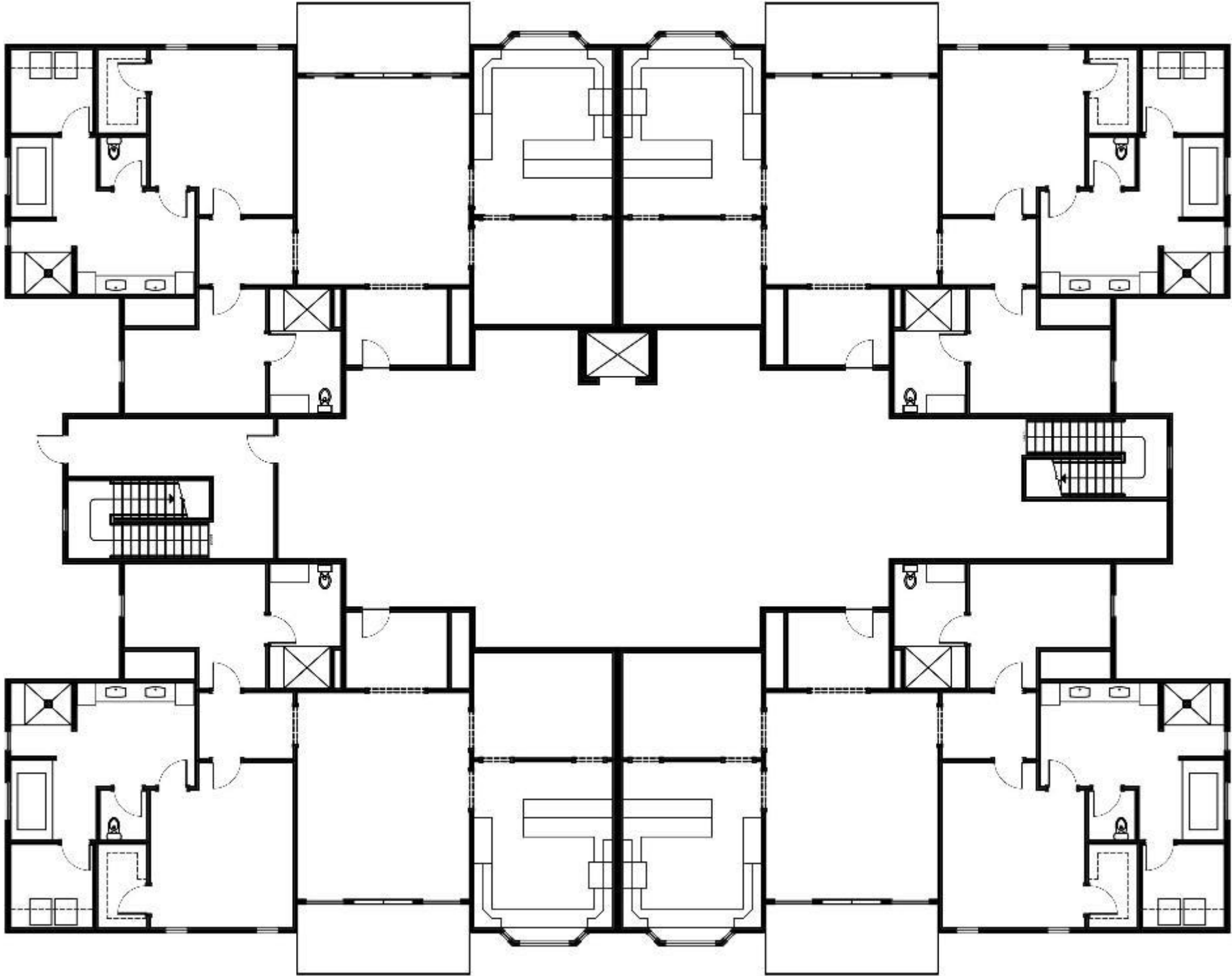
FIRST FLOOR BUILDING PLAN

*NOT TO SCALE



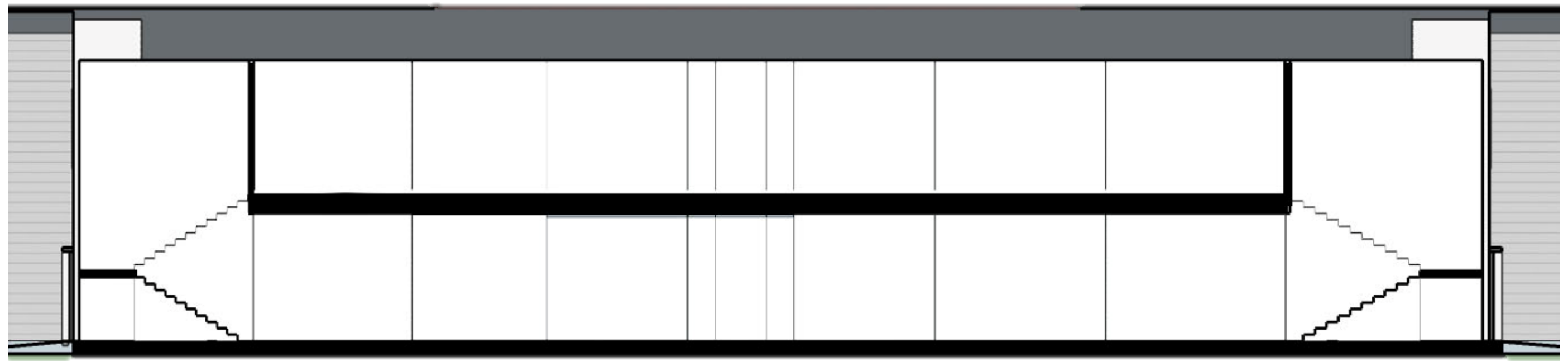
SECOND FLOOR BUILDING PLAN

*NOT TO SCALE



SECTION CUT DETAILING STAIRS

*NOT TO SCALE



 EAST/WEST SECTION CUT
SCALE: 1/2" = 1' 0"

UNIVERSAL DESIGN STRATEGIES

THROUGHOUT THE APARTMENT PROPOSALS PRESENTED ABOVE, UNIVERSAL DESIGN STRATEGIES WERE CAREFULLY INCORPORATED INTO EACH UNIT.

- AMPLE AMOUNTS OF OPEN SPACE PROVIDED IN PUBLIC AREAS
- PRIVATE AREAS SECLUDED FOR NOISE REDUCTION
- BOTH THE MASTER AND GUEST BATHROOMS CAN ACCOMMODATE USERS WITH REDUCED MOBILITY
- EACH UNIT DESIGNED TO ACCOMMODATE GOOD TRAFFIC FLOW FOR INHABITANTS AND GUESTS.
- DOORWAYS AND HALLWAYS WIDE ENOUGH TO ACCOMMODATE ALL USERS INCLUDING THOSE LIMITED TO WHEELCHAIRS
- BATHROOMS CABINETS SPECIALLY DESIGNED TO HAVE ROLL-UP ACCESS AND STILL MAINTAIN BEAUTY.



HISTORICAL PRECEDENTS

DRAWING INSPIRATION FROM THE HISTORICAL DESIGN STYLE OF CHINOISERIE, THE INTERIOR SPACES OF THESE APARTMENT UNITS WILL DRAW UPON CULTURAL SIGNIFICANCE AND BRIDGE THE TRADITIONAL STYLES TO THE MODERN USERS.

- UTILIZING COLOR TO CREATE FOCAL POINTS AND DISTINGUISH FURNISHINGS FROM THEIR SURROUNDINGS
- CURVALINIAR LINES AND SHAPES WILL BE BLENDED WITH RIGID STRAIGHT EDGES FOR A UNIQUE AND BEAUTIFUL DEISGN
- FURNITURE WILL HAVE CLASSICALLY INSPIRIED SHAPES AS WELL AS UPDATED ACCOMODATIONS
- CHINOISERIE PATTERNS WILL BE USED IN NEW WAYS TO CREATE VISUALLY PLEASING AND INTERESTING MOTIFS.
- DESIGNS WILL FLOW SEAMLESSLY FROM ROOM TO ROOM CREATING AN OVERALL COHESIVE LOOK



THEORIES OF HUMAN BEHAVIOR

UTILIZING THE HUMAN BODY AND PROPORTIONS THROUGHOUT THE SPACE IS A CRITICAL ELEMENT TO THE PROPOSED DESIGNS.

- ERGONOMIC SELECTIONS WILL BE USED THROUGHOUT THE DESIGN OF THESE SPACES
- CABINETS IN THE KITCHENS AND BATHROOMS WILL BE EASILY ACCESSABLE AND PLANNED TO BE WITHIN THE REACH OF ALL USERS
- APPROPRIATE SPACE ALLOCATIONS HAVE BEEN MADE FOR USERS TO MOVE FREELY THROUGHOUT ALL THE SPACES
- ANTHROPOMETRICALLY DESIGNED FURNITURE WILL BE USED TO BETTER ACCOMMODATE ALL USERS
- SLIP RESISTANT SURFACES HAVE BEEN INCORPORATED INTO THE BATHROOMS SO THAT SLIP
- DOORS WILL BE SPECIFIED WITH LEVER HANDLES INSTEAD OF ROUND KNOBS FOR EASY OPERATION

