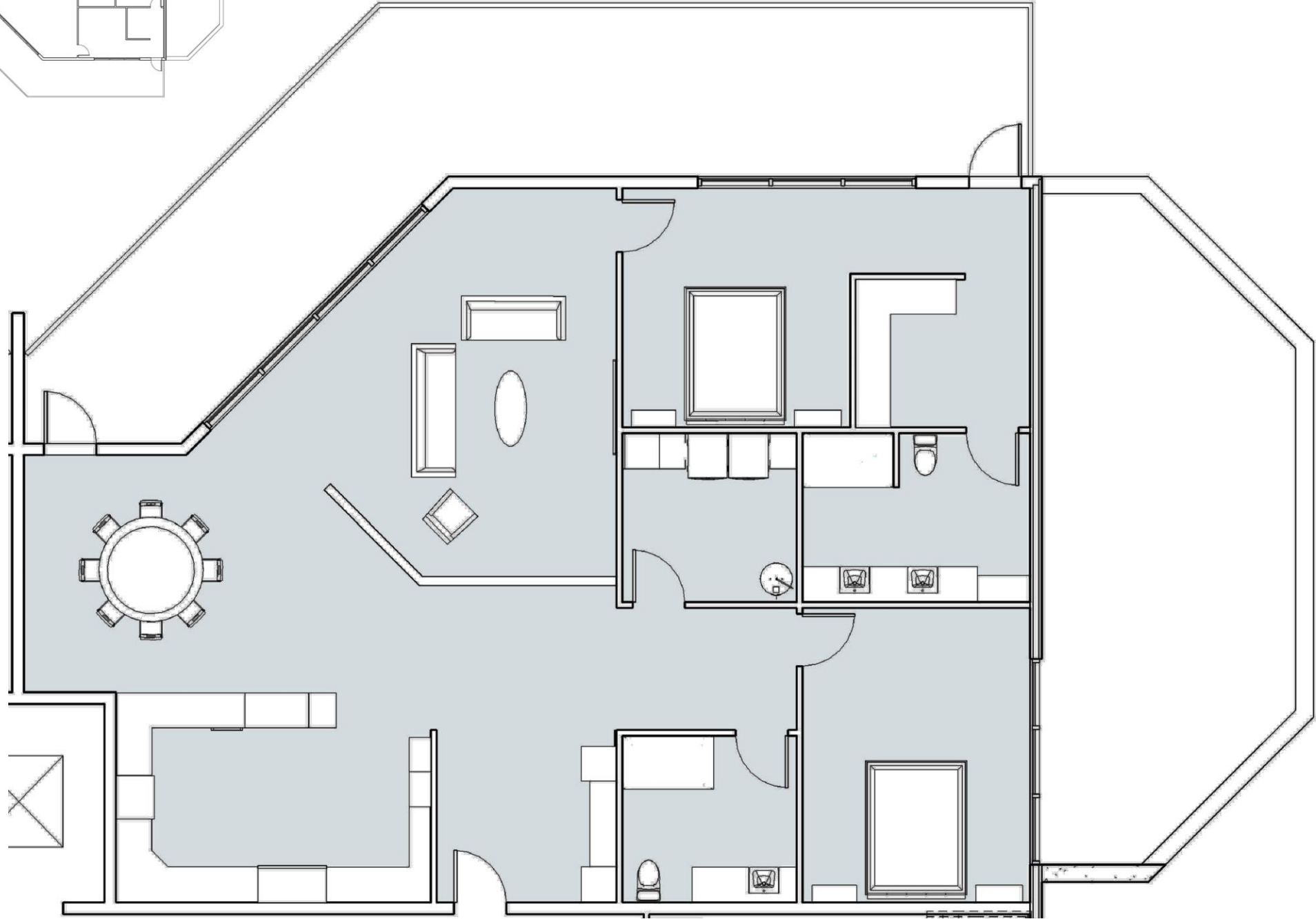
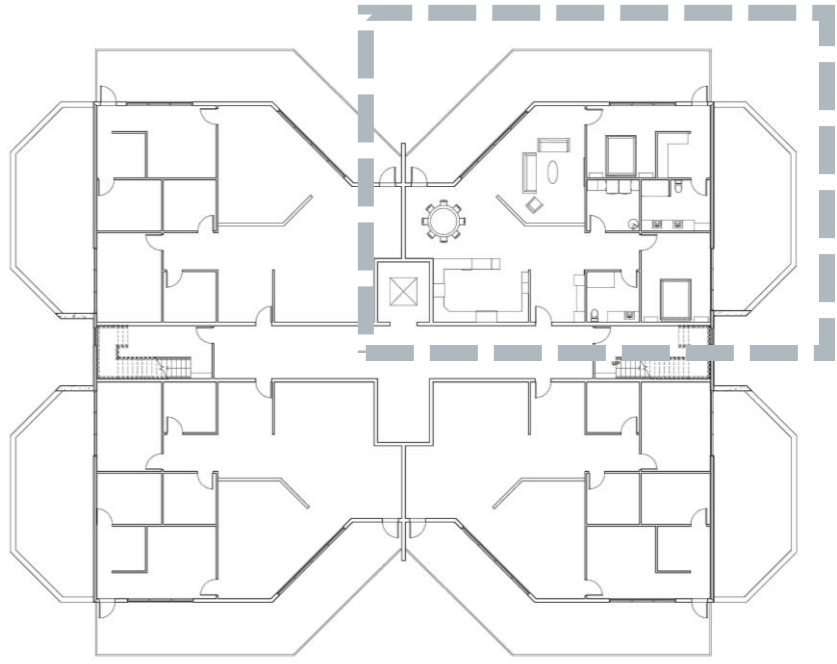


PORTFOLIO THREE



Elisa Christopher
Universal Design
IDSN 4500
Fall 2015





UNIT FLOOR PLAN

Come on in and take a seat,
if Pat and Fran are who you wish to meet.
Oh so long ago they hitched,
but Pittsburg is where they just ditched.
Now that these two are retired,
It is their wish they no longer get hired.
Their daughter, Dana is whom they wish to visit,
so their Greenville home must be exquisite.
Molecular physics has stolen Fran's heart,
but what Pat truly loves is decorative art.
Fran can't hear out of either ear,
but he can read lips you mustn't fear.
Dana lost her leg in the war,
but her brother Dale still loves her of course!
In this home that they all will relish,
will stand a vitrine that would make any one jealous.
And we can't forget about the settee from Aunt Sue,
it is comfy, and cozy, and stylish too.
So venture into their home we will,
Pat and Fran agree that it fits the bill!



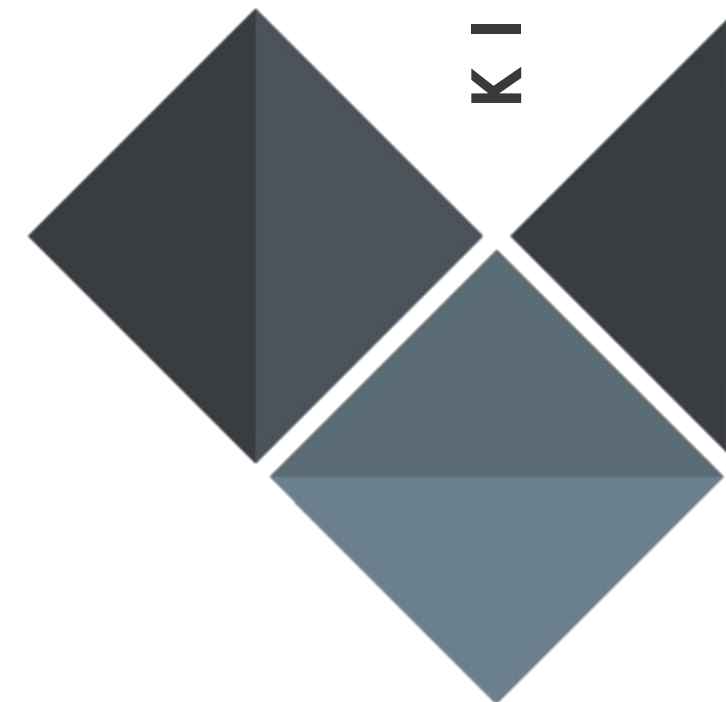
PAT AND FRAN'S
GREENVILLE CONDO





Pat always cooks and Fran helps clean,
the focal wall displays tile in the perfect shade of green.
Storage was required for lots of pots and pans,
dishes, cups, and even soup cans.

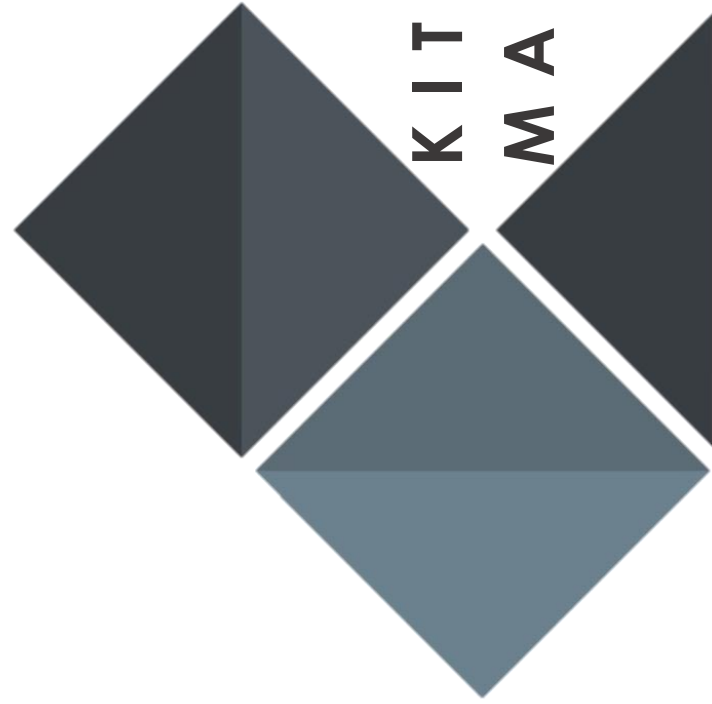
KITCHEN



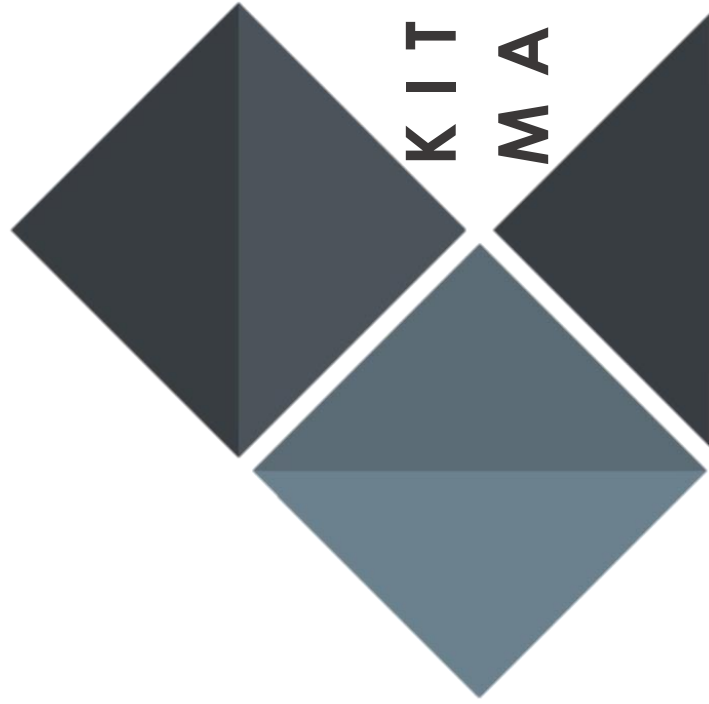


A bar station at the end houses all of their wine,
when friends come over its always a good time.
The kitchen is open to the living and dining,
so Pat can see when green beans have you whining.





**KITCHEN FINISHES &
MATERIALS - OPTION ONE**

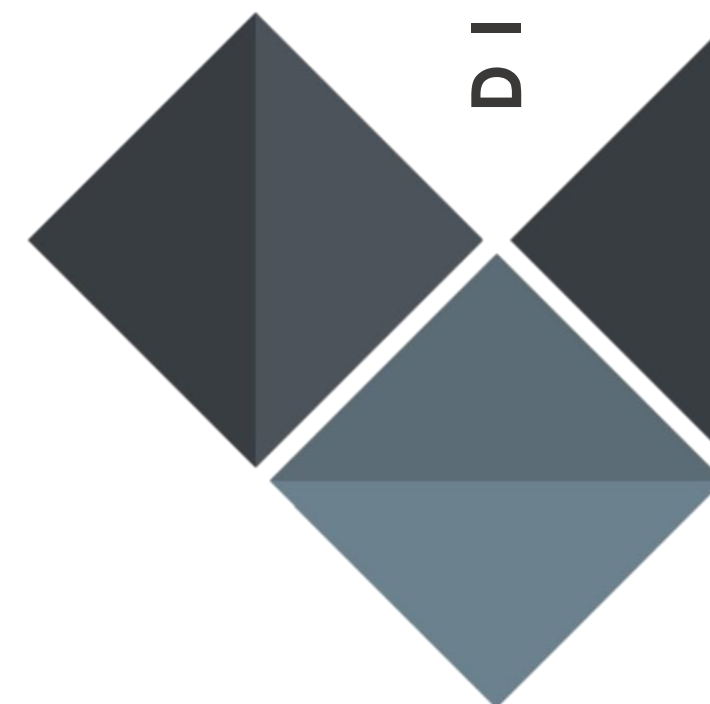


**KITCHEN FINISHES &
MATERIALS - OPTION TWO**



Everyone gathers to eat at the table,
Fran loves to cook fish when she is able.
Blue grass cloth surrounds the space like a hug,
Pat picked the chairs that Fran's grown to love.

DINING AREA





A contemporary look is what we are starting to find, and notice this home is one of a kind.

DINING AREA





DINING FINISHES &
MATERIALS - OPTION ONE





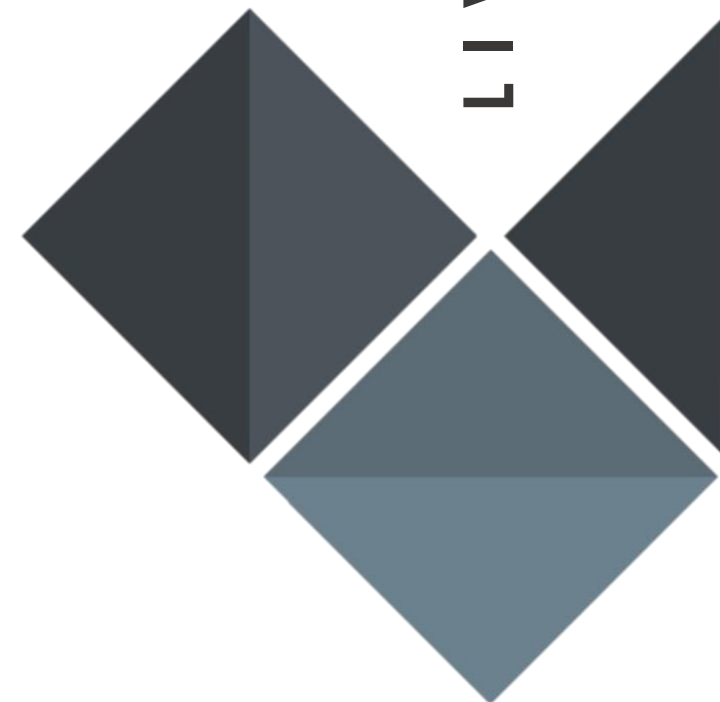
DINING FINISHES &
MATERIALS - OPTION TWO





Now the living room is where everyone can unwind, what a beautiful feature, wooden beams intertwined.

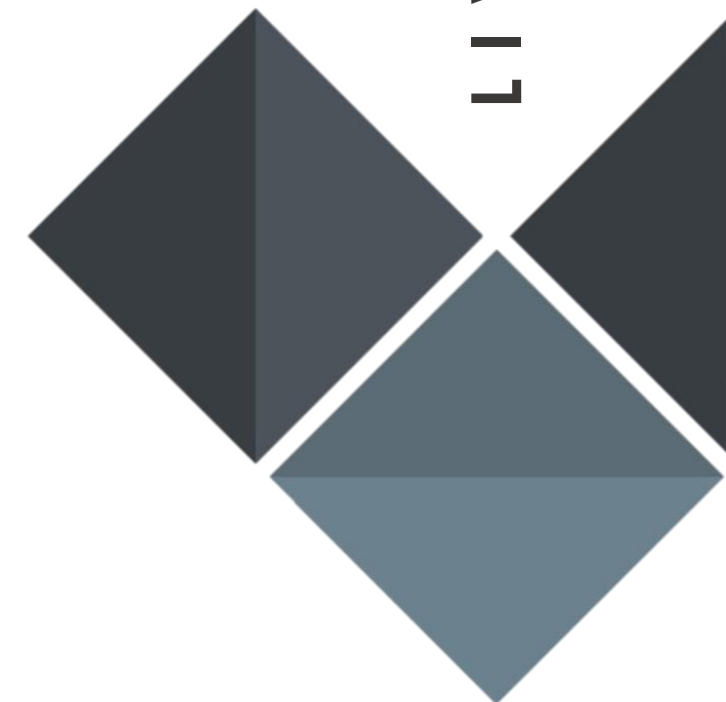
LIVING AREA

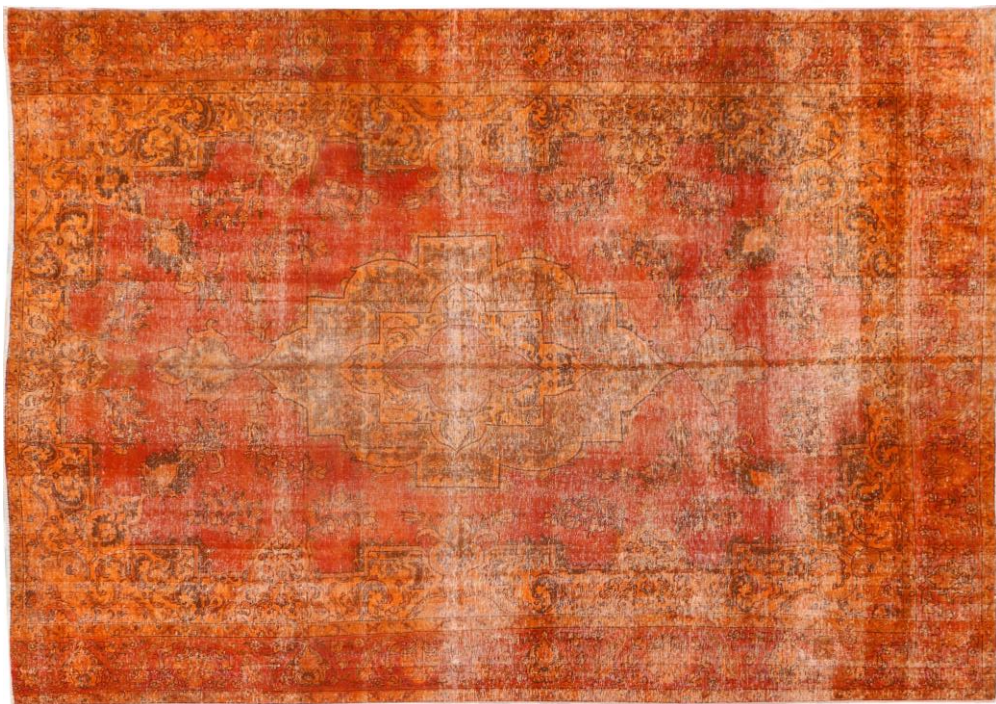




The fireplace adds warmth to the space, to get a spot on the settee is always a race. The rug bridges the gap between modern and traditional, the orange and blue hues are quite sensational.

LIVING AREA





LIVING FINISHES &
MATERIALS - OPTION ONE

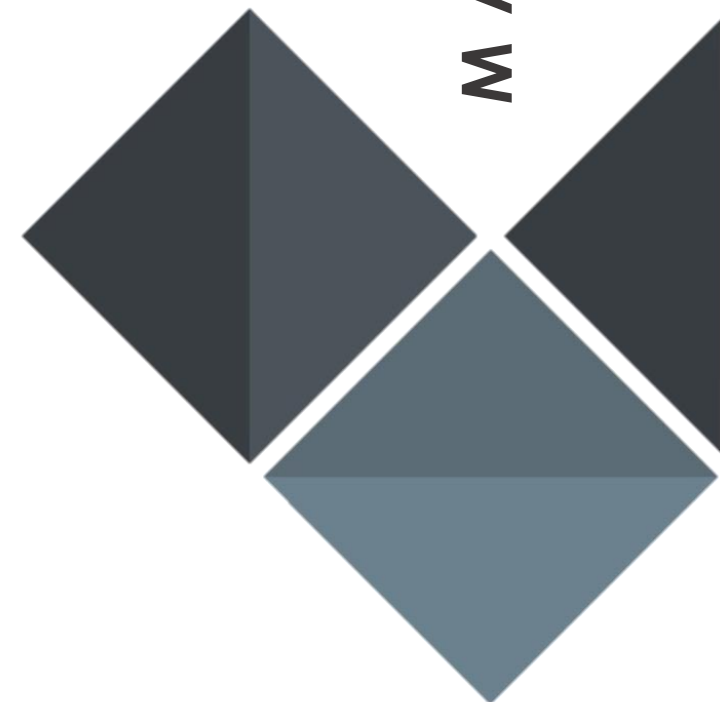


LIVING FINISHES &
MATERIALS - OPTION TWO



The master suite provides some peace and serenity, wallpaper with birds is as charming as Fran can be. Pendants hang on either side of the bed, underneath you won't find nightstands but, floating shelves instead. Follow the wood all around the room, it will lead you to the rest of the suite very soon.

MASTER BEDROOM





**M A S T E R B E D R O O M
F I N I S H E S & M A T E R I A L S -
O P T I O N O N E**





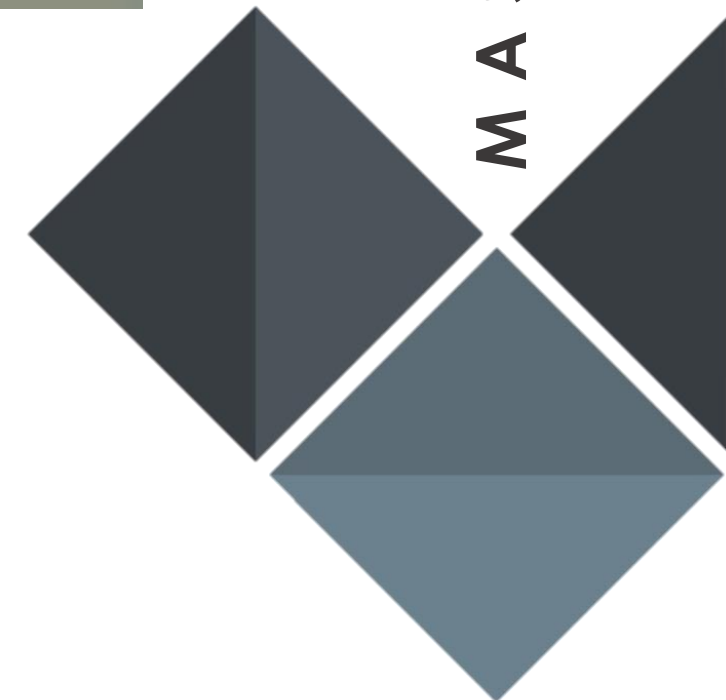
**M A S T E R B E D R O O M
F I N I S H E S & M A T E R I A L S
O P T I O N T W O**





The bathroom is designed both modern and tasteful, hinged mirrors and sconces make shaving more graceful.

M A S T E R B A T H R O O M





Warm wood is contrasted by cool blue tile,
this combination might have you in the shower for a while.
We all know that no one wants to grow old,
but there's blocking for grab bars when you need something to hold.





**M A S T E R B A T H R O O M
F I N I S H E S & M A T E R I A L S -
O P T I O N O N E**



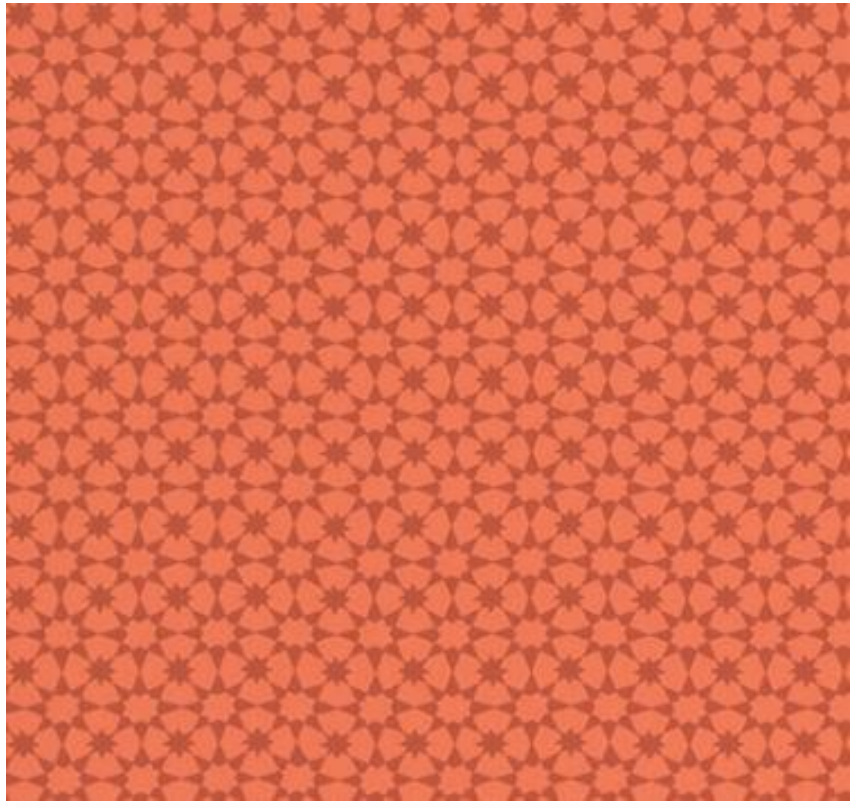
**M A S T E R B A T H R O O M
F I N I S H E S & M A T E R I A L S -
O P T I O N T W O**



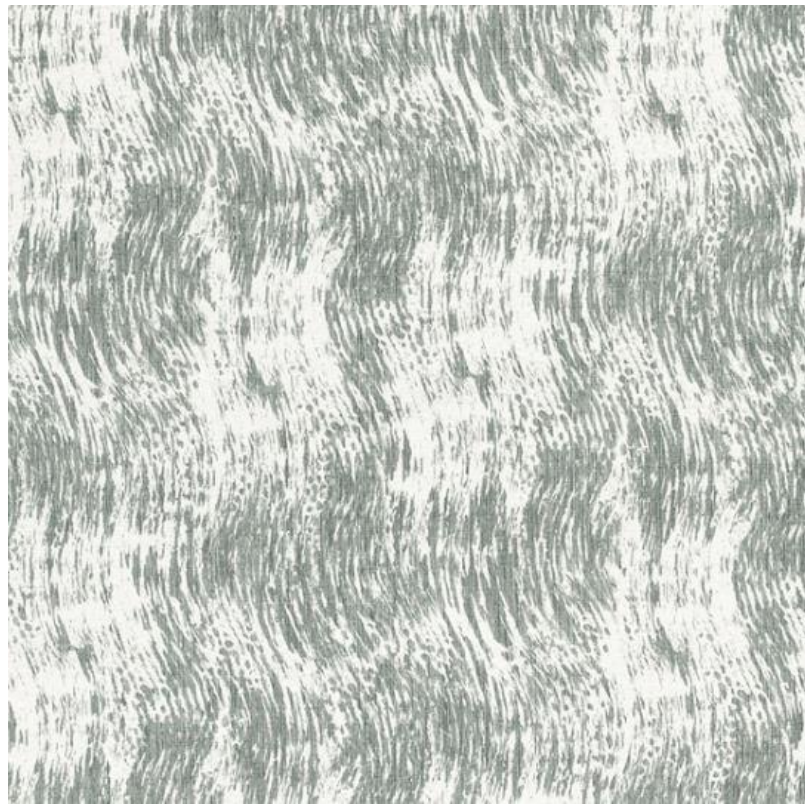
Orange makes guest feel safe and cozy,
give them their own room so they can't be nosy.
These guest accommodations mimic the master suite,
to let them know their stay is always a treat.
Some might come only to lay their head,
but most will admire the contemporary touches from bed.

GUEST BEDROOM





**GUEST BEDROOM FINISHES
& MATERIALS - OPTION
ONE**

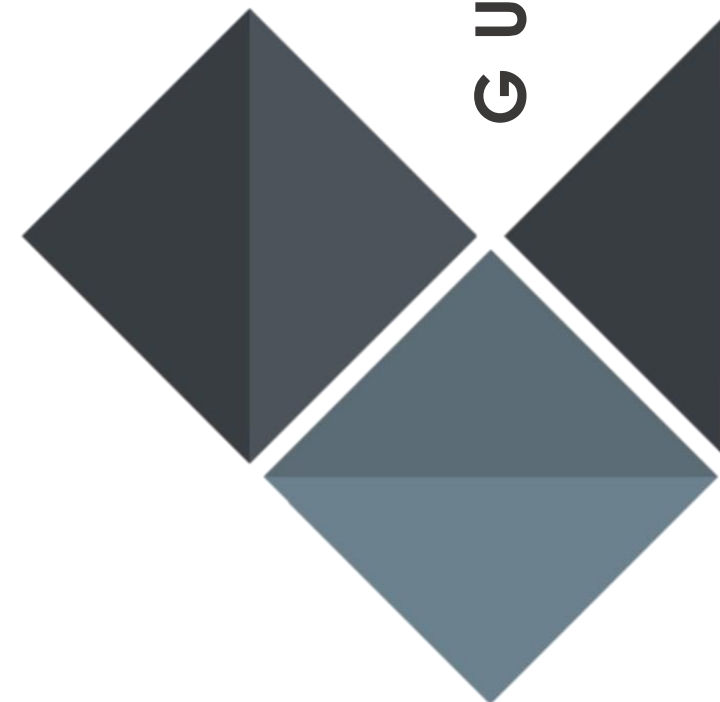


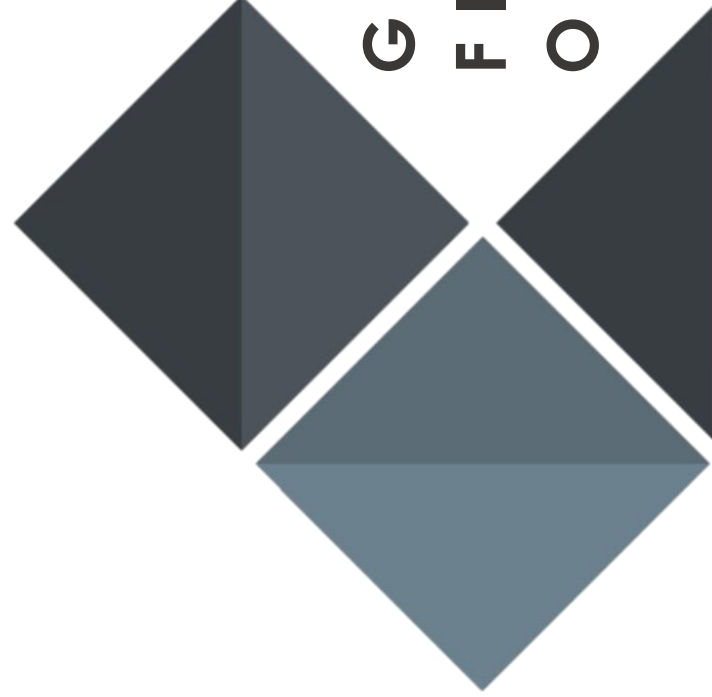
**GUEST BEDROOM FINISHES
& MATERIALS - OPTION
TWO**



In the powder room you can get clean;
Wash your hair, your toes, and everywhere between.
It's easy to roll a chair to the sink,
underneath there's more room than you might think.
The tile displays a decorative touch,
while the circles remind Fran of amoebas and such.

GUEST BATHROOM





**GUEST BATHROOM
FINISHES & MATERIALS -
OPTION ONE**

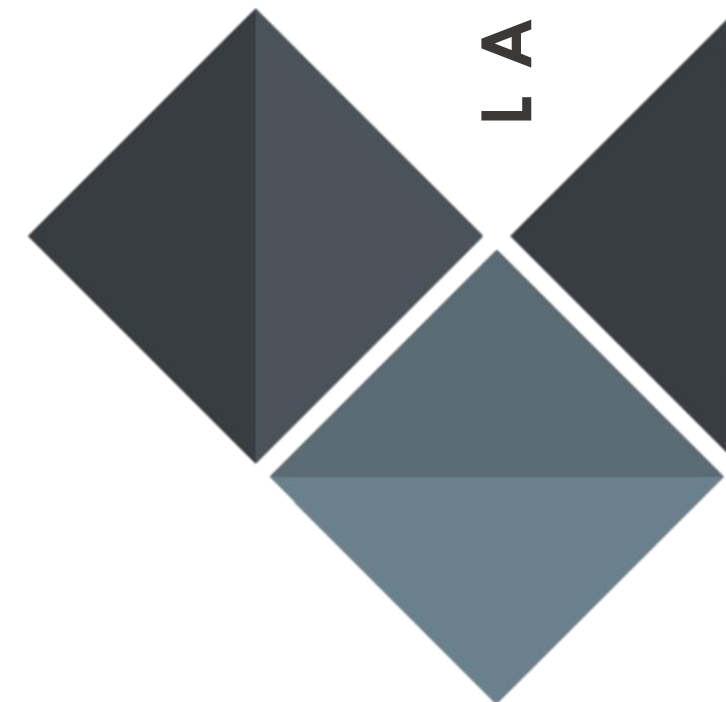


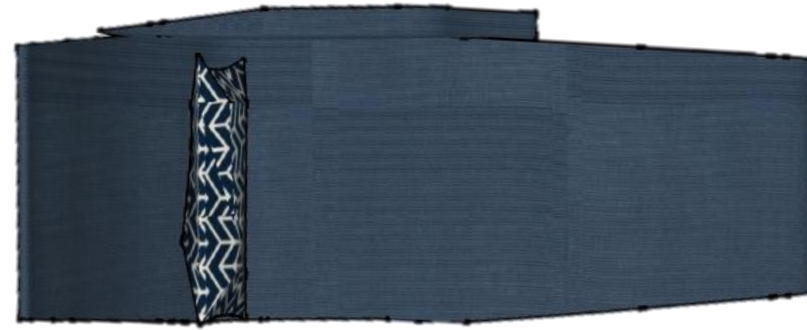
**GUEST BATHROOM
FINISHES & MATERIALS -
OPTION TWO**



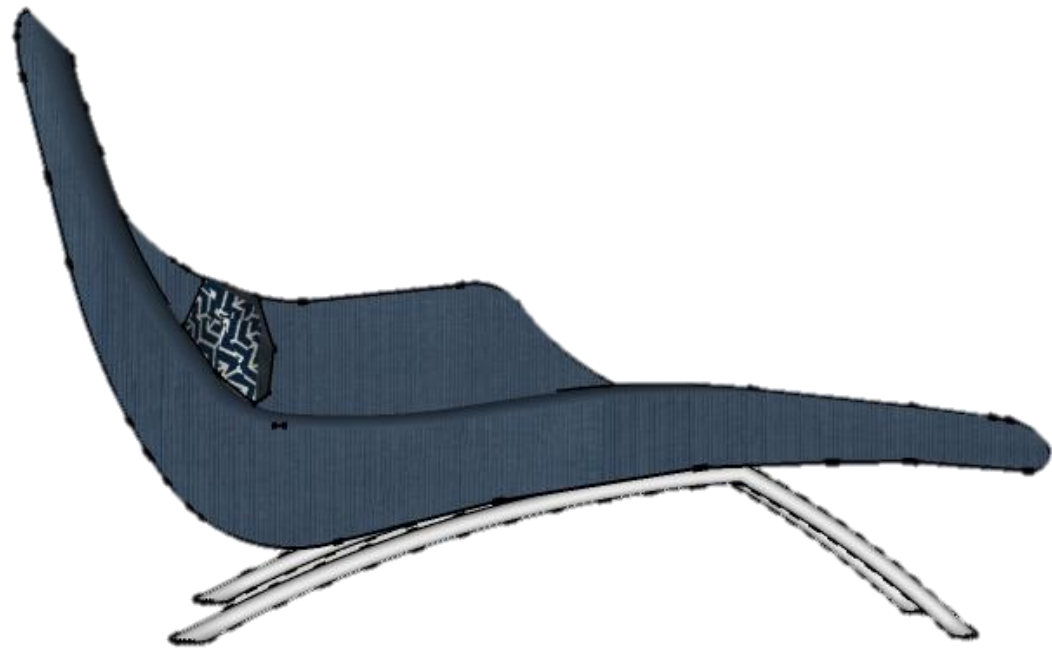
Wash and dry;
dry and wash.
Here is where the stains come off.
Folding shirts
and hanging skirts,
Pat loves this laundry room and all its perks.
She hangs Fran's shirts up to dry;
he knows that he's one lucky guy.

LAUNDRY ROOM

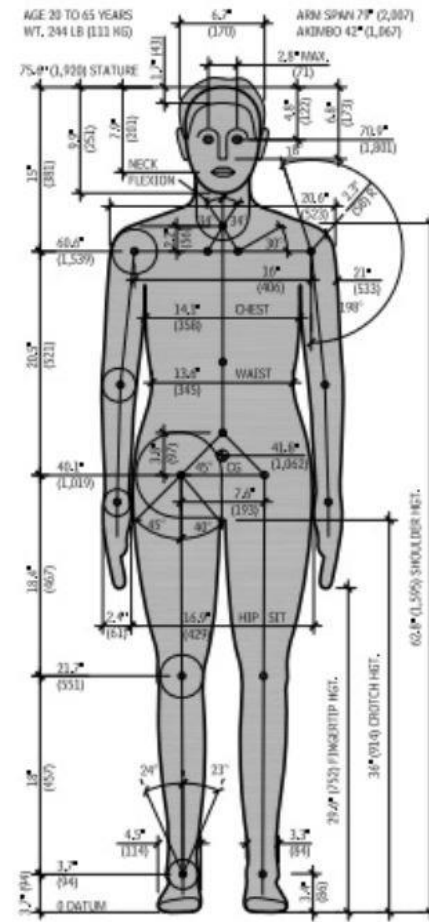




PLAN VIEW



SIDE ELEVATION



FRONT ELEVATION



ANTHROPOMETRIC
SEATING UNIT

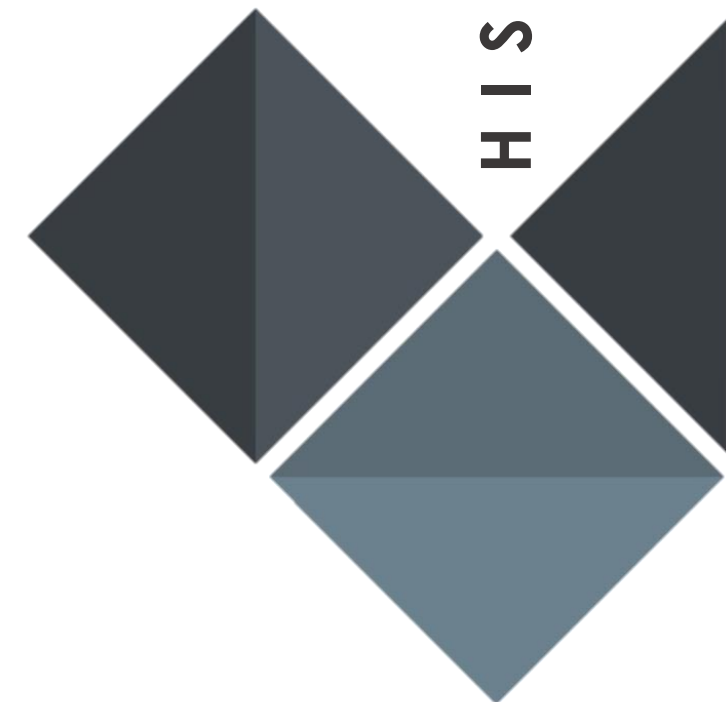


CONTEMPORARY DESIGN

- Bold and trendy designs inspired by popular and fresh ideas.
- Because contemporary design refers to what is popular, designs look eclectic.
- Both geometric and curvy shapes take the spotlight, highlighted with a variety of contrasting textures.
- Mixing materials keeps contemporary design interesting and draws the eye in.
- Stark black and white tones are juxtaposed by vibrant hues.
- Simple designs integrate ornamentation to capture a feeling of luxury.

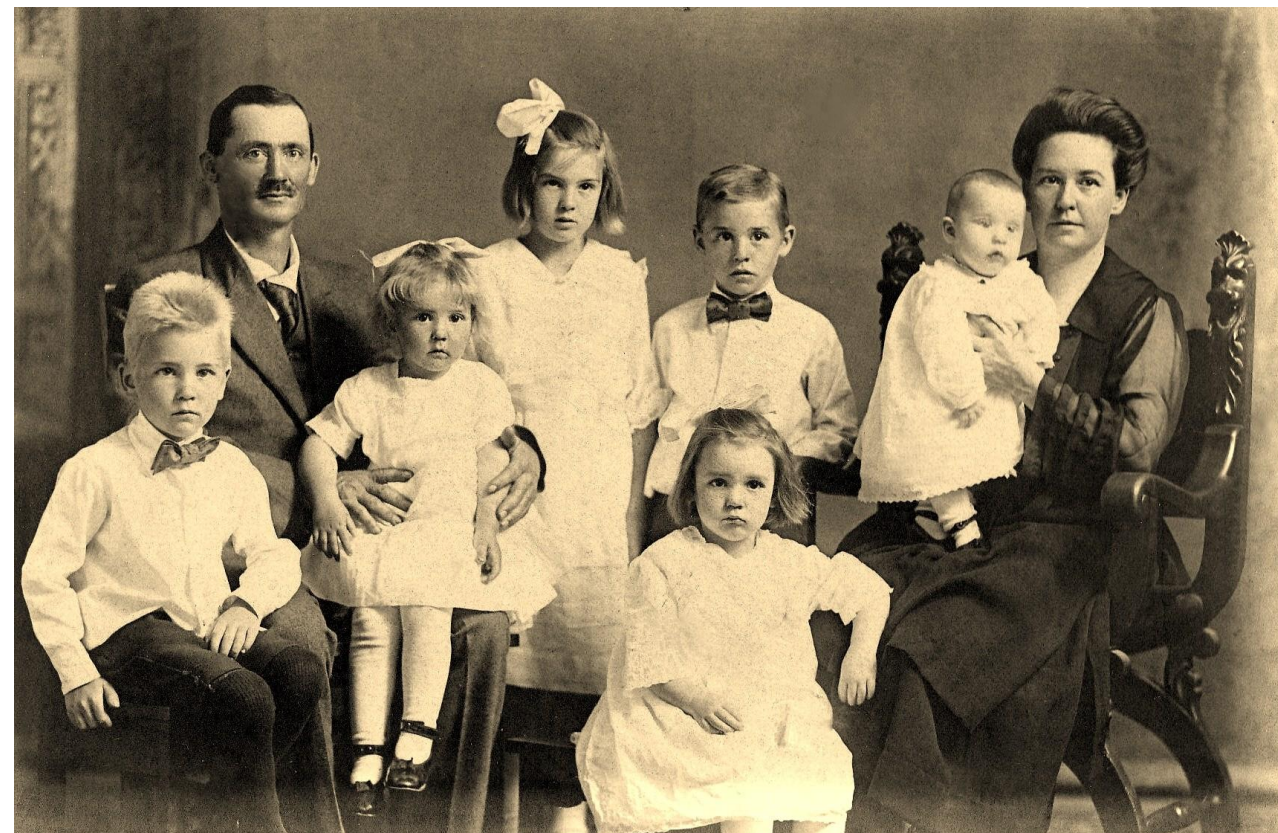


HISROORICAL PRECEDENT



HUMAN BEHAVIOR

- A person's primal focus on relationships and bonds lends itself to an open floor plan where public rooms are in close relation to each other allowing for easy communication. Close proximity of spaces provides increased flow between spaces. The owners' bonds with current furniture pieces in their home add a sentimental value reminding them of their family.
- Designing in a way that is comfortable for end users at any age allows people to stay in their homes longer, aiding in a need to "nest". Designing to age in place also allows for a space that is easy to use for people with disabilities, whether a current disability or one acquired later in life.



HUMAN BEHAVIOR

