

BETHANY DOWER

PORTFOLIO 3

FINAL SCHEMATIC DESIGN

IDSN 4500

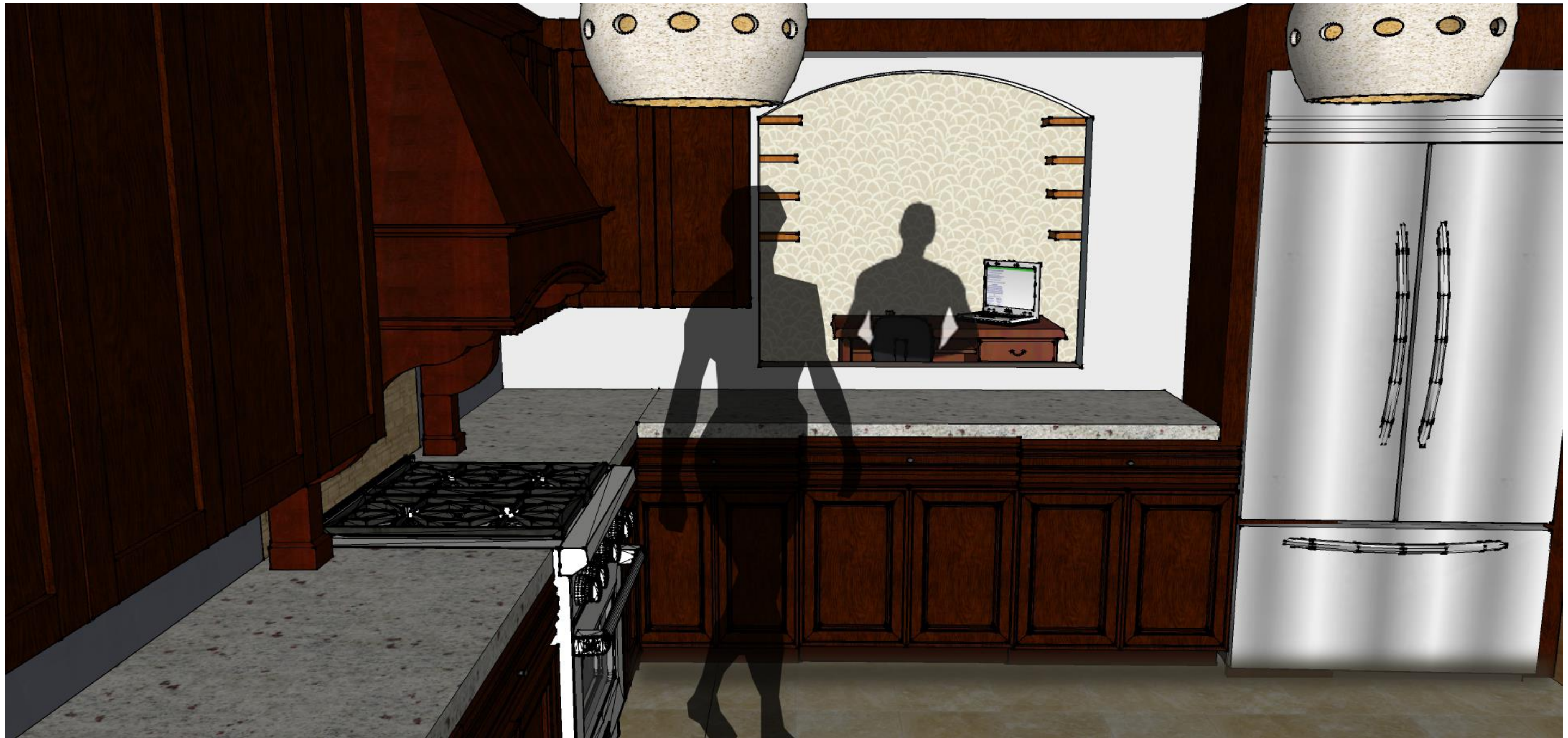
FALL SEMESTER



Fran woke up Thanksgiving morning with a wide stretch. She scooted close to the edge of her bed and started to think about the day ahead. Her kids Dana and Dale were heading into town for the holidays today. The sun was shining through the window cueing her to finally get out of bed. Pat was probably in his office making last minute plans for how the family was going to spend the weekend. She stood up and washed her face in the bathroom and walked out to get some coffee and meet her husband.



As Fran walked through the kitchen, the buzzer in her pocket went off telling her that the door bell was ringing. Fran is deaf. She and her husband, Pat, have been able to install certain lighting and feeling strategies to make Fran's life a little simpler. Fran walked to the door and opened it to a young woman with bright green eyes. Her hair was pulled back in a bun and her smile was unmistakable. "You are here so early!" Fran said and signed. Dana is currently stationed at Fort Bragg serving with the 82nd Airborne. This Thanksgiving will be the first time in two years that Dana will be around for the holidays. After getting home from her last deployment in August, she has been recovering from her injury he received in Afghanistan. She has since had her leg amputated and is in a wheelchair.



Heading back into the kitchen Fran waved at Pat who was sitting in his study. “When are you going to start the turkey?” she asked. Pat turned around and signed “I’ll be there in a minute, just let me wrap up some emails.” Fran got some coffee for Dana and they talked, catching up on each other’s lives. Both Dana and her son Dale learned sign language when they were young. Fran told Dana about their new lighting system which allows her to see alarms instead of hearing them. Fran then told Dana to follow her into the extra bedroom to see all the renovations they had done.



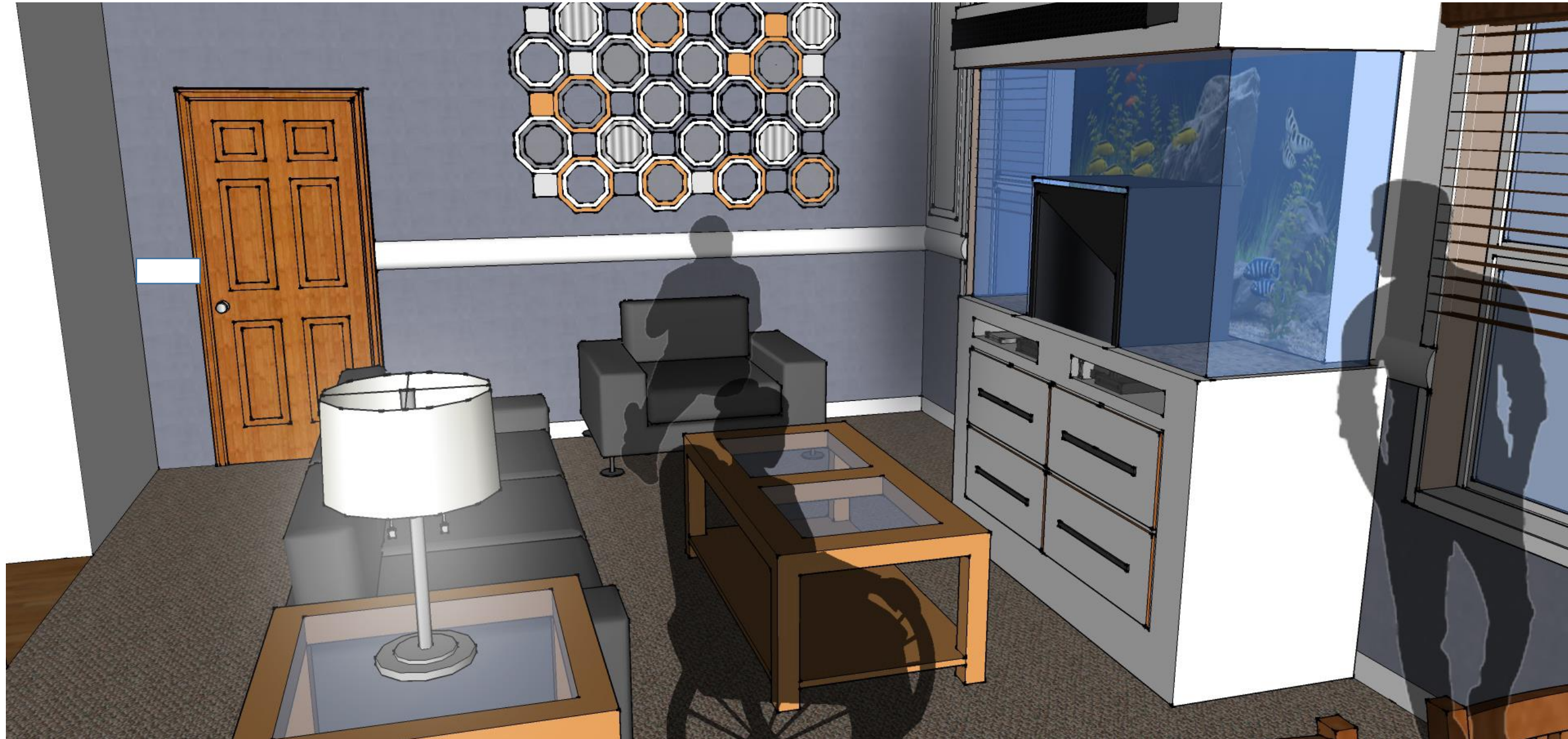
As they walked into the room Dana couldn't believe the transformation. New paint and wallpaper covered the walls and the hard woods had been polished to help diminish wear and tear. Dana also noticed all the new furniture. Including a chair that sat along the wall. Pat and Fran had a chair designed that would be easier for Dana to use. The asymmetrical design would allow Dana to scoot in on one side of the chair and sit comfortably. They wanted to wait for Christmas to give it to her, but realized that they were all going to be together for the holidays, Fran just could not wait.



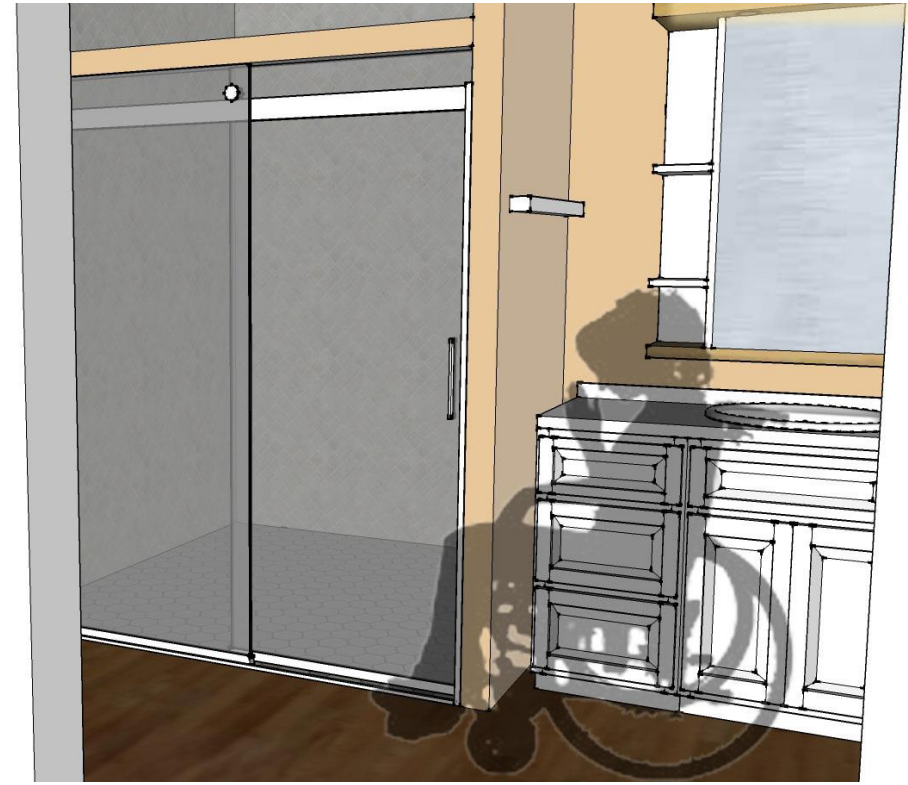
While standing in the bedroom, Fran's pager started to vibrate again telling her someone was back at the door. As she walked to the door the smell of turkey was starting to fill the apartment. Gravy was on the stove, and Pat was starting to set the table for dinner. Reaching for the front door Fran opened the door with Dana close behind. "DALE!" Fran hugged her son. He is currently living in Richmond and has been for the past several years. Dale is a young man with thick brown hair and hazel eyes. He has been working as a financial advisor in the city and hasn't been home since last Christmas. Coming to the kitchen the four of them stood around catching up and getting food ready for the evening. Dale soon left the room to go look at the fish tank in the living room. "Turn on some football!" Pat yelled from the kitchen. Soon, the whole apartment smelled of casseroles and gravy.



As Dana and Fran finished setting the table, Pat started cutting the turkey, and Dale started to pour the wine. The sun was starting to set and the sense of bliss and satisfaction filled the room. During their dinner each person went around the room saying what they were thankful for that year. Tears of thankfulness and joy started to flow as Dana shared about her experience in Afghanistan. Dale shared about his ups and downs in Richmond but was thankful for where life had brought him. Soon, the plates were empty and dishes started to get cleared. "Let's sit in the other room" Pat said. Fran put some pies in the oven for later that evening as the others made their way to the living room.



The family talked, ate pie together and shared their plans for the weekend. It was great to all be together again, even if it was just for a little while. Soon everyone started to get tired as the night started to advance. Fran hugged her husband, it had been so long since they had all been together and her heart was full. Dana made her way to the guest room and Dale had humbly decided to sleep on the couch. As everyone settled in for the night Pat and Fran got ready for bed. Finally, the lights in the house went out and everyone fell asleep.







FLOOR PLAN



FINISHES

OPTION 1



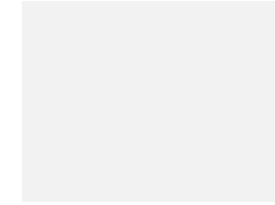
FINISHES

OPTION 2



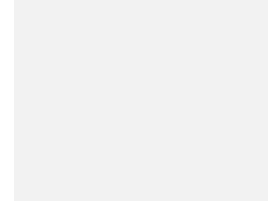
FURNITURE

LIVING ROOM

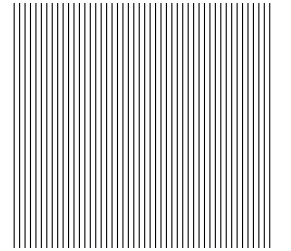
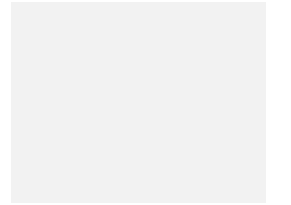


FURNITURE

DINING ROOM



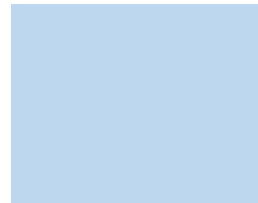
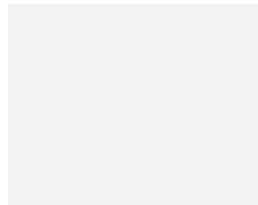
MASTER BEDROOM



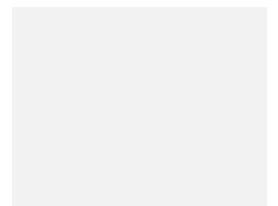
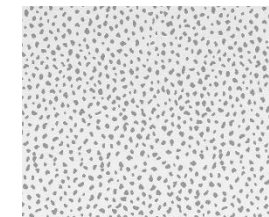
bd

FURNITURE

MASTER BATH

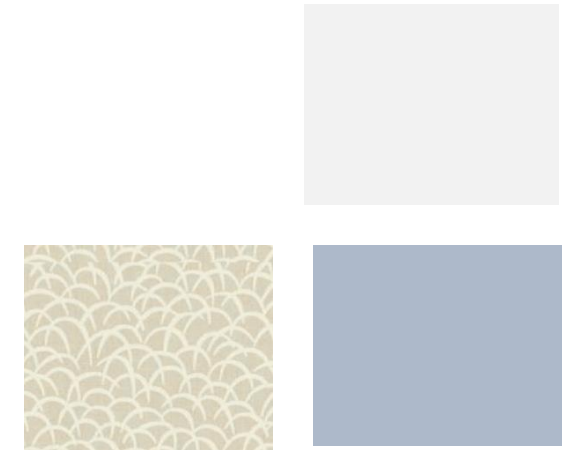


BEDROOM 2



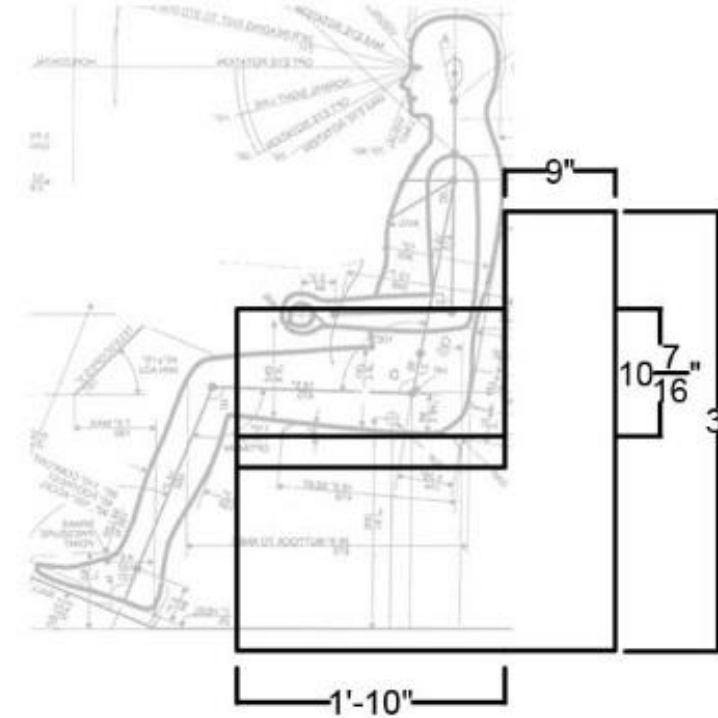
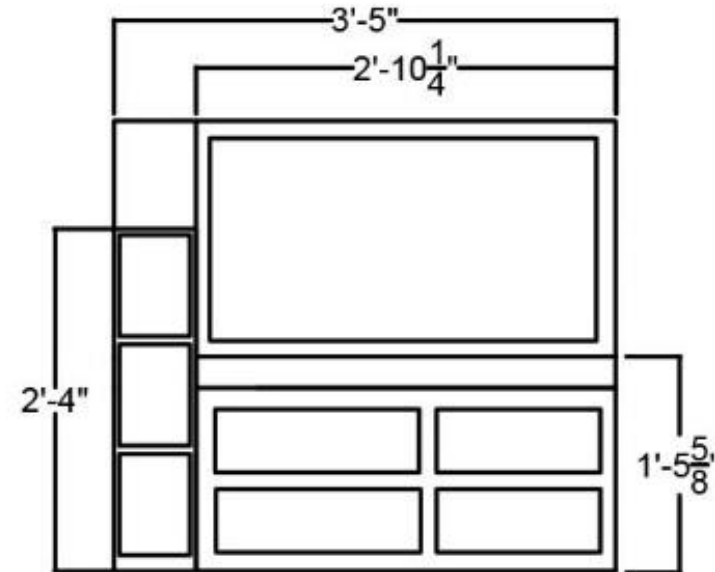
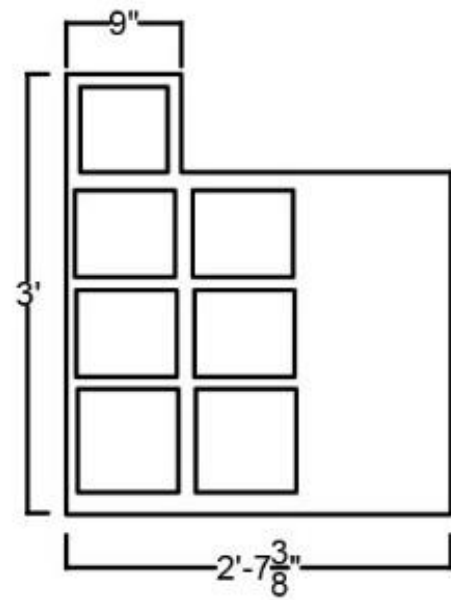
FURNITURE

BONUS ROOM



CHAIR

ELEVATIONS

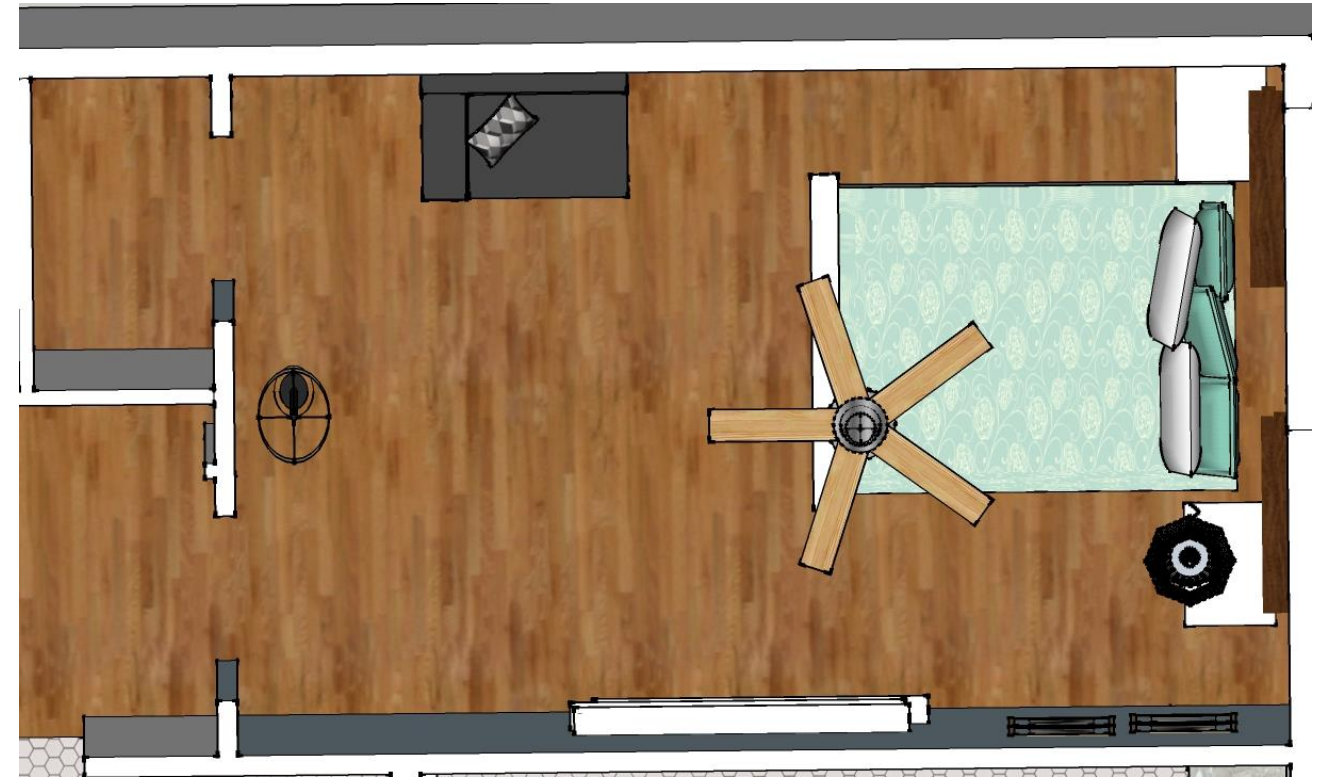


THE POINTS OF ANTHROPOMETRICS USED IN THE SEATING UNIT IS

1. ONE ARM FOR ACCESSIBILITY
2. AT LEAST 17" FOR SEATED POSITION
3. EXTRA BUILT IN STORAGE



PERSPECTIVES AND FLOOR PLAN



THE ARCHITECTURE:

TRADITIONAL ARCHES ARE DISPLAYED IN OPEN PASSAGEWAYS AND OPENINGS IN THE SPACE. THE KITCHEN ALSO DISPLAYS TRADITIONAL CABINETS. THE LIVING ROOM HAS RAISED PANELS ALONG THE WALL WHICH ADDS VISUAL INTEREST IN THE SPACE AS WELL AS CREATES HARMONY AND UNITY. ALL THE TRADITIONAL ASPECTS TIE ALL THE PUBLIC SPACES TOGETHER.

THE FINISHES:

THE FINISHES THAT WERE USED IN THE SPACE ARE MORE CONTEMPORARY THAN TRADITIONAL. THIS WAS DONE TO TIE IN THE FURNITURE WITH THE SPACE. THE COLORS OF THE PAINT AND WALL COVERINGS IN THE SPACE CONTRAST WITH THE COLORS OF THE KITCHEN WHICH ARE MORE TRADITIONAL. THE CONTINUAL CHANGE IN COLOR AND FINISHES CREATES CONTRAST IN THE SPACE WHICH CREATES VISUAL INTEREST. THE PAINT HAS A GLOSSY FINISH WHICH CREATES AN ELEGANT APPEARANCE IN THE SPACE. THE WOOD IS ALSO POLISHED TO CREATE MINIMAL WEAR AND TEAR.

THE FURNITURE:

THE FURNITURE USED IN THE SPACE IS VERY CONTEMPORARY. THIS WAS USED TO CREATE A SENSE OF SIMPLICITY AS WELL AS CONTRAST IN THE SPACE. THE FURNITURE DISPLAYS A DIFFERENT STYLE THAN THAT OF THE ARCHITECTURE; HOWEVER, WITH THE STRONG LINEAR FEATURES, THAT ARE APPARENT THROUGHOUT THE WHOLE SPACE, THE FURNITURE AND CLASSICAL ELEMENTS CREATE AN EMPHASIS ON HARMONY IN THE SPACE. THERE ARE ALSO SPLASHES OF ABSTRACT ART IN THE SPACE TO CREATE INTEREST AND TIE FEATURES BACK TO MODERN DESIGN WITH THE CLASSICAL FEATURES.

VARYING SOCIETAL OR BEHAVIORAL NORMS/ APPLYING HUMAN BEHAVIOR:

- AS PEOPLE AGE THE NEED FOR CARE AND SAFETY REQUIREMENTS INCREASES. THE SPACE WAS DESIGNED FOR SOMEONE TO MOVE IN AND AGE IN THE SPACE WITH ADA FEATURES AVAILABLE AS THEY WOULD NEED IT.
- OLDER GENERATIONS ARE BECOMING MORE ACTIVE, THEREFORE THE SPACE IS MADE FOR PEOPLE TO NOT BE HINDERED BY DISABILITIES THAT THEY MAY OR MAY NOT HAVE.
 - CIRCULATION IS FLUID AND CONTINUOUS
 - ANTHROPOMETRIC MEASUREMENTS WERE USED IN THE DESIGN OF THE CABINETS AND FURNISHINGS.
 - HAVING THE KITCHEN NEAR THE FRONT DOOR WAS PLANNED BASED ON FUNCTIONALITY
 - THIS ALLOWS RESIDENTS TO HAVE COUNTER SPACE IN A CLOSE PROXIMITY FOR GROCERIES. THE KITCHEN IS ALSO A COMMON MEETING AREA AND ALLOWS EASY ACCESS TO THE DOOR FOR GUESTS.
 - BATHROOMS WERE PLACED NEAR BEDROOMS
 - LIVING ROOM WAS FORMED IN AN L SHAPE TO ALLOW FOR INTIMACY OR PRIVACY