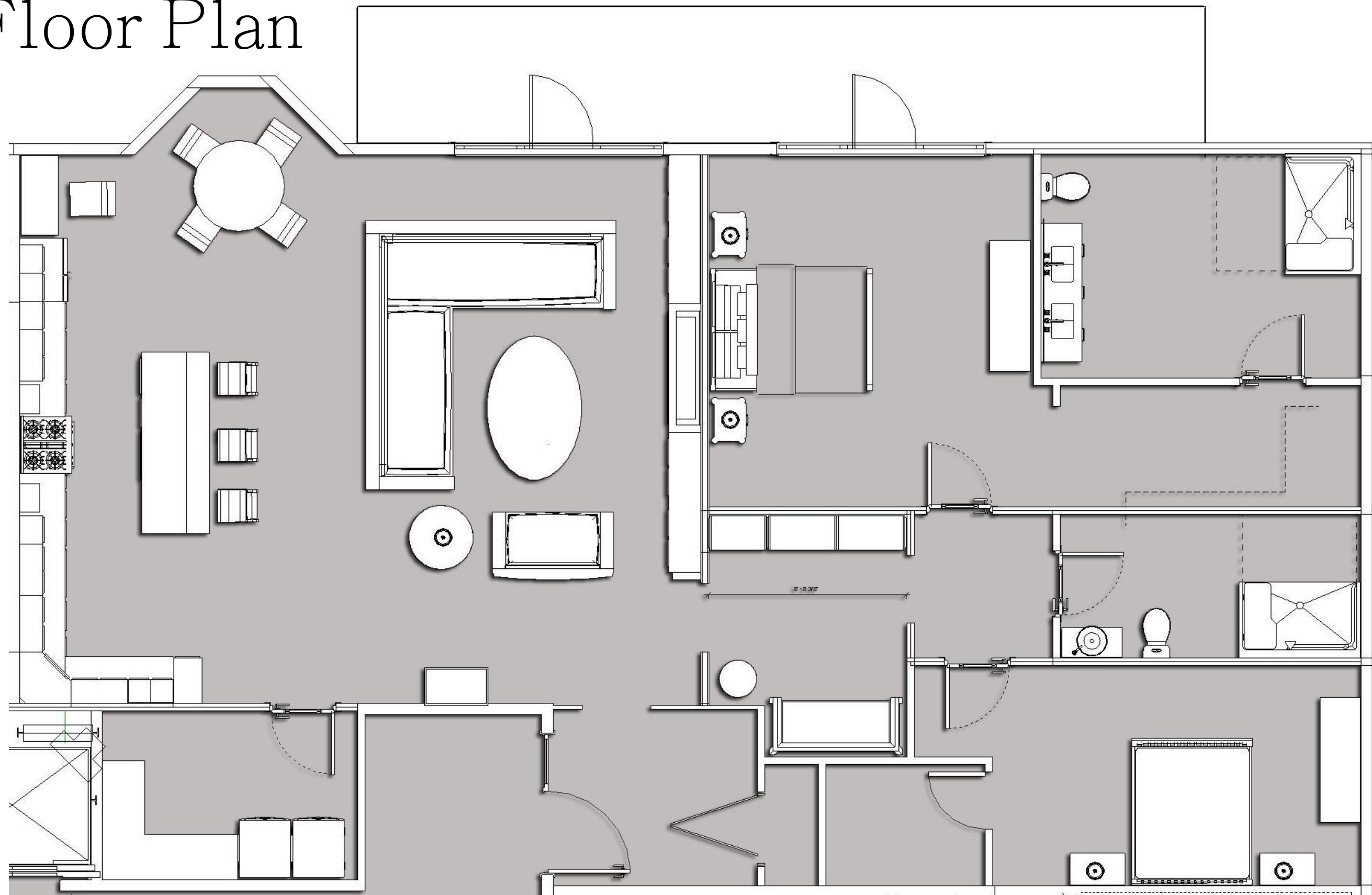


# Portfolio 3

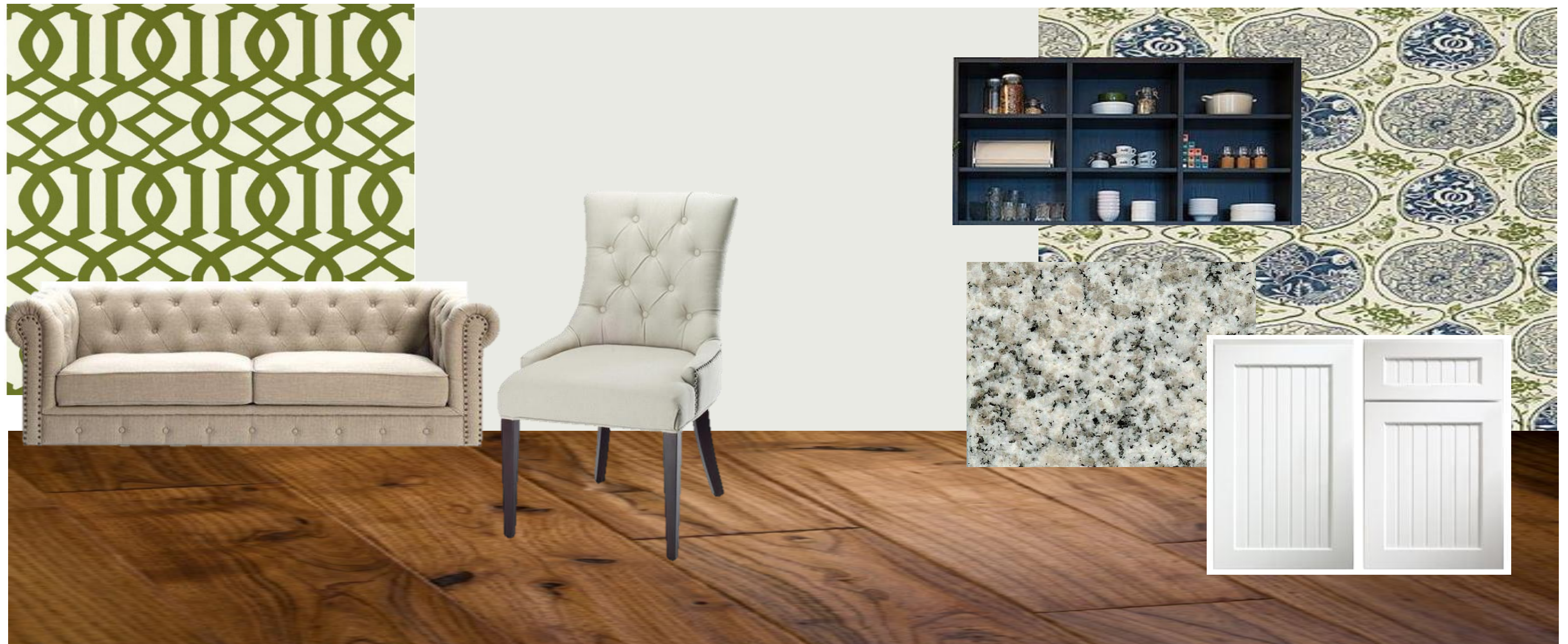
By: Linnea Thomas



# Floor Plan



# Furniture & Finishes



Living room

Kitchen



Master Bedroom



Guest Bedroom



Library



Ceiling Paint

# Option 2



# Custom Seating



# Historical Precedents

Because Pat and Fran came from Pittsburg, their taste is much more different than Greenville. I made sure that I channeled those taste with a lot of color and patterned.

- Arts & Crafts with a touch of modern is the historical style precedent that this condo unit style falls under.
- This style became popular in Europe and North America in 1880 and 1910
- This style was based off of simple craftsmanship using simple form
- It was later displaced with Modernism in the 1930' s
- The Arts & Crafts elements are: the built in furniture, exposed beams, and open floor plan

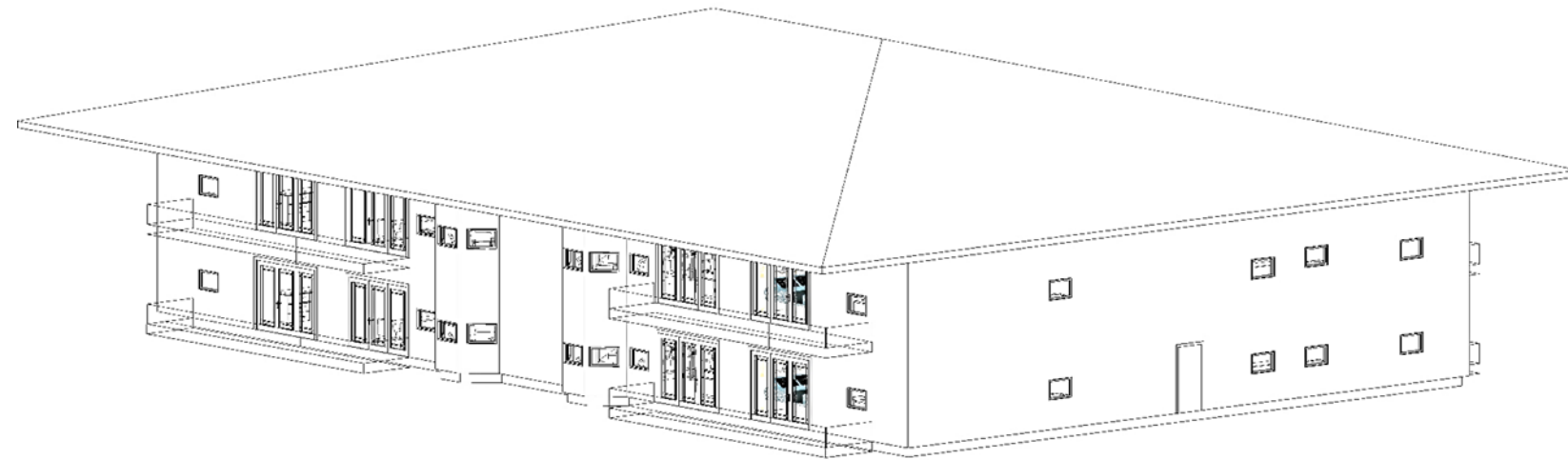




# Human Behavior

- Used bright colors to enhance the moods of the habitants. It is said that people above 55 suffer from depression. Also the contrasts helps the visually impaired navigate through the spaces.
- 
- I gave them a big kitchen space for entertaining because at this age are extremely social. This way they can have all of their friends in the condo over for holiday parties and bingo nights.
- 
- By adding non-generic elements such as patterned wall papers and custom furniture, I made the condo unit feel more personal than a typical residence.

# Story



It was always Pats dream to write in Design & Decor. So when you guys called and asked her to do this interview she was more than ecstatic. The news came at a great time for us; she was diagnosed with an aggressive cancer a few weeks later, and in a blink of an eye she was gone. Before she left this earth, she made a point to tell me to still go through with this interview. Not a day goes by that I don't miss Pat, and I would do anything for her even if though she's gone. So here is her last story.

*...Moving to Greenville was something we needed to do. Our daughter just came back from Iraq and had to get her arm amputated; she then moved to Fayetteville and we wanted to be close to her. Greenville seemed like the best of both worlds because it was much closer than Pittsburg, but we didn't want to seem like overbearing parents.*



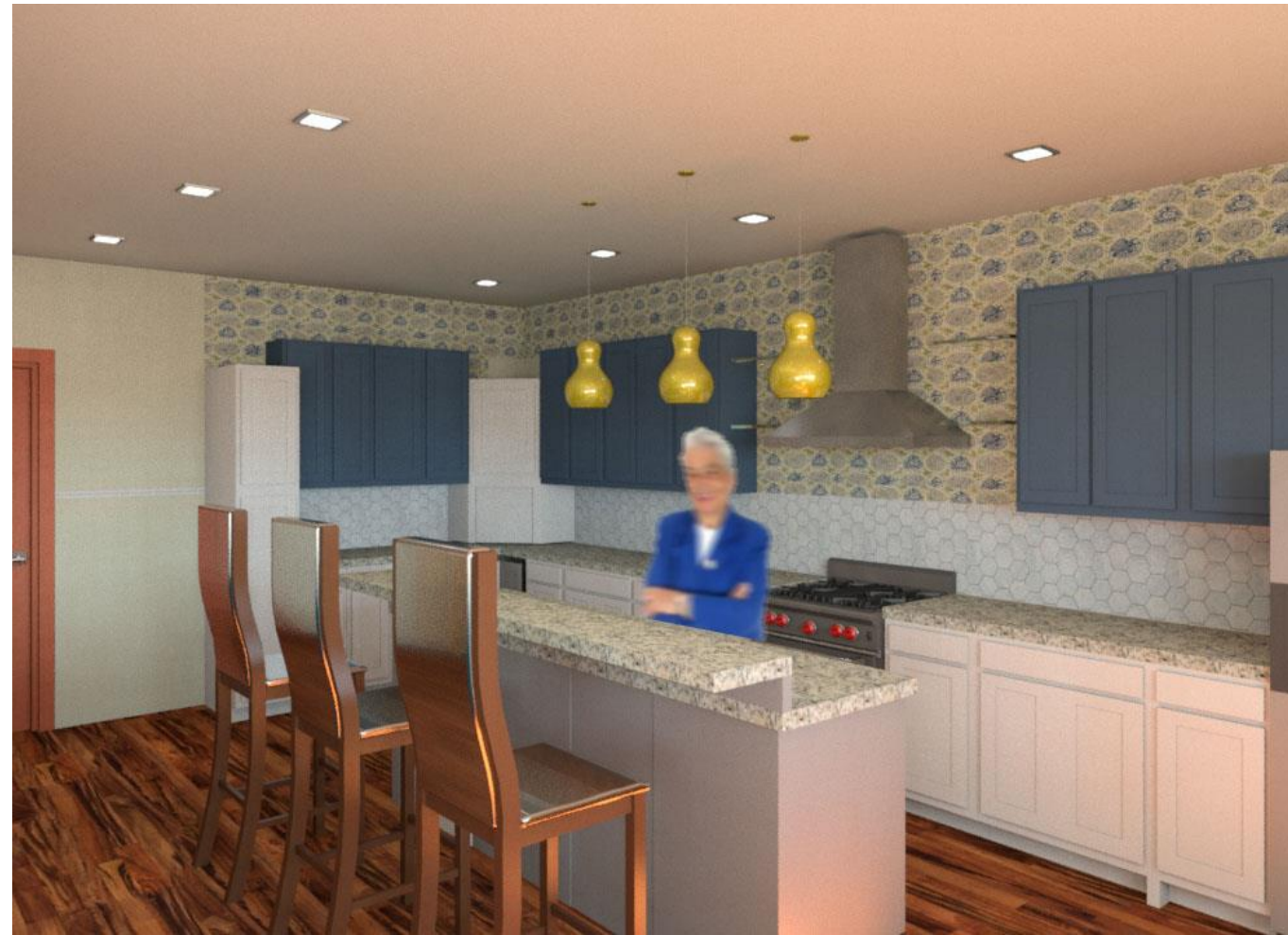
Which we completely are by the way. I remember when we first moved and we showed Dana her room, we stayed in the door way for hours just watching her look around and asking her a million questions about how she felt about the room. We wanted to make sure that it was soothing and relaxing for her since she lived in such a drastic environment for so long. I can't tell you how many time Pat asked if she liked the palm leaves wallpaper. She kept saying that we were hovering, which is completely true. We were helicopter parents, and we we're proud of it.

*We were nervous to move into a senior living condo coming from our family house in the great city of Pittsburg. We thought it was going to be typical boring place, but Fran being the amazing husband that he was, surprised me with an interior designer to design the perfect place for us.*



I wouldn't say I'm completely perfect, but I'm pretty darn close. But I was also worried about the move. Greenville was a lot more slow paced than Pittsburgh. I was afraid that I was going to be bored all the time. But when our designer was done, our apartment was anything but. Being deaf, I need a lot of visual stimulation to keep me engaged throughout the day. Our designer decided to have a lot of accent walls with bright geometric wallpaper in each room.

*I can honestly say that Linnea turned this condo into a home. She flew out to Pittsburgh to see us on countless occasion, always updating us on the designs. I fell in love with the kitchen, and after that everything followed suit. Off the bat, the two toned cabinets made the condo stand out from anyone else.*



Pat and I would host a lot of dinner parties with the friends we made in the community. I distinctly remember one time when our friends came over and lost their mind seeing the two toned cabinets in the kitchen. They were so jealous that they thought our condo unit was the generic unit and not personalized. Our apartment was a huge hit; I honestly think our friends just came over to look at the kitchen. There was so much space for everyone, our friends would always crowd around our island and listen and watch as Pat cooked.

*There were so many visuals and textures that made me feel comfortable in a new place. She even thought about my daughter; making sure her room was serene and soothing for her, and our grab bars in the bathrooms.*



When Pat died, Dana lived with me for a little bit. She may say that we are helicopter parents, but she is definitely a helicopter child. She was very grateful for the amenities that were given to her to aid her with her disability.

*If asked to pick a favorite room in the house I would have to say that I have to say the library nook that Linnea created for us. I am an avid reader, especially when it comes to my décor books. Me and Fran would sit there for hours just reading and sipping coffee. That was one of my favorite moments living in the condo.*



I have to say that she is right. Those were the best moments that we shared in our new condo. Linnea incorporated one of our heirlooms that was passed down for generations on Pat's side. Sitting in that settee now is a little bitter sweet; it reminds me of Pat and all the hours we spent sitting there, but my heart also aches because of it. One of the things that I'm going to miss most about Pat, is sitting at our dining room table having brunch, or watching her write speeches at the desk while at read the paper. She was supposed to retire in 5 years, but we all joked that once the time came she would back out. I wish she had the opportunity to back out. I miss Pat every second of my life, and I'm so happy that our designer made us fall even more in love with this condo. Thank you for giving me more memories with my amazing wife.