

# PORTFOLIO 2



# Altlich



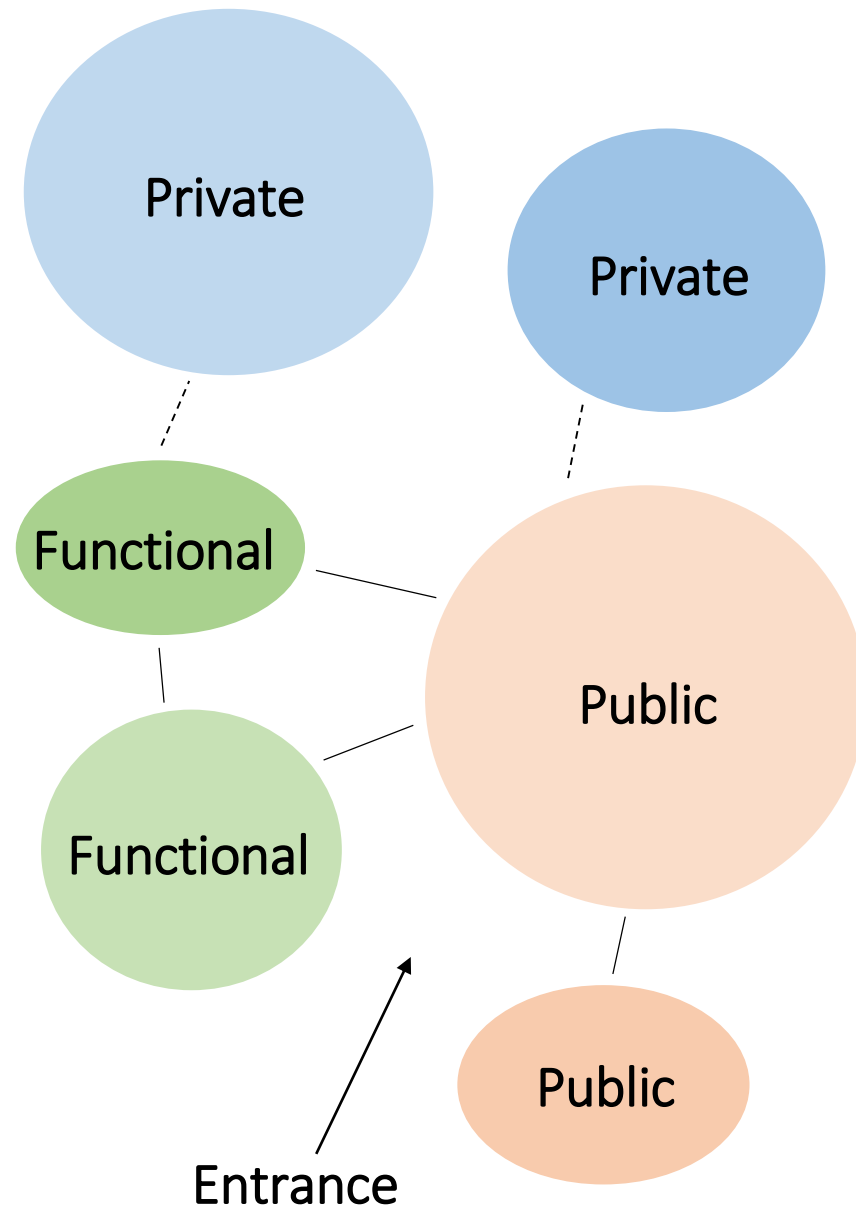
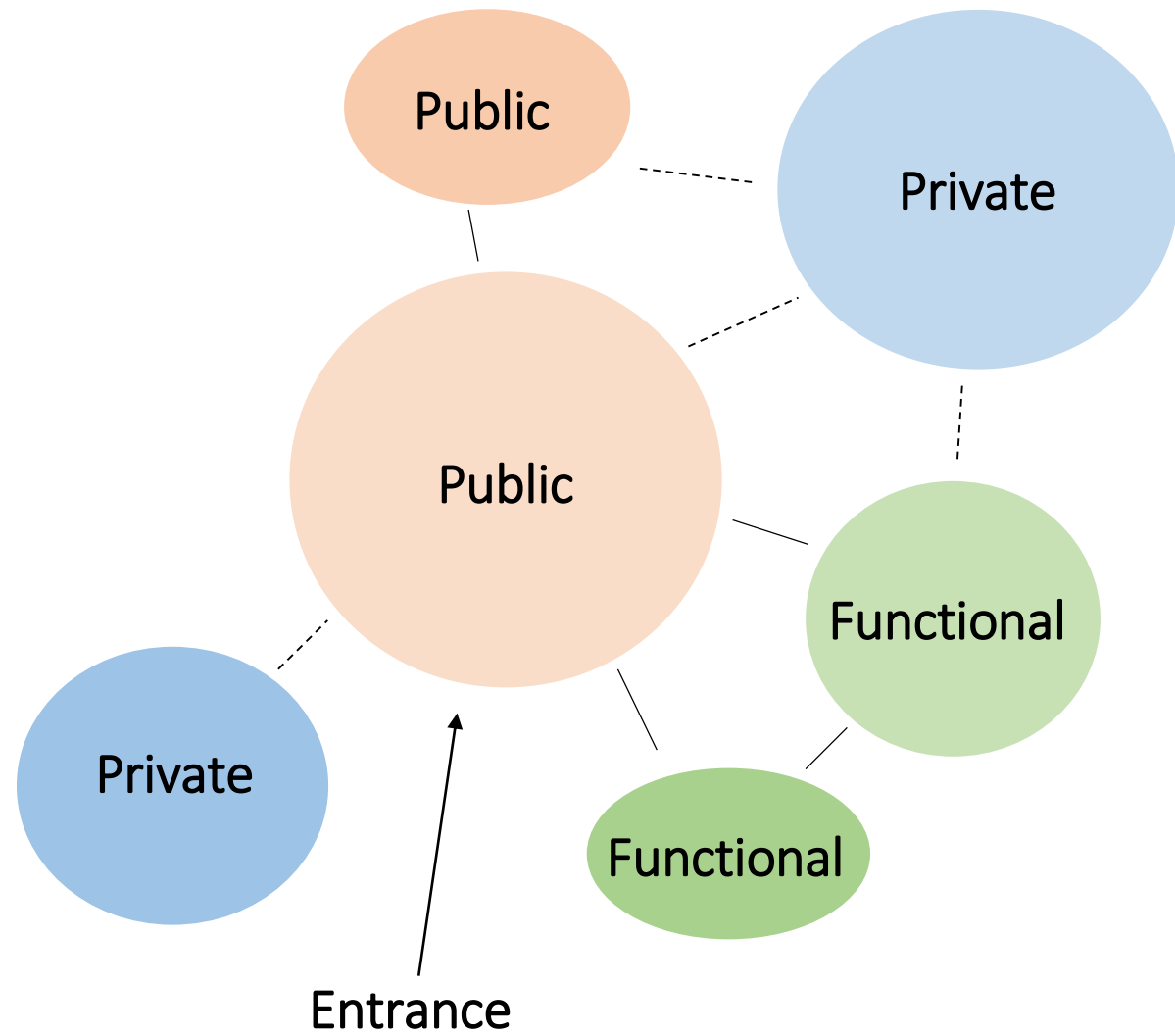
- *Persons over the age of 55 who would like to remain in the same home for the years to come*
- *Persons with disabilities*
- *Families looking to down size*
- *People interested in senior socializing*
- *People interested in clubhouses & activity centers*
- *Desire to be close to good healthcare*

# Greenville

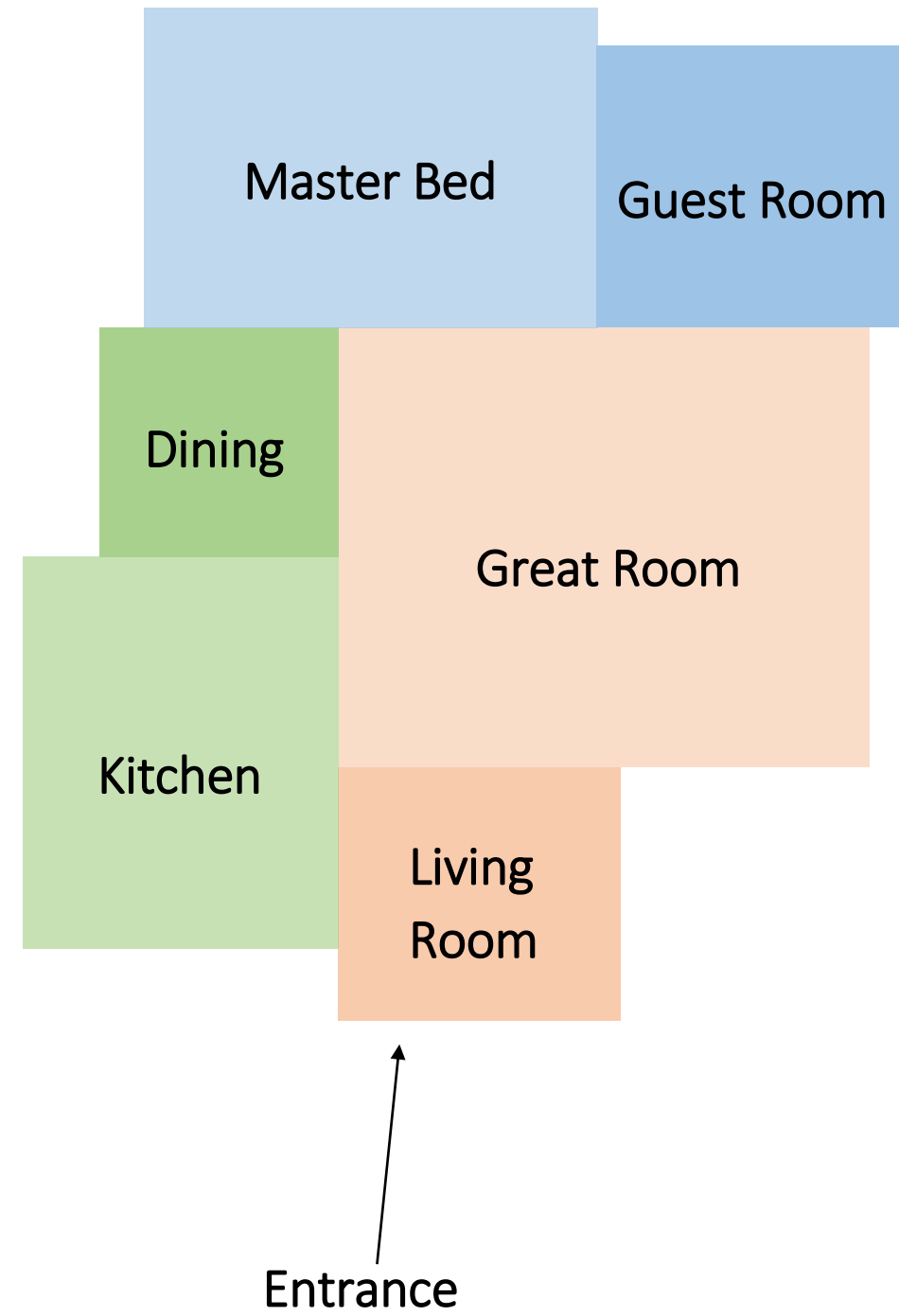
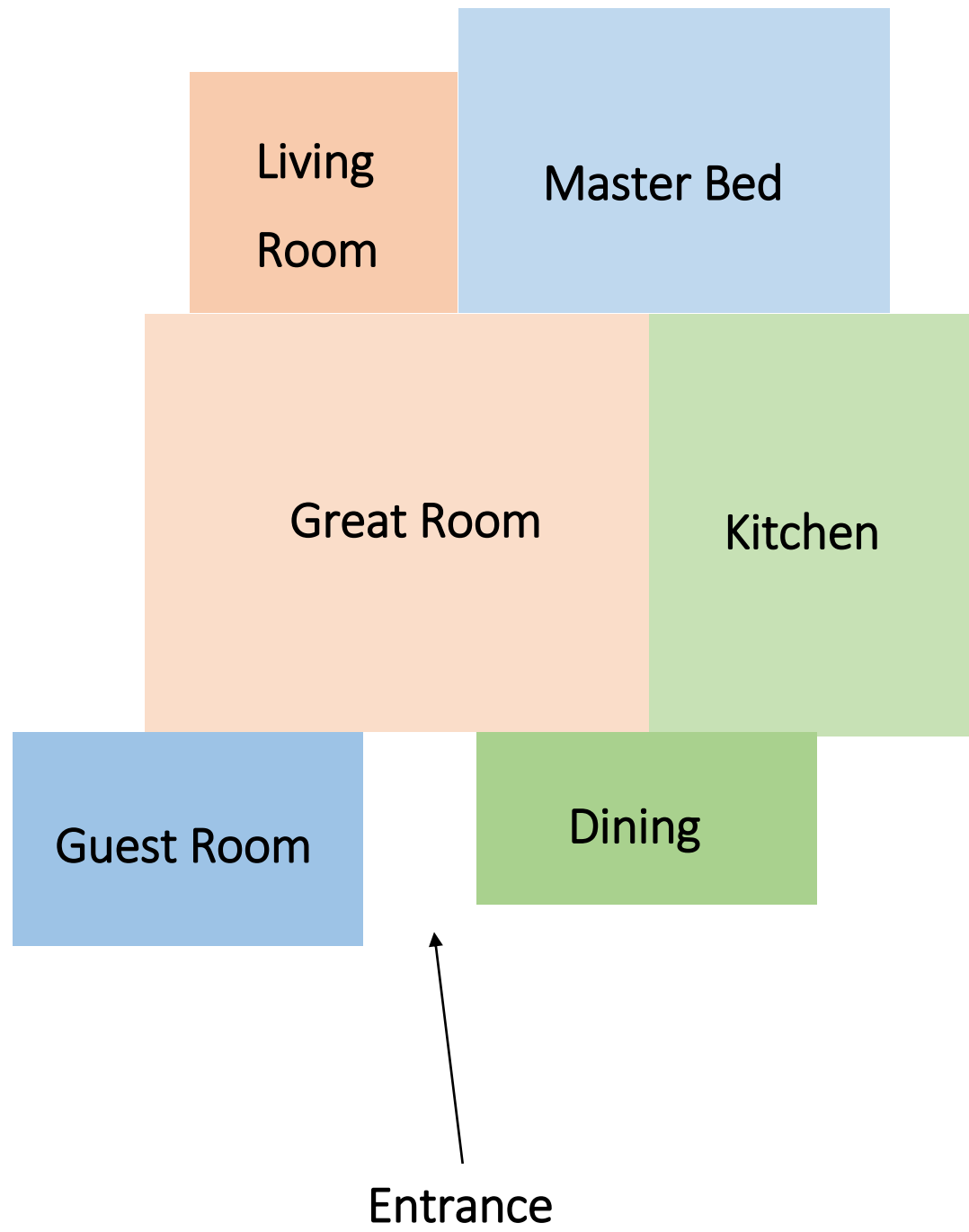
Why choose *Greenville* as your new home:

- *Close proximity to a well-established and advanced hospital*
- *Growing desire to live in this resourceful city*
- *Abundance of restaurants and shops*
- *Warm and sunny weather*





----- Weak  
 ——— Strong





# Square Footage

Foyer 53 sqft (about 8'-6" x 6'-0")

Hallway Space 159 sqft (about 5'-0" x 29'-0")

Living Room 340 sqft (about 16'-0" x 21'-0")

Dining Room 173 sqft (about 17'-0" x 10'-0")

Kitchen 118 sqft (about 9'-6" x 12'-0")

Laundry/ utility closet 111 sqft (about 8'-0" x 13'-0")

Master Bedroom 402 sqft (about 21'-6" x 21'-0")

Master Bath/Closet 136 sqft (about 8'-0" x 16'-0")

Guest Bedroom 206 sqft (about 13'-0" x 15'-0")

Guest Closet 36 sqft (about 4'-0" x 8'-0")

Guest Bath 90 sqft (about 8'-0" x 10'-6")

Porch 76 sqft (about 6'-0" x 12'-0")

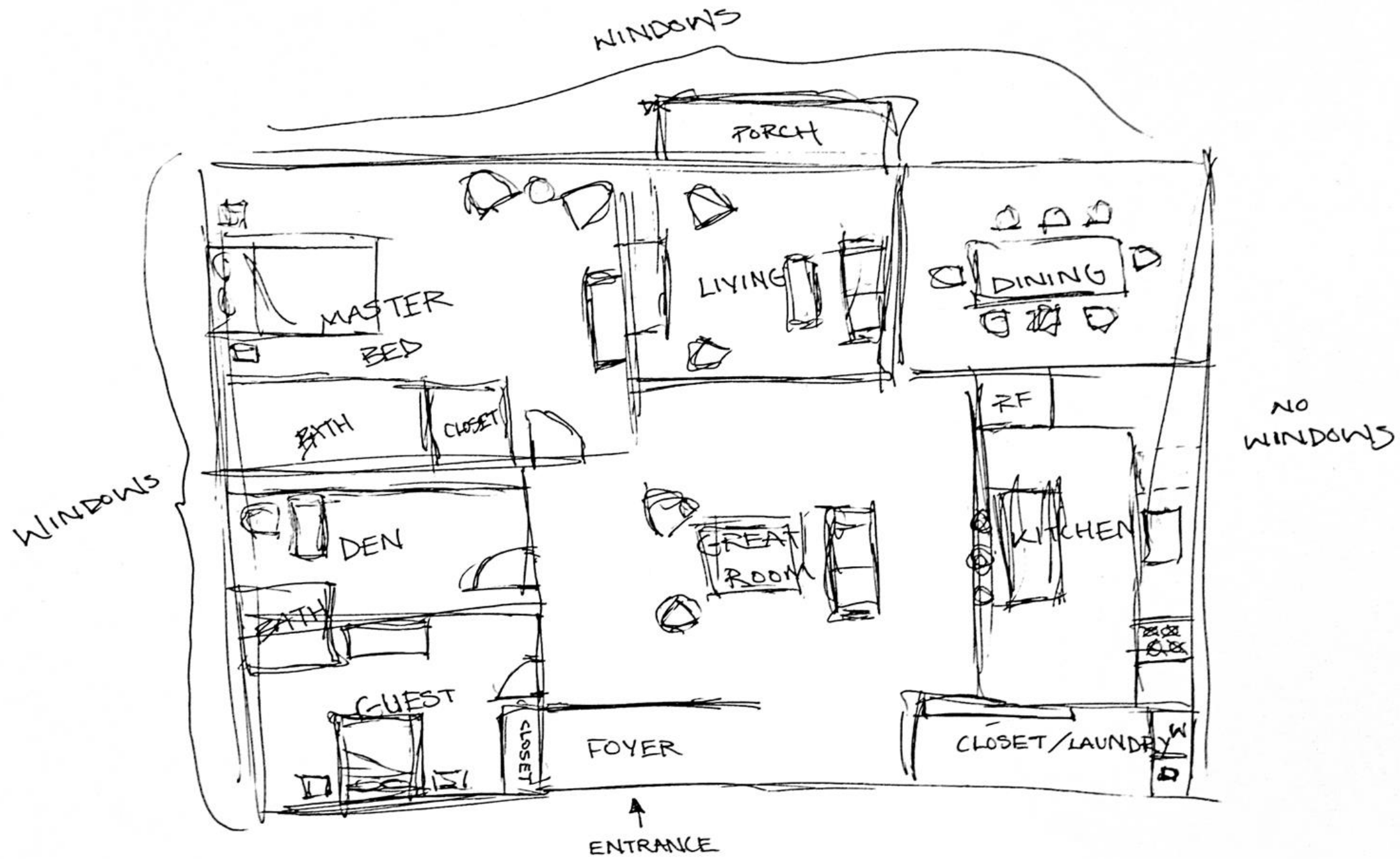
---

Total Sqft: 1900 sqft

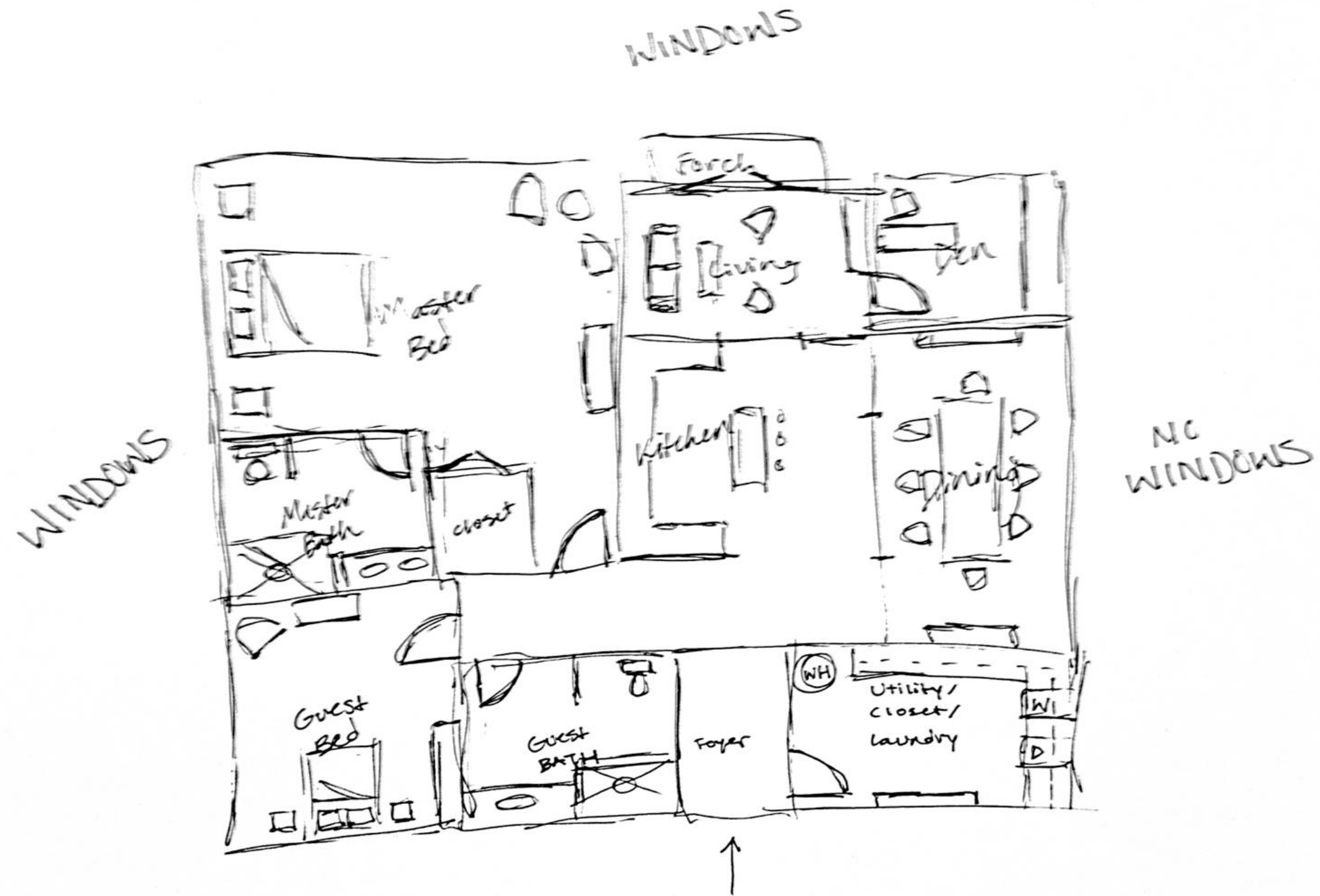


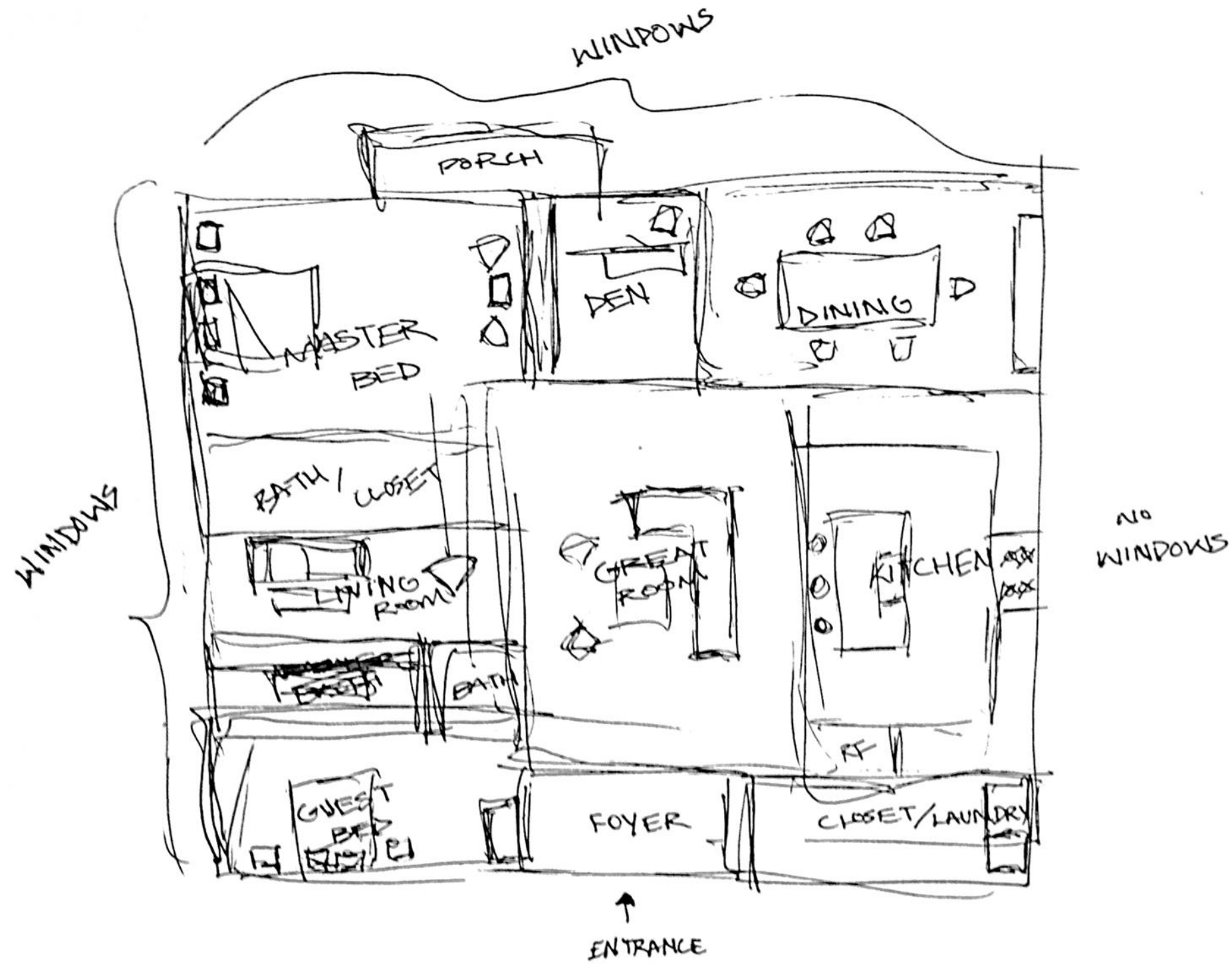




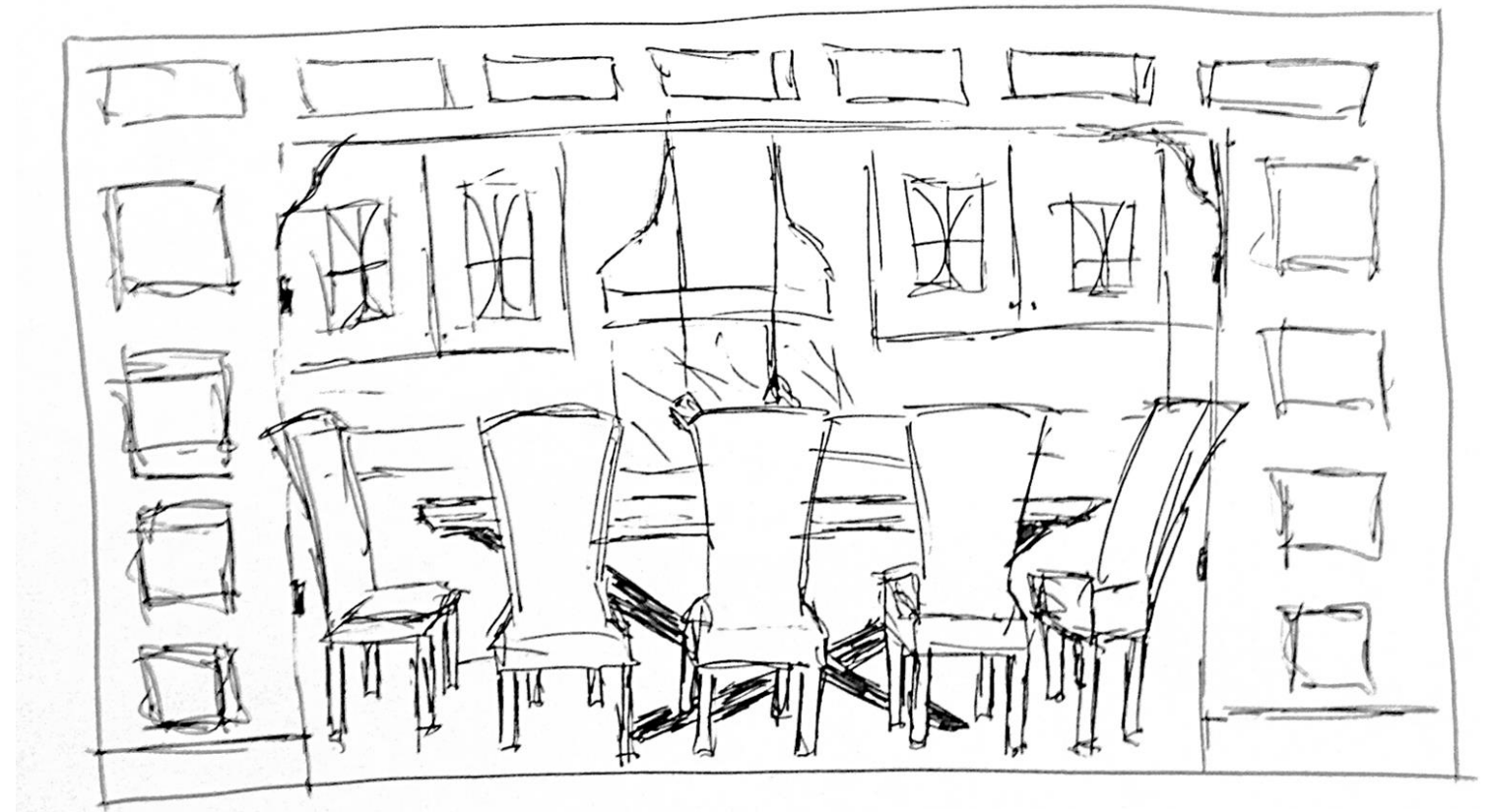
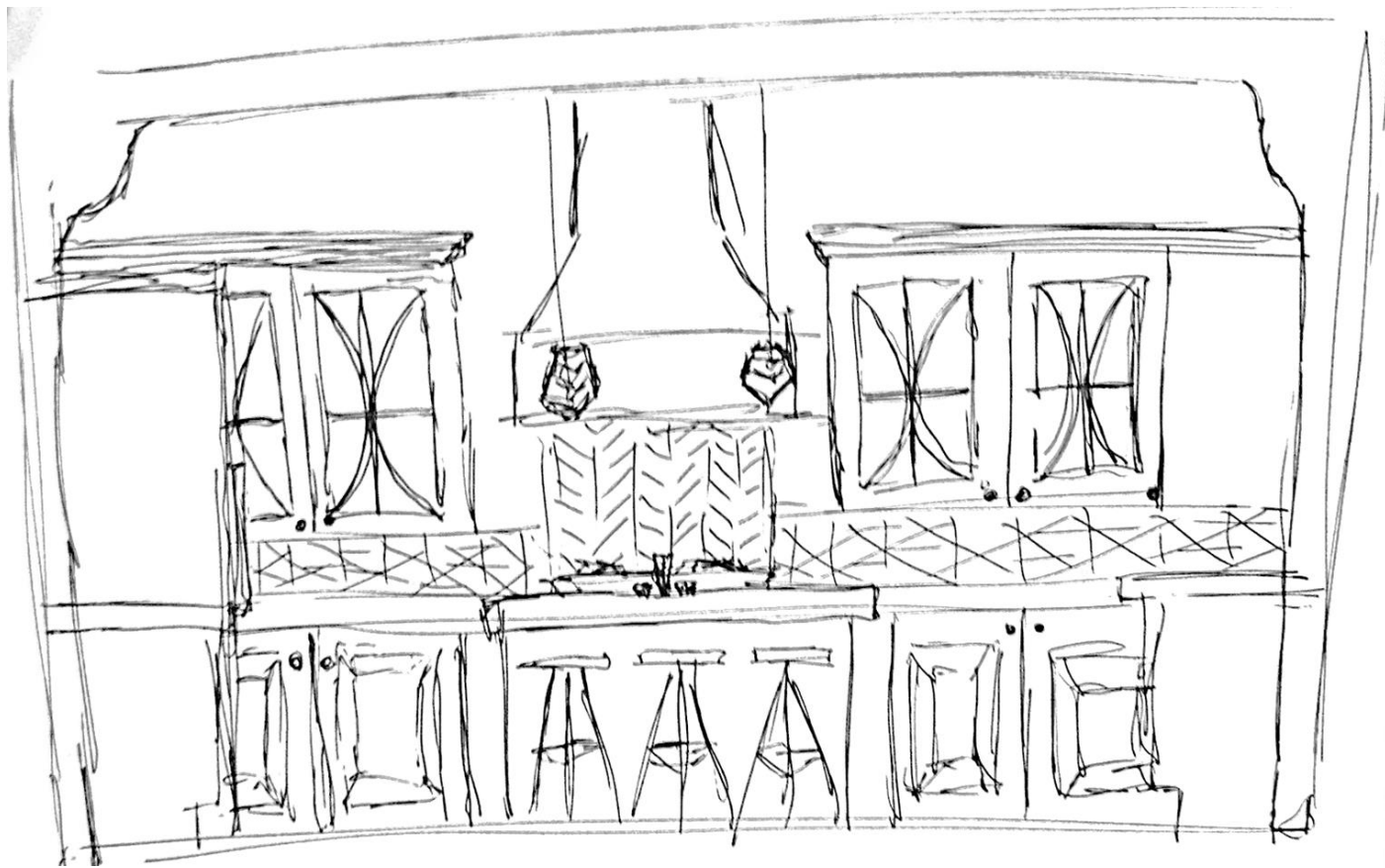


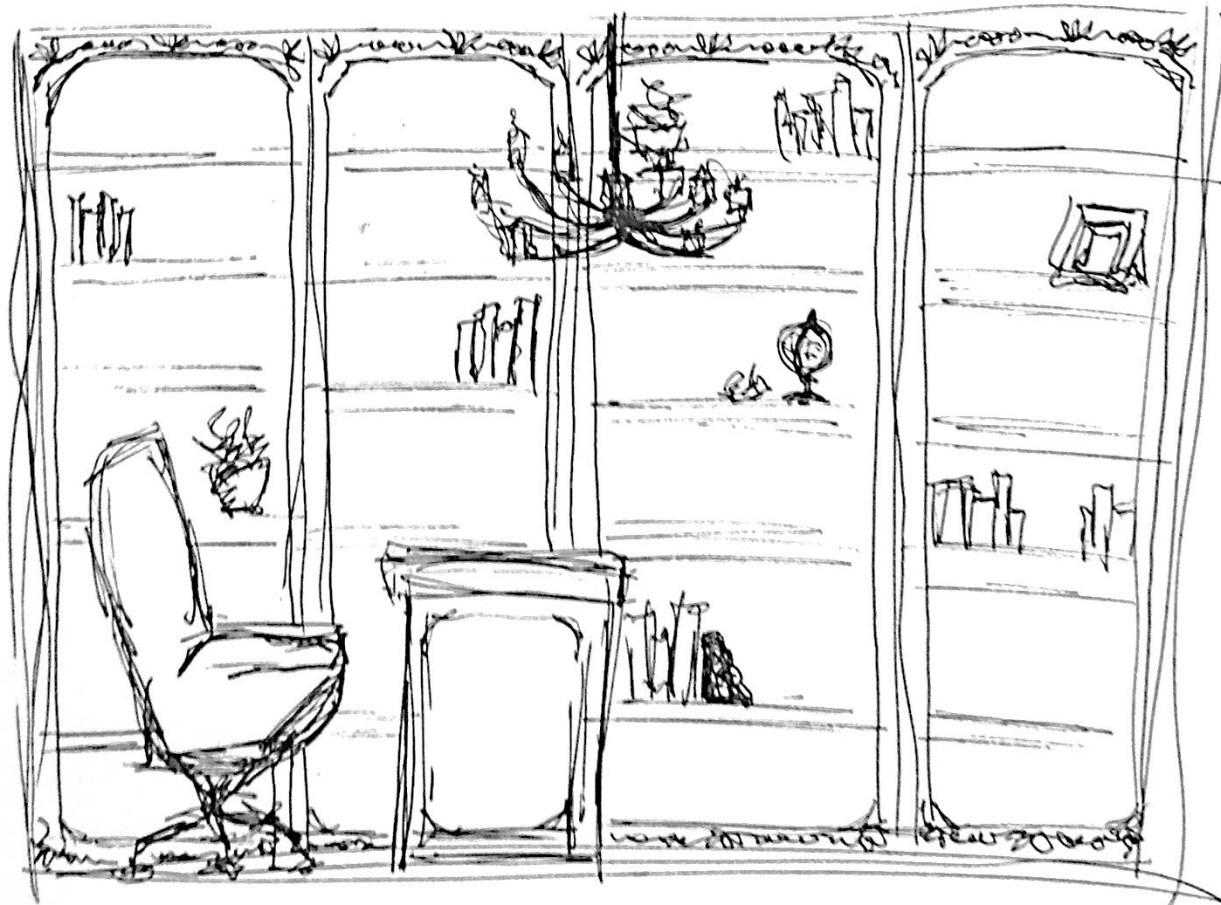




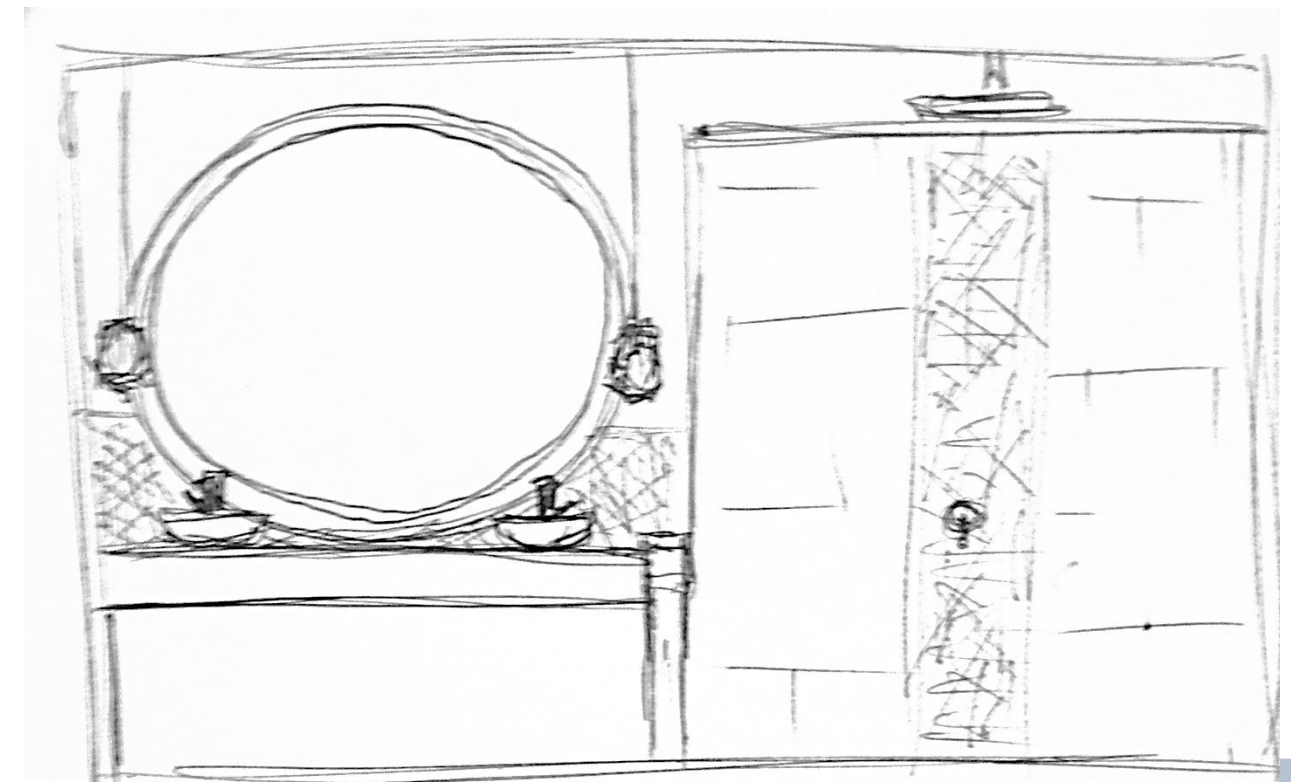
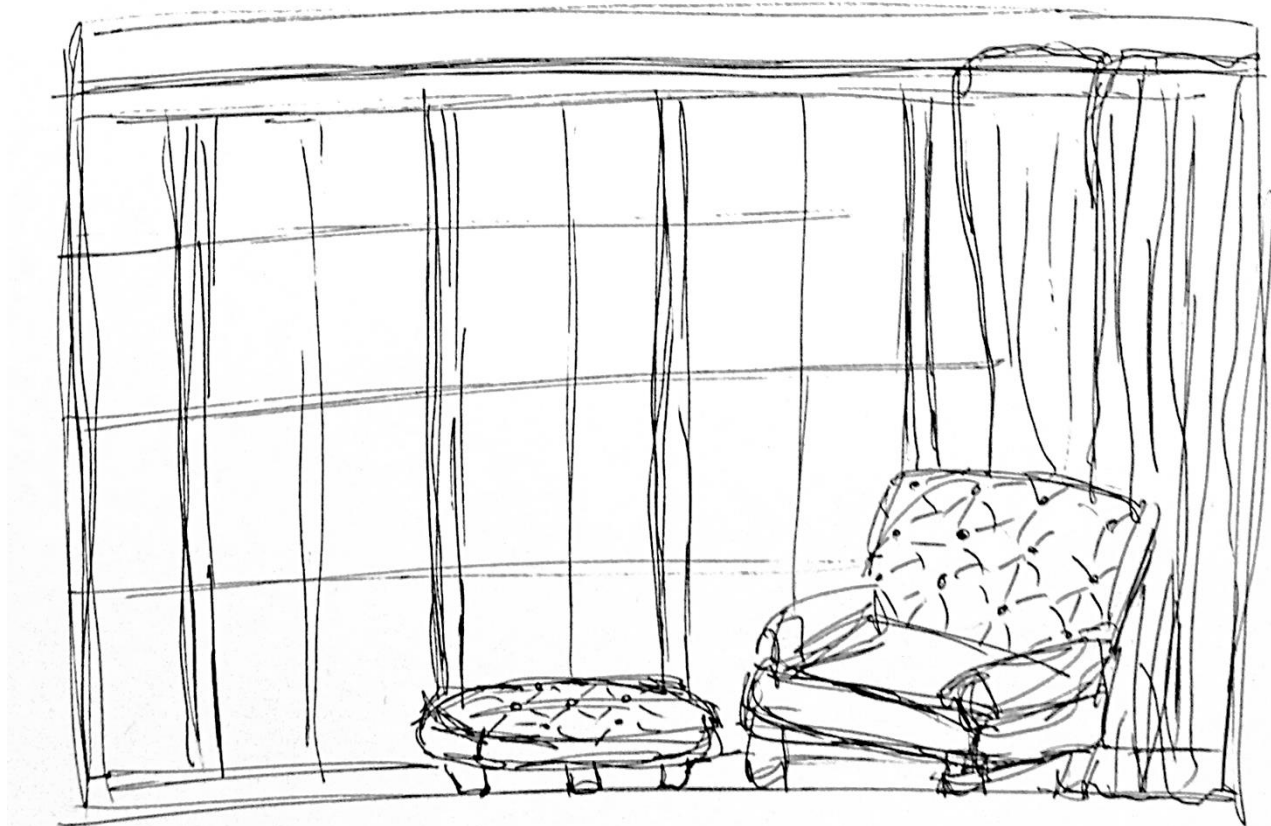




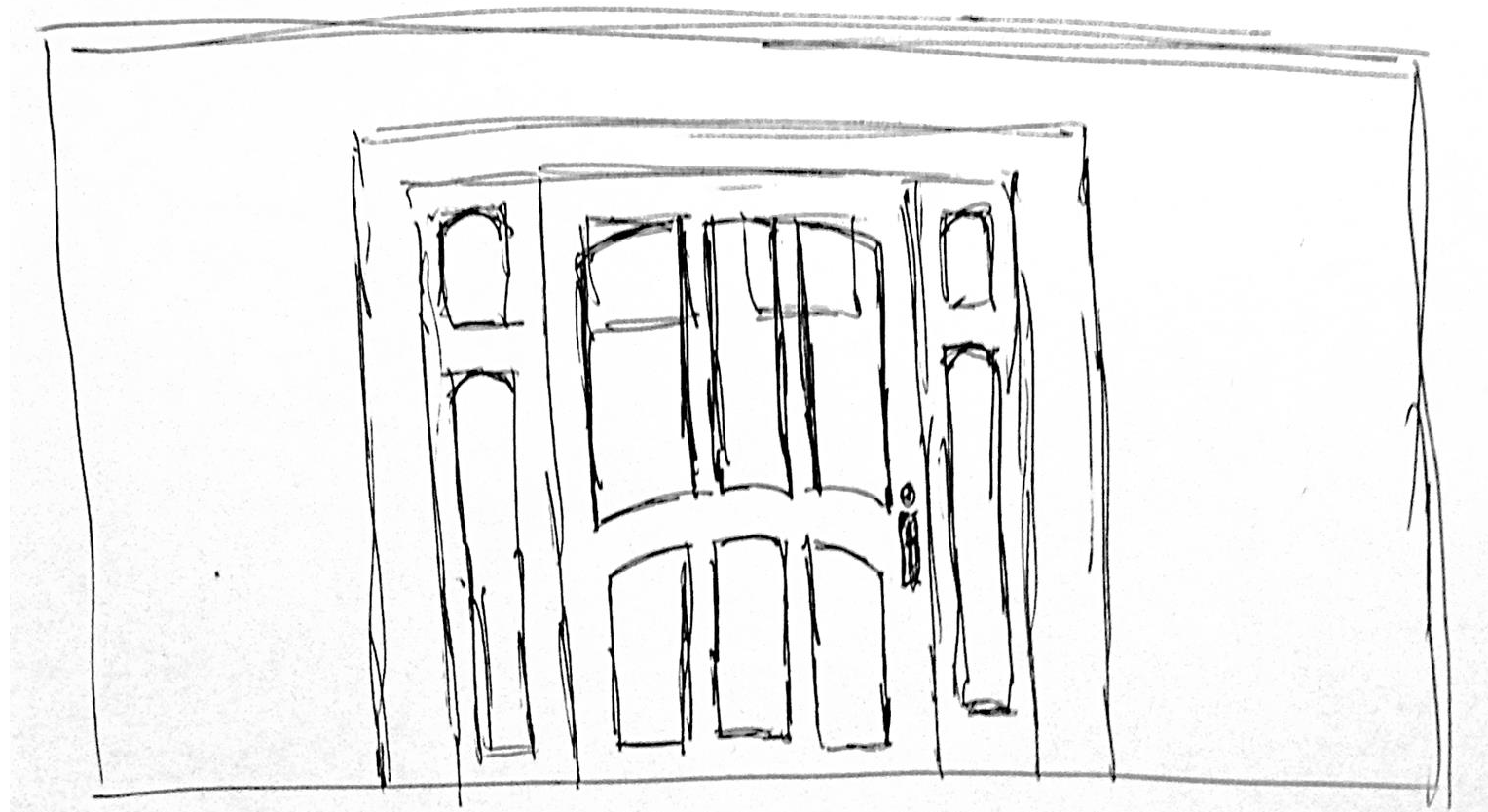
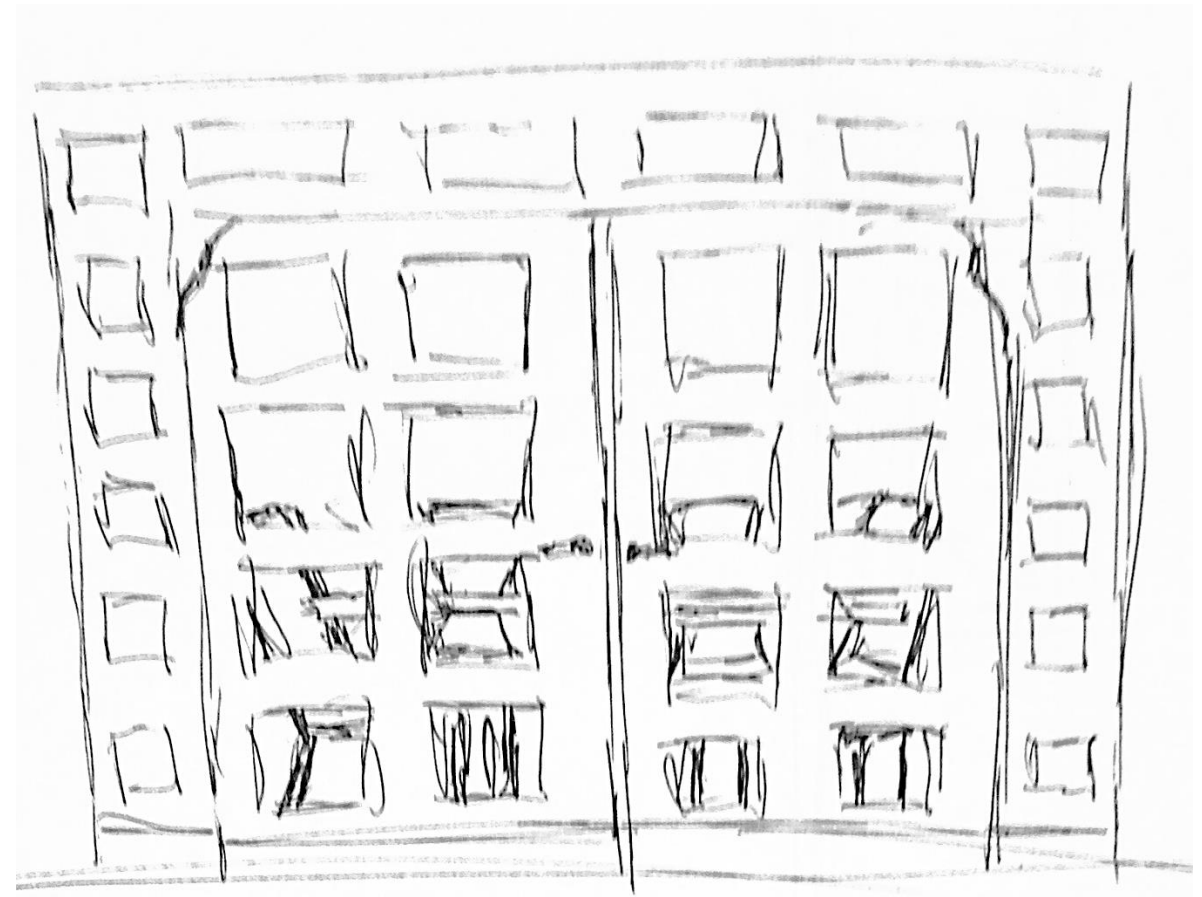
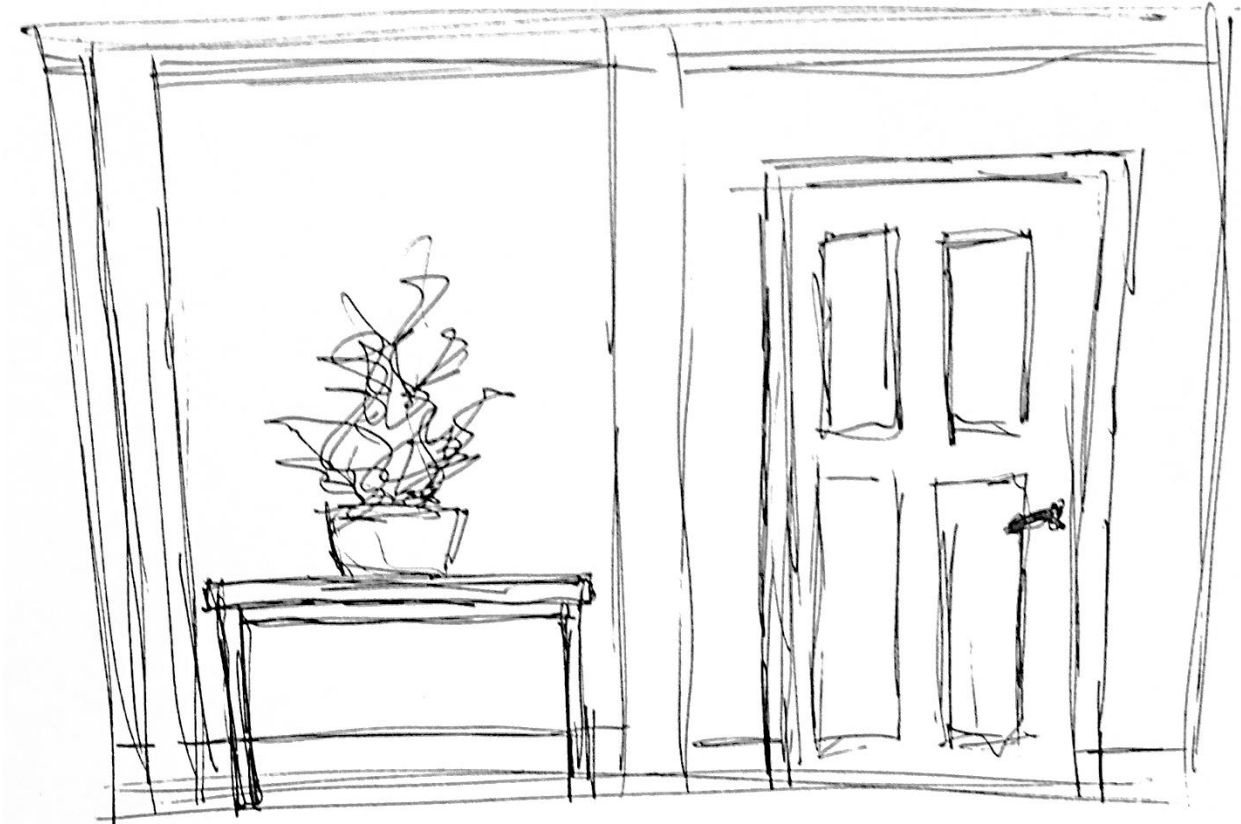




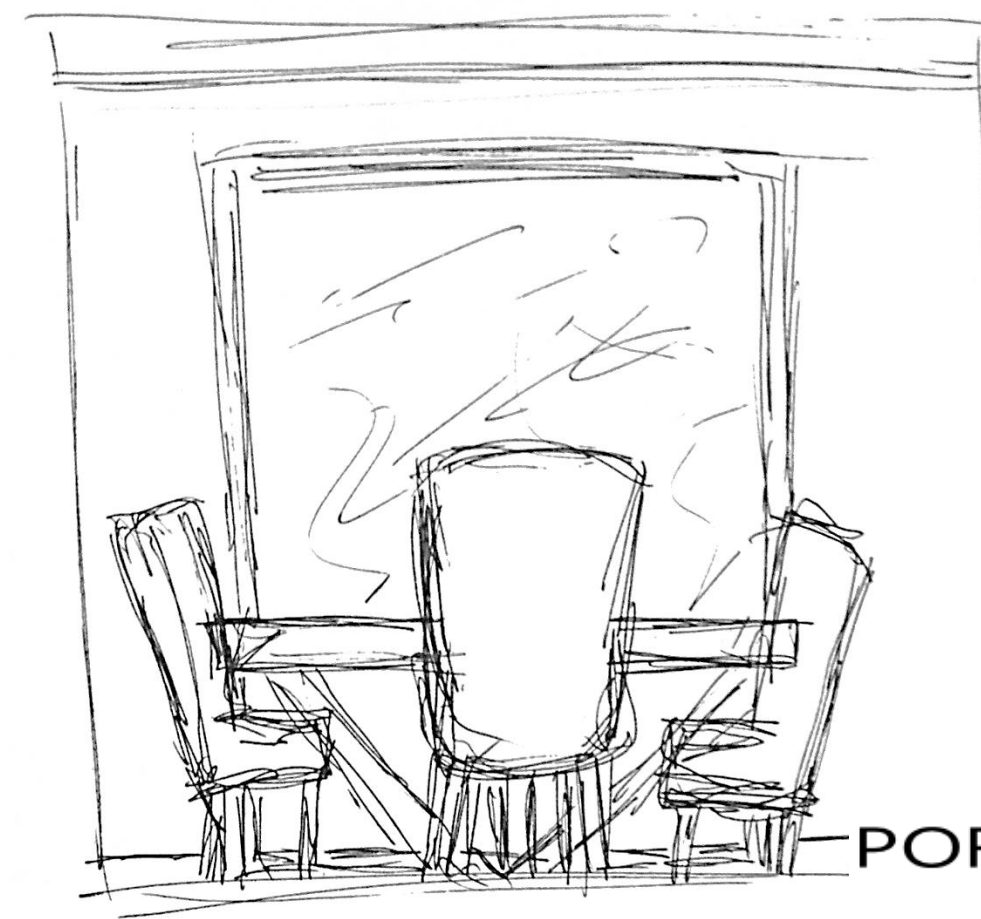
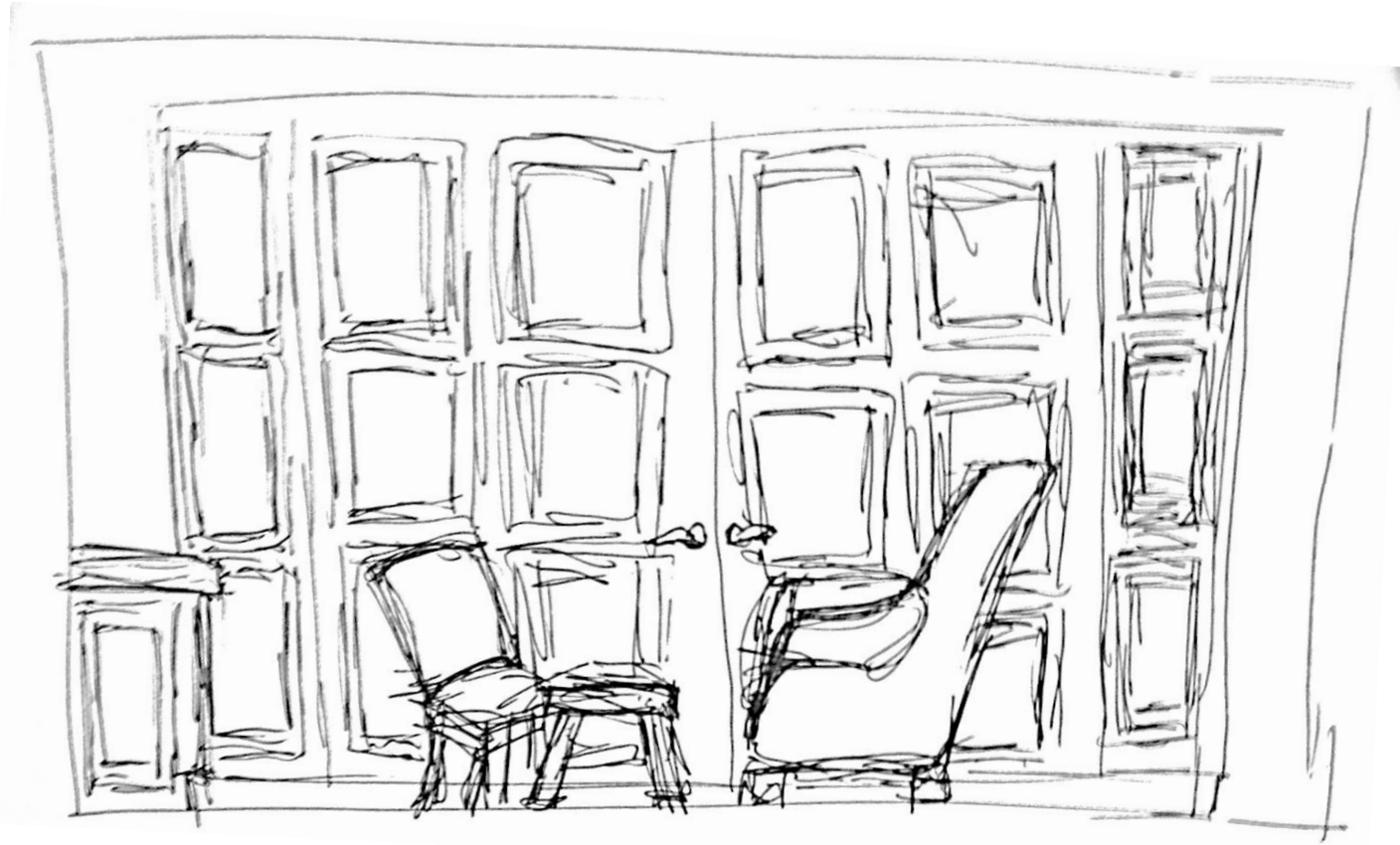




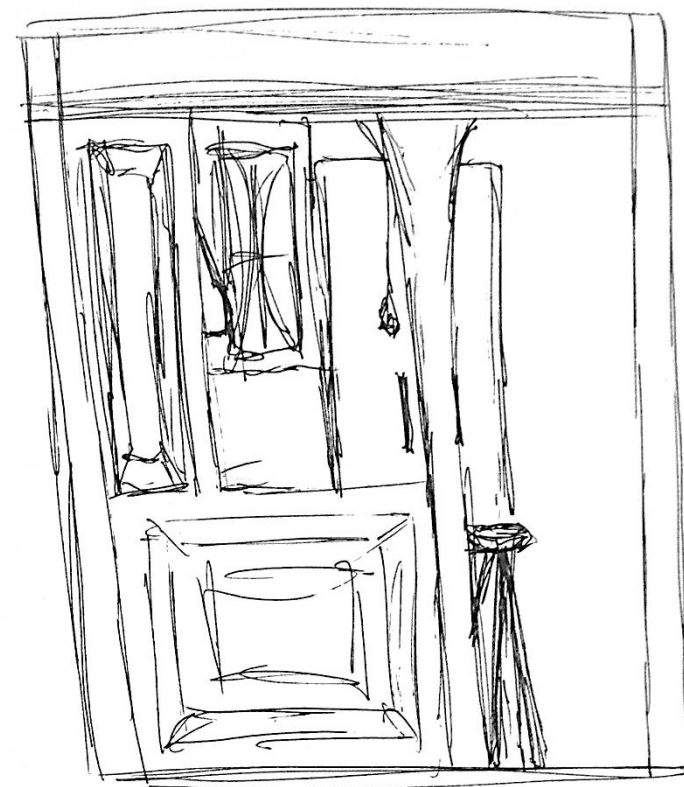










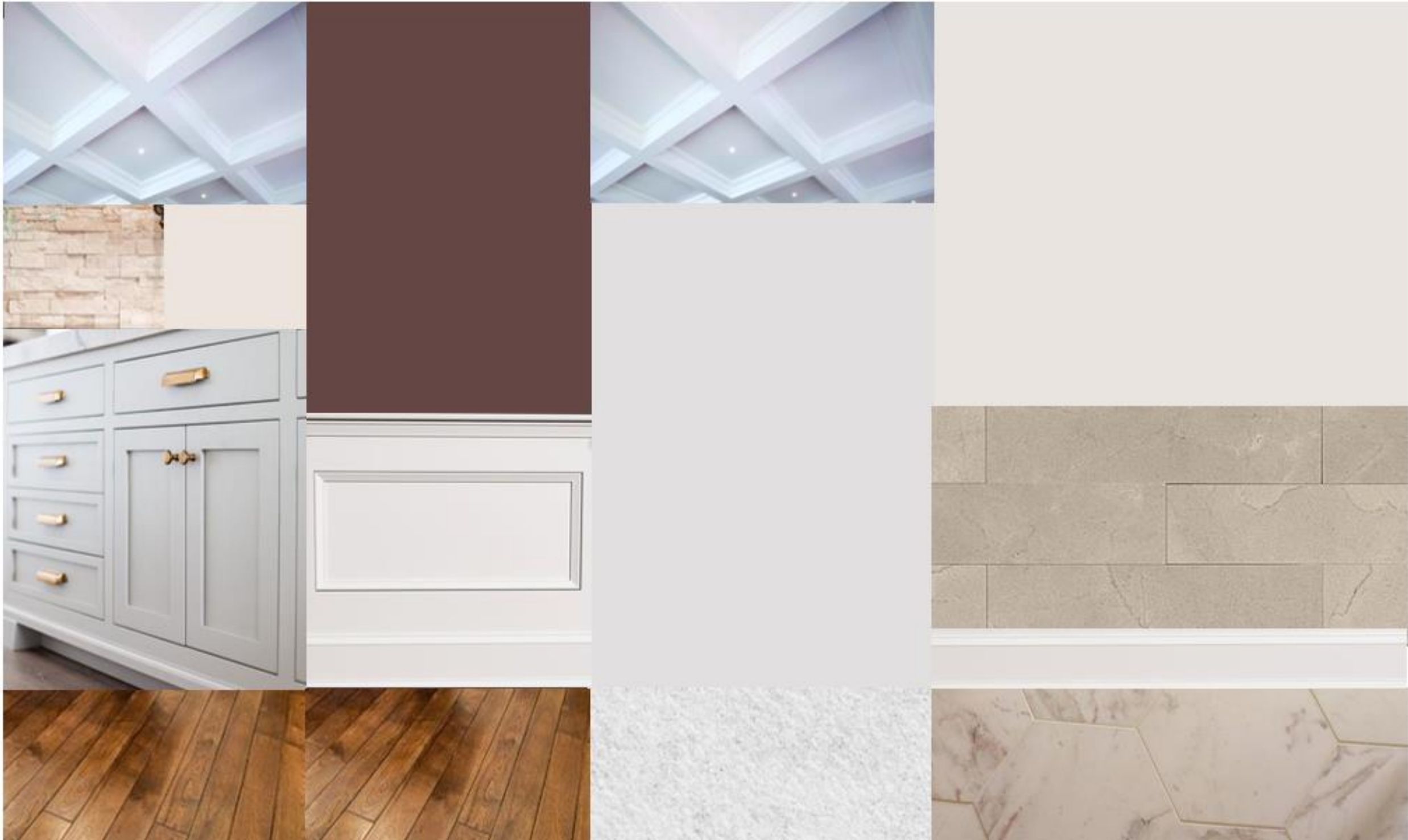


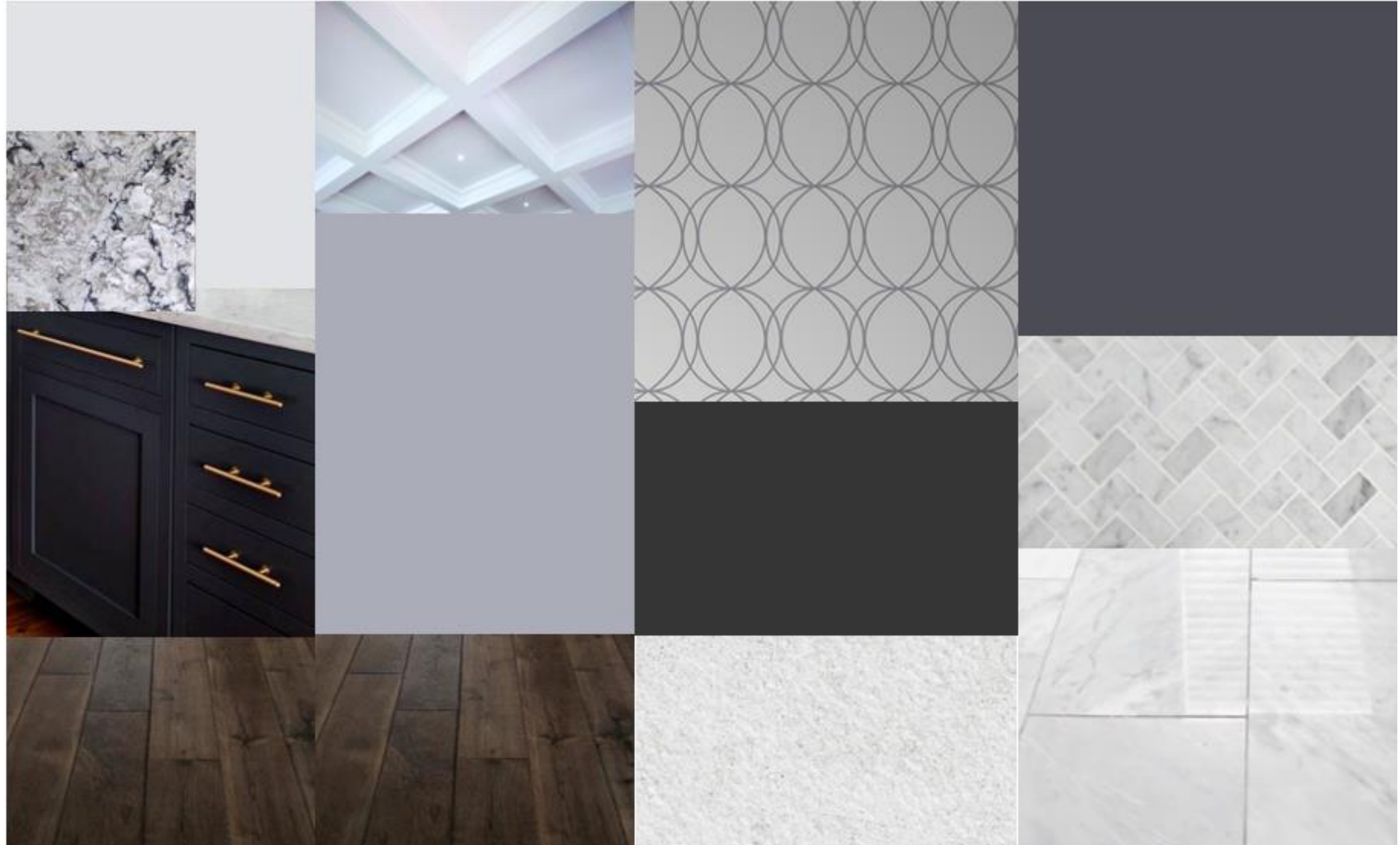




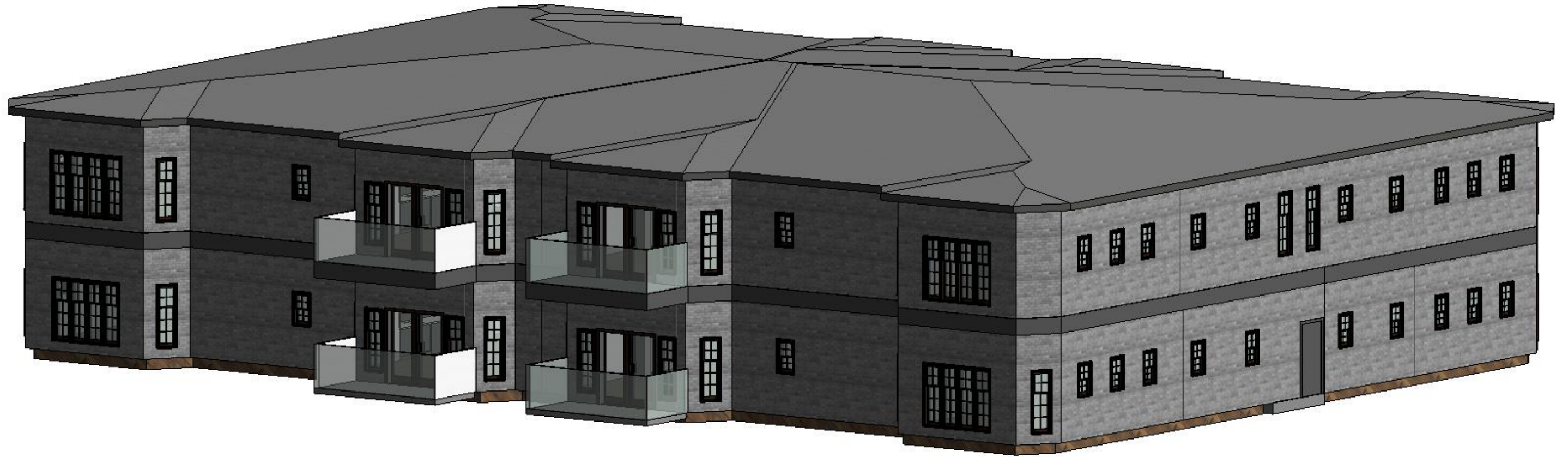


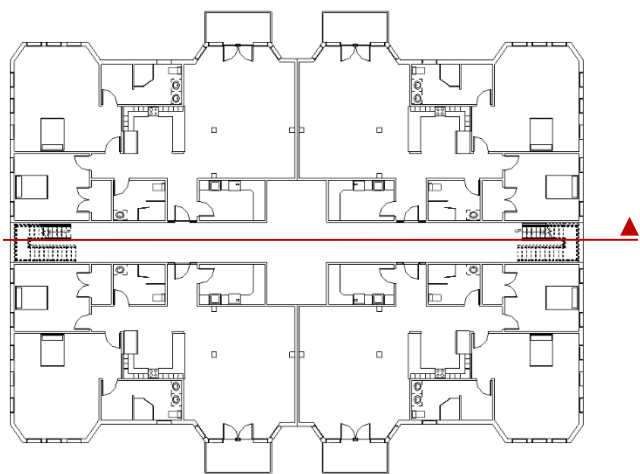
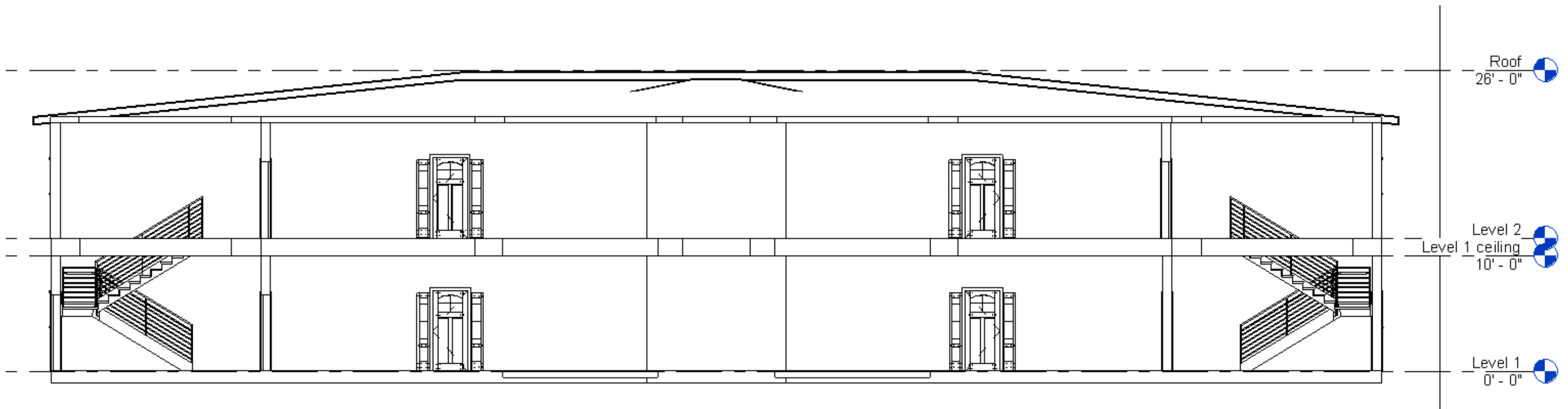






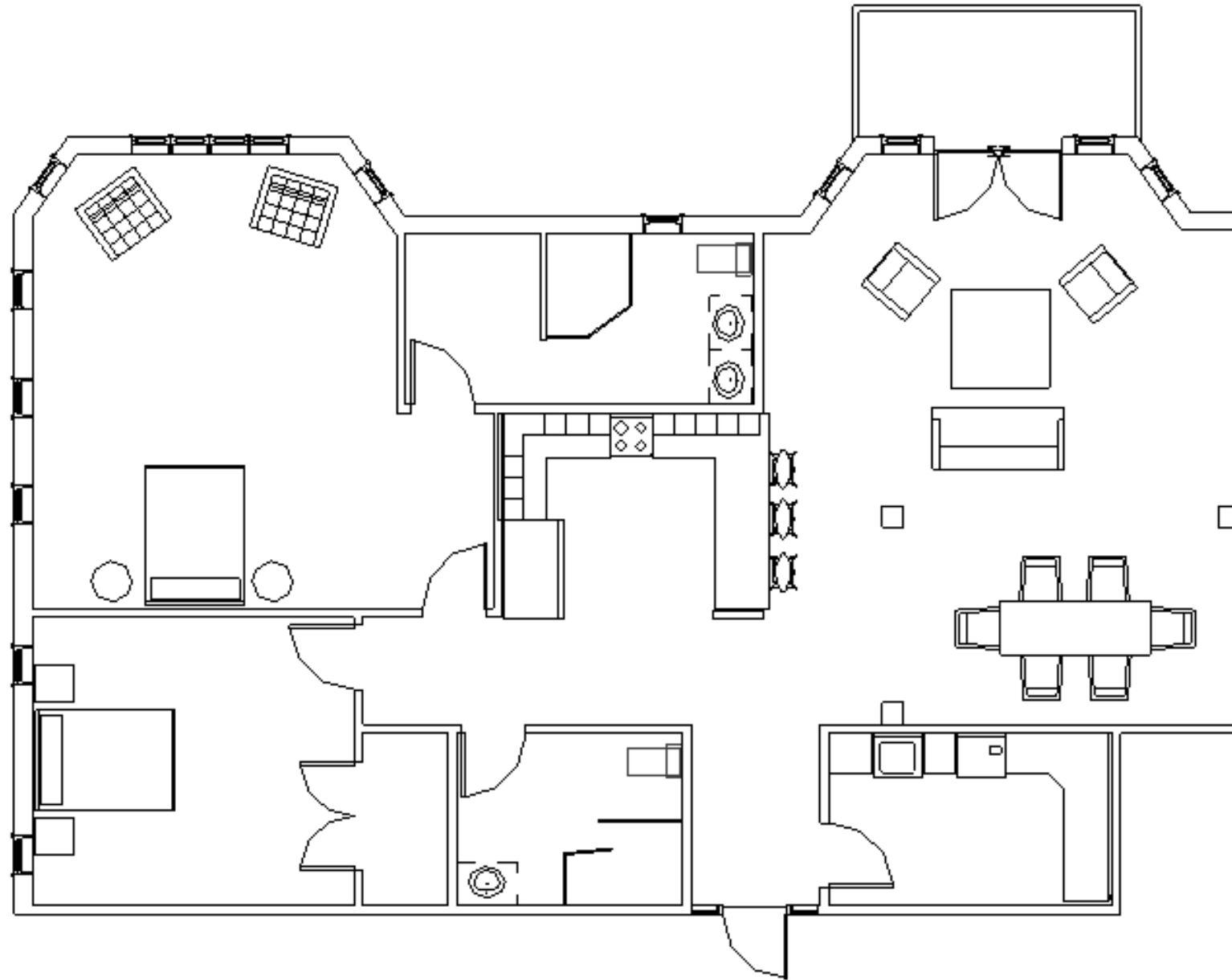
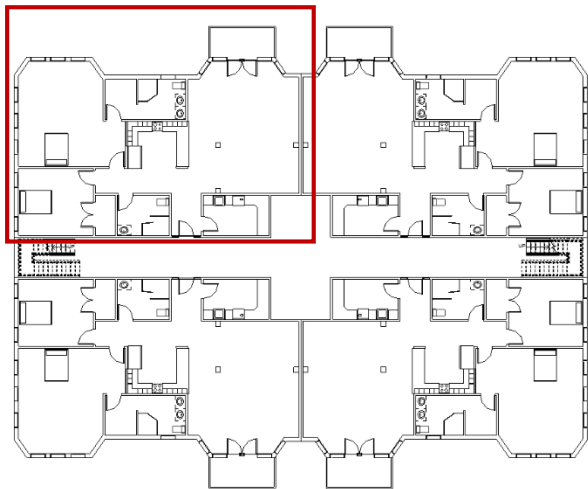




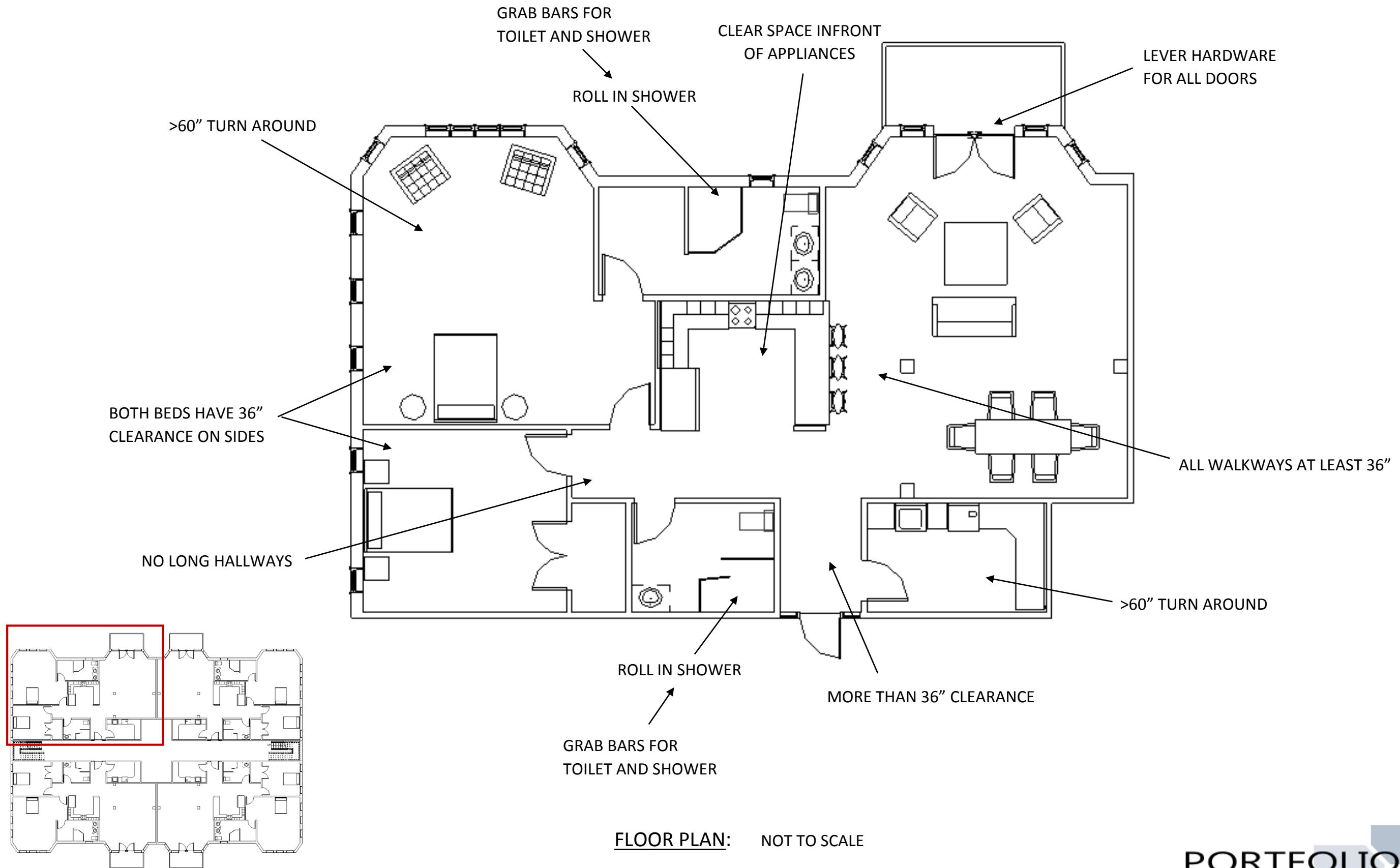


SECTION VIEW: NOT TO SCALE



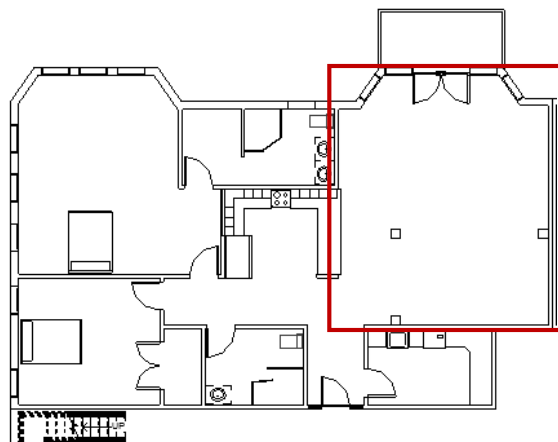
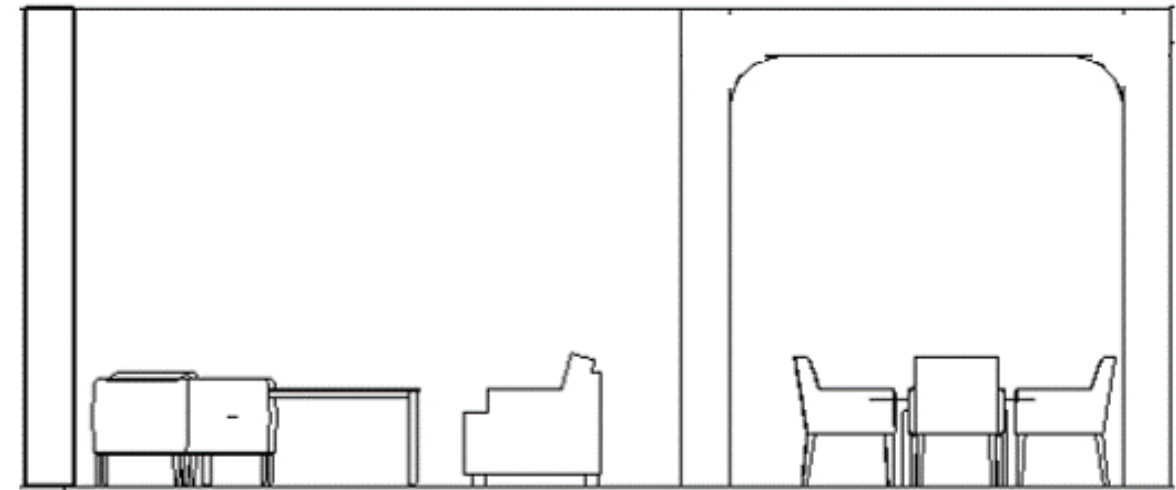
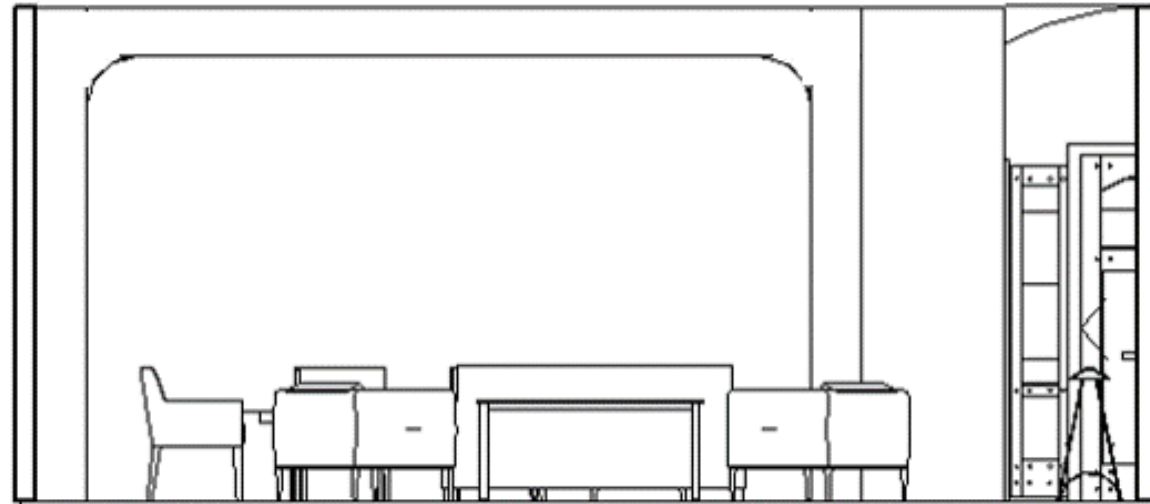
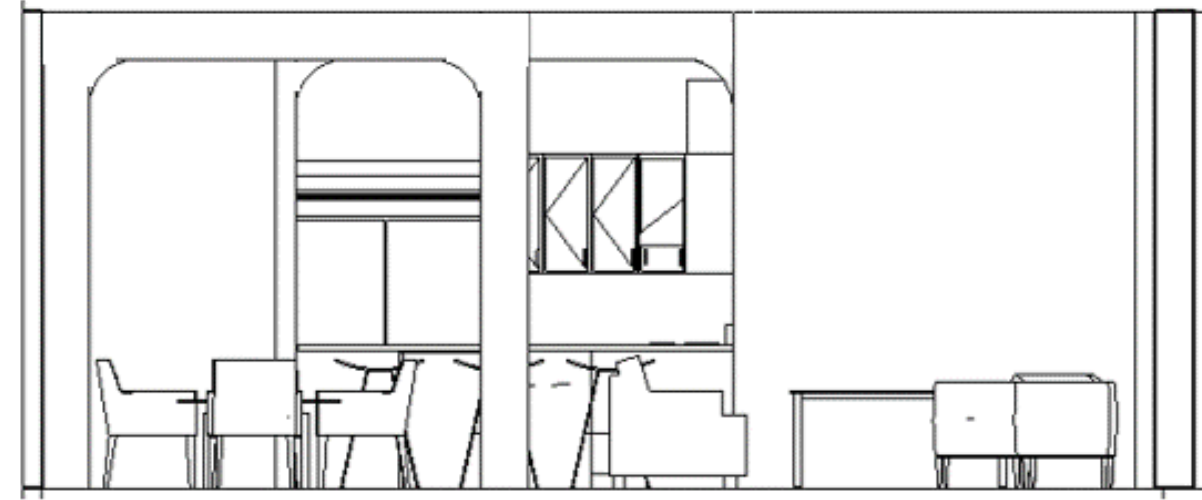
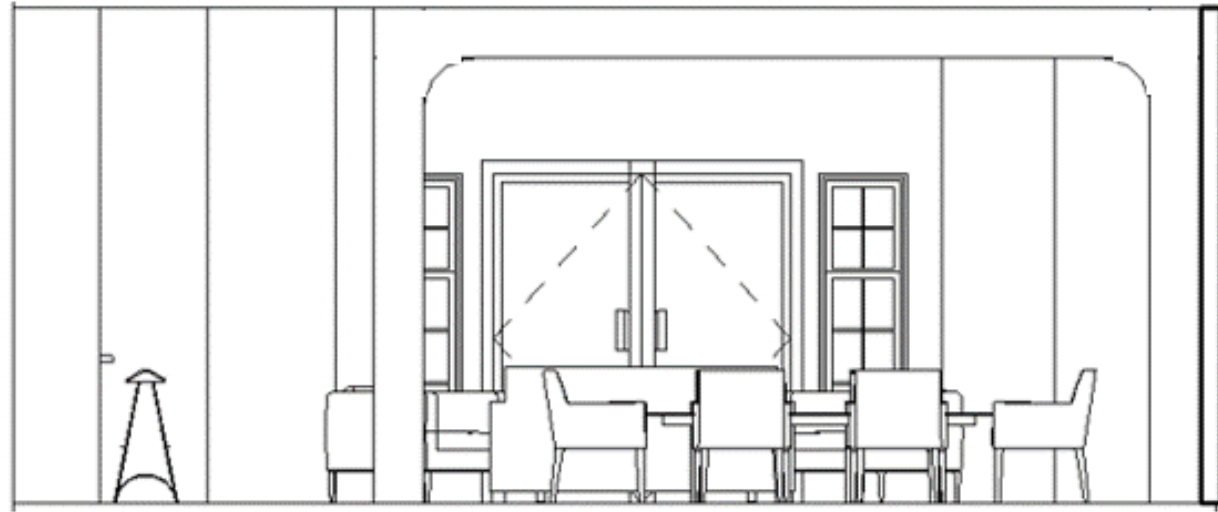


FLOOR PLAN: NOT TO SCALE



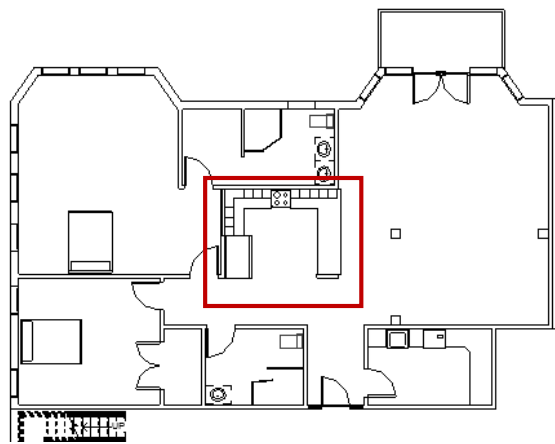
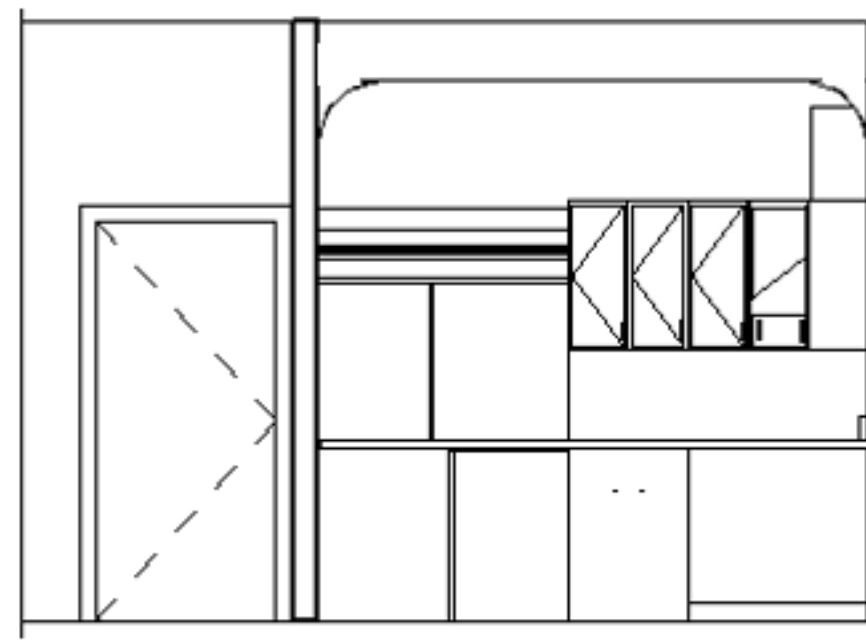
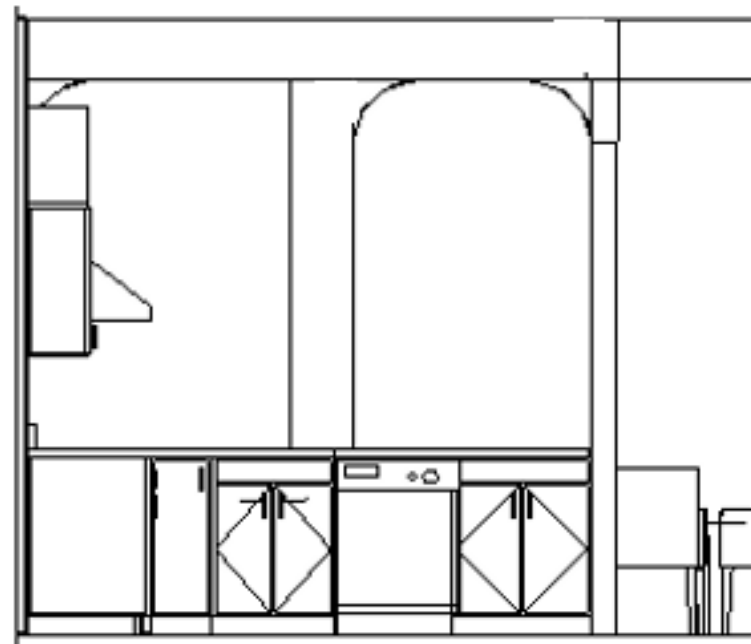
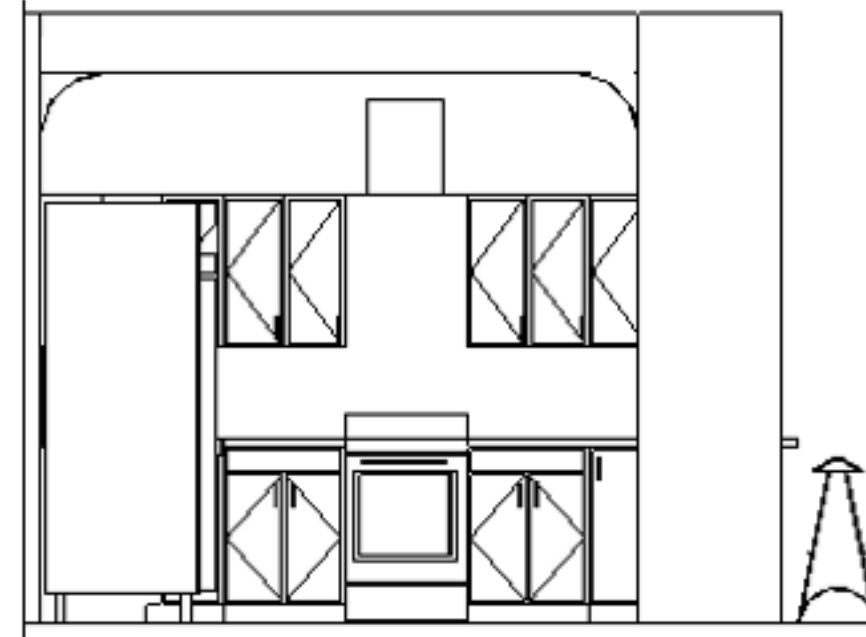
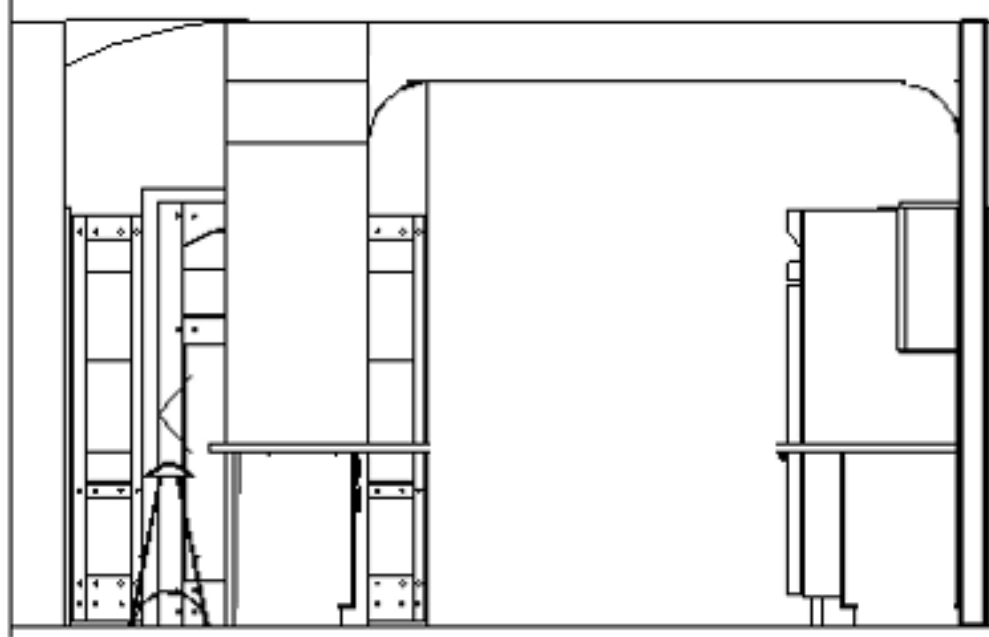
FLOOR PLAN: NOT TO SCALE





LIVING/DINING ROOM SECTION VIEW:

NOT TO SCALE



KITCHEN SECTION VIEW: NOT TO SCALE