



Steelcase



## here's the issue:

More than one-third of workers in 17 of the world's most important economies are disengaged.

Disengaged team members  
have slow project completion rates  
cost companies money  
drain company resources  
misrepresent company values and goals.

Some important questions to consider are: can the office be used as a strategic lever to impact engagement? And what kinds of changes can be made to the work environment to make the biggest impact?

employees seek:

**flexibility** in the workplace  
equipped with technology that  
adapts to each individual person

refuge from distraction to foster  
**creativity**, concentration, and  
rejuvenation

a strong, authentic workplace  
culture curated by informal  
communication and **collaboration**



## next moves to downtown LA!

From Santa Monica to Los Angeles, California, Next takes advantage of the opportunity to re-locate and re-brand in the up-and-coming Southpark neighborhood on the southern boarder of downtown.

The area is experiencing renovation + repurposing of existing architecture into residential and small business use.

Next invites members of the neighborhood to utilize the space as a meeting place to plan events and discuss ways to better the community.

Next will offer workshops to help small-business owners re-define their own workspaces. This will encourage fresh talent to come to the area to live and work and in turn build a strong, unique culture.



## what makes next different?

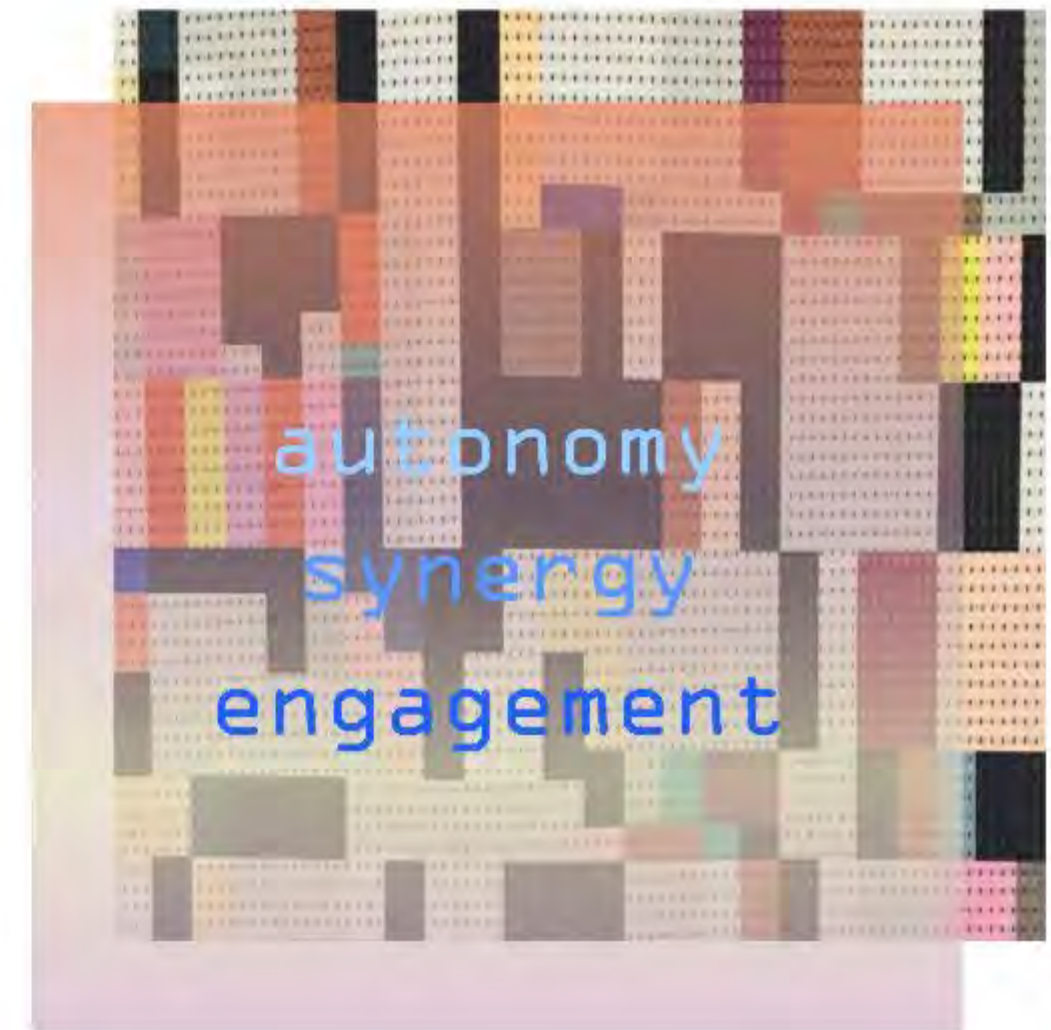
Being the *next* authority in design, next leads the charge through the “office renaissance”. The studio space must be a remarkable example of forward thinking and innovation.

Also consider: Today's generation of designers are inspired by both the evolution in function of the workplace as well as the measurable improvement on the user's wellbeing.

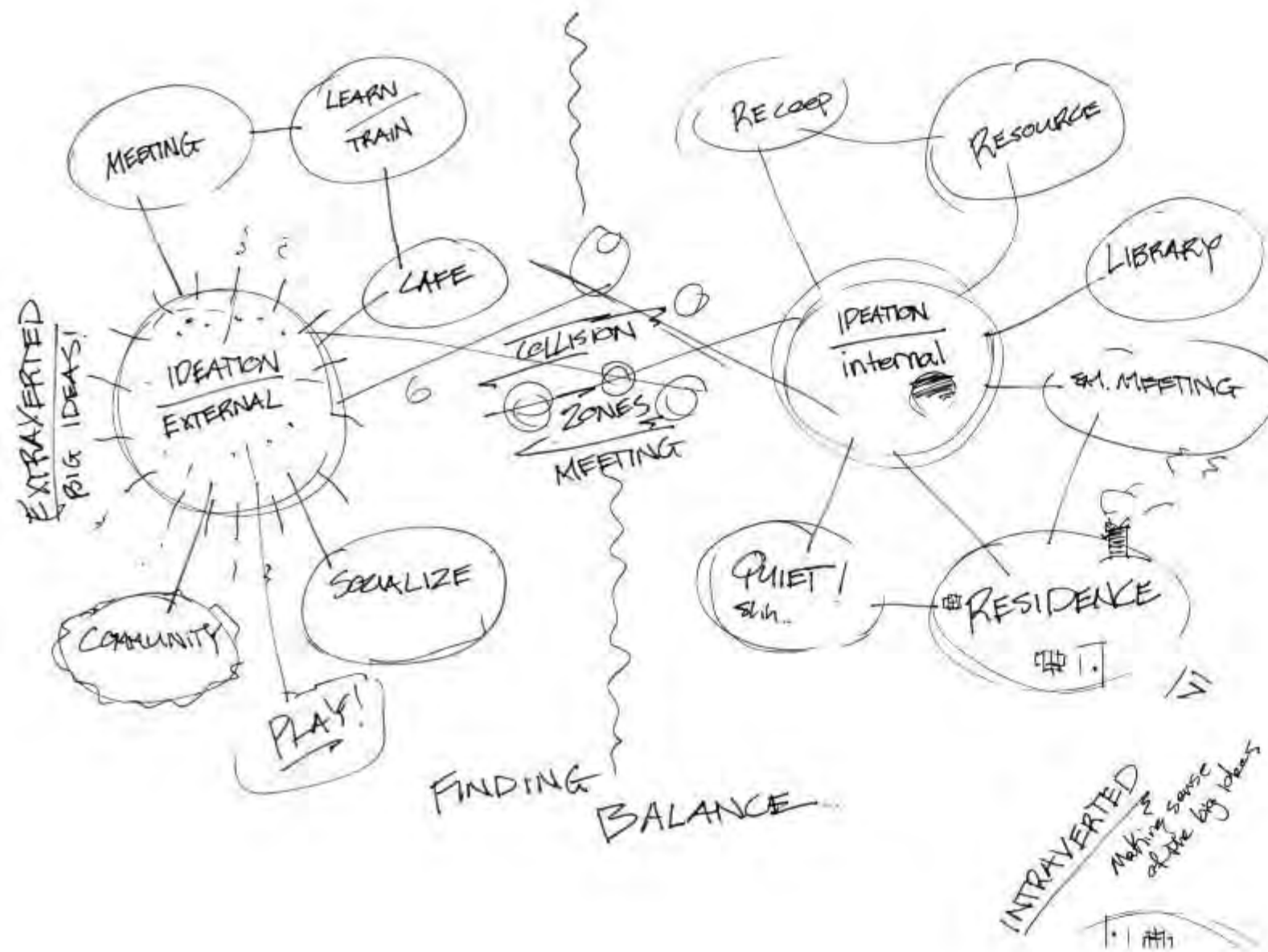
next is inspired by  
homeostasis:

the tendency of a system to maintain internal stability, owing to the coordinated response of its parts to any situation or stimulus that would tend to disturb its normal condition or function.

*The next step in office design is to build a “living / breathing” space that adapts and adjusts according to each user of each space. Individual spaces communicate to one another just as the members of the work community do.*



## a study of space "personalities":



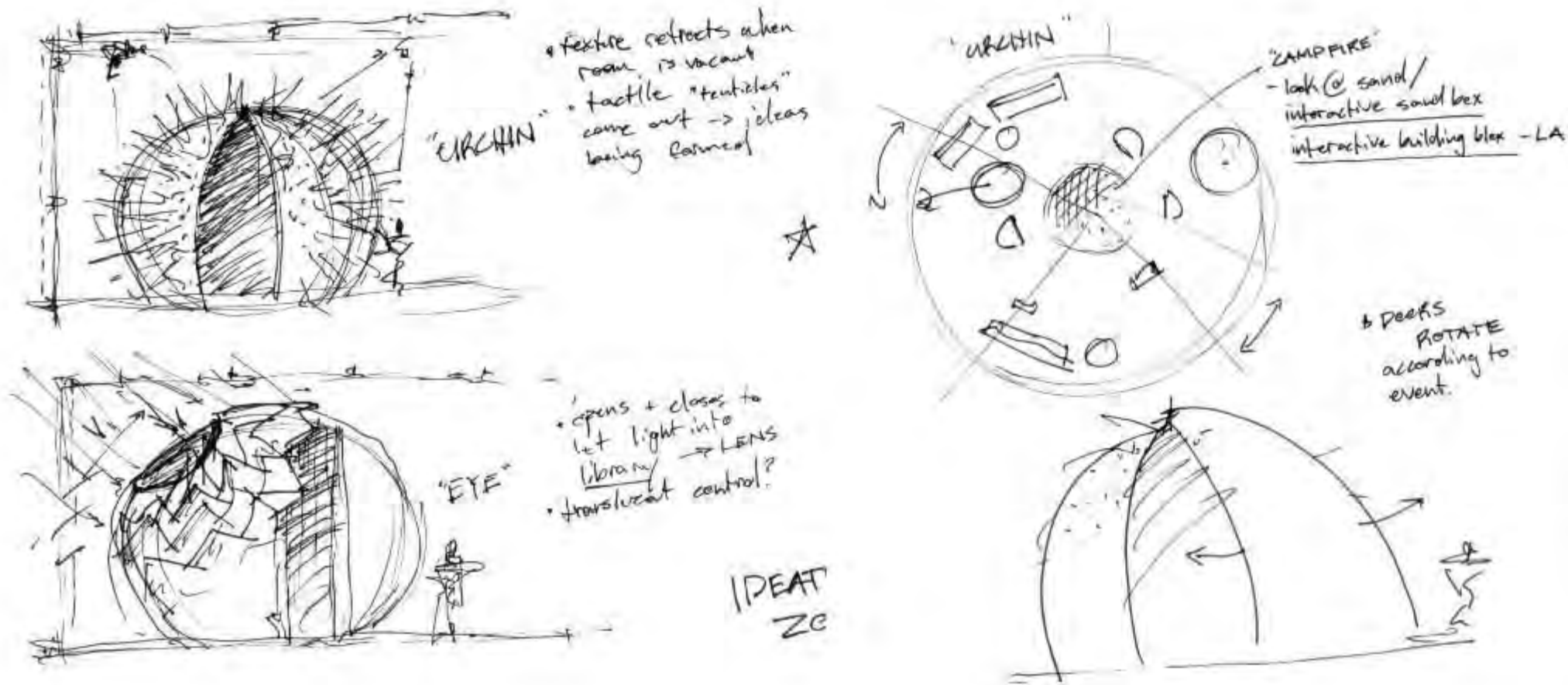
Planning nextStudio involves separating two centrally located ideation zones, each having a personality of their own.

The one on the left is extraverted, it features breakthrough-idea equipped spaces for loud expression and experimenting.

The one on the right is introverted. These spaces are for developing ideas within the team. Spaces for focus and rejuvenation are evenly mixed throughout as well as supplies and resources.

The ebb and flow between these two ideas fosters a workplace culture that is diverse and energized.

## more ways to illustrate concept:



The ideation zones are inspired by organic forms.

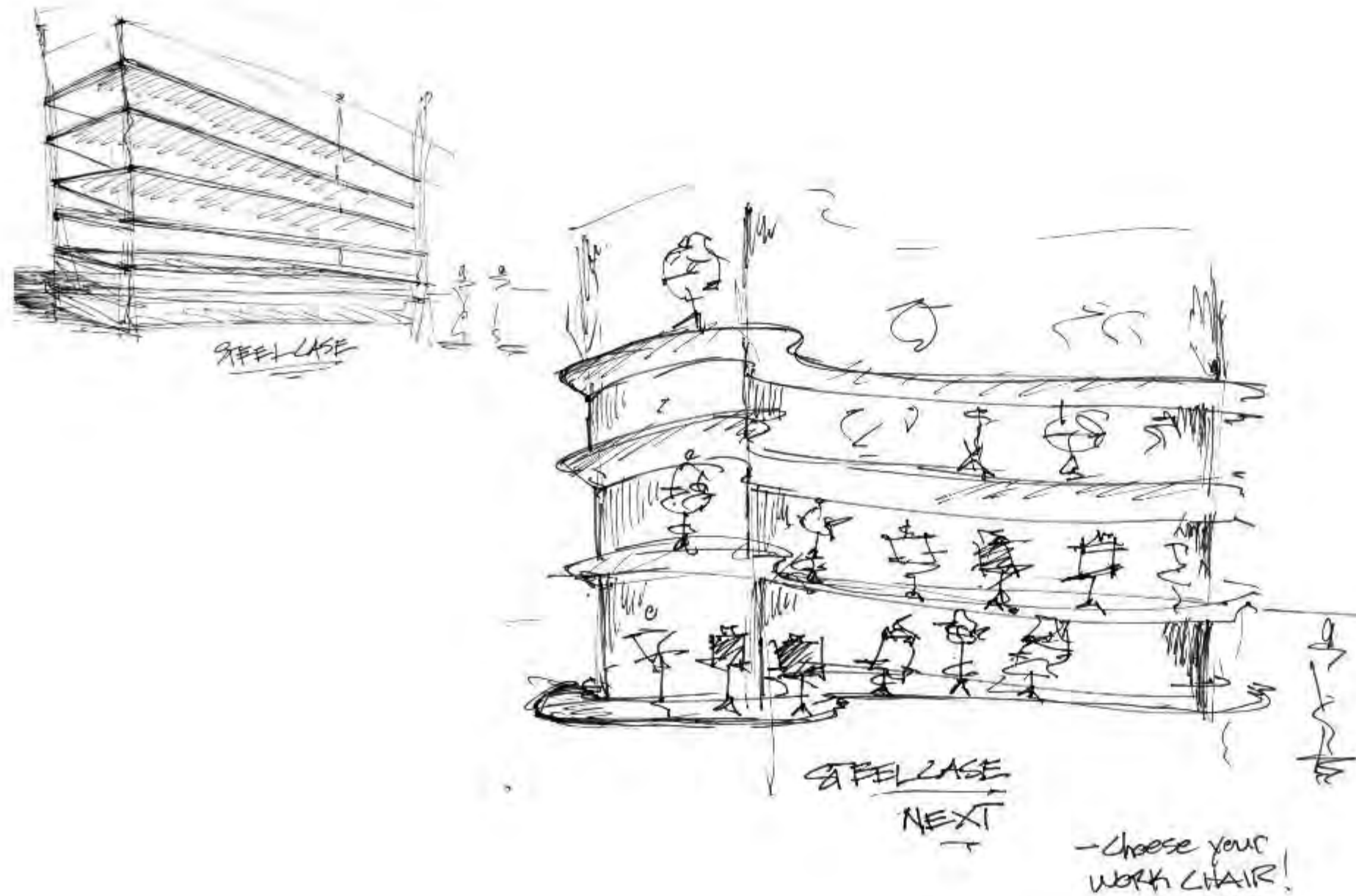
The "urchin" houses an informal arrangement of furniture to inspire casual conversation. the custom, magnetic marker-board-coated steel shell will be constructed by Polyform.

The urchin serves as host to project pin-ups, idea sessions, community event notices and personal messages.

The form on the opposing side of the plan is the "eye". This ideation zone houses the necessary equipment for the team members to perfect their work, i.e. finish library, resource center, maker space.

Like the lens in an eye, this zone will feature automated and manual lighting control to suite the individual needs of each user.

more ways to illustrate concept:



The privacy crisis is centered around the idea that people are not given enough choices in how they work. In addition to the space being fully equipped with private retreats to suite any workstyle, next will offer physical furniture options for employees to choose from to use at their workstation.

*"the ability to change office furniture per person was more likely to boost satisfaction within the workplace."*

## color rationale:



The color palette represents the homeostatic nature of the space.

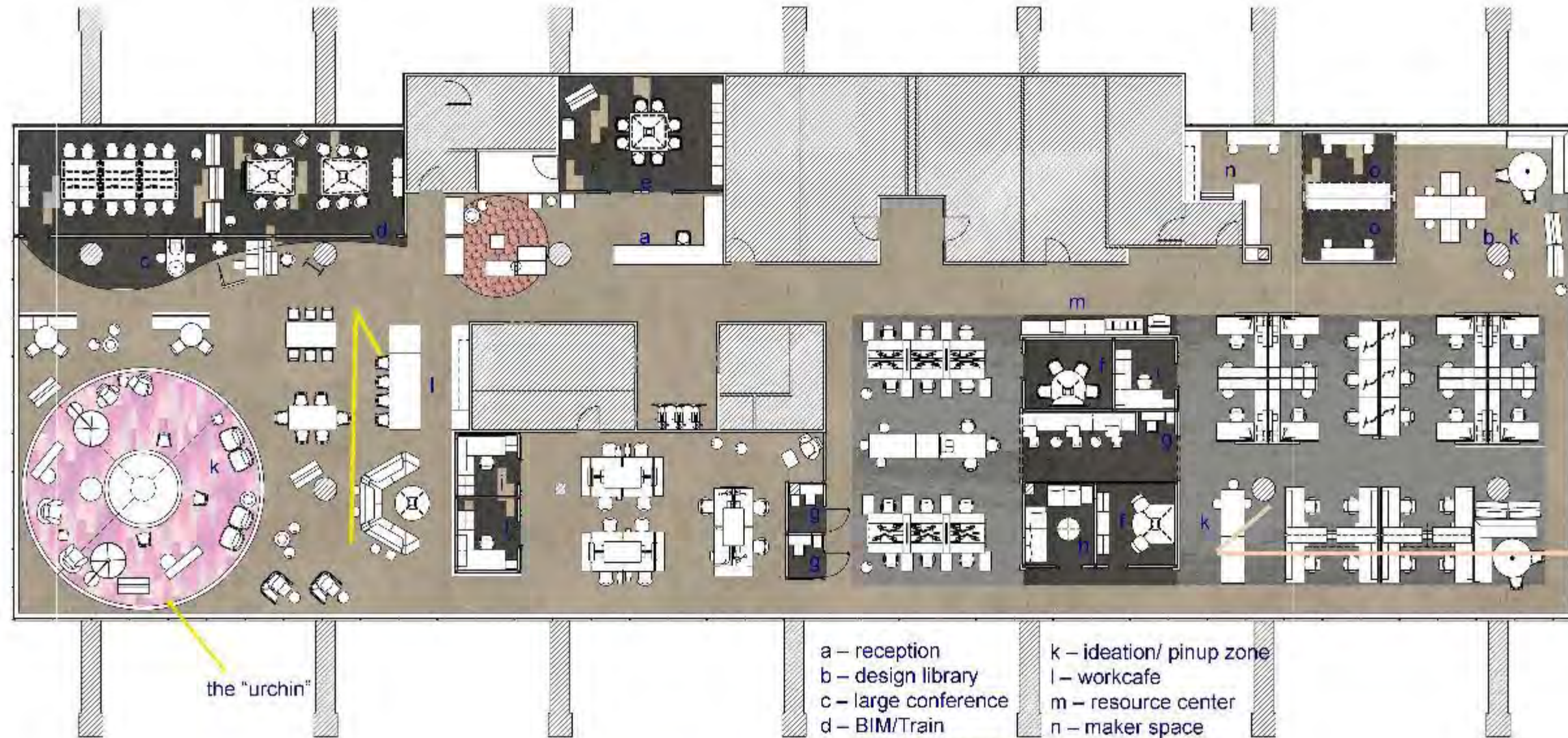
Sulfur yellow represents the electric energy of the collaborative zones.

Rose quartz pink represents the focused, heads-down nature of the introverted side of the space.

Cobalt blue accents represent the clear brilliance of the ideas that come from the two sides interacting with one another.



here's the plan:



the "urchin"

- elevation b - open office
- elevation a - workcafe
- not in scope

- a - reception
- b - design library
- c - large conference
- d - BIM/Train
- e - med. Conference
- f - small conference
- g - phone rooms
- h - mothers/ relaxing
- i - private office
- j - open plan office
- k - ideation/ pinup zone
- l - workcafe
- m - resource center
- n - maker space
- o - project rooms

scale: 1/16"=1'-0"



finishes + furniture: workcafe



Coalesse work lounge



less than five chair



bouye



Coalesse CH collection



BuzziShade



Tarkett lvt



Maharam rug



Polished concrete



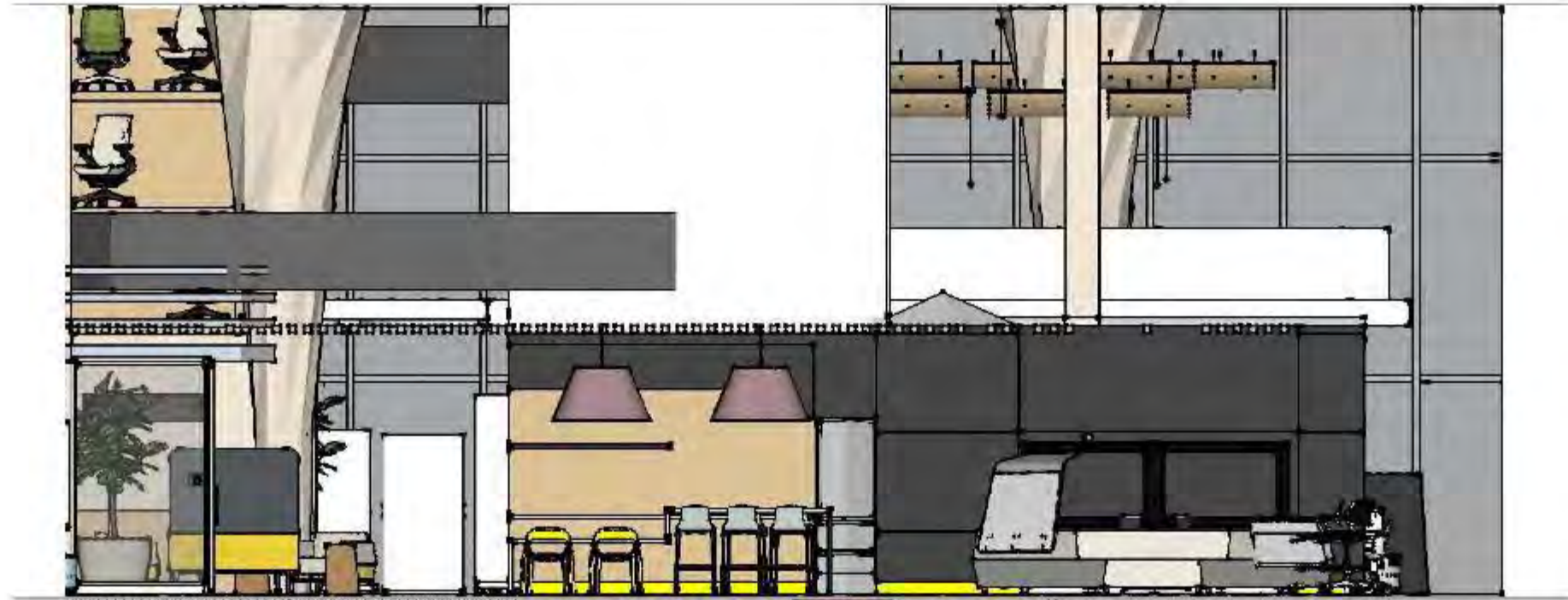
Designtex



Designtex wallcovering

Steelcase desert oak

elevation: workcafe



## finishes + furniture: open office



The open office is the central nervous system of the design firm. Each person requires a different space per task being preformed.



Designers need the most storage for materials, plan layouts and informal "collision" meetings.



Project managers need less room for materials and more room for file storage.



There are also satellite, unassigned stations that have minimal storage. These provide short-term residence for interns and remote employees.

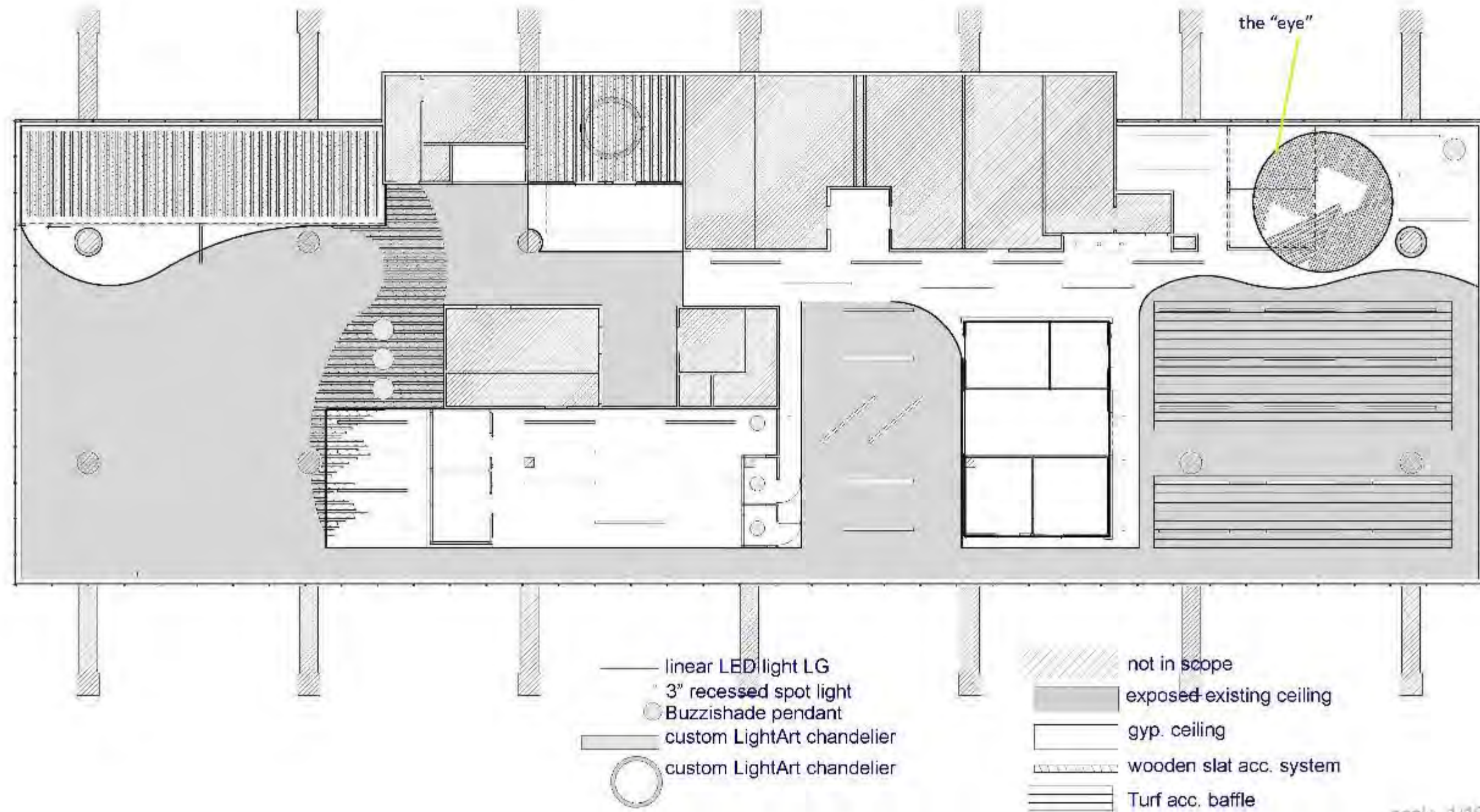
All permanent residence workstations are outfitted to be mechanically or electronically height adjustable to enable posture changes throughout the day.



elevation: open office



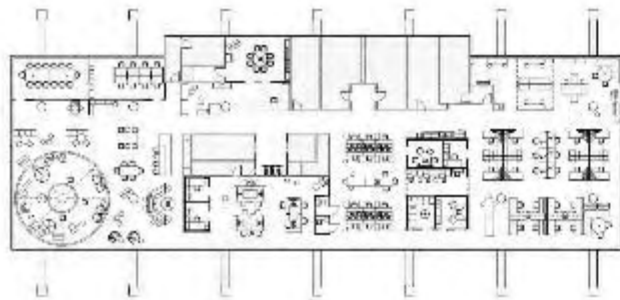
here's the plan: rcp



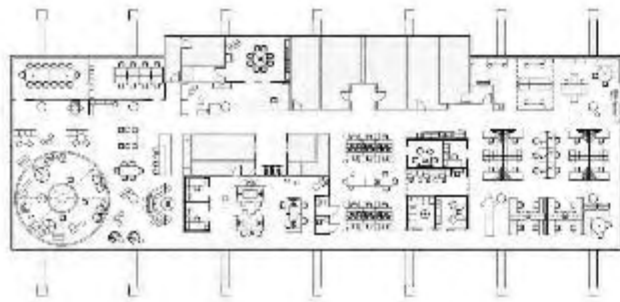
scale 1/16"=1'-0"



perspective views: workcafe

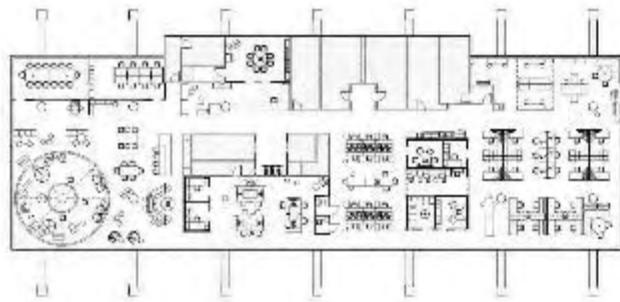


perspective views: workcafe

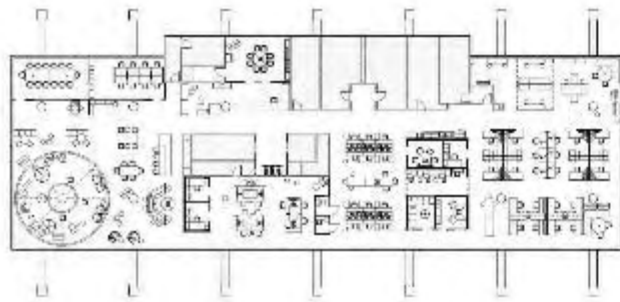




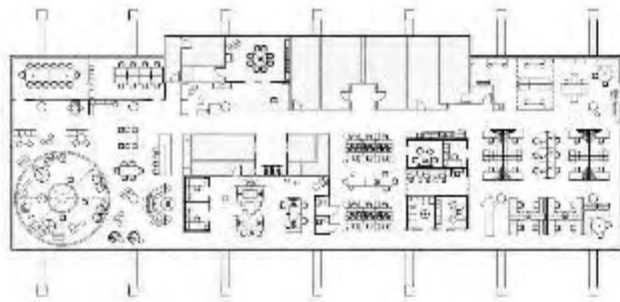
perspective views: inside "the urchin"



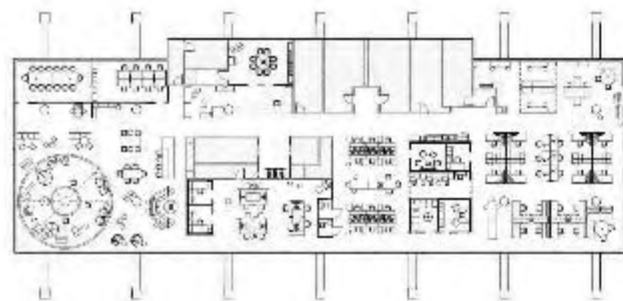
perspective views: main corridor



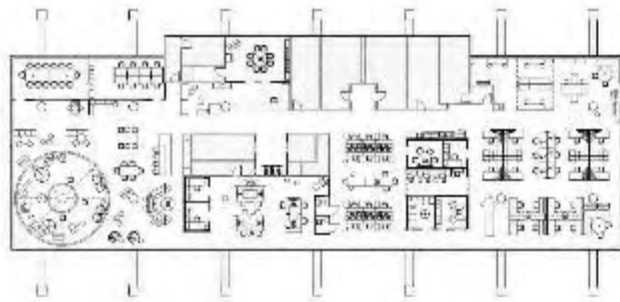
perspective views: open office -  
central plan



perspective views: open office -  
plan south



perspective views: design library -  
"the eye"





Steelcase

thank you!