

The background features a repeating Art Deco pattern in shades of blue and gold. The pattern consists of stylized human figures and geometric shapes. A large, semi-transparent white rectangle is centered on the page, containing the text. The entire page is framed by a thin black border.

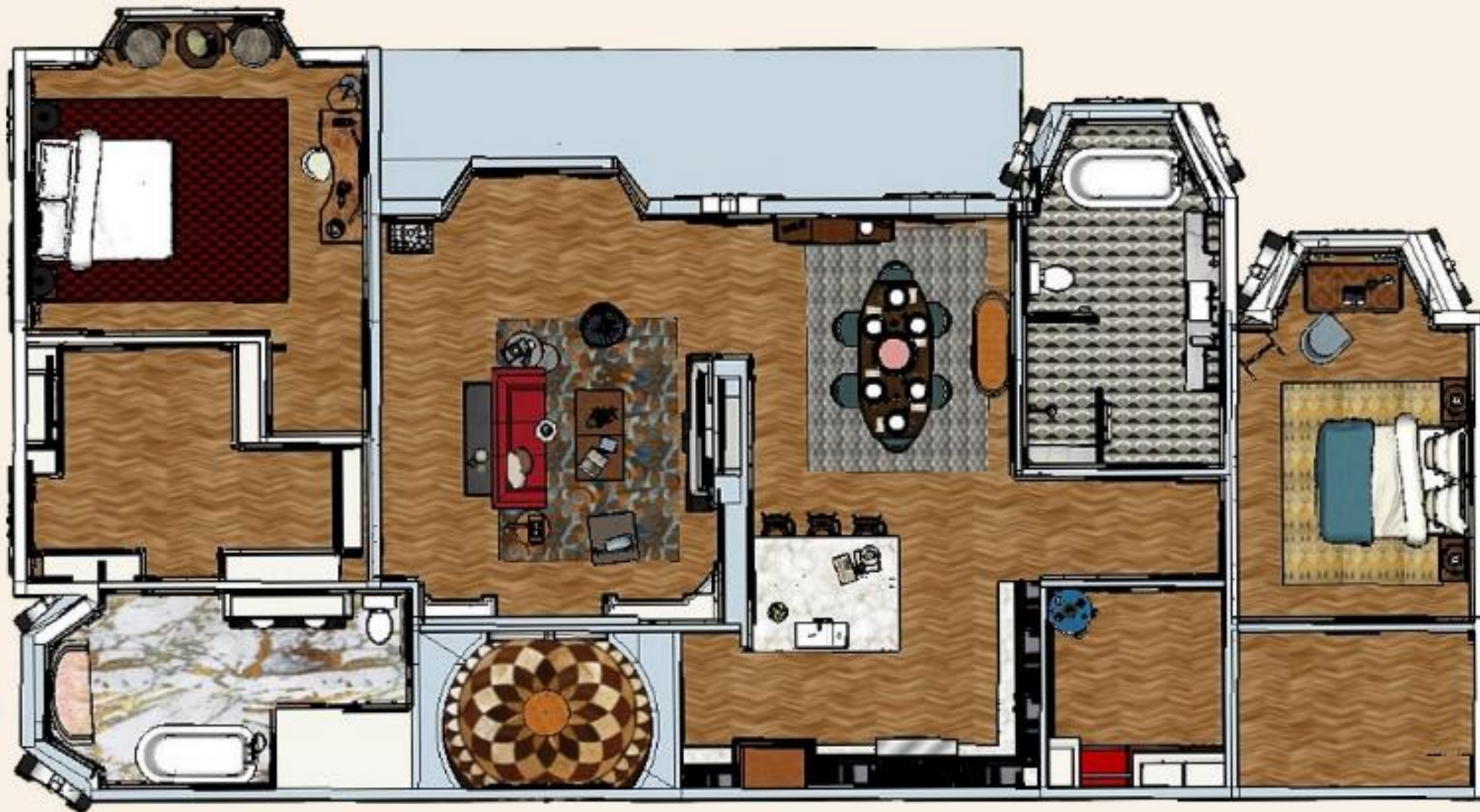
PORTFOLIO 3

IDSN 4500

Assignments 7-12

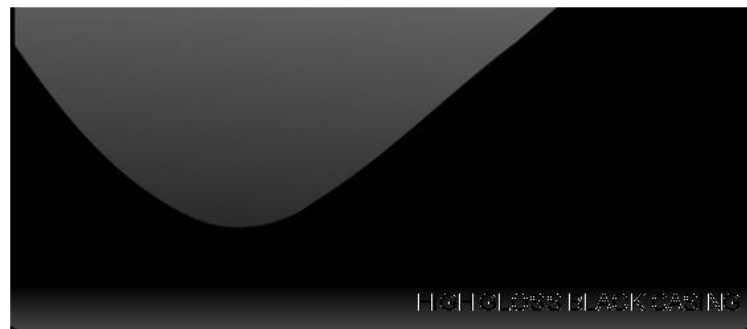
Fall 2016

Rendered Floor Plan



Finish Options

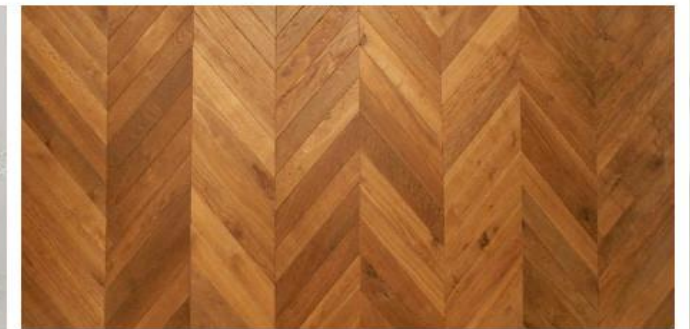
Living Room



HIGH GLOSS BLACK

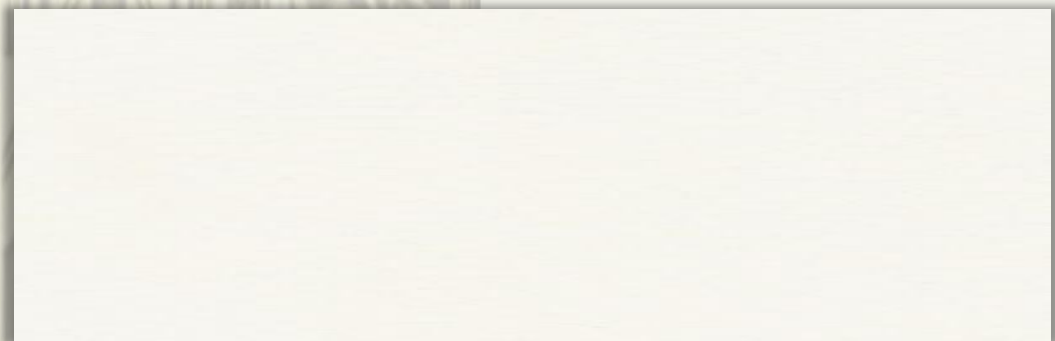


EGG SHELL WALLS



Furniture & Finishes

Living Room





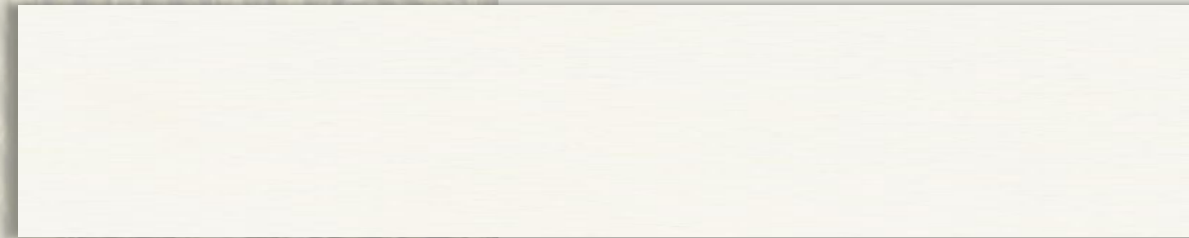
Living Room

Finish Options Kitchen



Furniture & Finishes

Kitchen





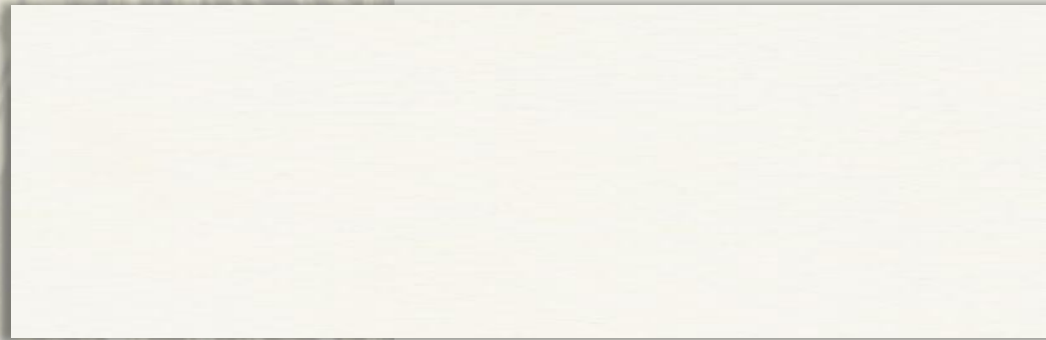
Kitchen

Finish Options *Bathroom*



Furniture & Finishes

Master Bath

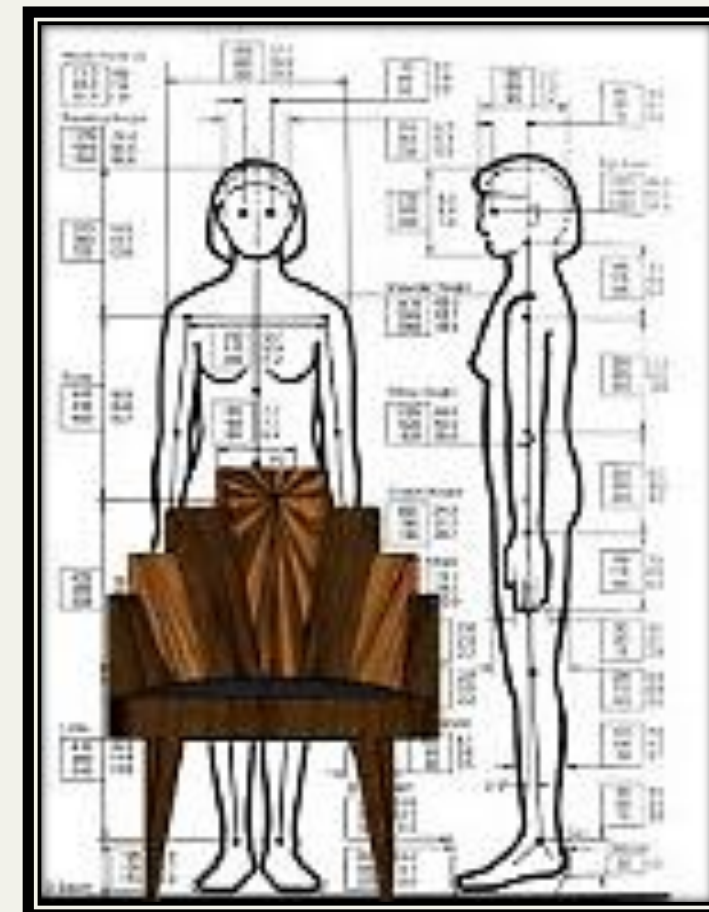
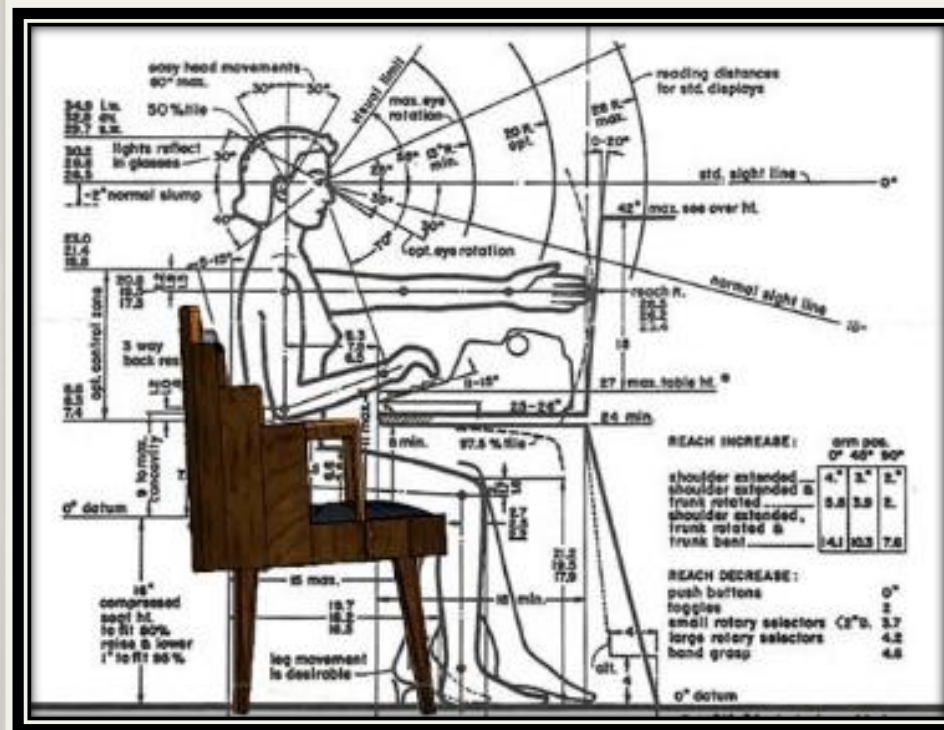




Master Bath

Anthropometric Design

Chair Design



Historical Precedents

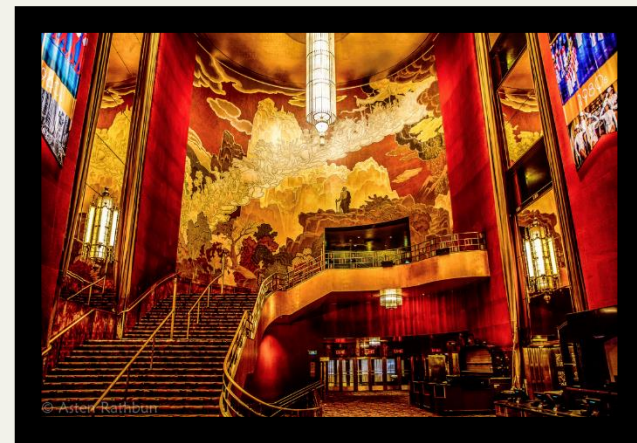
French Art Deco

Also known as "Art Moderne", "Modernistic", & "Jazz Pattern." Art Deco first originated in France before the start of WWI. The roots of French Art Deco are to be found in the *ancien régime* – the political and social system of France before the revolution of 1789 – and its time honored traditions of apprenticeship and guild training. It is devoted to showcasing art and craftsmanship.

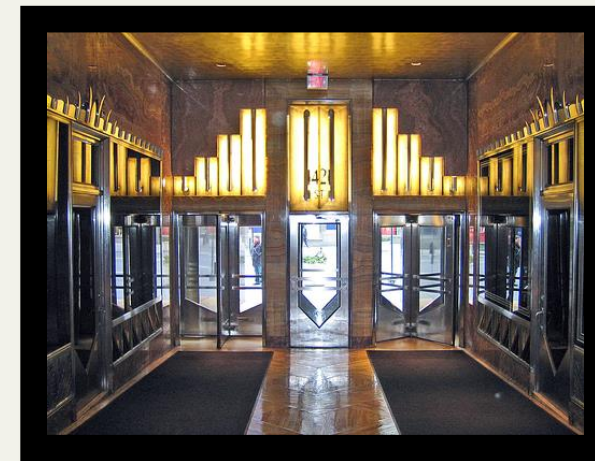
Art Deco is influenced by multiple styles like Cubism and Fauvism. It pulls from exotic styles from China, Persia, Egypt, etc.

Characteristics:

- Geometric Lines
- Wood Inlay
- Symmetry
- Vibrant Colors
- Mother of Pearl, Ivory, Sharkskin
- Chrome-plated Steel, Aluminum, Bakelite



Radio City Music Hall



The Chrysler Building



Designing with Human Behavior

Over 55:

- Sight, hearing, mobility and balance are declining.
- Isolation is very common amongst seniors so communication and Interaction is crucial
- The Baby Boomer community tend to have fewer children than their parent's generation
- Due to decline in mobility, seniors may need extra space to store devices such as wheelchairs or walkers
- As we're aging, physical health decreases, so comfort is of the utmost importance. Furniture needs to be comfortable and easy to get out of
- We shrink as we age so it's important to keep shelves and cabinets easy to access.

