
IDSN 4500

UNIVERSAL DESIGN

PORTOLIO 3

ASHLEY SOWA

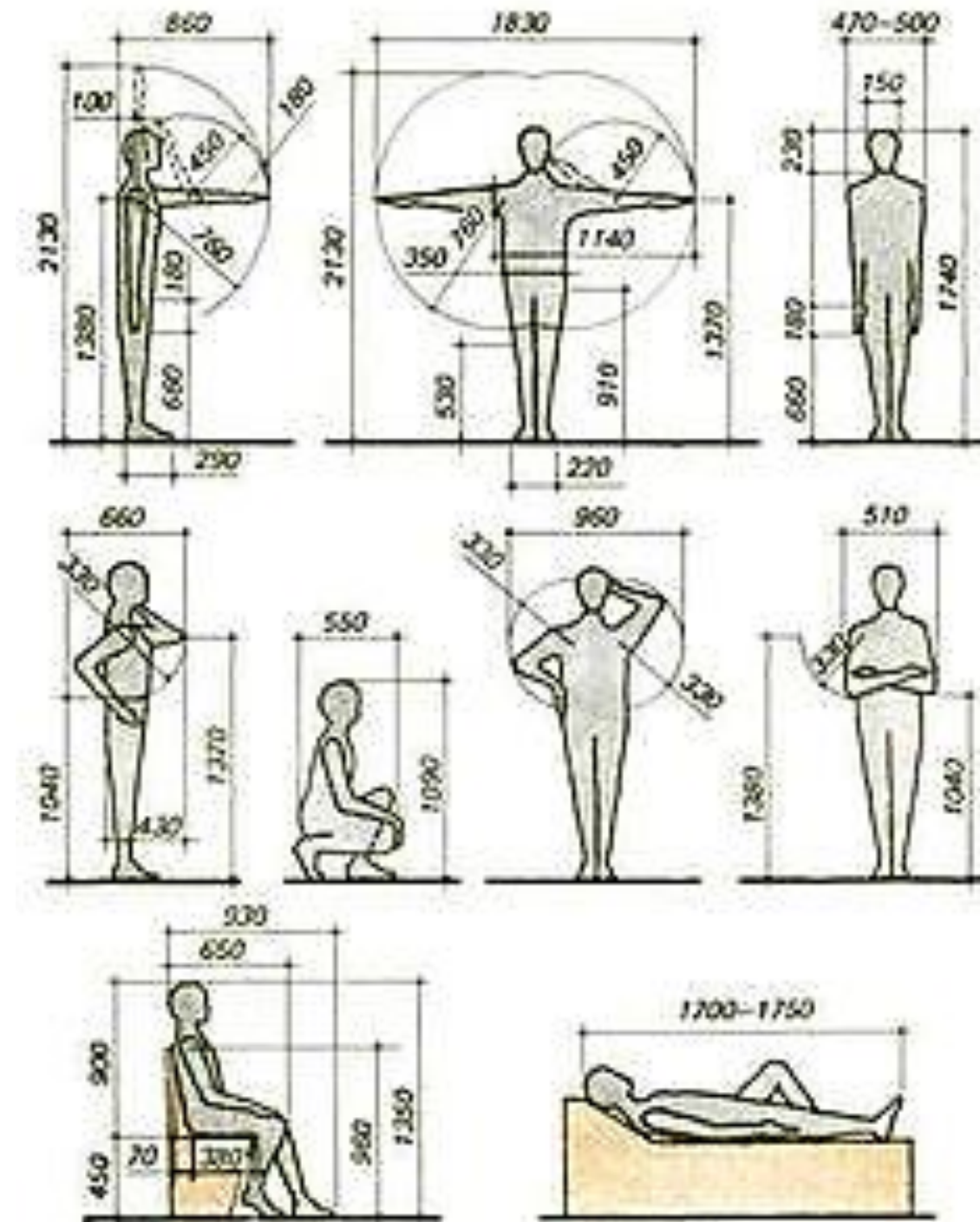
HISTORICAL PRECEDENTS

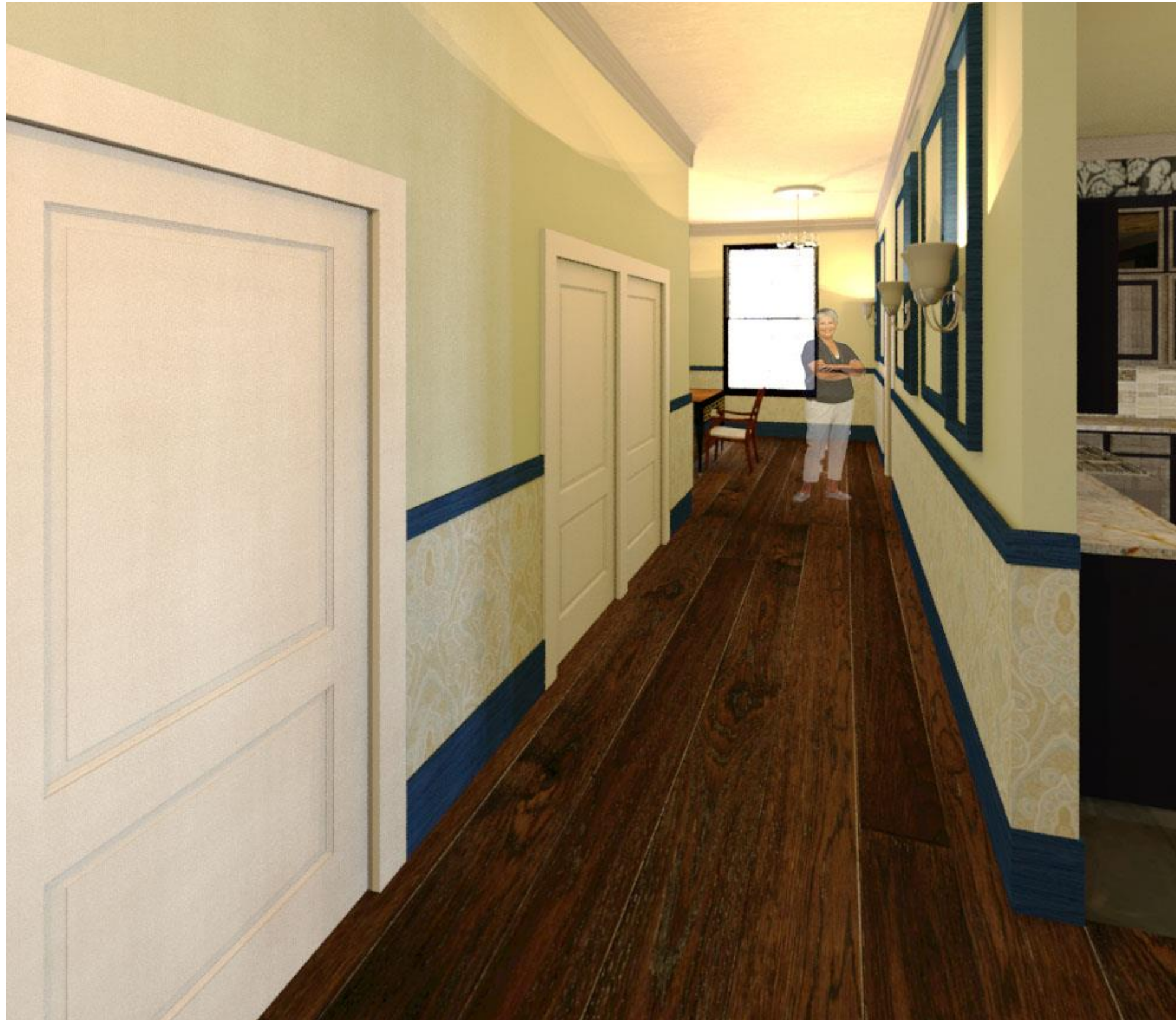
- ❖ “Imitation Of The Antique” referred to the Directoire simplified classical style, also references this design’s approach to incorporating historical precedent
- ❖ Post- French Revolution Directoire Style Influenced the;
 - Furniture Selection
 - Material Options
 - Color Palette
- ❖ Modern Twist With Large Scale Patterns



DESIGNING WITH HUMAN BEHAVIOR

- ❖ Separate Private/ Public Areas
- ❖ Direct Traffic Flow/ Visibility
- ❖ Major Source of Natural Light- Large windows in all public and private spaces.
- ❖ Strobe Alarming System- Provided for security purposes relating to hearing impairments.





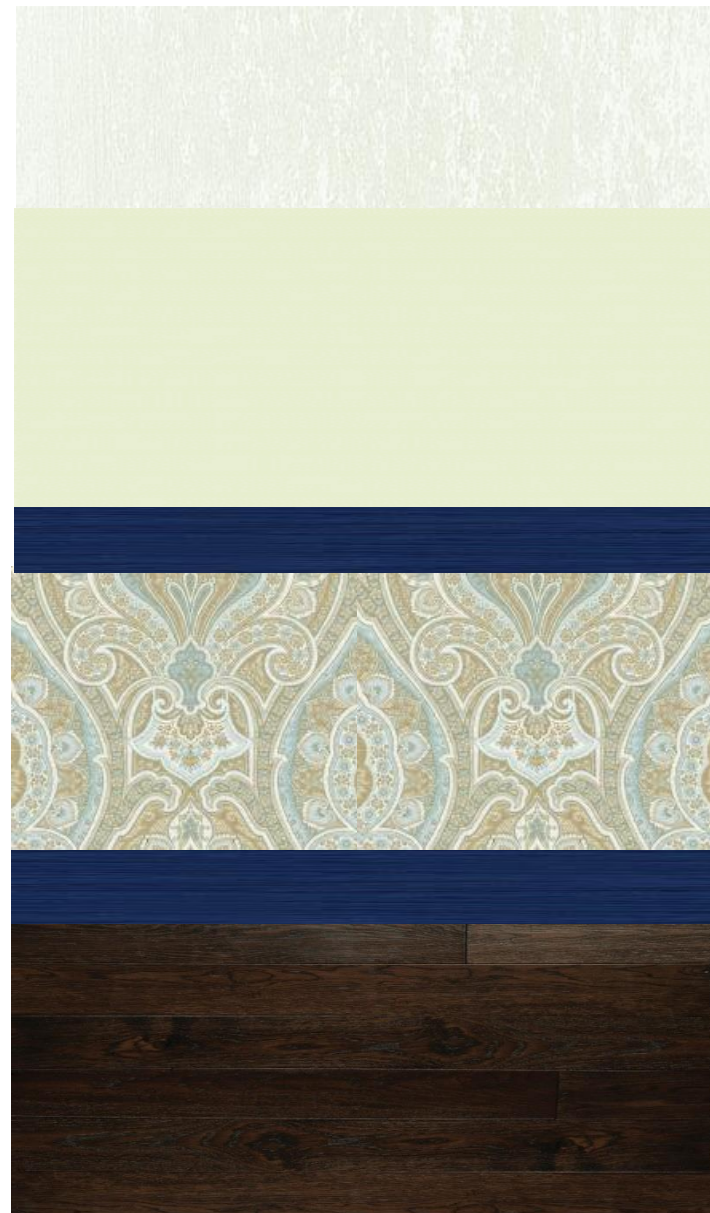
“Walking through the same threshold, yet with every new owner the interior is never the same.”

.....

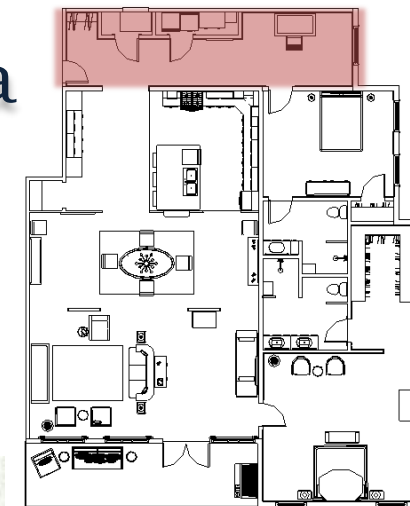
“If I combined the last three tenants’ styles that lived here, I’d be able to create a gosh-darn history book.”

FURNITURE AND FINISHES

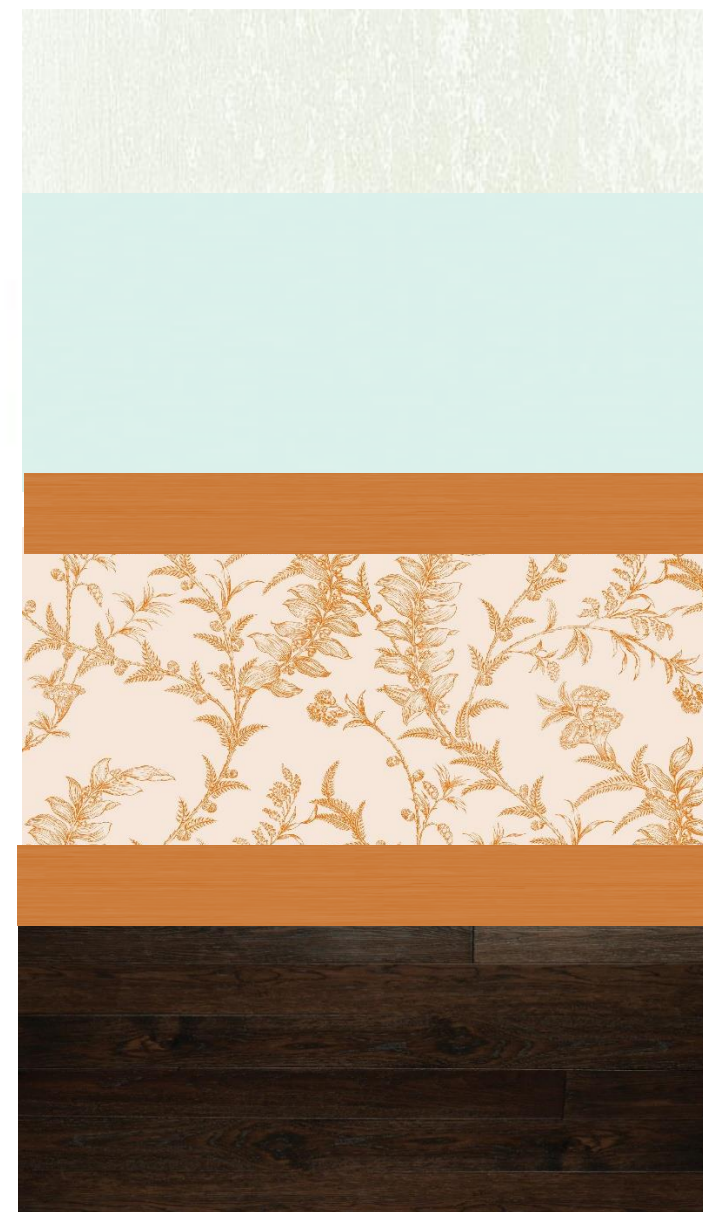
OPTION 1:



Entry/Bonus Area



OPTION 2:





“Looks as though the new owners have a high interest in the Post French Revolution era...how quaint.”

.....

“Given my way this place would have stayed the way I had designed it when I was alive and lived here.”



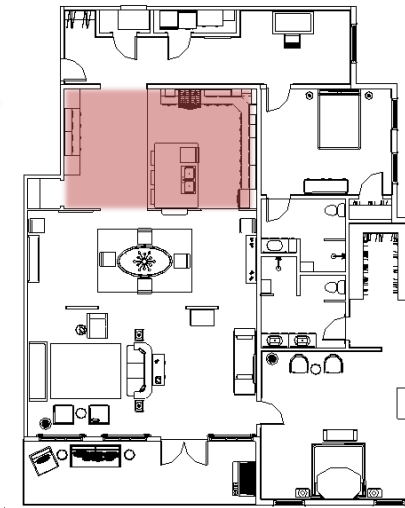
“Looks like their daughter is in town for the weekend, she better watch those monster heels on that new floor.”

.....

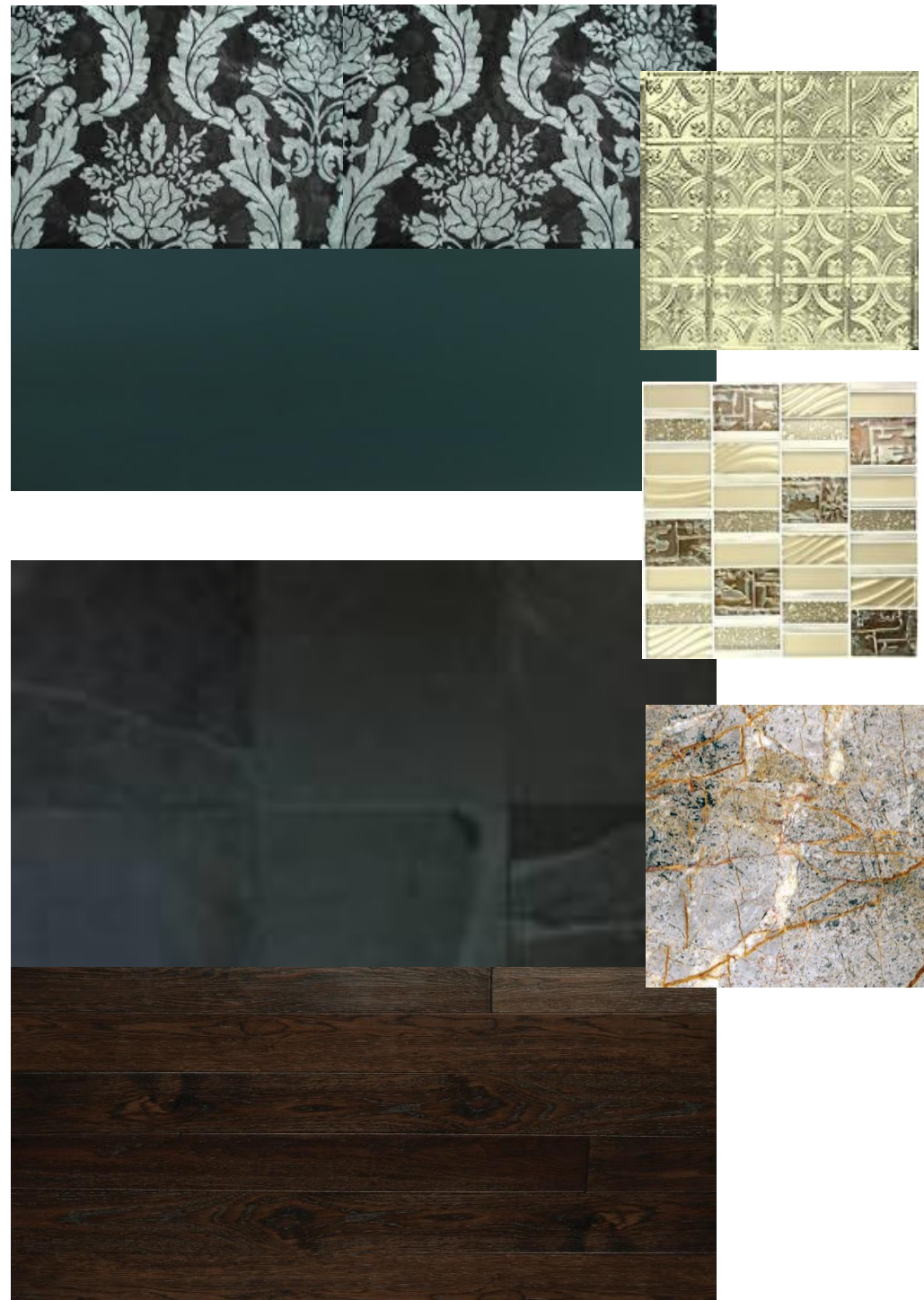
“I see they added a dividing wall in as well, much better decision than the last couple’s ‘plant wall’... bunch of hippies that bunch was.”

FURNITURE AND FINISHES

Kitchen



OPTION 1:



OPTION 2:

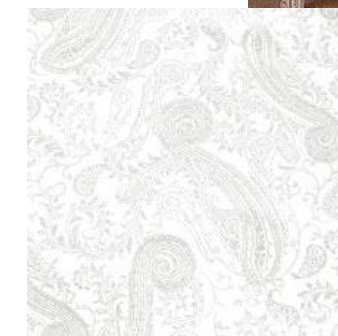
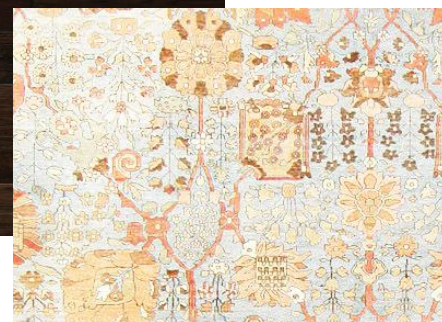
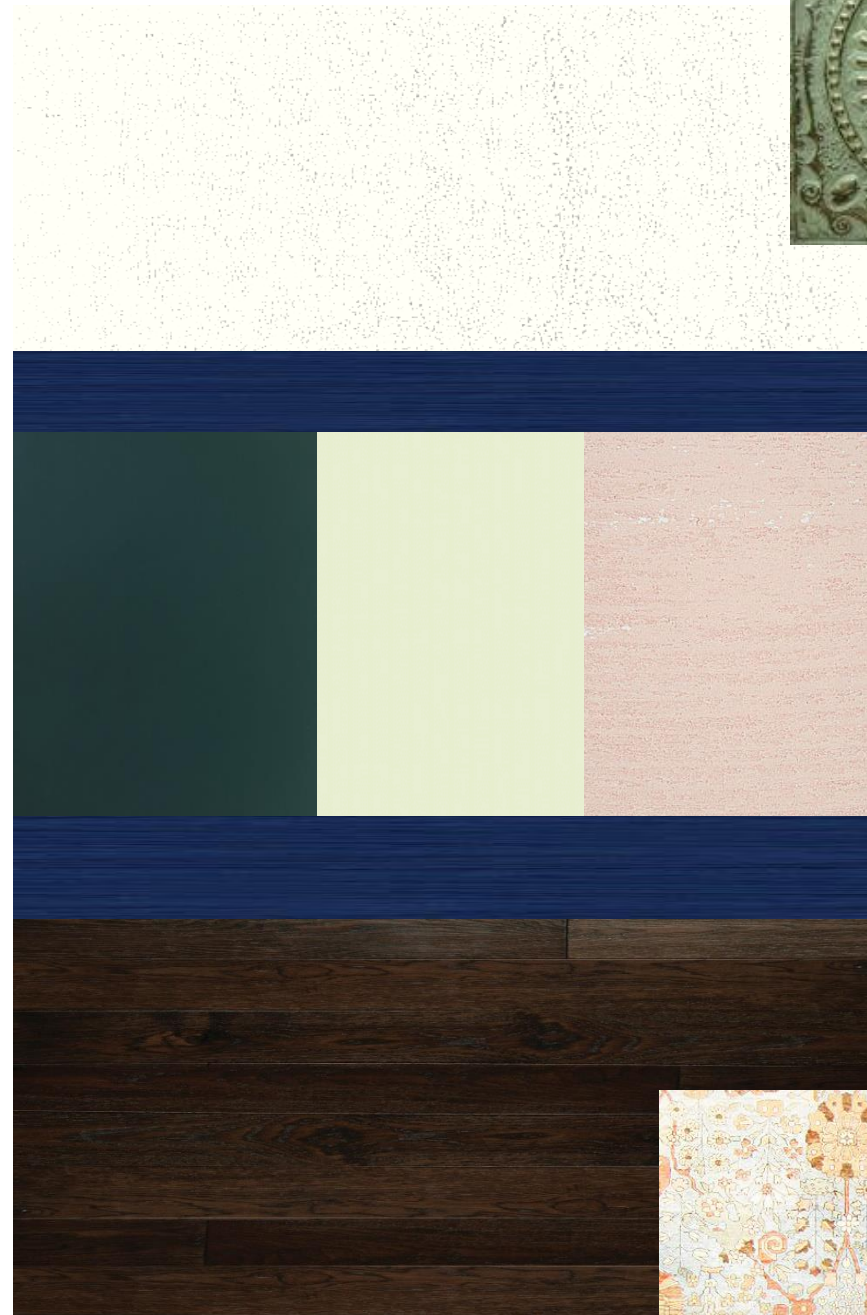
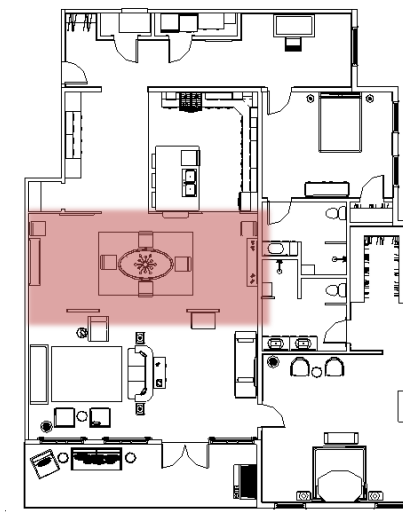




“Blue molding, how interesting, definitely not my taste but judging by Pat’s bland wardrobe she could use some color somewhere in her life.”

FURNITURE AND FINISHES

Dining Room



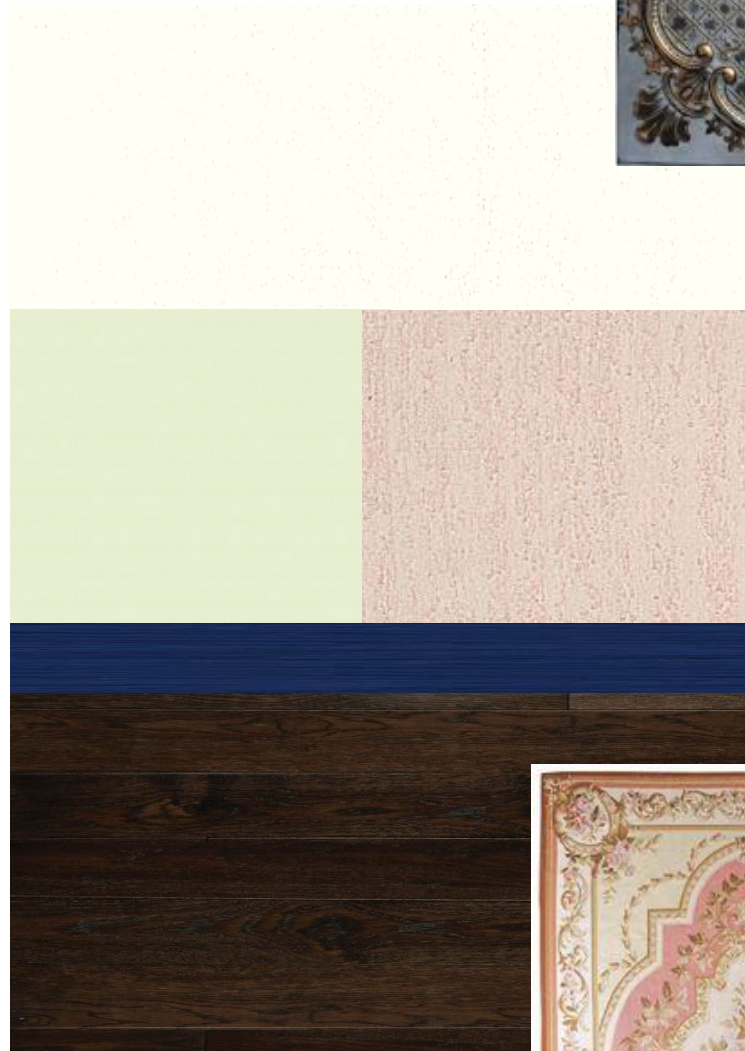
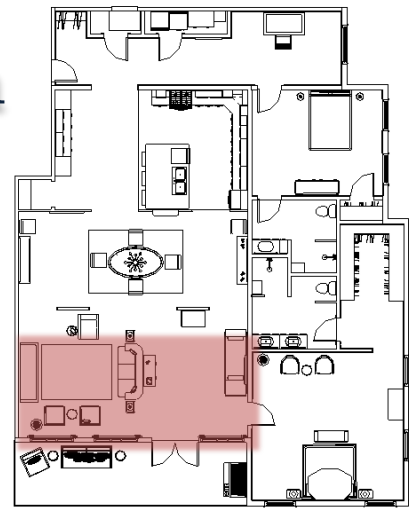


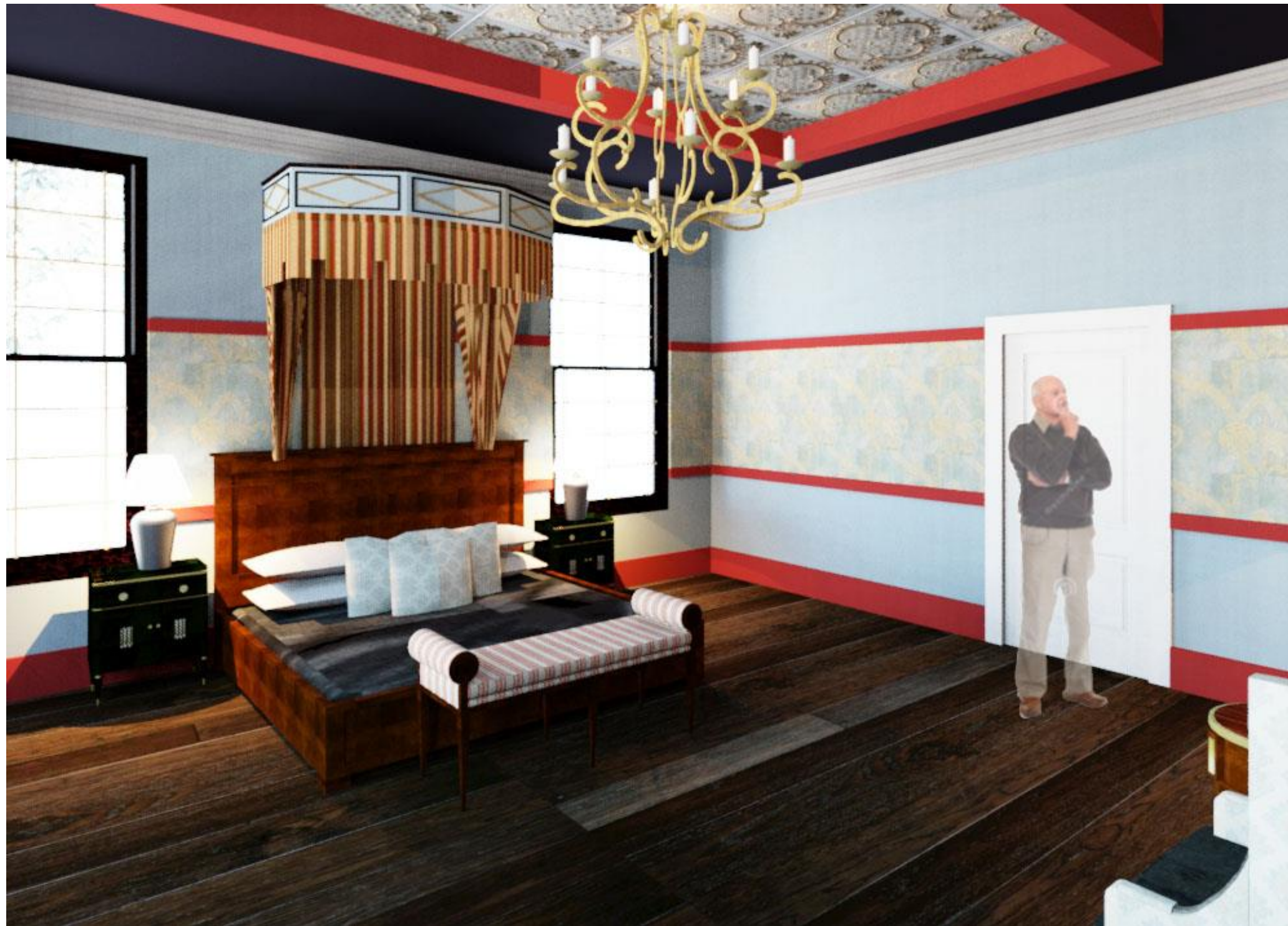
“Well talk about taste the rainbow- there is a tad too much color in this room for my taste, but hey, with these folks joining myself in the afterlife at some point they might as well go crazy!”



FURNITURE AND FINISHES

Living Room



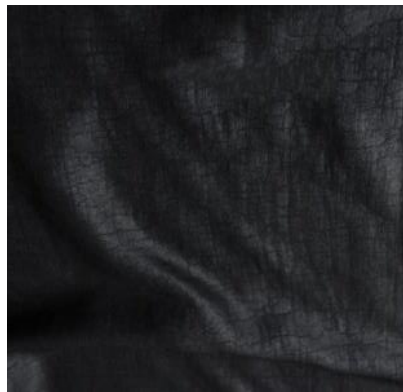


“I remember when I occupied this bedroom, we had gone for the bold look as well curtesy of my wife.”

“I’m sure she is around here somewhere... maybe admiring that rainbow of living room.”

FURNITURE AND FINISHES

Master Bedroom





“Well look who is back again, their daughter really can move quickly. I wonder if she took track at one point.”

.....

“Now this is a soothing atmosphere that I could spend some time in.”

FURNITURE AND FINISHES

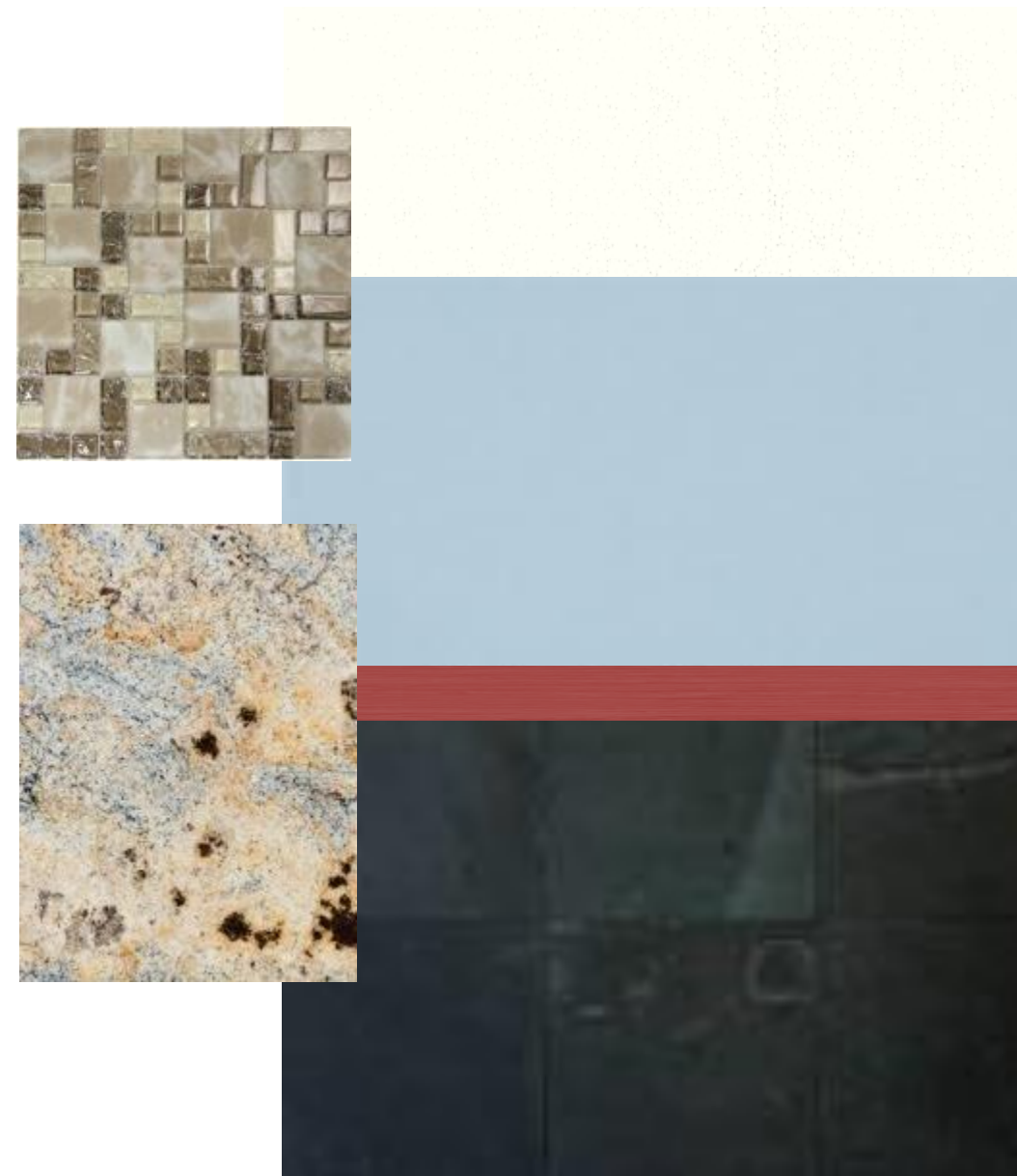
Master Bathroom

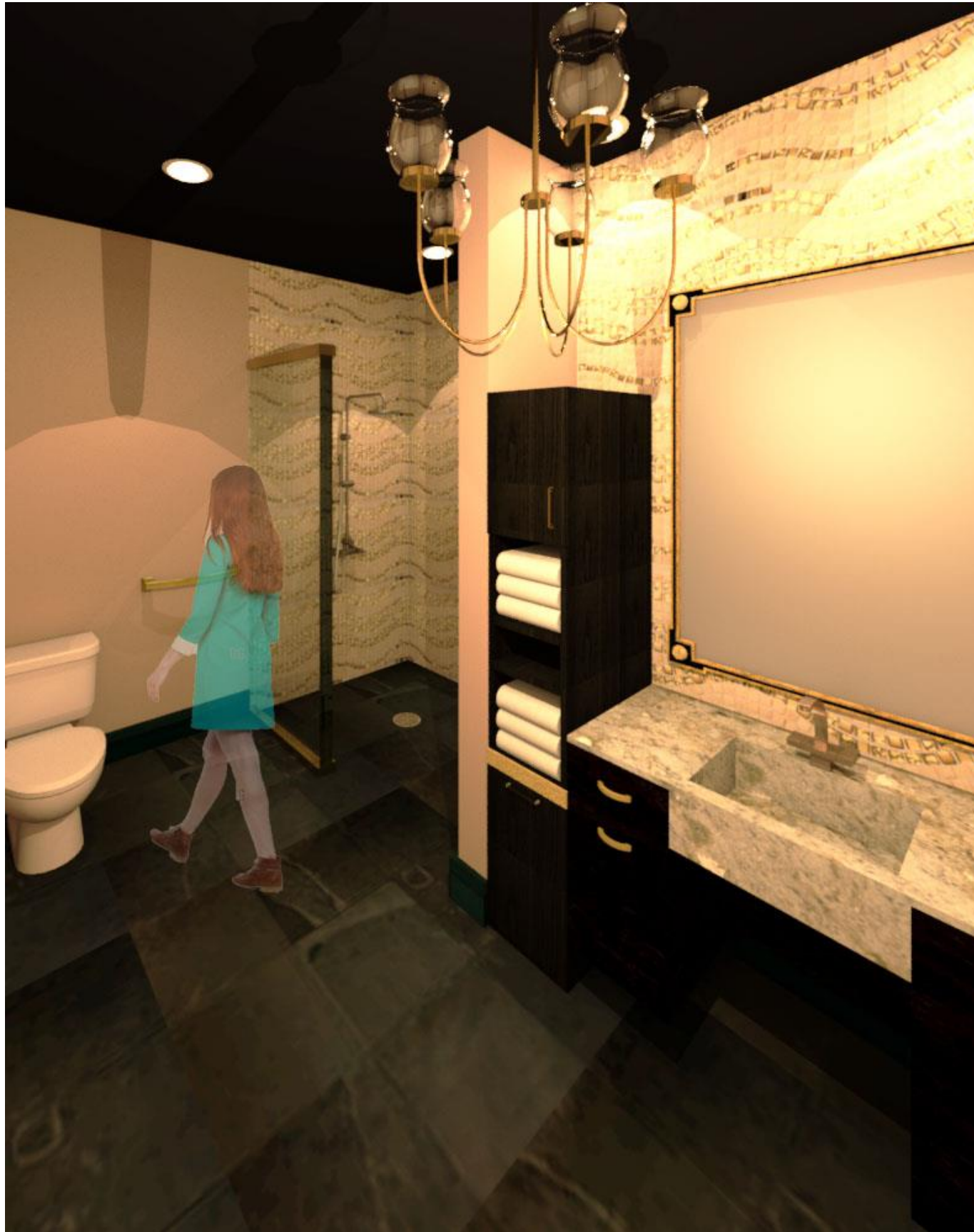


OPTION 1:



OPTION 2:





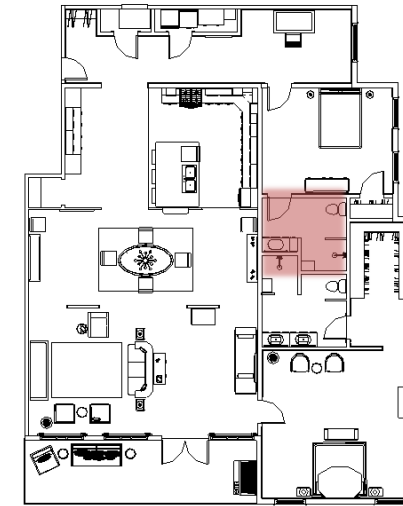
“Walking through walls has to be the best perk of being a ghost, I never realized how much time I wasted using the door.”

.....

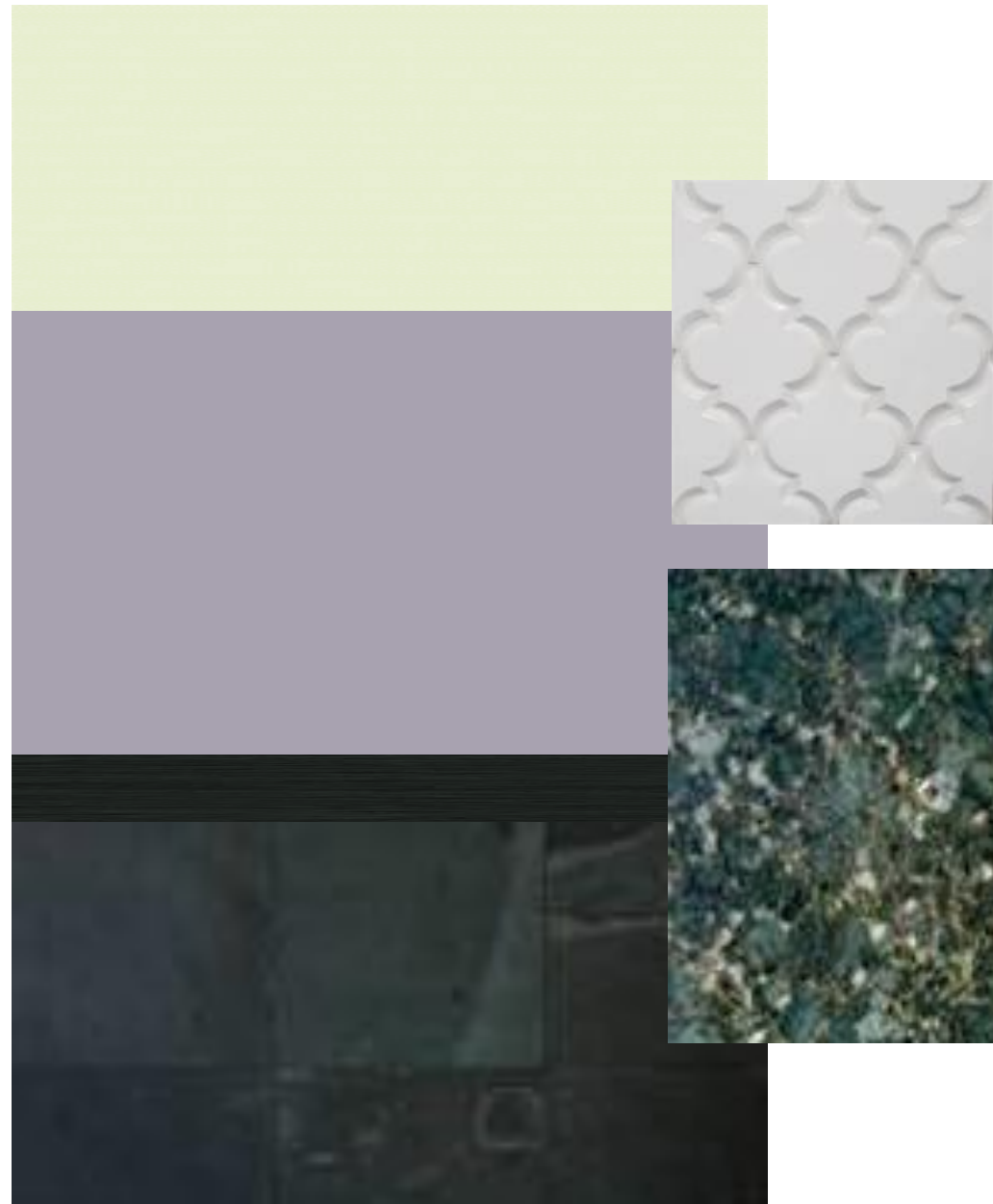
“Interesting style they chose for this room, I must say the dark ceilings are cozy.”

FURNITURE AND FINISHES

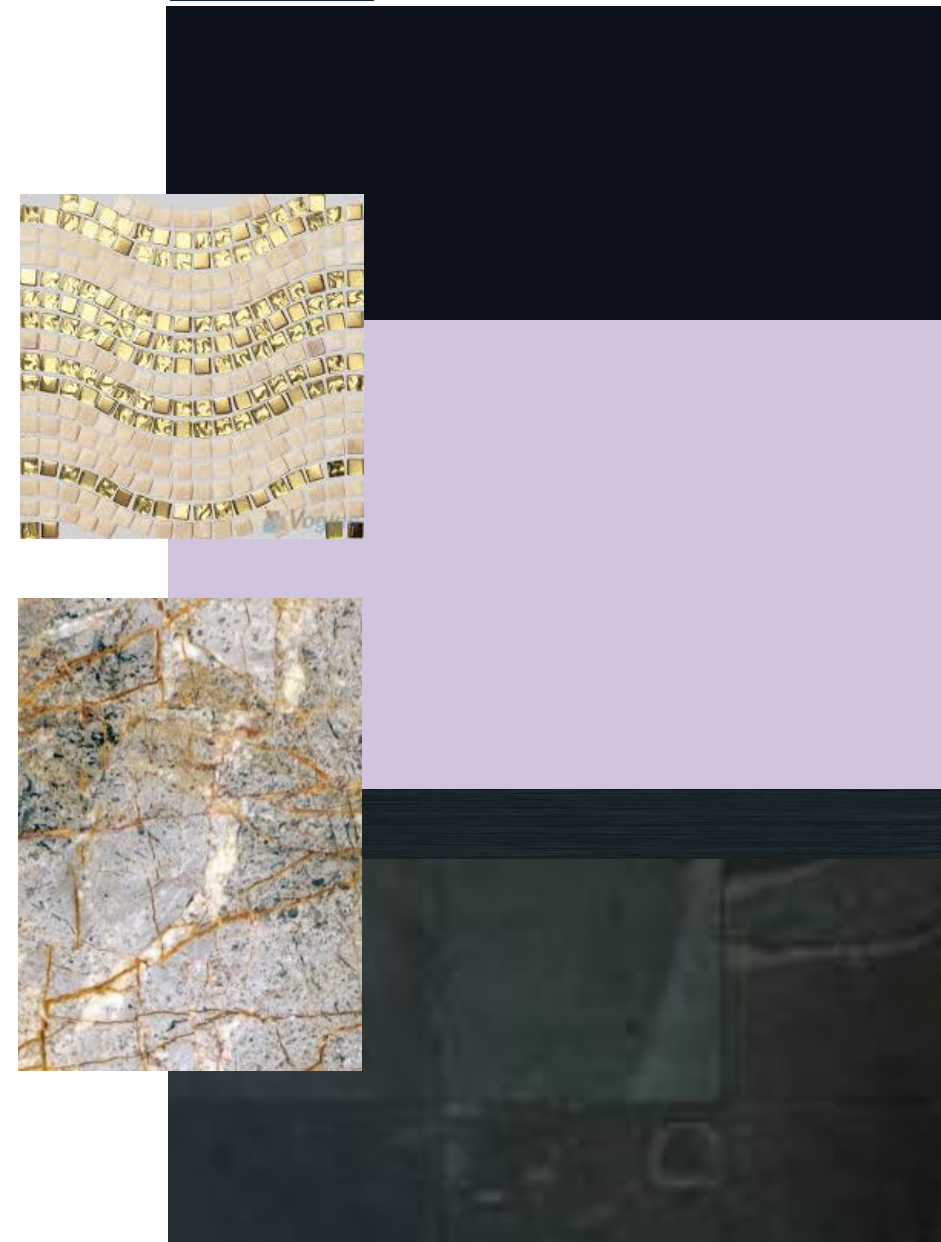
Guest Bathroom



OPTION 1:



OPTION 2:



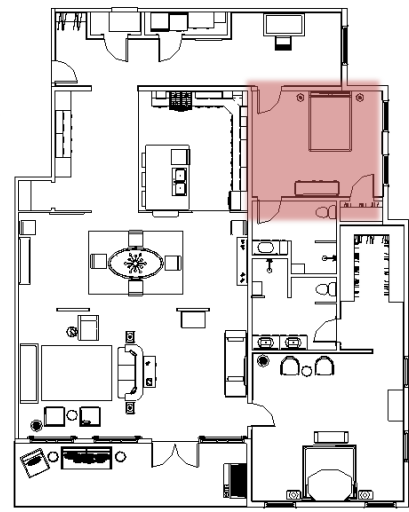


“Wow my vision is beginning to flutter! After looking at all that color they must be in shock to be seeing a room so neutral...”

.....

FURNITURE AND FINISHES

Guest Bedroom

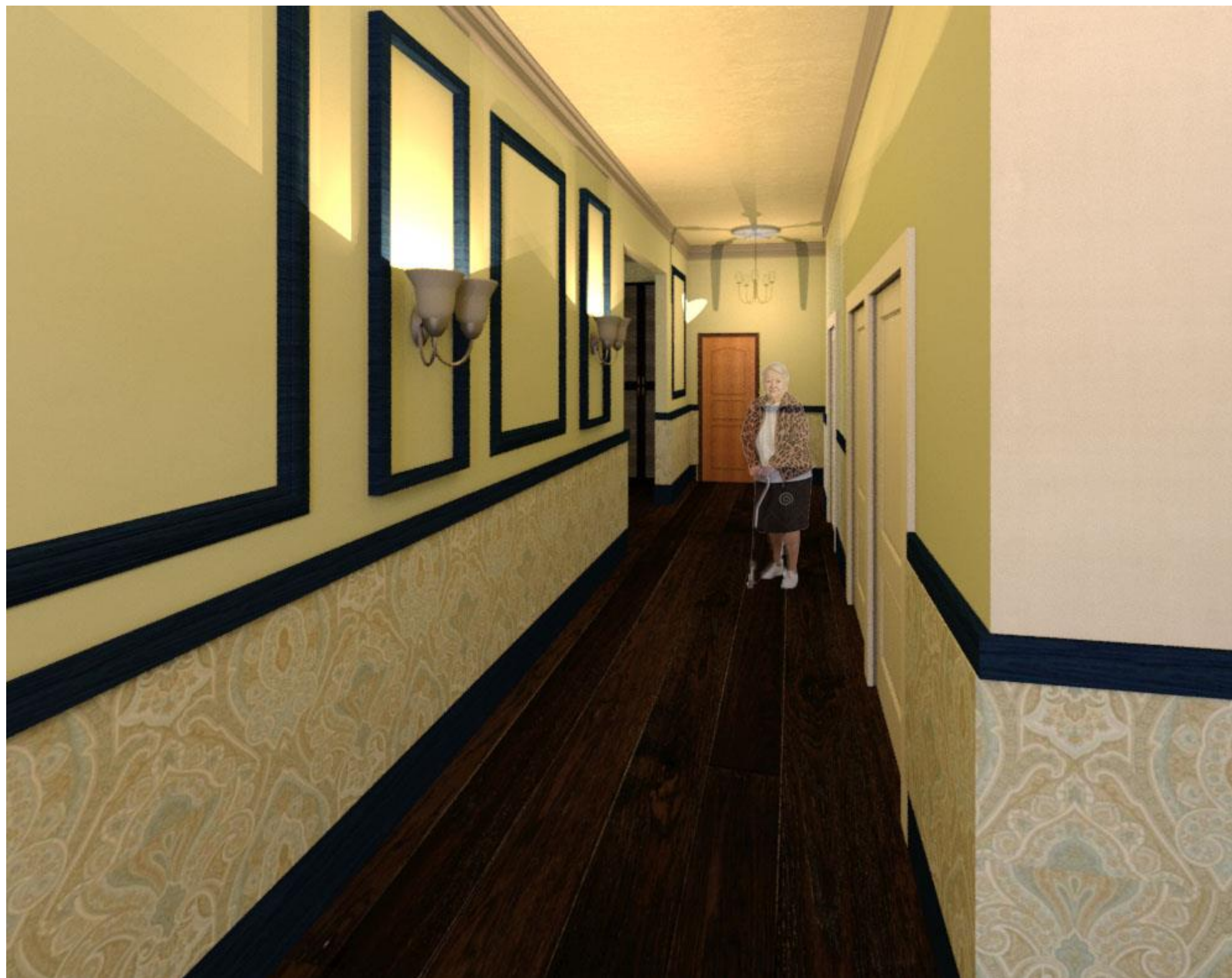


OPTION 1:



OPTION 2:





“Oh there’s my wife,
even dead she still feels
the need to carry that
cane everywhere.”

.....

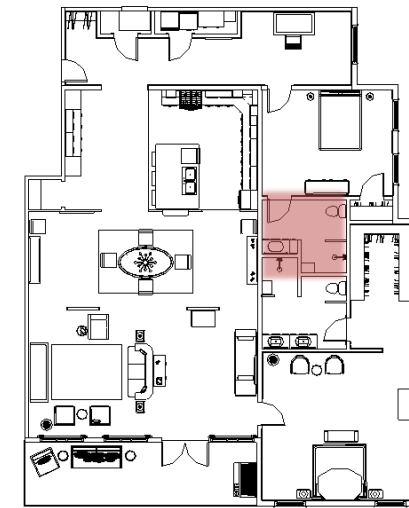
“Each new owner
always asks us why we
never move on with
them, but when it comes
to leaving the building I
designed and our last
home, I’d rather stay
until the day it is
knocked down.”

FLOORPLAN

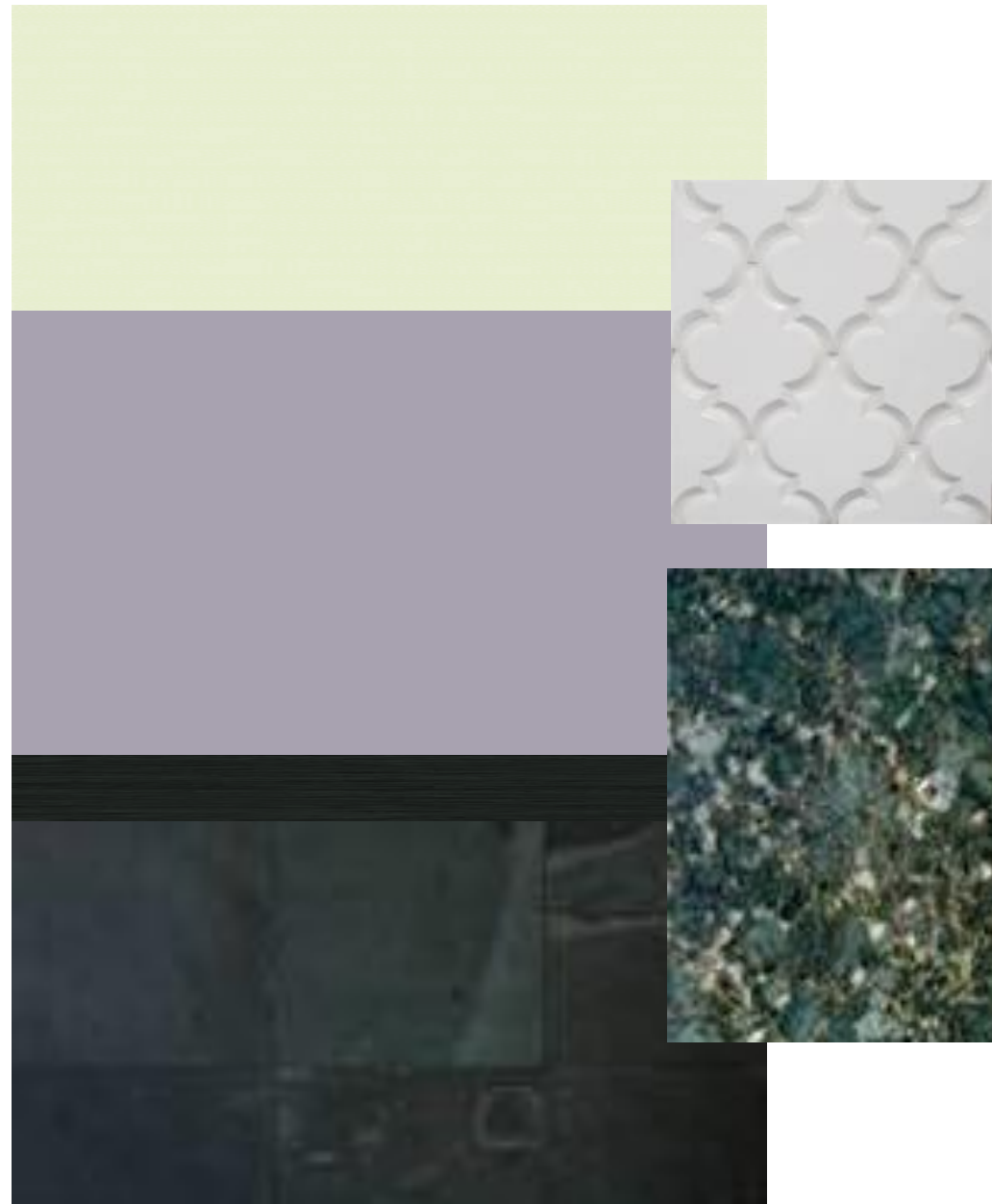


FURNITURE AND FINISHES

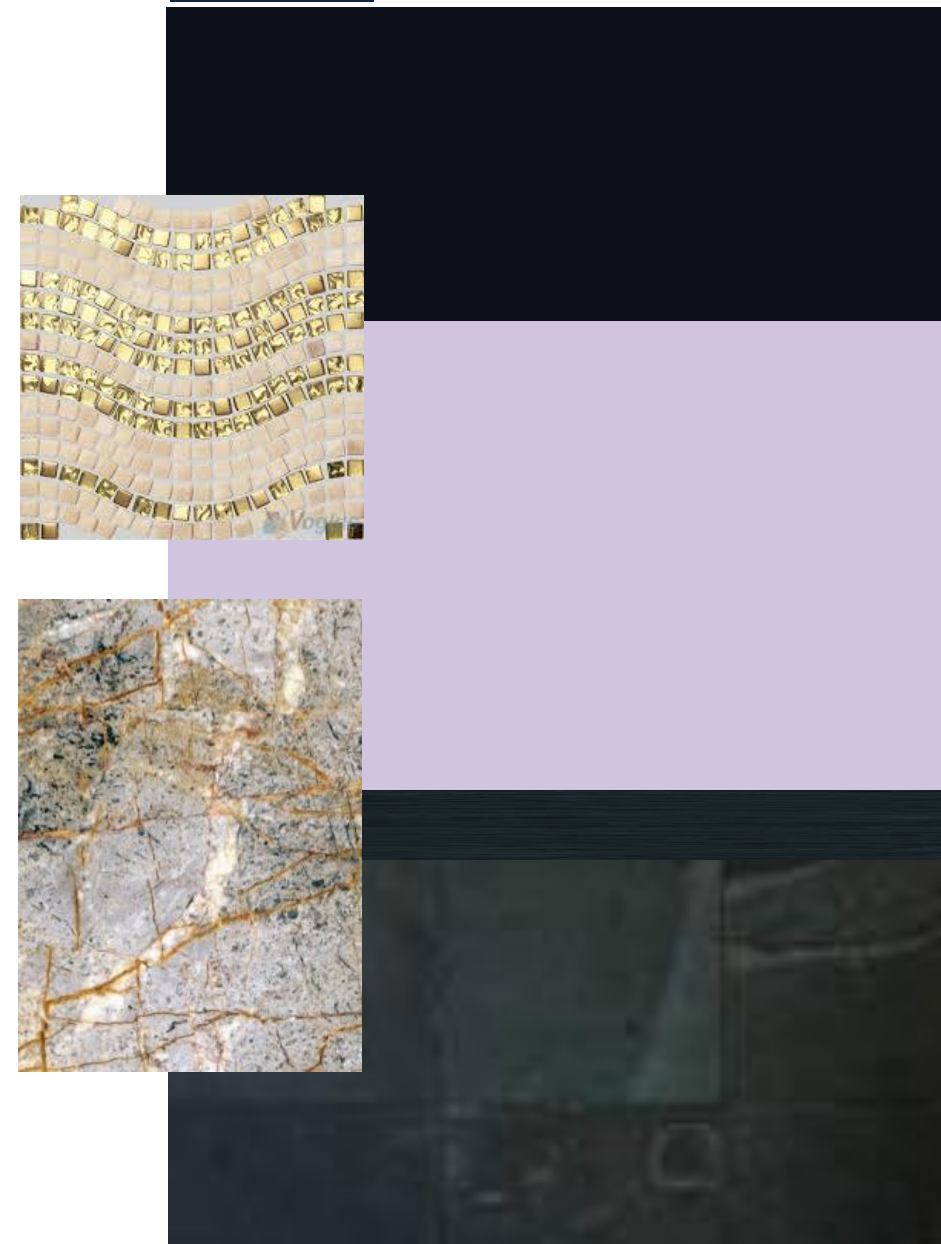
Guest Bathroom



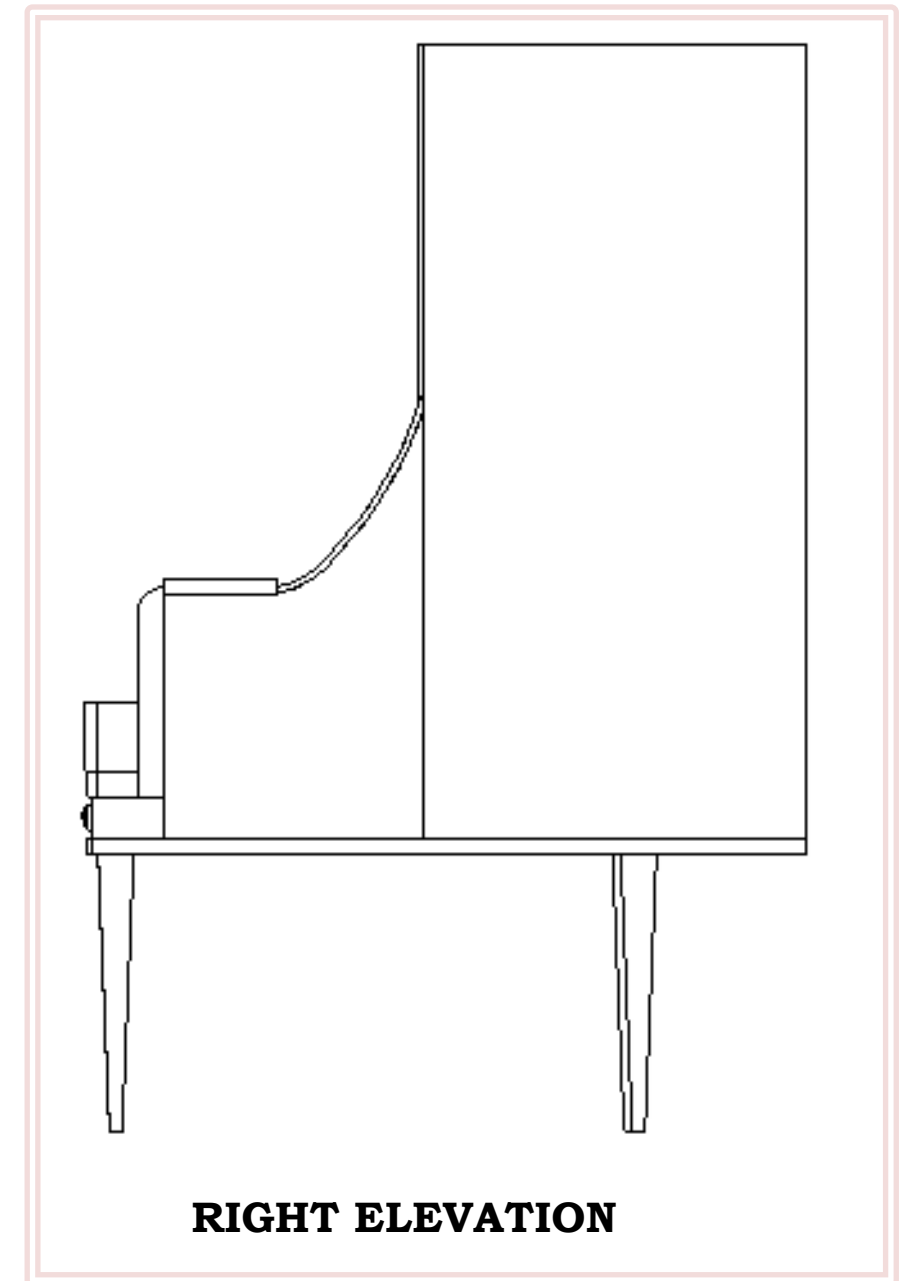
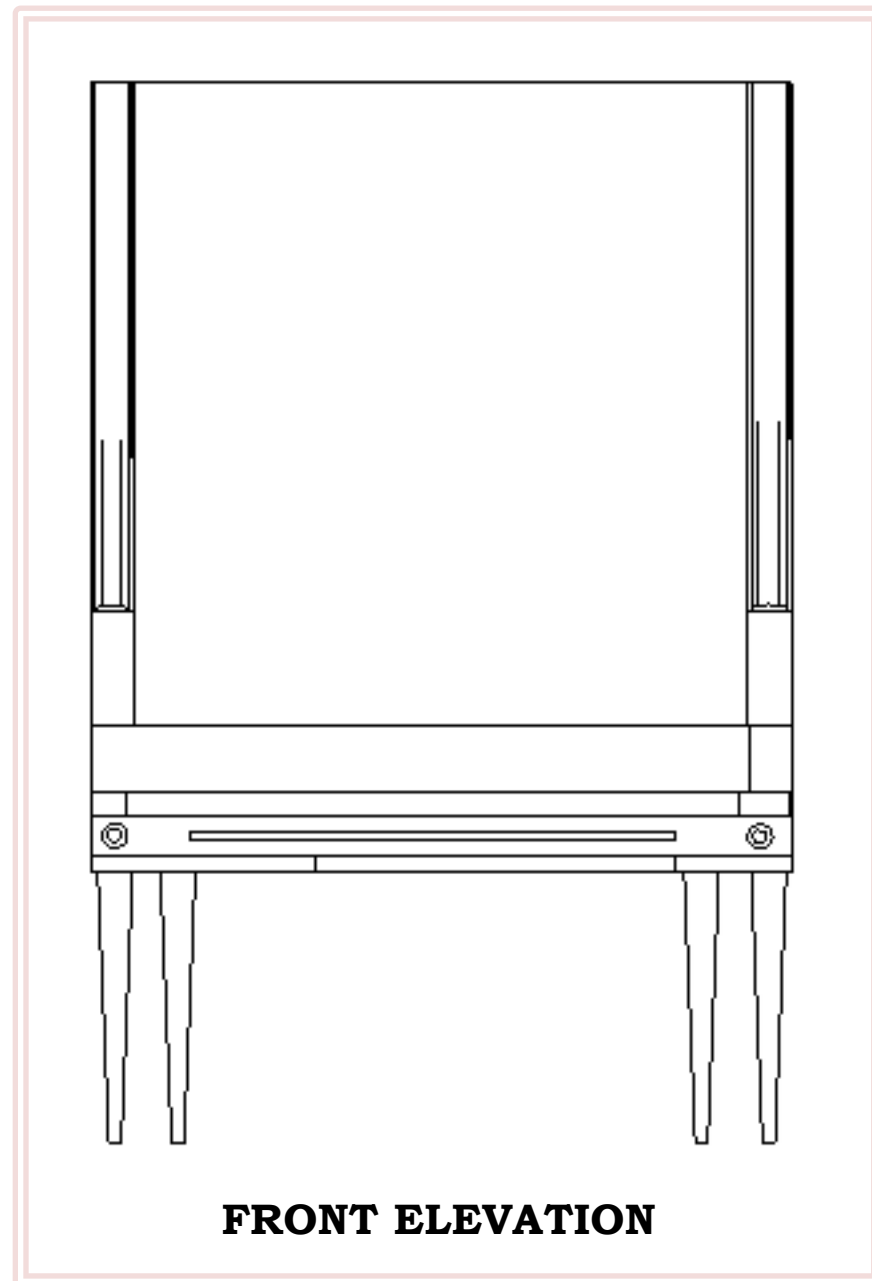
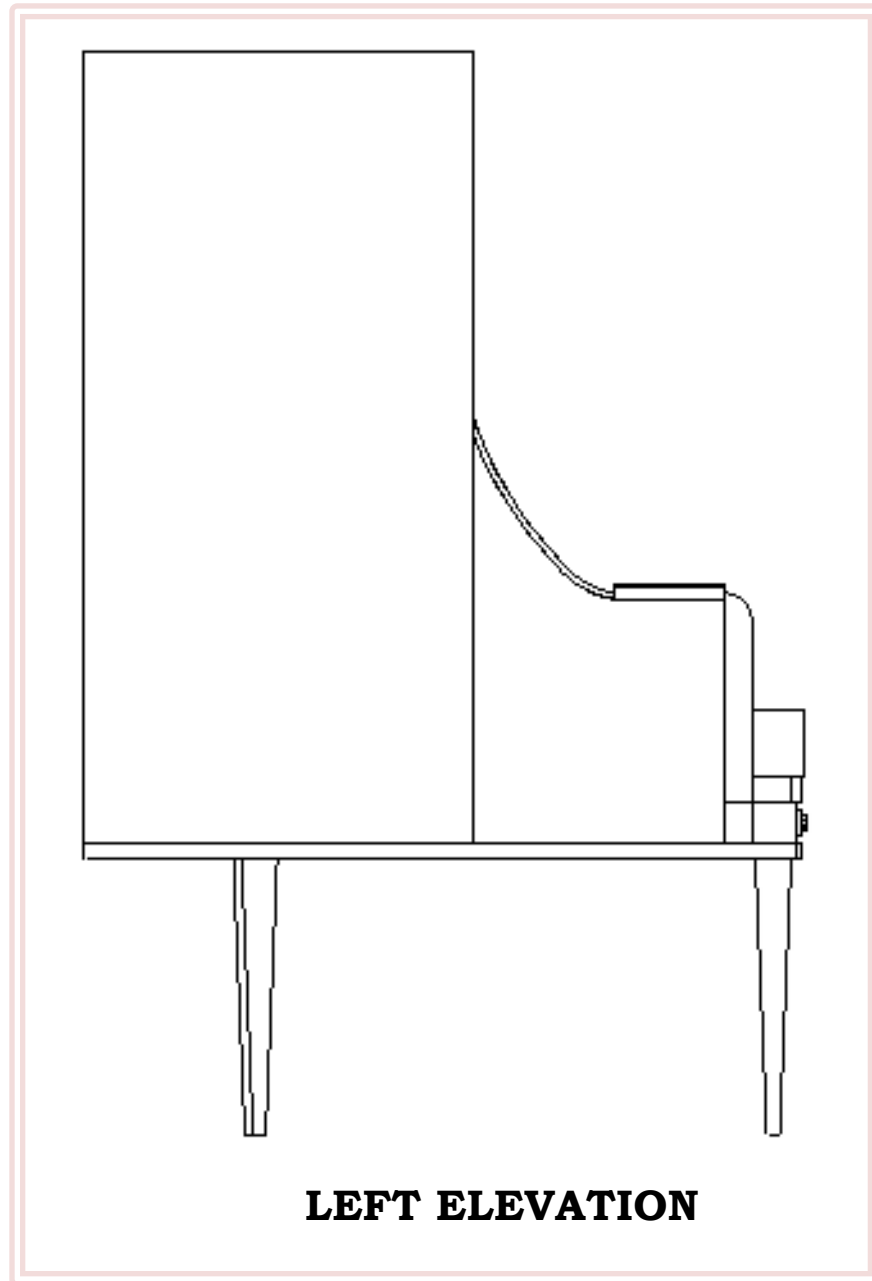
OPTION 1:



OPTION 2:



DESIGNING WITH ANTHROPOMETRICS



DESIGNING WITH ANTHROPOMETRICS

