




# FUSION

Jacinta Cofield  
Georgina Hendricks  
Sara Williamson

# work·sta·tion

/ˈwɜrkˌstɑːʃ(ə)n/ 

*noun*

plural noun: **workstations**

1. a desktop computer terminal, typically networked and more powerful than a personal computer.
2. an area where work of a particular nature is carried out, such as a specific location on a manufacturing assembly line.

# Knoll

## Knoll Office Systems

3 Primary Design Variables:

- Enclosure
- Reconfigurability
- Technology

Systems have different bases:

- Panel Based
- Desk and Table Based
- Storage Based

Knoll also offers Private Office Systems

New Product Line

Rockwell Unscripted – “unrivaled work experience to let spontaneity unfold”

- Each product has its own selection of Finishes and Fabrics
- Product Gallery
- Dimensions
- AutoCAD/Revit/SketchUp/2020 files



Steelcase is devoted to renewing the style and design of the office. There are endless options to rearrange the systems to fit the needs of the space.

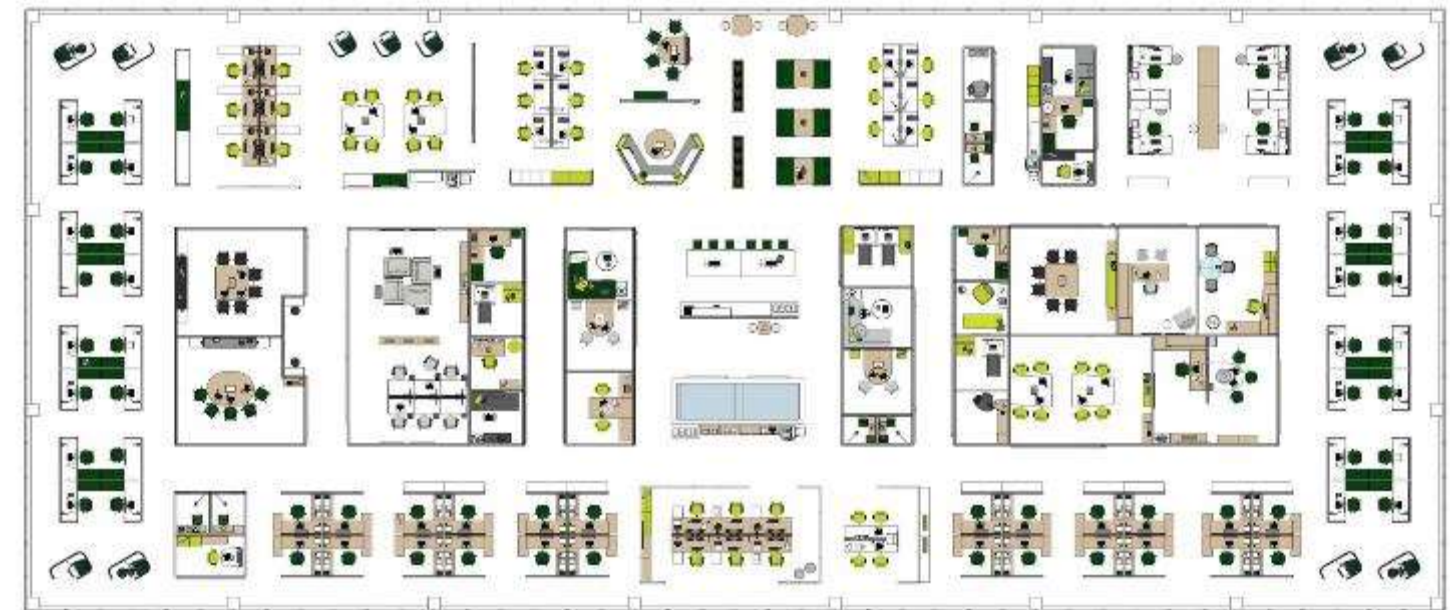
Systems have different options:

- Freestanding
- All-in-one
- Beam and Panel
- Casegood
- Private Office

All Products include:

- Selection of Finishes and Fabrics
- Product Gallery
- User/Specification Documents
- AutoCAD/Revit/SketchUp files
- Planning Ideas

<https://www.steelcase.com/>





# Herman Miller

Herman Miller name is commonly associated with “modern” furniture.

Known as an innovator in contemporary interior furnishings, solutions for healthcare environments and their related technologies and services



This company is based around producing products that are sustainable and centered around human needs.

Designed to make people feel “Welcome, Empowered, Connected, Calm, and Comfortable.”

The company supports other organizations and uses environmental programs to ensure their products are safe and sustainable materials.



# Kimball® International

Began in 1970 as a family business, maintain that spirit throughout the company

“Materials Expert First”



## PROGRAMMING – THE CLIENT PROFILE

Ying yang is a new work environment for startup companies in the downtown area of Durham, North Carolina. The startup companies include service organizations as well as maker organizations.

Service organizations top priority is customer satisfaction. Service organizations include any type of retailing, coupled with pyramid organizations such as Mary Kay.

Maker organizations focus on design, engineering, manufacturing, and education. The purpose of maker organizations is to provide training prior to creating new devices as well as tinkering with existing devices.

Ying yang offers a hoteling office space with or without a membership and activities and features not limited to, massage rooms, childcare, a gym with a yoga studio and a pet zone.





## SITE INFORMATION

**Location:**

320 Roney Street, Durham NC

Near the intersection of Hunt Street and Foster Street.

**Style of Architecture of Building:**

Industrial Style

**Tenant Location Within Building:**

Entire Building, floor will be leveled, Mezzanine removed.

**Sunlight:**

Sunlight will be greatest in the east due to the parking structure being constructed on the west side. There are no windows on the south side of the building so the sun will not impact that portion of the space.



## “BE IN HARMONY, YET BE DIVERSE.”

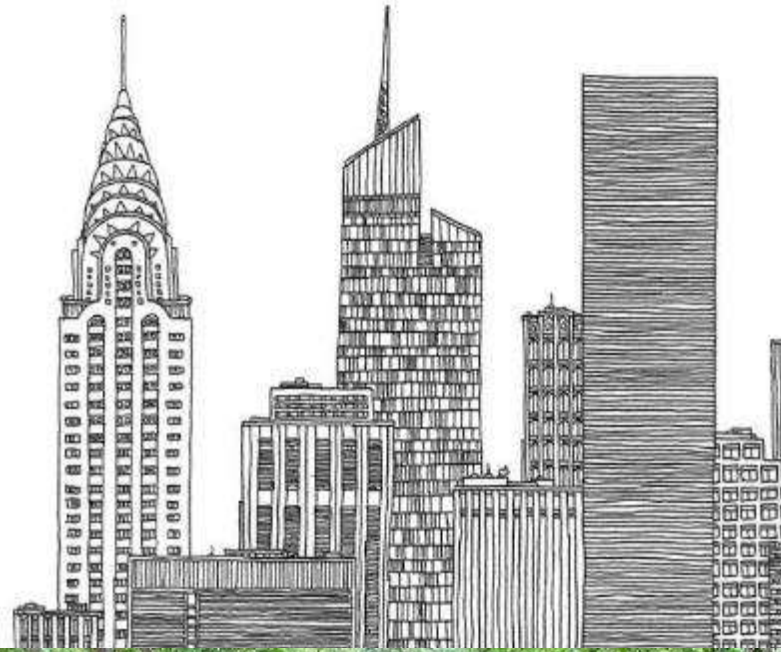
Ying Yang allows a variety of people with different disciplines to come together and work in a space as one. The American Underground in Durham, North Carolina and New York City's High Line Park were incorporated in the design of Ying Yang. The two places were combined within the design to create harmony.

Harmony is congruity and congruity conveys balance. The design will enable members of different companies to balance work life. With a balance in work-life, people working in the space will be able to de-stress and recharge during a day at work.

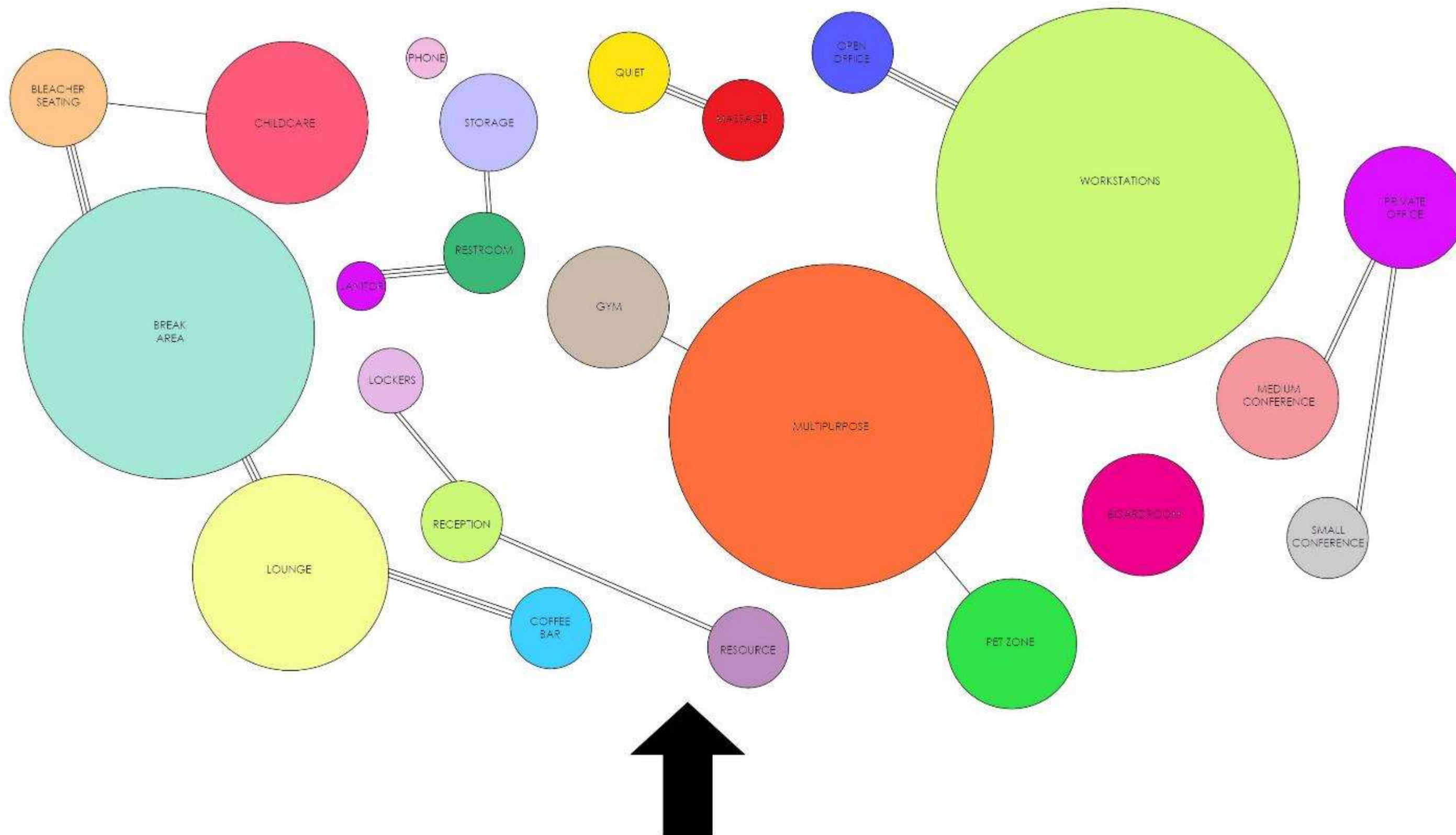
Harmony is also referred to as parallelism and parallelism occurs when two parts are balanced. Ying Yang will balance service organizations as well as maker organizations, while promoting a sense of community by providing multiple opportunities for members of different companies to interact with each other.



# INSPIRATION



# BUBBLE SCHEMATIC



# LEVEL ONE BLOCKING SCHEMATIC NO.1



# LEVEL TWO BLOCKING SCHEMATIC NO.1



# LEVEL ONE BLOCKING SCHEMATIC NO.2





# LEVEL TWO BLOCKING SCHEMATIC NO.2

