



**Marlyn Stevenson, Madison Rizzo, Erin Weisman**

# Client Identity

## Developer of Building:

- Patterns
- Sustainability
- Preservation
- Greenery
- American Underground,
- New York city's high line park
- clean lines of London's central working co-working space.
- modern and transitional furniture
- bold approach to office areas

## Project Management by MHA Works:

- architecture, planning and design
- commercial
- sustainability
- Light and acoustics
- Wayfinding
- Teamwork
- Balanced, beautiful and caters specifically to the client



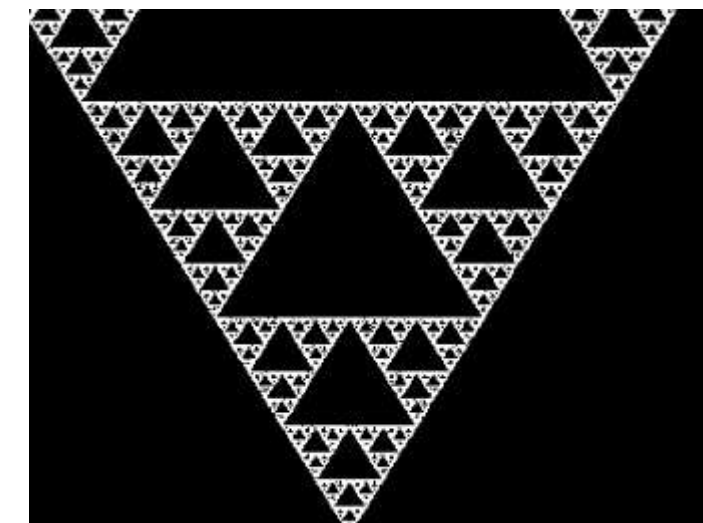
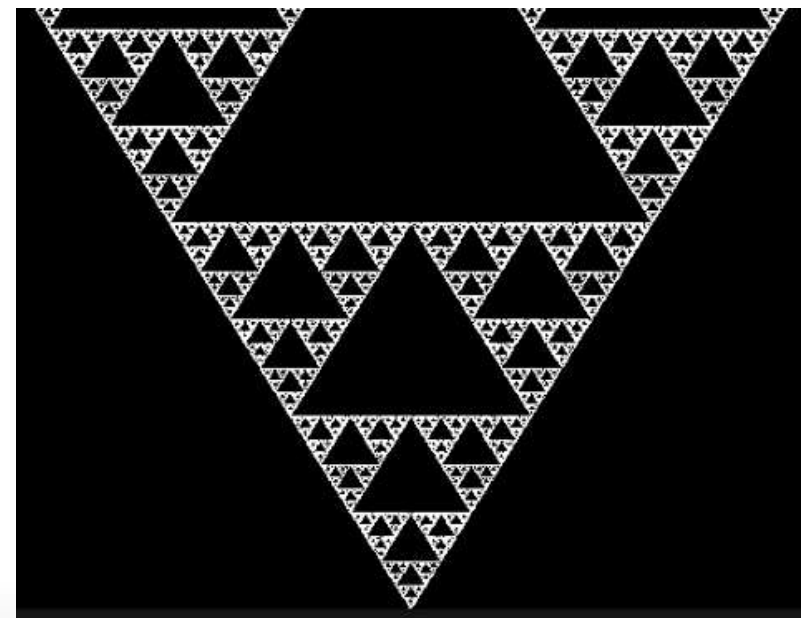
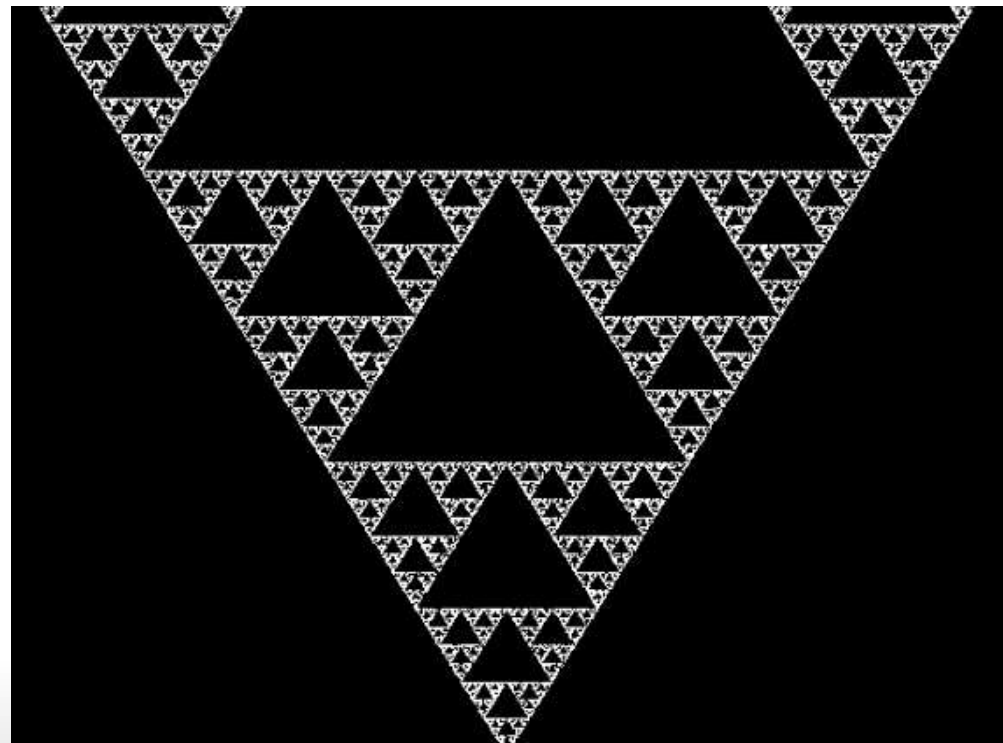
# LEED Building

- Prerequisites, credits and points all cater to getting a certificate.
- Prerequisites are the minimum requirements that all buildings need to meet to achieve LEED certification
- Credits come from what rating system that applies to the project type
- Credit library available from United States Green Building Council website.
- Some credits pair well with certain prerequisites and other credits
- Prerequisites are the foundation, credits are everything else (helps to earn your points.)
- Points are the higher reward- healthier spaces, saving money and resources.
- Number of points determines the certification.
- Certifications – Certified (40-49), Silver (50- 59), gold (60-79) Platinum (80+)
- This building is either, LEED O+M: Existing Building or LEED ID+C: Commercial Interiors.



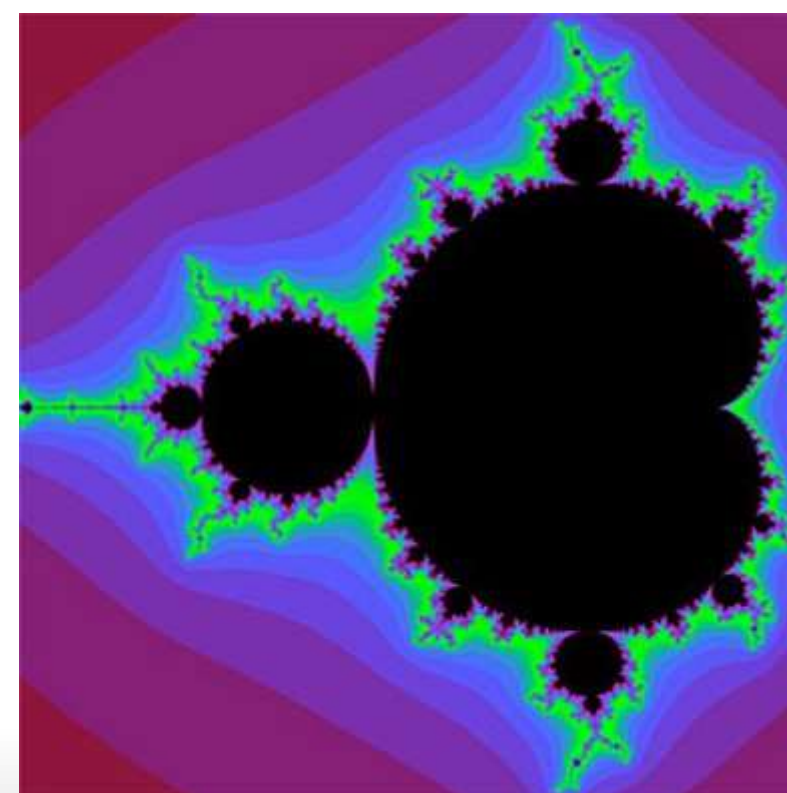
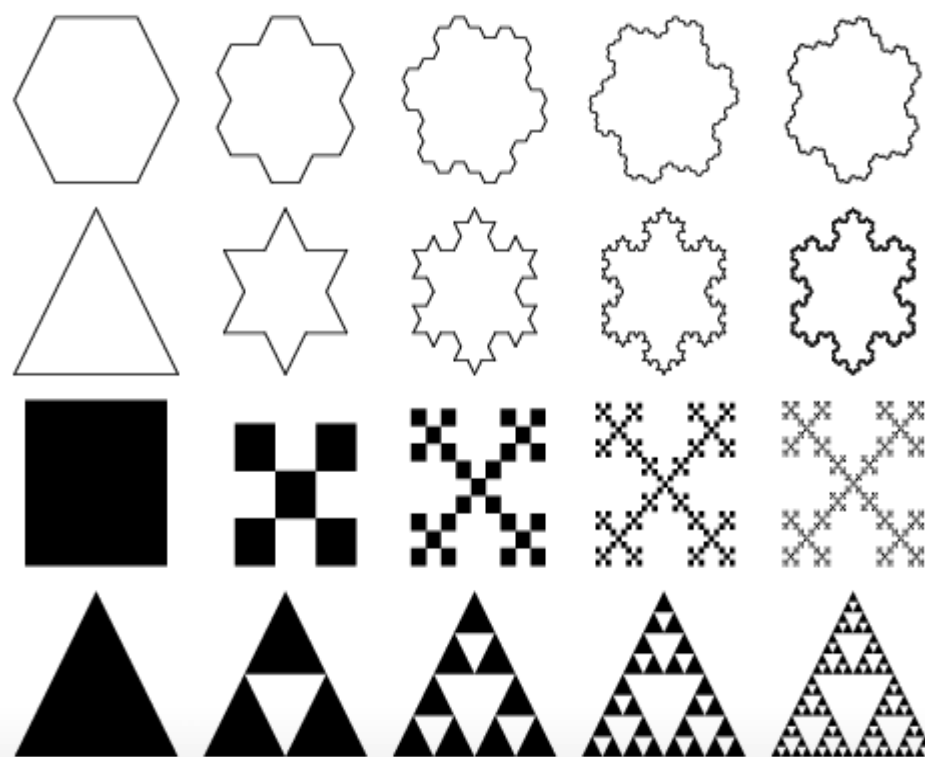
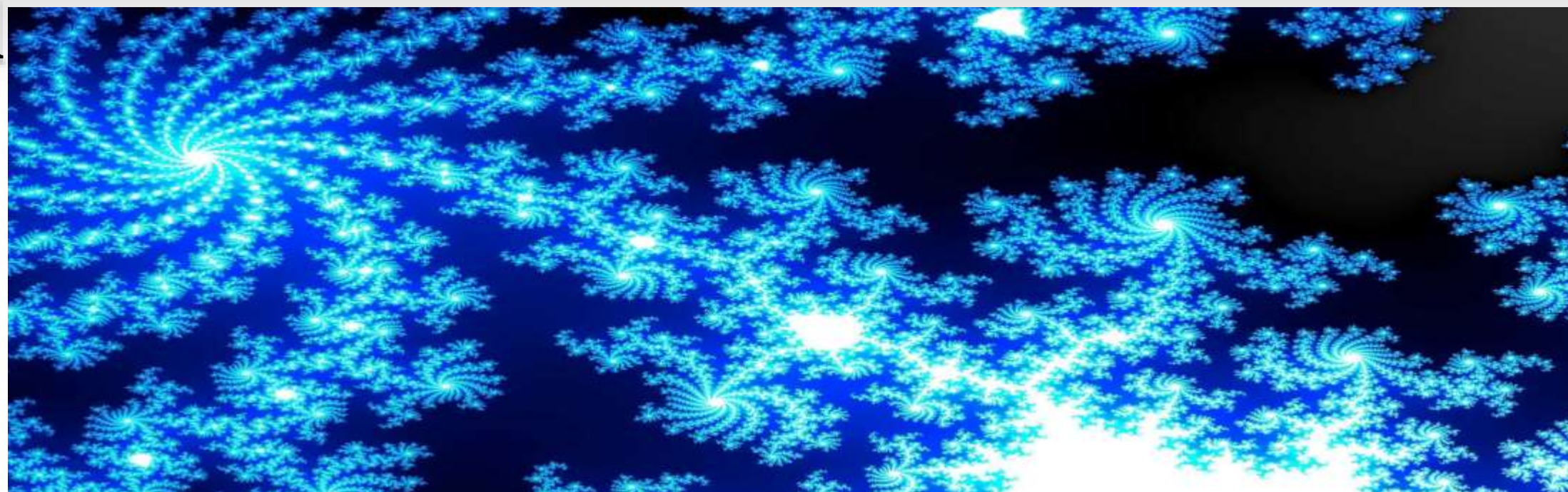
# Fractals

- Fractals are a curve or geometric figure, each part of which has the same statistical character as the whole.
- Fractals connect everyone in the world through computers and phones, satellites
- Everything and everyone connected





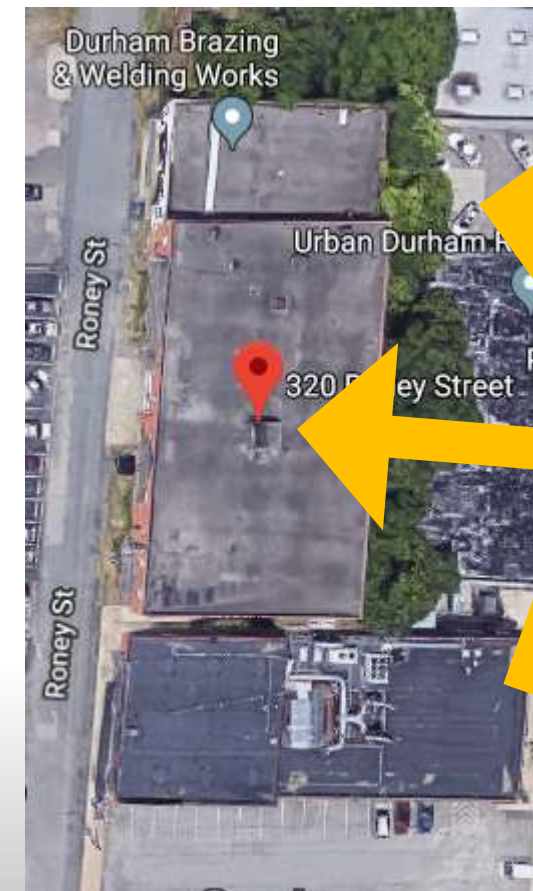
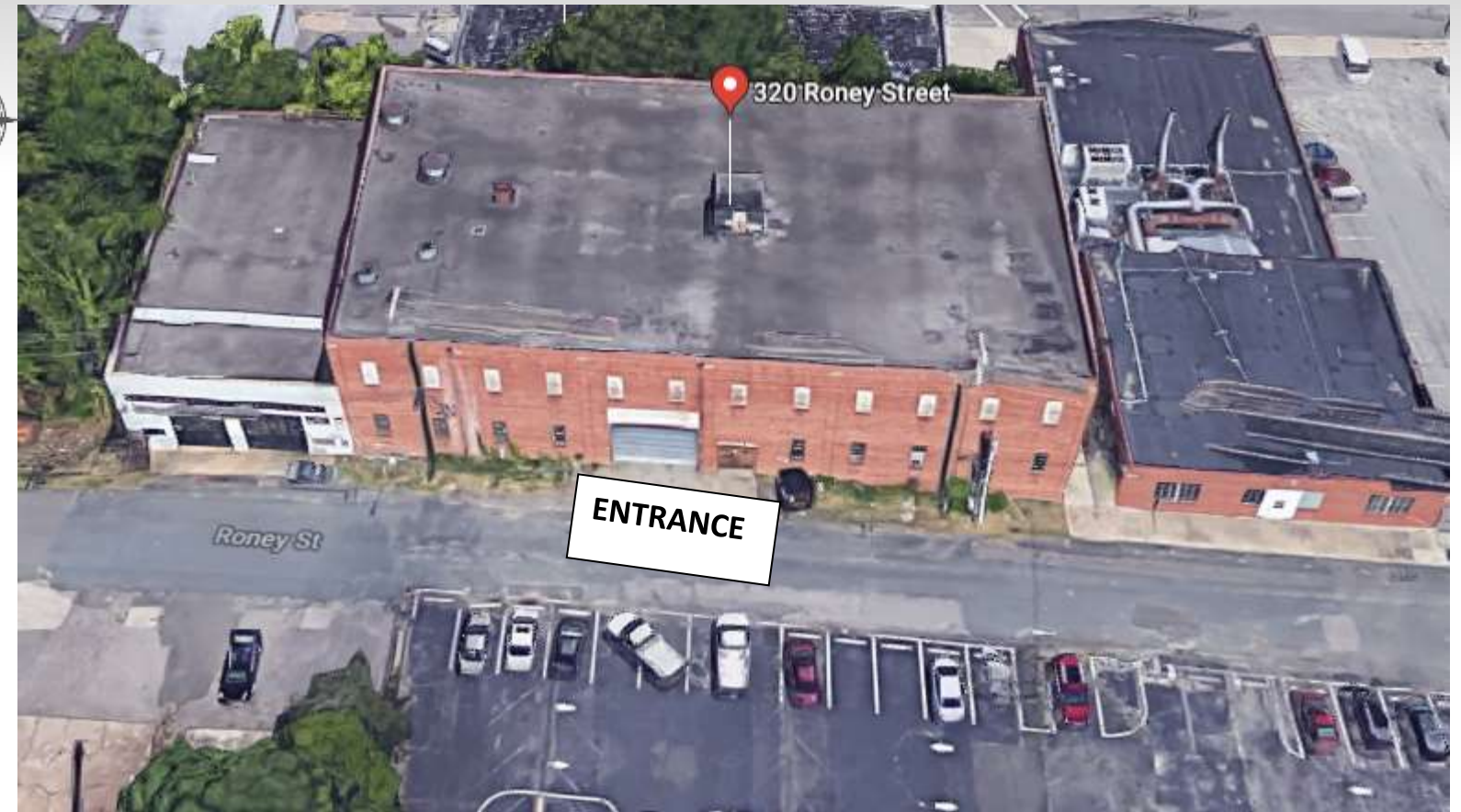
# Inspirational Images



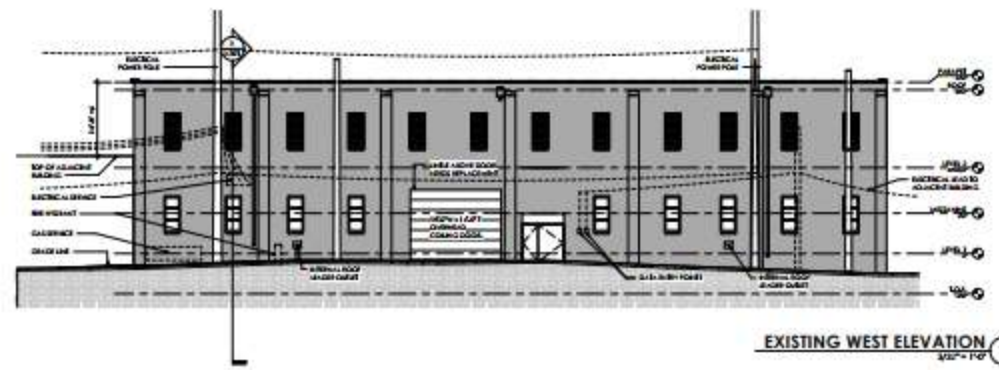
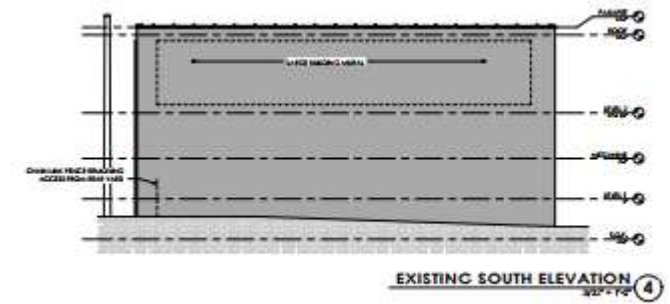
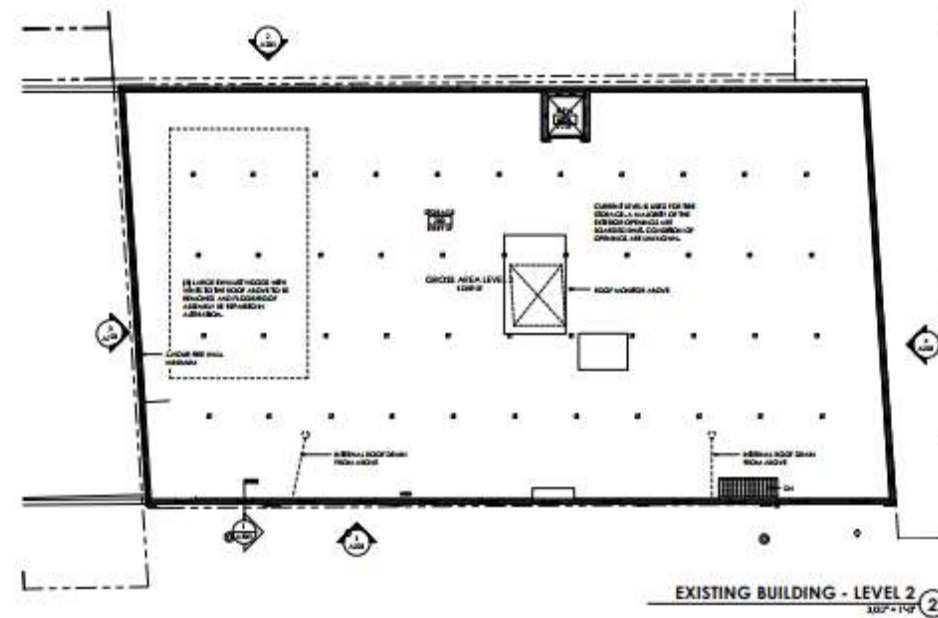
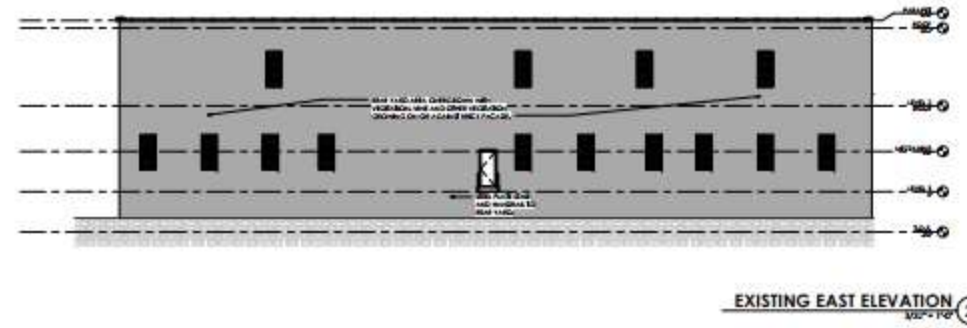
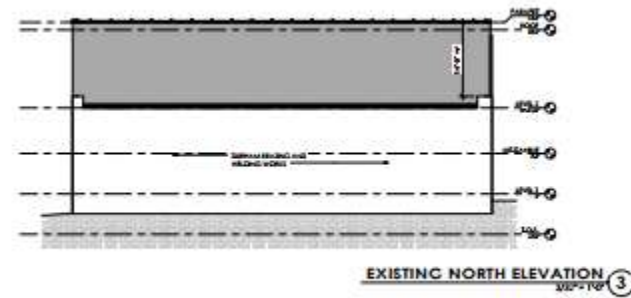


# Site Information

- 320 Roney Street, Durham, NC
- Two Story brick building
- Built 1925-1937
- Initially used as a tobacco warehouse
- Trading company bought it in 1950
- Lots of columns



# Site Overview





# Program

## Creative Services

### PERSONNEL

Personnel Spaces:	Personnel Totals		Unit Square Ft.		Extended Sq. Feet	Equipment			Notes
	Current	Future	Office	Workstation		PC	Printer	Fax	
Private Offices	0	8		120	960				
Co-Working Stations	0	80		36	2880				Provide Acoustics
					0				
<b>Personnel Totals:</b>	<b>0</b>	<b>88</b>			<b>3840</b>	<b>0</b>	<b>0</b>	<b>0</b>	

Department Summary Information:		
Sub Total:	12885	Square Ft
Total Program Usabl	19843	Square Ft
Total 1st:	9928.7	Square Ft
Total 2nd:	10328	Square Ft
Total Plan Usable:	20257	Square Ft

### SUPPORT/EQUIPMENT SPACES

Space	Support/Equipment		Unit Square Feet	Extended Sq. Feet	Location	Notes
	Current	Future				
Board Room	0	1	450	450		Provide Seating for 40
Open Lounges	0	2	1000	2000		
Break Room	0	1	300	300		
Medium Conference	0	5	300	1500		
Small Conference/Meeting	0	5	120	600		Work counters
Phone Stations	0	6	36	216		
Resource Center	0	1	144	144		
Gym	0			0		
Storage	0	1	80	80		
Coffee Bars	0	3	35	105	Adjacent to Entry	
Main Floor Reception	0	1	450	450		Provide Bleacher Seating
Second Floor Reception	0	1	200	200		
				0		
Suite 3000	0	1	3000	3000		
<b>Support Totals:</b>				<b>9045</b>		

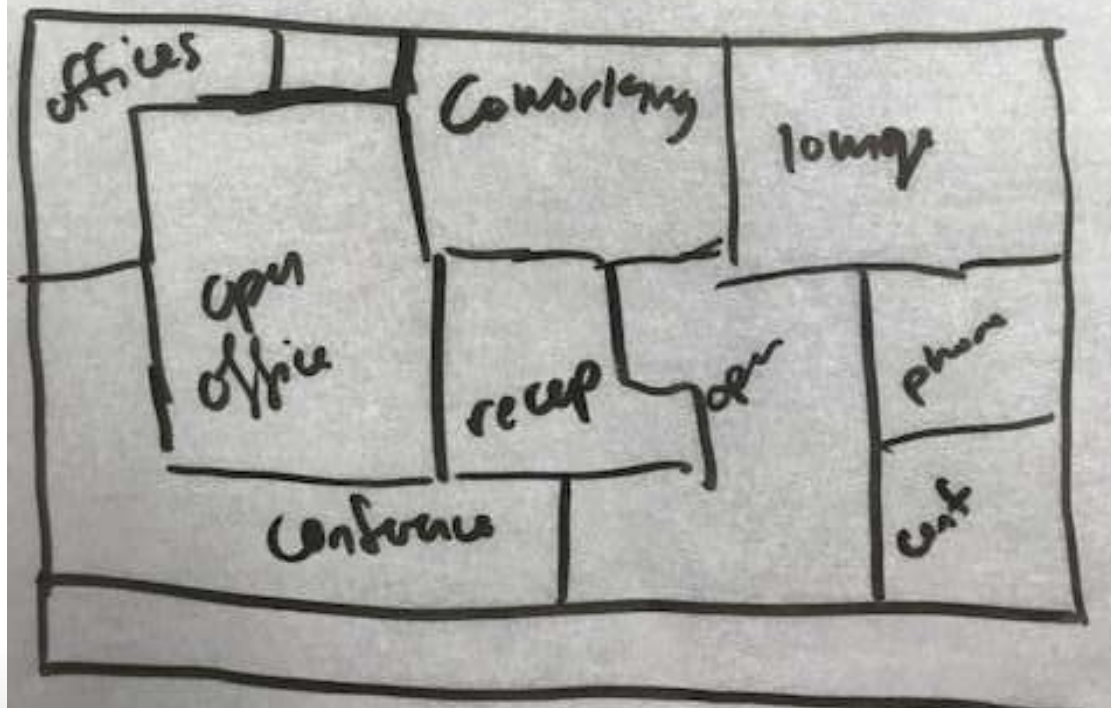
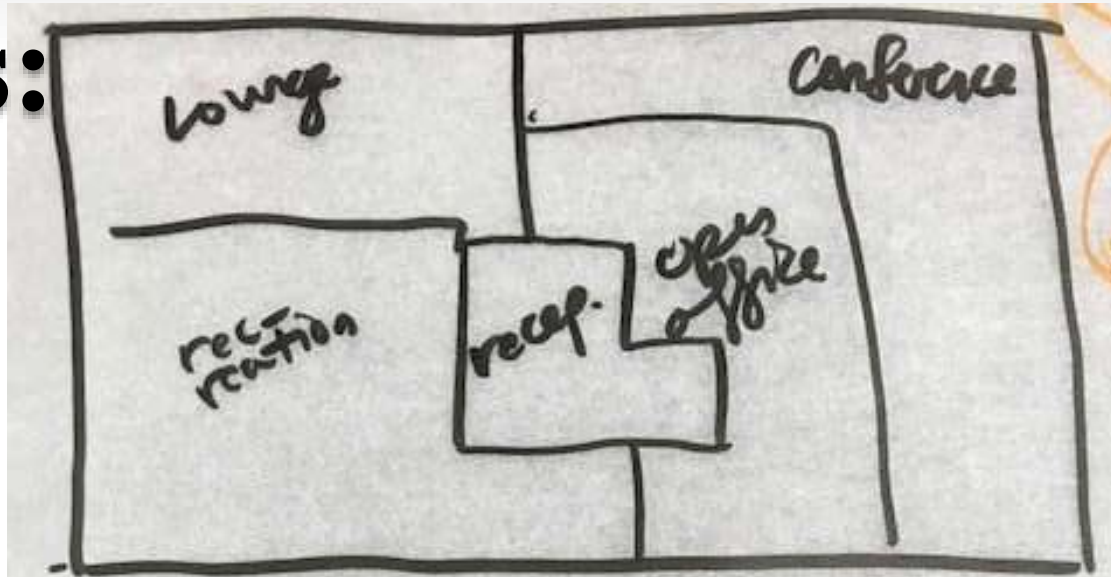
### Department Notes:



# Bubble Diagram



# Blocking Diagrams:





# Blocking Diagrams:

