
METHOD
ASSOCIATES

Specialized. Functional. Engaging.

Social Behavior in the Workplace:

-Employee behavior: refers to the way in which employees respond to specific circumstances or situations in the workplace.

-Workplace behavior: pattern of actions and interactions of the members of an organization that directly or indirectly affect its effectiveness.

A positive workplace should provide the following:

Good Behavior

- Ability to be friendly/courteous
- Proper communication
- Ability to work in a team
- Ability to take on leadership
- Having strong personal drive

Bad Behavior

- Being non-responsive
- Being lazy
- Whining
- Conforming to “cliques”
- Refusing to share resources

- Positive Values
- A relaxed and positive atmosphere
- Commitment to excellence
- Open and honest communication
- Compassion, respect, and understanding
- Cooperation and support
- A sense of humor
- Flexibility
- Positive reinforcement
- Positive reinforcement
- An emphasis on health, family, and the environment



Generational Aptitudes and Preferences:

-Baby Boomers:

- Have ability to adapt to changes easily
- Crave focused concentration (usually alone)
- Work largely independently
- Conduct meetings with coworkers and bosses
 - Need conference/meeting rooms
- Like enclosed areas to act as dedicated project area

-Generation X:

- Want flexibility, equality, and a voice in the workplace
- Typically skeptical about big companies
- Attracted to smaller, less-bureaucratic businesses
- Can appreciate the stability that larger firms allow

-Millennials:

- Move fast and efficiently
- Use tons of technology
- Work best in groups
- Look to peers for information
- Prefer face-to-face communication
- Prefer work environments where they can choose to work separately or in groups
- More efficient in a well-designed workplace
- Like open, dependable workplaces where information can be compared and knowledge can be shared
- Want to select where they work, with no boundaries
- Technology is a must



Program:

Space	Support/ Equipment	Unit Sq. Ft.	Extended Sq. Ft.	Location	Notes
Large Board Room	1	500	500	n/a	40 People
Medium Conference Room	5	300	1500	n/a	6-8 People
Small Conference Room	5	150	750	n/a	4-5 People
Open Lounge Spaces	2	n/a	n/a	n/a	n/a
Break Area	1	300	300	n/a	Custom Bar
Kitchen	1	1000	1000	Near Café	Microwave, 2 Refrigerators, 2 dishwashers, coffee maker, Fruit & Veggie Fridge
Café/Table Area	1	400-500	400-500	Near Kitchen	Booth, tables, bar & banquet
Office Spaces	40	36-120	1440-2400	Scattered	Mix of private and open offices
Phone Rooms	5 to 8	36	180-384	Scattered	n/a
Entry Space	2	100-300	200-600	Entry	Natural light for both suites
Bleacher Seating area	1	450	450	Entry	In suite areas
Small Coffee Bars	3	36	108	Scattered	Scattered in suites
Gym	1	240	240	n/a	n/a
Storage Closet	1	240	240	n/a	Furniture Storage
Multipurpose Space	1	2965	2965	Suite 3000	
Total Sq.Ft.			11937		

Department Summary		
Information:		
Equipment	11937	Square Ft.
Already Allocated	700	Square Ft.
Sub Total:	12637	Square Ft.
Cirulation	1.54	
Total Program Usable:	19460.98	Square Ft.
Total Plan Usable:	22687.53	Square Ft.

Already Allocated in Plan	Support/Equipment	Unit Sq. Ft.	Extended Sq.Ft.	Location	Notes
Lobby	1	600	600	Enrty	Includes Bathroom, Stairs and Elevator
Janitors Closet	1	72-100	72-100	Next to Bathrooms	
Total Sq.Ft.			700		



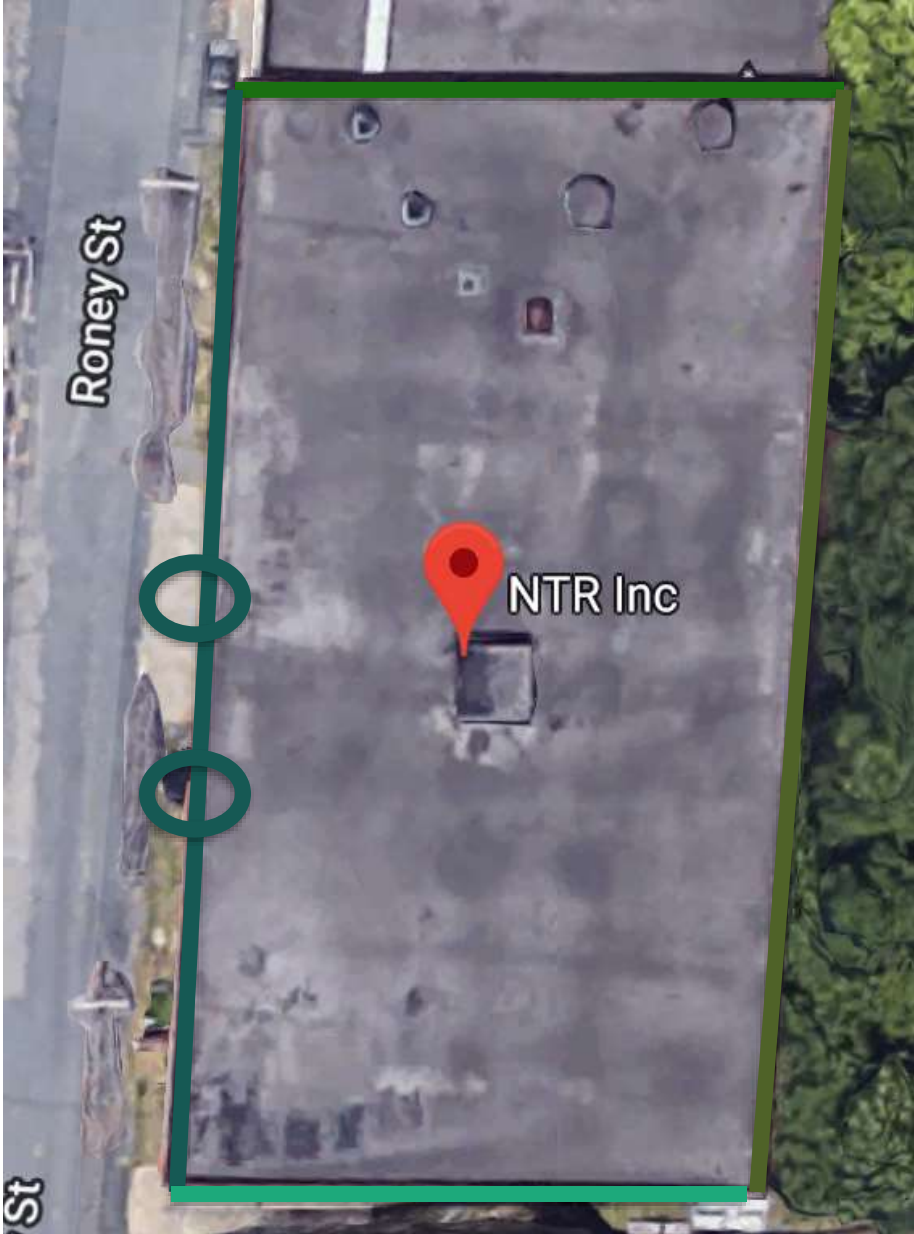
Site Evaluation:

North: No direct Sunlight

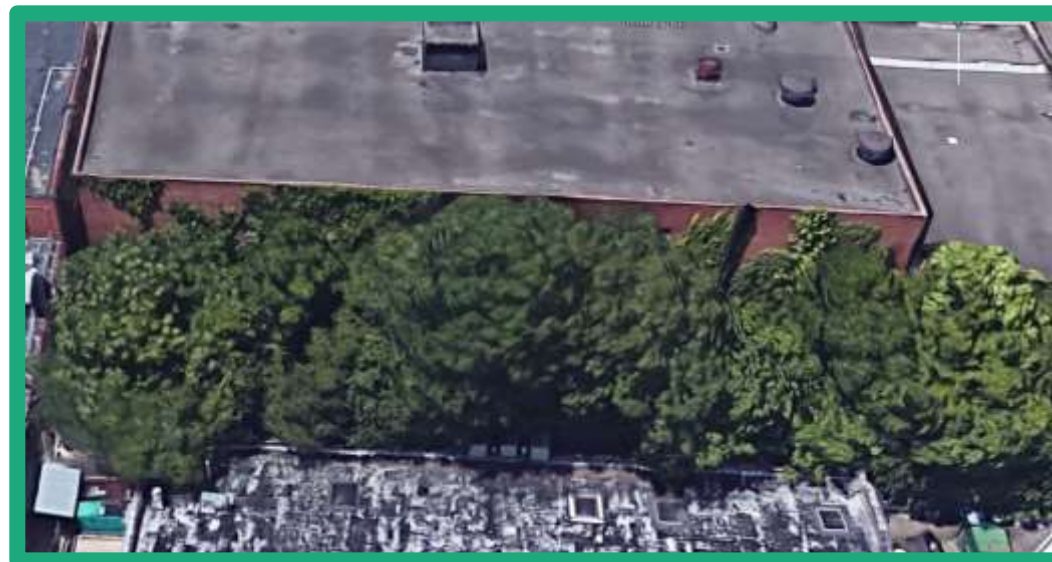
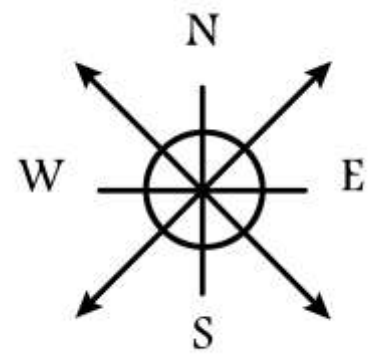
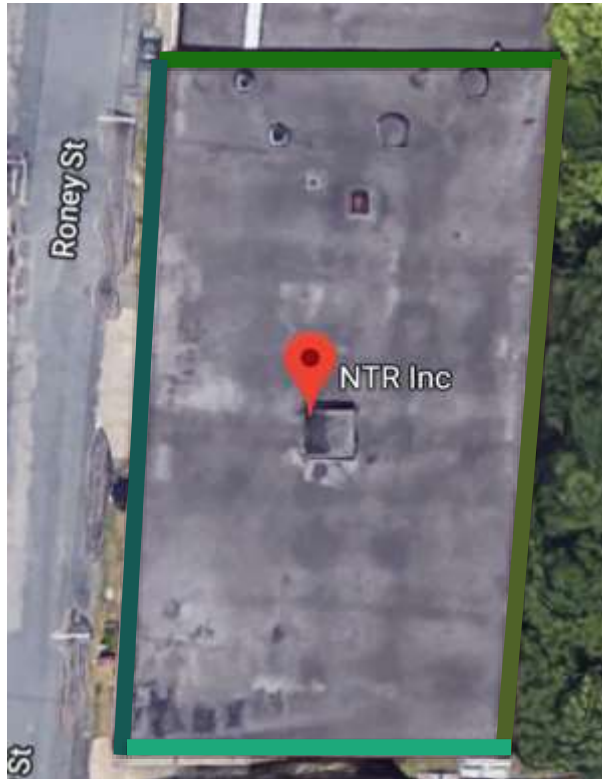
West: Evening Sunlight

South: Continuous Sunlight

East: Morning Sunlight



Exterior Views:



Concept Statement:

Transmission (Absorption of Light)

Open and private spaces empower creativity, allowing for the formation of new ideas.

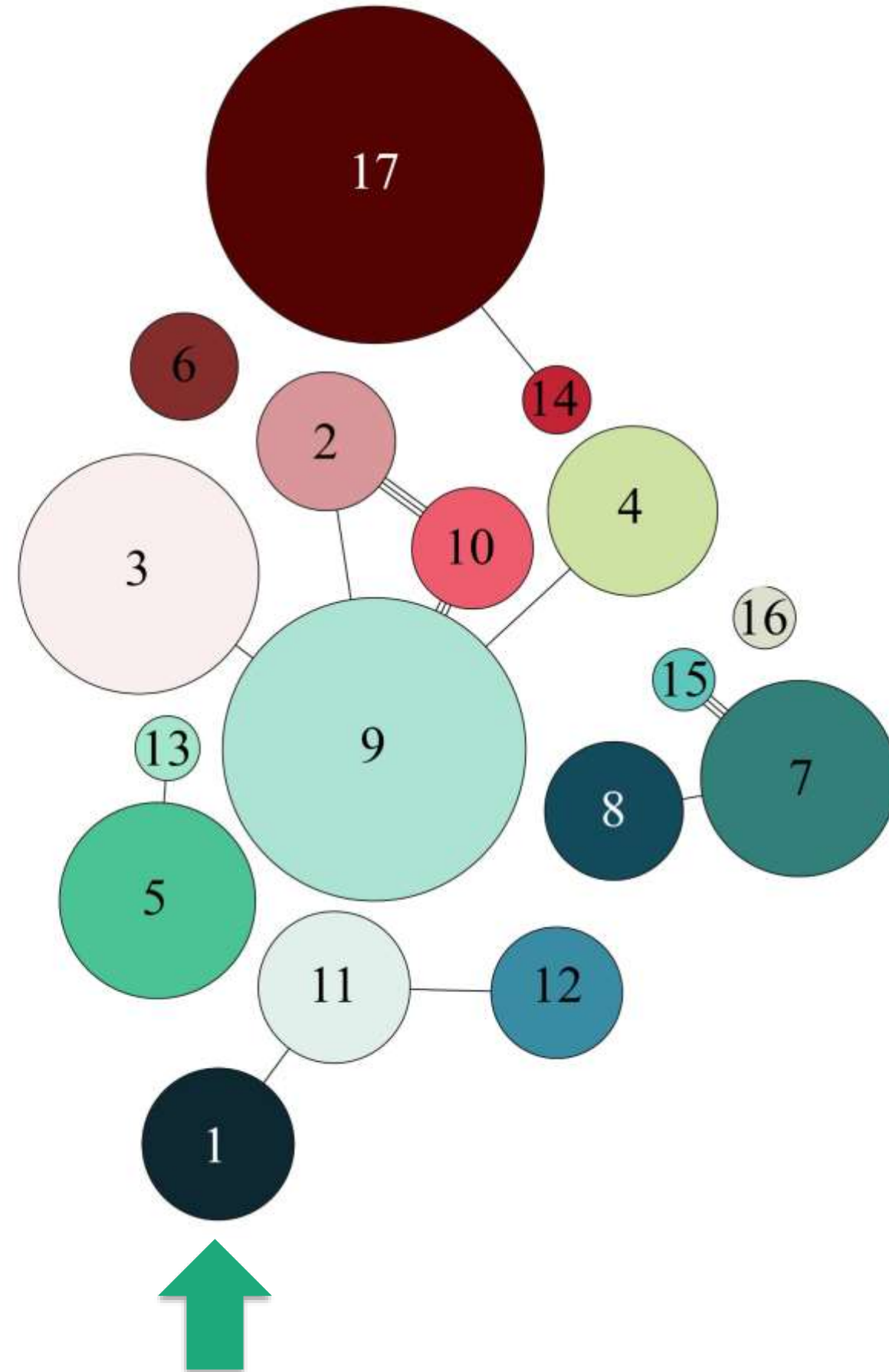


Inspiration Images:

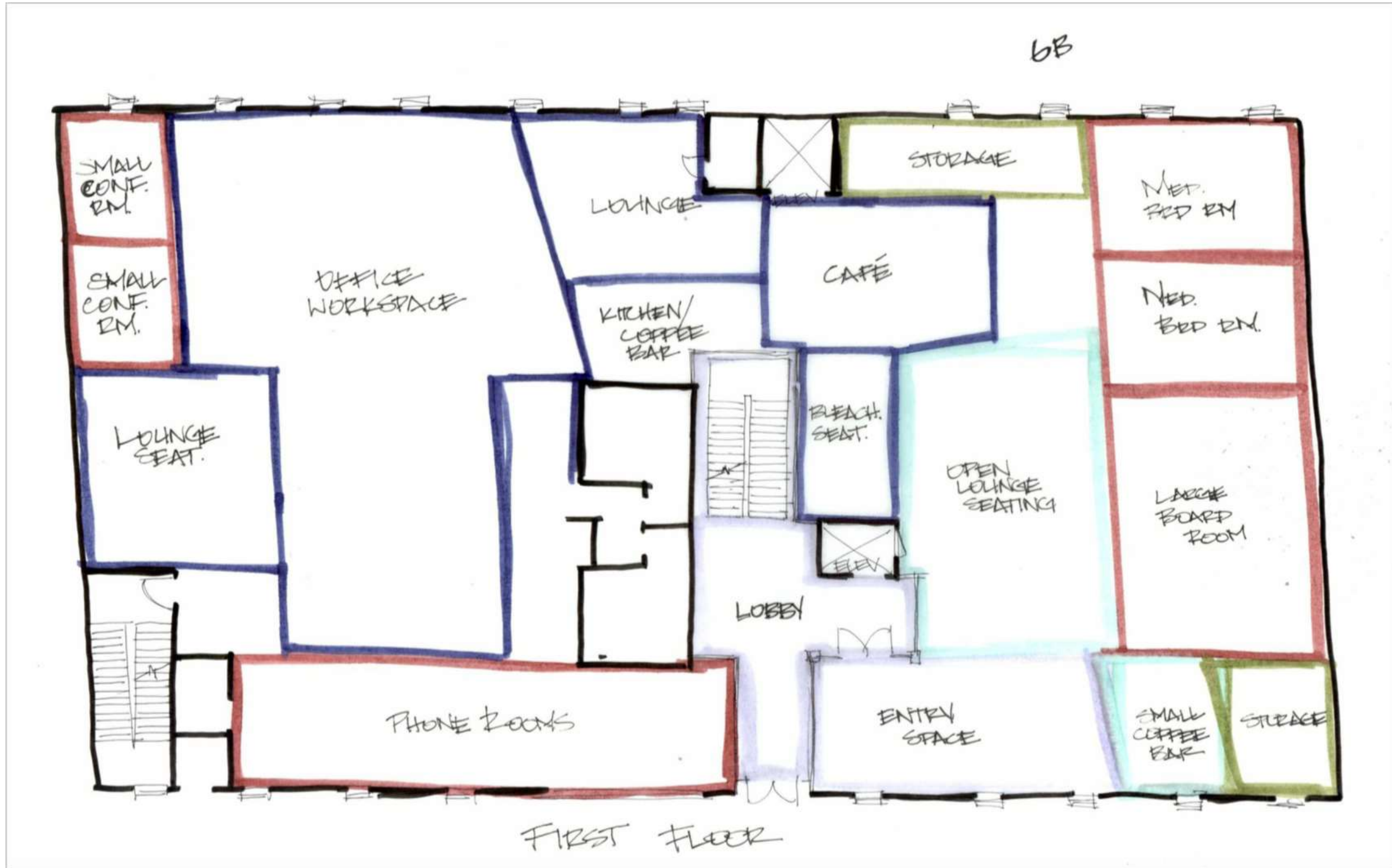


Bubble Diagrams:

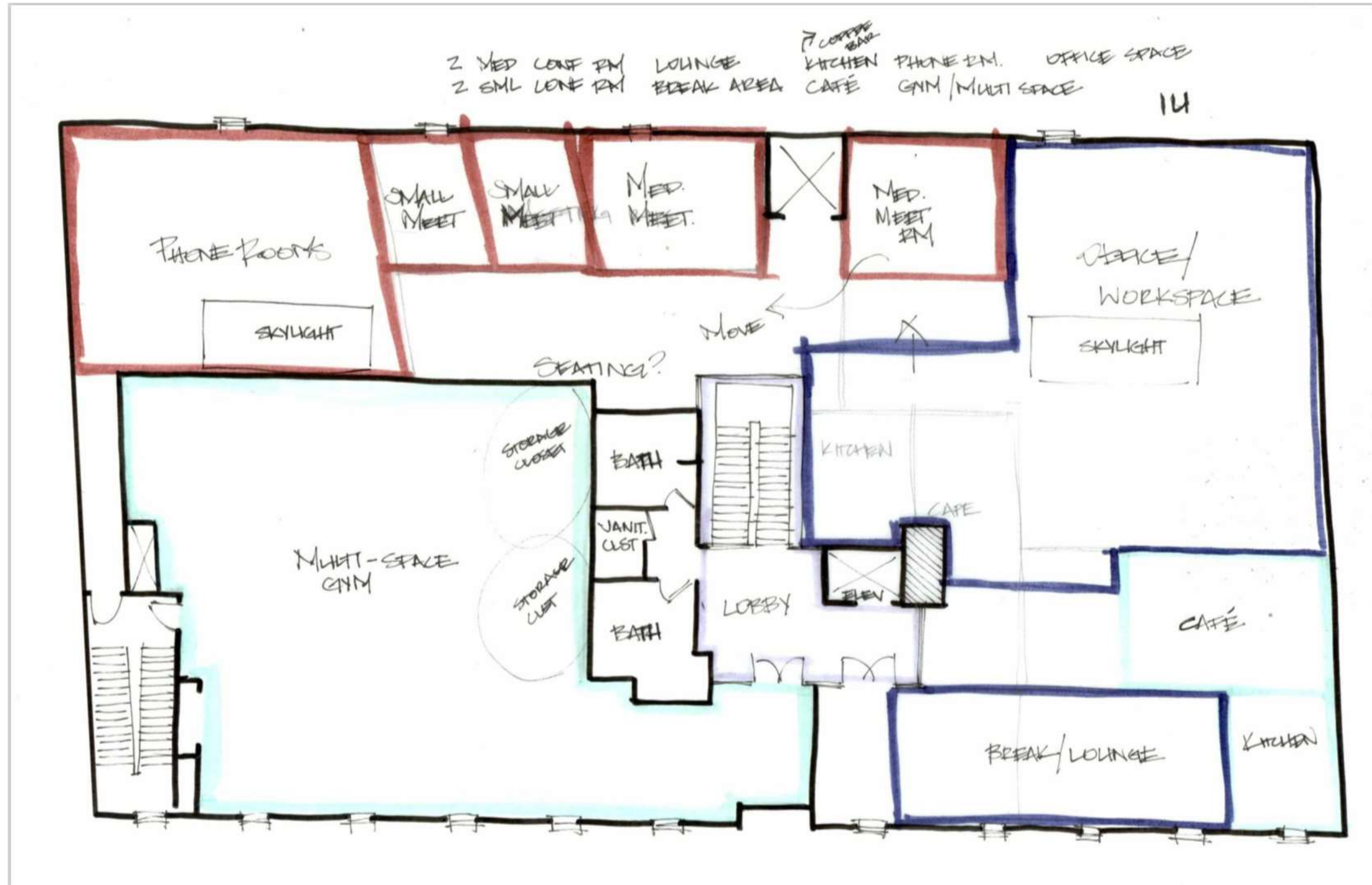
- 1 – Lobby – 600 sq. ft.
- 2 – Large Board Room – 500 sq. ft.
- 3 – Medium Conference Room – 1500 sq. ft.
- 4 – Small Conference Room – 750 sq. ft.
- 5 – Open Lounge Space – n/a
- 6 – Break Area – 300 sq. ft.
- 7 – Kitchen – 1000 sq. ft.
- 8 – Café – 500 sq. ft.
- 9 – Office Spaces – 2400 sq. ft.
- 10 – Phone Rooms – 384 sq. ft.
- 11 – Entry Space – 600 sq. ft.
- 12 – Bleacher Seating Area – 450 sq. ft.
- 13 – Small Coffee Bars – 108 sq. ft.
- 14 – Gym – 240 sq. ft.
- 15 – Janitors Closet – 100 sq. ft.
- 16 – Storage Closet – 240 sq. ft.
- 17 – Multipurpose Space – 2965 sq. ft.



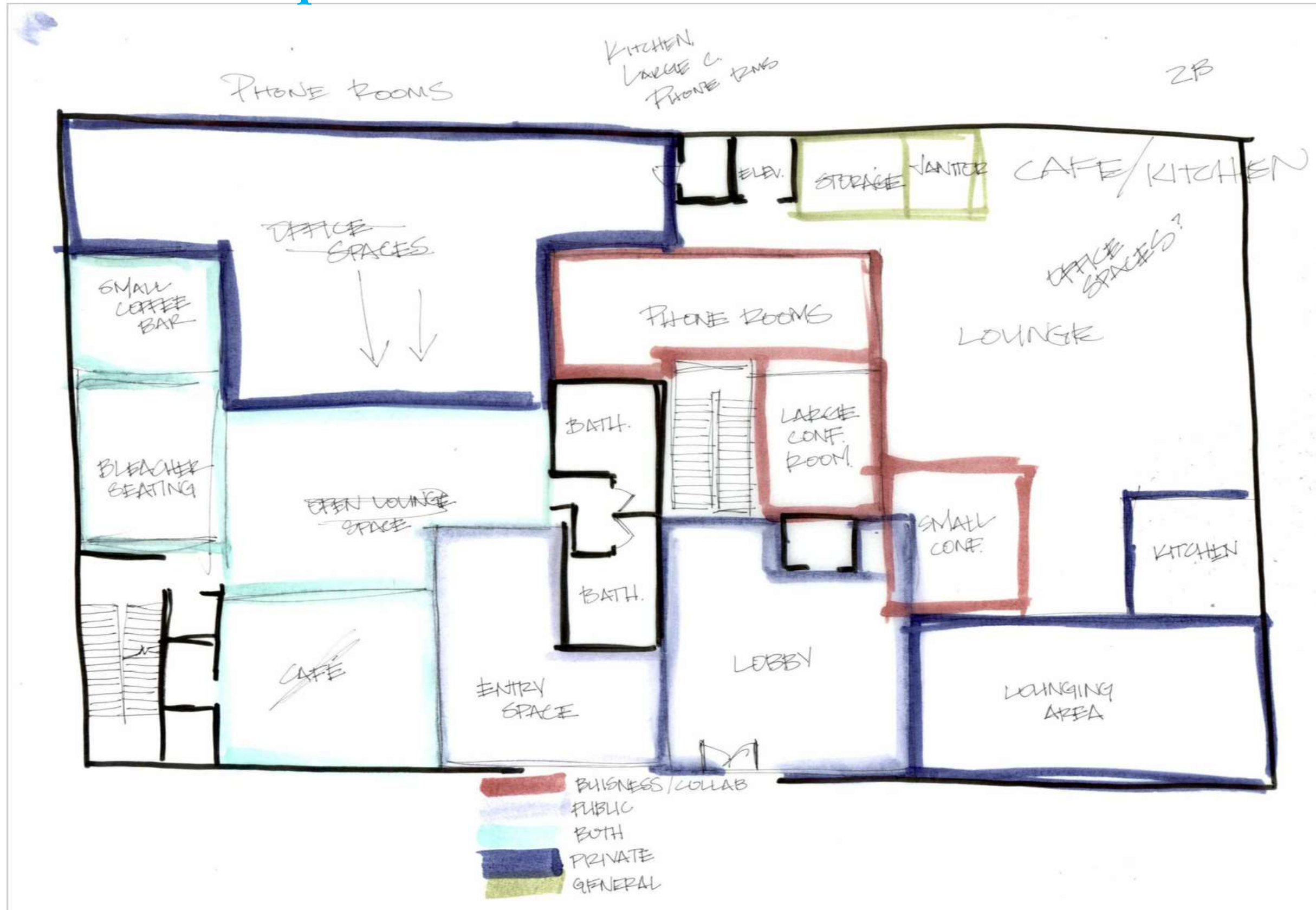
Block Diagram – First Floor **Option 1**



Block Diagrams – Second Floor **Option 1:**



Block Diagram – First Floor **Option 2:**



Block Diagram – Second Floor **Option 2:**

