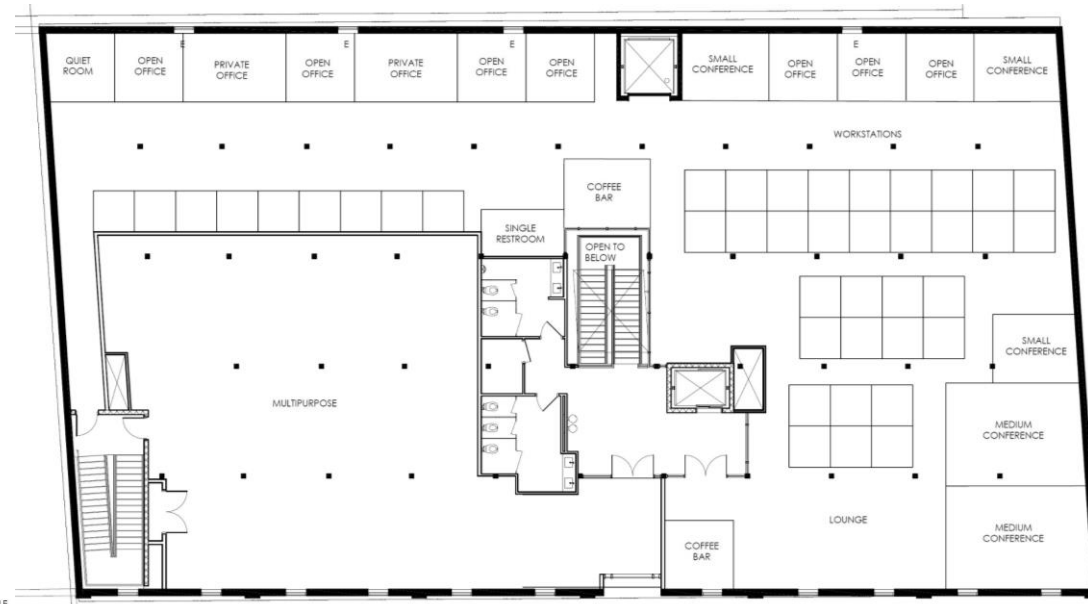
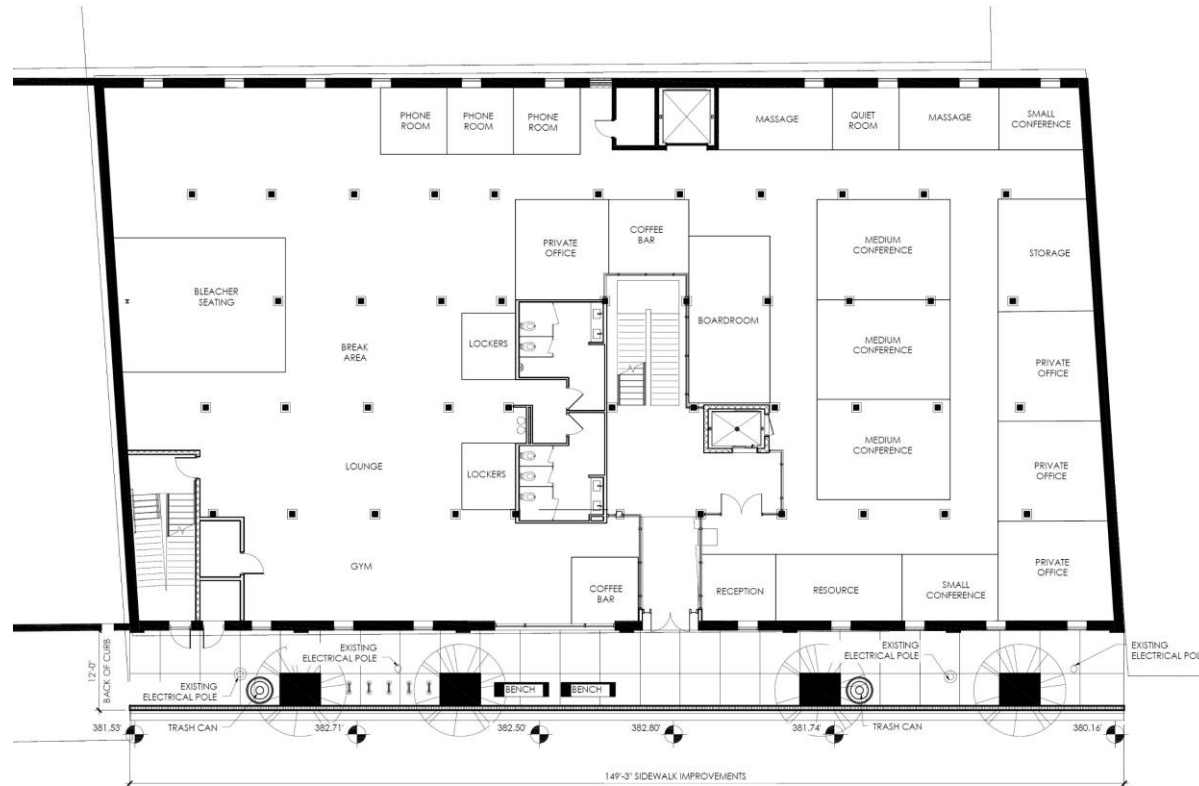




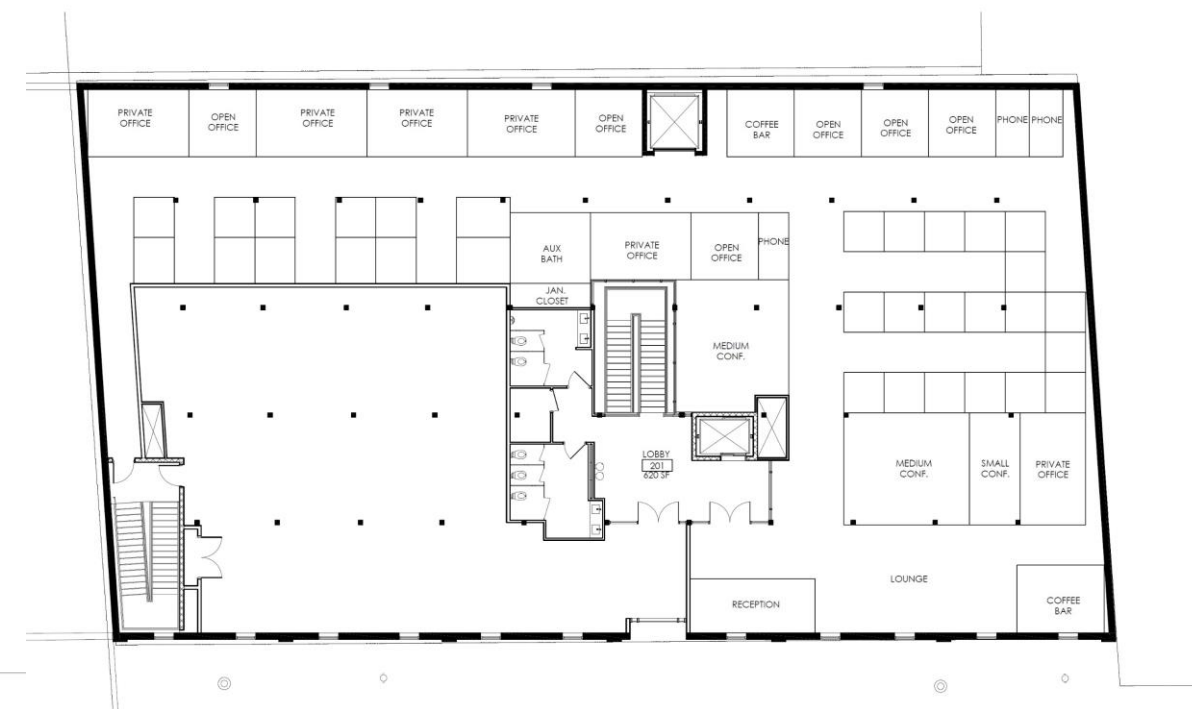
FUSION

Jacinta Cofield
Georgina Hendricks
Sara Williamson

ENCLOSED SPACES ALONG PERIMETER WINDOWS



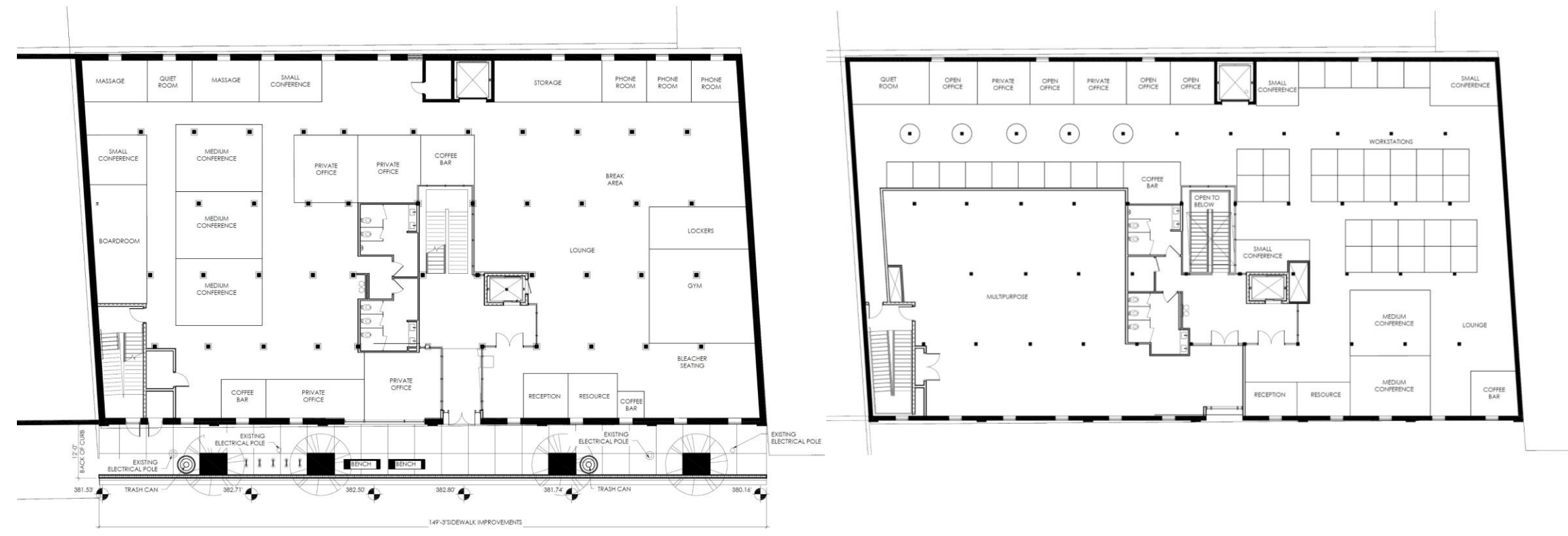
ENCLOSED SPACES CLUSTERED IN CENTER OF PLAN



ENCLOSED SPACES SCATTERED THROUGHOUT PLAN

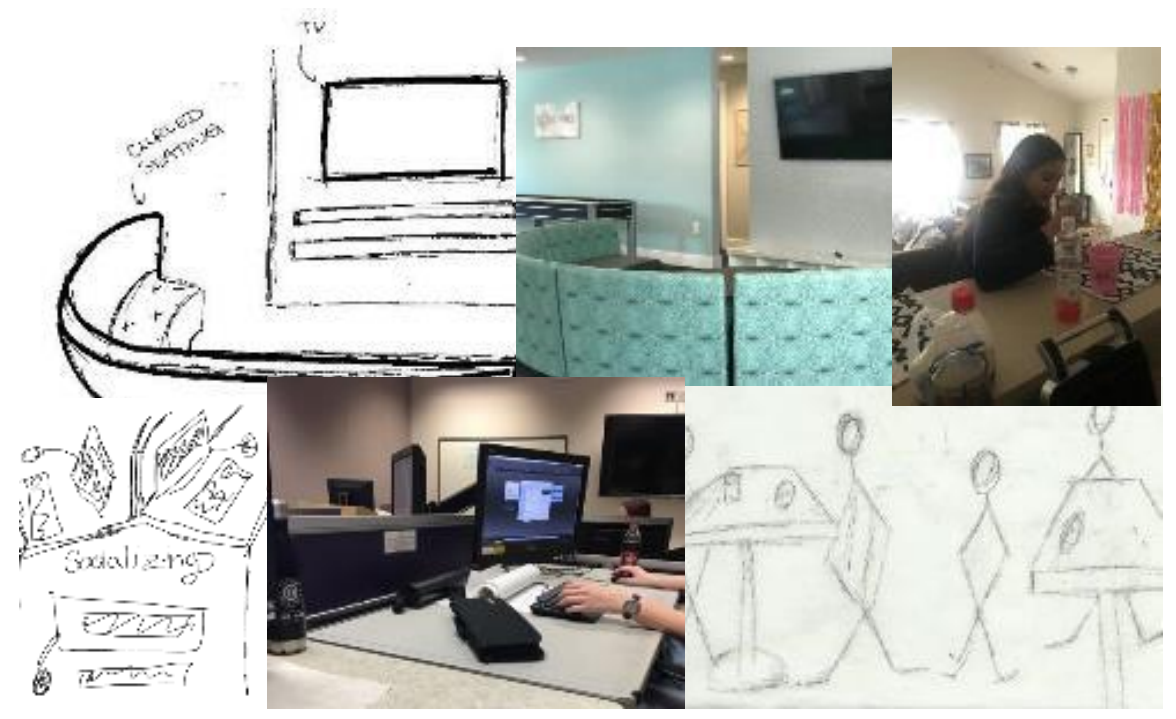
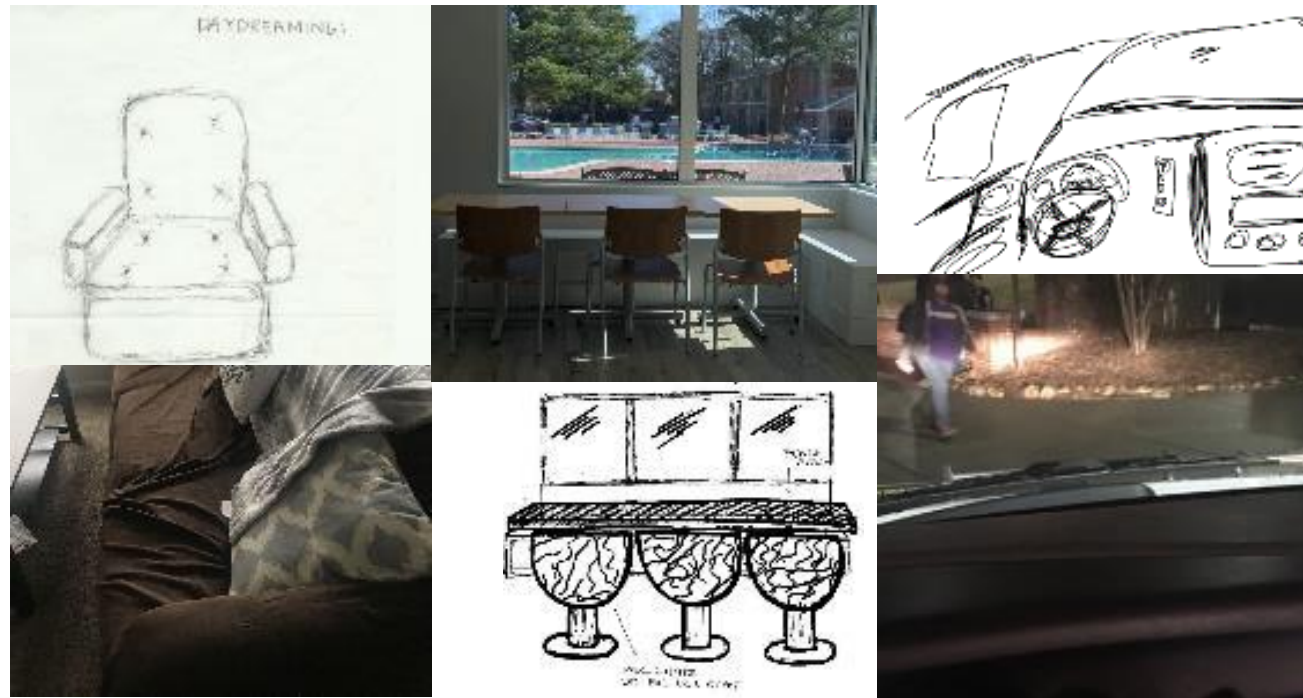


COMBINATION OF PLANS



INTENSE FOCUS WORK & DIFFUSE FOCUS WORK

GROUP PLANNING / MEETING SPACE



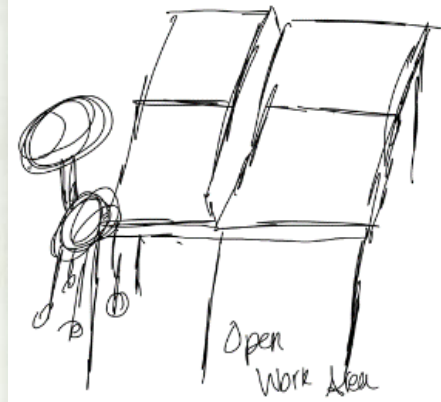
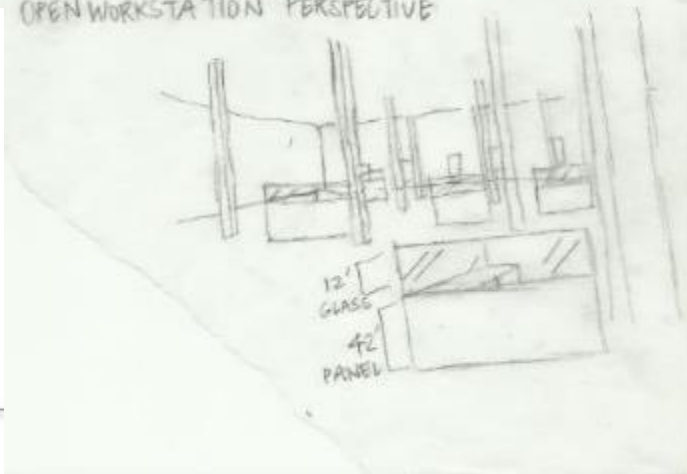
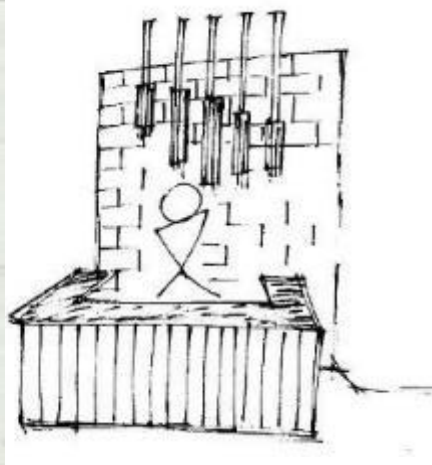
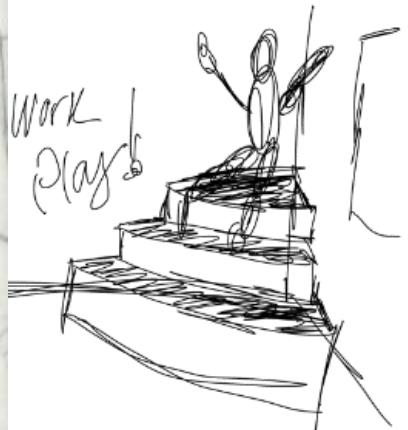
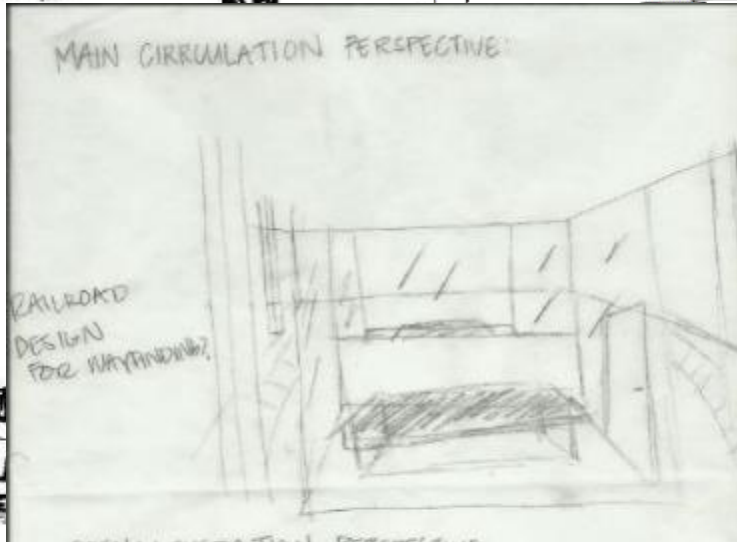
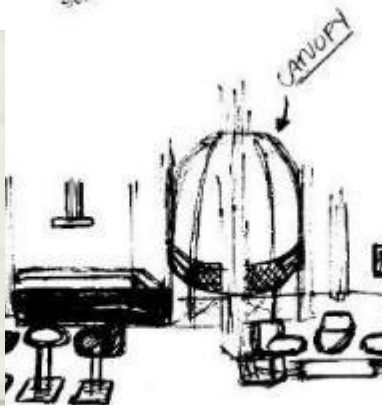
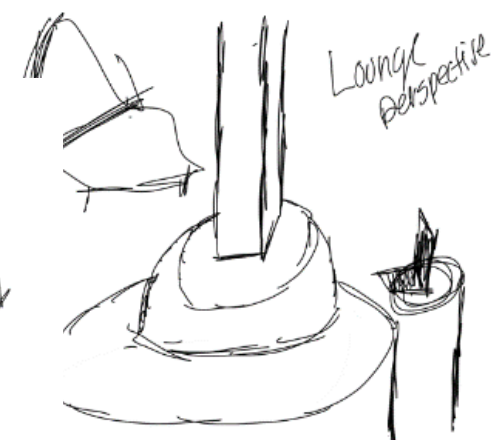
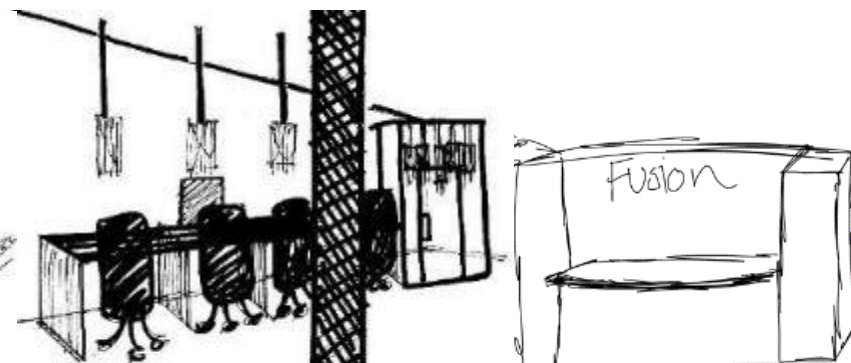
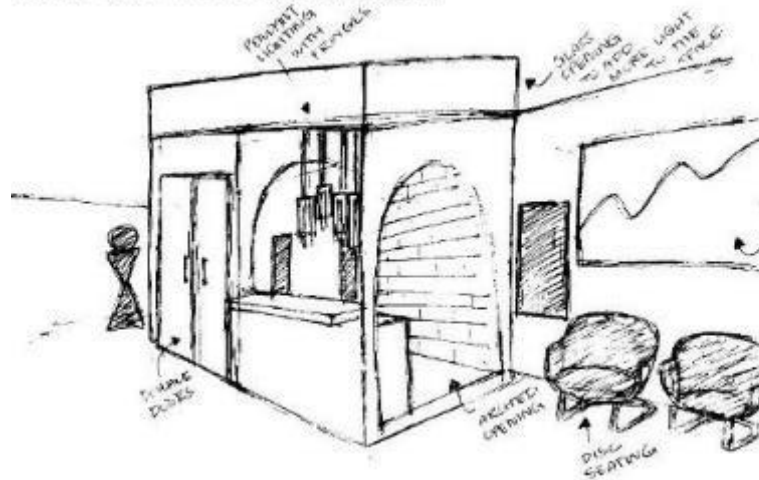
DAYDREAMING

SOCIALIZING

MUSIC MODEL INSPIRED SKETCHES



RECEPTION + RESOURCE ROOM



This modern color palette is used to create the jazz vibe from the 1930's. In a mix of neutral and pastel colors, with accents of gold and the color black, the space will exude The Jazz Age. The Jazz Age defined the innovation of modernity and urbanity. With the mesh of the rustic brick, wooden floor, and white baseboards, the space provides a traditional historic background.

The American Underground in Durham, North Carolina and New York's City Highline Park were incorporated in the design of Ying Yang. By implementing darker colors in the space, The American Underground will be represented. With the use of glass, some spaces will represent New York City's Highline park. Ying Yang will fuse the two in a space that hopes to bring the community together.



The Jazz Age explored simple shapes and minimalistic decoration that defined modernism. The Jazz Age was influenced by a fine art movement, Cubism. Cubism referred to abstracted and fragmented shapes or objects. To incorporate cubism, geometric shapes are used. The Jazz Age represented sharp contrasts and rhythm. A sense of The Jazz Age will be perceived with darker hues by giving the feel of a club in the 1920's.

