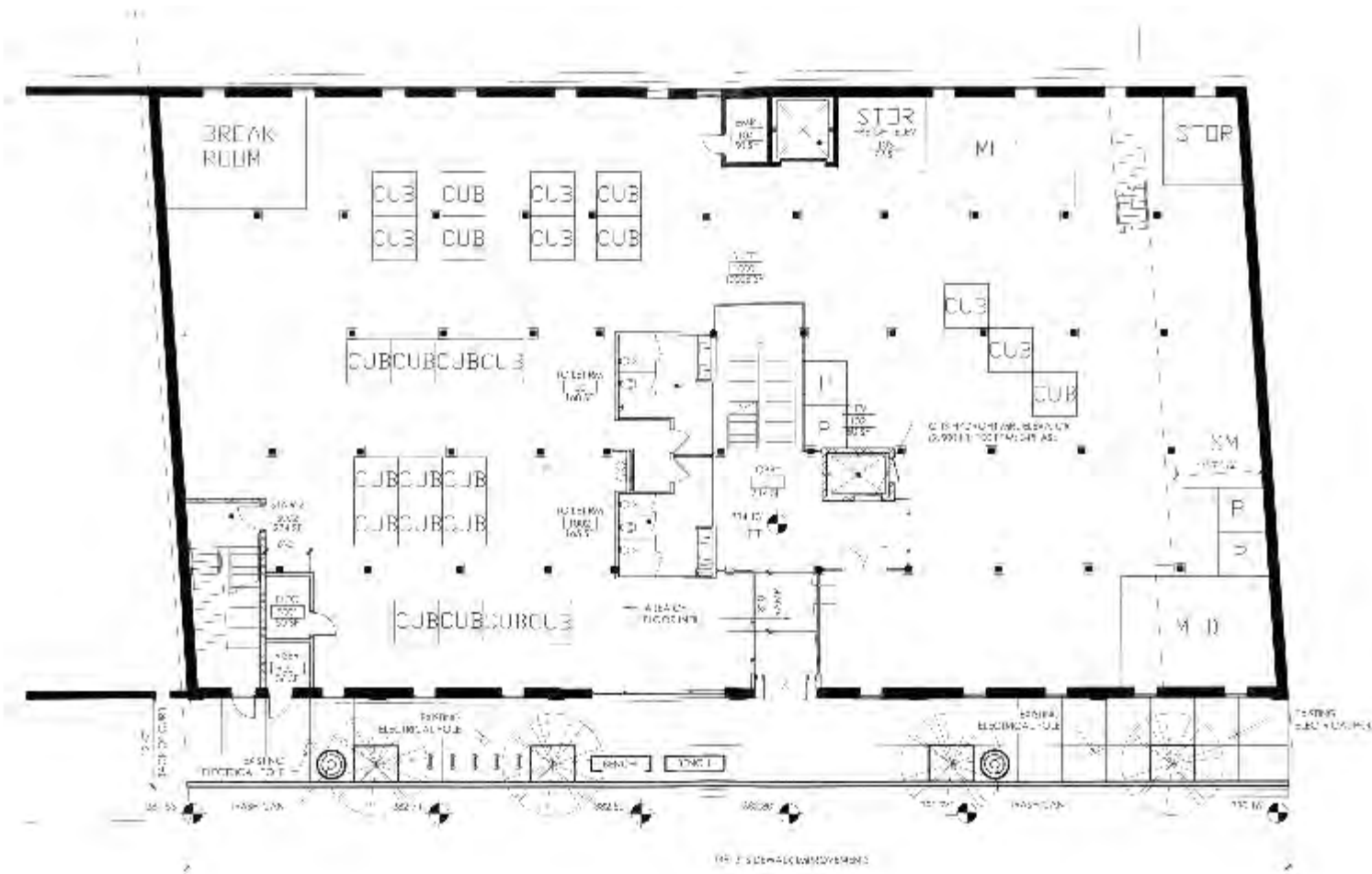
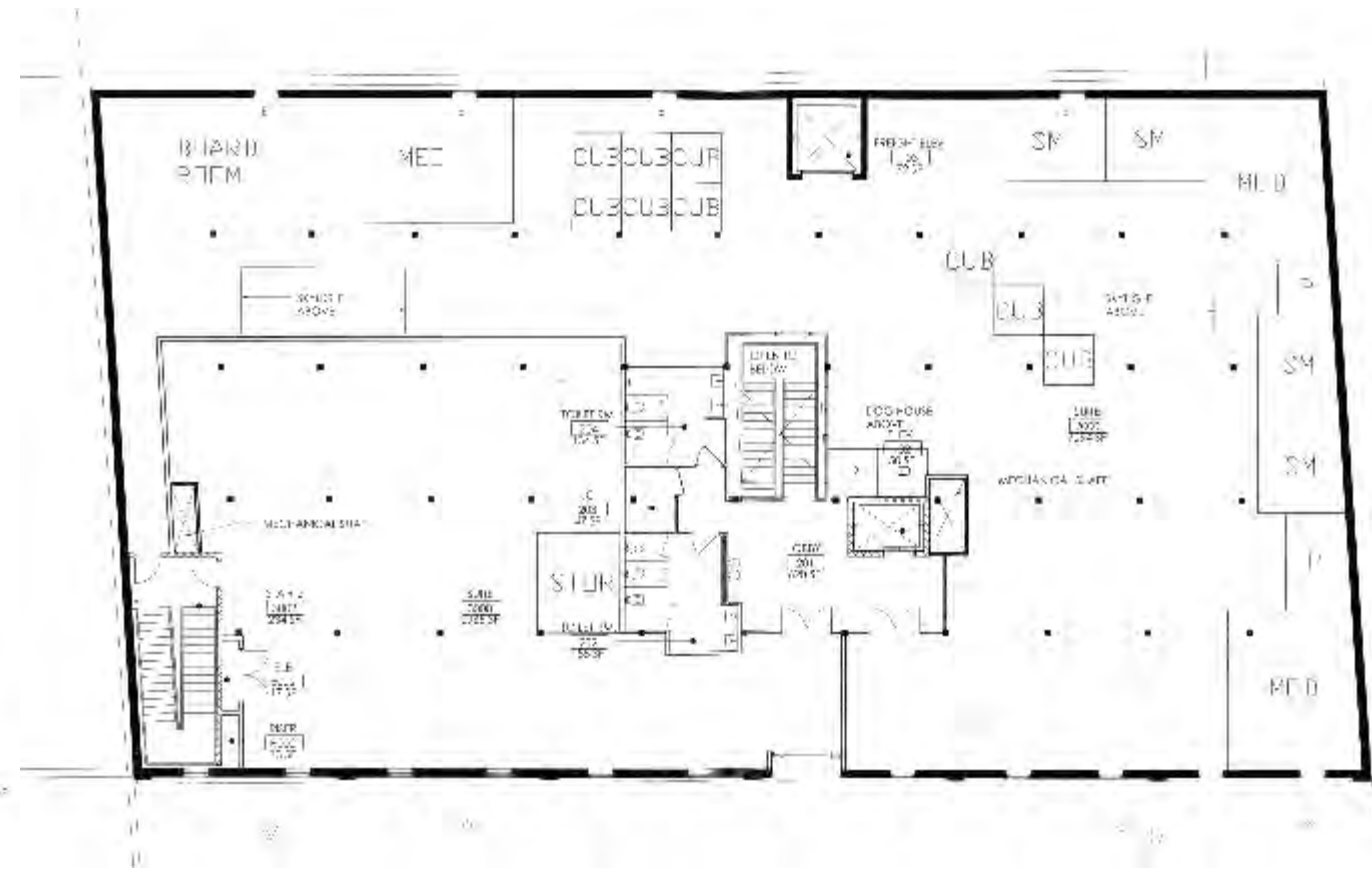


# SCHEMATIC PLANS:

ENCLOSED SPACES ALONG PERIMETER WINDOWS



LEVEL 1

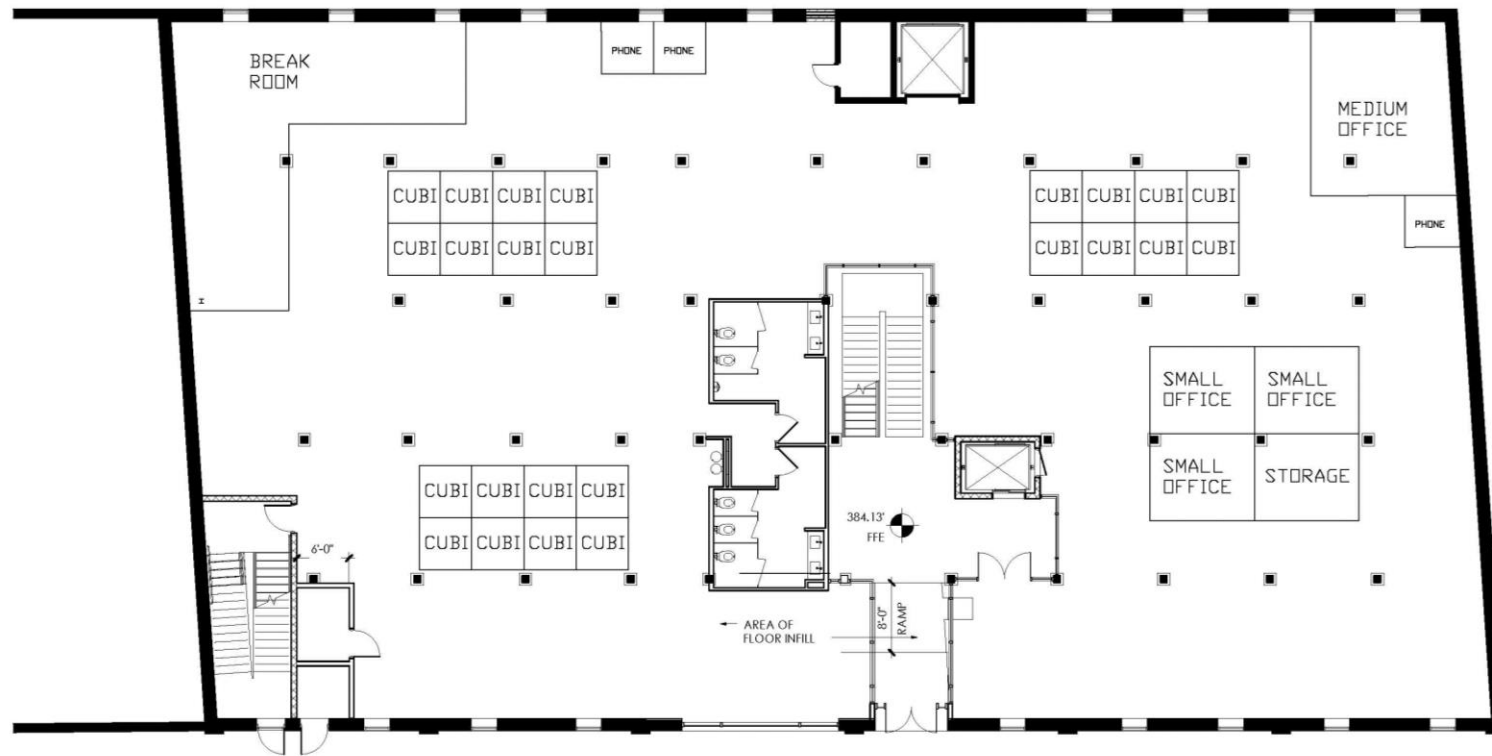


LEVEL 2



# SCHEMATIC PLANS:

ENCLOSED SPACES CLUSTERED IN CENTER OF PLAN



LEVEL 1

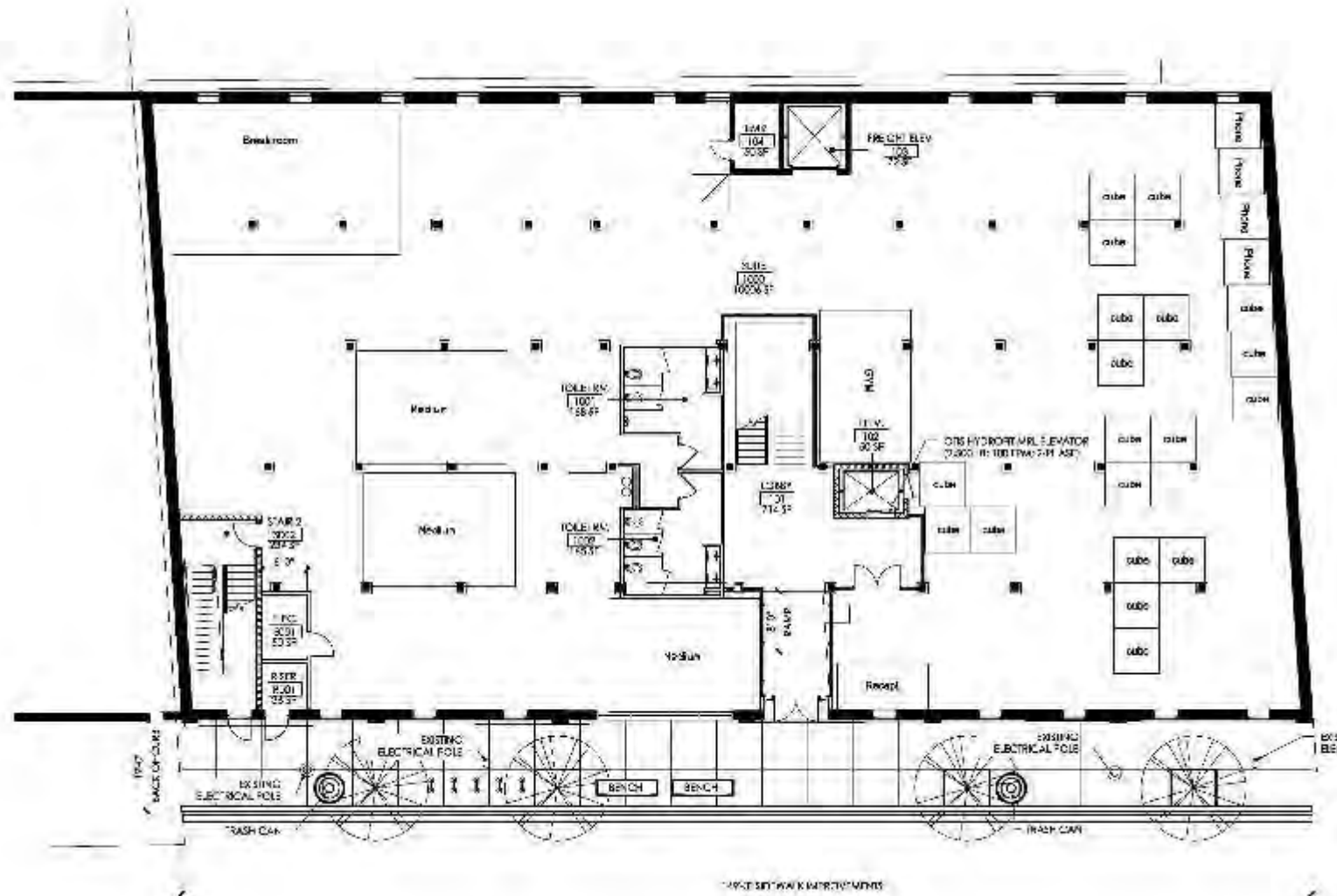


LEVEL 2

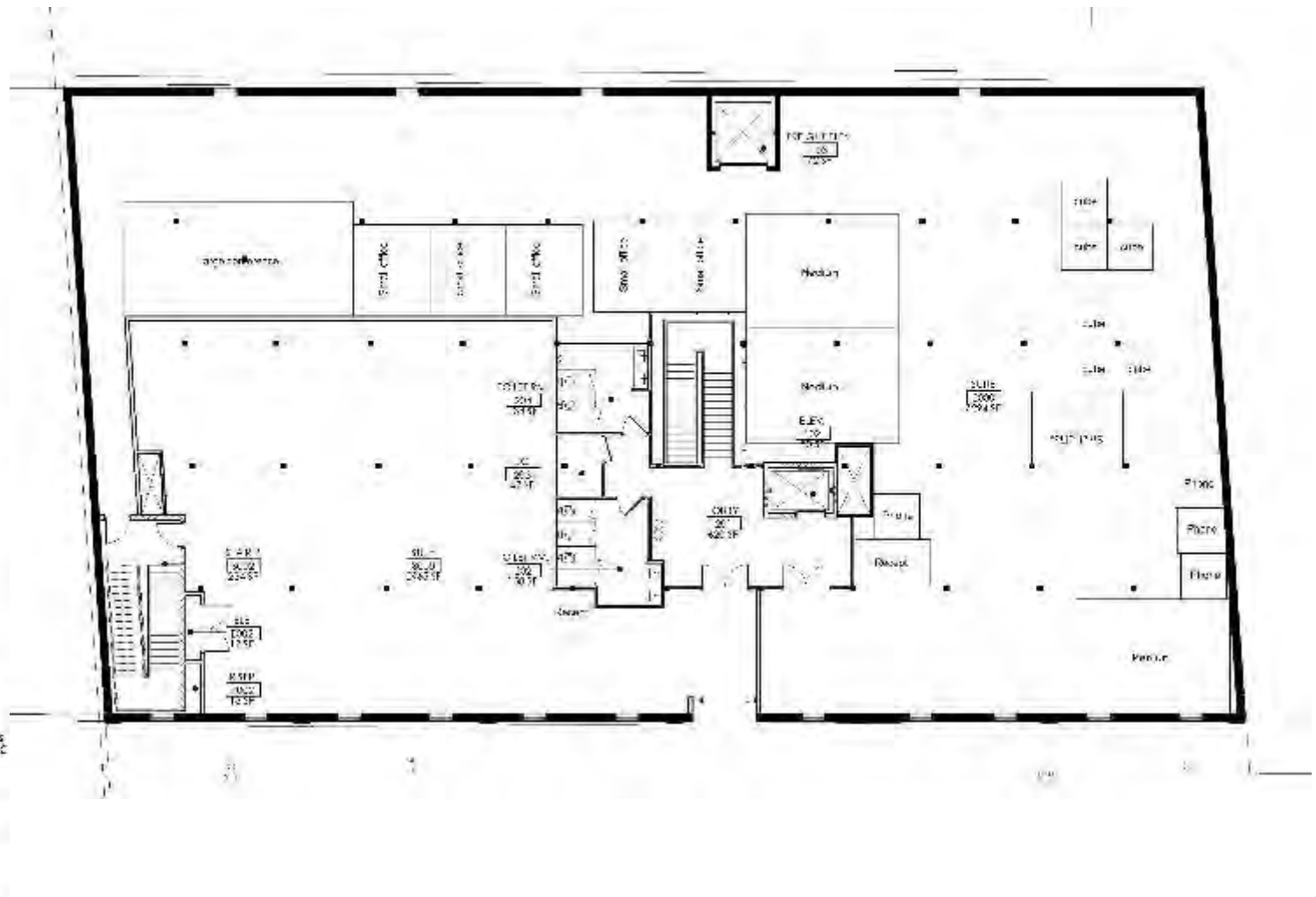


# SCHEMATIC PLANS:

ENCLOSED SPACES SCATTERED THROUGHOUT PLAN



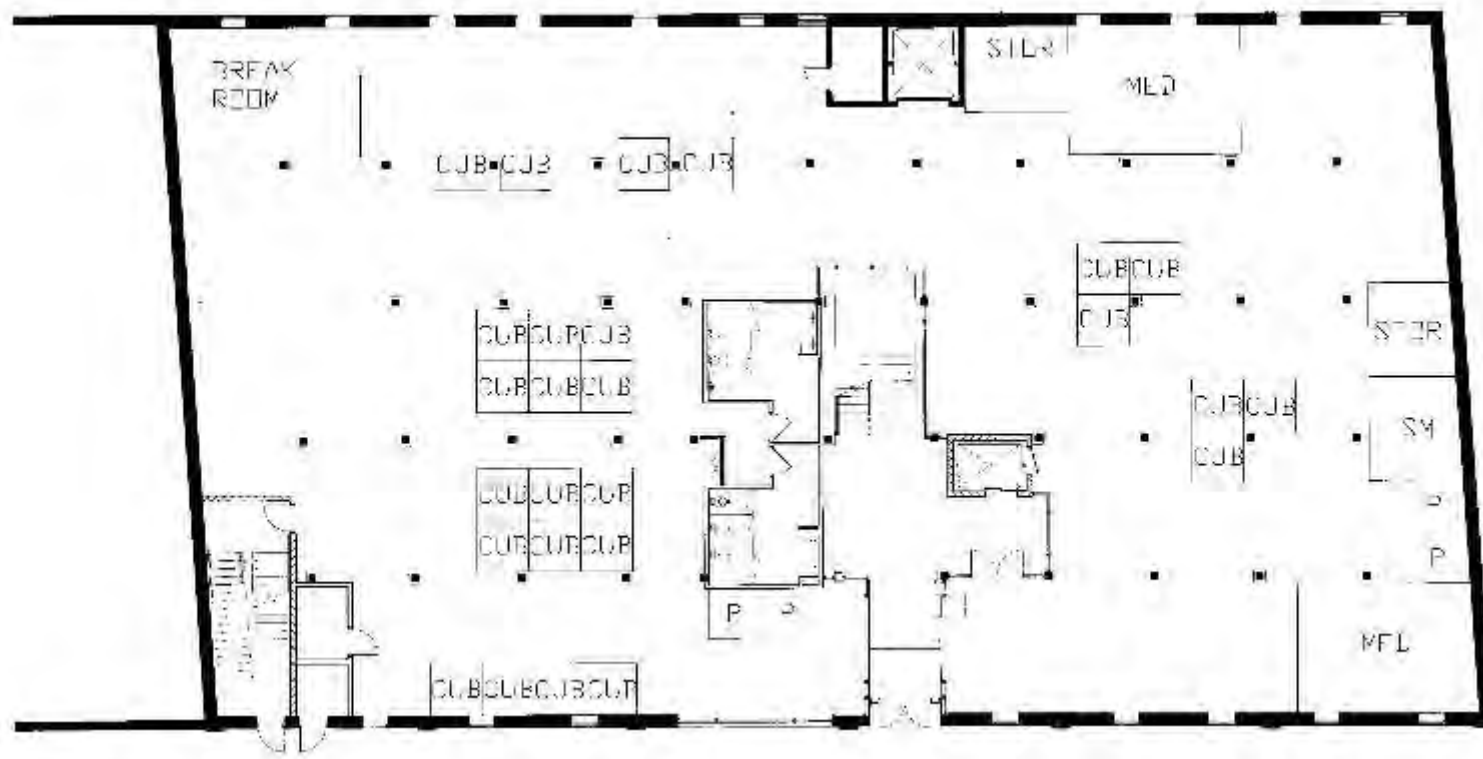
LEVEL 1



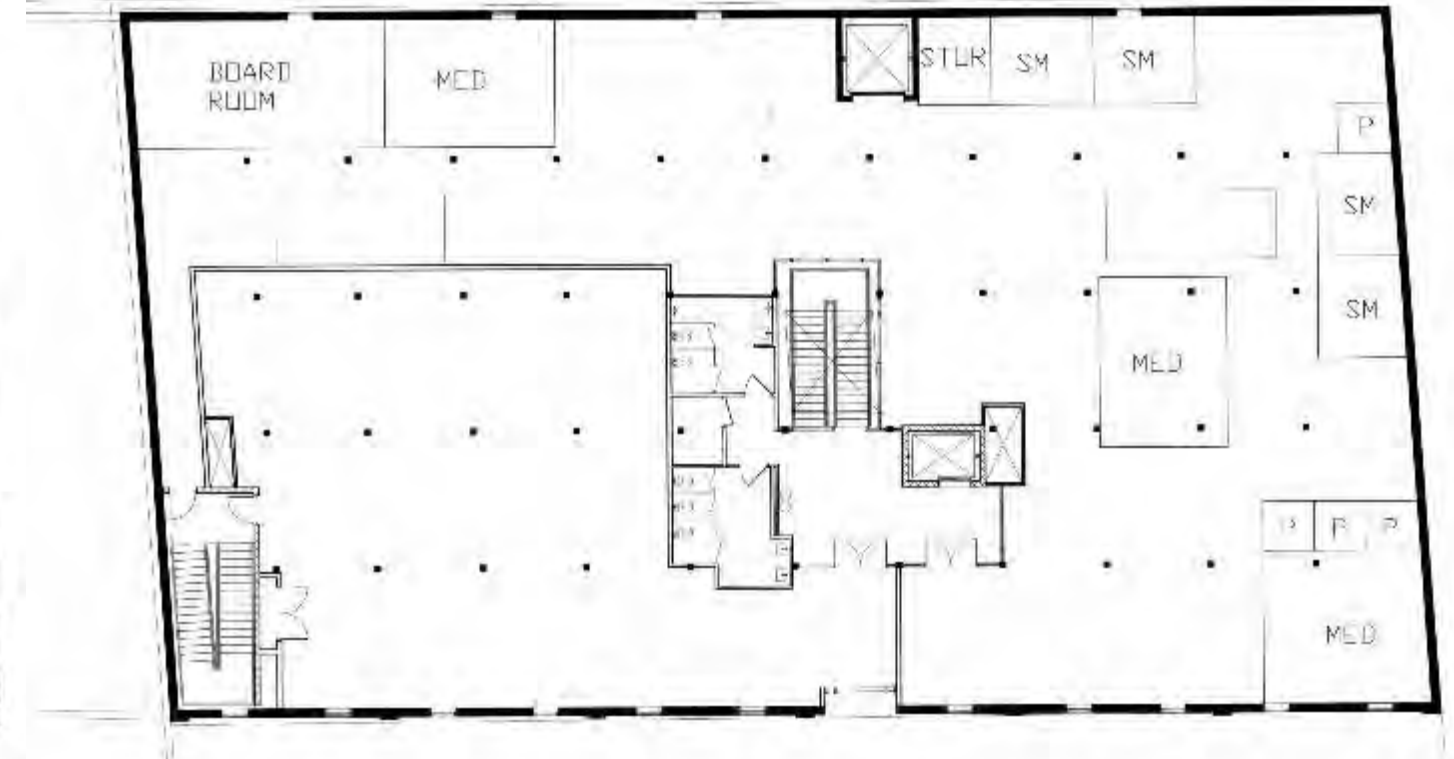
LEVEL 2



# SCHEMATIC PLANS: FINAL VERSION



LEVEL 1

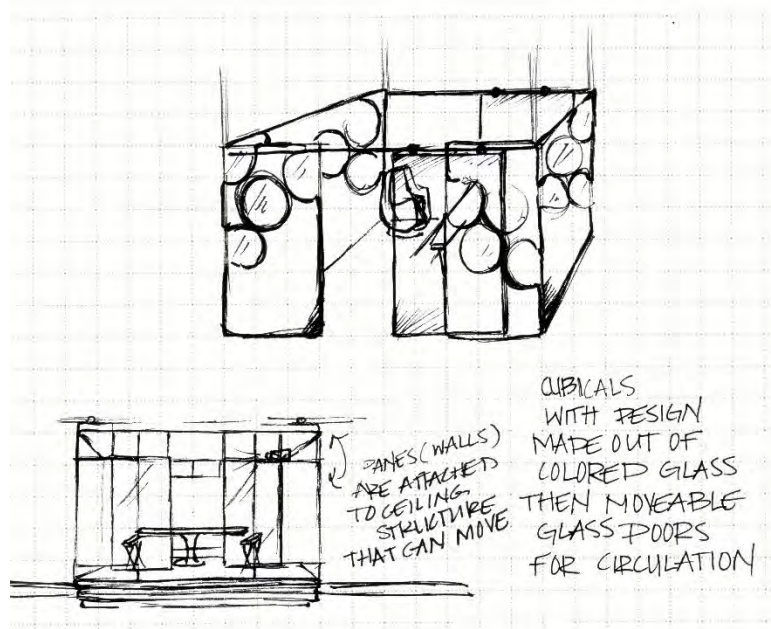


LEVEL 2

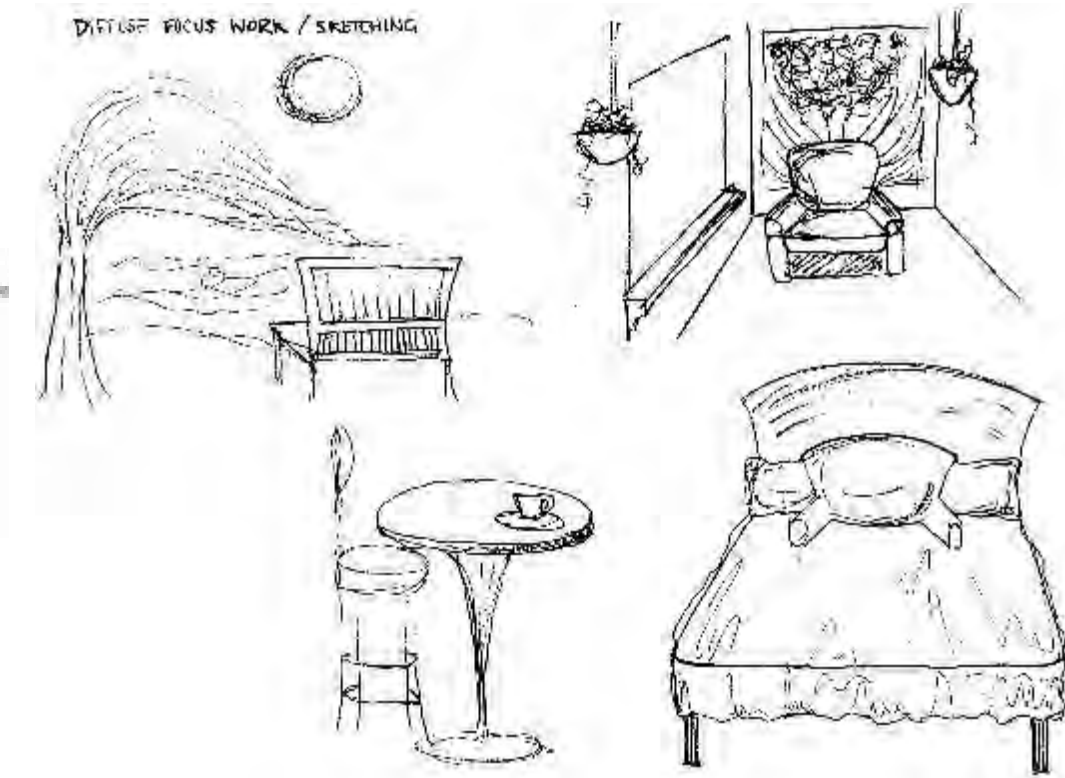
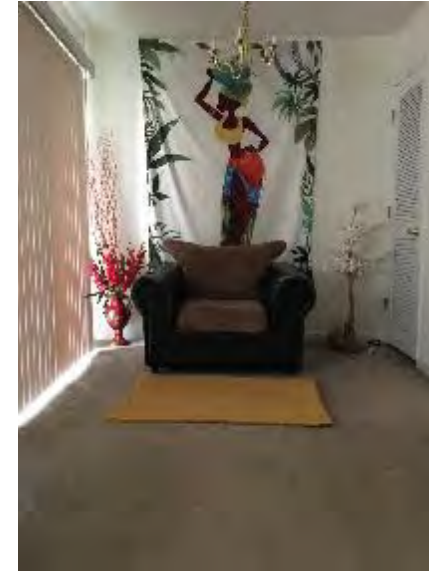


# SPATIAL CONCEPT SKETCHES:

## INTENSE FOCUS WORK



## DIFFUSE FOCUS WORK

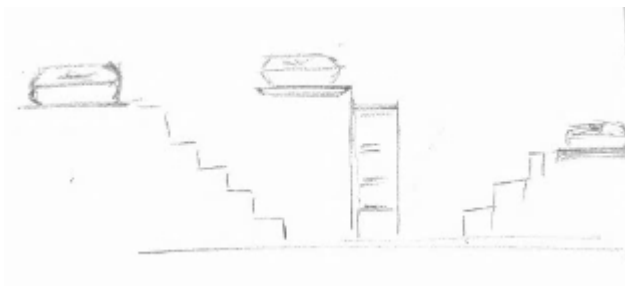
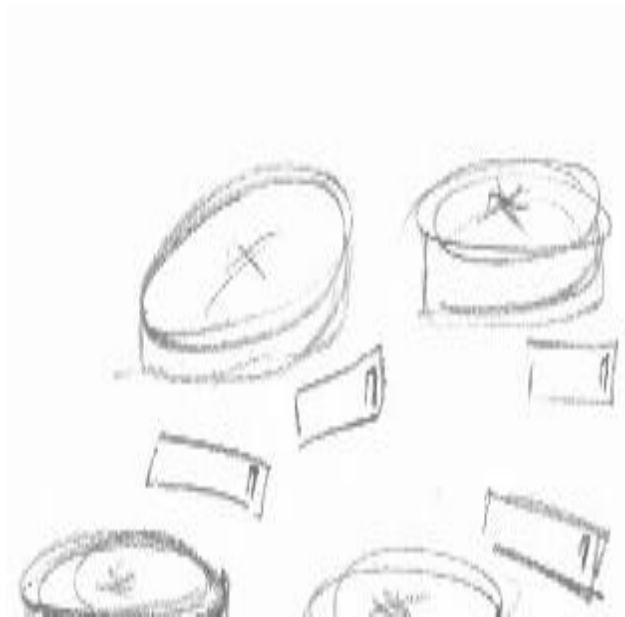
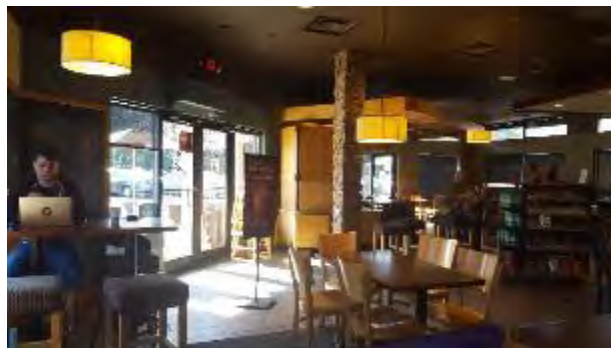


## DAYDREAMING



# SPATIAL CONCEPT SKETCHES:

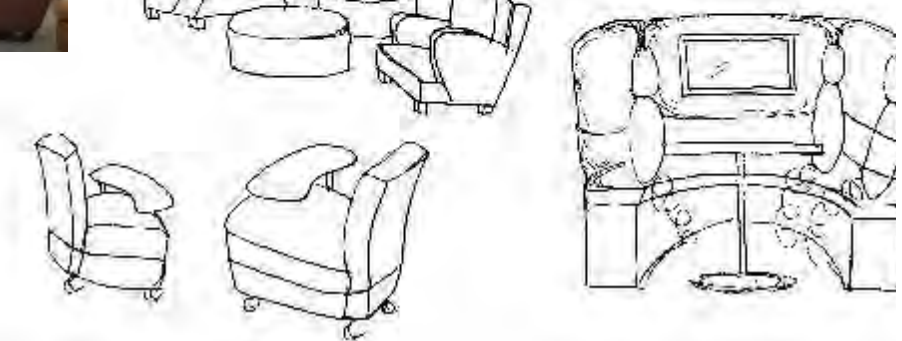
## SOCIALIZING



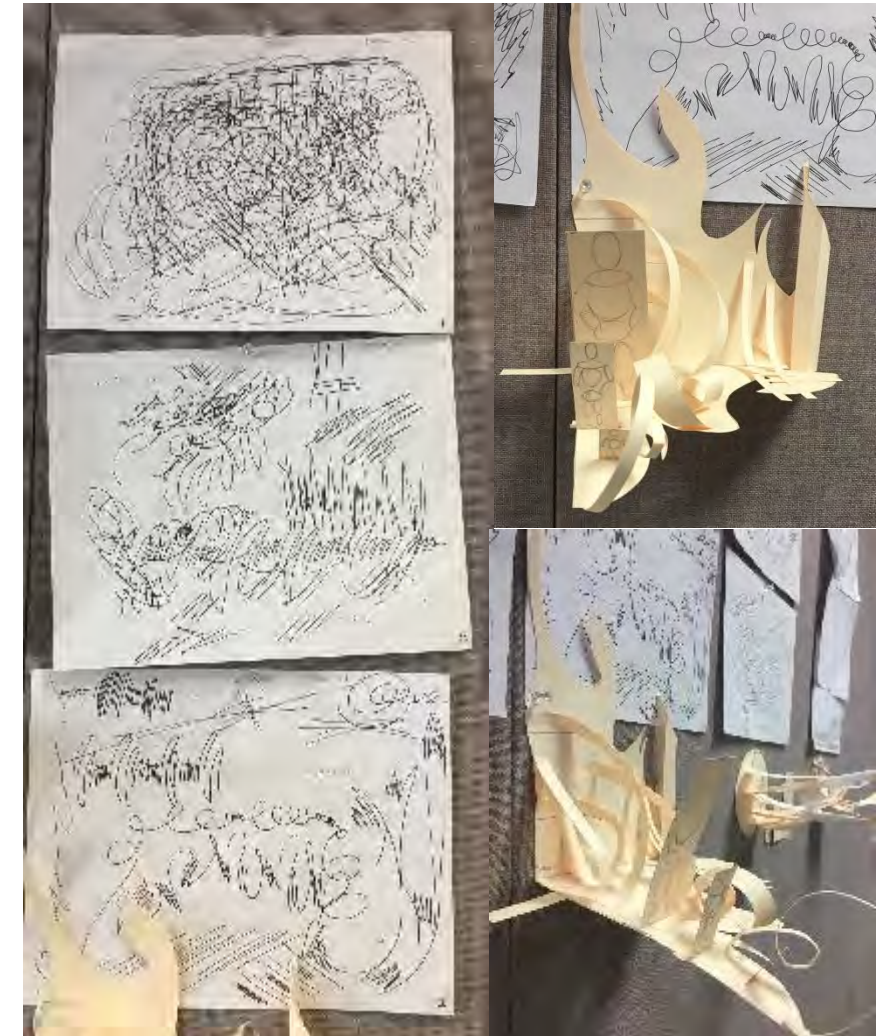
## GROUP PLANNING/ MEETING



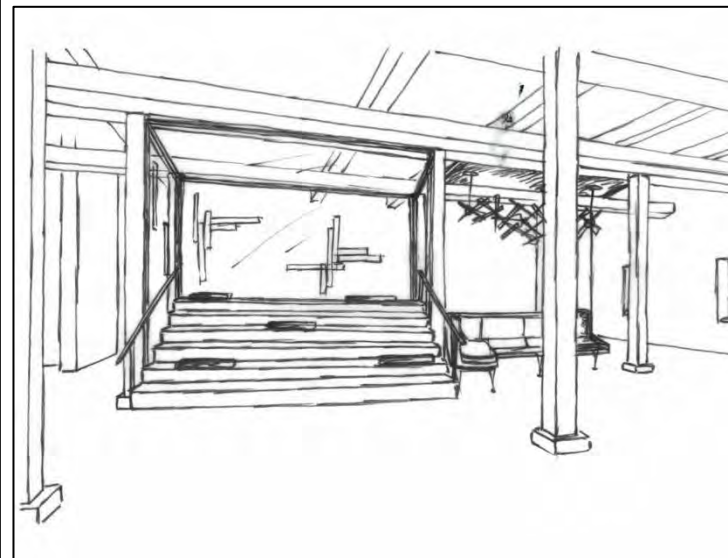
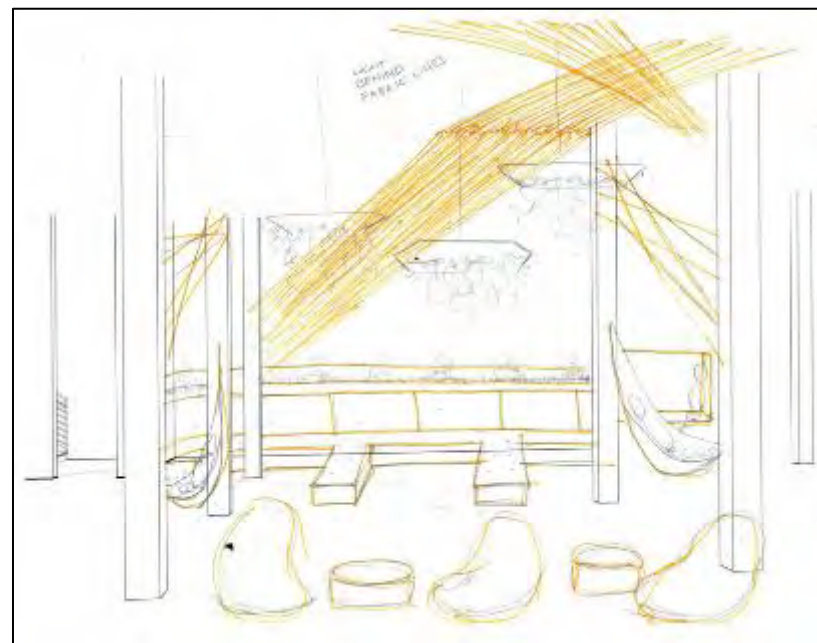
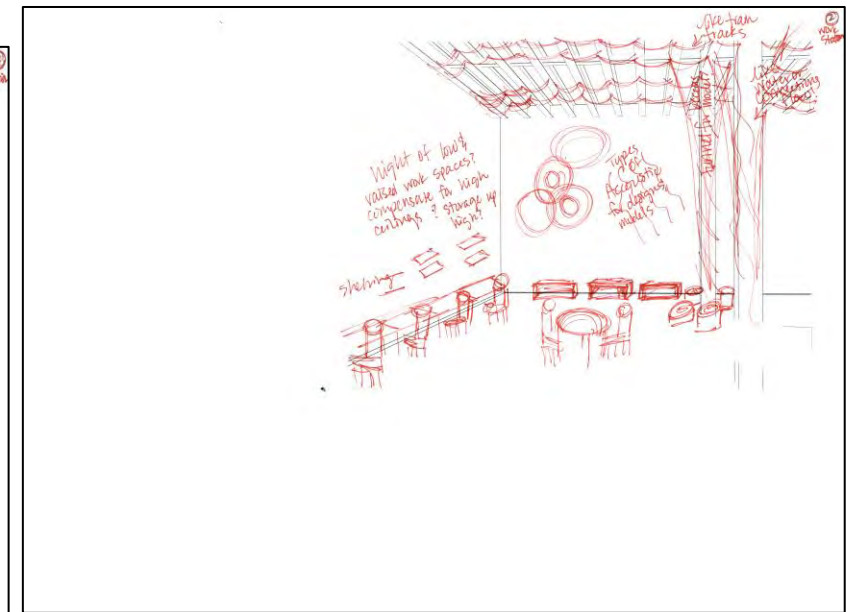
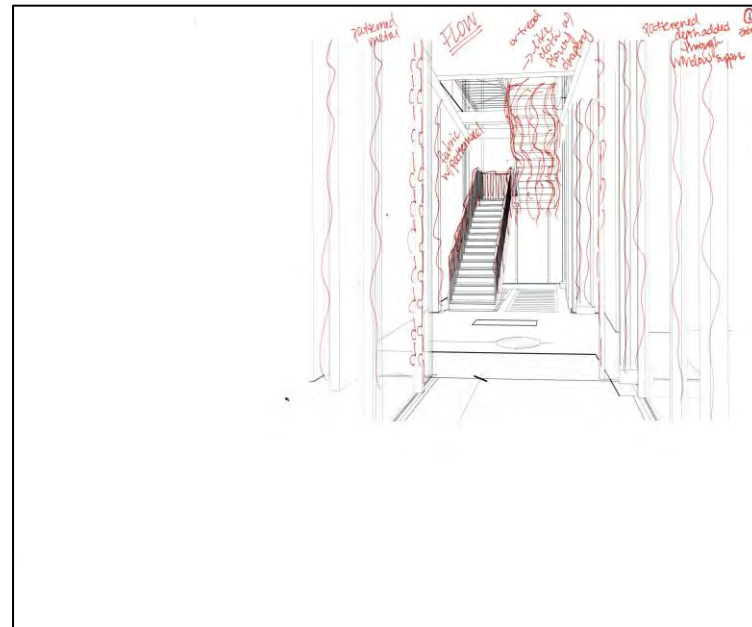
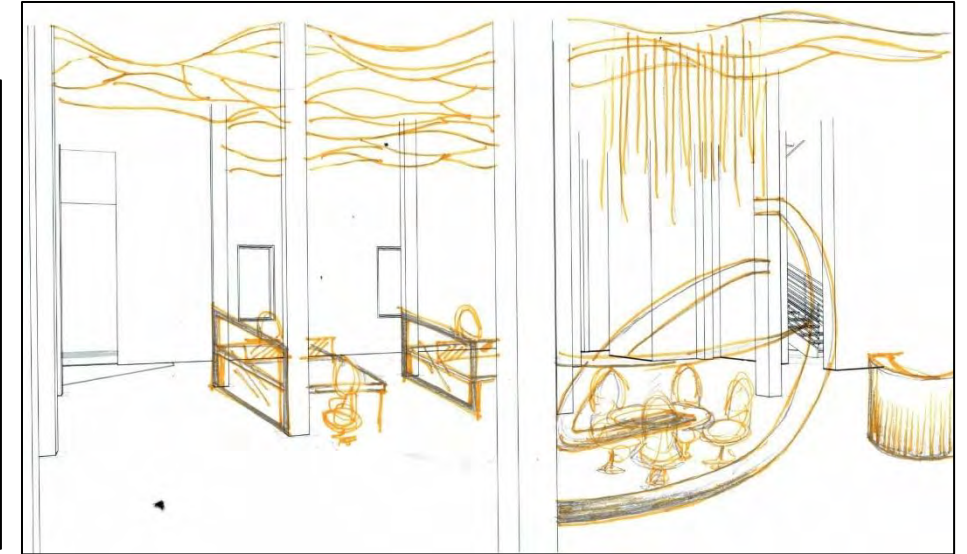
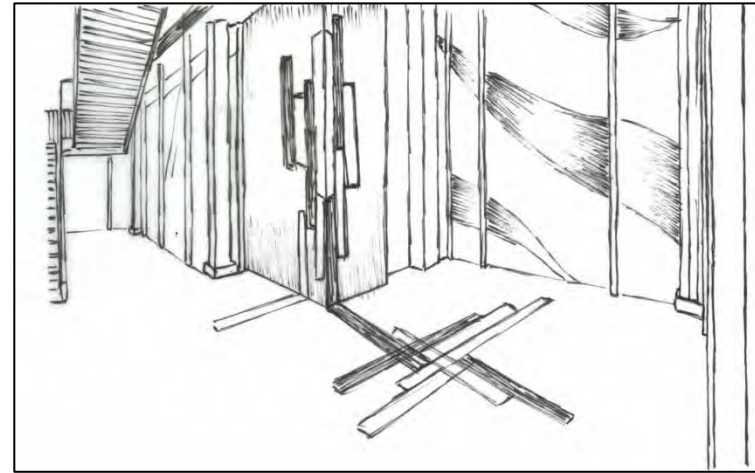
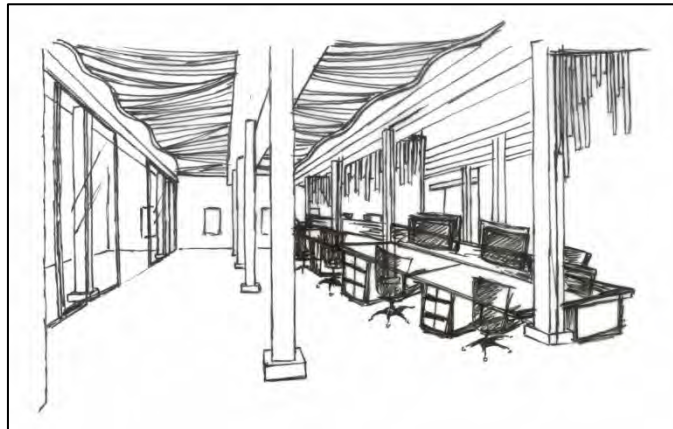
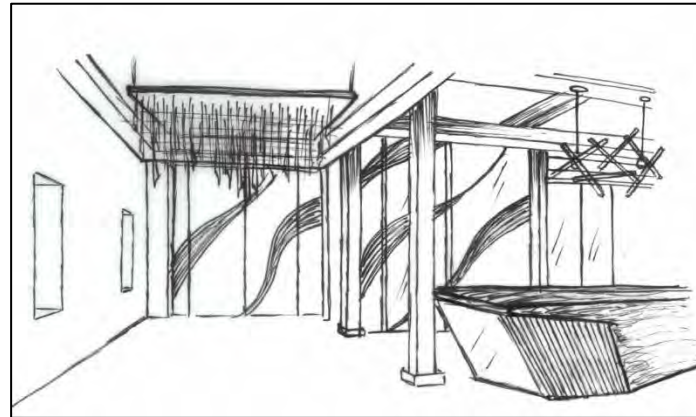
PLANNING/MEETING



# EXPRESSIVE 3D MODELS



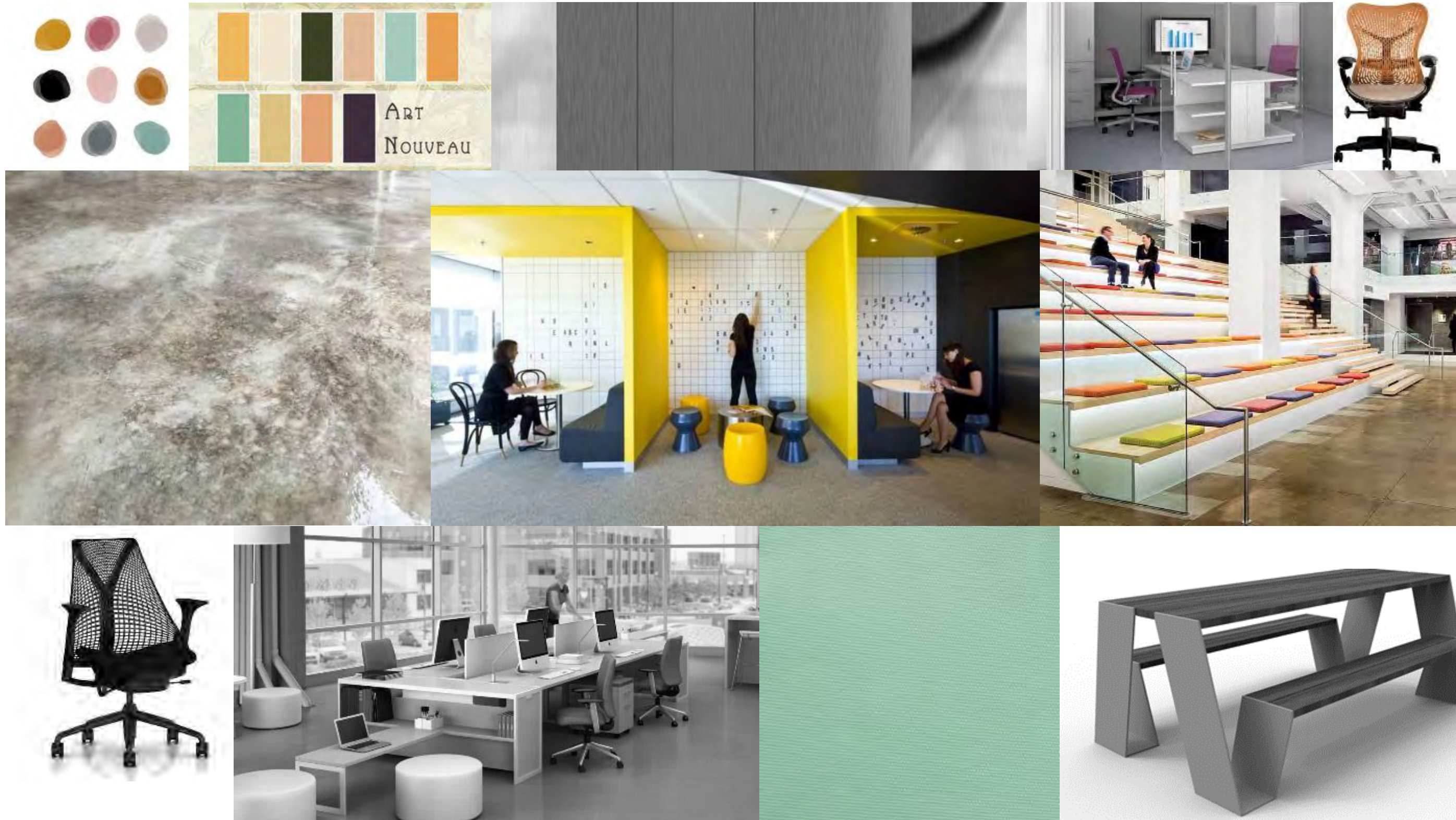
# PERSPECTIVE SKETCHES





# FURNITURE & FINISHES

The use of line in the furniture and finishes creates the flow and movement throughout the space.  
The colors coordinate with individual work areas. They also help encourage a sense of direction throughout the space.



# LIGHTING

The line work of the lighting fixtures is horizontal compared to the perpendicular directions of the vertical columns.

The lights also display a sense of flow compared to the flow and direction of the city's railway and the flow of the city in general.

