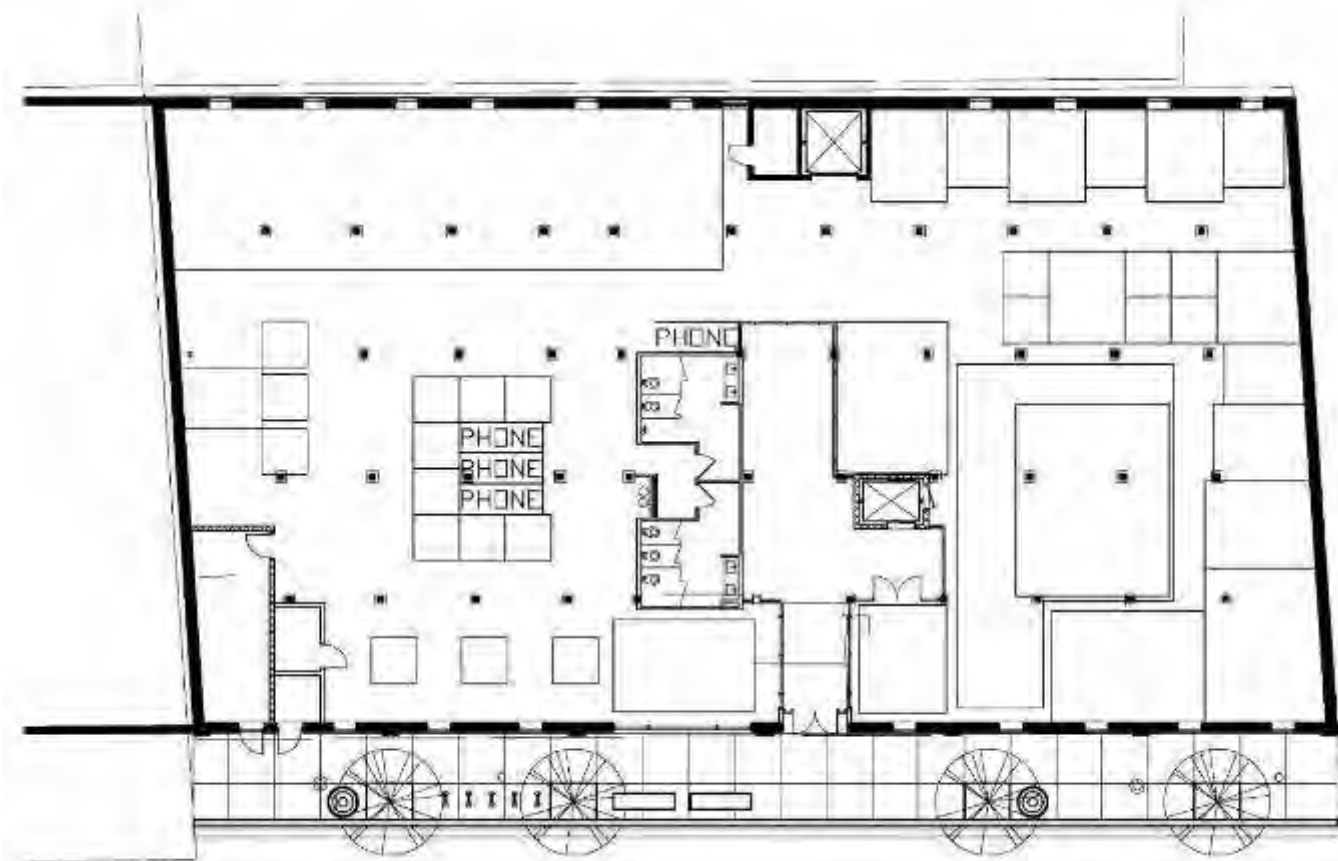


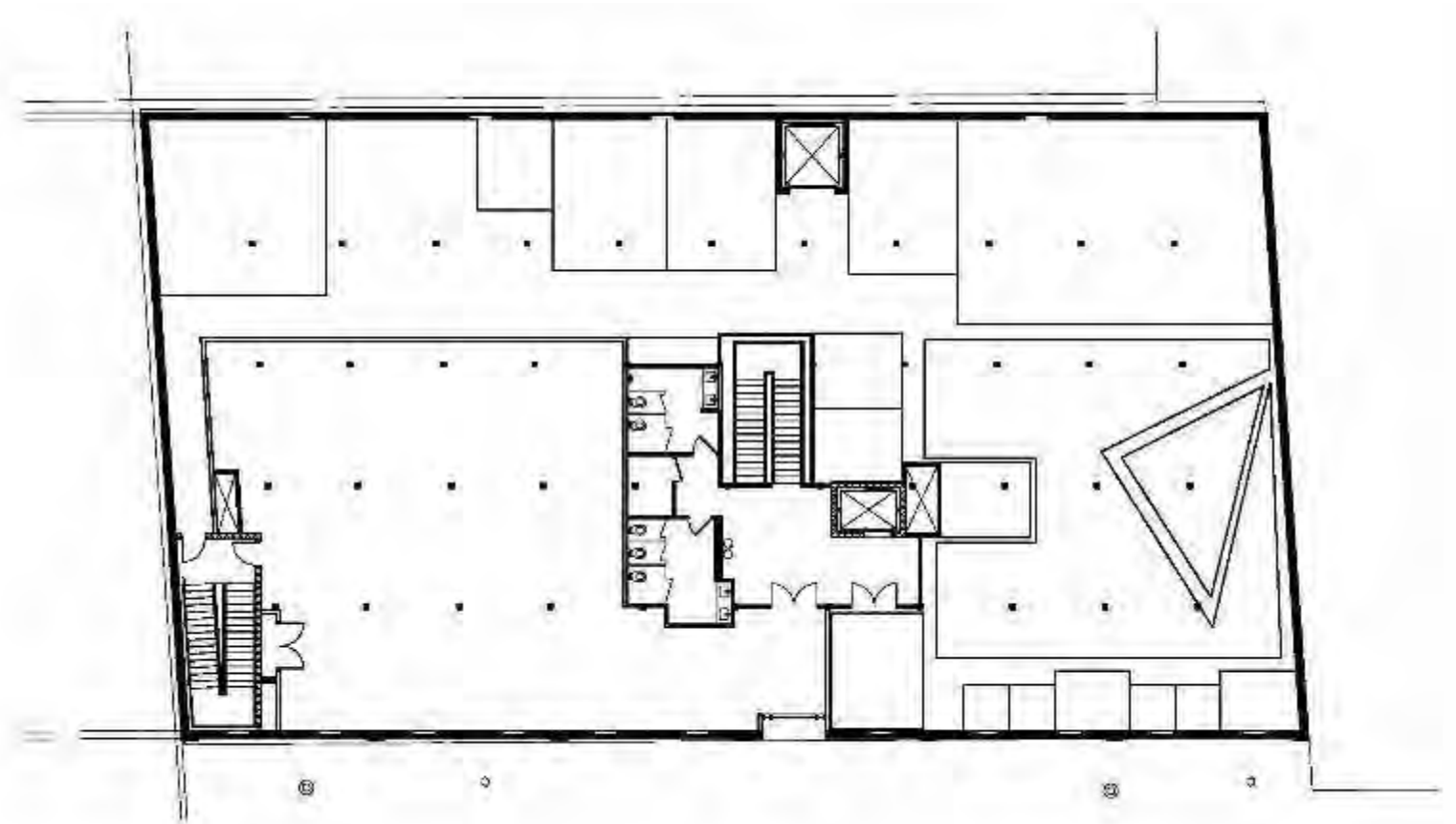
SCHEMATIC PLANS

PLAN 1: ENCLOSED SPACES ALONG PERIMETER WINDOWS

FIRST FLOOR



SECOND FLOOR

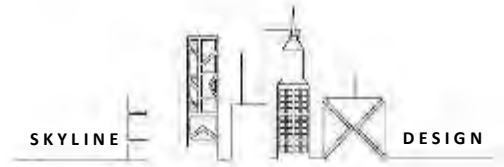


Elizabeth Sechler

Rae Melvin

Taryn Pickering

SCHEMATIC PLANS



PLAN 2: ENCLOSED SPACES CLUSTERED IN CENTER OF PLAN

FIRST FLOOR



SECOND FLOOR

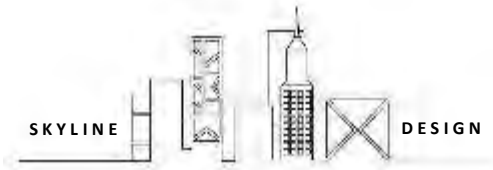


Elizabeth Sechler

Rae Melvin

Taryn Pickering

SCHEMATIC PLANS



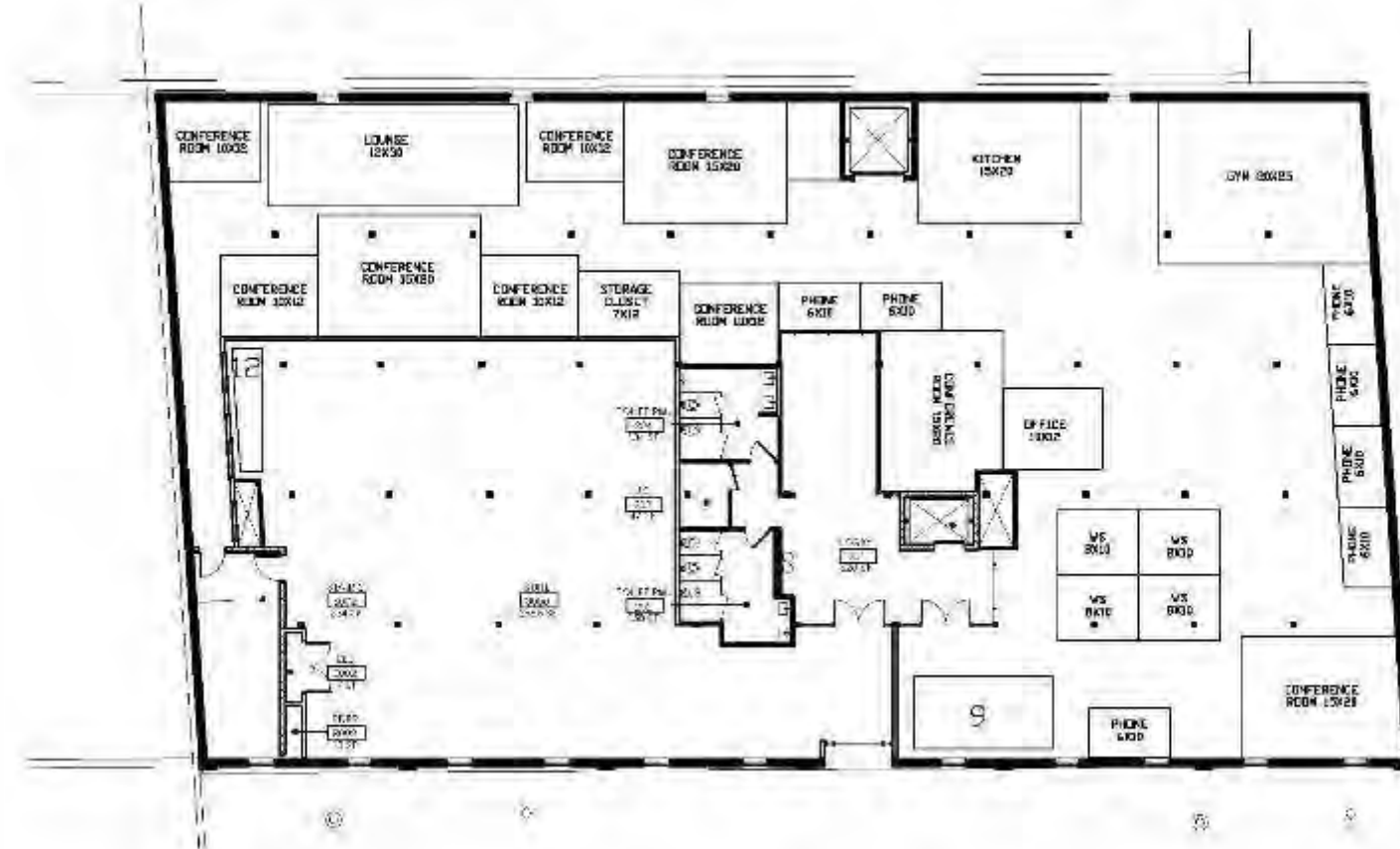
PLAN 3: ENCLOSED SPACES SCATTERED THROUGHOUT PLAN

FIRST FLOOR



Elizabeth Sechler

SECOND FLOOR



Rae Melvin

Taryn Pickering

SCHEMATIC PLANS

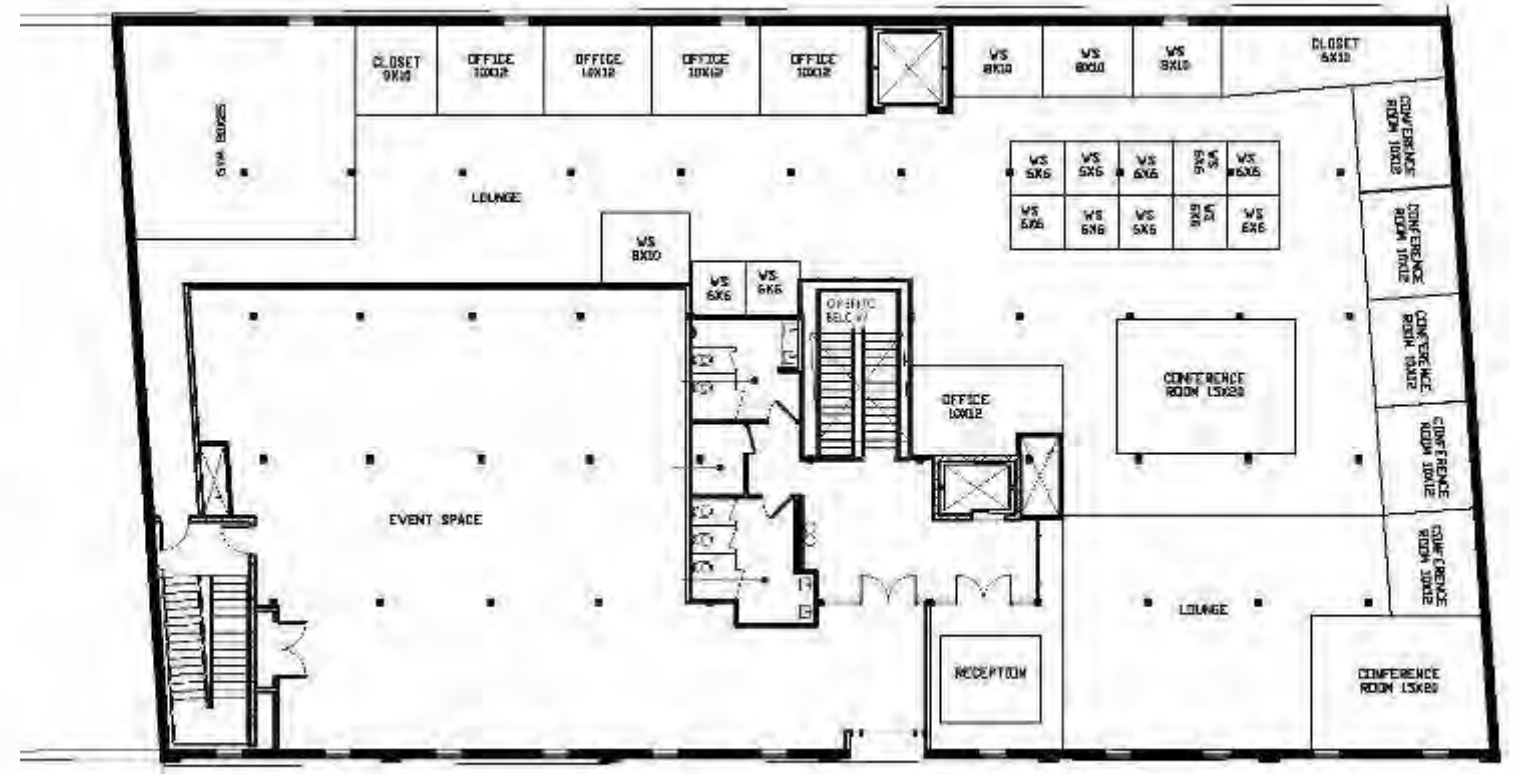
PLAN 4: COMBINED IDEAS

FIRST FLOOR



Elizabeth Sechler

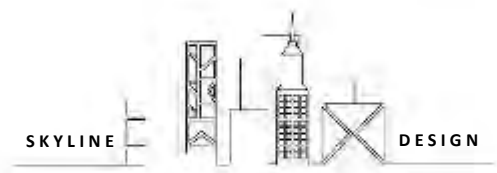
SECOND FLOOR



Rae Melvin

Taryn Pickering

SCHEMATIC DESIGN SKETCHES



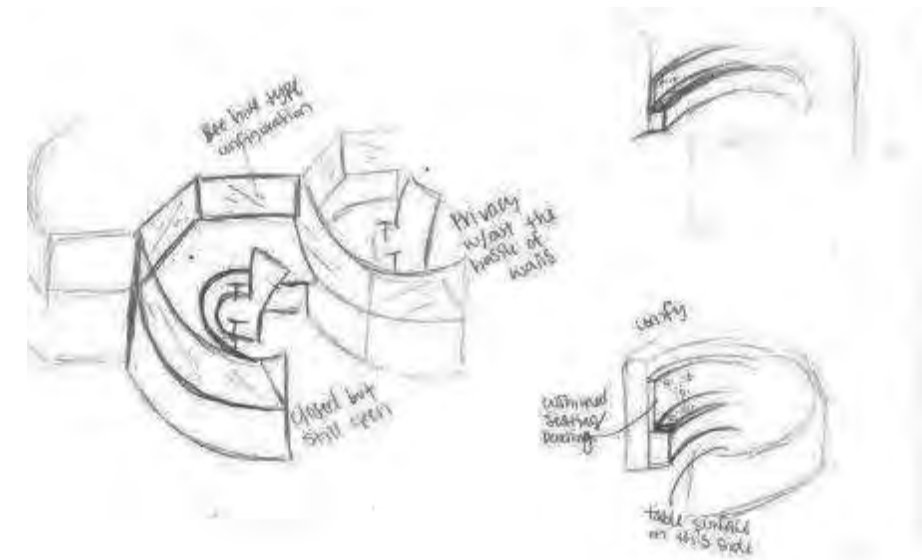
DIFFUSE FOCUS WORK



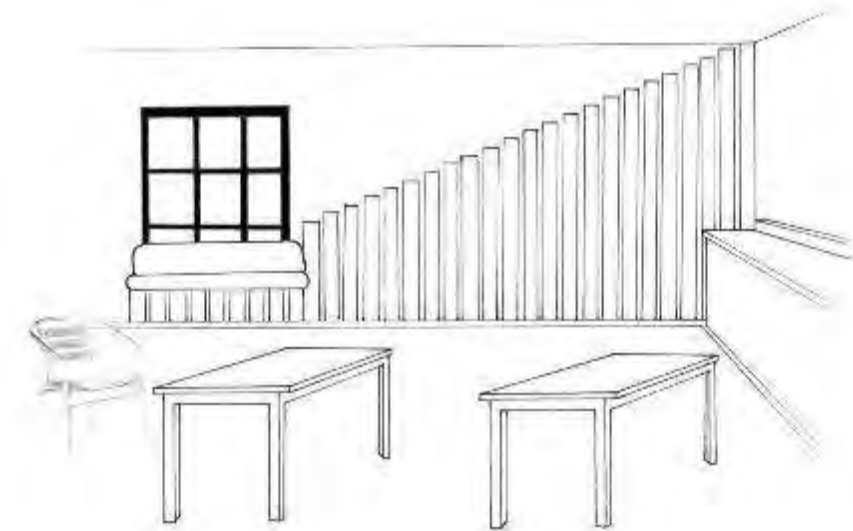
GROUP WORK / MEETING



DAY DREAMING



INTENSE FOCUS WORK



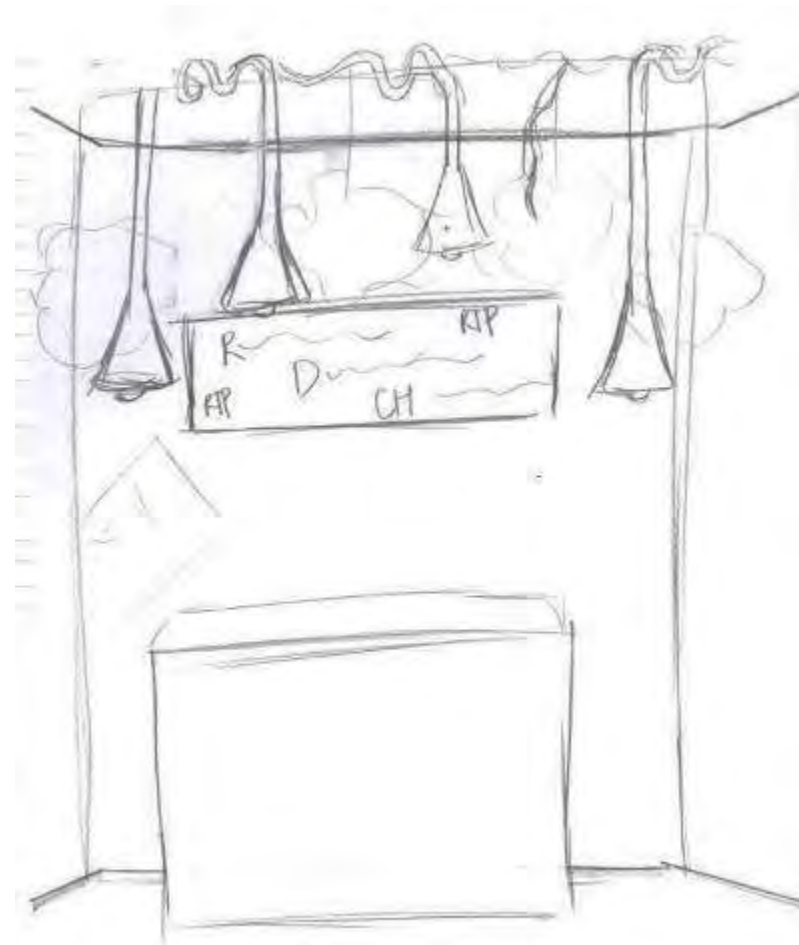
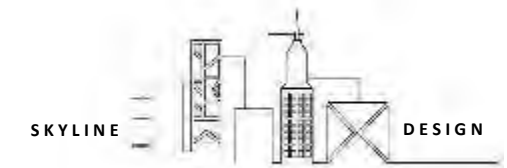
SOCIALIZING

Elizabeth Sechler

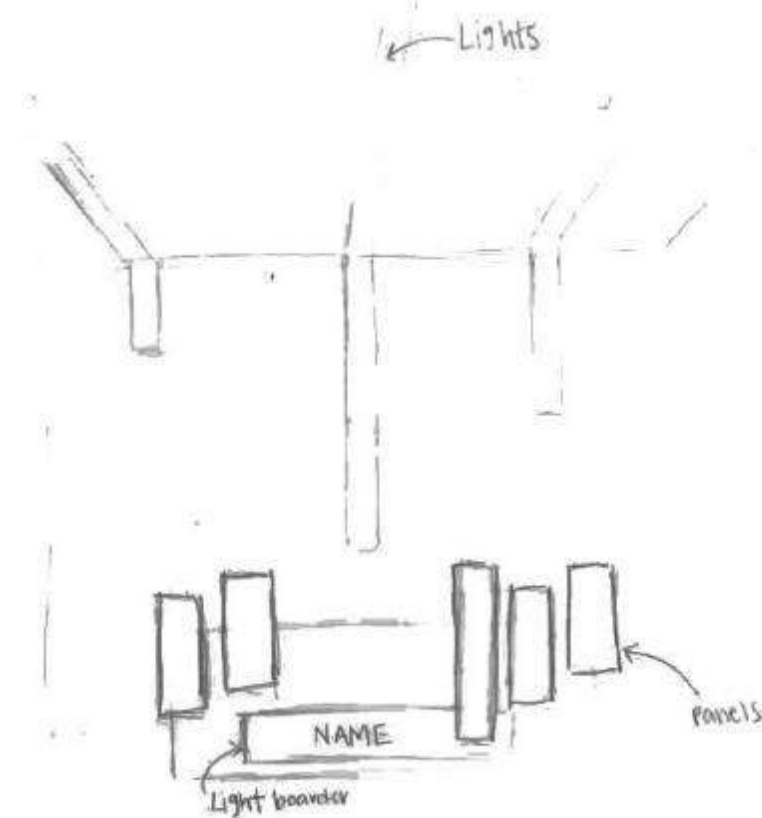
Rae Melvin

Taryn Pickering

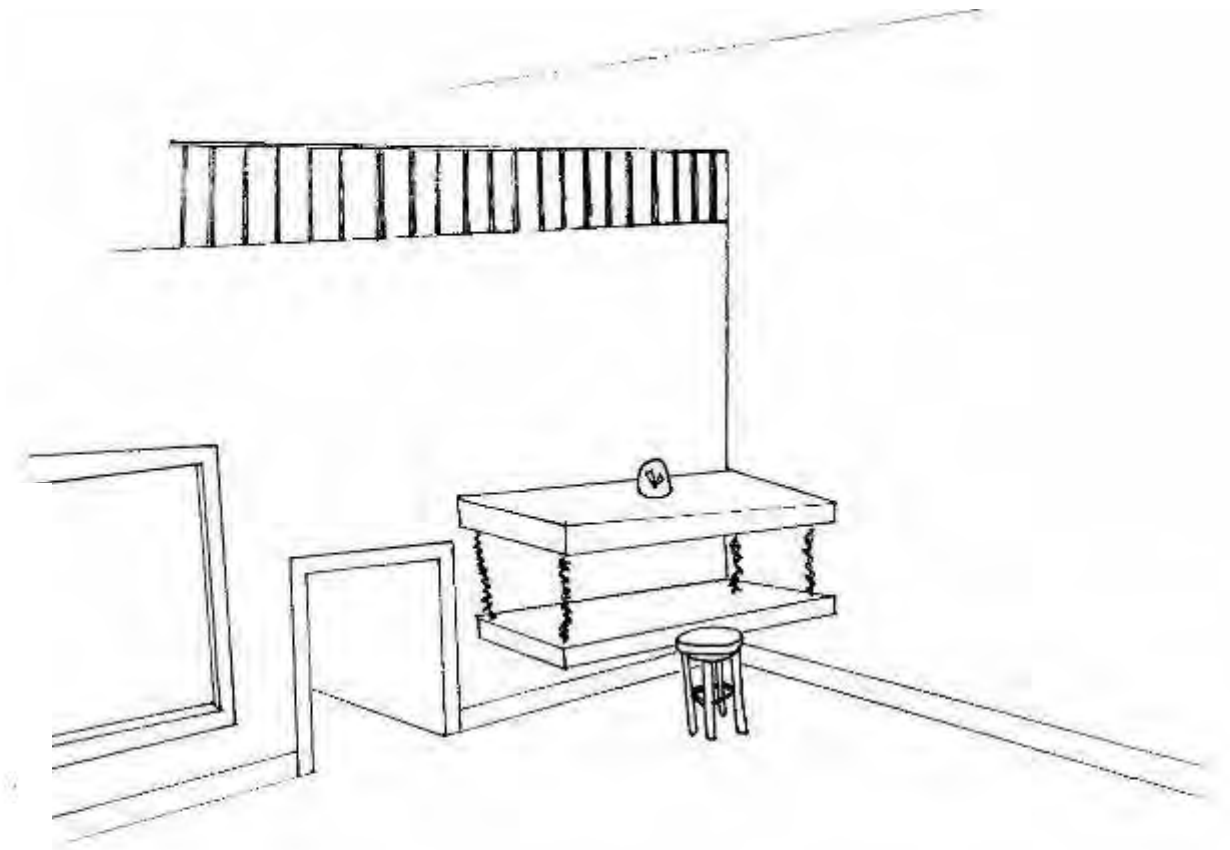
ENTRY PERSPECTIVE SKETCHES



Elizabeth Sechler

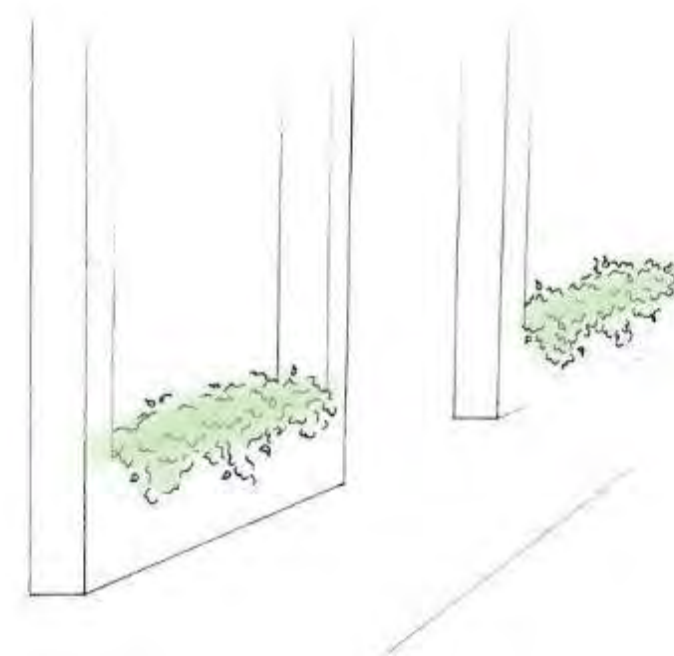
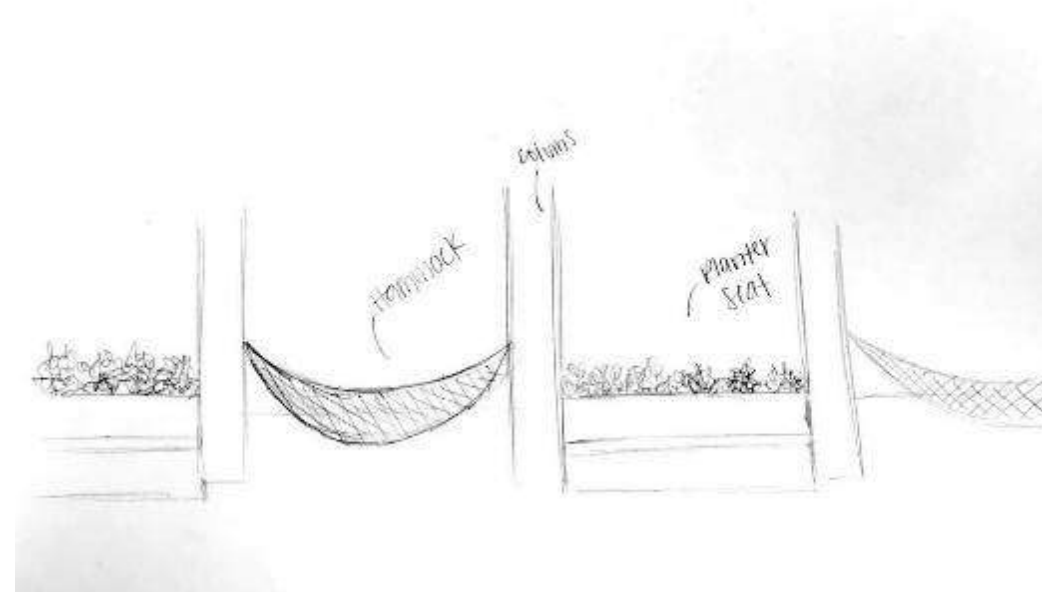
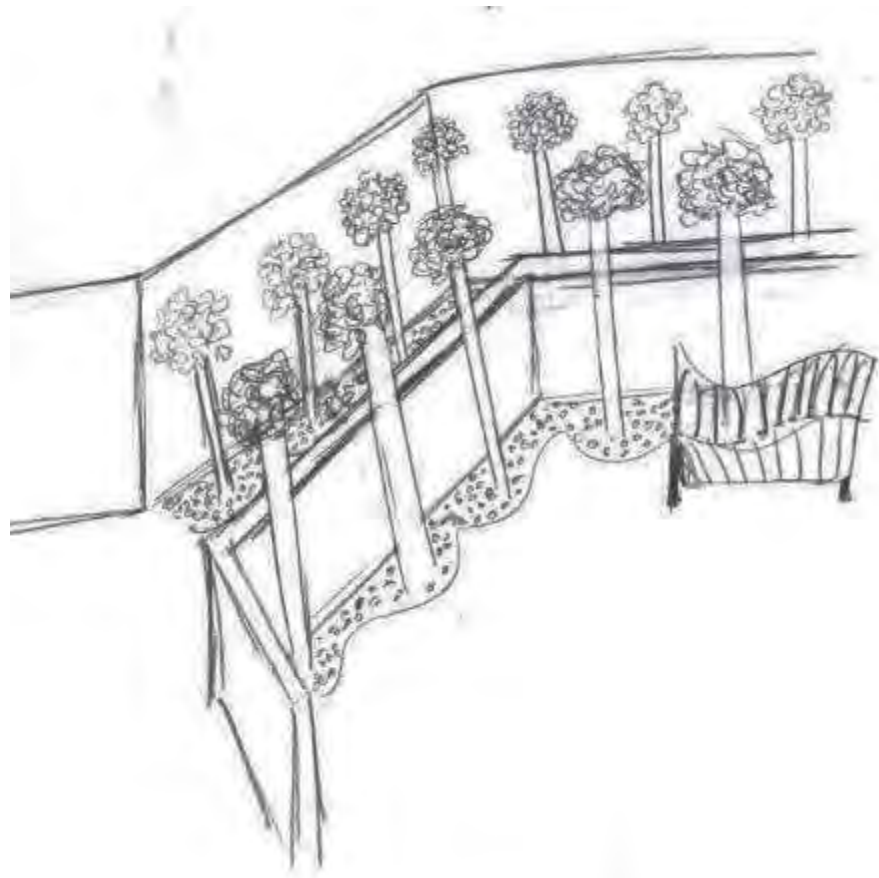
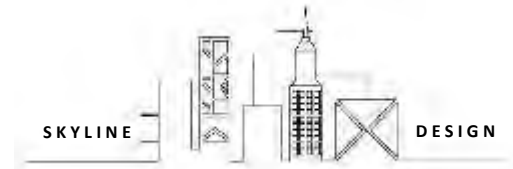


Rae Melvin



Taryn Pickering

MAIN CIRCULATION PERSPECTIVES SKETCHES

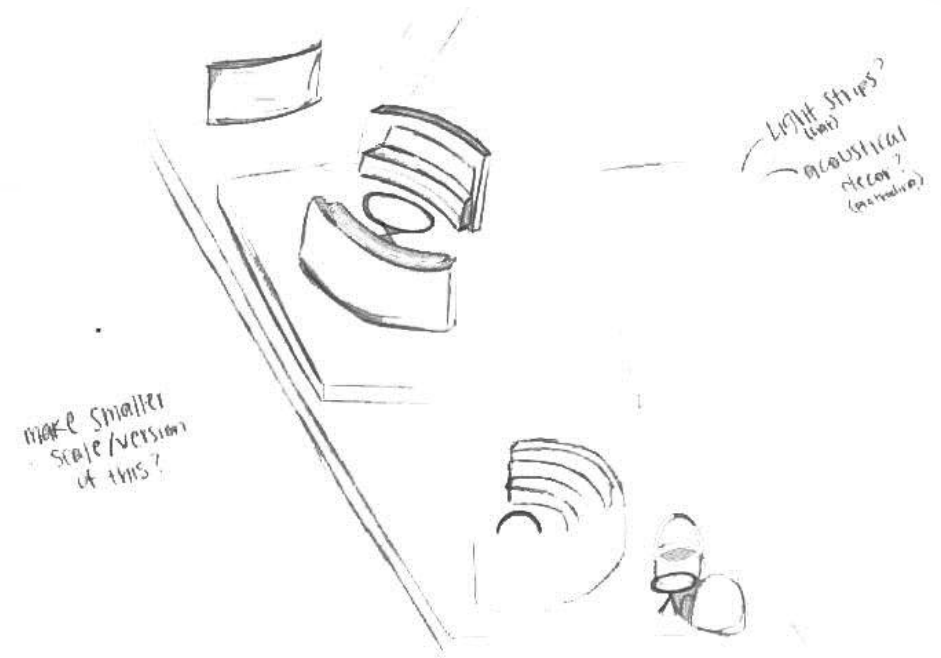
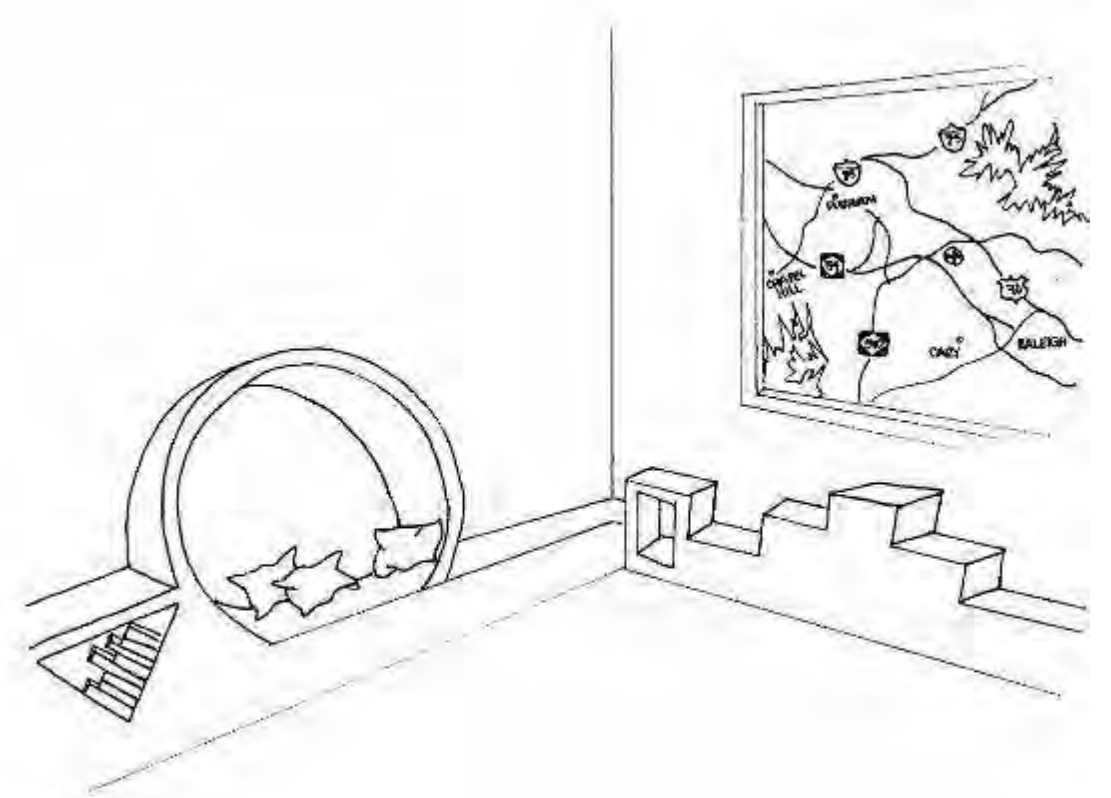
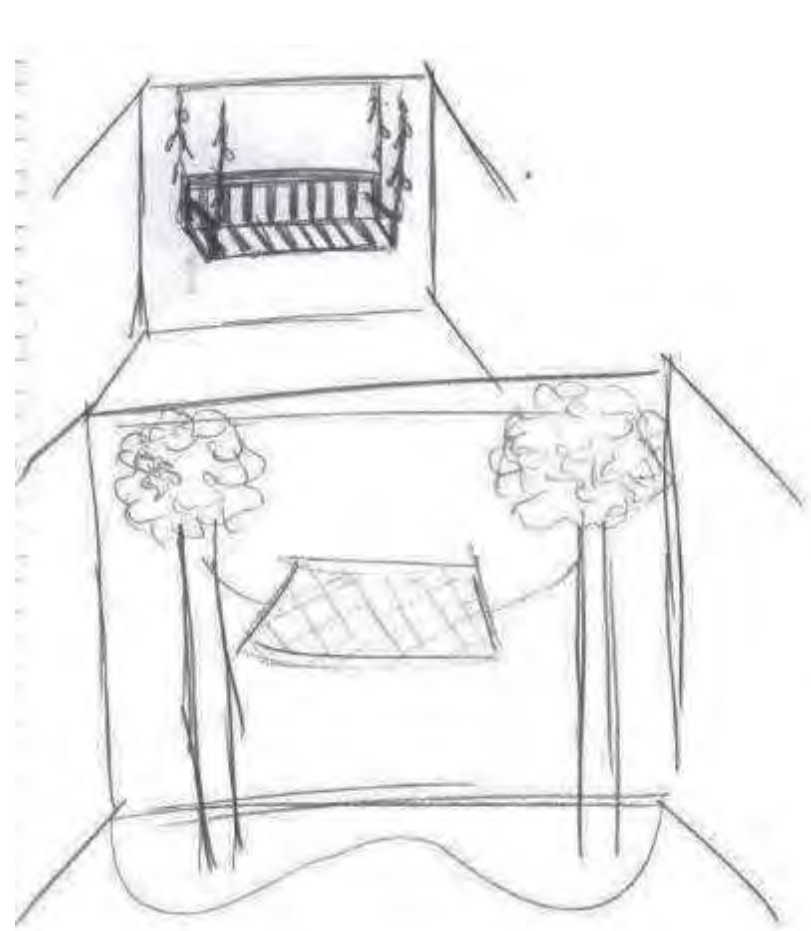


Elizabeth Sechler

Rae Melvin

Taryn Pickering

LOUNGE PERSPECTIVES SKETCHES

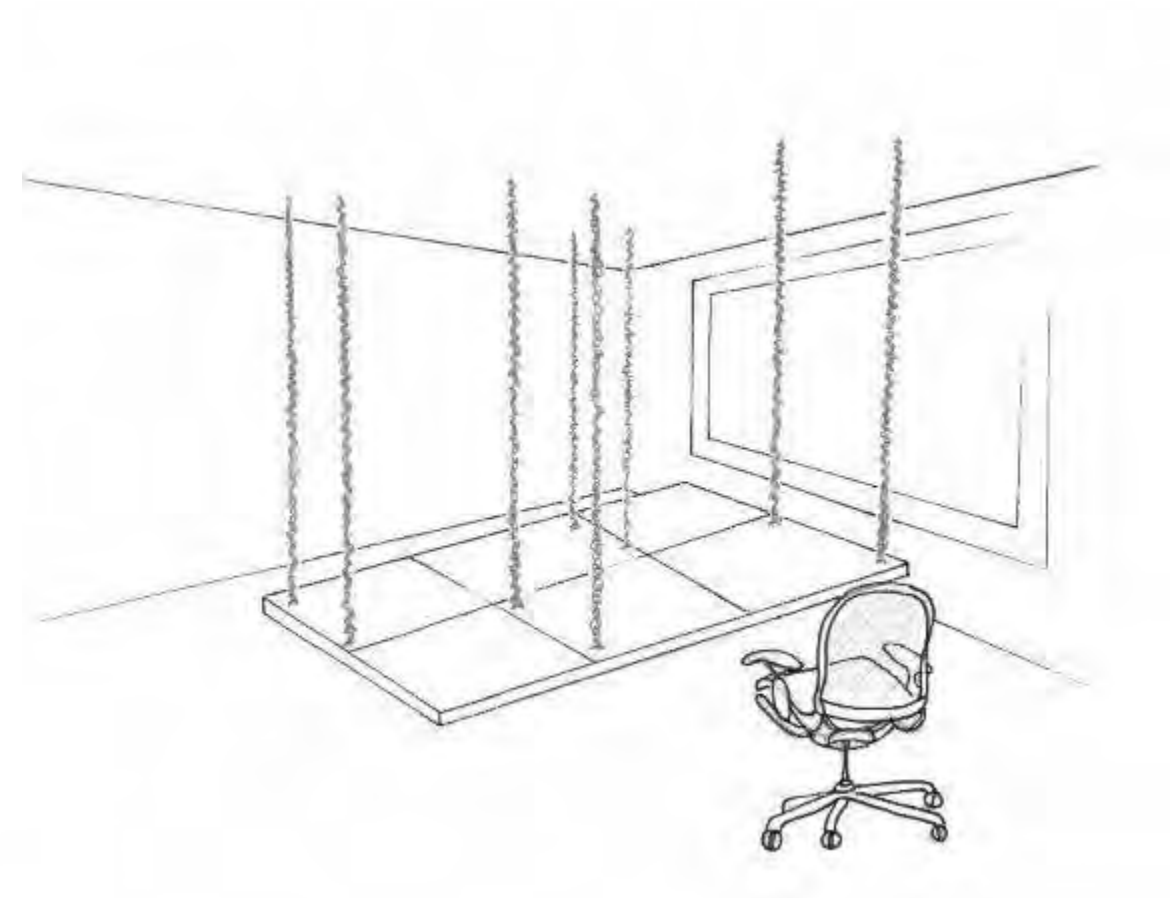
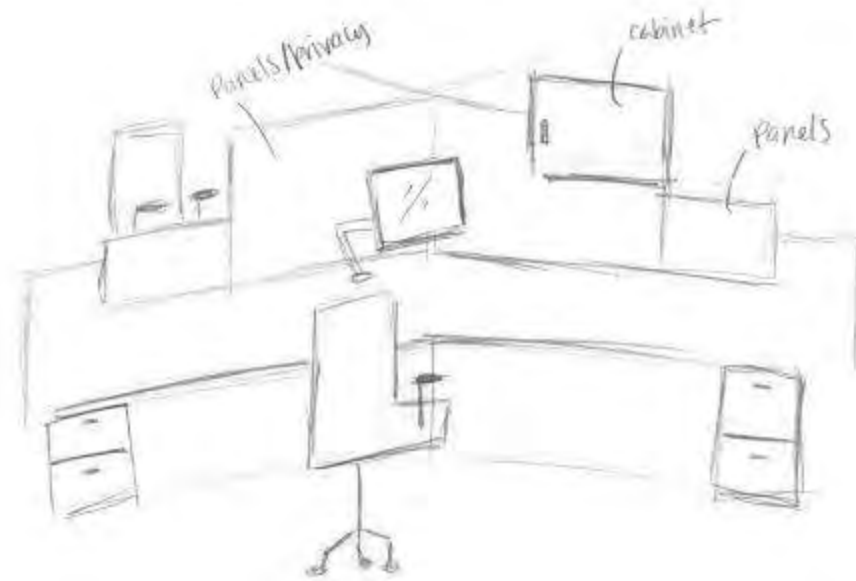
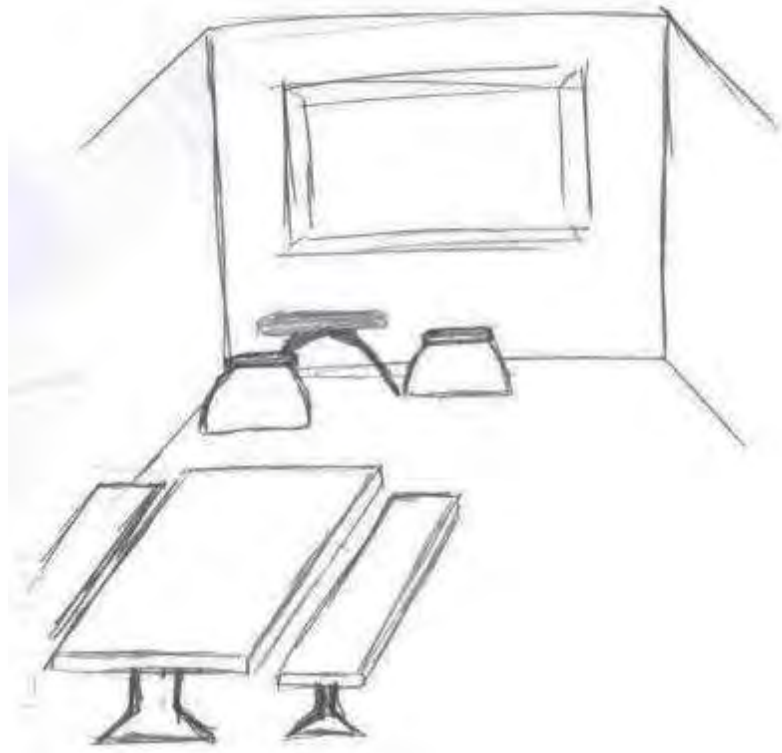
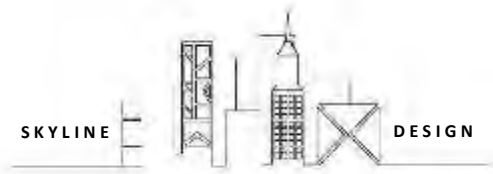


Elizabeth Sechler

Rae Melvin

Taryn Pickering

OPEN WORK AREA PERSPECTIVE SKETCHES

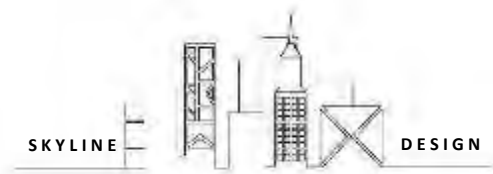


Elizabeth Sechler

Rae Melvin

Taryn Pickering

FLOORING AND COLOR SCHEMES



- NEUTRURAL COLOR SCHEME
- POPS OF GREEN AND RED
- NO SPECIFIC SHADES OR TINTS

COLOR PALLET

WOOD OPTIONS

- LUXURY VIYNAL TILE FOR FLOORS AND WALLS (HALLWAYS, GYM, LOUNGE, OFFICES, AND WORKSPACES)
- DARK TILE USED FOR LOBBY
- CARPET USED SPERATICALLY AROUND SPACE INCLUDING MAIN CONFRENECE ROOM



Elizabeth Sechler

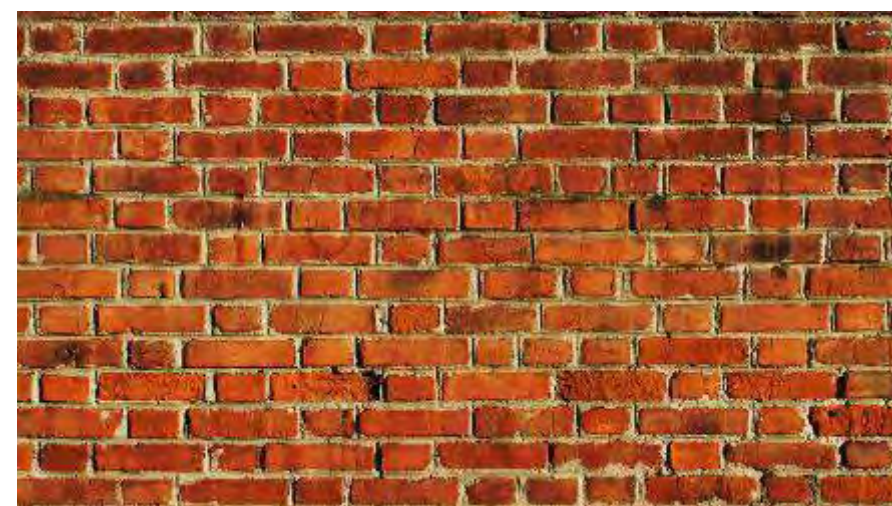
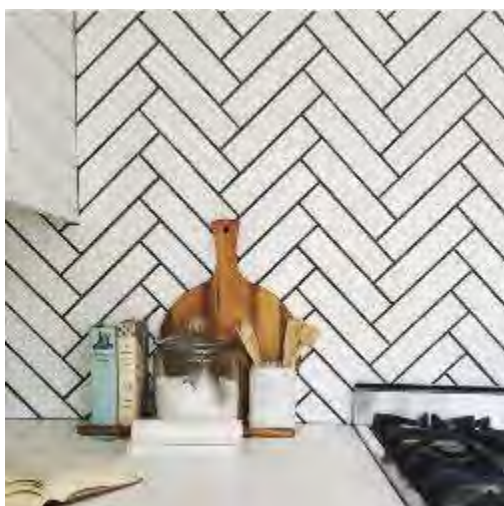
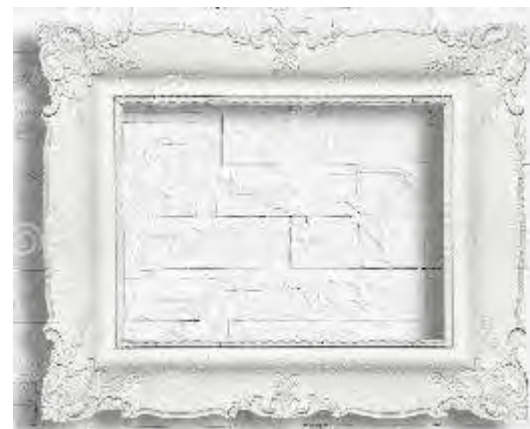
Rae Melvin

Taryn Pickering

FLOORING AND COLOR SCHEMES

TEXTURES

TEXTURE HELPS ADD INTEREST TO THE SPACE. WE PLAN ON USING TEXTURE AND DESIGN THROUGHOUT THE SPACE TO KEEP OUR DESIGN FRESH AND FUN AS WELL AS PROVIDING A FUNCTION WORK ENVIROMENT.



Elizabeth Sechler

Rae Melvin

Taryn Pickering

FURNITURE - WORK STATIONS

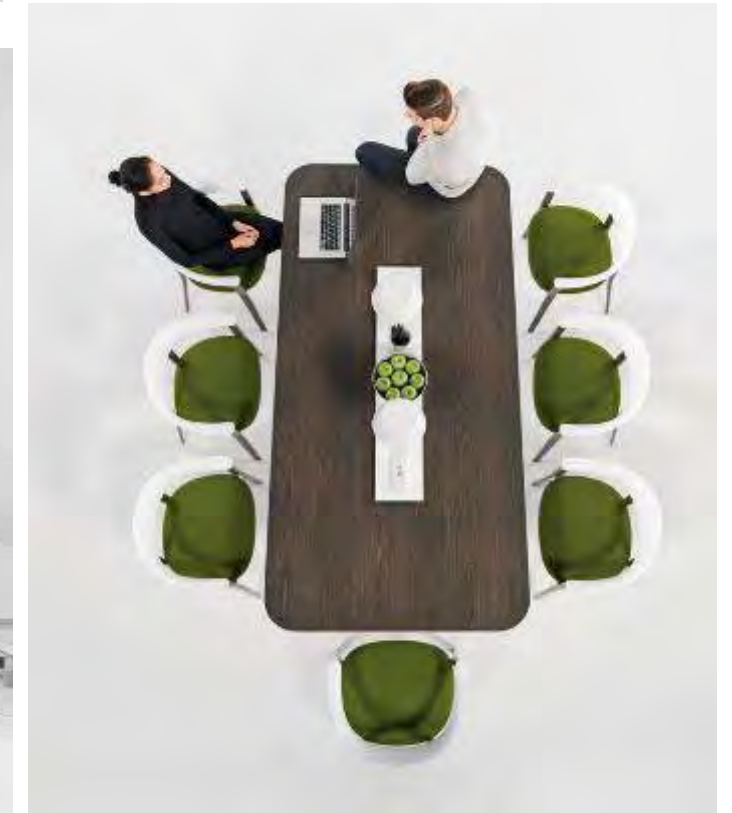


Elizabeth Sechler

Rae Melvin

Taryn Pickering

FURNITURE-OFFICES



Elizabeth Sechler

Rae Melvin

Taryn Pickering

FURNITURE-LOUNGE

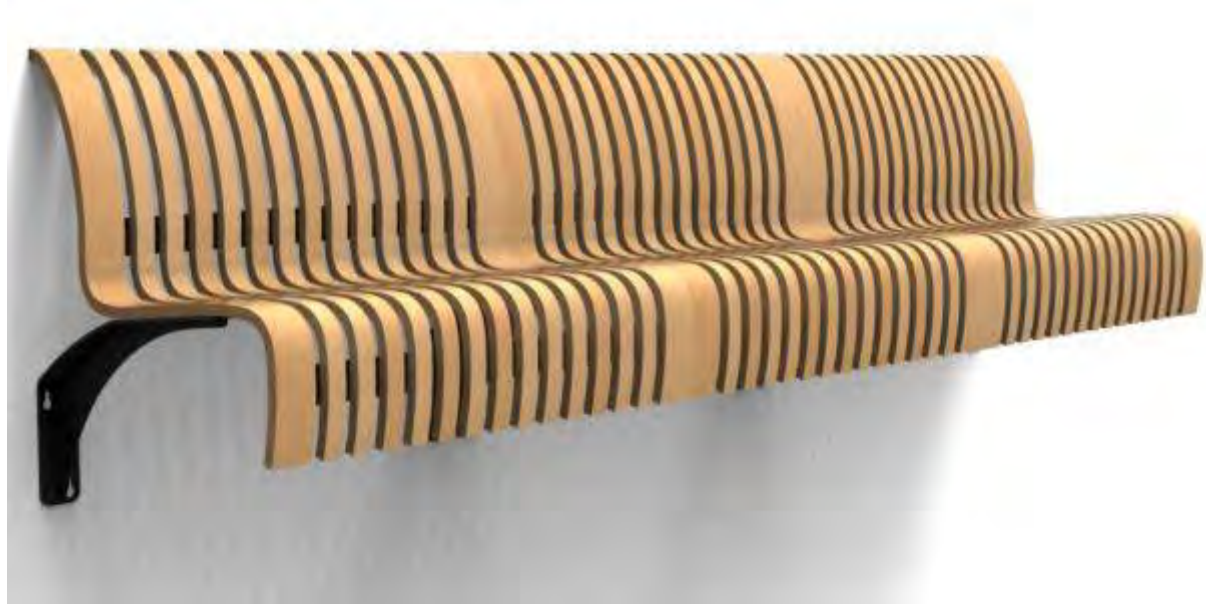


Elizabeth Sechler

Rae Melvin

Taryn Pickering

FURNITURE-CIRCULATION



Elizabeth Sechler

Rae Melvin

Taryn Pickering

LIGHTING-CIRCULATION



Elizabeth Sechler



Rae Melvin



Taryn Pickering

LIGHTING-LOUNGE



Elizabeth Sechler



Rae Melvin



Taryn Pickering

LIGHTING-WORKSTATIONS



Elizabeth Sechler

Rae Melvin

Taryn Pickering

LIGHTING-CLOSED WORK AREA



Elizabeth Sechler

Rae Melvin

Taryn Pickering

LIGHTING-ENTRY



Elizabeth Sechler



Rae Melvin



Taryn Pickering

WORKSTATIONS:

- THE LIGHTING WE HAVE CHOSEN FOR THE WORKSTATIONS WILL PROVIDE ENOUGH LIGHTING FOR EACH INDIVIDUAL WORKING WITHOUT BEING TOO HEAVY AND CROWDING THE SPACE. THE LUMINARIES WE HAVE CHOSEN HAVE DOWN LIGHTING TO FOCUS ON THE TASK AT HAND.

LOUNGE:

- THE LIGHTING SELECTED FOR THE LOUNGE SPACE IS FUN AND PLAYFUL AND DRAWS IN YOUR EYE. DIFFERENT TYPES OF LIGHTING HAVE BEEN CHOSEN WHILE STILL ALL HAVING THE SAME EFFECT TO CREATE AN ATMOSPHERE OF BEING OUTDOORS. WE HAVE LIGHTING COMING FROM ALL DIFFERENT HEIGHTS AND DIRECTIONS WHILE

INCORPORATING A LARGE FAN TO GIVE THE ILLUSION OF A BREEZE. THIS ENHANCES THE SPACE BY CREATING A CALMING WORK AREA THAT IS STILL PRACTICAL.

CLOSED WORK AREA:

- IN THE CONFERENCE ROOMS AND PRIVATE OFFICES WE SELECTED SOMETHING A LITTLE SLEAKER WITH THE STRAIGHT EDGE HANGING LIGHT. WHILE ALSO HAVING A DESK LAMP THAT CARRIES MATERIALS AND TEXTURES FROM THE OTHER AREAS IN THE OFFICE.

ENTRY:

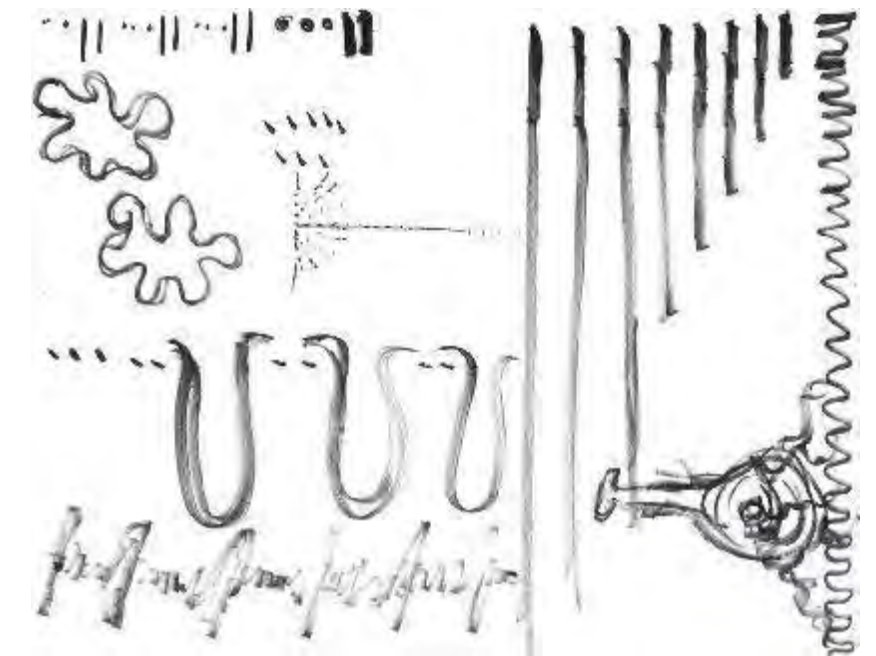
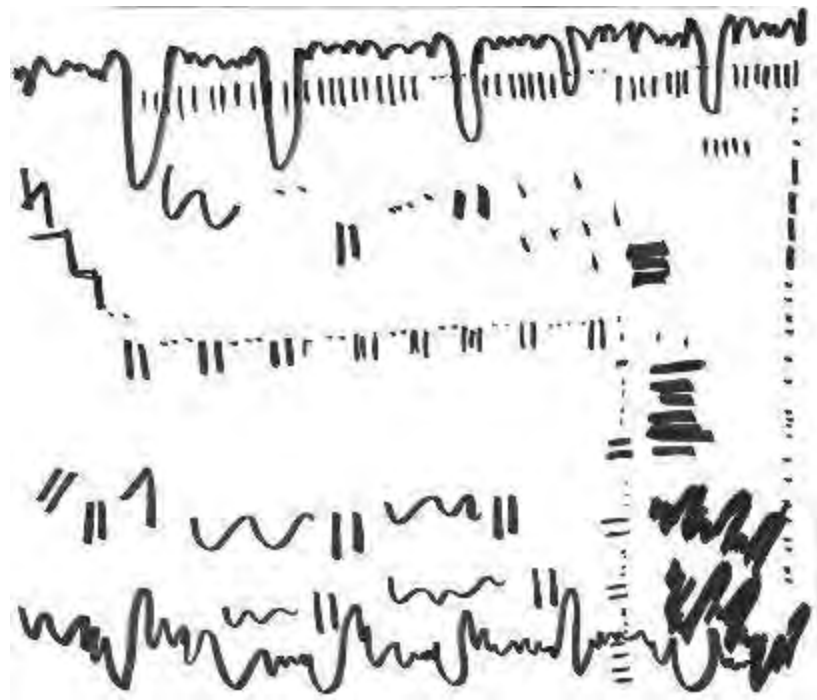
- FOR THE ENTRY BEING THE FIRST THING THAT YOU SEE WE WANTED TO DO SOMETHING THAT POPPED WE DECIDED TO GO WITH THE GFC

HANGING LEAF LAMP SERIES HAVING THE LIGHT SOME THROUGH IN OPENINGS IN THE WHITE LEAVES GIVES OFF THE ILLUSION OF LIGHT WHITE PUFFY CLOUDS WHILE STILL LOOKING MODERN AND FUNCTIONAL. THIS ENHANCES THE SPACE BECAUSE IT SETS YOU UP FOR WHAT IS AROUND THE CORNER.

CIRCULATION:

- IN THE CIRCULATION WE RELY HEAVILY ON THE TREE/BENCH LIGHT COMBOS TO CREATE SECTIONS AND WALKWAYS. AS WELL ARTISTIC LIGHTING, PANELING ON THE CEILING FOR WAYFINDING AS WELL AS BEAUTY. THIS ENHANCES THE SPACE BY CREATING THE FEELING OF MEANDERING THROUGH OUR SPACE "A PARK".

MUSIC MODEL - Elizabeth Sechler

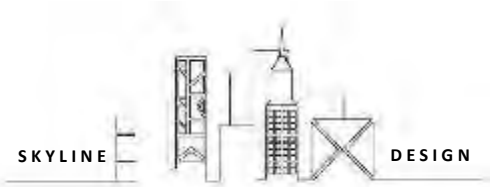


Elizabeth Sechler

Rae Melvin

Taryn Pickering

MUSIC MODEL - TARYN PICKERING



Elizabeth Sechler

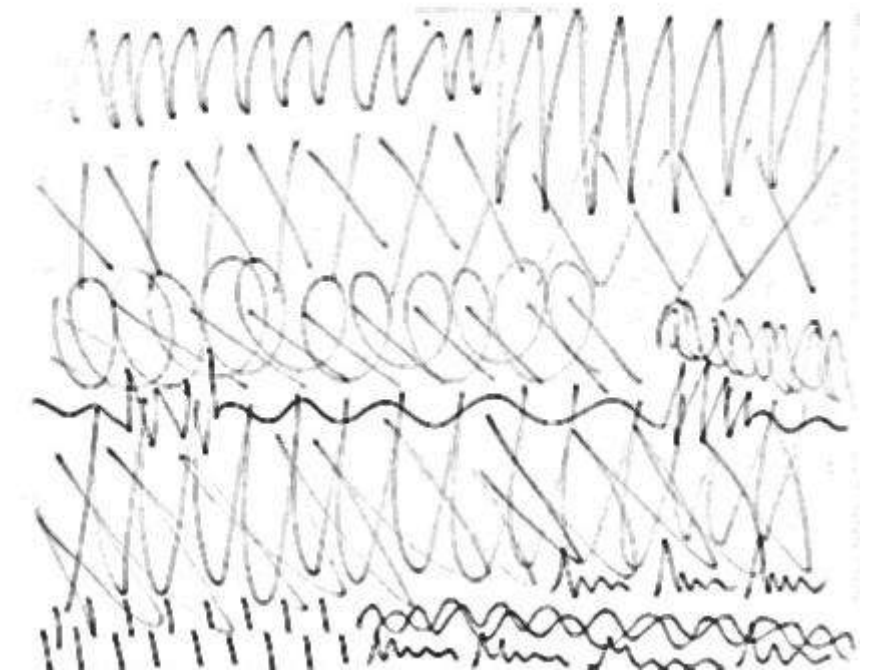
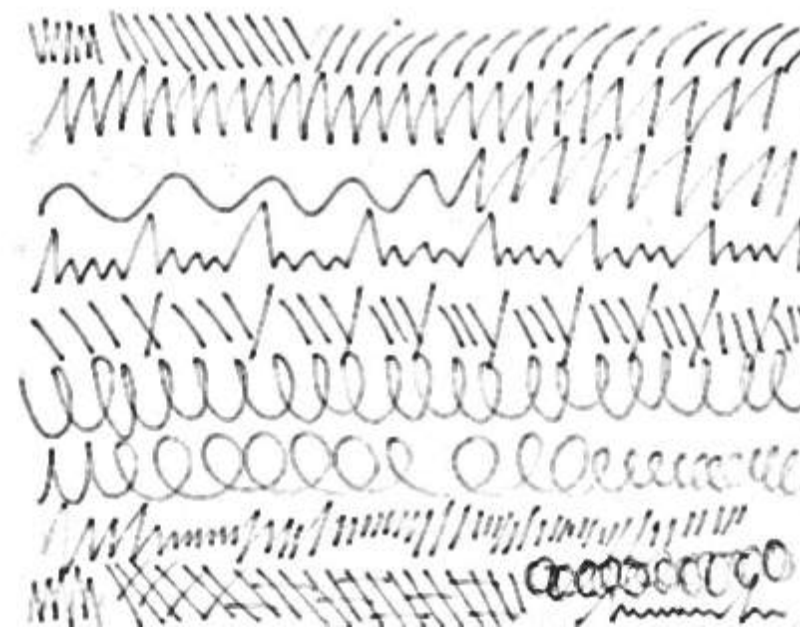
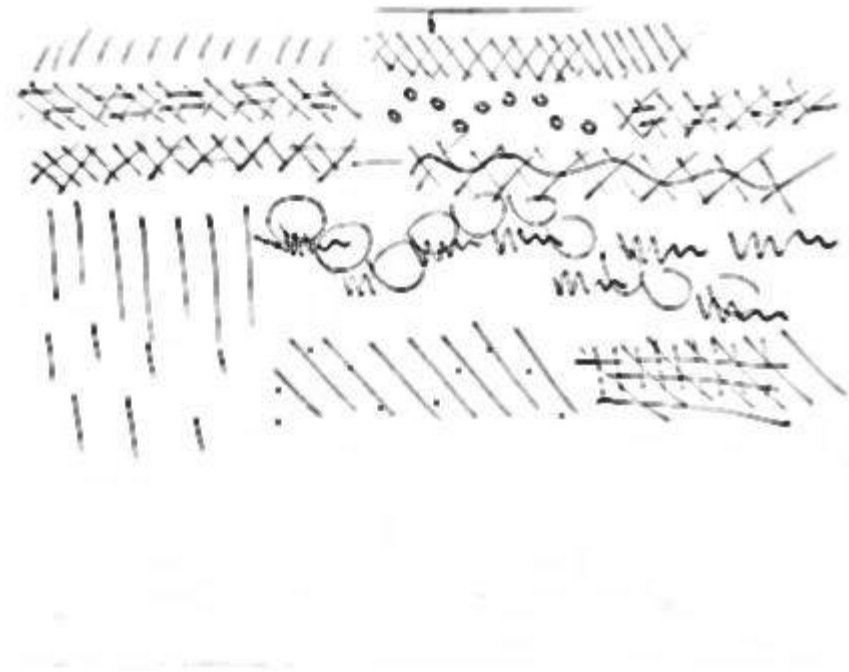
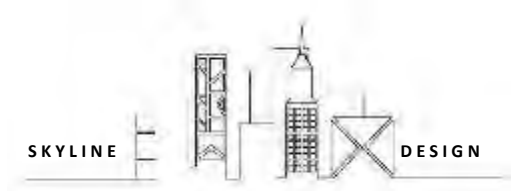


Rae Melvin



Taryn Pickering

MUSIC MODEL - Rae Melvin



Elizabeth Sechler

Rae Melvin

Taryn Pickering