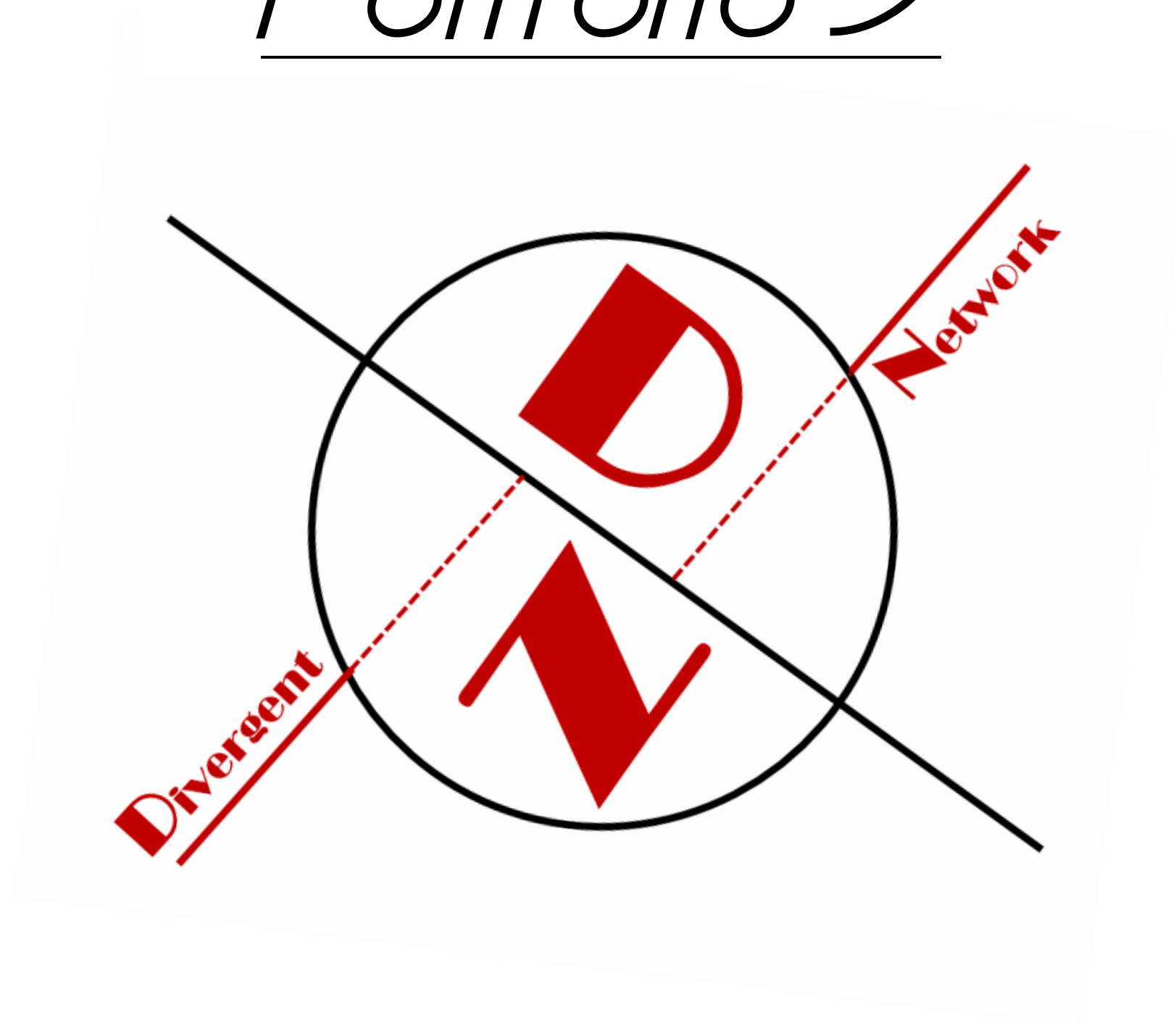


Portfolio 3



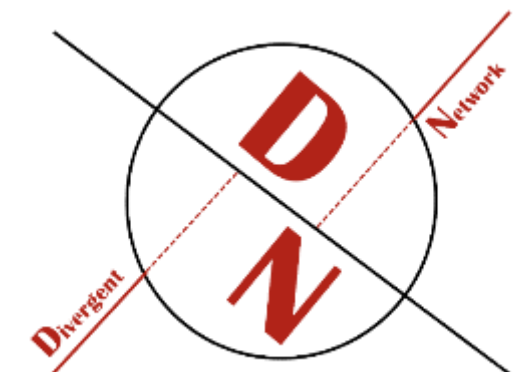
Reese Barkley

Jessica Wood

Gini Clark

PRELIMINARY BUDGET

Suite (useable <u>sq</u> footage)	Construction- \$140	Furniture- \$50
1000- (9929)	\$1,390,060	\$496,450
2000- (7282)	\$1,019,480	\$364,100
3000- (2968)	\$415,520	\$148,400
Totals=	\$2,825,060	\$1,008,950



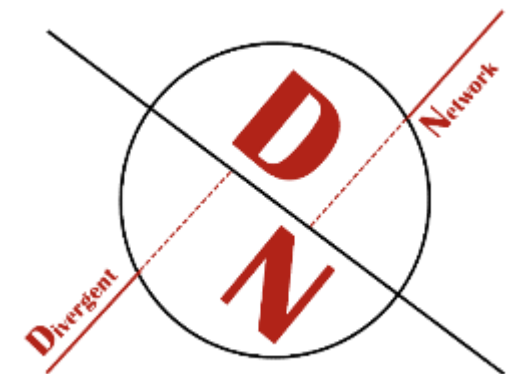
CHALLENGE RESOLUTION STATEMENT

Multiple columns/ angle of the building and columns

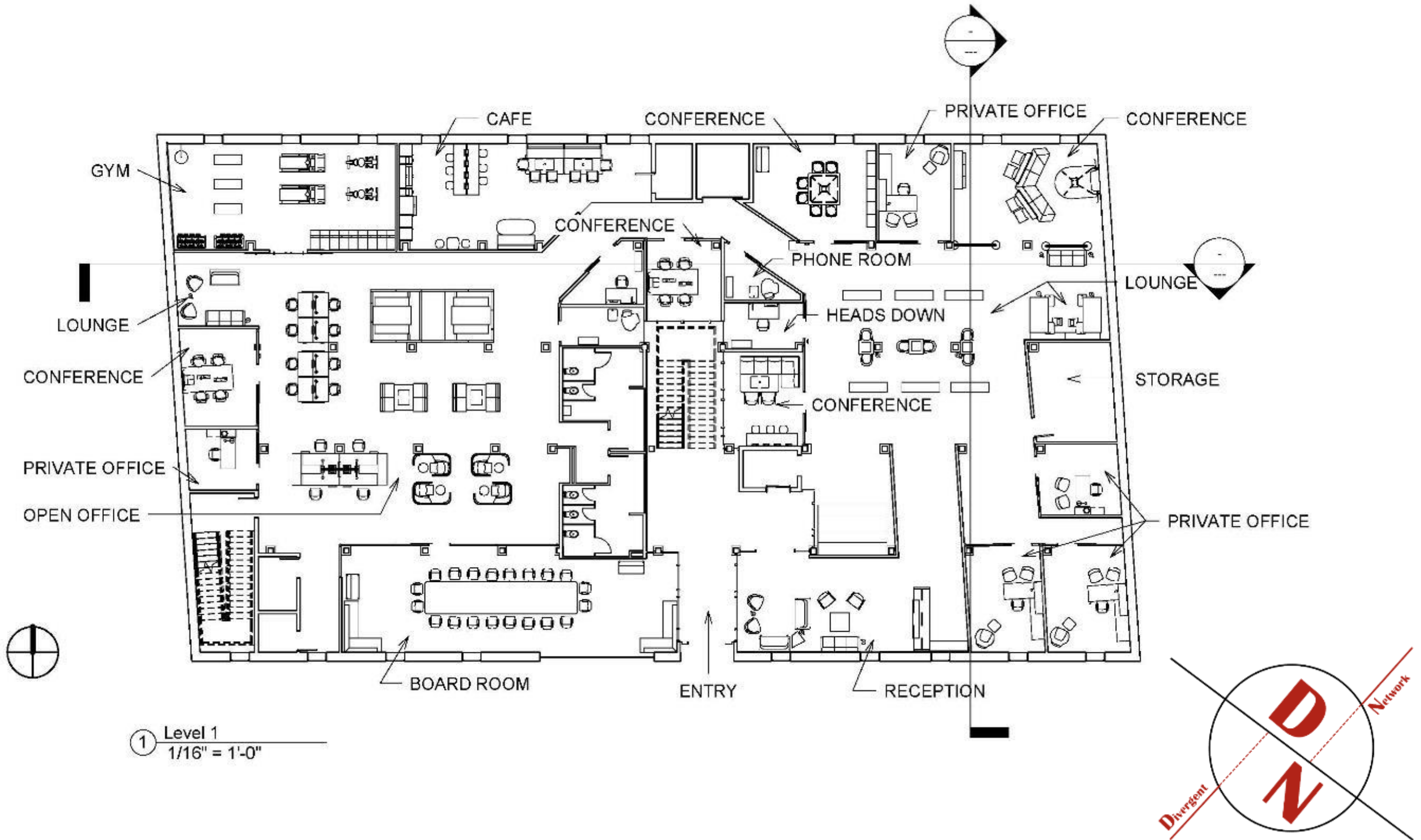
- *Created angled walls and pathways throughout the space*
- *Incorporated columns with the walls so they didn't take up space in closed rooms*
- *Incorporating furniture between the columns*

Lack of natural lighting

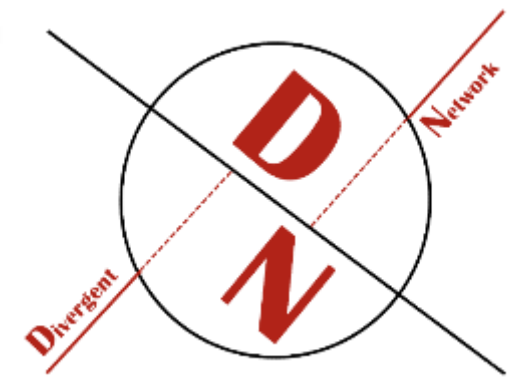
- *Having glass walls*
- *Using reflective elements*
- *Incorporating white in the space*



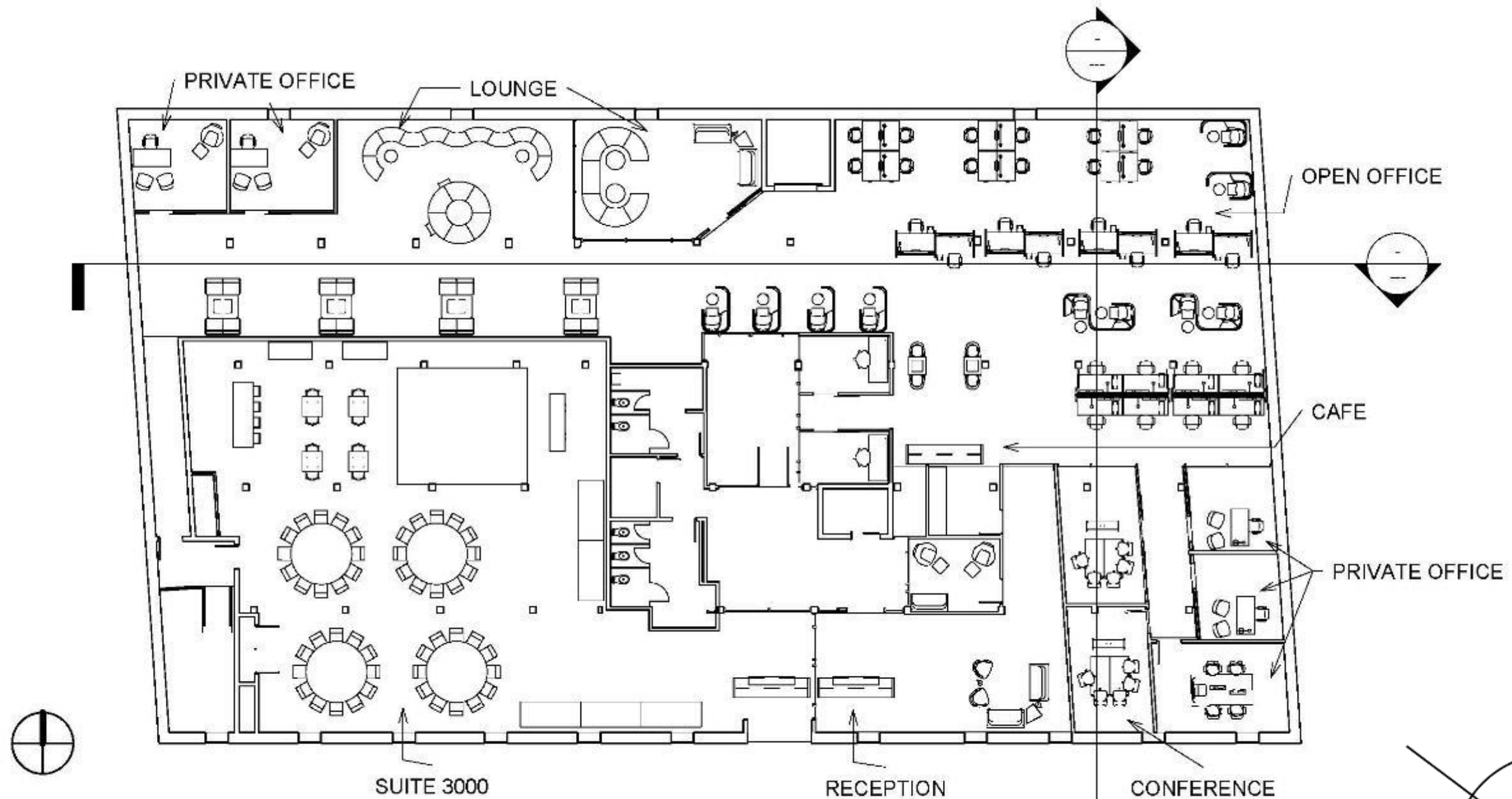
1st FLOOR FURNITURE PLAN



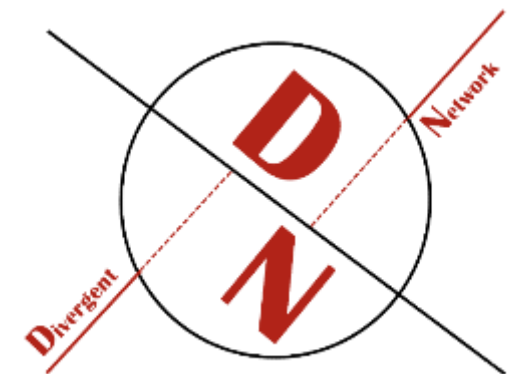
① Level 1
1/16" = 1'-0"



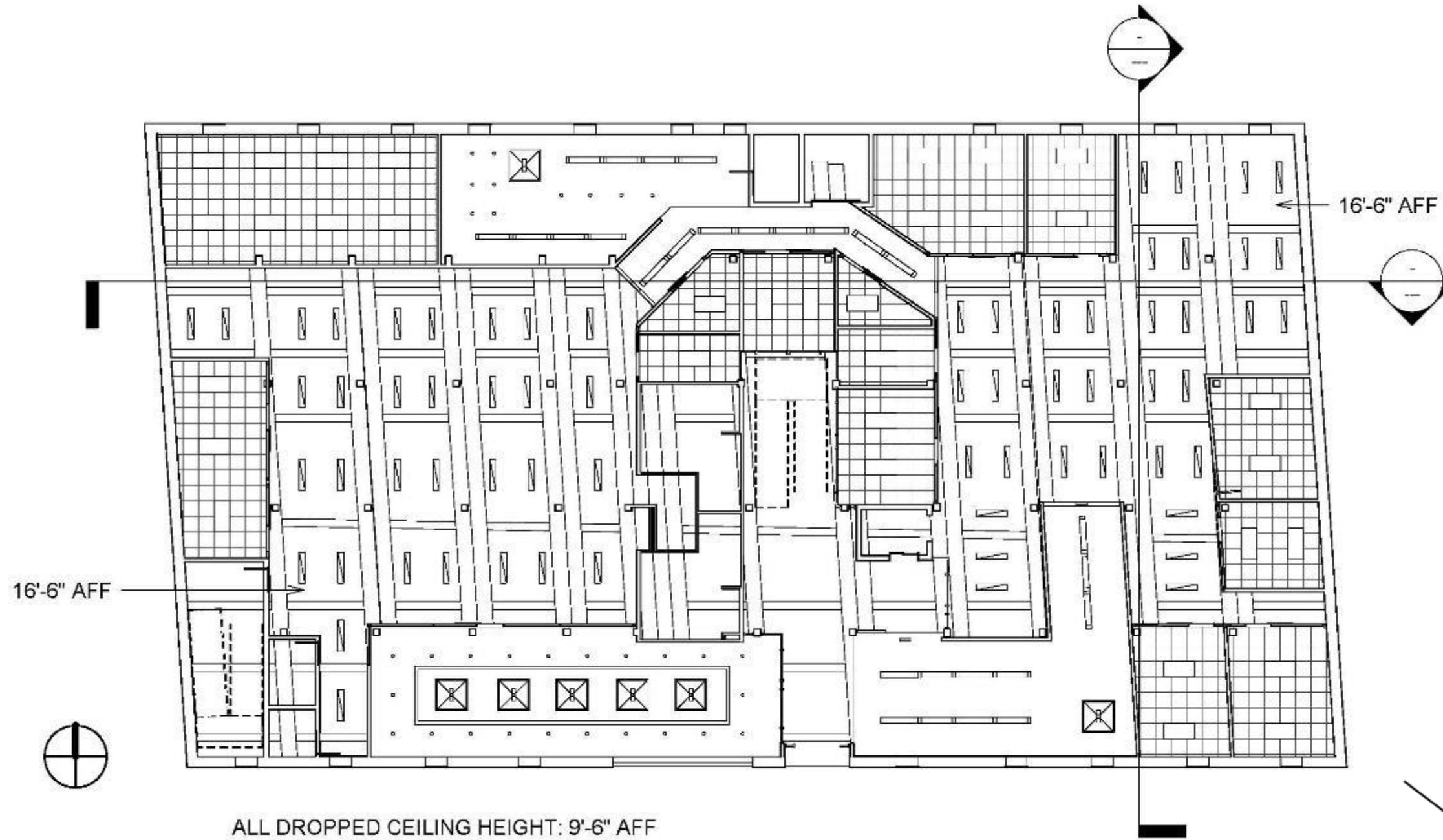
2nd FLOOR FURNITURE PLAN



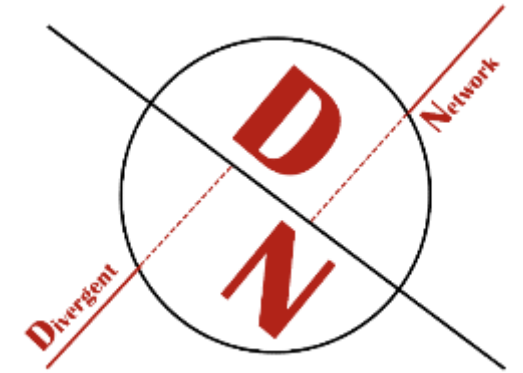
① Level 2
1/16" = 1'-0"



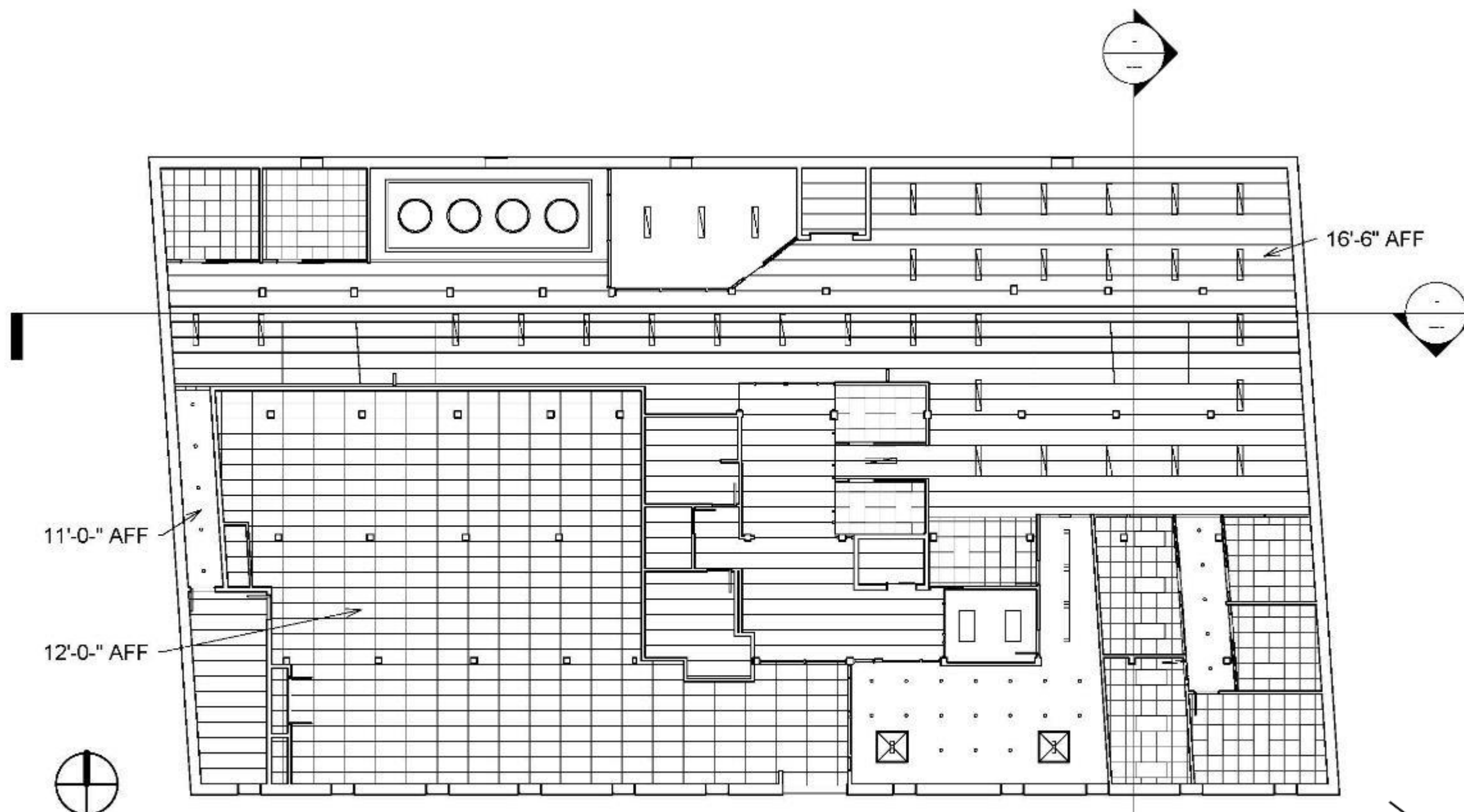
1st FLOOR REFLECTED CEILING PLAN



① Level 1
1/16" = 1'-0"

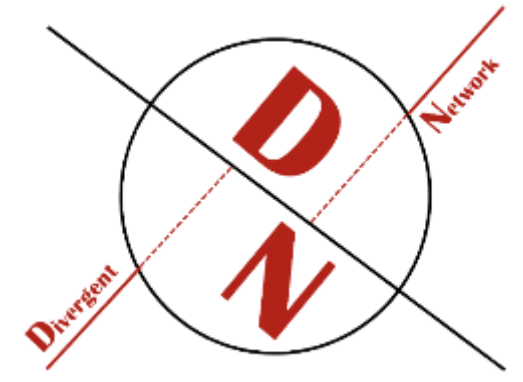


2nd FLOOR REFLECTED CEILING PLAN










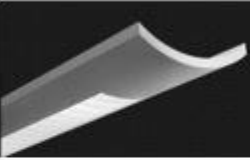






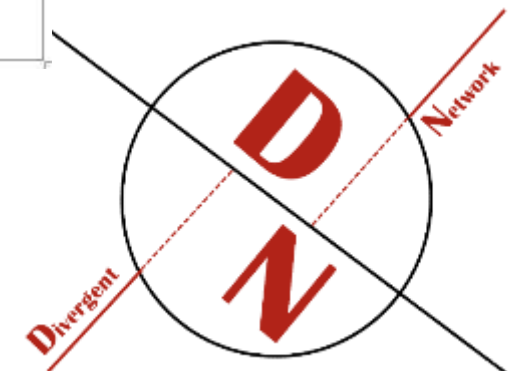
ALL DROPPED CEILING HEIGHT: 9'-6" AFF UNLESS OTHERWISE NOTED

① Level 2
1/16" = 1'-0"

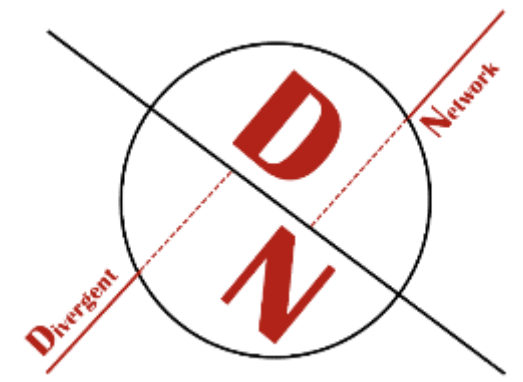
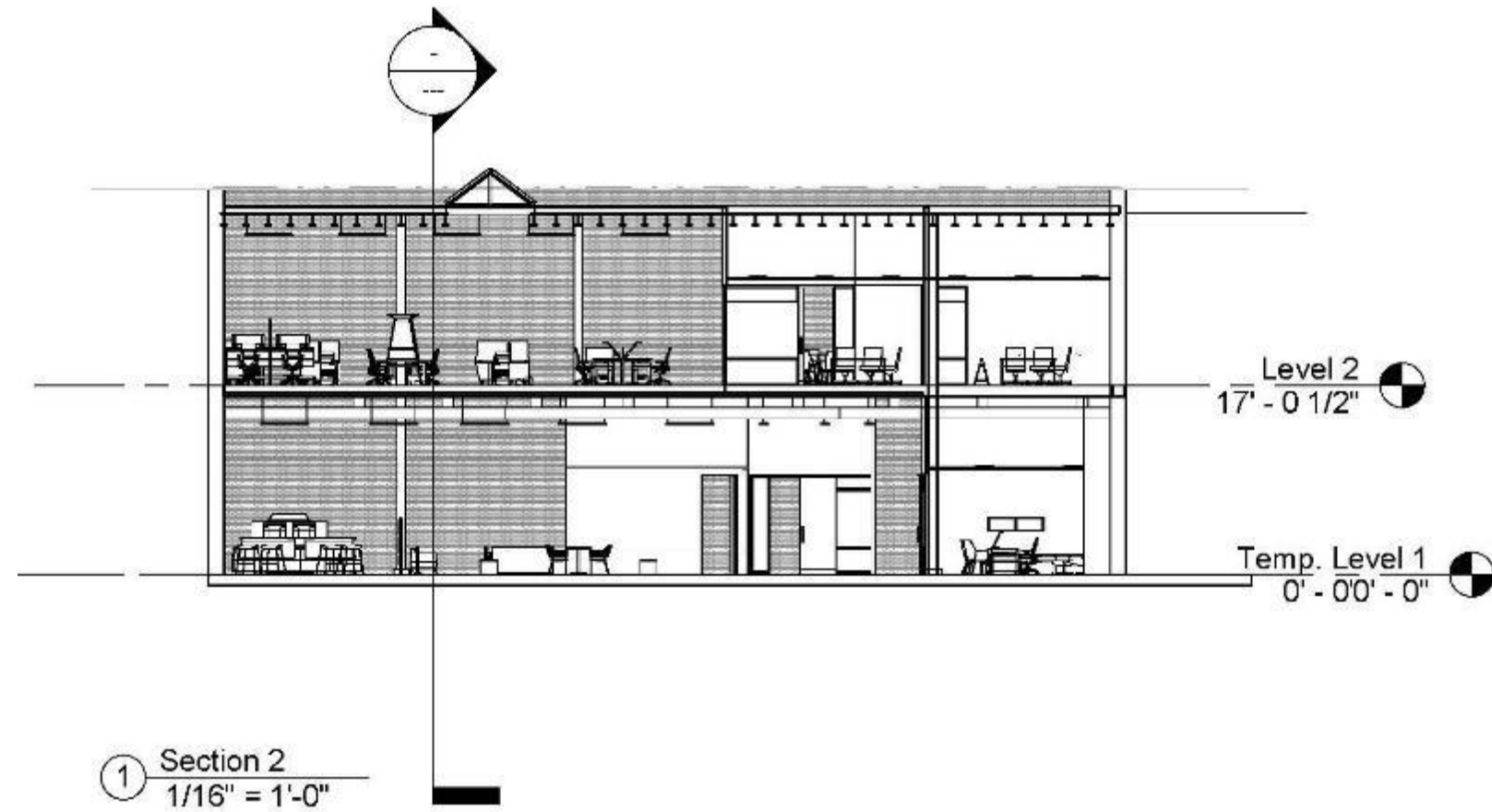


LIGHTING SCHEDULE

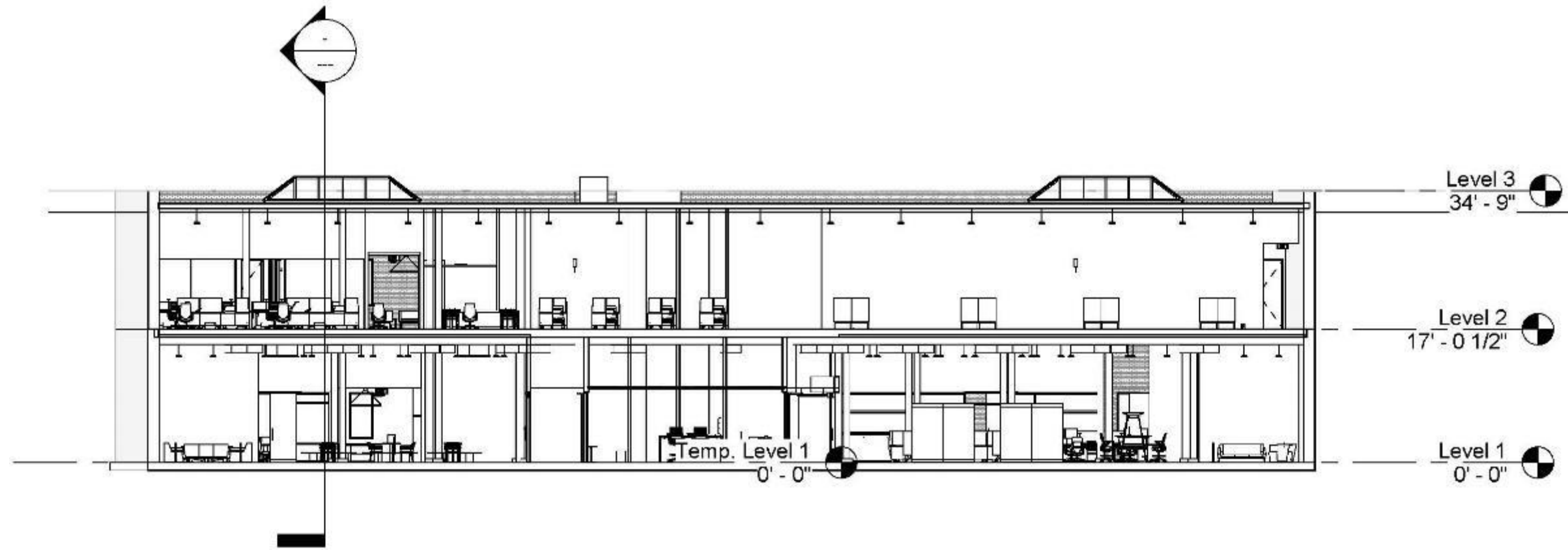
Fixture	Symbol	Manufacturer	Location	Picture
Aerion 2x4		Focal Point	Gym, Conference Rooms, Private Offices, Suite 3000	
CoreLite Veritechs High Efficiency Pendant		Cooper Lighting	Open Office	
Recessed Downlight		Focal Point	Board Room, Breakroom, Reception, Walkways	
Nera Pendant		Focal Point	Reception	
Verve Suspended		Focal Point	Walkways, Breakroom	
Wave Round Suspended 3'-1"Dia		Intra Lighting	Breakroom	
Wave Round Suspended 4'-4"Dia		Intra Lighting	Board Room, Lounge	



N-S BUILDING SECTION



E-W BUILDING SECTION



① Section 1
1/16" = 1'-0"

