



FUSION

DIVERSITY...BALANCE...HARMONY

Jacinta Cofield
Georgina Hendricks
Sara Williamson

Preliminary Budget

Suite 1000:

- Architectural Finishes: \$1,400,840 (10,006 sq. ft. x \$140/square foot average for location)
- Furniture Finishes: \$500,300 (100,006 sq. ft. x \$50/ square foot average for location)

Suite 2000:

- Architectural Finishes: \$1,021,160 (7,294 sq. ft. x \$140/square foot average for location)
- Furniture Finishes: \$364,700 (7,294 sq. ft. x \$50/square foot average for location)

Suite 3000:

- Architectural Finishes: \$415,100 (2,965 sq. ft. x \$140/square foot average for location)
- Furniture Finishes: \$148,250 (2,965 sq. ft. x \$50/ square foot average for location)

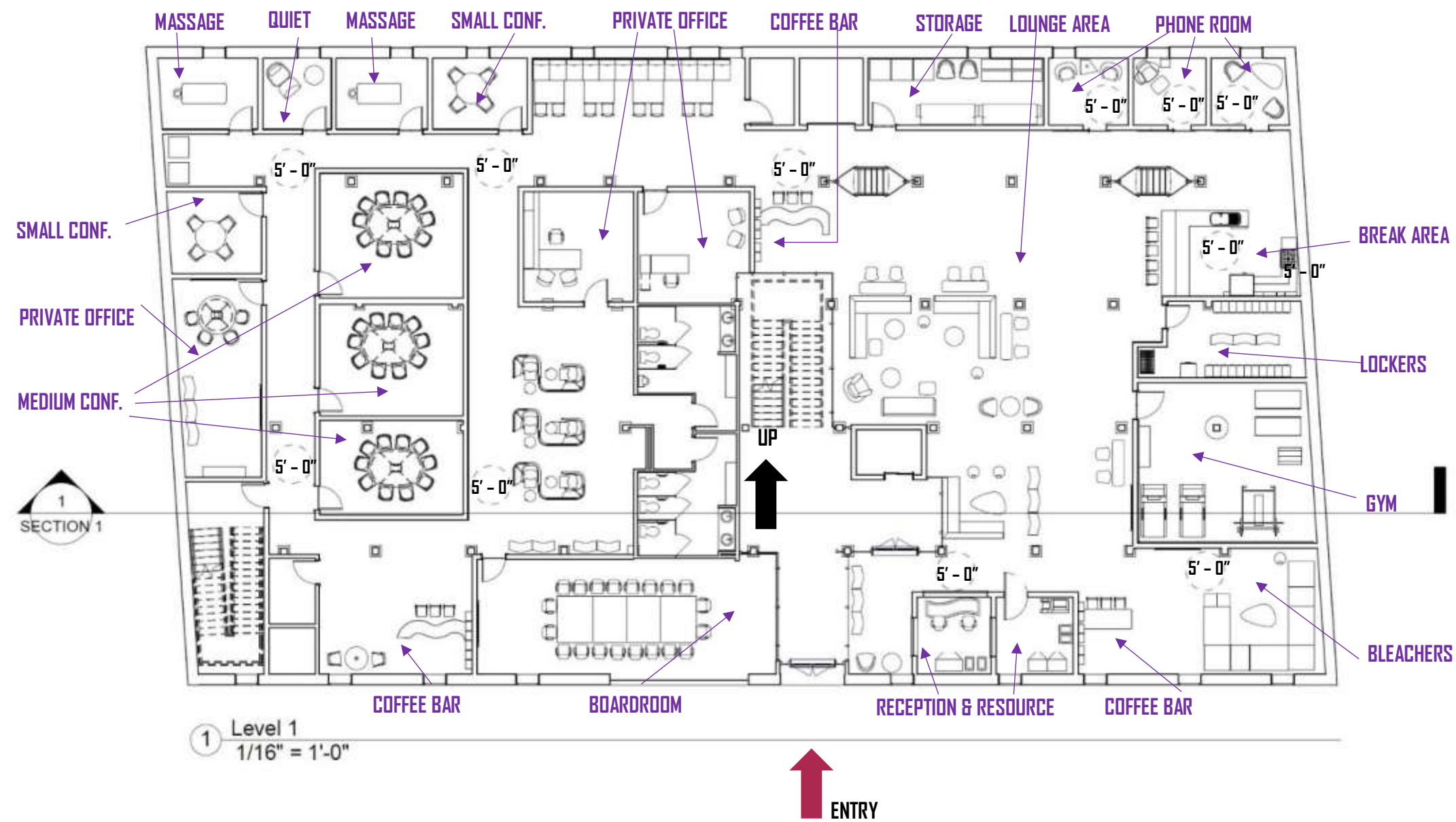
Total Architectural Finishes: \$2,837,100

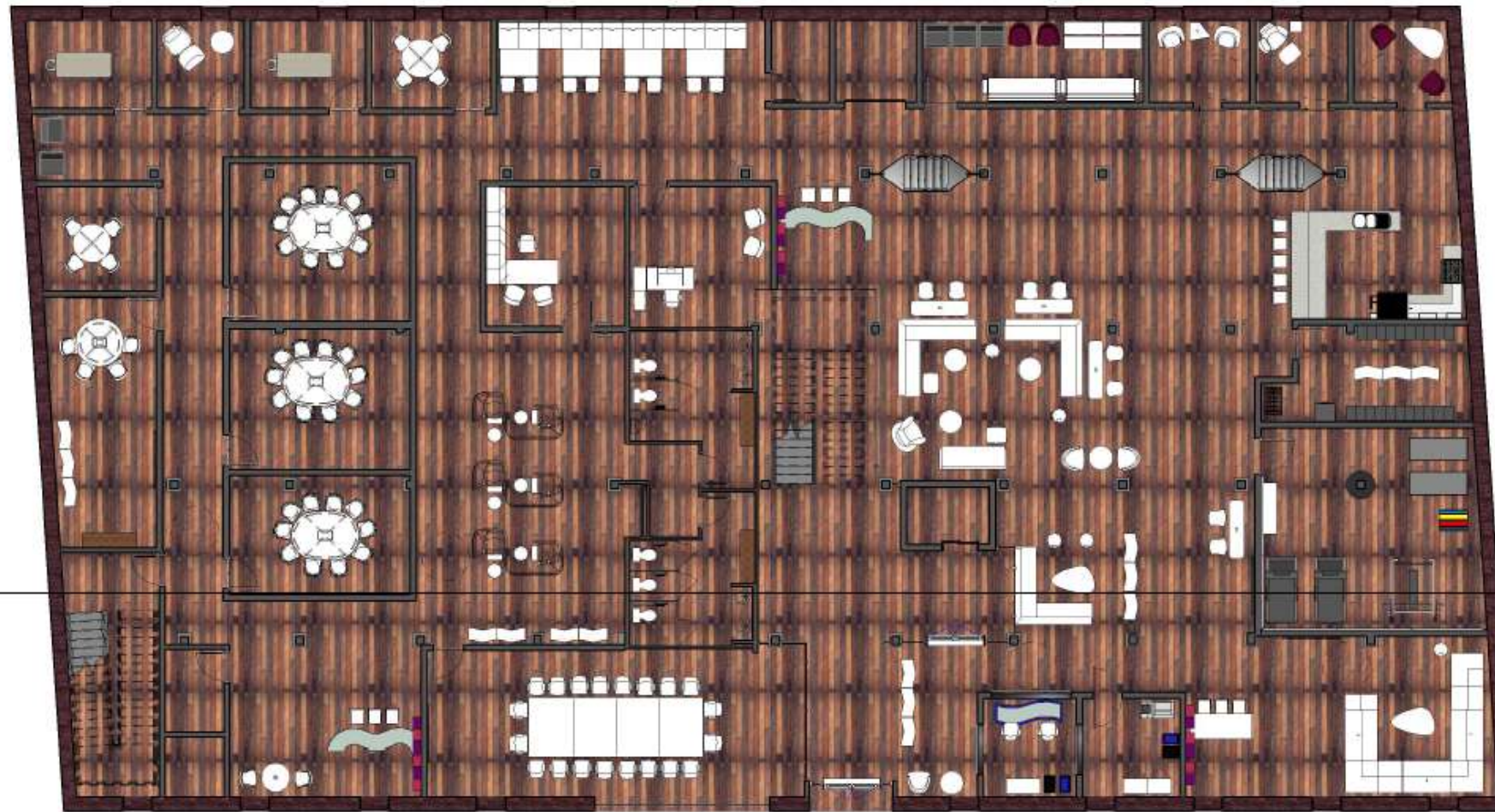
Total Furniture Finishes: \$1,013,250

Combined Total: \$3,850,350

Challenge Resolution

- **Designing a space that will be able to fit the needs of different industries without having to change the design of the workspace**
 - **Solution: Creating separate as well as open work spaces that will function for anyone renting space**
- **Creating workspaces that are unhindered by the existing columns**
 - **Solution: Utilizing the existing columns to frame work spaces and create division within the space**
- **Ensuring that there is adequate light for working, interacting and collaborating**
 - **Solution: Using light fixtures that enhance and build on natural lighting as well as creating a shield from possible glares from skylights**





① Level 1
1/16" = 1'-0"



① Level 2
1/16" = 1'-0"

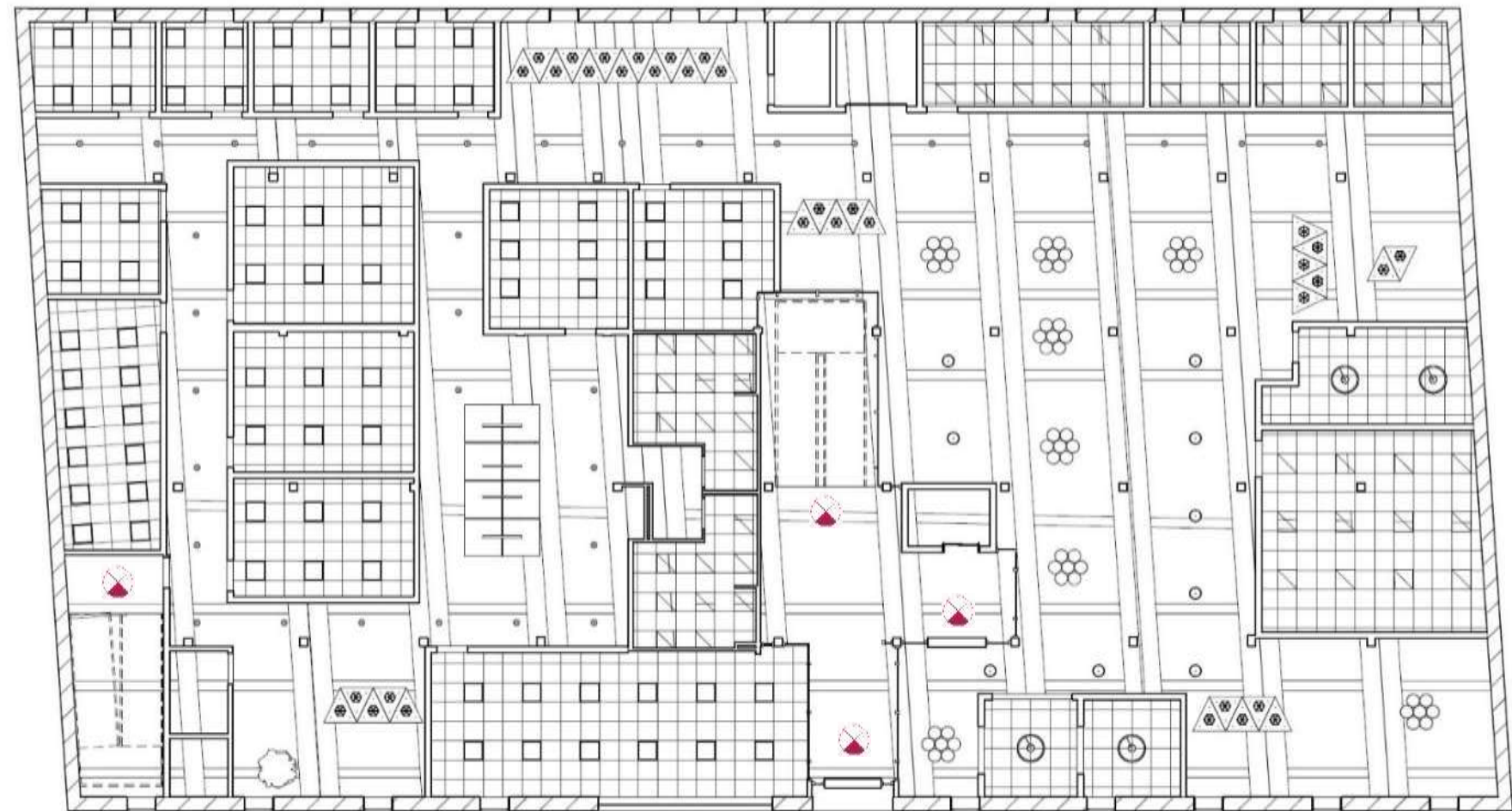
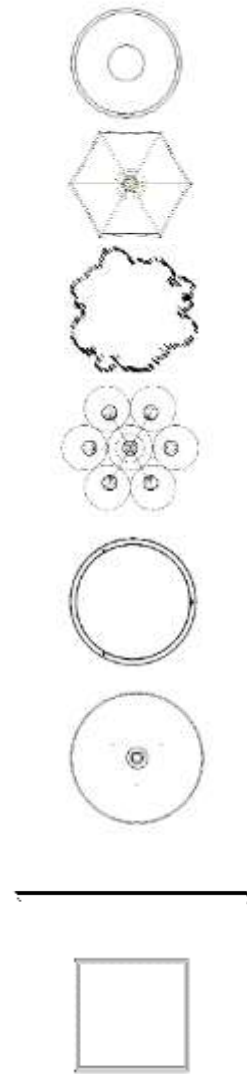




RCP LIGHTING SYMBOLS

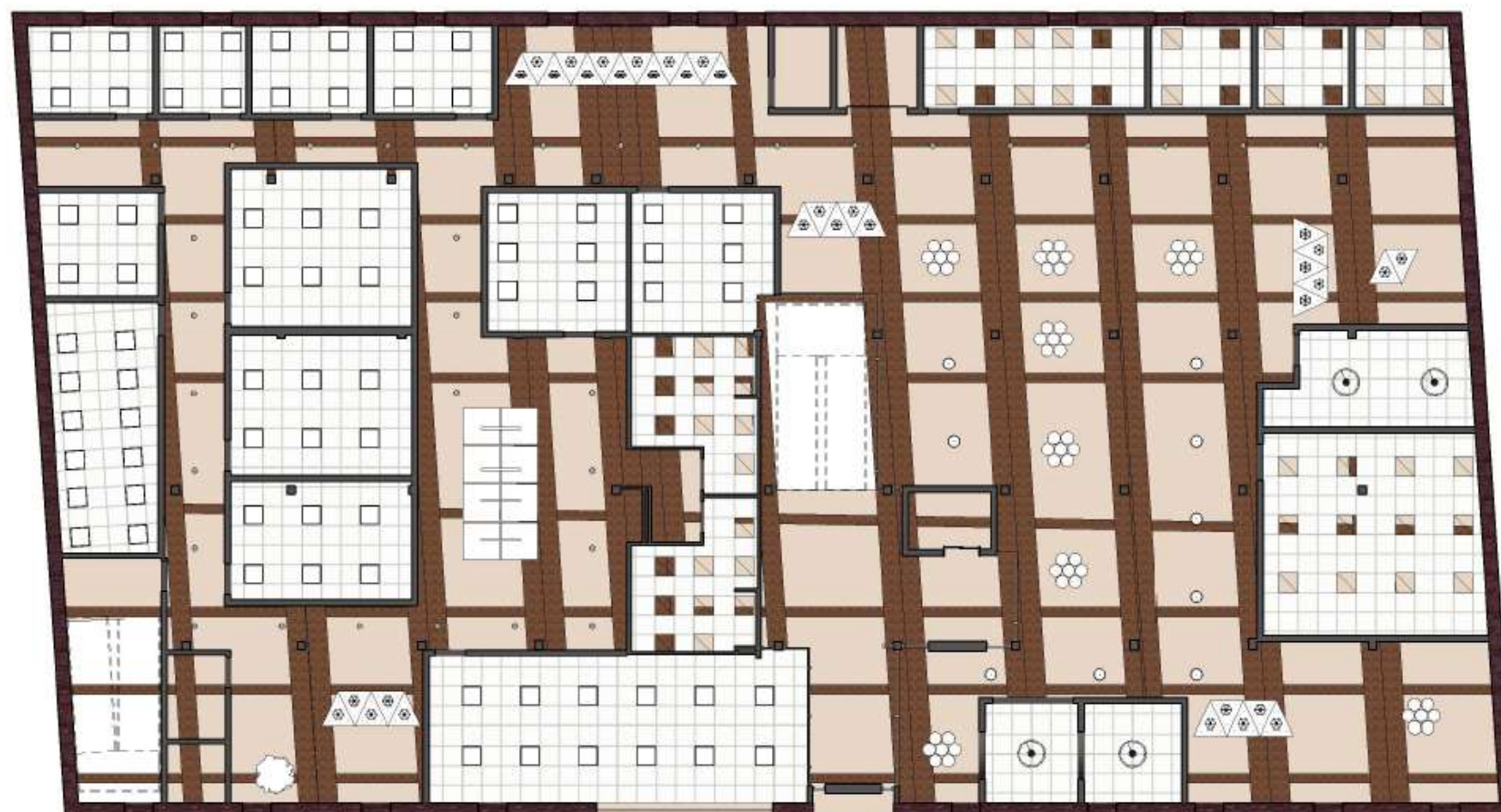
PENDANT	
WIRE PENDANT	
LEAF PENDANT	
EUREKA #1	
EUREKA #2	
EUREKA #3	
2X4 SUSPENDED	
2X2 MOUNTED	

= EGRESS

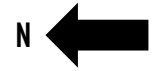


OVERALL HEIGHT = 8'

① Level 1
1/16" = 1'-0"



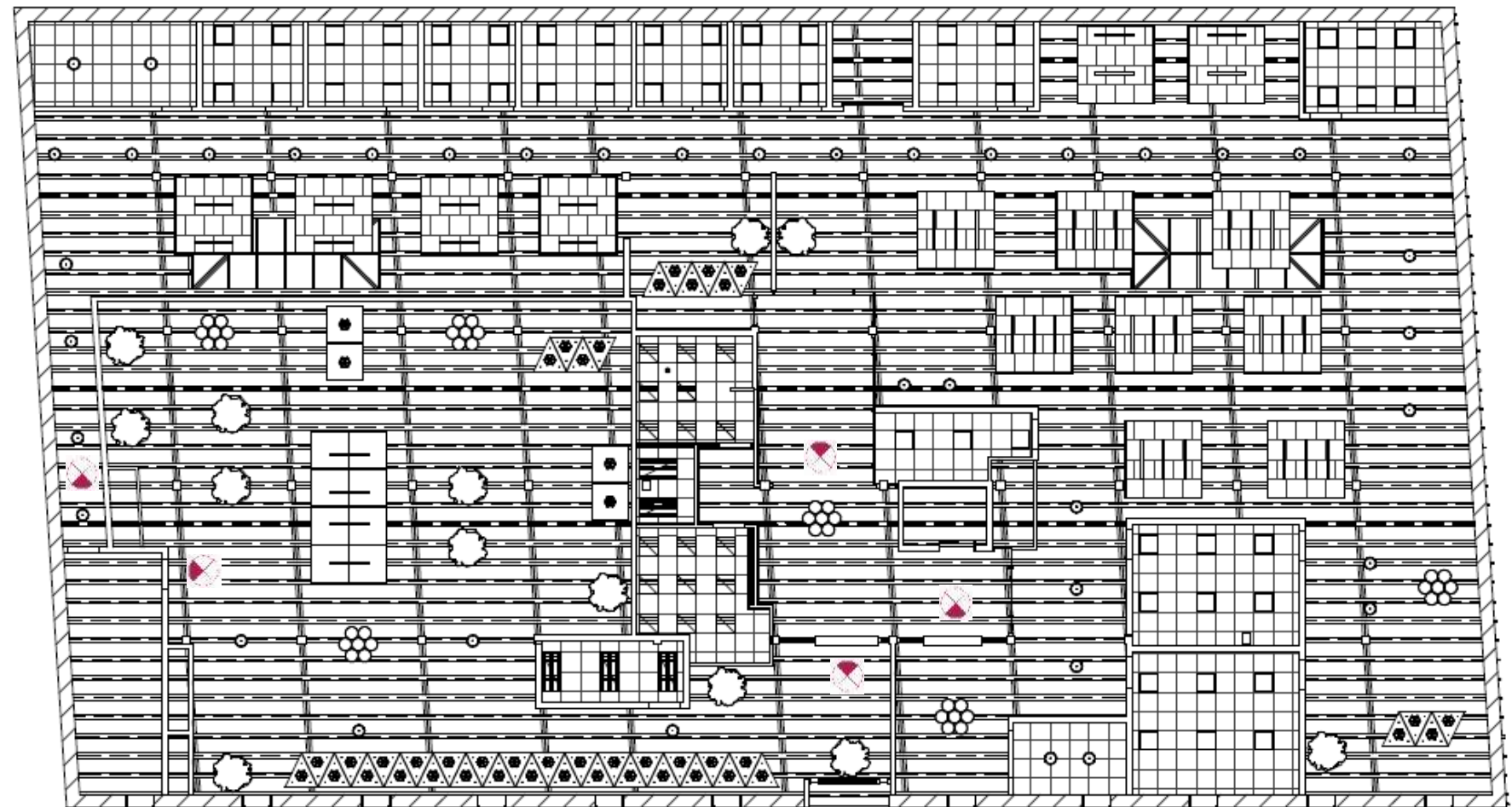
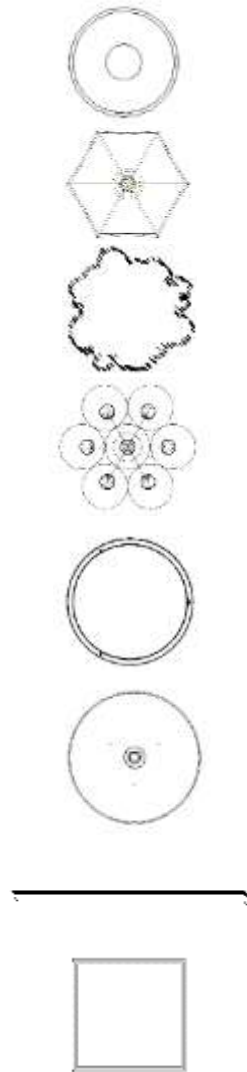
① Level 1
1/16" = 1'-0"



RCP LIGHTING SYMBOLS

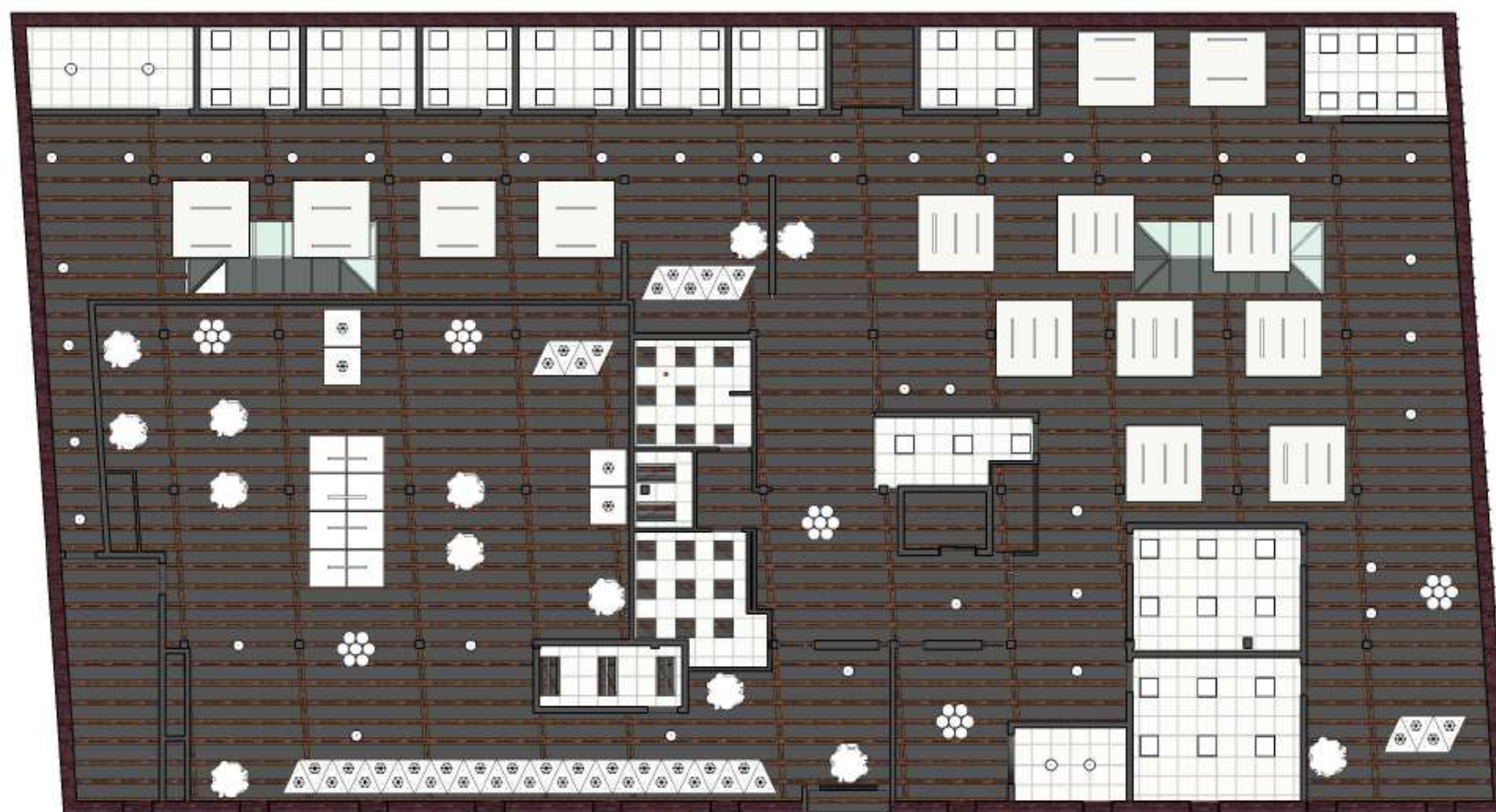
PENDANT	
WIRE PENDANT	
LEAF PENDANT	
EUREKA #1	
EUREKA #2	
EUREKA #3	
2X4 SUSPENDED	
2X2 MOUNTED	

= EGRESS



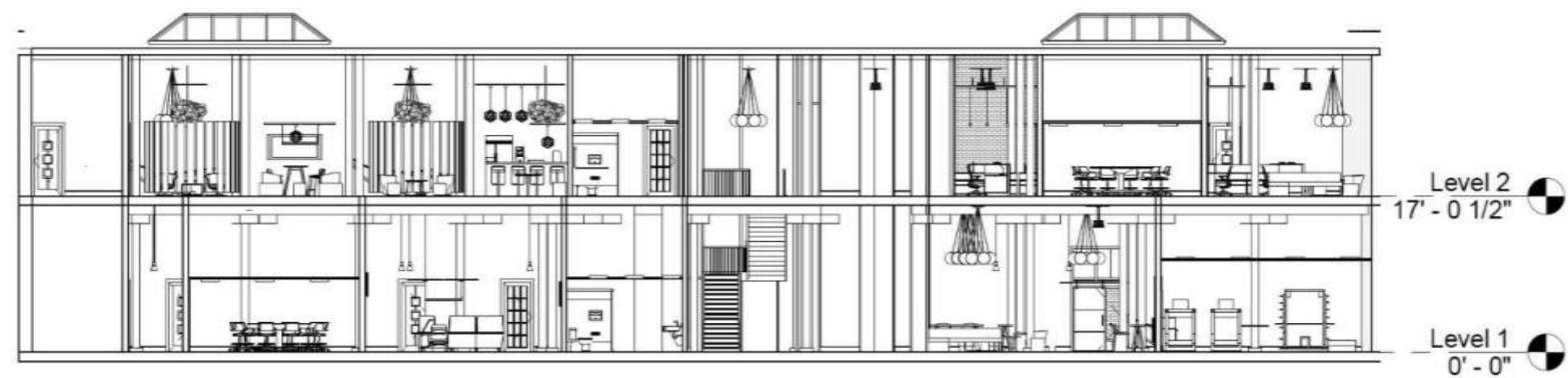
OVERALL HEIGHT = 8'

① Level 2
1/16" = 1'-0"



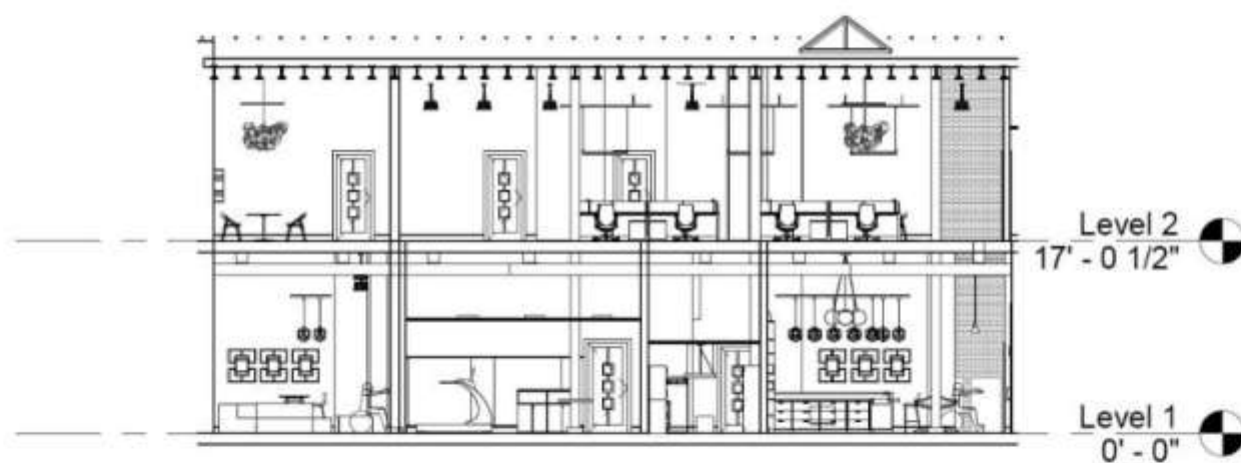
① Level 2
1/16" = 1'-0"

North - South Section



① NS
1/16" = 1'-0"

East - West Section



① EW
1/16" = 1'-0"