
METHOD
ASSOCIATES

Specialized. Functional. Engaging.

Carlee Craze

Dai Jiminez

Ally Gagliardo

Preliminary Budget Line Items

Preliminary Construction Budget

Suite 1000: 10006 SF * 140\$ = 1400840\$

Suite 2000: 7294 SF * 140\$ = 1021160\$

Suite 3000: 2965 SF * 140\$ = 415100\$

Total: 2,837,100\$

Preliminary Furniture Budget

Suite 1000: 10006 SF * 50\$ = 500300\$

Suite 2000: 7294 SF * 50\$ = 364700\$

Suite 3000: 2965 SF * 50\$ = 148250\$

Total: 1,013,250\$

Preliminary Project Budget Total:

\$3,850,350



Challenge Resolution Statement:

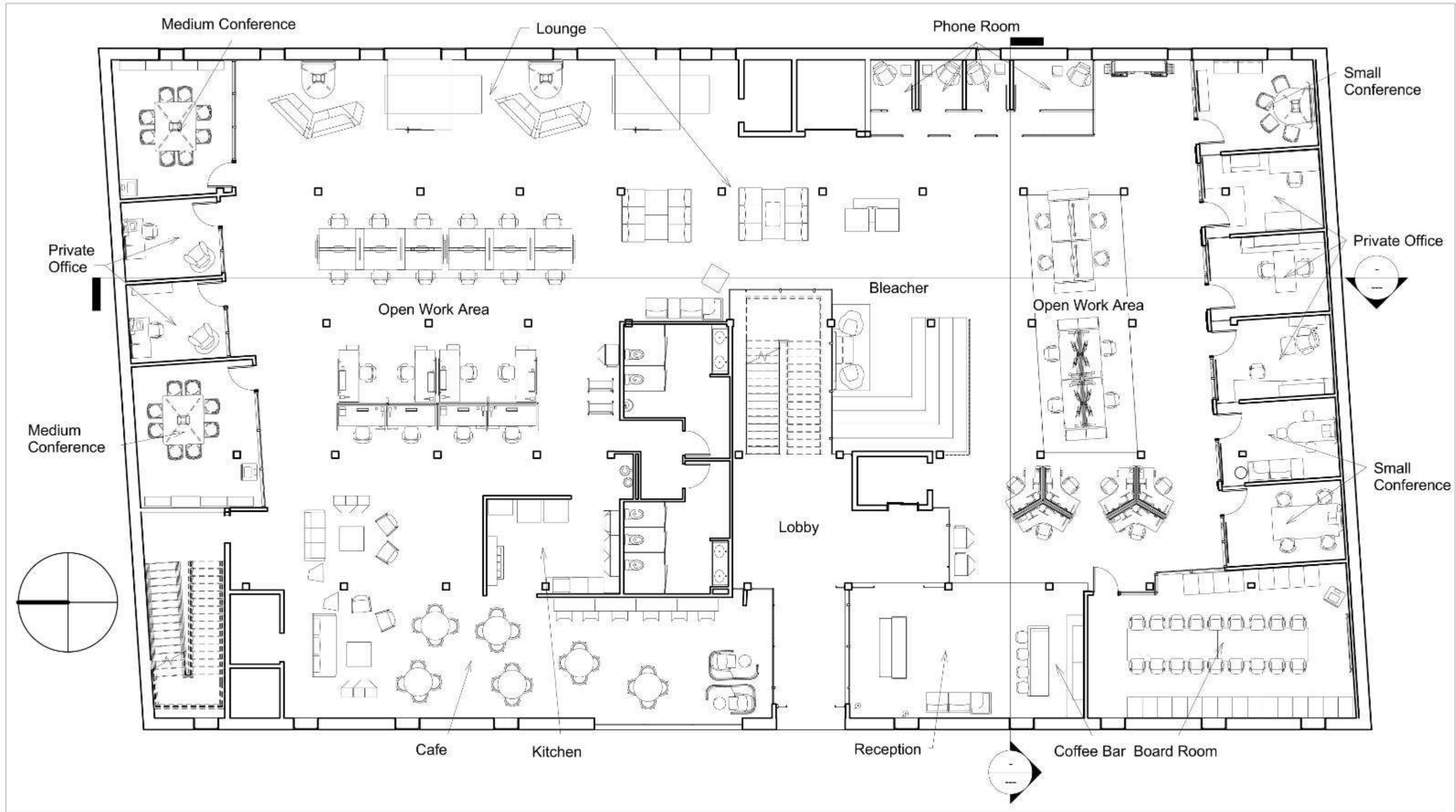
Challenges:

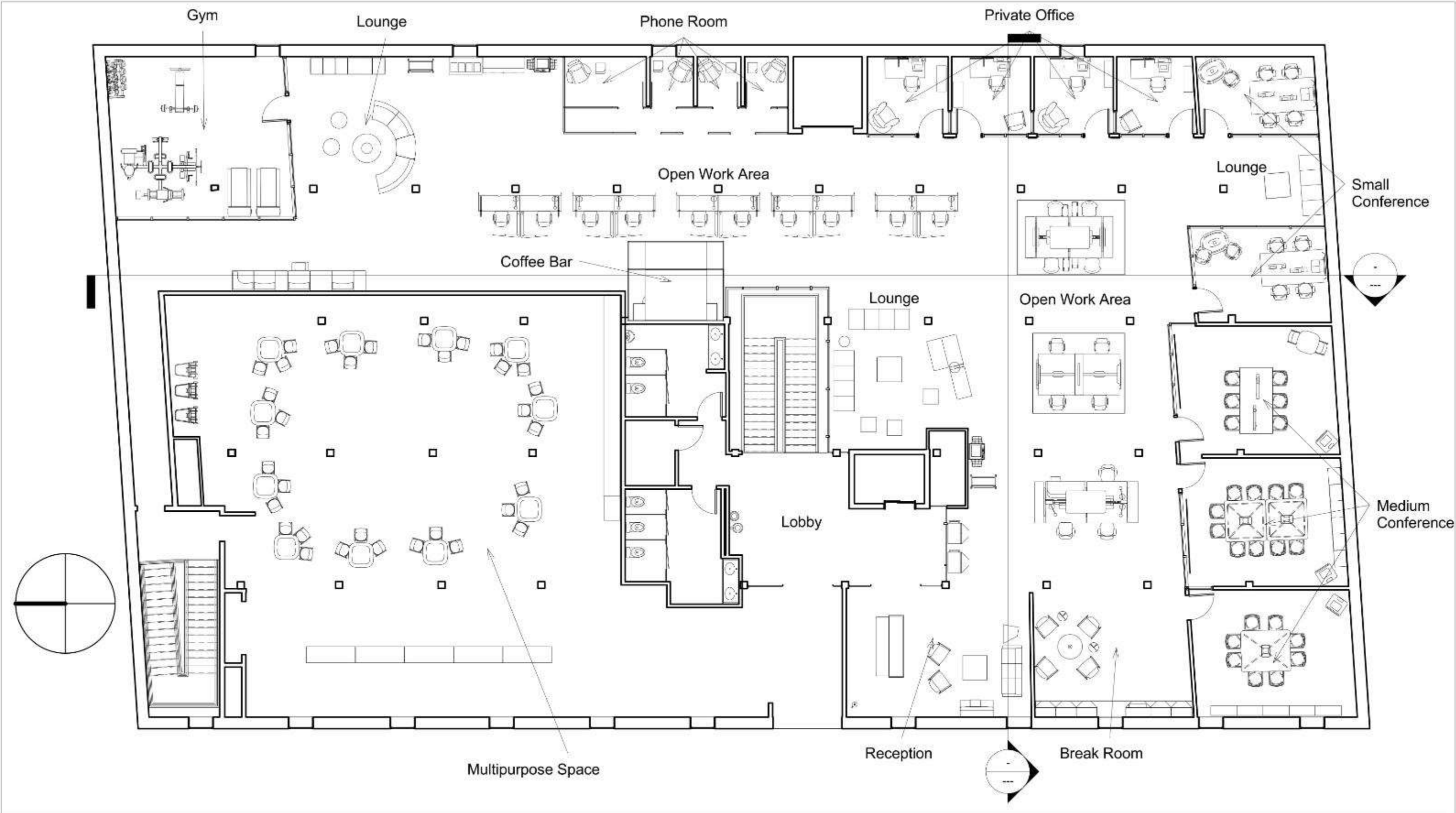
- 1) Space Planning
 - a. Many Columns disrupt the open spaces
- 2) Construction
 - a. Angle of the exterior walls
- 3) Natural Light
 - a. Windows are small – do not let in enough light
 - b. Dark Materials (brick, wood & concrete) make the space look darker
 - c. Skylight – too much light from above

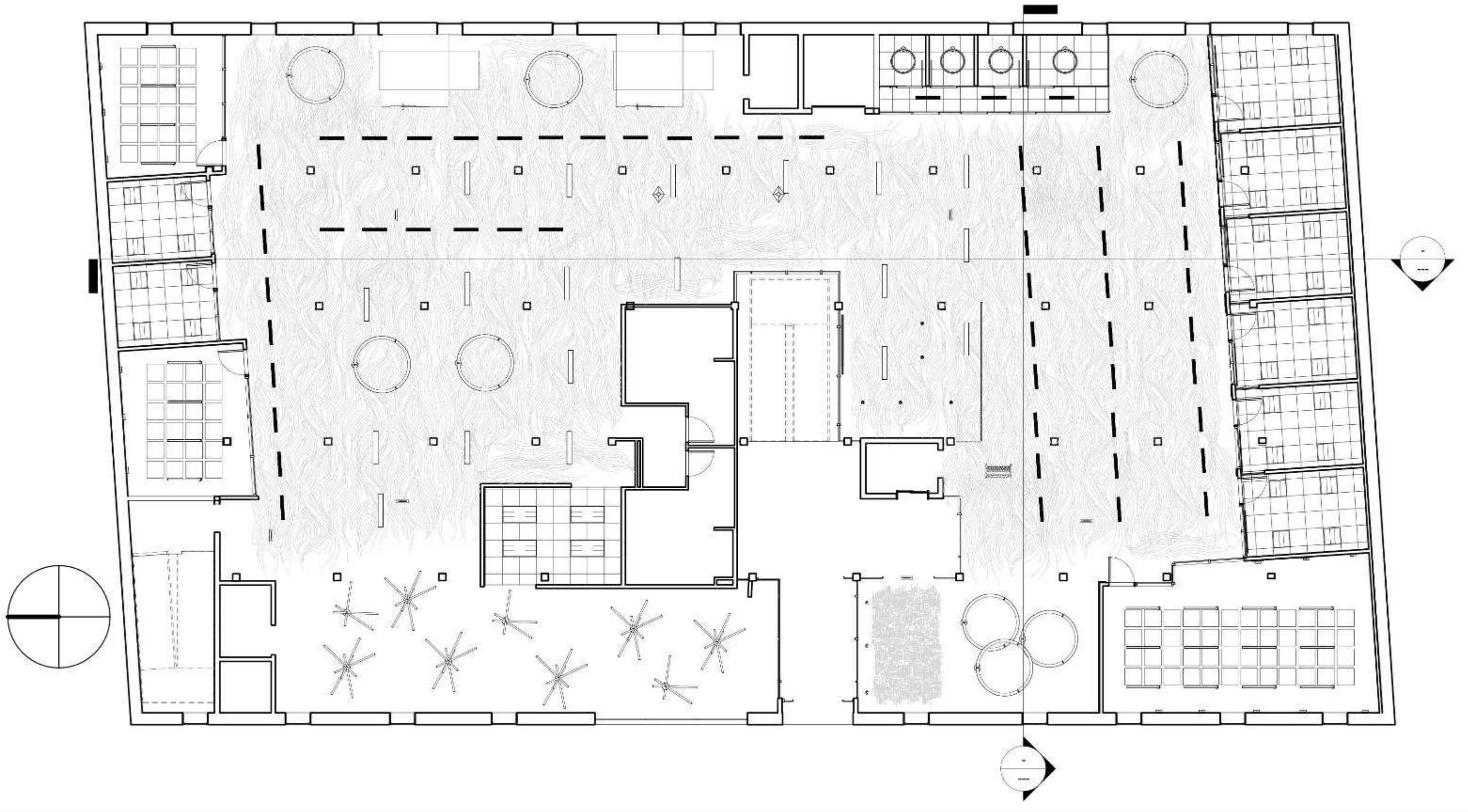
Resolutions:

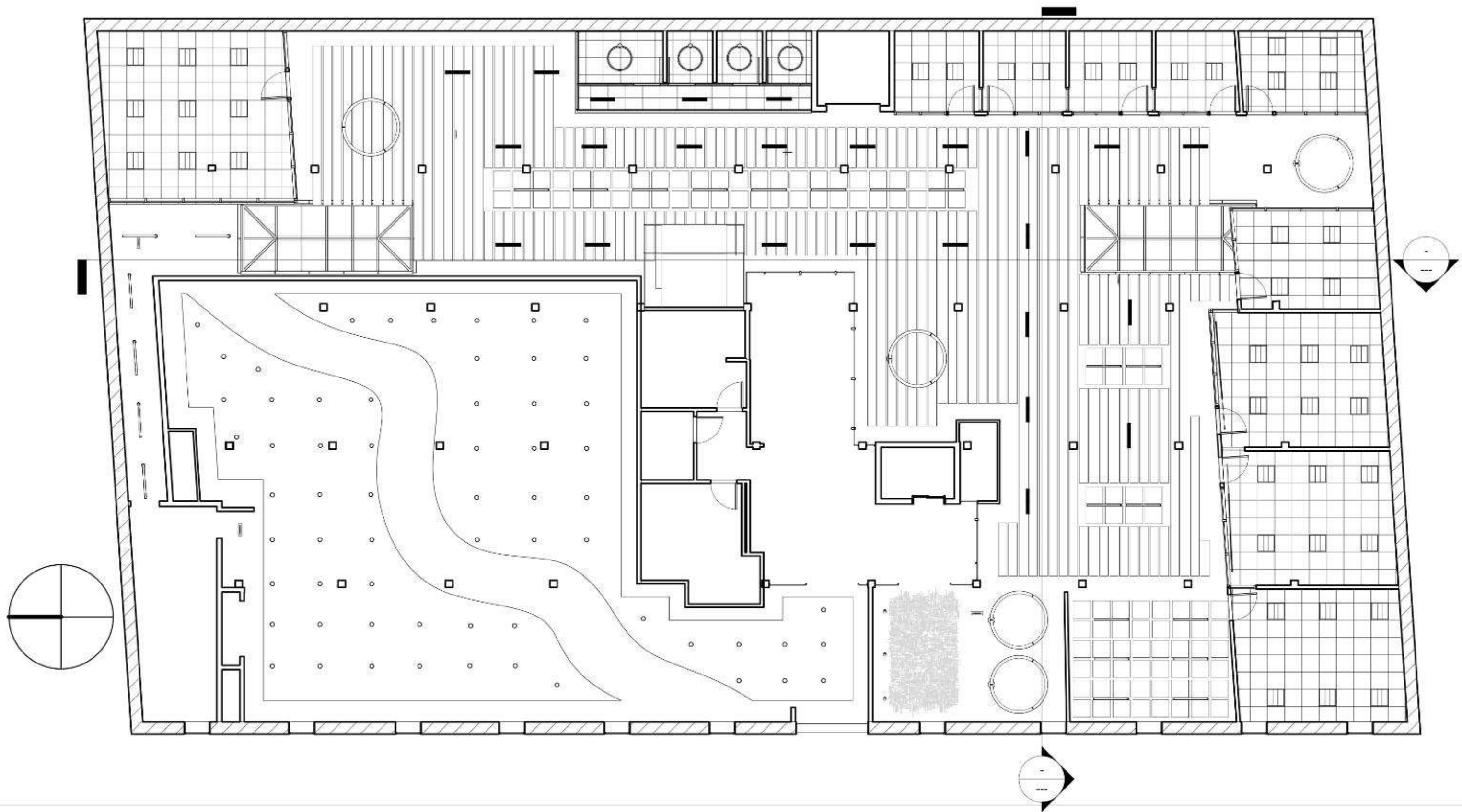
- 1) Space Planning
 - a. Smaller, private spaces between columns
 - b. Plan columns within walls to save the open spaces
- 2) Construction
 - a. Enclosed spaces on the exterior are also at an angle
- 3) Natural Light
 - a. Exterior enclosed spaces have glass on the face to allow light to come to the center
 - b. Pick light materials to reflect light
 - c. Use frosted glass or a canopy to break the light flow coming from the skylight












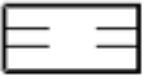






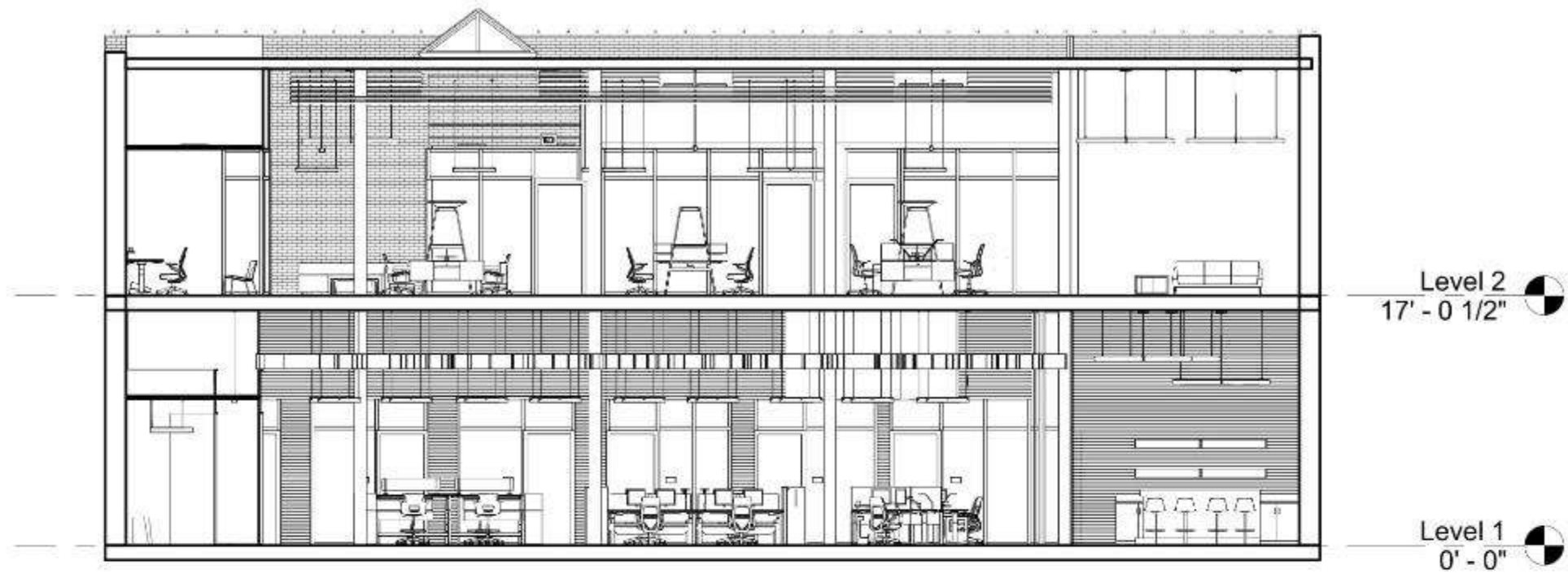




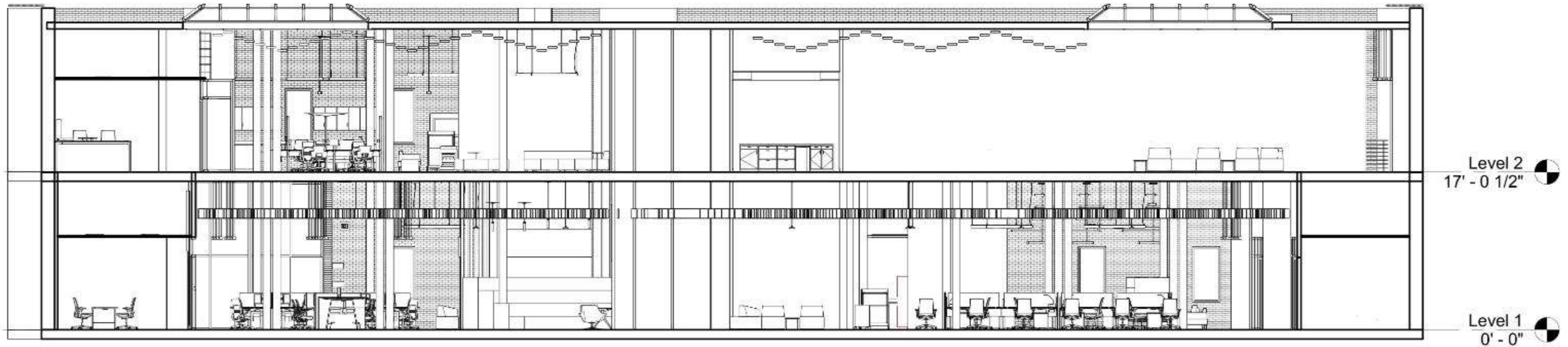


Lighting Legend

	4.5" Ceiling Suspended Downlight	Eureka – Double Flare
	3" Ceiling Suspended Downlight	Eureka – Stroke
	Ceiling Suspended Indirect	Eureka – Billow
	Ceiling Suspended Circular	Eureka – Odeon
	Ceiling Suspended Direct & Indirect Circular	Eureka – Cycle
	Ceiling Suspended Metal Pendant	Eureka – Sail
	Ceiling Suspended Glass Pendant	Eureka – Silene Classic
	Track LED	Eureka – Voxel
	2x2 Lighting Troffer	
	2x4 Lighting Troffer	
	Ceiling Suspended Direct & Indirect – 5 <u>arm</u>	Eureka – Switch
	Ceiling Suspended Direct & Indirect – 3 <u>arm</u>	Eureka – Switch
	Recessed Downlight	
	Ceiling Suspended Exit Sign	



2 Section 3
3/32" = 1'-0"



1 Section 1
3/32" = 1'-0"