

Katie Warren
Erica Holloway
Becca Culvahouse



PORTFOLIO 3

“EXCLUSIVE TRANS-FORMATIVE DESIGNS”

PRELIMINARY BUDGET:

		Prices per square footage		
		Furniture \$50	Construction \$140	Furniture + Construction= Total
1 st floor=10,068	Room 2000=7,327	\$366,350	\$1,025,780	\$1,392,058
	Room 3000=2,738	\$136,900	\$383,320	\$520,220
2 nd floor=10,062	Room 1000=10,062	\$503,100	\$1,408,680	\$1,911,708
		Total= 1,006,350	Total= 2,817,780	Total= \$3,823,986



CHALLENGE RESOLUTION STATEMENT:

Challenges:

- Parking deck - blocks optimal vision, noise is a concern
- Lighting – the sun rises on the southeast part of the building



How we plan to resolve challenges:

- Utilize the skylights and use reflective material to bring in more natural light to a dark space

————— SUNSET
orange line

————— SUNRISE
yellow line





MULTI
320 RONEY STREET
DURHAM, NC

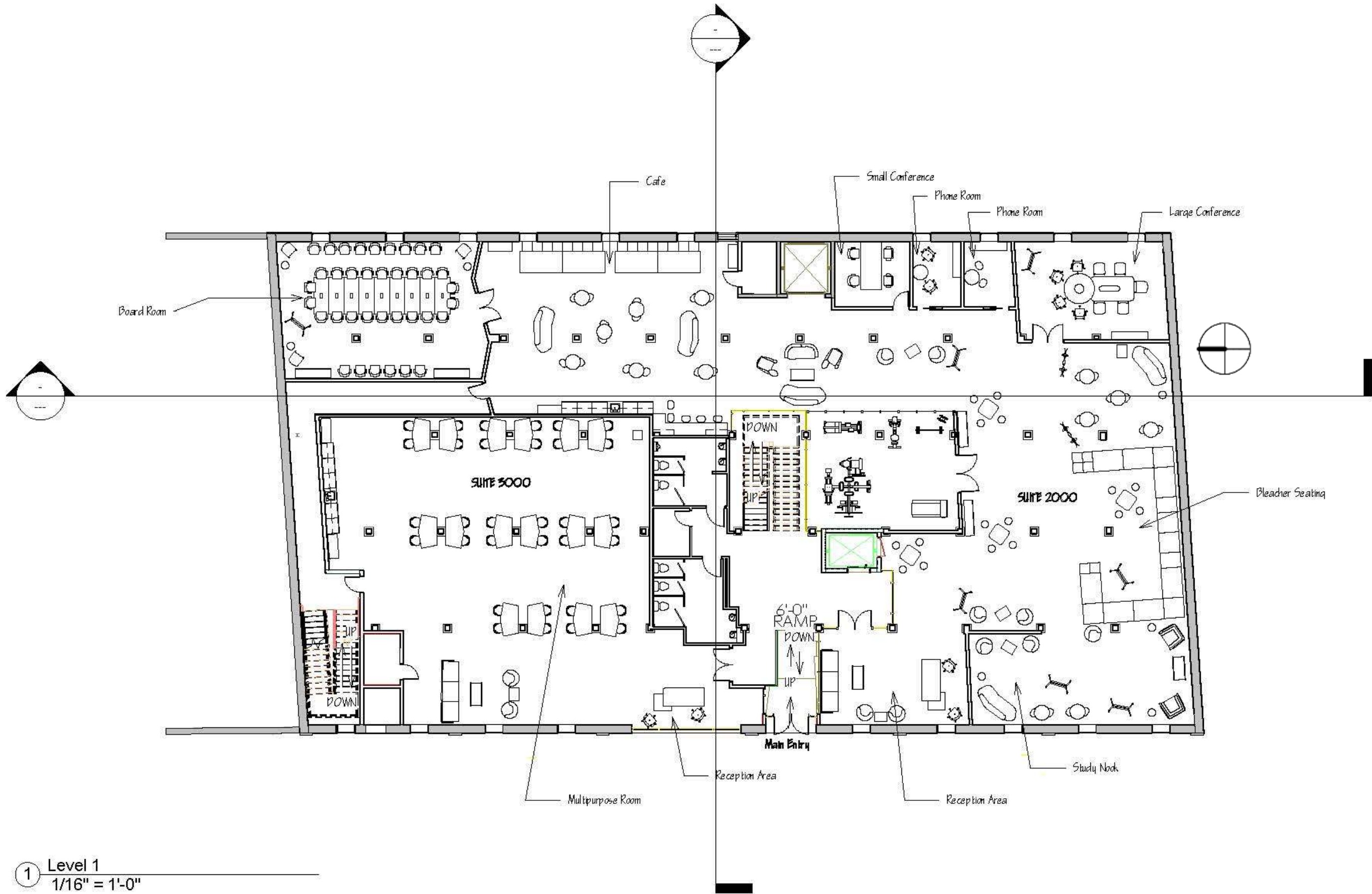
INTERIOR DESIGN PROGRAM
EAST CAROLINA UNIVERSITY

Owner

DATE
4/10/18

SCALE
1/16" = 1'-0"

SHEET
F101



1 Level 1
1/16" = 1'-0"



MULTI
320 RONEY STREET
DURHAM, NC

INTERIOR DESIGN PROGRAM
EAST CAROLINA UNIVERSITY

Owner

DATE

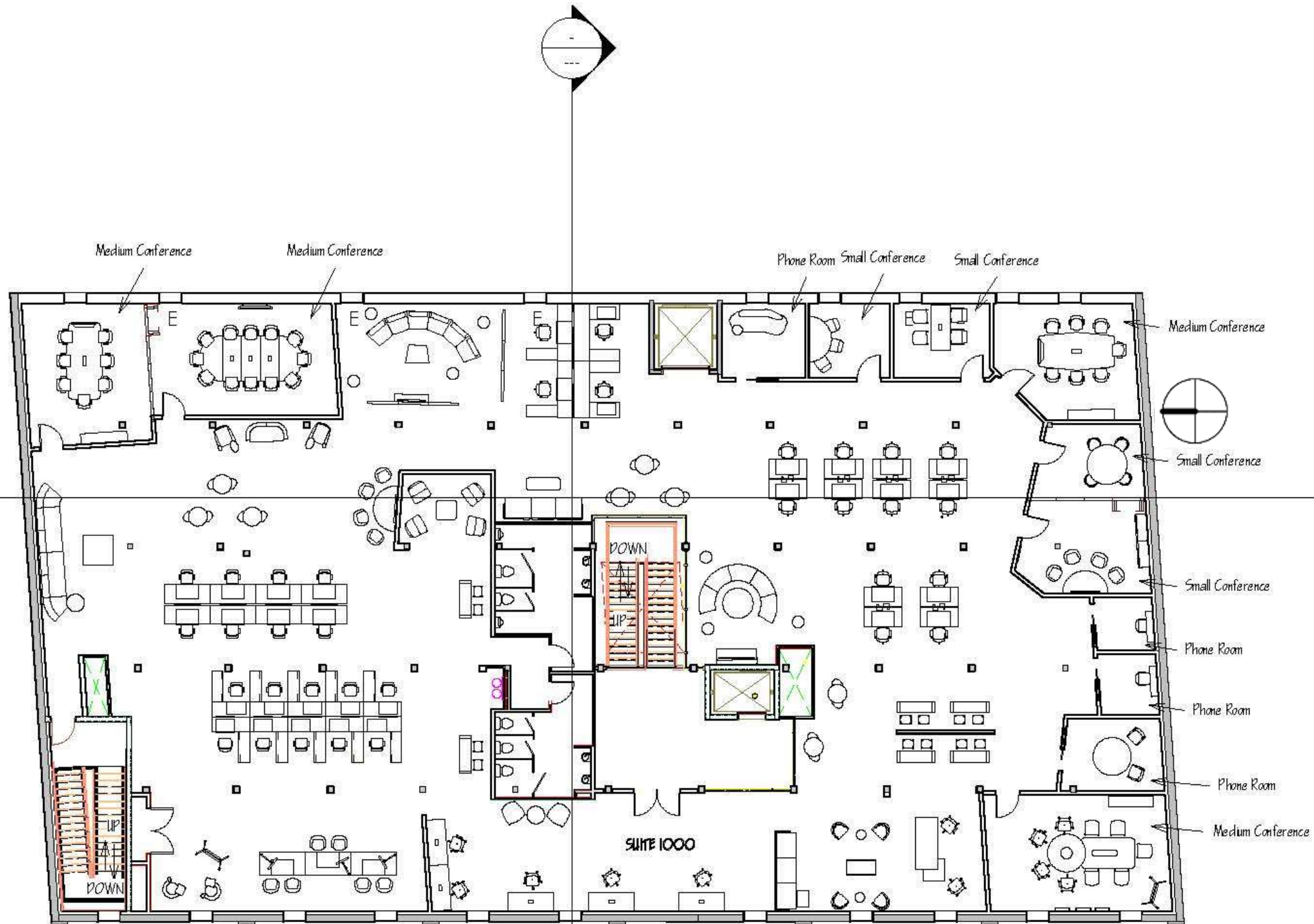
4/10/18

SCALE

1/16" = 1'-0"

SHEET

F102



① Level 2
1/16" = 1'-0"



MULTI
320 RONEY STREET
DURHAM, NC

INTERIOR DESIGN PROGRAM
EAST CAROLINA UNIVERSITY

Owner

DATE
4/10/18

SCALE
1/16" = 1'-0"

SHEET
R101

LIGHTING SYMBOLS

2' x 2' PANELS

4' CURVED SUSPENDED PANELS

2' X 5' LINEAR PANELS

CIRCULAR HANGING PENDANTS



1 Level 1
1/16" = 1'-0"

LIGHTING SYMBOLS

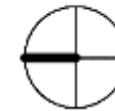
———— 4' CURVED SUSPENDED PANELS

——— 2' X 5' LINEAR PANELS

⊕ CIRCULAR HANGING PENDANTS

———— 4' X 5' LINEAR PANELS

◊ 54"W CURVED SUSPENDED



① Level 2
1/16" = 1'-0"



MULTI
320 RONEY STREET
DURHAM, NC

INTERIOR DESIGN PROGRAM
EAST CAROLINA UNIVERSITY

Owner

DATE

4/18/18

SCALE

1/16" = 1'-0"

SHEET

R 102



MULTI
320 RONEY STREET
DURHAM, NC

INTERIOR DESIGN PROGRAM
EAST CAROLINA UNIVERSITY

Owner

DATE

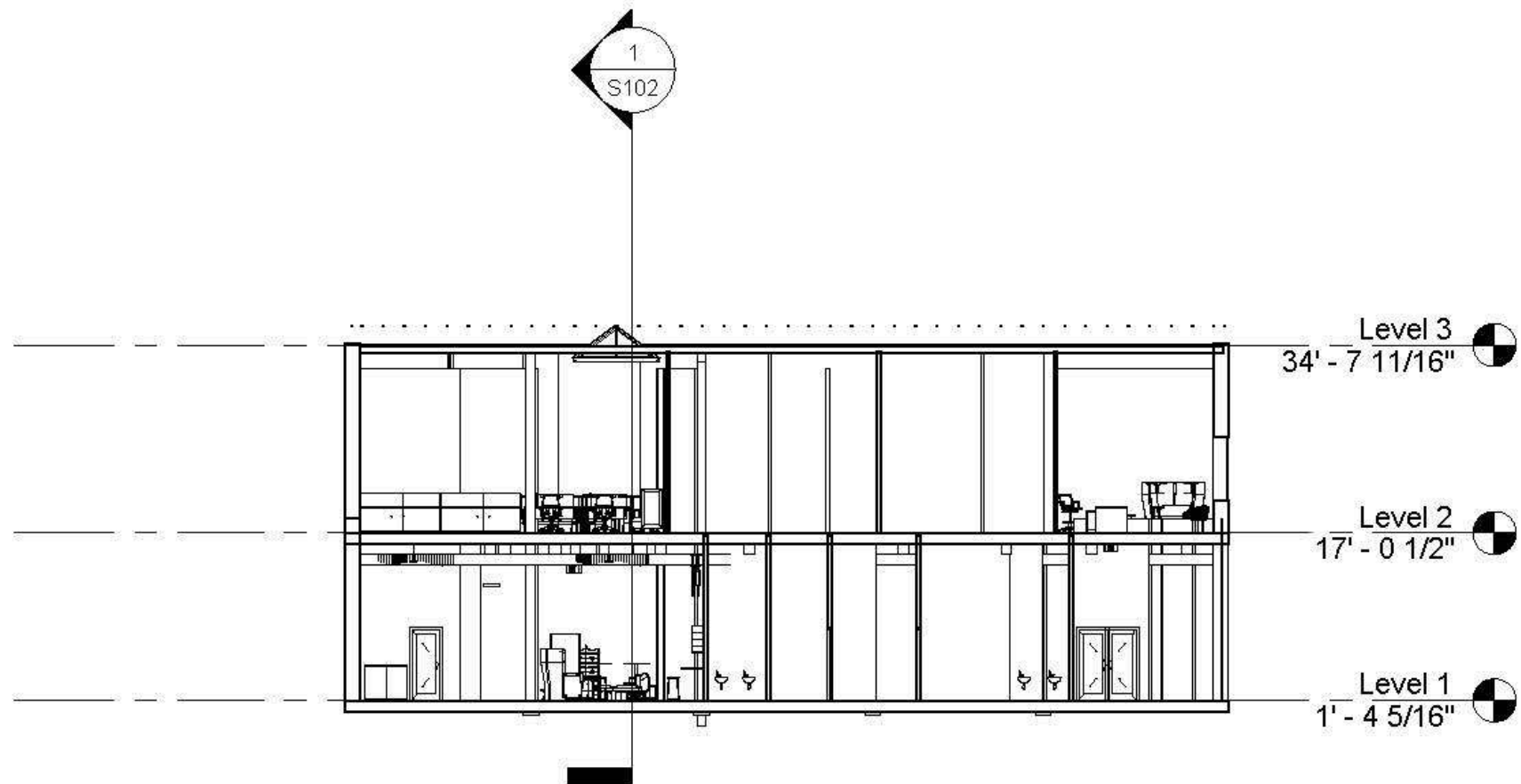
4/10/18

SCALE

1/16" = 1'-0"

SHEET

S101



① Section 1
1/16" = 1'-0"



MULTI
320 RONEY STREET
DURHAM, NC

INTERIOR DESIGN PROGRAM
EAST CAROLINA UNIVERSITY

Owner

DATE

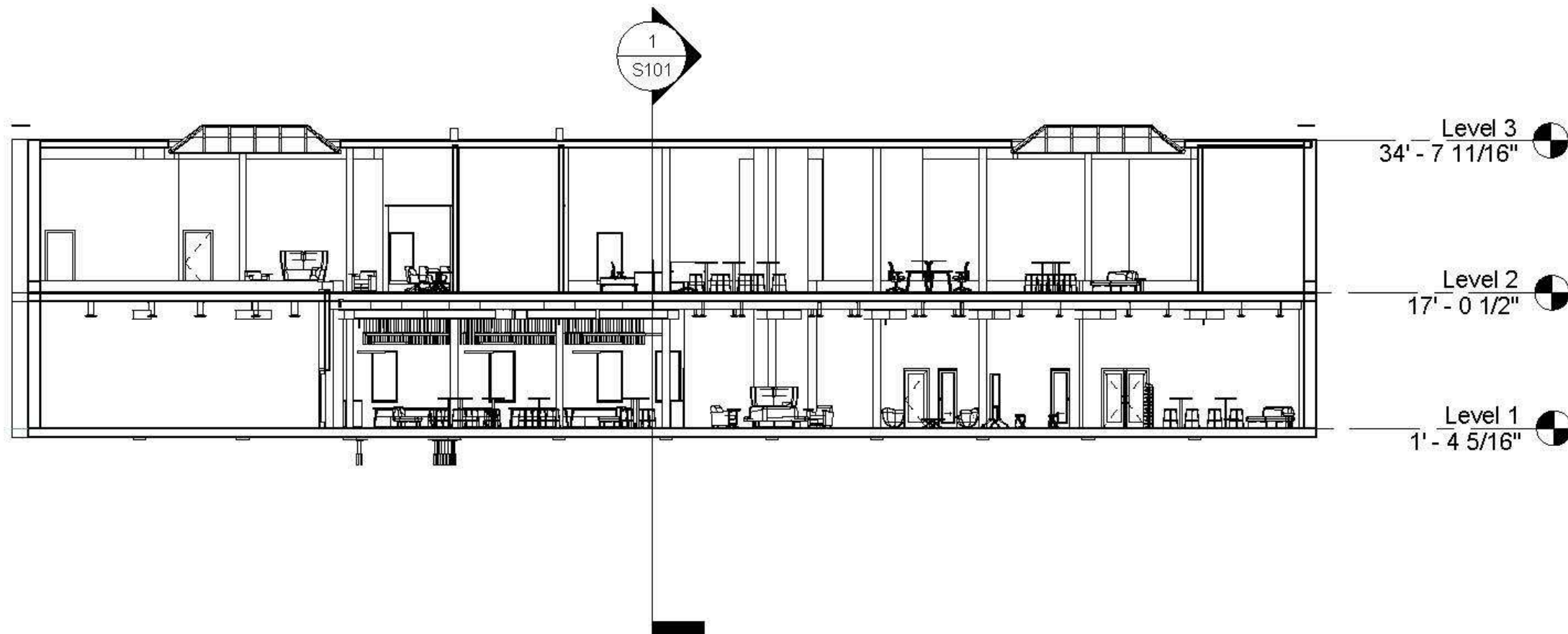
4/10/18

SCALE

1/16" = 1'-0"

SHEET

S102



① Section 2
1/16" = 1'-0"