



31NONE

DESIGN TEAM

Jennifer Guzman, Amanda Hill, Amy Stasuk

LOCATION RESEARCH

Neighborhood/Town History:

In 1771, the North Carolina Colonial Assembly authorized Richard Evans to form a town by dividing his 100-acre plantation, situated south of the Tar River. The town was called Martinsborough for the royal governor at the time, Josiah Martin.



Why is Greenville located where it is?

In 1774, the town was moved to its present location on the south bank of the Tar River, three miles west of its original site. The Tar River was a navigable waterway; and by the 1860s there were several established riverboat lines transporting passengers and goods.



How did it become important?

Cotton was the leading agricultural crop, and Greenville became a major cotton export center.



LOCATION RESEARCH

Why is ECU located where it is?

The State Board of Education toured eight cities in NC seeking a good location for East Carolina. On June 10, 1907 the SBE voted on the location of the school. On the first vote Kinston received three votes, Rocky Mount received two votes and Greenville received one vote. On the second vote, all three locations received two votes. On the last and final vote, Greenville received four votes to Kinston two votes.

How did it become important?

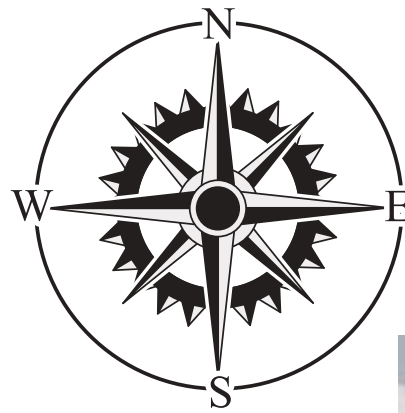
In 1907, the North Carolina legislature established the East Carolina Teachers Training School, and with its opening in 1909, Greenville became the educational and cultural center of Eastern North Carolina.



SITE INFORMATION

NORTH - no direct light, little heat

SOUTH - minimal heat/light in the summer
and some heat/light in the winter



EAST - morning light, some heat

WEST - afternoon light, more intense heat



PROGRAM

Number of Offices and Sizes? 8 staff and 2 accountants. Needs at least 10 private offices. Small offices are ideal, but need open workstations. Need space for interns and part-time students.

Number of Open Workstations and Sizes? Open area for working and brainstorming. Not too crowded.

Number of Meeting Rooms and Number of Persons per Room? A couple meeting rooms that hold 12-14 people as well as a multipurpose meeting room for the alumni board meetings (40 people.)

Storage Requirements:

Rooms/Sizes? At least a 10x12 storage room. Needs to be easily accessible.

Closets? Need shelving for labelled bins as well as space to store signage.

Filing Drawers? Not many... 1 or 2 in an office.

Reception:

How Many Receptionists? 1

How Many Visitors? Currently 5-6 people a day, but hopefully more in the new space.

Any Storage or Display? Want a "Welcome Center" area.

Special Spaces: Sizes and Functions? "Record Your Story Booth" near the exhibition area for alumni to sit down and record any stories that have from their time at ECU. Also want a showcase area in the exhibition for people to loan items from their time at ECU for it to be on display.

Special Restrooms (other than building restrooms)?

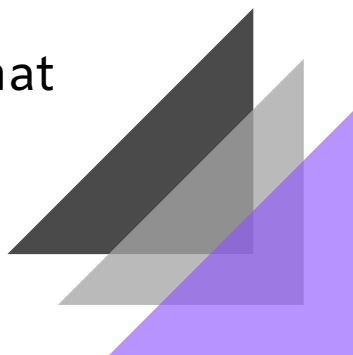
Just expand the current bathrooms.

Pantry or Coffee Station and Equipment? Coffee bar upstairs in lobby and break room with a small café downstairs.

Computer Room and Size? Touch screens in the exhibition area for people to research (Alumni Research Stations.) Also areas in lobby to update your alumni info.

Lounge and Size? Lounge that also has areas to work in groups. Open concept.

Event Space and Size? Multi-purpose event space that can hold many different sized events.



PROGRAM

Current Space	Level	Square Ft.	Future Space	Square Ft.	Occupancy Type (Future space)	Maximum Occupancy	Means of Egress	Notes
Laboratory	Lower	936	Women's toilet	720				Plumbing walls, to match men's
Computer lab, office	Lower	705	Men's toilet	705				Plumbing walls, to match women's
Classrooms and storage	Lower	1476	Break room	1476	A-2	98	2	Corridor wall to be curtain wall?
Mechanical room	Lower	394	Elevators	347				To match 2nd Level
Offices	Lower	2135	Kitchen	1453	A-2	7	2	Same layout, renovated finishes and furniture
Supply room	Lower	1374	Meeting and Seminar Rooms	1175	A-3	78	2	
Gymnastics	Lower	4370	Alumni lounge	4370				
Student dressing room	Lower	2365	WWII Memorial space	1321	A-3	44	2	
Military lab and storage	Lower	1071	ECU football history	1071	A-3	35	2	
Activity lab/storage	Lower	1561	Offices	1561	B	52	2	
Corridor Total	Lower	2244	Corridor Total	2990				
Mechanical room	Lower	394	Vestibule	218				
Lobby	Upper	1518	Lobby	2324				Corridor wall removal?
Women's toilet, offices	Upper	706	Women's toilet	706				plumbing wall aligned with 1st story toilets's
Men's toilet, offices	Upper	712	Men's toilet	712				
Pool storage	Upper	413	Curator's office	413	B	4	1	
Grandstand storage	Upper	275	Elevators	397				To match 1st level
Grandstand	Upper	1974	Storage/serving stations	1804				Windows interfere with floor slab?
Gymnasium	Upper	12003	Event space	12003	A-2	1714	4	
Pool	Upper	2925	Exhibition space	2925	A-3	98	2	
Lobby Corridor	Upper	1518	Lobby Corridor	2359				
Storage	Upper	396	Vestibule	218				
			Mechanical Room (3)	300				



CONCEPT STATEMENT

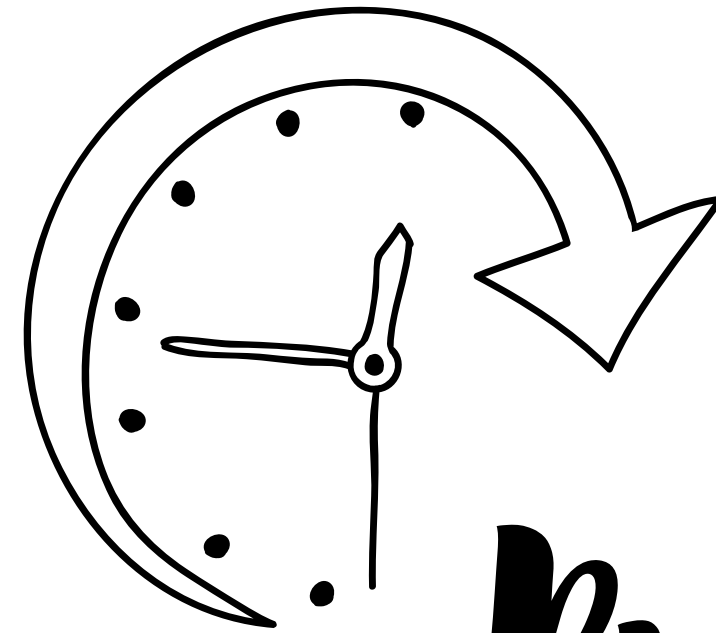
ALUMNI CENTER

The design will focus on the idea of bringing the past together with the present, as well as looking towards the future. This remodel will cater to the alumni of ECU.

PAST: The Christenbury Memorial Gym was built in 1952 as a memorial to alumni who lost their lives in WWII, so this Alumni Center will preserve the history in many different spaces.

PRESENT: The "present" schematic will focus on current alumni and bringing them in for events.

FUTURE: The lobby will exhibit future plans.



PAST

Present

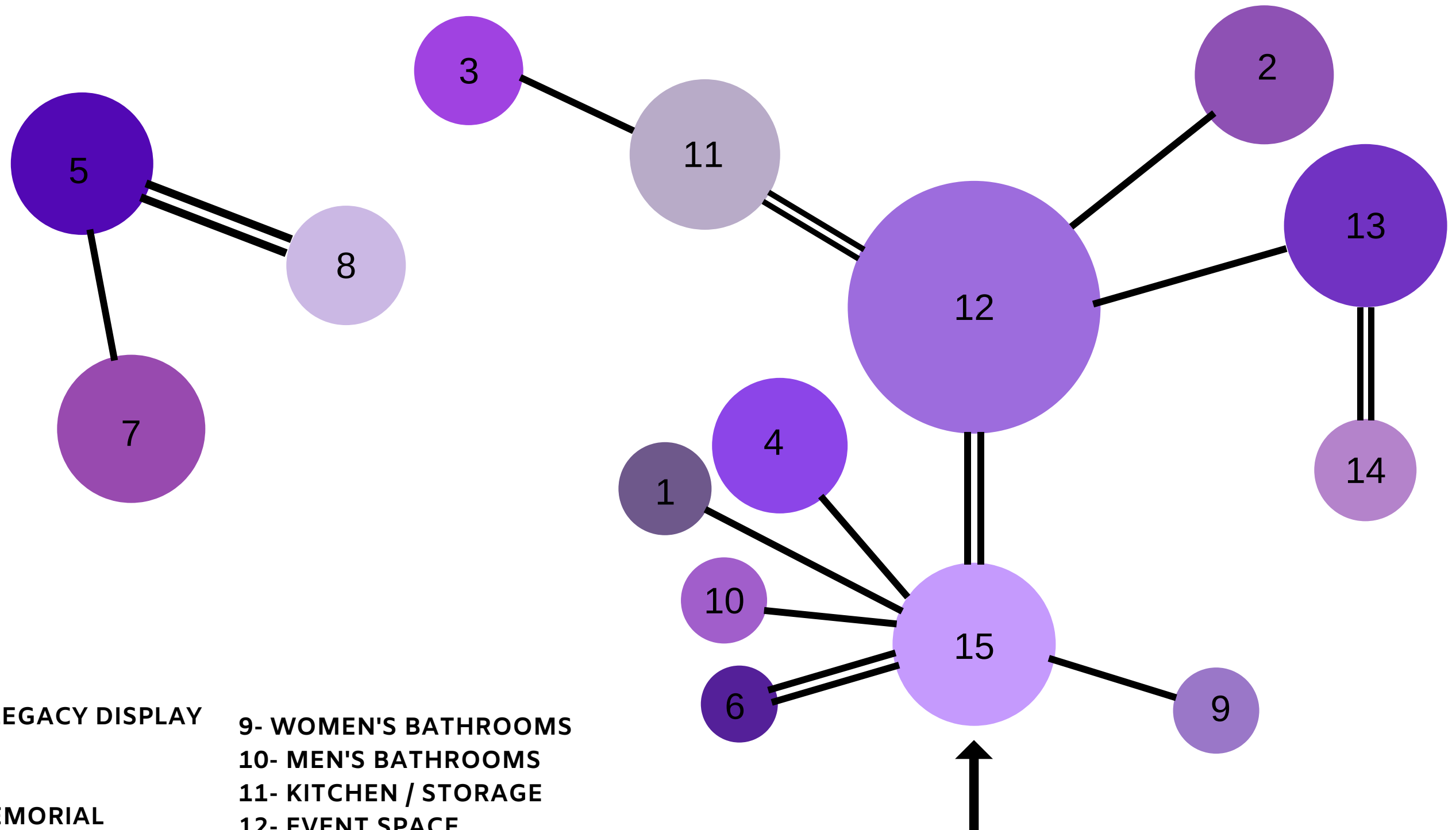
FUTURE



INSPIRATION IMAGES



BUBBLE DIAGRAM



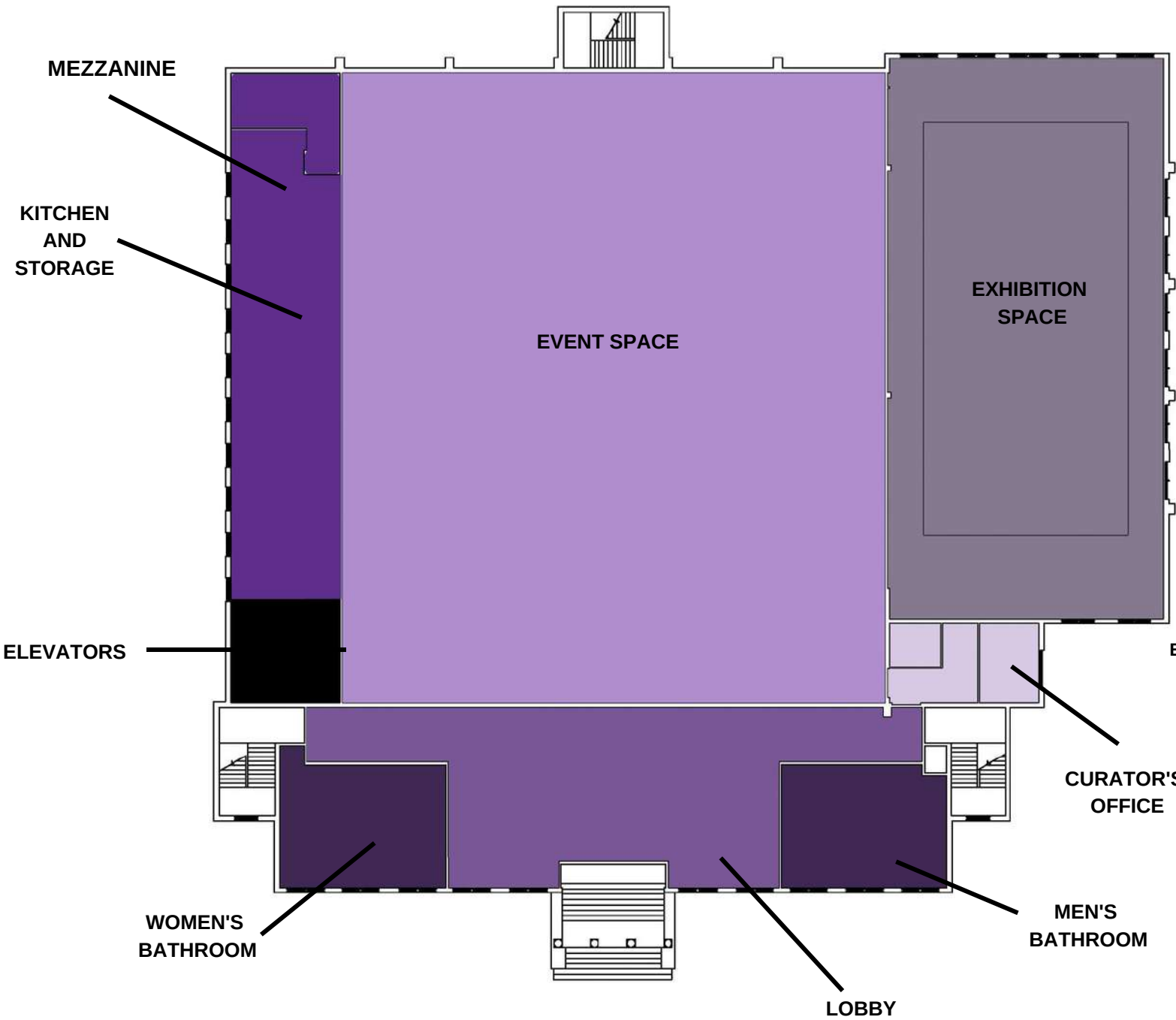
1 - ECU FOOTBALL LEGACY DISPLAY
2- ALUMNI LOUNGE
3- STORAGE
4- WWII ALUMNI MEMORIAL
5- OFFICES
6- ELEVATORS
7- CONFERENCE ROOMS
8- BREAK ROOM

9- WOMEN'S BATHROOMS
10- MEN'S BATHROOMS
11- KITCHEN / STORAGE
12- EVENT SPACE
13- EXHIBITION SPACE
14- CURATOR'S OFFICE
15- LOBBY

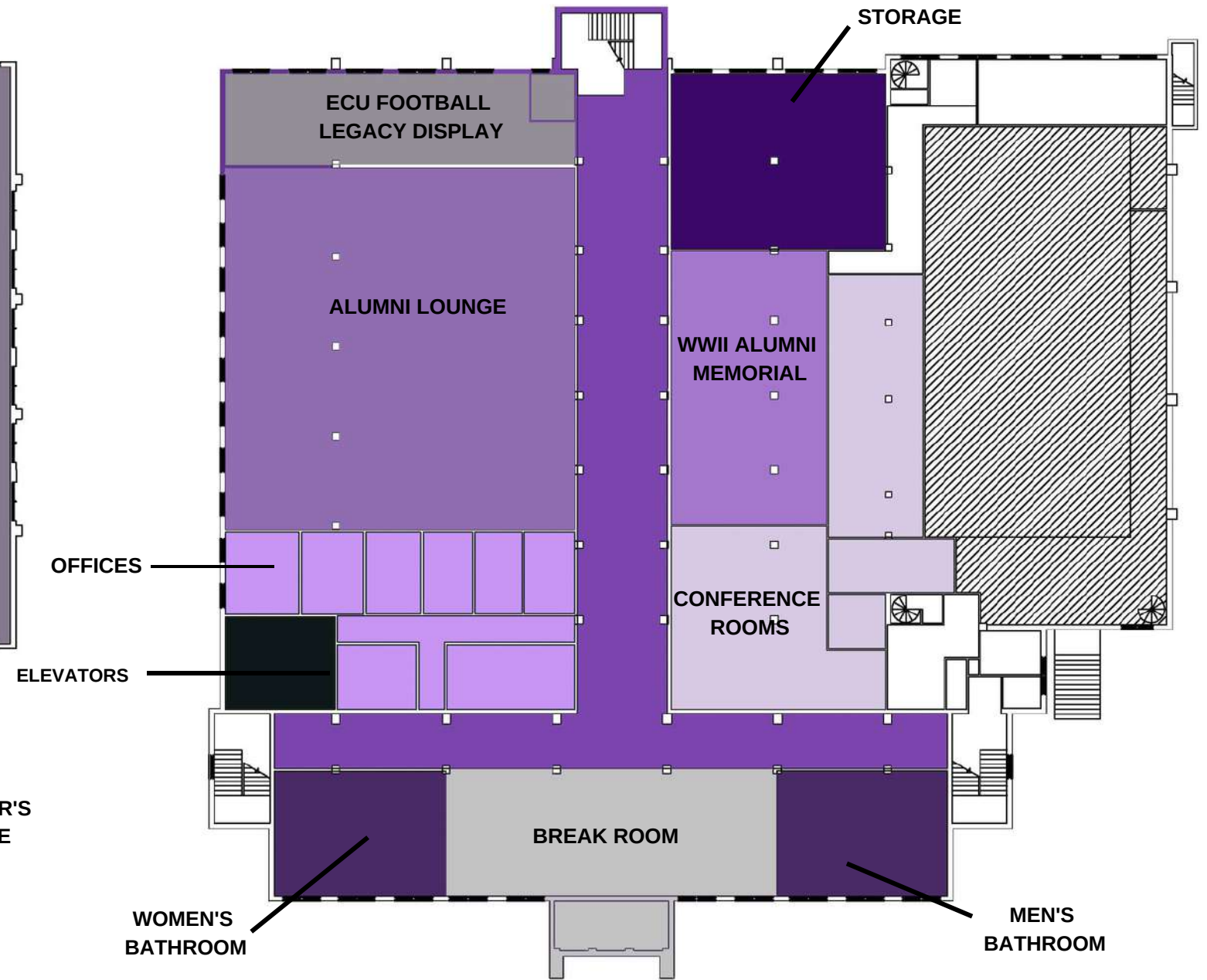


BLOCK DIAGRAM

First Floor



Ground Floor

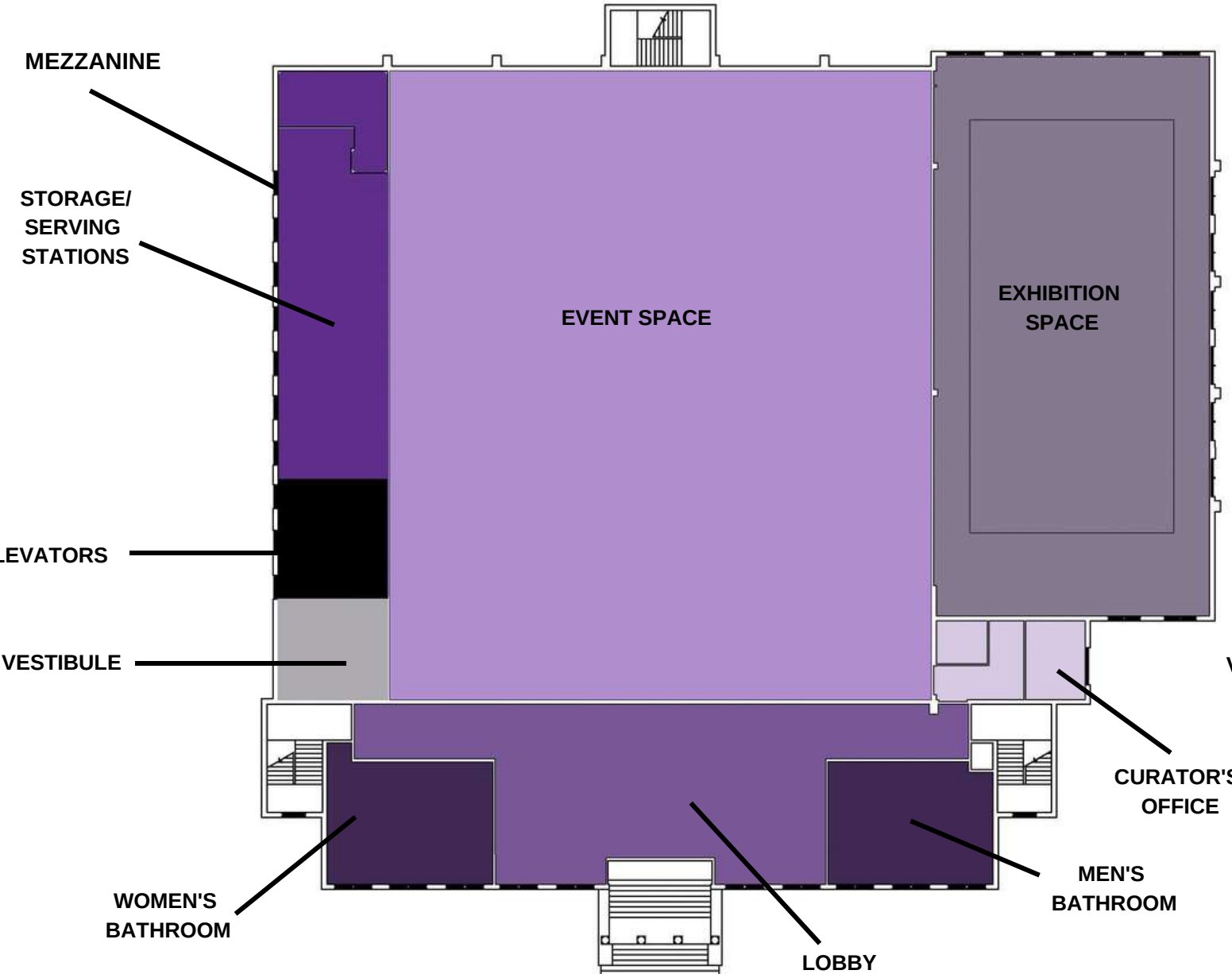


First Option



BLOCK DIAGRAM

First Floor



Ground Floor



Final Option

