



Project Manager- Katelyn Pruett

Job Captain- Hope Roskelly

Communication Manager- Katie Watson

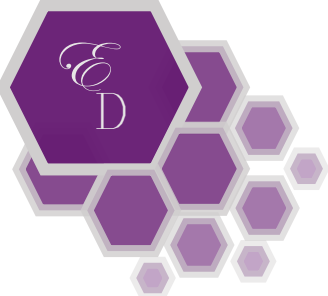


HISTORY/ TRENDS IN DESIGN: HOSPITALITY EDUCATION

- New concepts of classroom design
 - Easily movable furniture
 - Media-rich presentation technology
- Increasing use of flexible space concepts
 - Technology-rich space that is highly flexible to accommodate classes and study groups of varying sizes
 - Flexible spaces that have multiple uses throughout their lifetime (no more single-purpose buildings)
 - Interchangeable wall systems
- More common areas for collaboration
 - Co-locating different disciplines within the same building
- Sustainable energy facilities
 - Some universities are now building for a 100-year life span, which makes sustainability essential
- Lobbies take center stage
 - Mix work, socializing, and relaxation



SITE INFORMATION



South View



East View



North View

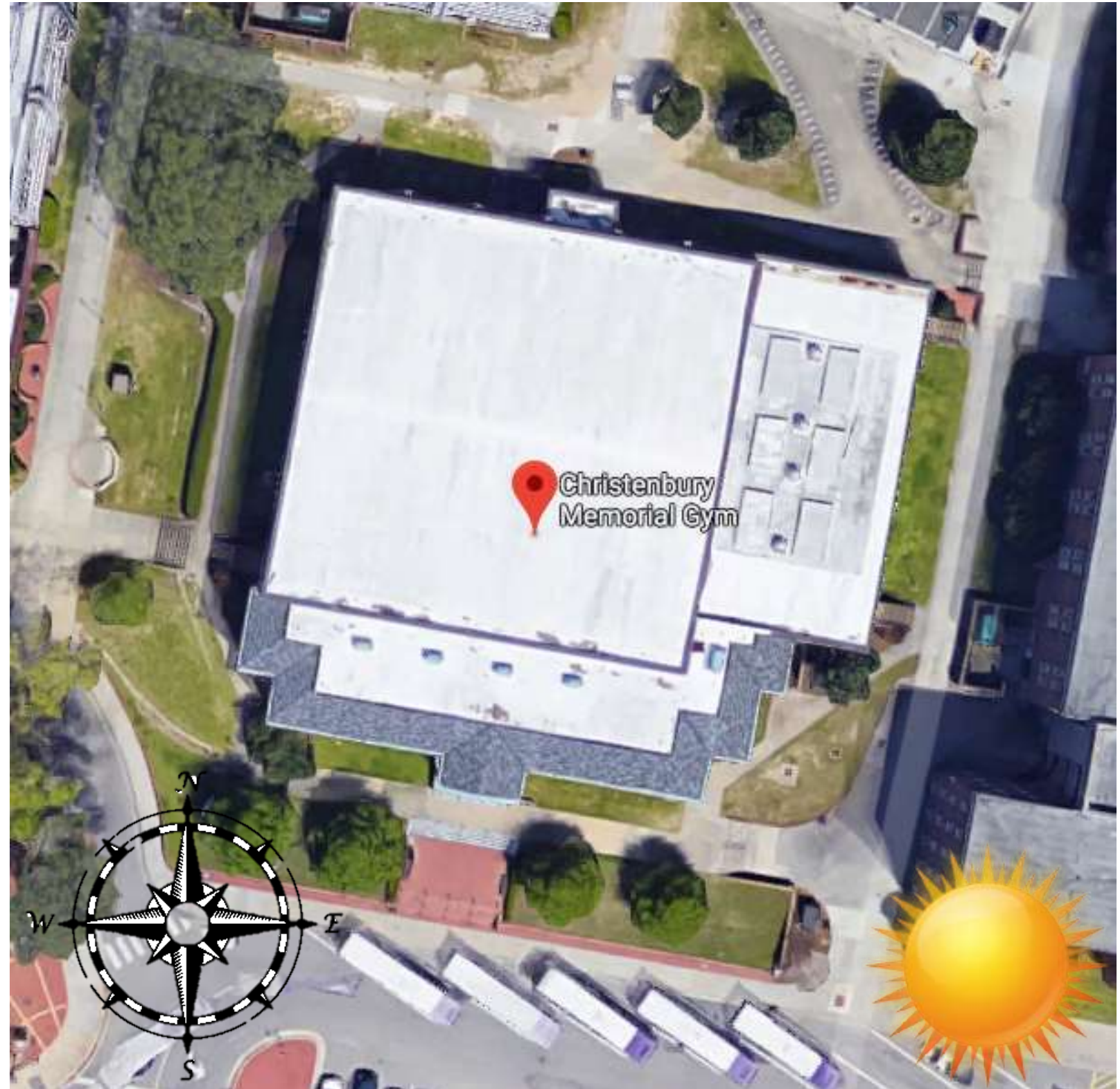


West View

SITE INFORMATION



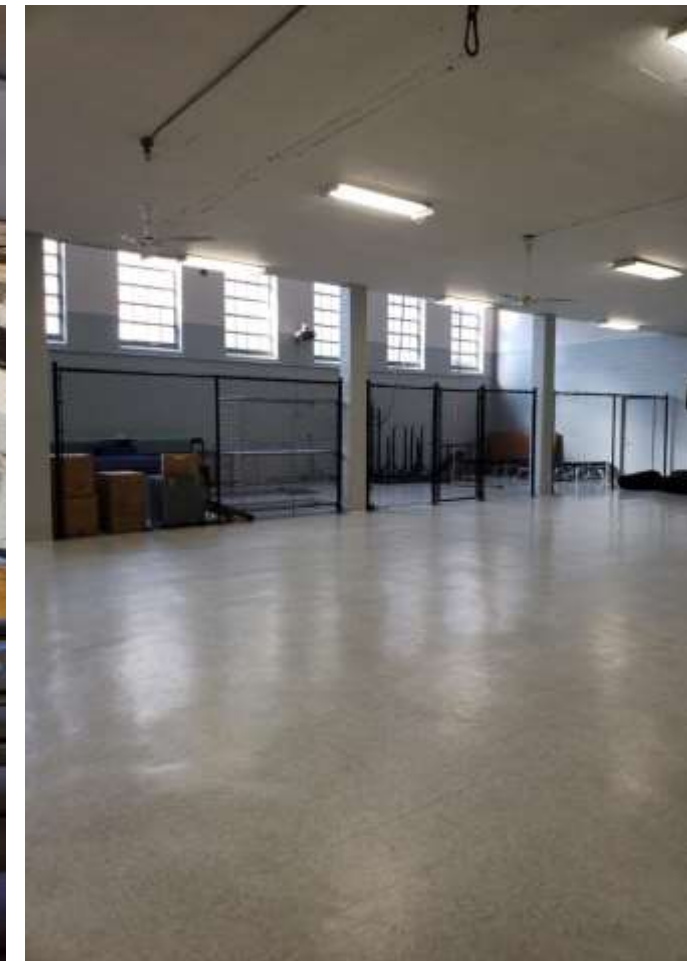
- Christenbury Memorial Gym located on 10th Street
- The sunlight will be the strongest coming from the southeast.
- Majority of the sun will be hitting the pool and gym side.
- 43,000 sq. ft.
- The front façade faces the South side
- Currently in use by ROTC
- Being renovated for an Alumni Center



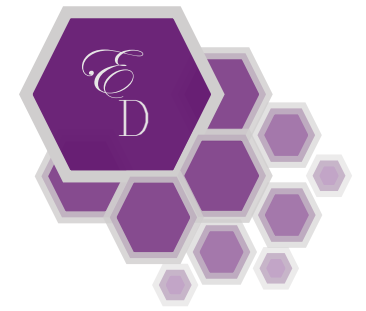
PROGRAM



1st Floor	Square Footage
Storage	4080.05
Mech	1152.27
Office	7770.92
Bathroom	2892.48
Underside of Pool	2929.31
Gymnastics	4994.45
2nd Floor	
Office	3646.04
Bathroom	444.52
Storage	628.11
Stands	2200.33
Gym	12012.23
Pool	5398.56
Total	
Storage	4708.16
Mech	1152.27
Office	11416.96
Bathroom	3337
Pool	8327.87
Stands	2200.33
Gymnastics	4994.45
Gym	12012.32



PROGRAM



New Space	Square Footage	Occupancy Load		Means of Egress
Multi-purpose/Ballroom	12,019	1,717	A-2	4
Museum	7,760	517	A-3	3
Stage	5,460	364	A-1	2
Office	2,937	29	B	1
Pool	3,420	0		1
Event Space	2,805	400	A-3	2
Viewing Area	2,478	64	A-3	2
Kitchen	2,254			
Conference	1,824	121	A-3	2
Restrooms	1,382	rooms are combined		
Storage	1,032	3	S-1	1
Concierge	1,032	68	A-3	2
Café	1,302	86	B	2
Mechanical	900	2	S-2	1
Lobby	380	25	A-3	1
Elevator	420	60		2



INSPIRATION

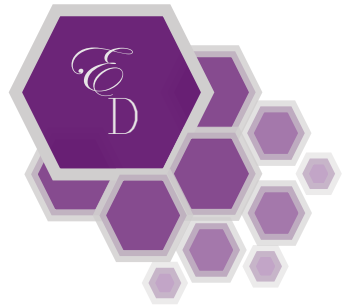




CONCEPT STATEMENT

- Building off the past to promote the future
- Honoring those who have attended East Carolina University
- Keeping the history of ECU alive
- Creating a place for remembrance and unity for graduates





BUBBLE DIAGRAM

Square Footage

Multi/ Ballroom- 12,019

Museum- 7,670

Stage- 5,460

Pool- 3,420

Office- 2,937

Event- 2,805

Viewing Area- 2,478

Kitchen- 2,254

Conference- 1,824

Restroom- 1,382

Storage- 1,032

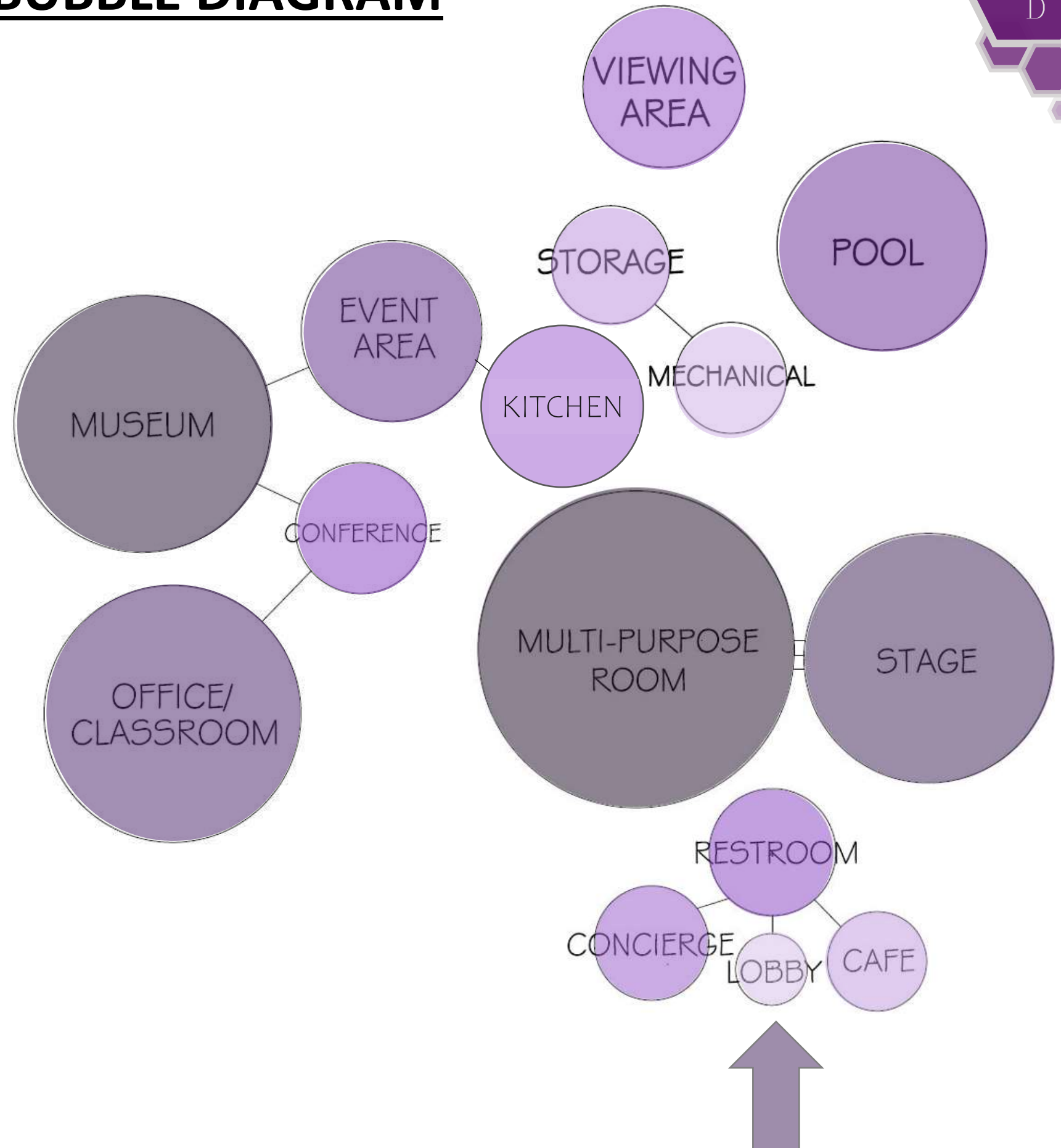
Concierge- 1,032

Café- 1,032

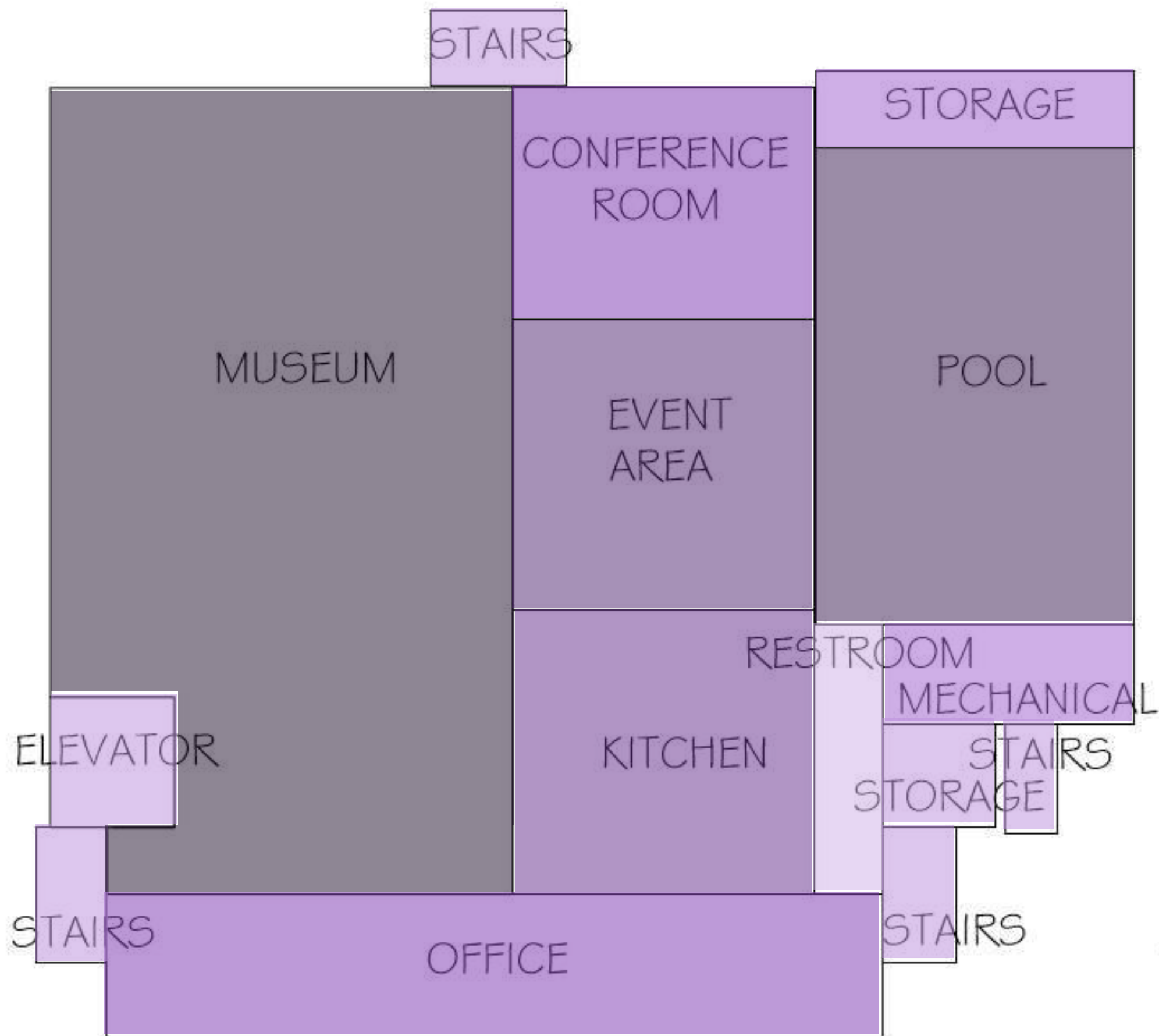
Mechanical- 624

Elevator- 420

Lobby- 380



BLOCK DIAGRAM- 1ST FLOOR



BLOCK DIAGRAM- 2ND FLOOR

