

Christenbury Gymnasium



Mackenzie Alala, Mandy Vignali, and Brenden Fout

Portfolio 2

IDSN 4202

Spring 2019

TABLE OF CONTENTS

Schematic Plans 1-4.....3-6

Schematic Design Sketches

 Daydreaming, Socializing, and Focus Area Sketches.....7-12

 Entry Perspective Sketches.....13-14

 Lounge Perspective Sketches.....15

 Open Work Area Perspective Sketches.....16

Team Member’s Schematic Sketches.....17-22

Architectural Finishes and Furniture.....23-28

Light Fixture Types.....29

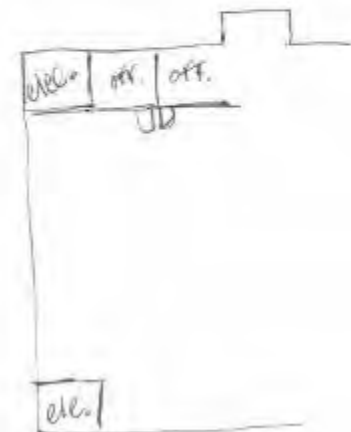
SCHEMATIC PLAN 1

CORRIDORS ARE 5'-6' WIDE

first floor

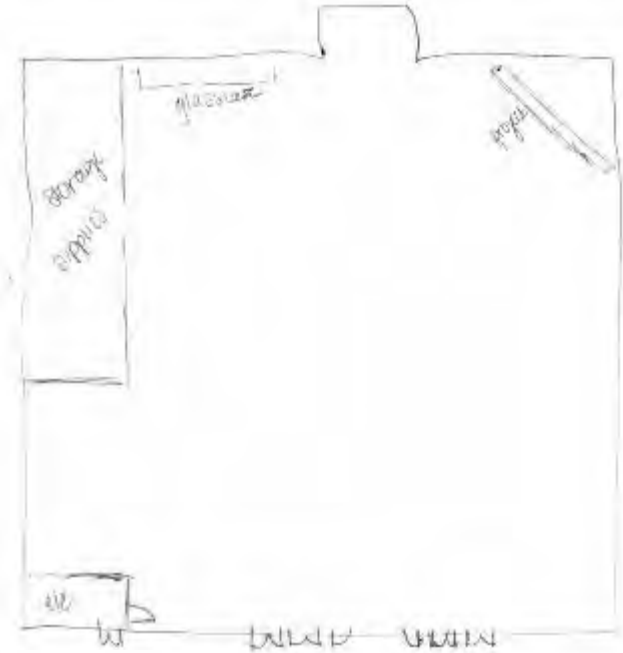
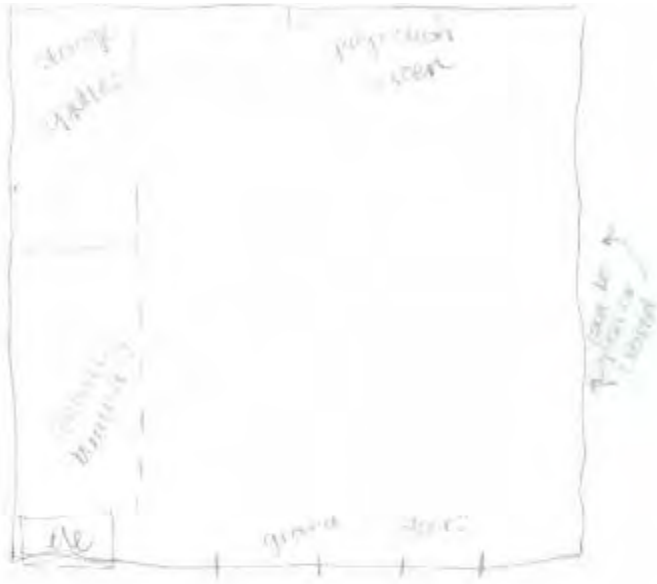


↑
lounge
↓



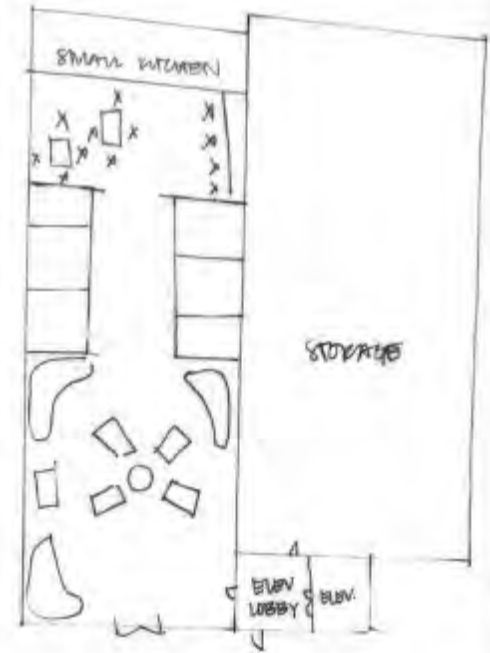
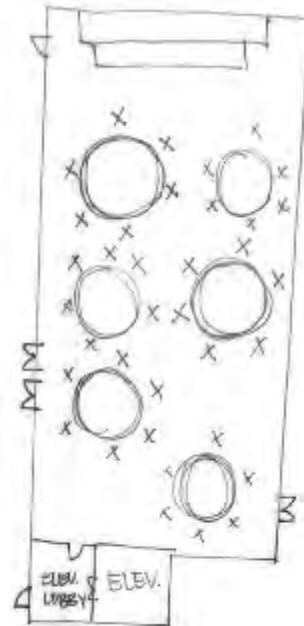
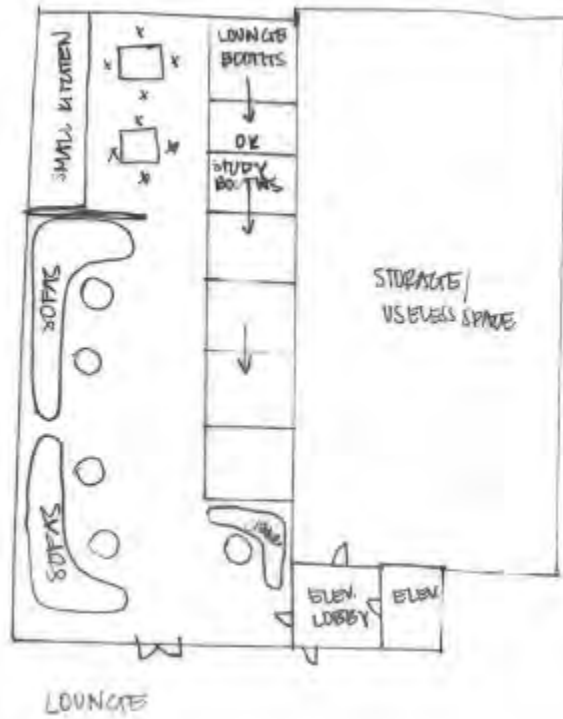
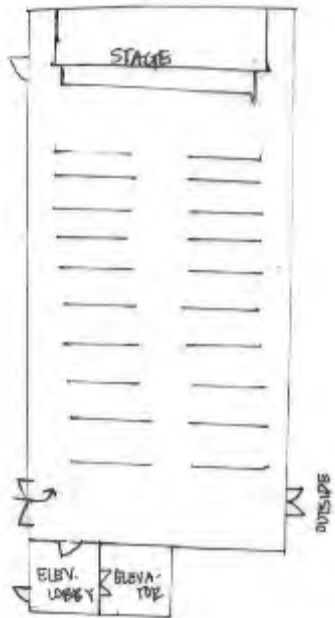
SCHEMATIC PLAN 2

CORRIDORS ARE 5'-6' WIDE



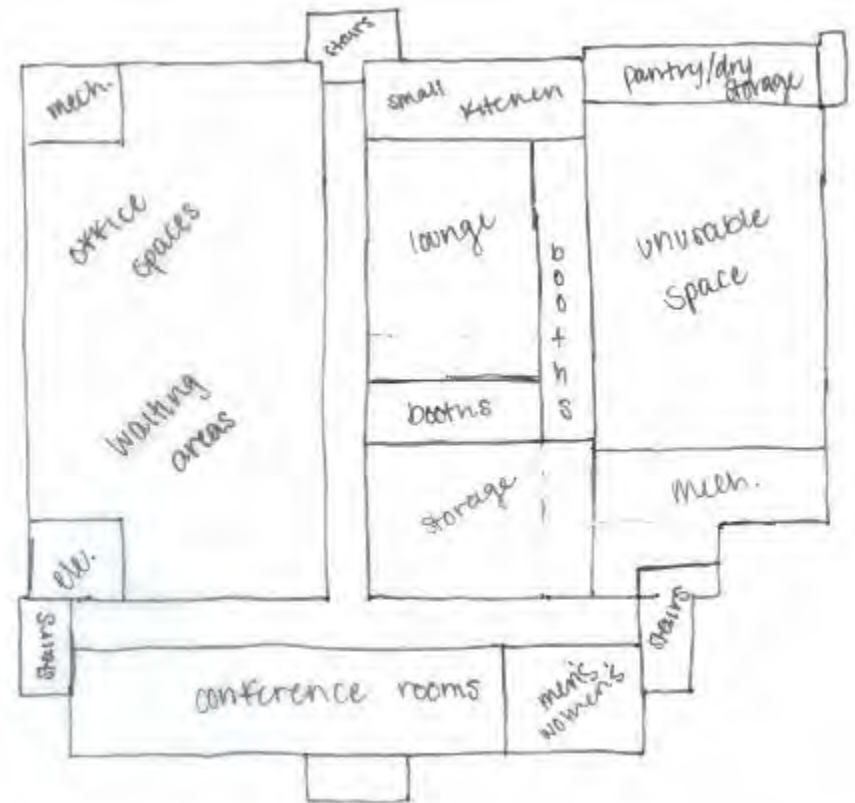
SCHEMATIC PLAN 3

CORRIDORS ARE 5'-6' WIDE



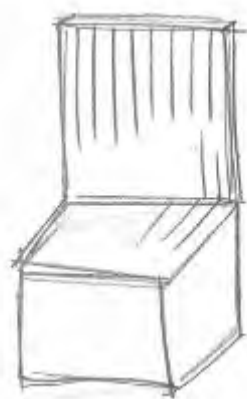
SCHEMATIC PLAN 4

CORRIDORS ARE 5'-6' WIDE



SCHEMATIC DESIGN SKETCHES

DAYDREAMING



Upholstered Seating
in the Lounge Booths

SCHEMATIC DESIGN SKETCHES

SOCIALIZING

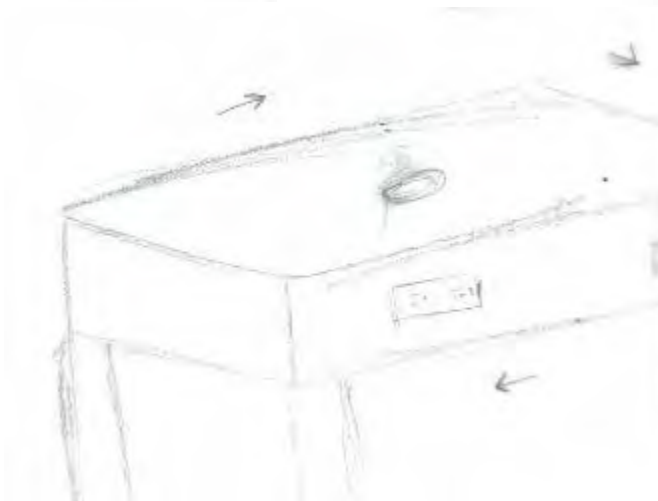
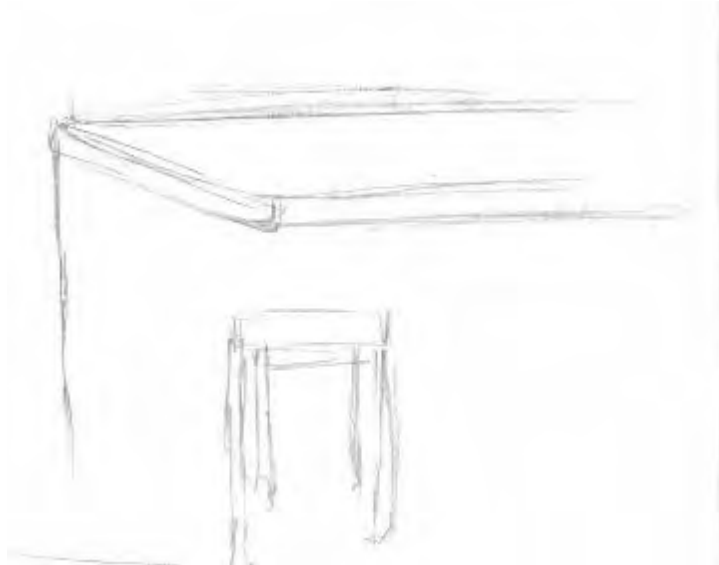


ROLLING OTTOMAN/
COFFEE TABLE

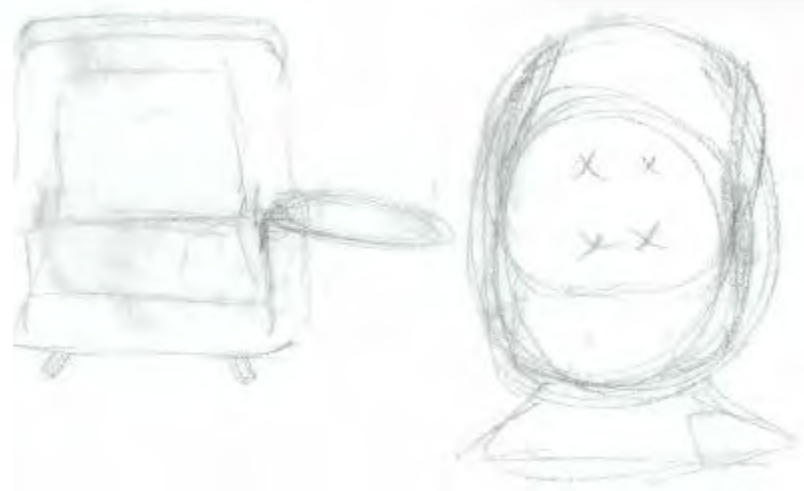


SCHEMATIC DESIGN SKETCHES

SOCIALIZING

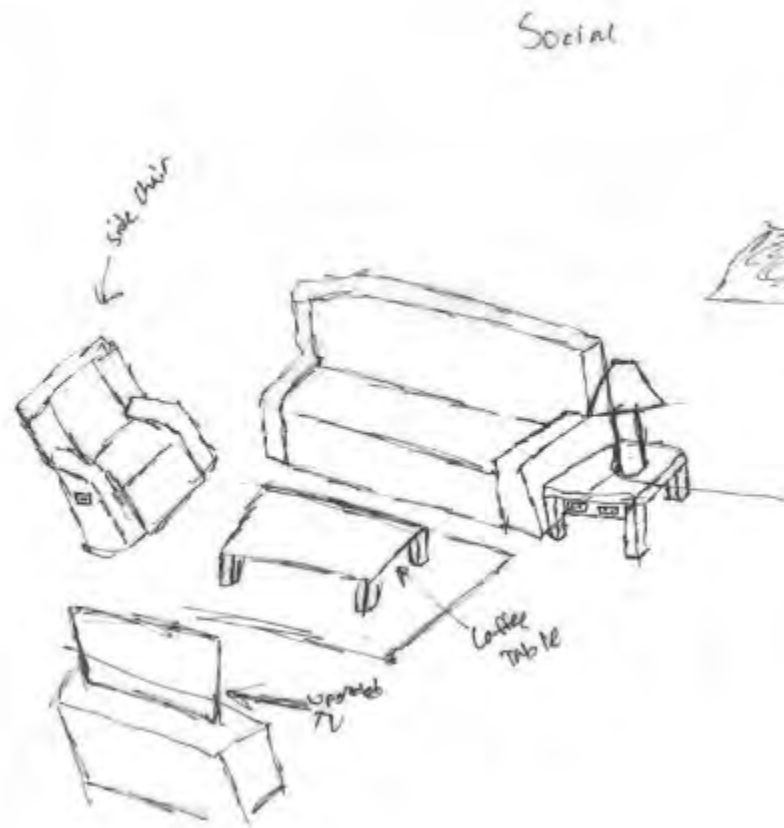


SCHEMATIC DESIGN SKETCHES
FOCUS WORK



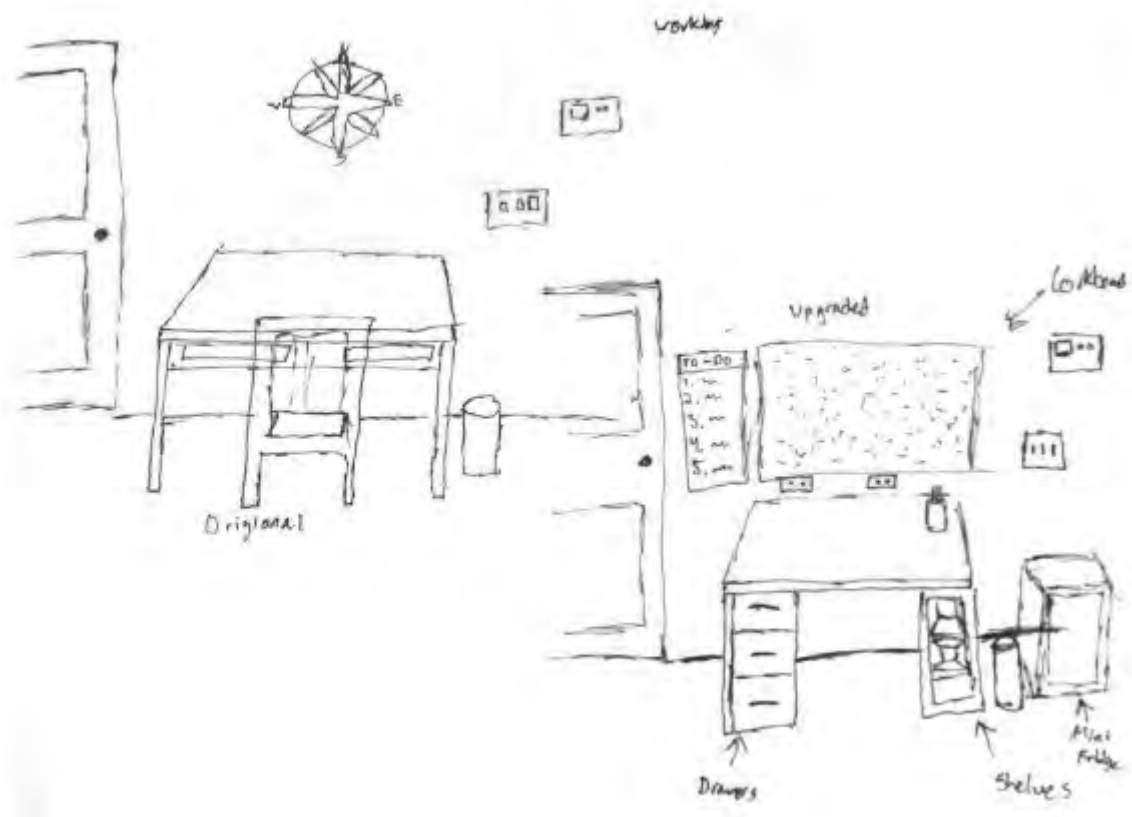
SCHEMATIC DESIGN SKETCHES

SOCIALIZING



SCHEMATIC DESIGN SKETCHES

FOCUS AREA



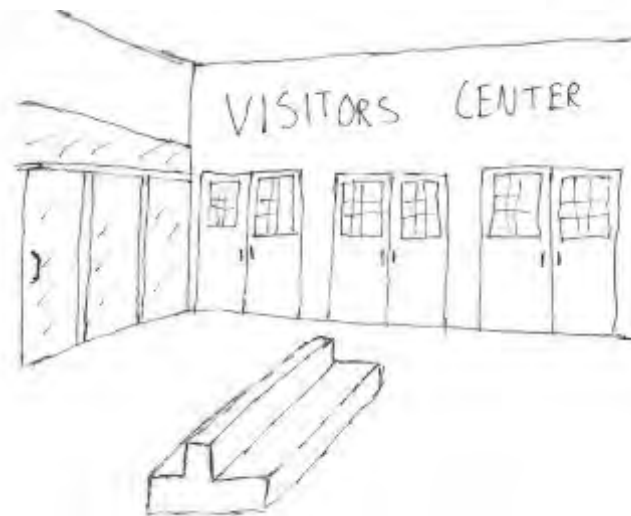
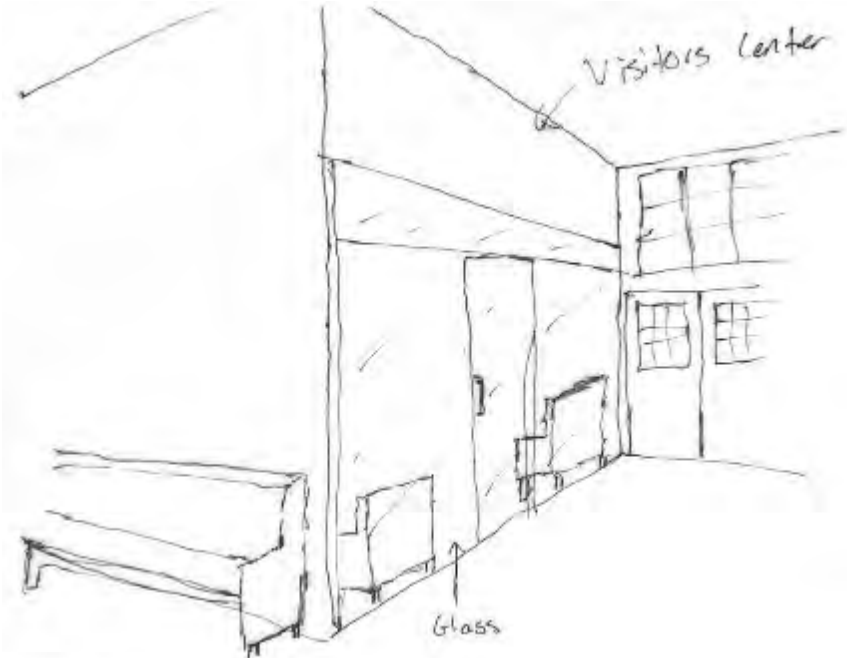
SCHEMATIC DESIGN SKETCHES

ENTRY PERSPECTIVES



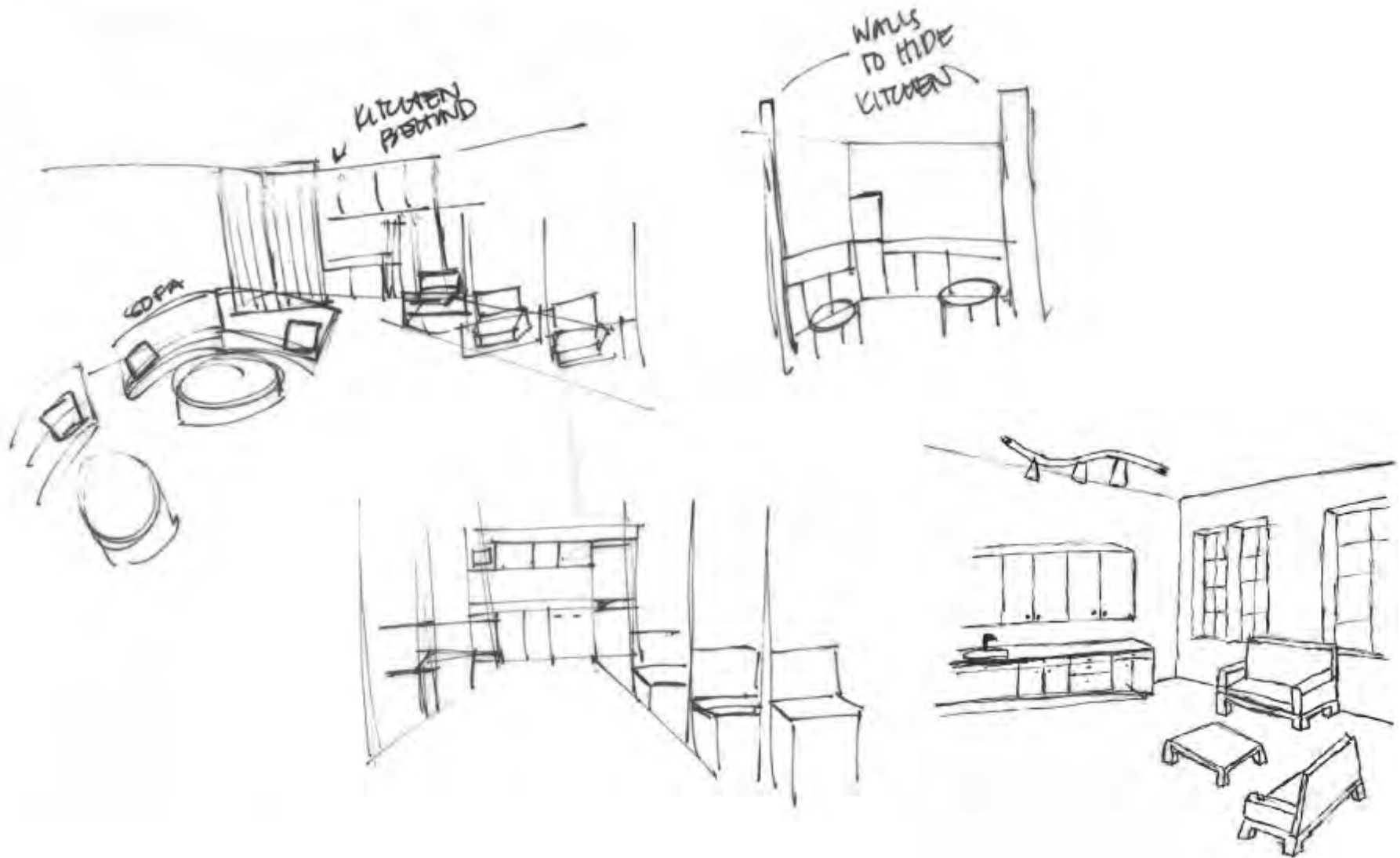
SCHEMATIC DESIGN SKETCHES

ENTRY PERSPECTIVES



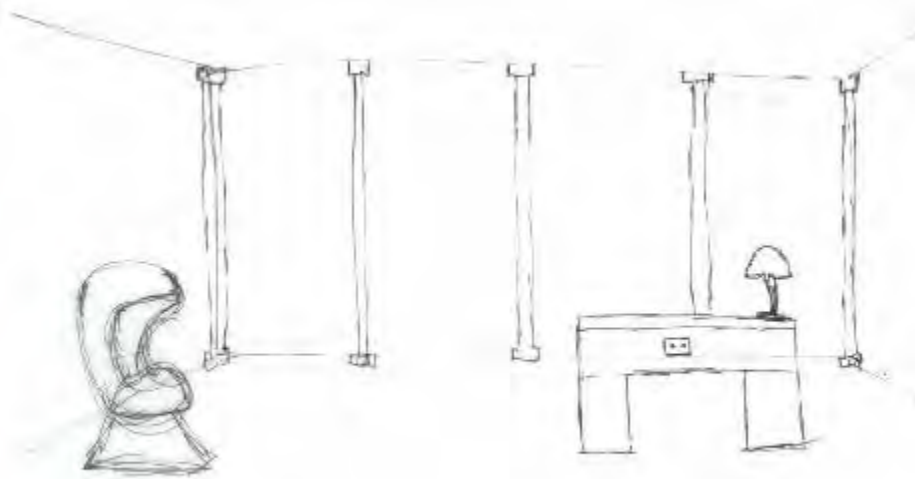
SCHEMATIC DESIGN SKETCHES

LOUNGE PERSPECTIVE (AT LEAST 3)



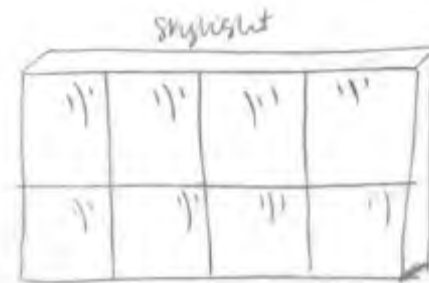
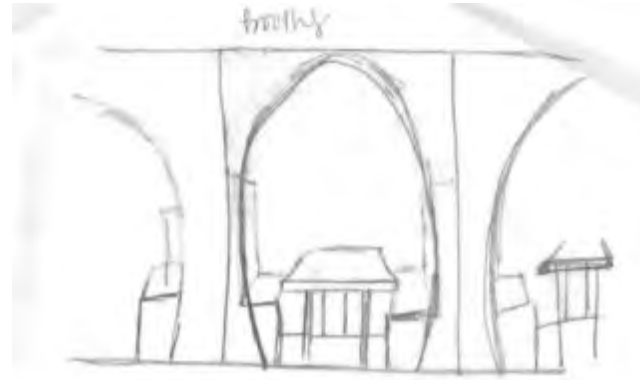
SCHEMATIC DESIGN SKETCHES

OPEN WORK AREA



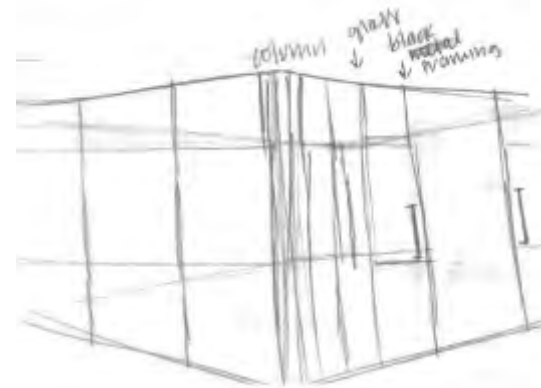
SCHEMATIC SKETCHES

MACKENZIE (1 2)



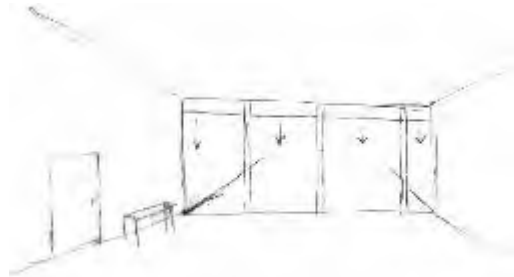
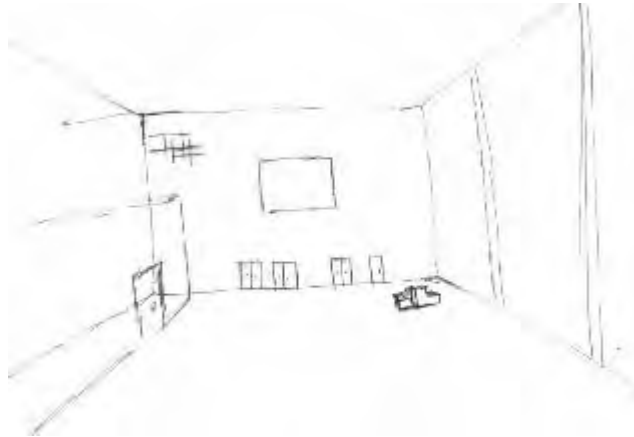
SCHEMATIC SKETCHES

MACKENZIE (1 2)



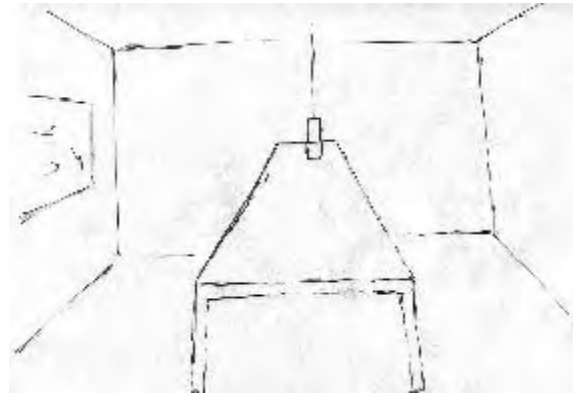
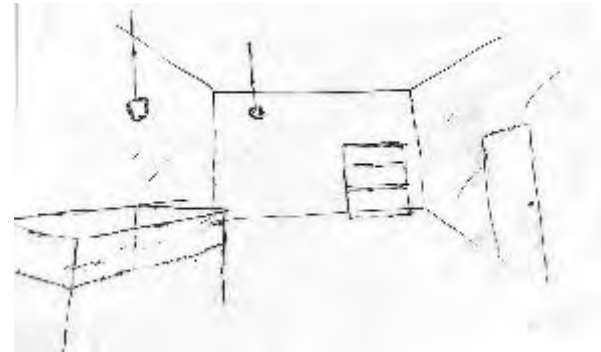
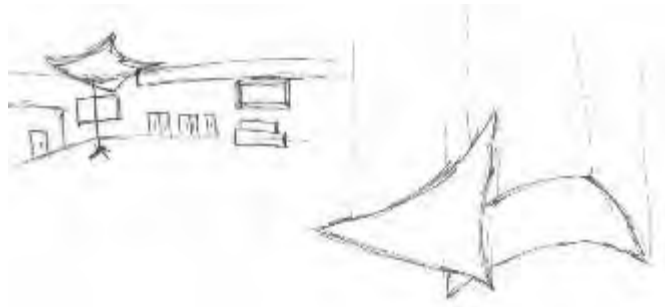
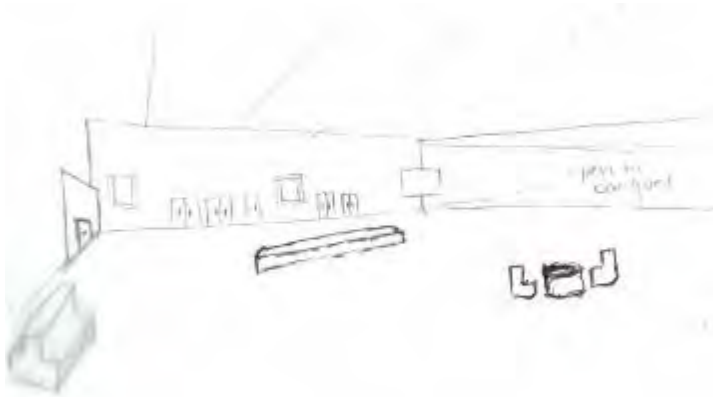
SCHEMATIC SKETCHES

MANDY (1 2)



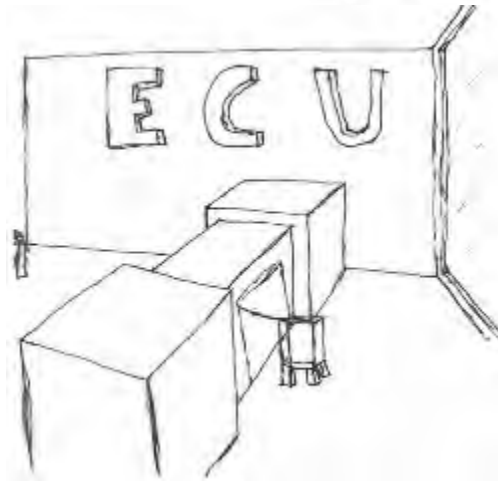
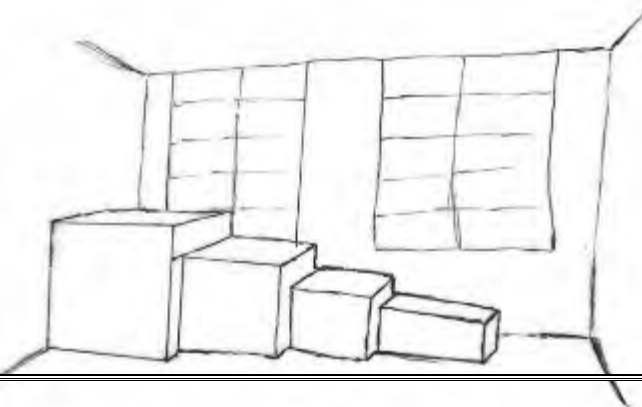
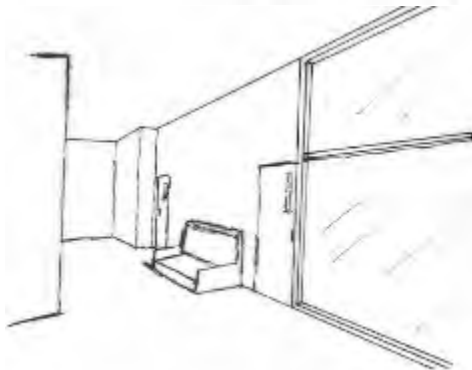
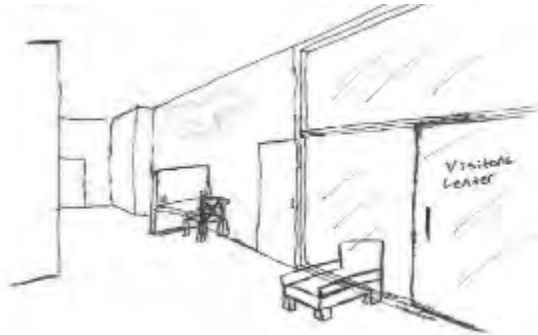
SCHEMATIC SKETCHES

MANDY (1 2)



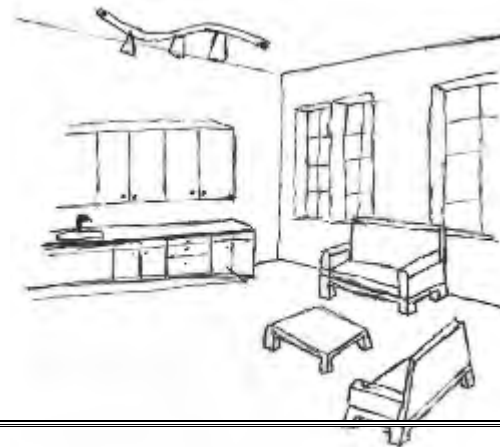
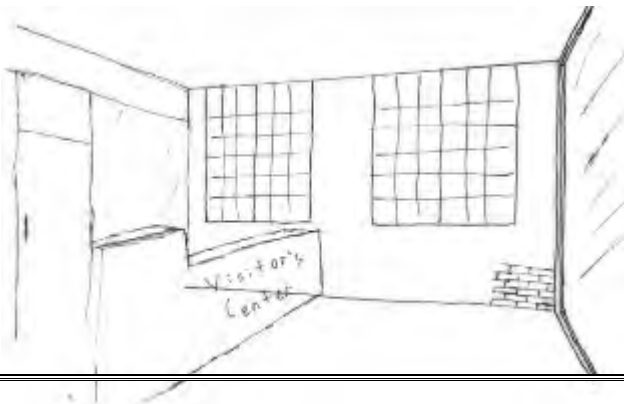
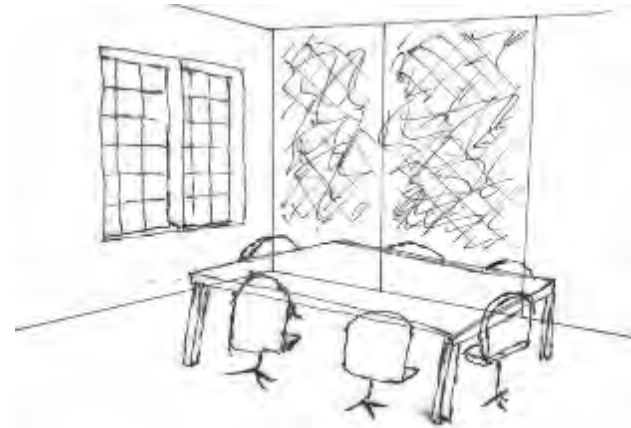
SCHEMATIC SKETCHES

BRENDEN (12)



SCHEMATIC SKETCHES

BRENDEN (12)



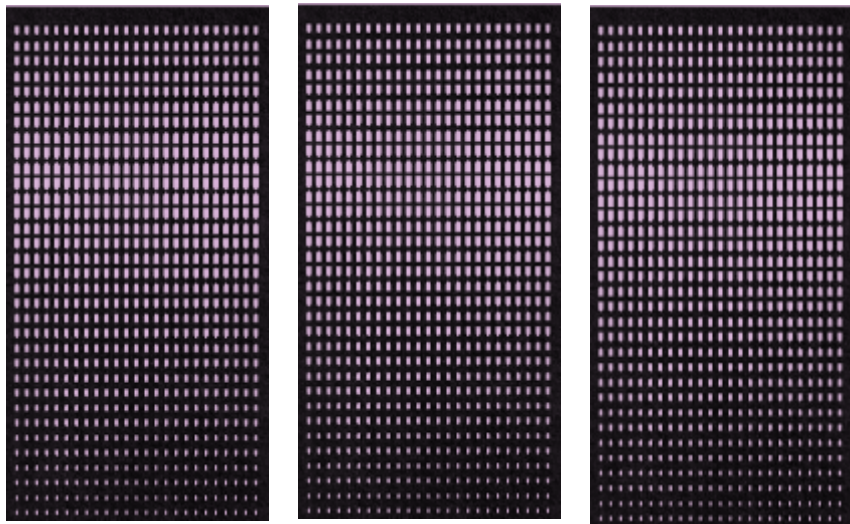
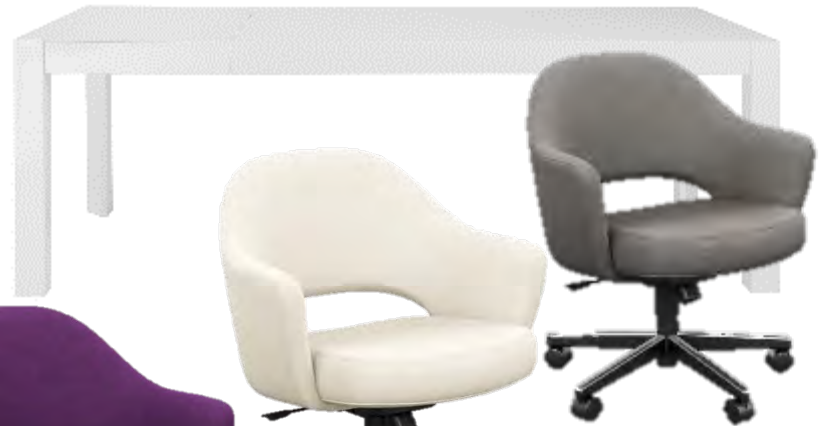
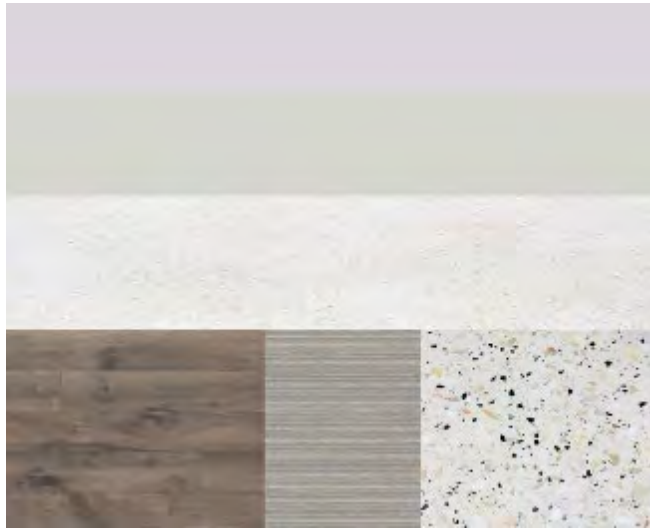
ARCHITECTURAL FINISHES



CLEAN AND MODERN FINISHES ALLOW FOR A
MODERN FEEL THROUGHOUT THE HISTORIC
DEPTH OF THE BUILDING

ARCHITECTURAL FINISHES AND FURNITURE

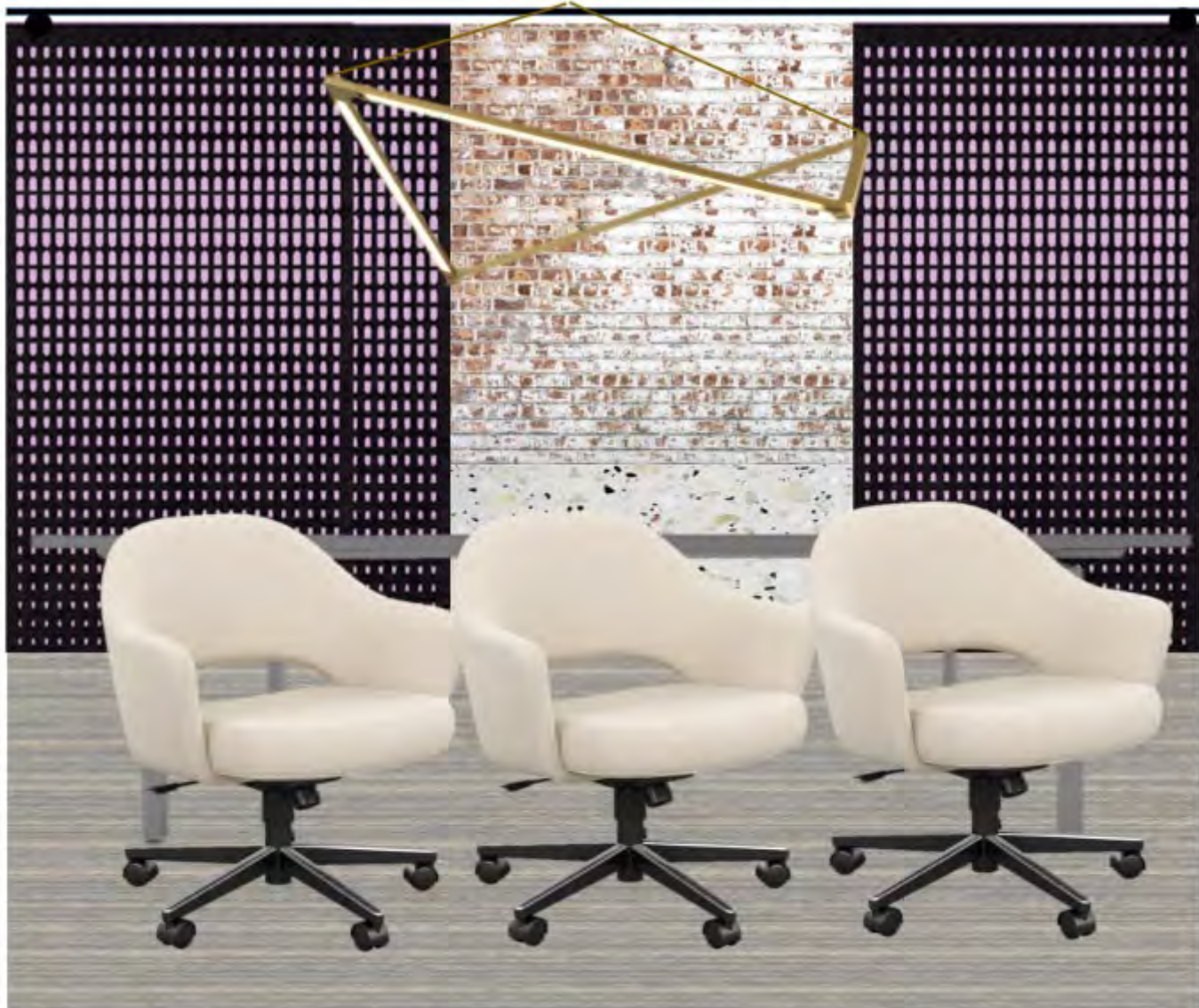
MEETING AND CONFERENCE ROOMS



Filz Felt Acoustical Dividers

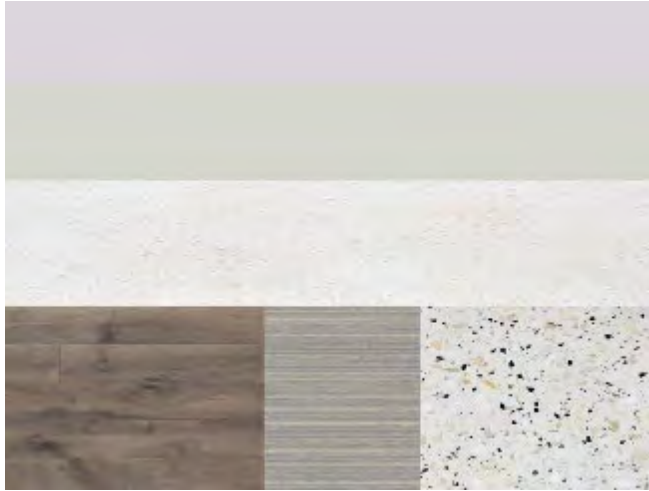


ARCHITECTURAL FINISHES AND FURNITURE
MEETING AND CONFERENCE ROOMS



ARCHITECTURAL FINISHES AND FURNITURE

VISITORS CENTER AND ALUMNI EVENT SPACE

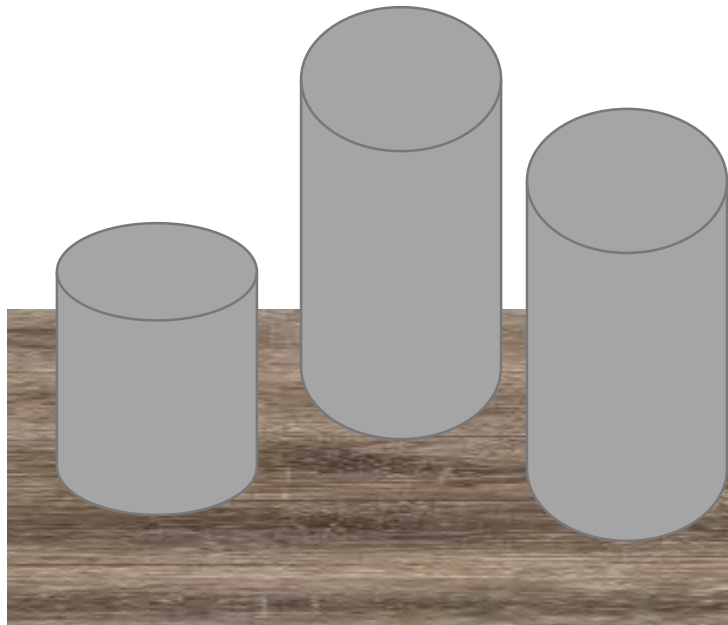
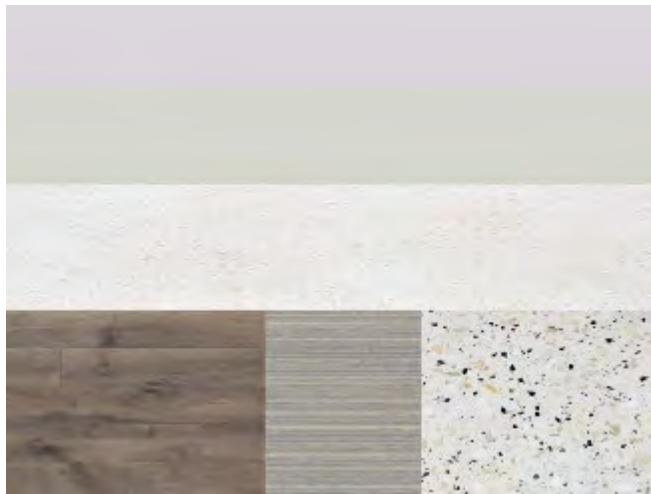


**POPS OF PURPLES AND YELLOWS
THROUGHOUT THE SPACE CREATE A MORE
UPLIFTING AREA AND RELATE BACK TO THE
FEEL OF ALUMNI/VISITORS/GUESTS OF ECU.**



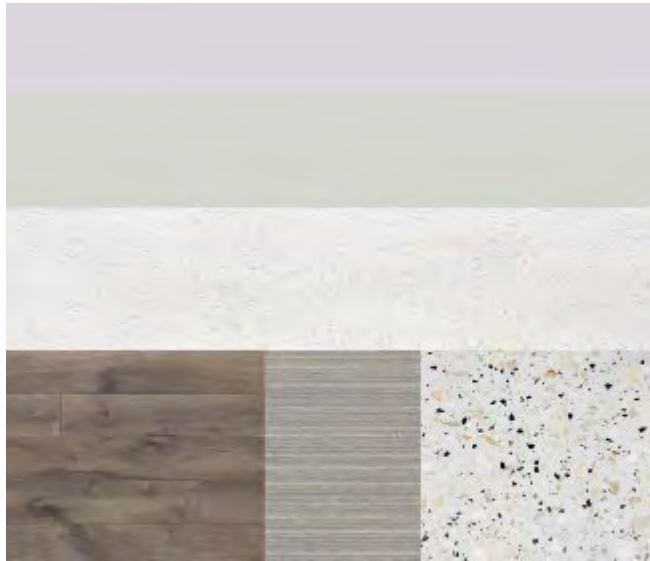
ARCHITECTURAL FINISHES AND FURNITURE

EXHIBITION SPACE



ARCHITECTURAL FINISHES AND FURNITURE

LOUNGE



LIGHT FIXTURES



EXPOSED PIPE FIXTURES WILL BE USED AS SCENIC LIGHTING TO ENHANCE THE WALK THROUGHOUT THE BUILDING. OVERHEAD BRIGHT LIGHTING IN THE LARGER AREAS EMPHASIZING ITS SPACE.



FUN AND INTERESTING LIGHTING THAT WILL ADD THE MODERN FEEL TO THE HISTORIC SPACE.



RECESSED CANS TO ALLOW FOR EXTRA LIGHTING THROUGHOUT THE ENTIRE SPACE



LARGE HANGING PENDANTS WITH IN THE EVENT SPACE AND EXHIBITION TO ALLOW FOR DEPTH ALONGSIDE THE CANOPIES