



31N ONE

DESIGN TEAM

**ALUMNI
CENTER**

Jennifer Guzman, Amanda Hill, Amy Stasuk

Preliminary Budget

	Square Footage	Construction Fee	Furniture Fee	Steel Fee
Lower Level	24,071	7,221,300	1,203,550	n/a
Upper Level	25,902	7,770,600	1,295,100	n/a
Mezzanine	1,133	339,900	56,650	n/a
Pool	n/a	n/a	n/a	3,800,000
Subtotal	51,106	15,331,800	2,555,300	3,800,000
Total				21,738,206



Challenge Resolution Statement

Challenges:

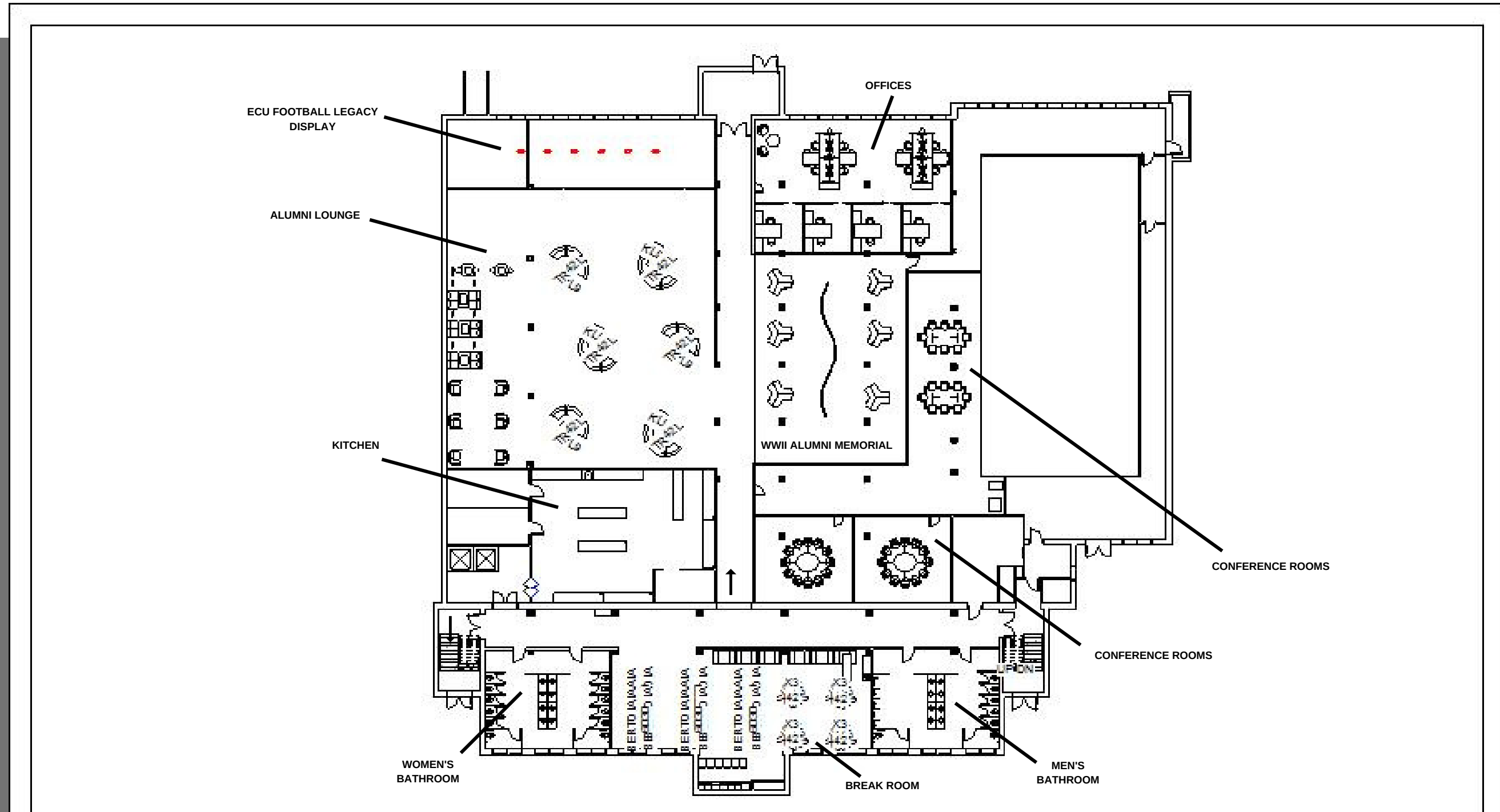
- Multiple Heights/Level
- Breaking up large spaces
- Daylighting

Solutions

In the Alumni Center, the multiple level heights were addressed by filling up the levels that were lower than the rest of the spaces. Large spaces were broken up and used for different purposes that will be beneficial to the Alumni center. Additionally, for those spaces not near windows, plenty of lighting fixtures were installed to create ample light.

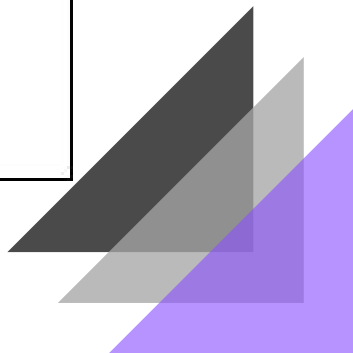


Furniture Plan - Lower Level

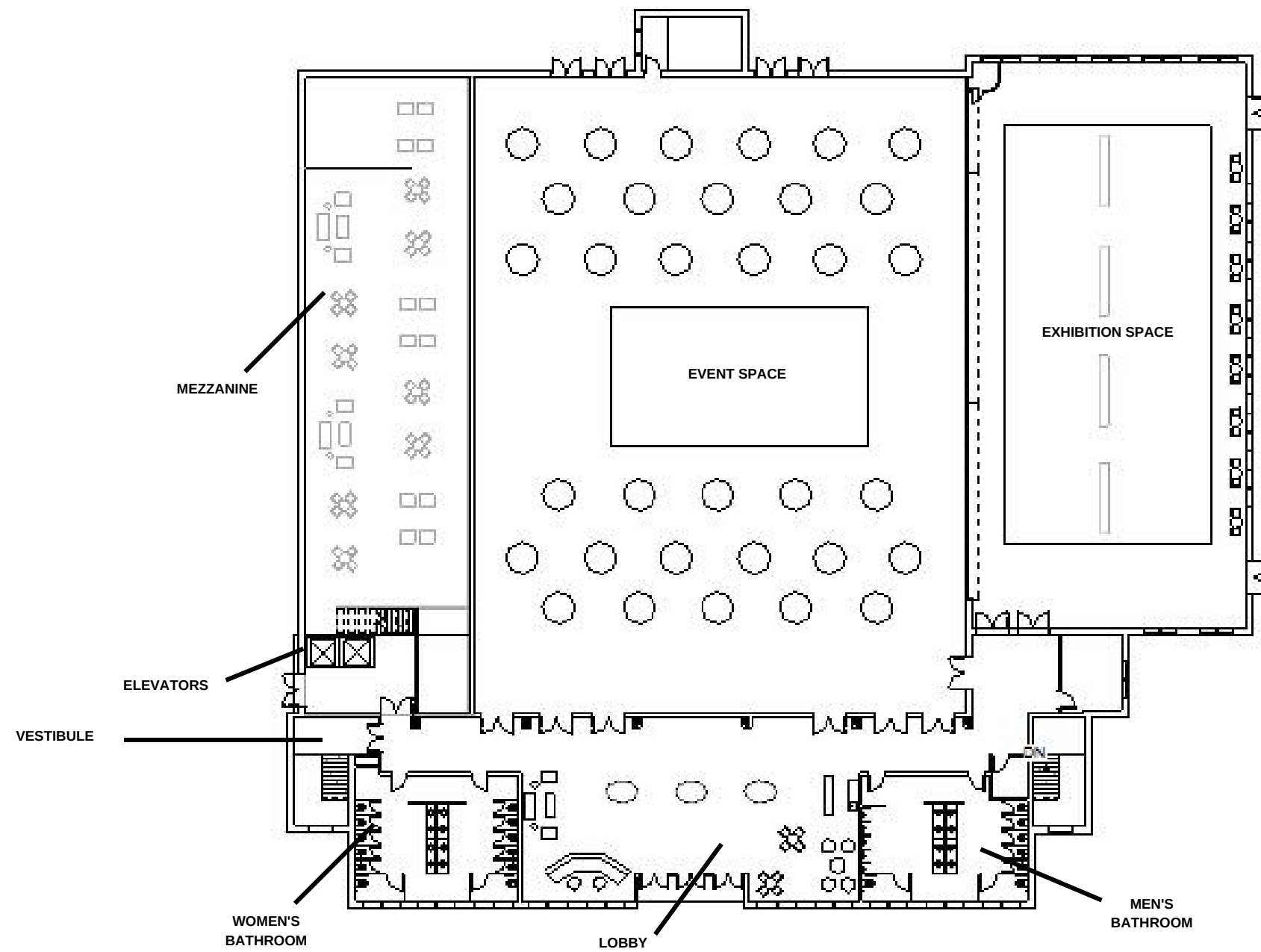


Scale: 3/64" = 1'-0"

31None



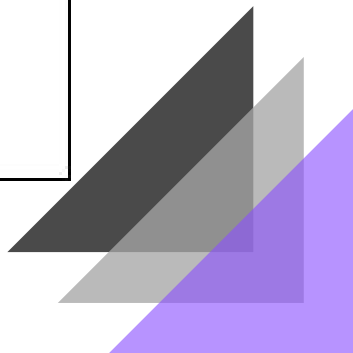
Furniture Plan - Upper Level



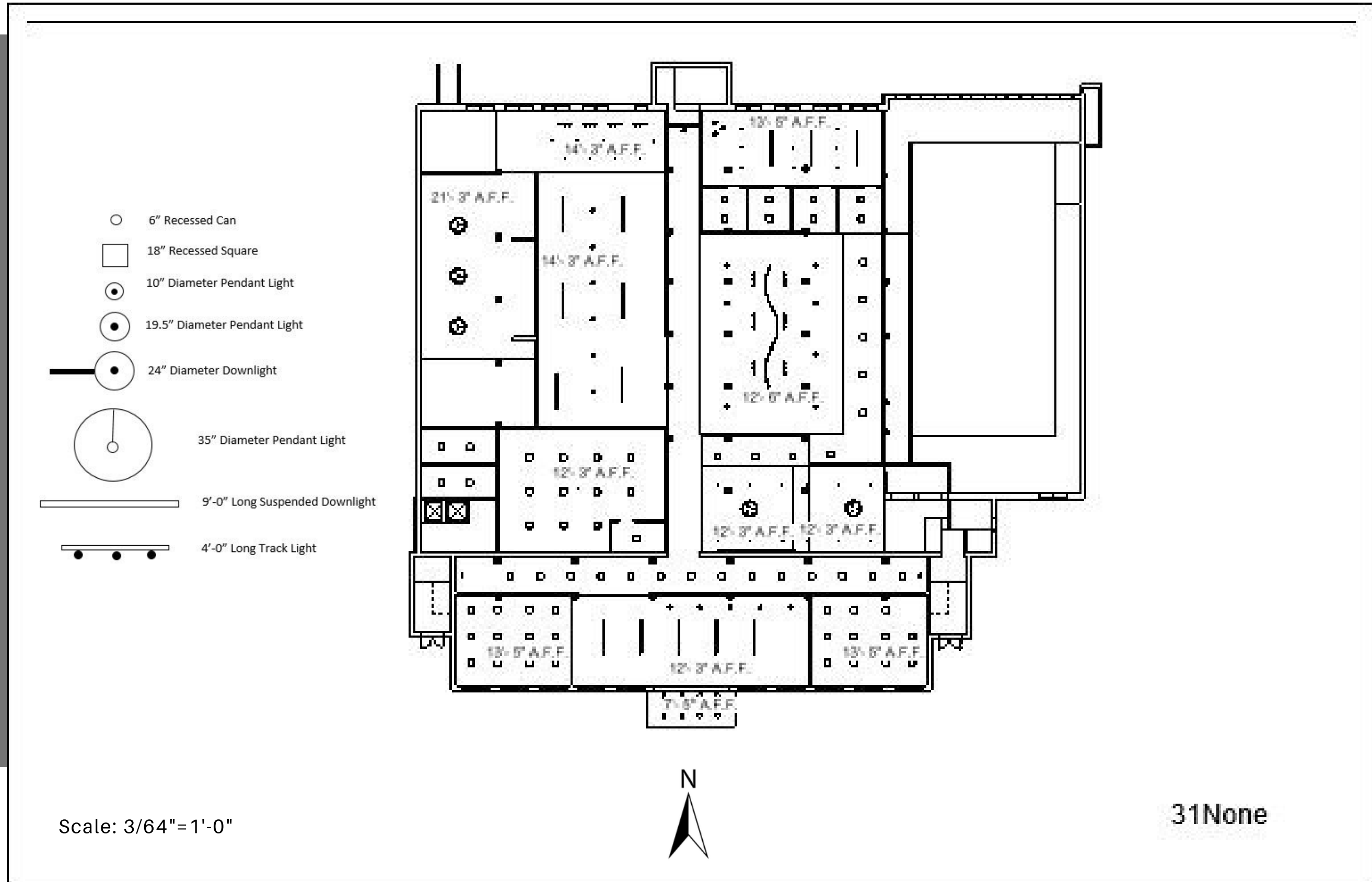
Scale: 3/64"=1'-0"



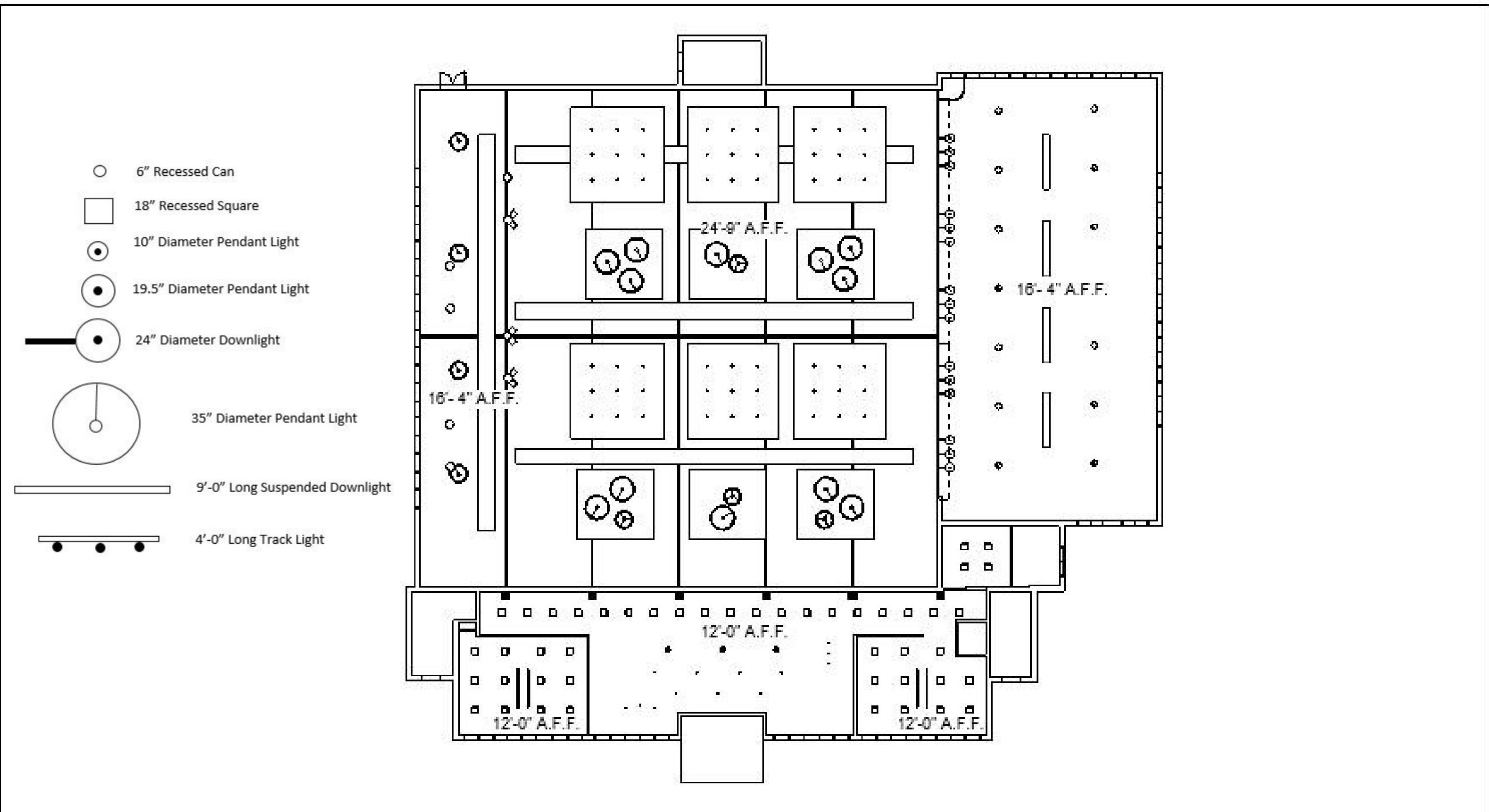
31None



Reflected Ceiling Plan - Lower Level



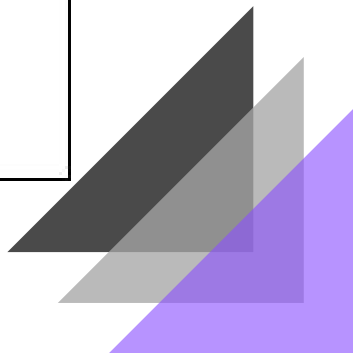
Reflected Ceiling Plan - Upper Level



Scale: 3/64" = 1'-0"



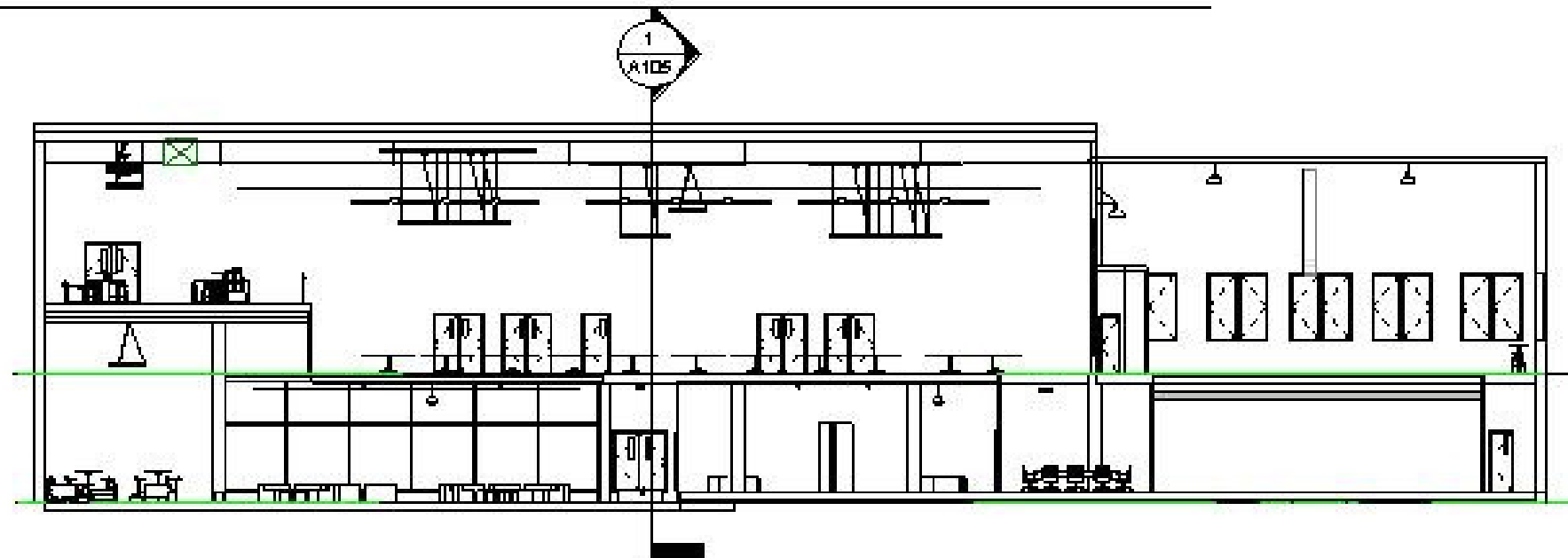
31None



Building Sections

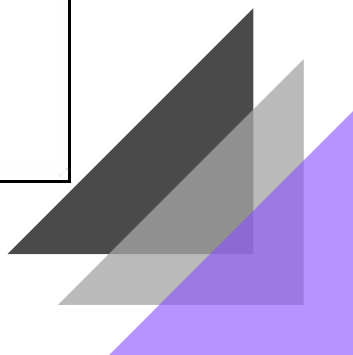


① N-S Section
1/16" = 1'-0"



② E-W Section
1/16" = 1'-0"

31None



Renderings

OFFICE SPACE



Renderings

WWII MEMORIAL



Renderings

BREAK ROOM



Renderings

ALUMNI LOUNGE



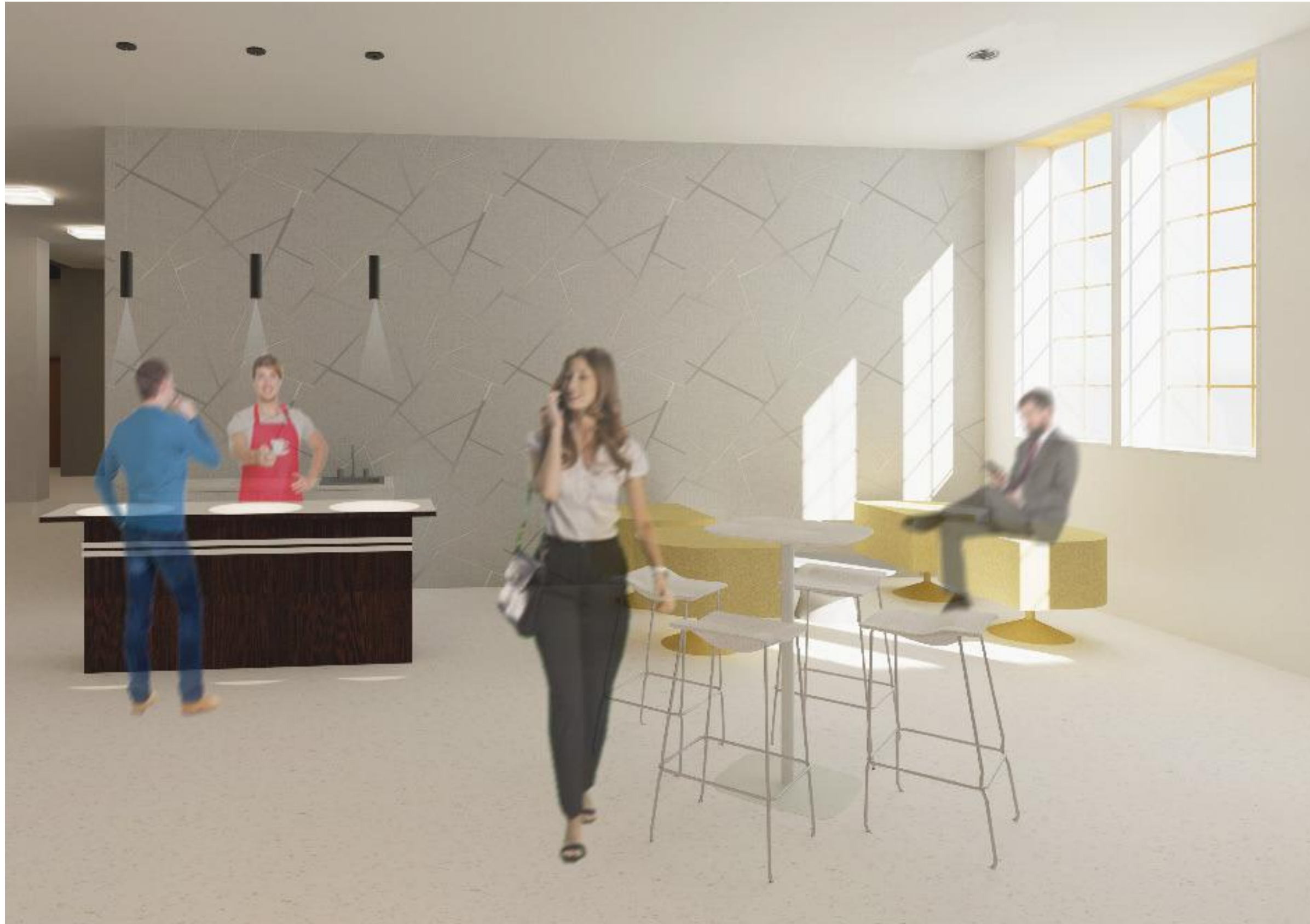
Renderings

LOBBY



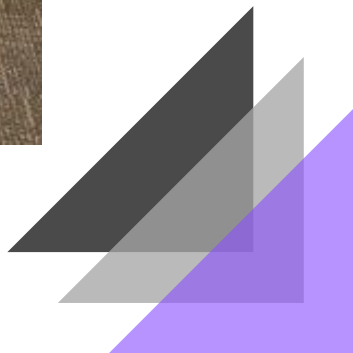
Renderings

LOBBY (COFFEE CAR AND LOUNGE)



Renderings

EVENT SPACE



Renderings

GRANDSTAND OBSERVATORY LOUNGE

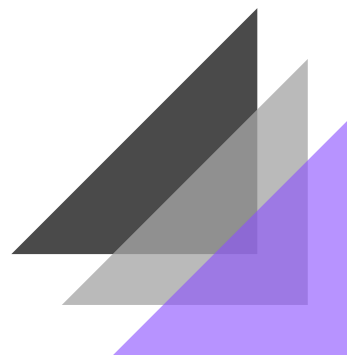
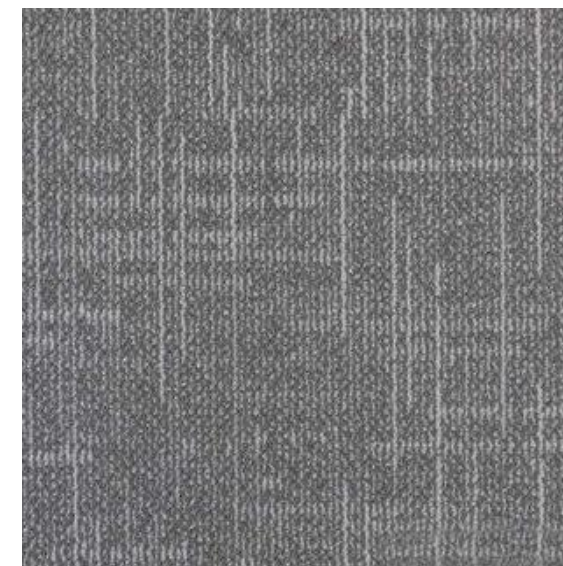
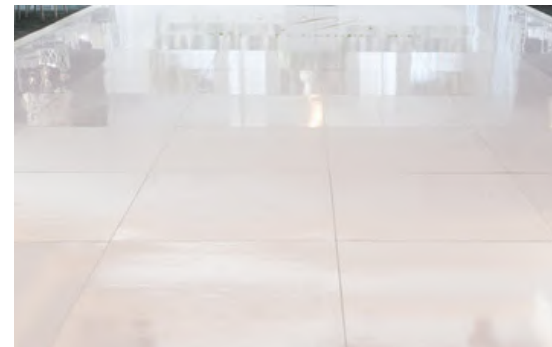


Renderings

EXHIBITION



Finishes, Furniture, Lighting



Finishes, Furniture, Lighting

