



Anna Nichols – Project Manager

Caitlin Mize – Communication Captain

Cameron Giddings – Job Captain

Christenbury Gym Renovation

Spring 2019 - 4202

# PROJECT BUDGET

Top Floor- Main Level	Sq Feet	Construction Cost	Furniture Cost
Training Field	18,427	5,996,100	999,350
Bathrooms	940	282,000	47,000
Offices	1449	434,700	72,450
Mechanical	420	126,000	21,000
Locker Rooms	1560	468,000	78,000
Corridor	1625	487,500	81,250

Bottom Floor	Sq Feet	Construction Cost	Furniture Cost
Briefing Rooms	1359	407,700	67,950
Pool	2926	877,800	146,300
Pool Mechanical	1115	334,500	55,750
Mechanical Room	335	100,500	16,750
Banquet	3185	955,500	159,250
Office	2866	859,800	143,300
Training Room	253	75,900	12,650
Simulation Room	1152	345,600	57,600
Class Room	3252	975,600	162,600
Corridor	2522	756,600	126,100
computer room	736	220,800	36,800
Lounge/Kitchen	2644	793,200	132,200
Bathroom	489	146,700	146,700
supply Room	518	155,400	25,900

Pool Steel	Cost
\$3800 @ 1000 Tons	3,800,000

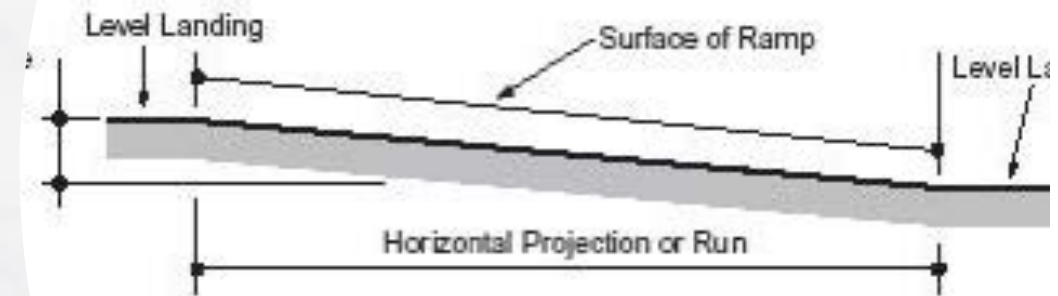
**Total Project Budget**  
21,236,573



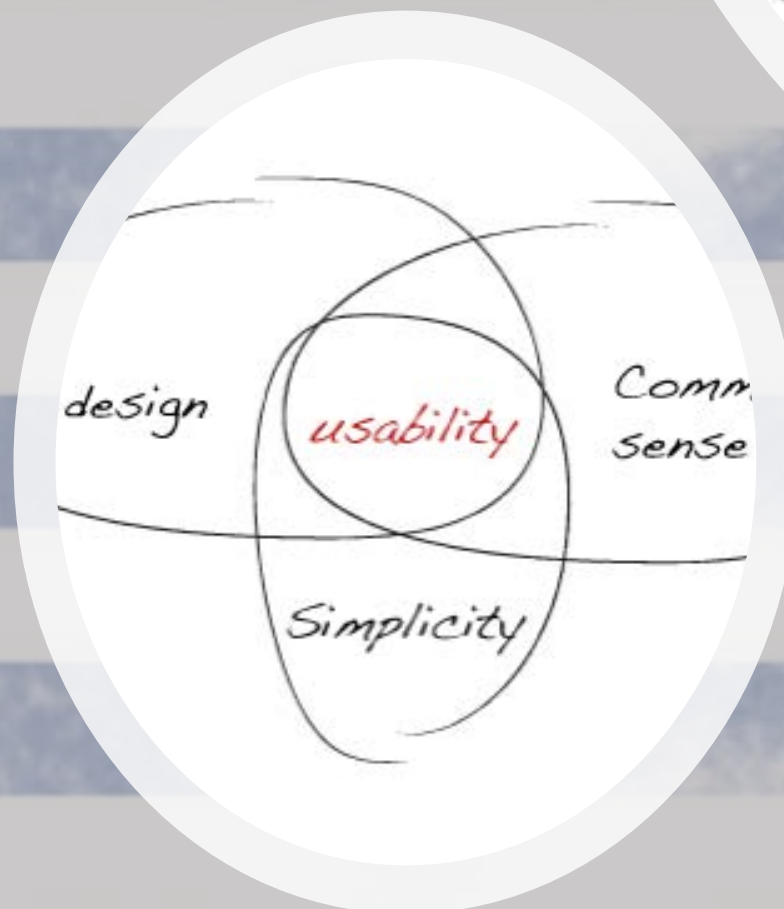
# DESIGN CHALLENGES

- Creating ADA accessibility in the lower level of Christenbury Gym.
- Space Planning to maximize usability/functionality for ROTC.
- Incorporating all of the NEEDS (and some wants) to please both Army & Air Force ROTC.

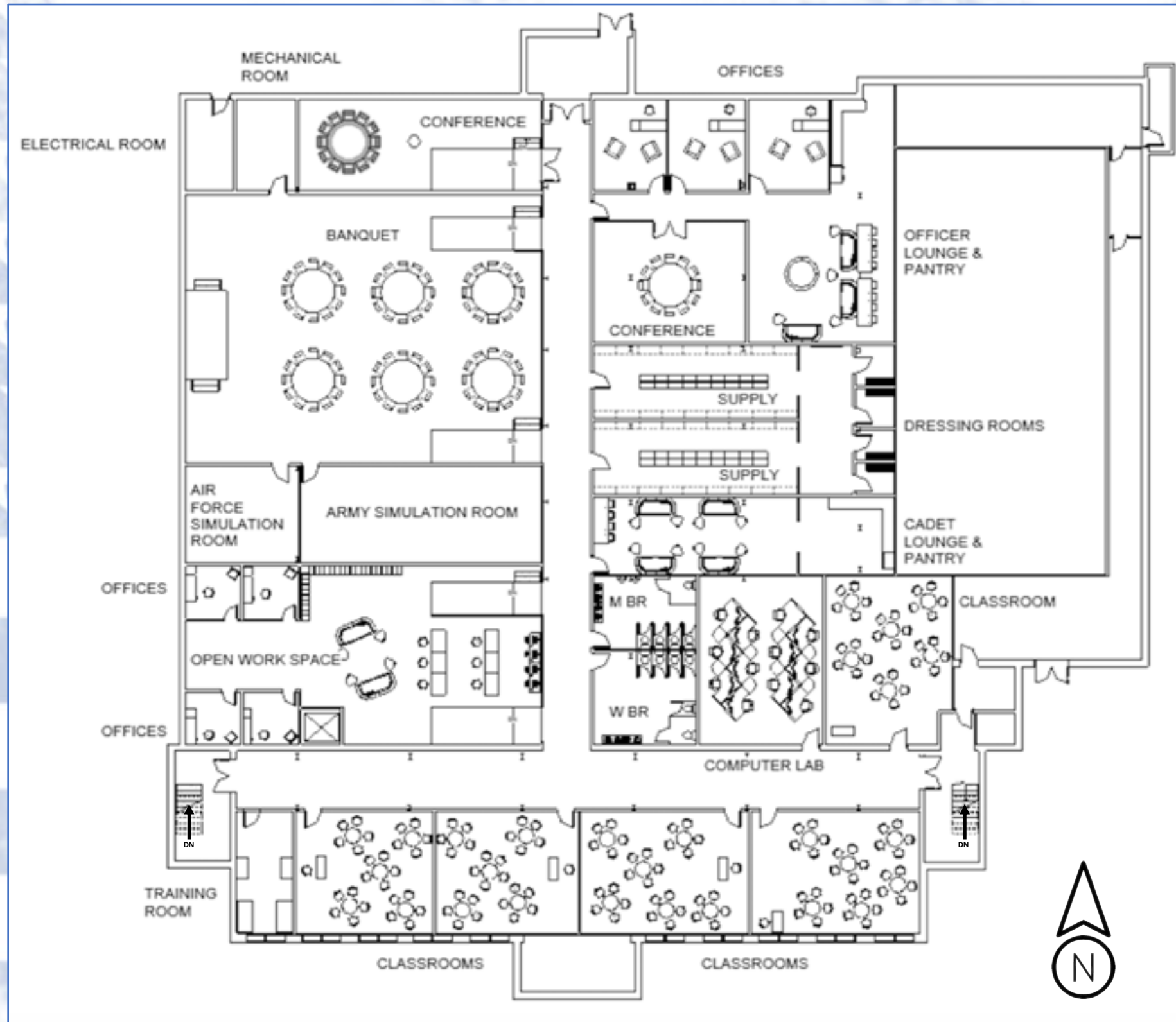
**This project's design will adopt the interests of the Universities ROTC programs, to address the needs which will best impact each battalion and their soldiers.**



Slope	Maximum Rise		Maximum Horizontal Projection	
	in	mm	ft	m
to < 1:16	30	760	30	9
< 1:20	30	760	40	12

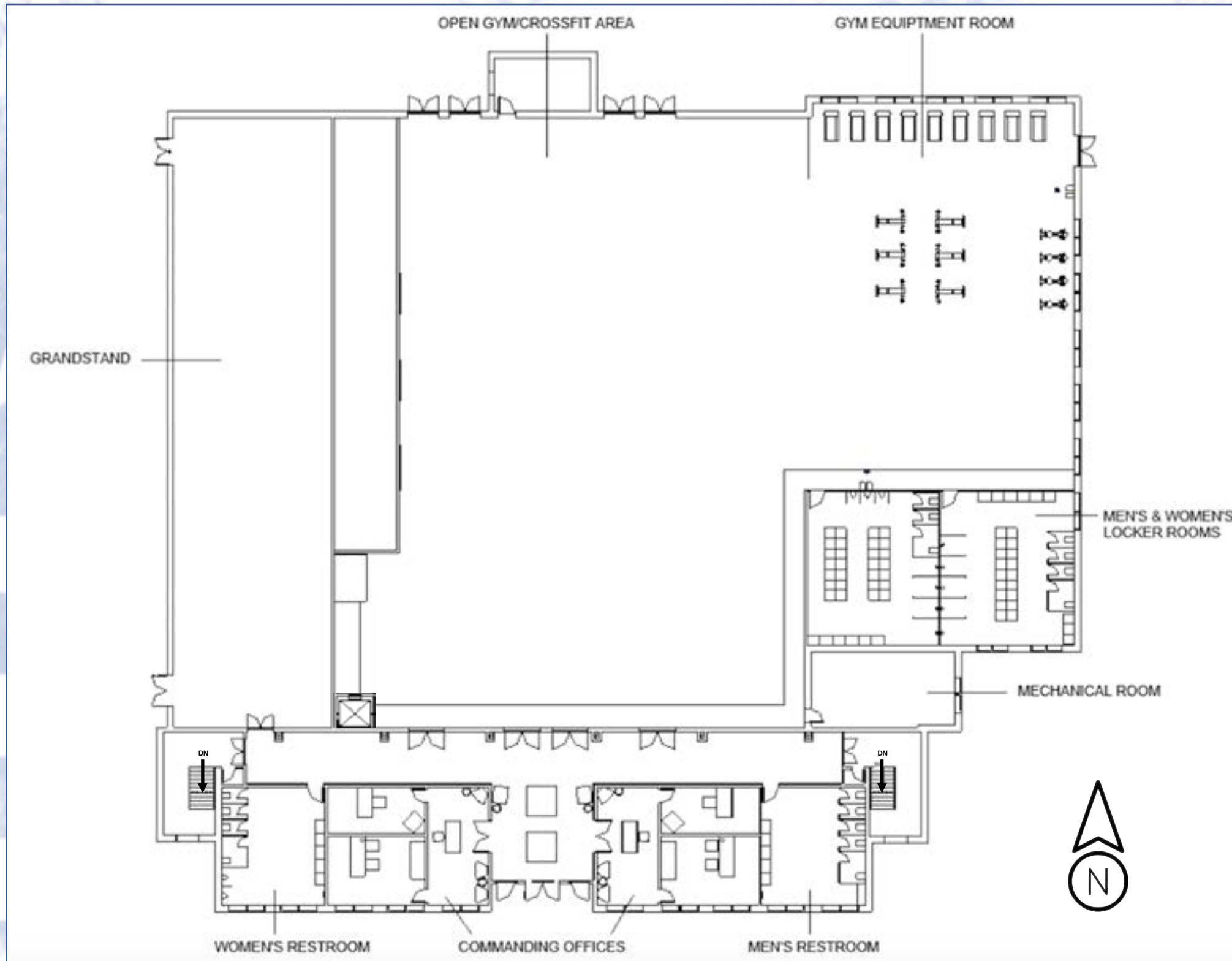


# FURNITURE PLAN – LOWEL LEVEL

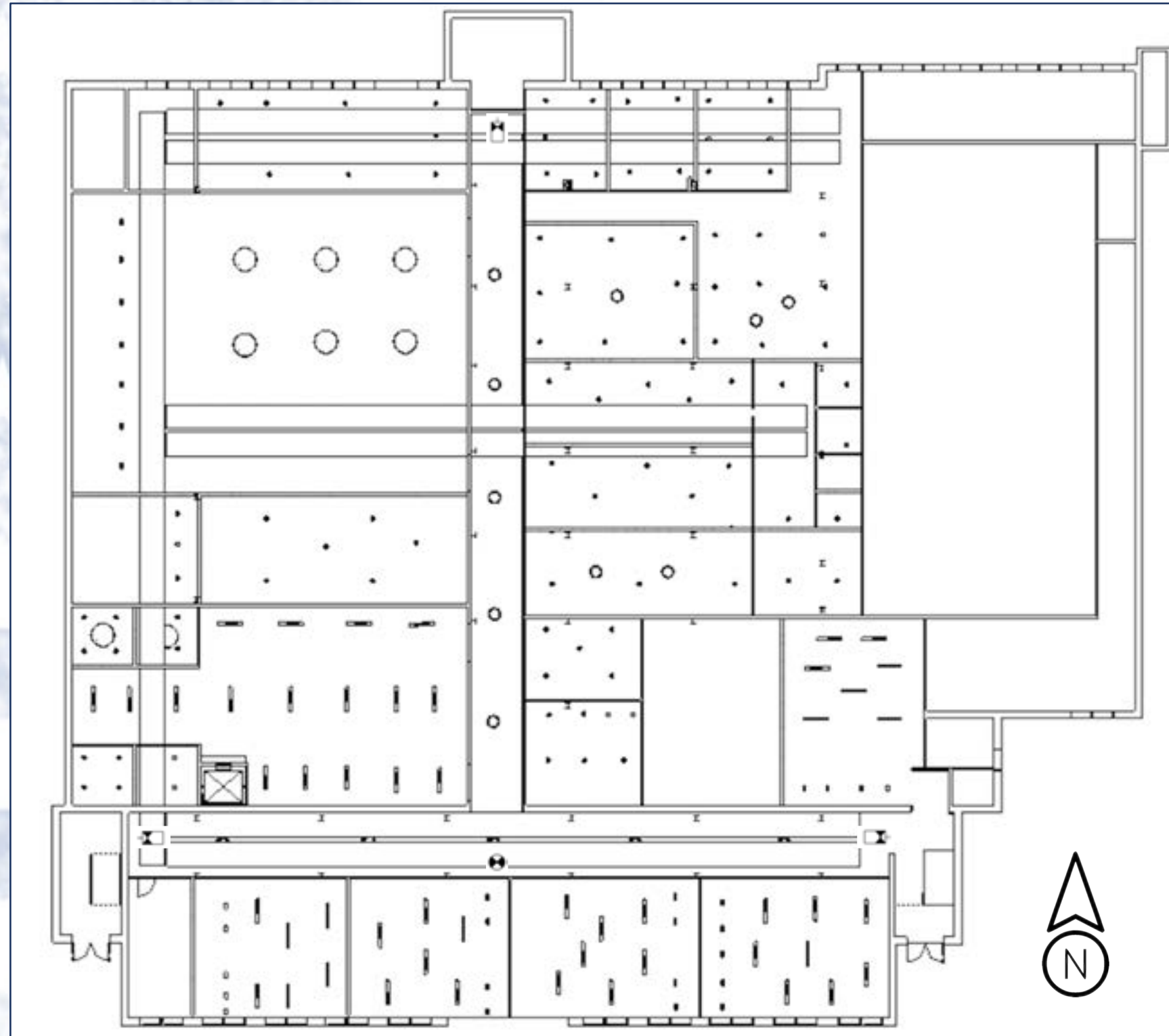






# FURNITURE PLAN – UPPER LEVEL



# REFLECTED CEILING PLAN – LOWER LEVEL

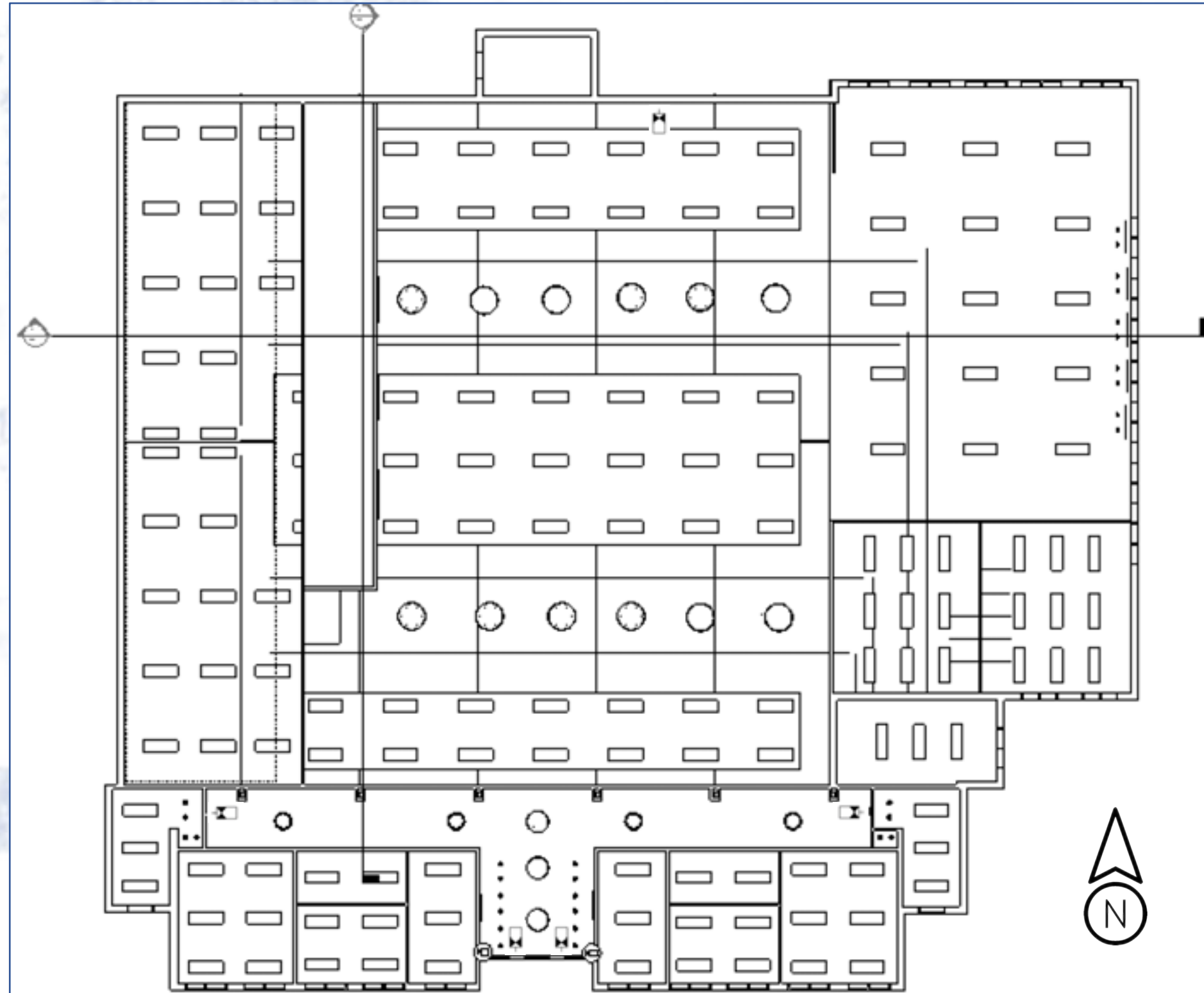


## Lighting legend






-  Recessed can lighting, LED, 6"
-  Large pendant lighting, LED, 36"
-  Mid-size pendant lighting, LED, 18"
-  Direct, indirect lighting, LED, 36" X 12"
-  Exit signage

Ceiling height in main corridors and banquet/event room: **14' AFF**  
Ceiling height in enclosed rooms (i.e.. Computer labs, lounges, offices, and class rooms): **9' AFF**

# REFLECTED CEILING PLAN – UPPER LEVEL



## Lighting legend

-  Recessed can lighting, LED, 6"
-  Large pendant lighting, LED, 36"
-  Mid-size pendant lighting, LED, 18"
-  Direct, indirect lighting, LED, 36" X 12"
-  Exit signage

Ceiling height in main corridors, locker rooms and restrooms: **14' AFF**

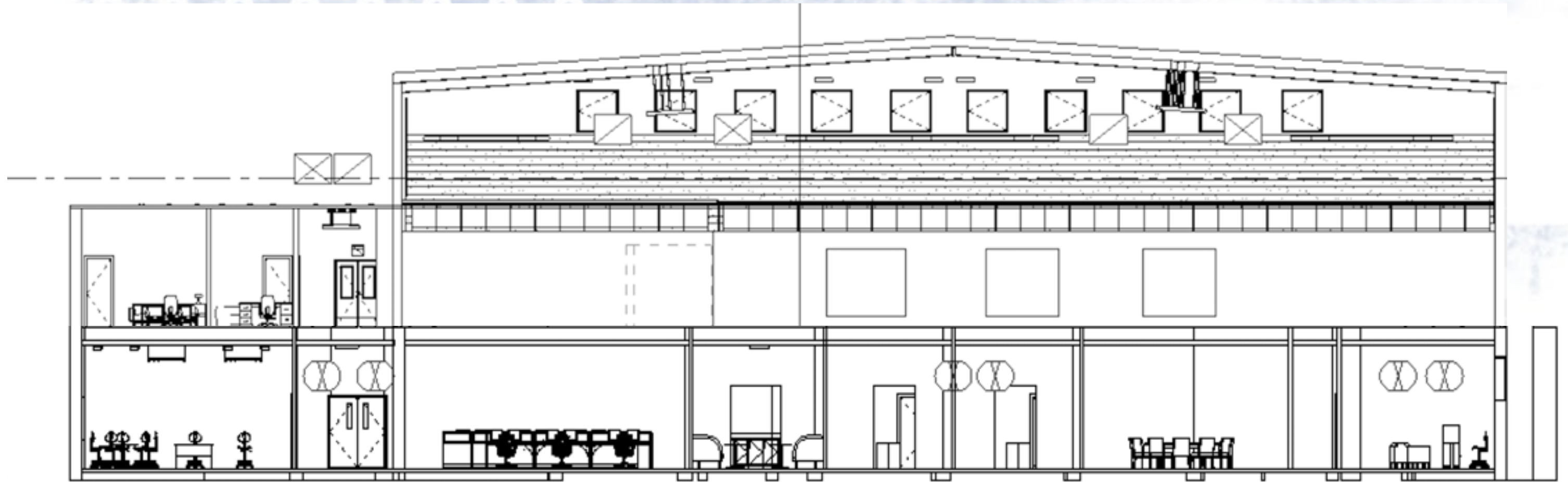
Ceiling height in enclosed rooms (offices and reception rooms): **9' AFF**

CrossFit and open Gym Ceiling heights: **25' AFF**

Drop ceiling panels in CrossFit gym: **18' AFF**

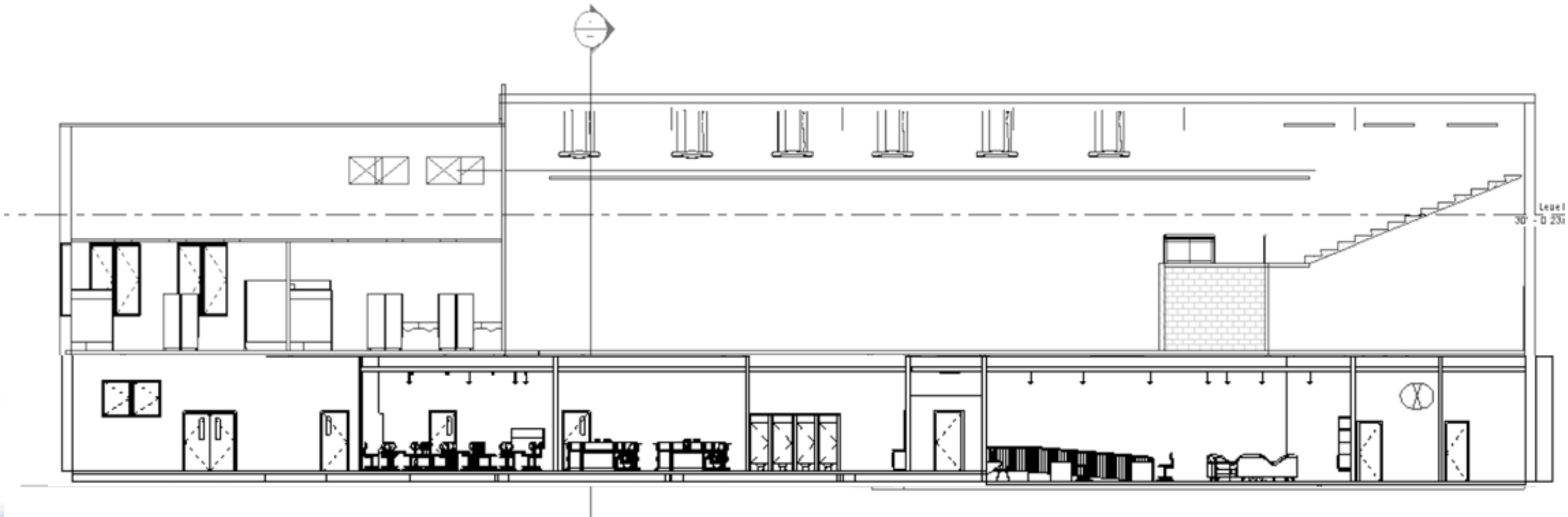


# BUILDING SECTIONS – EW VIEW





# BUILDING SECTIONS – NS VIEW





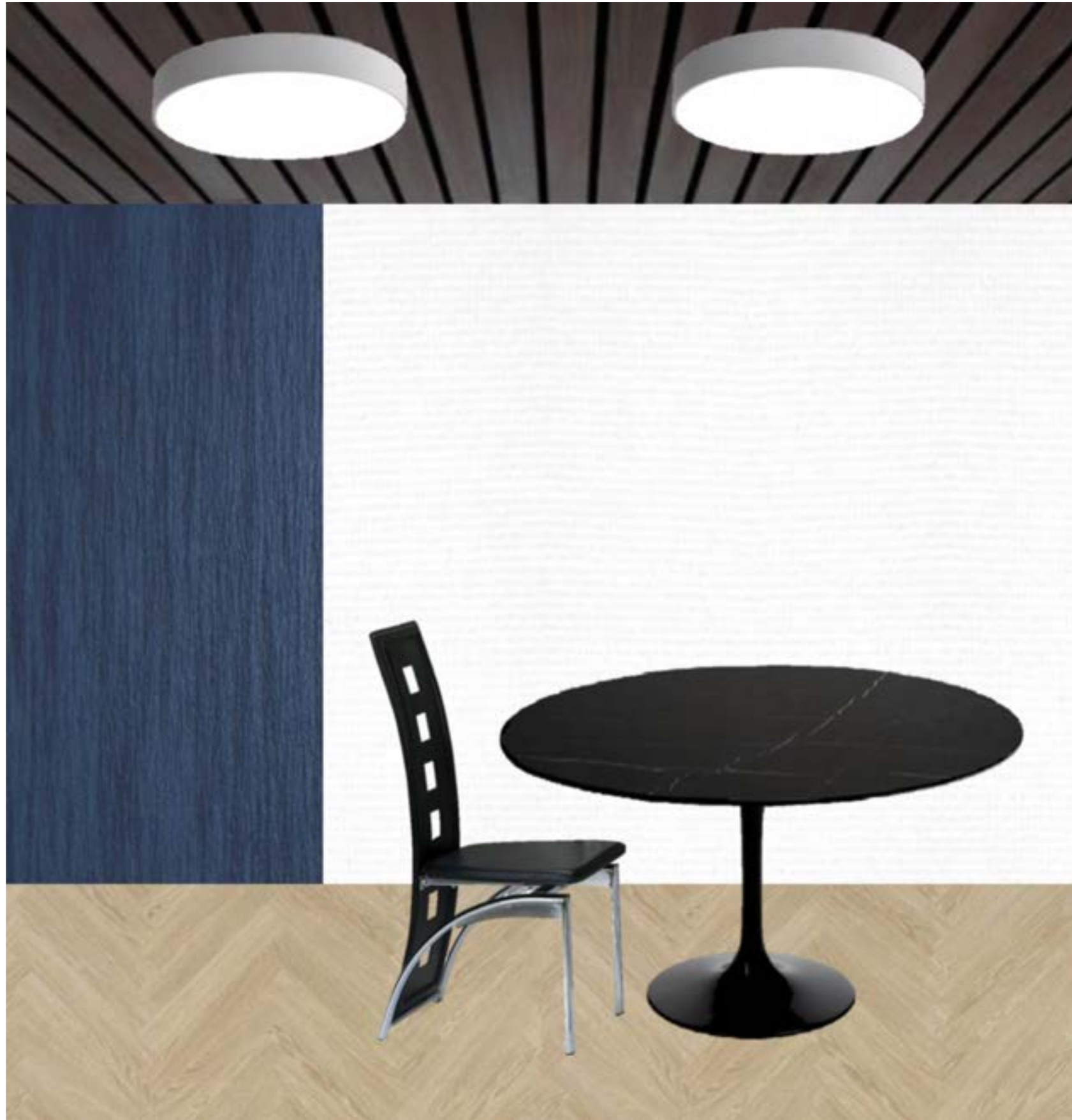
ANNA'S  
DOWNSTAIRS  
REDNERINGS

---

















CAMERON'S UP-  
STAIRS  
REDNERINGS

---





**ENTRYWAY  
FURNITURE AND  
FINISHES**









**GRIT**

**EXECUTION**

**TALENT**

**LIMITLESS**

**HUSTLE**





CAITLIN'S  
DOWNSTAIRS  
REDNERINGS

---

