



DIVERSIFY DESIGNS

Christin Cunningham – Project Manager

Christy Reynolds – Job Captain

Kiyah Harris – Communication Manager

Project Program

Wellness Center in Christenbury Memorial Gym:

ECU Center for Counseling and Student Development:

The mission of the Center for Counseling and Student Development (CCSD) is to enhance personal growth through developmental, preventive, and therapeutic programming designed to facilitate skill development, improve functioning, and increase understanding of self and others. The CCSD's programs and services are designed to be an integral part of the university structure and contribute toward the university's mission of education, research, and service. As such, individual and group programs and outreach activities are designed to enhance the quality of life for ECU students in the areas of cognitive, emotional, social, career, and academic development. The CCSD staff affirm an inclusive definition of diversity and respect and celebrate the richness of each student's experience.

Family Therapy Clinic:

The Family Therapy Clinic is operated year round by the MFT program as a training facility for students. The clinic has space for students to review session tapes, complete casework and paperwork, and relax and study. The goal of the East Carolina University Family Therapy Clinic is to provide an opportunity for teaching and learning among professionals and students, and to provide high-quality services to families, couples, and individuals. By offering direct services to the public, the Clinic helps to bridge the gap between theory and practice and provides a unique service to the Greenville community and surrounding areas.

Department of Nutrition Science:

The Department of Nutrition Science offers multidisciplinary approaches to promote human health and well-being through the food and nutrition. The Department applies the biological, physiological, behavioral, and social sciences to understand and address challenges in dietetics, nutrition, and food systems. A hallmark of our work is the integration of “big science” innovations into our core values—learning, discovery, and engagement—to make a difference in individuals, families, and communities.

Overall Program:

The plan is to use the space as a clinical space for the students and faculty of ECU. The space will home different counseling facilities. At East Carolina, we have a Student Counseling Center that is located within Umstead Hall. By moving this center to Christenbury, it maximizes the space of the center, but also is a more reliable location for the space to be. The current center is tucked away from students and is not in an ideal space. By turning Christenbury Memorial Gym into a Wellness Center, it will include family counseling, personal counseling, and body wellness help.

Concept Statement

The Eternal Knot:

Unity

“Unity is strength. . . when there is teamwork and collaboration, wonderful things can be achieved.” - *Mattie Stepanek*

Community

a space to bring together different ways of life, all generations, ethnicities, and backgrounds into one location to tie into one another and create a larger community

Connection

create an interrelationship with students, alumni, professors, and local personal and families

Eternity/Timelessness

preserve historical culture of Christenbury while creating a space that's not affected by time

Health

a safe space to take a break from one's own mind, a place to help with one's physical needs, and a gathering place to keep the connection of families strong

Culture

be the center to preserve the importance of arts, humanities, intellectual activities and achievement of different social groups and generations

When researching the different generation's culture, values, and behaviors, there was a lot that needs to be taken into consideration for this project:

- the baby boomers, ages 51-70, value relationships and connectivity
- gen X, ages 35-50, value work-life balance and personal development
- the millennials, mid 20-34, value social status and technology
- gen z, ages 4-19, are still in the process of development

So how do you tie together the different values and beliefs?

- Bring different generations together in a space where they feel connected
- Community is one of the biggest cultural aspects for East Carolina University... design a space that connects the community while serving as a timeless space.
- Christenbury has a lot of history that is worth preserving so we wanted to create a space that could incorporate the historical value while connecting the past generations with present and future generations

What will attract the different generations and communities to the Christenbury Wellness Center?

In research: even with gaps in each generation's values and beliefs, family, health, and wellness are of great significance to individuals. By incorporating each of these values, we are providing a meaningful space that will bring unity within the community.

In design:

- **clear visual relationship of the different spaces,**
- **organization,**
- **unified composition,**
- **inclusion of the history of ECU intertwined within new spaces, shared spaces between students, alumni, and community**



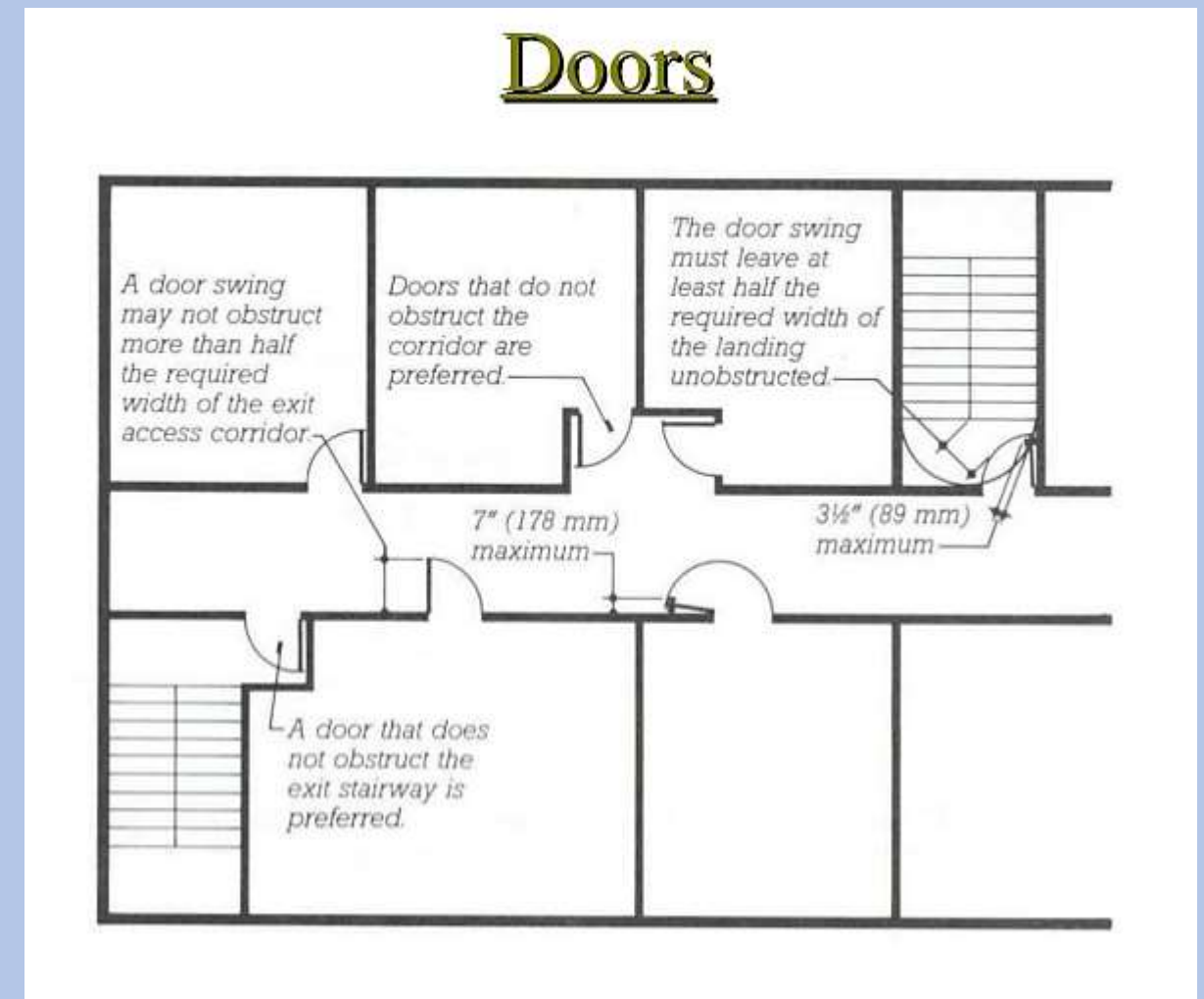
Challenge Resolution Statement

The challenges faced within the project are:

- The building is not ADA accessible
- The flooring on the first floor is not leveled and needs to be brought up to code
- Egress needs to be taken into consideration throughout the whole building

As a team the following were addressed and solved:

- Implementing ADA code throughout the building
- Assess the existing non leveled flooring on the first floor
- Calculate means of egress for the building



Construction Budget

Main Level	Square Footage	Construction Cost	Furniture Cost
Restrooms	\$ 952.00	\$ 285,600.00	
Office/Conference	\$ 926.00	\$ 277,800.00	\$ 46,300.00
Trampoline Park	\$ 5,714.00	\$ 1,714,200.00	
Gym	\$ 14,426.00	\$ 4,327,800.00	\$ 315,650.00
Cooridor	\$ 1,512.00	\$ 453,600.00	
Lounge Area	\$ 480.00	\$ 14,400.00	\$ 24,000.00
Stairwell	\$ 441.00	\$ 132,300.00	
TOTAL:	\$ 24,451.00	\$ 7,205,700.00	\$ 385,950.00

TOTAL COST FOR MAIN LEVEL \$ 7,591,650.00

Mezzanine Level	Square Footage	Construction Cost	Furniture Cost
TOTAL	\$ 3,678.00	\$ 1,103,400.00	\$ 183,900.00

TOAL COST FOR MEZZANINE LEVEL \$1,287,300.00

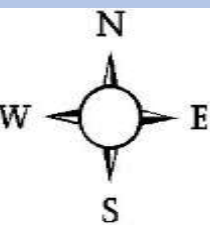
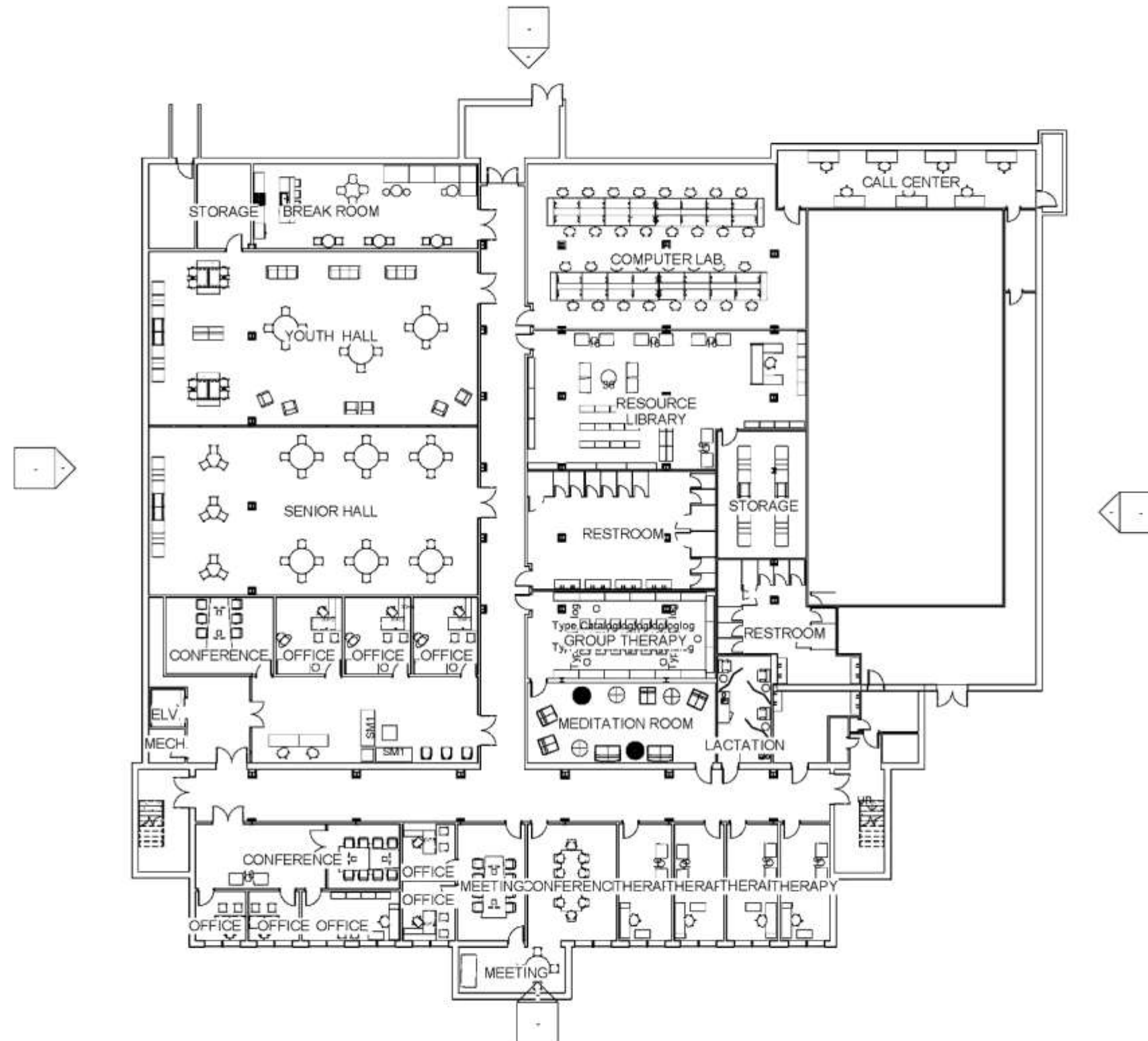
Lower Level	Square Footage	Construction Cost	Furniture Cost
Restrooms	\$ 1,528.00	\$ 458,400.00	
Office/Conference	\$ 8,721.00	\$ 2,616,300.00	\$ 436,050.00
Cooridor	\$ 2,317.00	\$ 695,100.00	
Lounge Area	\$ 970.00	\$ 291,000.00	\$ 48,500.00
Stairwell	\$ 445.00	\$ 133,500.00	\$ 22,250.00
Storage	\$ 760.00	\$ 228,000.00	\$ 38,000.00
Activity Space	\$ 4,330.00	\$ 1,299,000.00	\$ 216,500.00
Break Room	\$ 732.00	\$ 219,600.00	\$ 36,600.00
Mechanical Room	\$ 387.00	\$ 116,100.00	
TOTAL:	\$ 20,190.00	\$ 6,057,000.00	\$ 797,900.00

TOTAL COST FOR LOWER LEVEL \$ 6,854,900.00

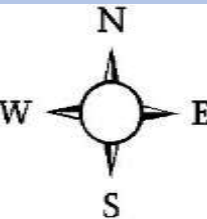
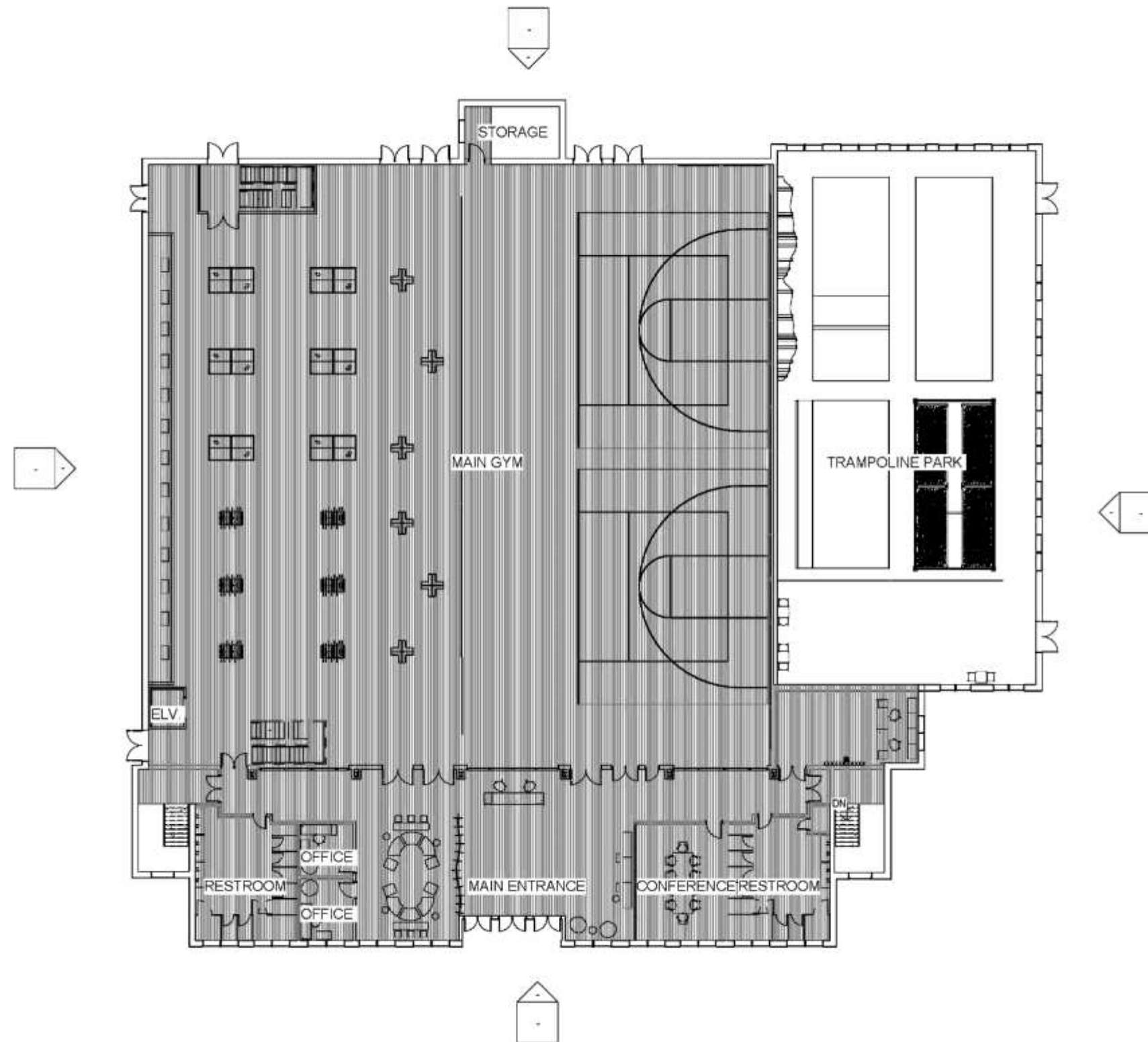
Structural Steel at Pool	Tons	Steel Cost
	1000	\$ 3,800,000.00
TOTAL:		\$ 3,800,000.00

TOTAL OVERALL COST \$ 19,533,850.00

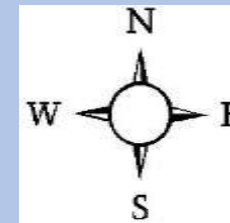
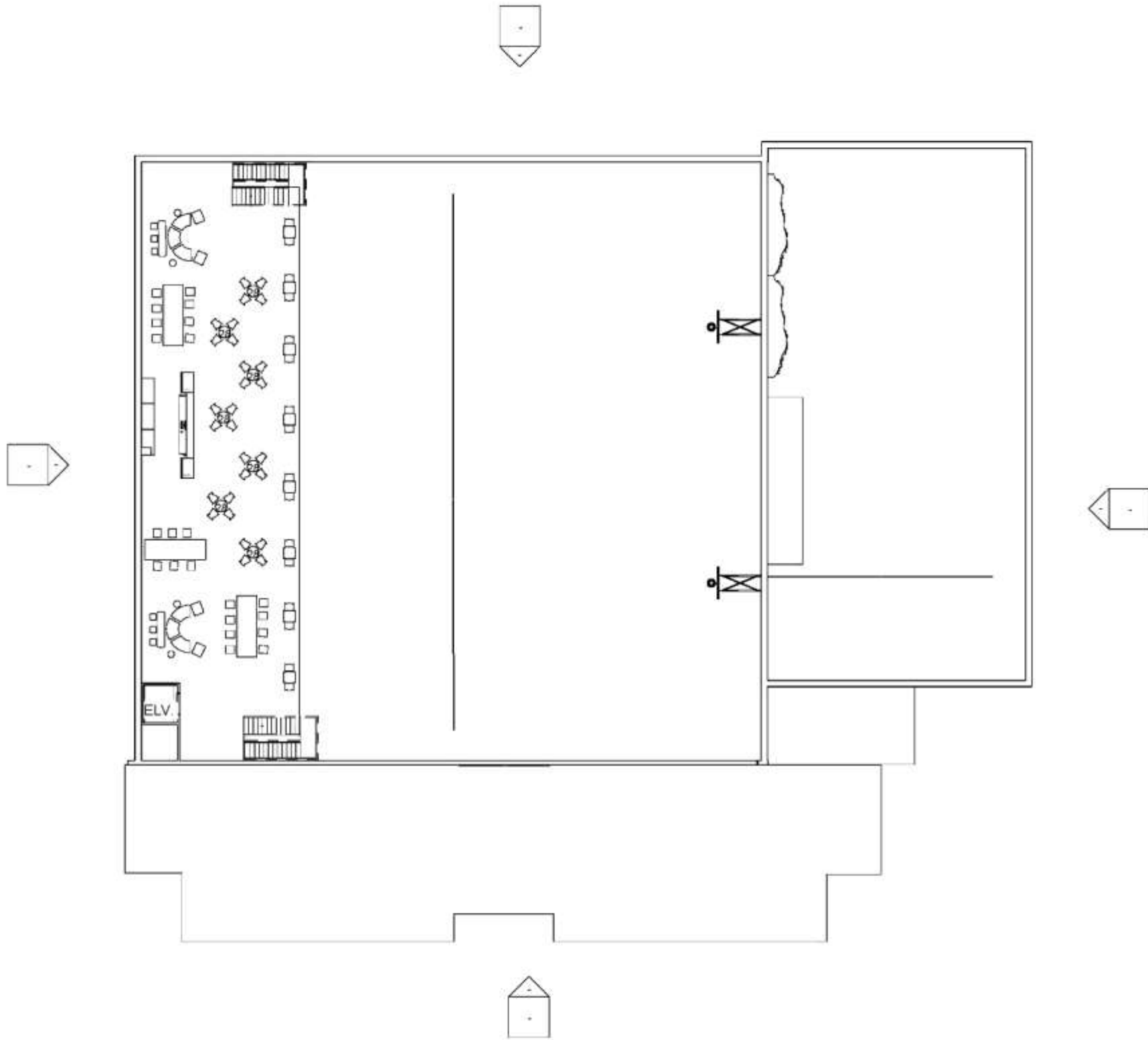
Furniture Plan – First Floor



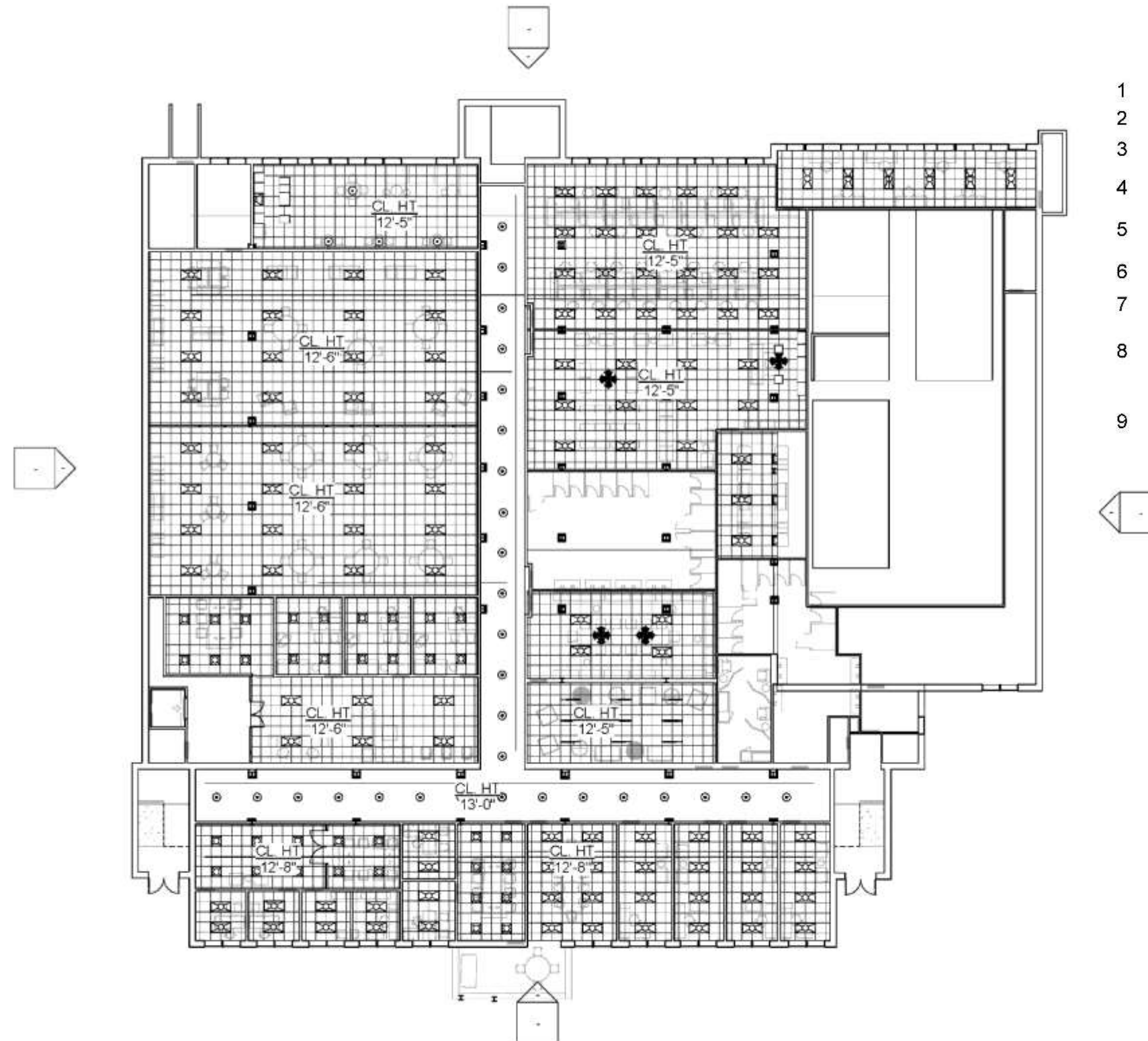
Furniture Plan – Second Floor










Furniture Plan – Mezz. Level

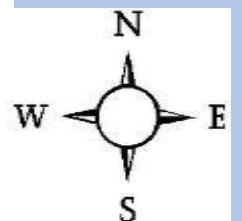


Reflected Ceiling Plan – First Floor

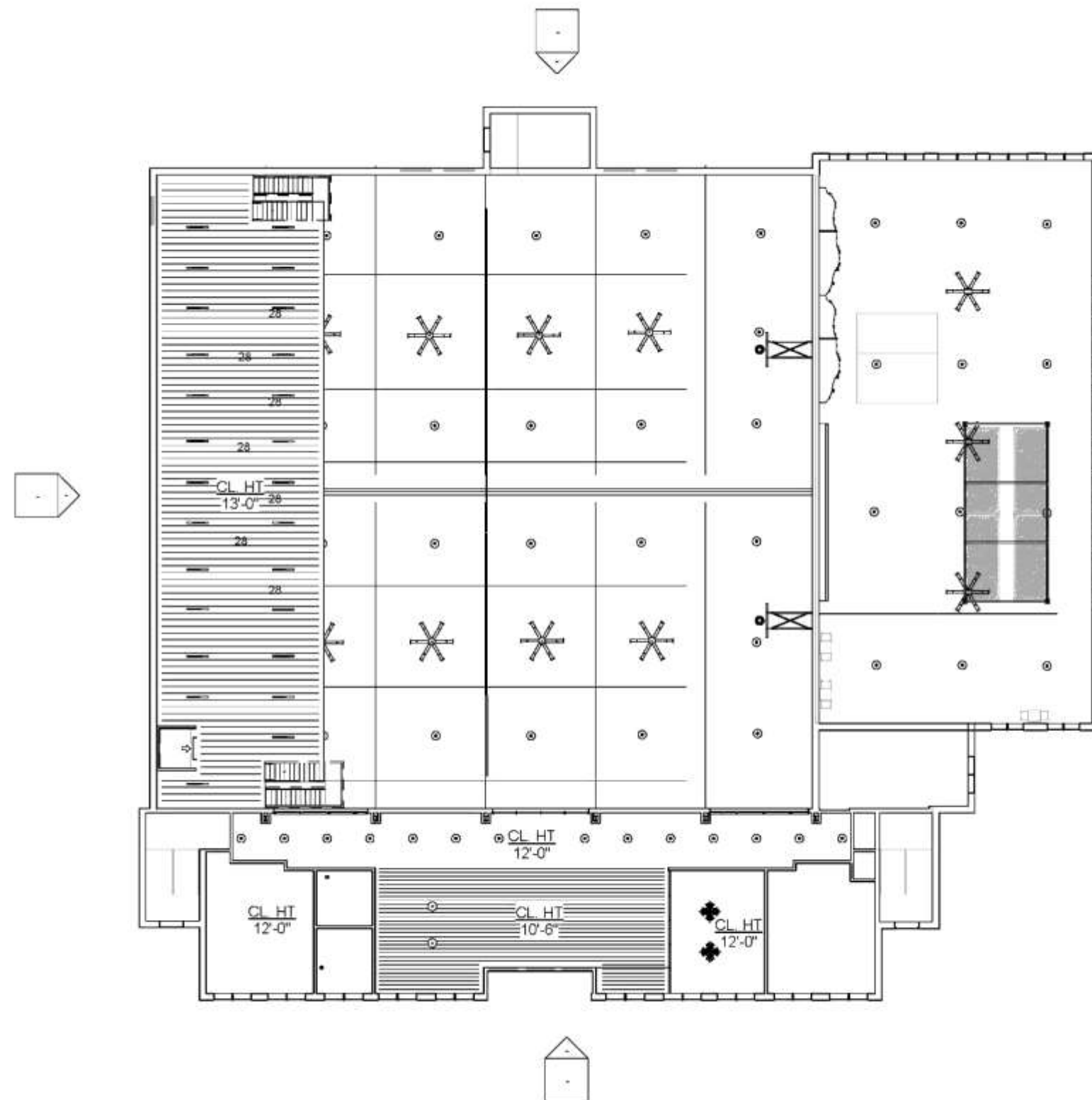


Lighting Legend

- 1  Caravaggio Pendant Light - 120V
- 2  Drop Pendant Light - 120V
- 3  Recessed Cooper NeoRay Light - 120V
- 4  Recessed Cooper NeoRay Straight Narrow Light - 120V
- 5  M Troffer Light Parabolic Rectangular Light -
- 6  M Troffer Light Parabolic Square Light -
- 7  3D Buzzlight Pendant - 10V
- 8  Caravaggio Pendant Light - 120V
- 9  Fan Ceiling Bigass Fan Basic

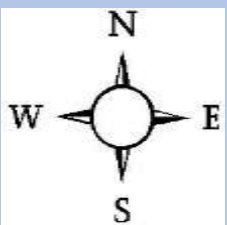


Reflected Ceiling Plan – Second Floor

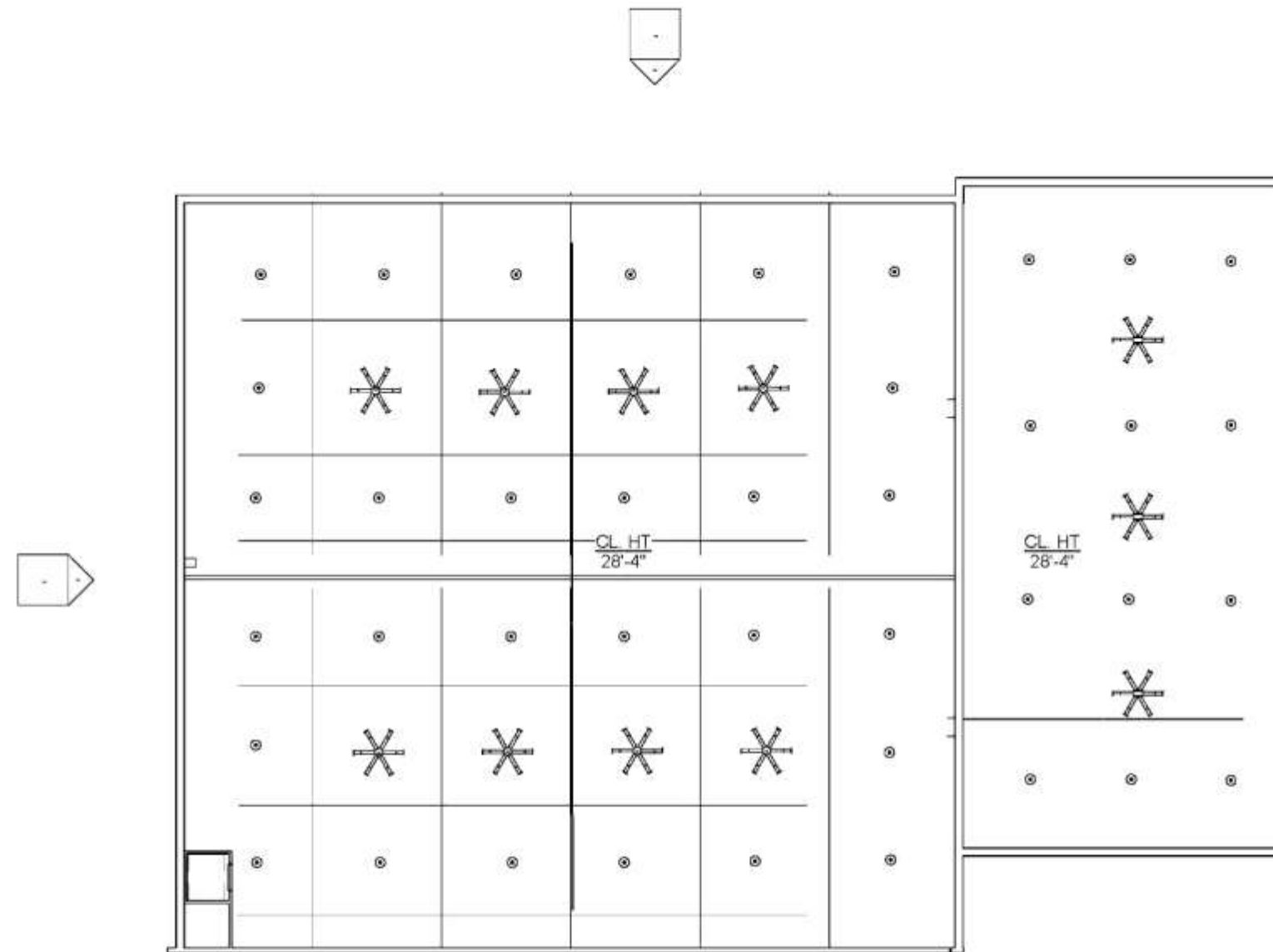


Lighting Legend

- | | | |
|---|--|---|
| 1 | | Caravaggio Pendant Light - 120V |
| 2 | | Drop Pendant Light - 120V |
| 3 | | Recessed Cooper NeoRay Light - 120V |
| 4 | | Recessed Cooper NeoRay Straight Narrow Light - 120V |
| 5 | | M Troffer Light Parabolic Rectangular Light - |
| 6 | | M Troffer Light Parabolic Square Light - |
| 7 | | 3D Buzzlight Pendant - 10V |
| 8 | | Caravaggio Pendant Light - 120V |
| 9 | | Fan Ceiling Bigass Fan Basic |

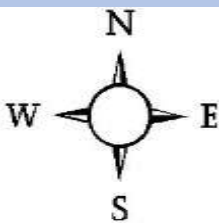


Reflected Ceiling Plan – Mezz. Level

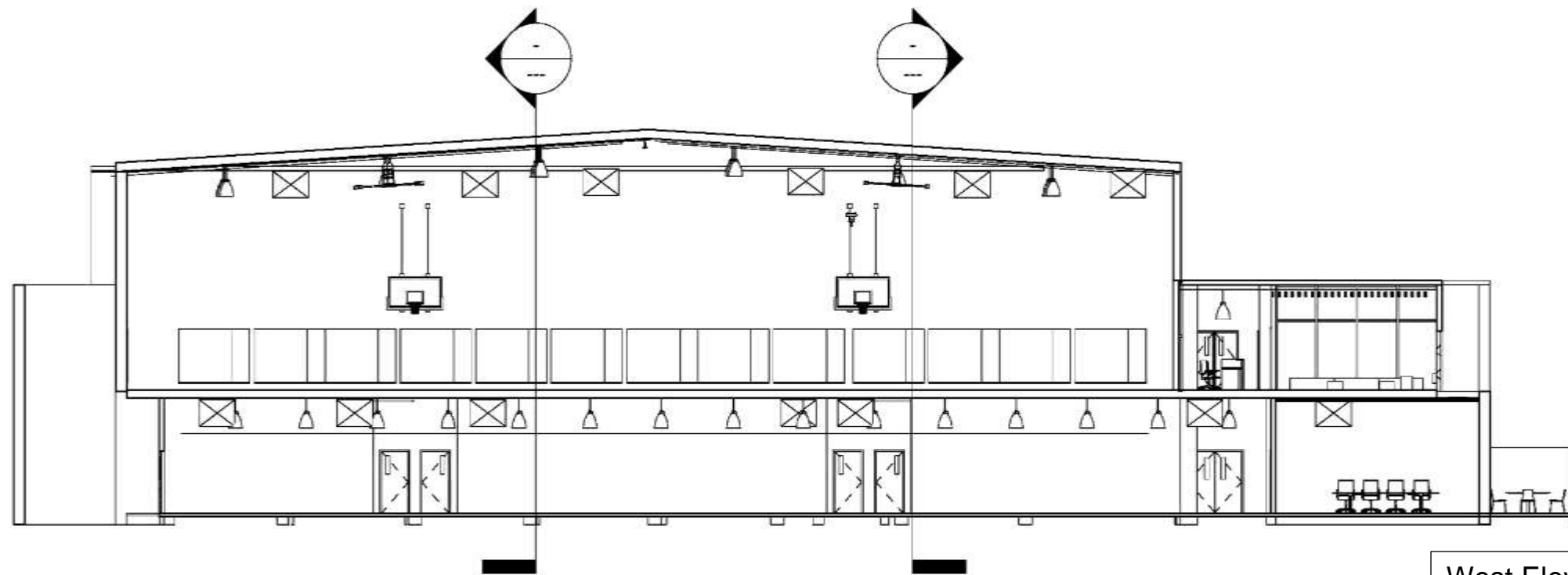


Lighting Legend

- 1  Caravaggio Pendant Light - 120V
- 2  Drop Pendant Light - 120V
- 3  Recessed Cooper NeoRay Light - 120V
- 4  Recessed Cooper NeoRay Straight Narrow Light - 120V
- 5  M Troffer Light Parabolic Rectangular Light -
- 6  M Troffer Light Parabolic Square Light -
- 7  3D Buzzlight Pendant - 10V
- 8  Caravaggio Pendant Light - 120V
- 9  Fan Ceiling Bigass Fan Basic



East and West Elevation Views

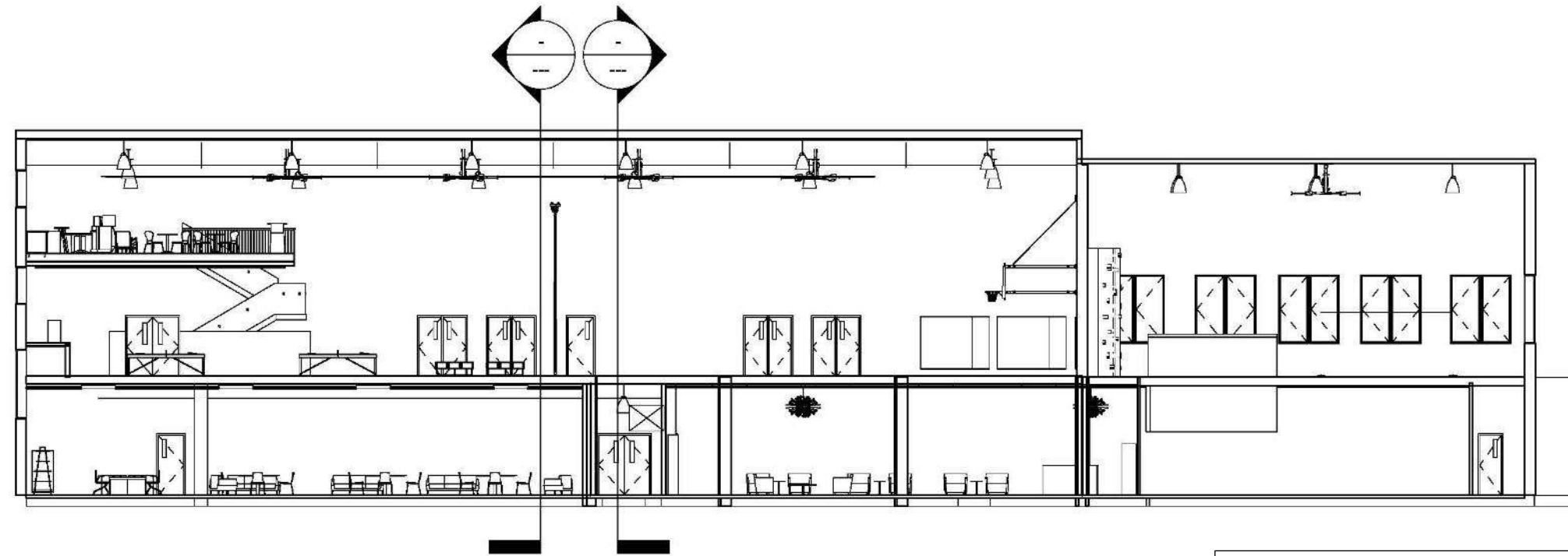


West Elevation View

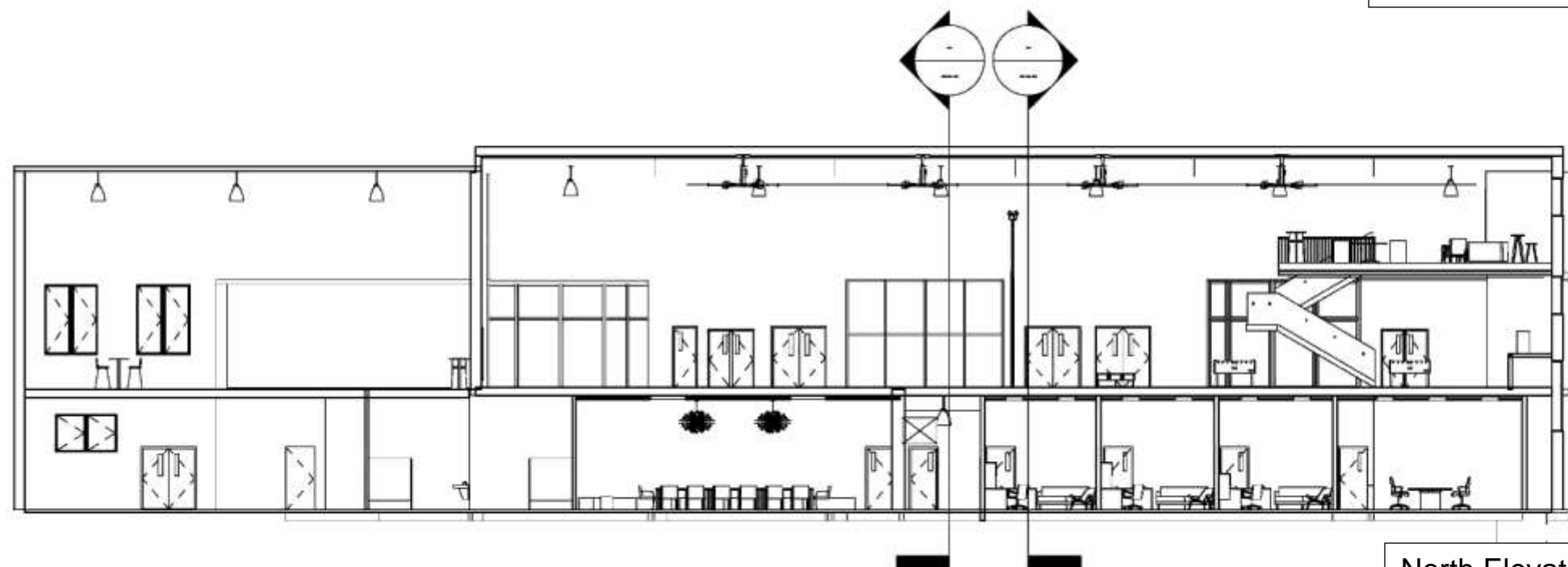


East Elevation View

North and South Elevation Views

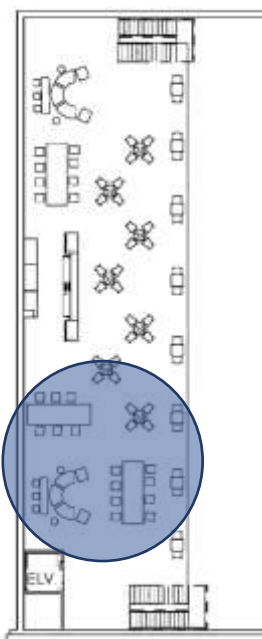


South Elevation View



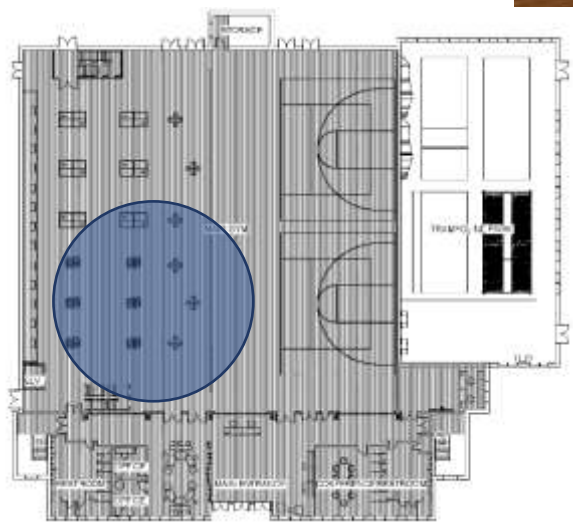
North Elevation View

Color Rendered Perspectives



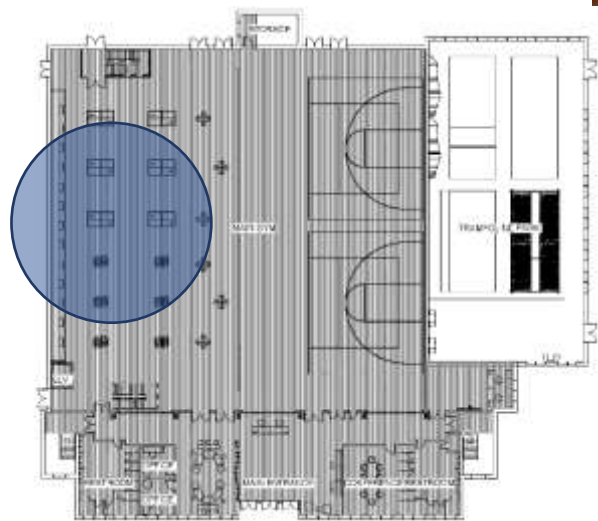
Mezzanine Level Lounge

Color Rendered Perspectives



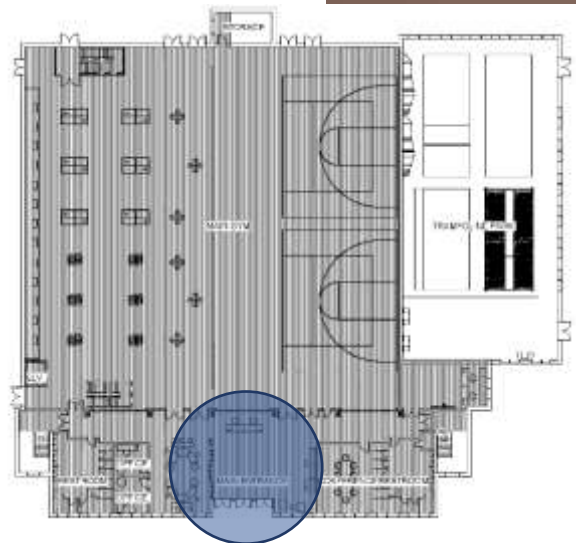
Game and Activity Space – View 1

Color Rendered Perspectives



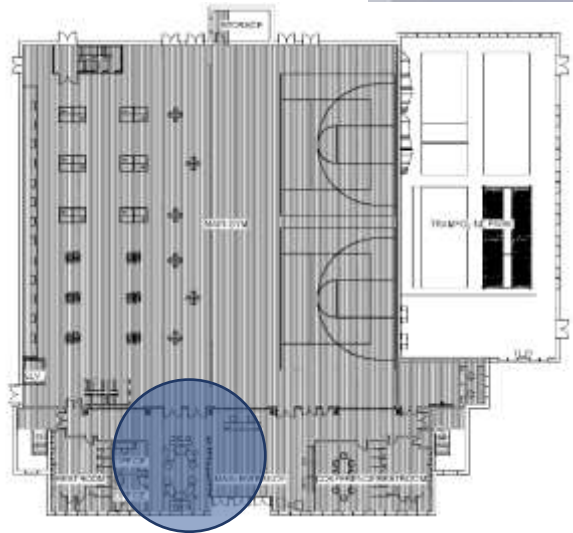
Game and Activity Space – View 2

Color Rendered Perspectives



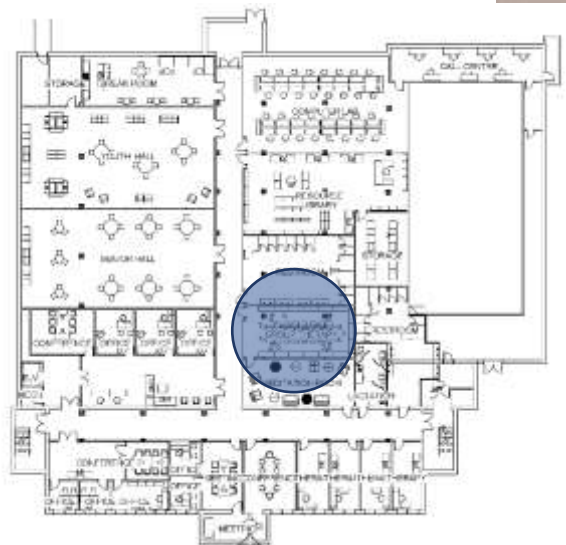
Front Entry

Color Rendered Perspectives



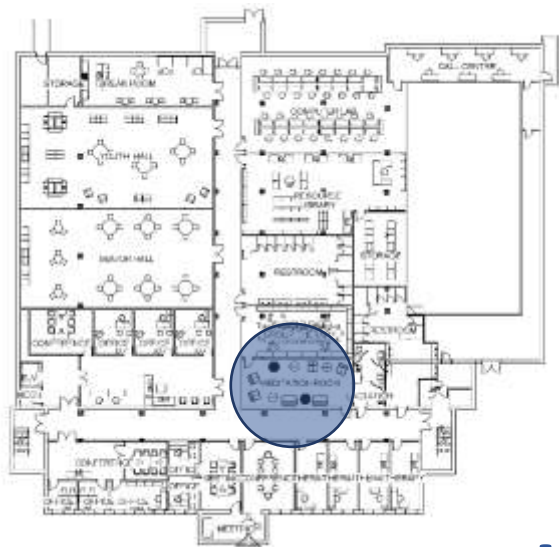
Front Entry Lounge

Color Rendered Perspectives



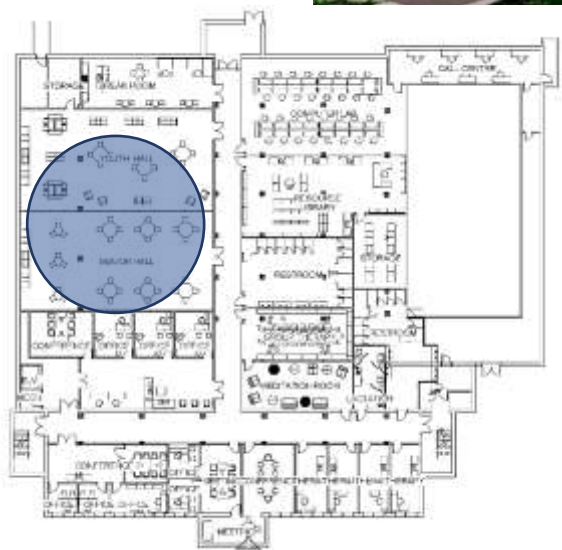
Group Therapy Room

Color Rendered Perspectives



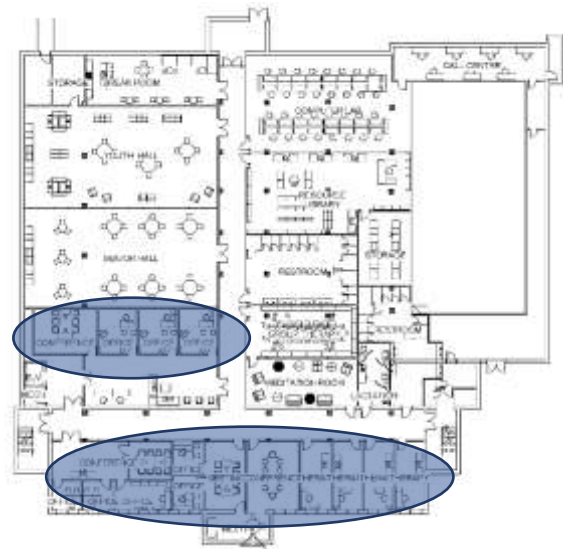
Meditation Lounge

Color Rendered Perspectives



Senior Center Activity Space

Color Rendered Perspectives



Individual Therapy Space

Images: Furniture & Finishes



Images: Furniture & Finishes

