

# CHRISTENBURY GYMNASIUM



Mackenzie Alala, Mandy Vignali, and Brenden Fout  
Portfolio 4 | IDSN 4202 | Spring 2019

# FUNDAMENTAL 52

Mackenzie Alala- Communication Manager

Mandy Vignali- Project Manager

Brenden Fout- Job Captain

## PRELIMINARY BUDGET LINE ITEMS

### Christenbury Budget Sheet

Space	Usable Sq. Footage	Construction Budget	Furniture and Eq. Budget	Structural Steel
Lower Level	20,655	\$ 6,196,500.00	\$ 1,032,750.00	1000
Upper Level	22,550	\$ 6,765,000.00	\$ 1,127,500.00	\$ 3,800.00
Storage	2,035	\$ 610,500.00		
Balcony	2,480	\$ 744,000.00	\$ 124,000.00	
<b>Total</b>		\$ 14,316,000.00	\$ 2,284,250.00	\$ 3,800,000.00
<b>Total for Project</b>				<b>\$ 20,400,250.00</b>

Total project budget does not include demolition of the bleacher area, nor exterior site work.

## CHALLENGE RESOLUTION STATEMENT

The challenges faced:

- Level changes on the bottom floor
- ADA entrances

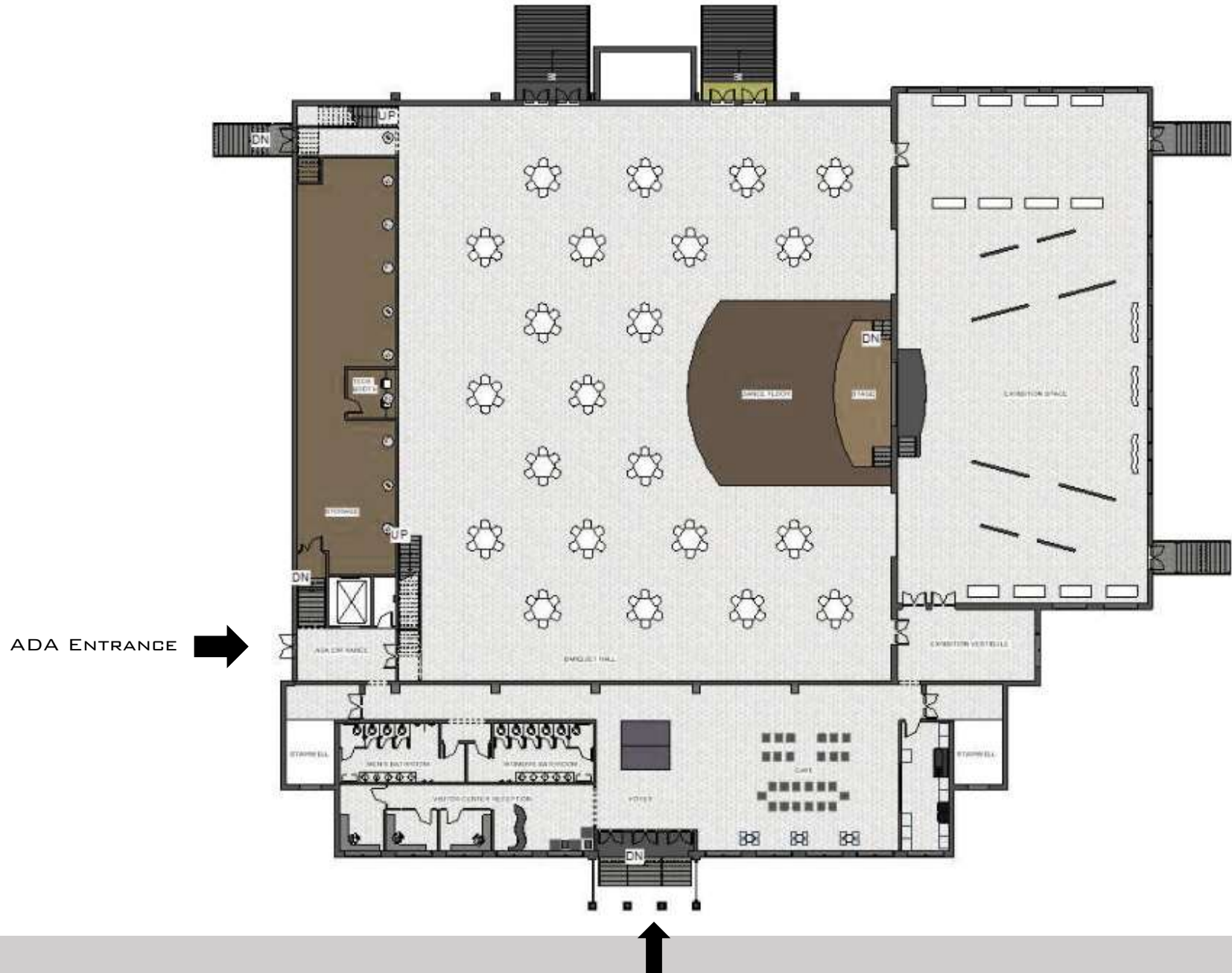
Solutions for the challenges:

- Raise the vertical, center hallway up 1'-3" and create a 1'-3" ramp on the west wing, lower level.
- Make the side entrance on the left of the building ADA with an elevator lobby.



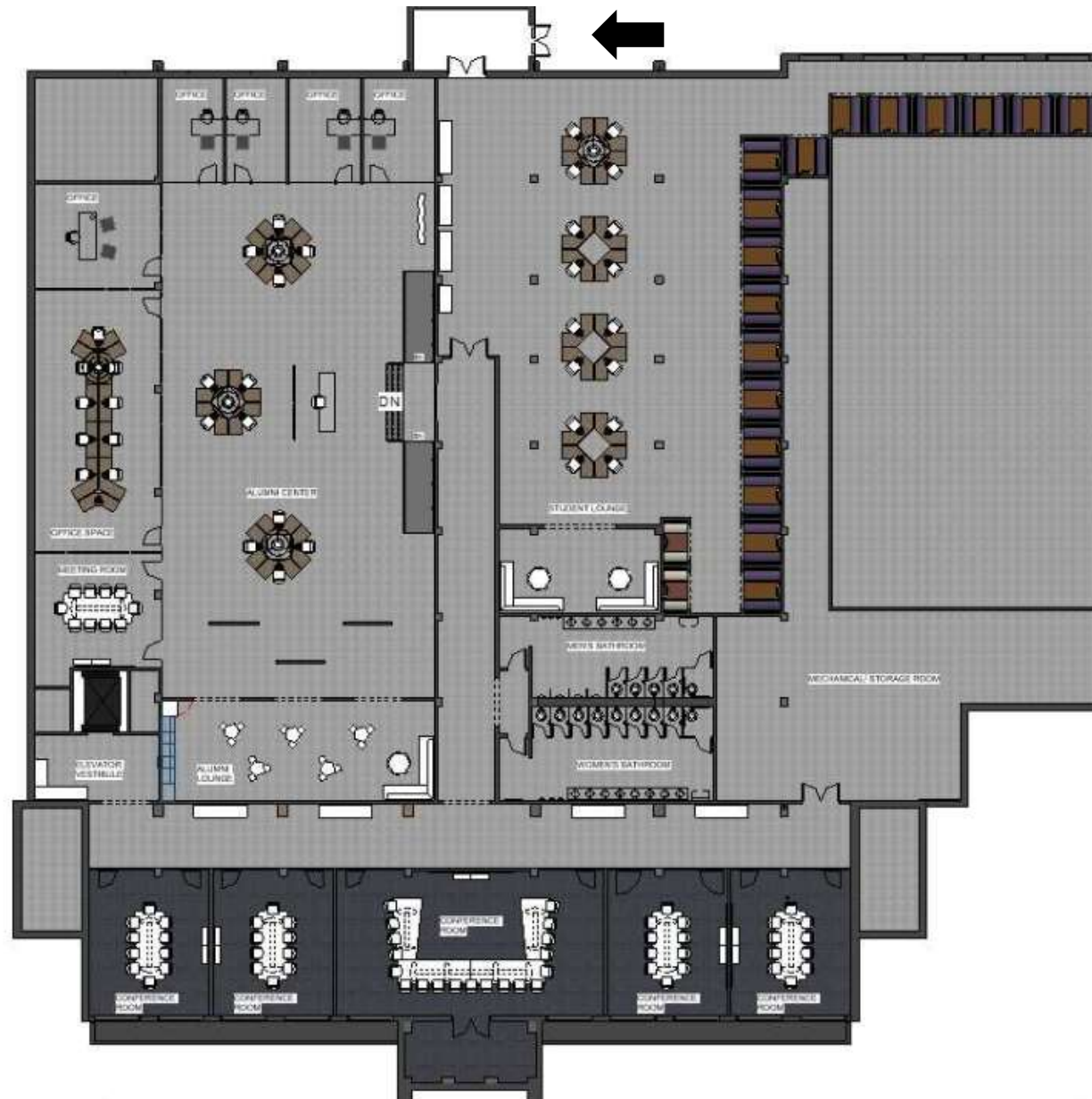
# MAIN LEVEL FLOORPLAN

SCALE: 1/16"=1'0"



# LOWER LEVEL FLOORPLAN

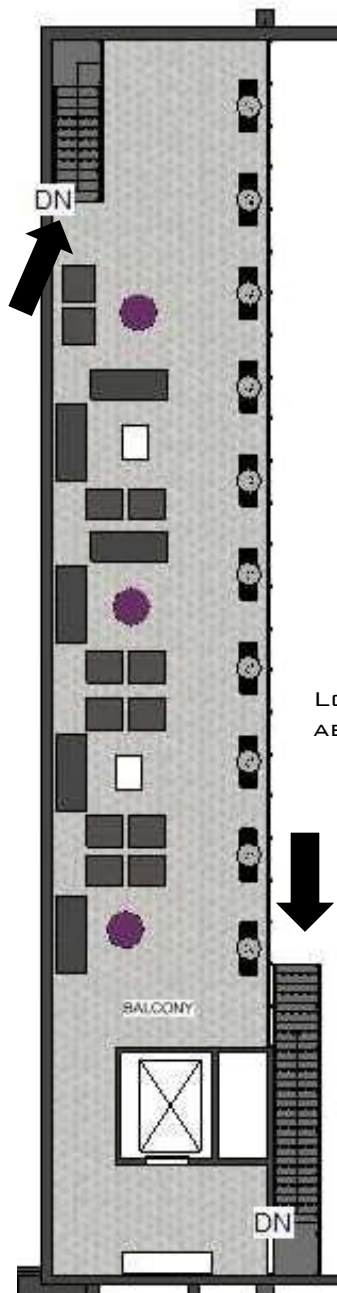
SCALE: 1/16" = 1'0"



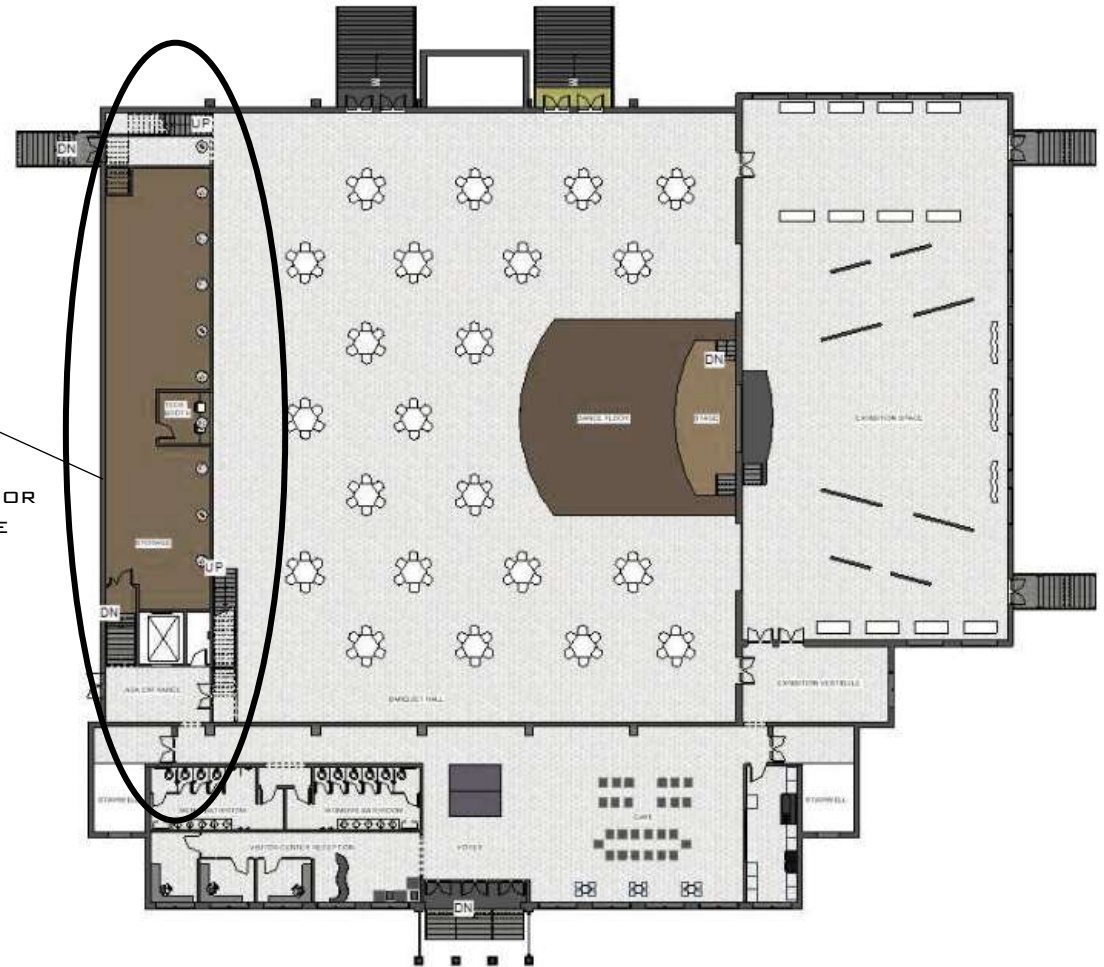


# BALCONY FLOORPLAN

SCALE: 1/16" = 1'0"

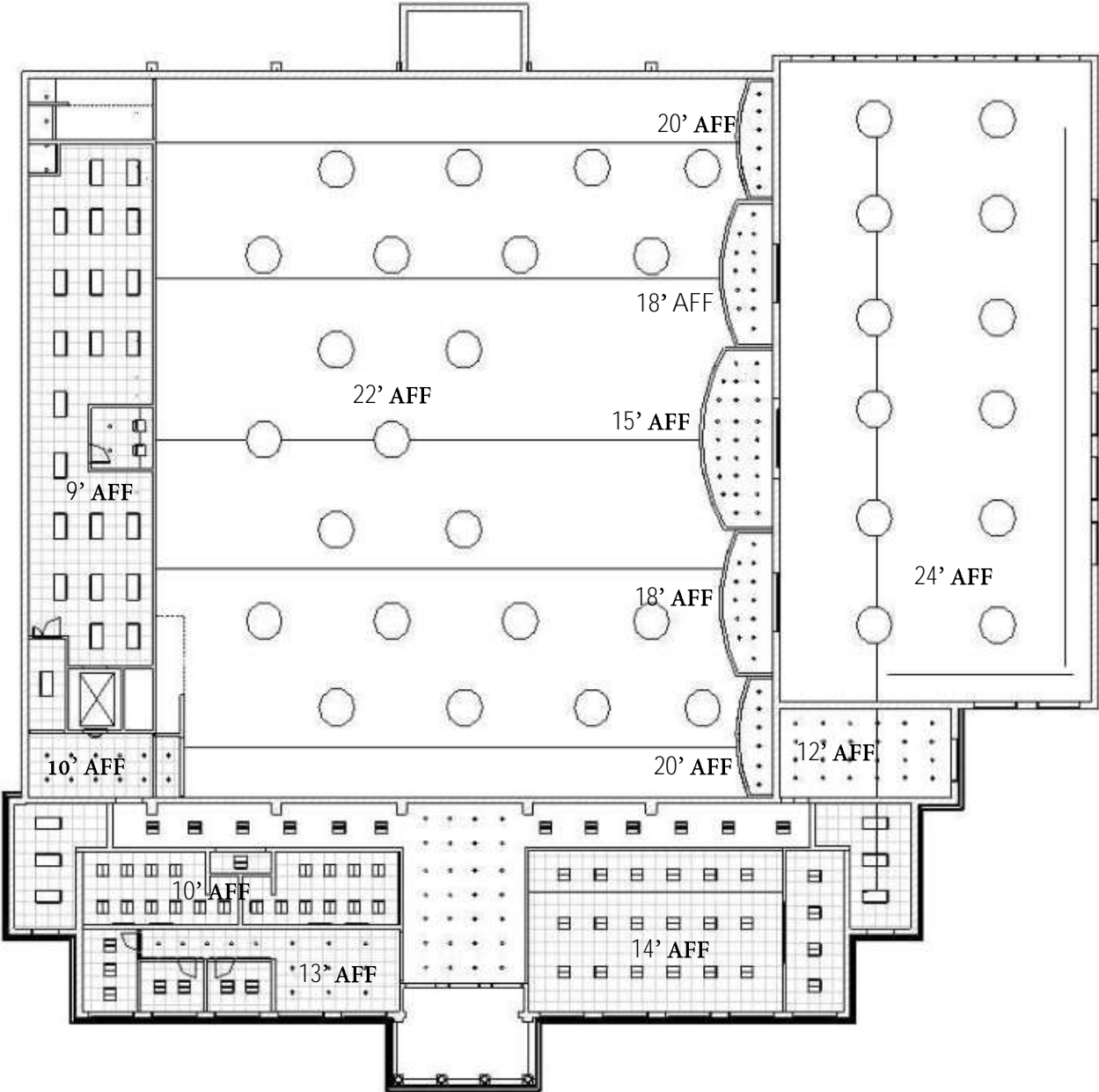


LOCATED A FLOOR ABOVE STORAGE






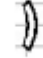



# MAIN LEVEL REFLECTED CEILING PLAN

SCALE: 1/16" = 1'0"



**KEY:**

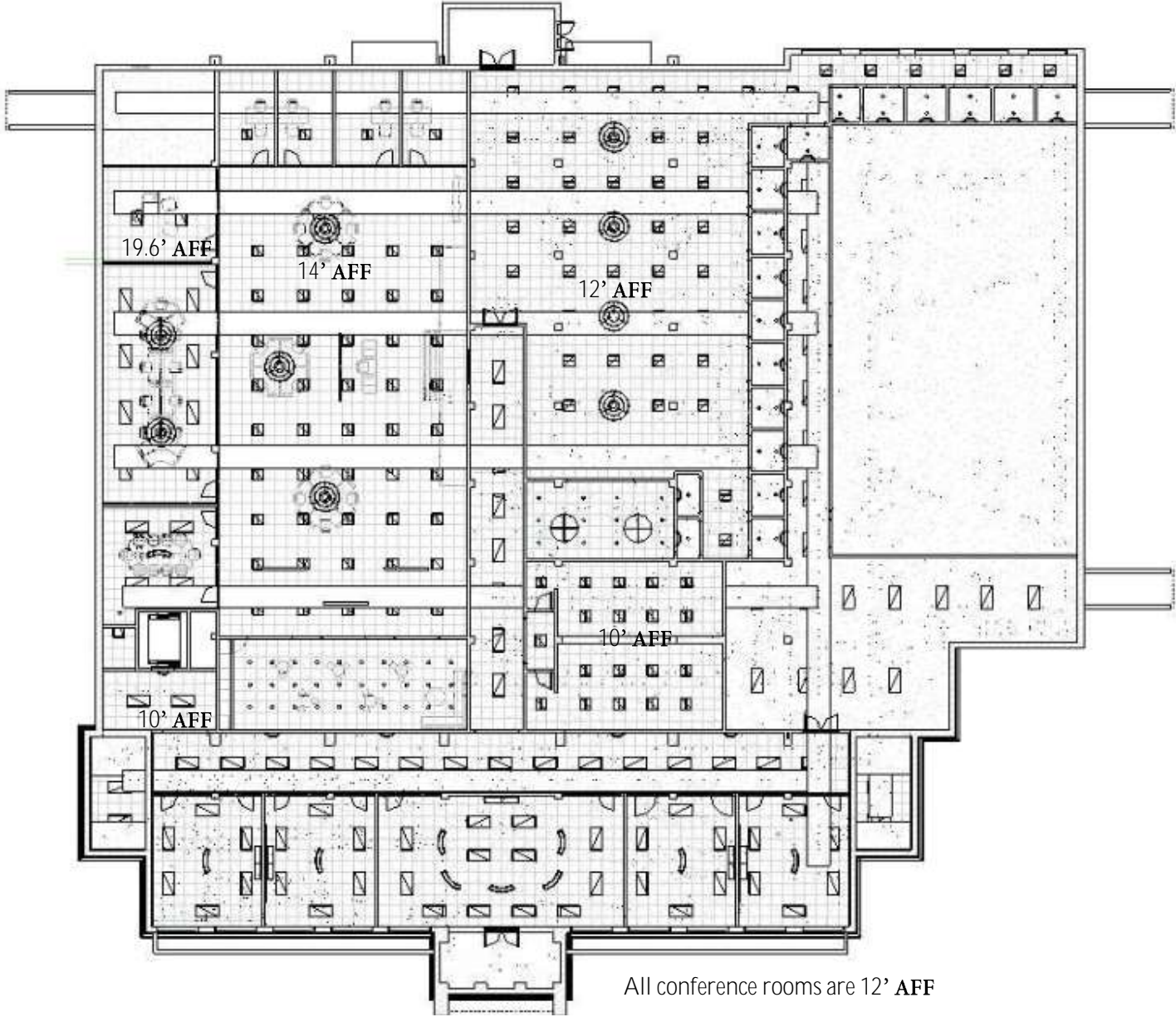
-  SEMI-FLUSH
-  2X2 GRID LIGHT
-  DOWN LIGHT
-  PENDANT
-  CHANDELIER
-  PENDANT
-  2X4 GRID LIGHT












# LOWER LEVEL REFLECTED CEILING PLAN

SCALE: 1/16" = 1'0"



**KEY:**

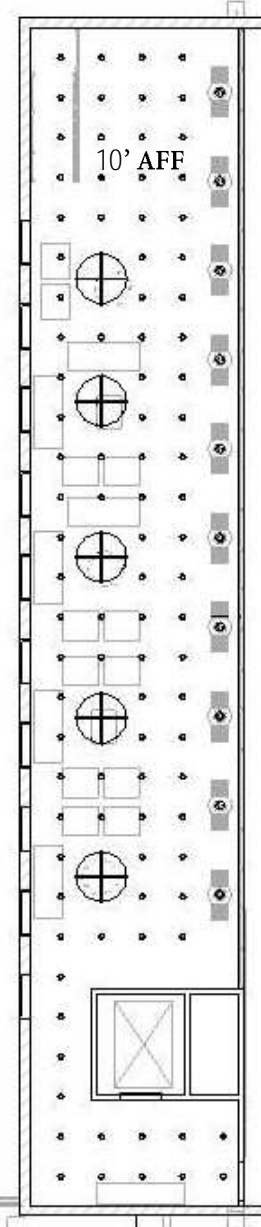
-  SEMI-FLUSH
-  2x2 GRID LIGHT
-  DOWN LIGHT
-  PENDANT
-  CHANDELIER
-  PENDANT
-  2x4 GRID LIGHT

All conference rooms are 12' AFF






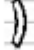



# BALCONY REFLECTED CEILING PLAN

SCALE: 1/16" = 1'0"



**KEY:**

-  SEMI-FLUSH
-  2x2 GRID LIGHT
-  DOWN LIGHT
-  PENDANT
-  CHANDELIER
-  PENDANT
-  2x4 GRID LIGHT



# BUILDING SECTIONS

## N-S SECTION CUT

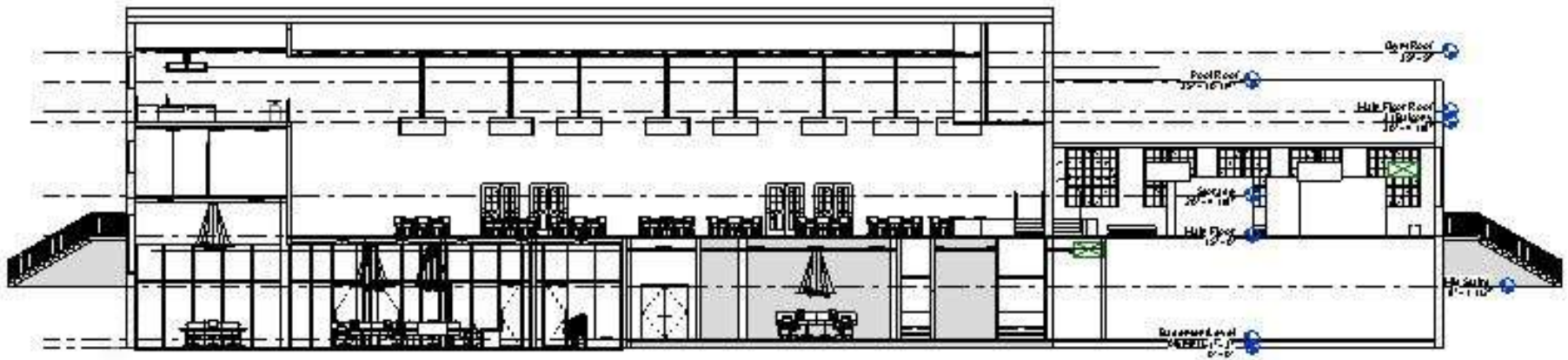
To Scale: 1/16"=1'-0"



# BUILDING SECTIONS

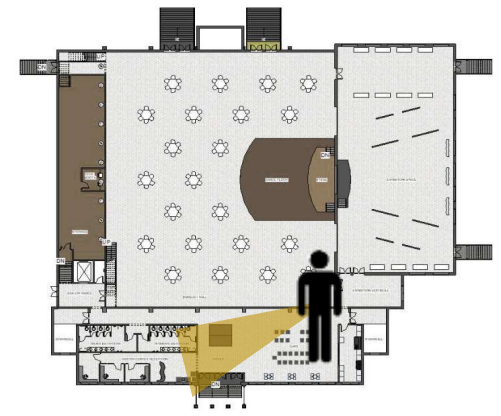
## E-W SECTION CUT

To Scale: 1/16"=1'-0"



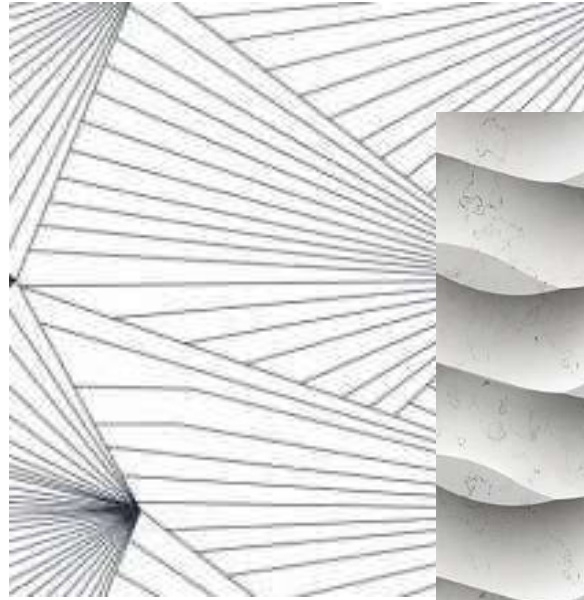


# LOBBY

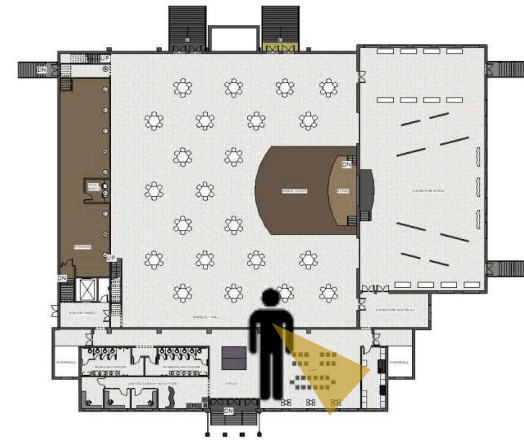




# LOBBY

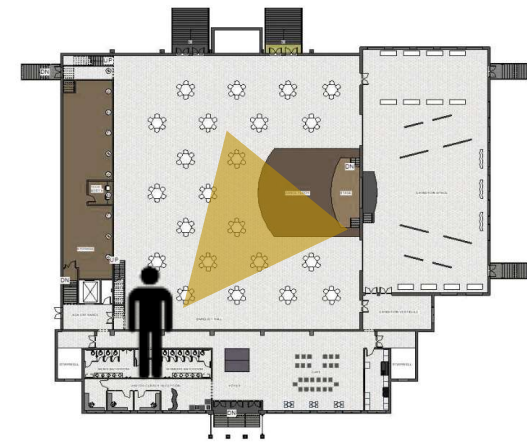


# CAFÉ AREA





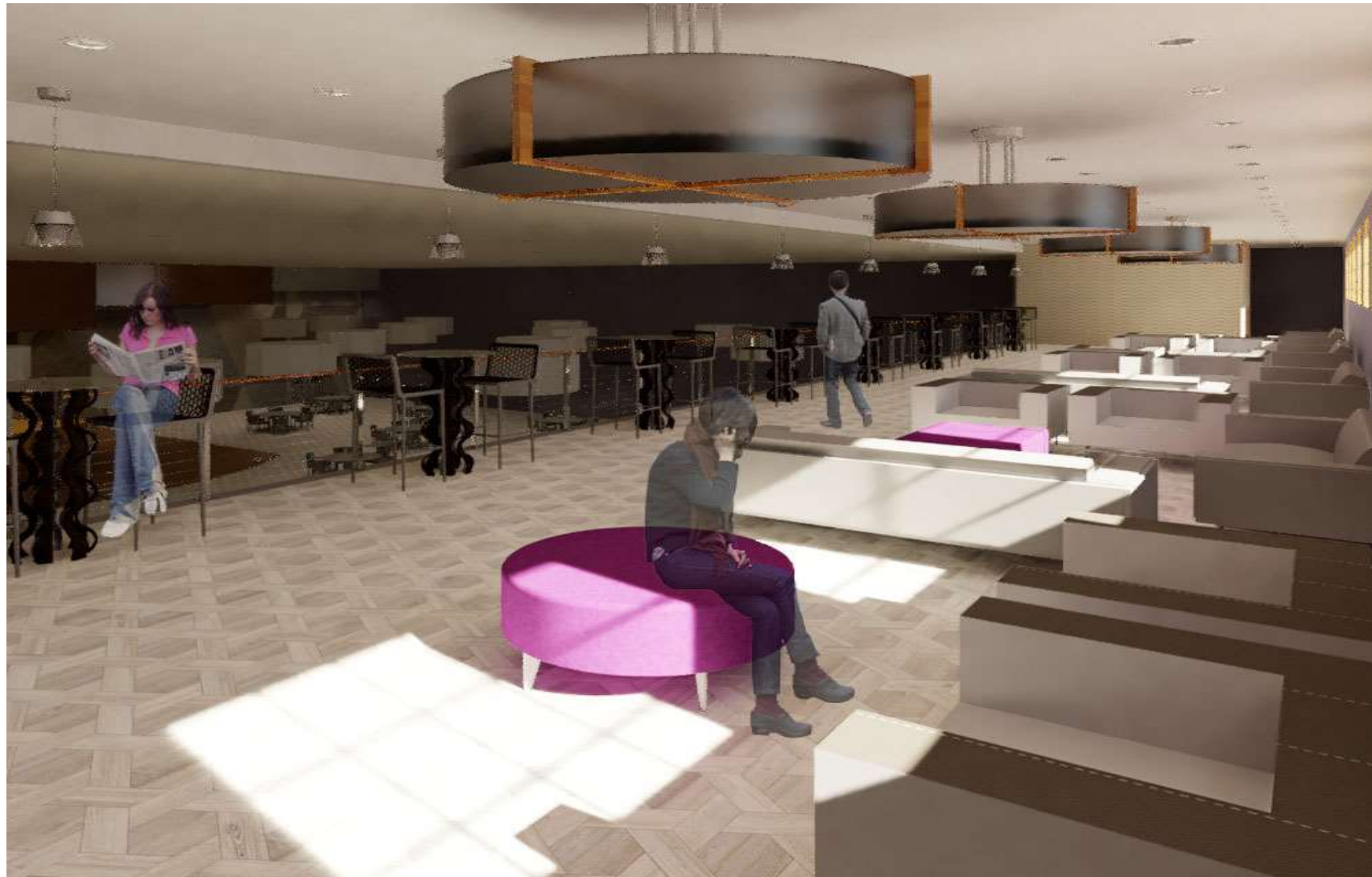
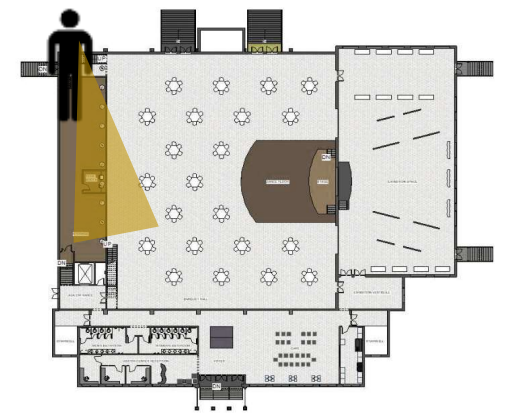
# BANQUET HALL



# BANQUET HALL



# BALCONY AREA

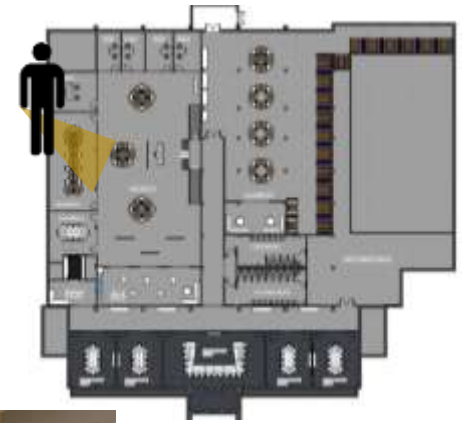




# BALCONY



# ALUMNI CENTER

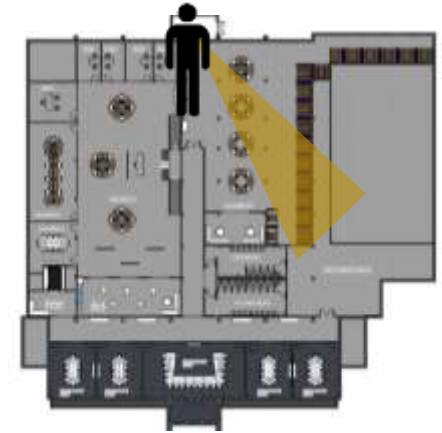


# ALUMNI CENTER





# STUDENT LOUNGE

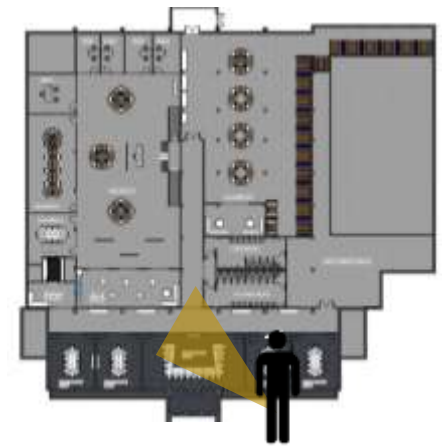


# STUDENT LOUNGE





# CONFERENCE ROOM



# CONFERENCE ROOM



# ARCHITECTURAL FINISHES



**CLEAN AND MODERN FINISHES ALLOW FOR A  
MODERN FEEL THROUGHOUT THE HISTORIC  
DEPTH OF THE BUILDING**