

STEM DESIGNS:

PORTFOLIO #3

CHRISTENBURY

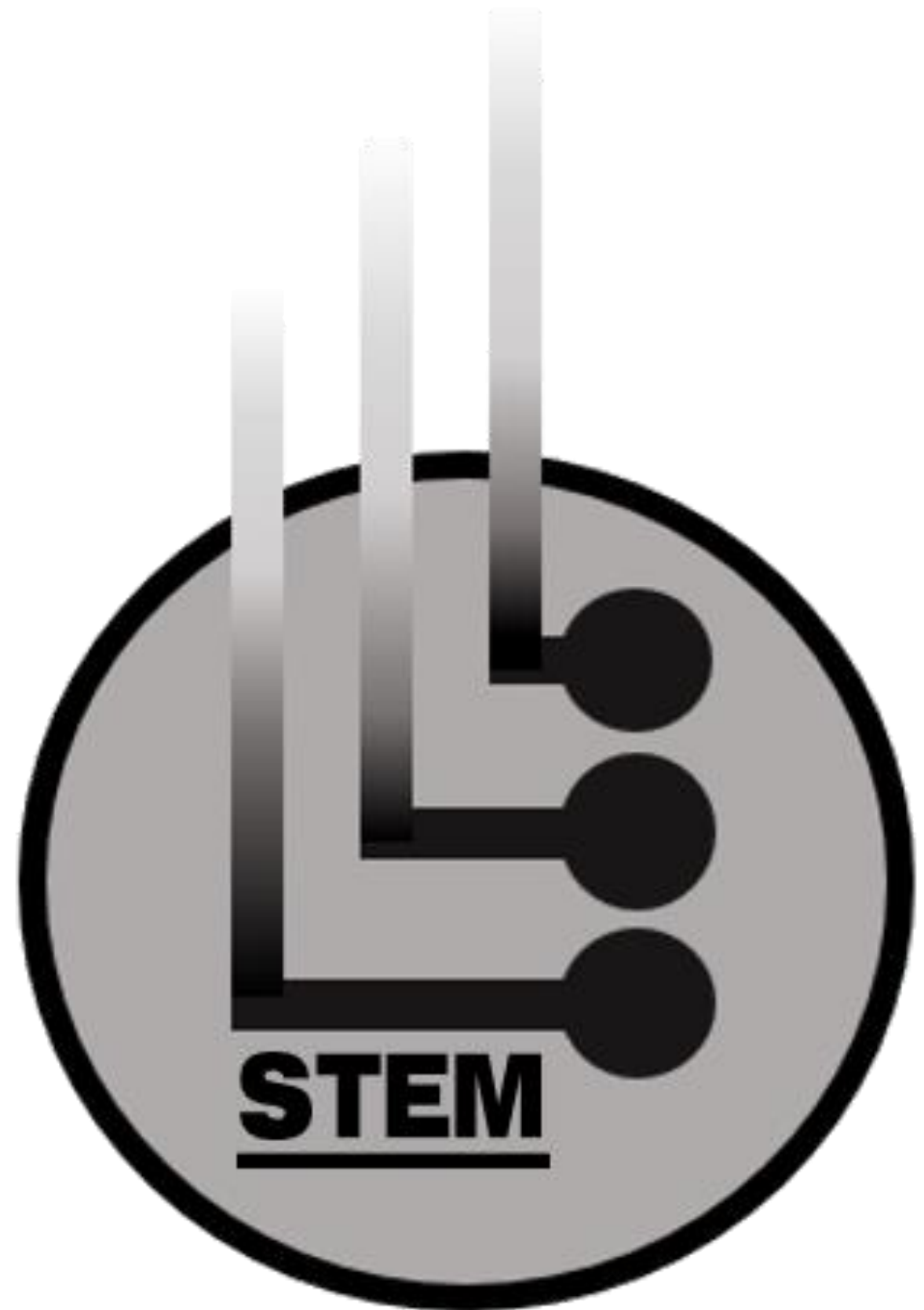
MEMORIAL

GYMNASIUM

RENOVATION

TEAM:

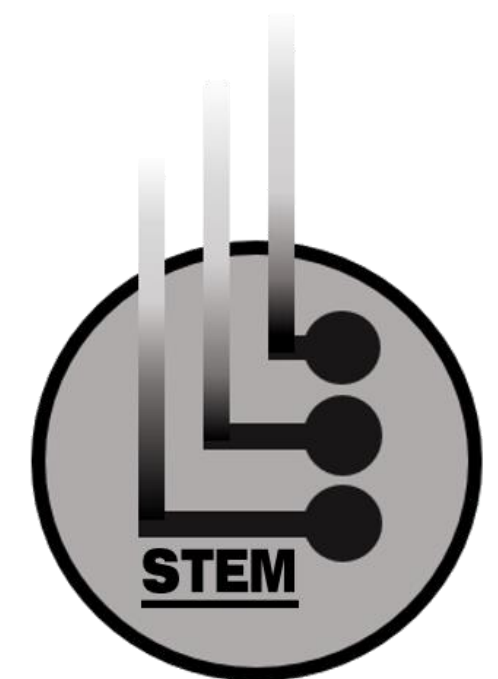
- **Madelyn Wood**
- **Savannah Johnson**
- **Jacqueline Rossi**



PRELIMINARY BUDGET LINE ITEMS:

Space	Usable Square Footage	Construction Budget	Furniture & Equipment Budge	Totals
<i>Lower Floor</i>	20021	6006300	1001050	7007350
<i>Upper Floor</i>	19924	5977200	996200	6973400
<i>Track</i>	4040	1212000	202000	1414000
TOTAL	43985	13195500	2199250	15394750
<i>STRUCTURAL STEEL</i>		<i>1000 TONS*\$3800/TON</i>		<i>3800000</i>
GRAND TOTAL				19194750

PROJECT TOTAL DOES NOT INCLUDE DEMOLITION COST AT BLEACHER AREA, NOR EXTERIOR SITE WORK.



CHALLENGE RESOLUTION

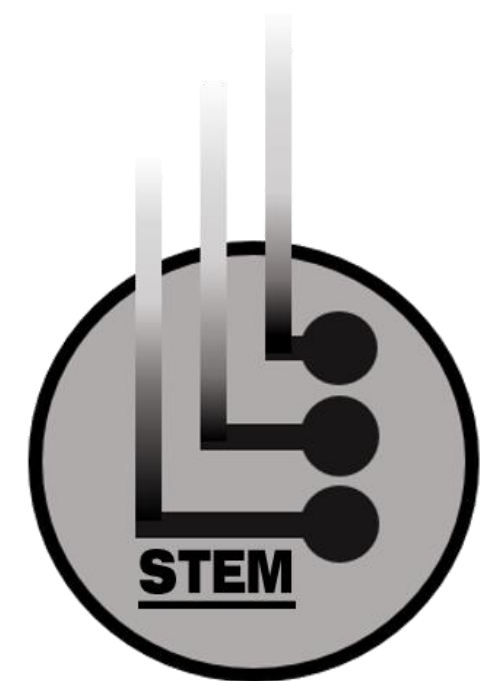
STATEMENT:

CHALLENGES

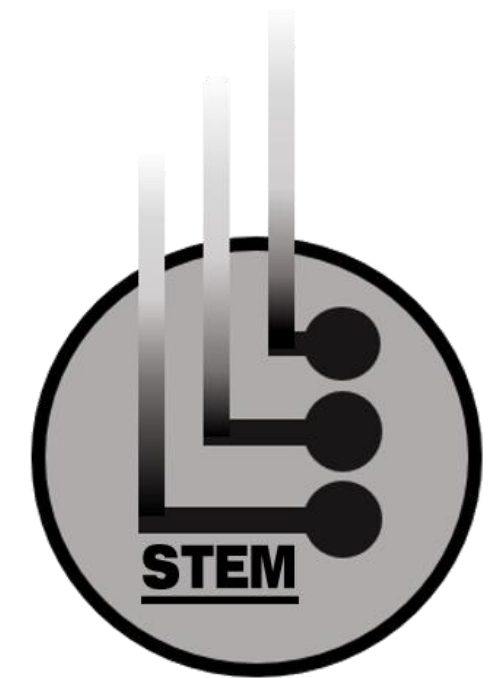
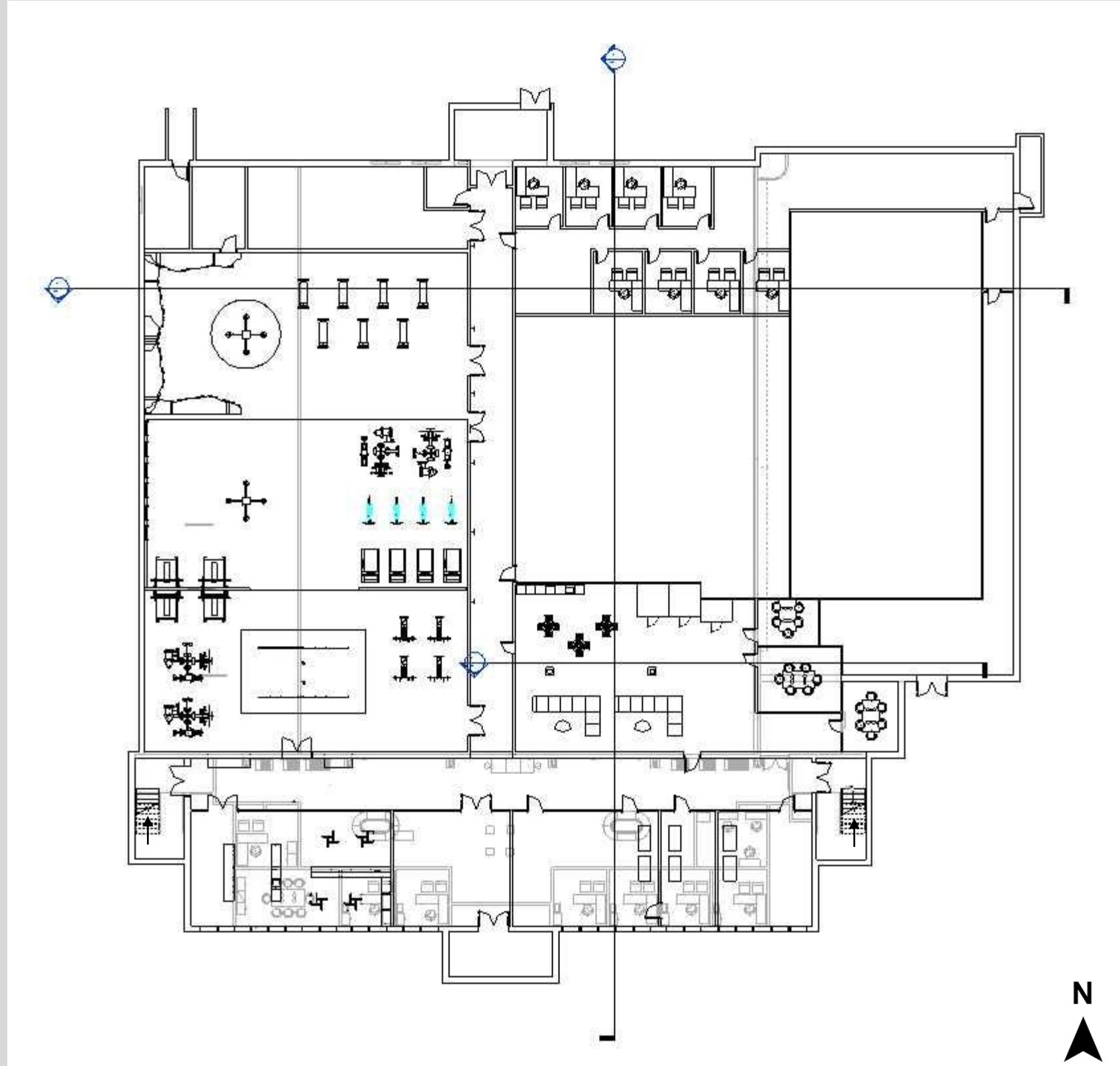
- The building was not ADA accessible
- The floor plan did not serve the current needs of the building
- There were different floor heights on the first floor
- There was only one entrance into the pool
- Adding a track to the second floor takes a lot of space
- Removing bleachers can add too much heat gain from more exposed windows
- Some windows on the first floor were blocked and daylight was blocked from simulation rooms

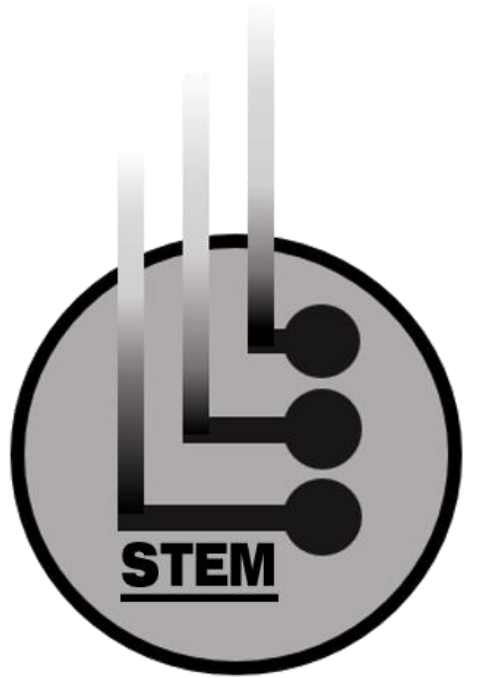
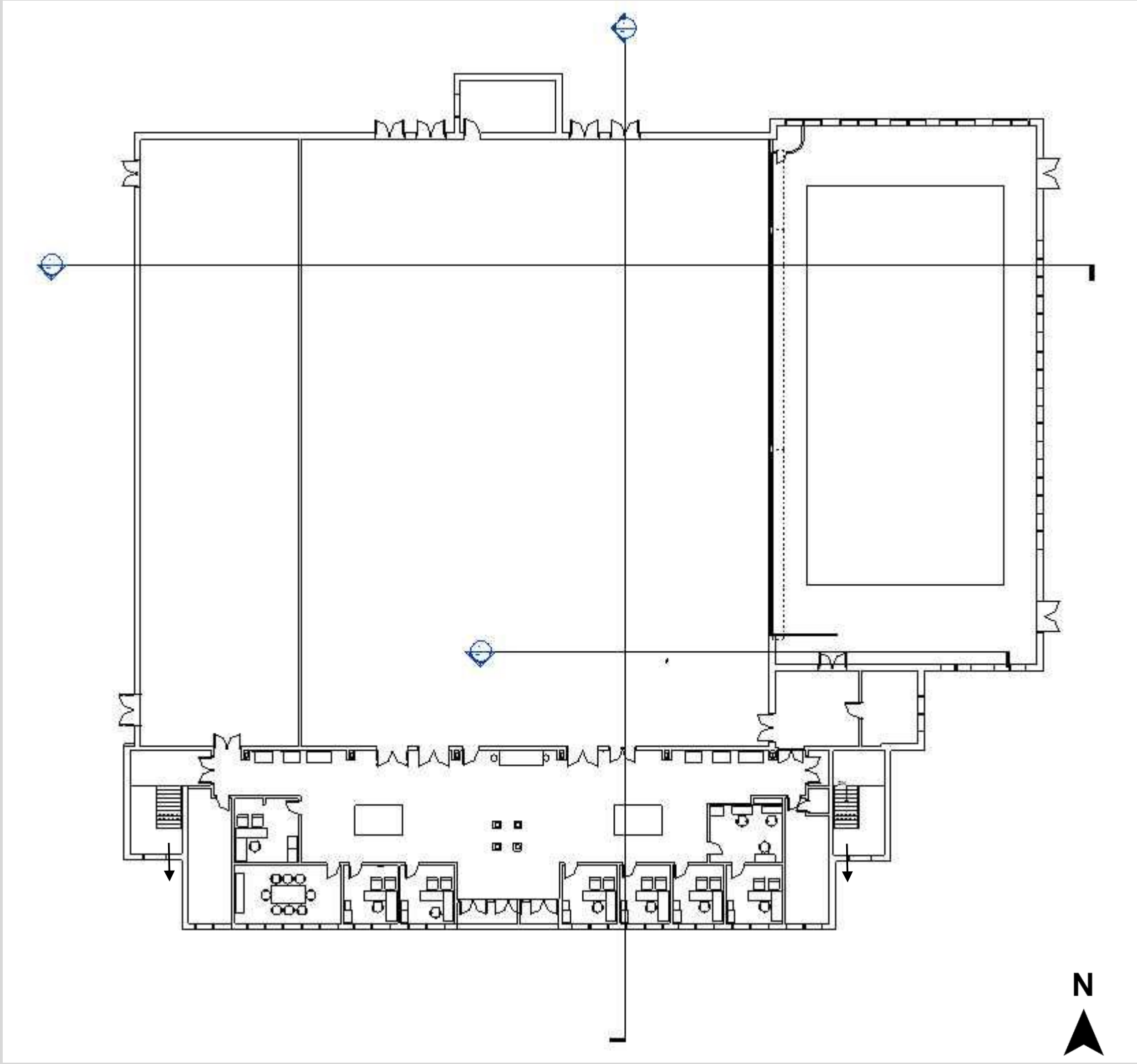
CHALLENGE RESOLUTIONS

- Added elevators, ramps, and increased door sizes to make building ADA accessible
- Reworked floor plan to accommodate all client preferences
- Fire-rated hallway floor level raised to match height of other hallway floors and create a clear, level circulation path
- Entrances to the pool were added through the locker rooms
- Track extends beyond gym into pool area, and bleachers were removed to add more space
- Provide rolladens for windows
- Simulation rooms were reworked to maximize daylight in other spaces

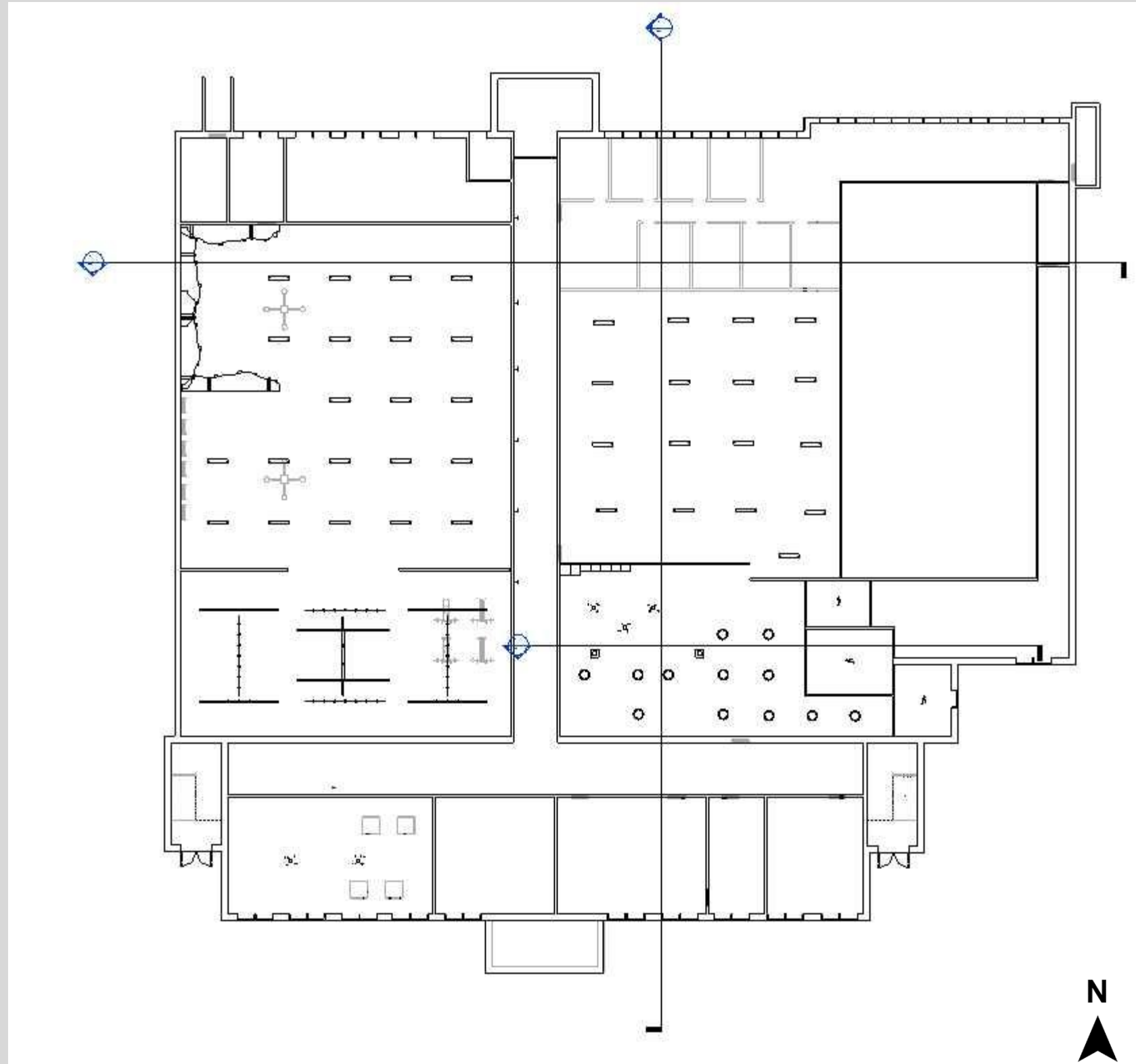


FURNITURE PLAN:




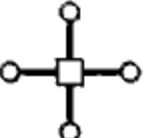


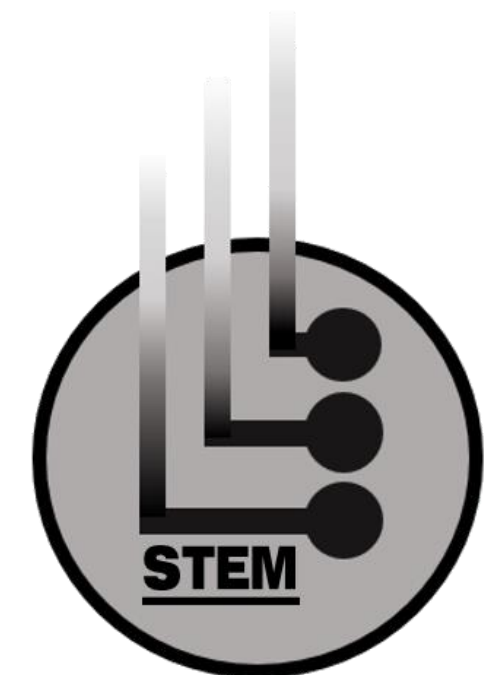


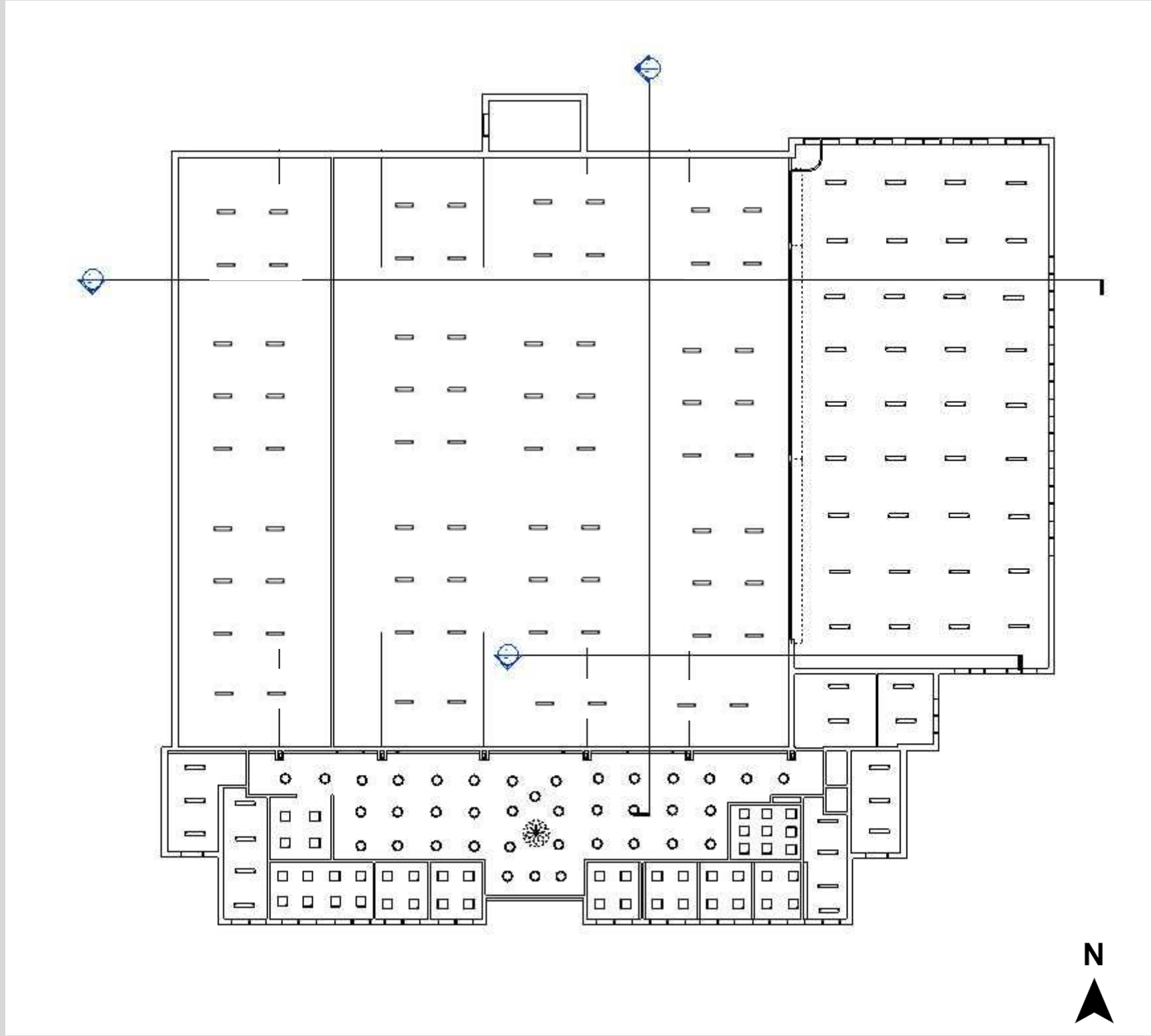
REFLECTED CEILING PLAN:







Lighting Legend

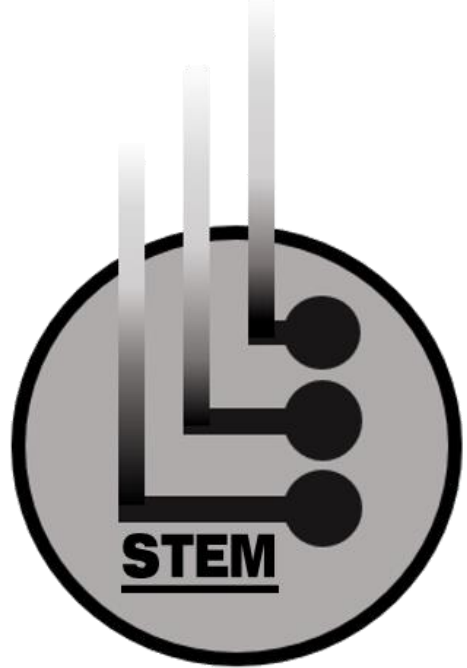
-  Ceiling Mounted Recessed Lighting
-  Ceiling Mounted Recessed Lighting
-  Suspended Direct Indirect Lighting
-  Ceiling Mounted Recessed Lighting



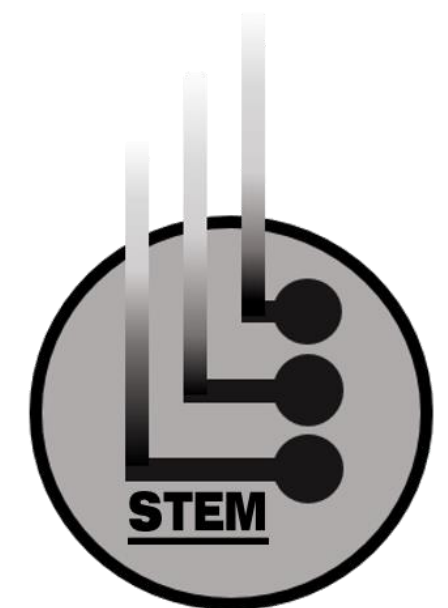
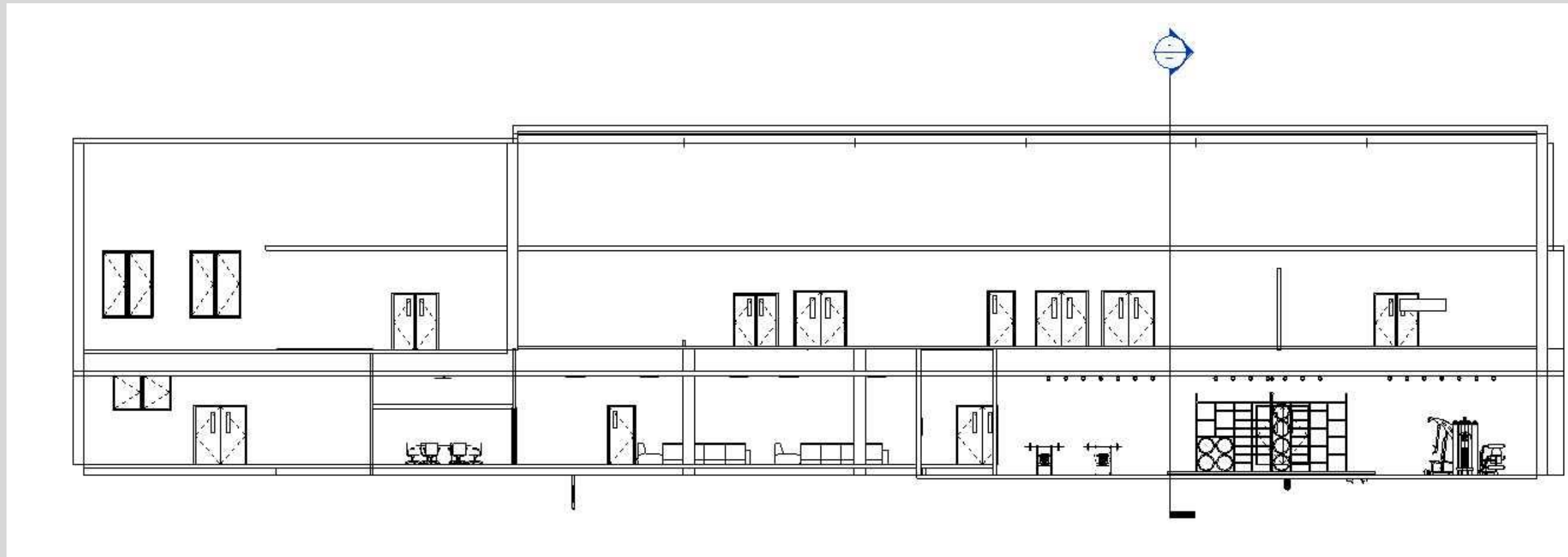


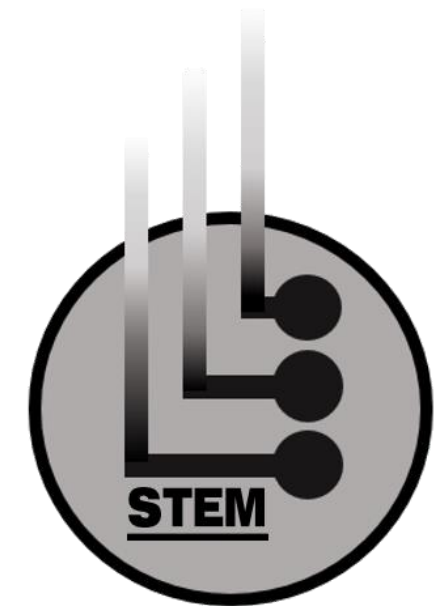
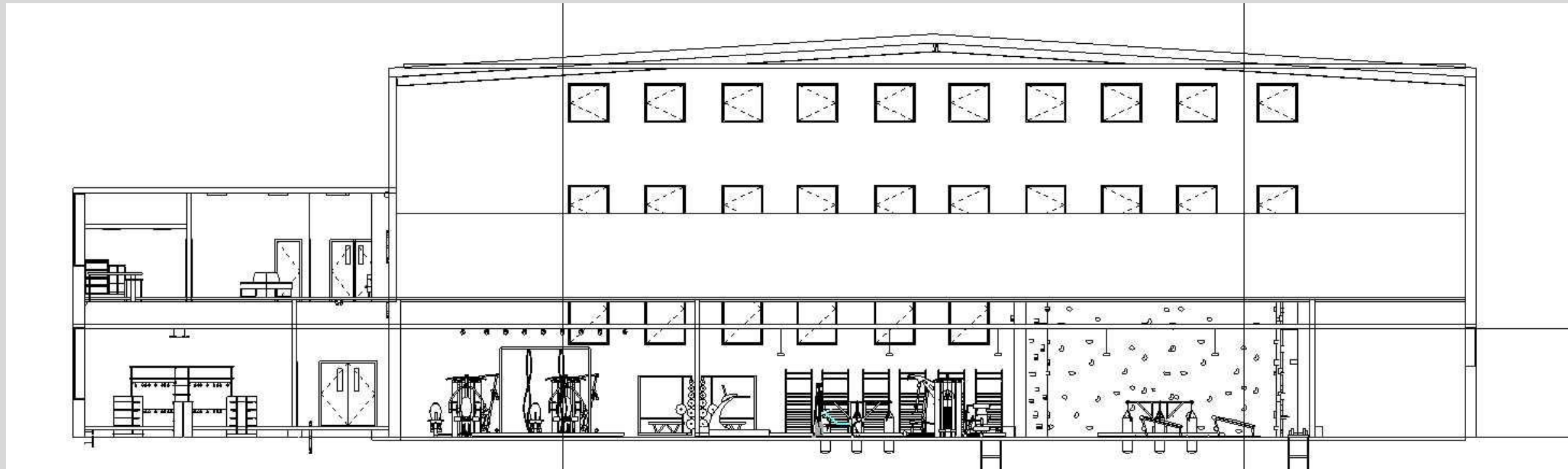
Lighting Legend

-  Ceiling Mounted Recessed Lighting
-  Ceiling Mounted Indirect Direct Lighting
-  Pendant Lighting
-  Suspended Direct Indirect Lighting

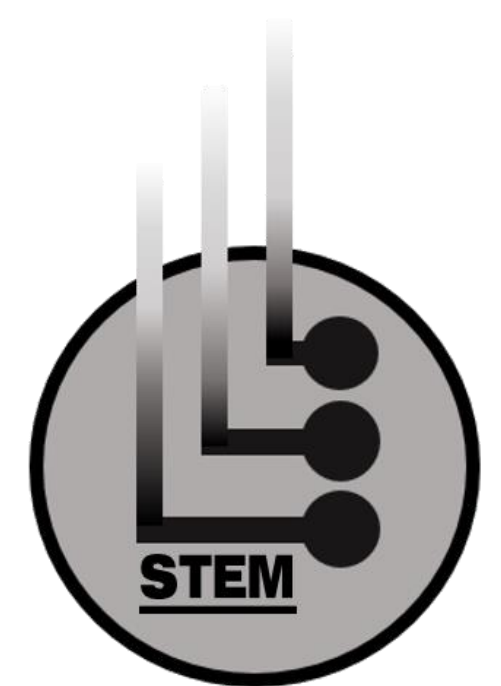


BUILDING SECTIONS:

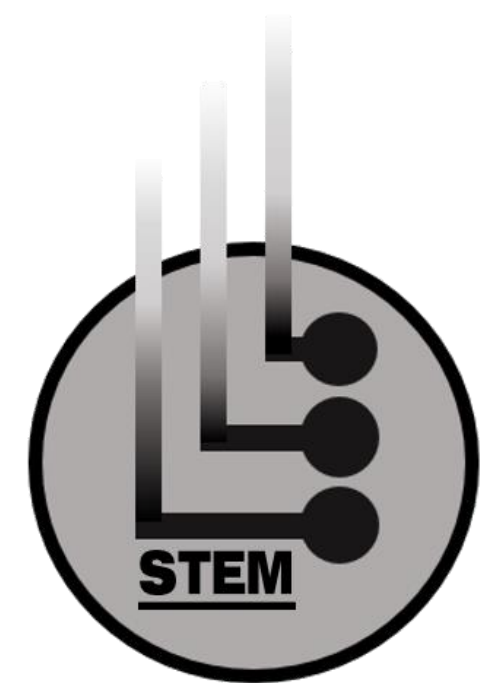




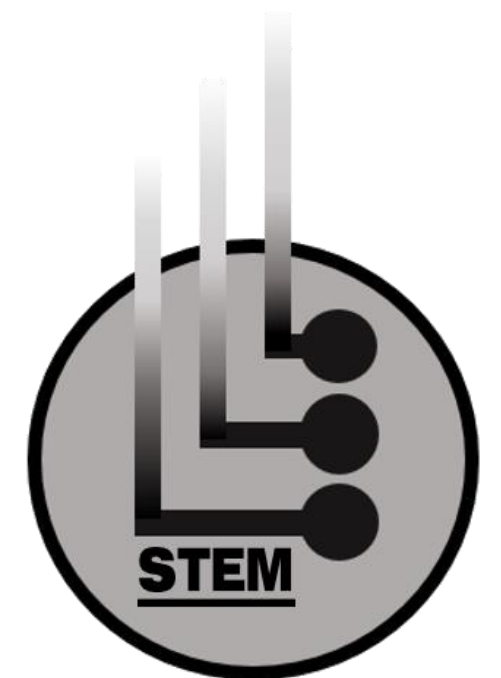
Renderings: Lobby



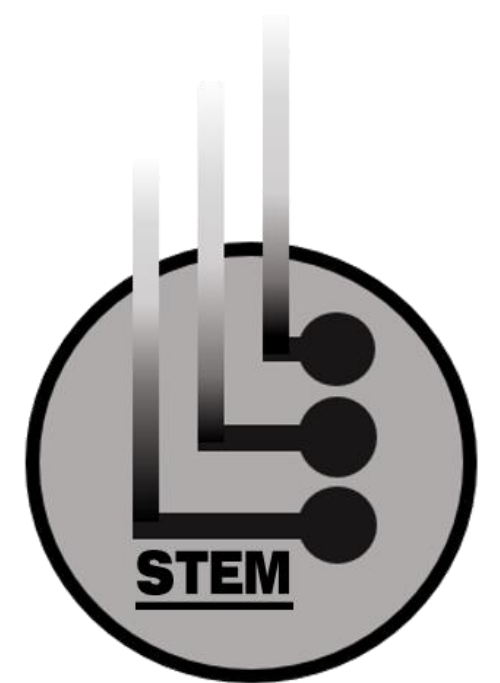
Renderings: Lobby



Renderings: Lounge



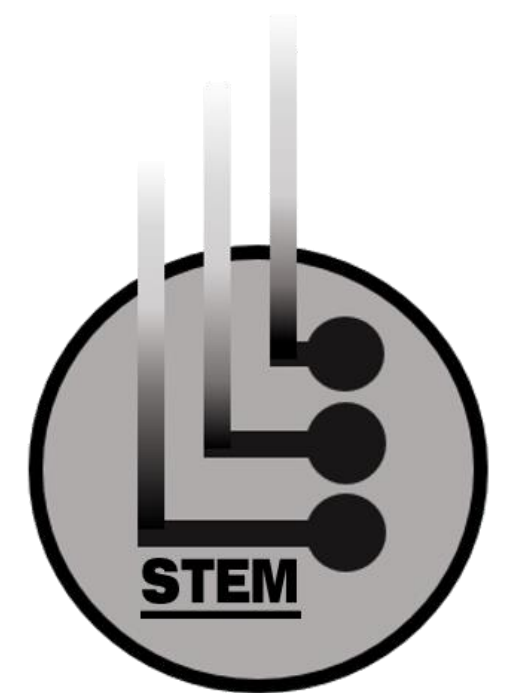
Renderings: Lounge



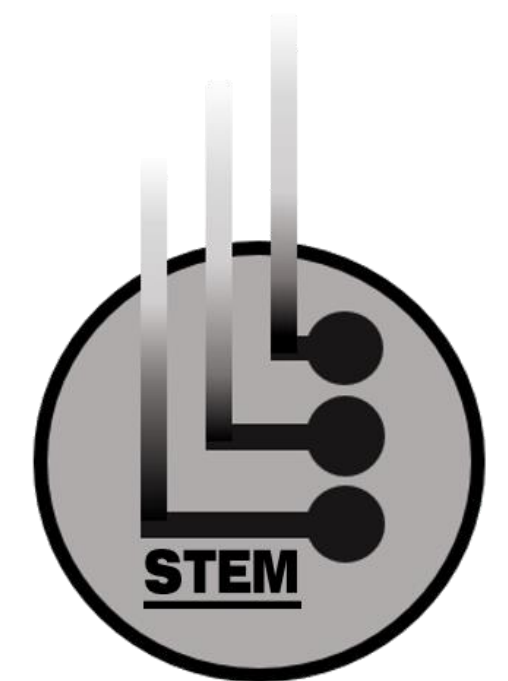
Renderings: TRX & Climbing Room



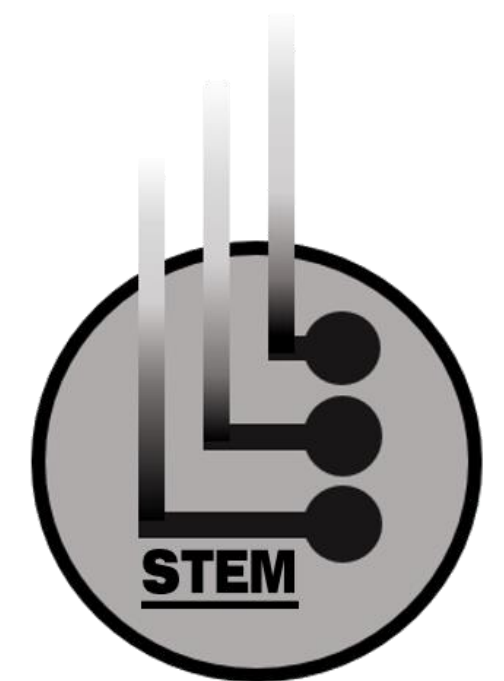
*NOT TO SCALE



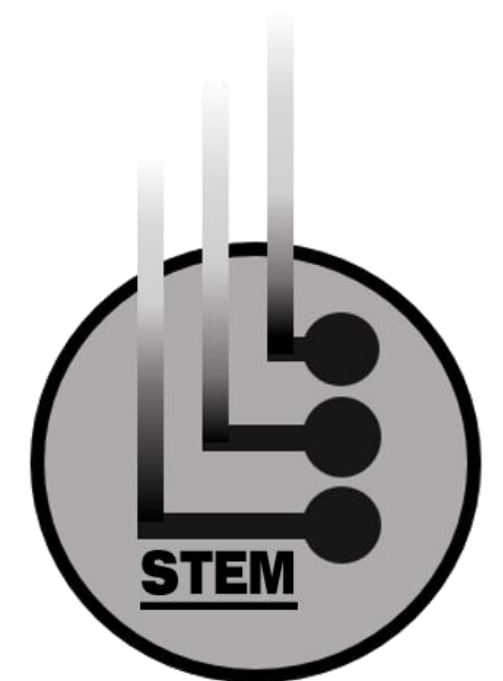
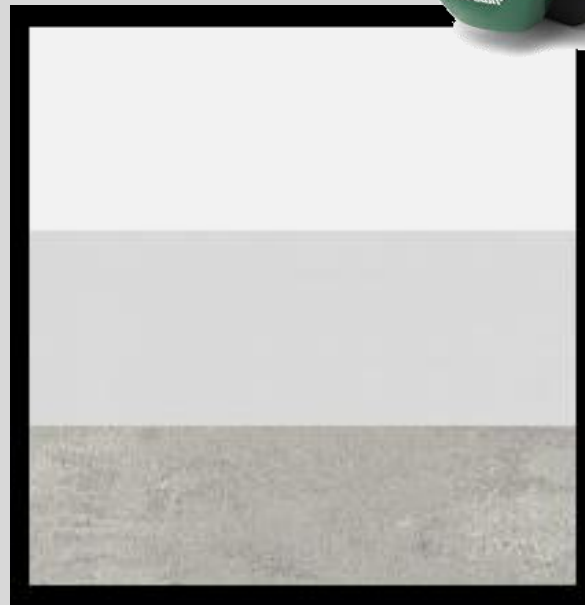
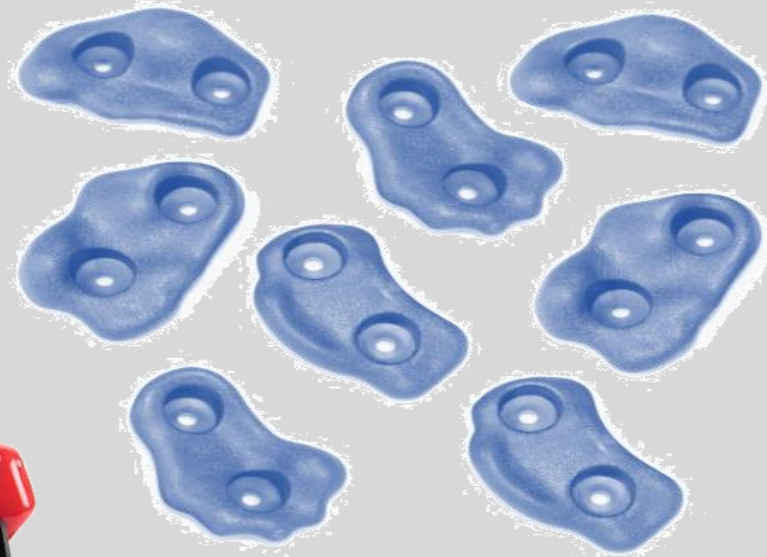
Renderings: Training Room



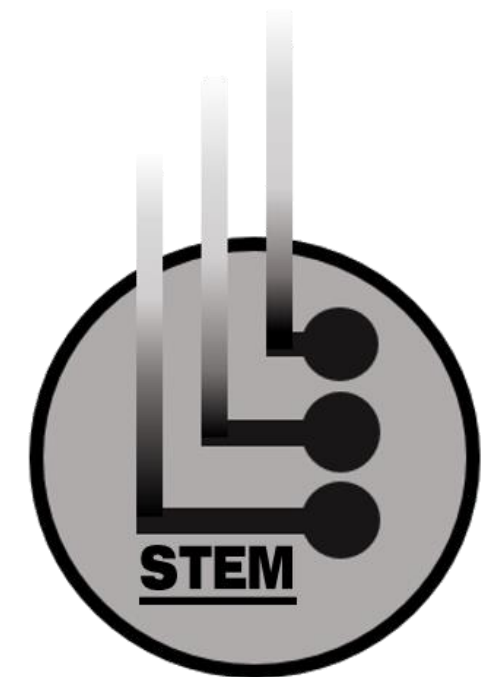
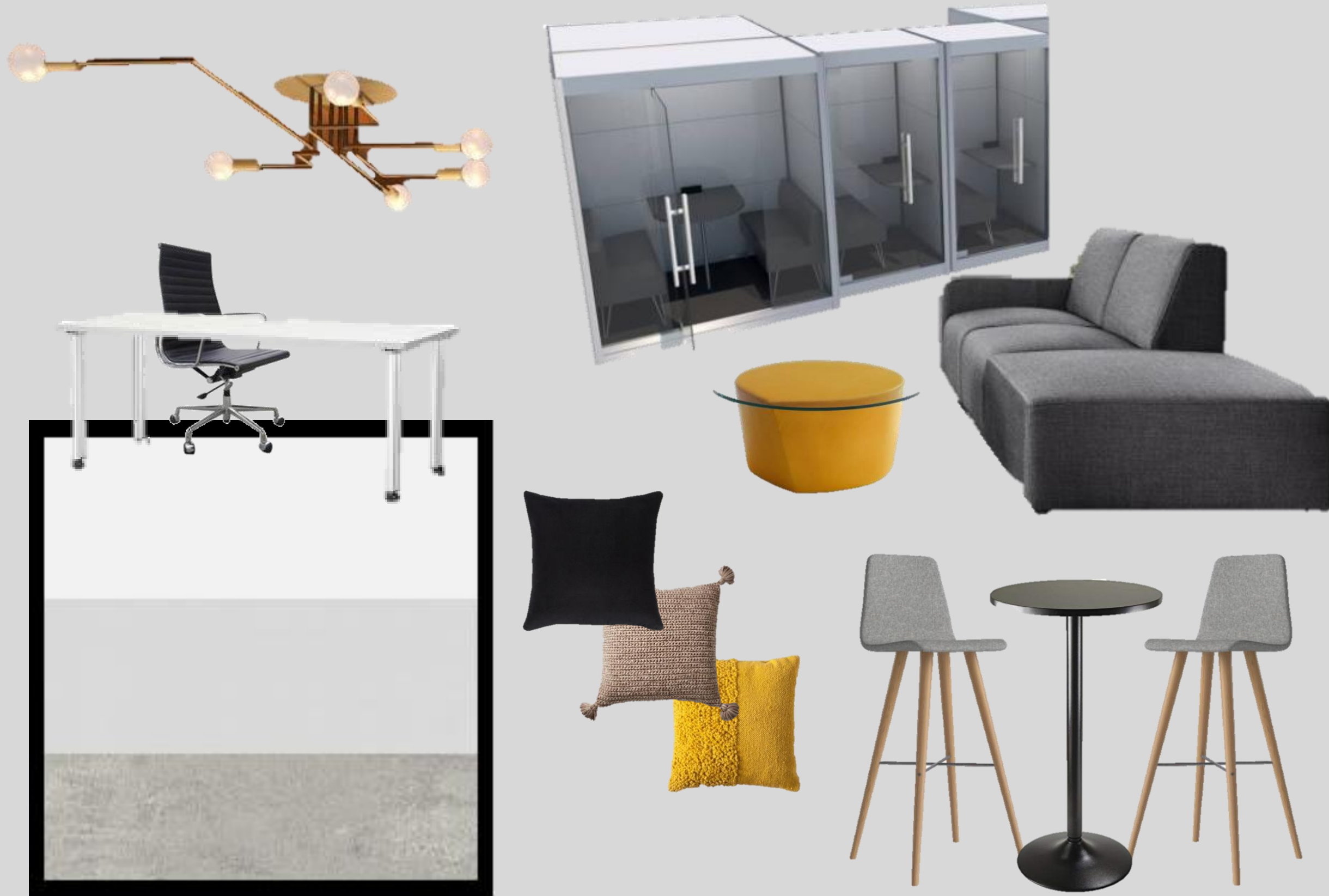
FURNITURE, FINISHES, & WINDOW TREATMENT:



FURNITURE, FINISHES, & WINDOW TREATMENT:



FURNITURE, FINISHES, & WINDOW TREATMENT:



FURNITURE, FINISHES, & WINDOW TREATMENT:

