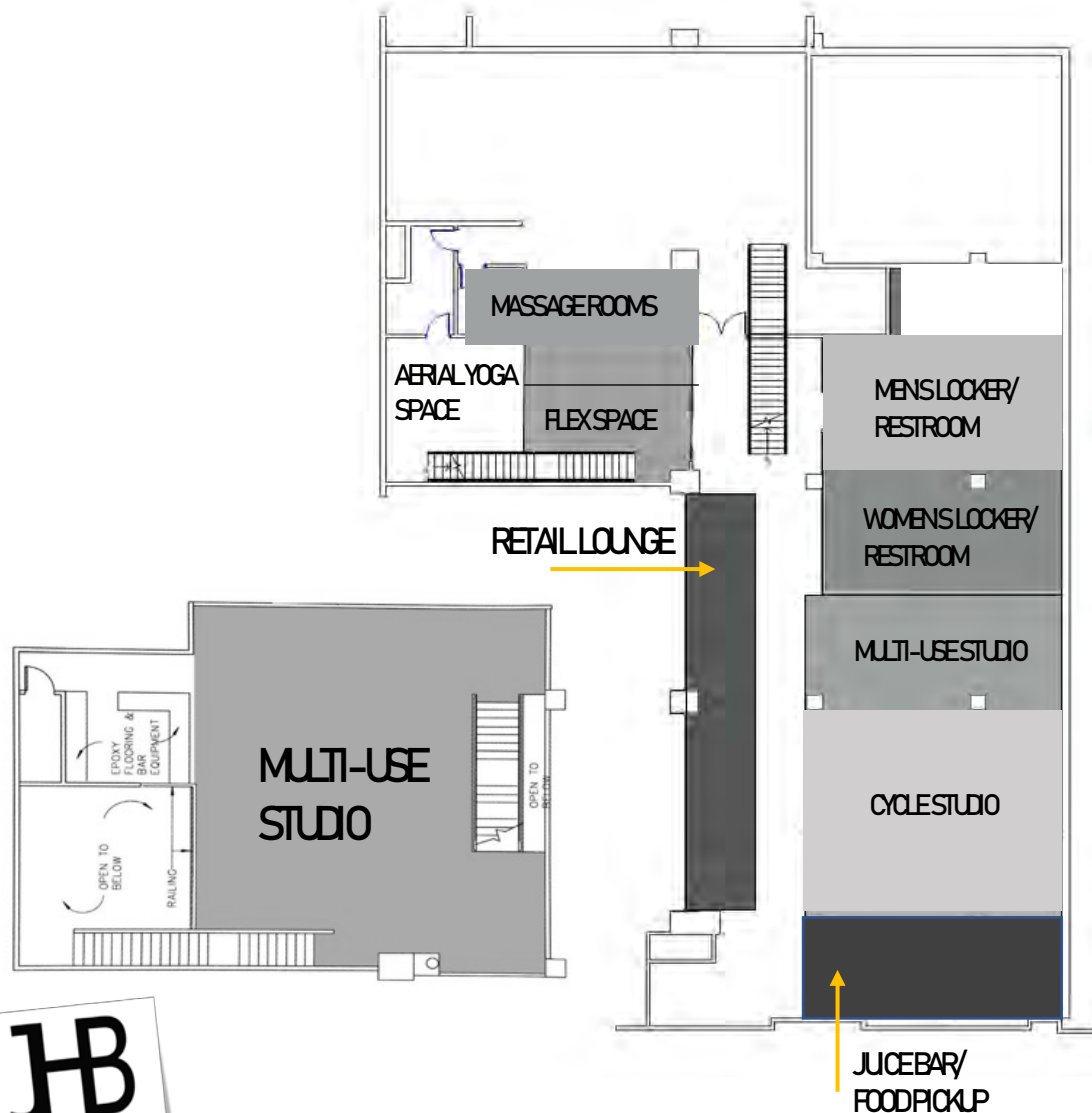


FAYETTEVILLE St.
FITNESS HALL

DESIGN CONCEPT



Raleigh having recently been listed as the No. 2 spot *globally* for quality of life, we at 4Design spent time researching what a “good” quality of life means to the residents of Raleigh. Often, the answer combined three main elements: stable finances, great friends & family, and good health.

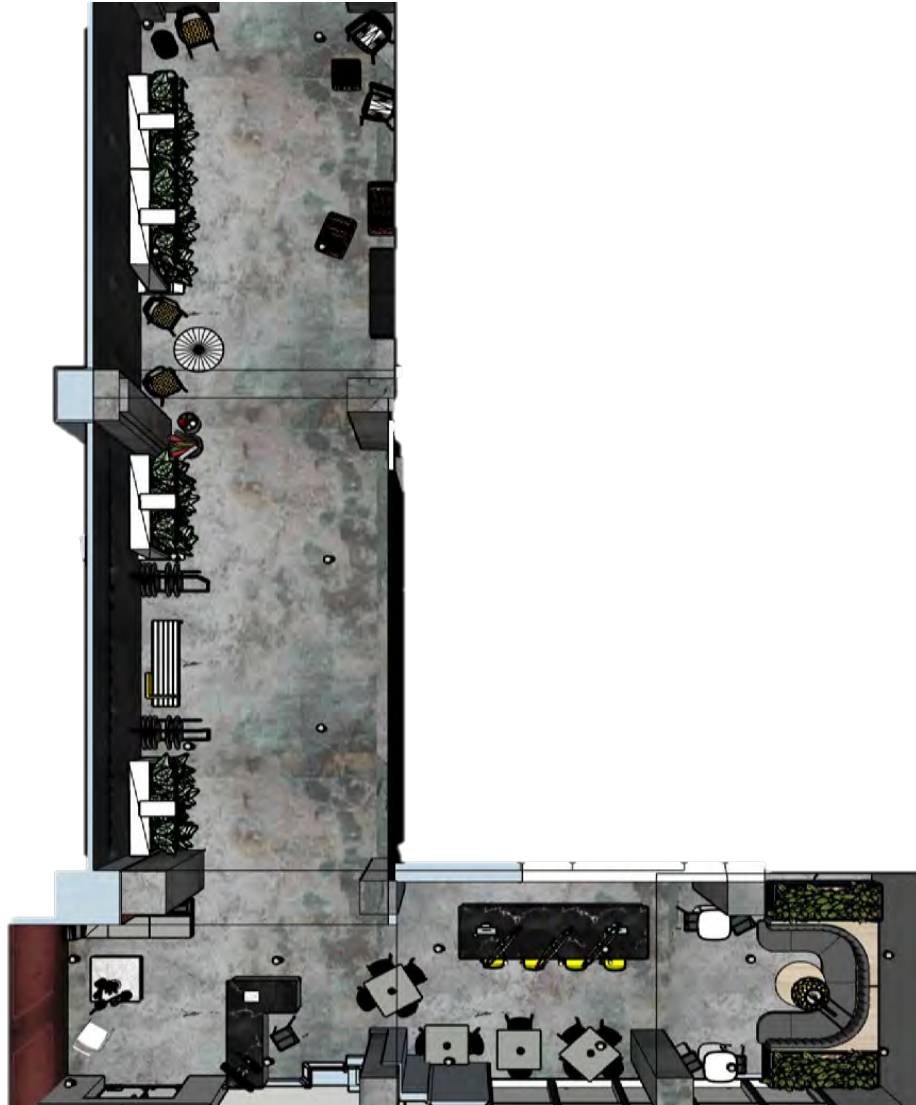
Diving deeper into the last component and understanding the culture of Raleigh, we learned exercise plays a big role in many of the resident’s lives. Wake county being ranked 2nd out of 100 in health with a median household income of 65,000, Raleigh is a fit, health conscious community that has the values and income to support a fitness business. Knowing how active the community is, 4Design was surprised to see no exercise studios located on Fayetteville St. other than the YMCA located a few blocks down. Although YMCA’s are great fitness centers, they lack the ability to provide specialized, group-oriented workouts with variety in which caters to a younger, more agile demographic, while still providing food and spa-like options as well. 4Design plans to introduce into the surrounding community a multi-versatile studio fitness design, known as the Fayetteville St. Fitness Hall that incorporates wellness features and food.

Consisting of more than just workout studios, Fayetteville St. Fitness Hall will house a full-menu similar to Clean Eatz, in which customers can pre-place a variety of meal orders from items made in-house and have the quantity they desire ready for pick-up at a time they requested. Along with a full-meal menu will be a smoothie & protein bar as well as a merchandise corner where members can buy workout gear seen in their classes along with exercise attire. The wellness center will focus on skincare, through facials, massages, and cosmetics. In the area, there is only one specialty exercise studio, The Row House on Mercantile Drive. Because of this, our team feels that this space is in the ideal location to be successful as a multi-studio space that caters to many different exercise needs, along with food and wellness.

SPACE SECTIONAL PERSPECTIVE



ENTRY/RETAIL/BAR FINISHES & PLAN



ENTRY PERSPECTIVE



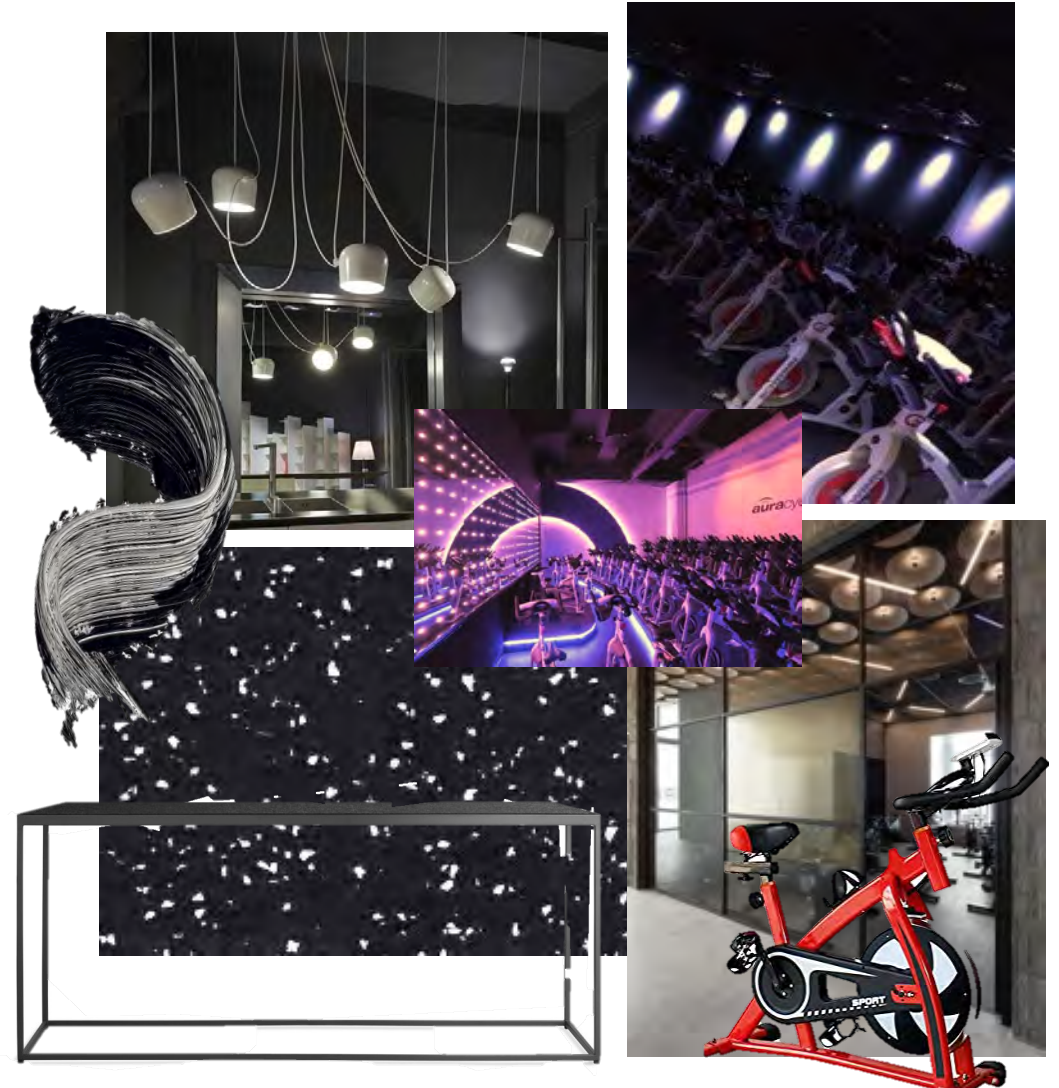
BAR PERSPECTIVE



RETAIL LOUNGE PERSPECTIVE



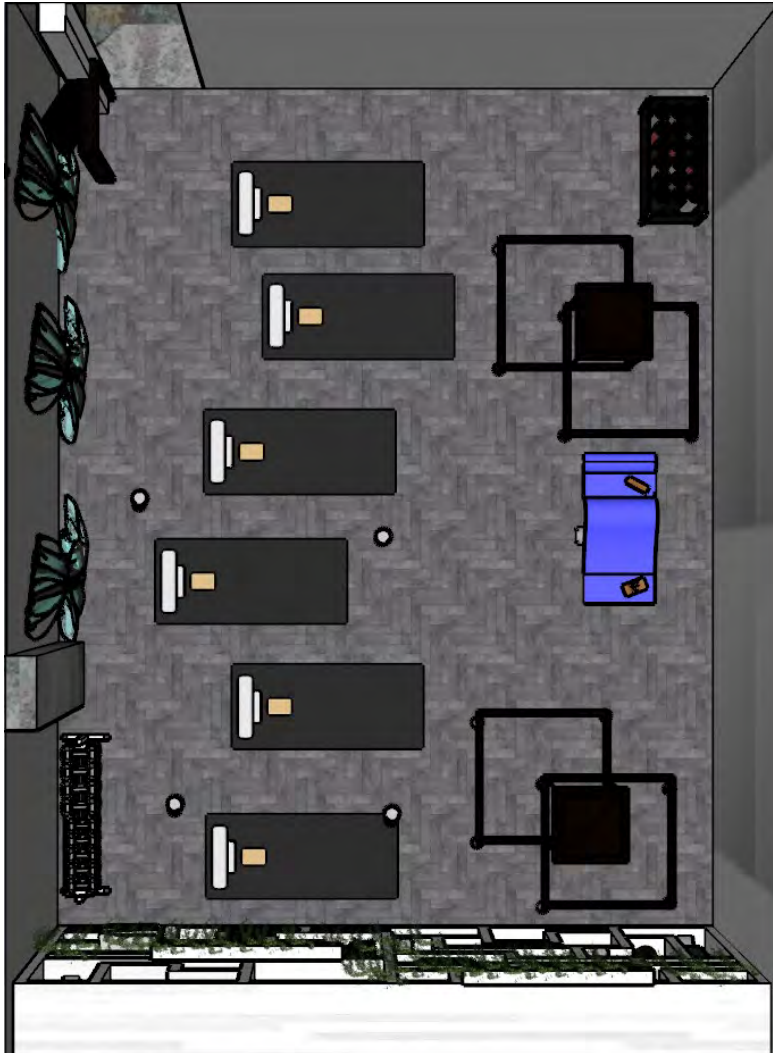
CYCLESTUDIO FINISHES & PLAN



CYCLESTUDIO PERSPECTIVES



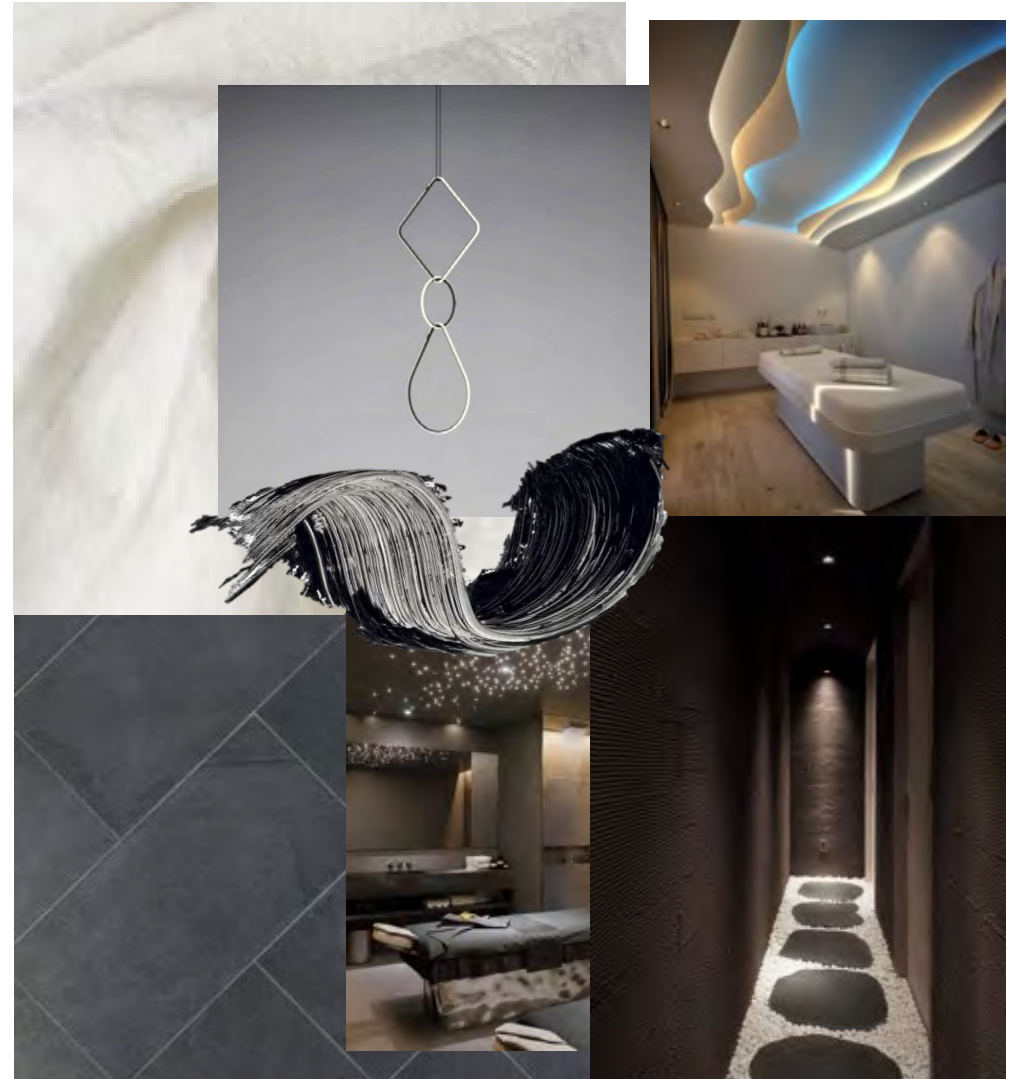
YOGA STUDIO FINISHES & PLAN



YOGA STUDIO PERSPECTIVE



WELLNESS ROOM FINISHES & PLAN



WELLNESS ROOM PERSPECTIVE



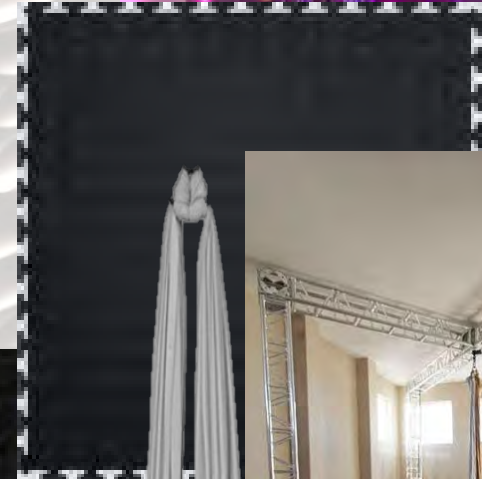
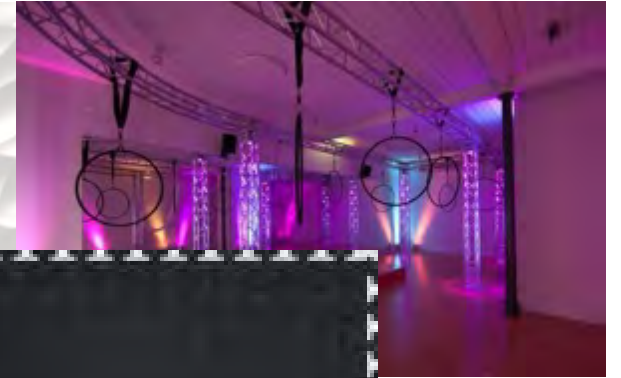
FLEX SPACE FINISHES & PLAN



FLEX SPACE PERSPECTIVE



AERIAL YOGA SPACE FINISHES & PLAN



AERIAL YOGA SPACE PERSPECTIVE

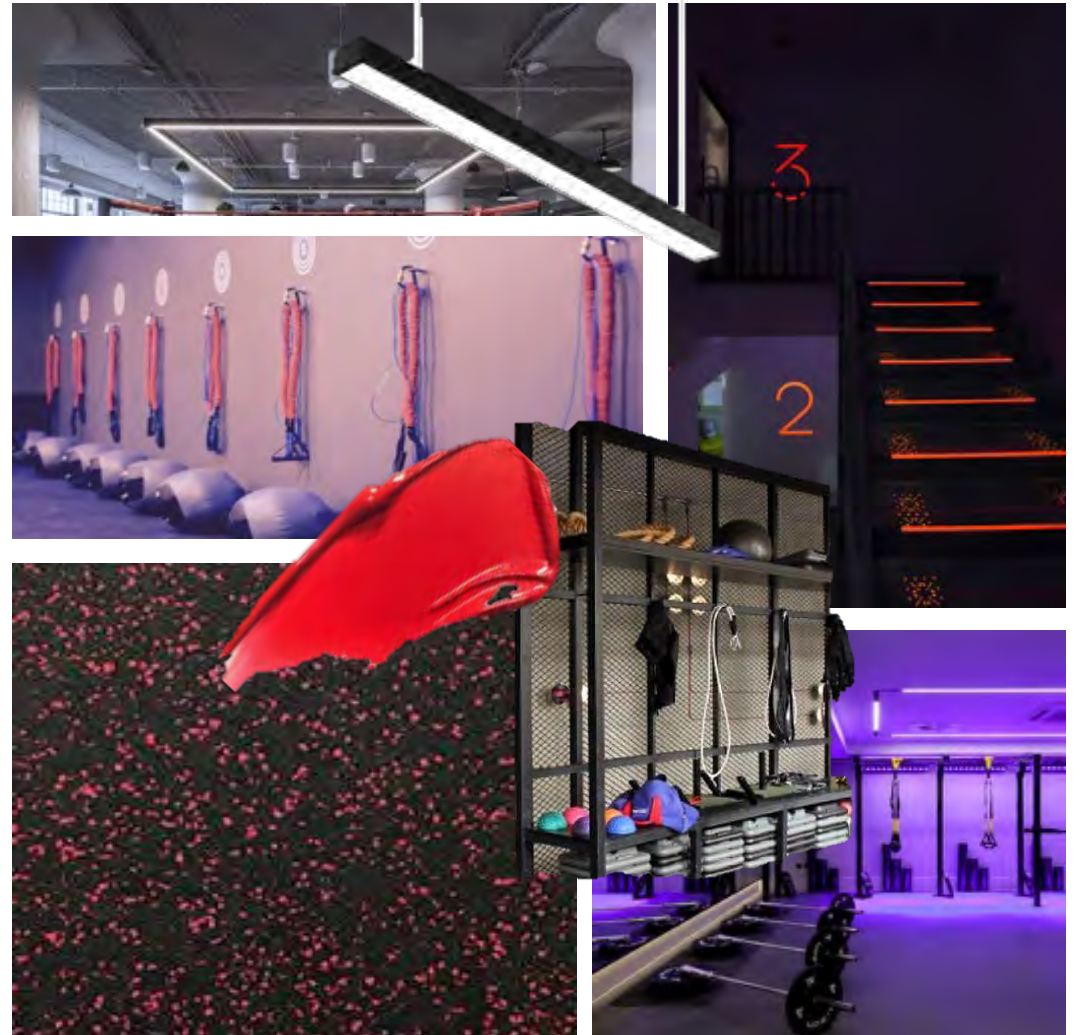
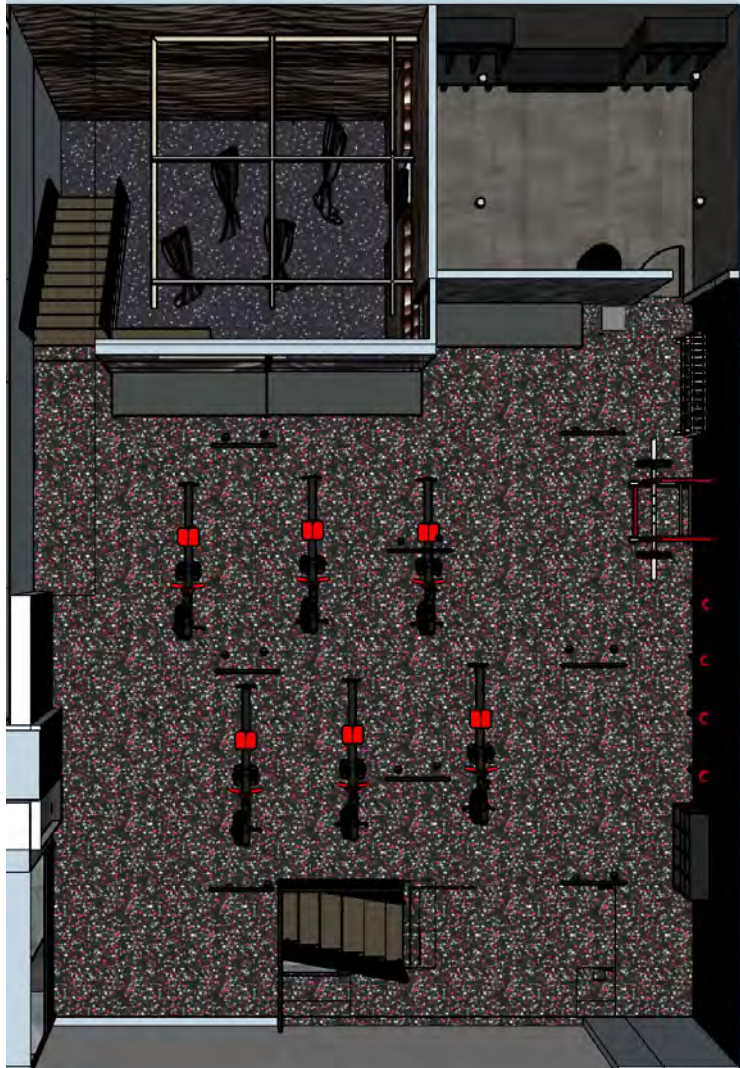


FLEX SPACE ENTRY

MEZZANNE LEVEL ENTRY



MEZZANNE LEVEL FINISHES & PLAN



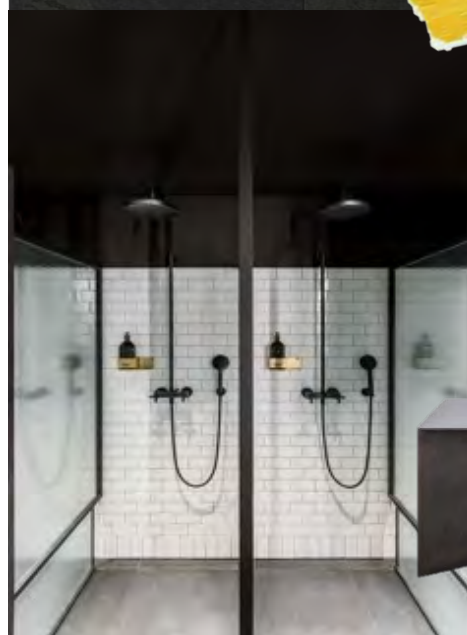
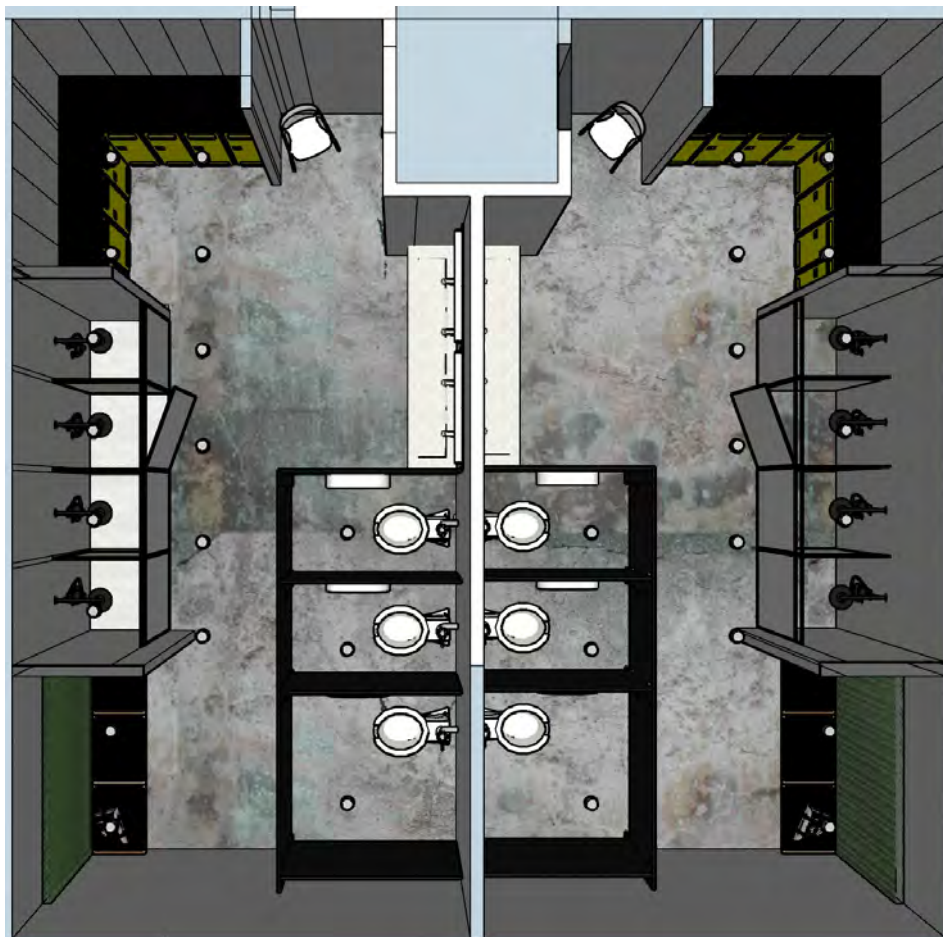
MEZZANNE LEVEL PERSPECTIVE

ADA RESTROOM/
CHANGING ROOM

STORAGE FOR
DIVIDER PANELS TO
SPLIT SPACE IN HALF,
STAIR ACCESS TO
SEPARATE HALVES



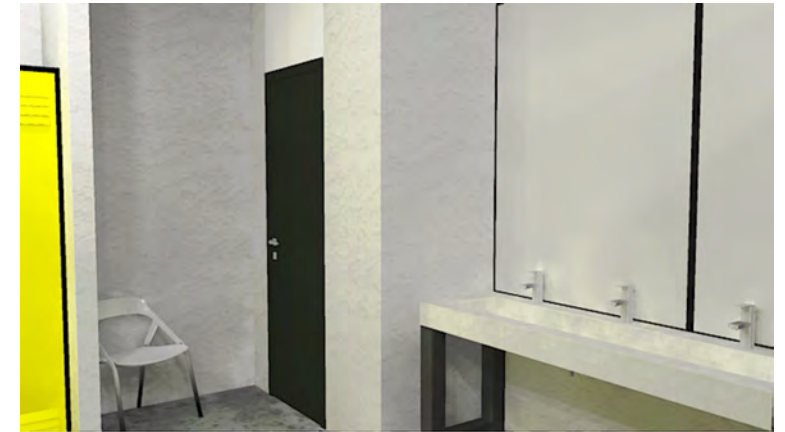
BATHROOM/LOCKER ROOM FINISHES & PLAN



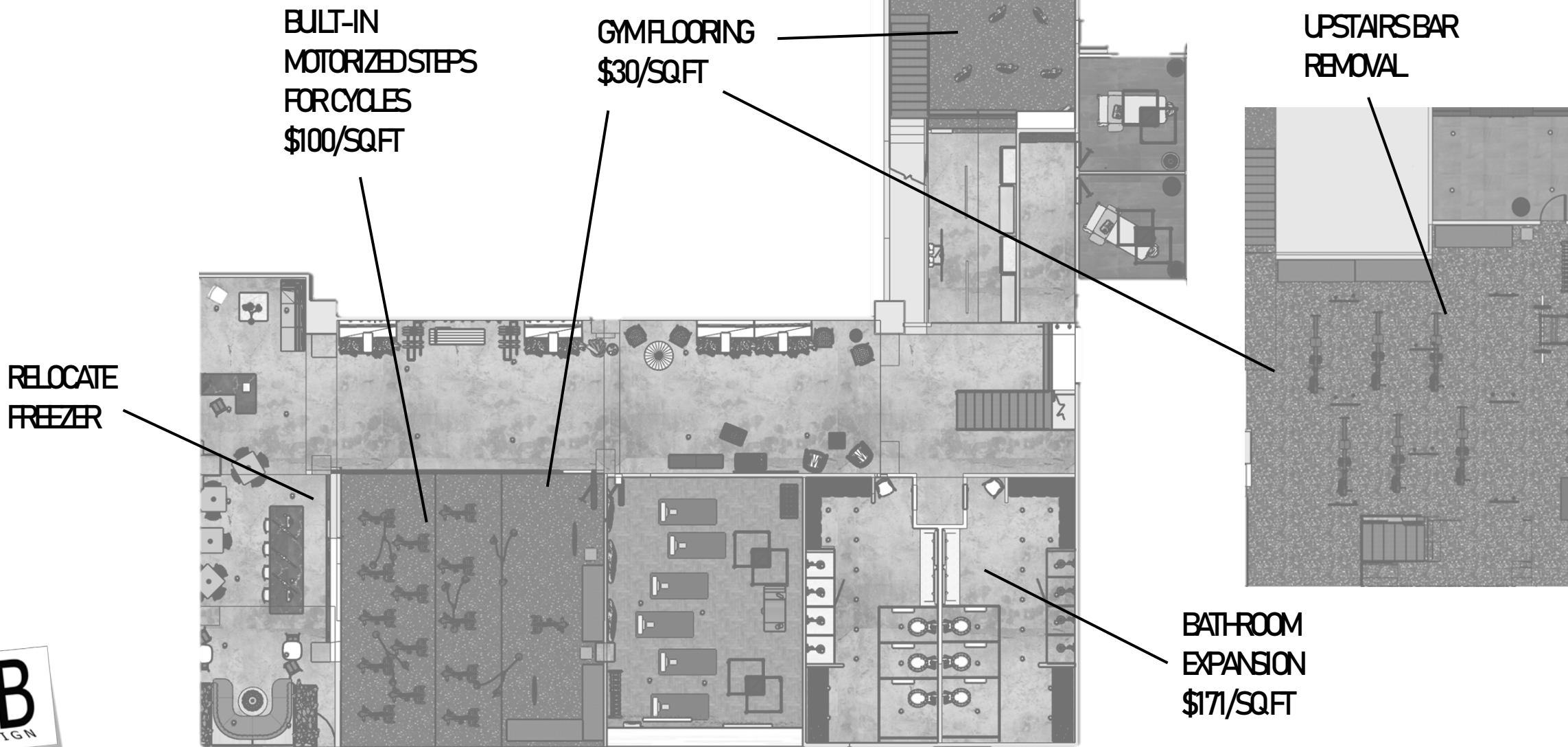
BATHROOM & LOCKER ROOM PERSPECTIVES






BATHROOM & LOCKER ROOM PERSPECTIVES



PRICING PLAN






SPECS: F,F,W

SECTION x: CYCLE & YOGA STUDIO/ RETAIL LOUNGE SEATING		
X.X BENCH		
EMU	BLUT DOT	BLU DOT
		
<p>B</p> <p>Item Name: EMU Pattern Bench Item No.: CO2512 Description: Structural lightness. The EMU Pattern Series plays with a structure of transparency and lightness. When immersed in the landscape, the perforated metal dissolves into dappled outlines — bringing modern technology into harmony with natural beauty</p> <p>Weight: N/A Dimensions: 14" H x 23" W x 17" D</p> <p>Options: Multiple Color Options</p> <p>Environmental Certifications: BIFMA - No, European Standards EN 581-2, European Standards EN 581-3</p> <p>Recycled or Recyclable</p>	<p>Item Name: Amicable Split Bench Item No.: BD1AM1BNCHWD Description: Two angled solid wood planes are unified by brass brackets to create an unexpectedly comfortable seat. The uncomplicated form is suitable for any use in any room (entry way, dining room, bedroom) or a contract settings.</p> <p>Weight: Dimensions: 16" H x 60" W x 15" D</p> <p>Options: White Oak, Smoke, Walnut</p> <p>Environmental Certifications: None</p> <p>Recycled or Recyclable</p>	<p>Item Name: Construct Bench Item No.: BD1CN142BN Description: A thin powder-coated steel base creates a minimalist geometric form. Designed to be used as bench seating or a coffee table, Construct from Blu Dot features an inset felt top, available in multiple colors, for added warmth. Leveling feet provide added stability.</p> <p>Weight: n/a Dimensions: 18" H x 14" D x 42" or 72" W</p> <p>Options: Oblivion / Heathered Off White Oblivion / Heathered Graphite</p> <p>Environmental Certifications: None</p> <p>Recycled or Recyclable</p>
\$948 Price	\$699 Price	\$499 Price

Page 1

Page 3

X.X LOUNGE SEATING		
		
<p>C</p> <p>Item Name: EMU Lyze Arm Chair; 4 pack Item No.: COEM5616 Description: Modern mesh. Technical and timeless, the EMU Lyze Series revisits an iconic wire construction. Unusual stainless steel backrests are attached to aluminum seats and come in sophisticated color combinations.</p> <p>Weight: n/a Dimensions: 31.25" H x 24.5" W x 22.5" D Options: Red, Black, Gold</p> <p>Environmental Certifications: BIFMA - No, European Standards EN 581-2, European Standards EN 581-3</p> <p>Recycled or Recyclable</p>	<p>Item Name: Deep Thoughts Leather Lounge Item No.: BD1DS1LNGCHR Description: Leather wrapped contours form a relaxing position that equally invites introspection and socialization. The contrasting lumbar pillow slides to be where you want it and blackened steel base provides all the support needed to start your journey of taking a damn load off.</p> <p>Weight: n/a Dimensions: 36" H x 26" W x 24" D Options: Camel Leather, Ink Leather, Loden Green Leather</p> <p>Environmental Certifications: BIFMA - No</p> <p>Recycled or Recyclable</p>	<p>Item Name: HUG Dining Chair Item No.: AB0210601 Description: Hertel & Klarhoefer have created a modern yet classic shell chair. The sitting comfort is excellent, and a lot of attention has been paid to the details, in particular the legs which are visible on the outside of the shell, bringing the design together in a surprising and original way. The chair is available in multiple combination options - both the legs and the shell are supplied in several variants.</p> <p>Weight: Dimensions: 33.07" H x 22.05" W x 19.29"</p> <p>Options:</p> <p>Environmental Certifications:</p> <p>Recycled or Recyclable</p>
\$3074 Price	\$1,799.00	\$448 Price




Page 2

Page 4

SECTION x: BATHROOM/LOCKER ROOMS

X.X CHANGING AREA BENCH	
BLU DOT	WEST ELM
	
<p>B2</p> <p>Item Name: Daybench Item No.: 226282700809 Description: This is a bench. A really beautifully proportioned and well executed bench. It does not connect to the internet, disrupt industry or reimagine a damn thing. It's just good. Ink Leather: An aniline leather with a soft matte finish and velvety feel</p> <p>Weight: 33 LBS Dimensions: 55 in W x 19 in D x 17 in H</p> <p>Options: Blush, Grey/Green, Oxblood leather</p> <p>Environmental Certifications: None</p> <p>Recycled or Recyclable</p>	<p>Item Name: Logan Industrial Dining Bench Item No.: 7887809 Description: Made of solid wood, re-sawing and rough-hewing give our Logan Industrial Dining Bench its rugged good looks. The process makes each piece subtly one-of-a-kind.</p> <p>Weight: Dimensions: 64" w x 16" d x 19" h.</p> <p>Options: Solid acacia wood</p> <p>Environmental Certifications: None</p> <p>Recycled or Recyclable</p>
\$1,199.20 Price	\$319.20 Price



SECTION x: CYCLE & YOGA STUDIO/ RETAIL LOUNGE		
X.X Spin Studio Lighting	X.X Yoga Studio Lighting	X.X Yoga/ Lounge Lighting
FLOS	FLOS	MOOI
		
<p>L</p> <p>Item Name: AIM Multicanopy Item No.: FLSAIM48 Description: Created by the Bouroullec brothers in 2010, the AIM ceiling light is a design stripped to its most basic - and beautiful - essence. This innovative form of modern pendant lighting is constructed from a varnished aluminum sheet with a photo-etched optical PC (polycarbonate) shade. The internal reflector is photo-etched ABS. The cable can be adjusted to allow the fixture head and light distribution to be aimed in whatever way you choose.</p> <p>Weight: 36lb Dimensions: 9.6" H x 8.3" W x 8.3" D</p> <p>Options: White, Bronze, Black</p> <p>Environmental Certifications: UL</p> <p>Recycled or Recyclable</p>	<p>Item Name: Arrangements - Small Item No.: FLSF0406030 Description: Arrangements is a modular system of geometric light elements that can be combined in different ways, creating multiple compositions into individual chandeliers. Each unit simply attaches onto the previous one as if resting, balancing perfectly as a part of a glowing chain</p> <p>Weight: .09lb Dimensions: 15.7" H x 15.7" W</p> <p>Options: Circle, Square, Straight, Broken Line, Teardrop shape</p> <p>Environmental Certifications: UL</p> <p>Recycled or Recyclable</p>	<p>Item Name: Non-Random Pendant Item No. M13NONRANDOM1 Description: Old ladies call them neatly coiled balls of yarn, kids talk about soap bubbles hanging from lightbulbs, some say they are there to light up Arabian nights, Moooi says they're Non Random Lights.</p> <p>Weight: Dimensions: 21.3 27.6" H x 18.9 28" L x 18.9 28" W</p> <p>Options: Black, White</p> <p>Environmental Certifications: UL</p> <p>Recycled or Recyclable</p>
\$4285 Price	\$995 Price	\$709 Price

SECTION x: Mezzanine Seating

X.X FURNITURE ITEM	
BLUT DOT	
	B3
<p>Item Name: Amicable Split Bench Item No.: BD1AM1BNCHWD Description: Two angled solid wood planes are unified by brass brackets to create an unexpectedly comfortable seat. The uncomplicated form is suitable for any use in any room (entry way, dining room, bedroom) or contract settings.</p> <p>Weight: Dimensions: 16" H x 60" W x 15" D</p> <p>Options: White Oak, Smoke, Walnut</p> <p>Environmental Certifications: None</p> <p>Recycled or Recyclable</p>	<p>\$699 Price</p>

FINAL BUDGET

ITEM	COST PER SQFT	AREA	SUBTOTAL
CONSTRUCTION	~\$175	8700 SQFT	~\$1,522,500
PROFESSIONAL FEE	\$1	8700 SQFT	\$8,700
FF&E			\$112,030
TOTAL			\$1,643,230

