

DESIGNWAVE



HIGHWOODS PROPERTIES

IDSN 4202

PORTFOLIO THREE

GHOST KITCHEN AND GRAB & GO MARKET

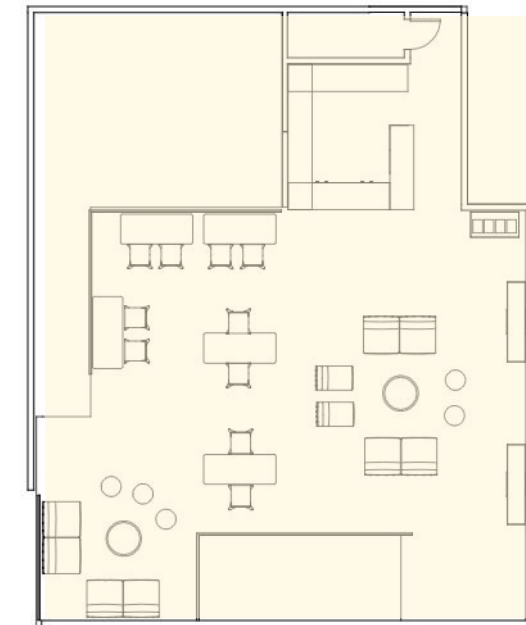
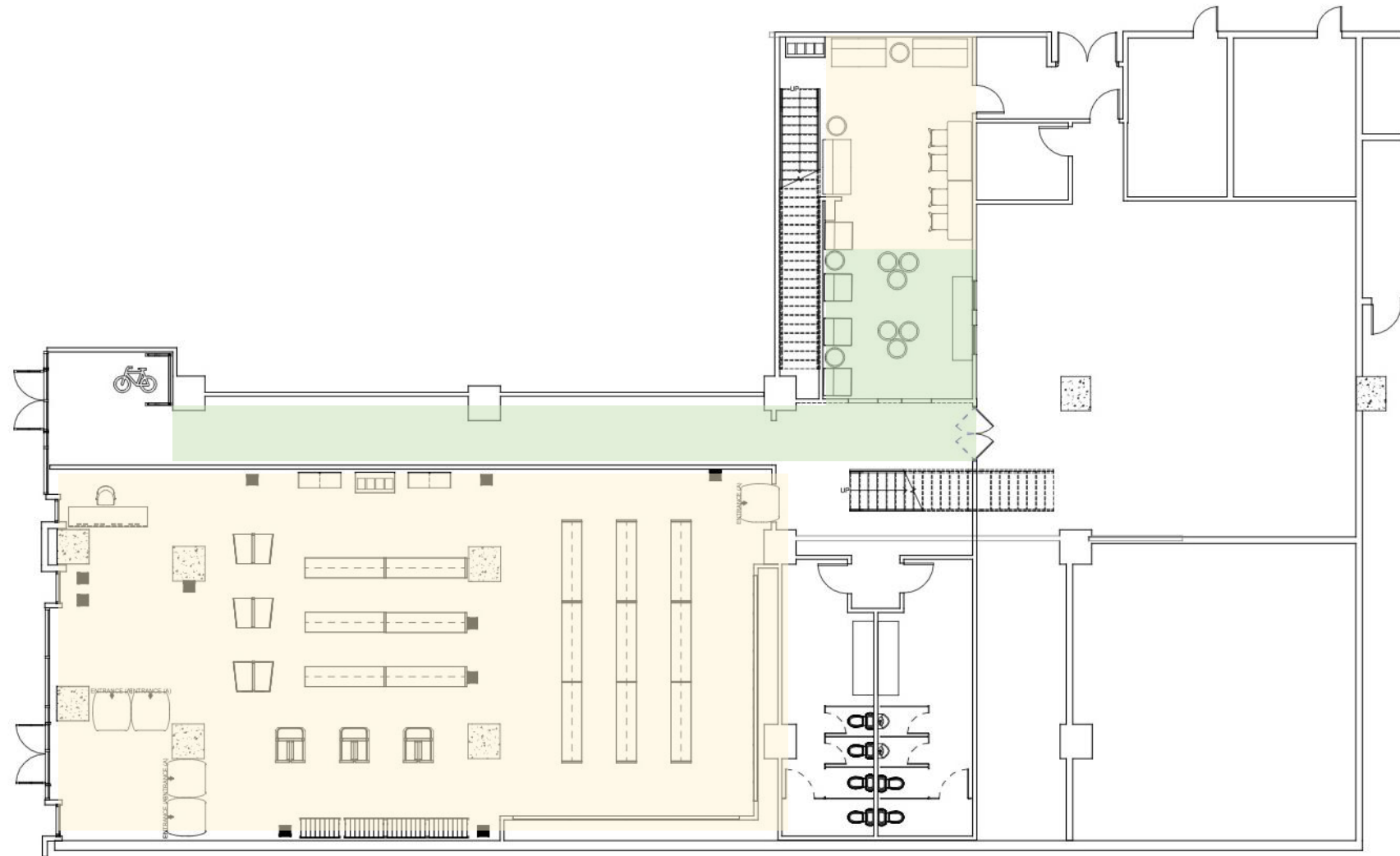
ABIGAIL GONZALEZ | SAMANTHA BRIDGES | AMBER COUSAR | MARISA REINS

We will create a **Grab & Go Market** and a **Ghost Kitchen** that will benefit downtown Raleigh and Fayetteville St. The Grab & Go Market will be valuable to many involved, especially the residents, neighbors and workers of the **PNC Plaza Suit 120**. One will be able to stop in to get a quick healthy meal or drink before returning to work or beginning their day. The Ghost Kitchen will be a resourceful addition to consumers in the delivery range that order take-out food.

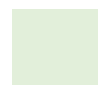

We will design a coexisting location for the Ghost Kitchen and Grab & Go Market by **adding a separate entrance** and a **half wall** separating necessary areas. We have decided to **remove the bar** entirely to maximize the space for circulation and product placement.

For the ground level of the Market, customers will use the new entrance, on the right side of the storefront, and begin grocery shopping. From the market you can access the stairway to the mezzanine level, where you will find conveniences similar as downstairs. The Market is **cashier-less**, therefore when items are removed from the shelves they are added to ones' online cart. Their account is then charged once they leave the store.

The original entrance will lead to the Ghost Kitchen. Walking in, bike parking will be available, then wayfinding will lead a pathway down to the kitchen where drivers can pick up their **delivery** orders or wait in a waiting area.



LEGEND

-  GHOST KITCHEN
-  GRAB & GO MARKET

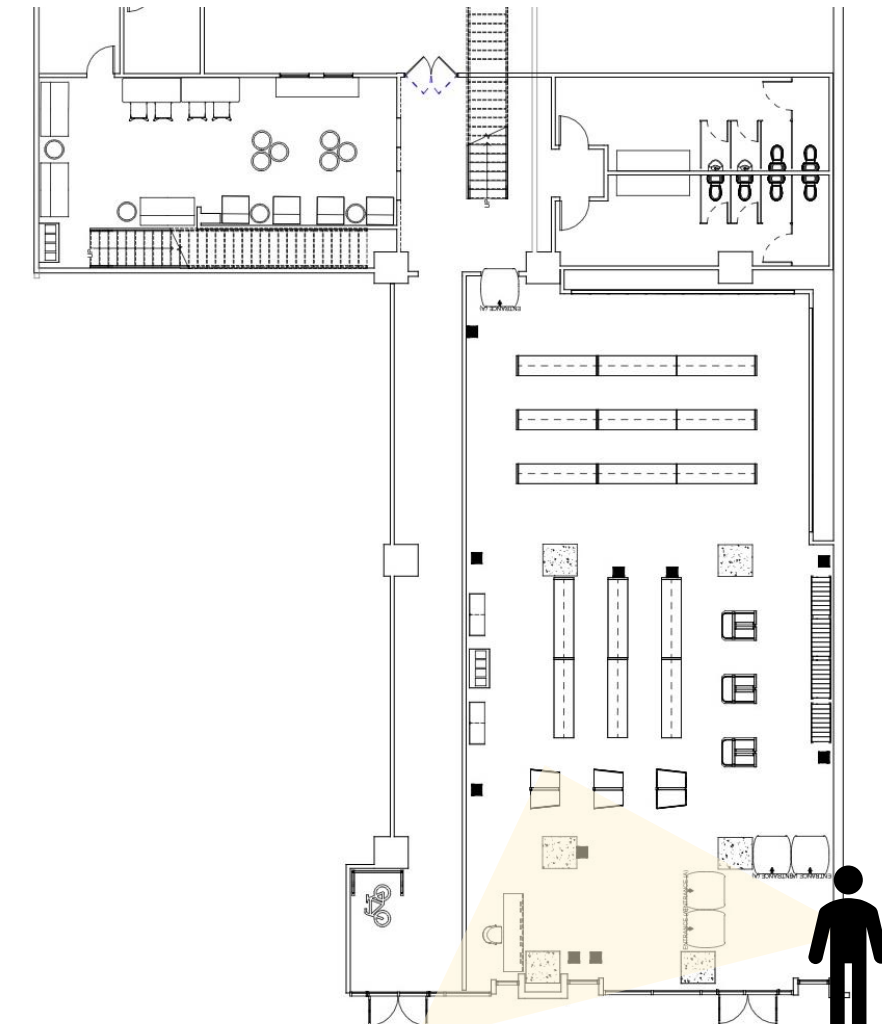
SCALE: 3/16" = 1'0"



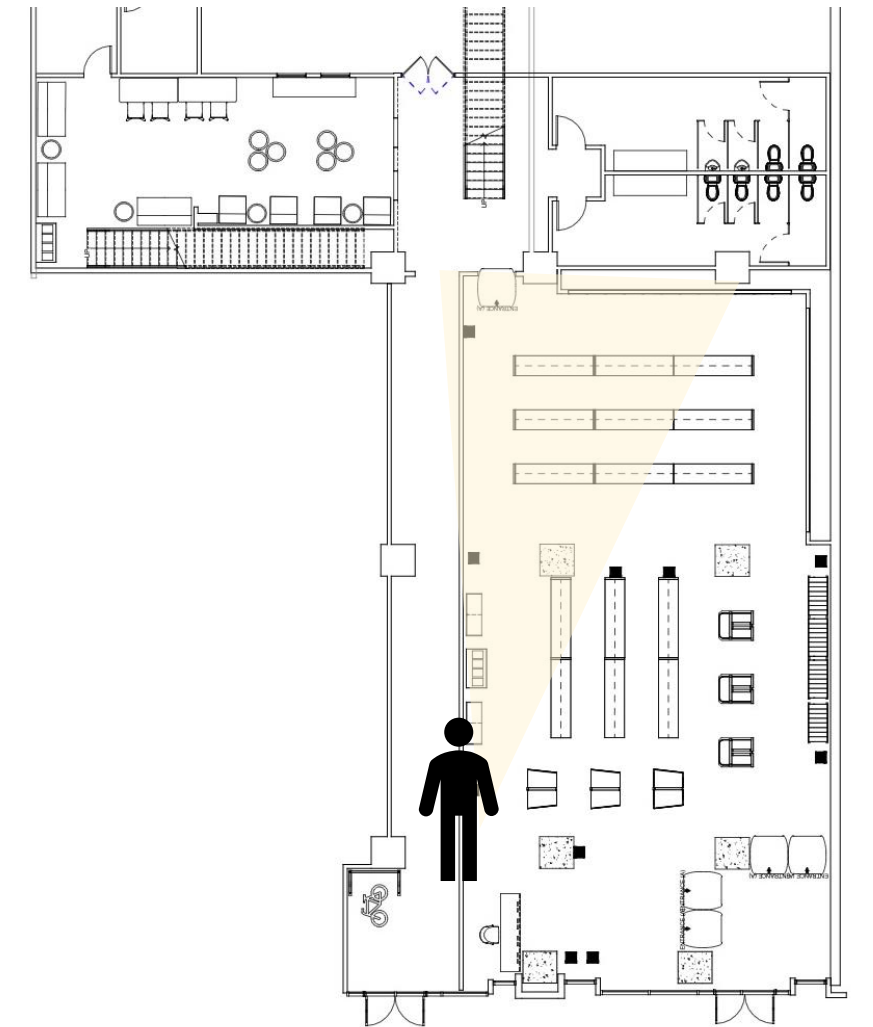
FLOOR PLAN



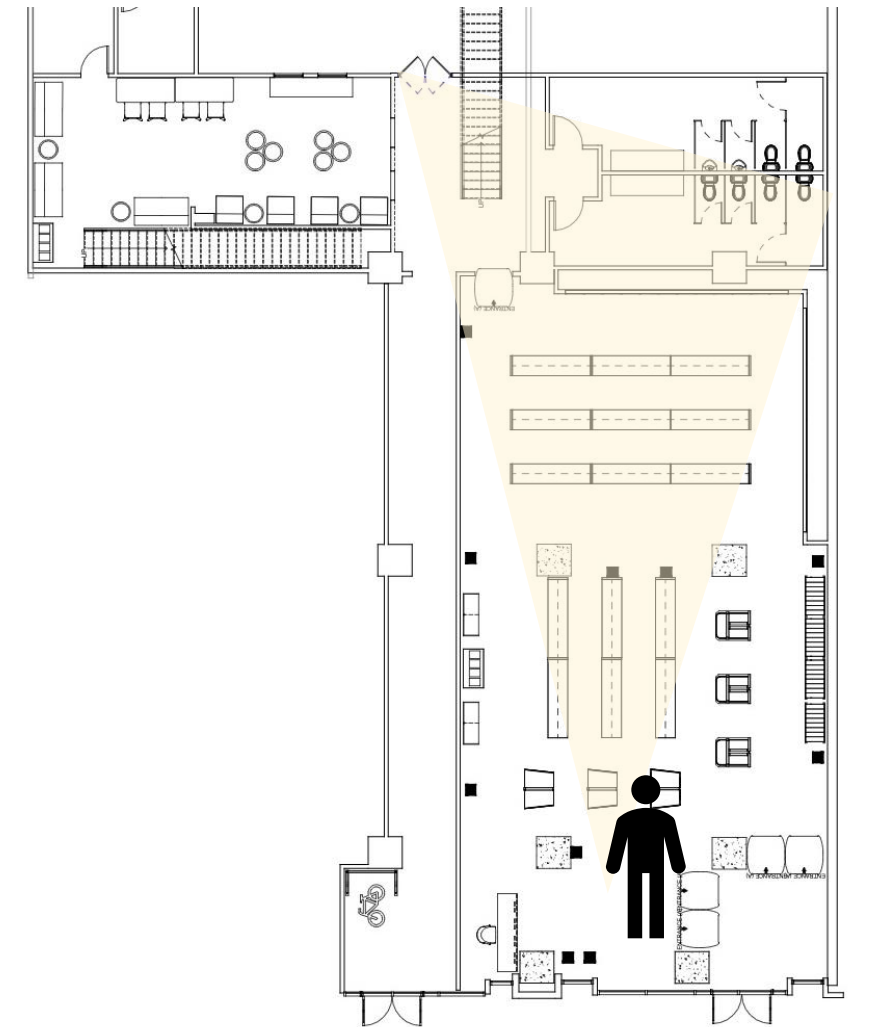
SECTION VIEW



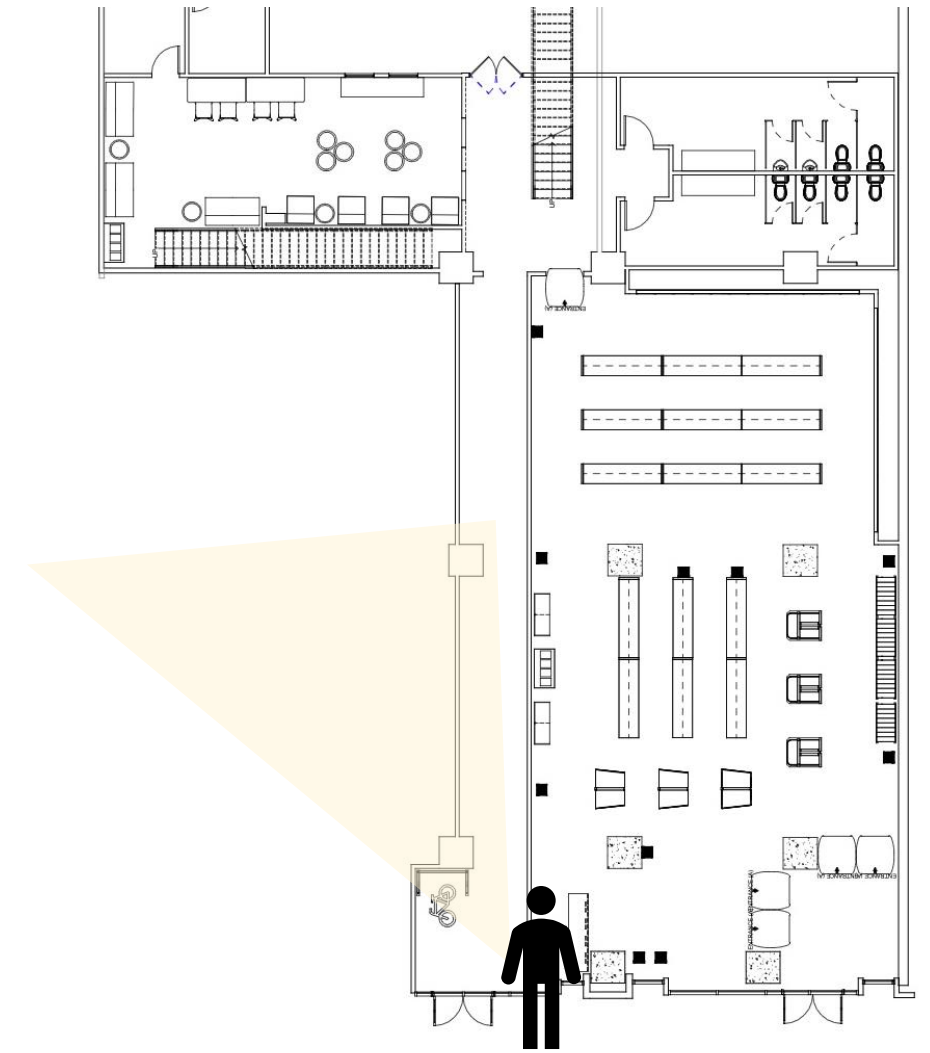
PERSPECTIVE: GRAB & GO MARKET ENTRANCE



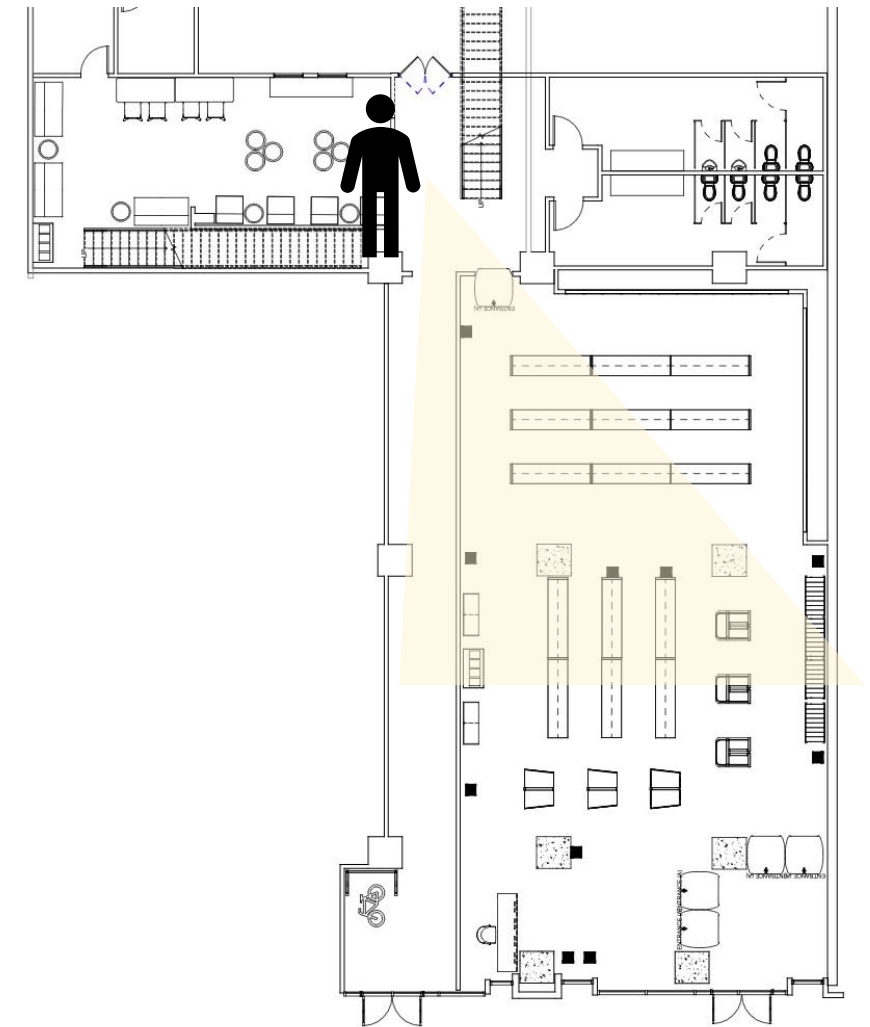
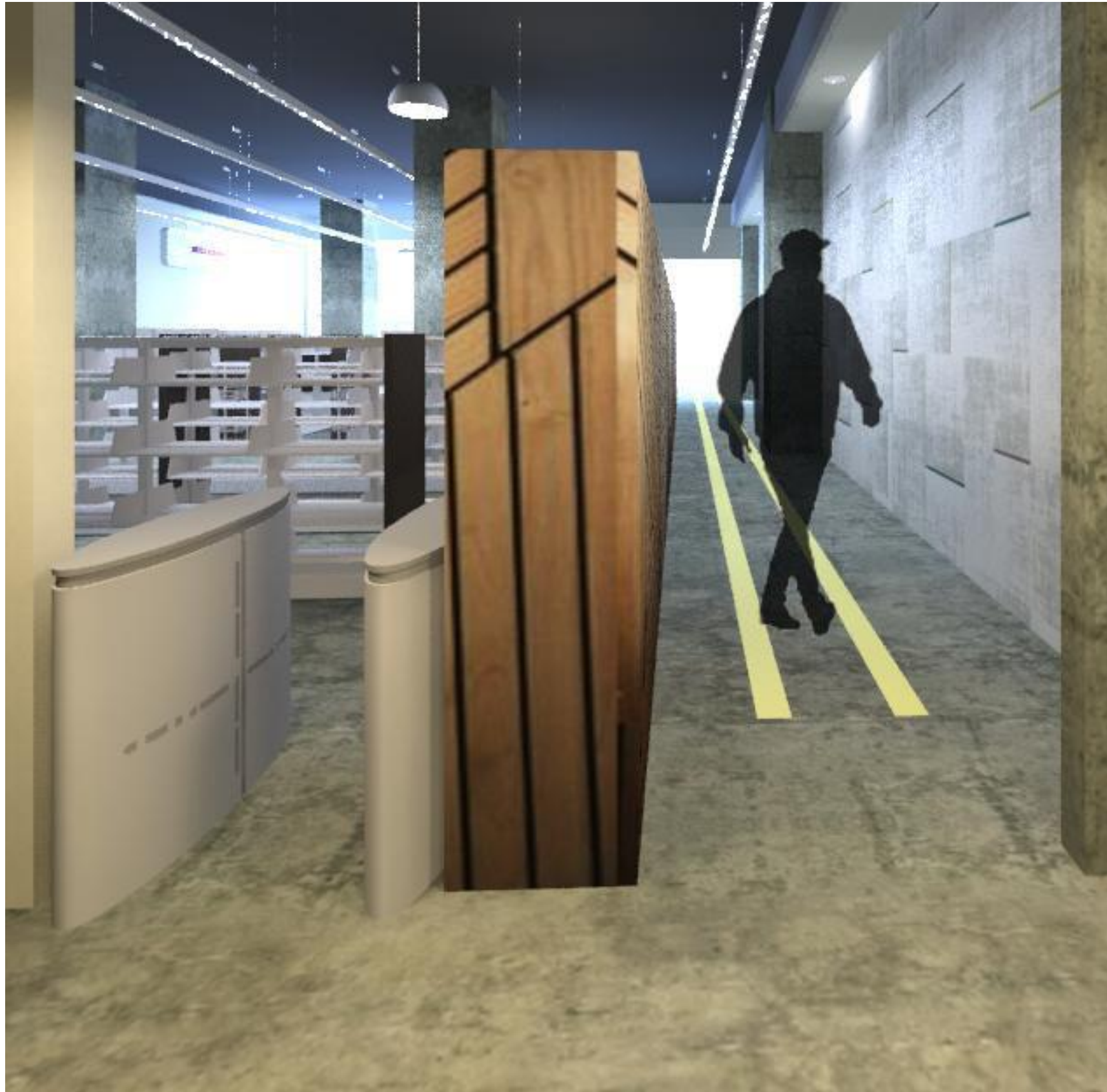
PERSPECTIVE: GRAB & GO MARKET



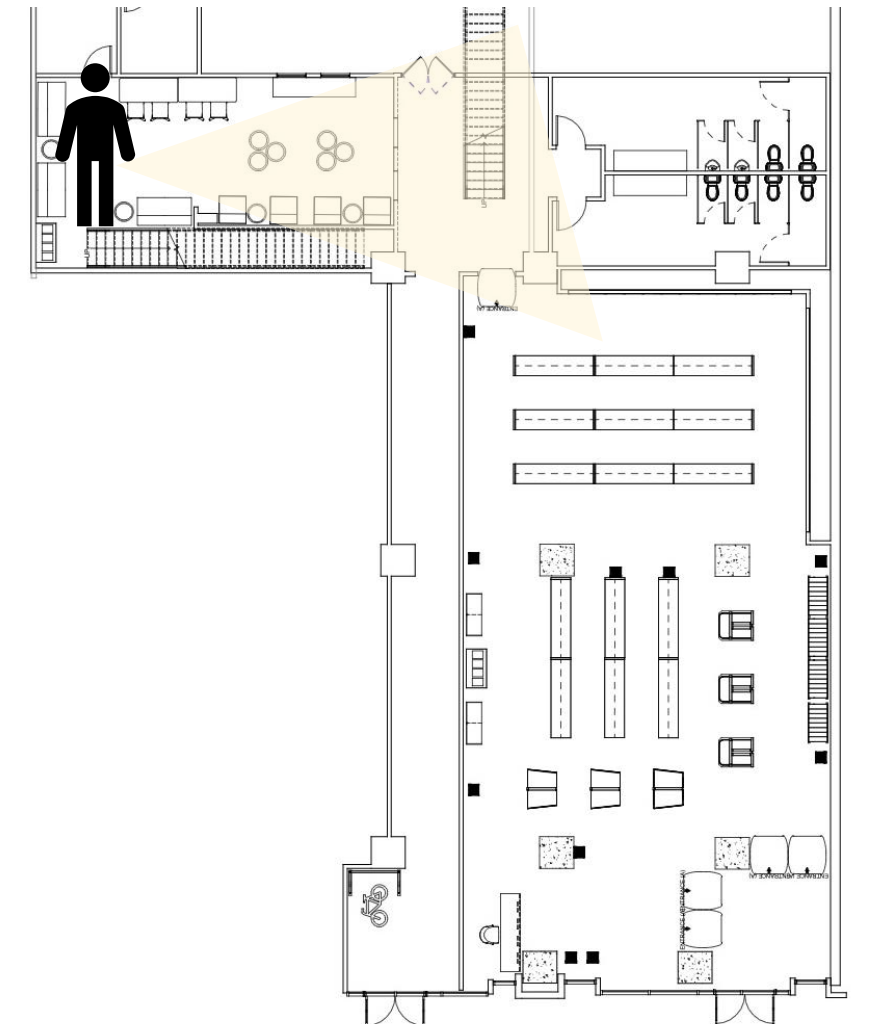
PERSEPECTIVE: OVERVIEW



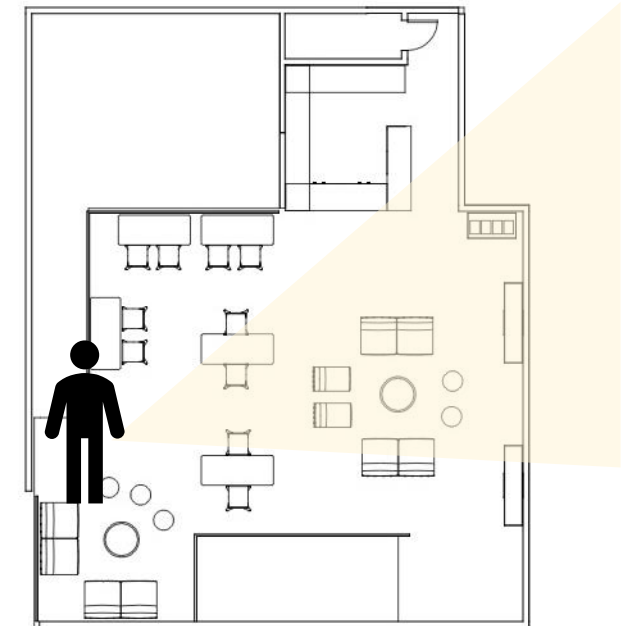
PERSEPECTIVE: GHOST KITCHEN PATHWAY



PERSEPECTIVE: OVERVIEW



PERSEPECTIVE: WAITING AREA



PERSEPECTIVE: **MEZZANINE**



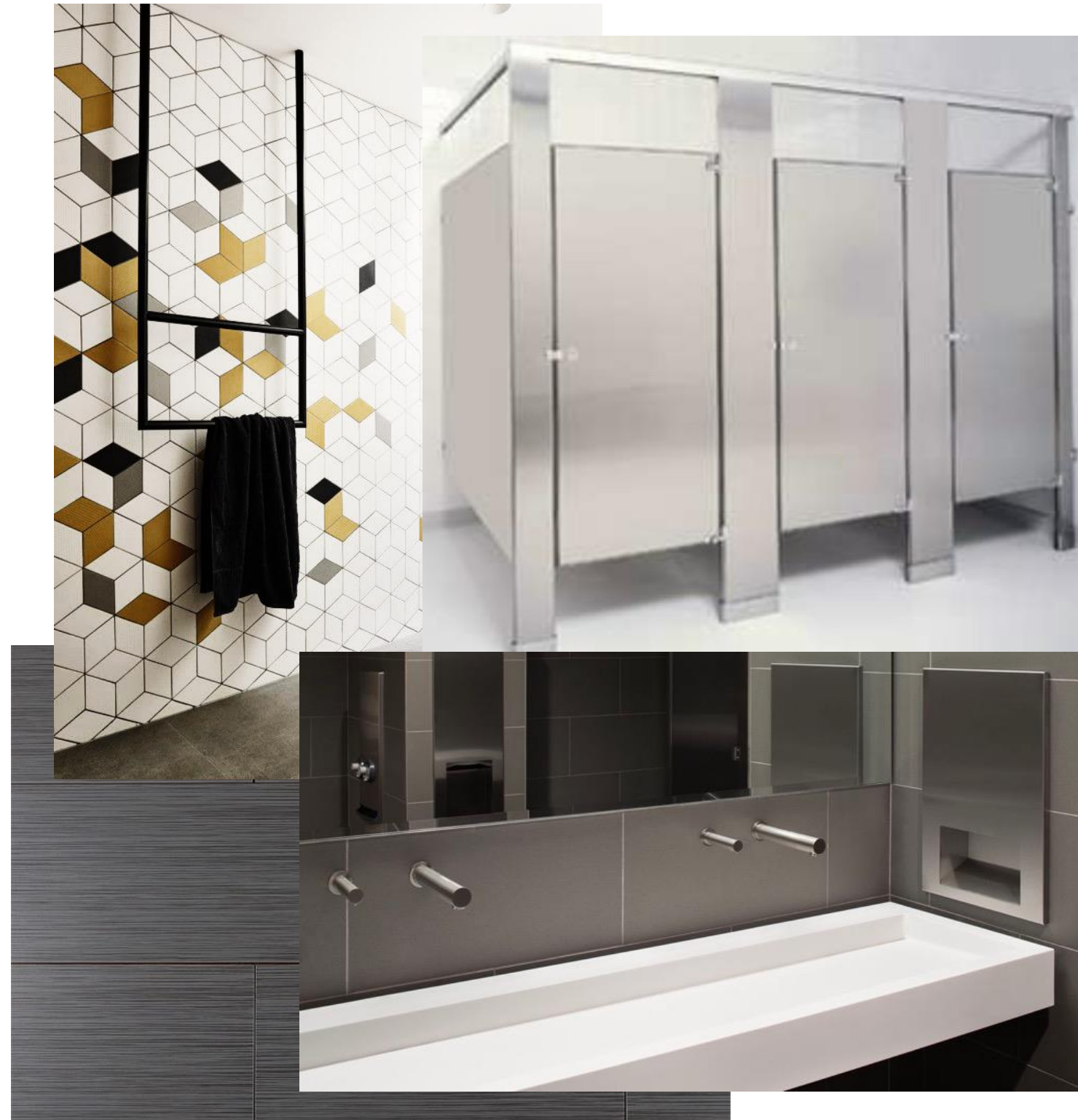
VISION BOARDS: GHOST KITCHEN





VISION BOARDS: GRAB & GO MARKET

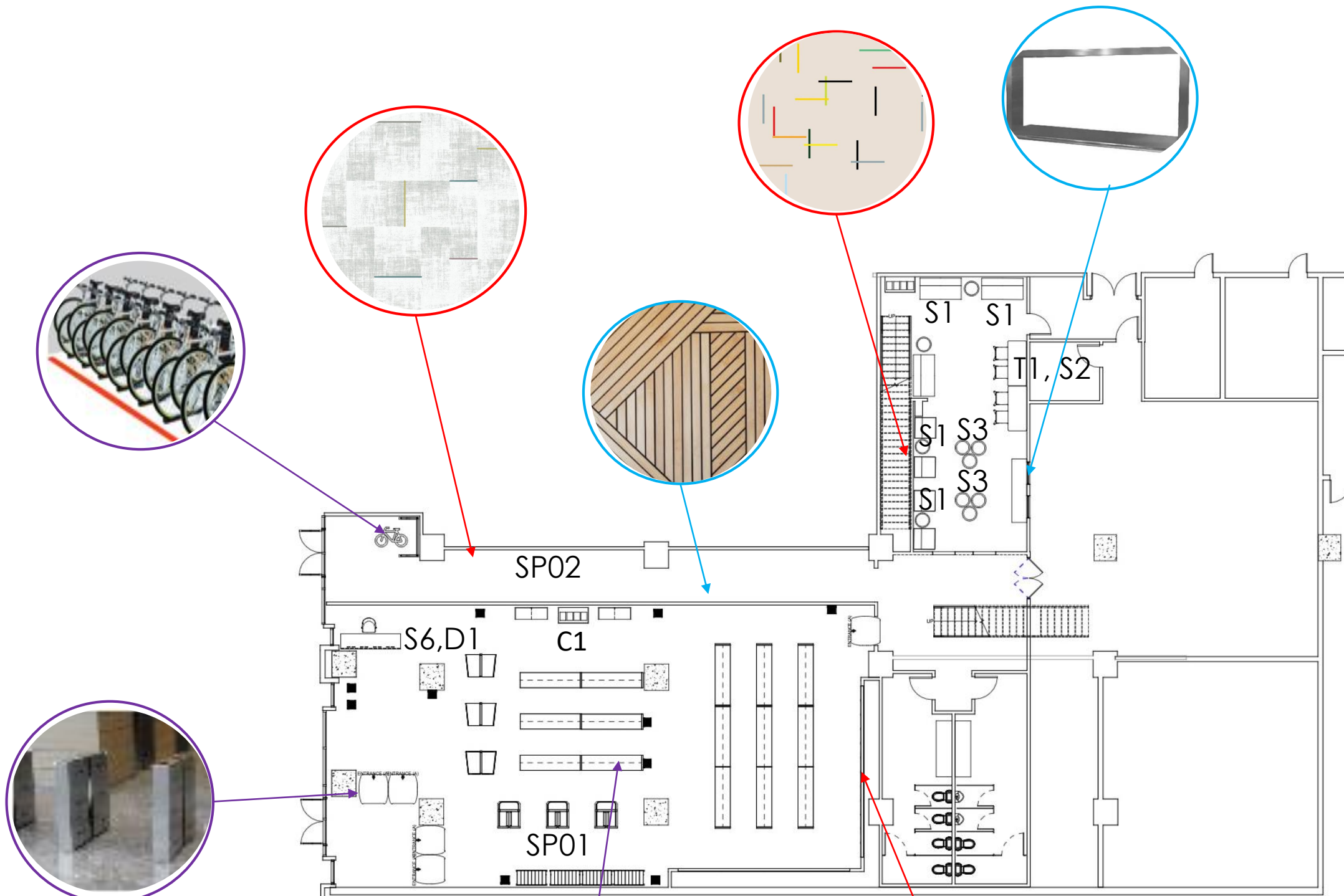




VISION BOARDS: RESTROOMS

LEGEND

- SP01: Grab & Go Market
- SP02: Ghost Kitchen
- SP03: Mezzanine



LEGEND

- WALL COVERINGS
- EQUIPMENT
- NEW CONSTRUCTION



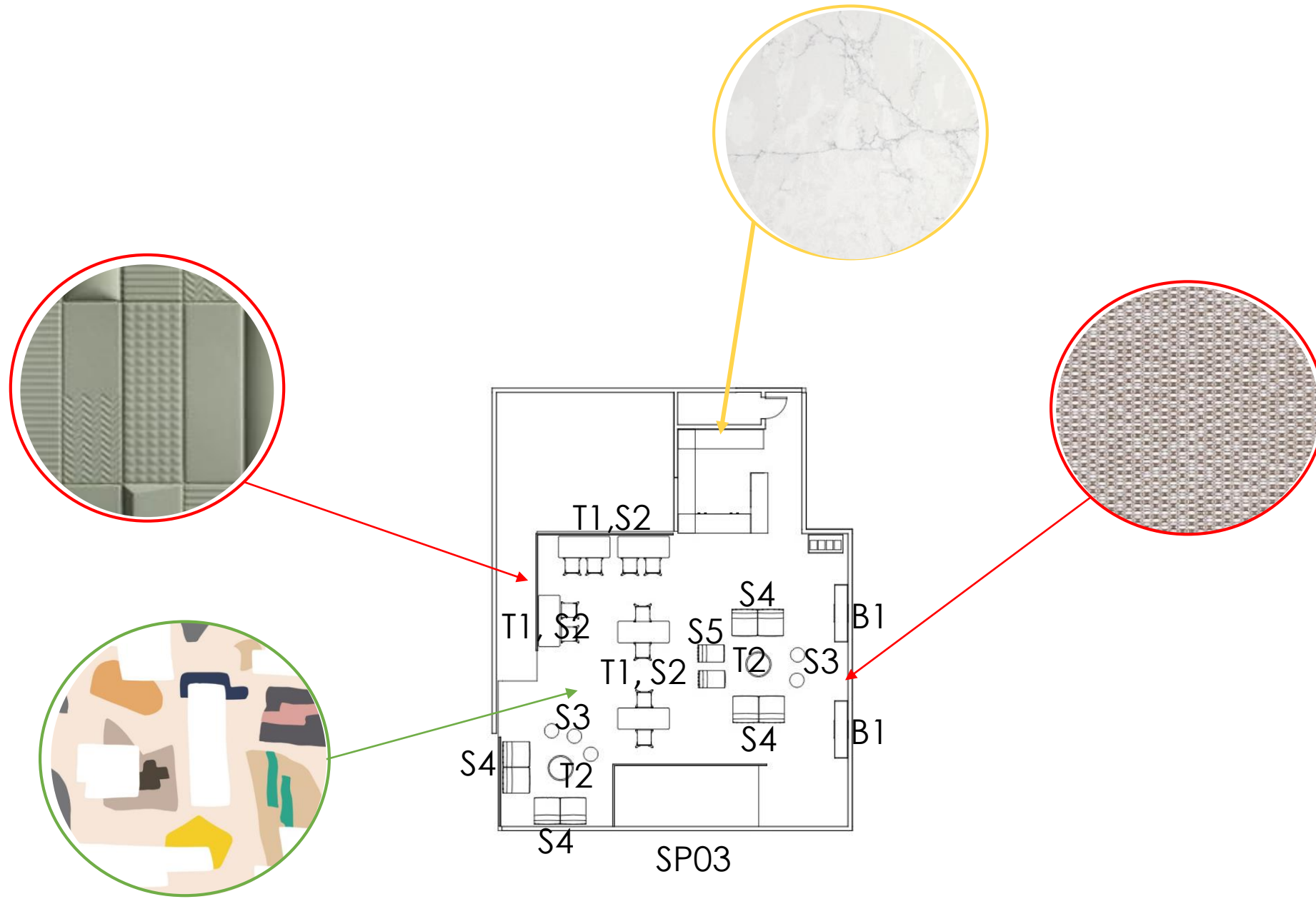
SCALE: 3/16" = 1'0"



FURNITURE PLAN: GROUND LEVEL

LEGEND

- SP01: Grab & Go Market
- SP02: Ghost Kitchen
- SP03: Mezzanine



LEGEND

- WALL COVERINGS
- COUNTERTOP
- CEILING COVERING

SCALE: 3/16" = 1'0"



FURNITURE PLAN: MEZZANINE LEVEL

SECTION: MARKET

STEELCASE

STUDIO TK

Chair



(S6)

Item Name: Sterling Conference Chair - With Arm
from West Elm Work Collection
Item No.: WESMDC5WA
Description: The sculptural silhouette and retro-inspired base of West Elm Work Sterling pay homage to Midcentury design. Crafted and designed for the workplace, Sterling chairs offer a generous sit for extended comfort.

Dimensions: 24" W, 25" D, 31.75 / 36.75" H

Options: Black – 0835
Milk – 4242
Dark Bronze – 7278
Night Bronze Lux – 4B24
Matte Brass Lux – 4B22
Polished Aluminum – 8046

Environmental Certifications: BIFMA Recycled or Recyclable: N/A

Price: \$631
Items: 1



Item Name: Clip

Item No.: STJS
Description: Clip is a versatile seating option designed by the Swedish architectural partnership Claesson Koivisto Rune.

Clip was inspired by the common hair band used on the head. Visually, it creates the curvature of the back with the clip.

Dimensions: 25" W, 22" D, 28 / 33" H

Options: five-star caster, four-leg in metal, four-leg in wood, and in pedestal cross-base

Environmental Certifications: N/A Recycled or Recyclable: N/A

Price: \$1,064

Utensils & Coffee Station



(C1)

Item Name: Denizen Credenza
Item No.: CODC5230
Description: Supports displays with smart cord management; two self-closing drawers offer storage for files and other accessories.

Weight:N/A
Dimensions: 52 in W, 19 in D, 30 in H
Options: Oak, Maple, Grey ash, cherry, walnut, or Teak veneer. Brushed Nickel or painted base.

Environmental Certifications: SCS Indoor Recycled or Recyclable: N/A

Price: \$3,404
Items: 2



Item Name: low, side-by-side box
Item No.: ZXLF

Description: Wood in a range of elegant wood-based furniture

Weight:N/A
Dimensions: 24" D, 60" W, 25" H
Options: Grey oak and Smoked Oak

Environmental Certifications: N/A Recycled or Recyclable: N/A

Price \$5,608

Desk



(D1)

Item Name: Big Table
from Turnstone
Item No.: TS4TL40
Description: Anchors spaces, and great for working together on projects, meetings and team celebrations.

Weight: 385 lb
Dimensions: 96 in W, 48 in D, 40 in H
Options:

Environmental Certifications: ANSI/BIFMA level Certified Level 1
SCS Indoor Air Advantage Certified
SCS IAQ Gold Certified in North America
Recycled or Recyclable: Up to 17%

Price: \$1,417
Items: 1



Item Name: AC Executive
Item No.: ZXXT
Description: . The tables have X-Legs and wire management shrouds below. Wood power access grommets are available in one, two or all sections.

Weight:N/A
Dimensions: 70" W, 36" D, 30" H
Options: Wood Finish: Smoked Oak, Grey Oak or Brushed Light Oak

Environmental Certifications: N/A
Recycled or Recyclable: N/A

Price: \$4,617

DESIGNWAVE

SECTION: GHOST KITCHEN

STEELCASE

STUDIO TK

Lounge



(S1)

Item Name: CAMPFIRE BIG LOUNGE
 Item No.: TS3BC
 Description: Fully upholstered couch in a wide range of colors. Newly added is a pull seam down the center of the 66" and allows the fabric to stretch and retain its shape against wear and tear.
 Dimensions: 29" H x 32" D x 66" W
 Options: SERPENTINE, ISLAND, CORNER
 Environmental Certifications: SCS Indoor Advantage™ Gold certified for indoor air quality in North America level® 1 certified to ANSI/BIFMA e3 standard. Recycled content, regional materials, rapidly renewable materials, and low-Emitting materials
 Recycled or Recyclable: 23% recyclable 1% recycled content

Price: \$1,069.80
 Items: 5



Item Name: CLIQUE BENCH
 Item No.: STP4B
 Description: The Clique bench collection creates a place for coworkers to gather and meet. Ideal for perimeter benching in meeting rooms or cafes, back-to-back booth scenarios or stand-alone benches in a lobby.
 Dimensions: 30"H x 24" D x 72" W
 Options: with/without backs
 Environmental Certifications: N/A

Recycled or Recyclable N/A

Price: \$2,183

Tables



(T1)

Item Name: FromEnea Café
 Item No.: H35-T307242GW
 Description: From the conference room to the cafeteria, Enea offers a clean and contemporary range of round, rectangular and oval tables in four heights.
 Dimensions: 72" W, 30" D, 30" H
 Options: Laminate or solid wood tops on single and dual bases. Black gloss, white gloss, and silver metallic powder coat
 Environmental Certifications: N/A
 Recycled or Recyclable: 70.5% Recyclable / 26.5% Recycled Content.

Price: \$4,683
 Items: 2



Item Name: Bevy Pedestal
 Item No.: STETV
 Description: Bevy is a dynamic table platform that enables endless configuration. A variety of heights and sizes give people the ability to work in a variety of ways in a space.
 Dimensions: 30" Diam. x 36"-42" H
 Options: Round, Square and Rectangular tops in a variety of sizes

Environmental Certifications: N/A
 Recycled or Recyclable: N/A

Price: \$837

Lounge



(S7)

Item Name: CAMPFIRE HALF LOUNGE
 Item No.: TS3BC
 Description: Fully upholstered couch in a wide range of colors. Newly added is a pull seam down the center of the 66" and allows the fabric to stretch and retain its shape against wear and tear.
 Dimensions: 29" H x 33" D x 32" W
 Options: SERPENTINE, ISLAND, CORNER
 Environmental Certifications: SCS Indoor Advantage™ Gold certified for indoor air quality in North America level® 1 certified to ANSI/BIFMA e3 standard. Recycled content, regional materials, rapidly renewable materials, and low-Emitting materials
 Recycled or Recyclable: 23% recyclable 1% recycled content

Price: \$1022.40
 Items: 4



Item Name: CLIQUE BENCH
 Item No.: STP4B
 Description: The Clique bench collection creates a place for coworkers to gather and meet. Ideal for perimeter benching in meeting rooms or cafes, back-to-back booth scenarios or stand-alone benches in a lobby.
 Dimensions: 30"H x 24" D x 72" W
 Options: with/without backs
 Environmental Certifications: N/A

Recycled or Recyclable N/A

Price: \$1500

Chair



(S3)

Item Name: Corkdrop
 Item No.: SKRD07
 Description: Corkdrop is a versatile stool/side table machined of solid high density natural cork with a solid walnut insert/detail and low-maintenance, hand-rubbed tung oil/wax finish. The product may be used individually or in groupings.
 Dimensions: 12" W, 12" D, 16" H
 Options: N/A
 Environmental Certifications: N/A
 Recycled or Recyclable: N/A

Price: \$564
 Items: 6



Item Name: Kuskoo Bi Chair, Wood Leg
 Item No.: ALKB
 Description: Shell can be finished two ways and optionally upholstered in total or embellished with just an upholstered seat pad. The cut-out shell provides ample back and arm support for long stretches of work.
 Dimensions: 23.5" W, 21" D, 17.75" H
 Options: no upholstery, interior seat and back upholstery, or full upholstery on wood base
 Environmental Certifications: N/A
 Recycled or Recyclable: N/A

Price: \$697

Stools



(S2)

Item Name: FromEnea Café
 Item No.: H35-T307242GW
 Description: From the conference room to the cafeteria, Enea offers a clean and contemporary range of round, rectangular and oval tables in four heights.
 Dimensions: 72" W, 30" D, 30" H
 Options: Laminate or solid wood tops on single and dual bases. Black gloss, white gloss, and silver metallic powder coat
 Environmental Certifications: N/A
 Recycled or Recyclable: 70.5% Recyclable

Price: \$4,683
 Items: 4



Item Name: Kuskoo Stool- Bar stool
 Item No.: ALKSB
 Description: Provides a mid-back support for longer gatherings and a metal foot rest to encourage good posture. Veneer shell nestles within a solid oak base.
 Dimensions: 16" W, 19" D, 31.5 / 39.5" H
 Options: no upholstery, interior seat and back upholstery, or full upholstery on wood base
 Environmental Certifications: N/A
 Recycled or Recyclable: N/A

Price: \$957

Side Table



(T2)

Item Name: Bolia
 New Mood coffee table .90
 Item No.: AB0301756
 Description: Variety of selected wood types and laminate colors. Modern characteristics such as the combination of wood types that are always present in the legs.
 Dimensions: 35" W, 35" D, 15" H
 Options: Oiled Oak, Oiled Walnut, White Oiled Oak, White Laminate
 Environmental Certifications: N/A
 Recycled or Recyclable: N/A

Price: \$615
 Items: 2



Item Name: Bevy Round Work Leg Table
 Item No.: STETJ
 Description: A variety of heights and sizes. Four base finishes, including polished aluminum and three powder-coat colors.
 Dimensions: 48" W, 48" D, 29" H
 Options: Laminate, Veneer, Solid Surface or Back-painted Glass .
 Environmental Certifications: N/A
 Recycled or Recyclable: N/A

Price: \$1504.20

SECTION : MEZZANINE

STEELCASE

STUDIO TK

Chair



(S3)

Item Name: Corkdrop from Skram
 Item No.: SKRD07
 Description: Corkdrop is a versatile stool/side table machined of solid high density natural cork with a solid walnut insert/detail and low-maintenance, hand-rubbed tung oil/wax finish. The product may be used individually or in groupings.
 Dimensions: 12" W, 12" D, 16" H
 Options: N/A
 Environmental Certifications: N/A
 Recycled or Recyclable: N/A

Price: \$564
 Items: 5



Item Name: Kuskoa Bi Chair, Wood Leg
 Item No.: ALKB
 Description: Shell can be finished two ways and optionally upholstered in total or embellished with just an upholstered seat pad. The cut-out shell provides ample back and arm support for long stretches of work.
 Dimensions: 23.5" W, 21" D, 17.75 / 31.5" H
 Options: no upholstery, interior seat and back upholstery, or full upholstery on wood base
 Environmental Certifications: N/A
 Recycled or Recyclable: N/A

Price: \$697

Lounge



(S5)

Item Name: Military Canvas & Marbled Rust Chair from Stephen Kenn
 Item No.: SK1SK IC 106A
 Description: Vintage US Army materials paired with a minimal, stripped-down design concept. Vintage olive green military canvas upholstery atop a steel frame with a marbled rust finish.
 Weight: 50 lb
 Dimensions: 24" W, 36" D, 30" H
 Options:
 Environmental Certifications: N/A
 Recycled or Recyclable: N/A

Price: \$1,440
 Items: 2



Item Name: Clique Bench, Two-Seat, No Back, Upholstered Leg
 Item No.: STP2AU
 Description: Benches with or without backs as well as sectional benches in a variety of configurations. Ideal for perimeter benching in meeting rooms or cafes, back-to-back booth scenarios or stand-alone benches in a lobby.
 Weight: N/A
 Dimensions: 24" W, 24" D, 18" H
 Options:
 Environmental Certifications: N/A
 Recycled or Recyclable: N/A

Price: \$1,499

Lounge



(S4)

Item Name: Military Canvas & Marbled Rust Loveseat from Stephen Kenn
 Item No.: SK1SK_IC_103C
 Description: Vintage US Army materials paired with a minimal, stripped-down design concept. Vintage olive green military canvas upholstery atop a steel frame with a marbled rust finish.
 Weight: 80 lb
 Dimensions: 64" W, 36" D, 30" H
 Options:

Environmental Certifications: N/A
 Recycled or Recyclable: N/A

Price: \$2,880
 Items: 4



Item Name: Clique six-seat bench, left full back with open ends
 Item No.: STP6FM
 Description: Benches with or without backs as well as sectional benches in a variety of configurations. Ideal for perimeter benching in meeting rooms or cafes, back-to-back booth scenarios or stand-alone benches in a lobby.
 Weight: N/A
 Dimensions: 72.5 / 96.5" W, 24" D, 18" H
 Options: Upholstered base finish in different fabrics; Metal base finish in Polished Aluminum or Fundamental and Fashion powdercoat finishes.

Environmental Certifications: N/A
 Recycled or Recyclable: N/A

Price: \$4,610

Coffe Tables



(T2)

Item Name: Bolia
 Item No.: AB0301756
 Description: Available in a variety of carefully selected wood types and laminate colours. Added modern characteristics such as the combination of wood types that are always present in the legs.
 Dimensions: 35" W, 35" D, 15" H
 Options: Oiled Oak, Oiled Walnut, White Oiled Oak, White Laminate

Environmental Certifications: N/A
 Recycled or Recyclable: N/A

Price: \$615
 Items: 2



Item Name: Freehand 29"
 Item No.: STATB16
 Description: Table sides fit together to form a number of geometric shapes that can then be finished with tabletop surfaces. Sides are available in two shapes and three sizes. Finishes include five water-based lacquer and 16 paint options. Tabletops are available in leather, felt, linoleum and glass.
 Dimensions: 26.5" W, 28.75" D, 16.5" H
 Options: Linoleum, Saddle Leather, Felt, and Back-Painted Glass on a Fundamental and Fashion powdercoat finishes as well as Metallic lacquer base.
 Environmental Certifications: N/A
 Recycled or Recyclable: N/A

Price: \$921



FURNITURE SPECIFICATIONS

Stools



(S2)

Item Name: Stella Stool - bar
 Item No.: HTNHN00SSB
 Description: Contemporary Stool with architectural lines and bent laminated wood seat for superior comfort and durability. The bent laminated seat floats for additional flexural comfort, and the rear frame provides a hook for coats & purses.
 Weight: 25lb
 Dimensions: 20" W, 22" D, 27" H
 Options: N/A
 Environmental Certifications: N/A
 Recycled or Recyclable: N/A

Price: \$567
 Items: 10



Item Name: Kuskoa Stool- Bar stool
 Item No.: ALKSB
 Description: The stools provide a mid-back support for longer gatherings and a metal foot rest to encourage good posture. A range of material options and finishes. The veneer shell nestles within a solid oak base, which can be finished five ways.
 Weight: N/A
 Dimensions: 16" W, 19" D, 31.5 / 39.5" H
 Options: no upholstery, interior seat and back upholstery, or full upholstery on wood base
 Environmental Certifications: N/A
 Recycled or Recyclable: N/A

Price: \$957

Bookecase



(B1)

Item Name: Blu Dot
 Item No.: BD1NW1SHLVNG
 Description: Powder coated steel; Suitable for display, separating spaces or exploring existential questions. Powder coated steel with inconspicuous leveling glides.
 Dimensions: 80" W, 19" D, 73" H
 Options: Oblivion, Ochre, Oxblood, Putty
 Environmental Certifications: N/A
 Recycled or Recyclable: N/A

Price: \$1,379
 Items: 2



Item Name: AC Exeuctive Storage Wall
 Item No.: ZXDO - 1089044L
 Description: 1 3/4" thick desk-height worksurface with integrated wire access doors on the back edge to provide access to a wire trough below, a working wall above, upper double flip door unit, either a single or double tower on the sides and an option for storage below the worksurface which can be left open, or be partially or totally filled with storage.

Dimensions: 108" W, 24" D, 90" H
 Options: N/A
 Environmental Certifications: N/A
 Recycled or Recyclable: N/A

Price: \$14,936

Tables



(T1)

Item Name: FromEnea Café
 Item No.: H35-T307242GW
 Description: From the conference room to the cafeteria, Enea offers a clean and contemporary range of round, rectangular and oval tables in four heights.
 Dimensions: 72" W, 30" D, 30" H
 Options: Laminate or solid wood tops on single and dual bases. Black gloss, white gloss, and silver metallic powder coat.
 Environmental Certifications: N/A
 Recycled or Recyclable: 70.5% Recyclable

Price: \$2,810
 Items: 5



Item Name: Bevy Round Work Leg Table
 Item No.: STETJ
 Description: Four base finishes, including polished aluminum and three powder-coat colors. Various top sizes in five different top surface finishes create an array of choice. Frame under-structure allows for easy wire management, along with providing strength and stability.
 Dimensions: 48" W, 48" D, 29" H
 Options: Laminate, Veneer, Solid Surface or Back-painted Glass tops on a wood base.
 Environmental Certifications: N/A
 Recycled or Recyclable: N/A

Price: \$1504



DESCRIPTION	UNIT	MULTIPLIER	SUBTOTAL
Ghost Kitchen			\$41,241.00
Mezzanine			\$38,108.00
Market			\$8,856.00
SUBTOTAL			\$88,205.00
Installation Cost	\$88,205.00	5%	\$4,410.25
TOTAL			\$92,615.25

FURNITURE BUDGET