

PNC PLAZA PHASE II

301 FAYETTEVILLE ST
RALEIGH, NC 27601-2168



"Sleek, Modern,
Diverse, & Innovative"

PLAN - FURNITURE PLAN



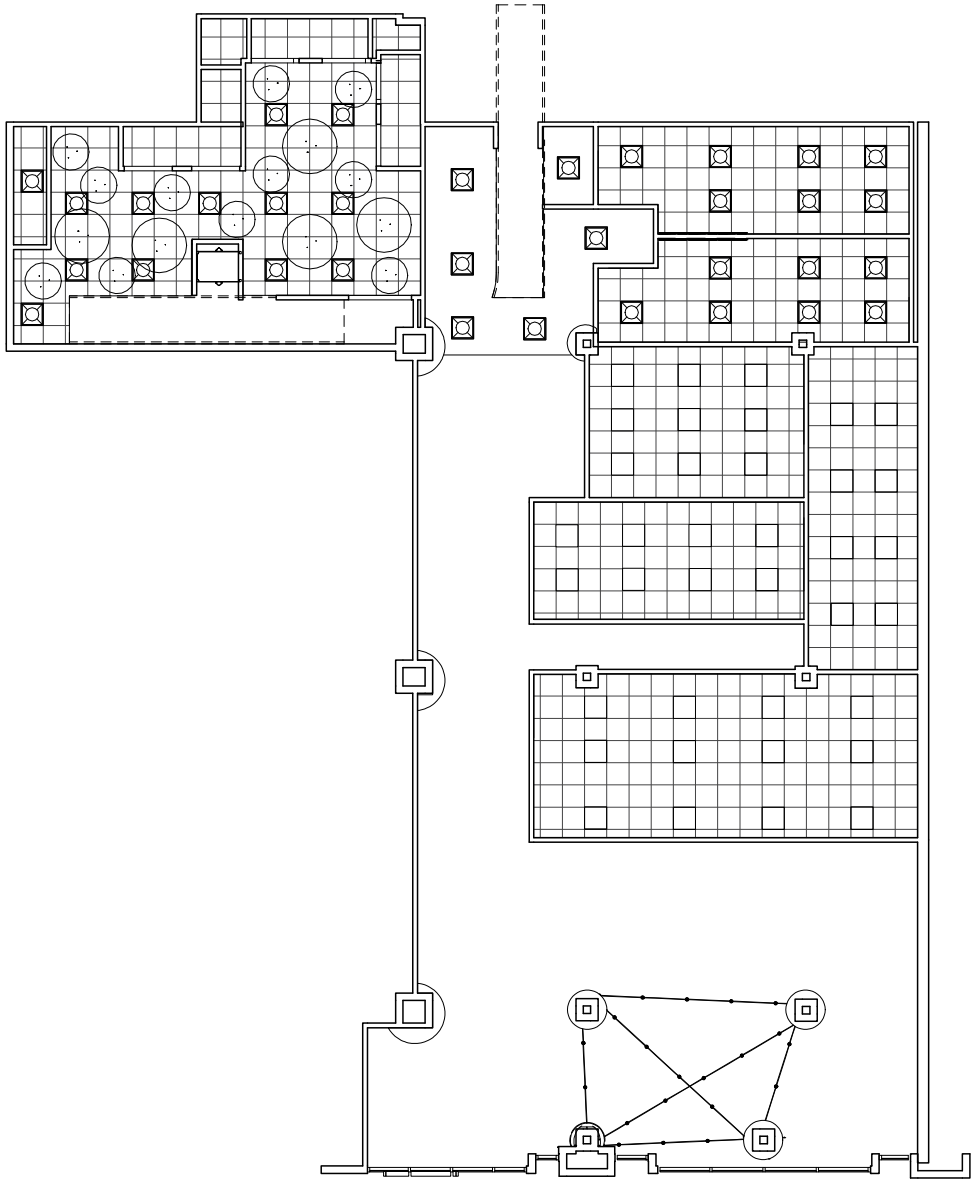
LEVEL 1



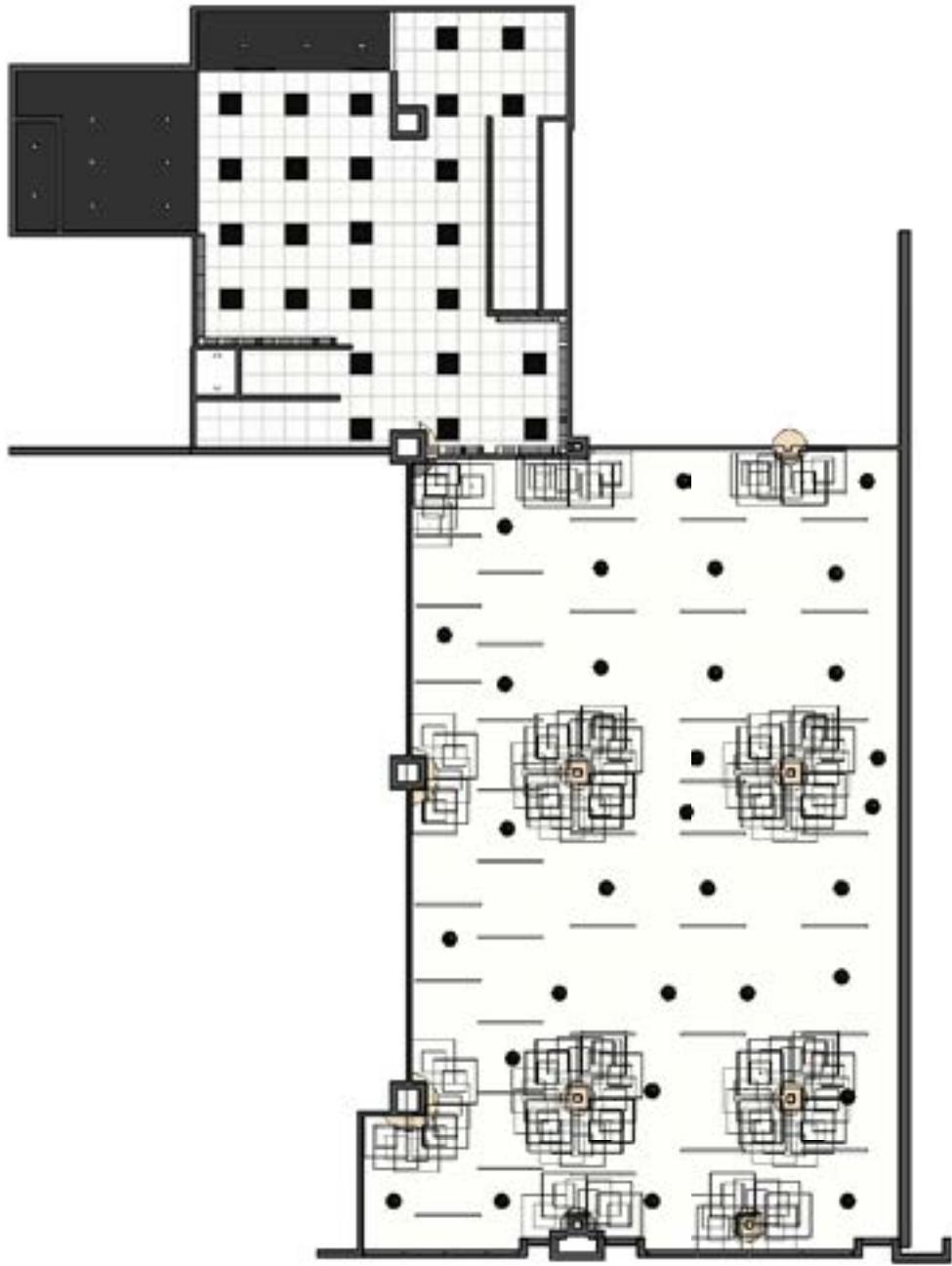
NOT TO SCALE

LEVEL 2

PLAN - REFLECTED CEILING PLAN



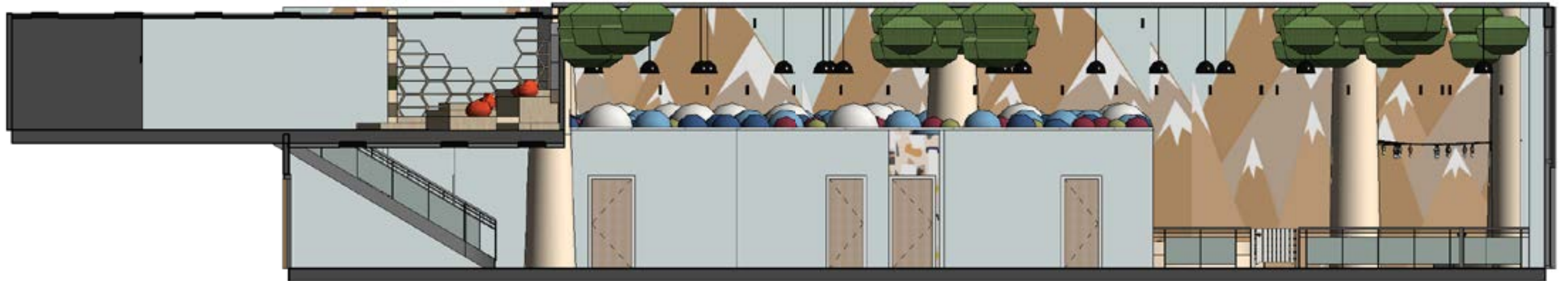
LEVEL 1



NOT TO SCALE

LEVEL 2

PLAN - SECTION

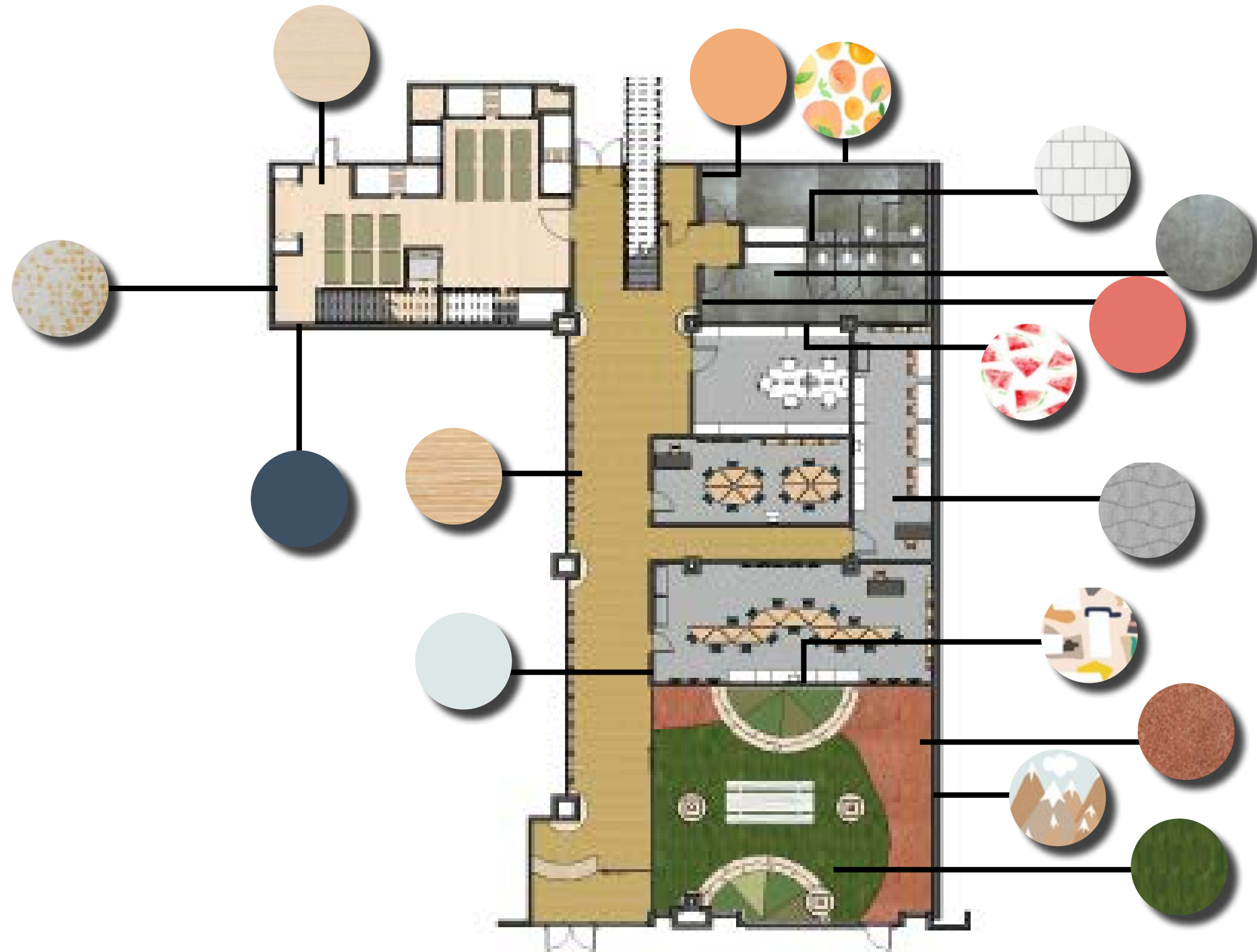


NOT TO SCALE

PRICE PLAN DEMOLITION & CONSTRUCTION - LEVEL 1

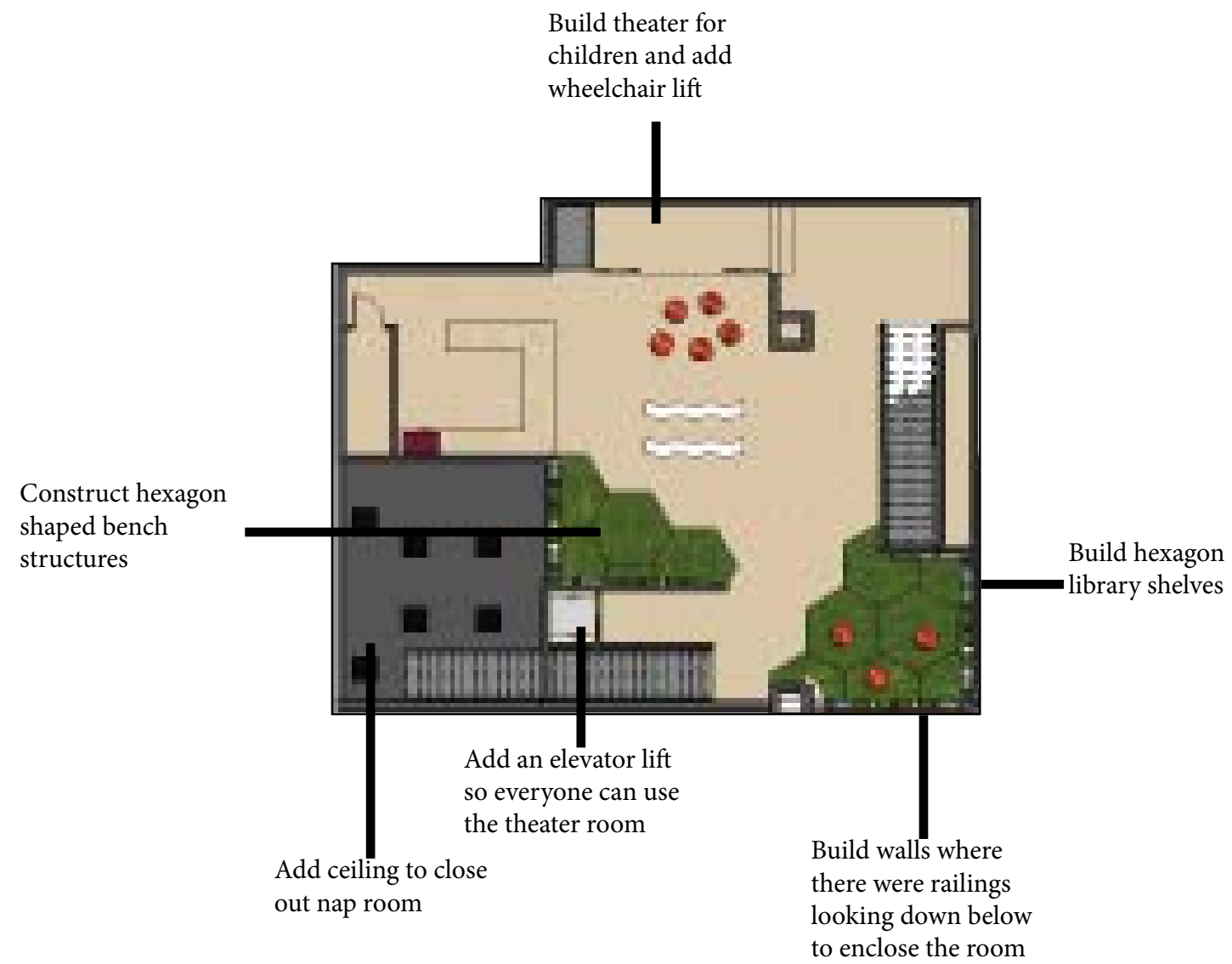


PRICE PLAN FINISHES - LEVEL 1

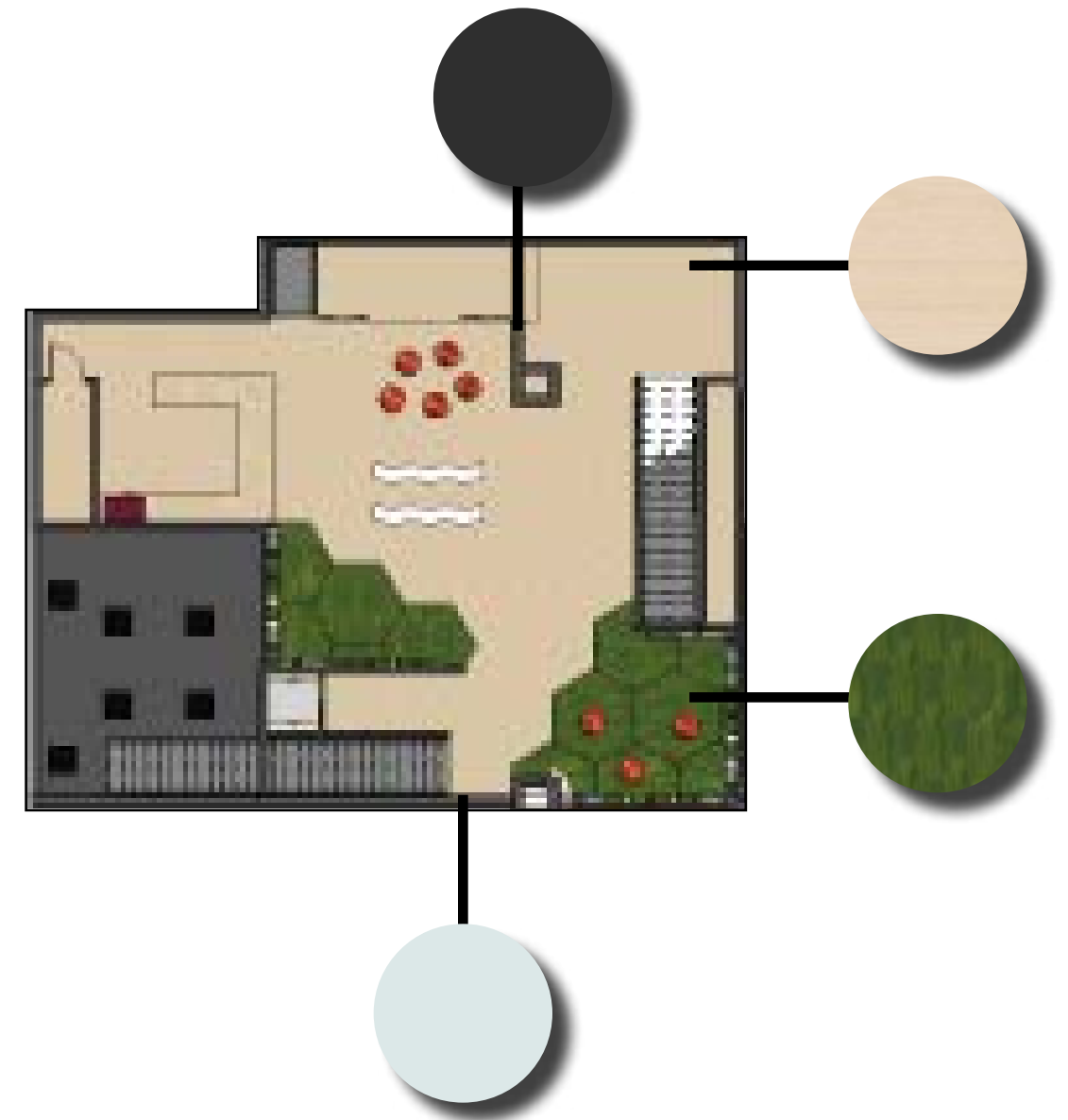


PRICE PLAN - LEVEL 2

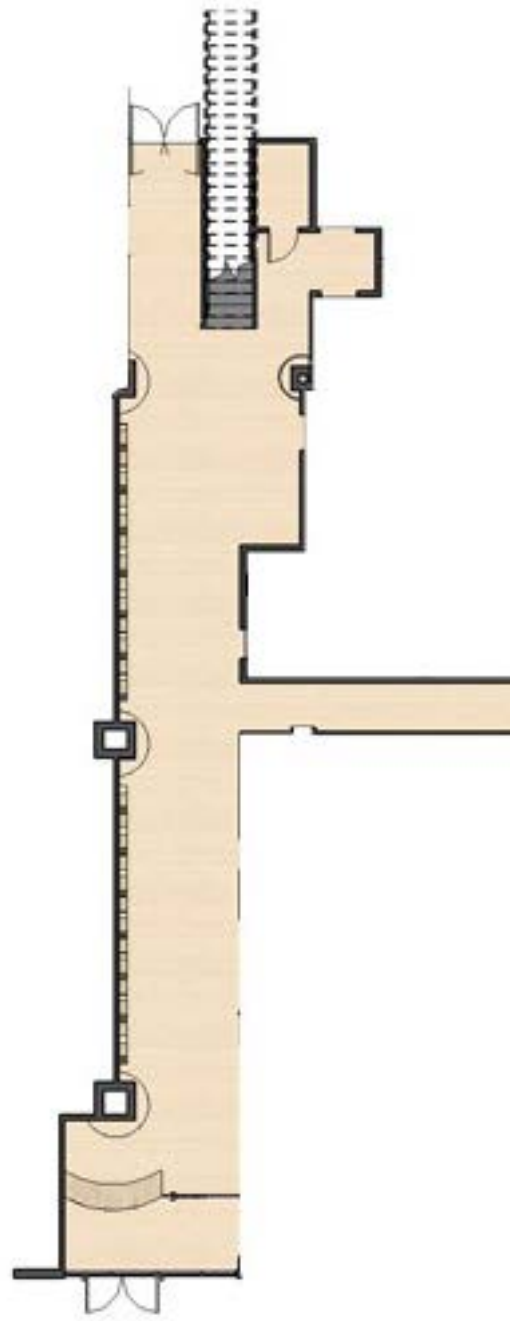
Demolition and Construction



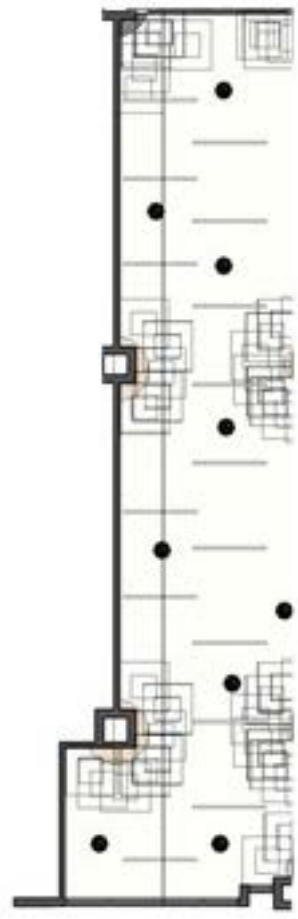
Finishes



ENTRY/HALLWAY PLANS



LEVEL 1

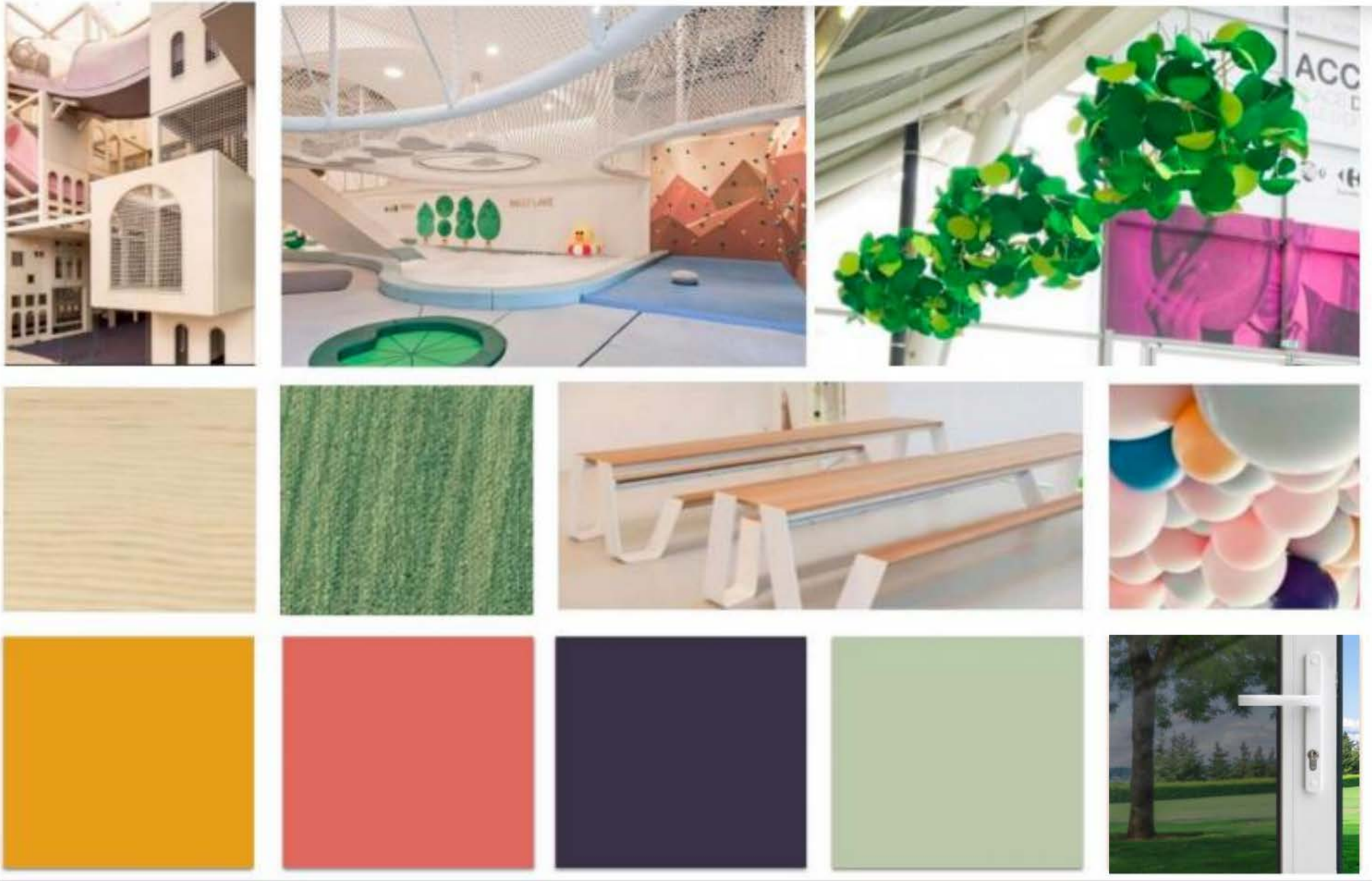


LEVEL 1

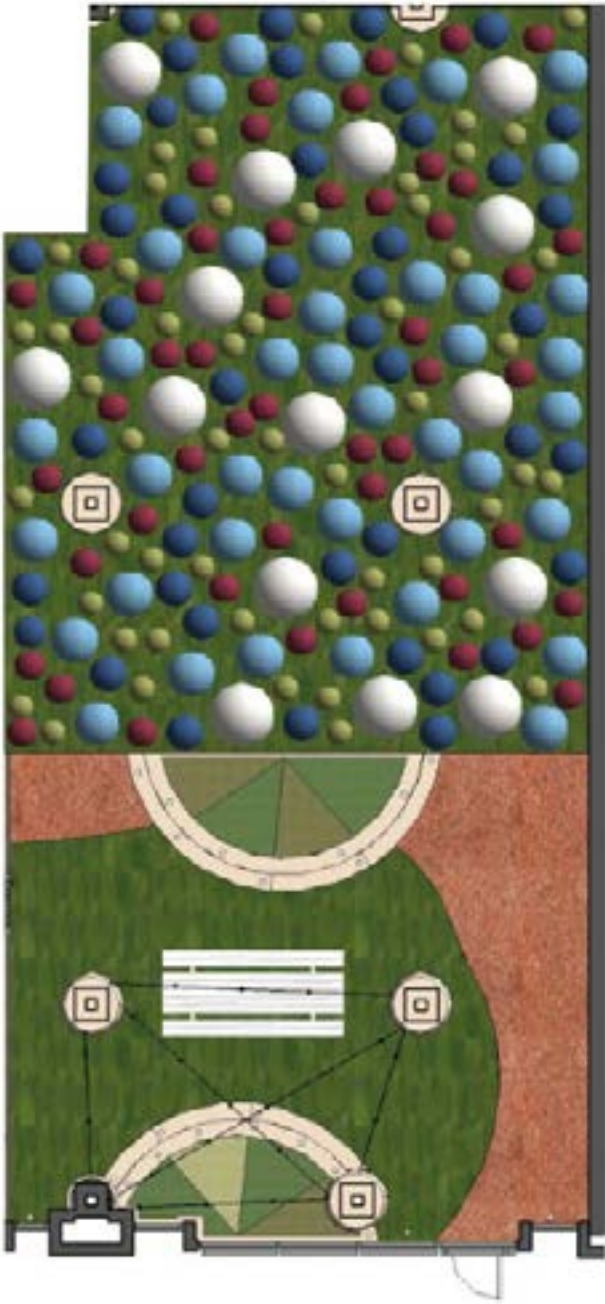
NOT TO SCALE



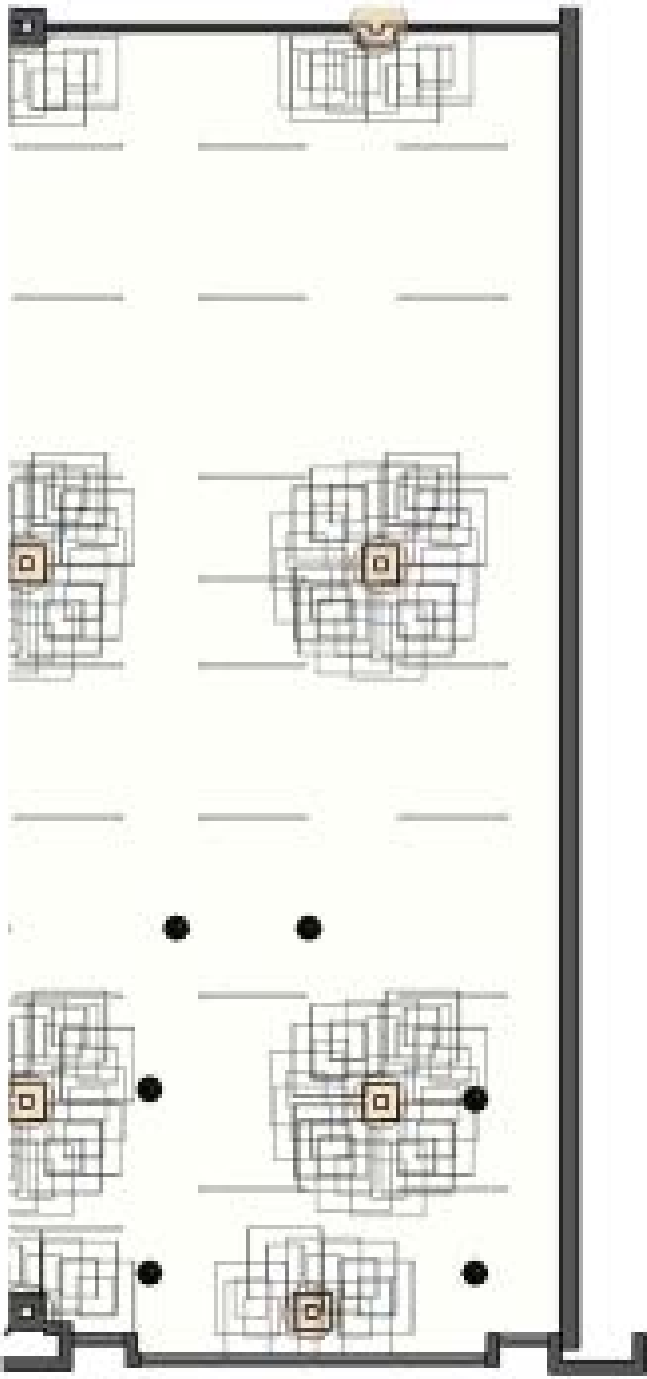
PALLETTES - ENTRY/HALLWAY



PLAY AREA - ENLARGED PLANS



LEVEL 1

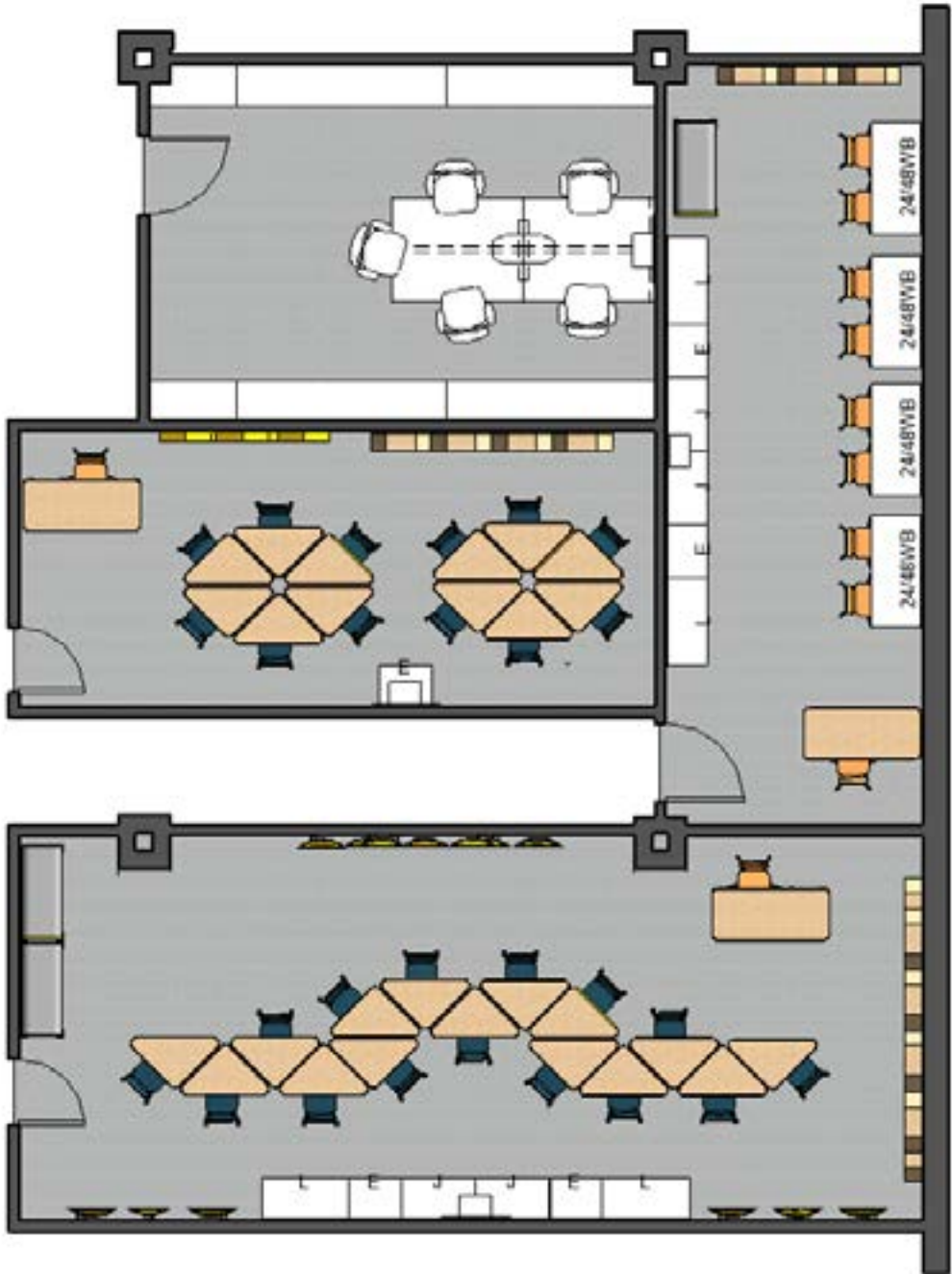


NOT TO SCALE

PLAY AREA - PRESPECTIVES

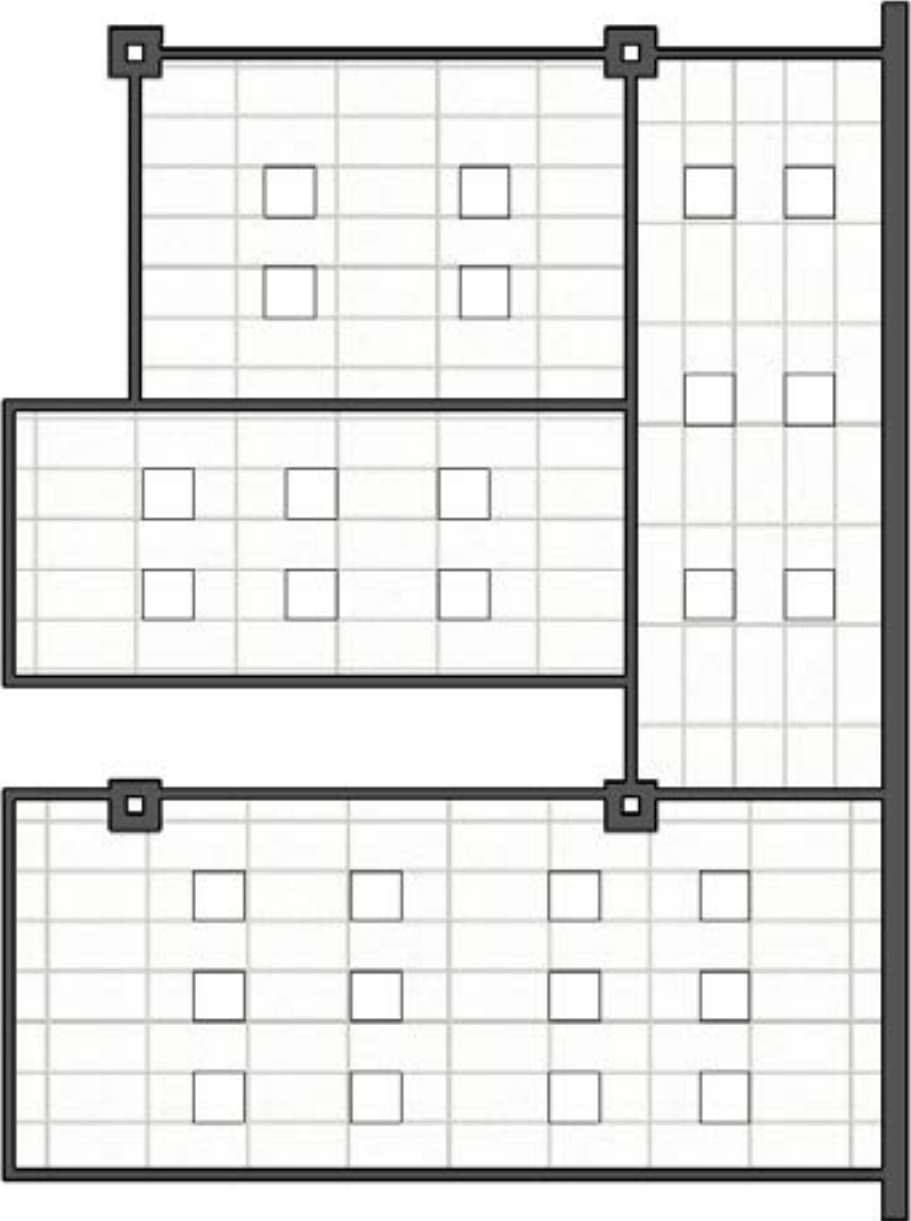


CLASSROOMS - ENLARGED PLANS



LEVEL 1

NOT TO SCALE



LEVEL 1

CLASSROOMS - PRESPECTIVES



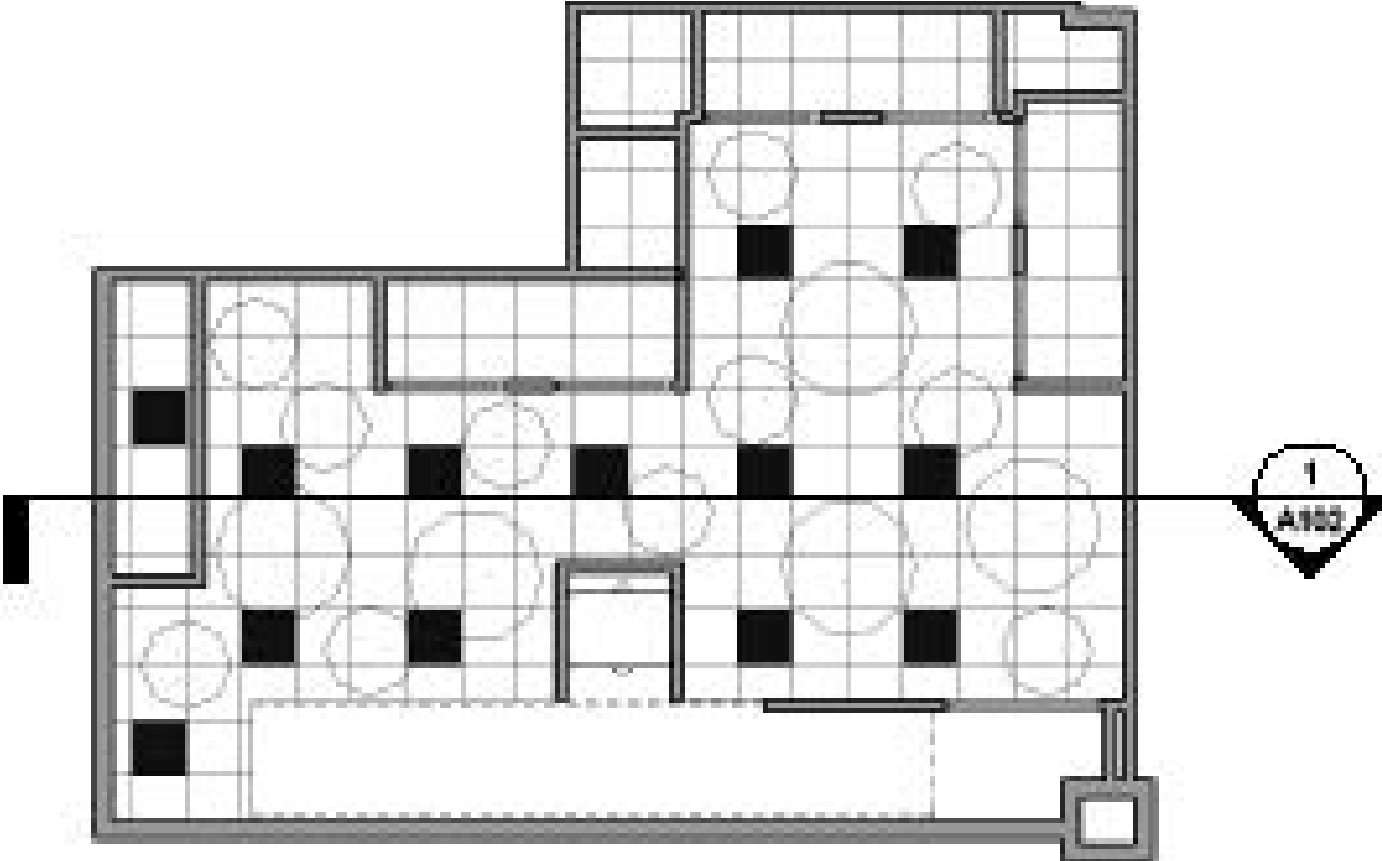
PALLETTs - CLASSROOMS



NAP ROOM - ENLARGED PLANS



LEVEL 1



LEVEL 1

NOT TO SCALE

NAP ROOM - PRESPECTIVE



PALLETTES - NAP ROOM



ENTERTAINMENT ROOM - ENLARGED PLANS



LEVEL 2 NOT TO SCALE

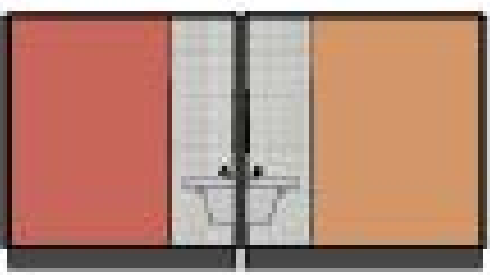
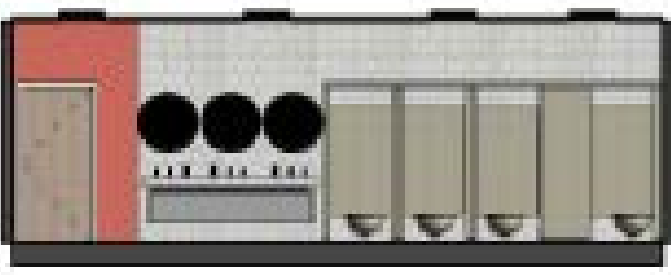
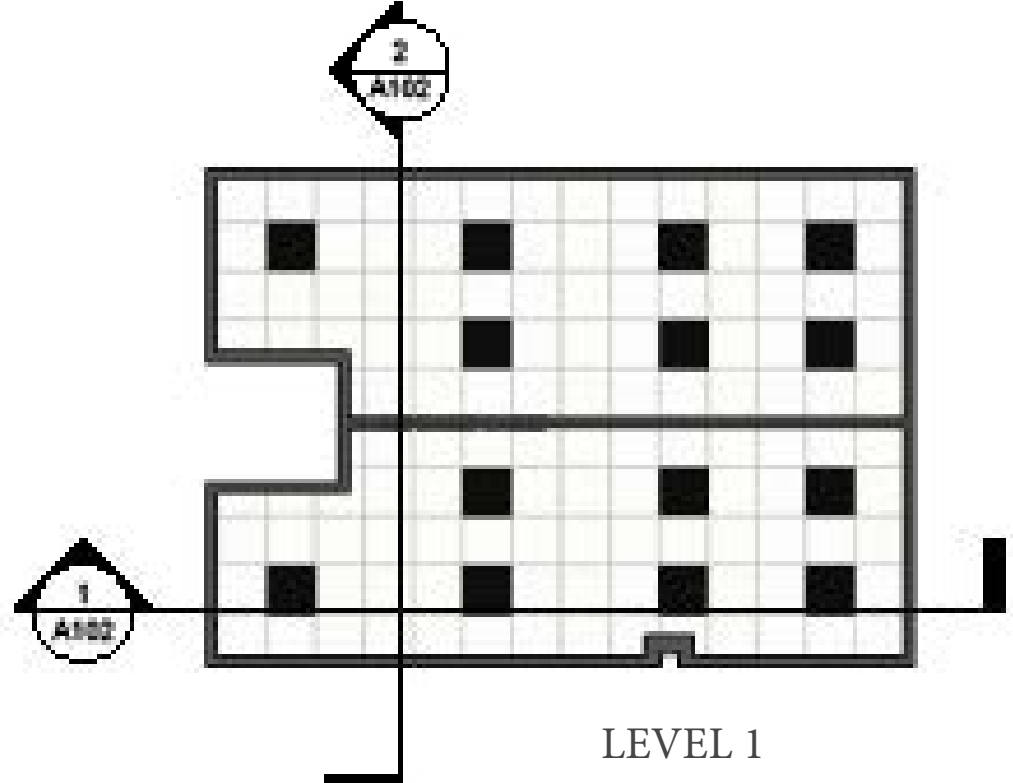
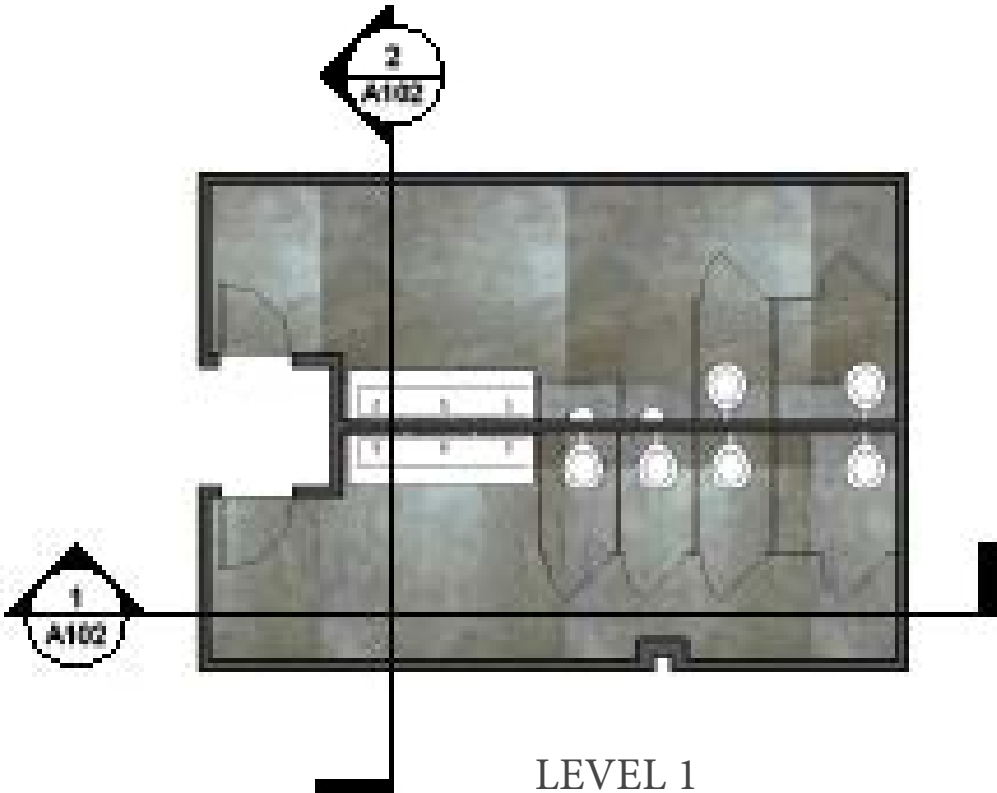
ENTERTAINMENT ROOM - PRESPECTIVE



PALLETTES - ENTERTAINMENT ROOM



RESTROOMS - SECTIONS & ENLARGED PLANS

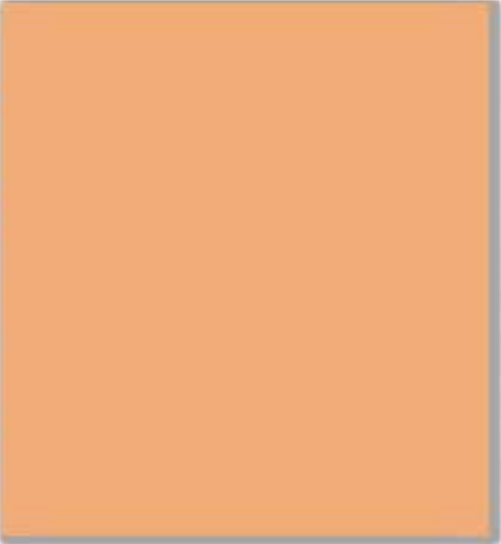
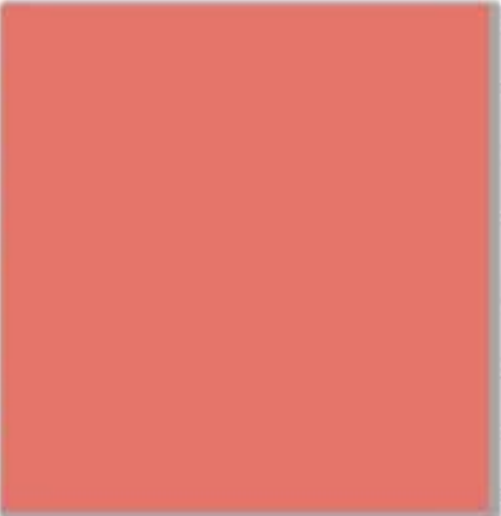


NOT TO SCALE

RESTROOMS - PRESPECTIVES



PALLETTES - RESTROOMS




SPECS - THEATER ROOM

SECTION I: Theater Room

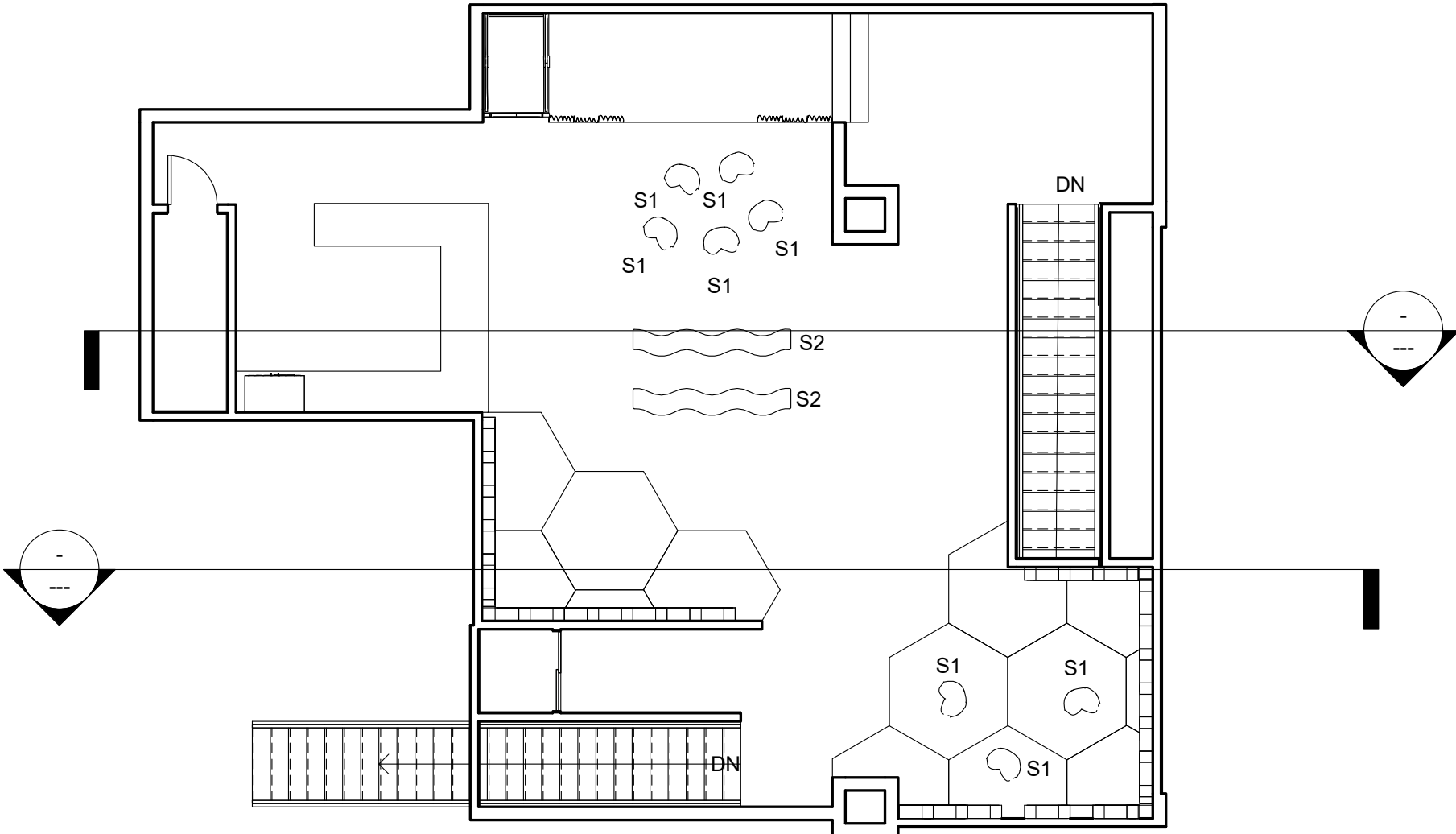
I.51 Bean Bag

Fatboy	Comfy Sacks
<p>Picture</p> 	<p>Picture</p> 
<p>Item Name: The Original Stonewashed Item No.: IAA17 Description: If you're going to be comfortable, why not go all the way with me? I'm made of new pillowy soft stonewashed fabric and signature Fatboy® filling. Your couch might start to feel a little neglected.</p> <ul style="list-style-type: none"> • Fun and multi-functional lounge bean bag from Fatboy®; for reading, watching TV, cuddling, and relaxing. Your couch might start to feel a little neglected! • Soft and durable outer fabric made from 100% stonewashed cotton. • Filled with virgin polystyrene beads. • Available in wide array of beautiful colors; cover is machine washable at 86°F. <p>Weight: 15 lb Dimensions: 55"H X 65"W X 8"D Options: ORISTW-BLK, ORISTW-RED, ORISTW-SVGRY, ORISTW-BLU, ORISTW-GRY, ORISTW-LGR, ORISTW-ORG, ORISTW-TPE, ORISTW-SND, ORISTW-DKBLU Environmental Certifications: Not listed Recycled or Recyclable Price: \$289</p>	<p>Item Name: 3 Ft Sack Item No.: Not listed Description: The 3 ft Comfy Sack is made for kids and teens alike. Small enough to fit in many kids rooms but large enough to comfortably seat growing teens. Another great feature on ALL Comfy Sacks is that the inner liner is equipped with a safety break-away zipper. Once the zipper is closed you simply twist the zipper off which locks the zipper in place. To open the liner to access the foam you simply insert a paper clip which disengages the zipper lock and allows you to open and close the liner. We do this to help prevent small children from accessing and therefore possibly eating the foam. We sell many of our products to families with young children and it is very important to us to take as many precautions to protect them the best way we can. Our unique design allows for a safer sack to be enjoyed by the whole family and even the littlest ones (pets too!).</p> <p>Weight: 32 lbs Dimensions: 36"H X 36" W X 24" D Options: Black, Cinnabar, Charcoal, Navy Blue, Chocolate, Olive, Camel, Cocoa, Purple, Royal Blue, Aqua Marine, Magenta, Lime, Lemon, Tangerine Environmental Certifications: Not Listed Recycled or Recyclable Price: \$159</p>

I.52 Bench

Coalesse	OFS
<p>Picture</p> 	<p>Picture</p> 
<p>Item Name: Ripple Upholstered Flat Seat Bench Item No.: 490-B96HRZ Description: A sculptural, fully upholstered bench in two orientations for flat or wave seating. Triple and single seat lengths. Height adjustable leveling glides with stainless steel finish.</p> <p>Single and triple seat bench. Flat or wave seat orientation.</p> <p>Weight: Not listed Dimensions: 19.25"H X 97"W X 19.25"D Options: Optional contrasting textilesSCS Indoor Advantage™ Gold Certified. Optional Acrylic Backer Environmental Certifications: Optional contrasting textilesSCS Indoor Advantage™ Gold Certified. Recycled or Recyclable Price: \$2,319</p>	<p>Item Name: Rowen Item No.: 83040 Description: Elegant and welcoming don't always go hand-in-hand. For Rowen, designer Brian Graham took inspiration from architecture and landscapes to create a graceful, inviting form that evokes a sense of beauty and peace without sacrificing warmth. People need environments that calm and inspire, and Rowen helps create those spaces. The thin, faceted legs create a sense of lightness and poise, while the softer shapes of the cushions provide comfort. Plywood/hardwood frame. Sinuous springs in seat. Fully upholstered. Square steel metal leg.</p> <p>Weight: 45 lbs Dimensions: 17.5"H X 72"W X 24"D Options: Optional round turned post wood leg. Standard walnut finish options on walnut. Select standard finish options on ash. Ferrule in standard or studio powder coats. Metal leg in standard or studio powder coats. Environmental Certifications: Recycled or Recyclable Price: \$4,400</p>

SPECS - THEATER ROOM



Furniture	Quantity
S1	8
S2	2

SPECS - PLAY AREA

II.T1 Picnic Table

Extremis

Picture



Item Name: Marina-Picnic, 2 Legs

Item No.: AXTMMARINAPIC2

Description: The Marina is available without the attached seating benches to create a long dining table. The unique thing about this range is that you can put together your own personal table arrangement. The Marina long dining table and the Marina outdoor picnic table are not only unlimited in length, you can also extend their architectural lines from your terrace to your dining room and from your office workspace to your office canteen. Whether you use them indoors or outdoors, these tables blur the boundaries between work and play and turn an individual space into a shared space. This range is specifically designed to create unity and simplicity in your home or project

Weight: 77 lb

Dimensions: 30"H X 167"W X 130"D

Options: Floor fastening, L330 CM Profile 2 Leg, L165 CM 5 Profile 2 Leg, L165 CM 6 Profile 2 Leg, L220 CM 5 Profile 2 Leg, L220 CM 6 Profile 2 Leg, L275 CM 5 Profile 2 Leg, L275 CM 6 Profile 2 Leg, L330 CM 6 Profile 2 Leg

Environmental Certifications: BIFMA - No Recycled or Recyclable

Price: \$6,560

Uline

Picture



Item Name: Recycled Plastic Picnic Table 6' A-Frame

Item No.: H-2563

Description: Virtually maintenance free! Recommended for warehouse patios, campgrounds, schools and parks. 100% recycled UV-protected plastic won't rot, splinter or crack. Withstands harsh weather. Natural-looking wood material never needs sanding, sealing, painting or staining. Durable 2" thick planks predrilled for easy assembly.

Hex - Best selling picnic table.

ADA Hex - Accommodates 1 wheelchair and 4 adults.

Rectangle - Convenient walk-through design.

A-Frame - Classic picnic table style.

Mounting hardware sold separately.

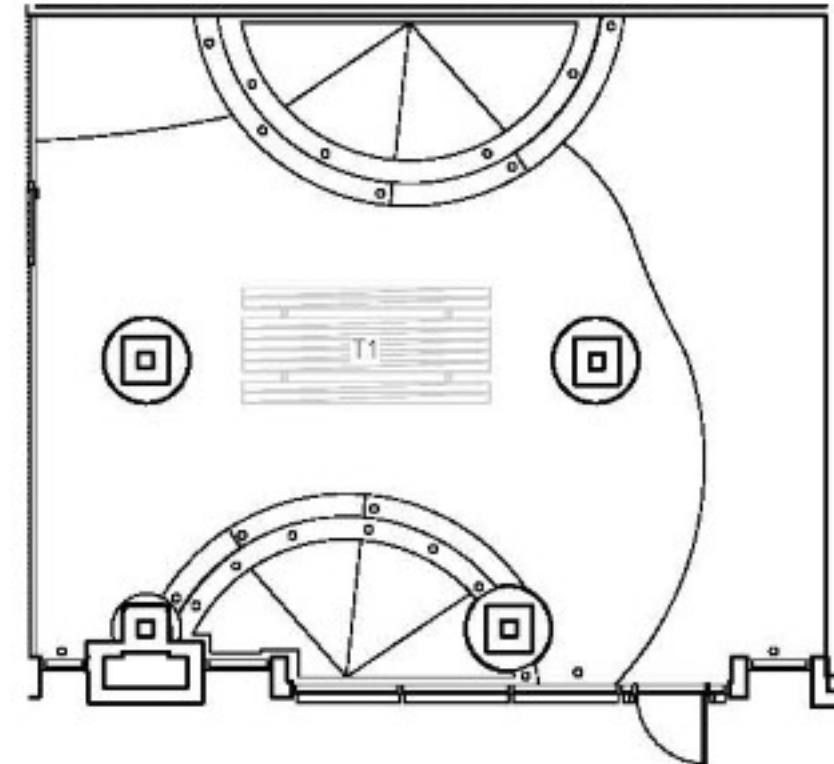
Weight: 260 lbs

Dimensions: 72"H X 61" W X 30" D

Options: 46" Hex, 46" ADA Hex, 6' Rectangle, 8' Rectangle, 6' A-Frame, 8' A-Frame

Environmental Certifications: Not Listed Recycled or Recyclable

Price: \$775



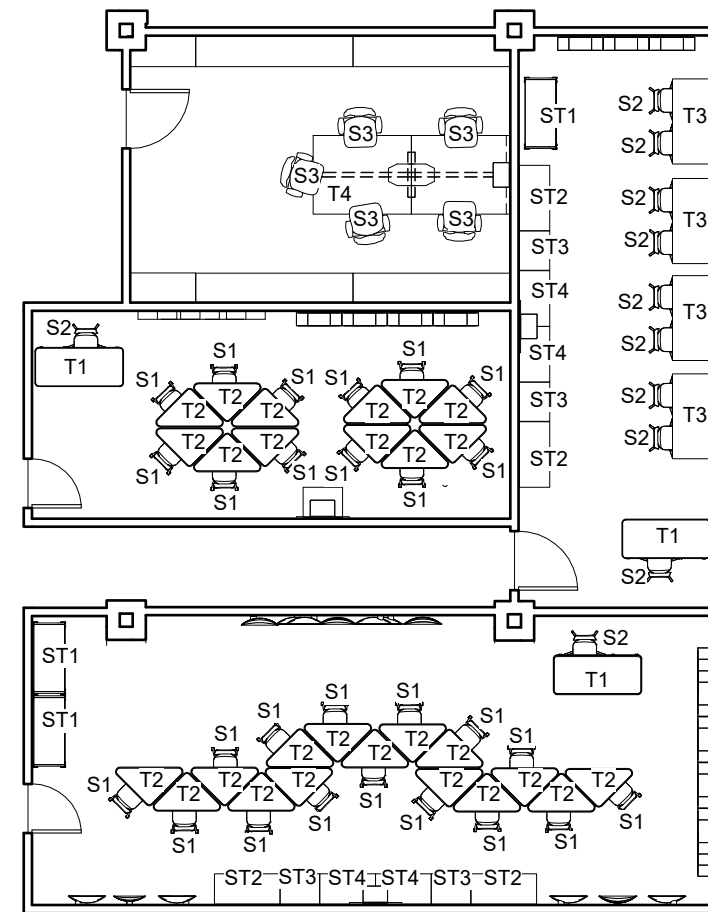
Furniture	Quantity
T1	1

SPECS - CLASSROOMS

SECTION III: Classrooms

1.S1 Students' Chairs

Smith System	Smith System
<p>Picture</p> 	<p>Picture</p> 
<p>Item Name: Flavors Mobile Stack Chair Item No.: 11855 Description: The four-position chair allows student to sit comfortably facing front, either side or rear. A flexing seat back provides support and allows student to turn with less restriction. Mobile stack chair is standard with smooth rolling casters. Flat seat pan with waterfall front edge.</p>	<p>Item Name: Groove Cantilever Chair Item No.: 33879 Description: The FRAME is constructed of strong 1.5" x 0.75" 14-gauge tubing that is chrome plated or powder painted for long lasting, durable finish. The shell is attached to 16-gauge brackets via a metal to metal steel riveted connection</p>
<p>Weight: 11 lbs Dimensions: 19.5" x 18" x 16" Options: Available in either a 14" or 16" 'B-Shell' as well as an 18" 'A-Shell. Available in 18 colors, frame in Chrome and Platinum. Environmental Certifications: GREENGUARD Gold Certification Recycled or Recyclable</p>	<p>Weight: 260 lbs Dimensions: 18"H X 20" W X 19" D Options: Chair shell comes in 17 colors and frame in Chrome or Platinum. Environmental Certifications: GREENGUARD Gold Certification Recycled or Recyclable</p>
Price: \$139.00	Price: \$249.00



Furniture	Quantity
ST1	3
ST2	4
ST3	4
ST4	4
T1	3
T2	27
T3	4
T4	1
S1	27
S2	11
S3	5

SPECS - CLASSROOMS

2.S2 Computer Lab Chairs/Teacher Chairs

Picture



Item Name: Flavors Adjustable Chair

Item No.: 11840

Description: The Cascade Teacher Desk offers a stable, mobile and versatile workspace with integrated wireway and modesty panel plus the unique capabilities of

Cascade storage. It offers a scalable solution for organization, storage and distribution of learning

Weight: 129 Lbs

Dimensions: 24" D x 54"W x 30.25"H

Options: The PEDESTAL is constructed of fully welded 20

gauge steel components and comes standard with 3" plate casters. Each plate caster takes 4 machine screws to fasten to the ped. The single TOTE PEDESTAL is configured with (2) 3" and (1) 12" translucent totes and a locking door for security, on the right-hand side of the desk. The leg is 1 5/8" x 10" double wall panel of 12-,14- and 18-gauge steel with rounded edges and a 16-gauge steel tube 1 3/4" x 2" base. The 18-gauge steel modesty panel is mechanically fastened to the pedestals and to the laminated top.

Environmental Certifications: GREENGUARD Gold Certification

Recycled or Recyclable

Price \$869.00

Picture



Item Name: In2it Adjustable Chair

Item No.: 00536

Description: The Cascade Teacher Desk offers a stable, mobile and versatile workspace with integrated wireway and modesty panel plus the unique capabilities of

Cascade storage. It offers a scalable solution for organization, storage and distribution of learning

Weight: 130 Lbs

Dimensions: 24"D x 60"W x 30.25"H

Options: The PEDESTAL is constructed of fully welded 20

gauge steel components and comes standard with 3" plate casters. Each plate caster takes 4 machine screws to fasten to the ped. The single TOTE PEDESTAL is configured with (6) 3" translucent totes on the left-hand side of the desk. The leg is 1 5/8" x 10" double wall panel of 12-,14- and 18-gauge steel with rounded edges and a 16-gauge steel tube 1 3/4" x 2" base. The 18-gauge steel modesty panel is mechanically fastened to the pedestals and to the laminated top

Environmental Certifications: GREENGUARD Gold Certification

Recycled or Recyclable

Price \$982.00

3.T1 Teachers' Desk

Picture



Item Name: Cascade Teacher Desk – Single Pedestal

Item No.: 26150

Description: The Cascade Teacher Desk offers a stable, mobile and versatile workspace with integrated wireway and modesty panel plus the unique capabilities of

Cascade storage. It offers a scalable solution for organization, storage and distribution of learning

Weight: 129 Lbs

Dimensions: 24" D x 54"W x 30.25"H

Options: The PEDESTAL is constructed of fully welded 20

gauge steel components and comes standard with 3" plate casters. Each plate caster takes 4 machine screws to fasten to the ped. The single TOTE PEDESTAL is configured with (2) 3" and (1) 12" translucent totes and a locking door for security, on the right-hand side of the desk. The leg is 1 5/8" x 10" double wall panel of 12-,14- and 18-gauge steel with rounded edges and a 16-gauge steel tube 1 3/4" x 2" base. The 18-gauge steel modesty panel is mechanically fastened to the pedestals and to the laminated top.

Environmental Certifications: GREENGUARD Gold Certification

Recycled or Recyclable

Price \$869.00

Picture



Item Name: Cascade Teacher Desk – P-Top

Item No.: 26140

Description: The Cascade Teacher Desk offers a stable, mobile and versatile workspace with integrated wireway and modesty panel plus the unique capabilities of

Cascade storage. It offers a scalable solution for organization, storage and distribution of learning

Weight: 130 Lbs

Dimensions: 24"D x 60"W x 30.25"H

Options: The PEDESTAL is constructed of fully welded 20

gauge steel components and comes standard with 3" plate casters. Each plate caster takes 4 machine screws to fasten to the ped. The single TOTE PEDESTAL is configured with (6) 3" translucent totes on the left-hand side of the desk. The leg is 1 5/8" x 10" double wall panel of 12-,14- and 18-gauge steel with rounded edges and a 16-gauge steel tube 1 3/4" x 2" base. The 18-gauge steel modesty panel is mechanically fastened to the pedestals and to the laminated top

Environmental Certifications: GREENGUARD Gold Certification

Recycled or Recyclable

Price \$982.00

SPECS - CLASSROOMS

4.T2 Students' Desk

Picture



Item Name: Interchange Wing Desk

Item No.: 03095

Description: This compact, contemporary desk is designed for collaborative learning and provides sleek looks, solid functionality and great flexibility. Includes a backpack peg to keep backpacks off the floor. It can be arranged in countless ways for groups of all sizes. Its work surface provides ample space for individual or group work of all kinds

Weight: 46 lbs

Dimensions: 23.5" D x 41" W x 22"-34" H

Options: Elemental Student Desks come with a custom leg set

that adjusts from 22.5"- 29.5" in 1" increments. The

leg set is available in Platinum only.

Optional casters

can be added - height maintains same adjustable

range of 22.5" to 29.5" Order it in any of 14 standard laminate colors, 20 edge colors and Black or Platinum frame.

Environmental Certifications: GREENGUARD Gold Certification

Recycled or Recyclable

Price \$242.00

Picture



Item Name: Interchange Diamond Open Front Desk

Item No.: 04504

Description: This flexible, contemporary desk provides both sleek looks and solid functionality. Its space-saving desktop provides ample space for projects allows the desk to create compact groups of up to six. It offers the convenience of a built-in Bookbox, and can be ordered in any of 14 standard laminate colors

Weight: 50 lbs

Dimensions: 30"D x 34"W x 22"-32"H

Options: The Interchange Open Front Desk is available in both 3/4" and

1 1/4" thick work surface (see top & edge profiles. The sock style glide caps add

protection against scratching floors and provide stability on uneven surfaces with their 1" adjustable leveling glides.

Tabletop and legs are supported by one or more 2" x 3" channels with four breakovers for optimum strength

Environmental Certifications: GREENGUARD Gold Certification

Recycled or Recyclable

Price \$375.00

5.T3 Computer Lab Tables

Picture



Item Name: Elemental Nest and Fold

Item No.: NL2448

Description: Elemental® Nest & Fold Tables provide a stable, spacious work surface and contemporary appearance. They offer added utility when not in use through their easy mobility and compact storage.

Because they're part of an integrated line of tables and desking, they allow a consistent design scheme throughout the building or facility.

Weight: 59 lbs

Dimensions: 24"D x 48"W x 30"H

Options: Choose from 14 standard laminate tops and 20 standard edge colors. Frames available in platinum, charcoal, apple, cerulean and orange.

Environmental Certifications: GREENGUARD

Gold Certification

Recycled or Recyclable

Price \$699.00

Picture



Item Name: Planner Studio – 36"x72" Butcher Block

Item No.: 25212BUTCHER

Description: These sophisticated 29"h, 36"h and 40"h tables meet the needs of your Makerspace, without the pared down "shop class" aesthetics. The adaptive urban industrial style allows for crossover application in media centers, active learning spaces, common areas or any space that encourages collaboration and social learning.

Weight: 188 lbs

Dimensions: 36"D x 72"W x 40"H

Options: Can be paired with any of 5 color frames, Apple, Cerulean, Charcoal, Orange or Platinum. Butcher block top available in 36" x 72" size only.

Environmental Certifications: N/A

Recycled or Recyclable

Price \$1,745.00

SPECS - CLASSROOMS

6.ST1 Cascades

Picture



Item Name: Cascade Mid-Tower
Item No.: 811000000P

Description: Our Cascade Storage System allows educators to organize, store and distribute learning materials. These mobile storage units are highly customizable to hold items in a wide range of sizes and shapes – from sheets of paper to stuffed animals.

Weight: 125lbs

Dimensions: 19"D x 29"W x 61.4"H

Options: The optional DOORS include a secure and reliable

locking mechanism, which engages lock rods into the dome top and the base shelf. Doors also come with urethane ergonomic and modern door handles of your color choice. The fully hinged doors articulate 270 degrees, free of obstruction

Environmental Certifications: GREENGUARD Gold Certification

Recycled or Recyclable

Price \$1,599.00

Picture



Item Name: Cascade Nomad Cart
Item No.: 21900

Description: Featuring three shelves, the Cascade Nomad offers an open-shelf layout with easy access for maximizing storage in any classroom or library setting. The powder coated all steel construction maximizes durability guaranteeing many years of service. The Nomad unit has a maximum capacity of 800 lbs.

Weight: 128 lbs

Dimensions: 21"D x 43"W x 53"H

Options: The base shelf is attached to both end panels using four machine screw fasteners. Casters are 5" in diameter, with two locking. Optional glides are 3/8" threaded stem.

Environmental Certifications: GREENGUARD Gold Certification

Recycled or Recyclable

Price \$1,575.00

Herman Miller

7.ST2-4 Storage

Picture



Item Name: Nelson Basic Cabinet Serie
Item No.: JMS2

Description: Storage can be efficient and good-looking at the same time, and this system proves it. Designed for maximum usefulness and versatility, the cases and bases can be used equally well in living, dining, working, and sleeping areas

Weight: N/A

Dimensions: 18.5"D X 40"W X 39.5" H

Options: The chest-cabinet combinations that make up the Nelson Basic Cabinet Series are manufactured with a minimum number of standard dimensions, which will remain basic and ensure ongoing flexibility through the years. And even more components will be available in later reintroductions.

Environmental Certifications: N/A

Recycled or Recyclable

Price \$6,268.00

Smith System

Picture



Item Name: Filing Cabinet No. 1
Item No.: BD1FC1FILCAB

Description: Straighten up. This modern file pedestal gets the job done. A clean, powder coated steel exterior allows this unit to sit quietly in any environment, residential or commercial. It's so unassuming we named it "Filing Cabinet"

Weight: N/A

Dimensions: 24h x 15w x 21d

Options: Powder-coated steel
Locking casters

Full extension drawer slides

Accommodates standard letter and legal sized files

Ships fully assembled

Environmental Certifications: N/A

Recycled or Recyclable

Price \$4,199.00

SPECS - MEETING ROOM

SECTION IV: Meeting Room

I.T4 Meeting Table

Herman Miller

Picture



Item Name: Everywhere Table—Oval—Double 3-Column Base
Item No.: N/A
Description: Studying, working, videoconferencing, lunching—any activity that brings people together to engage with their work or one another can be centered around an Everywhere Table. The same kit of parts can be used to create a range of tables
Weight: N/A
Dimensions: 30" D X 48"W X 28.5" H
Options: The simplicity of Everywhere Tables lends a sense of cohesion and visual calm throughout a space. Tops and bases can be specified in a variety of finishes to complement any environment
Environmental Certifications: SCS Indoor Air Advantage Certified
 Recycled or Recyclable

Price: \$2,429.00

Smith System

Picture



Item Name: Interchange™ Half Boat Multimedia Table
Item No.: 04235
Description: Table lines flair to provide clear sightlines for multi-person viewing and participation in distance learning or other presentation applications. Large 72" long table. Ideal for conference rooms hosting multimedia applications.
Weight: 193 lbs
Dimensions: 88"-60"D x 72"W x 22"-34"H
Options: The predrilled top is standard at 1 1/4" thick and available in 3/4" thick option. Laminate and T-mold color and style options are listed below. Top is predrilled to attach to legs using included fasteners. Legs include a 1" adjustable leveling glide with a locking stop to provide stability on uneven floors.
Environmental Certifications: GREENGUARD Gold Certification
 Recycled or Recyclable

Price: \$1,125.00

2.S3 Chairs

Picture



Item Name: Groove Adjustable Height Stool
Item No.: 33842
Description: Immediately supportive and comfortable. Students can feel great and get to work, with less settle time. The ergonomic seat pan and subtle shell contours support movement in a working posture at a desk and sideways sitting. A gentle flex at the top of the shell opens the contours up for a reclining position.
Weight: 34 lbs
Dimensions: 28"D x 28"W x 22-32"H
Options: Chair shell comes in 17 colors and 5-star base in black only. The seat is secured to the FRAME with an 11-gauge plate mounted by 4 screws beneath the chair. The plate attaches to a pneumatic lift, which is a hydraulic cylinder that allows a full 360 degrees swivel.
Environmental Certifications: GREENGUARD Gold Certification
 Recycled or Recyclable

Price \$309.00

Picture



Item Name: Flavors Adjustable Stool
Item No.: 11842
Description: Offering an adjustable chair and stool version of Flavors Seating was a must. After all, when you combine the little bit of flex in the back of the chair together with the ability to custom fit the chair height, the result is a very comfortable chair
Weight: 34lbs
Dimensions: 28"D x 28"W x 22"-32"H
Options: The seat is secured to the FRAME with an 11-gauge plate mounted by 4 screws beneath the chair. The plate attaches to a pneumatic lift, which is a hydraulic cylinder that allows a full 360 degrees swivel. It comes with black nylon base with a 28.5" diameter 5-star design and in a choice of 2" soft tread casters or glides
Environmental Certifications: GREENGUARD Gold Certification
 Recycled or Recyclable

Price \$409.00

SPECS - NAP ROOM

V.S1 Nap Mats

Furniture-4Kids

Picture



Item Name: Mahar Nap Cots
 Item No.: MMC-6Pack
 Description: Mahar Rest Time Preschool & Daycare Cots are preferred by owners and parents who demand the most from their purchasing dollars. Leg Corners are made of high impact polypropylene plastic. Available in 10 different colors. So strong, we guarantee them for the life of the cot. Frame of bend-proof, powder-coated, 18 gauge cold-formed steel!
 Sturdy enough for use with children up to 80 lbs.!
 Cover is made of Texron; a non-sag, open weave, extremely durable fabric that meets the

Weight: 7 lb
 Dimensions: 5"H X 52"W X 22 8"D
 Options: BL/MMC-500T, GY/MMC-500T, NV/MMC-500T, TA/MMC-500T, BL/MMC-502T, GY/MMC-502T, NV/MMC-502T, TA/MMC-502T, BL/MMC-503T, GY/MMC-503T, NV/MMC-503T, TA/MMC-503T, BL/MMC-504T, GY/MMC-504T, NV/MMC-504T, TA/MMC-504T

Environmental Certifications: Not listed

Recycled or Recyclable: Not listed

Price: \$33.33

Olee Sleep

Picture



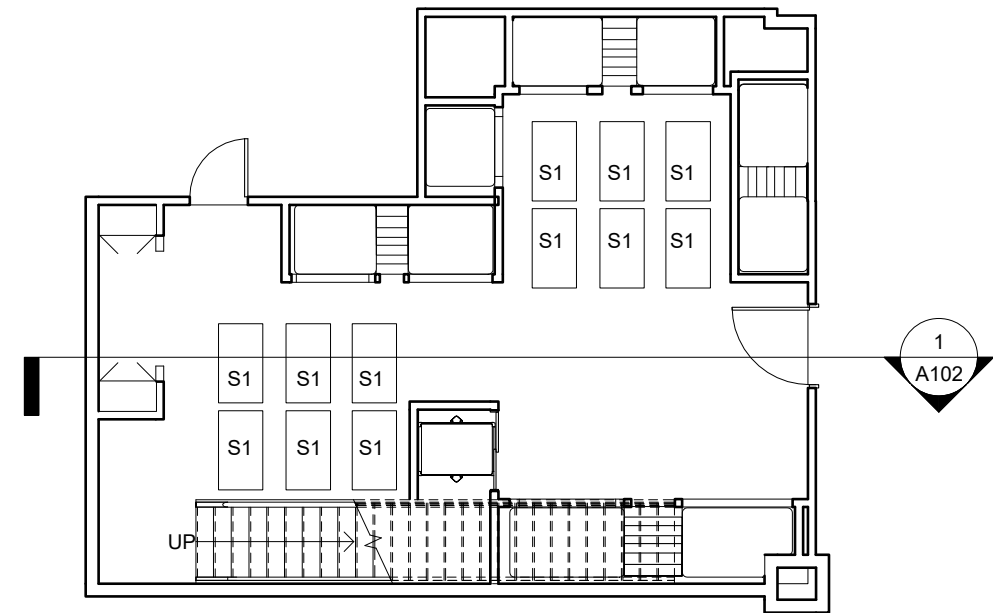
Item Name: Tri-Folding Memory Foam Topper
 Item No.: VC04TM025-N
 Description: Olee Sleep 4 inch tri-folding memory foam mattress is the ideal option for visitors, sleepovers, car trips, camping or dorm room bed. Portable and comfortable mattress, no pain in the back or neck when people sleep on it. Complete with supportive memory foam mattress providing soothing sleep

Weight: 11.9 lbs
 Dimensions: 4"H X 75" W X 25" D
 Options: Blue, Gray

Environmental Certifications: Not Listed

Recycled or Recyclable

Price: \$48.58



Furniture	Quantity
S1	12

FURNITURE BUDGET

Totals		Option 1	Option 2
Theater Room			
	Bean Bag Chairs	\$ 289.00	\$ 159.00
	Bench	\$ 2,319.00	\$ 4,400.00
Play Room			
	Picnic Table	\$ 6,560.00	\$ 775.00
Classroom			
	Student Chairs	\$ 139.00	\$ 249.00
	Teacher Chairs	\$ 263.00	\$ 333.00
	Teacher Desks	\$ 869.00	\$ 982.00
	Student Desks	\$ 242.00	\$ 375.00
	Computer Lab Tables	\$ 699.00	\$ 1,745.00
	Cascades	\$ 1,599.00	\$ 1,575.00
	Storage	\$ 6,268.00	\$ 4,199.00
Meeting Room			
	Meeting Table	\$ 2,429.00	\$ 1,125.00
	Chairs	\$ 309.00	\$ 409.00
Nap Room			
	Nap Mats	\$ 33.33	\$ 48.58
TOTALS		\$ 22,018.33	\$ 16,374.58