



*H*ILTON *G*ARDEN *T*NN

A PROPOSED DESIGN PROJECT BY
EDWARD THATCH
DESIGN & CO.



IN COLLABORATION WITH
CLARENDON PROPERTIES

T ABLE OF C ONTENTS

3 FURNITURE AND
CIRCULATION PLANS


36 DESIGN SKETCHES

69 LIGHT FIXTURE TYPES

74 FURNITURE AND PALETTES

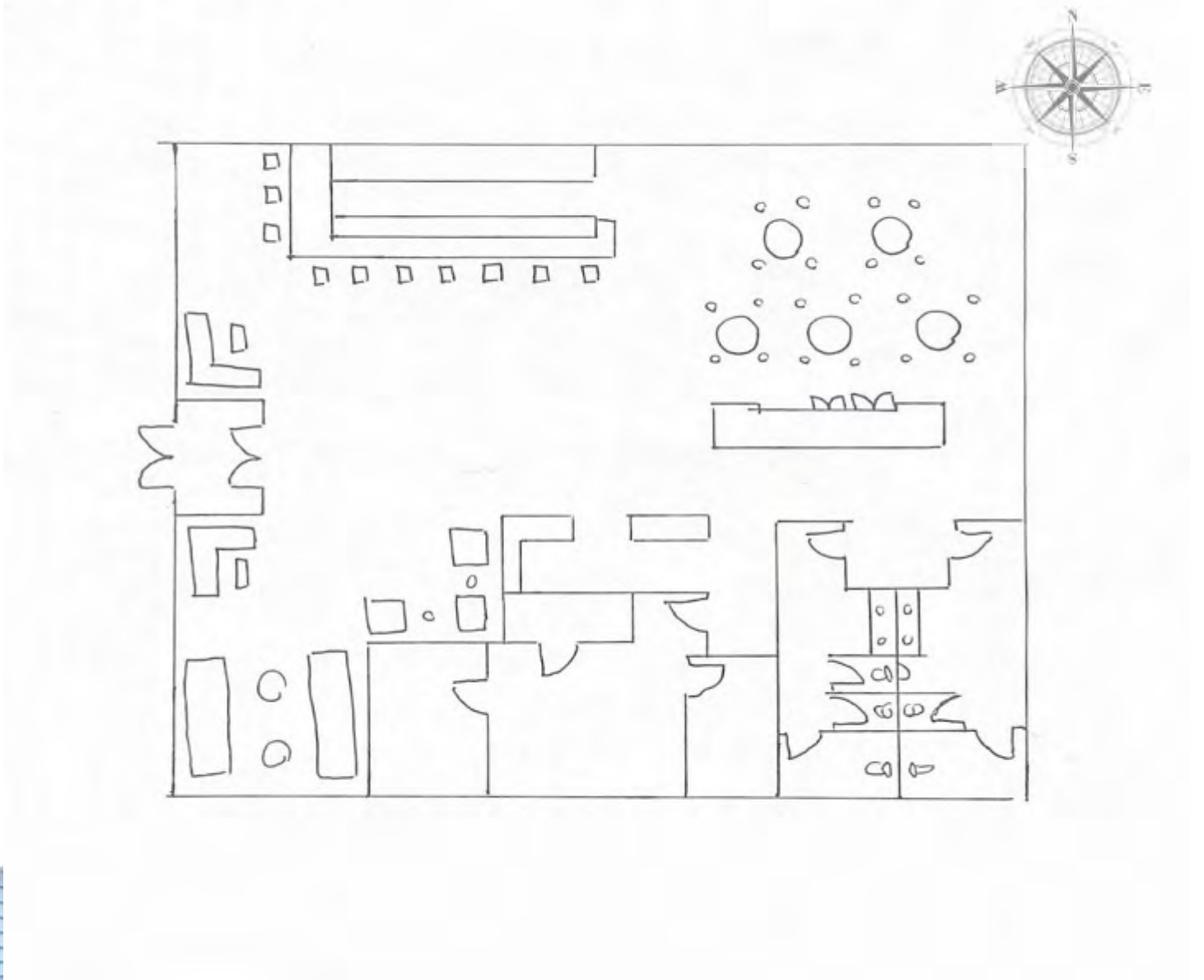
83 DESIGN
STATEMENT AND
CHALLENGE
SOLUTION





**FURNITURE
AND
CIRCULATION
PLANS**

Lobby FURNITURE PLAN 1

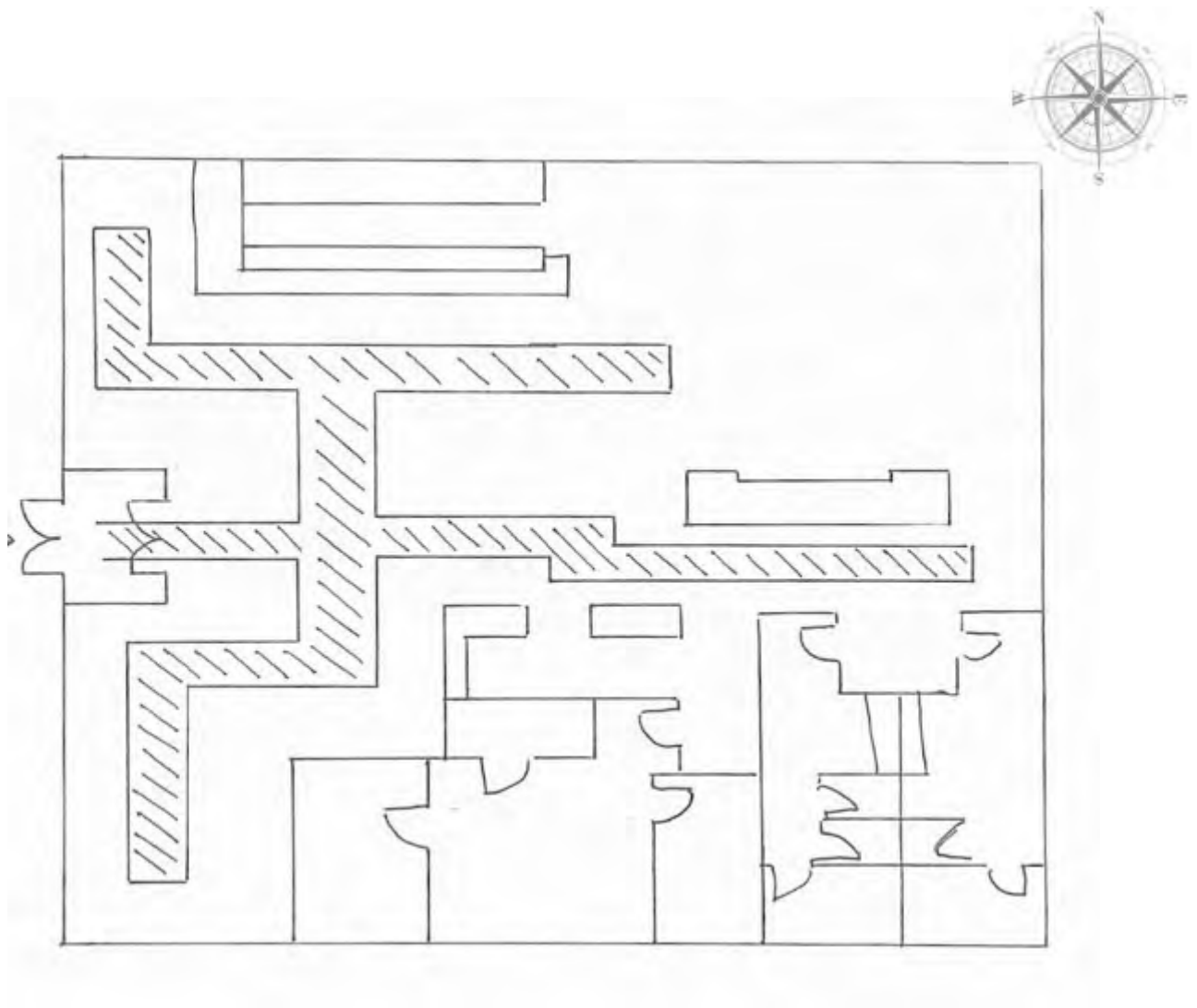


LIZABETH BROWN
PROJECT MANAGER





LOBBY CIRCULATION PLAN 1

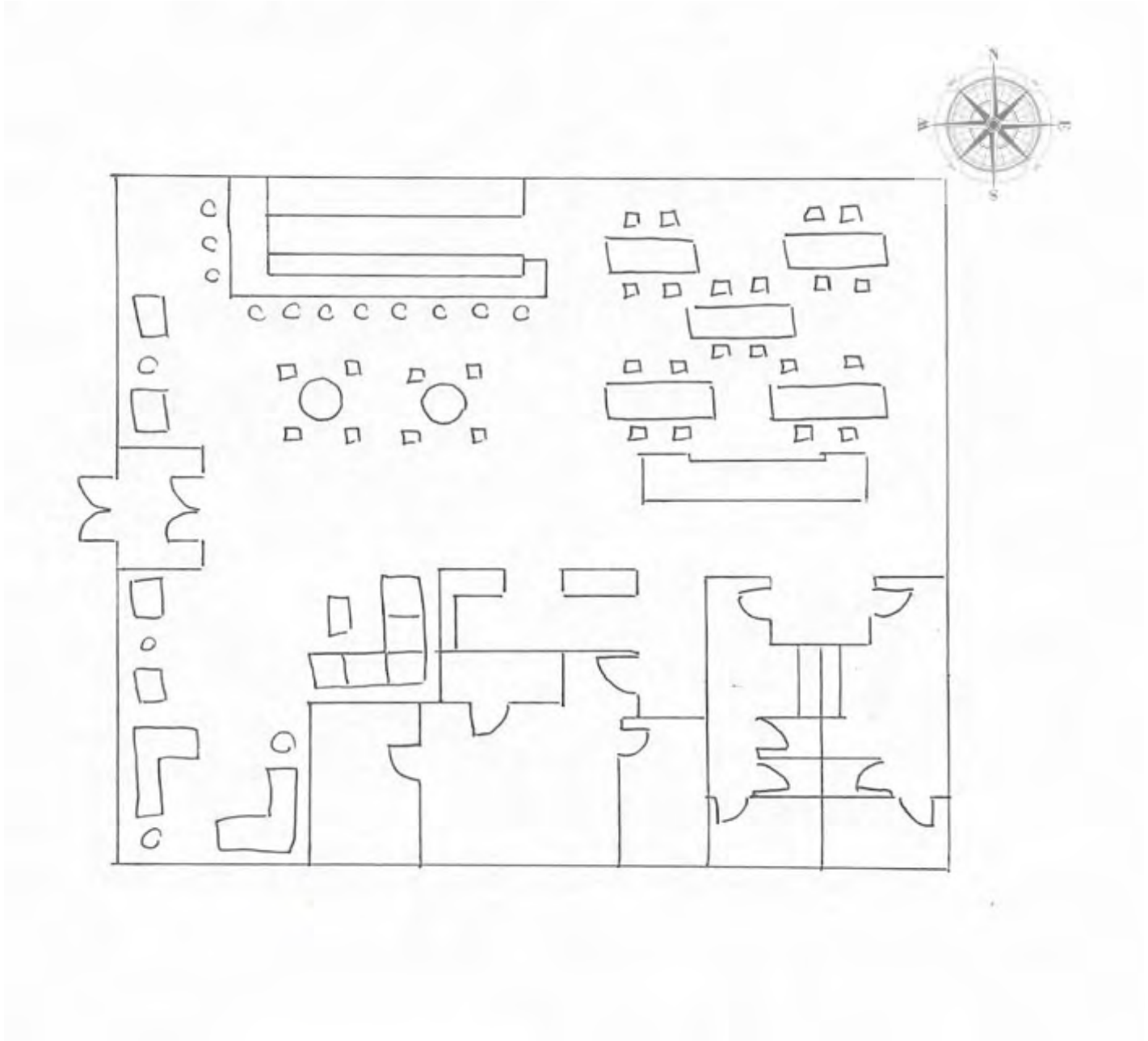


LIZABETH BROWN
PROJECT MANAGER





LOBBY FURNITURE PLAN 2

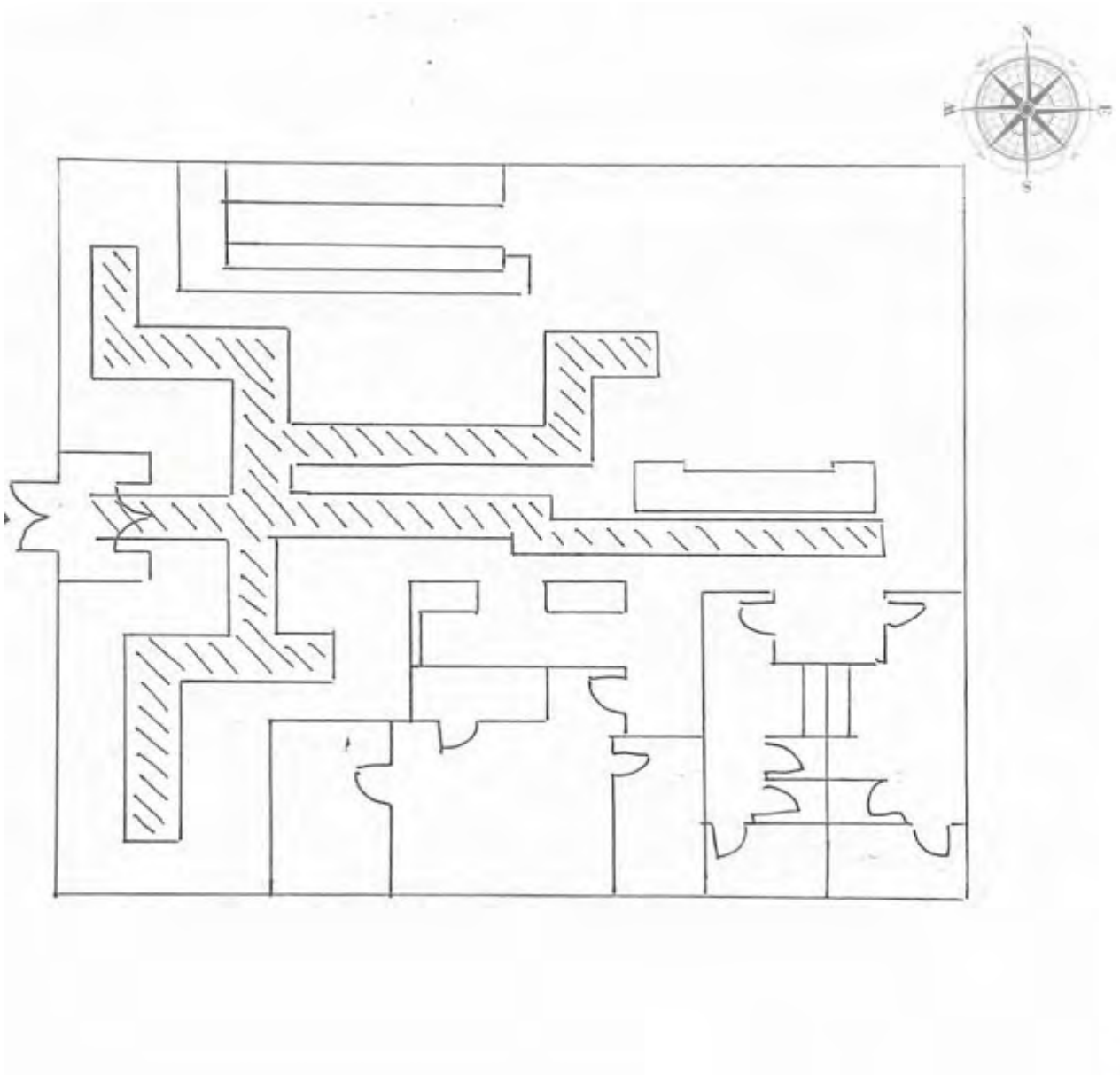


LIZABETH BROWN
PROJECT MANAGER





**LOBBY
CIRCULATION PLAN 2**

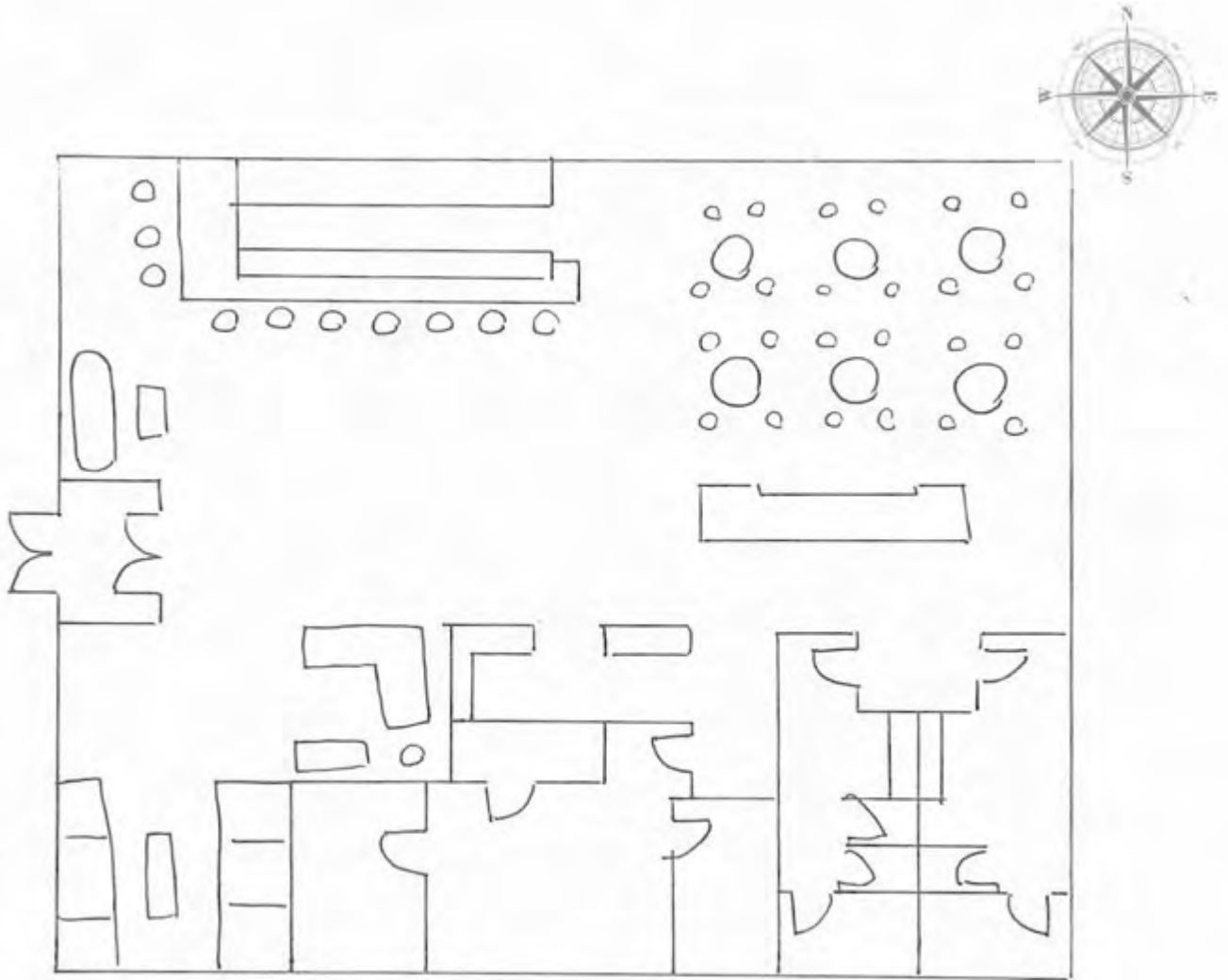


LIZABETH BROWN
PROJECT MANAGER





LOBBY FURNITURE PLAN 3

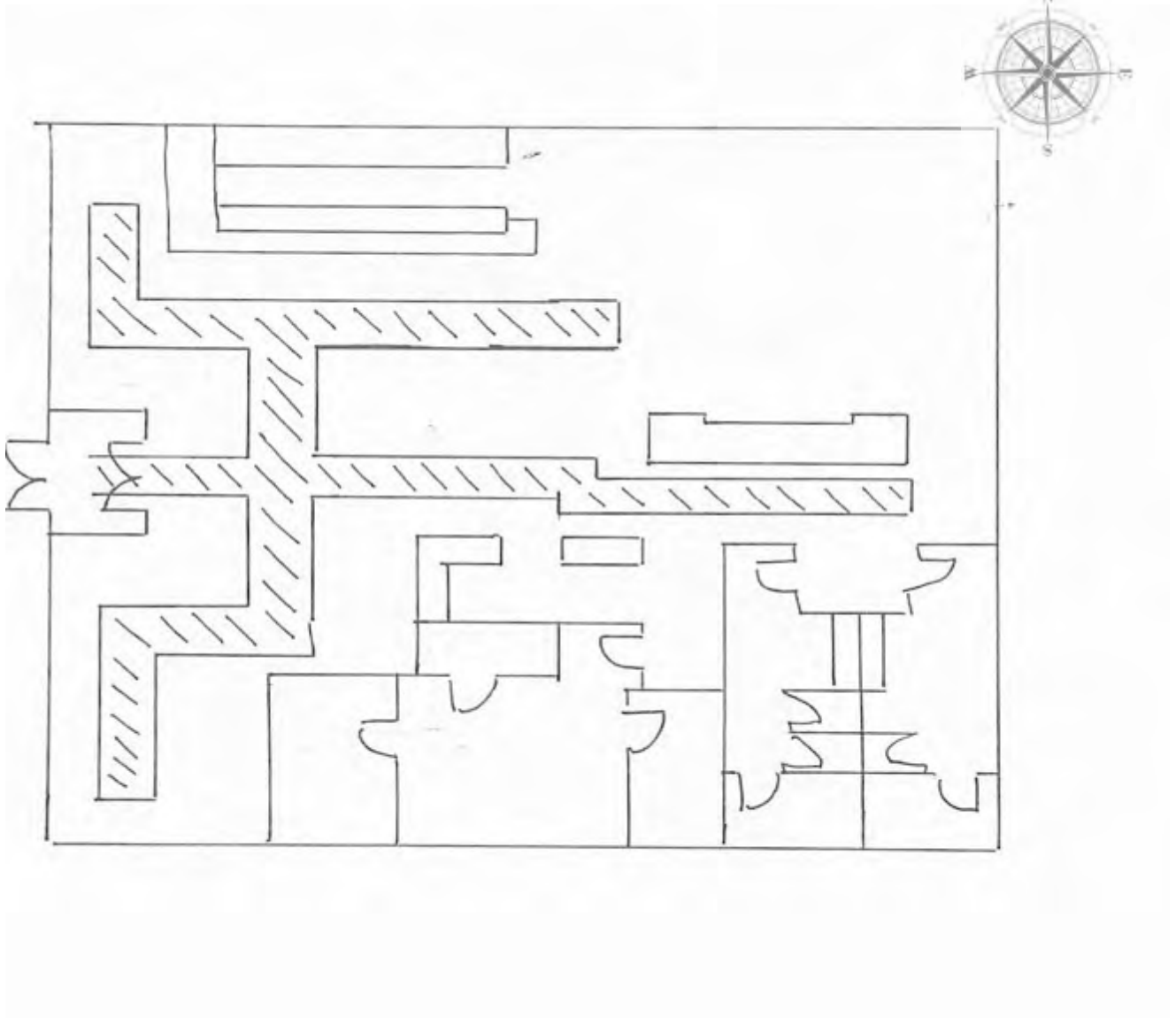


LIZABETH BROWN
PROJECT MANAGER





LOBBY CIRCULATION PLAN 3

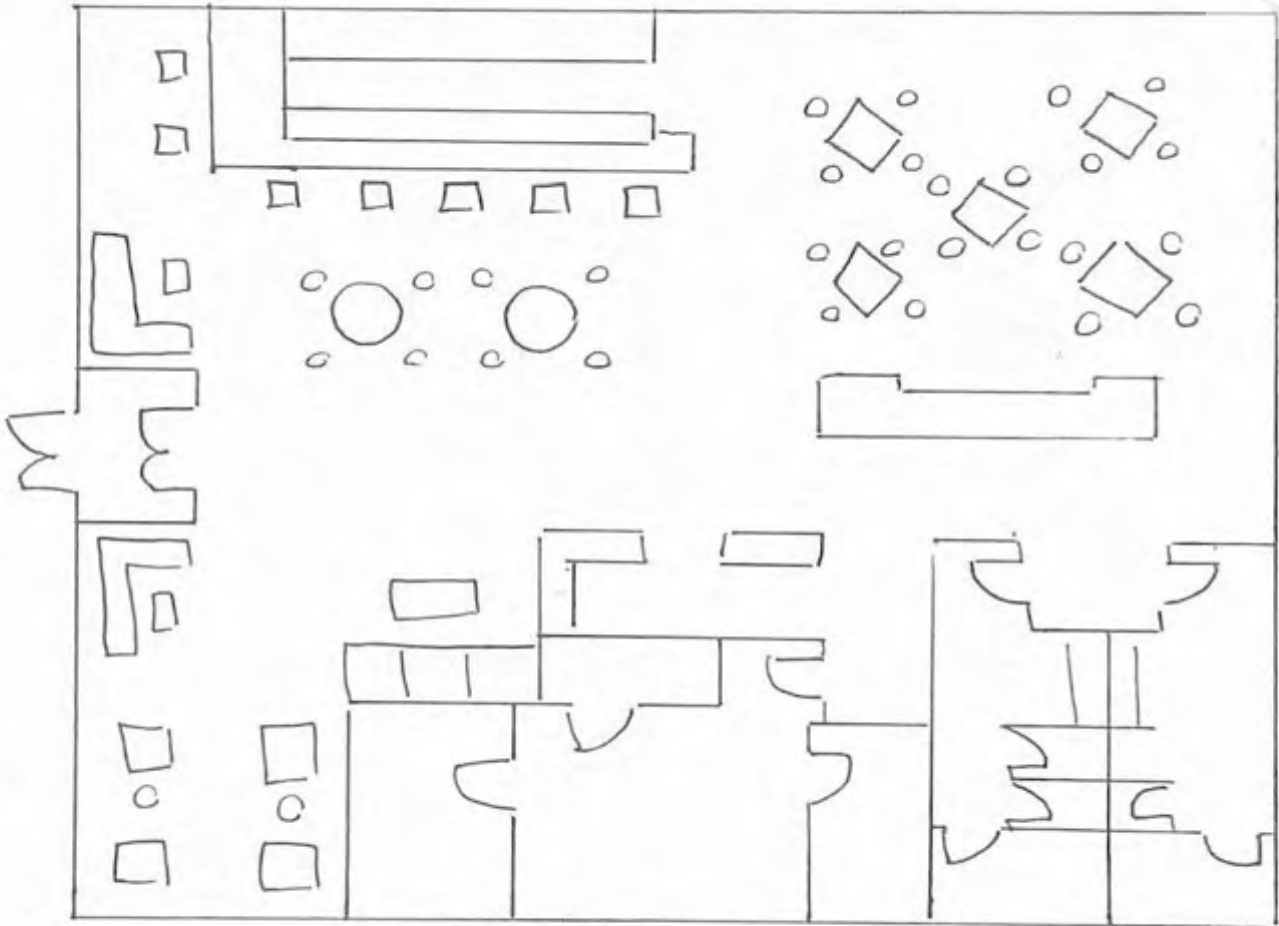


LIZABETH BROWN
PROJECT MANAGER





LOBBY
FURNITURE PLAN 4

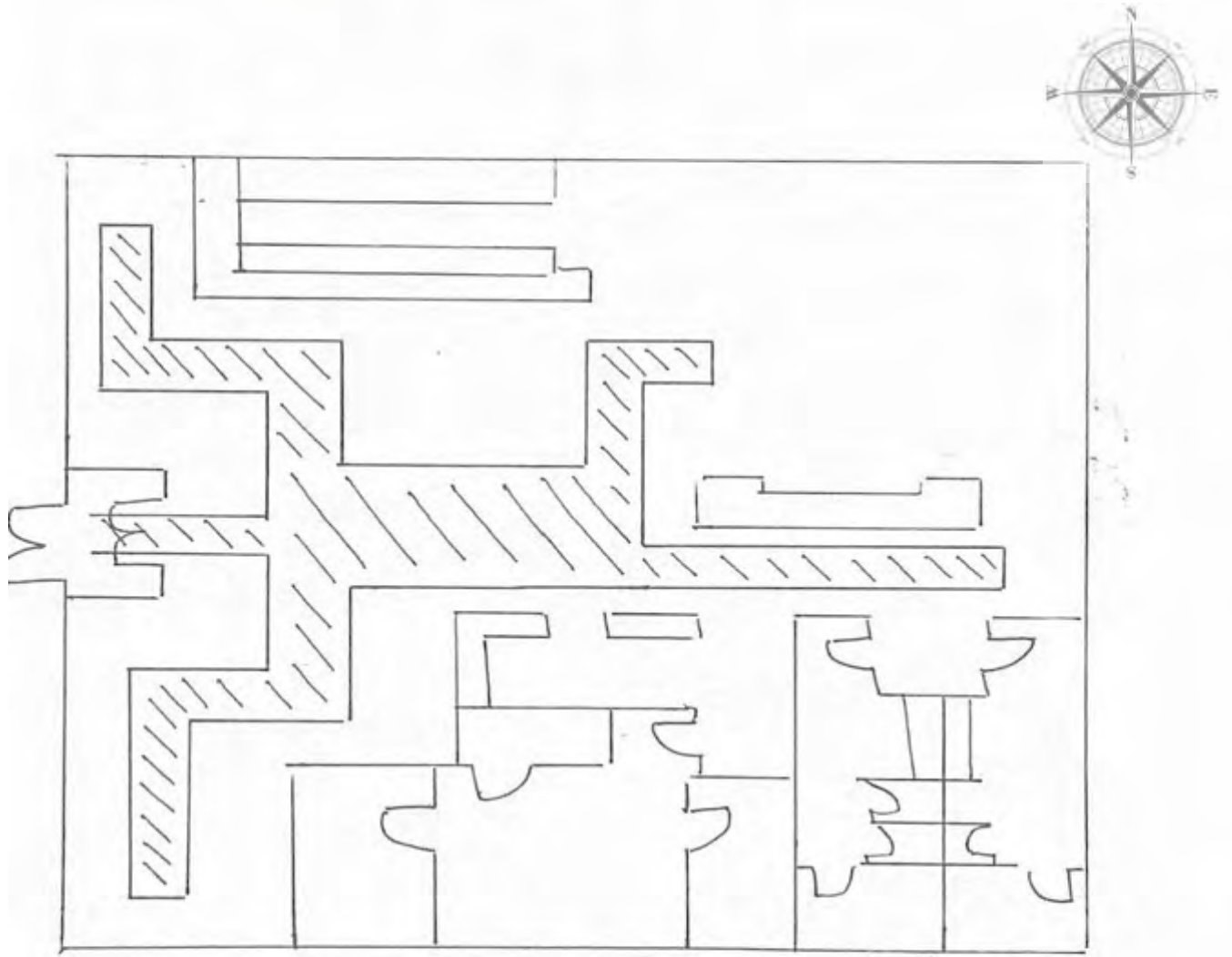


 **LIZABETH BROWN**
PROJECT MANAGER





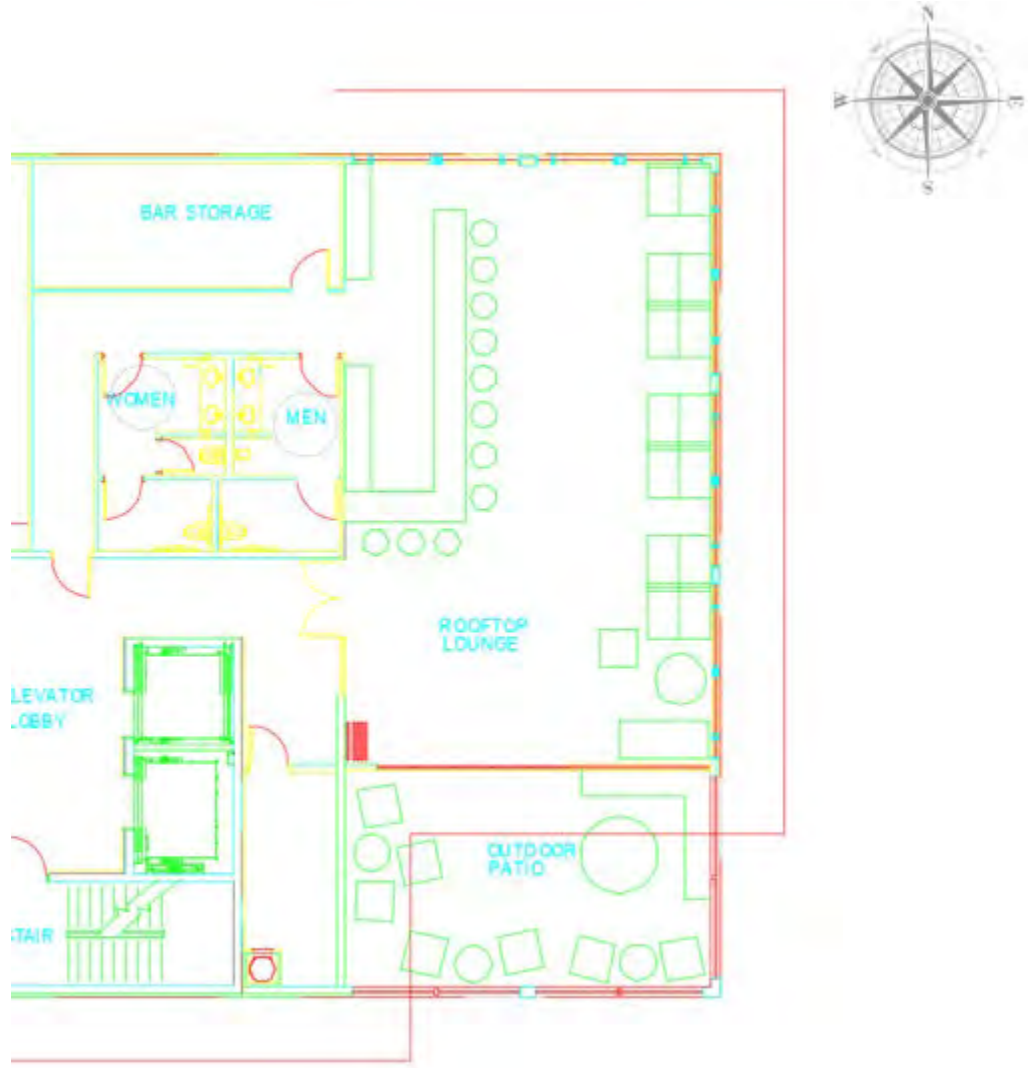
LOBBY
CIRCULATION PLAN 4



LIZABETH BROWN
PROJECT MANAGER



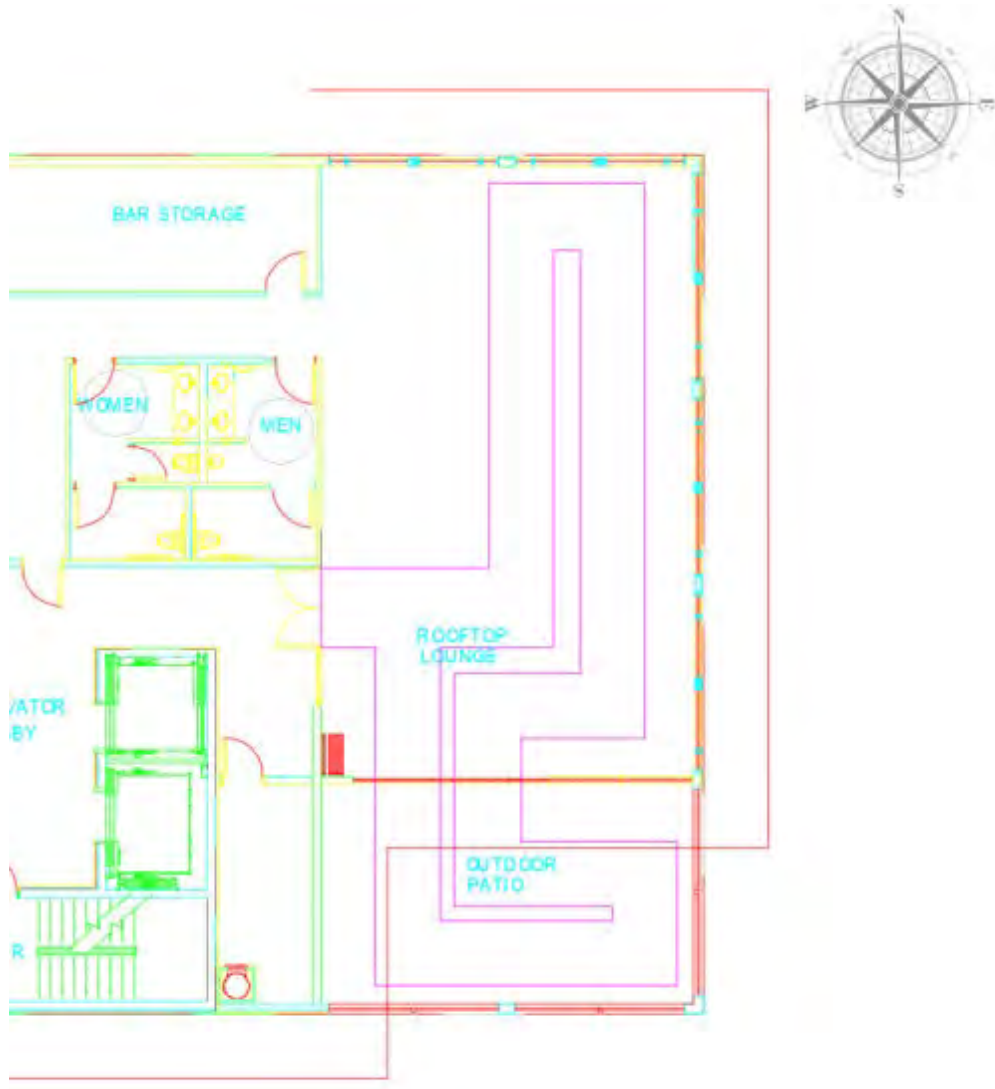
Rooftop Bar FURNITURE PLAN 1



SAMANTHA HEUMAN
LEADER AND COMMUNICATOR



Rooftop Bar CIRCULATION PLAN 1

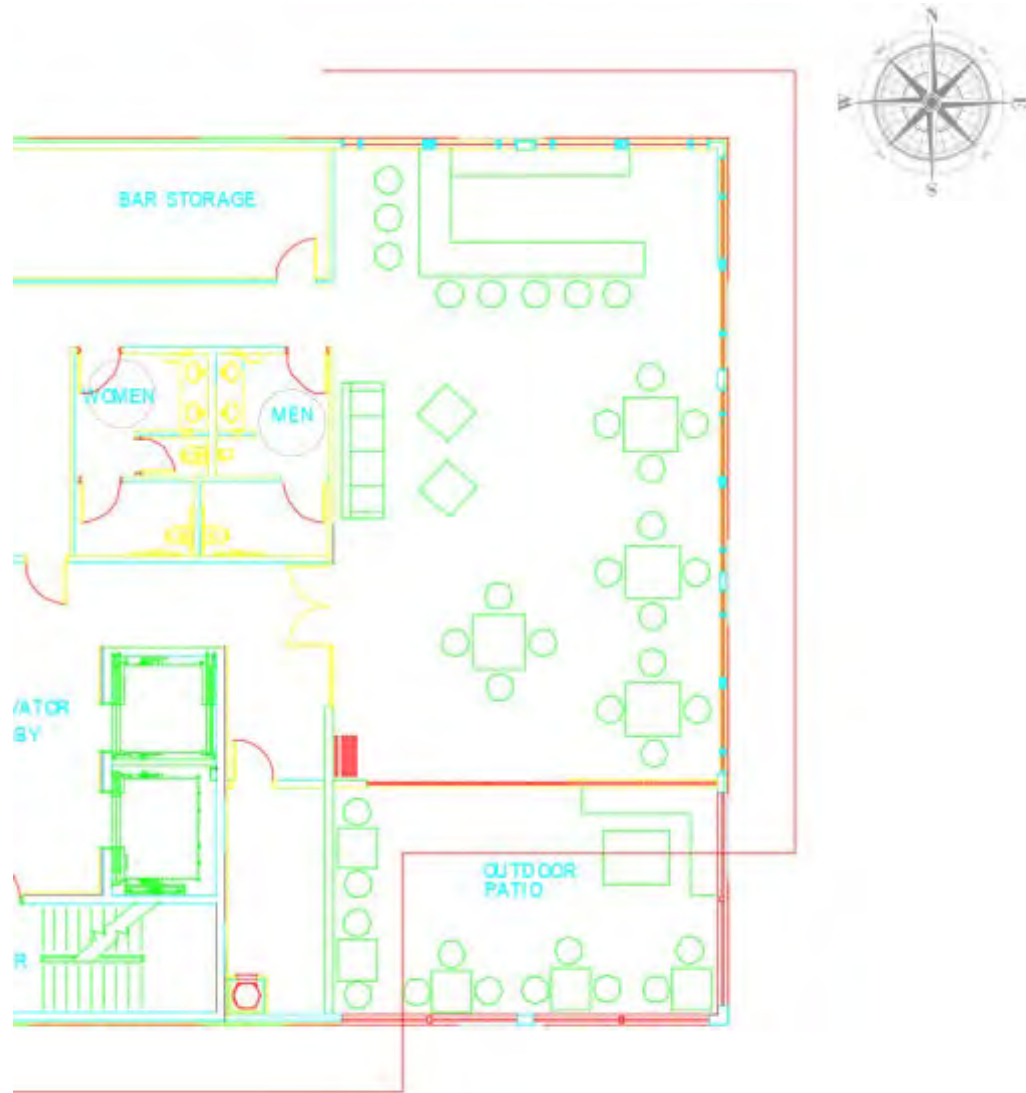


EDWARD THATCH DESIGN & CO.
AND
CLARENDON PROPERTIES



SAMANTHA HEUMAN
LEADER AND COMMUNICATOR

Rooftop Bar FURNITURE PLAN 2

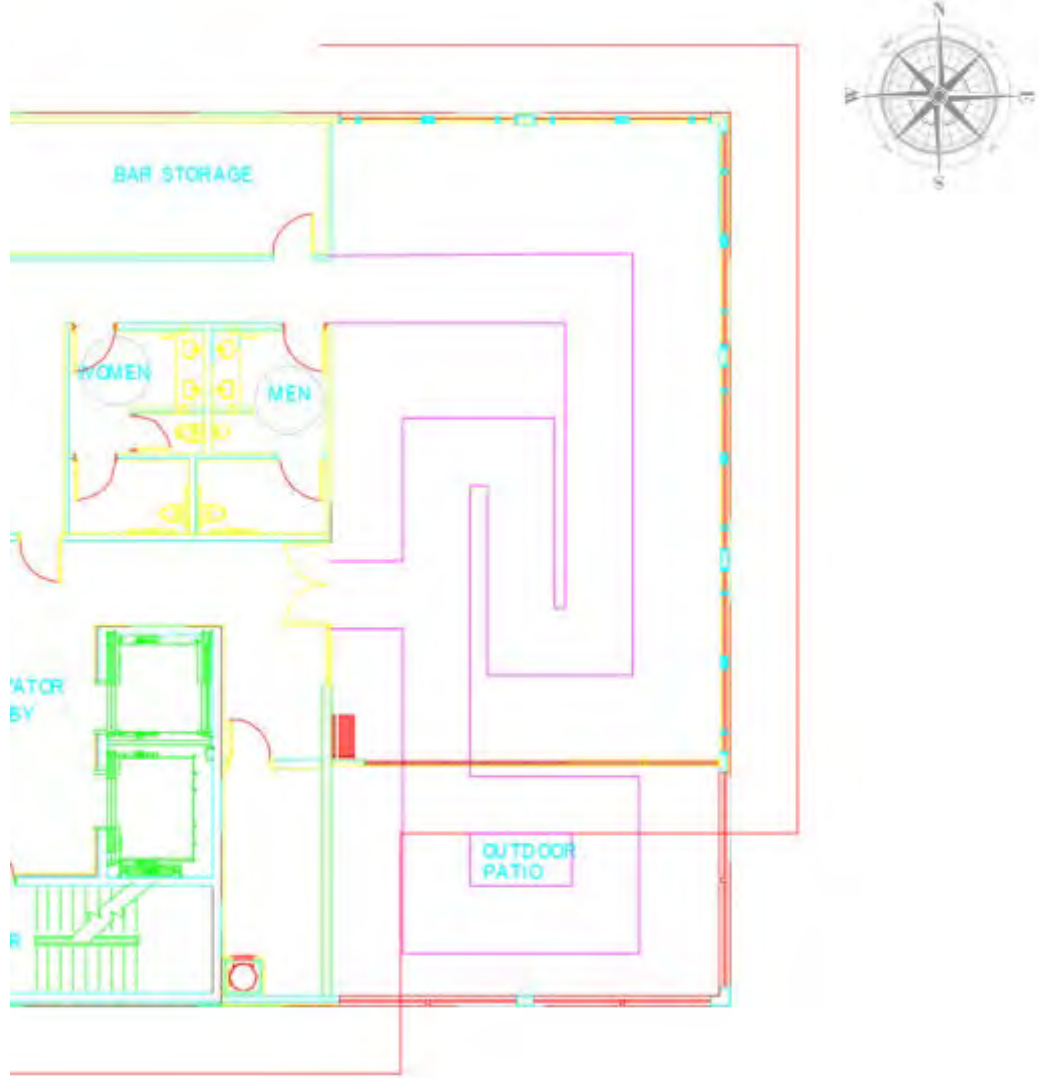


EDWARD THATCH DESIGN & CO.
AND
CLARENDON PROPERTIES



SAMANTHA HEUMAN
LEADER AND COMMUNICATOR

Rooftop Bar CIRCULATION PLAN 2

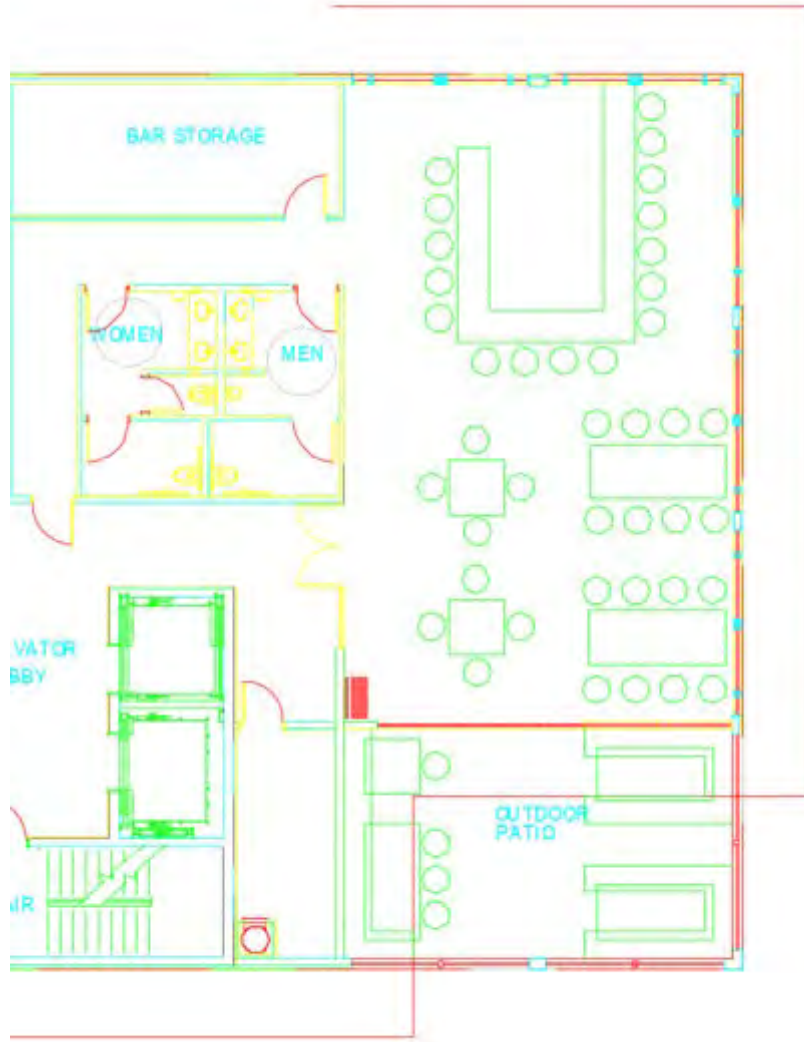


EDWARD THATCH DESIGN & CO.
AND
CLARENDON PROPERTIES



SAMANTHA HEUMAN
LEADER AND COMMUNICATOR

Rooftop Bar Furniture Plan 3



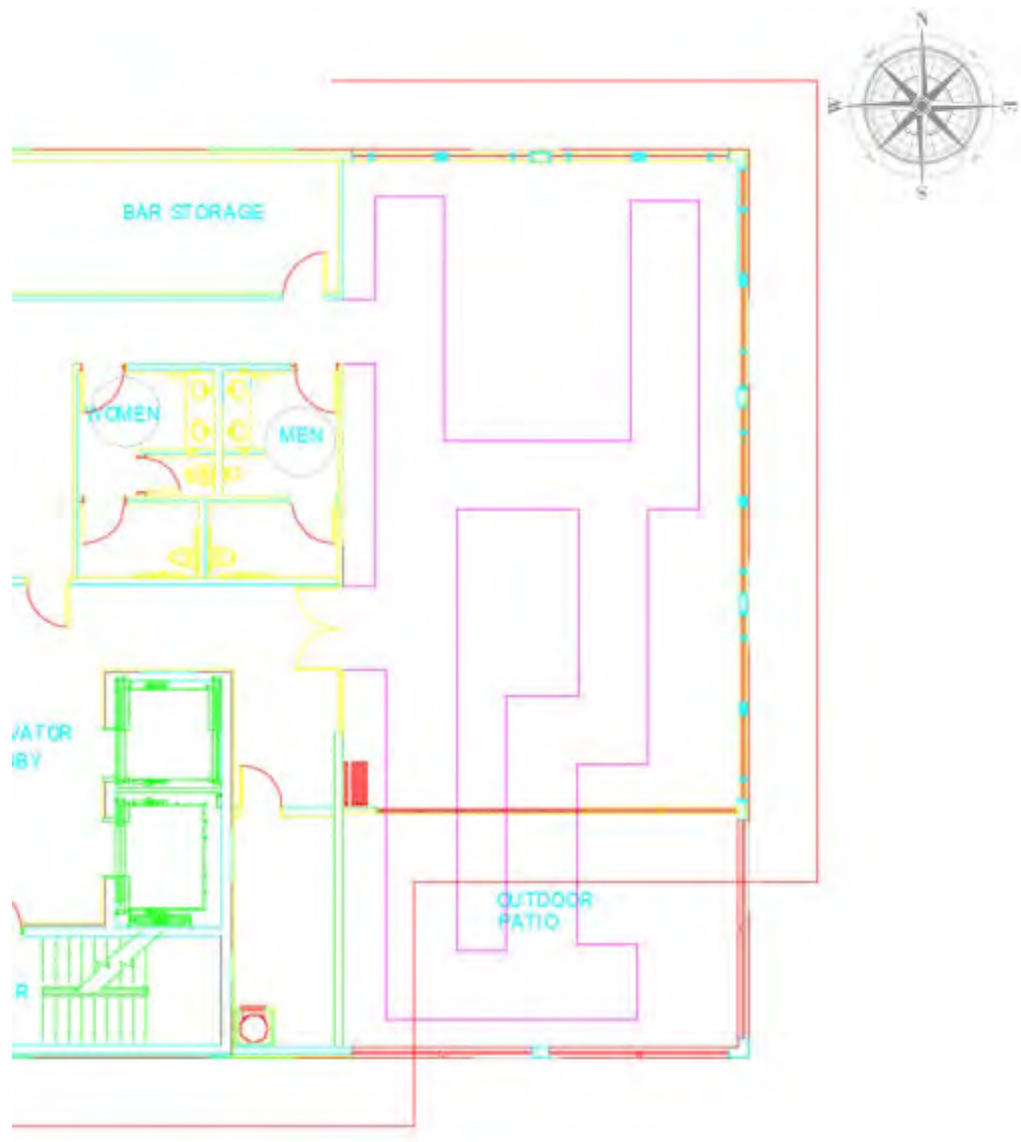
EDWARD THATCH DESIGN & CO.
AND
CLARENDON PROPERTIES

SAMANTHA HEUMAN
LEADER AND COMMUNICATOR



R

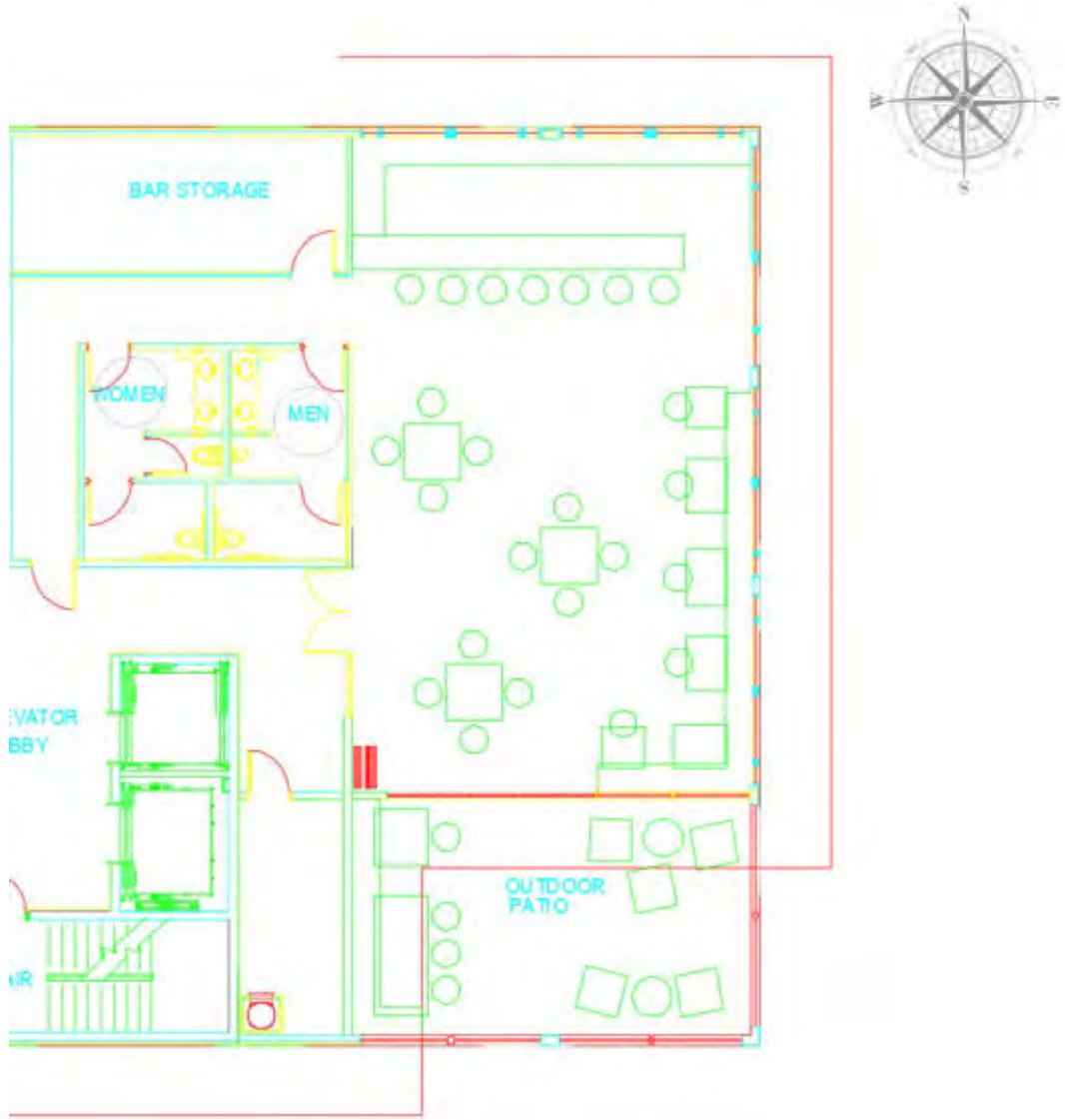
ROOFTOP BAR
CIRCULATION PLAN 3



SAMANTHA HEUMAN
LEADER AND COMMUNICATOR



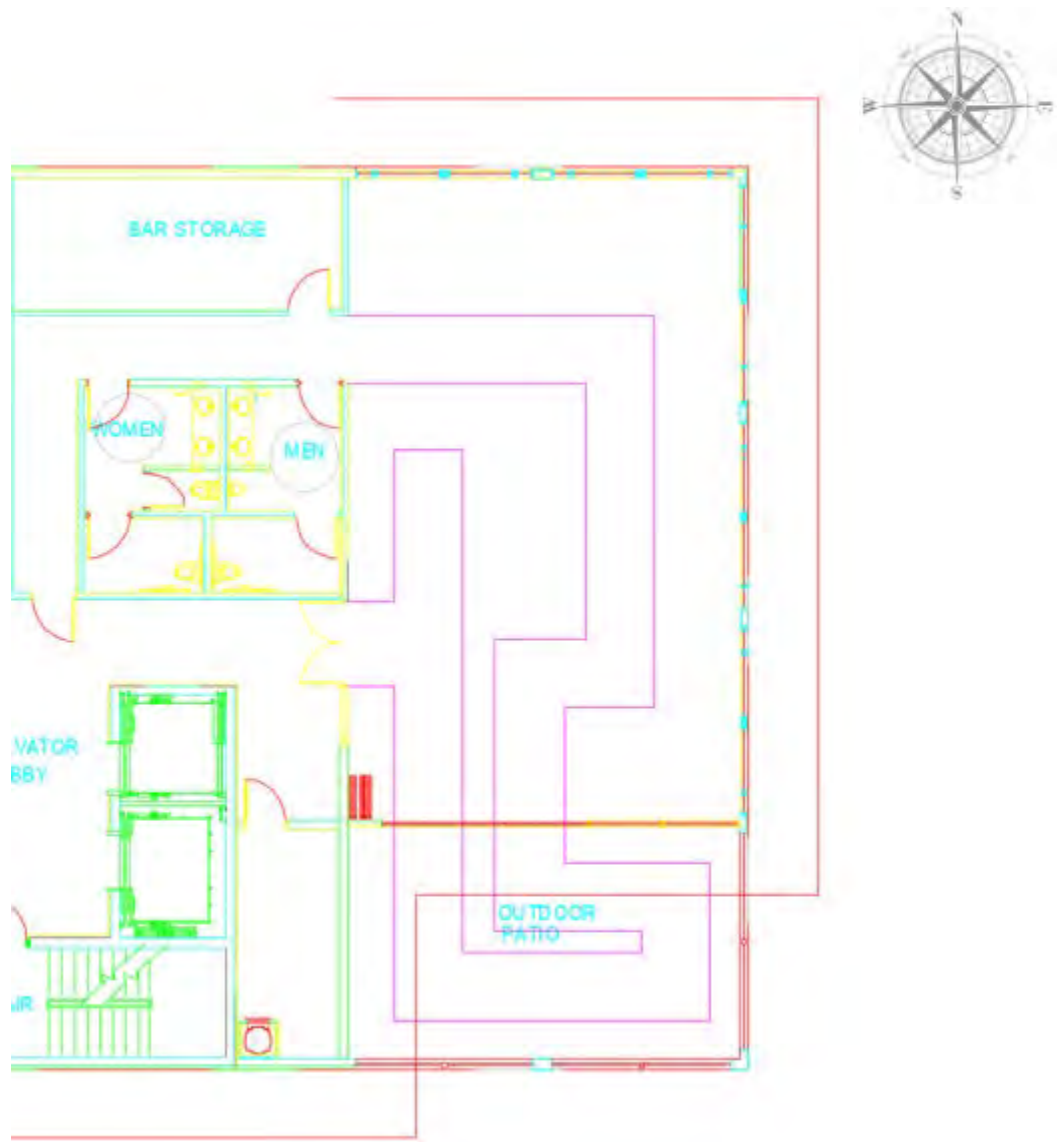
Rooftop Bar Furniture Plan 4



SAMANTHA HEUMAN
LEADER AND COMMUNICATOR



Rooftop Bar CIRCULATION PLAN 4



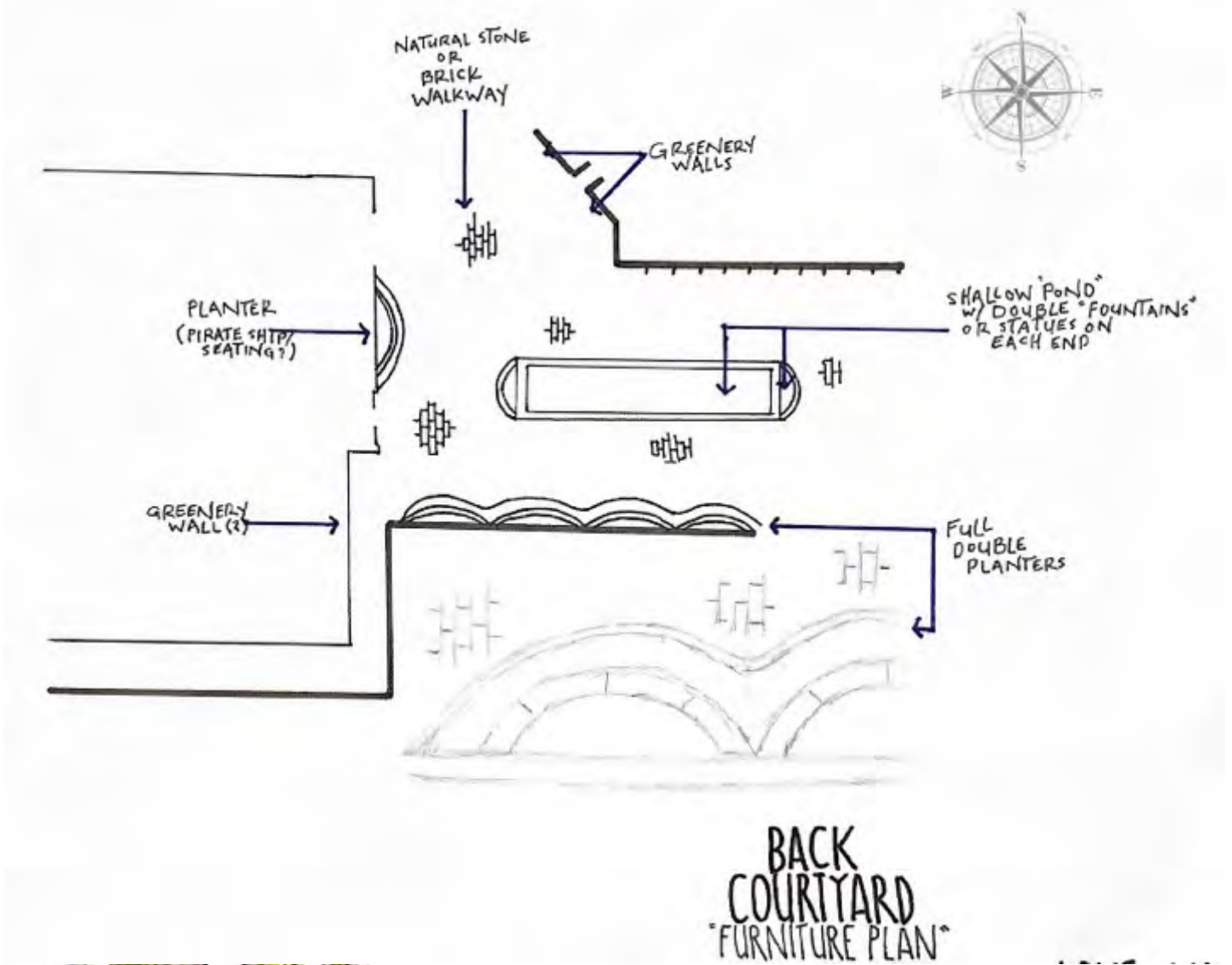
EDWARD THATCH DESIGN & CO.
AND
CLARENDON PROPERTIES



SAMANTHA HEUMAN
LEADER AND COMMUNICATOR

B

BACK COURTYARD FURNITURE PLAN 1

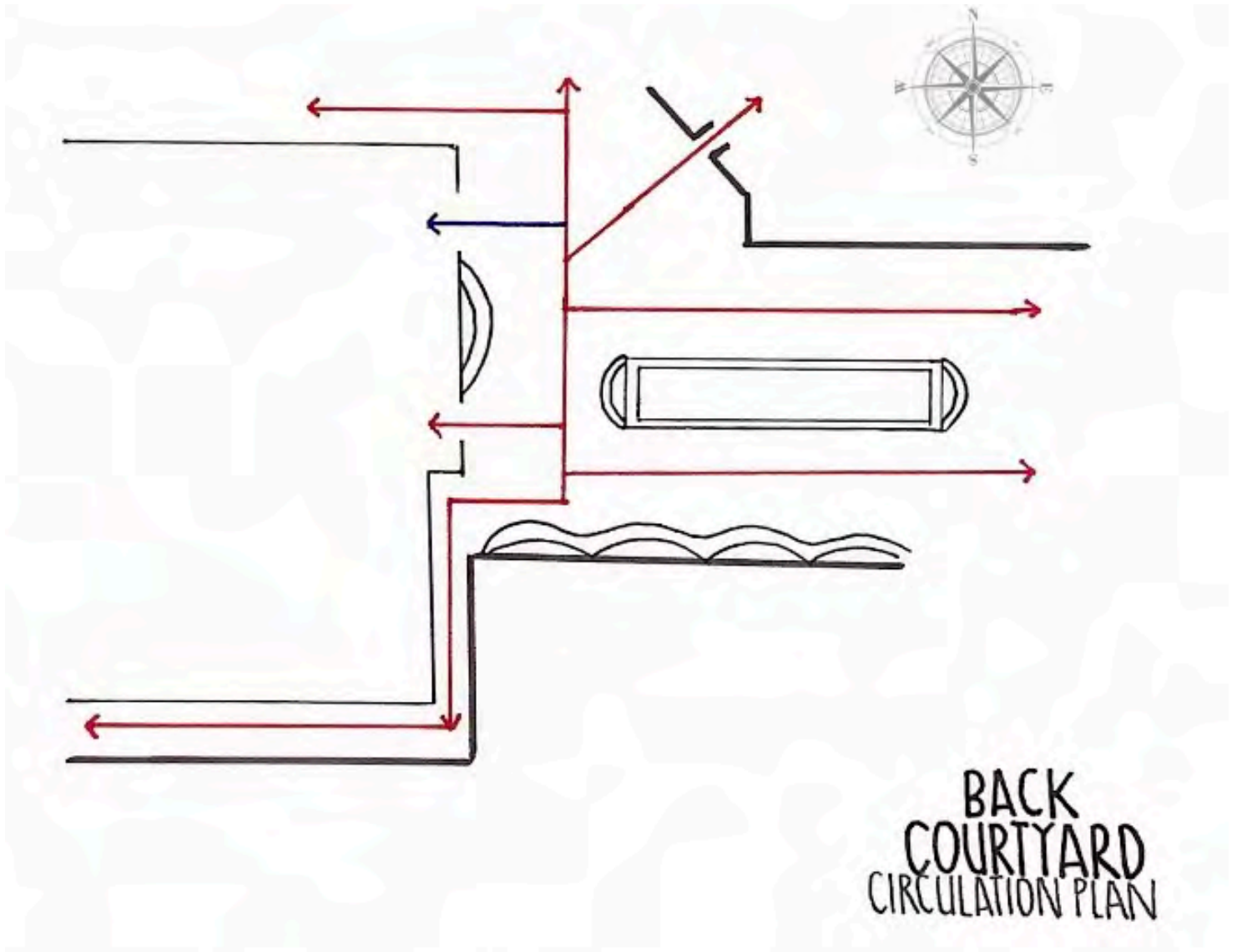


*M*CKENZIE LOVE
DESIGN MANAGER



B

ACK COURTYARD CIRCULATION PLAN 1

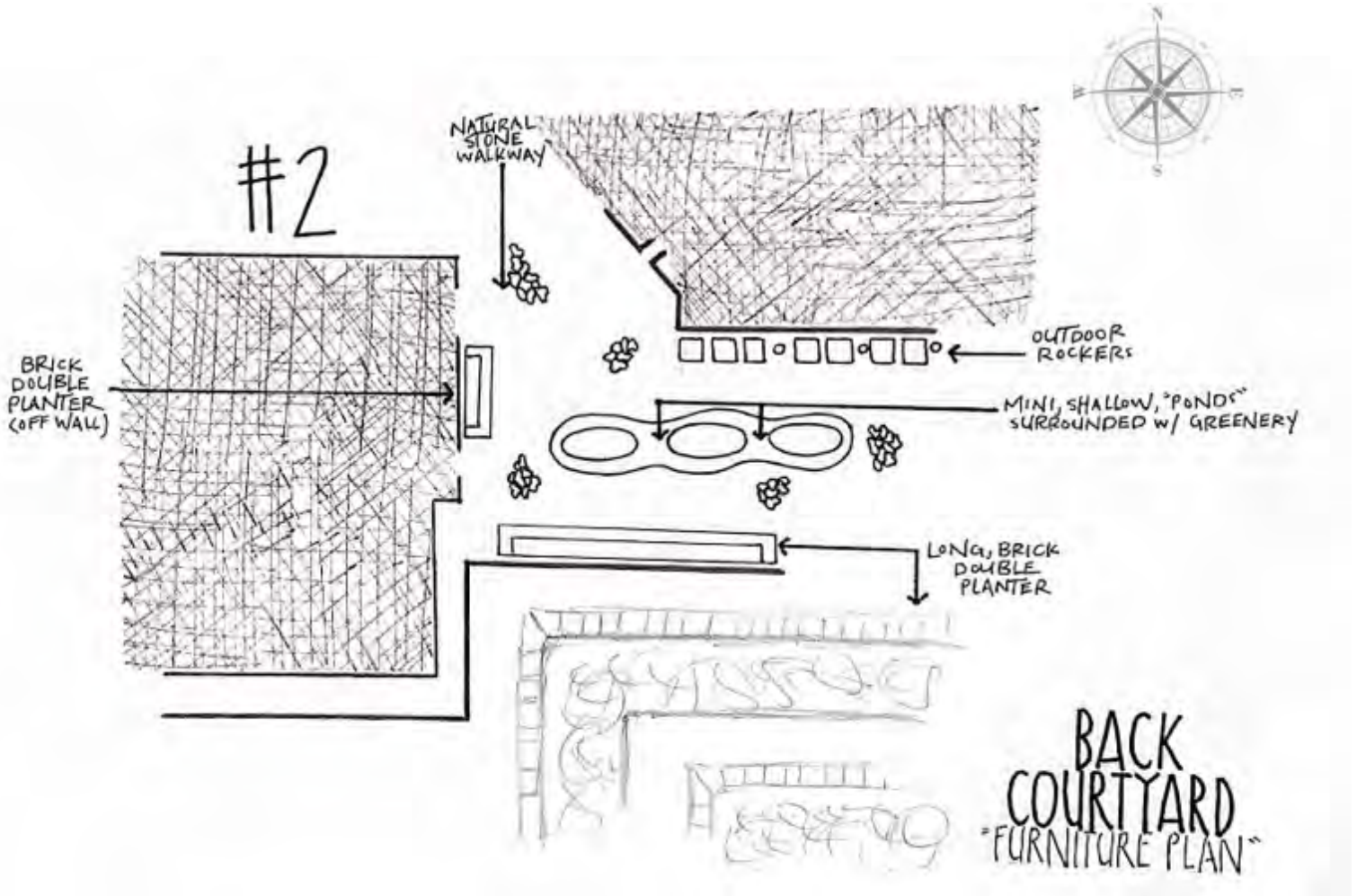


*M*CKENZIE LOVE
DESIGN MANAGER



B

ACK COURTYARD FURNITURE PLAN 2

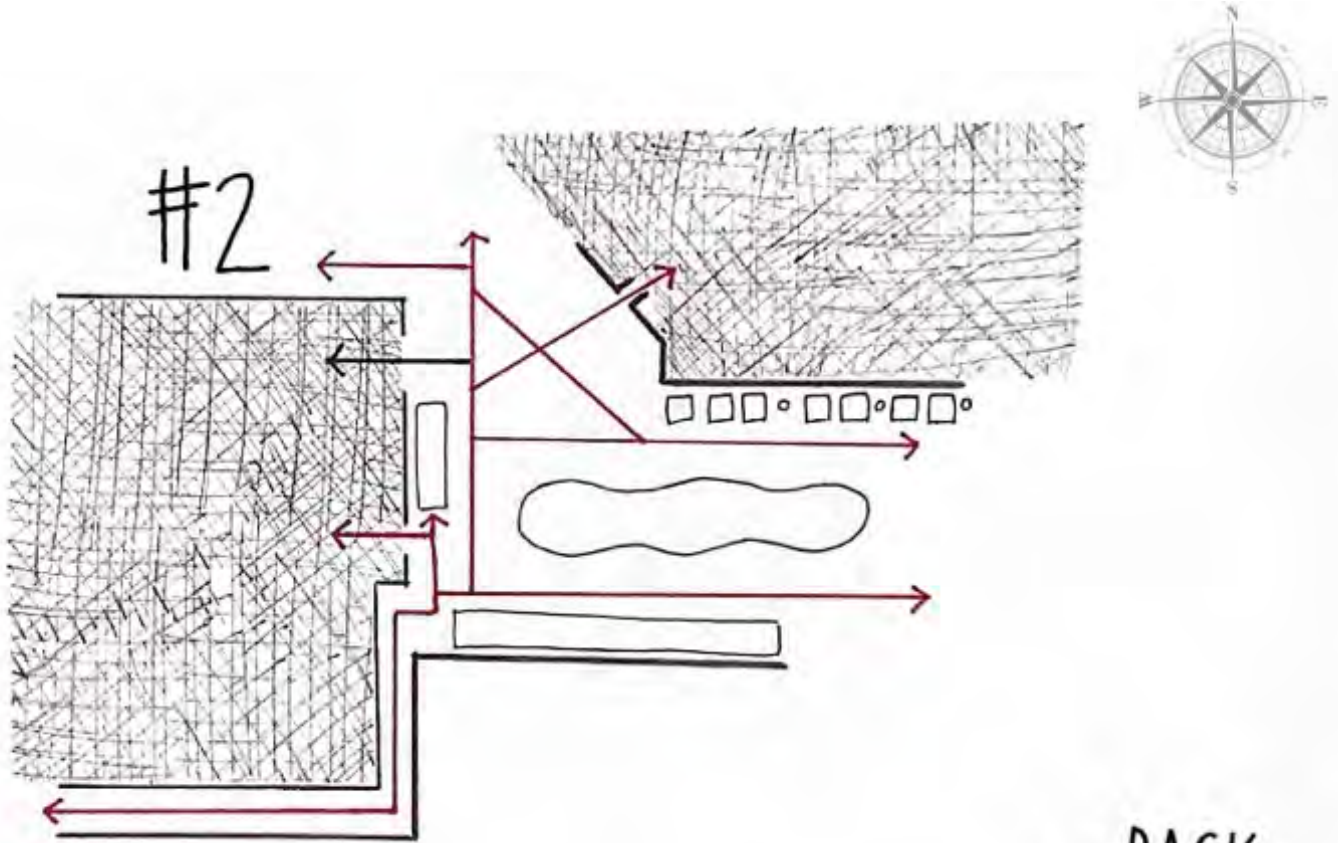


*M*CKENZIE LOVE
DESIGN MANAGER



B

ACK COURTYARD CIRCULATION PLAN 2



BACK
COURTYARD
CIRCULATION PLAN

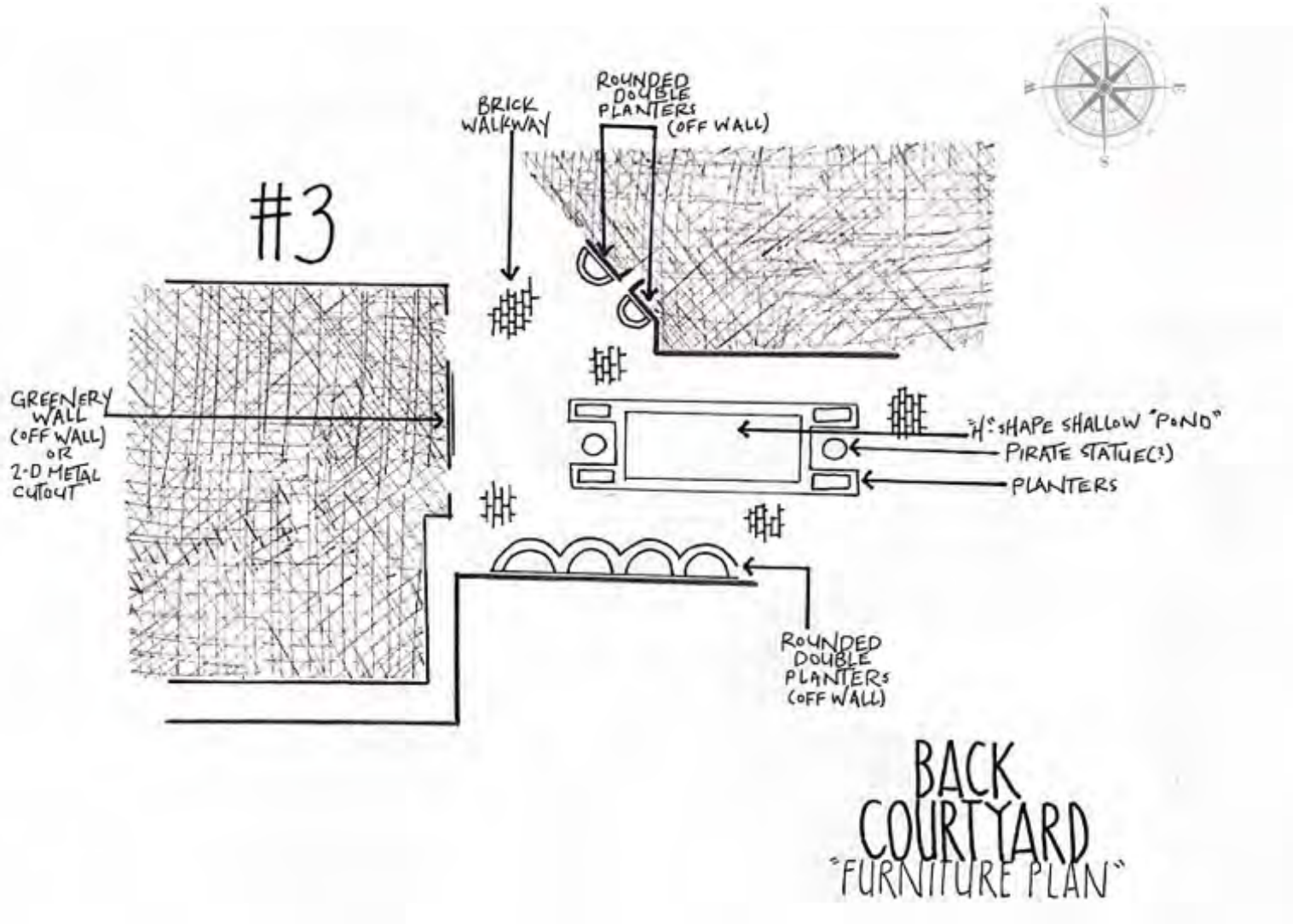
EDWARD THATCHdesign & CO.
AND
CLARENDON PROPERTIES

*M*CKENZIE LOVE
DESIGN MANAGER



B

ACK COURTYARD
FURNITURE PLAN 3



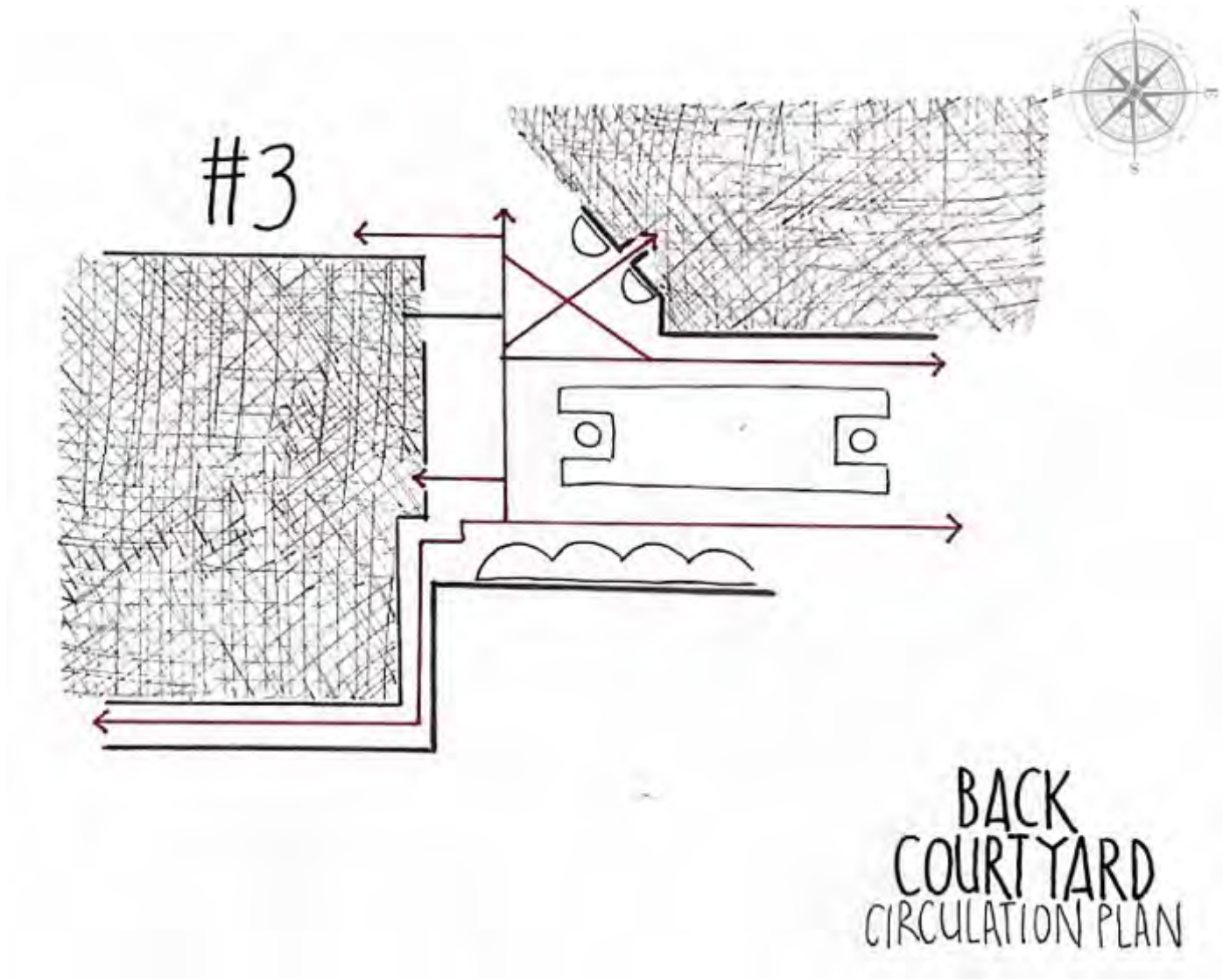
EDWARD THATCH DESIGN & CO.
AND
CLARENDON PROPERTIES

*M*CKENZIE LOVE
DESIGN MANAGER



B

ACK COURTYARD
CIRCULATION PLAN 3

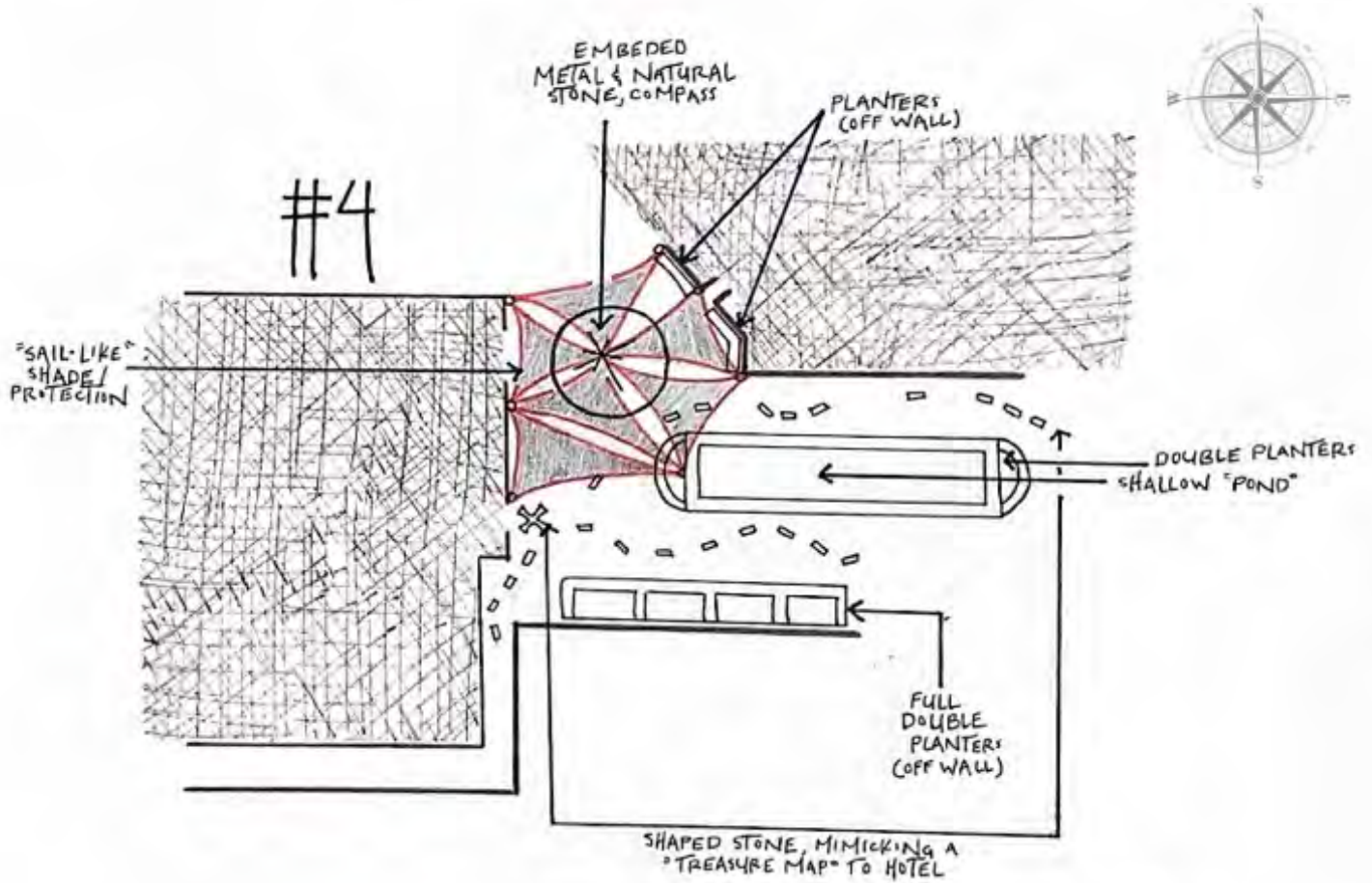


*M*CKENZIE LOVE
DESIGN MANAGER



B

BACK COURTYARD FURNITURE PLAN 4



BACK
COURTYARD
"FURNITURE PLAN"

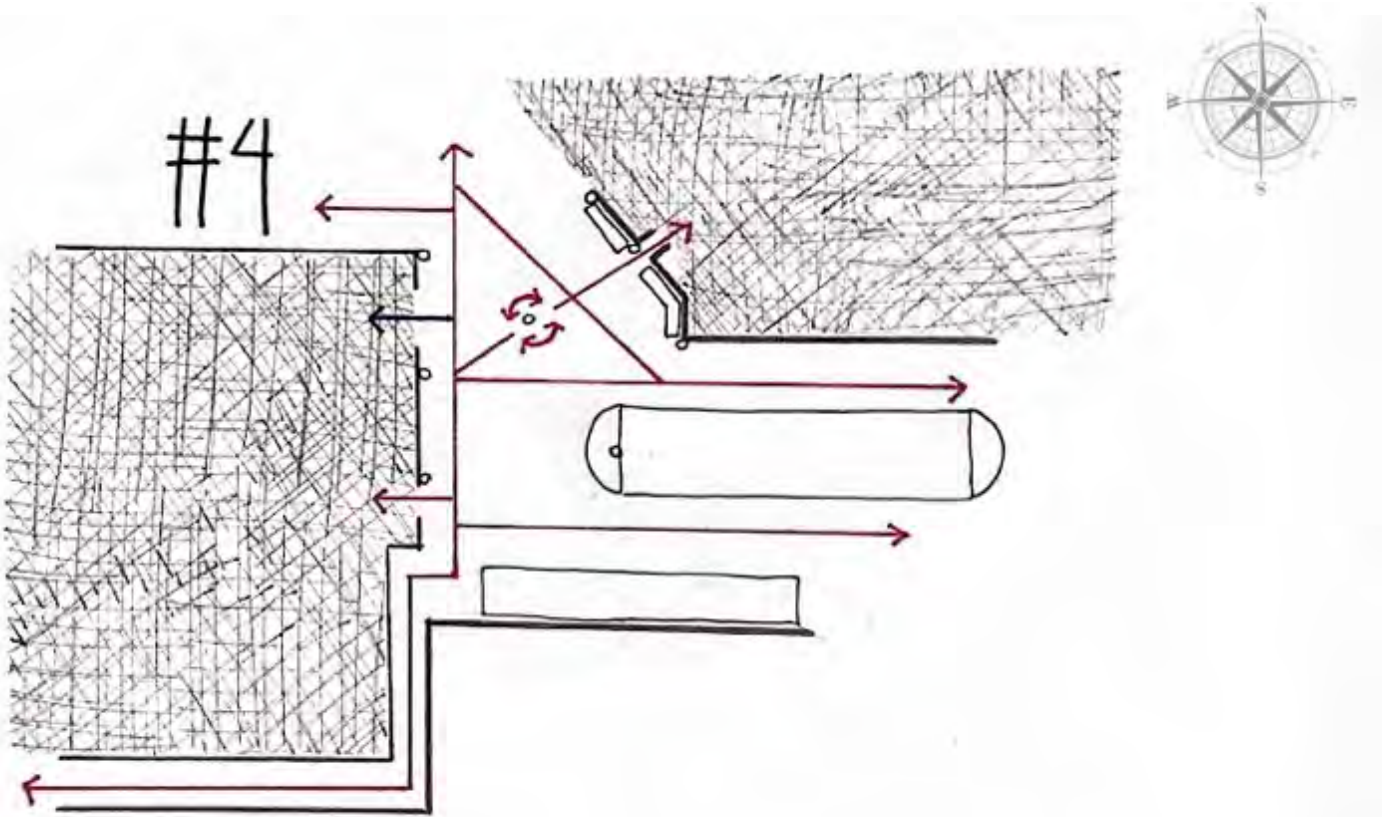
EDWARD THATCH DESIGN & CO.
AND
CLARENDON PROPERTIES



*M*CKENZIE LOVE
DESIGN MANAGER

B

ACK COURTYARD
CIRCULATION PLAN 4



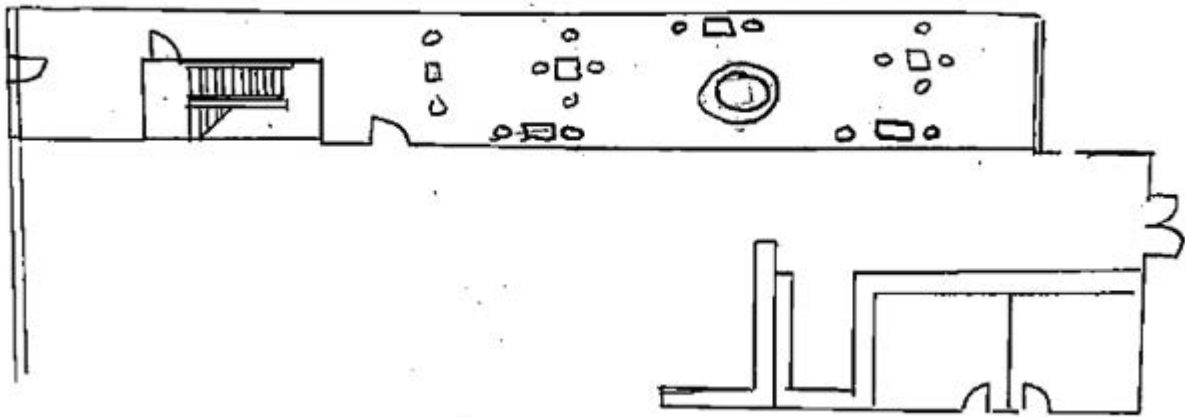
BACK
COURTYARD
CIRCULATION PLAN

EDWARD THATCH DESIGN & CO.
AND
CLARENDON PROPERTIES

*M*CKENZIE LOVE
DESIGN MANAGER



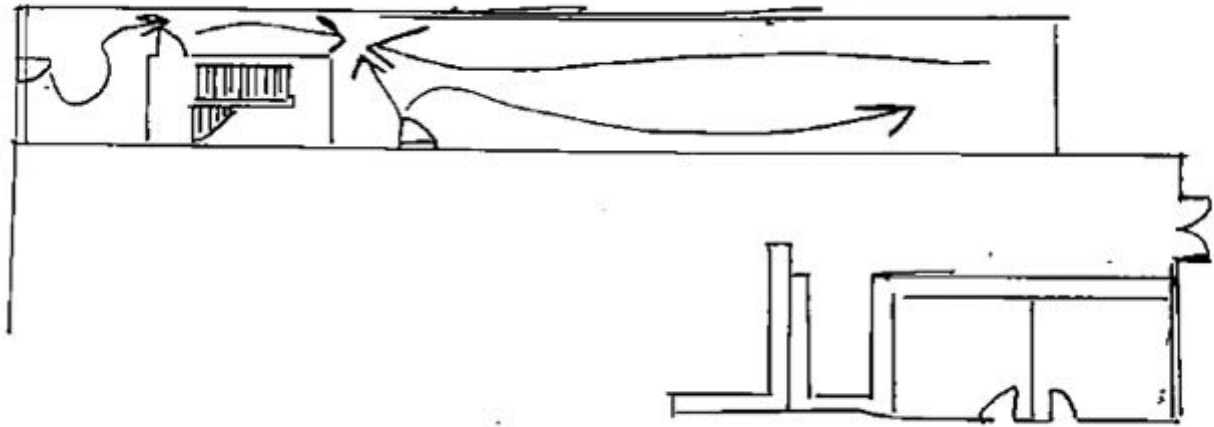
SIDE PATIO FURNITURE PLAN 1



COREY EADS
SCHEMATIC MANAGER



SIDE PATIO CIRCULATION PLAN 1

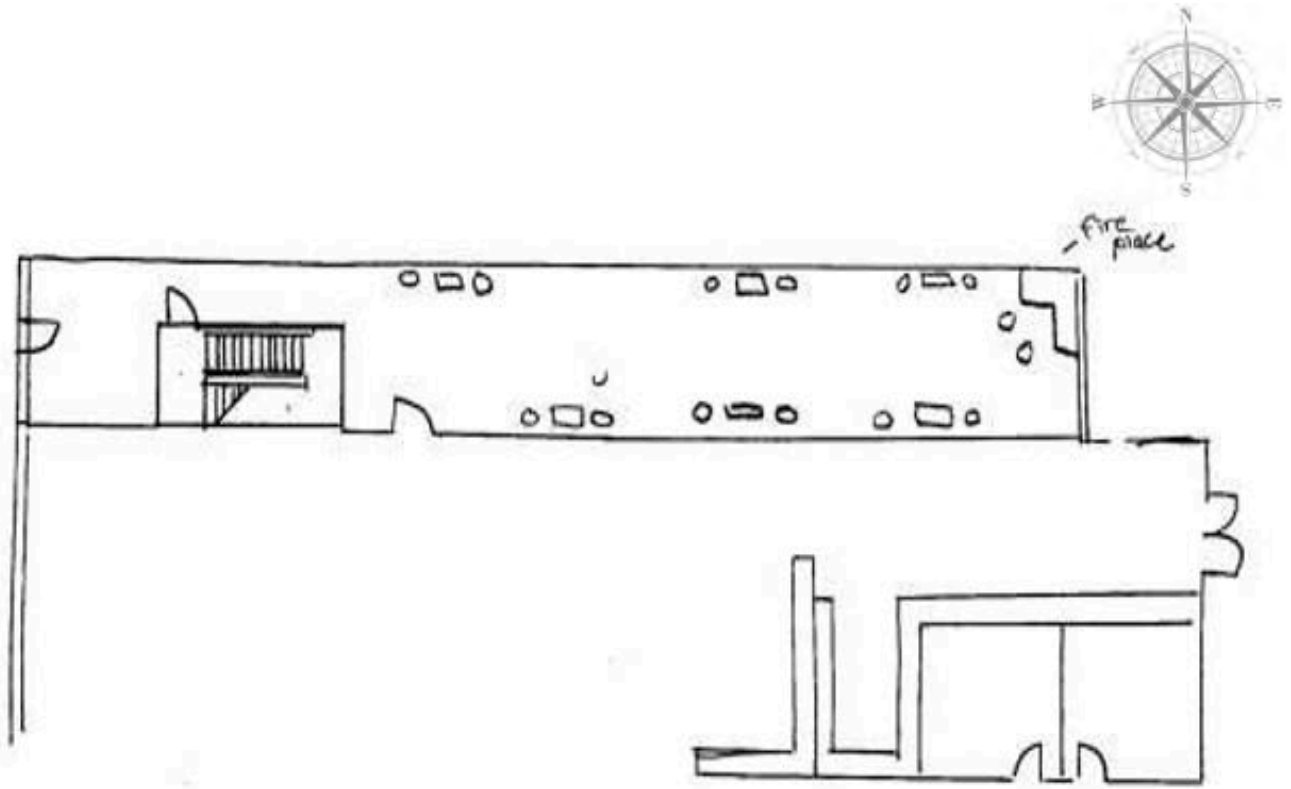


EDWARD THATCH DESIGN & CO.
AND
CLARENDON PROPERTIES



COREY EADS
SCHEMATIC MANAGER

SIDE PATIO FURNITURE PLAN 2

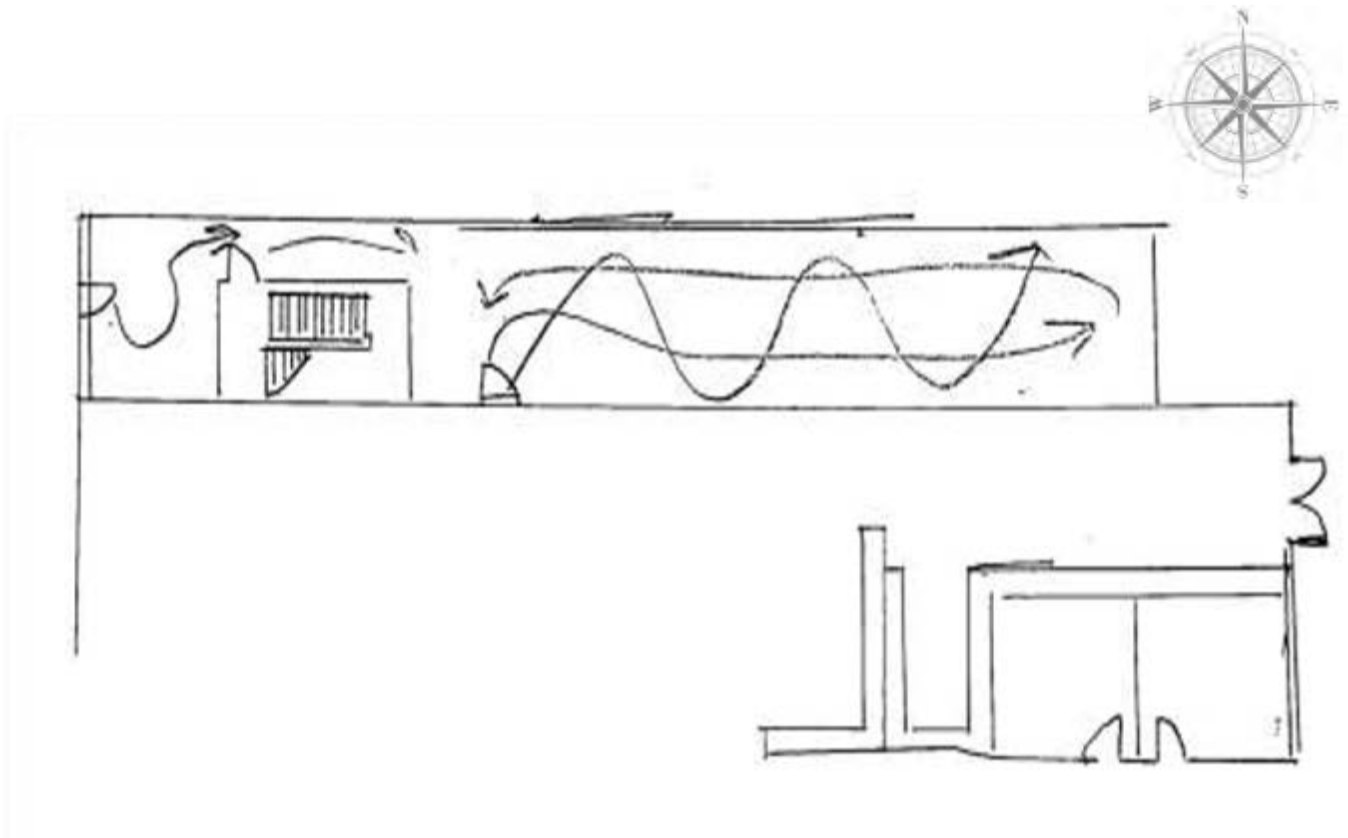


EDWARD THATCH DESIGN & CO.
AND
CLARENDON PROPERTIES



COREY EADS
SCHEMATIC MANAGER

SIDE PATIO CIRCULATION PLAN 2

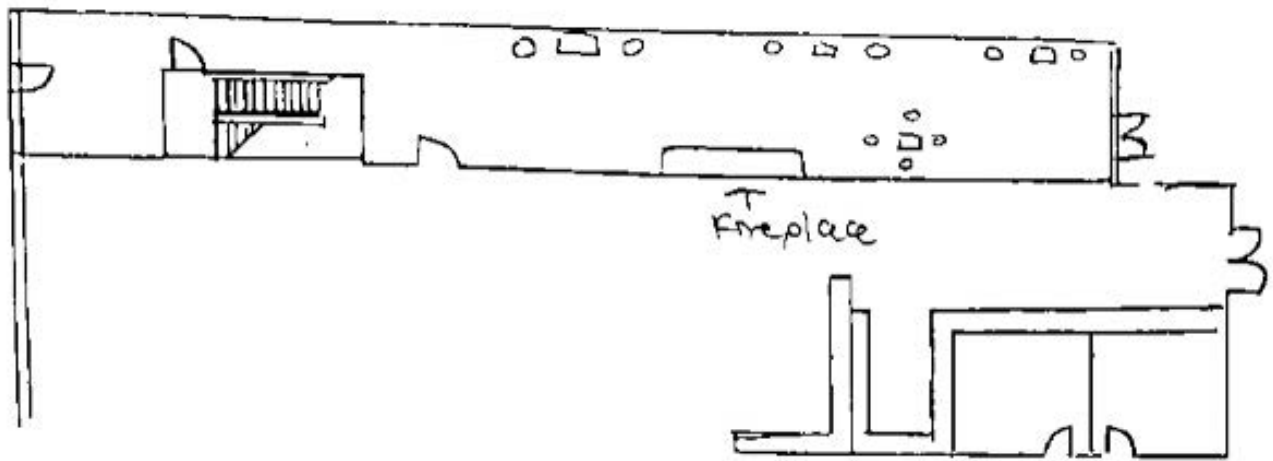


EDWARD THATCH DESIGN & CO.
AND
CLARENDON PROPERTIES



COREY EADS
SCHEMATIC MANAGER

SIDE PATIO FURNITURE PLAN 3

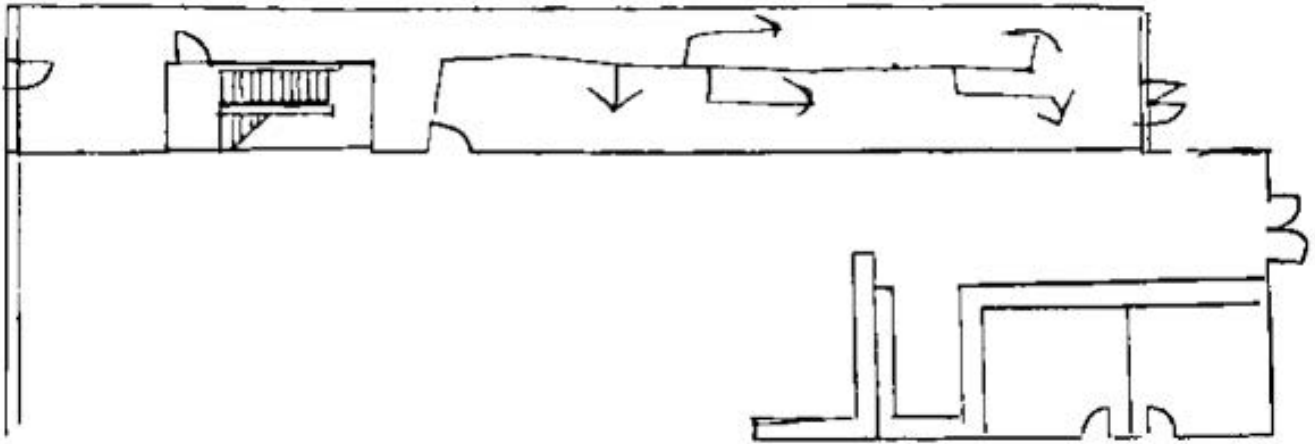


EDWARD THATCH DESIGN & CO.
AND
CLARENDON PROPERTIES



COREY EADS
SCHEMATIC MANAGER

SIDE PATIO CIRCULATION PLAN 3

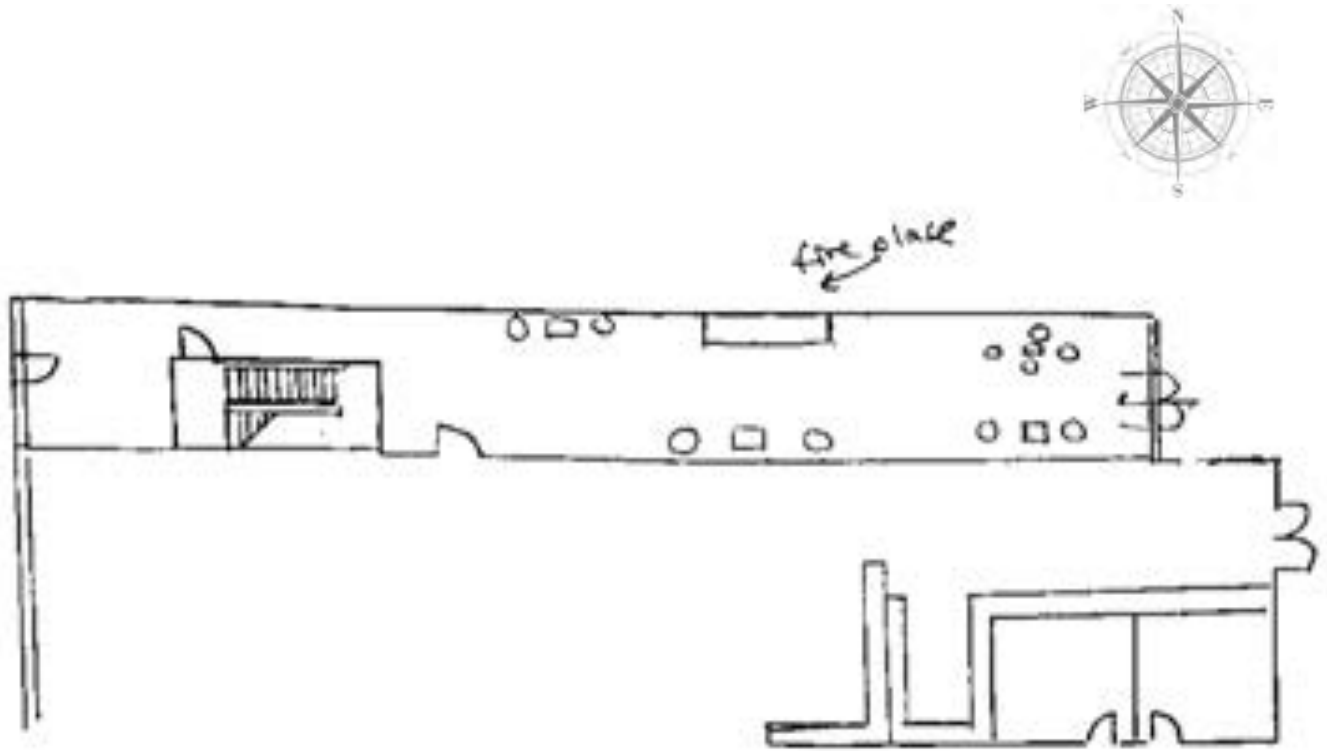


EDWARD THATCH DESIGN & CO.
AND
CLARENDON PROPERTIES



COREY EADS
SCHEMATIC MANAGER

SIDE PATIO FURNITURE PLAN 4

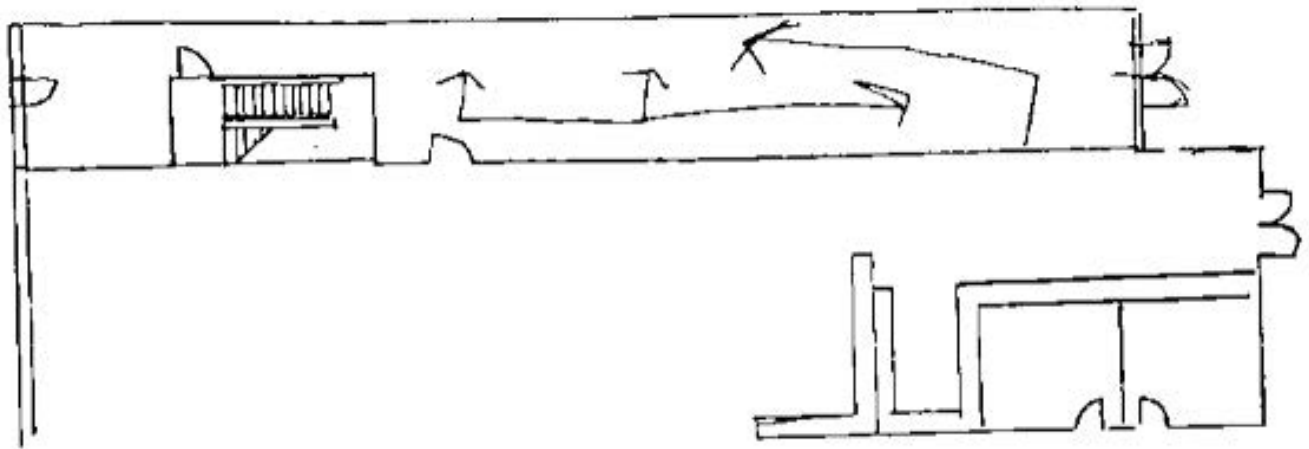


EDWARD THATCH DESIGN & CO.
AND
CLARENDON PROPERTIES



COREY EADS
SCHEMATIC MANAGER


SIDE PATIO CIRCULATION PLAN 4



EDWARD THATCH DESIGN & CO.
AND
CLARENDON PROPERTIES



COREY EADS
SCHEMATIC MANAGER



**DESIGN
SKETCHES**

D

ESIGN SKETCHES
DIFFUSE FOCUS WORK

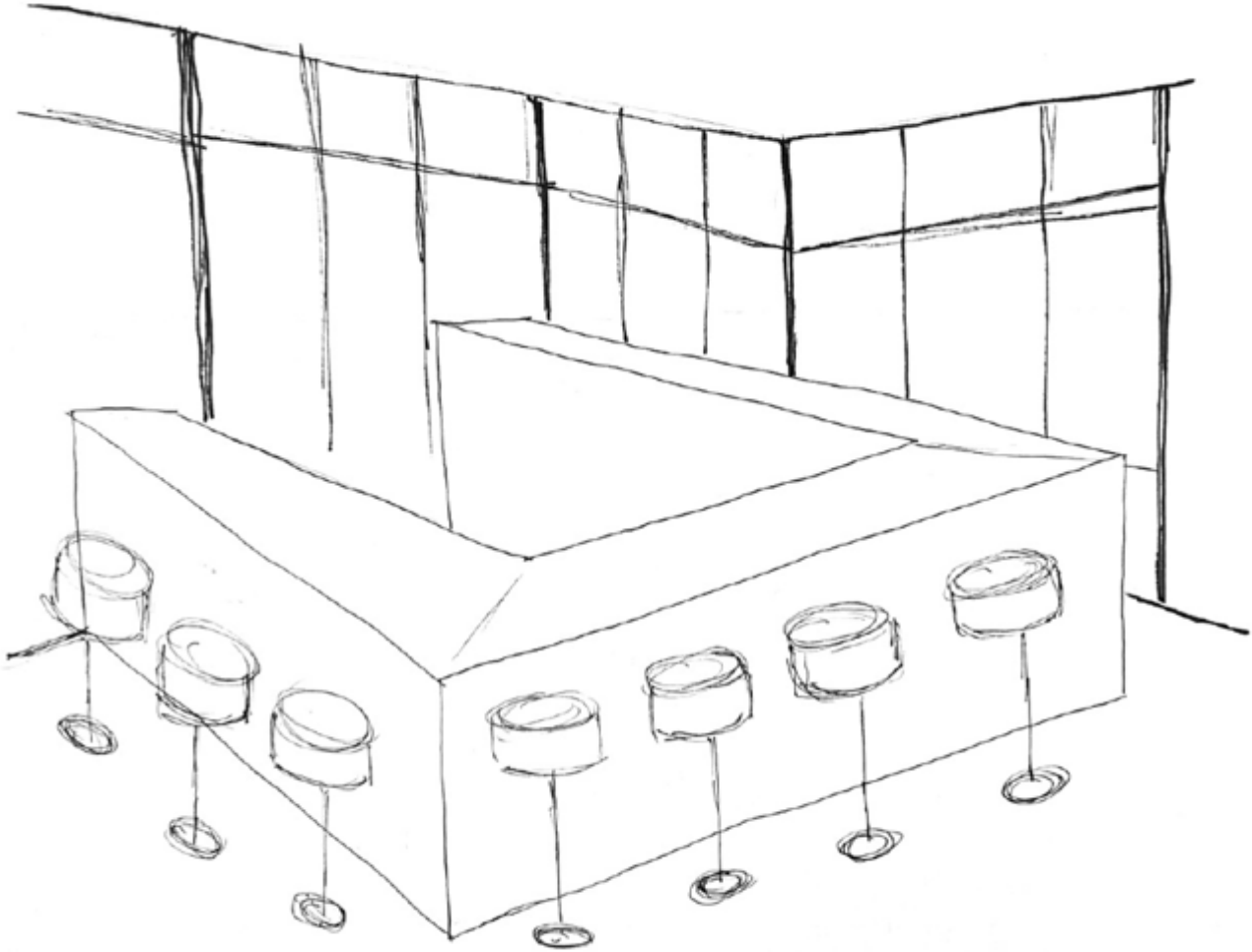


SAMANTHA HEUMAN
LEADER AND COMMUNICATOR



PERSPECTIVE SKETCHES

DIFFUSE FOCUS WORK

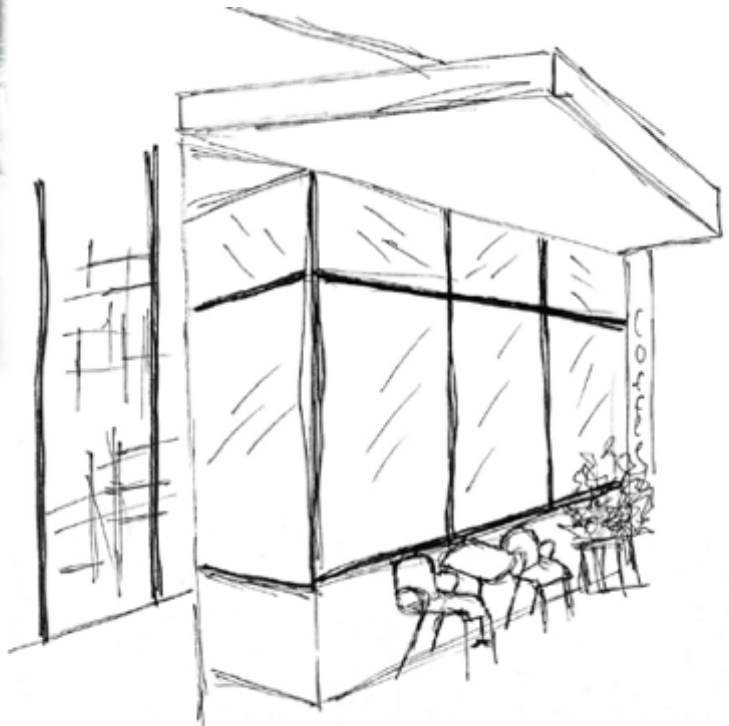


EDWARD THATCH DESIGN & CO.
AND
CLARENDON PROPERTIES



SAMANTHA HEUMAN
LEADER AND COMMUNICATOR

*D*ESIGN SKETCHES DAYDREAMING



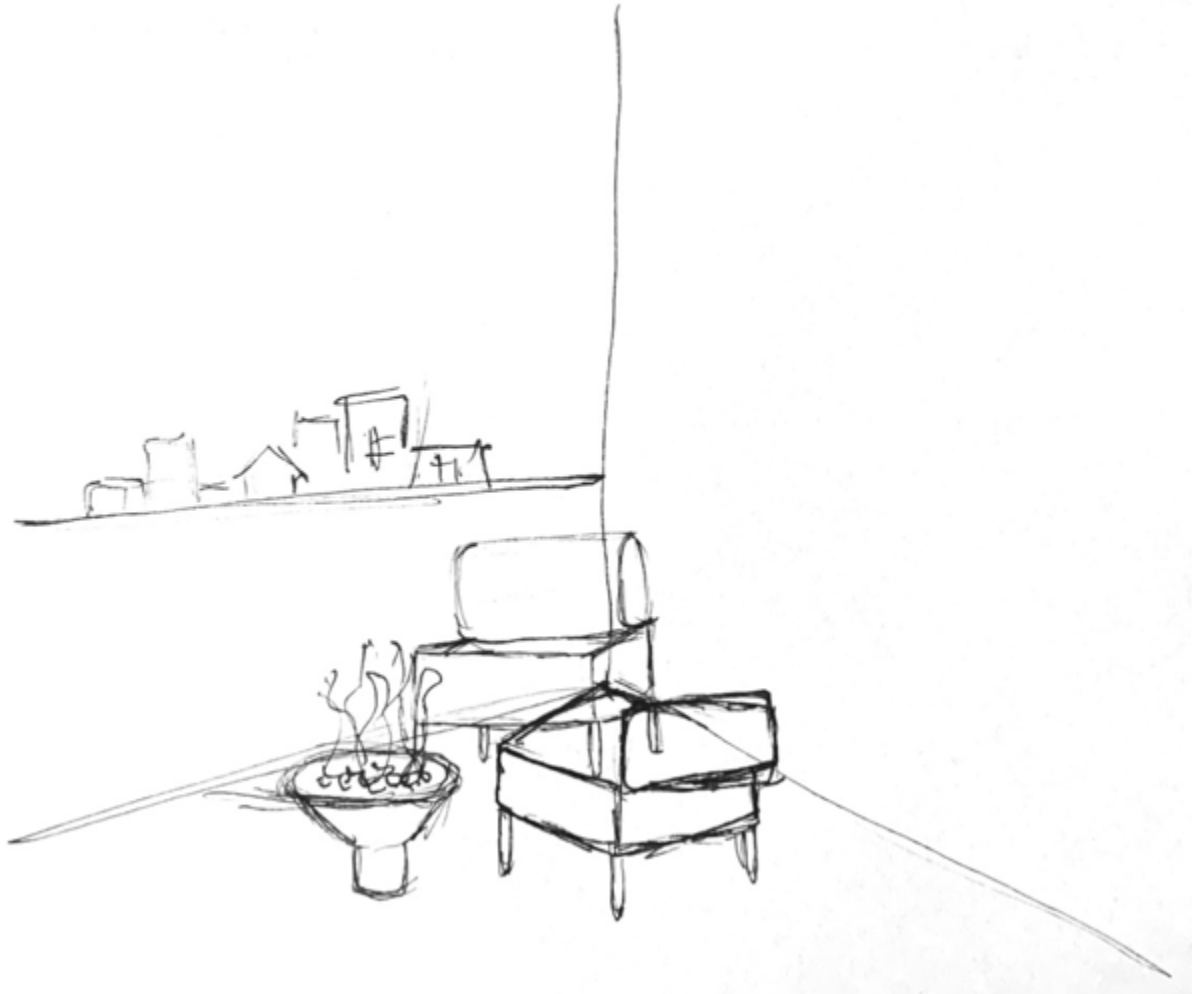
EDWARD THATCH DESIGN & CO.
AND
CLARENDON PROPERTIES



*S*AMANTHA HEUMAN
LEADER AND COMMUNICATOR

PERSPECTIVE SKETCHES

DAYDREAMING



SAMANTHA HEUMAN
LEADER AND COMMUNICATOR



*D*ESIGN SKETCHES GROUP PLANNING / MEETING

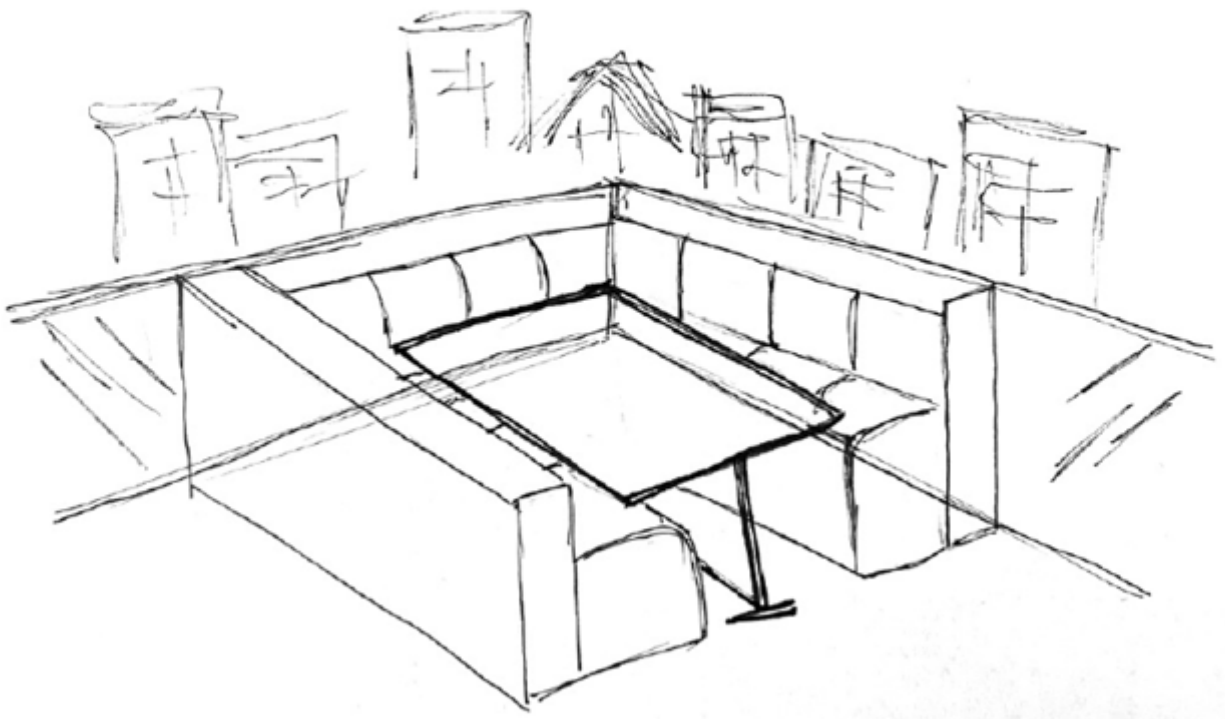


*S*AMANTHA HEUMAN
LEADER AND COMMUNICATOR



PERSPECTIVE SKETCHES

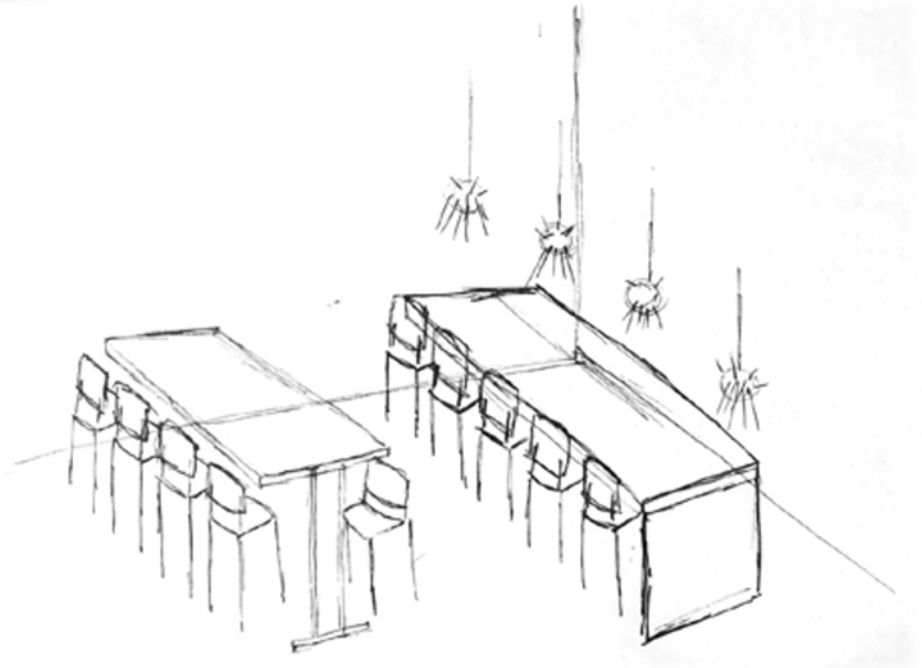
GROUP PLANNING / MEETING



SAMANTHA HEUMAN
LEADER AND COMMUNICATOR



*D*ESIGN SKETCHES SOCIALIZING



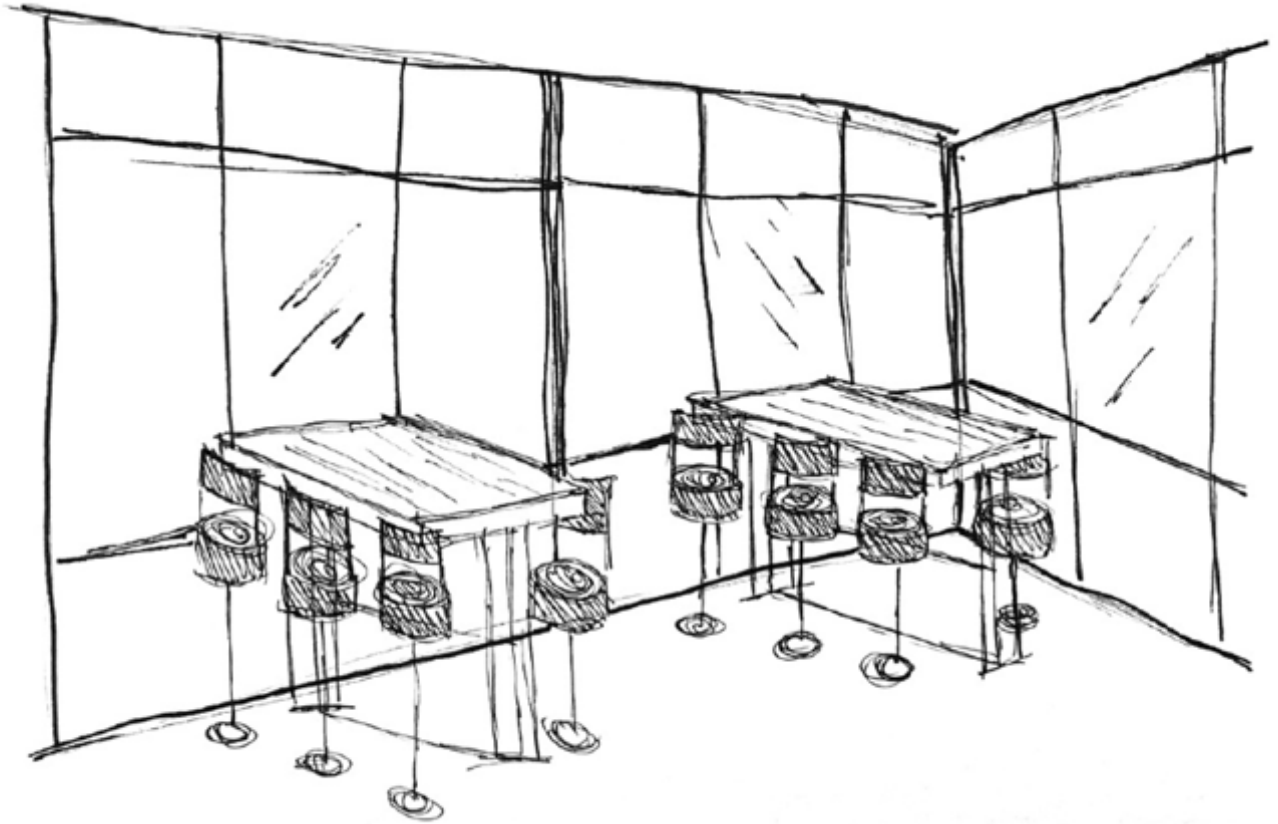
EDWARD THATCH DESIGN & CO.
AND
CLARENDON PROPERTIES



*S*AMANTHA HEUMAN
LEADER AND COMMUNICATOR

PERSPECTIVE SKETCHES

SOCIALIZING



EDWARD THATCH DESIGN & CO.
AND
CLARENDON PROPERTIES



S

AMANTHA HEUMAN
LEADER AND COMMUNICATOR

D

ESIGN SKETCHES
DIFFUSE FOCUS WORK

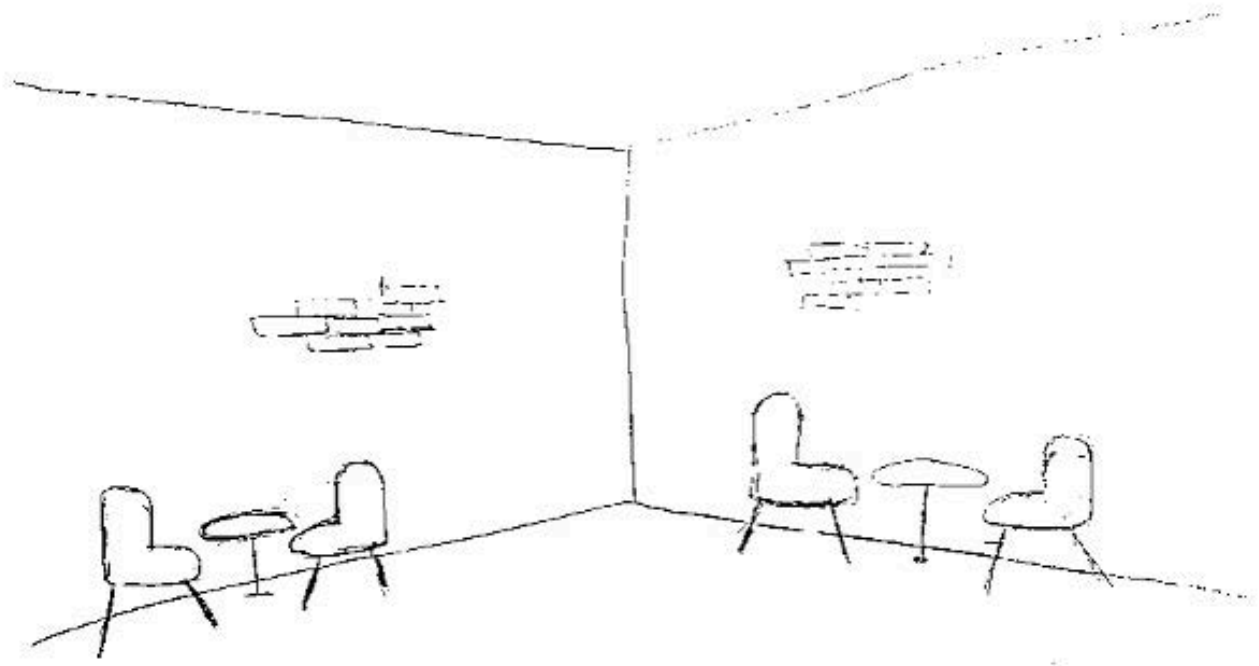


COREY EADS
SCHEMATIC MANAGER



PERSPECTIVE SKETCHES

DIFFUSE FOCUS WORK



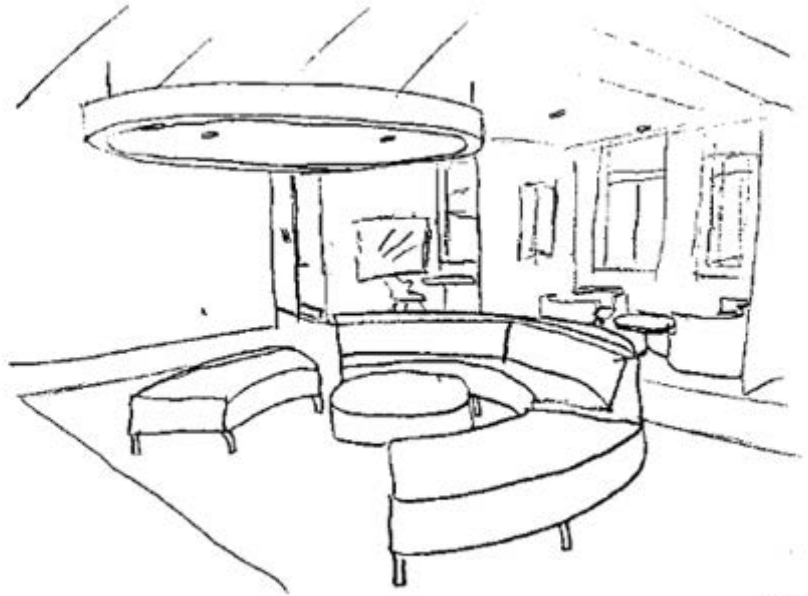
EDWARD THATCH DESIGN & CO.
AND
CLARENDON PROPERTIES



COREY EADS
SCHEMATIC MANAGER

D

ESIGN SKETCHES
DAYDREAMING



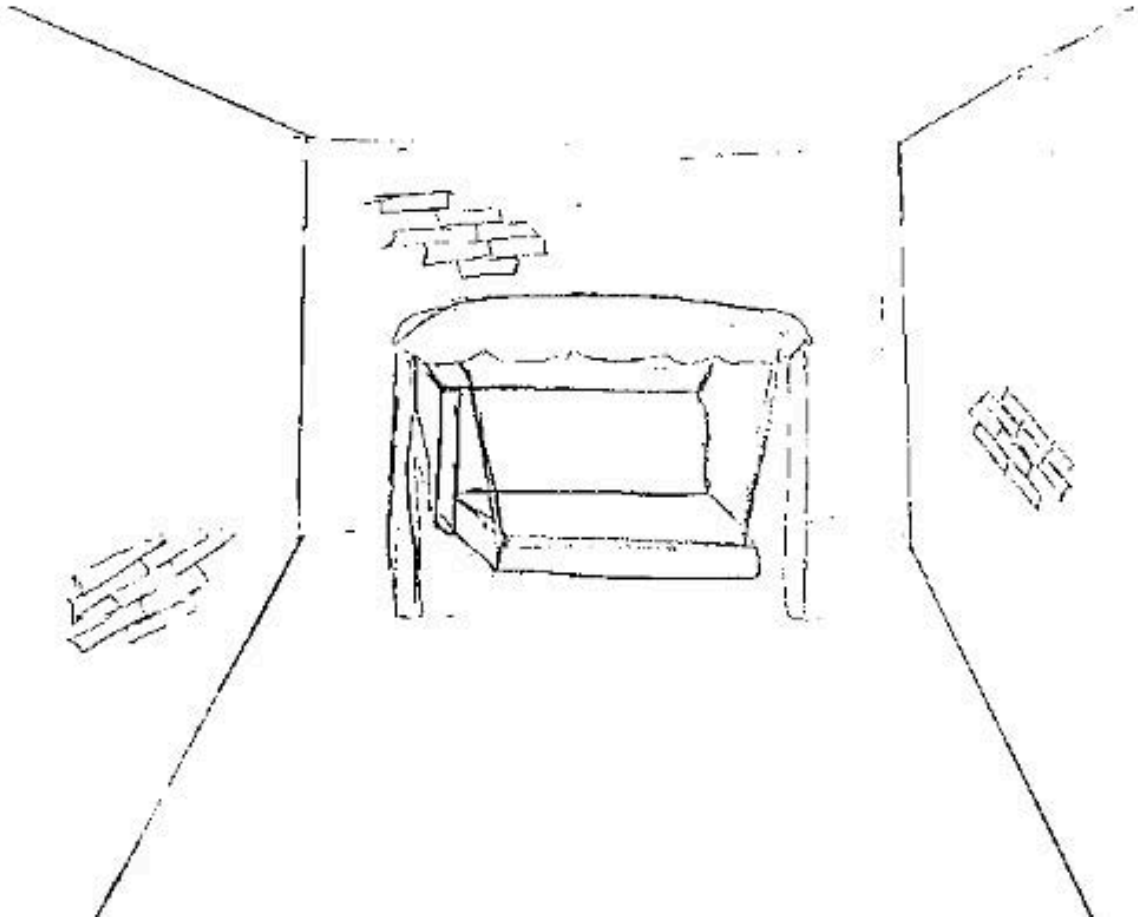
EDWARD THATCH DESIGN & CO.
AND
CLARENDON PROPERTIES

COREY EADS
SCHEMATIC MANAGER



PERSPECTIVE SKETCHES

DAYDREAMING



COREY EADS
SCHEMATIC MANAGER



D

ESIGN SKETCHES
GROUP PLANNING / MEETING



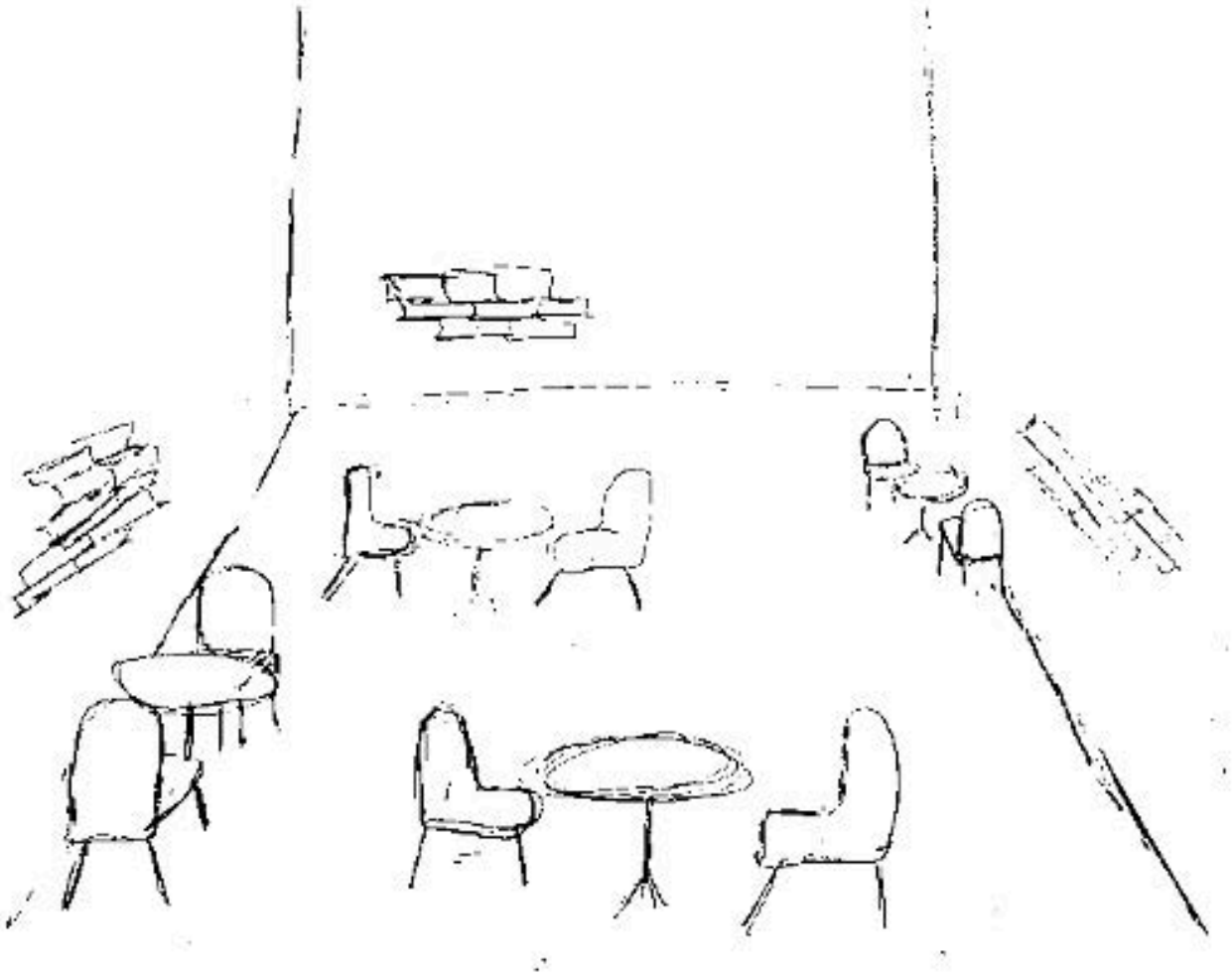
EDWARD THATCH DESIGN & CO.
AND
CLARENDON PROPERTIES



COREY EADS
SCHEMATIC MANAGER

PERSPECTIVE SKETCHES

GROUP PLANNING / MEETING



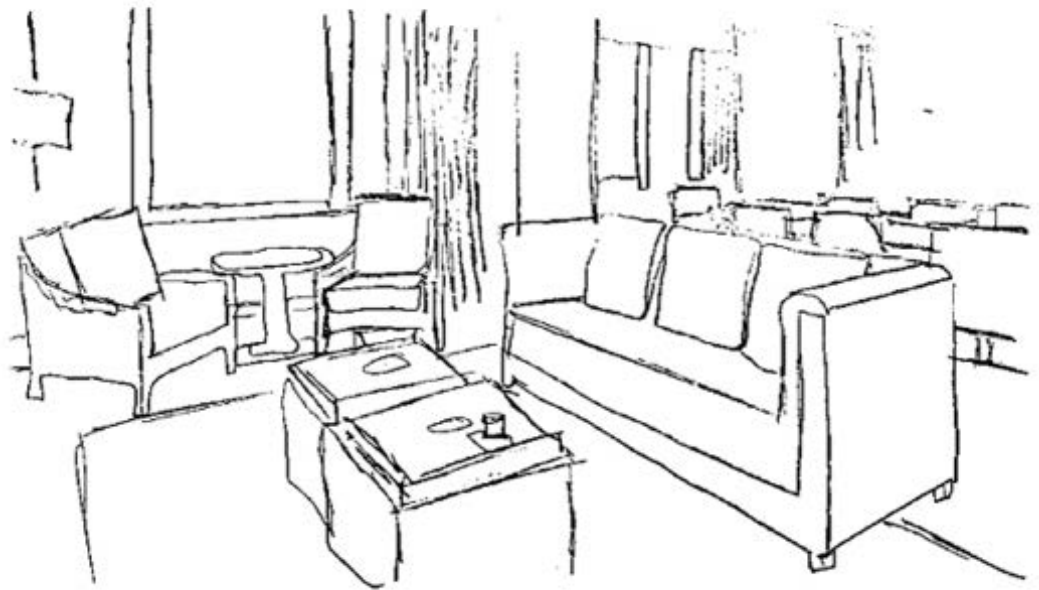
EDWARD THATCHER DESIGN & CO.
AND
CLARENDON PROPERTIES

COREY EADS
SCHEMATIC MANAGER



DESIGN SKETCHES

SOCIALIZING

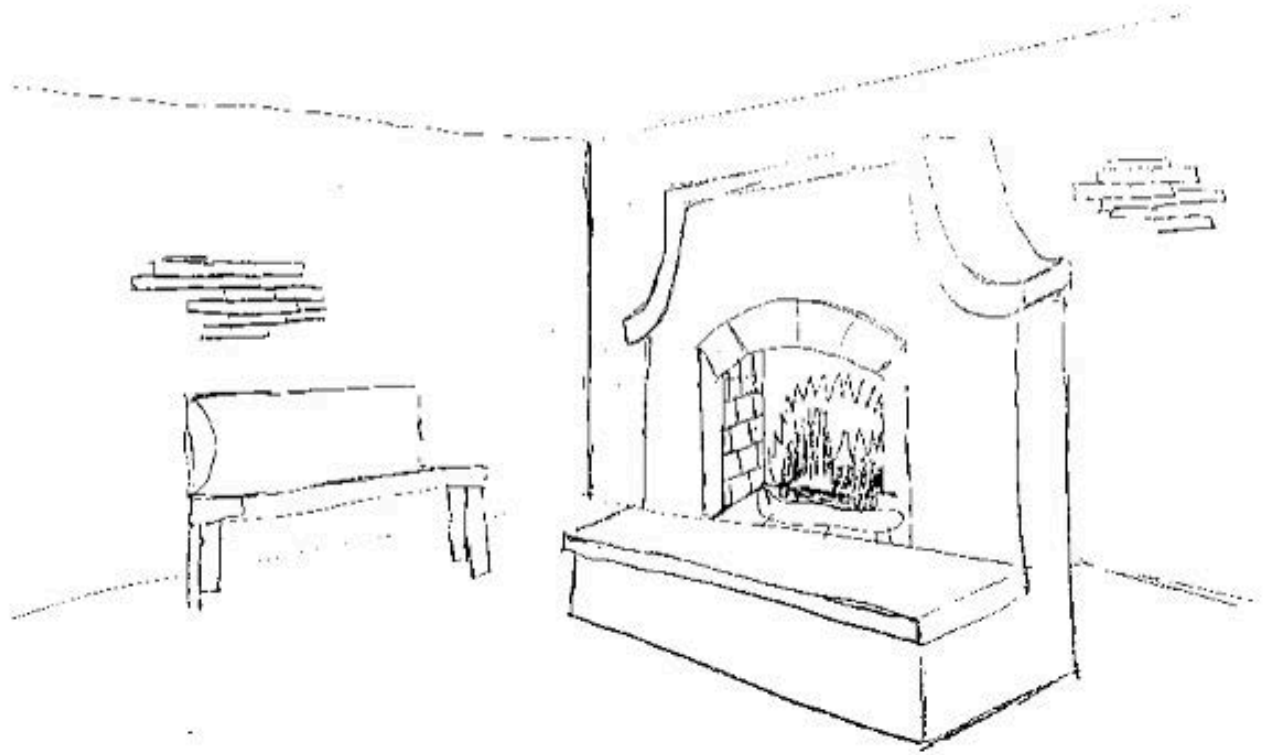


COREY EADS
SCHEMATIC MANAGER



PERSPECTIVE SKETCHES

SOCIALIZING



COREY EADS
SCHEMATIC MANAGER



D

ESIGN SKETCHES
DIFFUSE FOCUS WORK

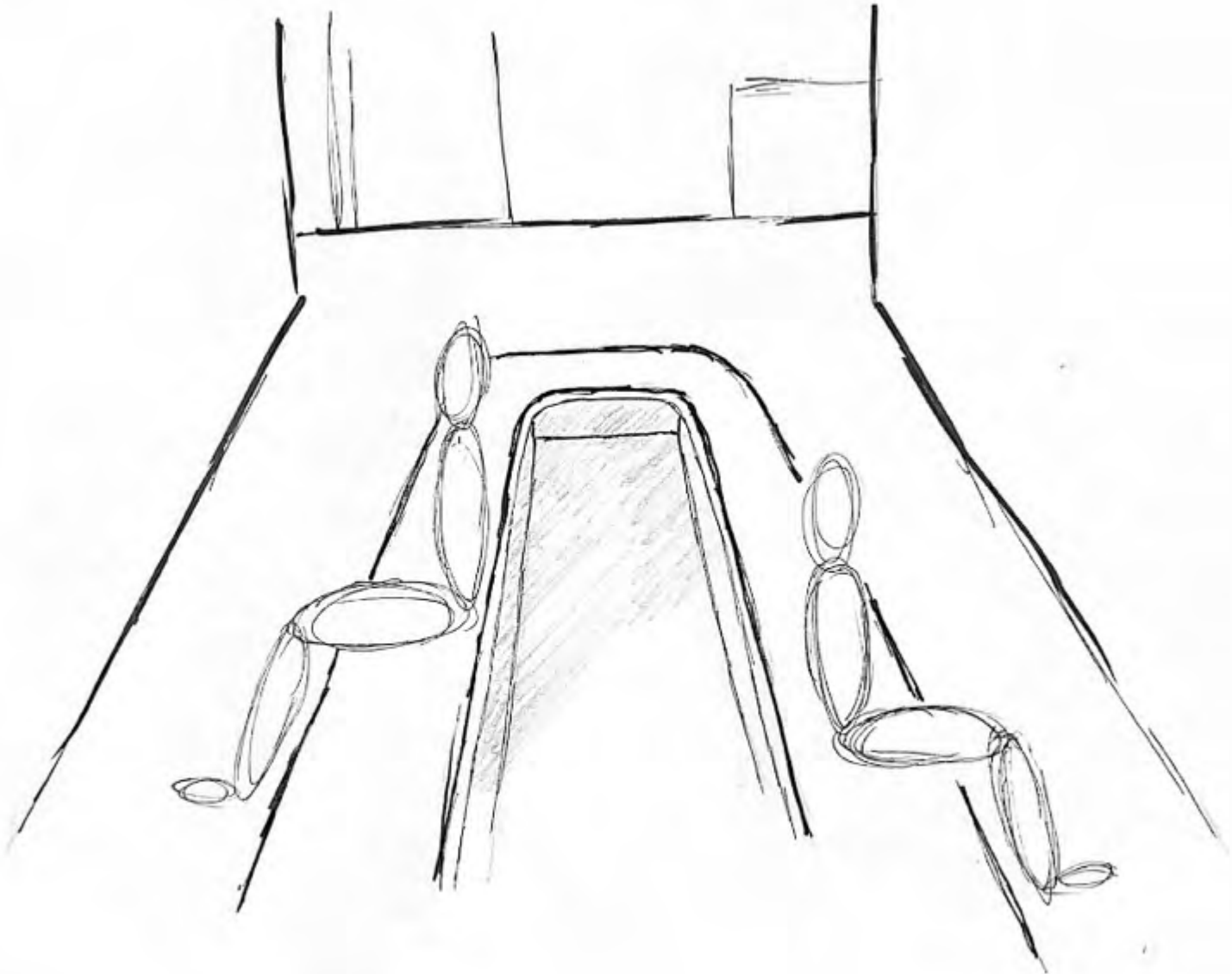


*M*CKENZIE LOVE
DESIGN MANAGER



PERSPECTIVE SKETCHES

DIFFUSE FOCUS WORK



EDWARD THATCH DESIGN & CO.
AND
CLARENDON PROPERTIES



*M*CKENZIE LOVE
DESIGN MANAGER

*D*ESIGN SKETCHES DAYDREAMING



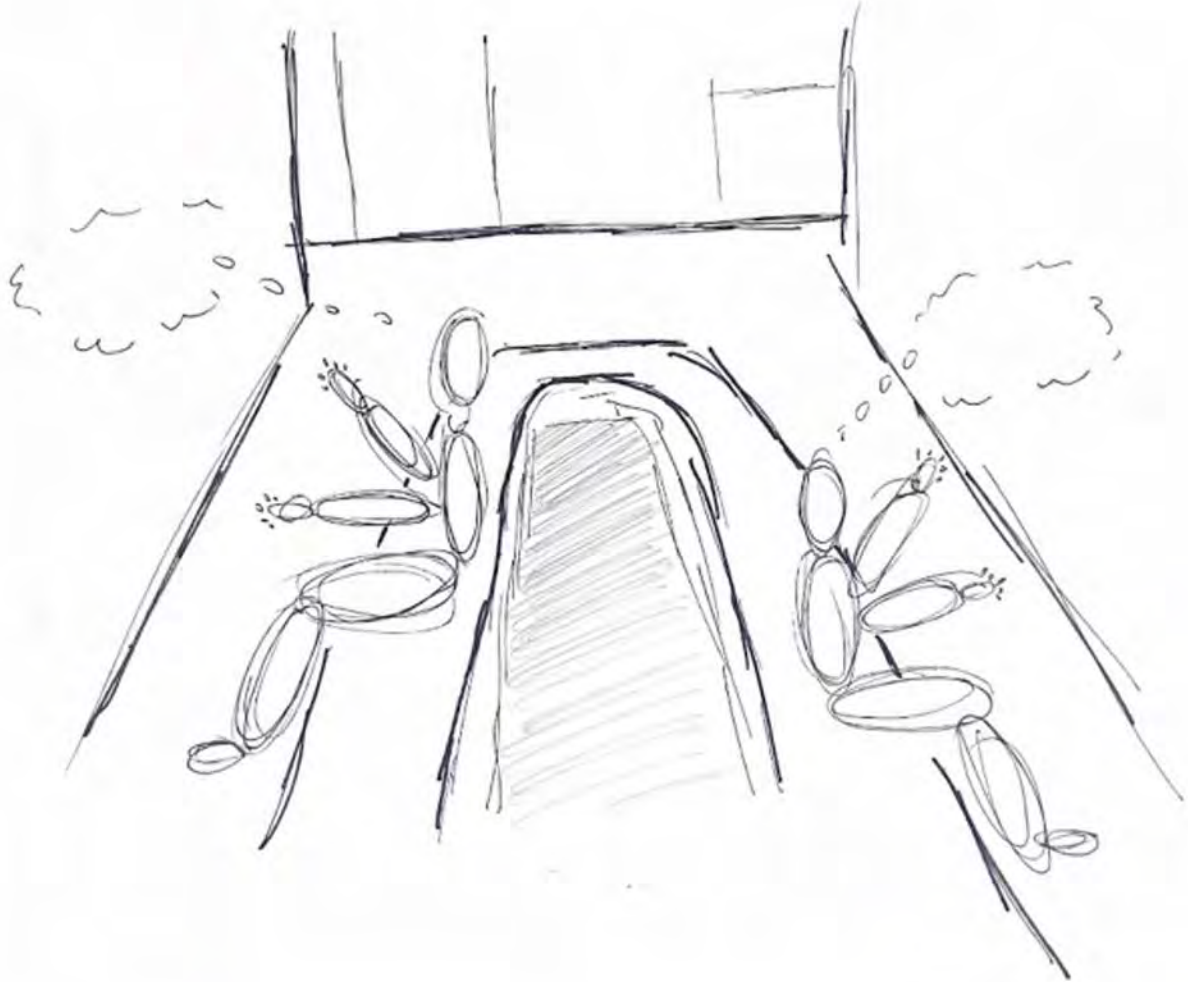
EDWARD THATCH DESIGN & CO.
AND
CLARENDON PROPERTIES



*M*cKENZIE LOVE
DESIGN MANAGER

PERSPECTIVE SKETCHES

DAYDREAMING



*M*CKENZIE LOVE
DESIGN MANAGER



*D*ESIGN SKETCHES

GROUP PLANNING / MEETING



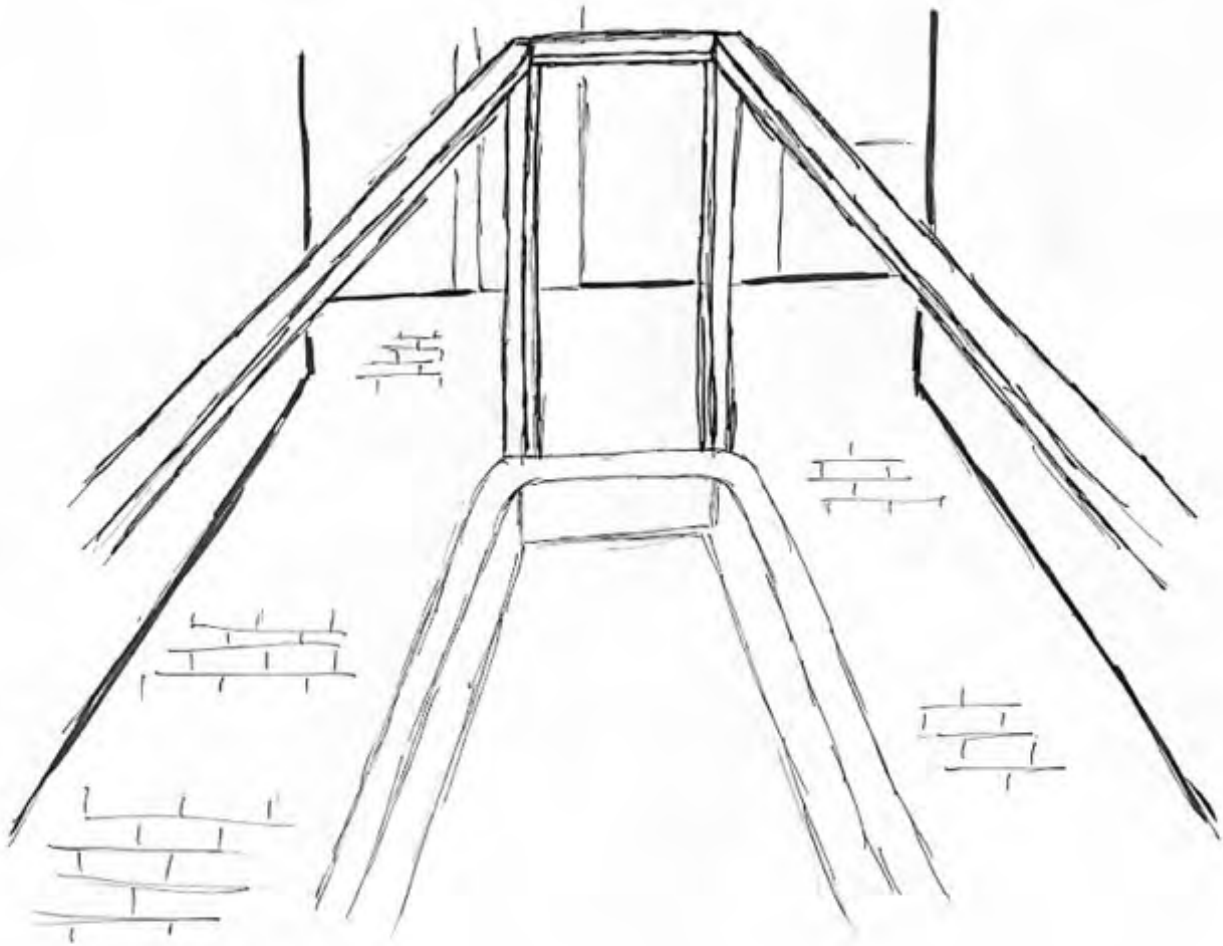
EDWARD THATCH DESIGN & CO.
AND
CLARENDON PROPERTIES



*M*CKENZIE LOVE
DESIGN MANAGER

PERSPECTIVE SKETCHES

GROUP PLANNING / MEETING



*M*CKENZIE LOVE
DESIGN MANAGER



D

ESIGN SKETCHES
SOCIALIZING

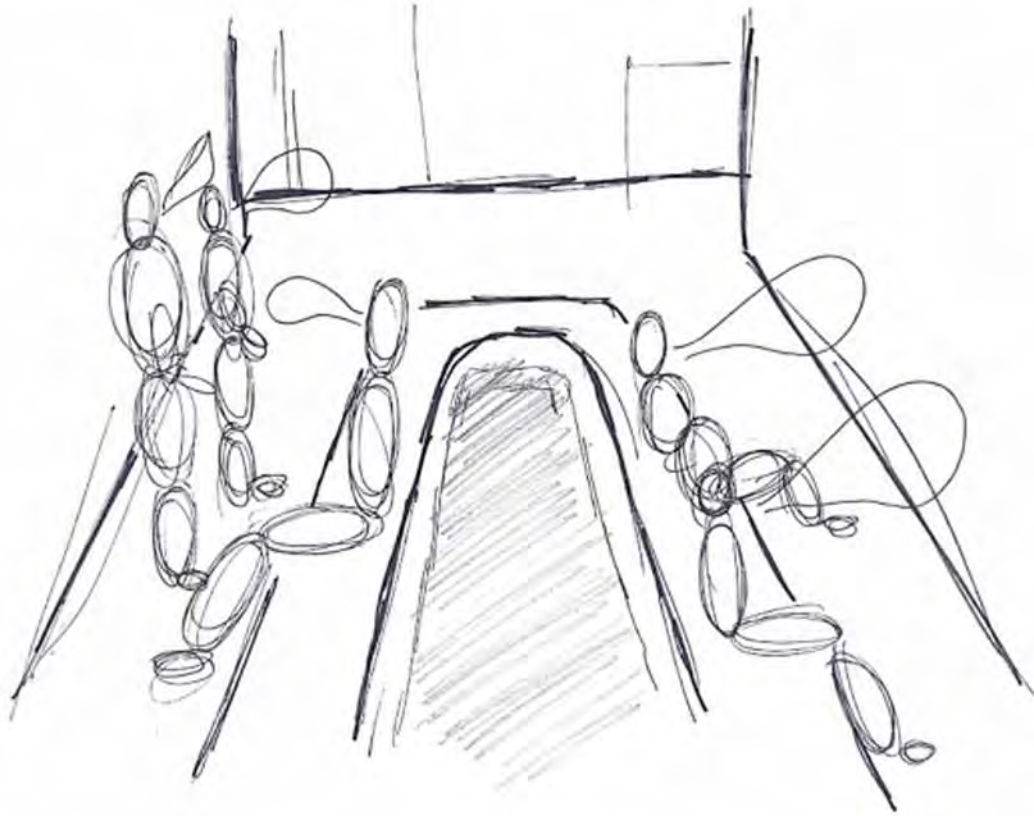


EDWARD THATCH DESIGN & CO.
AND
CLARENDON PROPERTIES



*M*CKENZIE LOVE
DESIGN MANAGER

PERSPECTIVE SKETCHES SOCIALIZING

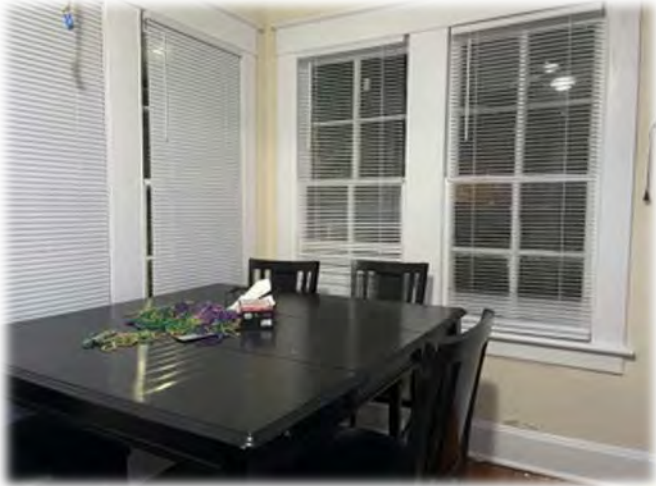


*M*CKENZIE LOVE
DESIGN MANAGER



D

ESIGN SKETCHES
DIFFUSE FOCUS WORK

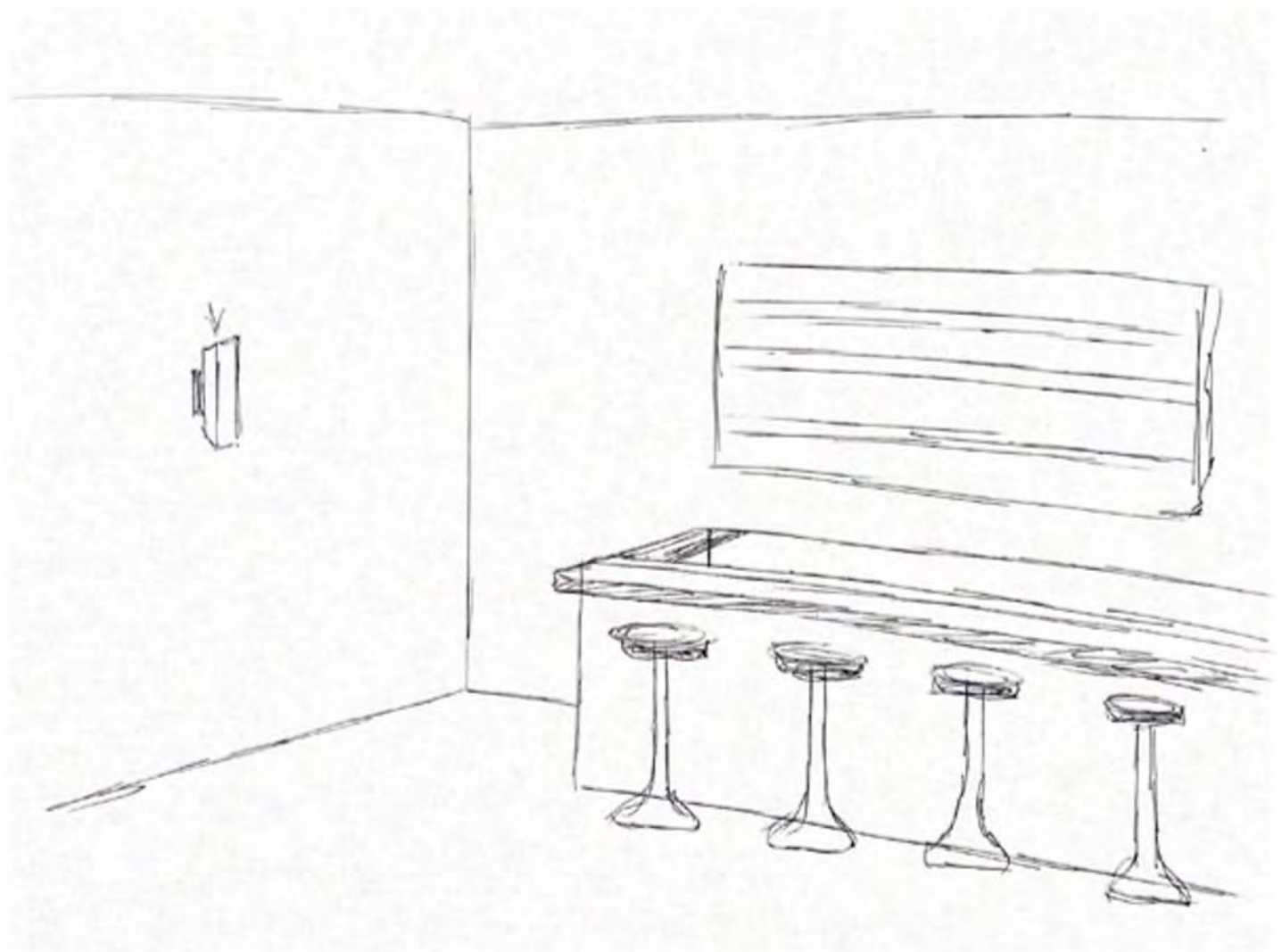


ELIZABETH BROWN
PROJECT MANAGER



PERSPECTIVE SKETCHES

DIFFUSE FOCUS WORK



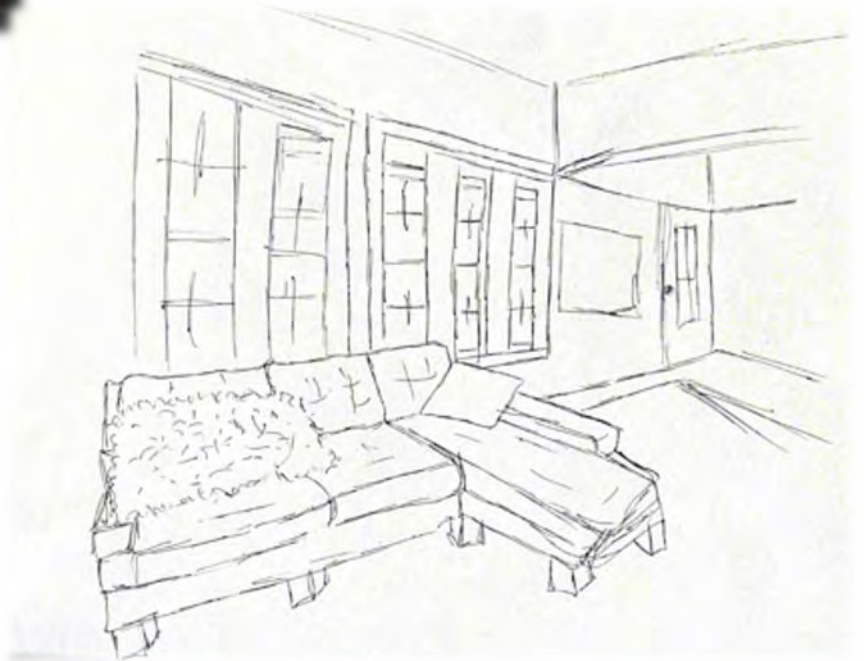
EDWARD THATCH DESIGN & CO.
AND
CLARENDON PROPERTIES



LIZABETH BROWN
PROJECT MANAGER

D

ESIGN SKETCHES
DAYDREAMING

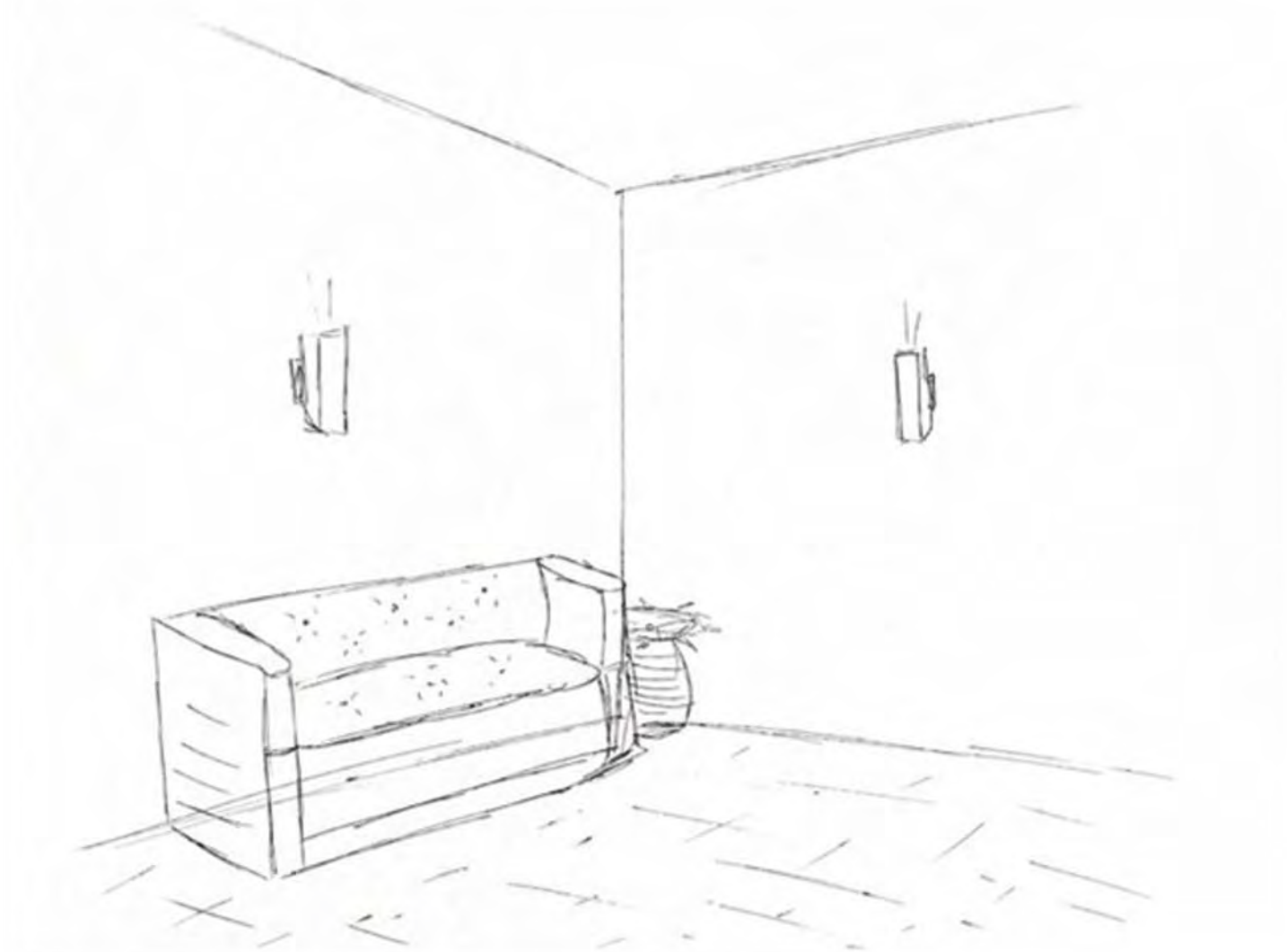


E LIZABETH BROWN
PROJECT MANAGER



PERSPECTIVE SKETCHES

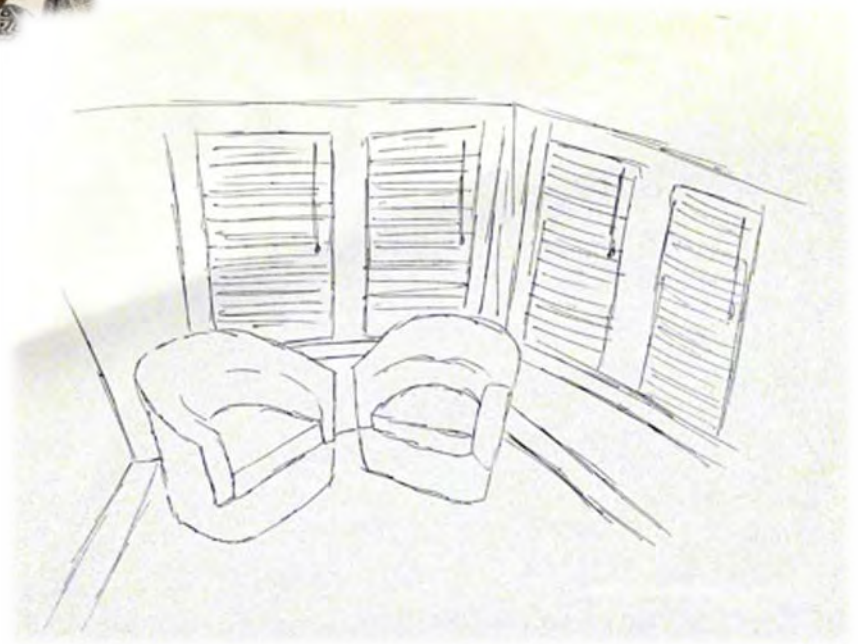
DAYDREAMING



ELIZABETH BROWN
PROJECT MANAGER



*D*ESIGN SKETCHES GROUP PLANNING / MEETING

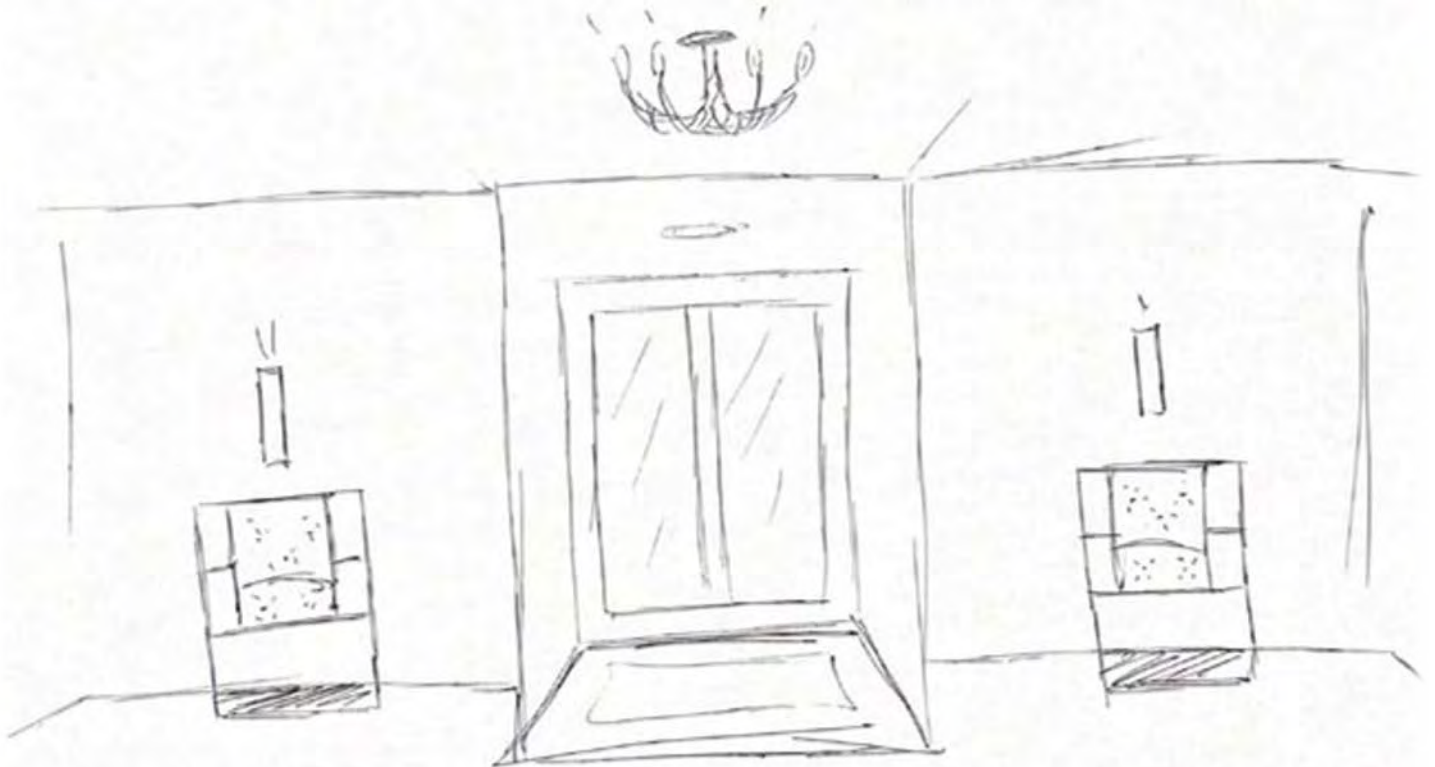


*E*LIZABETH BROWN
PROJECT MANAGER



PERSPECTIVE SKETCHES

GROUP PLANNING / MEETING



ELIZABETH BROWN
PROJECT MANAGER



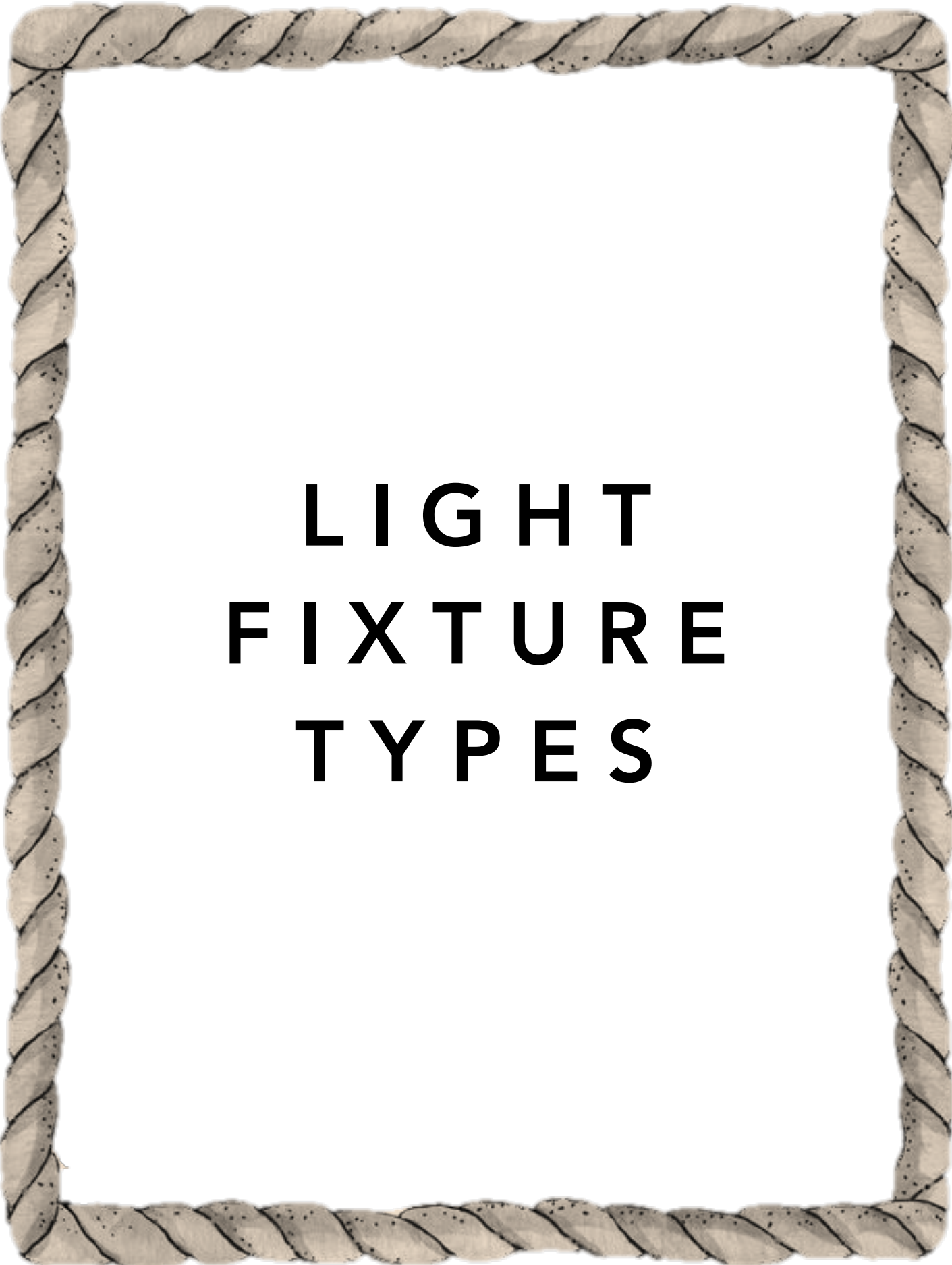
D

ESIGN SKETCHES
SOCIALIZING



E LIZABETH BROWN
PROJECT MANAGER





**LIGHT
FIXTURE
TYPES**

L

LOBBY LIGHT FIXTURE TYPES



STATEMENT: The fixtures shown above serves specifically for lighting purposes and wayfinding. There different rustic styled hanging fixtures and wall fixtures that tie into the design concept for this project.

E LIZABETH BROWN
PROJECT MANAGER



R

OOFTOP BAR LIGHT FIXTURE TYPES



STATEMENT: The goal for the above lighting is to provide the ambiance one would expect being on a ship. The light fixtures chosen will provide mood and ambient lighting. The finishes of the lighting fixtures also tie into the design theme of the Hotel.

SAMANTHA HEUMAN
LEADER AND COMMUNICATOR



B

ACK COURTYARD
LIGHT FIXTURE TYPES



STATEMENT: The above lighting for the back courtyard of the hotel serves wayfinding purposes, while accentuating the property's architectural and landscaping details.

*M*CKENZIE LOVE
DESIGN MANAGER



SIDE PATIO LIGHT FIXTURE TYPES



STATEMENT: Inspired by the hotels theme of ECU Pirates, the lighting fixtures and fire elements in the side patio will tie into the theme by inspiring the clients to get into the pirate spirit.

COREY EADS
SCHEMATIC MANAGER





**FURNITURE
INSPIRATION
AND
PALETTES**

L LOBBY FURNITURE





**LOBBY
FURNITURE (CONTINUED)**



STATEMENT: The furniture for this lobby are inspired from the design concept. Dark wood grains, leather seating such as the couch and chairs pictured above. Also while tying in pirate ship related items such as the table with the rope and ship wheel.

LIZABETH BROWN
PROJECT MANAGER



R

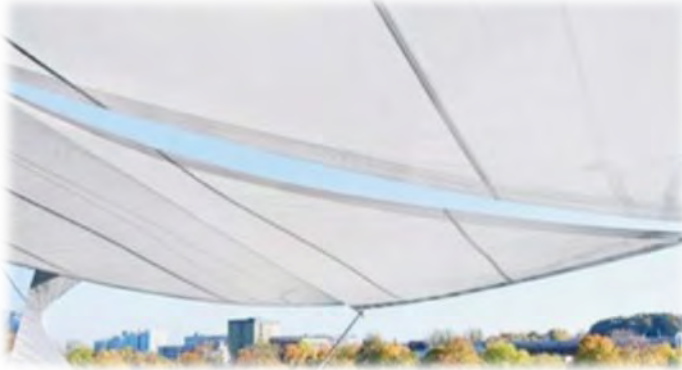
OOFTOP BAR
FURNITURE



S AMANTHA HEUMAN
LEADER AND COMMUNICATOR

R

ROOFTOP FURNITURE (CONTINUED)



STATEMENT: The goal for the proposed furniture used on the rooftop bar is to give off the atmosphere of being on a ship. The use of neutral color woods and prevalence of blue fabrics and finishes will transport the patron's sense to the atmosphere of a pirate ship. The furniture and finishes selected tie together the overall design theme while giving the patrons a sense of calmness and tranquility one might find out at sea.

SAMANTHA HEUMAN
LEADER AND COMMUNICATOR



B

ACK COURTYARD
FURNITURE



B

ACK COURTYARD FURNITURE (CONTINUED)



STATEMENT: The goal for the proposed back courtyard "furniture" is to allow for some structured seating, structured in a way that the area and furnishings are less likely to be misused or mistreated. Providing wide enough edges around the fountain and planters will give the user a place to rest for shorter periods of time, but doesn't appear as an overwhelmingly comfortable arrangement for longer durations. There is some consideration of movable furniture pieces, including repurposing an old boat / ship. However, securing these items would be necessary.

*M*CKENZIE LOVE
DESIGN MANAGER



SIDE PATIO FURNITURE



COREY EADS

SCHEMATIC MANAGER

SIDE PATIO FURNITURE (CONTINUED)



STATEMENT: The goal of the furniture on the side patio is to provide well designed seating for clients and have enough space for way finding throughout the area in case of emergency. Those seating options are appropriate for the side patio as they relate to the pirate theme and are perfect for outdoors.

COREY EADS
SCHEMATIC MANAGER





*D*ESIGN STATEMENT CHALLENGE AND RESOLUTION

Lobby: Elizabeth

- One challenge that occurred while designing the lobby area for the Hilton Hotel was mainly focusing on keeping the same layout Hilton had originally planned.
 - Furniture placing
 - Lighting specifications
 - Decorating specifications

Rooftop Bar: Samantha

- One challenge that was faced while designing the rooftop bar was optimizing the space available for patrons to use while also designing a space that gave the illusion of privacy and maintained the theme for the rooftop bar atmosphere.

*Q*UESTIONS?



*T*HANK *Y*OU

SINCERELY,
THE
EDWARD THATCH DESIGN & CO.
TEAM