



CR

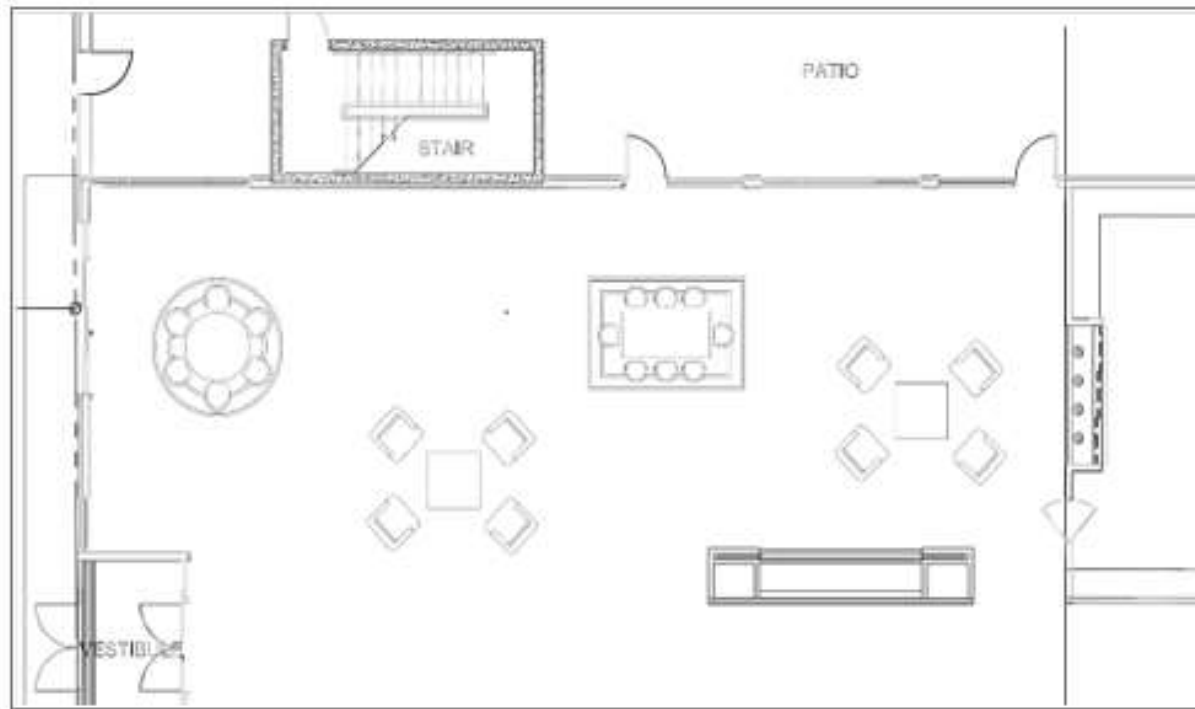
INTERIORS

PORTFOLIO #2

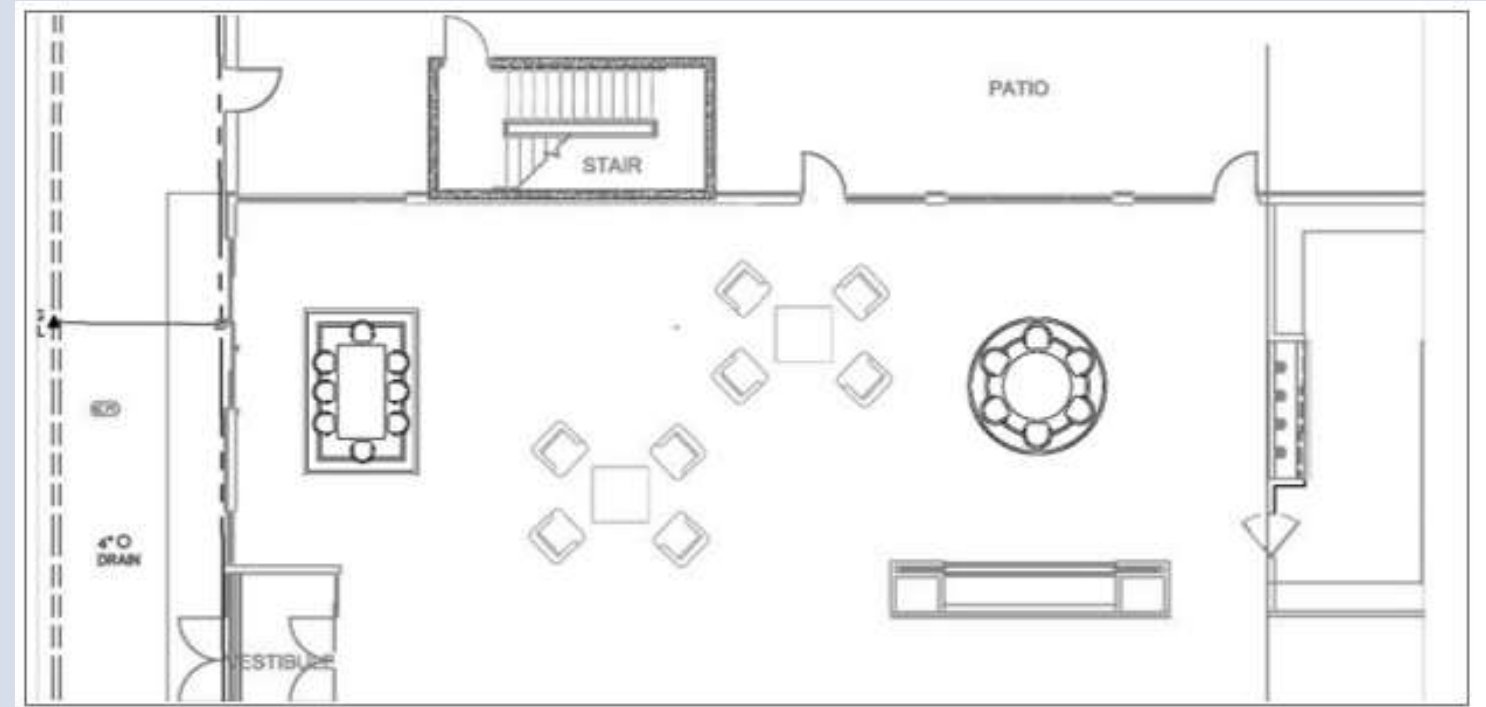


CLARENDON
PROPERTIES

LOBBY & LOUNGE - PLANS



Option #1



Option #2



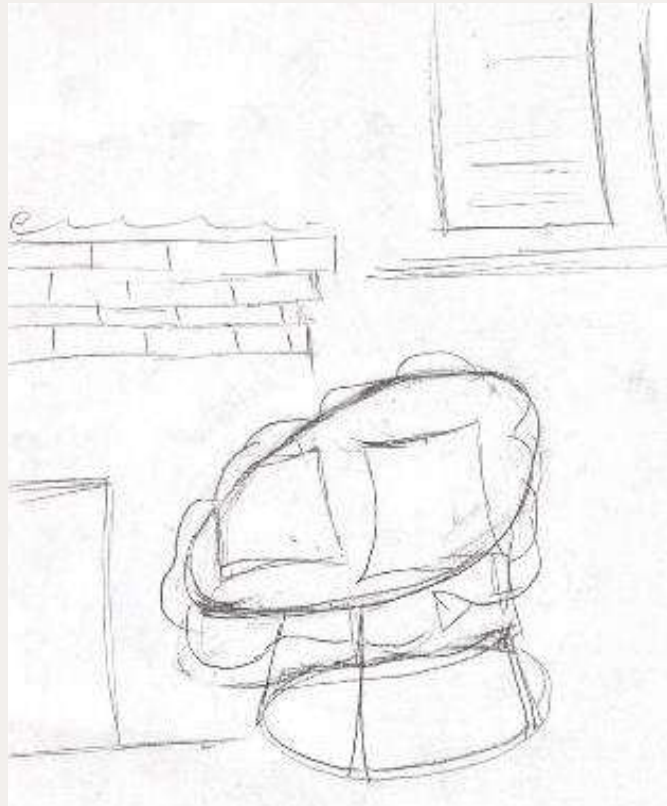
Option #3



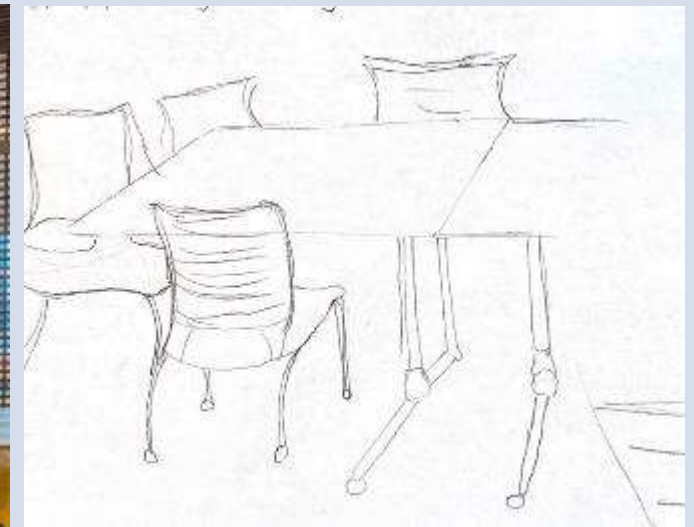
Option #4

not to scale

SPACIAL CONCEPT SKETCHES



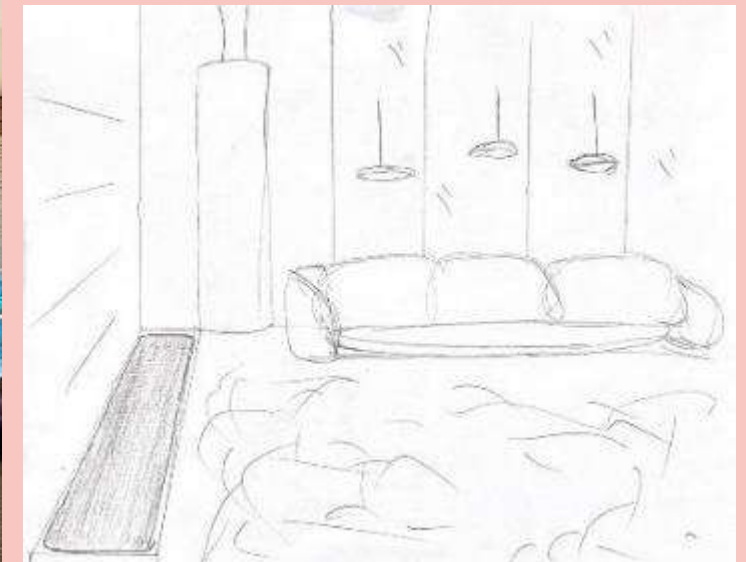
Diffuse Focus Work



Group Planning/
Meeting

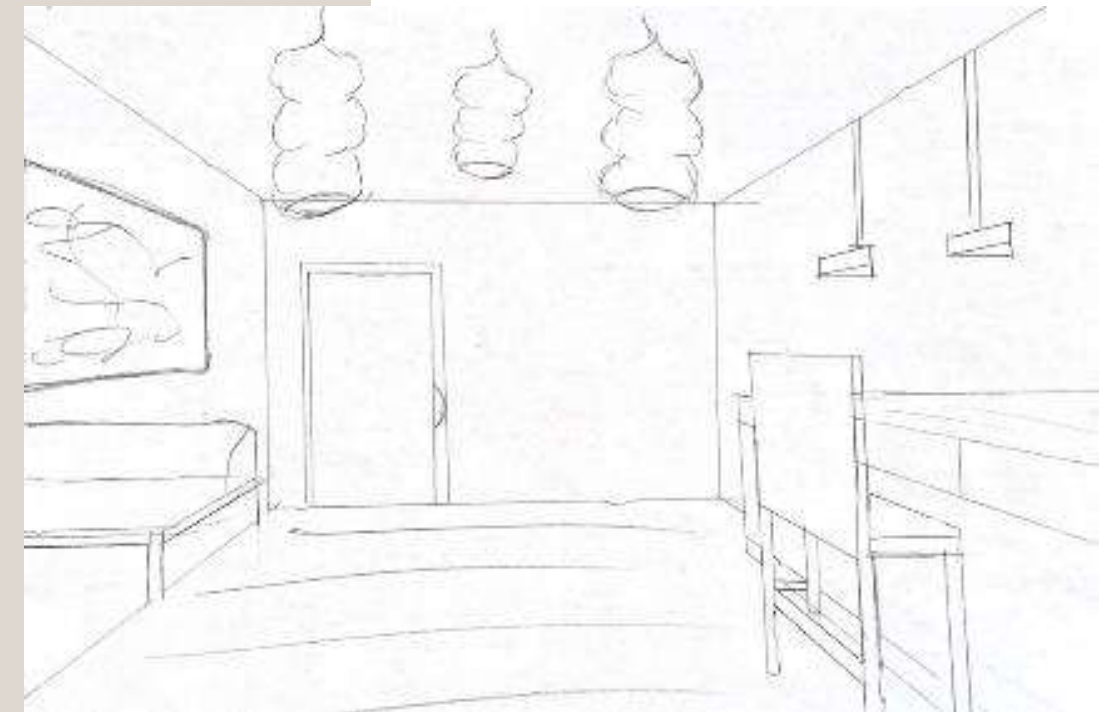
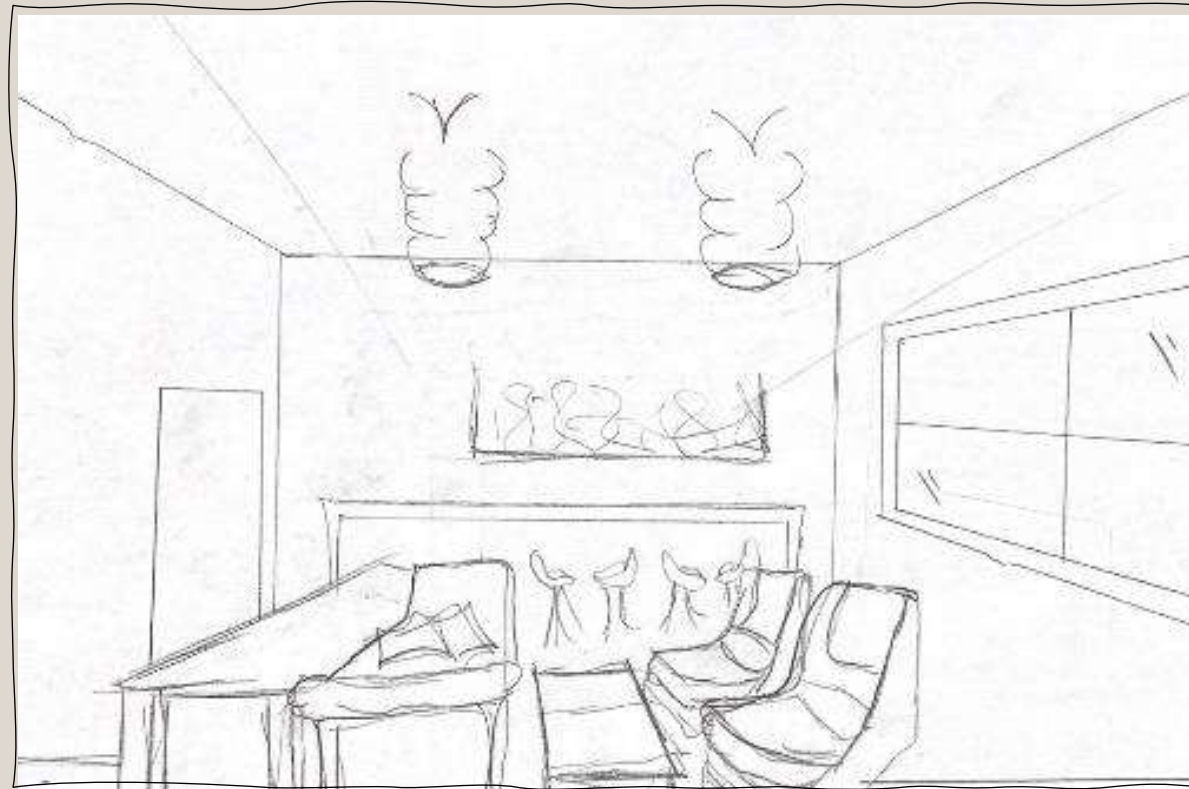
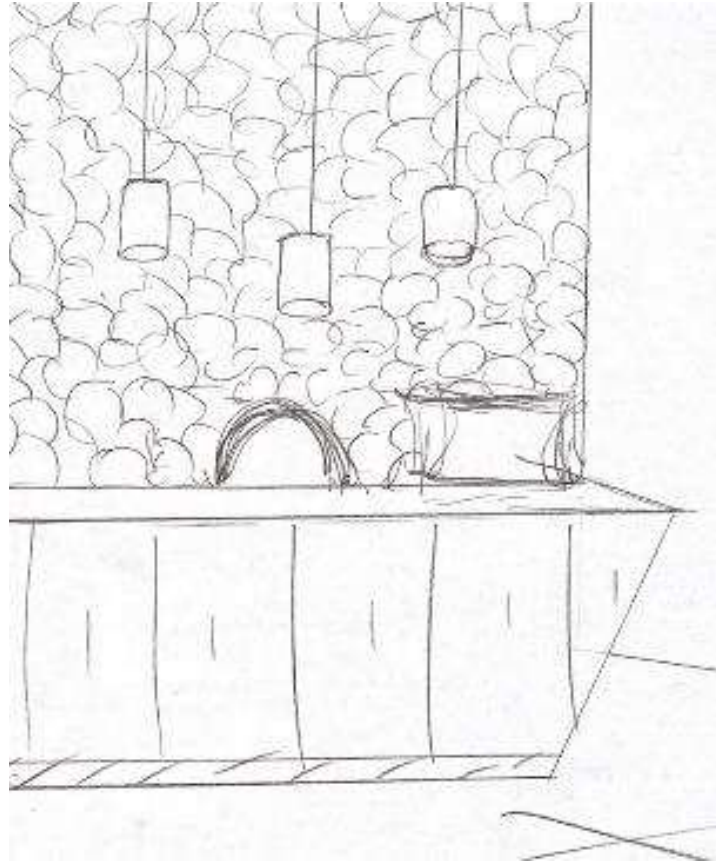


Daydreaming



Socializing

SPATIAL CONCEPT SKETCHES



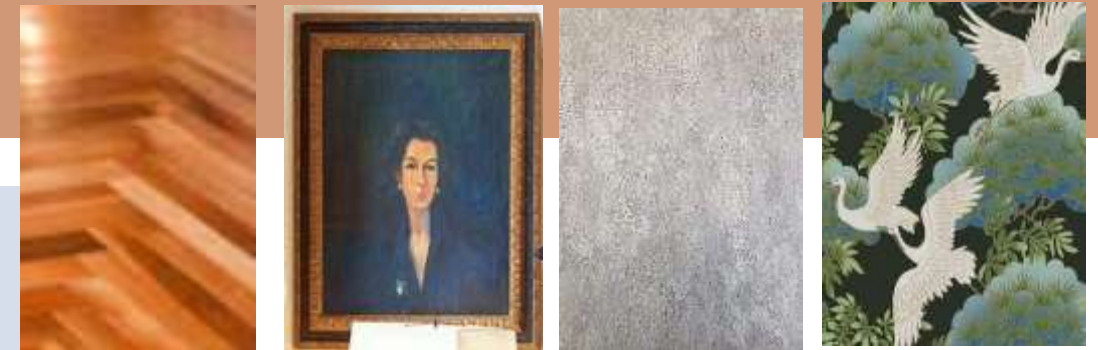
Lobby & Lounge

LOBBY & LOUNGE

Furniture, & Finish Pallets



Maximizing Space –Allowing for optimal seating/clear space to allow maximalism to thrive.



Color Concept – A blend of wood tones with blue accents. Followed by various patterns and textures throughout – but still staying consistent with the color. Wood and blue tones will make an easy transition from the indoors to the outside and vice versa.



Luminaires/Lighting – Creating a drastic light in the lobby entrance will allow for a prominent lighting source as well as a luxurious welcoming feel.

Lamps and recessed lighting with flow throughout the space in ceiling – following by creative flush mount lighting.

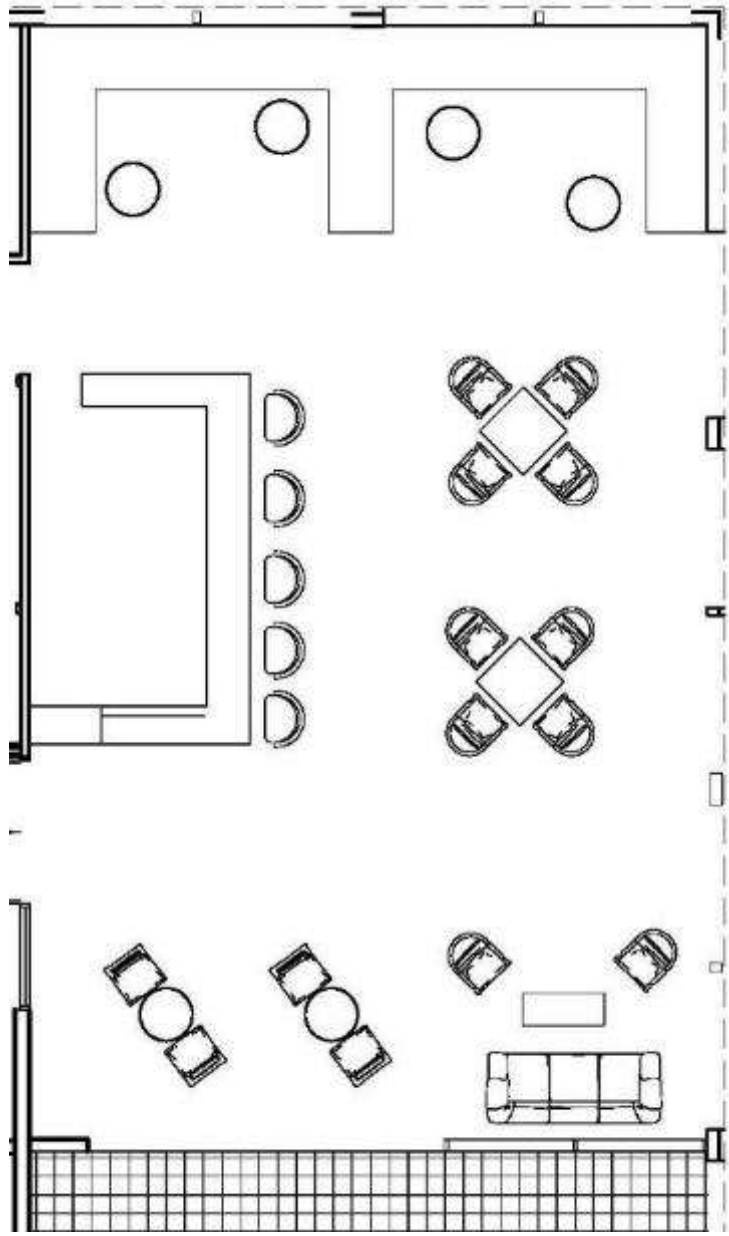


Wayfinding – Clear pathways followed with maximalism décor, accents, and flow.

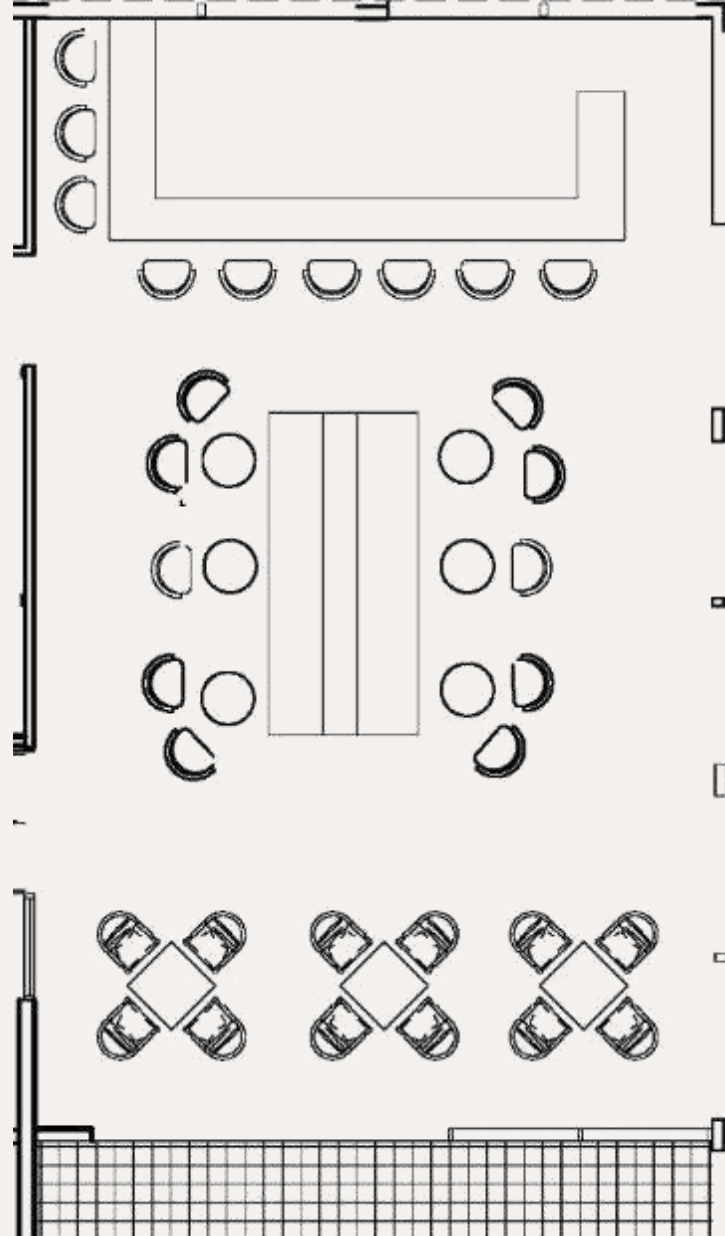
Clear direction of art and furniture placement.

ROOFTOP BAR - PLANS

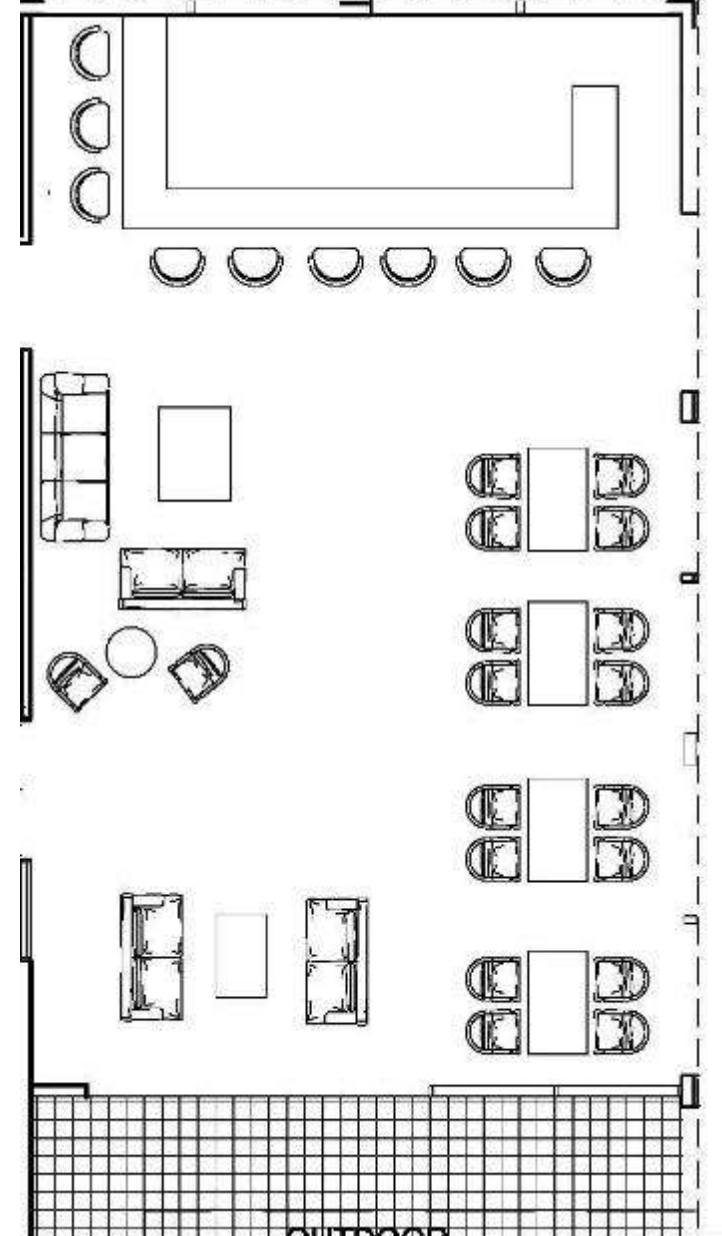
not to scale



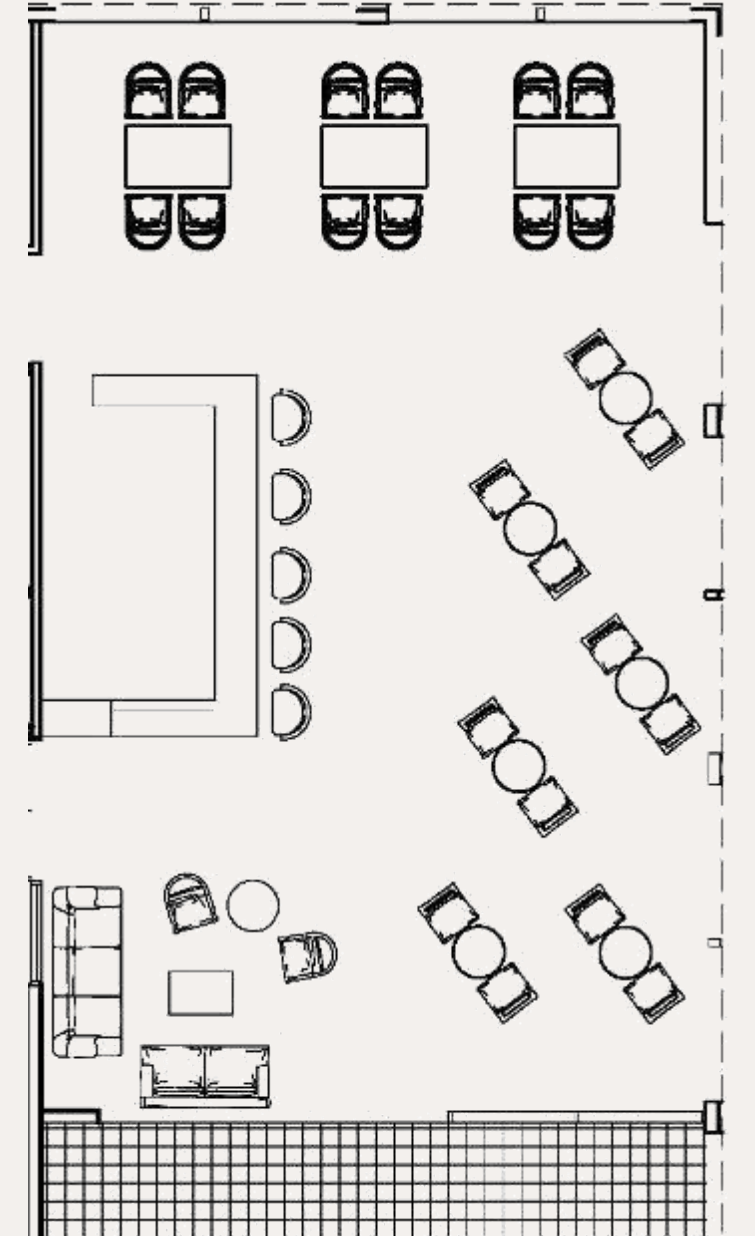
Option #1



Option #2



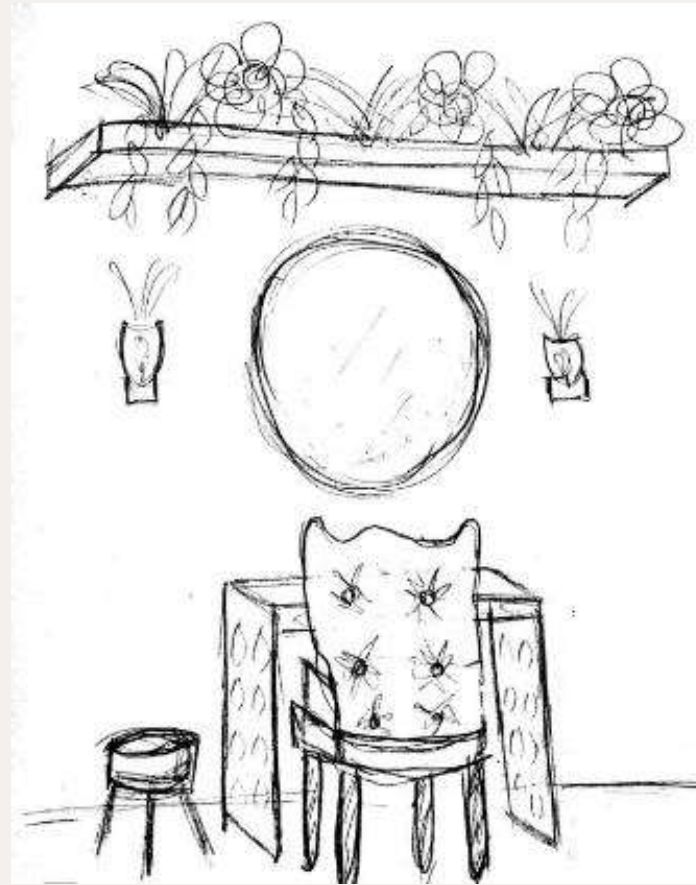
Option #3



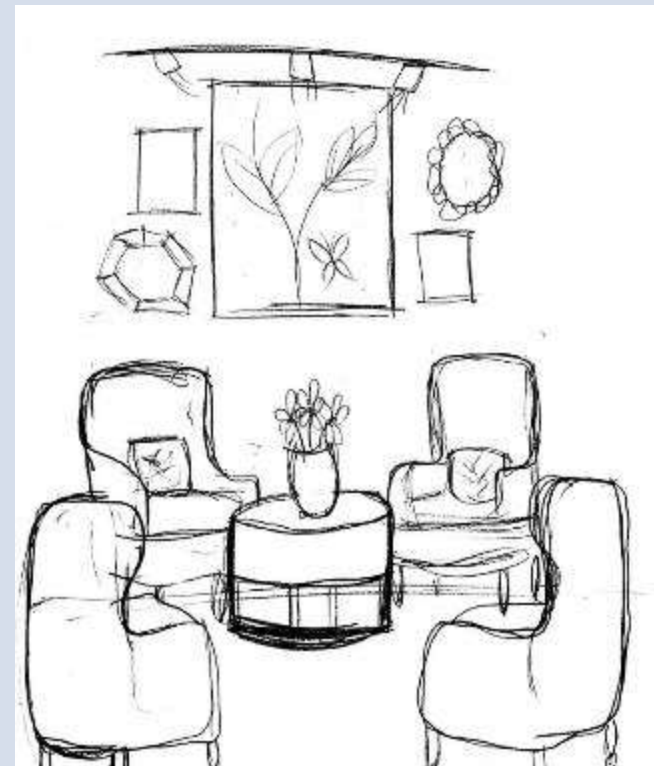
Option #4



SPACIAL CONCEPT SKETCHES



Diffuse Focus Work



Group Planning/
Meeting

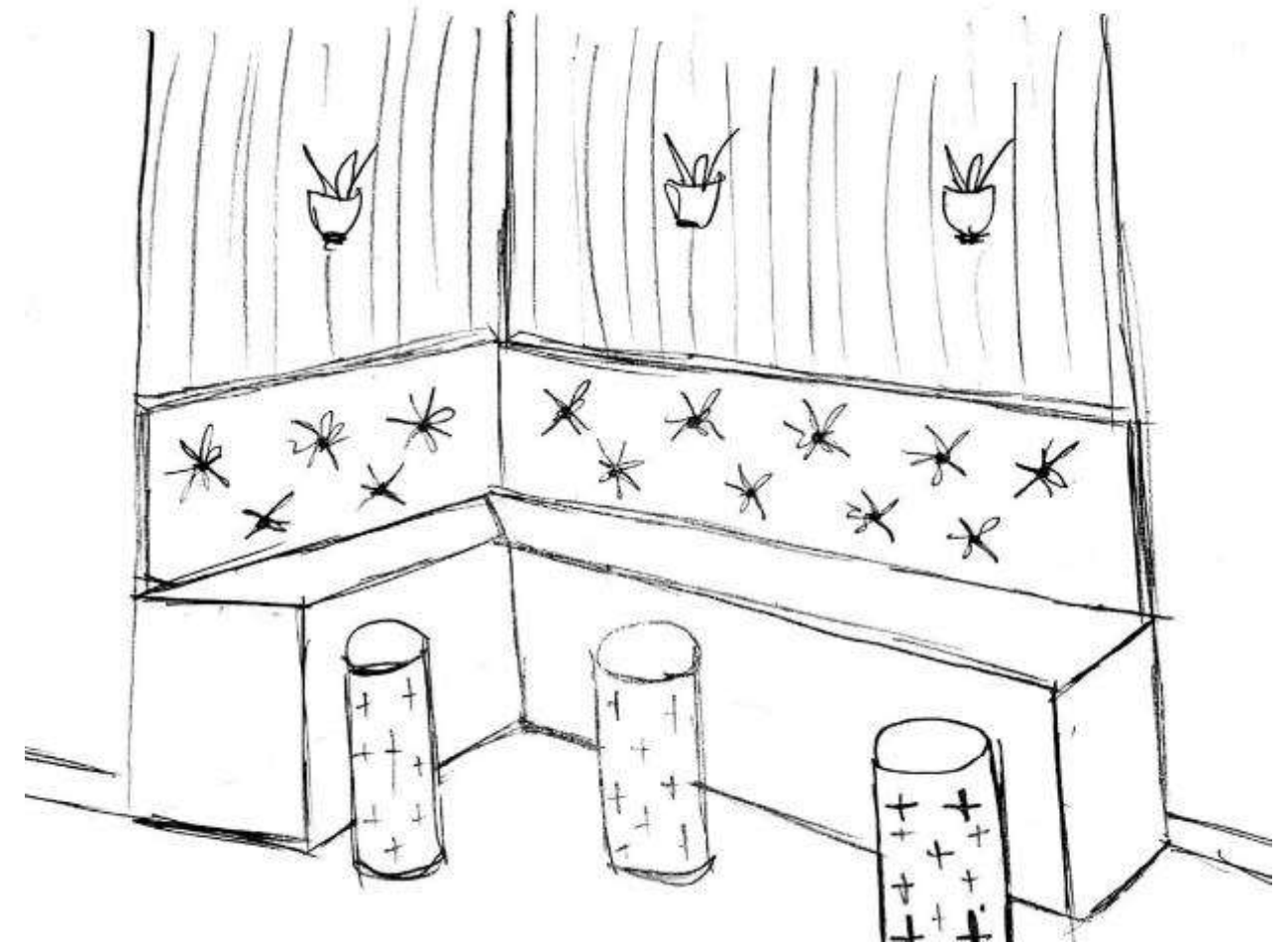


Daydreaming



Socializing

DESIGN SKETCHES



Rooftop Bar

ROOFTOP BAR

Furniture, & Finish Pallets



Color Concept

This space combines several complementary color schemes that attract visitors with its vibrant nature. The majority of the space will use neutral colors on the base with pops of color incorporated everywhere. Plants and natural textures added will round out the design. Maximalism is all about layering.



The design of the rooftop bar area brings a sense of luxury that other businesses in Greenville do not get the opportunity to offer. The lighting offers an intimate night life experience, and the color palette leaves people feeling inspired. The first rooftop bar of its kind, for Pirates by Pirates.

Luminaires and Lighting

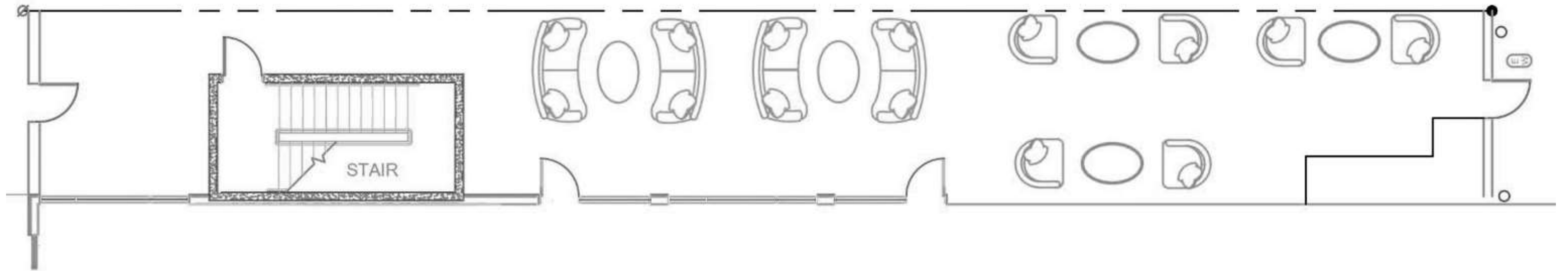
Ambient light will be the star feature of the rooftop bar. Using pendant lighting, wall sconces, and a technique of back lighting the furniture with LEDs, these will enhance the moody and inviting feeling of the space. The goal is to get people to want to explore the area and stay longer.

Wayfinding

The bar is the axis of the design. Furniture will be placed around the bar to make it easy for customers to get a drink and be able to find a seat.

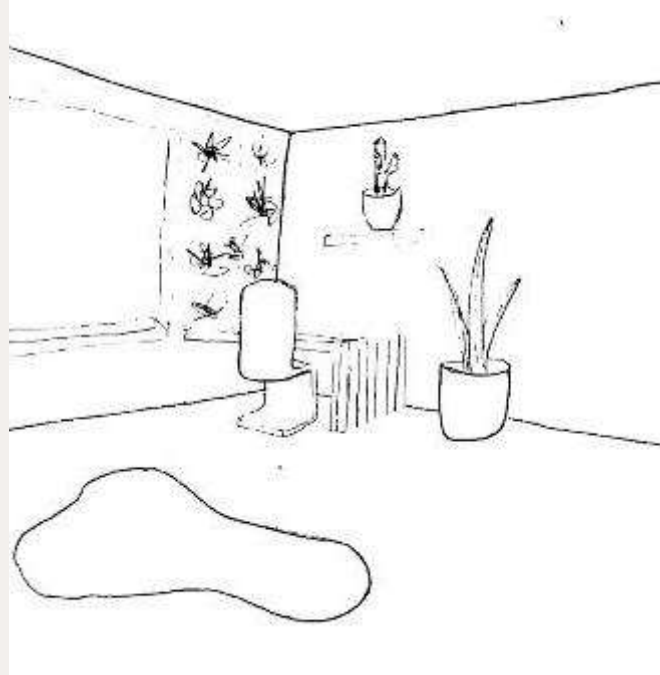


LOBBY & LOUNGE - PLANS

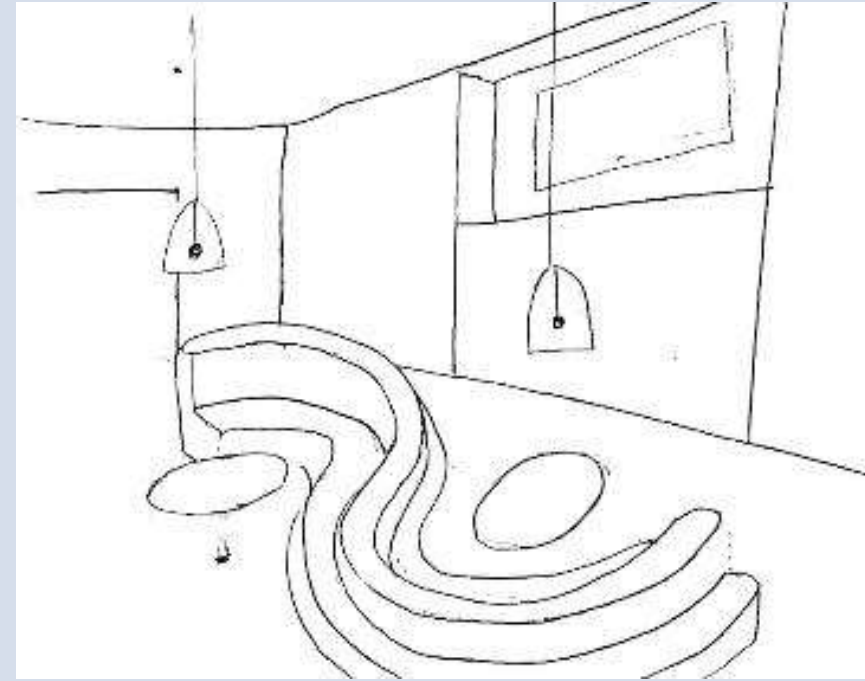


not to scale

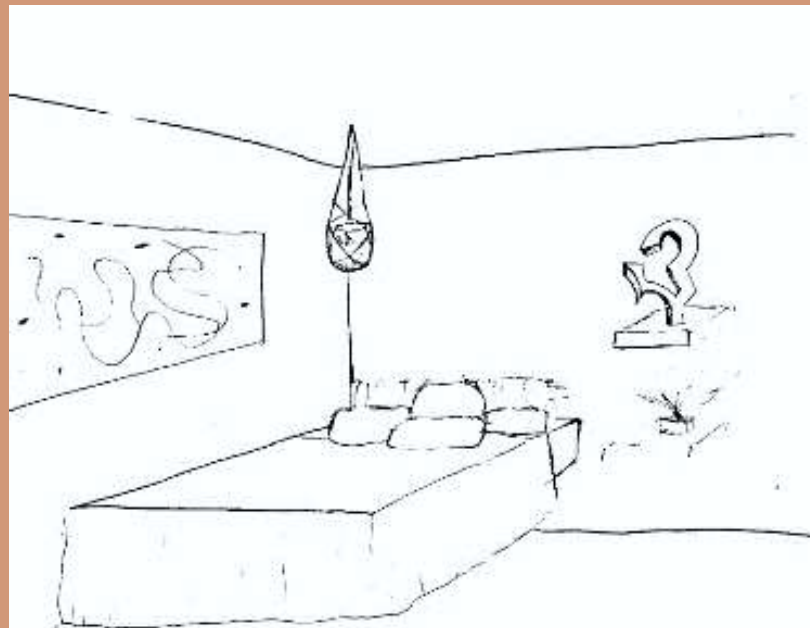
SPACIAL CONCEPT SKETCHES



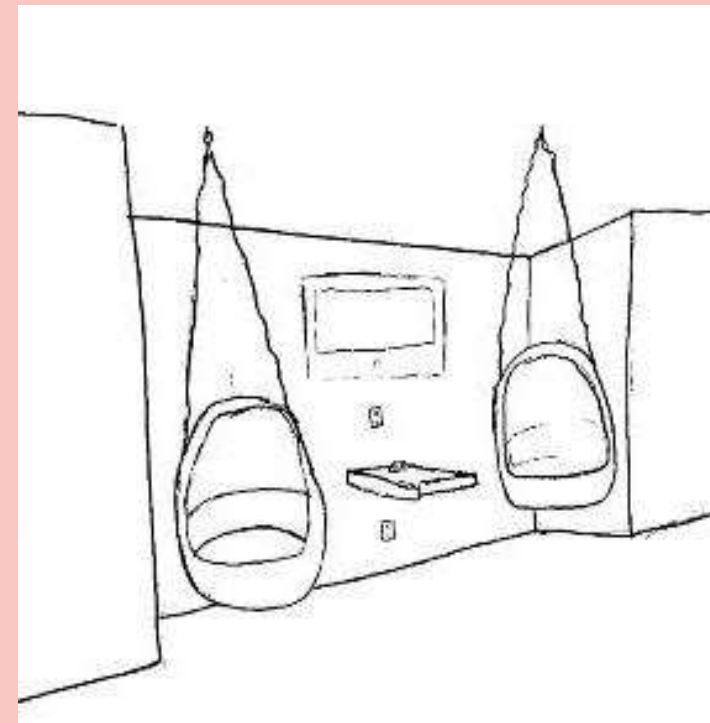
Diffuse Focus Work



Group Planning/
Meeting

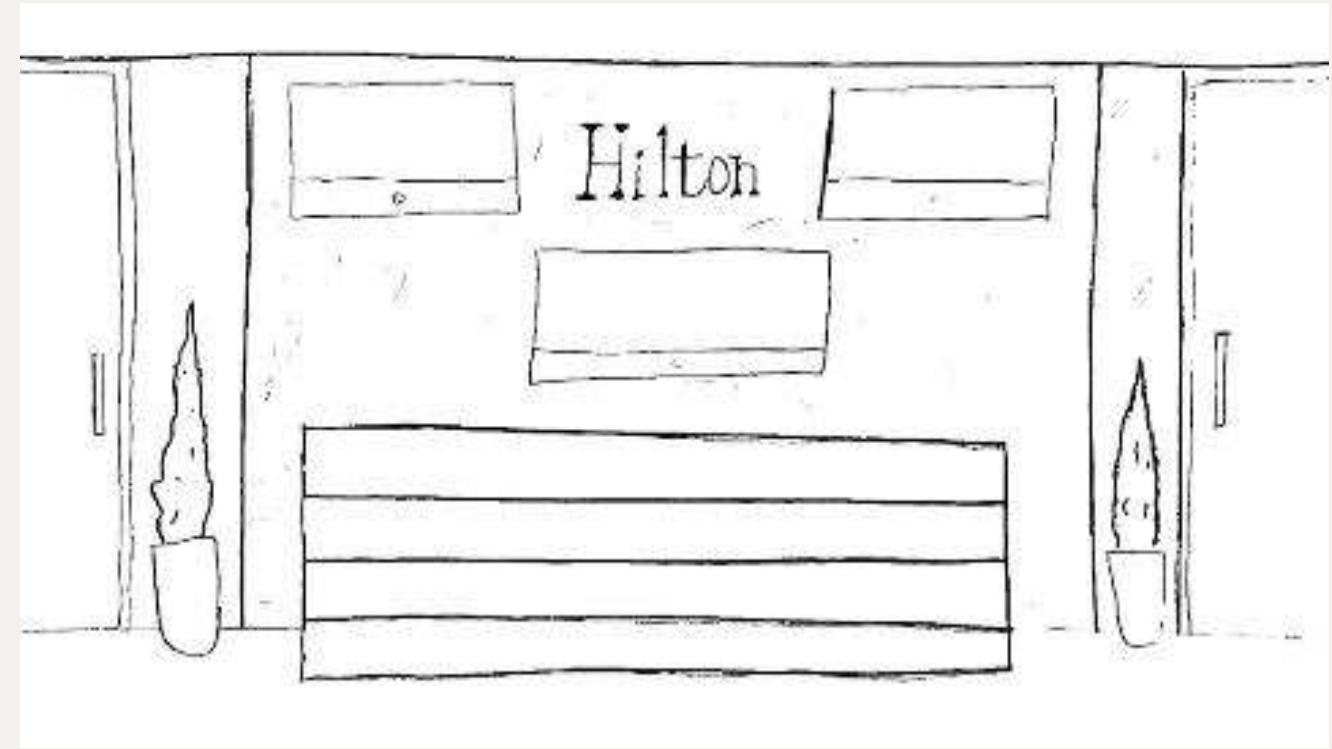
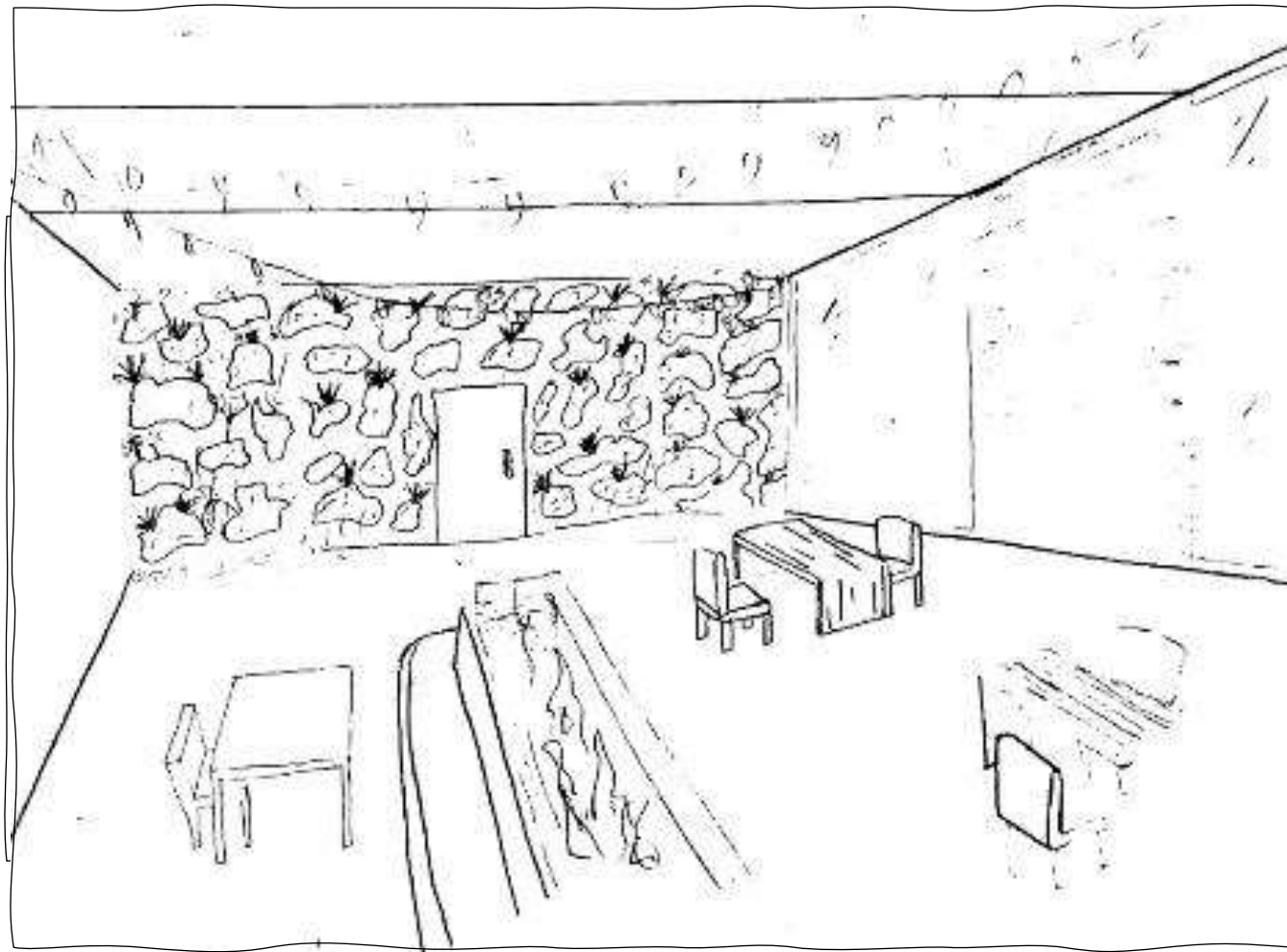


Daydreaming

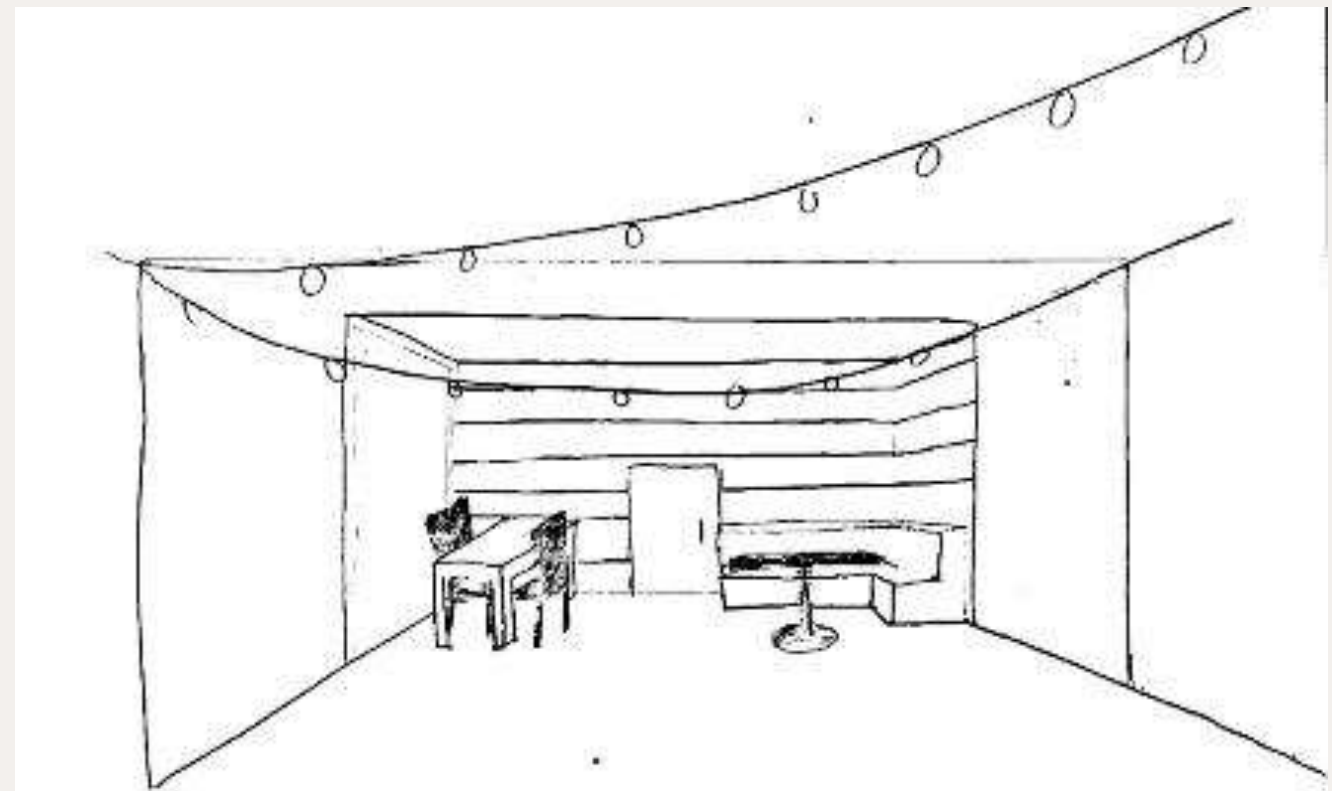


Socializing

DESIGN SKETCHES



Side Patio



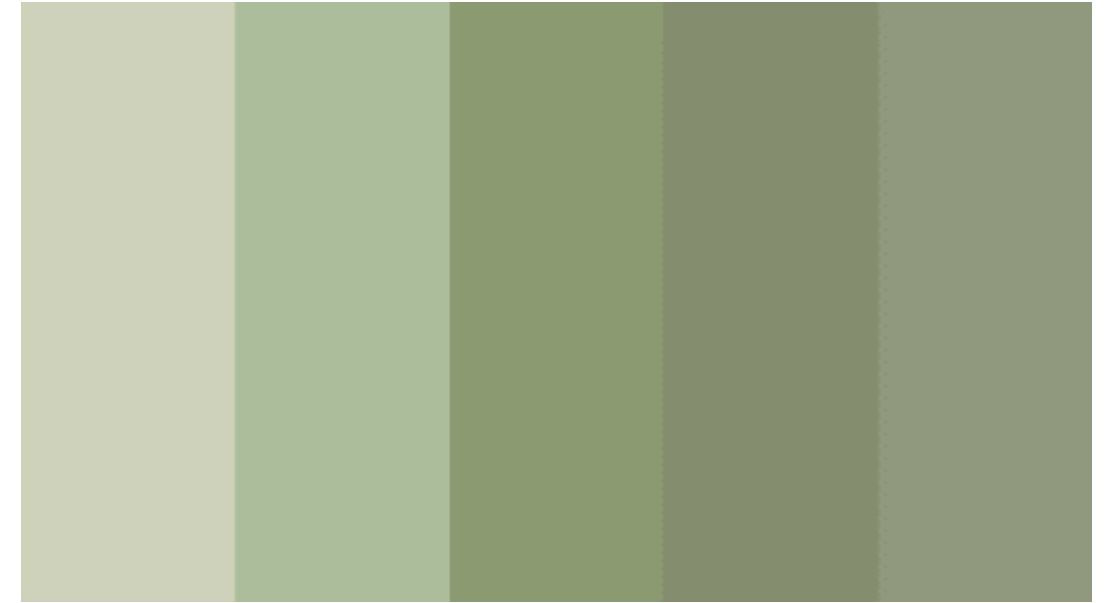
SIDE PATIO

Luminaires – String lights give a good sense of wayfinding and help navigate through the space. Recessed lighting as well as some hanging light fixtures were added to illuminate the area.

Lighting Finishes – Most of the finishes are hidden along the borders of the ceiling. Most notable are the string lights that drape across the whole patio area.

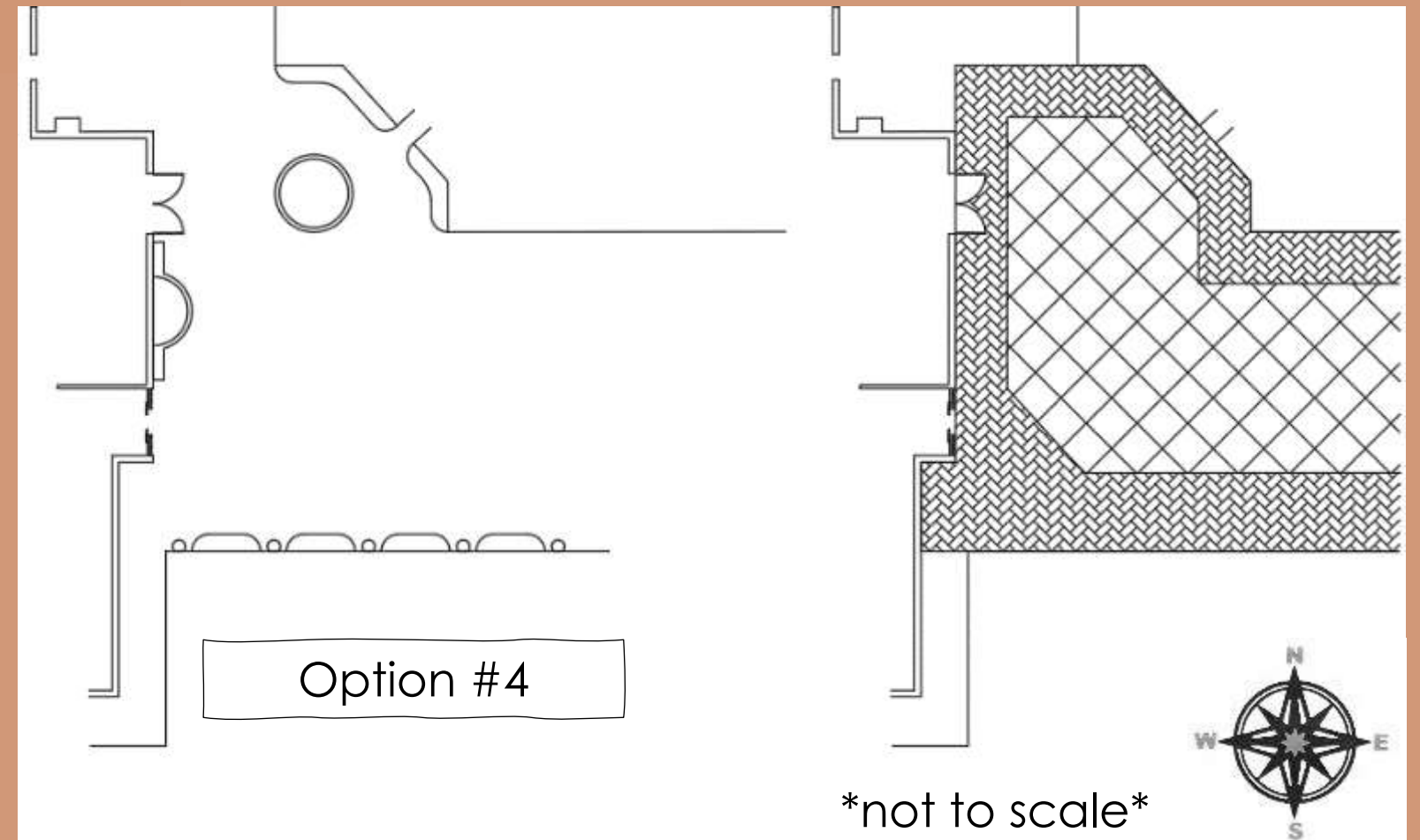
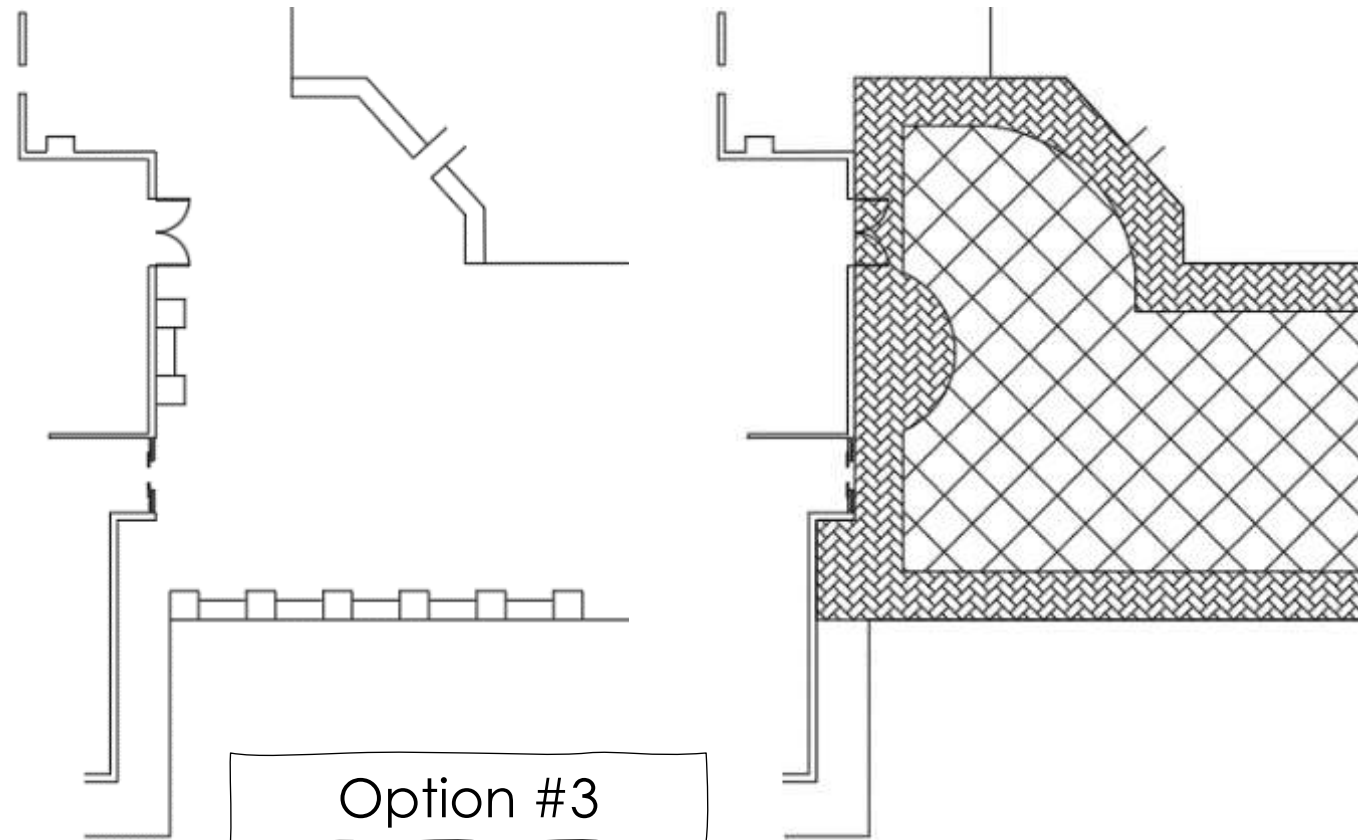
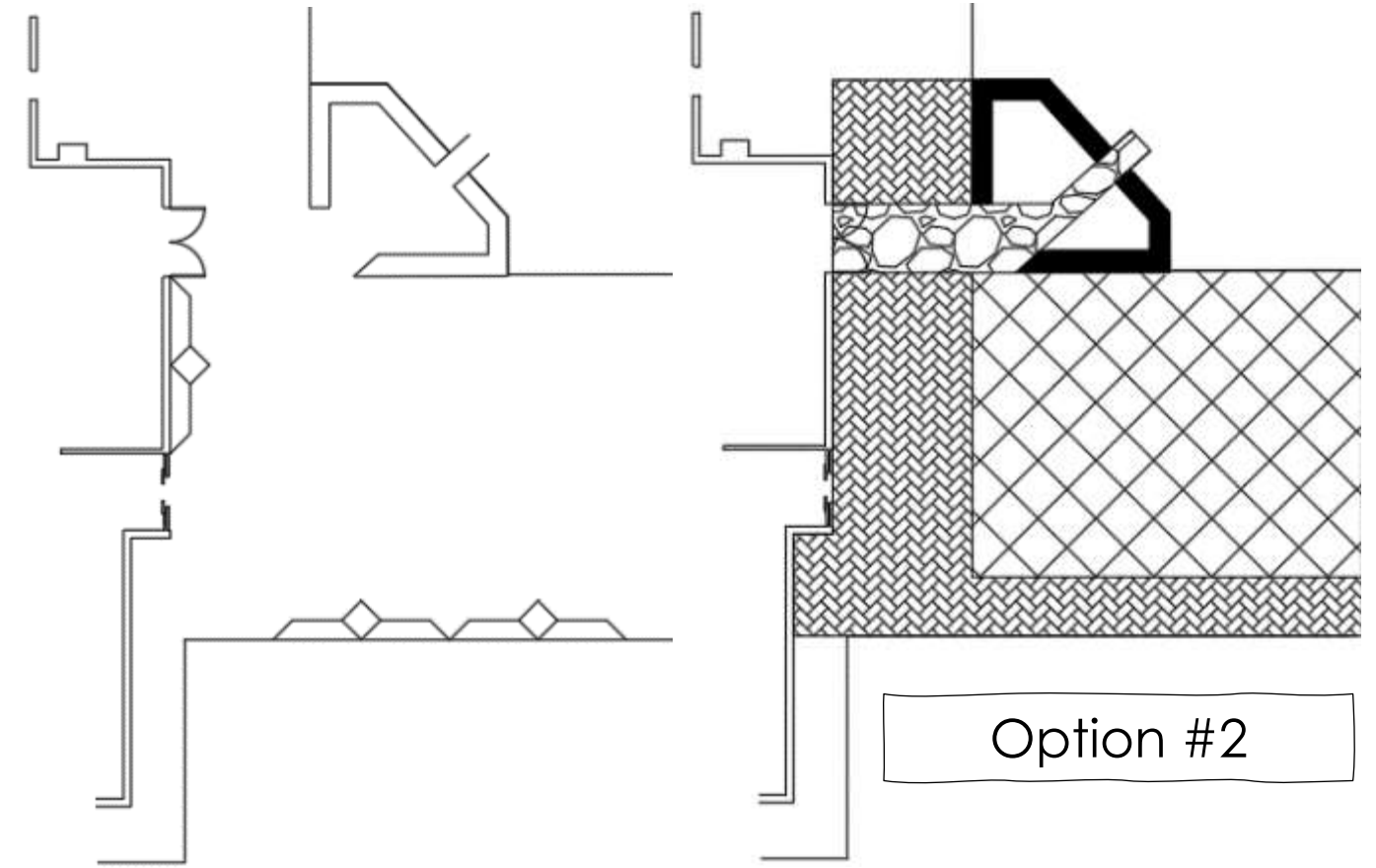
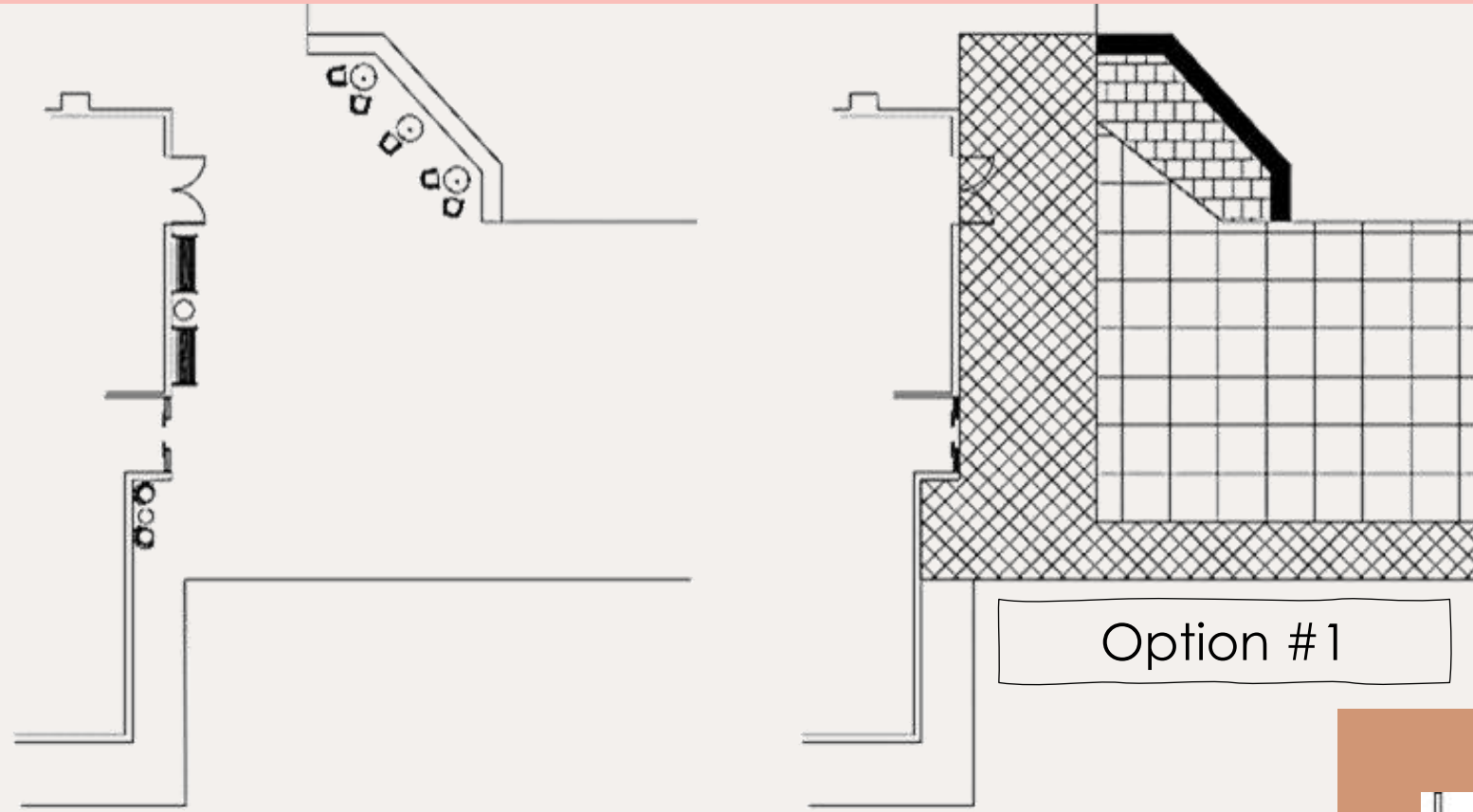
Wayfinding – Using the draping string lights help navigate through the space but the furniture set in the space will allow for the space to be open but very easy to walk through the space.

Color Concept – Greenery plays a big part of the space and with such a vibrant color, neutral colors of greys and whites' contrast against the color. The hints of browns from the wood also contrast and help get a sense of comfort.



Furniture & Finish Pallets

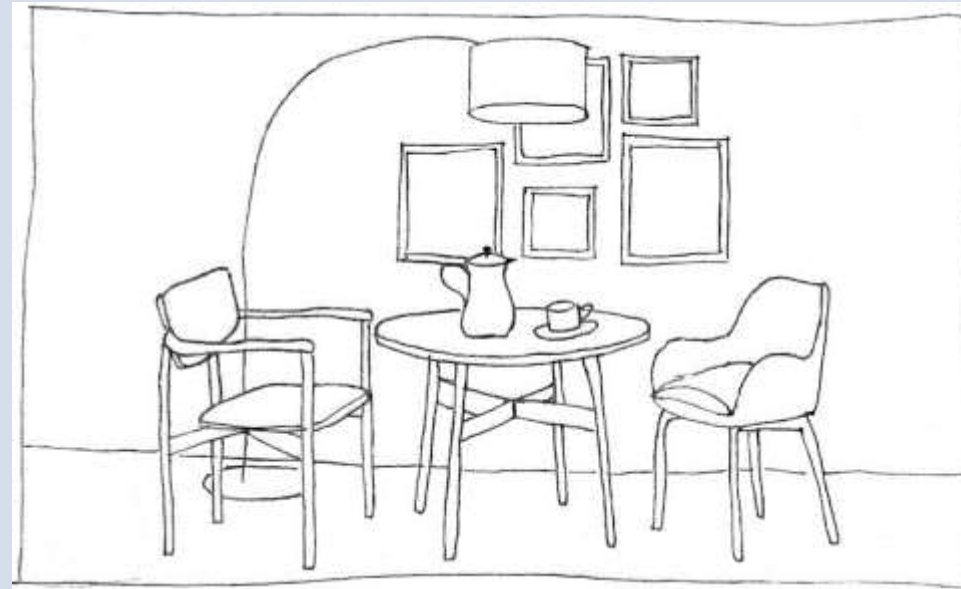
BACK ENTRY - PLANS



SPACIAL CONCEPT SKETCHES



Diffuse Focus Work



Group Planning/
Meeting



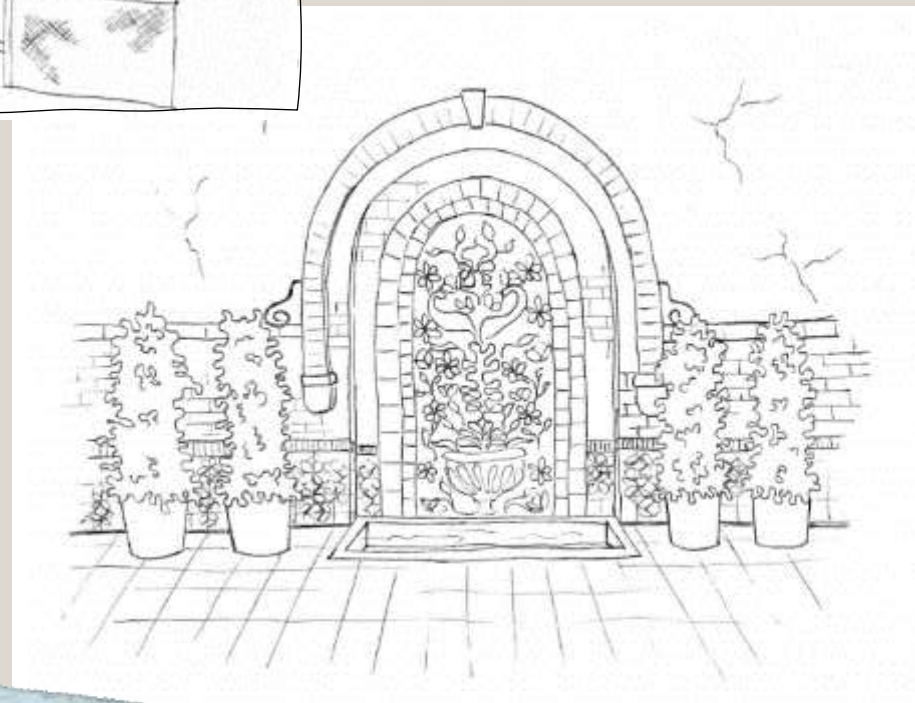
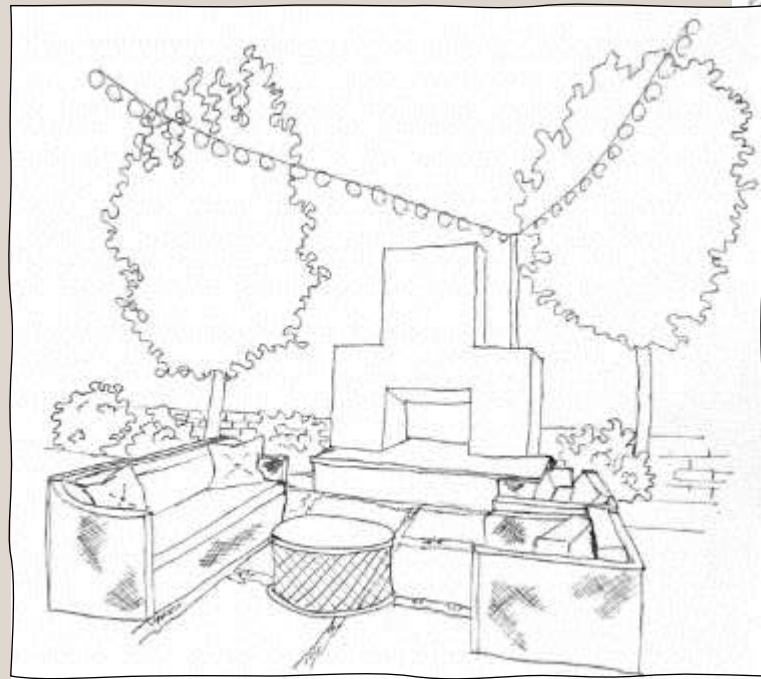
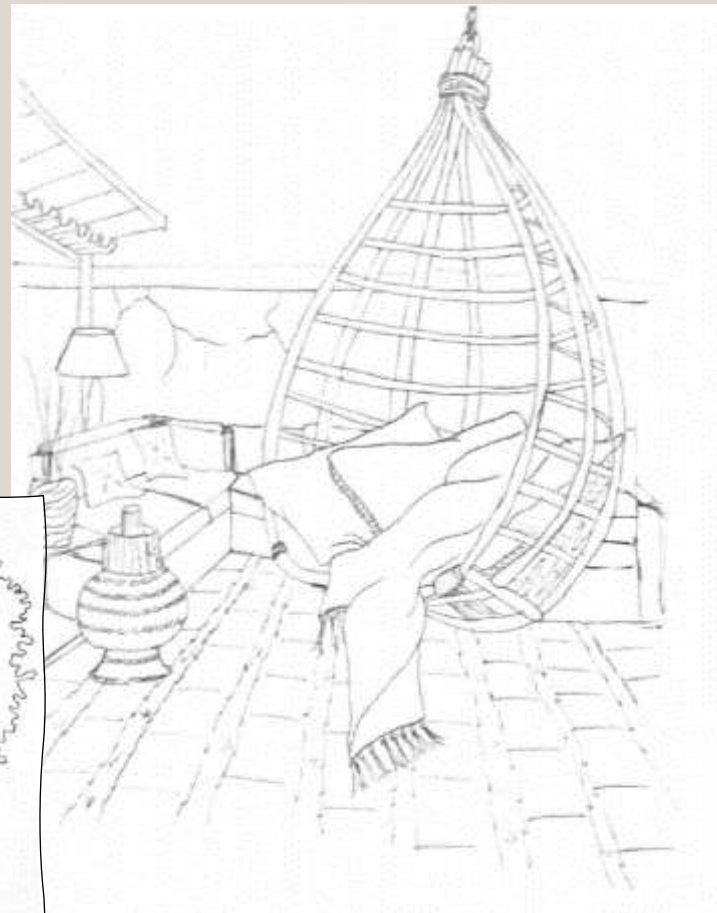
Daydreaming



Socializing



CHALLENGE RESOLUTION



Built-in furniture

Prevents theft, along the perimeter to stay out of walkways, easier upkeep, more customization.



Wayfinding

Using different types of materials and patterns to guide guests, the use of thyme between pavement produces a fresh scent, cost effective, low maintenance.

Design Sketches

BACK ENTRY



Furniture, & Finish Pallets



Luminaires – Up-lighting will add to wayfinding, string lights create a warm and welcoming glow, and lanterns/lamps throughout will all for the space to always be lit. LEDs are fantastic for outdoor use because they offer all the same benefits as indoor LEDs while also reducing the maintenance work and replacement costs.

Lighting Finishes –Most of the outdoor lighting is recessed in the floor or is “hidden” to blend with the environment. Lights that have metal will have a blackened steel finish to echo the interiors finishes.

Maximizing Space – built in seating adds multiple seating options for guest. Built in benching around some of the edges of the area. Greenery could also be added as inserts in the back side of the bench.

Color Concept – There is a blend of natural materials such as concrete, plants, and wood, with different patterned and textured upholstery accents throughout. The bright pops of colors that can be seen on the inside of the hotel are causally blended with the neutral organic materials/colors that can be found outdoors.

Design Problems

1. How can PACK use their design to draw more customers into the business?
2. How can visuals be used to guide people throughout the hotel?

Design Resolutions

- Maximalism inspired design helps to draw people throughout the space and add interest to the new construction.
- Lighting selections add design emphasis in support spaces like the bar and walkways.
- Multiple lounge areas and amenities will allow for guests to feel welcomed and comfortable during their stay.
- Vibrant colors schemes used throughout will attract customers from the street and present well for marketing.