

# Hilton Garden Inn

Greenville, NC

## Portfolio 2

Carrick, Fry, Joyner, and Kendrick



**CLARENDON**  
PROPERTIES



**6<sup>th</sup> Street Studio**  
Interior Designs



# TABLE OF CONTENTS

3 Back Patio

11 Lounge

16 Lobby

25 Side Courtyard

34 Rooftop Bar

43 Design Challenge Resolution Statement

# BACK PATIO

REBECCA JOYNER



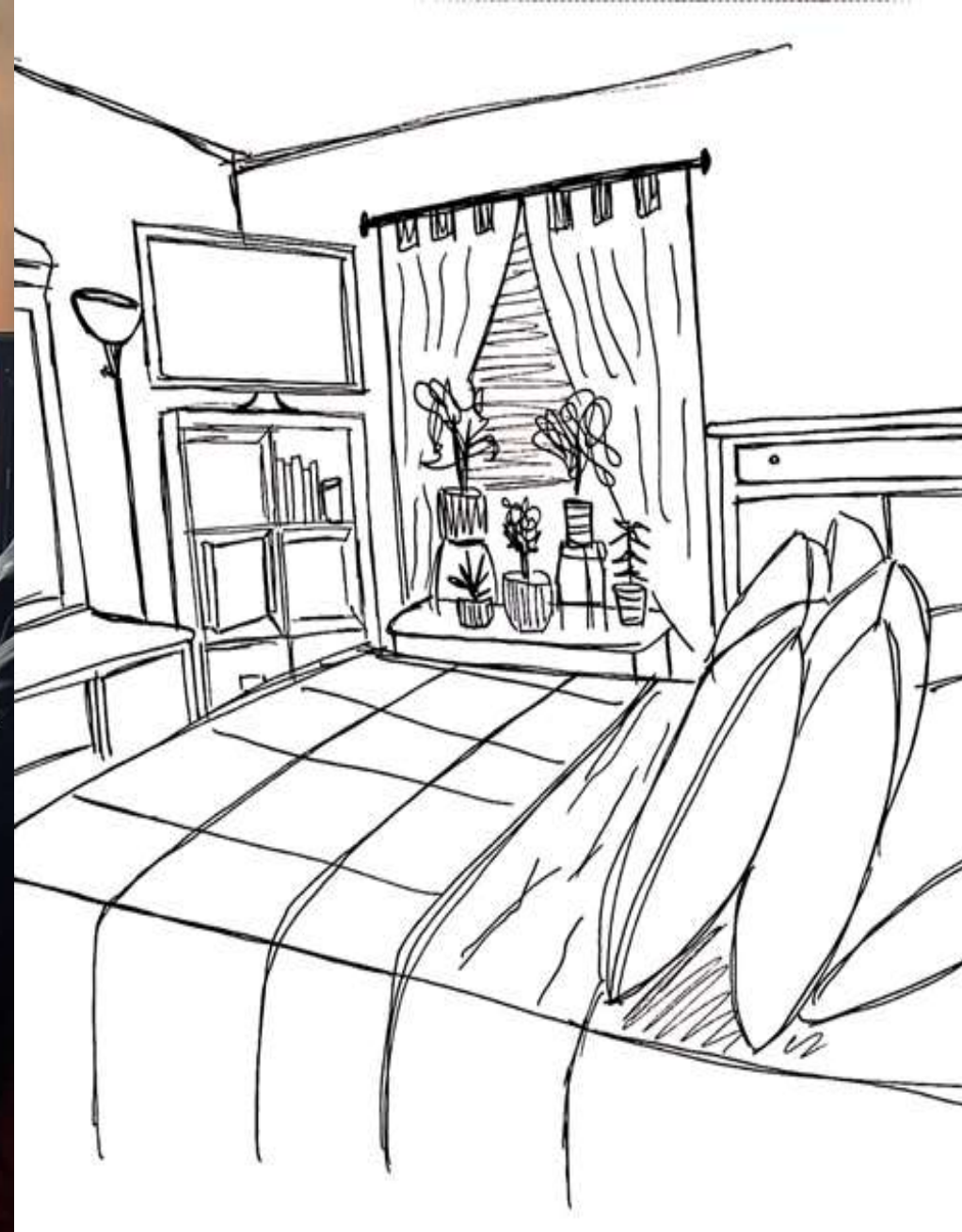
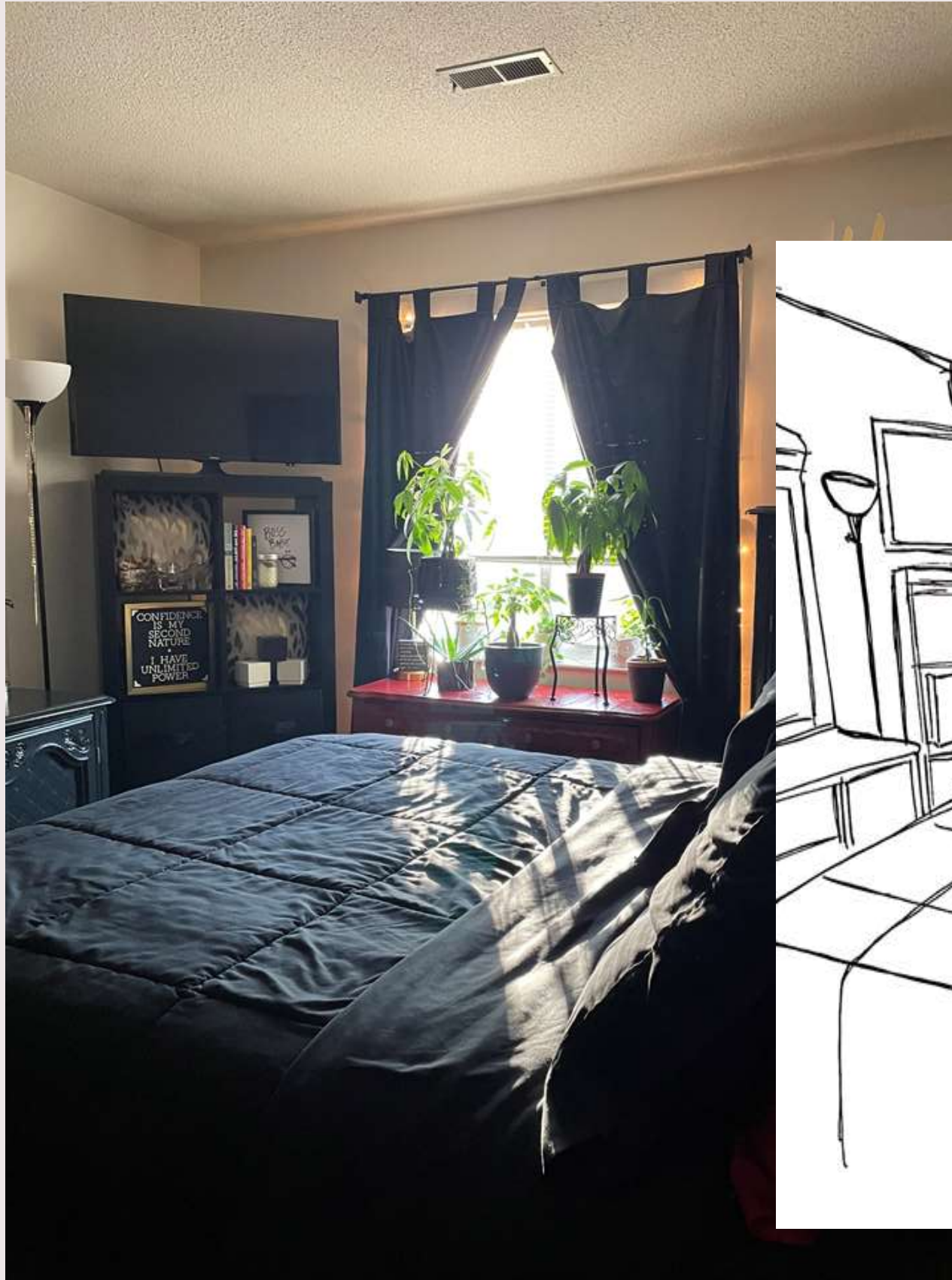
# Spatial Concept Spaces : Diffuse Focus Work/ Sketching

- Comfortable seating
- Cozy feel
- Open and inviting space
- Plants/Nature





# Spatial Concept Spaces : Daydreaming

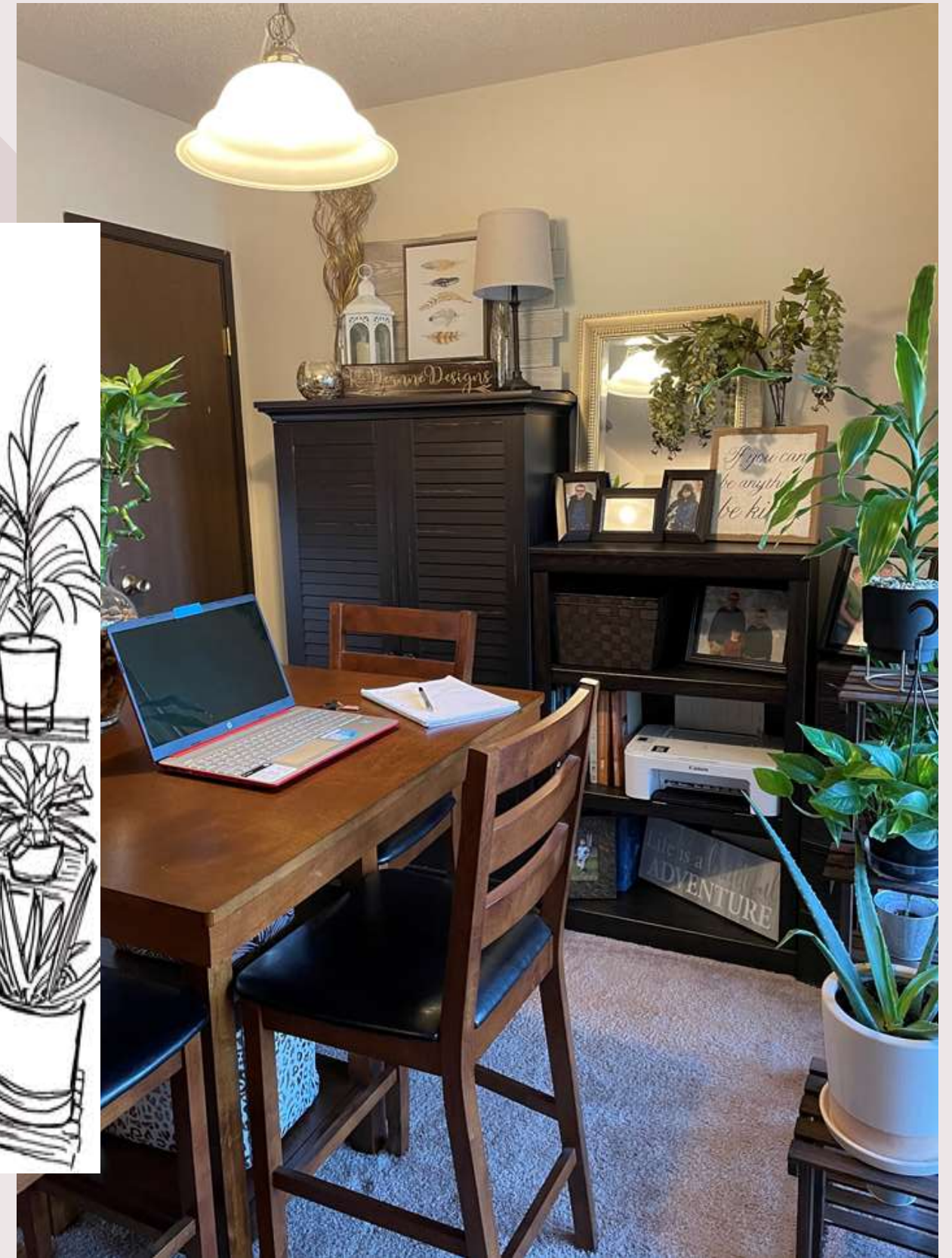


- Window/Outside views
- Natural Lighting
- Plants/Nature
- Comfortable seating
- Open space



# Spatial Concept Spaces : Group Planning/ Meeting

- Good lighting
- Surface for working
- Enclosed/private space
- Quiet space





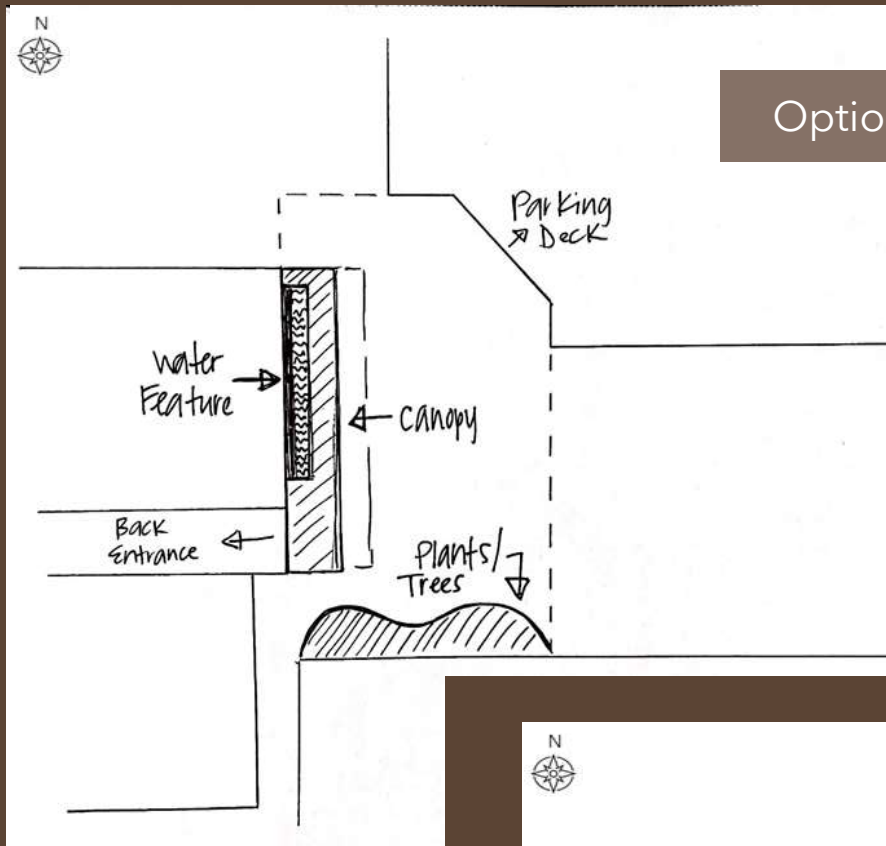
# Spatial Concept Spaces : Socializing



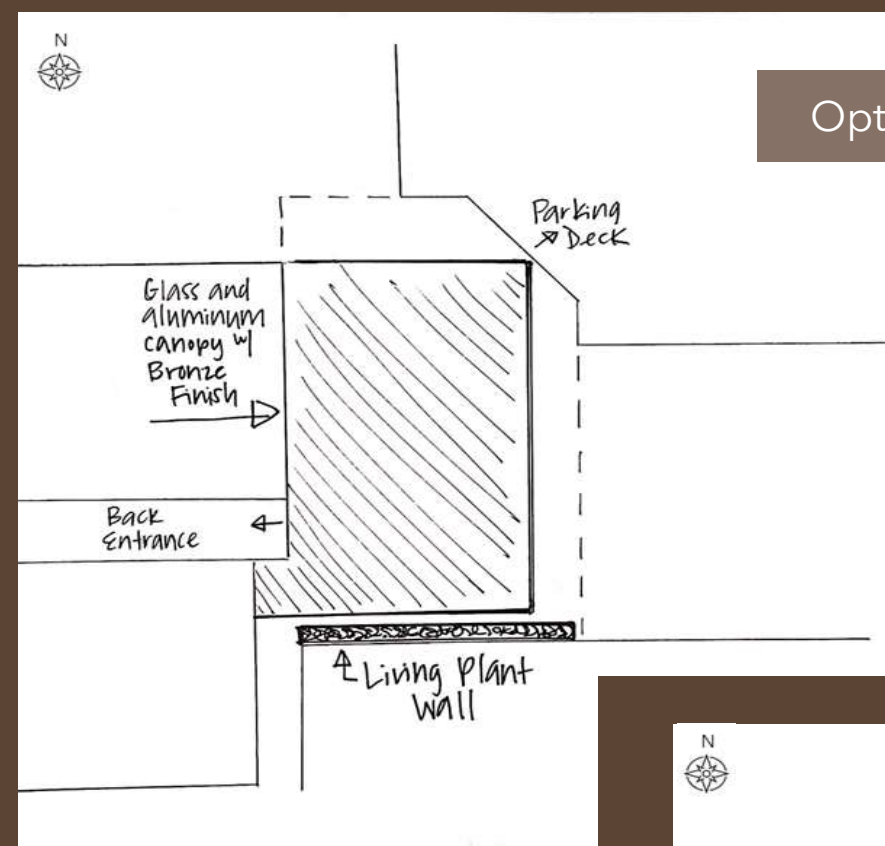
- Bar height seating
- Surface for food/drinks
- Windows for open feel
- Plants/Nature

# PLAN SKETCHES : BACK PATIO

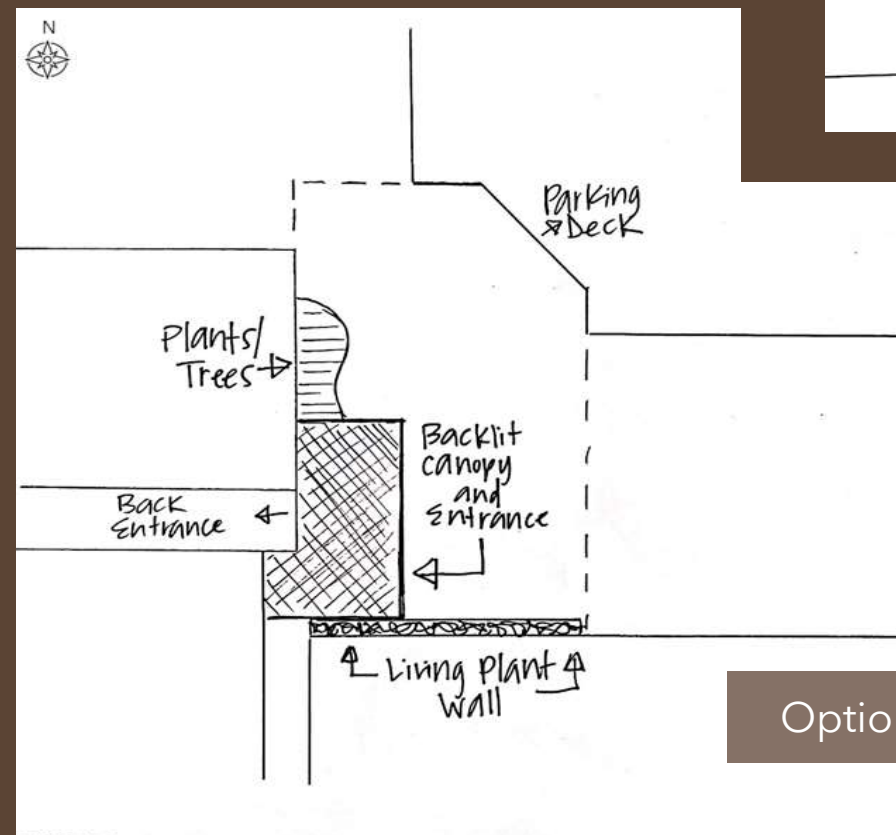
Option 1



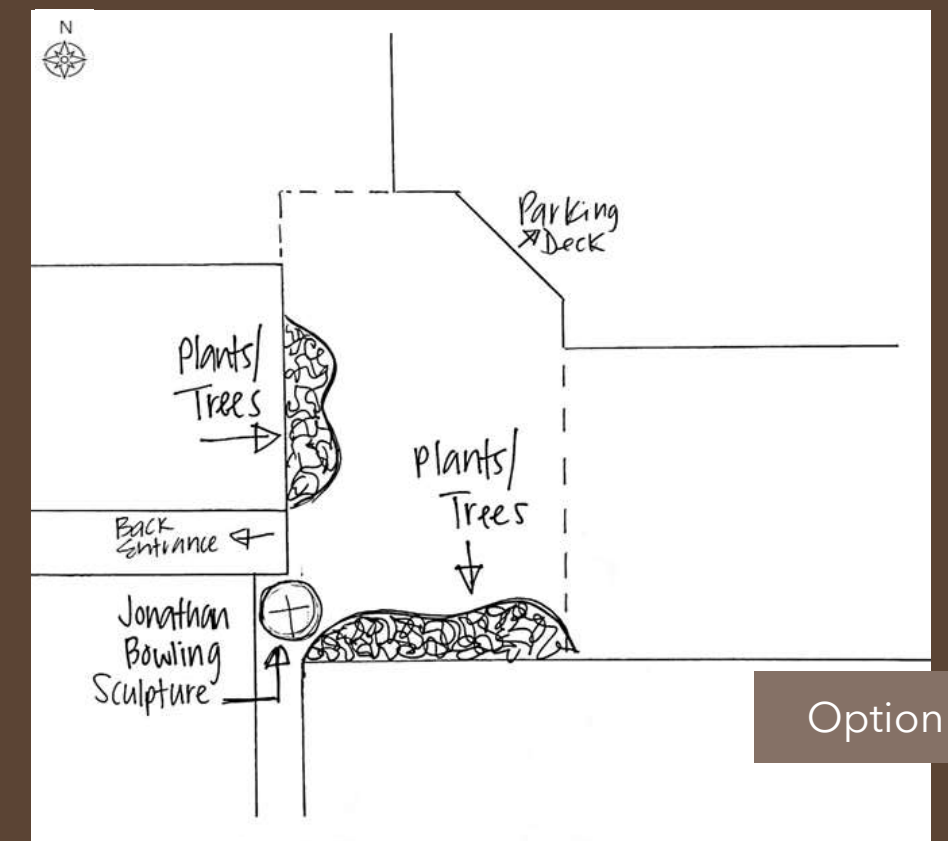
Option 3



Option 2



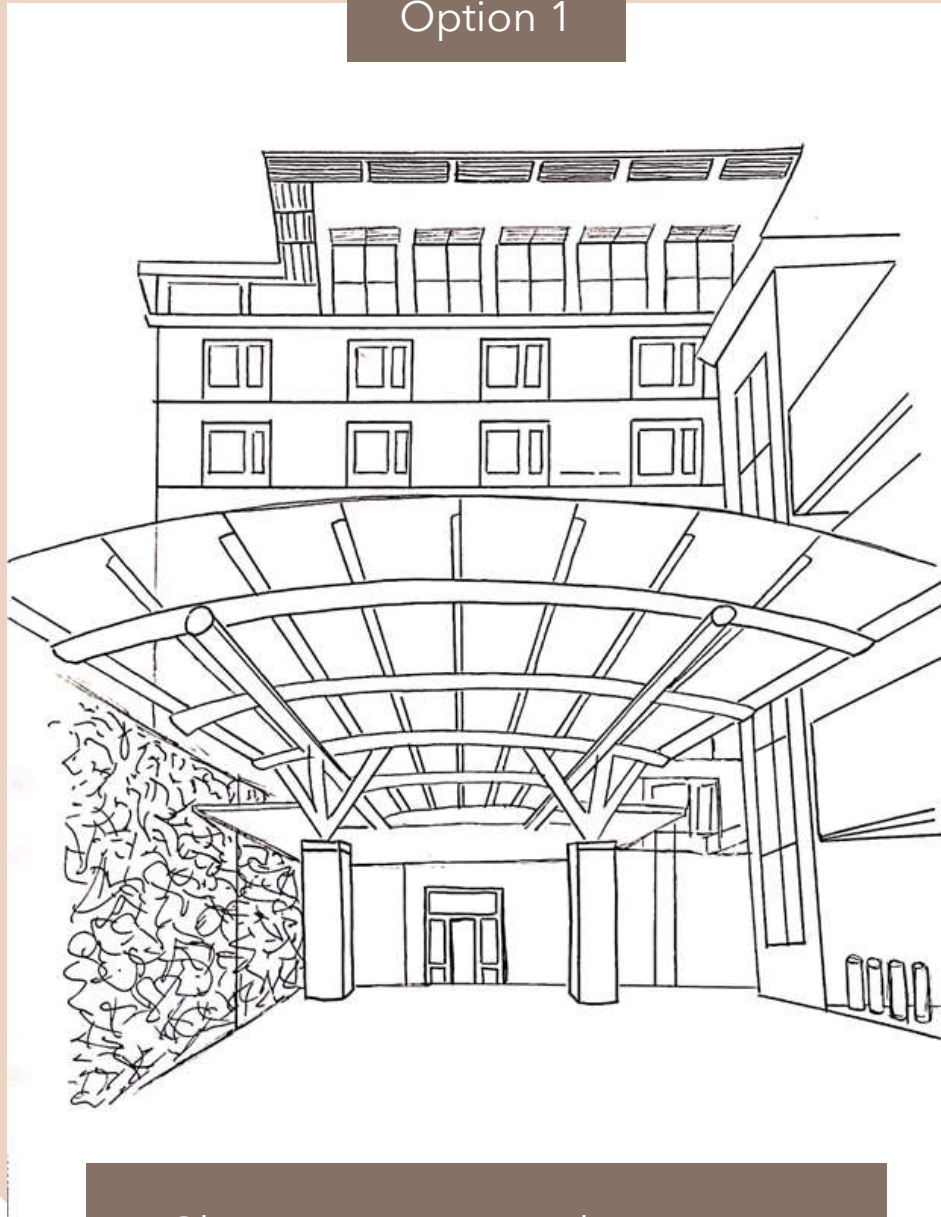
Option 4





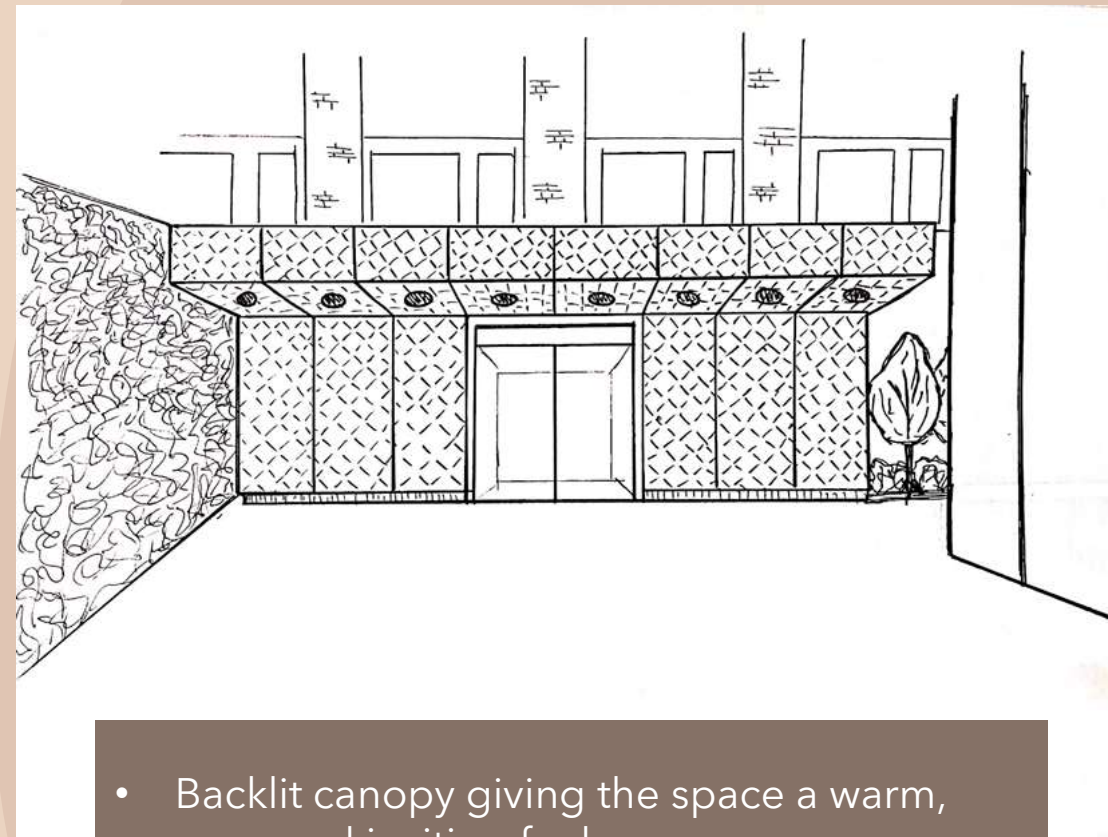
# PERSPECTIVE SKETCHES : BACK PATIO

Option 1



- Glass canopy giving the space an open feel
- Living wall to bring green to the space, giving the space more of a warm feel

Option 2



- Backlit canopy giving the space a warm, cozy, and inviting feel
- Living wall, plants, and trees to bring some greenery and warmth to the space

Option 3



- Water feature by the door to produce a relaxing atmosphere
- Plants and trees to bring the warming feel of nature to the space



# LIGHTING : BACK PATIO

- Backlit front with bronze finish
- String lights lining the aluminum arches of the canopy
- Color changing wall lighting on exterior of hotel (Use specific colors for special occasions, such as purple on game day)





# FURNITURE & FINISHES : BACK PATIO

- Glass and aluminum canopy with bronze finish
- Jonathan Bowling recycled metal sculpture
- Living plant wall

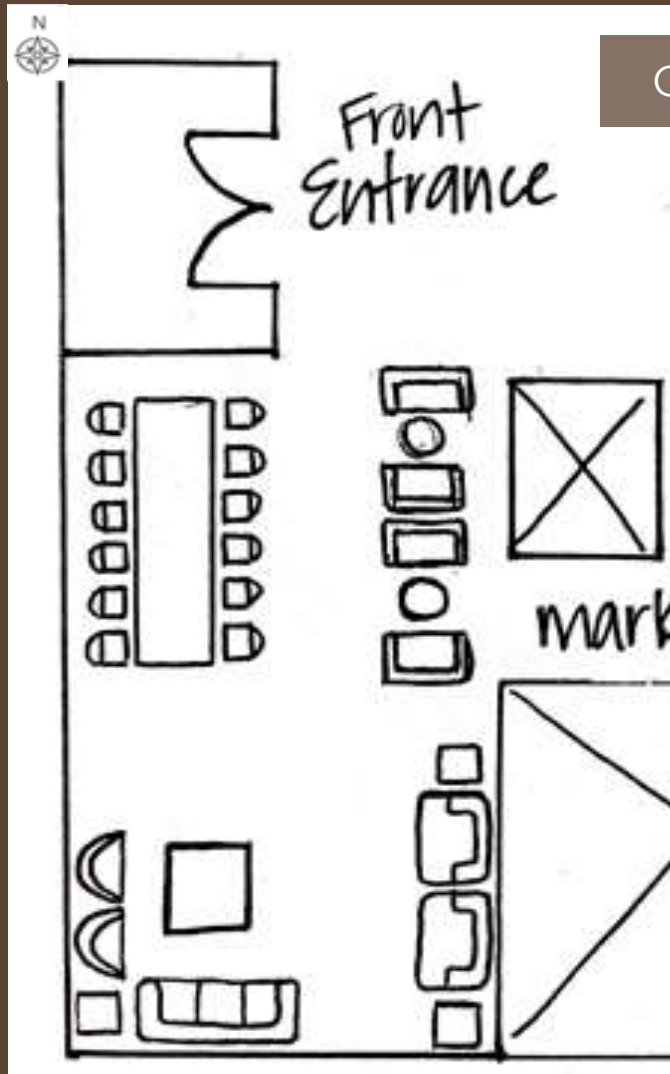




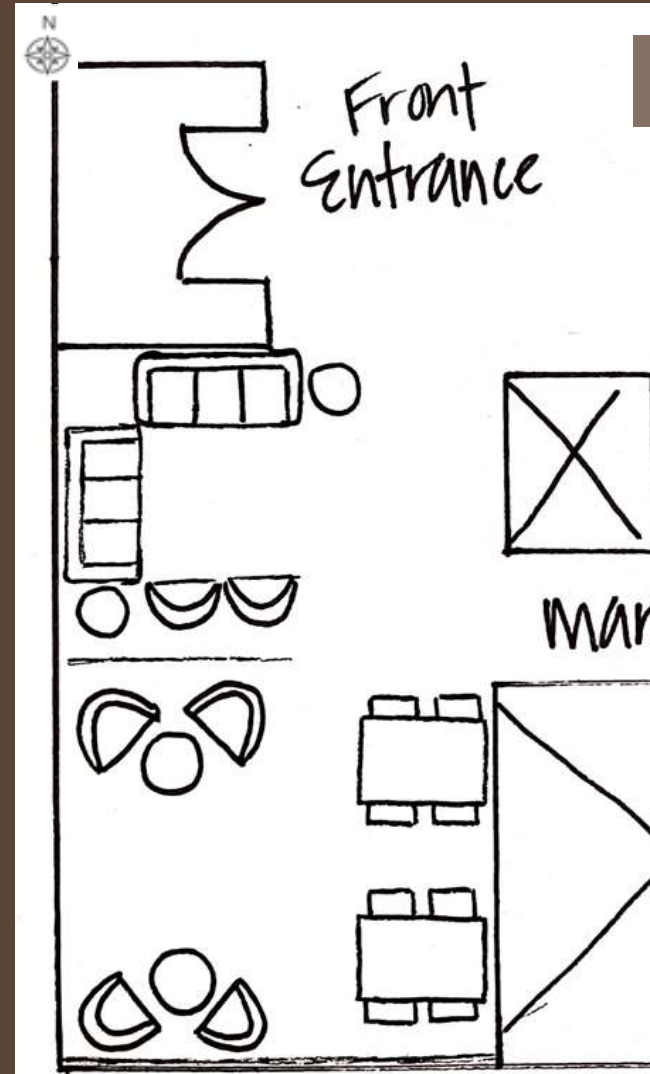
**LOUNGE**  
REBECCA JOYNER



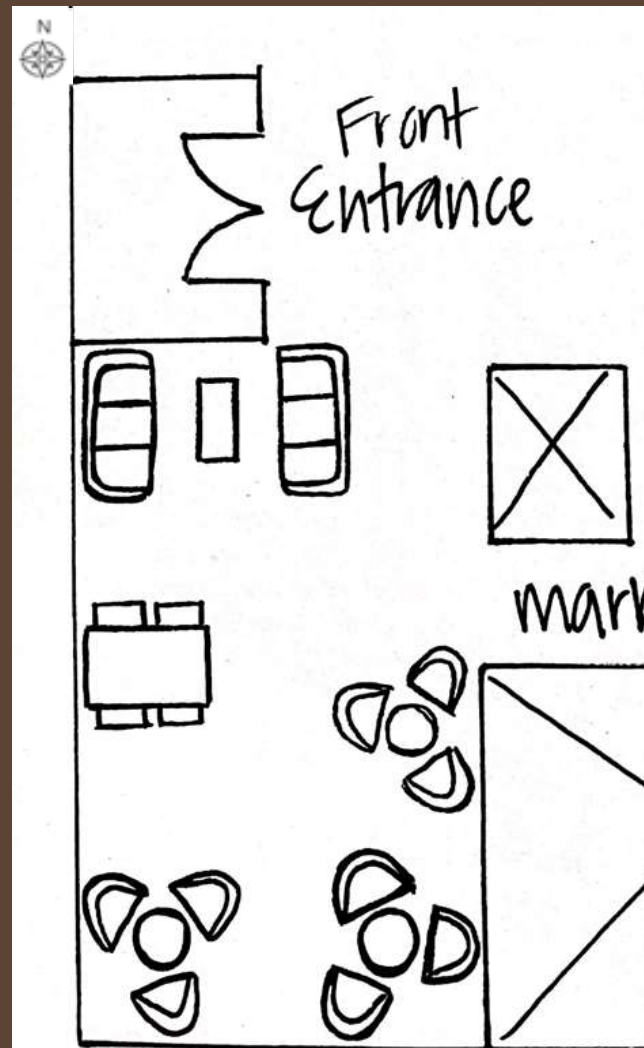
# PLAN SKETCHES : LOUNGE



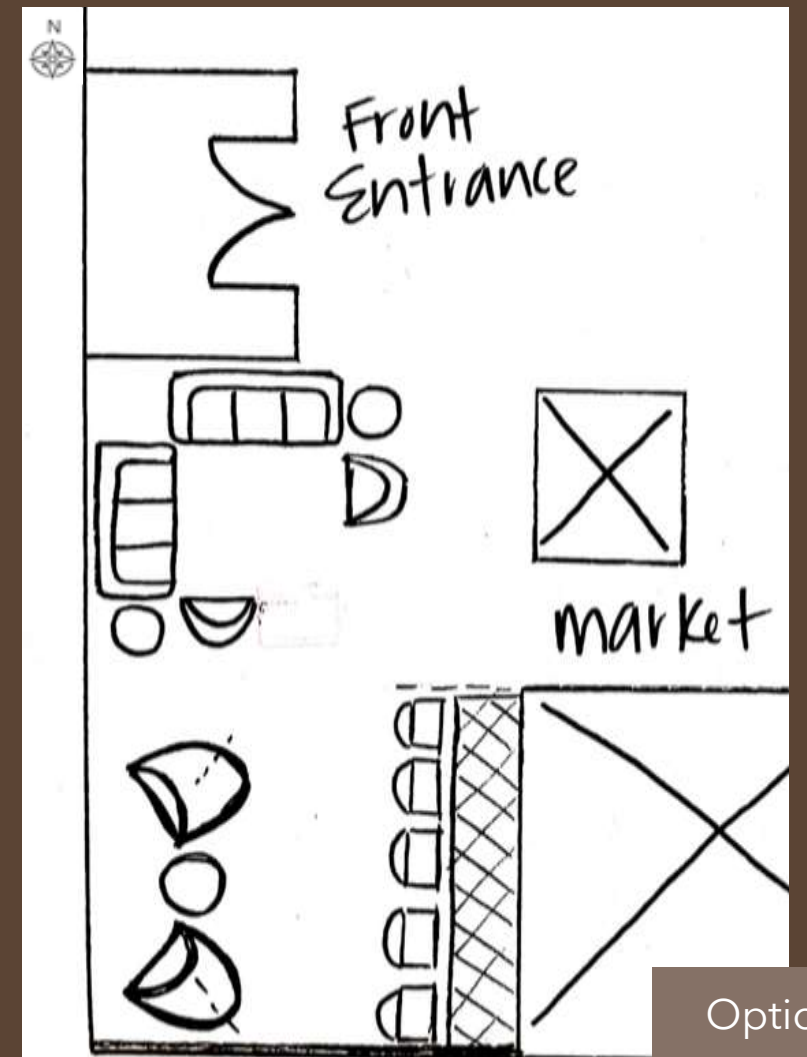
Option 1



Option 3



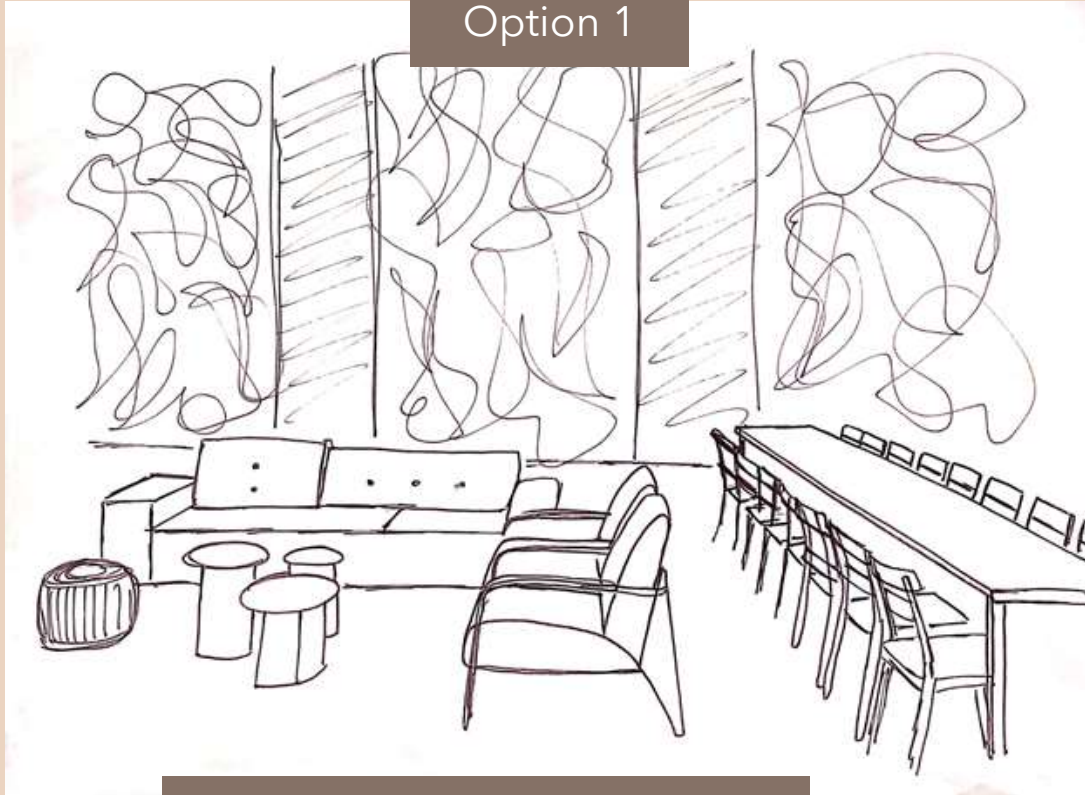
Option 2



Option 4

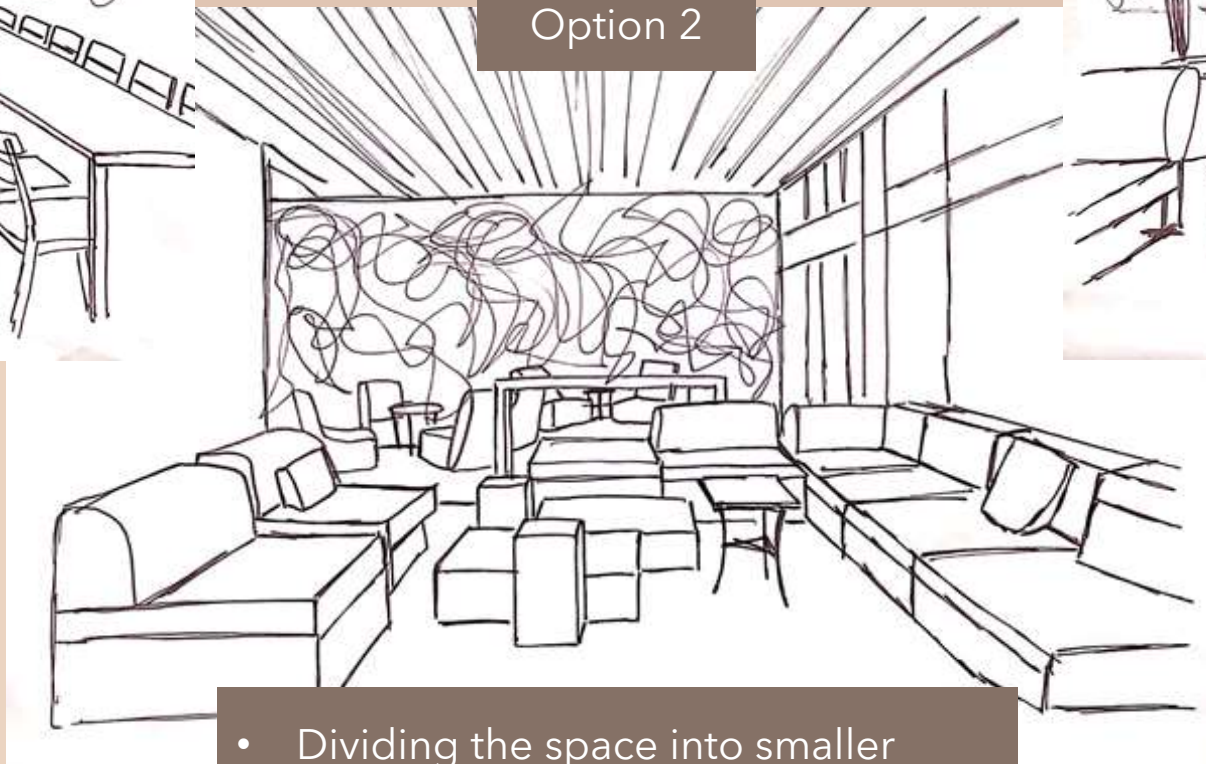
# PERSPECTIVE SKETCHES : LOUNGE

Option 1



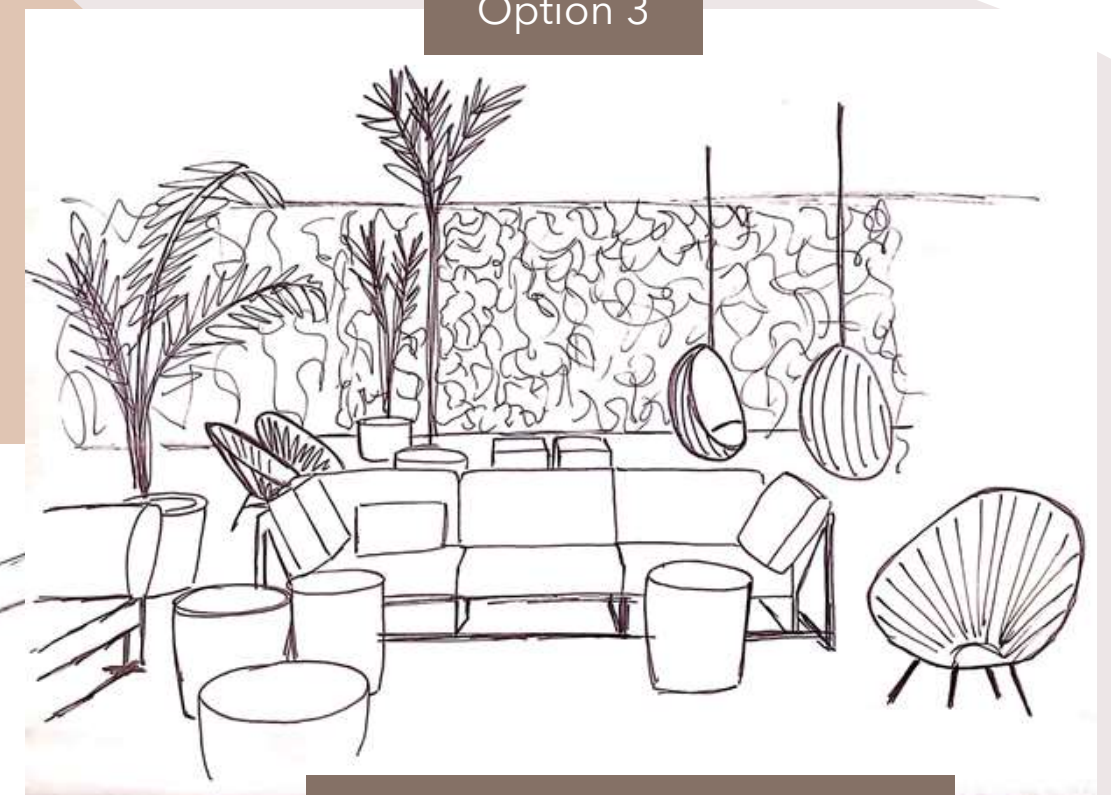
- Long table providing space for working, meetings, or socializing
- Separate space for comfort and relaxing
- Living wall bringing the outside in

Option 2



- Dividing the space into smaller sections for more private space
- Offering a cozy space as well as a working/meeting space
- Living wall to bring green to the space, giving the space more of a warm feel

Option 3



- Hanging chairs facing the window for an outside view, producing an open feel
- Living wall and plants bringing the feel of outside, in and giving the space a warm feel

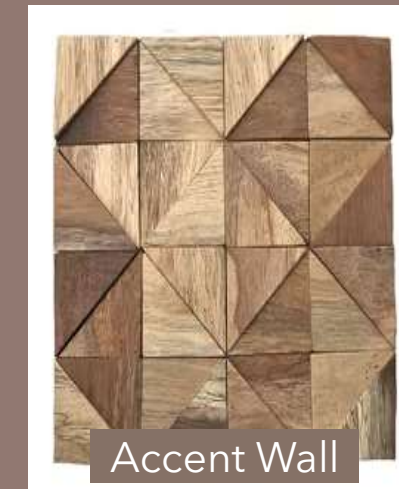
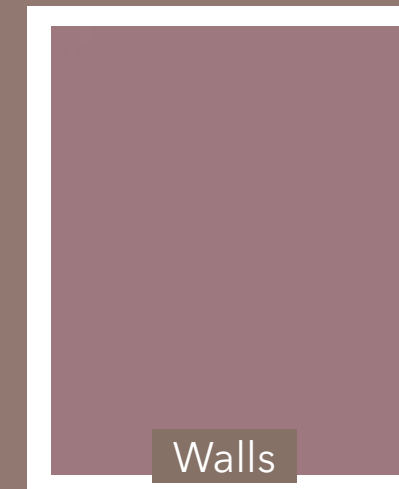


# LIGHTING : LOUNGE



- Industrial multilight/ same fixture used in lobby area to link the two spaces
- Long multilight industrial fixture over bar seating
- Lamp with industrial finish for side tables

# FURNITURE & FINISHES : LOUNGE



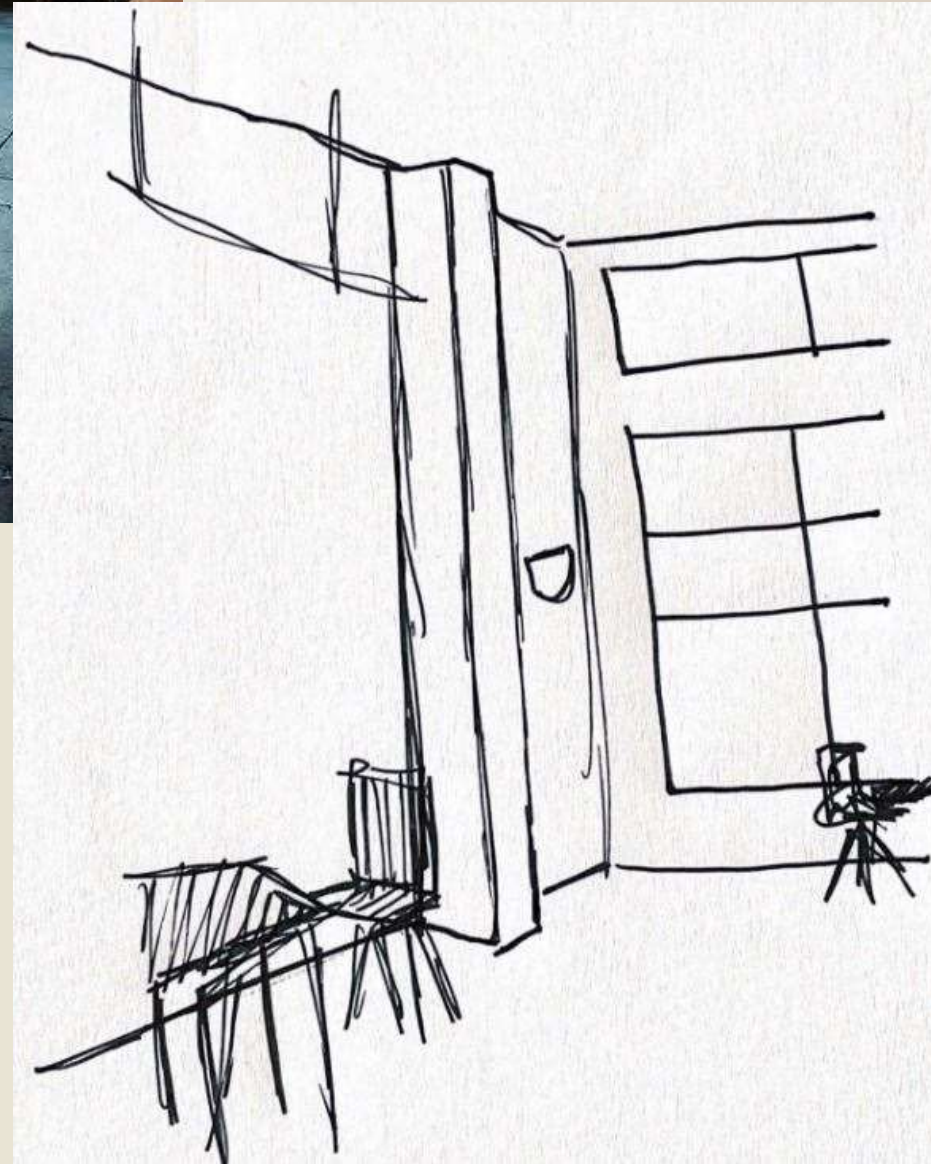
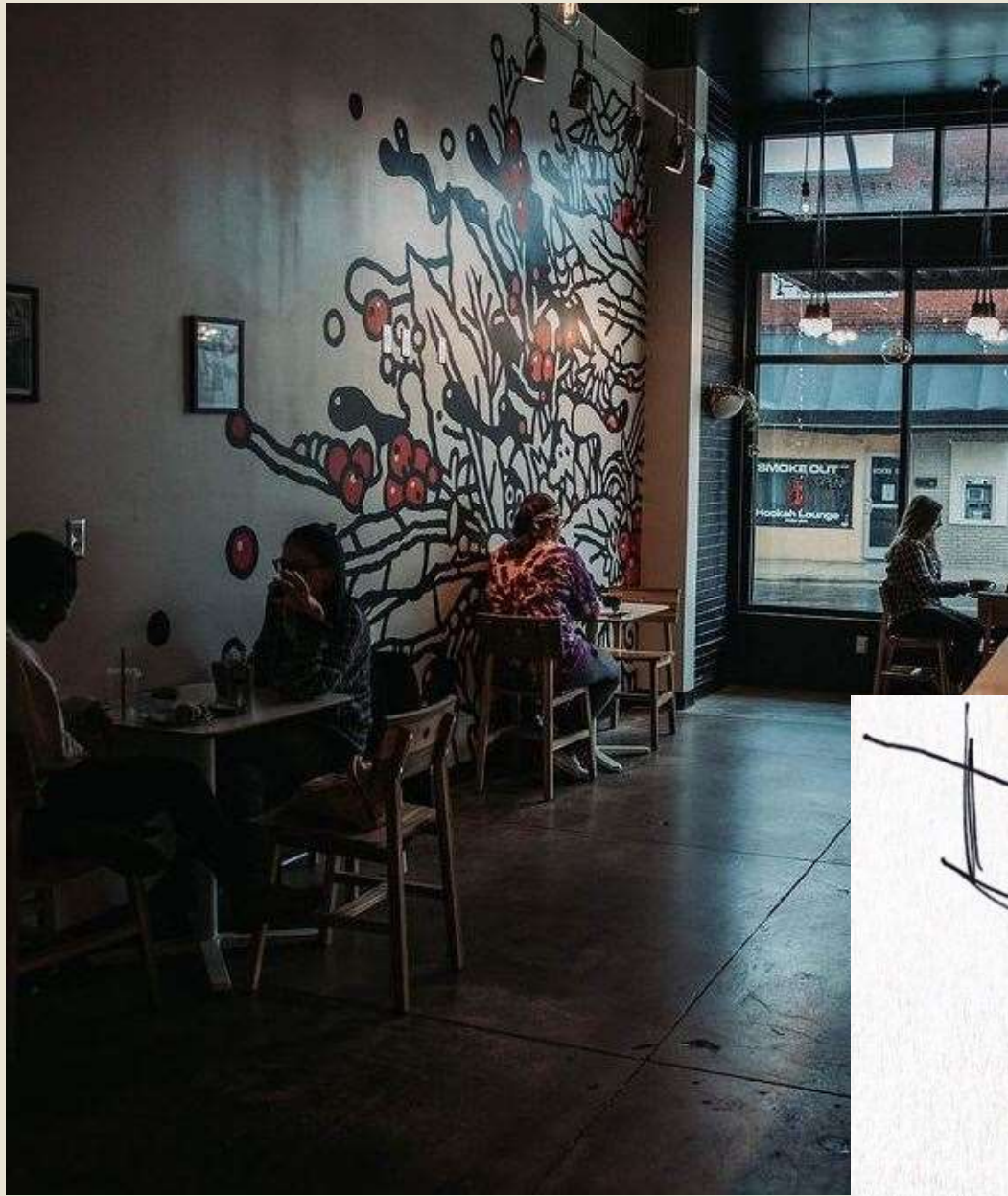
- Boho and industrial look
- Metals, textures
- Living plant wall, plants
- Jewel and earth tones



**LOBBY**

MYAH KENDRICK

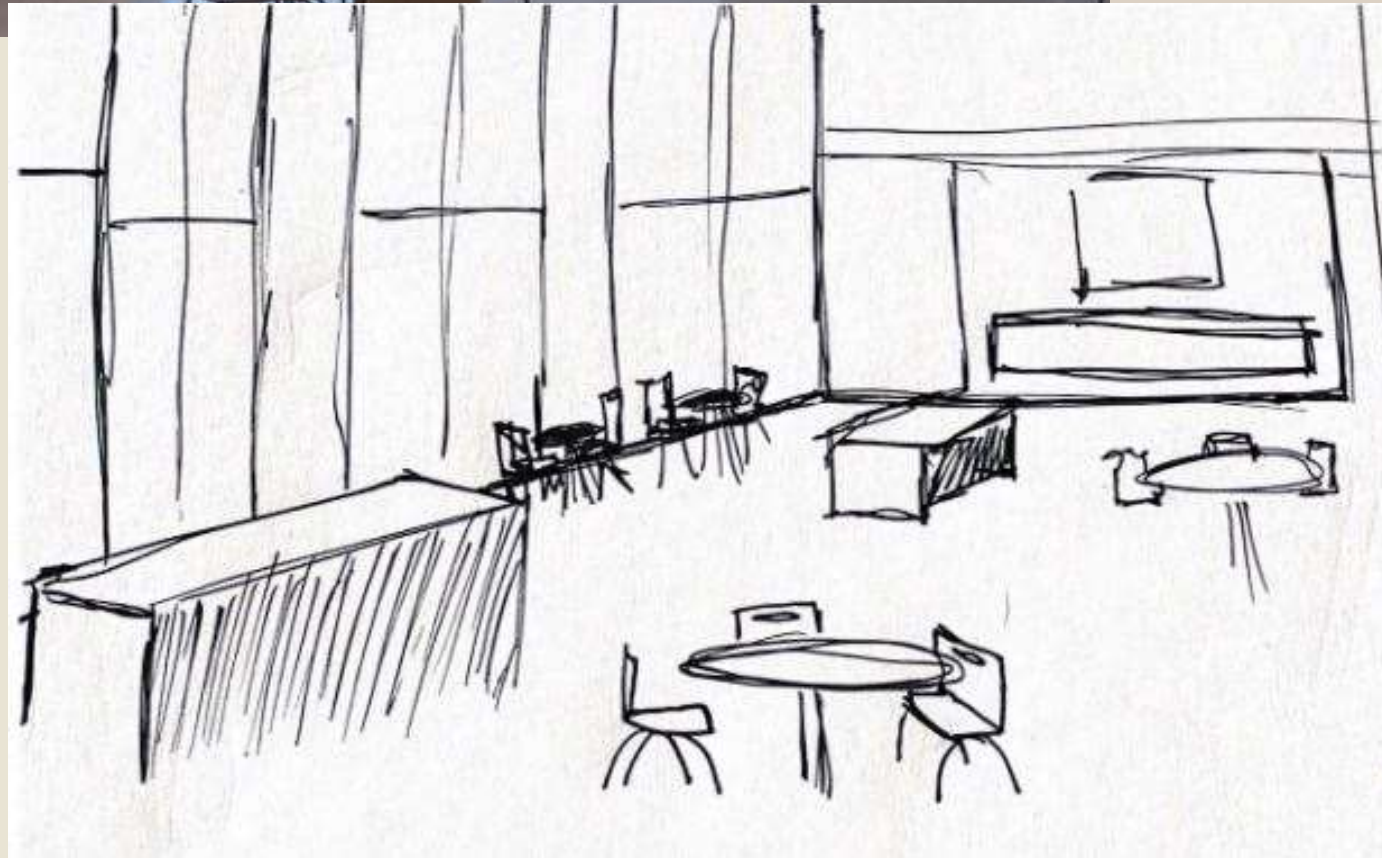
# Spatial Concept Spaces : Daydreaming



- Window/Outside views
- Natural Lighting
- Organic/Movement
- Small clumped seating



# Spatial Concept Spaces : Socializing



- Open plan
- Surface for eating/drinking
- Windows for outside to inside transition
- Plants/Nature



# Spatial Concept Spaces : Group Planning/ Meeting

- Good lighting
- Surface for working
- Separated areas of large groupings
- Quiet space





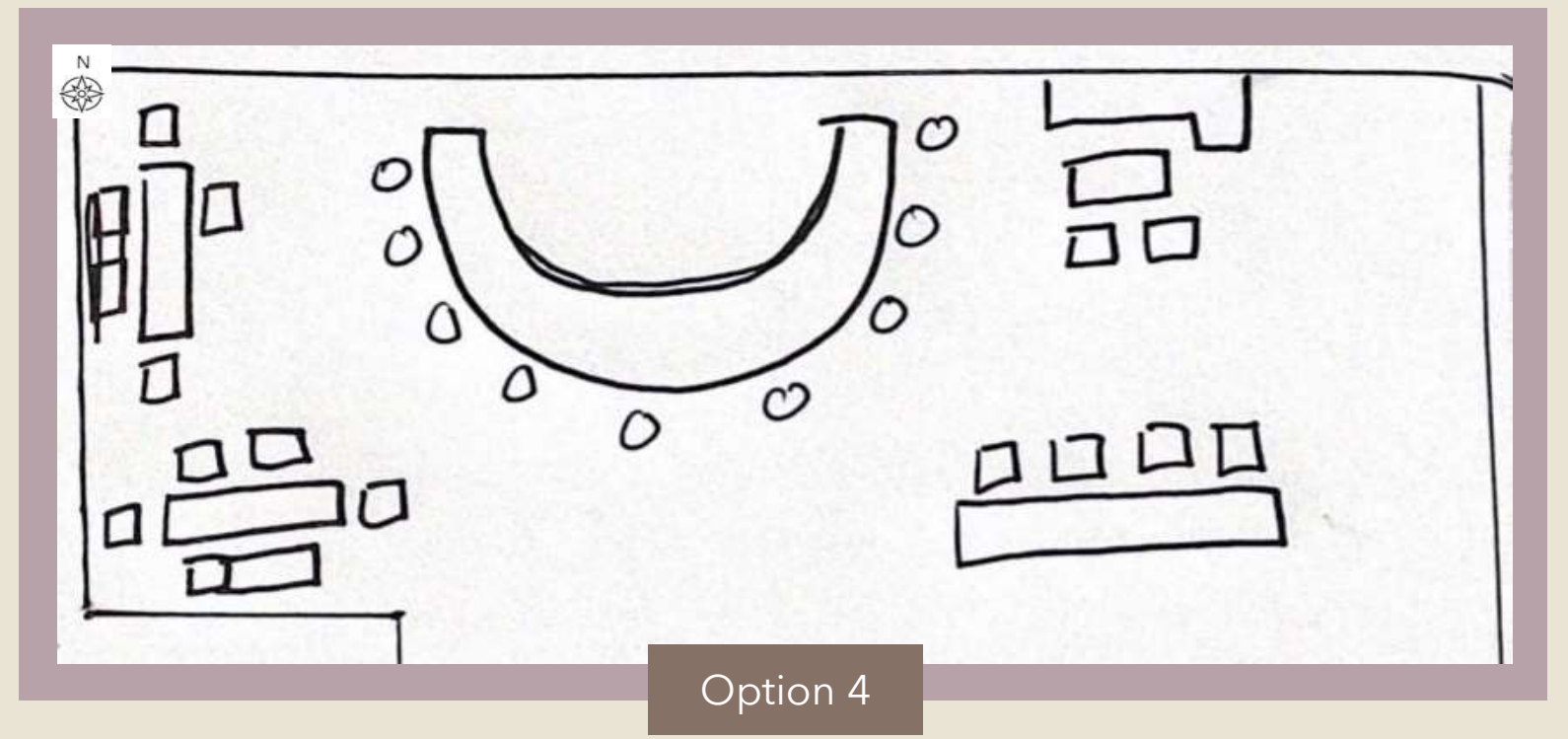
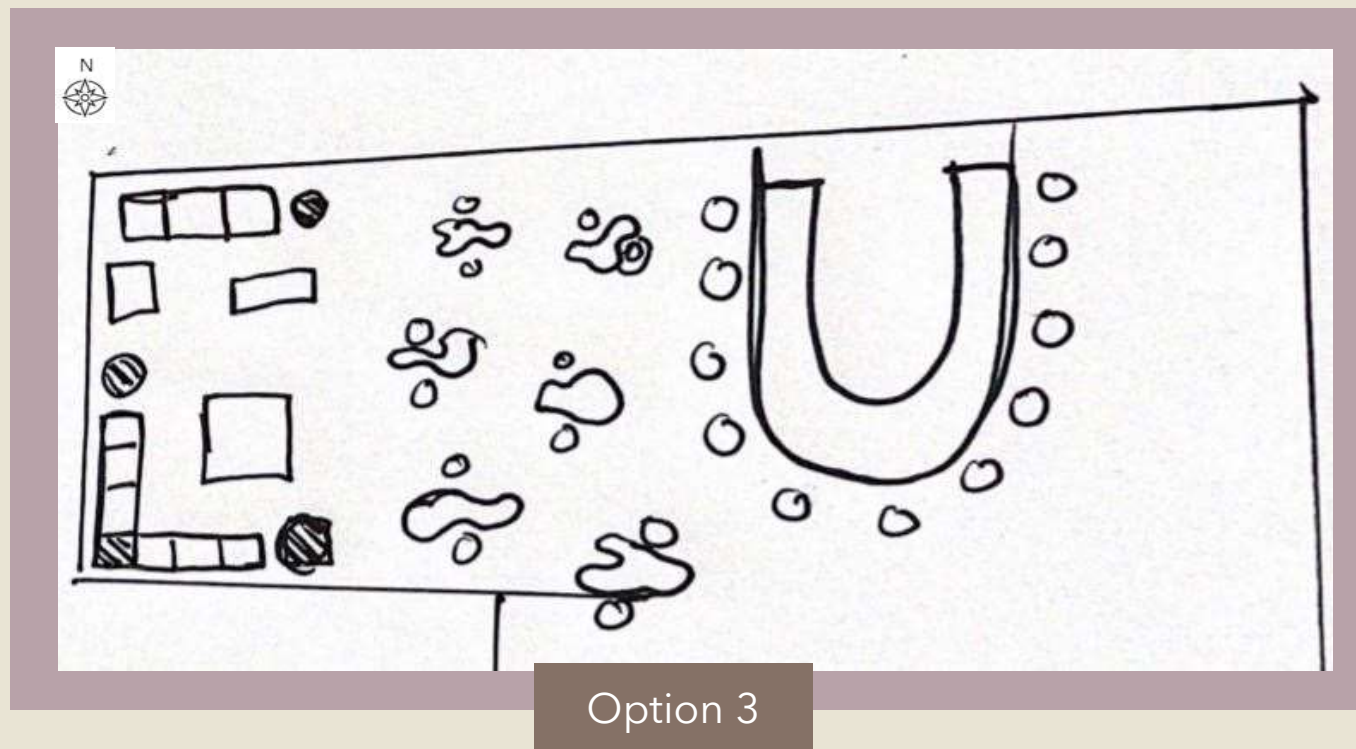
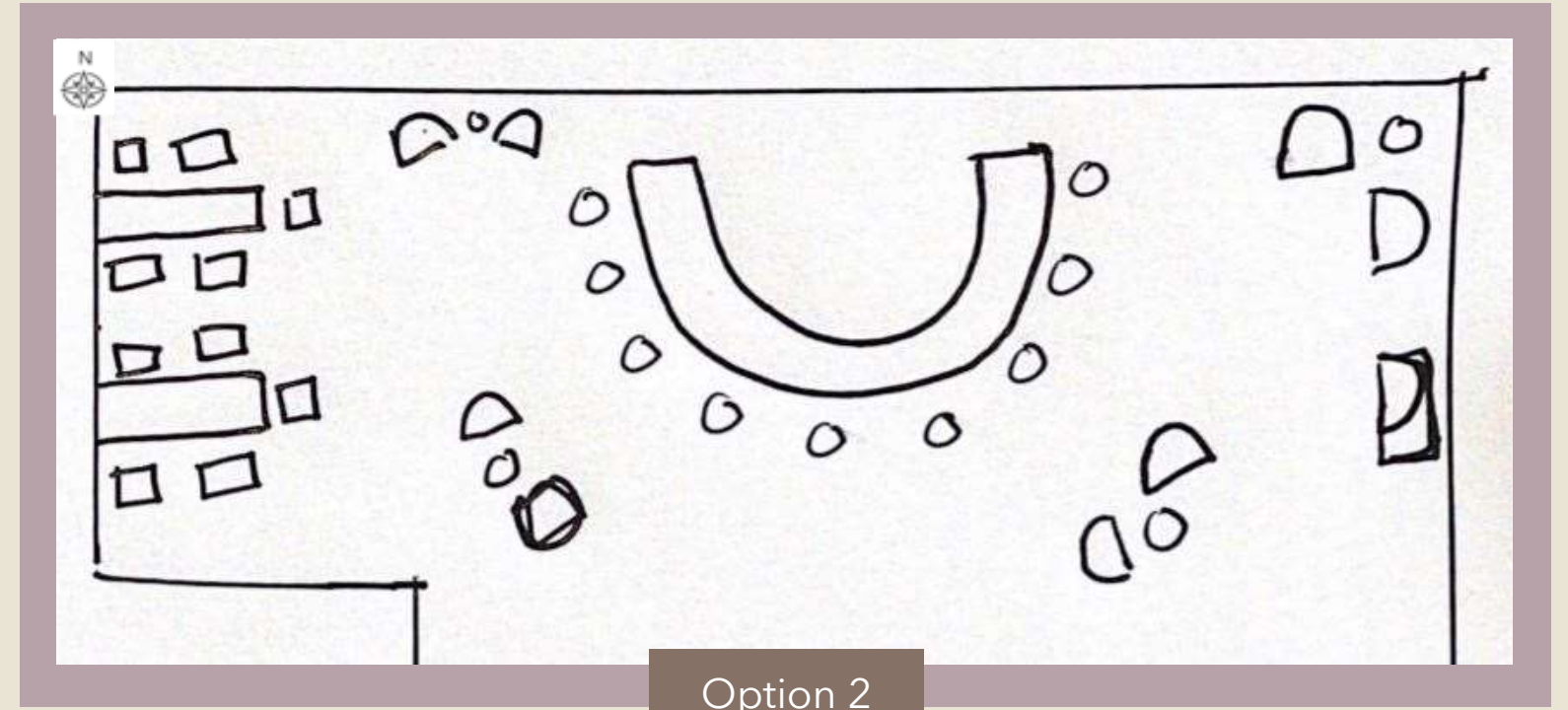
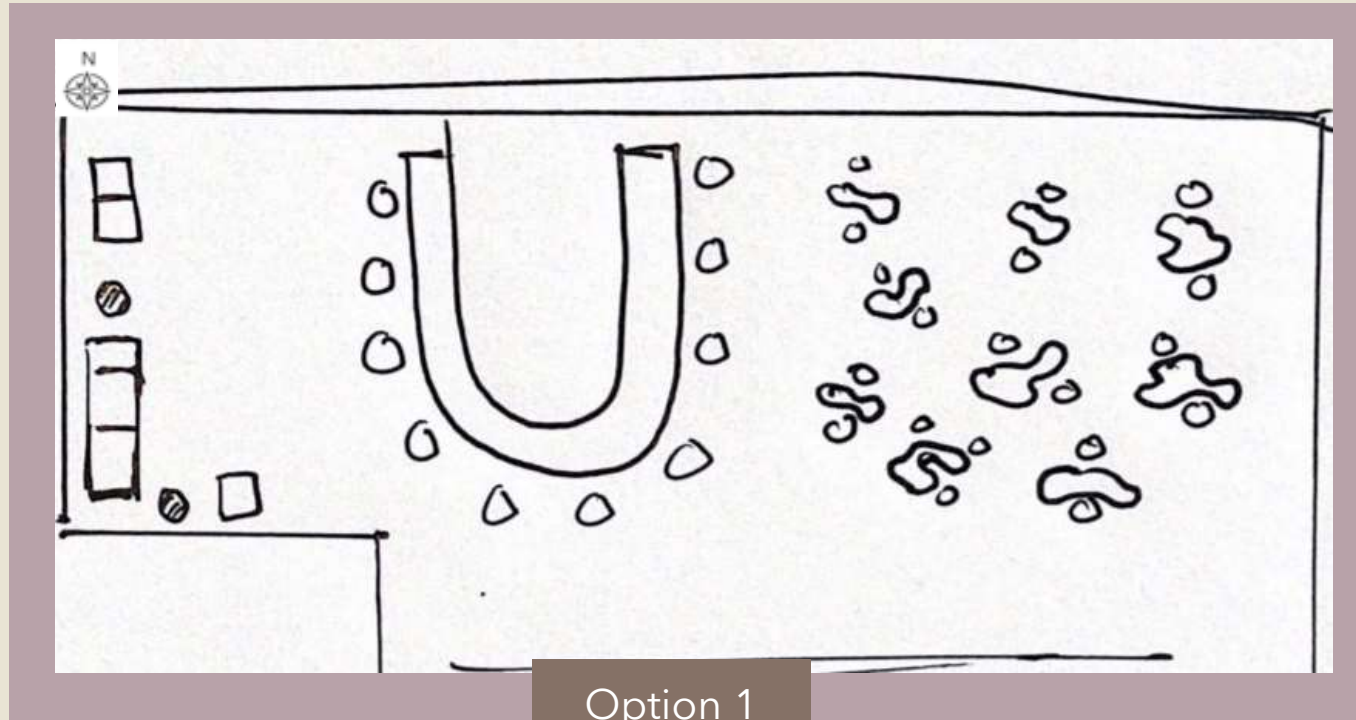
# Spatial Concept Spaces : Diffuse Focus Work/ Sketching

- Comfortable seating
- Cozy feel
- Open and inviting space
- Plants/Nature





# PLAN SKETCHES : LOBBY

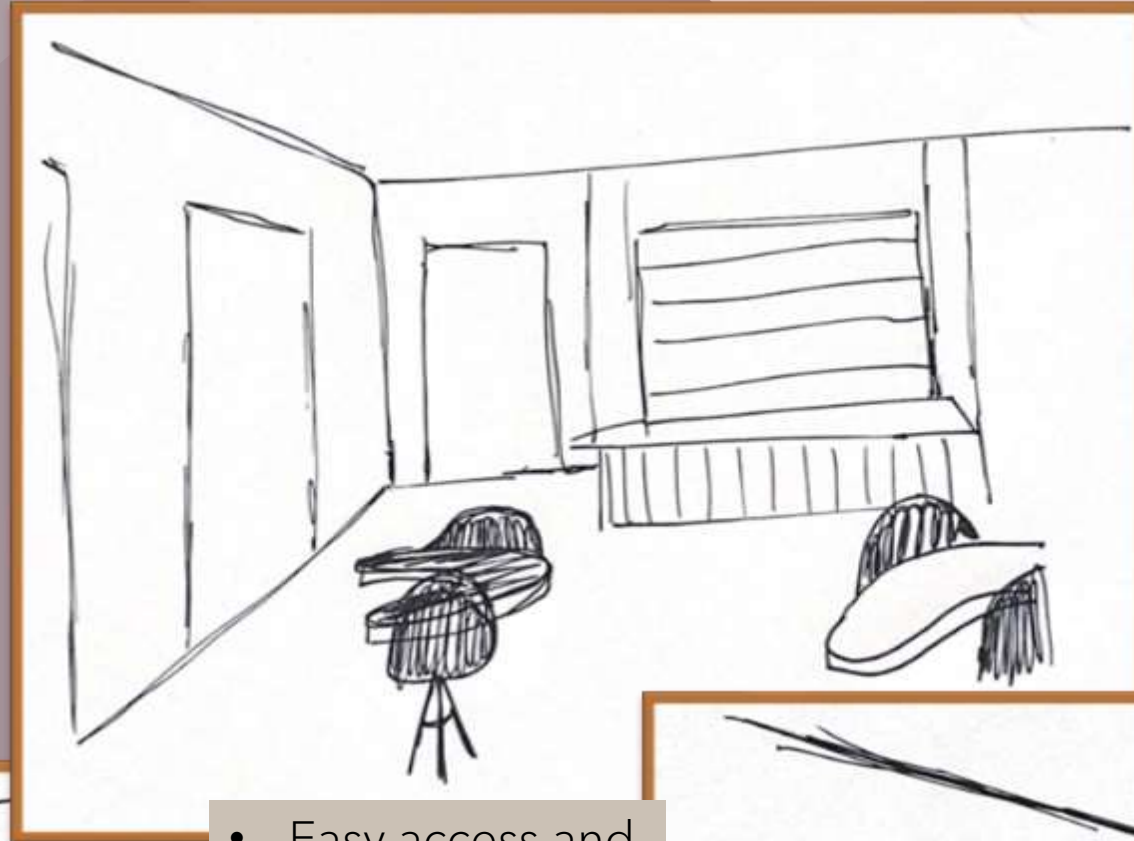




# PERSPECTIVE SKETCHES : LOBBY



- U-shaped bar providing more visual space
- Small group spaces for casual meetings
- Intimate seating areas for groups of 2



- Easy access and wide circulation paths
- Plants and greenery for a living feel
- Downlights for larger spaces



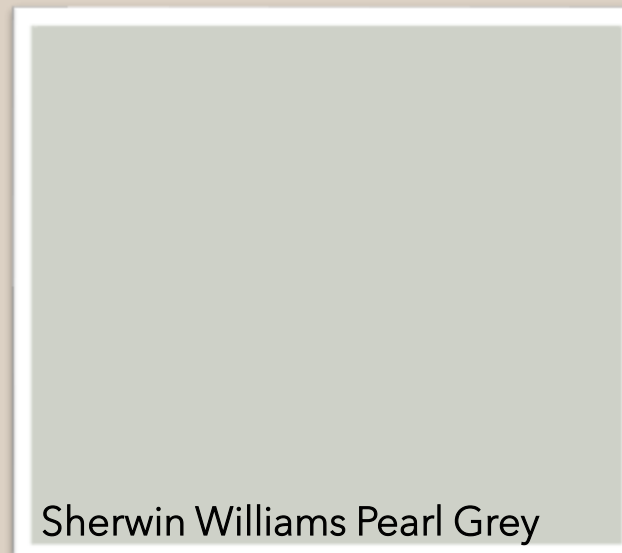
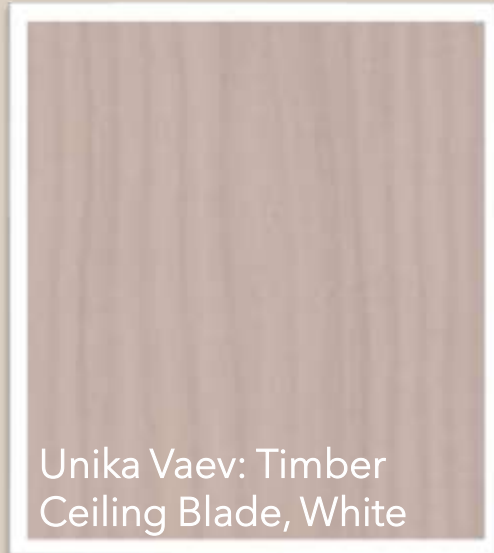
# LIGHTING : LOBBY

- Boho down lights over large area, gold finish bright/pops
- Black finish industrial multilight over medium areas to break up from "main" areas
- Boho design/ industrial finish bar lights around tabletop and bar





# FURNITURE & FINISHES : LOBBY



- Boho and industrial look
- Woods, metals, textures
- Light greens and plants
- Jewel and earth tones



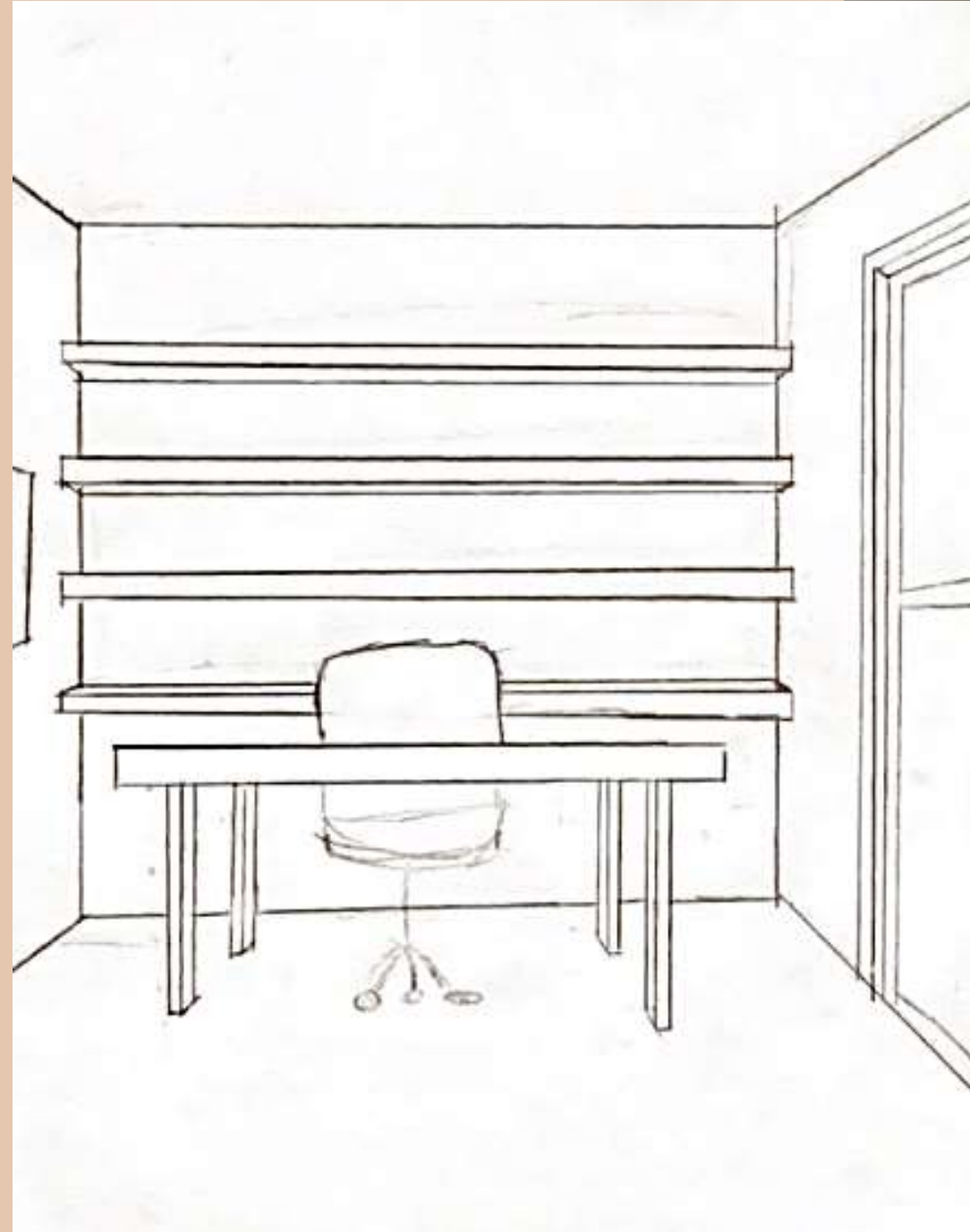
# SIDE COURTYARD

## PAIGE CARRICK



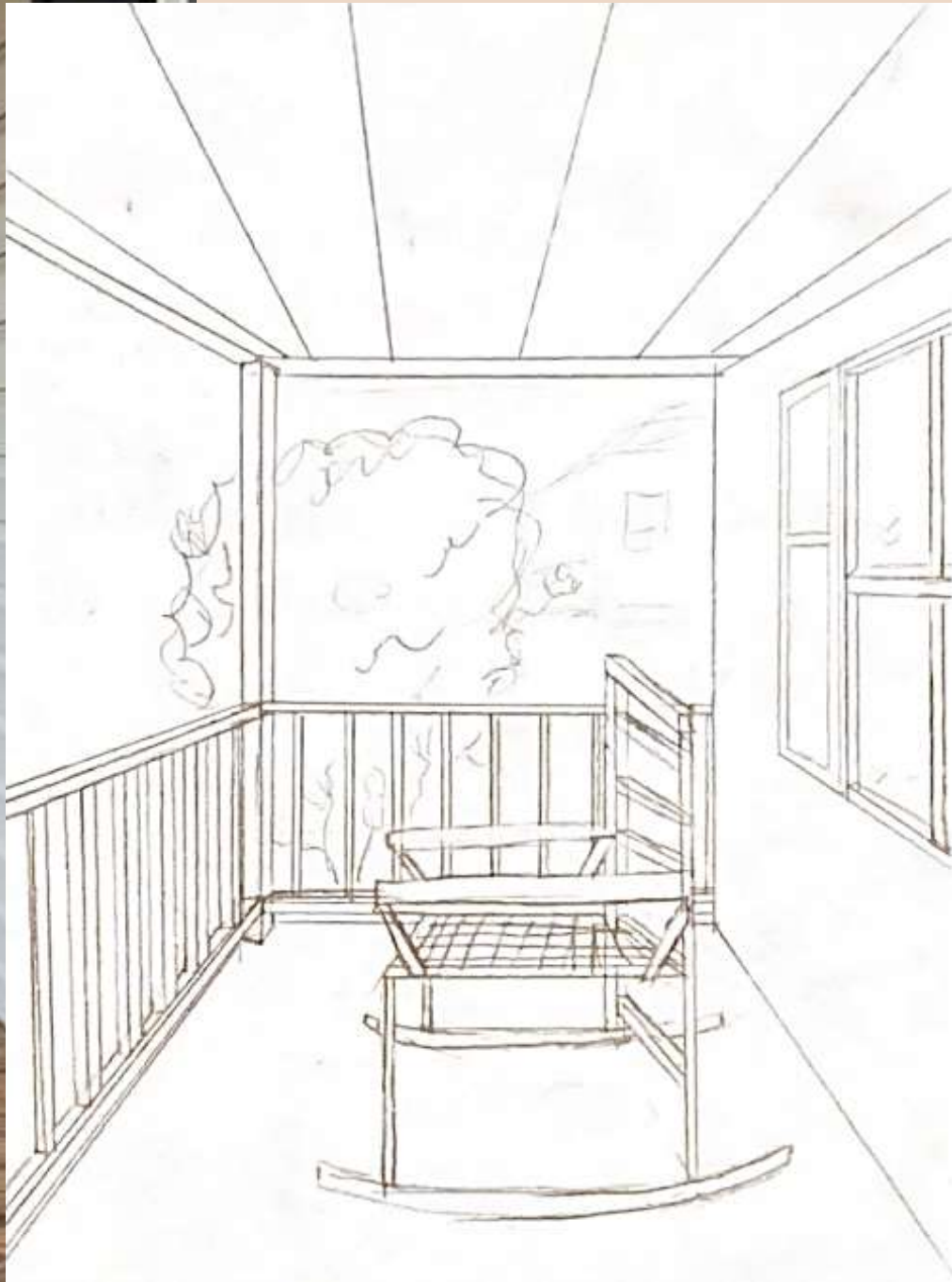
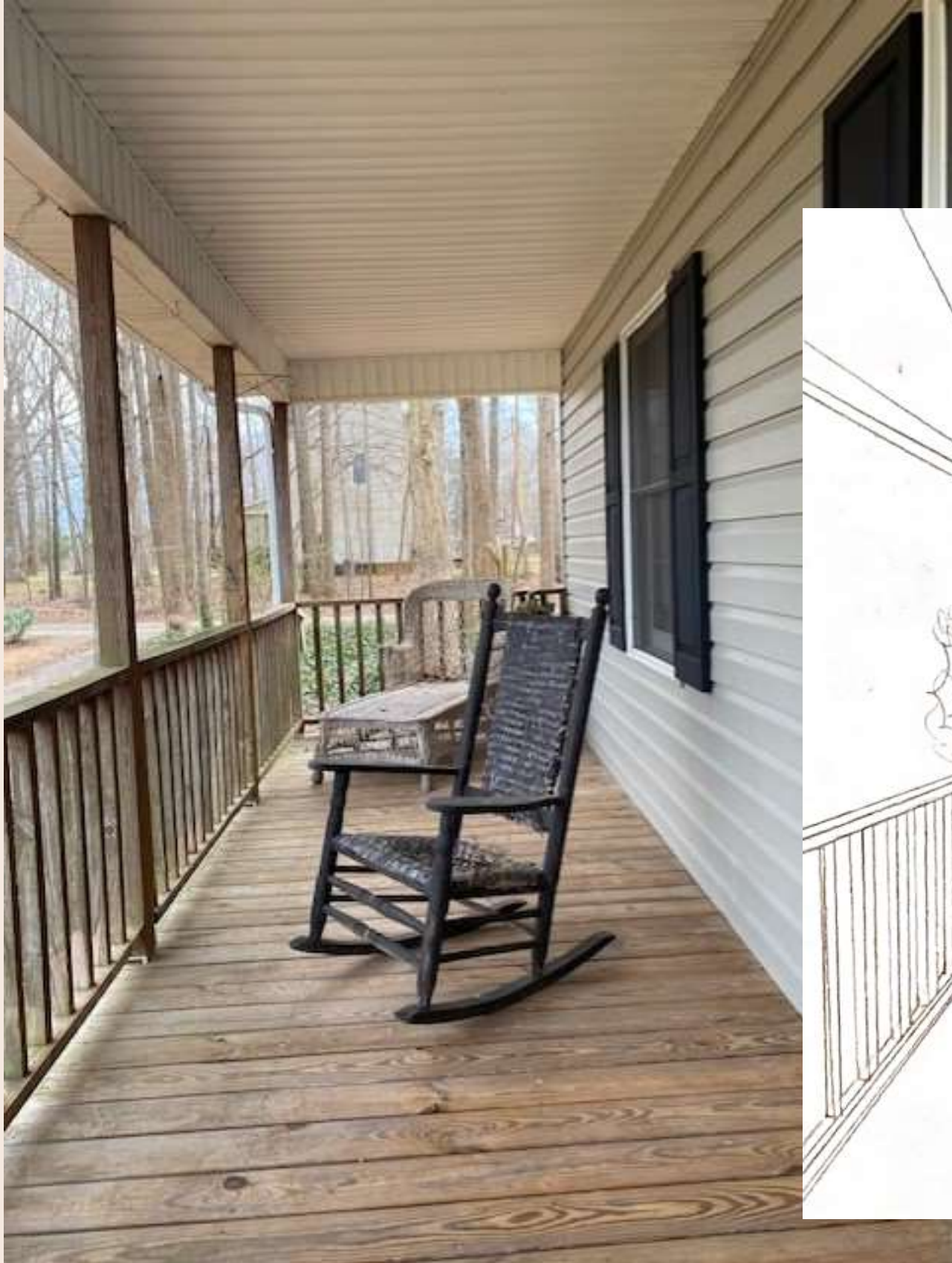
# Spatial Concept Spaces : Diffuse Focus Work/ Sketching

- Inspiration
- Natural Light
- Seclusion
- Quiet





# Spatial Concept Spaces : Daydreaming



- Fresh Air
- Daylight
- Nature
- Cozy Seating



# Spatial Concept Spaces : Group Planning / Meeting

- Workspace
- Options
- Inviting
- Inspirational



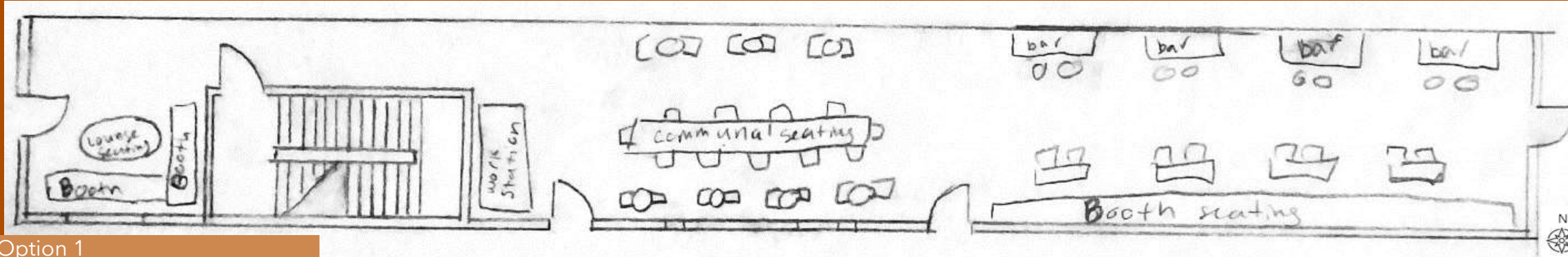
# Spatial Concept Spaces : Socializing



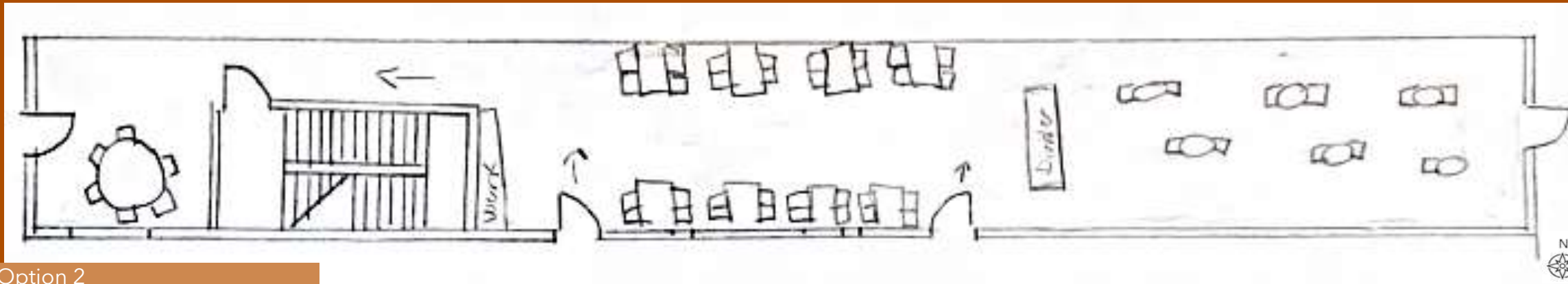
- Space
- Open
- Comfy Seating
- Welcoming



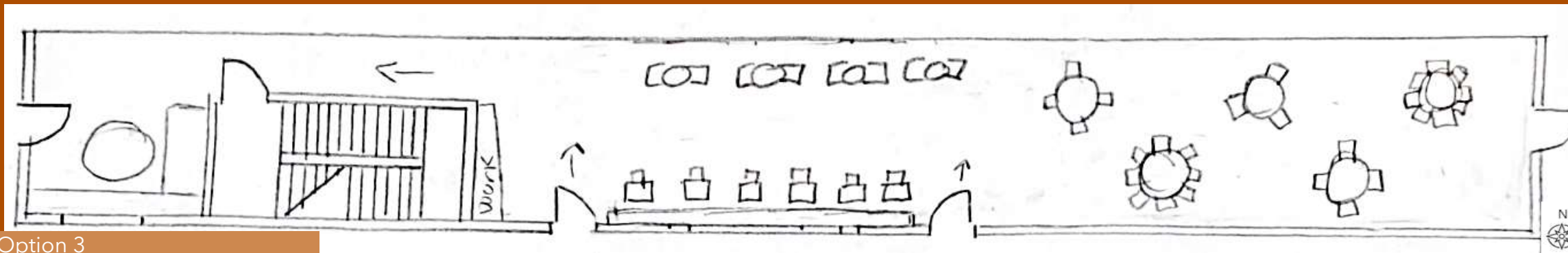
# PLAN SKETCHES : SIDE COURTYARD



Option 1



Option 2



Option 3



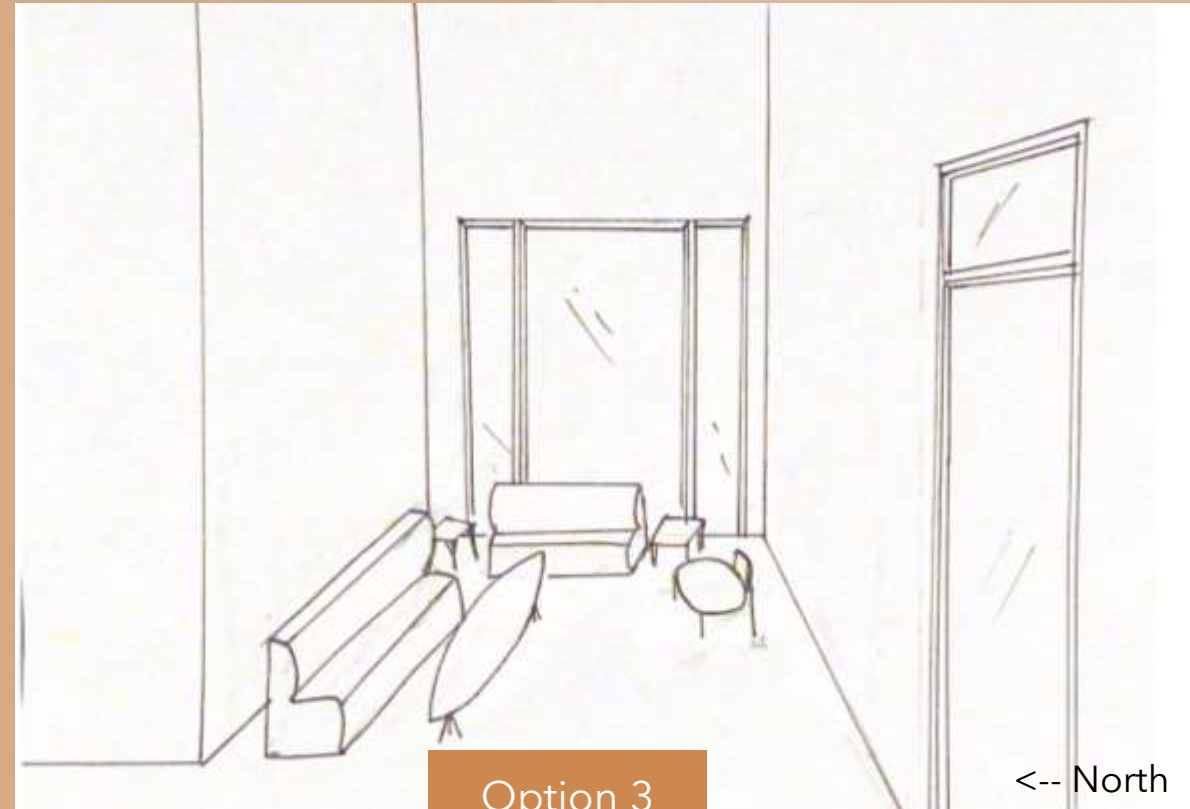
Option 4

# PERSPECTIVE SKETCHES : SIDE COURTYARD



Option 1

<-- East



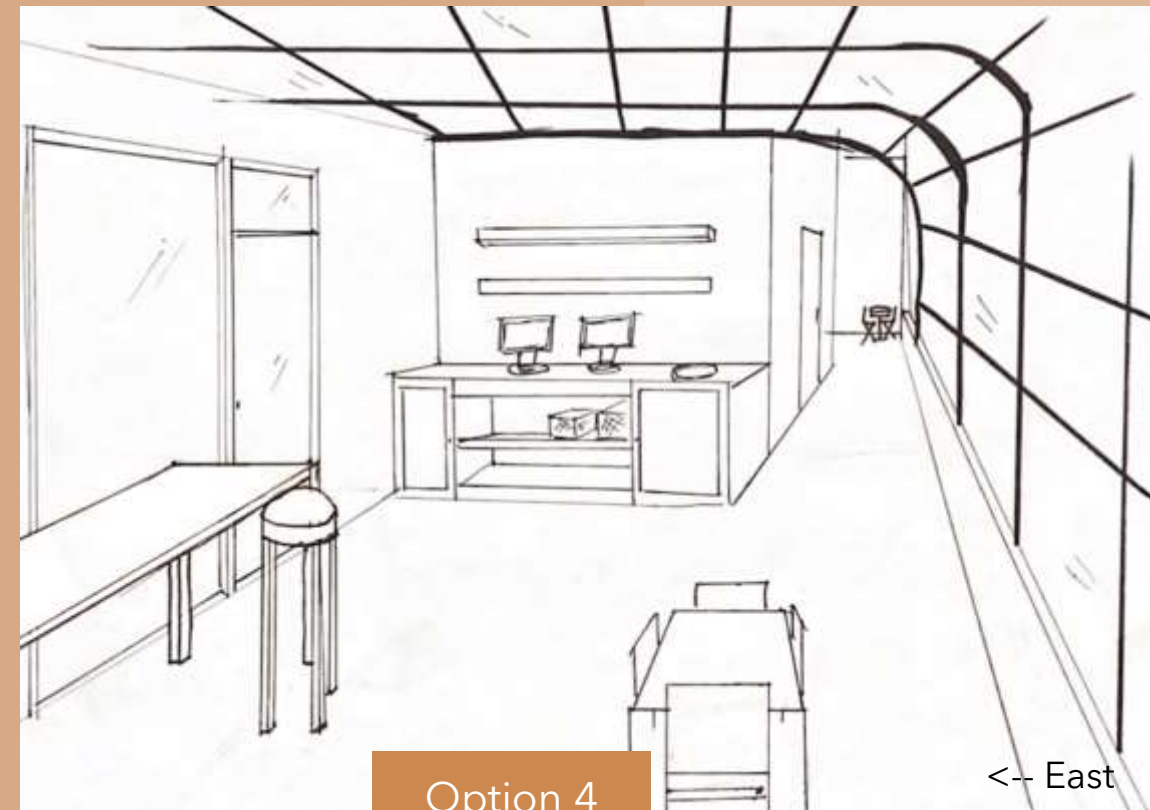
Option 3

<-- North



Option 2

<-- North



Option 4

<-- East



# FINISHES & LIGHTING : Side Courtyard



Ceiling Fan with Light



Ambient Lighting



Sconce and Pendent Lighting



# FURNITURE : Side Courtyard

Dining Chairs and Bench



Seating



Dining and Bar Tables



Bar Stools



Coffee and Side Tables

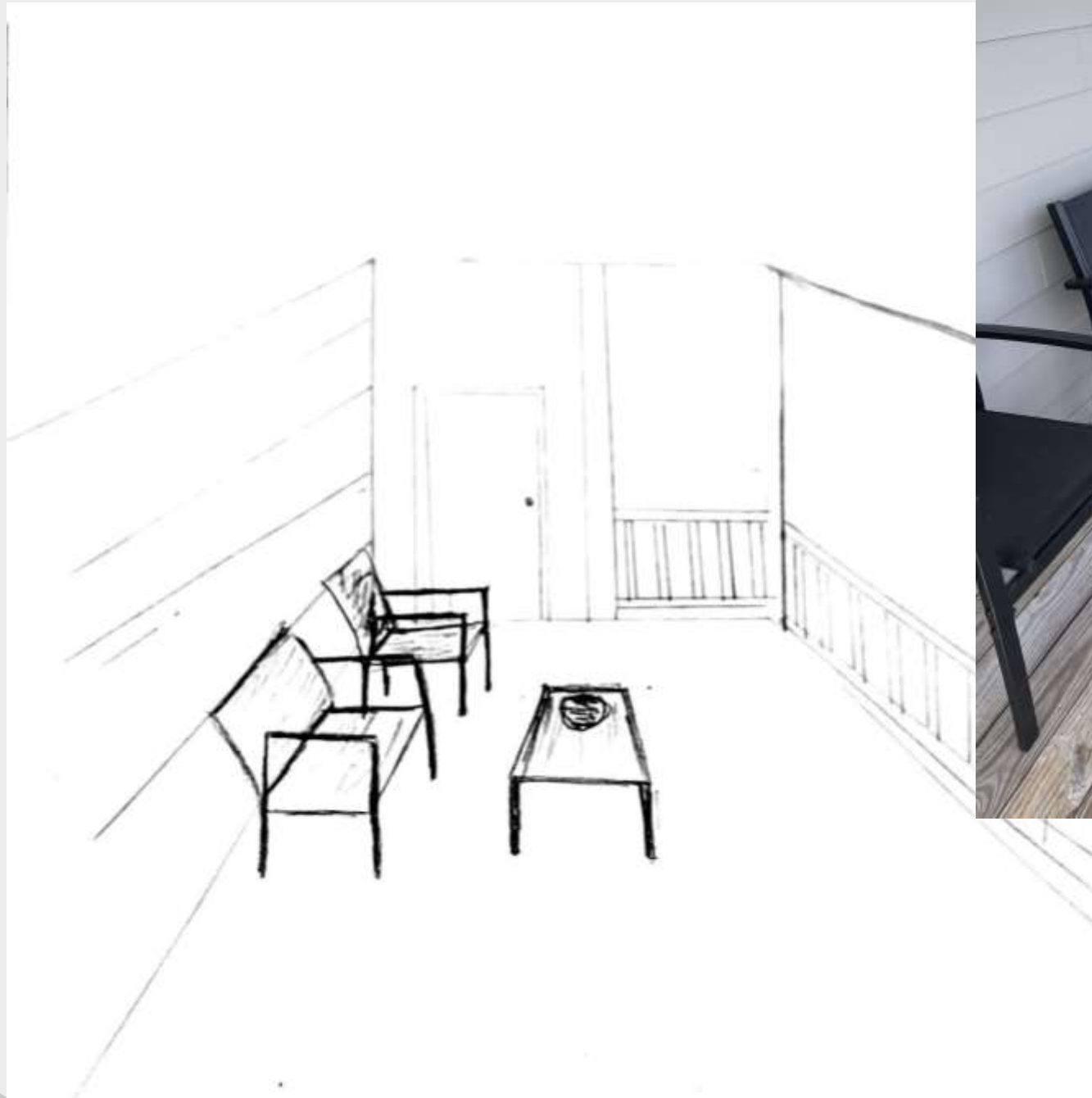




# ROOFTOP BAR

## REBEKAH FRY

# Spatial Concept Spaces : Daydreaming



- Sunlight
- Calming
- Nice Breeze



# Spatial Concept Spaces : Group Planning / Meeting



- Comfortable Seating
- Easy to Socialize
- Bright
- Spacious

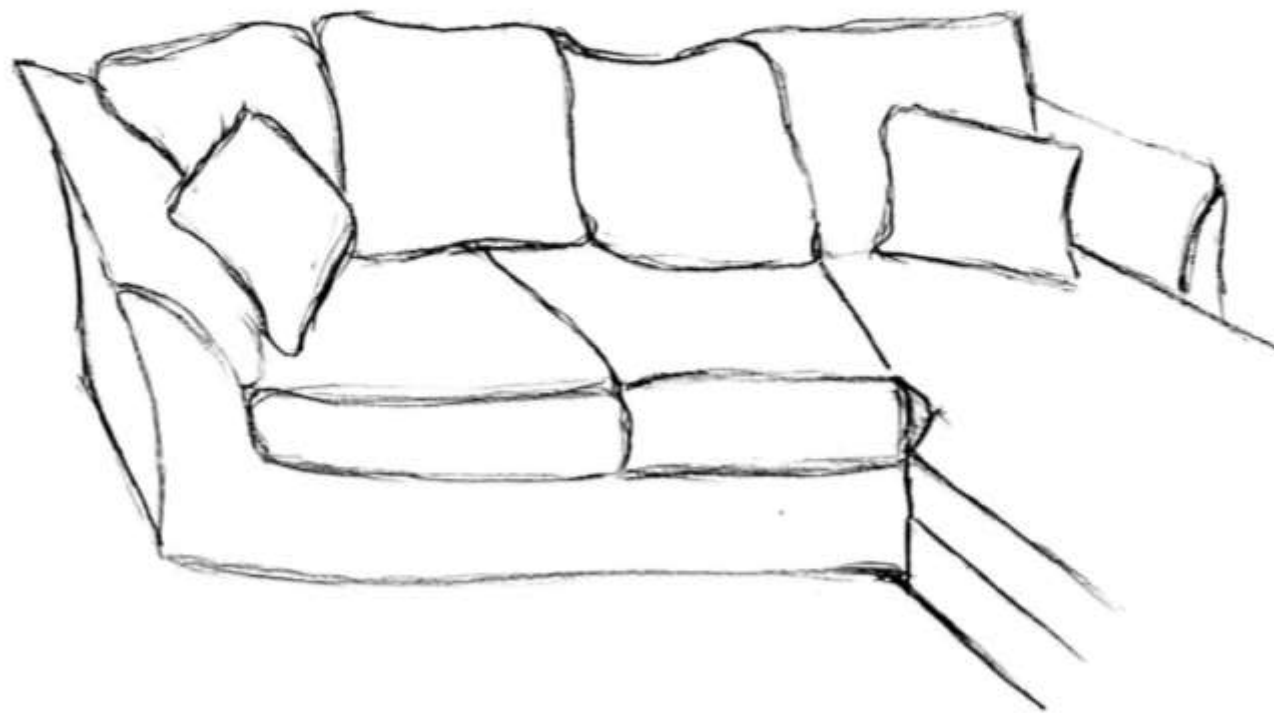
# Spatial Concept Spaces : Diffuse Focus Work/ Sketching



- Inspirational
- Smooth Surface
- Good Lighting

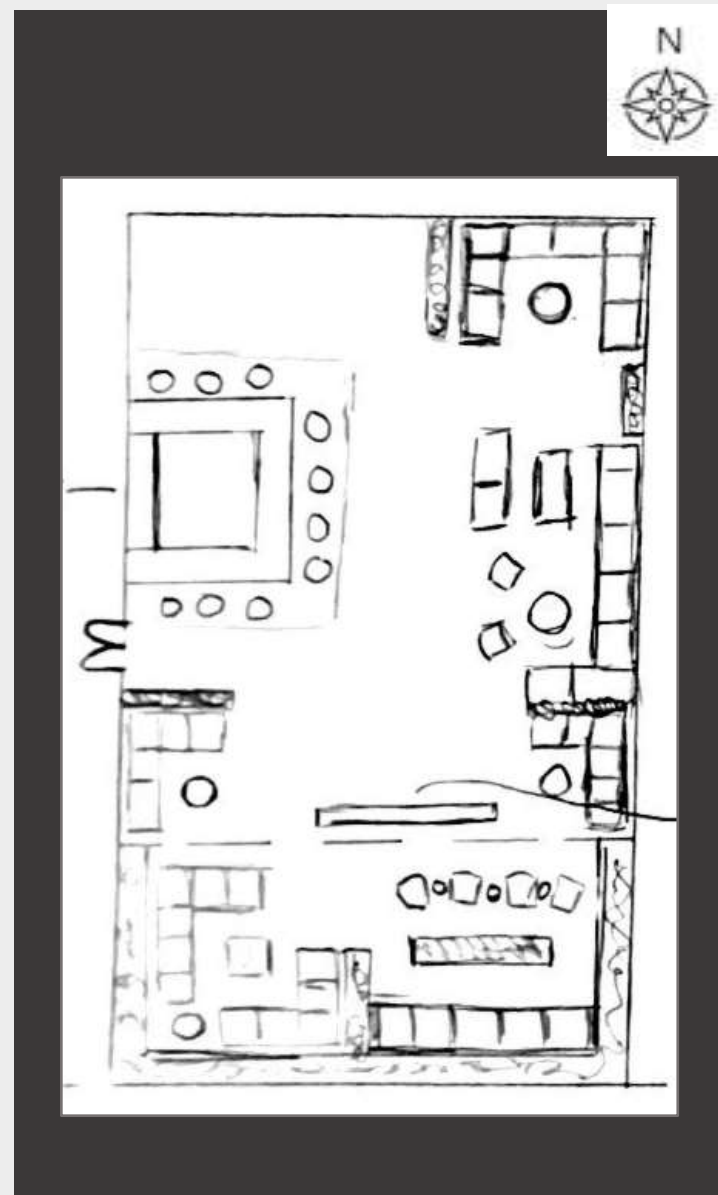


# Spatial Concept Spaces : Socializing

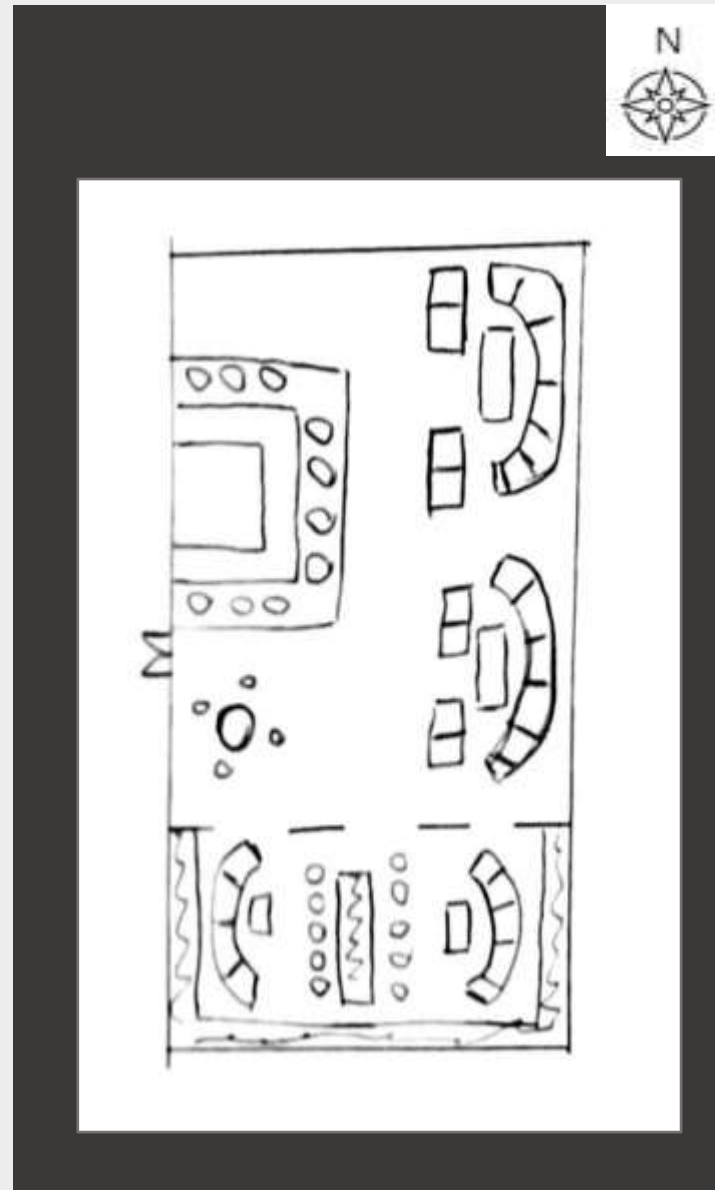


- Comfortable
- Inviting
- Spacious

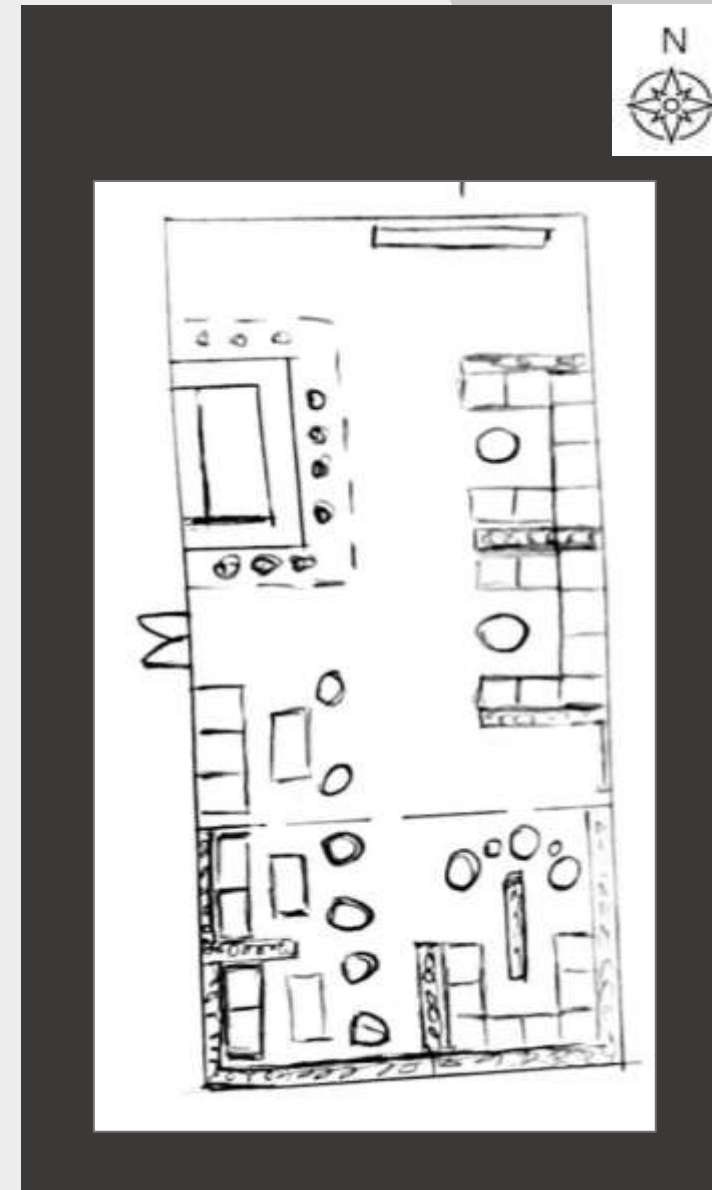
# PLAN SKETCHES : ROOFTOP BAR



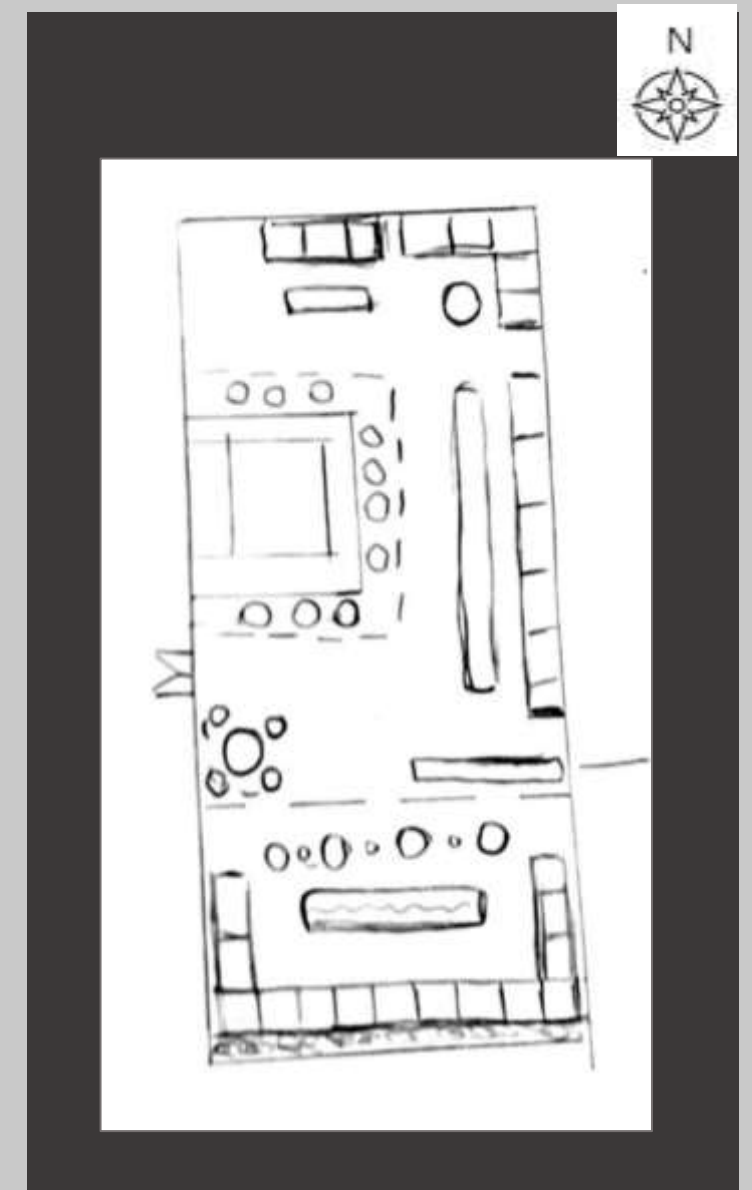
Option 1



Option 2



Option 3

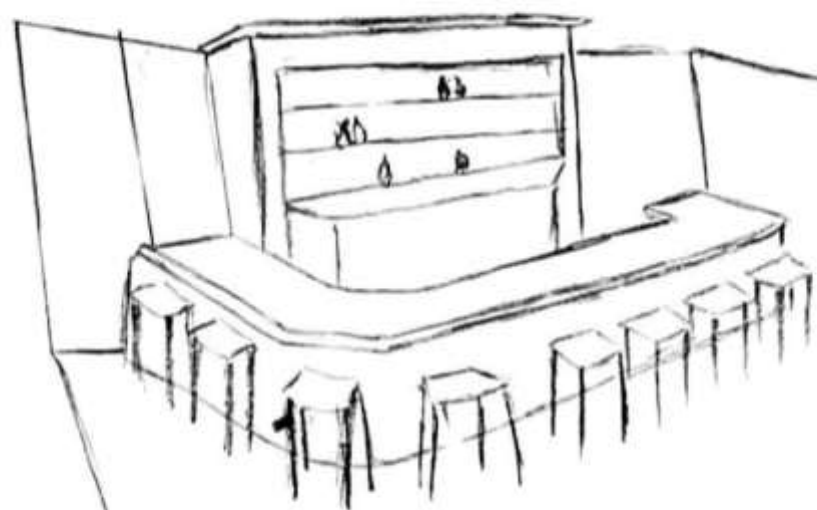


Option 4

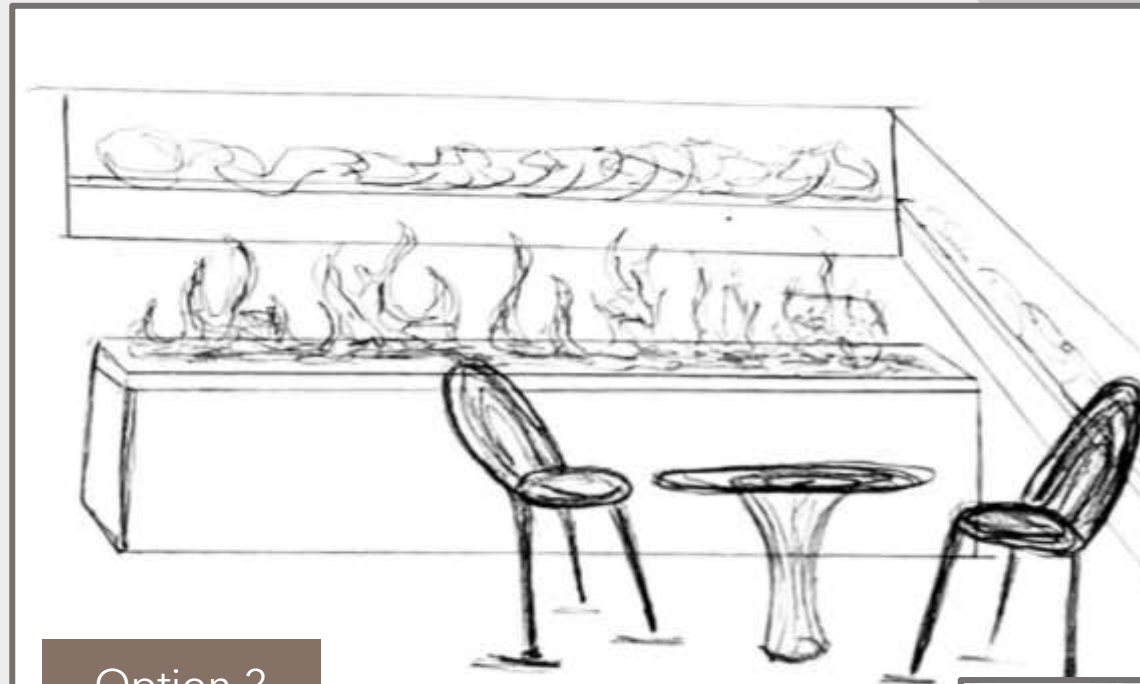


# PERSPECTIVE SKETCHES : ROOFTOP BAR

- Plenty of seating around the bar
- Big counter space
- Open shelving



Option 1

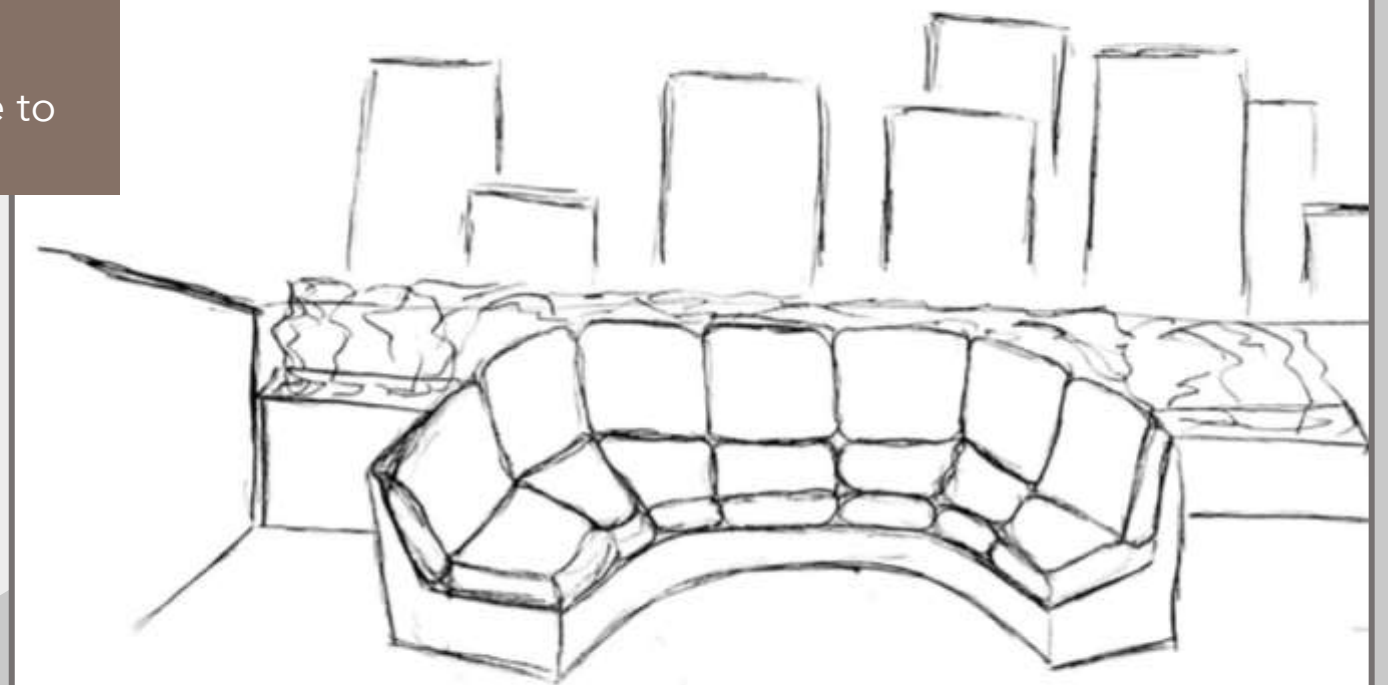


Option 2

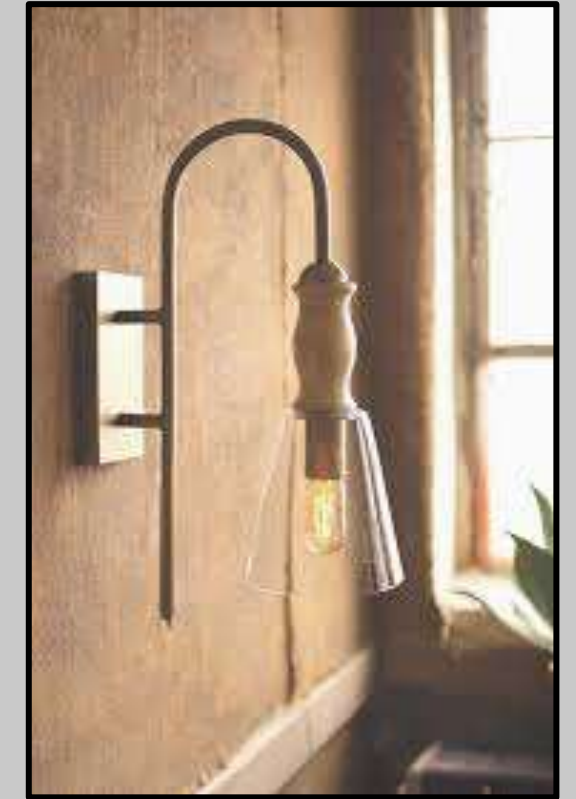
- Greenery
- Outdoor fireplace
- Comfortable seating outside to eat and drink food

- Comfortable seating
- Sits big groups
- Greenery
- Outdoor views

Option 3



# LIGHTING : Rooftop Bar





# FURNITURE & FINISHES : ROOFTOP BAR



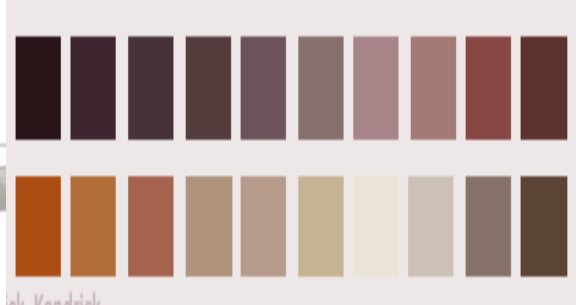
Concrete



Gold Finishes



Marble Flooring



Color Palette



# DESIGN CHALLENGE RESOLUTION STATEMENT

---

**How do we make the spaces appealing to all ages?    How can we be inspired by ECU in an elegant way?**

- Have repeat guest
  - Word of mouth
- Have a media presence
- Aesthetically pleasing
- Capture the eye on the ECU student
  - "A Bloggers Dream"



# Hilton Garden Inn

Greenville, NC

## Thank You

Carrick, Fry, Joyner, and Kendrick



**CLARENDON**  
PROPERTIES



**6<sup>th</sup> Street Studio**  
Interior Designs

