

Hilton Garden Inn

Greenville, NC

Portfolio 3

Carrick, Fry, Joyner, and Kendrick



CLARENDON
PROPERTIES



6th Street Studio
Interior Designs



TABLE OF CONTENTS

2 Lobby

11 Lounge

20 Back Patio

29 Side Patio

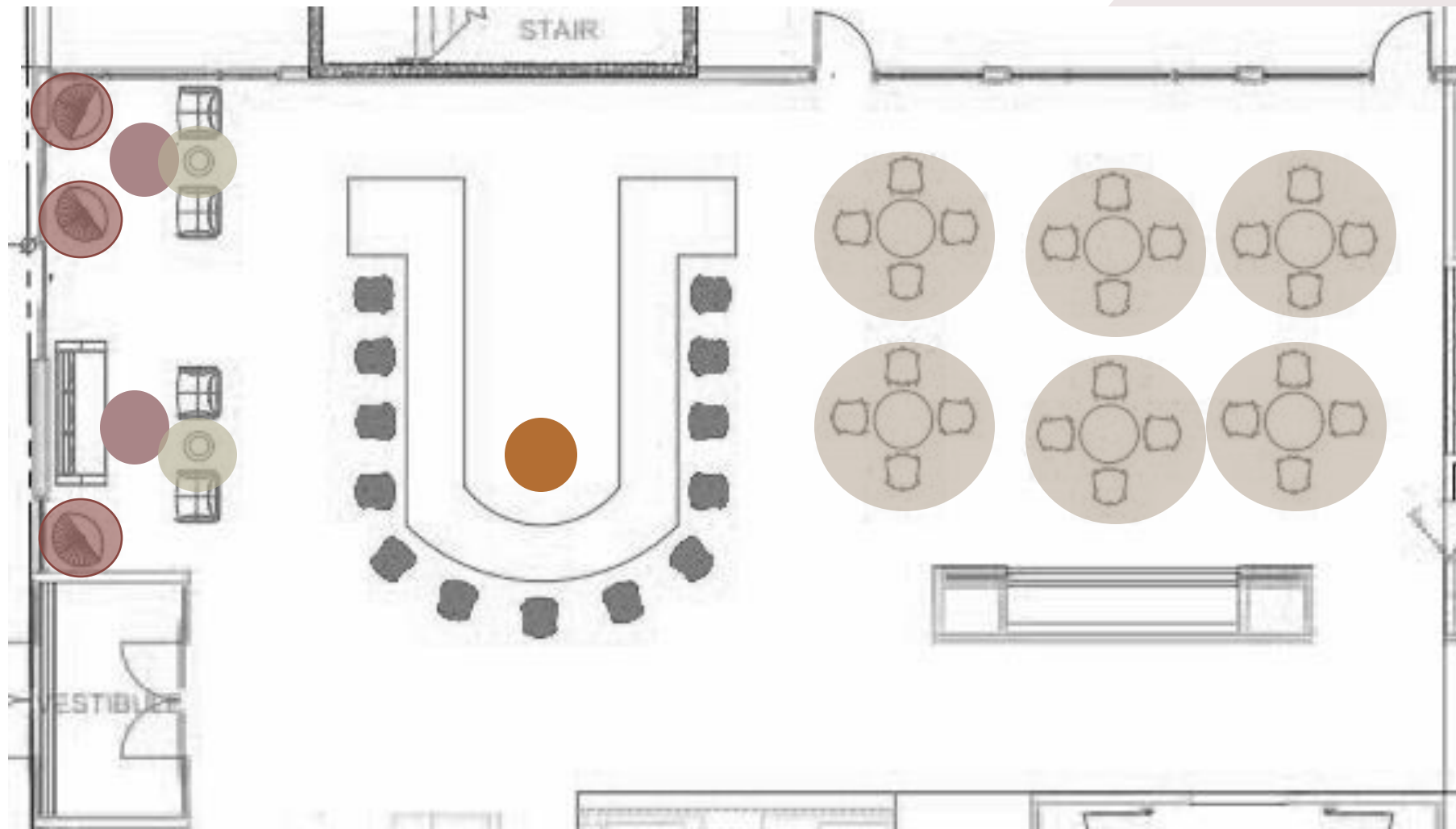
38 Rooftop Bar

46 Final Budget

LOBBY

MYAH KENDRICK

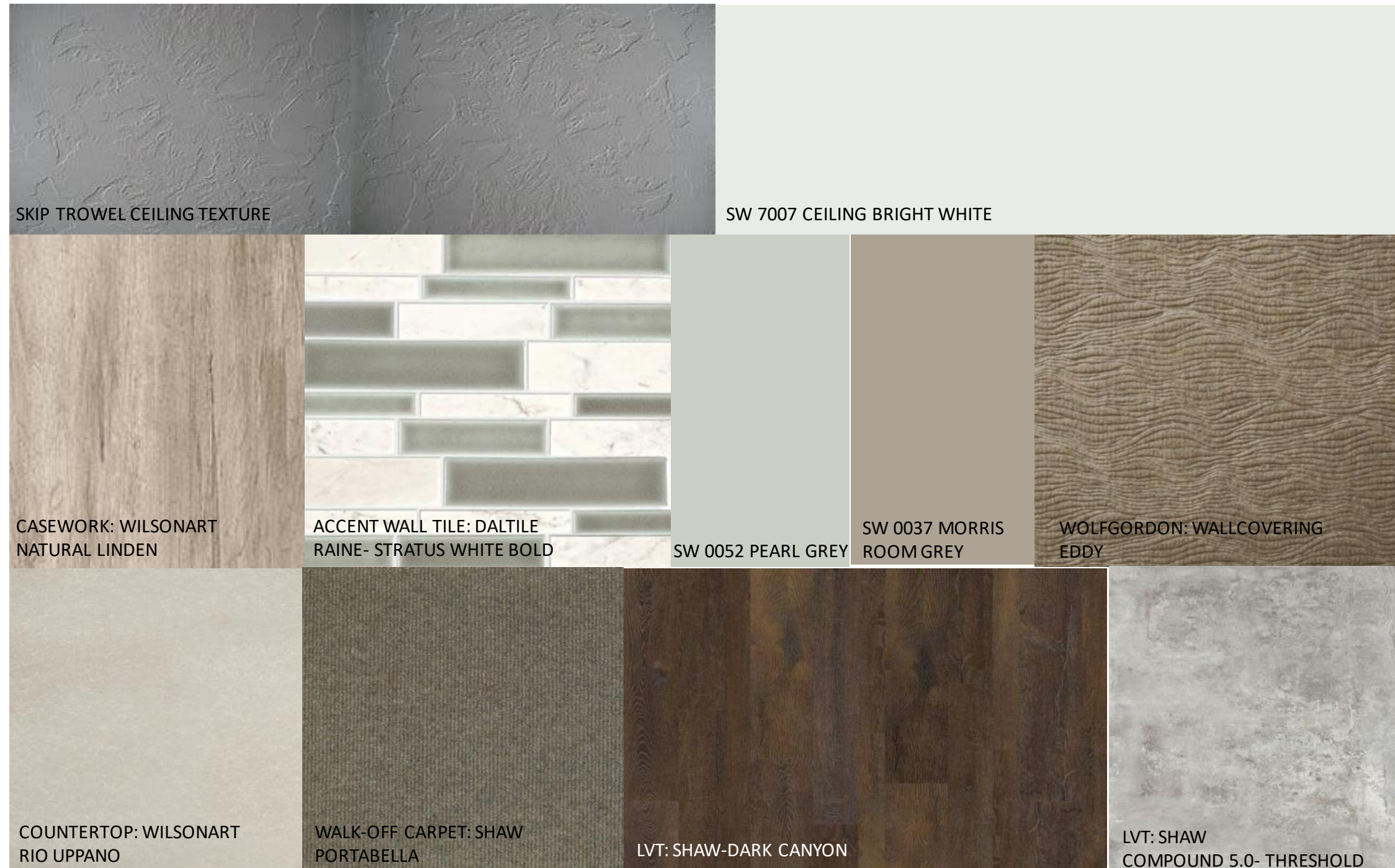
FURNITURE PLAN



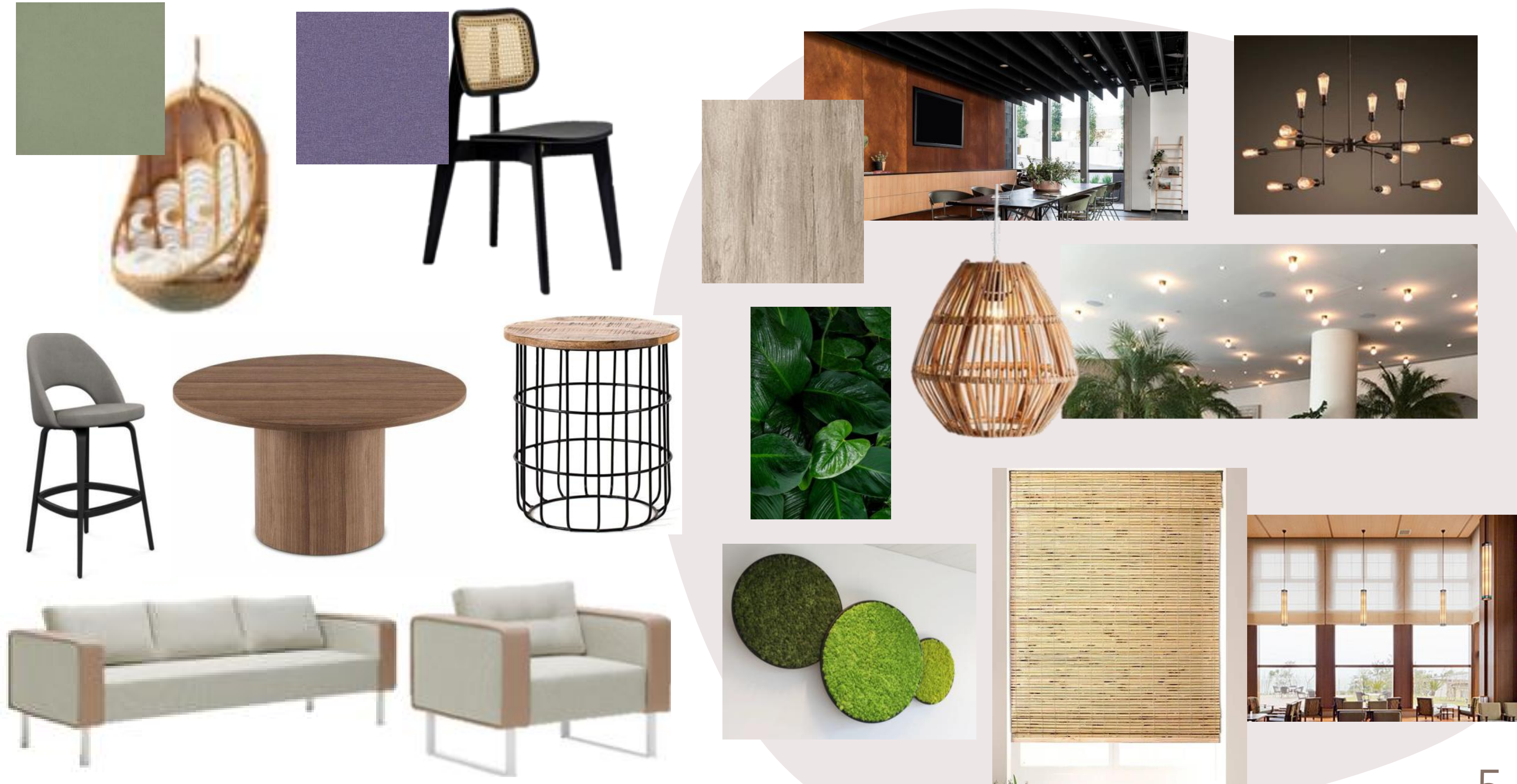
Scale: 1/8"=1'0"



FINISHES



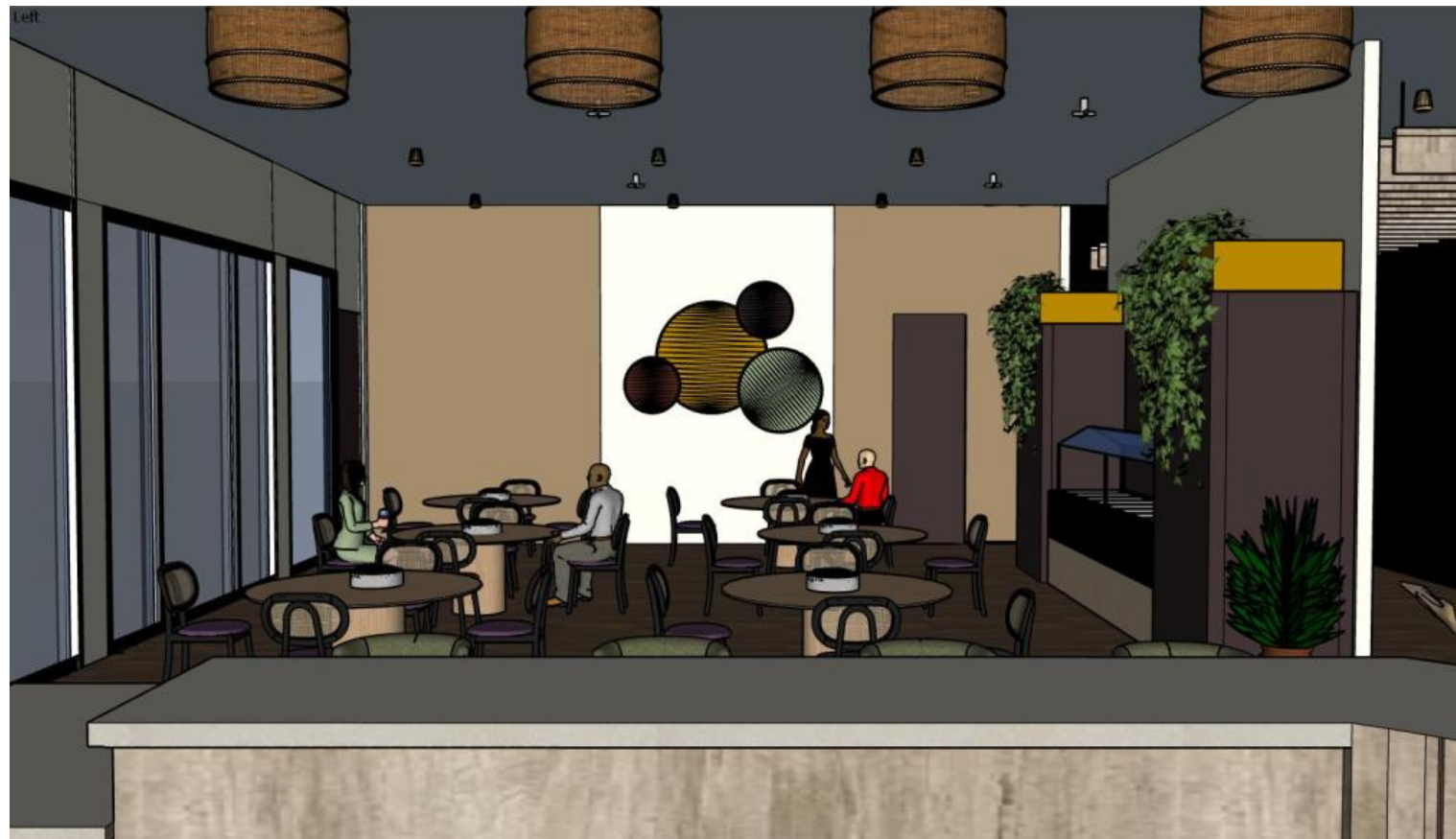
FURNITURE & WINDOW TREATMENTS



REFLECTED CEILING PLAN



BUILDING SECTIONS



Scale: NTS


RENDERED PERSPECTIVES



RENDERED PERSPECTIVES



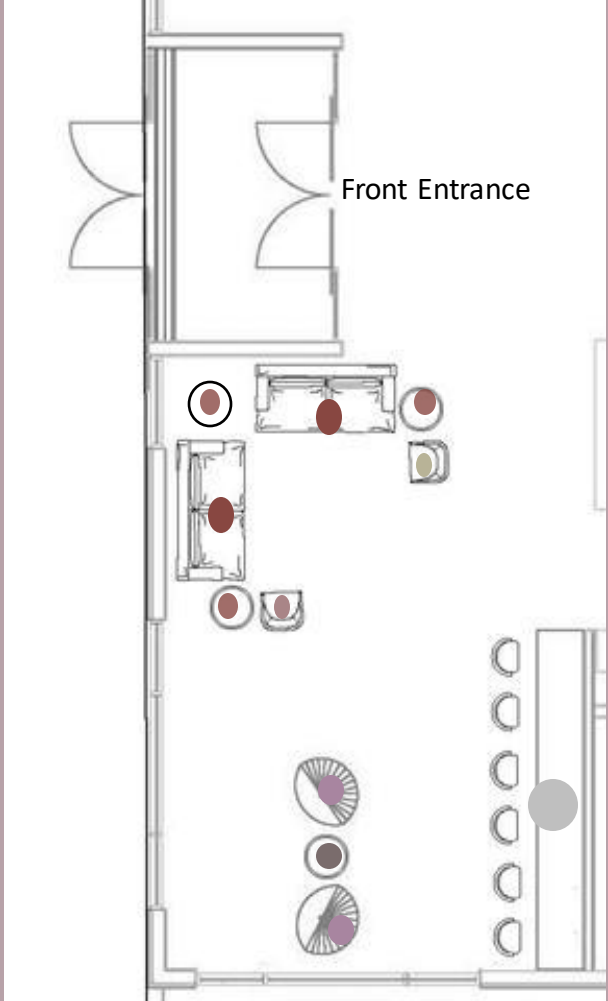
SPECIFICATIONS

Image	Description	Quantity	Price	Total
	Lounge Seating #1	3	\$3,400 +\$60/fabric seat custom	\$10,740
	Lounge Seating #2	4	\$2,500	\$10,000
	Lounge Seating #3	1	\$5,000	\$5,000
	Barstools	13	\$1,830 + \$100/ wooden back custom	\$25,090
	Side Tables	2	\$500	\$1,000
	Café Seating	24	\$675 + \$70/ fabric seat custom	\$17,880
	Café Tables	6	\$5,000	\$30,000

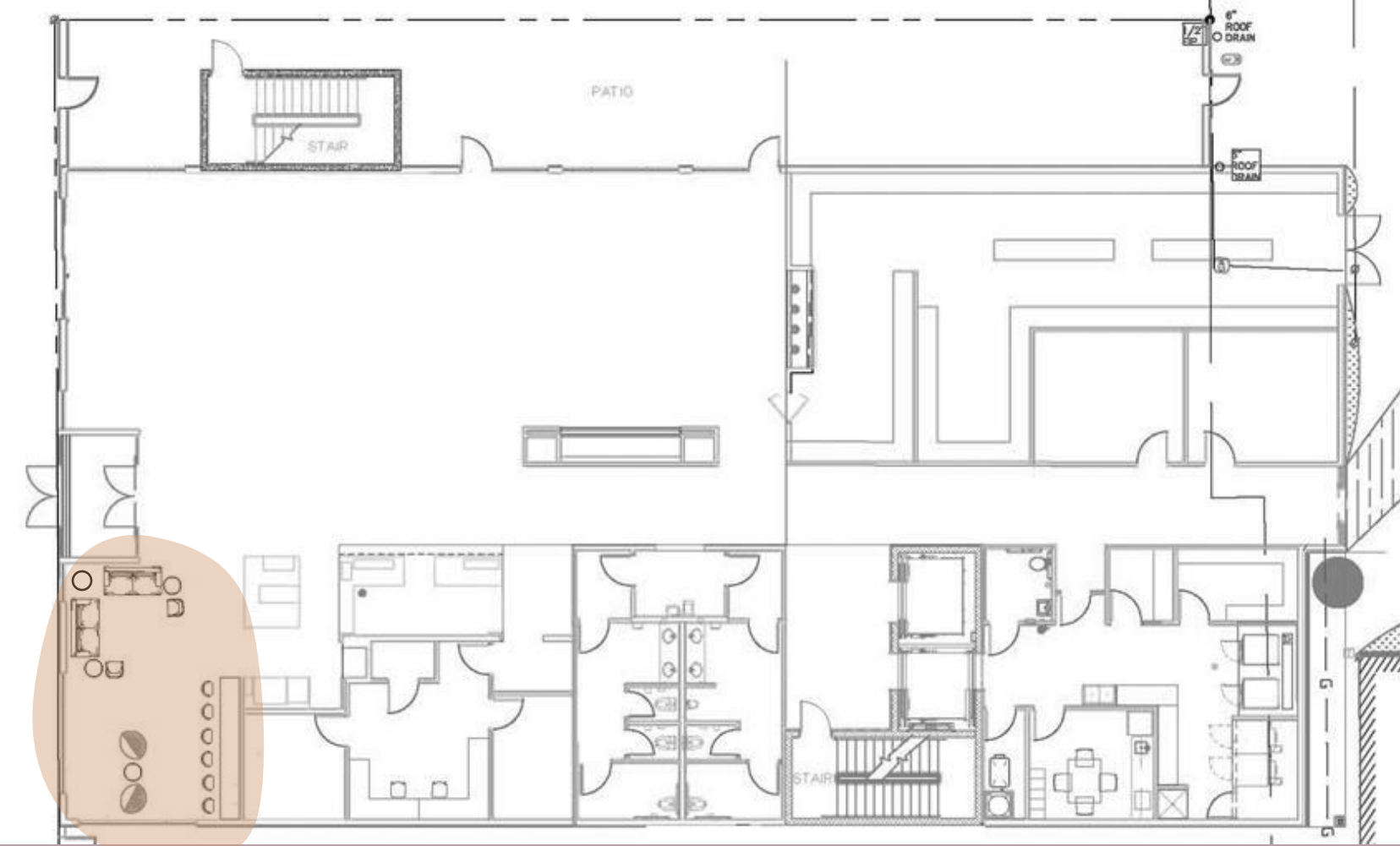
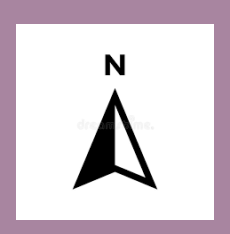
Budget	\$174,420
Total	\$99,710
Discounted Total (50%)	\$49,855

LOUNGE
REBECCA JOYNER

FURNITURE PLAN



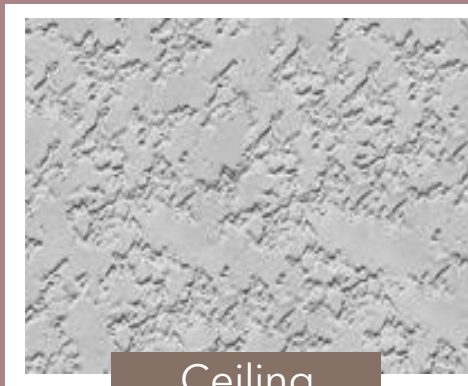
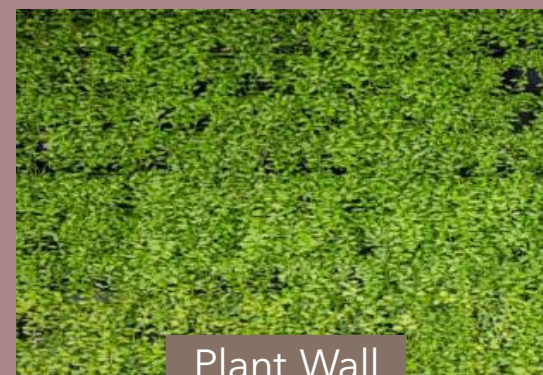
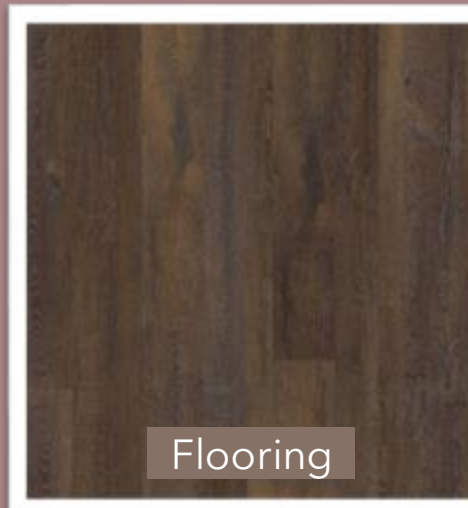
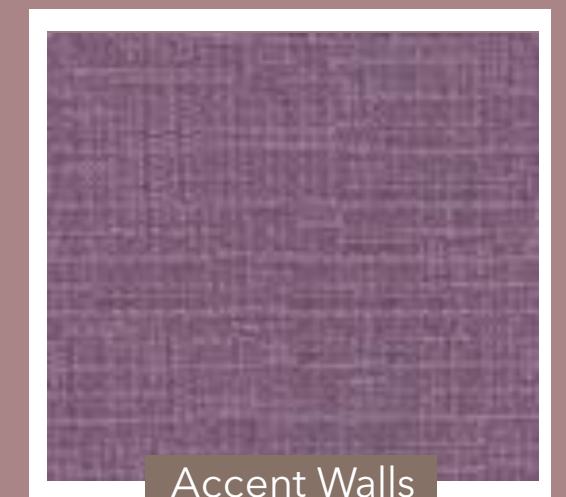
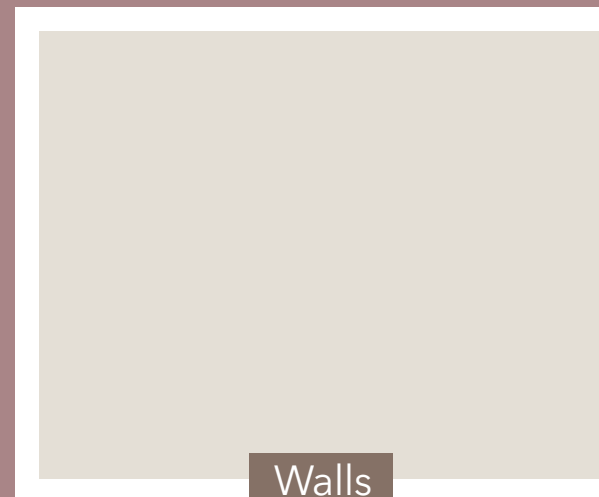
Scale: 1/8"=1'-0"



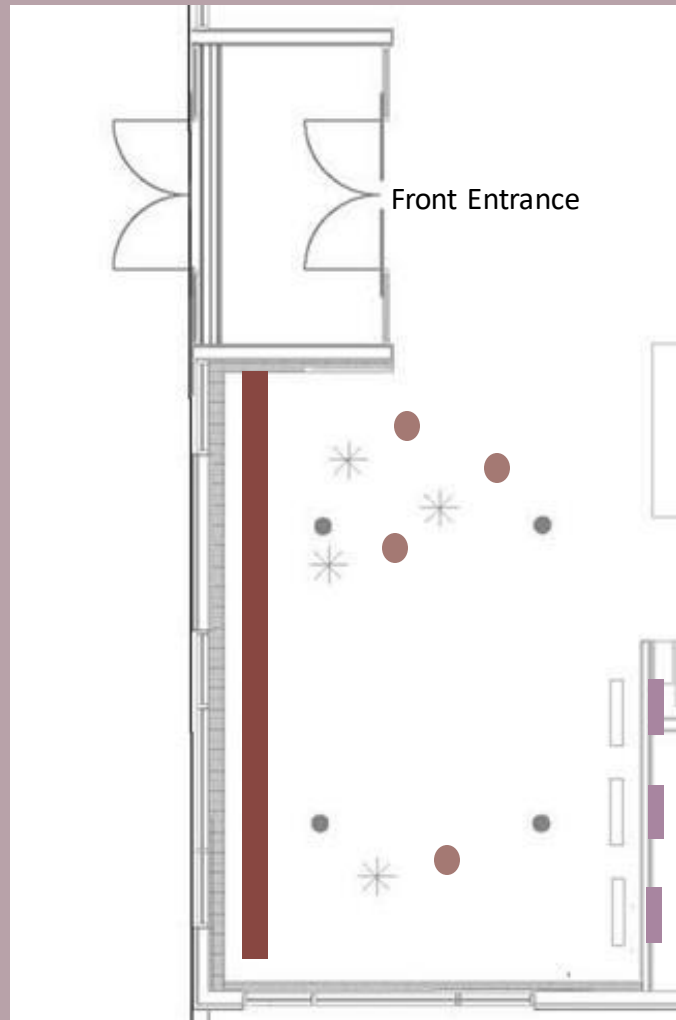
Scale: 1/16"=1'-0"



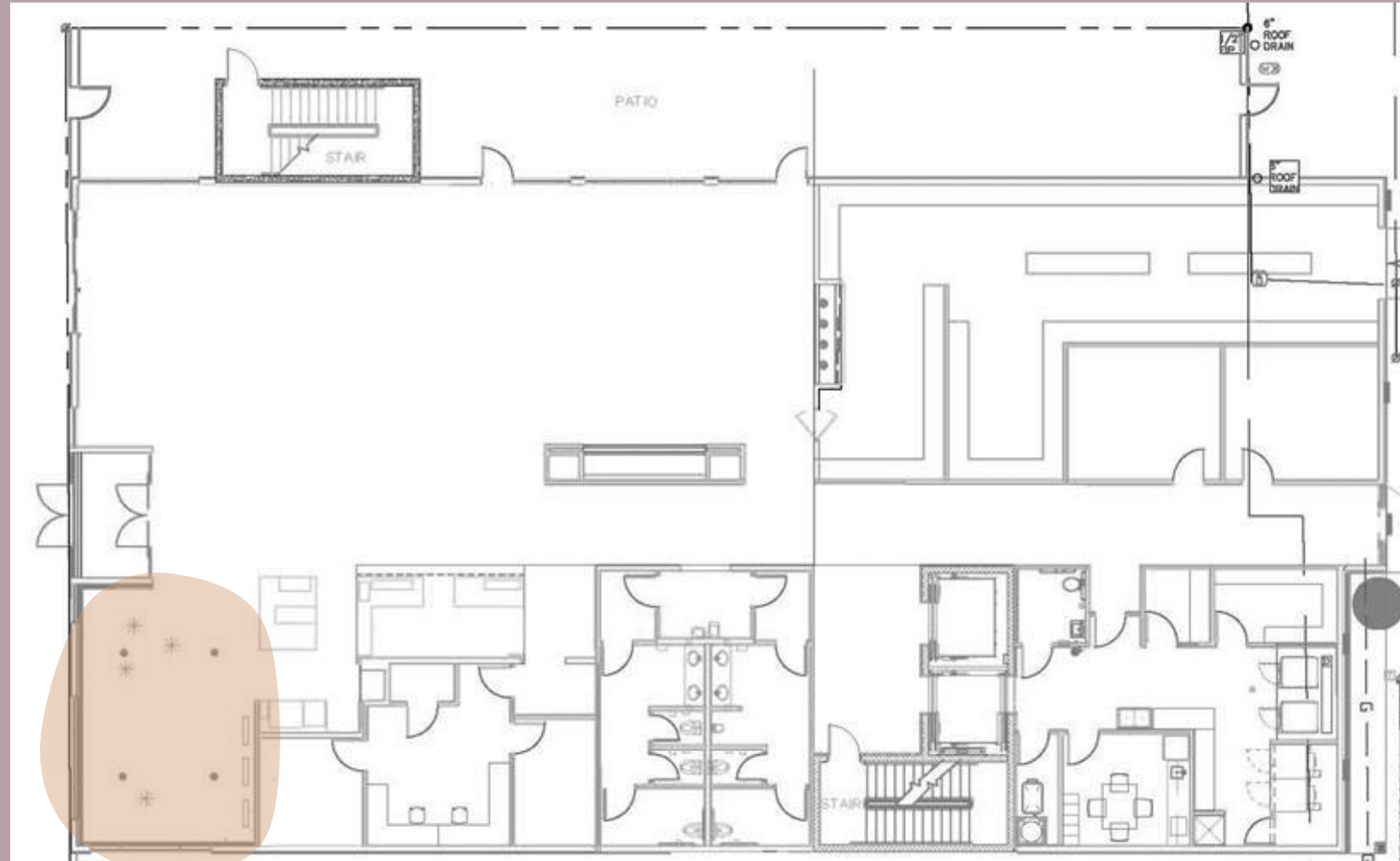
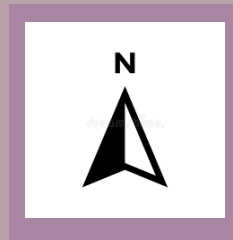
FURNITURE, FINISHES, & WINDOW TREATMENTS



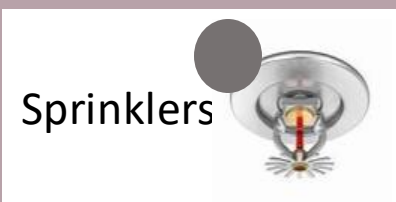
REFLECTED CEILING PLAN



Scale: 1/8"=1'0"



Scale: 1/16"=1'0"



Sprinklers

Light Fixtures



BUILDING SECTIONS



RENDERED PERSPECTIVES



RENDERED PERSPECTIVES



RENDERED PERSPECTIVES



SPECIFICATIONS

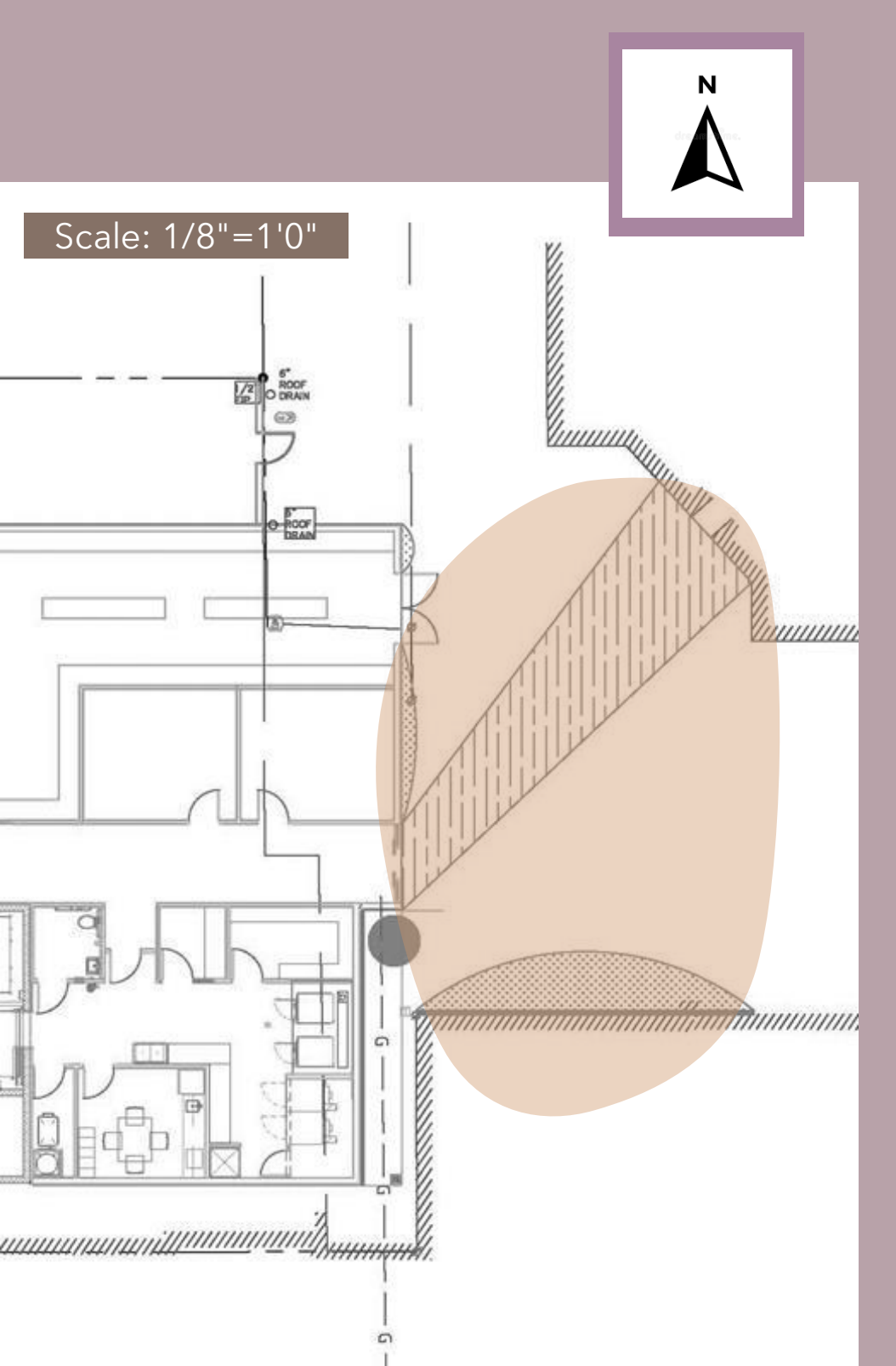
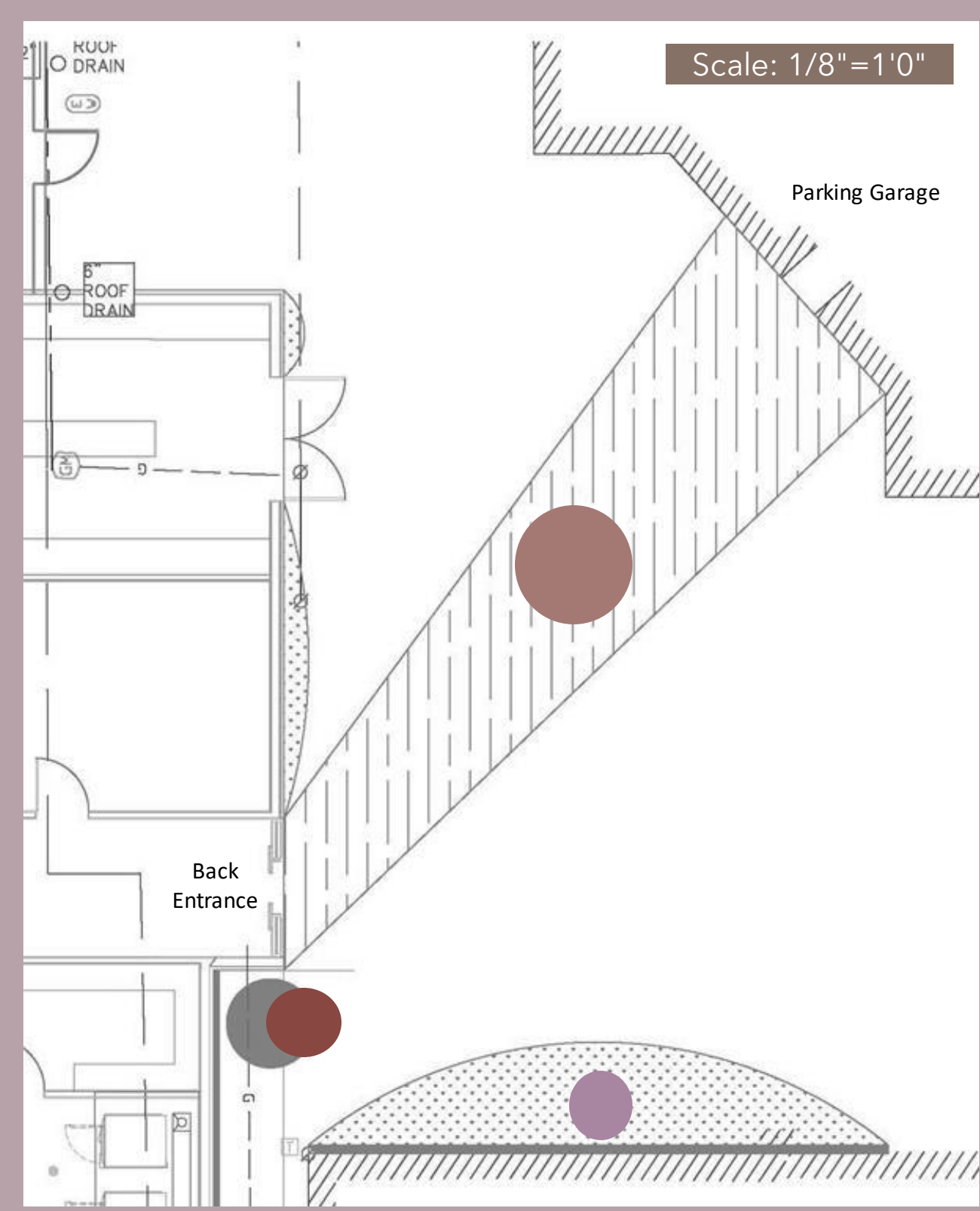
Image	Description	Quantity	Price	Total
	Lounge Seating #1	2	\$3,400	\$6,800
	Lounge Seating #2	2	\$1,900	\$3,800
	Lounge Seating #3	1	\$8,383	\$8,400
	Lounge Seating #4	1	\$525	\$525
	Side Table #1	3	\$1,100	\$3,300
	Side Table #2	1	\$800	\$800
	Bar Seating	2	\$1,500	\$3,000

Budget	\$36,420
Total	\$26,625
Discounted Total (50%)	\$13,312.50



BACK PATIO
REBECCA JOYNER

FURNITURE PLAN



FURNITURE, FINISHES, & WINDOW TREATMENTS



Jonathan Bowling
Recycled Metal Sculpture



Glass and Aluminum
Canopy with Gold Finish



Plant Wall

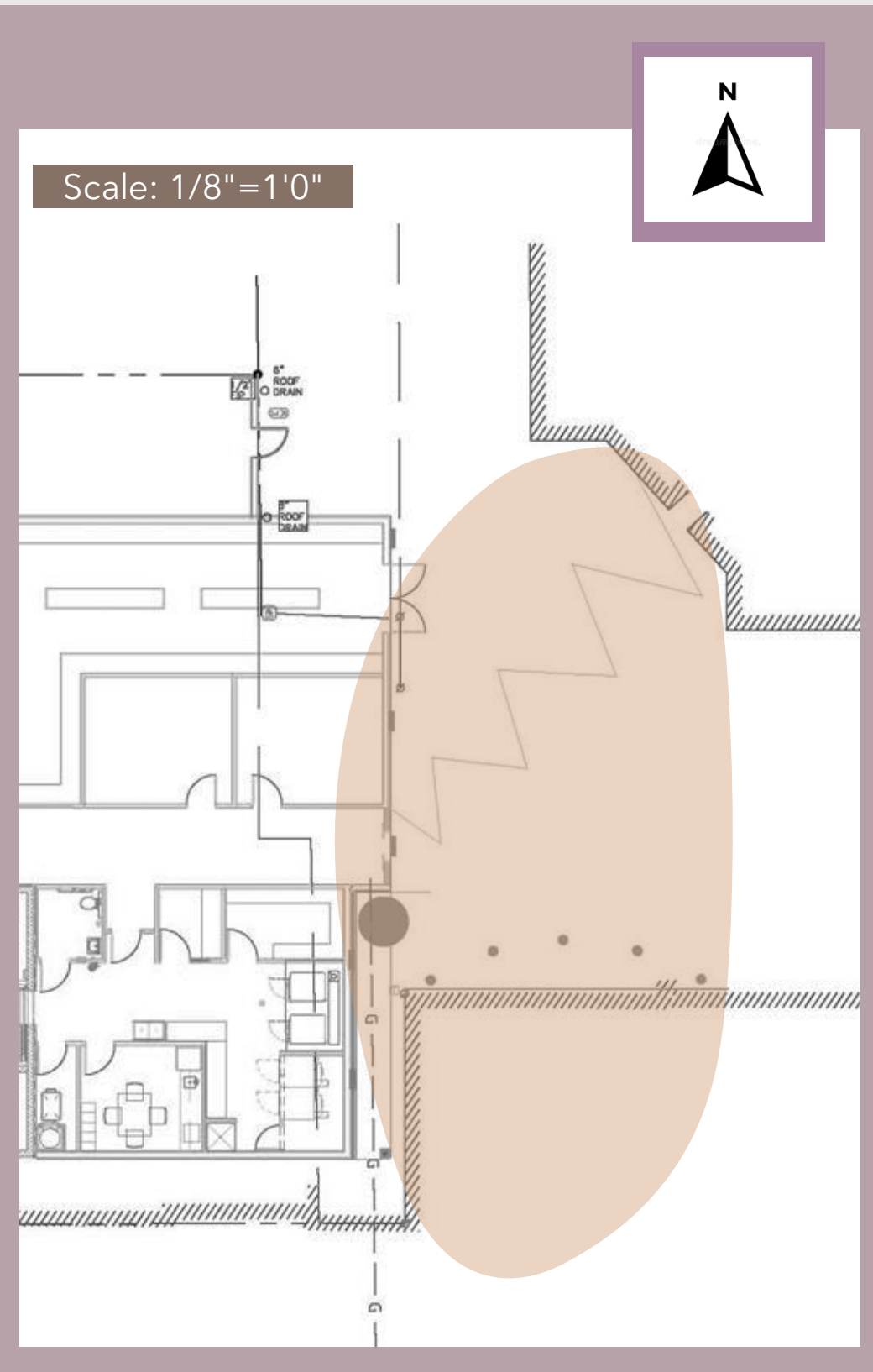
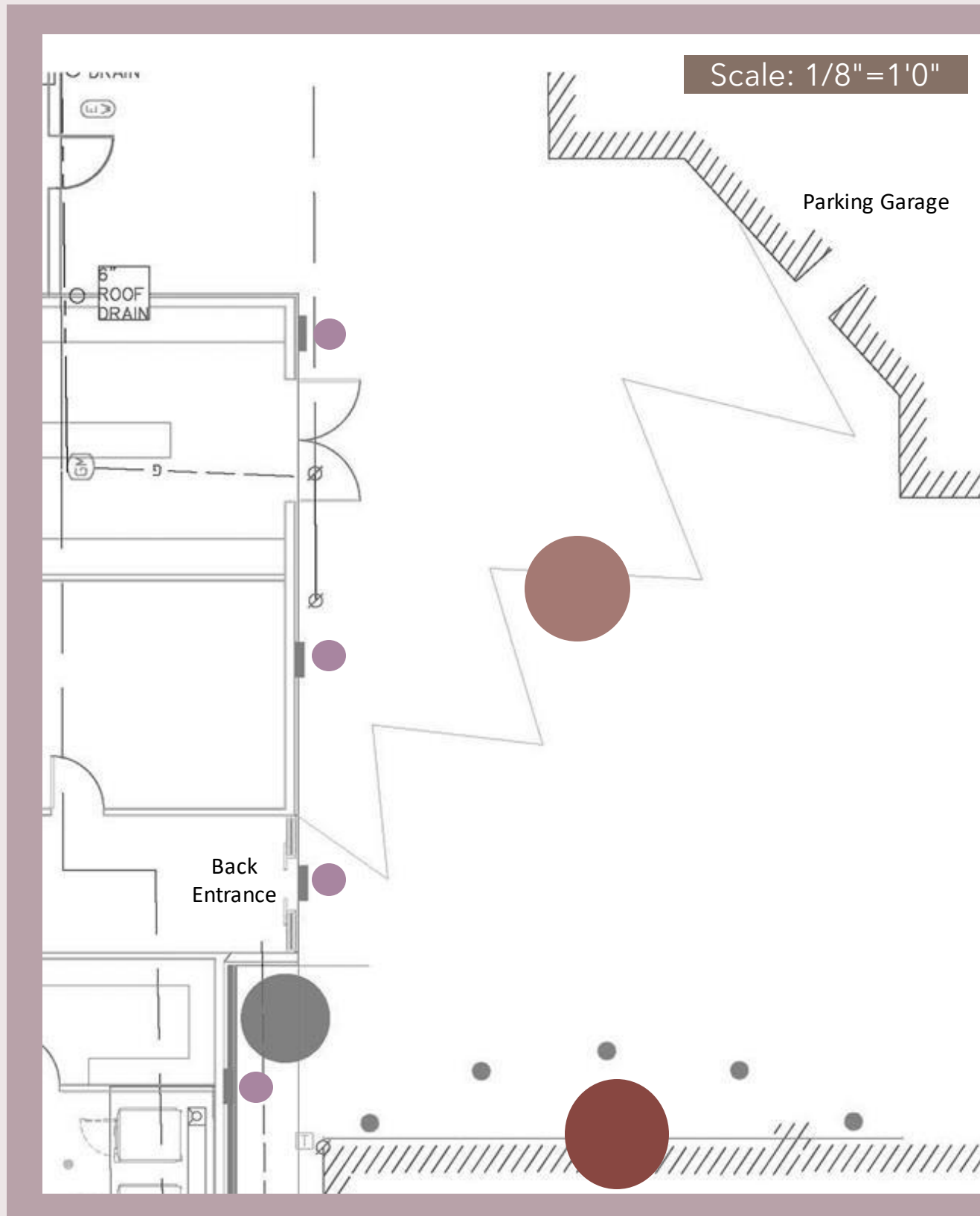


Outdoor Walls



Outdoor Flooring

REFLECTED CEILING PLAN



Light Fixtures



BUILDING SECTIONS



RENDERED PERSPECTIVES



RENDERED PERSPECTIVES



RENDERED PERSPECTIVES



SPECIFICATIONS

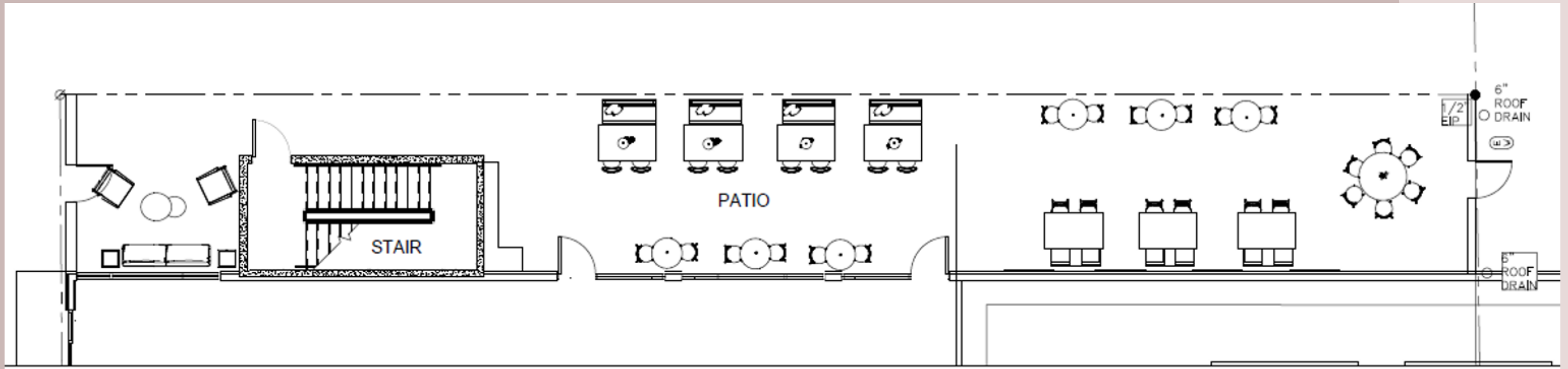
Image	Description	Quantity	Price	Total
	Glass & Aluminum Canopy	1	\$16,120	\$16,120
	Jonathan Bowling Sculpture	1	\$0	\$0

Budget	\$7,920
Total	\$16,120
Discounted Total (50%)	\$8,060

SIDE PATIO

PAIGE CARRICK

FINAL FUNRITURE PLAN



Scale: 1/8"=1'-0"

FINAL FURNITURE & FINISHES

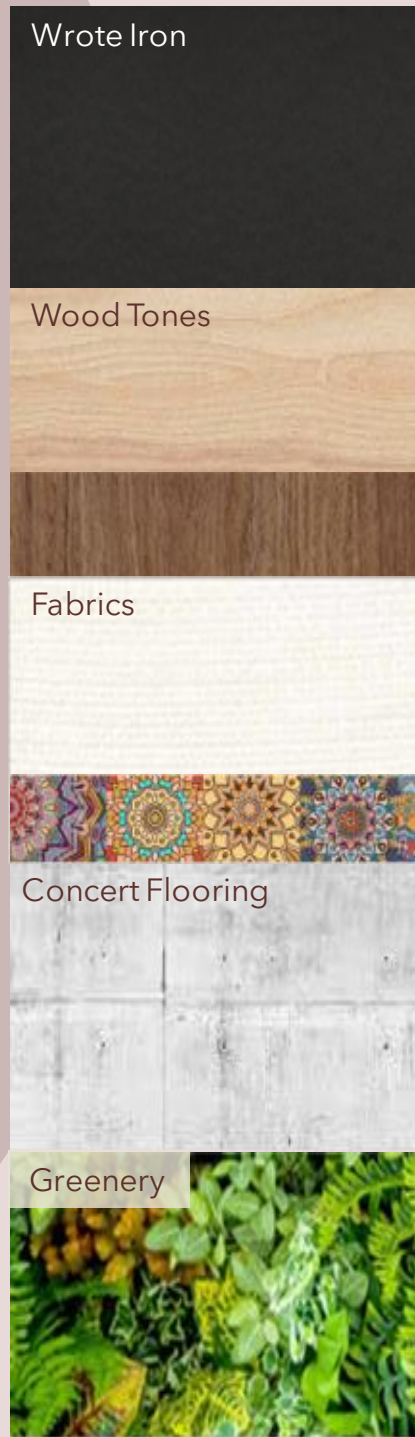
Setting



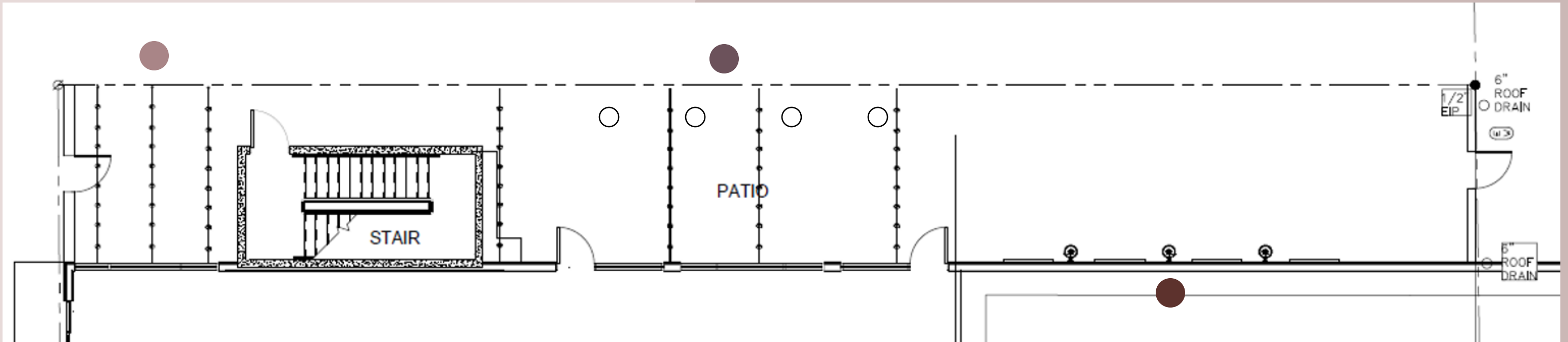
Tables



Finishes



REFLECTED CEILING PLAN

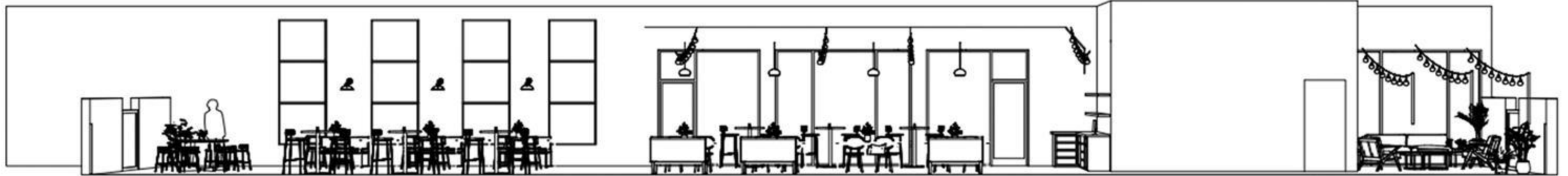
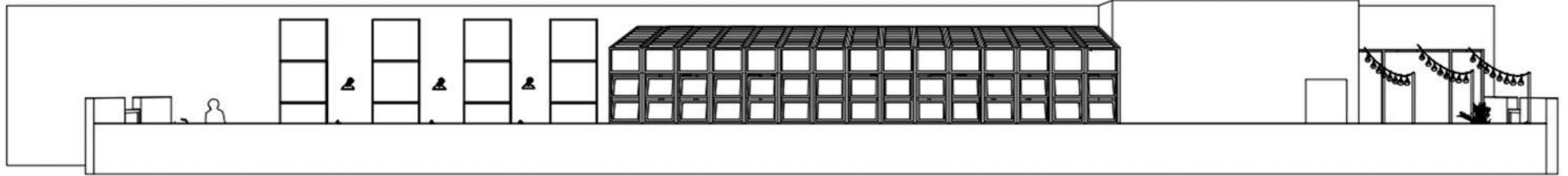


Scale: 1/8"=1'-0"

Light Fixtures



BUILDING SECTIONS



Scale: 1/8"=1'-0"

RENDERED PERSPECTIVES



RENDERED PERSPECTIVES



RENDERED PERSPECTIVES



SPECIFICATIONS

Image	Description	Quantity	Price	Total
	Dining #1	8	375	3000
	Dining #2	5	675	3375
	Dining #3	6	520	3120
	Bar Stool	12	530	6360
	Bench	3	475	1425
	Chair	2	999	1998
	Sofa	1	1099	1099
	Booth	4	309	1236

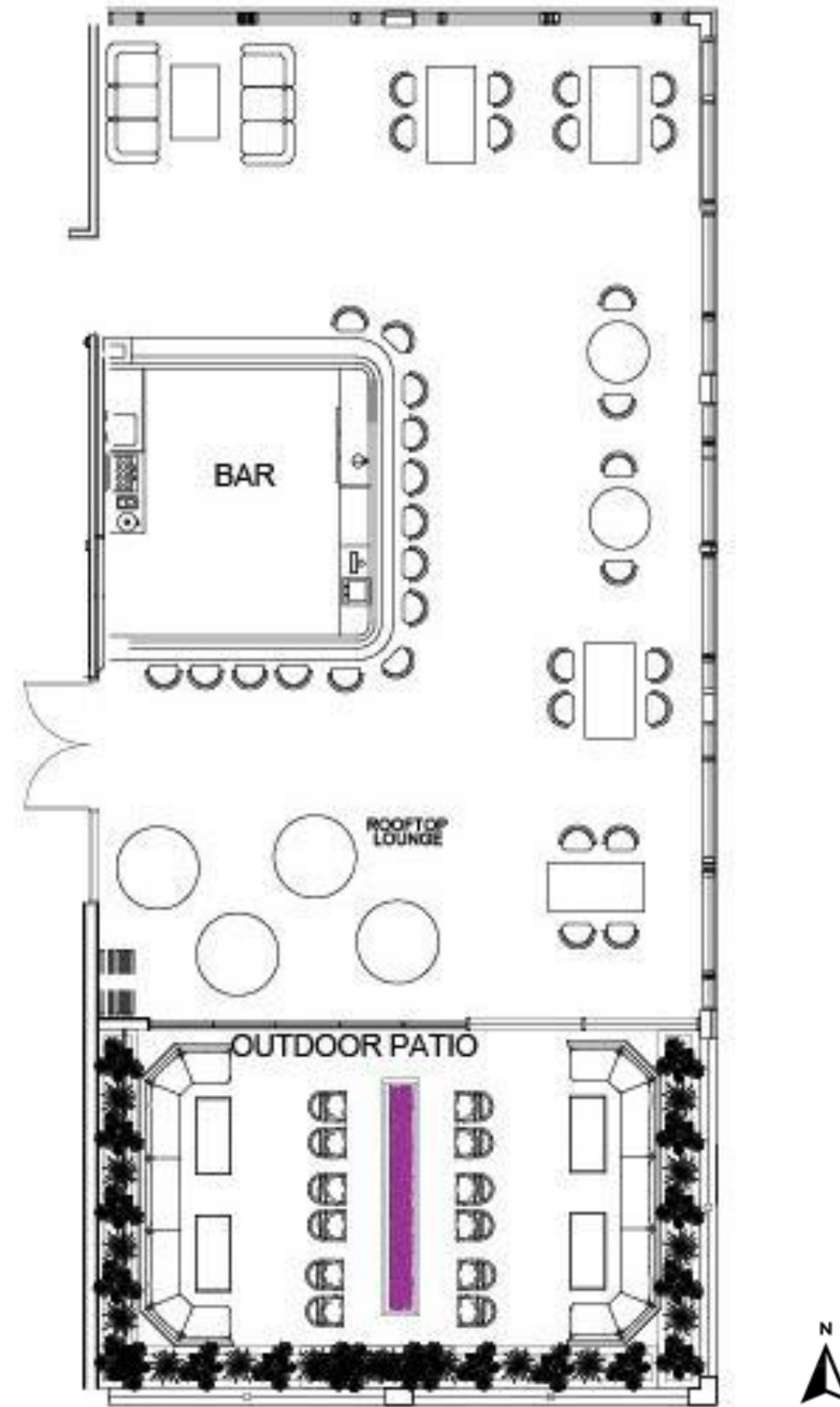
Image	Description	Quantity	Price	Total
	Square Table	7	1459	10213
	Round Table	1	1400	1400
	Bar Table	6	850	5100
	Side Table	2	319	638
	Coffee Table	1	389	389

Projected Budget - \$26,656
 Sales Total - 39,353
 Discounted Total (50%) - 19,677

ROOFTOP BAR

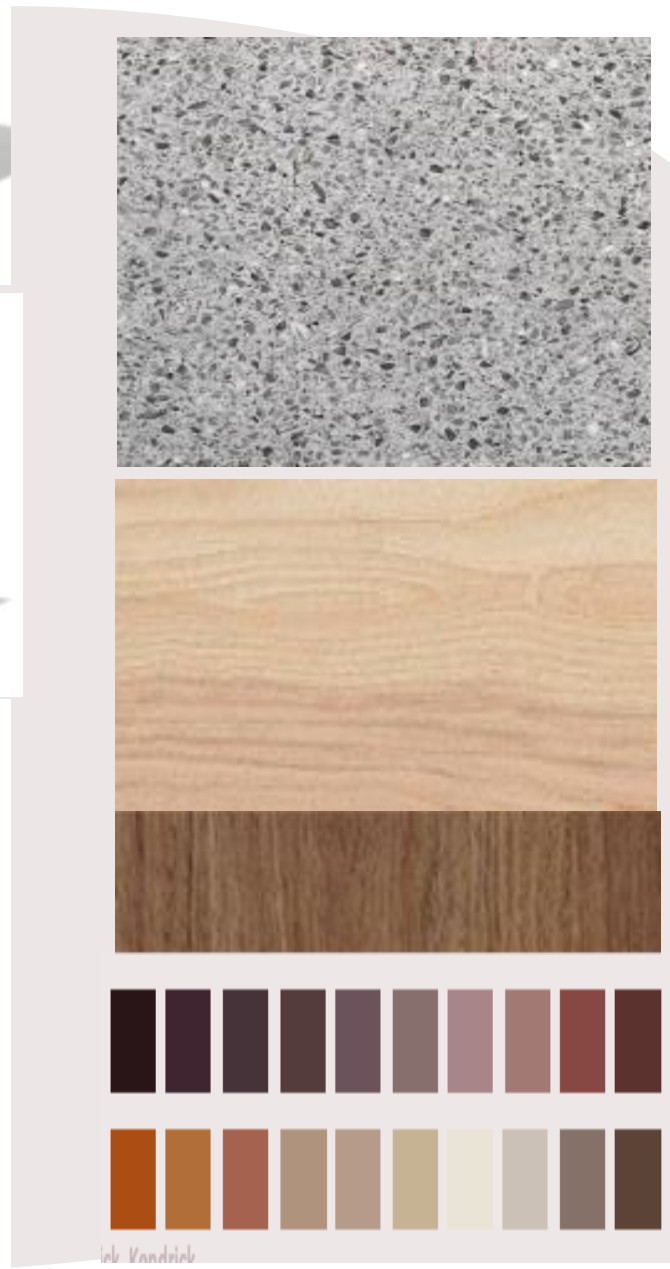
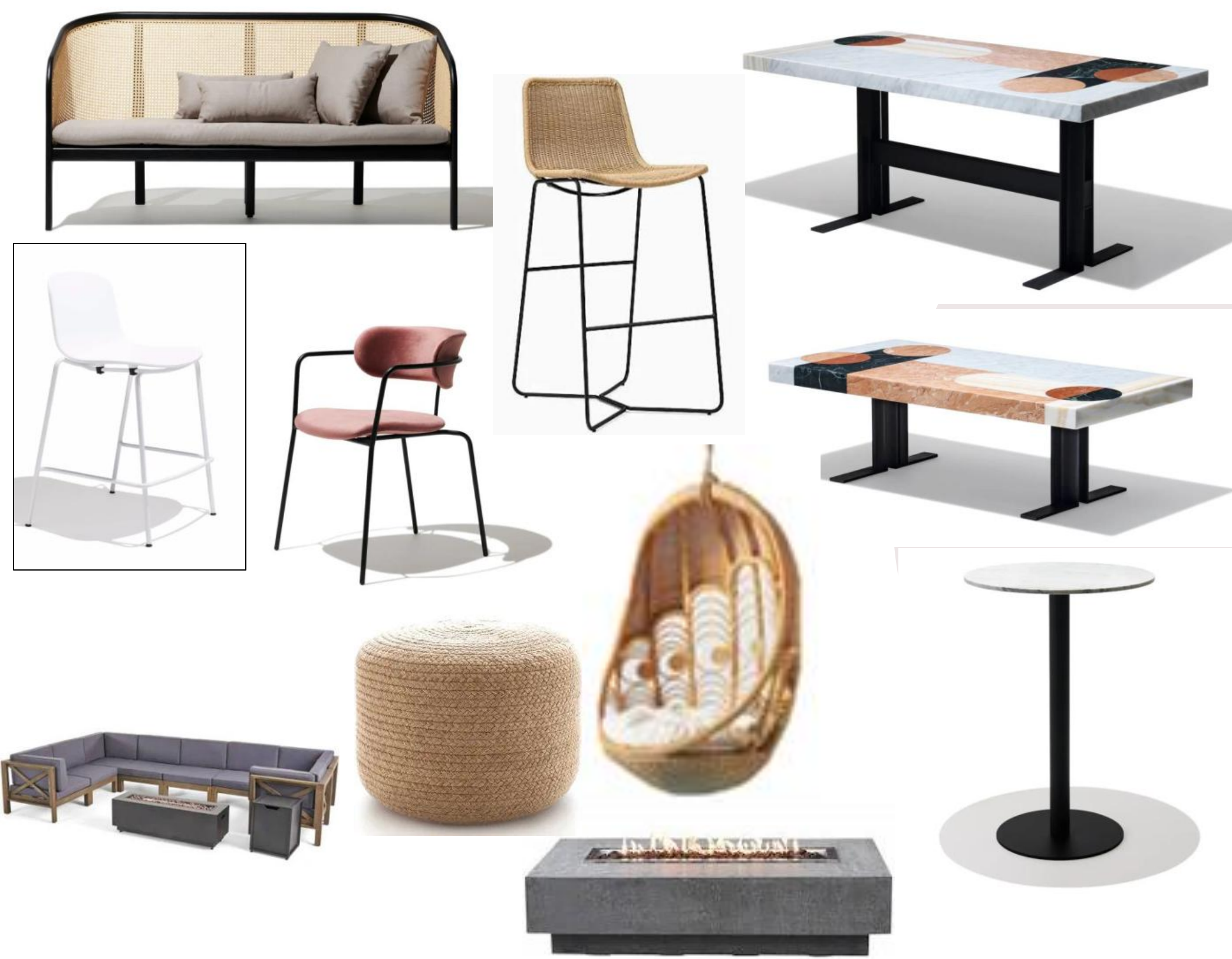
REBEKAH FRY

FURNITURE PLAN



Scale: 1/8"=1'-0"

FURNITURE, FINISHES, & WINDOW TREATMENTS



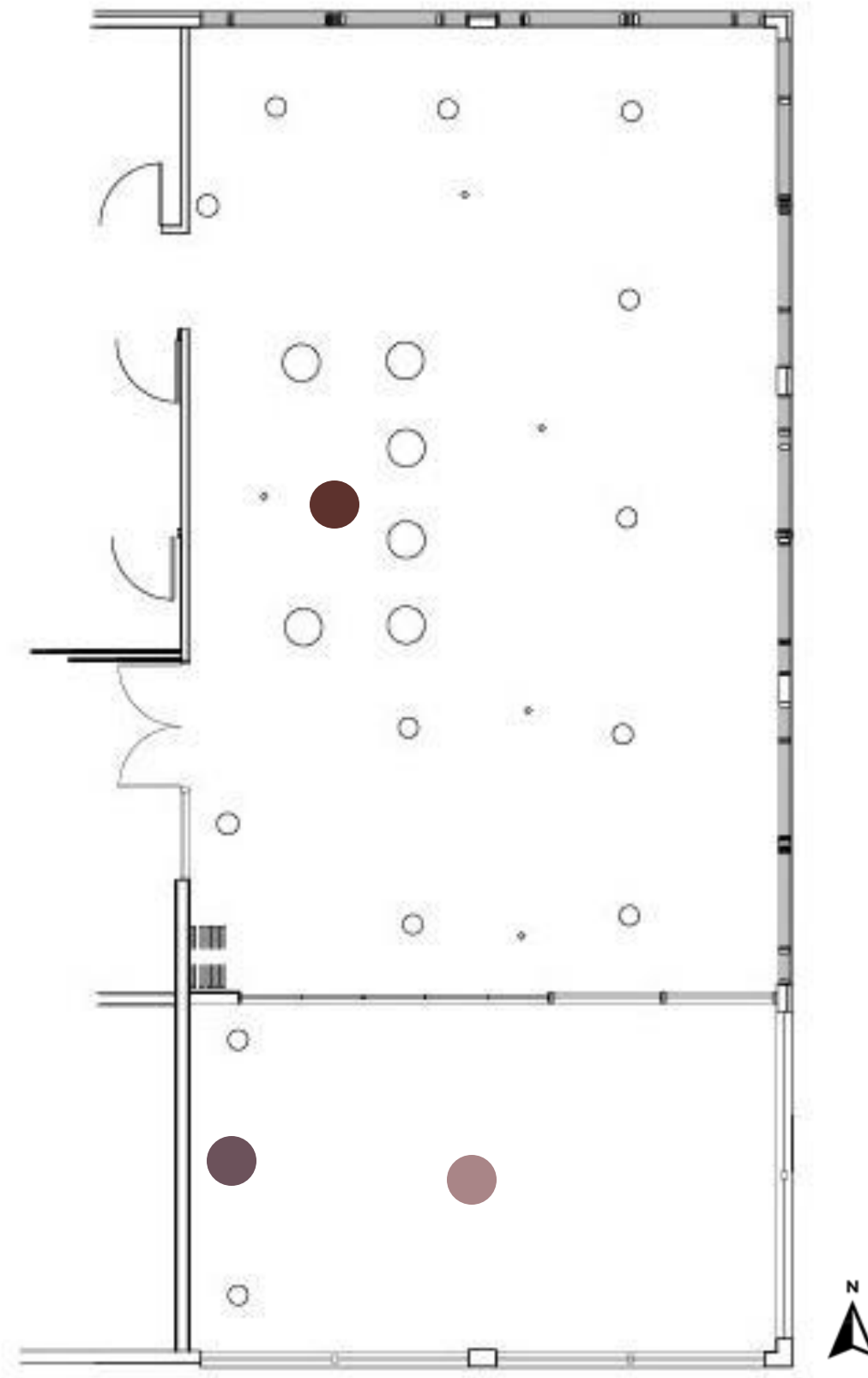
Flooring

Wood Tones

Color Palette

REFLECTED CEILING PLAN

Light Fixtures



Scale: 1/8"=1'-0"



BUILDING SECTIONS



NTS



NTS

RENDERED PERSPECTIVES



RENDERED PERSPECTIVES



SPECIFICATIONS











Image	Description	Quantity	Price	Total
	Coffee Table	1	\$1,995.00	\$1,995.00
	Sofa	2	\$3,500.00	\$7,000.00
	Dining Table	4	\$3,695.00	\$14,780.00
	Dining Chair	16	\$200.00	\$3,200.00
	Table Barstool	6	\$175.00	\$1,050.00
	Bar Table	3	\$850.00	\$2,550.00
	Hanging Chair	4	\$3,400.00	\$13,600.00

Image	Description	Quantity	Price	Total
	Barstool	12	\$398.00	\$4,776.00
	Outdoor Fire Feature	3	\$1,529.00	\$4,587.00
	Outdoor Sofa	2	\$1,492.00	\$2,984.00
	Outdoor Pouf Seating	12	\$260.00	\$3,120.00

Projected Budget - \$82,485.00
 Sales Total - \$59,642.00
 Discounted Total (50%) - \$29,821.00

FINAL FURNITURE BUDGET

Space	Projected Budget	Sales Total	Discounted Price (50%)
Lobby	\$174,420	\$99,710	\$49,855
Lounge	\$36,420	\$26,625	\$13,312.50
Back Patio	\$7,920	\$16,120	\$8,060
Side Patio	\$26,656	\$39,353	\$19,677
Rooftop Bar	\$82,485	\$59,642	\$29,821
Project Total	\$327,910	\$241,450	\$120,725.50

Hilton Garden Inn

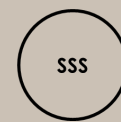
Greenville, NC

Thank You

Carrick, Fry, Joyner, and Kendrick



CLARENDON
PROPERTIES



6th Street Studio
Interior Designs

